



SymVPN 1.00



User Guide

Symbian and the 'for Symbian OS' logo are trademarks or registered trademarks of Symbian Software Ltd

TABLE OF CONTENTS

1	DOCUMENT INFORMATION	3
1.1	TERMINOLOGY	3
1.2	REVISION HISTORY	3
2	INTRODUCTION	4
2.1	SUPPORTED PLATFORMS & DEVICES	4
2.2	POSSIBLE CHARGES	4
3	INSTALLATION AND PREPARATION.....	5
3.1	PRE-REQUISITES	5
3.2	TRIAL AND REGISTRATION	5
4	USING THE TOOL	6
4.1	HOW TO LAUNCH.....	6
4.1.1	First launch of Trial version	6
4.1.2	Regular appearance.....	7
4.2	HOW TO MAINTAIN THE VPN ACCESS POINTS.....	8
4.2.1	Application's main screen	8
4.2.2	Access Point creation	9
4.2.3	Verification of the newly-created Access Point.....	9
4.2.4	Access point editing.....	10
4.2.5	SymVPN application usage conclusion	11
5	HOW TO USE SYMPVN-CREATED ACCESS POINTS.....	11
5.1	EXAMPLE USAGE WITH SYMSMB.....	11
5.2	EXAMPLE USAGE WITH OPERA WEB-BROWSER	12
5.3	EXAMPLE USAGE WITH MAIL-FOR-EXCHANGE	13
6	LICENSING AND REGISTRATION	14
6.1	TRIAL LICENSE.....	14
6.2	HOW TO REGISTER.....	15
6.3	FINALIZING REGISTRATION.....	15
6.4	REGISTERED STATUS RESTORATION	16
6.5	LEGAL LICENSE	16
7	CONCLUSION.....	17

1 DOCUMENT INFORMATION

This document is the user guide for the **SymVPN 1.00** (S60 3rd edition) application.

1.1 TERMINOLOGY

Abbreviation	Definition
AP	Access Point
SIS	Symbian OS Installation System
S60	Symbian OS Series 60 platform (3rd edition)
SymSMB	SMB client for S60 3 rd edition from Telexy Networks Inc. (www.telexy.com)
SymVPN	PPTP VPN client for S60 3 rd edition from Telexy Networks Inc. (www.telexy.com)

1.2 REVISION HISTORY

Date	Version	Description
10-Nov-08	0.01	First draft
12-Nov-08	0.02	Beta version
22-Nov-08	0.90	RC1
25-Nov-08	1.00	Release 1.00

2 INTRODUCTION

SymVPN 1.00 is a S60 (3rd edition) VPN client application that:

- provides individual users with secure access to their organization or home network;
- targeted for use with VPN Servers that support PPTP protocol (for instance: Windows 2003 Server, Windows XP, Windows Vista);
- secures basic VPN client functionality (user authentication, channel data encryption, session with VPN Server management) based on PPTP tunnelling protocol.

SymVPN 1.00 allows you to create a regular Access Point (from the Symbian OS point of view) that can be used in an ordinary manner by any appropriate application that requires an Internet connection.

For example, SymVPN-created Access Point, combined with SymSMB, will secure your access to the home file server over the Internet. Or you can use it with a Web-browser (Opera-browser works fine for this purpose) to get in your organization's Intranet. Or you can use it with MailForExchange to enjoy a secure channel with your corporative Exchange server. And so on.

2.1 SUPPORTED PLATFORMS & DEVICES

The application is compatible with the following S60 3.0/3.1 edition devices:

- Nokia E-Series:
 - E51, E60, E61, E61i, E63, E65, E66, E70, E71, E90;
- Nokia N-Series:
 - N80, N80 Internet Edition, N81, N81 8GB, N82, N91, N91 8GB, N92, N93, N93i, N95, N95 8GB

It is expected that **SymVPN 1.00** will work normally with upcoming:

- Samsung G810;

and, in general, with any S60 3.0/3.1 edition devices with WLAN, 3G or WiMAX support.

Full support for S60 FP3 devices will be added in next releases.

2.2 POSSIBLE CHARGES

Connection to and use of the Internet from your cell phone is typically not free. Whether or not you will be charged for using **SymVPN 1.00** (namely, for use of Internet via a Data bearer) can be determined from your local service provider.

3 INSTALLATION AND PREPARATION

The **SymVPN 1.00** is supplied as a single Symbian OS Installation System (SIS) file. It must be transferred to the phone via any version of SymSMB or through USB cable, memory card, Bluetooth or downloaded from **telexy.com** website directly to you phone. Once transferred, the standard installation process can be applied.

3.1 PRE-REQUISITES

Before installing, ensure that the phone supports any Data bearer (WLAN or 3G is most recommended). Make sure that you are in the range of a bearer through which you are going to connect to Internet (for example WLAN router).

Make sure that you possess at least one access account to the existing VPN. It is always a good practice to verify your VPN login parameters using some computer before trying to do it using a phone.

If you need an admission to your organization's VPN – ask your network administrator for a proper login name and password. If you are going to access your home network – make sure that your home VPN is properly configured. The following links detail the steps necessary to create you home VPN Server for (or you can google it with discretion):

- [Windows 2003 Server](#);
- [Linux](#);
- [Windows XP](#);
- [Mac OS X Server](#);
- [Windows Vista](#);

If the VPN server is behind a router, Port Forwarding will need to be done on the router. Standard port usage for **PPTP** is **TCP port 1723**. This port will have to be forwarded to the VPN server's IP. Also please ensure your Firewall doesn't block them.

3.2 TRIAL AND REGISTRATION

Telexy Networks offers its products through the following practice. Every product can be used in two stages:

- **Trial version is free to download and use.** This version is fully functional; however it works only for a limited period of time, starting on the date of installation. The tryout period is long enough to understand whether this product suits your needs or not. Thus, by the expiration date you can decide if you are ready to purchase the product.

- **Final version of a product is fully functional and time-unlimited.** First - a personalized license needs to be purchased on the [Telexy website](#). Then it should be registered on your phone (see [section 6.2](#)). These actions legitimize the final version of the product on your device. There is no need to download anything else. Once the license is provided, the trial version becomes fully operational.

Thus, after the first installation the application always finds itself in the trial version state.

4 USING THE TOOL

The basic usage of the system is described in this chapter with corresponding screenshots.

4.1 HOW TO LAUNCH

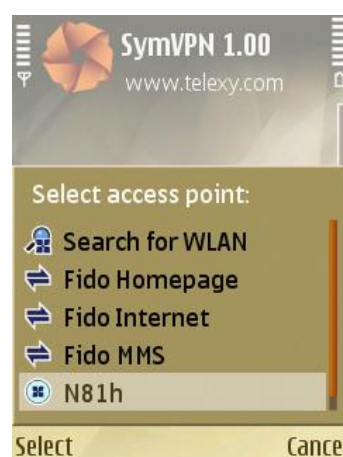
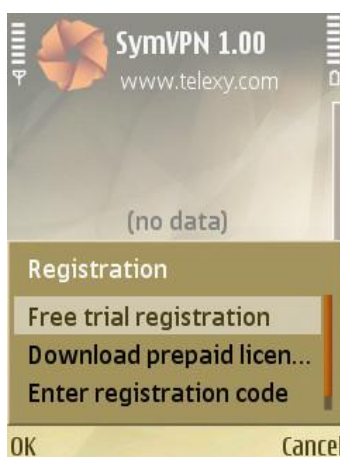


The tool is launched from the phone's application list by selecting "SymVPN 1.00" icon.

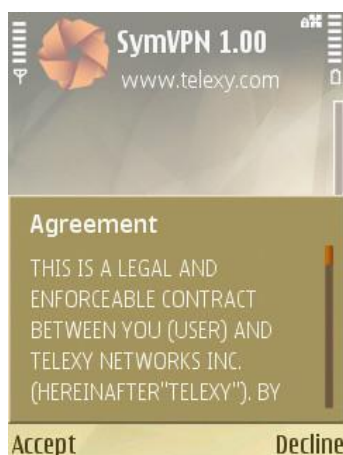
SymVPN 1.00 icon can be placed in different application folders on different devices. Usually, it could be "Applications", "Installed" or "My Own" folder. Please, refer to your phone's manual for more details.

4.1.1 First launch of Trial version

First launch of trial version of the application always causes the "Product registration required!" dialog to appear – in order to use the application in free trial mode you have to go through a simple registration procedure. During this procedure SymVPN 1.00 will connect to www.telexy.com and download a trial license for your phone. Thus, select "Register" > "Free trial registration" > <Appropriate access point> in sequence.

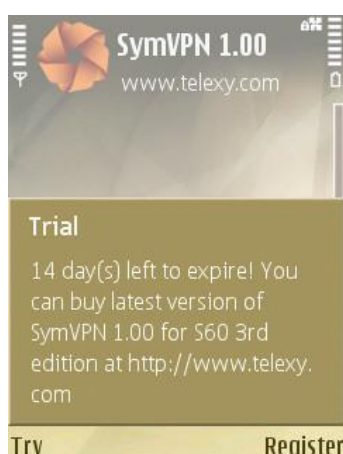


When the license is downloaded, select the "Register" option and complete the registration process by pressing "Ok" soft-key.



Right after the trial registration the "End User License Agreement" dialog will appear. Please, read it carefully and indicate your decision by pressing "Accept" or "Decline" button. "Decline" leads to the application closure. "Accept" means that you agree with EULA and therefore can use the application.

4.1.2 Regular appearance



Next application's screen is just a reminder that the current version is a try-out; therefore it will appear on every launch (with number of days decreasing) until trial license expiration or legal registration. Use the "Try" button to enter the application's main page.

4.2 HOW TO MAINTAIN THE VPN ACCESS POINTS

SymVPN 1.00 allows you to create a special Access Points that:

- 1) provide VPN functionality;
- 2) look just like a regular AP from the Symbian OS point of view.

This ability allows the SymVPN-created AP to be used in an ordinary manner by any appropriate application that requires an Internet connection.

New AP must be created if:

- 1) If you need to connect to a new VPN. You have to know the address of the new VPN server, login name and account to access it;
- 2) If you want to copy an existing SymVPN AP, but specify a different access method – different real AP that is used underneath to create a physical connection. This is useful to select the SymVPN AP with an underlying real AP appropriate for your location.

The list of existing SymVPN AP is displayed in the main application screen.

4.2.1 Application's main screen



The main screen in SymVPN 1.00 provides access to SymVPN access points.

The main operations allowed on SymVPN access points are listed in the "Options" menu:

- "Verify" – tests the current SymVPN access point; the result will be displayed on the screen: in case of success - "Connection Info" form; in case of any error – "Error Info" dialog;
- "Edit" – opens a dialog to view or edit the current Access Point;
- "Insert" – opens a dialog to create new Access Point;
- "Delete" – deletes the current Access Point;
- "License" – group of license-related operations:
 - "Properties" – displays the contents of the Beta license.
 - "Register" – downloads the purchased license to phone and registers it or receives a license via "Registration Code" (not available once the phone is registered);
 - "Buy" – redirects to the developer site where the license can be purchased (not available once the phone is registered);
- "About" – standard "About" information;
- "Help" – provides help description for a current context;



4.2.2 Access Point creation

“Insert” command from the application menu is used to create a VPN access point.

A SymVPN Access Point is described using the following 5 fields:

- “Name” - this is the name under which the SymVPN Access Point will be seen in the phone’s list of available access points;
- “Access point” – real access point that will be used for establishing a physical connection (usually – GPRS, 3G or WLAN access point);
- “Host” – address of the VPN server that you would like to connect to (for example: “telexy.com” or “72.68.124.206”);
- “User” – your login name on the “Host”;
- “Password” – your login password on the “Host”;

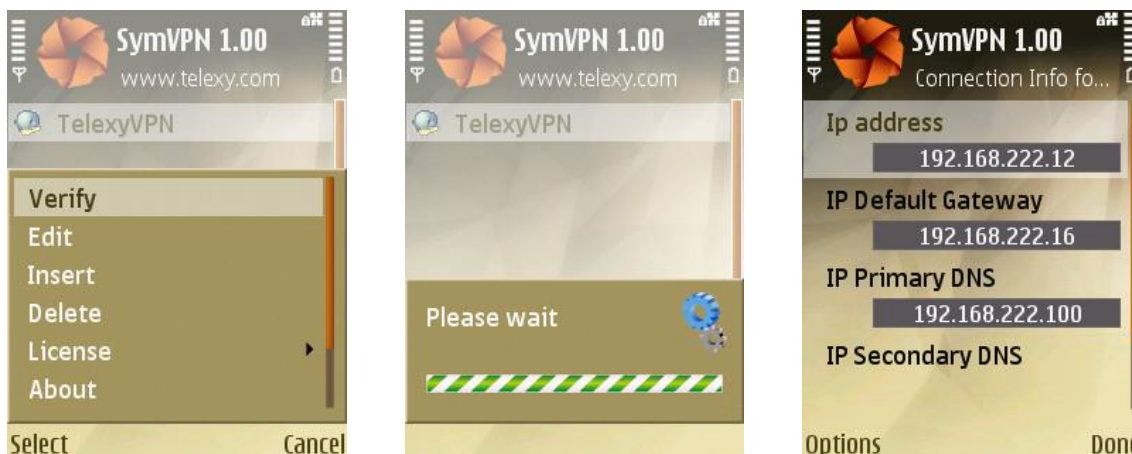


4.2.3 Verification of the newly-created Access Point

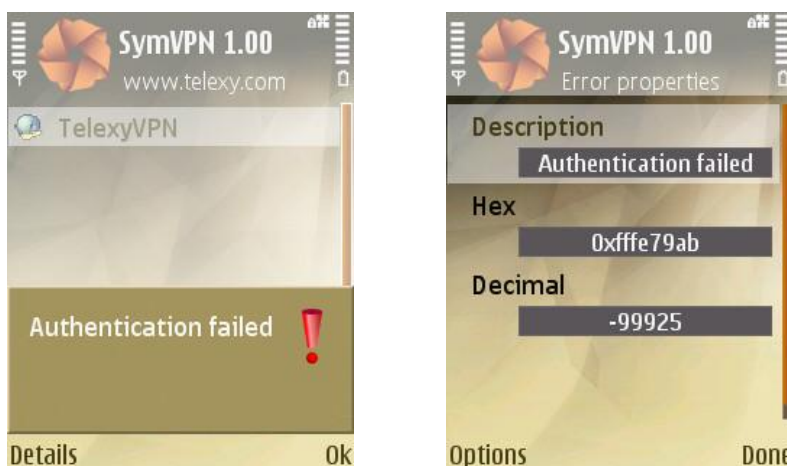
Newly created Access Point must be verified before first use. This is the purpose of the “Verify” menu command.

The result of the “Verify” operation (if succeeded) is represented by the set of the following fields:

- “IP address” – IP address assigned to your phone in the VPN;
- “IP Default Gateway” – IP address of a Default Gateway in the VPN;
- “IP Primary DNS” – IP address of a Primary DNS in the VPN;
- “IP Secondary DNS” – IP address of a Secondary DNS in the VPN;
- “IP WINS” – IP address of a WINS server in the VPN;



If an error occurred while create an Access Point, the verification procedure will present an error message:



In this case, if the error is due to faulty set-up of an Access Point, edit its configuration.

4.2.4 Access point editing

To edit an Access Point, use the "Edit" menu command:



4.2.5 SymVPN application usage conclusion

You may exit SymVPN application after creating and verifying all required VPN Access Points. Now the created Access Points are in the system and can be used by any appropriate application that requires an Internet connection.



5 HOW TO USE SYMPVN-CREATED ACCESS POINTS

SymVPN 1.00 allows you to create a regular Access Point (from the Symbian OS point of view) that can be used in an ordinary manner by any appropriate application that requires an Internet connection. We are showing a couple examples how to use the SymVPN-created AP with some application, however, we are sure that you will find your own way to use it.

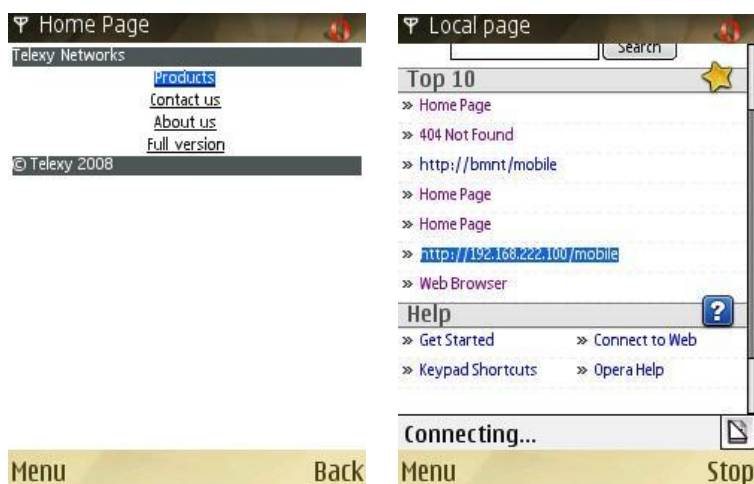
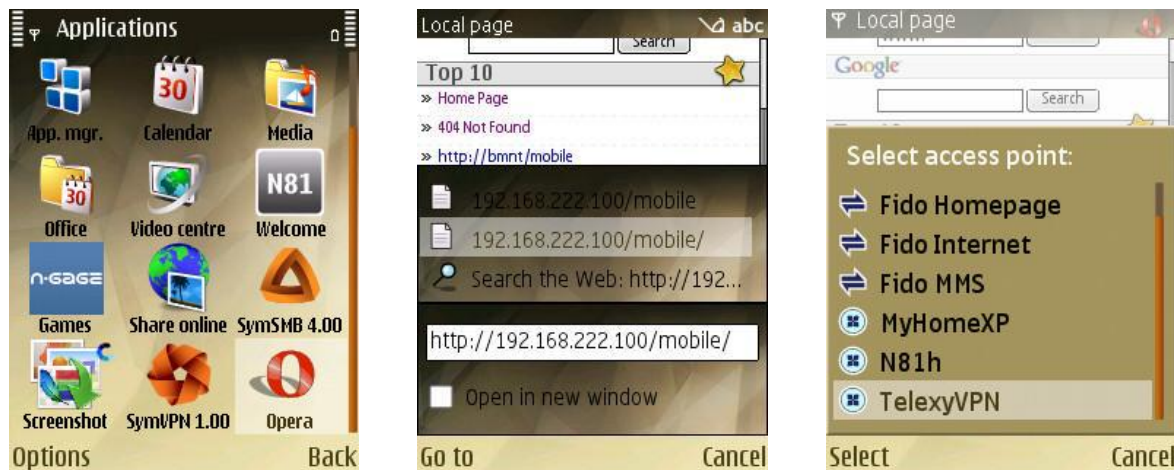
5.1 EXAMPLE USAGE WITH SYMSMB

SymVPN-created Access Point, combined with SymSMB, will secure your access to the home file server over the Internet. You can use it directly in the "Network Drive" configuration as well as in the "Network Neighbourhood" browsing. More details about this topic can be found [here](#).



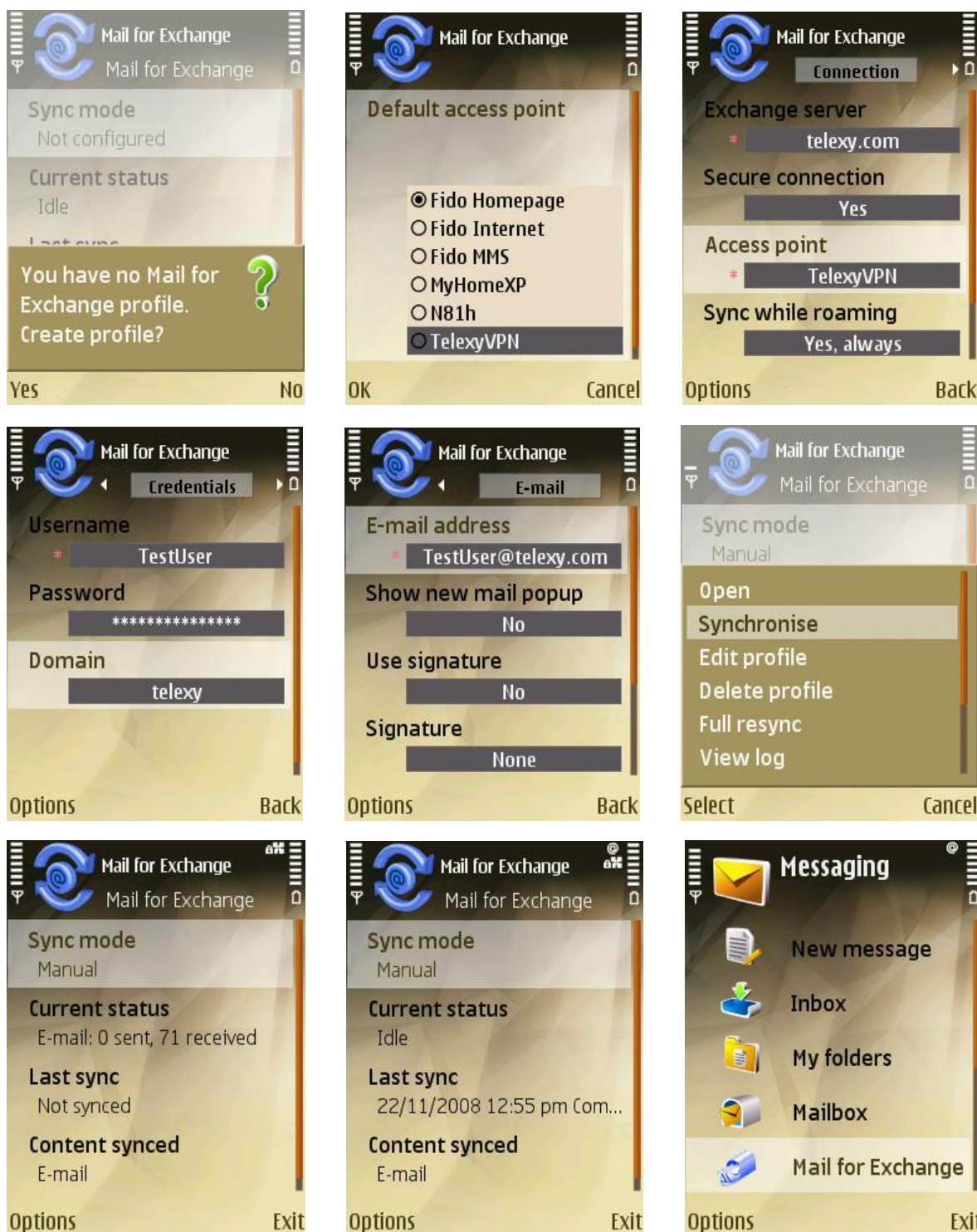
5.2 EXAMPLE USAGE WITH OPERA WEB-BROWSER

Or you can use it with Opera-browser (it looks like "Service" browser cannot operate with URL that is not started with "www") to get in your organization's Intranet.



5.3 EXAMPLE USAGE WITH MAIL-FOR-EXCHANGE

Another usage example - use it with Mail-For-Exchange application to enjoy a secure channel with your corporate Exchange server.



6 LICENSING AND REGISTRATION

As you might remember from the [section 3.2](#) SymVPN 1.00 can be either in "TRIAL" or in "Registered" state.

6.1 TRIAL LICENSE

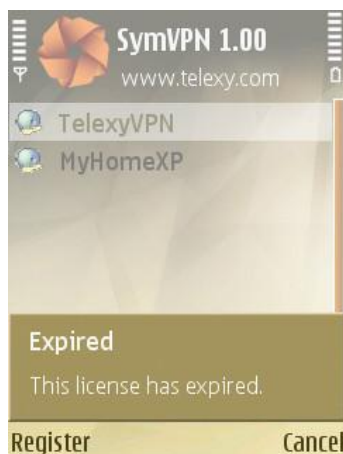


While the application is in "Trial" state, every launch would cause "TRIAL" warning (see [section 4.1.2](#)).

At any moment you can check the application license from the root application page via "Menu\Licence\Property". You can find that the type of the licence is "Trial", it is issued to your phone (check the SN), what are the activation and expiration dates. At any moment you can check the EULA.

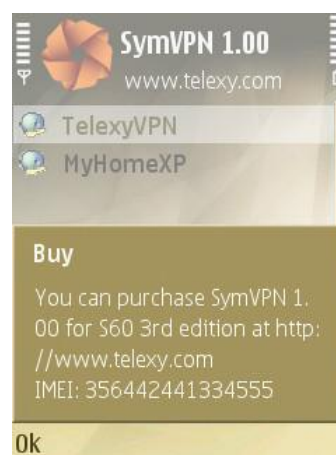
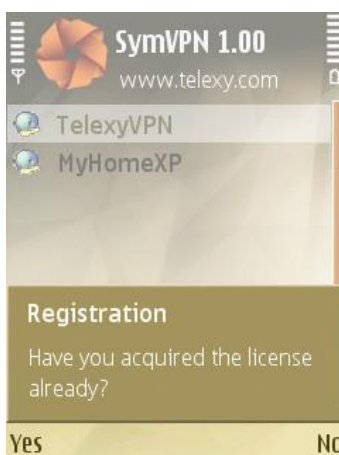
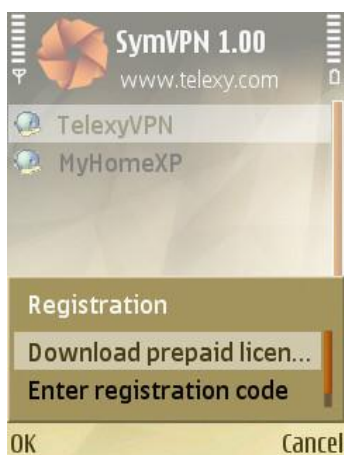


6.2 HOW TO REGISTER



Sooner or later you will face a point when you have to decide whether this application is worth buying. If it is, you have to legalize it on your phone. Of course, you can wait to the uttermost – trial licence expiration but in this situation the only option that remains will be "Register".

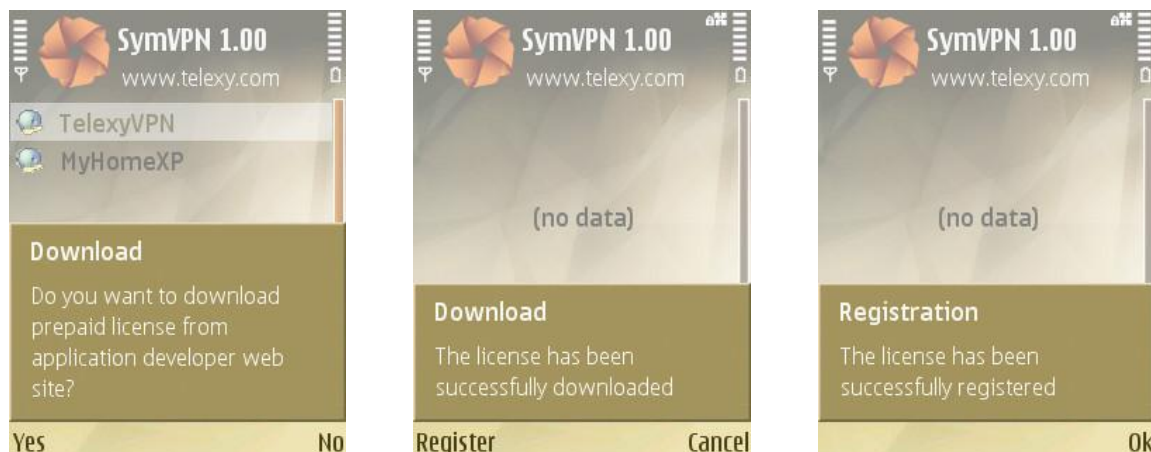
Thus, how to register our product? Select "Register" option and then choose "Download prepaid license" command. You will be asked about a licence acquisition first. If you haven't bought a licence yet ("No"), the application instructs you what to do in order to register.



So, you have to go to our web-site www.telexy.com and [buy a full licence](#).

6.3 FINALIZING REGISTRATION

When a licence has been bought, you can finalize the registration process on your phone. Select "Register" and "Download prepaid license" options again and agree to "download" and "register" the license in the following two dialogs.



Successful registration will be indicated. Press "Ok" to finish.

6.4 REGISTERED STATUS RESTORATION

It is worthy to note that if a license has once been bought, it is always available for re-registration. Let's say, if for some reason SymVPN was re-installed then it will appear in the Trial state. However, it is enough to repeat the registration procedure from section 6.3 to restore the registered status.

6.5 LEGAL LICENSE

You can view the downloaded licence, selecting the "Menu\Licence\Property". New licence is personalized. It also has "Production" type, a proper Serial number and appropriate dates and price fields.



7 CONCLUSION

We are continually trying to improve SymVPN. If you have any suggestions that could make the product better in any way, please address them to our [business department](#) and we will add your comments to our To Do list.

Please share your opinion, remarks, compatibility issues, possible problems, etc. with us on our forum: <http://forum.telexy.com/>. Should you have any problem, please feel free to contact our 24/7/365 [Customer Support Team](#).

We hope that this software is of value to you and that it makes your networking requirements simpler and easier to use.