

Service Repair Documentation

Level 2.5 – SF65



Release	Date	Department	Notes to change
1.0	05.01.2005	COM MD CC GRM T	New document
1.1	27.01.2005	COM MD CC GRM T	IRIS codes reviewed

Introduction

This Service Repair Documentation is intended to carry out repairs on Siemens repair level 2.5. The described failures shall be repaired in Siemens authorized local workshops only.

All repairs have to be carried out in an ESD protected environment and with ESD protected equipment/tools. For all activities the international ESD regulations have to be considered.

Assembling/disassembling has to be done according to the latest SF65 Level 2 repair documentation. It has to be ensured that every repaired mobile Phone is checked according to the latest released General Test Instruction document (both documents are available in the Technical Support section of the C-market).

Check at least weekly C-market for updates and consider all SF65 related Customer Care Information

If you have any questions regarding the repair procedures or technical questions spare not hesitate to contact our technical support team in Kamp-Lintfort, Germany:

Tel.: +49 2842 95 4666
Fax: +49 2842 95 4302
e-mail: st-support@klf.siemens.de

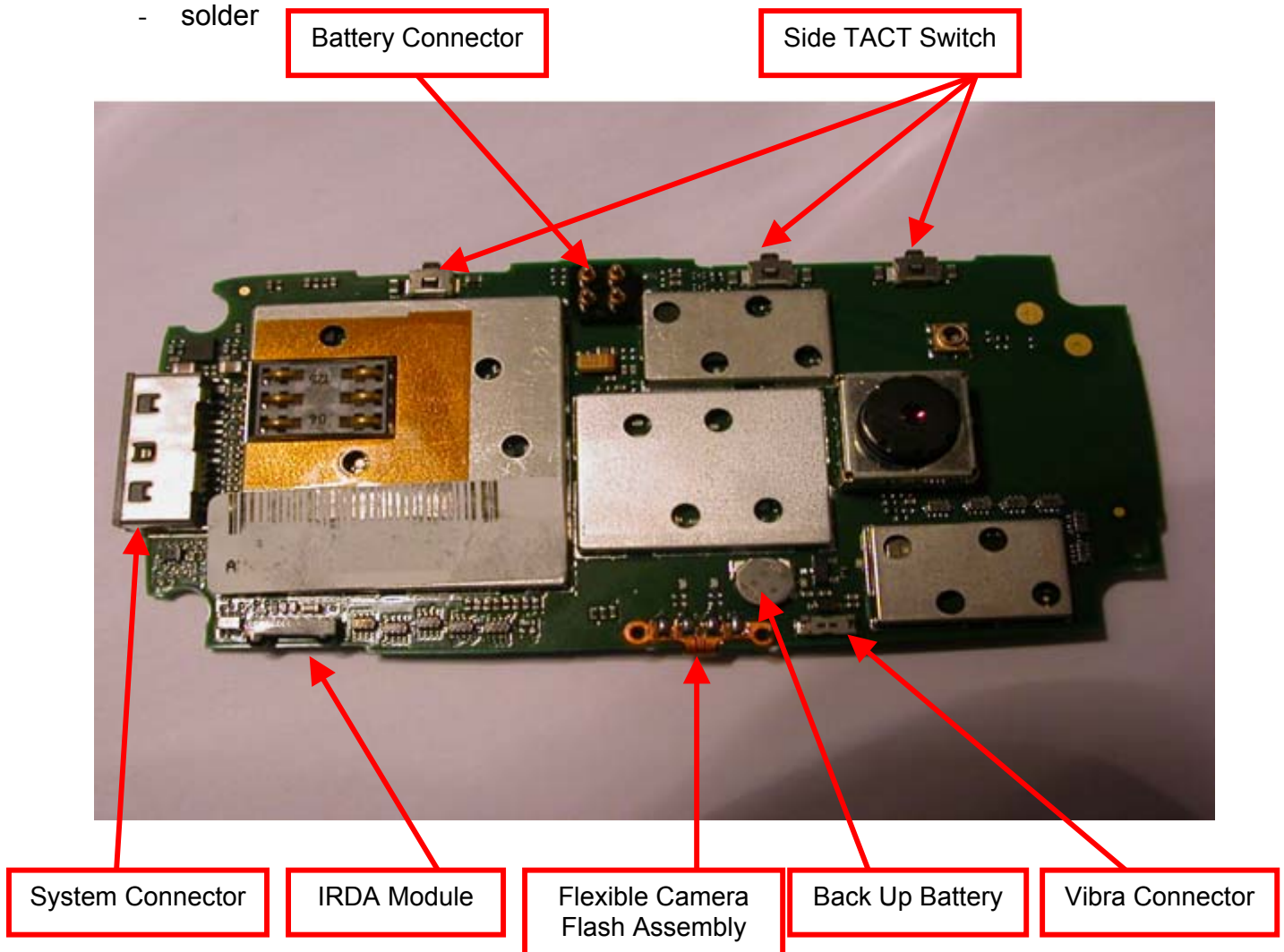
Table Of Content

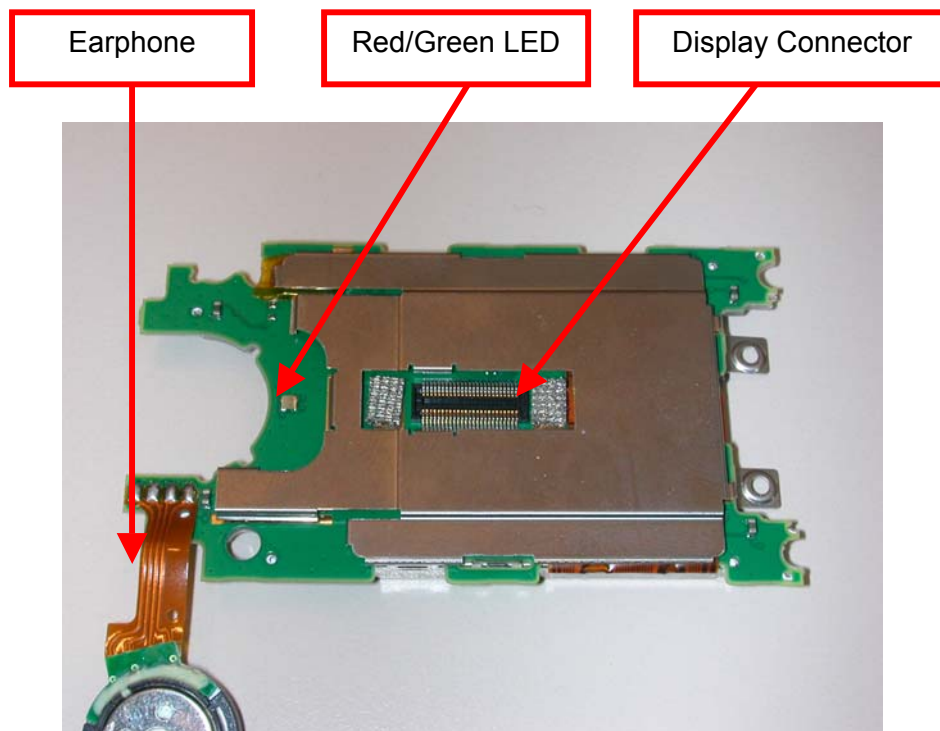
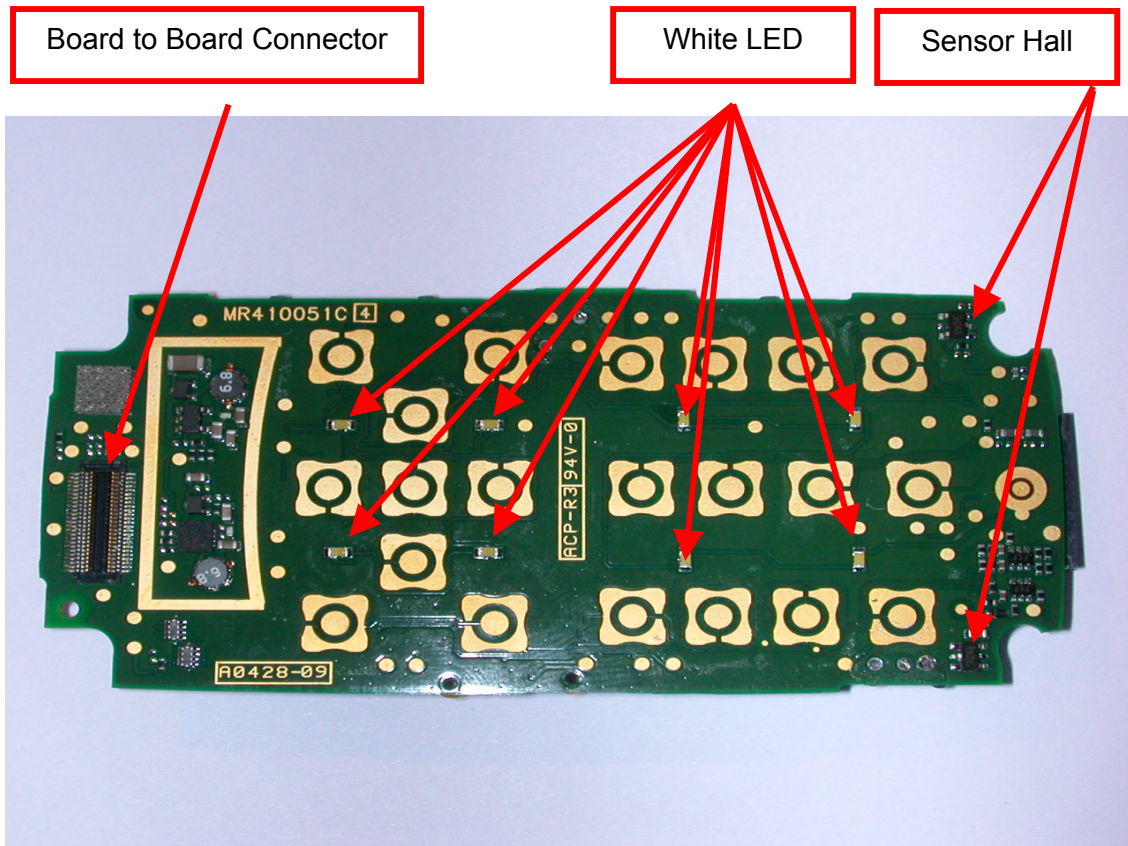
1. SF65 Board Layout	4
2. System Connector	6
3. Display Connector – Board to Board Connector	7
4. Battery Connector	8
5. White & Red/Green LED	9
6. IRDA Communication Module	10
7. Back Up Battery	11
8. Side TACT Switch	12
9. Sensor Hall	13
10. Vibra Connector	14
11. Earphone	15
12. Flexible Camera Flash Assembly	16

1. SF65 Board Layout

Jigs, Tools and Working materials for all described repairs:

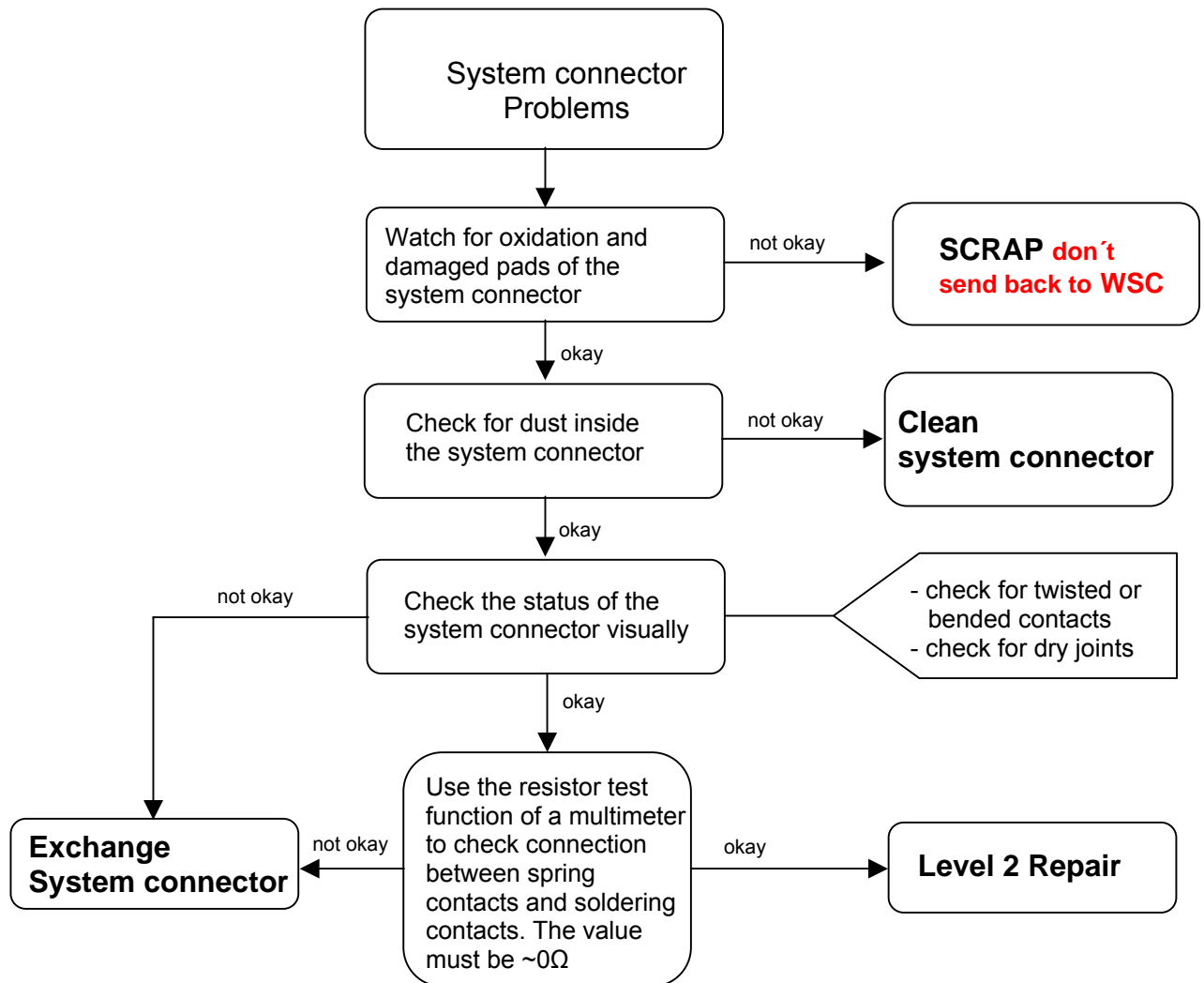
- hot air blower
- soldering gun
- tweezers
- flux
- solder





2. System Connector

Fault Symptoms	
Customer: Charging Problems Problems with external loudspeaker or microphone when using a car kit Problems with accessories connected at the system connector	GRT: No Support



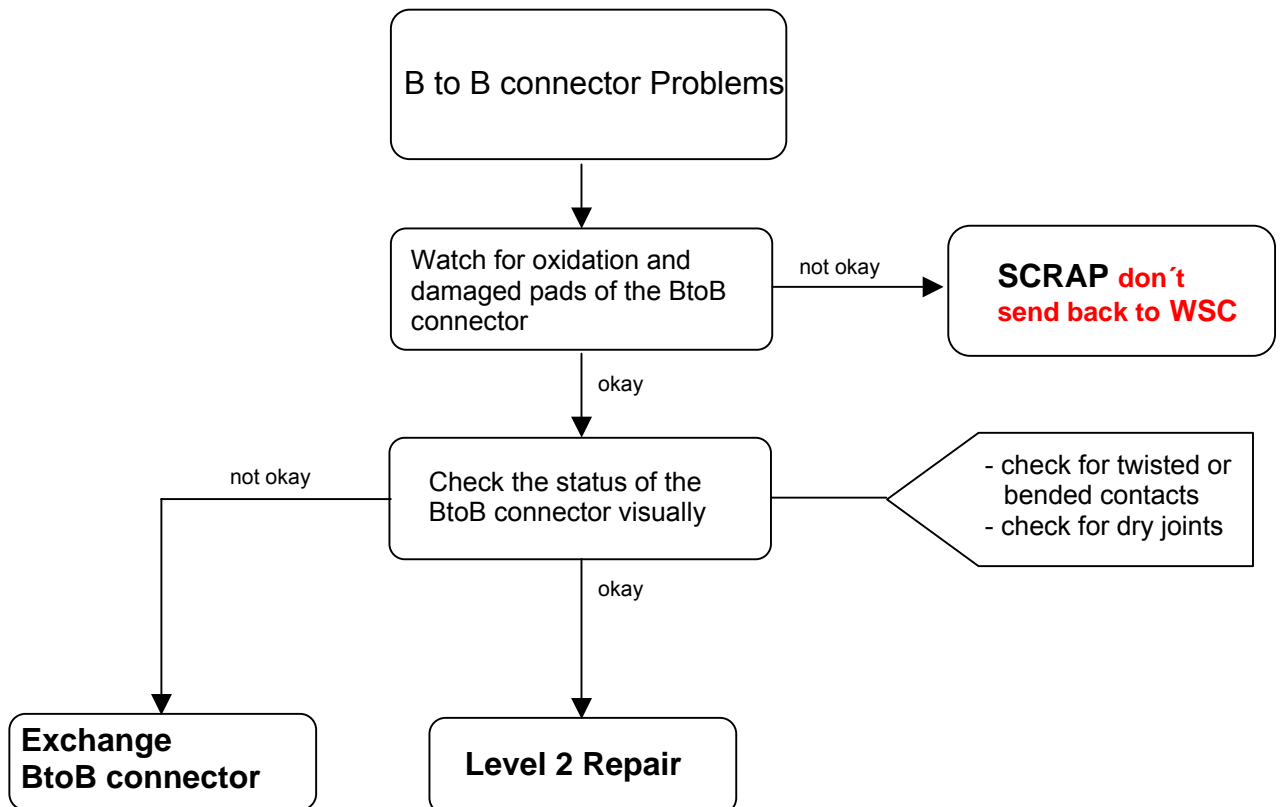
System Connector

Use soldering iron to remove defective component. Avoid excessive heat! Watch surrounding components! Resolder new component afterwards.

E-commerce order number: L50634-Z97-C64
Soldering temperature: 240 - 255°C
IRIS Diagnose Code: 46100 Interface/Charging Connector/Mechanical Damage
47300 Interface/Data Interface/Mechanical Damage
4B100 Interface/Headset Connector/Mechanical Damage

3. Display Connector – Board to Board Connector

Fault Symptoms	
Customer: Display problems, like missing lines or columns on the LCD or display contrast problems or illumination problems	GRT: No Support



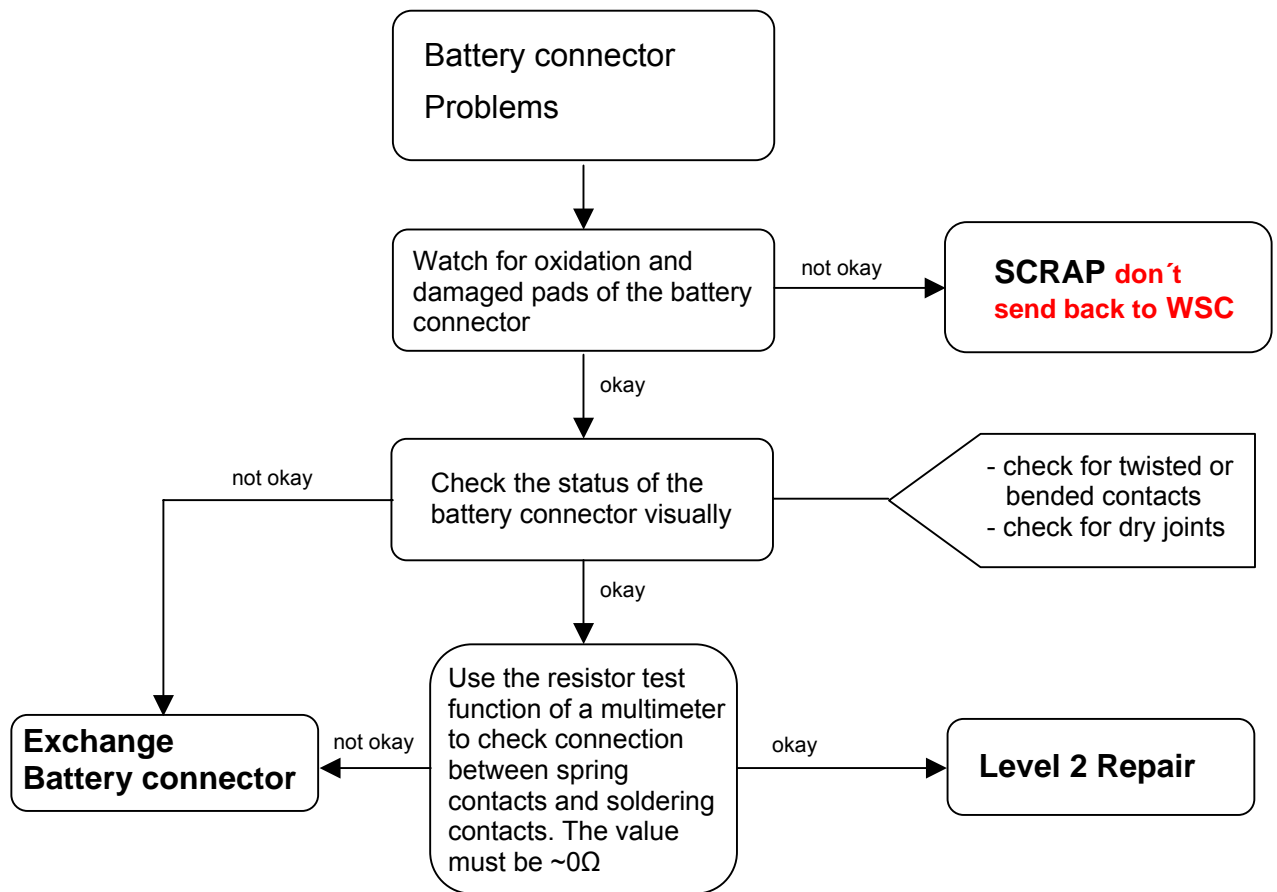
Display Connector - Board to Board Connector

Use soldering iron to remove defective component. Avoid excessive heat! Watch surrounding components! Resolder new component afterwards.

E-commerce order number: L50634-Z97-C58
Soldering temperature: 240 - 255°C
IRIS Diagnose Code: 21000 Display/Performance
22000 Display/Background Illumination
72110 Acoustics/Receiving/Earcap/No Function
72170 Acoustics/Receiving/Earcap/Low Voice Level
75100 Acoustics/Vibra/No Function

4. Battery Connector

Fault Symptoms	
Customer: Mobile does not switch on	GRT: No Support

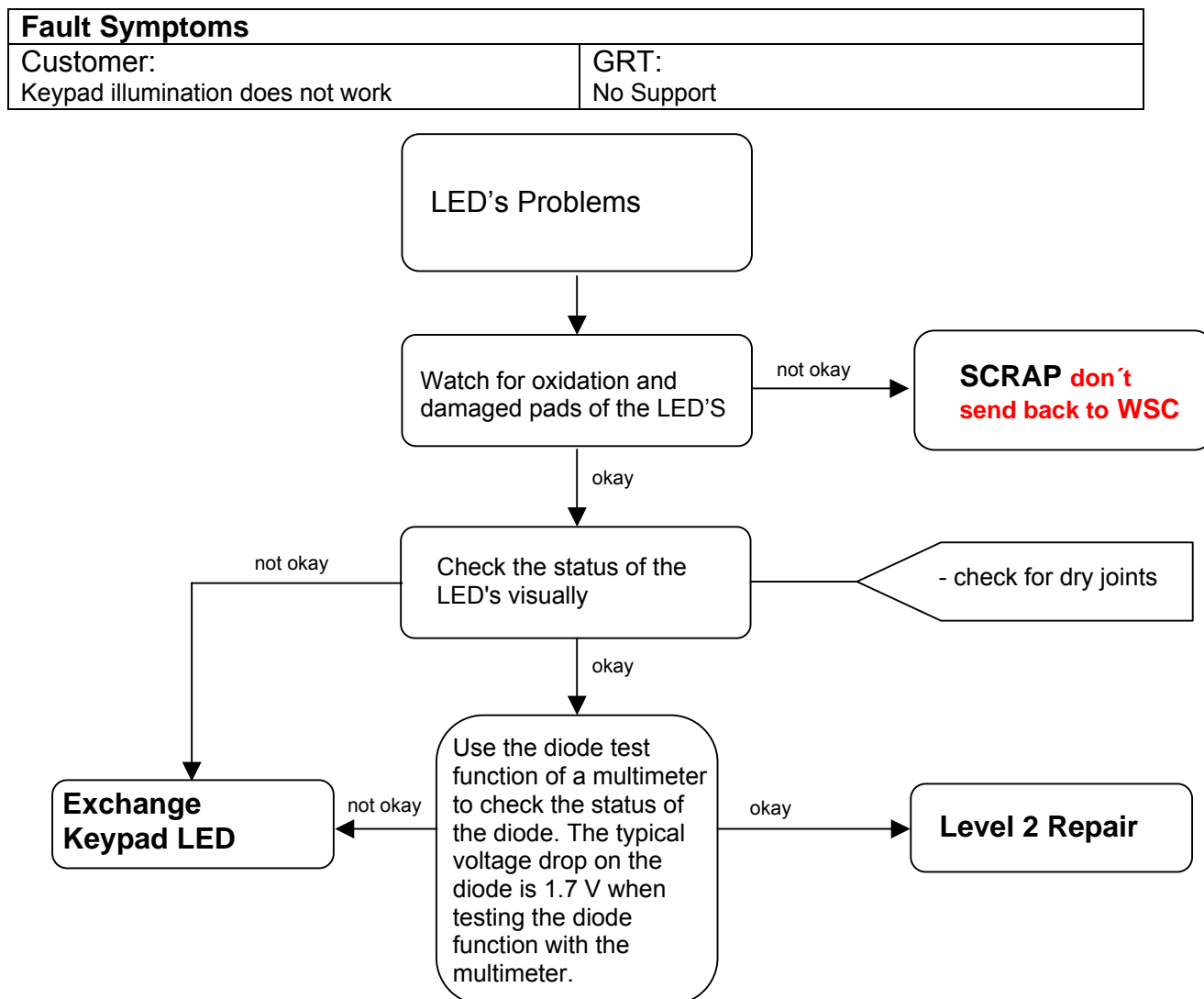


Connector BATTERY

Use soldering iron to remove defective component. Avoid excessive heat! Watch surrounding components! Resolder new component afterwards.

E-commerce order number: L50634-Z97-C59
Soldering temperature: 240 - 255°C
IRIS Diagnose Code: 13000 Battery/Mechanical Damage

5. White & Red/Green LED



White LED

Use soldering iron to remove defective component. Avoid excessive heat! Watch surrounding components! Resolder new component afterwards. **Attention: Remove Metal Dome Sheet before!!!**

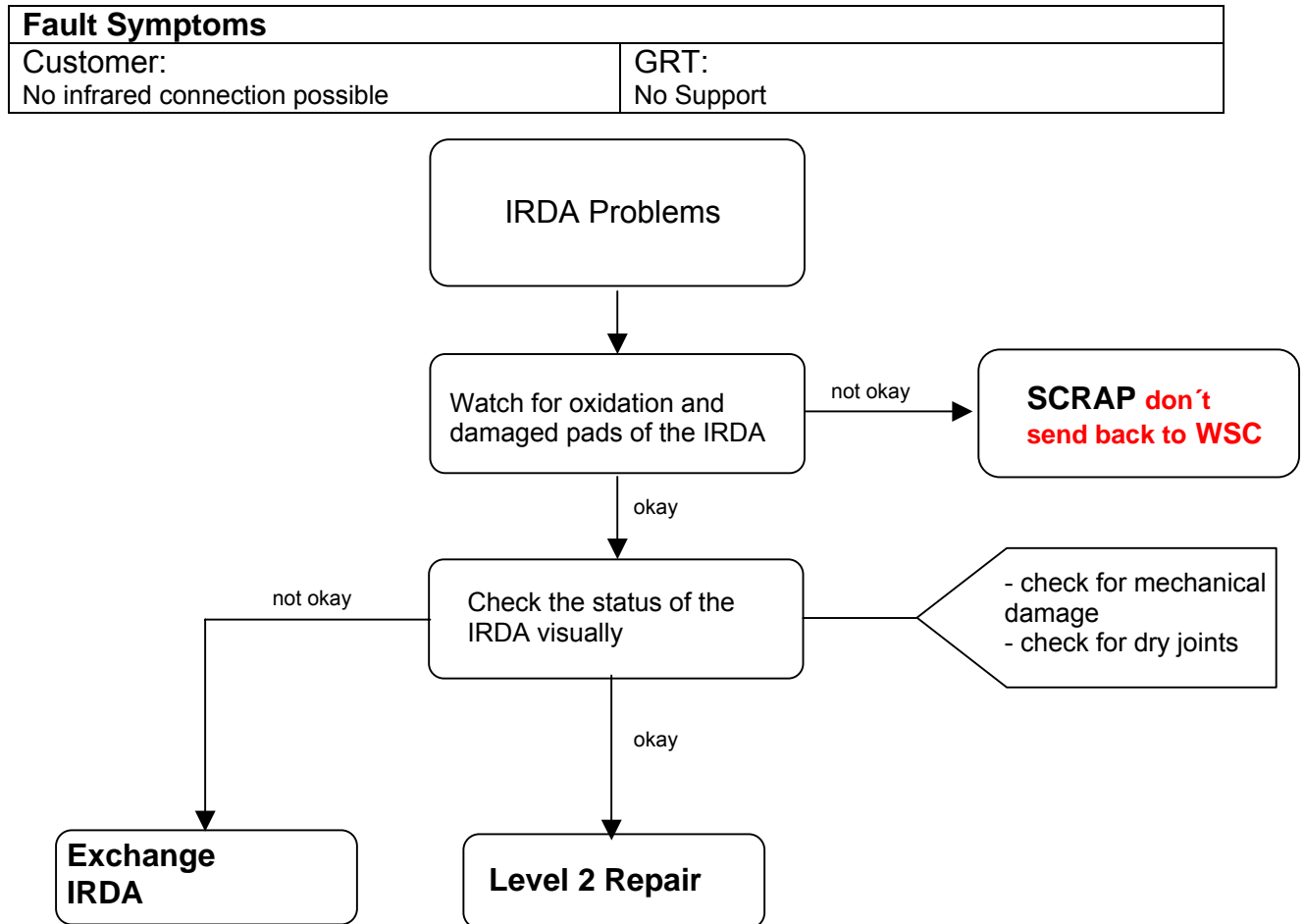
E-commerce order number: L50640-L2119-D670
Soldering temperature: 240 - 255°C
IRIS Diagnose Code: 36000 Keys/Illumination

LED Red/Green

Use soldering iron to remove defective component. Avoid excessive heat! Watch surrounding components! Resolder new component afterwards.

E-commerce order number: L50640-L2125-D670
Soldering temperature: 240 - 255°C

6. IRDA Communication Module



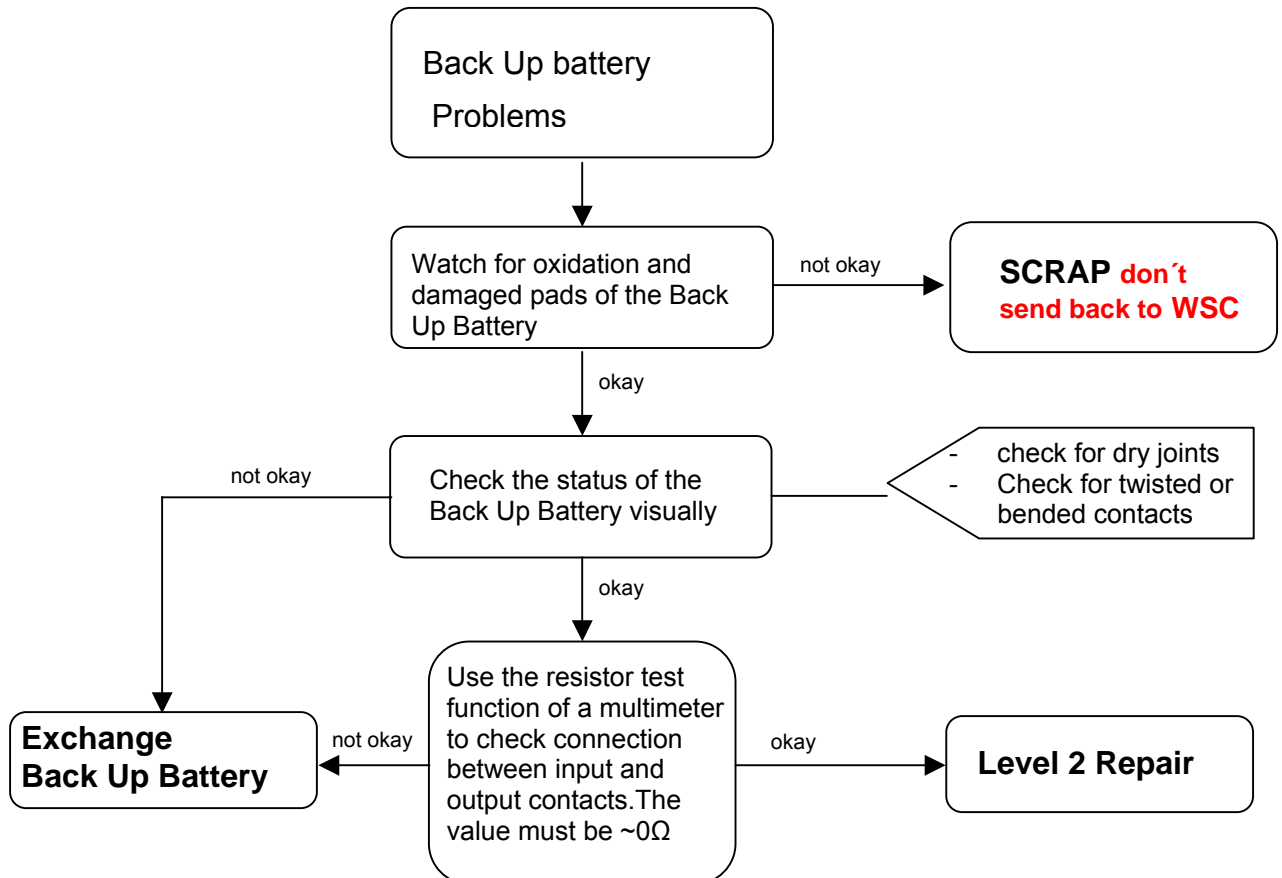
IRDA

Use soldering iron to remove defective component. Avoid excessive heat! Watch surrounding components! Resolder new component afterwards.

E-commerce order number: L50610-U6189-D670
Soldering temperature: 240 - 255°C
IRIS Diagnose Code: 41100 Interfaces / IRDA / No Function
41300 Interfaces / IRDA / Mechanical Damage

7. Back Up Battery

Fault Symptoms	
Customer: Customer parameter (date and time) are not saved when battery is removed	GRT: No Support



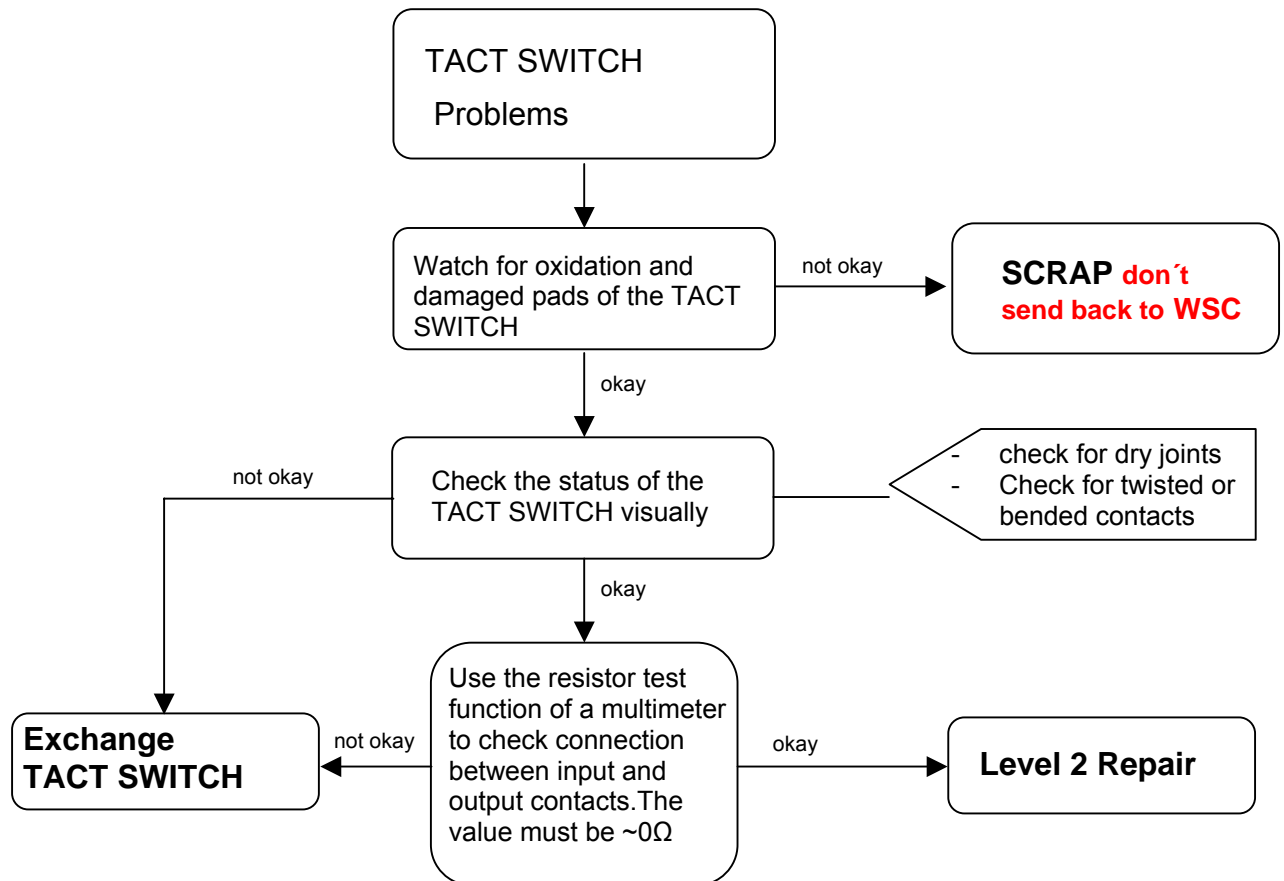
Back Up Battery

Use soldering iron to remove defective component. Avoid excessive heat! Watch surrounding components! Resolder new component afterwards.

E-commerce order number: L50628-F2705-Z1
Soldering temperature: 240 - 255°C
IRIS Diagnose Code: 9E000 : Battery / Backup Battery Performance

8. Side TACT Switch

Fault Symptoms	
Customer: Can not take picture, volume/flash does not work	GRT: No Support



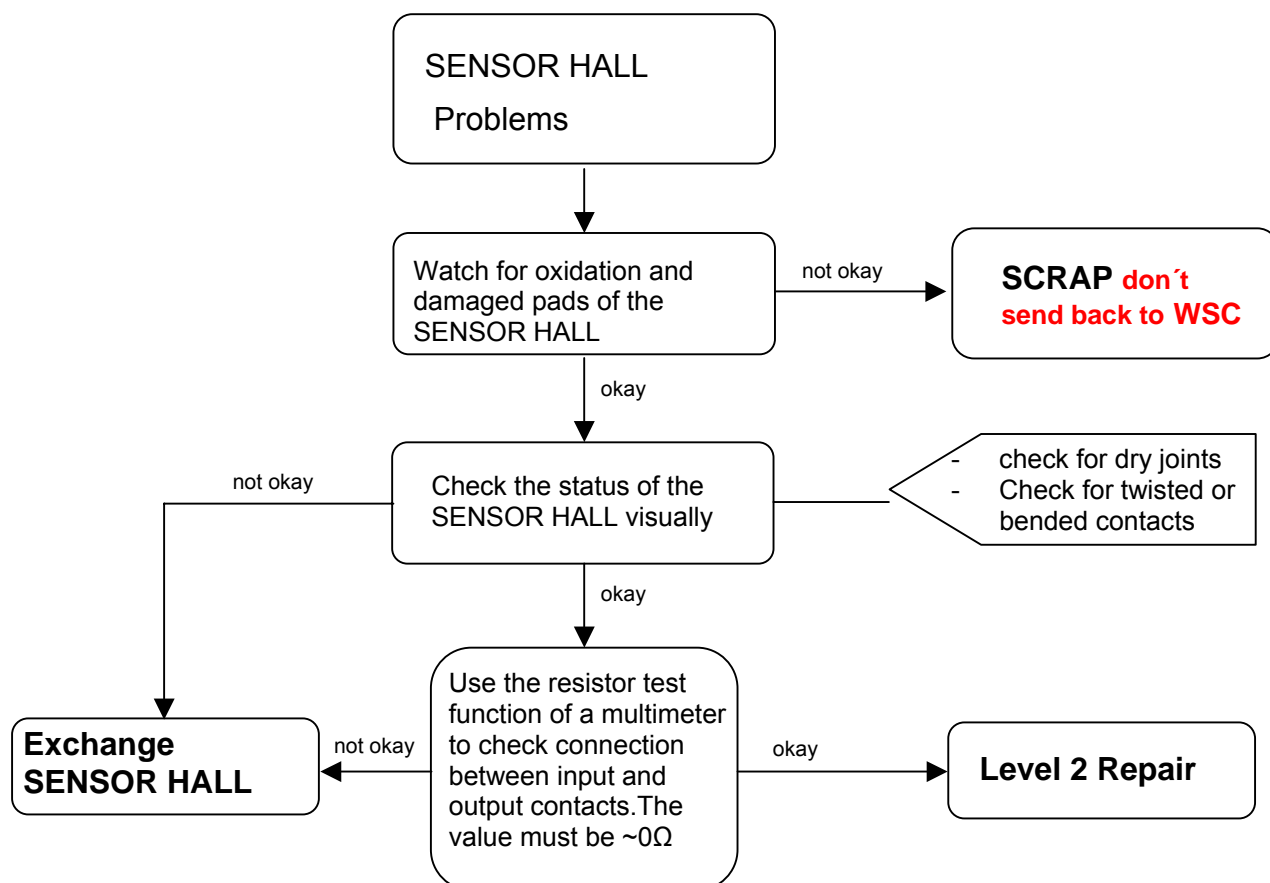
SIDE TACT SWITCH

Use soldering iron to remove defective component. Avoid excessive heat! Watch surrounding components! Resolder new component afterwards.

E-commerce order number: L50615-Z77-C257
Soldering temperature: 240 - 255°C
IRIS Diagnose Code: 34100 Keys / Side / No Function
34200 Keys / Side / Reduced Functionality
34300 Keys / Side / Mechanical Damage

9. Sensor Hall

Fault Symptoms	
Customer: Clamshell detection does not work (camera mode/LCD does not start)	GRT: No Support



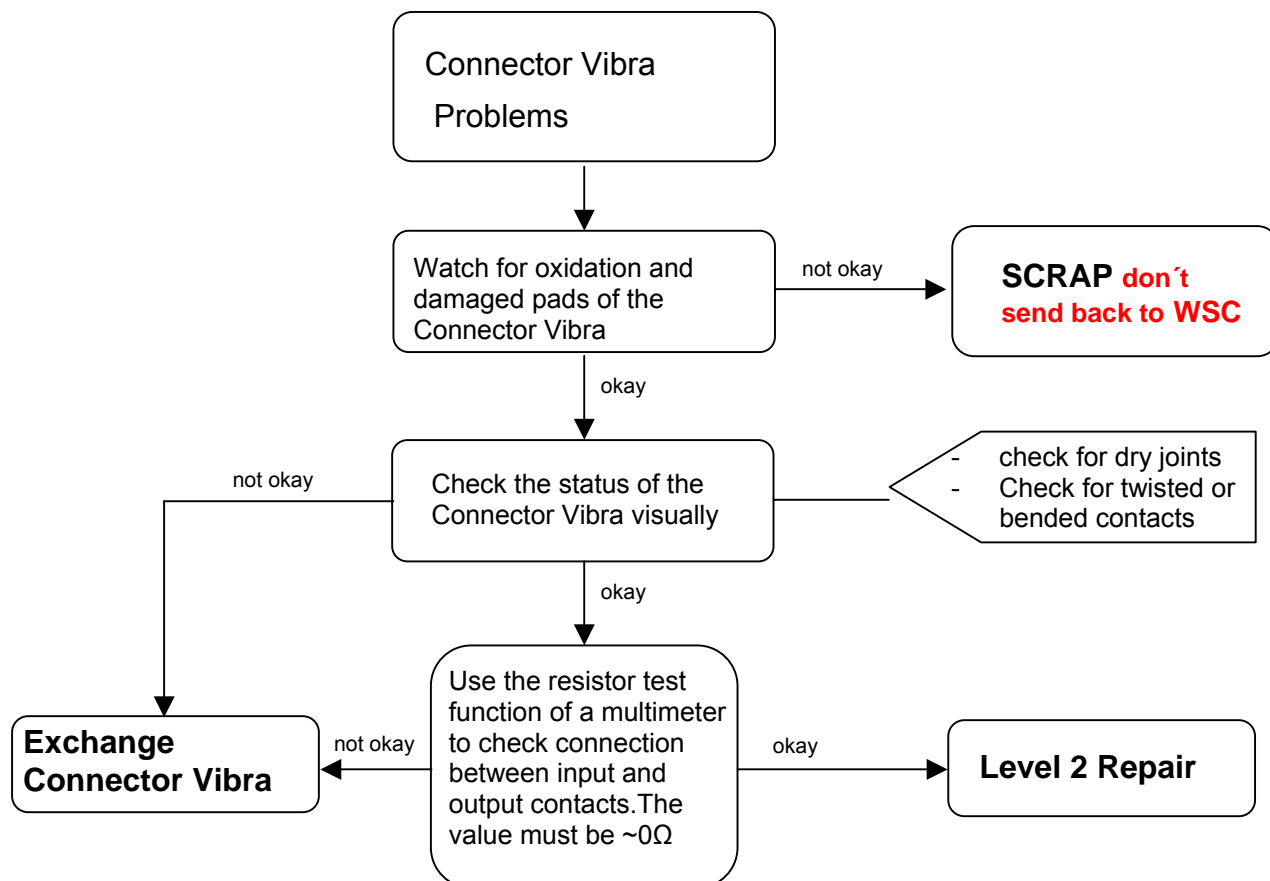
SENSOR HALL

Use soldering iron to remove defective component. Avoid excessive heat! Watch surrounding components! Resolder new component afterwards.

E-commerce order number: L50610-U6190-D670
Soldering temperature: 240 - 255°C
IRIS Diagnose Code:

10. Vibra Connector

Fault Symptoms	
Customer: Vibra does not work	GRT: No Support

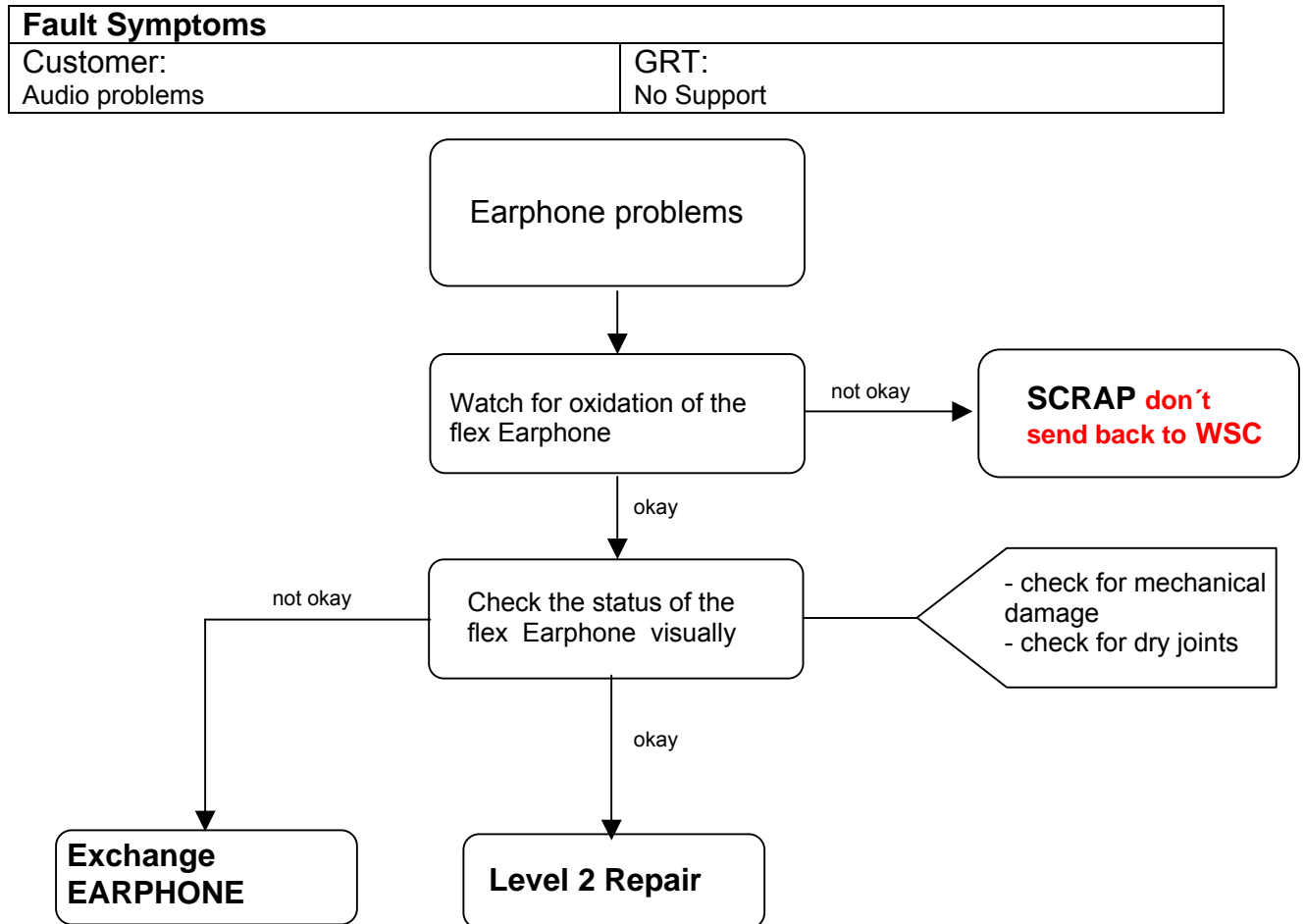


Connector Vibra

Use soldering iron to remove defective component. Avoid excessive heat! Watch surrounding components! Resolder new component afterwards.

E-commerce order number: L50634-Z97-C63
Soldering temperature: 240 - 255°C
IRIS Diagnose Code: 75100 : Acoustics / Vibra /No Function

11. Earphone

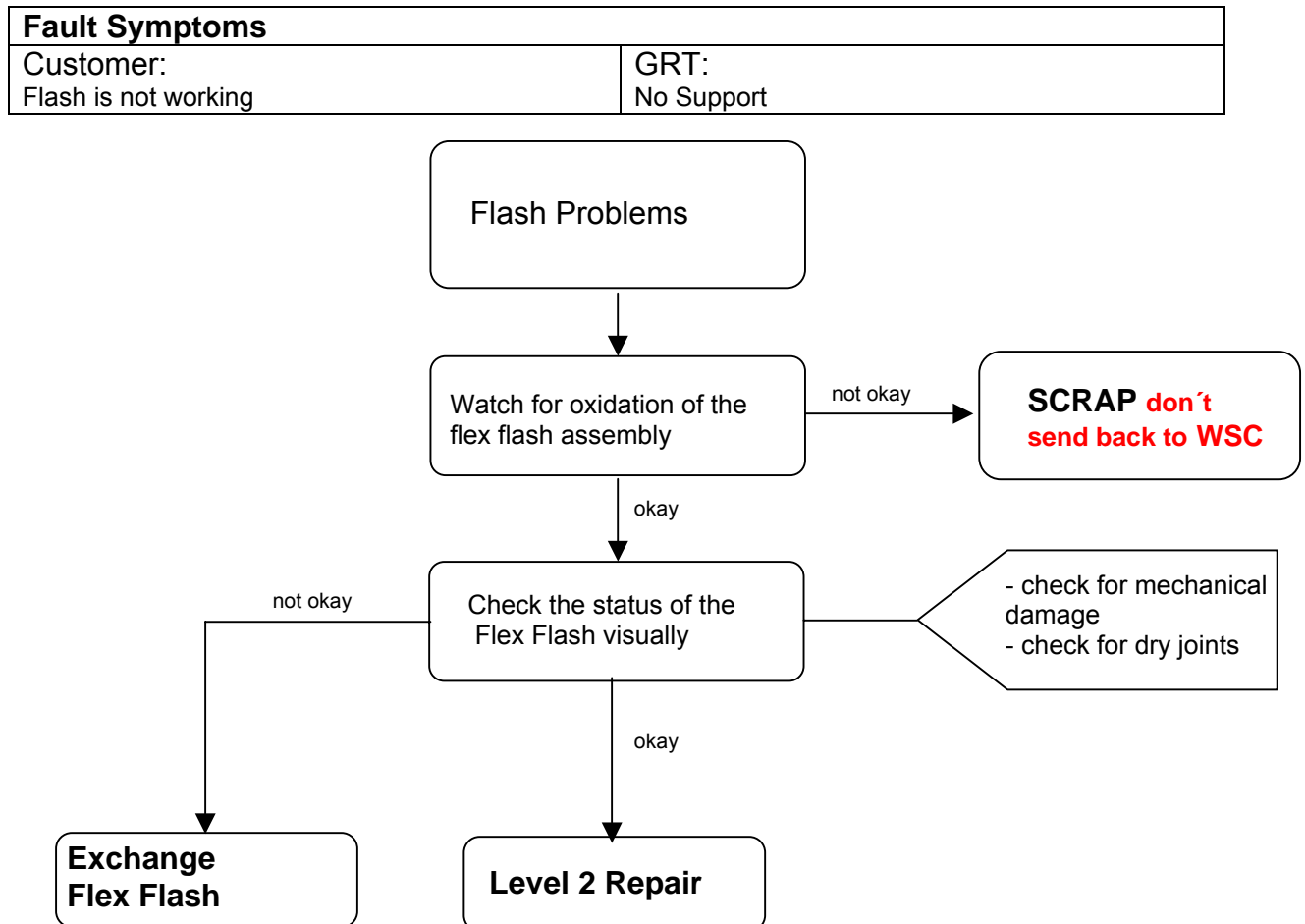


Earphone

Use soldering iron to remove defective component. Avoid excessive heat! Watch surrounding components! Resolder new component afterwards.

E-commerce order number: L50604-F3090-X923
 Soldering temperature: 240 - 255°C
 IRIS Diagnose Code: 72110 : Acoustics/Receiving/Earcap/No Function
 72110 : Acoustics/Receiving/Earcap/Noise

12. Flexible Camera Flash Assembly



Flex Camera Flash Assembly

Use soldering iron to remove defective component. Avoid excessive heat! Watch surrounding components! Resolder new component afterwards.

E-commerce order number: L50680-Q7360-F2
Soldering temperature: 240 - 255°C
IRIS Diagnose Code: 9B300 : Functionality /Integrated Camera / Flashlight defective