

1. About
2. How to use
3. Install
4. Supported devices
5. Copyright



1. About

Lights On is a software service which is able to automatically turn on and keep activated the screen light of the phone as long as the charger is plugged in or based on a timeout period. The screen light will never turn off until either the charger is plugged out or the timeout expires. It will also try to keep the keypad unlocked if you set this. You can also manually turn the light on/off using the applications settings.

Lights On is mainly useful while you are driving your car but you can easily use it for any other reason which requires keeping the screen light always turned on without your intervention.

When you plug the phone in the compatible car charger, after the inactivity time, many phones will turn the light off, showing the idle screen. This is very inconvenient because you can not easily see what the phone displays while you have to keep driving. **Lights On** reacts at the charger plug in events and will automatically keep the screen light activated/on allowing you to see and use the phone more easily. When you plug out the phone from the compatible car charger the screen light is turned back to the normal state (off); it will behave depending by the phone's light settings.

The application could also be used when you are in a darkness area and you need the screen light to be always turned on/active without to touch your phone periodically.

Note for use in car: Most of the car chargers (along with the phone holder/support if available) do not offer the automatic activation of the screen light and the **Lights On** application can help in this situation. If you use a car kit instead (not only a car charger) please check if it already has the built-in feature for keeping the light automatically turned on while the phone is plugged in.

2. How to use

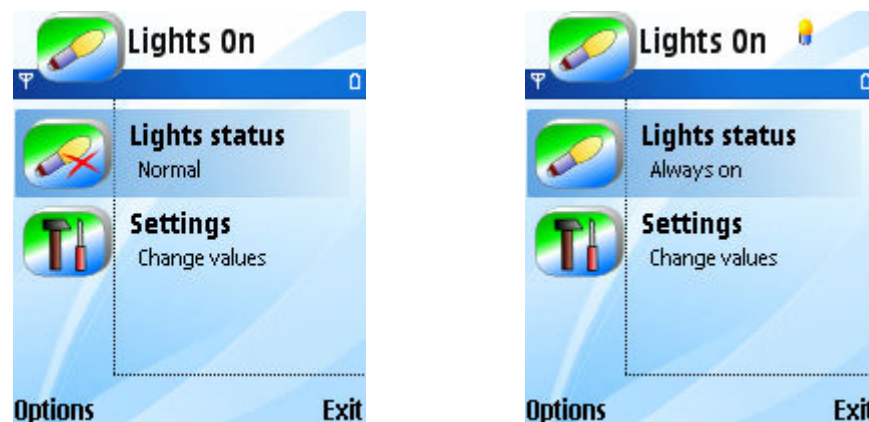
The light controlled by application is the phone main screen light but in some devices the keypad backlight will also be controlled by application.

The main menu

The lights status can be in one of the following state:

- ✓ **Normal (off)** state – in this state the lights behave as normally. They are controlled by the phone's lights settings.
- ✓ **Always on** state – in this state the lights are kept always on (activated). The lights are controlled by the **Lights On** application. The lights will never go in the **Normal/off** state until they are deactivated by the charger plug-out events, the timeout expiration period or you manually turn to the **Normal/off** state using the main menu.

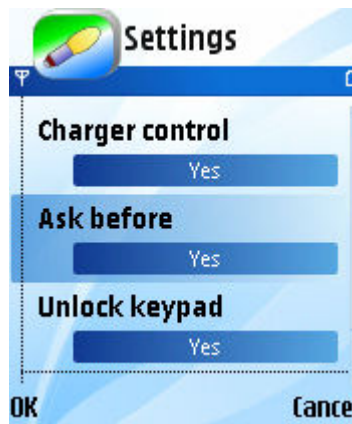
When the main menu is shown the current lights state is shown as below:



To manually switch the lights in the **Normal** or **Always on** state, select the **Lights status** option from the main menu and press the center pointer key or use the **Change** command available under the **Options** menu. If the state is **Always on**, the lights will go in the **Normal/off** state depending by the settings values available in the **Settings** main menu option.

Settings

To change the settings values, select the **Settings** option from the main menu and press the center pointer key or use the **Change** command available under the **Options** menu. The settings page is shown. After you have finished the changes of the setting, press **OK** to save or **Cancel** to dismiss the changes.



➤ **Charger control**

- if set on **Yes**:
 - When you **plug-in** the charger, the lights are turned to the **Always on** state if the lights were previously in the **Normal/off** state. If the previous state was already **Always on** then no action is performed.
 - When you **plug-out** the charger, the lights are turned to the **Normal/off** state if the lights were previously in the **Always on** state.
- if set on **No**:
 - The charger **plug-in/out** events will not control the lights state. You must manually turn on/off the lights state using the main menu. In this case there is available the **Timeout period** setting option.

➤ **Ask before** - this is only available if the **Charger control** is set on **Yes**.

- if set on **Yes**, a message box will ask for confirmation before to turn the lights in the **Always on** state. If no option is selected within 15 seconds, the message box is closed automatically and the lights status is not changed.
- if set on **No**, the lights will automatically be turned to the **Always on** state without asking for confirmation before.

➤ **Timeout period** - this is only available if the **Charger control** is set on **No**.

If this option is available you must manually turn the lights to the **Always on** state using the **Lights status** option from the main menu. This setting allows you to set a timeout period after which the lights status will be turned to the **Normal/off** state. The range is 5 minutes up to 600 minutes. If the timeout expires, the lights will be switched back to the **Normal/off** state if they were manually activated. The charger plug-in/out events will not be considered.

➤ **Unlock keypad**

- if set on **Yes**: if the lights state is **Always on** the keypad is checked periodically. If this is found to be locked, then it is unlocked.
- if set on **No**: if the lights state is **Always on** the keypad is not unlocked. Keypad state will not be changed.

➤ **Show icon**

- if this option is set on **Yes** and the lights state is **Always on**, then a small icon is shown in the upper-right corner of the screen to indicate the lights are in the **Always on** state.
- if this is set on **No**, then no icon is shown.

Notes

➤ Usually, the application should be kept with the lights in the **Normal/off** state and have the **Charger control** setting set on **Yes** as described above. The application will react at the charger plug-in/out events and the lights will be turned to the **Always on** or **Normal** state every time the charger plug events happen. If you manually set the lights in the **Always On** state and you also set the **Charger control** setting on **Yes** but you do not plug-in or plug-out the charger, the lights will be kept activated for an undefined period of time (it waits for charger plug-in/out events). To turn back to the **Normal** state, you must either manually do this using the **Lights status** main option or to plug-in/out the charger.

➤ Keeping the lights turned to the **Always on** state without the charger connected will consume the battery very fast. It is recommended to use in the car's charger while you are driving or use under a reasonable timeout period.

➤ Some devices will turn on also the backlight of the keypad if the **Always on** is set and the device is in a darkness area using its built in light detector. This is also useful while driving. The backlight of the keypad may not be kept turned on in all cases depending by device but the light of the main screen will be kept always on (active) if the lights are set in the **Always on** state.

➤ If you have installed the application on the memory card and the lights are in the **Always on** state, the lights will be turned back to **Normal** state if you remove the memory card and there is more than 5 seconds elapsed.

3. Install

You can install the **Lights On** application's file (.sis) using the Nokia PC Suite software from the device's CD. You can also send the installation file to the device's inbox folder using the cable, Bluetooth or the infrared devices. From the Inbox folder click the (.sis) file and the installation process will automatically start.

4. Supported devices

Lights On is designed to work on the Nokia Series 60, 3rd edition devices like: Nokia N95, E60, E70, E61, E62, E50, N91, N93, N92, N80, N73, N71, N76, N93i, N75, 5500, 3250.

5. Copyright and license

Lights On was developed and has copyrighted © **Tektronic SRL**, contact@tektronic.ro, <http://www.tektronic.ro>.

If you install and use this application you are required to agree with the license terms shown at the installation time on your device.