

Thank you for trying/purchasing InTextMan, which stands for **Intelligent Text Message (SMS) Manager**. **Special thanks to all of you who tried and liked our application and offered some really good advice for further development. We have done everything to satisfy your needs.**



What's new in Version 1.100

1. **InRegMan can now be used from the today/home screen. An icon (smiley) sits on the tray of the command bar (bottom). Click on it and you are in.**
2. **Previous emoticons replaced with neater looking ones**
3. **Once in InRegMan unread messages can be seen in red font, unless you have read or deleted them. This is true in case of both single message as well as threaded ones. This makes easier to locate unread messages**
4. **Registration system standardized.**

Why Use InTextMan?

- ✓ Because you want to enjoy SMS messaging just like Instant Messaging
- ✓ Because threaded messaging allows you to see all your incoming (received) and outgoing (sent) messages on one screen, nicely organized by contact, date and time.
- ✓ Because you can see the history of all messages (in/out) of any contact.
- ✓ Because you can continue the “dialogue” easily or can even broadcast (forward to many) a message (whether received or sent)
- ✓ Because you can begin a new dialogue and send to one or many contacts
- ✓ Because you can send emoticons as text symbols. If the recipient also has emoticon facility, she/he will see those, otherwise, she/he will not only see the symbol but also a short text saying what the symbol means. Makes it easy for you to express yourself simply by choosing an emoticon. You can also remove an incorrectly chosen emoticon by selecting it again. Then, you can replace it by choosing another. If the sender sends you an emoticon or a symbol, which matches the emoticons in InTextMan, you will see the emoticon popping up below the received message.
- ✓ Because InTextMan brings all folders (inbox, outbox, drafts, deleted, sent) on one screen so that you don't have to look for the folders

- ✓ Because InTextMan, unlike some other threaded SMS clients, does not tamper with your device's SMS client. This allows you to use InTextMan for threaded messaging, as well as your device's SMS client for synchronizing/backing up using standard sync methods, and firmware or third-party backup applications. Some available threaded SMS applications create new folders and move messages from your device's SMS client to its own folders. This can be problematic, if the threaded SMS application goes wrong, or if you have to perform factory reset.
- ✓ **Because you can always use your device's SMS client. InTextMan is an add on SMS manager.**
- ✓ Finally, because InTextMan is fun to use.

How to use?

Copy the InTextMan.cab file to your device or storage card. Choose it by pressing the enter key of your device's "joystick" or simply press with the stylus. Installation begins. Choose where to install (device or storage card).

Choose the InTextMan icon from <start-programs>



You will see the following page. Once there, from menu select "To Tray" and that's it. Deactivate means you want to keep InTextMan inactive till when you like, but this is not the desired option.



The page will close and a smiley will sit on the tray in the command bar (bottom of your device).



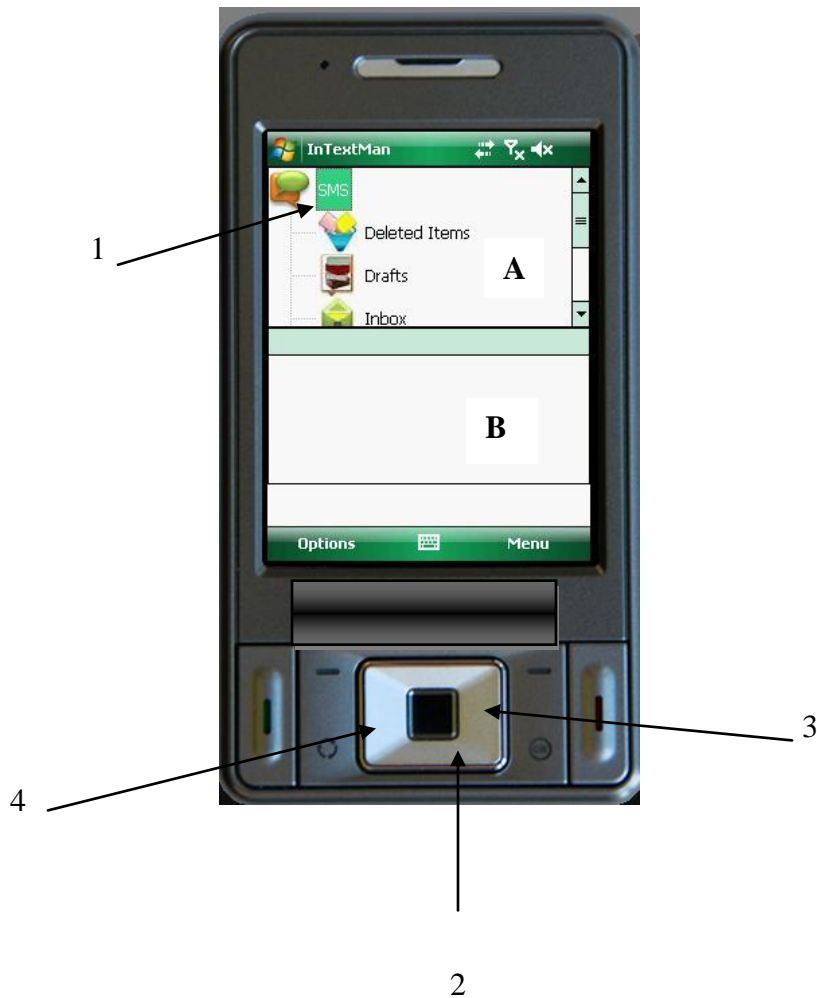
Here's the smiley

Then, whenever you want to use InTextMan, just choose – press/select the smiley on the tray.

As soon as you choose the smiley

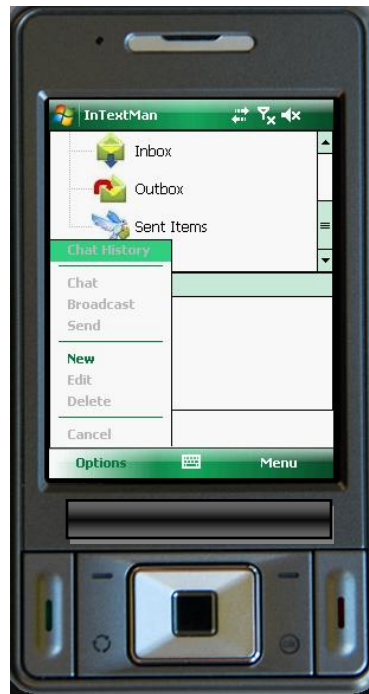
You will see the following screen:

Remember: you can use your device's hardware buttons, including hardware keyboard, if your device has one.



Arrow 1 shows where you can see your folders. Scroll down to see others, scrolling with navigation button (arrow 2) or stylus. To move from window A to next window B press right navigation (arrow 3). To move from window B to window A, press left navigation (arrow 4). In all cases, you can just use the stylus. Hardware buttons are for one handed use only.

Next, choose option, choose new to begin a new chat/SMS or choose exit from right Menu.



To continue with previous dialogues/chats, choose inbox or sent items. In both cases you will see some callout icons (arrow 5) and some none. Messages with call out icons mean you have received/sent more than one message from one source/contact. No call out means only one message.



The task bar (arrow 6) shows which folder you have chosen and how many items there are in the folder.

Scroll with navigation button or choose with stylus the contact/source you are interested in.



Then, from options, choose chat history. Or press and hold with stylus the chat history you want to open, or simply press the navigation “enter” button (the one in the center).

You will see the history of all in/out messages from the contact (Mr. Blackberry here in this example). The red arrow pointing up means sent item. The blue arrow pointing down means received item. You can see the date and time also.



Choose any message from the contact (Mr. Blackberry here), by date and time, which you are interested in. You will see the whole message.

Then, from options choose Chat or Broadcast.



You will get the window to write in. Don't worry about the contacts to who you want to broadcast, besides the one you have already chosen. You will be given the chance to enter number/add contacts when the time comes.

Enter text (using soft/hard keyboard), add emoticons (use stylus). Emoticons will appear in text format within your text, and will also show the icon below. This icon and others will appear in sequence as you choose emoticons from the right menu. To select/add an emoticon, tap once with your stylus. You can unselect an emoticon by tapping again on it with the stylus.

The emoticon(s) will be sent as text symbol as well as a small text definition (in case the recipient doesn't have emoticon enabled SMS client, it would be easy for her/him to understand your emotion, while you don't have to write your emotion, just choose from the emoticons). When you receive a standard emoticon symbol from the sender, the corresponding (out of the 16 available) emoticon will pop up with the message you have received. If you want to remove an emoticon from your message, just press the icon,

below your message with the stylus, and the icon as well as the symbol will be removed from your message.

When you are ready to send off, just press the arrow with the (flying dove above it), and there you go through another window of your device's SMS client.

If you are not ready to send, press exit from right menu and a dialogue box will prompt you to save to drafts. Choose your option.

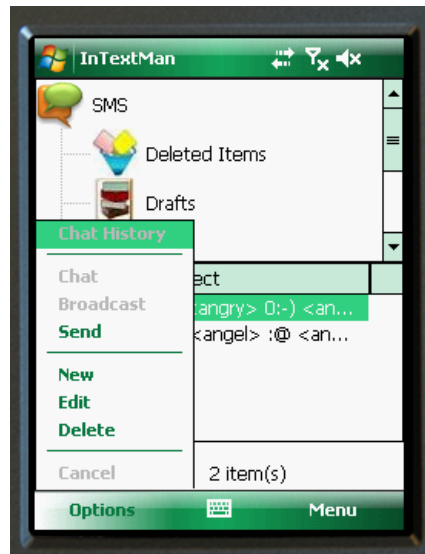


Before the message is sent or saved to drafts, your device's SMS client will appear to give you a choice of adding more recipients (broadcasting) or saving to drafts. The choice is yours.

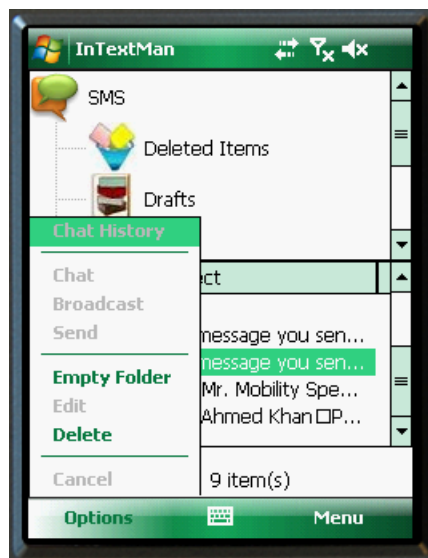


It's as simple as this. There is no limit to/from how many people you want to send/receive messages, and there is no limit to chatting to with one contact. It's fun throughout.

If you decide to edit/send a saved in drafts folder message, choose the drafts folder, choose the message, choose edit or send from the options menu, then edit and/or send.



If you want to delete a message, choose the deleted items folder, choose “empty folder” or choose a message to delete. If a message is dialogued (more than one incoming or outgoing from/to one source, with the call out icon, then, while deleting it, you will be prompted that there are more than one items in that dialogue. In that case, you will have to choose show history from options first and then delete one or more messages one by one. This is to make sure that you know which messages you really want to delete, instead of deleting all messages from/to a given contact or source.



And, just to make sure your device's SMS client is intact and all your messaging is recorded for synchronizing, backing up. You can always go back to your device's text message client and see for yourself. Everything's there. No tampering, no messages lost, no worries.



When you receive a message, ideally your device SMS notification will show first, followed by another smiley (on the navigation bar-top of your device). If you choose your device's notification, you will be taken to your device's SMS client. If you choose the smiley, you will be taken to InTextMan's inbox. Because of different user setups, this might not be the case always. That's why, you may ignore/dismiss all notifications and just choose the smiley at the bottom (tray). It will take you to InTextMan's inbox, where you will find all unread messages (whether single or threaded in read font). Once you have read an unread message, it will turn black. The rest is up to you whether you want to chat (reply), broadcast (send to many) or delete the message(s)

Please Note: InTextMan's input methods are 5-way navigation, soft keys, hardware keyboard, on-screen key board, and stylus. You can choose any method or combination of methods. Only for selecting and unselecting emoticons you need the stylus.

If you need any technical help or advice from us, or if you have any suggestions for us, please feel free to email us at:
tech@intellizer.com

Have fun & Thank You.