



Exam : HP0-773

Title : Installing & Supporting Standard HP SAN
Environments

Ver : 04-09-09

QUESTION 1:

What happens to non-zoned devices if you enable zoning in a B-series environment?

- A. Devices become inaccessible.
- B. Devices become members of the default zone.
- C. Devices become members of all zones of the active configuration.
- D. Zoning will not be enabled unless all active members are part of a zone.

Answer: A

QUESTION 2:

You are unable to remotely connect to a working HAFM appliance. The customer verified the LAN cable and the IP-address at the appliance LCD. What should be done next?

- A. Restart the appliance.
- B. Reinstall the appliance.
- C. Reconfigure the appliance.
- D. Replace the appliance.

Answer: A

QUESTION 3:

Which SAN fabric topology offers the most efficient cost per port?

- A. meshed
- B. ring
- C. cascaded
- D. fat tree

Answer: C

QUESTION 4:

Which management category is addressed by the Storage System Scripting Utility?

- A. SAN and Storage Usage and Monitoring
- B. SAN Data Management
- C. SAN Fabric Management
- D. SAN Storage Management

Answer: D

QUESTION 5:

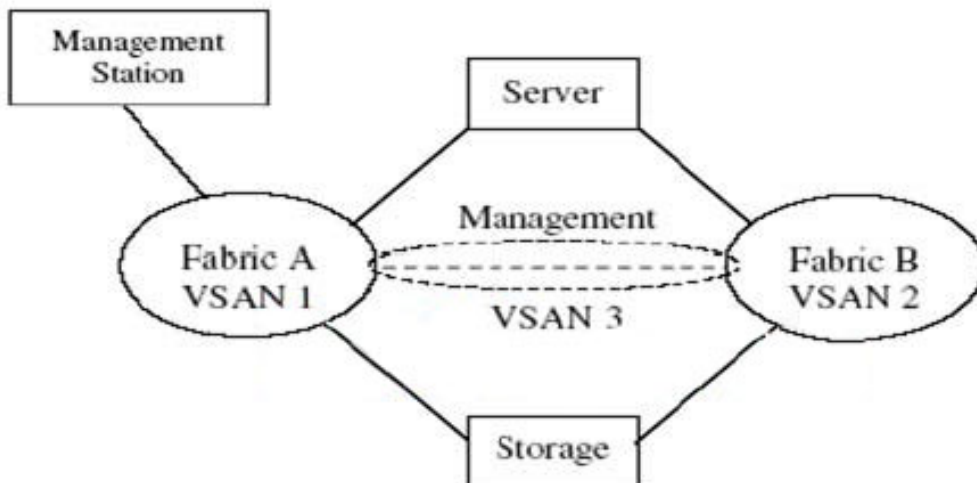
In a disaster tolerant SAN with Continuous Access, what is the minimum number of switches for an NSPOF configuration?

- A. 2
- B. 4
- C. 6
- D. 8

Answer: B

QUESTION 6:

Exhibit:



Which switches can you use to make the illustrated SAN environment operational?

- A. B-series switches exclusively
- B. B-series and C-series switches mixed within both fabrics
- C. B-series switches for fabric A and C-series switches for fabric B
- D. C-series switches exclusively

Answer: D

QUESTION 7:

What happens if you set a B-series Director switch from native to core switch addressing mode?

- A. The switch supports more than 16 ports.

- B. The fabric supports more than 127 devices.
- C. The switch supports E_Ports.
- D. The fabric supports the mesh topology.

Answer: A

QUESTION 8:

Exhibit:

Edge Fabric Scalability		
Domains (see Figure 36)	Maximum number of front domains (# EX-ports) per edge fabric	24
	Maximum number of translate domains (# of remote fabrics) per edge fabric	6
	Maximum number of physical switches in an edge fabric	34
	Maximum number of total domains per edge fabric (physical domains + front domains + translate domains)	64
Devices (User Ports)	Maximum number of local and remote devices per edge fabric (For edge fabrics with greater than 600 devices, v4.20c or later is required for all switches in the fabric when using the MP Router)	1280
	Maximum number of imported devices per edge fabric	1000
LSAN Zone Scalability		
Zoning	Maximum number of entries per LSAN zone	200
Routed Fabrics (Meta SAN) Scalability		
Edge Fabrics	Maximum number of edge fabrics connected to a routed fabric	32
Meta SAN	Maximum number of total ports per routed fabric	4000
Routers	Maximum number of MP Routers per routed fabric	3
LSAN	Maximum number of LSAN device entries per routed fabric	3000
	Maximum number of LSAN zones per routed fabric	1000
Hop Count Scalability		
Hop Count	Maximum number of hops between switches (including routers) in a Meta SAN. See Figure 35 – diagram of hop counts	7

Two fabrics (A and B) are interconnected by a StorageWorks MP Router. What is the maximum number of device addresses in fabric B that can be mapped to addresses in fabric A?

- A. 32
- B. 200
- C. 1000
- D. 3000

Answer: C

QUESTION 9:

In a multipathing SAN, fabric A is exclusively built from M-series switches and fabric B exclusively from B-series switches. What is the recommended maximum switch hop count for each fabric?

- A. 7 for fabric A, 3 for fabric B
- B. 3 for each fabric
- C. 6 for fabric A, 2 for fabric B

D. 2 for each fabric

Answer: B

QUESTION 10:

What is the most important consideration if a service level requirement is high availability?

- A. capability to scale incrementally over time as storage and connectivity needs increase
- B. decision to implement a dual redundant SAN
- C. implementation of serverless backup
- D. decision to use iSCSI instead of Fibre Channel

Answer: B

QUESTION 11:

In addition to the SAN Design Reference Guide and the Enterprise Backup Solution Design Guide, what do you need to validate a SAN design with an integrated Enterprise Backup Solution (EBS)? Select TWO.

- A. SAN Compatibility Matrix
- B. EBS Compatibility Matrix
- C. SAN and EBS Sizer Tool
- D. Backup Sizing Tool
- E. SAN Storage Planner

Answer: BD

QUESTION 12:

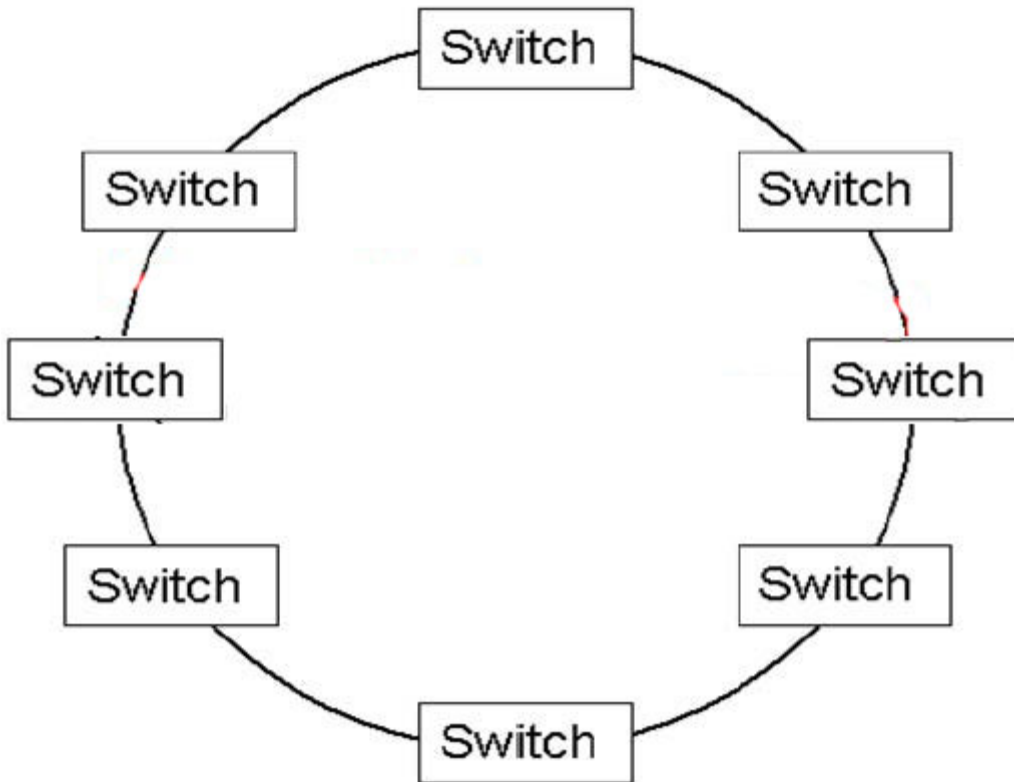
A customer with HP-UX and Linux servers and EVA storage subsystems wants to integrate all components into one disaster tolerant configuration. What is the best product?

- A. Business Copy
- B. Continuous Access
- C. Secure Path Manager
- D. High Availability Fabric Manager

Answer: B

QUESTION 13:

Exhibit:



A customer requests a replacement of B-series switches with M-series switches in the configuration shown in the exhibit. Why is it NOT possible to fulfill the customer's request as a supported solution?

- A. Only Brocade supports a ring topology.
- B. The maximum number of switch hops is three.
- C. A minimum of two inter-switch links is required.
- D. Ring topology requires an uneven number of switches.

Answer: B

QUESTION 14:

After gathering all customer requirements, you offer a solution. There are different validation levels available to ensure the solution meets or exceeds the customer's needs. Which method is NOT adequate?

- A. Setup a test environment which addresses most key aspects.
- B. Compare the solution against the rules of the SAN Design Guide.
- C. Compare the solution against the rules of the OEM manufacturer.
- D. Choose a supported standard solution of the SAN Design Guide.

Answer: C

QUESTION 15:

What should you use to determine the power consumption and BTU rating?

- A. Hardware Support Matrix
- B. SAN Design Reference Guide
- C. Product Installation Guide
- D. training material

Answer: C

QUESTION 16:

What must you do to connect any device to a switched fabric?

- A. Check that the device has a unique WWN.
- B. Assign an AL-PA to the device.
- C. Assign a 24-bit Fibre Channel address to the device.
- D. Nothing. The WWN is hardcoded on all Fibre Channel devices.

Answer: A

QUESTION 17:

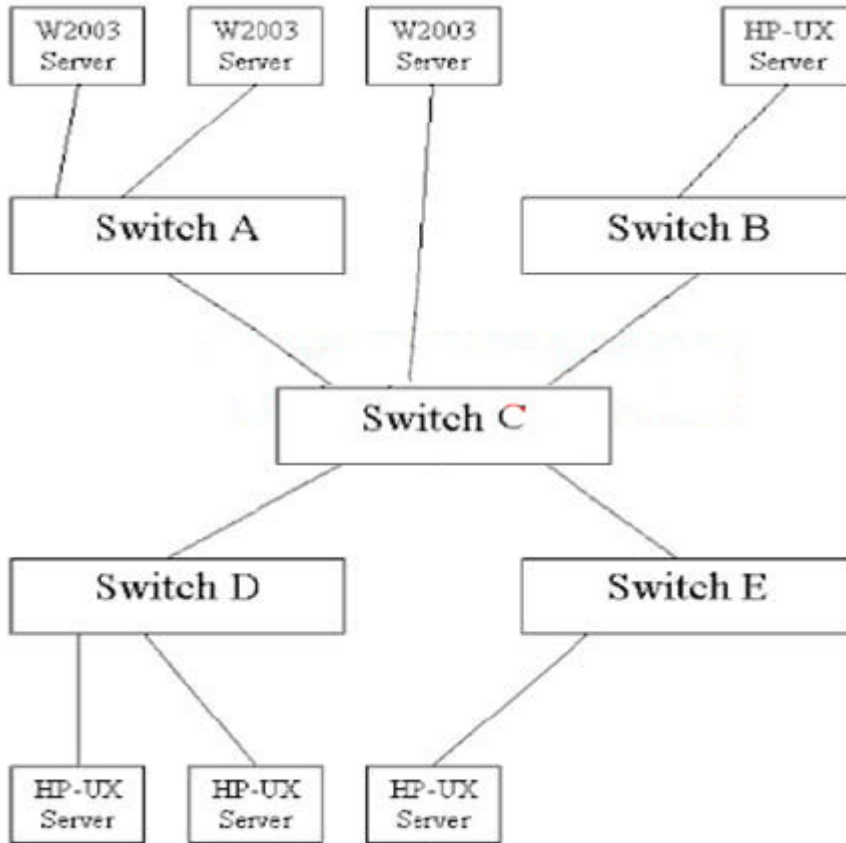
How do you add a new device to an active zone on a B-series switch?

- A. Disable the zone configuration before you add a device to a zone.
- B. Disable the zone to which you add the device.
- C. Add the device to the active zone and re-enable the configuration.
- D. Add the device to the active zone and save the changes.

Answer: C

QUESTION 18:

Exhibit:



To which switch in the configuration shown should you connect a storage system if it is used primarily by the W2003 servers?

- A. A
- B. B
- C. C
- D. D

Answer: A

QUESTION 19:

Which action provides a B-series switch environment with the highest security level?

- A. Install Secure Fabric OS.
- B. Install Secure Path.
- C. Use WWN level zoning only.
- D. Install High Availability Fabric Manager.

Answer: A

QUESTION 20:

What happens if you add a switch with an active zone configuration to a zoned fabric?

- A. The zones are automatically merged if they are not overlapping.
- B. All zones are disabled.
- C. The fabric becomes segmented.
- D. The whole fabric becomes disabled.

Answer: C

QUESTION 21:

Why is it recommended to use a separate HBA for EBS in a multipathing SAN environment?

- A. It improves performance and reduces host configuration complexity.
- B. Secure Path functionality is limited to active/standby if tapes are connected to the same HBA.
- C. Only Fibre Channel loop ports are supported with libraries.
- D. It avoids a failover if the backup fails.

Answer: A

QUESTION 22:

How can you make a supported storage system available to servers with known operating system interaction problems?

- A. Use a second storage system.
- B. Assign different ports of the storage array to different servers.
- C. Create different zones for the servers and assign the storage port to both zones.
- D. Use SSP and make sure the correct operating system is selected for the LUN.

Answer: C

QUESTION 23:

Which task CANNOT be accomplished using HP OpenView Storage Area Manager?

- A. topology and resource design
- B. usage metering and billing
- C. capacity management
- D. device management

Answer: A

QUESTION 24:

What must be considered when integrating a backup solution into a SAN?

- A. Backup requirements can be determined after the implementation of the SAN.
- B. Backup requirements should be determined when designing the SAN.
- C. Backup devices must support serverless backup.
- D. Library integration is not critical because the bandwidth requirements of tape drives are low.

Answer: B

QUESTION 25:

A customer needs to centrally manage and monitor the status of all SAN components. Which software do you recommend?

- A. Fabric Watch
- B. HP OpenView Storage Node Manager
- C. Fabric Manager
- D. HP OpenView Reporter

Answer: B

QUESTION 26:

Why should you inform customers about training offered by HP educational services and training partners?

- A. to enable customers to resolve failed Fibre Channel connections
- B. because HP service for SAN environments is only available in selected geographical areas
- C. to enable customers to effectively use the SAN environment
- D. because services offered by HP are for standard, not complex SAN environments

Answer: C

QUESTION 27:

Which firmware version is recommended in a mixed 1Gb/s and 2Gb/s M-series fabric?

- A. the most current firmware version whether it is a 1 or 2 Gb/s switch

- B. the most current firmware version on the 2 Gb/s switches only
- C. There are no firmware version restrictions.
- D. a special multi-speed firmware version

Answer: A

QUESTION 28:

Which HP tool is recommended to manage an M-series fabric consisting of director and edge switches?

- A. Web Tools
- B. Fabric Manager
- C. Embedded Web Server
- D. High Availability Fabric Manager

Answer: D

QUESTION 29:

An M-series switch is reset to factory default and Open Trunking becomes inoperable. How do you solve the problem?

- A. Reboot the switch.
- B. Reinstall the feature keys.
- C. Power cycle the switch.
- D. Disconnect and reconnect the switch.

Answer: B

QUESTION 30:

To solve a customer problem, a remote login to a recently installed HAFM appliance is required. The customer does not know the username and password. Which factory default login should be used?

- A. admin / password
- B. Administrator / Administrator
- C. Administrator / password
- D. administrator / Password

Answer: C

QUESTION 31:

Which M-series feature key is required to implement fabric binding and switch

binding?

- A. open systems management server
- B. FICON management server
- C. Open Trunking
- D. SANtegrity

Answer: D

QUESTION 32:

An HAFM appliance must be shut down for maintenance reasons. Which operations are NOT interrupted?

- A. configuration changes
- B. Fibre Channel traffic
- C. switch monitoring
- D. logging events

Answer: B

QUESTION 33:

Which security mechanism describes hard zoning?

- A. discovery authorization
- B. network authentication
- C. login authentication
- D. access authorization

Answer: D

QUESTION 34:

Soft zoning on B-series switches is based on ____.

- A. enforcement at ASIC level
- B. use of the simple name service
- C. inquiry to the fabric management station
- D. routing service calls

Answer: B

QUESTION 35:

Which command sequence is correct (from left to right) to permanently remove all

zoning configuration from B-series switches?

- A. cfgClear, cfgDisable, cfgSave
- B. cfgDisable, cfgSave, cfgClear
- C. cfgDisable, cfgClear, cfgSave
- D. cfgSave, cfgDisable, cfgClear

Answer: C

QUESTION 36:

What is the effect of the supportShow command on a B-series switch?

- A. shows Brocade's support phone number
- B. shows the service level agreement
- C. displays important switch support information
- D. downloads help information from the online support center

Answer: C

QUESTION 37:

Which B-series command displays a summary list of the switch ports?

- A. errShow
- B. switchShow
- C. portShow
- D. portstatsShow

Answer: B

QUESTION 38:

Which B-series command is used to check the connectivity of Fibre paths while the switch is online?

- A. spinSilk
- B. camTest
- C. crossPortTest
- D. portLoopbackTest

Answer: C

QUESTION 39:

What is the maximum number of addressable ports per B-series switch running in

Native Address mode?

- A. 8
- B. 16
- C. 32
- D. 64

Answer: B

QUESTION 40:

You are extending an established B-series fabric that uses Native Address mode with a new high port count switch. The customer cannot reboot the servers at this time. Which address mode solves this problem?

- A. Native PID format
- B. Core PID format
- C. Extended Edge PID format
- D. Advanced Core PID format

Answer: C

QUESTION 41:

You are replacing the control processor card, CTP2, of an M-series Director switch. Which action is required before removing the CTP?

- A. Shut down CTP2.
- B. Shut down the switch.
- C. Power off the switch.
- D. Make CTP2 passive.

Answer: D

QUESTION 42:

You replace a failed switch in a high availability topology. Which device status is reported in Secure Path while the redundant path is missing?

- A. failed
- B. working
- C. reduced
- D. degraded

Answer: D

QUESTION 43:

You are replacing a failed switch in a B-series fabric. In addition to issuing the configDefault command on the replacement switch, what must be done before connecting it to the fabric?

- A. No preparation is needed.
- B. Manually set up all zoning on the new switch.
- C. Unzone the switch and set up the IP address from the replaced switch.
- D. Upload the configuration from a surviving switch and download it to the new one.

Answer: D

QUESTION 44:

You add a switch to an M-series fabric. Which IP address type is accepted for the ethernet port?

- A. dynamic DHCP address in the range 10.*.*.*
- B. static address in the range 192.168.0.*
- C. static address in the range 10.*.*.*
- D. fixed DHCP address in the range 192.168.0.*

Answer: C

QUESTION 45:

You successfully added a new switch to a zoned B-series fabric. Which additional command should be executed at the new switch?

- A. cfgClear
- B. cfgSave
- C. cfgEnable
- D. cfgDisable

Answer: B

QUESTION 46:

You add a switch to a B-series fabric. Its IP address is unknown, so you must use the serial port. Which port attributes must be configured in the terminal emulation in addition to 8 bit, no parity, 1 stop bit?

- A. 9600baud, hardware flow control
- B. 19200baud, hardware flow control
- C. 9600baud, no flow control

D. 19200baud, no flow control

Answer: C

QUESTION 47:

You connect a new Storage Management Appliance (SMA). How many cable connections are recommended to fully integrate the SMA?

- A. 1 power, 1 fiber, 1 ethernet
- B. 2 power, 2 fiber, 2 ethernet
- C. 1 power, 2 fiber, 2 ethernet
- D. 2 power, 1 fiber, 2 ethernet

Answer: B

QUESTION 48:

You add a new Storage Management Appliance (SMA) at a customer site where no DHCP service is running. How can you assign a static IP address to the integrated remote console (iLO)?

- A. Use the System Insight Manager.
- B. Use F8 key during power-on to enter the setup options.
- C. Set up during SMA recovery process.
- D. Use Del key during power-on to enter system BIOS.

Answer: B

QUESTION 49:

What can you do when you launch Embedded Web Server (SANpilot)?

- A. Communicate with SAN users.
- B. Create RAIDsets and LUNs.
- C. Configure an M-series switch.
- D. Control paths to remote hosts.

Answer: C

QUESTION 50:

What happens if switch binding is enabled on a SAN switch?

- A. Inter-switch link trunking is disabled.
- B. New GBICs on the switch must be registered to become operable.

- C. Devices cannot be moved to a different port.
- D. New devices must be registered to become operable.

Answer: D

QUESTION 51:

Which information should be provided to the storage controllers so that a server can properly utilize the assigned SAN storage?

- A. operating system type
- B. server platform code
- C. controller password
- D. file system type

Answer: A

QUESTION 52:

Which license is required for fabric wide resource utilization analysis on B-series switches?

- A. OpenView Storage Builder
- B. Fabric Resource Analyzer
- C. Selective Storage Presentation
- D. Advance Performance Monitor

Answer: D

QUESTION 53:

A customer has a SAN environment with EVA storage systems, multiple hosts, and no SAN security application. The primary association table that enables a host-to-LUN connection is located on the ____.

- A. EVA subsystem
- B. SAN switches
- C. SAN management server
- D. associated hosts

Answer: A

QUESTION 54:

A working connection from a host to SAN storage is defined by the HBA WWN, storage port WWN and ____.

- A. switch port number, LUN
- B. operating system
- C. operating system, LUN
- D. operating system, connection alias

Answer: C

QUESTION 55:

Which tools CANNOT be used for data management in a SAN? Select TWO.

- A. Virtual Replicator
- B. Fabric Watch
- C. Business Copy
- D. Continuous Access EVA
- E. Storage Node Manager

Answer: BE

QUESTION 56:

Why should event logging be enabled on all devices connected to a SAN?

- A. Distributed event logging keeps the device event logs small and prevents buffer overflow.
- B. Enabling event logging replicates the event log to other devices for information redundancy.
- C. Event filtering will not work correctly if event logging is not enabled.
- D. Certain events such as "signal loss" are detected only in the locality of the problem.

Answer: D

QUESTION 57:

What is an aspect of physical SAN security?

- A. centralized SAN management
- B. no-single-point-of-failure SAN design
- C. employment of at least two SAN managers
- D. restricted direct access to SAN devices

Answer: D

QUESTION 58:

Which statement is correct?

- A. Dual fabrics provide enhanced SAN security.
- B. Zoning is an implementation of access control.
- C. Cascaded switches provide optimum performance.
- D. Inter-switch link trunking is an implementation of static routing.

Answer: B

QUESTION 59:

DRAG DROP

You are implementing a Fibre Channel fabric. Using SAN design best practices, arrange the implementation steps in the correct order by dragging and dropping the boxes.

Step1:	<div>place here</div>	<div>Configure switch parameters.</div>
Step2:	<div>place here</div>	<div>Zone the fabric.</div>
Step3:	<div>place here</div>	<div>Create a configuration map.</div>
Step4:	<div>place here</div>	<div>Implement inter-switch links.</div>

Answer:

QUESTION 60:

DRAG DROP

Arrange the steps to power up a SAN environment in the correct order by dragging and dropping the boxes.

Step 1:	place here	Power on and boot server.
Step 2:	place here	Power on core switches.
Step 3:	place here	Power on storage arrays.
Step 4:	place here	Verify SAN operation.
Step 5:	place here	Power on edge switches.
Step 6:	place here	Verify that all devices are powered off.
Step 7:	place here	Verify that fabric switches are operational.

Answer:

QUESTION 61:

DRAG DROP

Arrange the steps to power down a SAN environment in the correct order by dragging and dropping the boxes.

Step 1:	place here	Power down storage array.
Step 2:	place here	Power down switches.
Step 3:	place here	Power down hosts.
Step 4:	place here	Verify operational state.

Answer: