

**Actualtests.com**

The Power of Knowing



Exam : 9A0-803

Title : Certified Dreamweaver8 Developer Exam

Ver : 03.25.09

**QUESTION 1:**

How are case-sensitive links checked in Dreamweaver?

- A. when viewing the site definition for the site, go to the Advanced Tab and check Case-Sensitive Links in the Local Info category
- B. Dreamweaver automatically detects case-sensitive links
- C. from the Link Checker tab within the Results panel, choose Settings > Case-Sensitive Links
- D. when viewing the site definition for the site, go to the Advanced Tab and choose UNIX from the Server Type drop down menu in the Remote Info category

Answer: A

---

**QUESTION 2:**

What CANNOT be controlled in the Site Map Layout?

- A. change number of rows
- B. display hidden files
- C. display dependent files
- D. change number of columns

Answer: A

---

**QUESTION 3:**

What actions can be performed when multiple, NON-consecutive, cells are selected?  
(Choose TWO)

- A. Split cells
- B. Merge cells
- C. Adjust font face
- D. Delete row
- E. Adjust background color

Answer: C,E

---

**QUESTION 4:**

What is the default address for a local web server?

- A. 127.1.1.1
- B. 127.0.0.0
- C. 127.0.0.1

D. 127.0.0.10

Answer: C

---

**QUESTION 5:**

What area, in the Insert bar, is intended for customizing and organizing frequently used objects?

- A. Favorites
- B. Common
- C. Application
- D. Layout

Answer: A

---

**QUESTION 6:**

How is Dreamweaver configured to add multiple consecutive spaces within the output of a web page using the Spacebar?

- A. It is not possible to add multiple consecutive spaces using the Spacebar.
- B. Select the HTML Tab > Character pull down menu > Non Breaking Space.
- C. Select Preferences > General category. Check the box labeled Allow multiple consecutive spaces.
- D. Open the site definition window and select Allow multiple spaces from the Design Notes category.

Answer: C

---

**QUESTION 7:**

What does Dreamweaver do by default when dependent files are included while transferring files?

- A. checks whether files are newer on remote site
- B. transfers any included file, but does not create sub-folders
- C. prompts you for every file
- D. transfers any embedded graphic file or included file

Answer: D

---

**QUESTION 8:**

What happens when a template with three editable regions is applied to an existing page without an attached template?

- A. prompts what region to unlock and then places the content in that region
- B. prompts to assign the document body to one of the editable regions
- C. content of the page is placed within the largest editable region
- D. prompts to update the template

Answer: B

---

**QUESTION 9:**

An image is inserted in a page from a folder outside of the current site using the Image command. What option is set to automatically copy that image to a folder in the site without generating a warning message?

- A. Use General category of the Preferences dialog box and deselect the option to show a dialog when inserting objects.
- B. Define the default images folder in the Site Definition dialog box.
- C. Right-click (CTRL-click Mac) on the image in the Files panel and then choose Insert image without dialog from the context menu.
- D. Select the image in the Files panel and then click Put Files.

Answer: B

---

**QUESTION 10:**

What feature enables a developer to use a web page layout that was created in a graphic application as a blueprint for the actual web page development in Dreamweaver?

- A. Tracing Image
- B. Guide Layer
- C. Grid
- D. Image Placeholder

Answer: A

---

**QUESTION 11:**

What method is used to open linked documents within Dreamweaver on a local hard drive?

- A. Double-click the link.
- B. Select the link and select Modify > Open Linked Page.
- C. Select the link and select File > Open Linked Page.
- D. Press Ctrl (cmd-click Mac) and single-click the link.

Answer: B

---

**QUESTION 12:**

What is the target attribute of the link (<a>) tag used to specify? (Choose TWO)

- A. name of the file that is being linked to
- B. name of the anchor that is being linked to
- C. frame in which a linked page should open
- D. whether a linked page should open in a new browser window
- E. text/image that is to appear as a hypertext link

Answer: C,D

---

**QUESTION 13:**

Dreamweaver can display code that is inserted by the server using a server-side include. Why should a developer use this feature?

- A. way to create a server-side include in HTML
- B. makes sure the code is accessible
- C. helps test how the server-side include works on a local machine
- D. aids proper layout of the web page

Answer: D

---

**QUESTION 14:**

What properties can be set ONLY when a table cell is selected? (Choose TWO)

- A. Border Width
- B. Horizontal Alignment
- C. Cell Padding
- D. Vertical Alignment
- E. Cell Spacing

Answer: B,D

---

**QUESTION 15:**

How can changes to a template be applied to all attached pages?

- A. Modify > Templates > Apply Template to Pages
- B. Right-click (CTRL-click Mac) in an editable region and choose Template > Update Editable Regions
- C. Modify > Templates > Update Pages
- D. File > Save as Template

Answer: C

---

**QUESTION 16:**

A change is made and saved to a style in a linked CSS file. What must be done so that the HTML pages using the CSS show the change?

- A. open and close Dreamweaver
- B. nothing
- C. update the pages site-wide
- D. refresh the Site Cache

Answer: B

---

**QUESTION 17:**

How are guides created in Dreamweaver?

- A. drawn with the line tool
- B. automatically drawn along slice
- C. dragged from ruler
- D. added by viewing grid

Answer: C

---

**QUESTION 18:**

What features enable source management and communications tracking within a collaborative development environment? (Choose TWO)

- A. Design notes
- B. Snippets
- C. File panel
- D. Check-In/Check-Out
- E. Libraries

Answer: A,D

---

**QUESTION 19:**

What is NOT a valid attribute for the <table> tag?

- A. valign
- B. background
- C. width

D. align

Answer: A

---

**QUESTION 20:**

Where is the default images folder specified for a site?

- A. Site Definition dialog box, Basic tab
- B. Site Definition dialog box, Advanced tab
- C. Files panel
- D. Assets panel, Images category

Answer: B

---

**QUESTION 21:**

What feature can be used to insert small blocks of code that is updated later without manually editing each instance of the same piece of code?

- A. Templates
- B. Assets panel
- C. Snippets
- D. Library items

Answer: D

---

**QUESTION 22:**

What files are listed by the Link Checkers Orphaned Files report?

- A. broken links
- B. files not linked from other pages
- C. external links
- D. files saved outside the root folder

Answer: B

---

**QUESTION 23:**

What functionality does the Coding Toolbar provide in Code View? (Choose TWO)

- A. Code Hint Tools
- B. Create New Snippet
- C. Code Collapse
- D. Balance Braces

E. Inserting Functions

Answer: C,D

---

**QUESTION 24:**

What are patterns that define character combinations within the Find and Replace panel called?

- A. Search Parameters
- B. ECMAScript
- C. Special Characters
- D. Regular Expressions
- E. Keyboard Shortcuts

Answer: D

---

**QUESTION 25:**

What Visual Aid displays the margin, border, and padding of CSS elements?

- A. CSS Background Layout Background
- B. Layer Outline
- C. CSS Layout Outlines
- D. CSS Layout Box Mode

Answer: D

---

**QUESTION 26:**

What edits will make this HTML table correct?  
Exhibit:

```
1  <table cellspacing="2" cellpadding="2" border="0">
2
3  <tr>
4      <td width="50">&nbsp;</td>
5      <td width="50">&nbsp;</td>
6  </tr>
7  <tr>
8      <td colspan="2">&nbsp;</td>
9      <td>&nbsp;</td>
10 </tr>
11 <tr>
12     <td width="100">&nbsp;</td>
13 </tr>
14
15 </table>
```



- A. Move line #9 below line #12
- B. Set the Table Width to "100"
- C. Set the Table Data width in lines #8, #9, and #12 to "50"
- D. Remove the Table Data width from line #12

Answer: A

---

### QUESTION 27:

What change will make this style's .CSS file correct?

Exhibit:

```
1  <style>
2      BODY, TD {
3          background: navy;
4          color : white;
5          font-family : Arial, sans-serif;
6          font-size: 14px;
7          text-align: justify;
8      }
9  </style>
```

- A. Change "font-family" to "font" on Line #5
- B. Remove the <style> and </style> tags.
- C. Change the <style> tag to <jscript> and </style> to </jscript>.
- D. Change "text-align" to "text-position" on Line #7

Answer: B

---

### QUESTION 28:

From which Insert bar tabs can a table be inserted? (Choose TWO)

- A. Common
- B. Layout
- C. Text
- D. Forms
- E. HTML

Answer: A,B

---

### QUESTION 29:

When would an onBlur event occur?

- A. onBlur is not an event

- B. when selecting any object after selecting the one the onBlur event is attached
- C. when selecting any object other than the one the onBlur event is attached
- D. when an image is selected
- E. when a form field is selected

Answer: B

---

**QUESTION 30:**

What is true about image maps? (Choose TWO)

- A. cannot use an image map in a frameset
- B. cannot have more than 5 links within an image map
- C. can only have one image map on a single page
- D. can create image maps on both .gif and .jpg images
- E. can create alternate text for each link within an image map

Answer: D,E

---

**QUESTION 31:**

What is "align" in the following code known as?

`<div align="center">`

- A. element
- B. attribute
- C. value
- D. argument

Answer: B

---

**QUESTION 32:**

What code is used to change the background color of a page to white using JavaScript?

- A. `page.bgcolor = "#FFFFFF";`
- B. `document.changeBgColor("#FFFFFF");`
- C. `bgcolor = "#FFFFFF";`
- D. `document.bgColor = "#FFFFFF";`

Answer: D

---

**QUESTION 33:**

In CSS, what is the correct example of a custom class called myclass?

- A. .myclass
- B. \$myclass
- C. #myclass
- D. %myclass

Answer: A

---

**QUESTION 34:**

A page has an embedded style sheet that redefines H3 as Arial, red. The same page has a linked style sheet attached that defines H3 as Verdana, blue, and 16 pixels. How should text between H3 tags display on the page in a browser?

- A. Verdana, red, 16 pixels
- B. Arial, red, browser default font size
- C. Verdana, blue, 16 pixels
- D. Arial, red, 16 pixels

Answer: D

---

**QUESTION 35:**

What can Dreamweaver do when synchronizing files?

- A. delete a few FrontPage extensions remotely
- B. optionally delete remote files not present locally
- C. optionally delete local files not present remotely
- D. optionally delete orphaned files locally

Answer: B

---

**QUESTION 36:**

What happens when the dialog box asking to upload the dependent files of a web page is ignored?

- A. upload will not take effect until whether to upload dependent files or not is selected
- B. web page and dependent files will be uploaded within 60 seconds
- C. upload will be cancelled after 60 seconds
- D. prompts for each of the dependent files of the page after 60 seconds
- E. only the web page is uploaded within 60 seconds

Answer: E

---

**QUESTION 37:**

What is the correct workflow for XSL transformation in Dreamweaver?

- A. Create XML > Include XML into dynamic page > Server transforms XSL to RSS for viewing
- B. Create XML > Create XSL file using XML > Use XSL transformation in dynamic web page
- C. Create RSS > Generate dynamic page > Output XSL as XML
- D. Create RSS from dynamic page > Generate XSL > Output XML as web page

Answer: B

---

**QUESTION 38:**

What happens when the dialog box asking to upload the dependent files of a web page is ignored?

- A. only the web page is uploaded within 60 seconds
- B. upload will not take effect until whether to upload dependent files or not is selected
- C. upload will be cancelled after 60 seconds
- D. web page and dependent files will be uploaded within 60 seconds
- E. prompts for each of the dependent files of the page after 60 seconds

Answer: A

---

**QUESTION 39:**

Using an image editor, what is the common technique used to reduce the file size of a .gif image?

- A. use a web safe color table
- B. use a transparent background
- C. smooth out gradients in an image editor
- D. reduce the number of colors

Answer: D

---

**QUESTION 40:**

What behavior can be attached to a hyperlink to load new content into two different frames in a frameset?

- A. Swap Image
- B. Open Browser Window
- C. Change Behavior
- D. Go To URL

Answer: D

---

**QUESTION 41:**

What warning will be displayed when performing a Find and Replace operation on an entire site of files?

- A. Find and Replace will only work on unopened files with an .html or .htm extension.
- B. This operation cannot be undone in documents that are not currently open.
- C. Replacing text in an unopened file may cause certain extensions to no longer function correctly.
- D. Replace operation cannot be performed on files that are not currently open.

Answer: B

---

**QUESTION 42:**

What operation allows the user to change all areas of a document created from a template?

- A. start over and use library items instead
- B. make a separate template for the page
- C. make the body tag editable
- D. detach the page from the template

Answer: D

---

**QUESTION 43:**

How can a custom style be removed from a linked external style sheet?

- A. Delete it in the CSS panel.
- B. Create a new tag-based style for the same tag and overwrite the existing one.
- C. Detach the style sheet that contains the style.
- D. Select the paragraph text and choose No Style from the CSS Styles panel.

Answer: A

---

**QUESTION 44:**

Which method is used to open a new browser window?

- A. navigator.open()
- B. window.new()
- C. window.open()

D. document.new()

Answer: C

---

**QUESTION 45:**

How is it possible to simulate viewing pages at different screen resolutions in Dreamweaver?

- A. Change the window size at the bottom of the document window.
- B. Change the resolution of the operating system and then preview web pages.
- C. Go to Edit > Preferences > View and set your screen resolution.
- D. Right-click (CTRL-click Mac) on the document and select the Screen Resolution option.

Answer: A

---

**QUESTION 46:**

What is a valid JavaScript variable assignment?

- A. x = John Doe
- B. x = 5
- C. x >= 5
- D. x == y

Answer: B

---

**QUESTION 47:**

While working in Design view in Dreamweaver, two vertical guides are dragged onto the page. How is the exact distance between the two guides determined?

- A. Shift + Click both guides to select them both and the distance will automatically be shown
- B. Place your mouse pointer between both guides and press the Control key (Windows) or Command key (Macintosh)
- C. Place your mouse pointer between both guides, right-click, and choose Show Distance
- D. Choose View > Guides > Show Distance

Answer: B

---

**QUESTION 48:**

What is a feature of cloaking?

- A. makes files and folders invisible on the server
- B. allow users to make files hidden from site viewers
- C. prevents file types and folders from being uploaded
- D. prevents unauthorized persons from viewing certain site files

Answer: C

---

**QUESTION 49:**

While working in Design view in Dreamweaver, two vertical guides are dragged onto the page. How is the exact distance between the two guides determined?

- A. Place your mouse pointer between both guides and press the Control key (Windows) or Command key (Macintosh)
- B. Shift + Click both guides to select them both and the distance will automatically be shown
- C. Place your mouse pointer between both guides, right-click, and choose Show Distance
- D. Choose View > Guides > Show Distance

Answer: A

---

**QUESTION 50:**

What three styles does Dreamweaver allow the user to define when building CSS Style Sheets?

- A. Format Styles, HTML Styles, and Selection Styles
- B. Tag Styles, Format Styles, and Selection Styles
- C. HTML Styles, CSS Styles, and Inline Styles
- D. HTML Tag styles, Class Styles, and Selector Styles

Answer: D

---

**QUESTION 51:**

What is a feature of the coding toolbar?

- A. if nested comments, remove comment button only removes outer comment tag
- B. apply comment button can only insert HTML comment
- C. create unordered list from selected code
- D. ability to undock and move toolbar and customize button

Answer: A

---

**QUESTION 52:**

A page has an external style sheet attached that defines the H3 tag as Arial, 14 point, and the color red. The page also has an internal style that defines the H3 tag to use Verdana, 12 point with no color change. How does H3 text appear on the page?

- A. Verdana, 12 point, red
- B. Arial, 12 point, black
- C. Verdana, 12 point, black
- D. Arial, 14 point, red

Answer: A

---

**QUESTION 53:**

Several images were added to the website but do not show up in the Assets panel. The Refresh Site List button is clicked in the Assets panel, but the images still do not show up. What is the next step?

- A. Click the Insert button in the Assets panel.
- B. Make sure the directory containing the images is cloaked.
- C. Close the Assets panel and then re-open it.
- D. Select the Recreate the Site Cache command.

Answer: D

---

**QUESTION 54:**

A request for the URL:  
`http://www.mysite.com/resources/faq.html` results in a 404 server error. What could cause such an error?

- A. server cannot process the request because it is temporarily overloaded
- B. no `faq.html` file in the resources directory
- C. web server does not have read permission for the resources directory
- D. server took longer than expected to return the `faq.html` page and timed out

Answer: B

---

**QUESTION 55:**

What activities can be performed while getting and putting files using background file transfers? (Choose TWO)

- A. preview in live data view
- B. preview in Browser on a testing server
- C. generate site-wide reports
- D. edit external cascading style sheets



E. delete remote files or folders

Answer: C,D

---

**QUESTION 56:**

Why will a <div> styled with "position:relative" NOT appear in the "Layers Panel" in Dreamweaver?

- A. Dreamweaver only regards elements styled with position:absolute as "layers"
- B. position:relative is not a permitted style
- C. <div> style cannot be used this way
- D. as a block tag, a <div> cannot be affected by position:relative styles

Answer: A

---

**QUESTION 57:**

What are the most useful tips when using FTP without being able to access the remote site? (Choose TWO)

- A. Uninstall and reinstall Dreamweaver
- B. Check permissions on the server
- C. Enable Edit > Preferences > Sites > Compress files before putting
- D. Enable passive FTP
- E. Use Site > Synchronize

Answer: B,D

---

**QUESTION 58:**

What is used to apply a class style to selected text? (Choose TWO)

- A. Assets panel
- B. Style panel
- C. Property inspector
- D. CSS Styles panel
- E. Insert bar

Answer: C,D

---

**QUESTION 59:**

What is the correct workflow for XSL transformation in Dreamweaver?

- A. Create XML > Create XSL file using XML > Use XSL transformation in dynamic

web page

B. Create XML > Include XML into dynamic page > Server transforms XSL to RSS for viewing

C. Create RSS > Generate dynamic page > Output XSL as XML

D. Create RSS from dynamic page > Generate XSL > Output XML as web page

Answer: A

---

**QUESTION 60:**

What type of graphic is best for creating menu buttons in a web page?

A. .png

B. .gif

C. .eps

D. .fh11

Answer: B

---

**QUESTION 61:**

A Microsoft Word 2003 document contains headings and body text formatted with these default styles: Heading 1, Heading 2, Heading 3, and Normal; as well as individual words and phrases formatted as bold or italic. In order to preserve this formatting in HTML when pasted into Dreamweaver, what option should be selected in the Copy/Paste category of the Preferences dialog?

A. Text with Structure Plus Full Formatting

B. Text with Structure

C. Text Only

D. Text with Structure Plus Basic Formatting

Answer: A

---

**QUESTION 62:**

What are the most useful tips when using FTP without being able to access the remote site? (Choose TWO)

A. Enable passive FTP

B. Enable Edit > Preferences > Sites > Compress files before putting

C. Uninstall and reinstall Dreamweaver

D. Use Site > Synchronize

E. Check permissions on the server

Answer: A,E

**QUESTION 63:**

What is a feature of the coding toolbar?

- A. apply comment button can only insert HTML comment
- B. create unordered list from selected code
- C. ability to undock and move toolbar and customize button
- D. if nested comments, remove comment button only removes outer comment tag

Answer: D

---

**QUESTION 64:**

What functionality does the Coding Toolbar provide in Code View? (Choose TWO)

- A. Create New Snippet
- B. Balance Braces
- C. Code Hint Tools
- D. Code Collapse
- E. Inserting Functions

Answer: B,D

---

**QUESTION 65:**

What will NOT show up in the file list in the Files panel?

- A. XML files
- B. The \_notes folder
- C. Plain text (.txt) files
- D. Excel spreadsheets

Answer: B

---

**QUESTION 66:**

What is the most effective method for creating a link that opens a new Browser window without a Status bar?

- A. Open Browser Window behavior
- B. `_blank(statusbar="FALSE")`
- C. `_blank`
- D. Set Text of Status Bar behavior

Answer: A

---

**QUESTION 67:**

What does the regular expression \w allow a user to match when a pattern search is executed?

- A. any word that appears more then 10 times in the document
- B. the preceding character 0 or more times
- C. any alphanumeric character, including underscore; equivalent to [A-Za-z0-9\_]
- D. at least n, and at most m, occurrences of the preceding character

Answer: C

---

**QUESTION 68:**

What action reduces a page's download time?

- A. Use tables instead of CSS for page layout.
- B. Resize images using the height and width attributes of the <img> tag.
- C. Link, rather than embed, client-side JavaScript.
- D. Reduce the number of colors used in GIF images.

Answer: D

---

**QUESTION 69:**

Where is the Characters menu found?

- A. HTML Styles panel
- B. Property inspector
- C. Assets panel
- D. Insert > HTML > Special Characters

Answer: D

---

**QUESTION 70:**

What is the purpose of previewing files through a web server?

- A. determines the site URL
- B. provides full testing of local links
- C. enables debugging for JavaScript
- D. tests server-side includes and dynamic processing

Answer: D

**QUESTION 71:**

What is an example of a Site Root relative link?

- A. <http://www.macromedia.com/images/navbar/content.gif>
- B. </images/navbar/content.gif>
- C. <images/navbar/content.gif>
- D. <../images/navbar/content.gif>

Answer: B

---

**QUESTION 72:**

What is the purpose of the Frames panel?

- A. edit a frame's properties
- B. add, delete, or merge frames
- C. select a frame in the document enabling editing to its properties
- D. view and modify the HTML for the frameset

Answer: C

---

**QUESTION 73:**

What is true about documents that comply with WWC XML standards?

- A. XML documents cannot be rendered in web browsers.
- B. XML describes the physical formatting of the document.
- C. XML tags are used for conditional display of text and HTML tags are for text that should always be displayed.
- D. Document structure and physical formatting must be strictly separated.

Answer: D

---

**QUESTION 74:**

What set of Cascading Style Sheets (CSS) style rules cause hypertext links within a table data cell to appear bold, not underlined, and with a pale gray background when the user moves the mouse pointer over a link?

- A. `td a:hover {  
font-weight: bold;  
underline: none;  
background-color: #CCCCCC;  
}`
- B. `td a:hover {`

```
font-weight: bold;
underline: none;
color: #CCCCCC;
}
C. td a:hover {
font-weight: bold;
text-decoration: none;
background-color: #CCCCCC;
}
D. td, a:hover {
font-weight: bold;
text-decoration: none;
background-color: #CCCCCC;
}
```

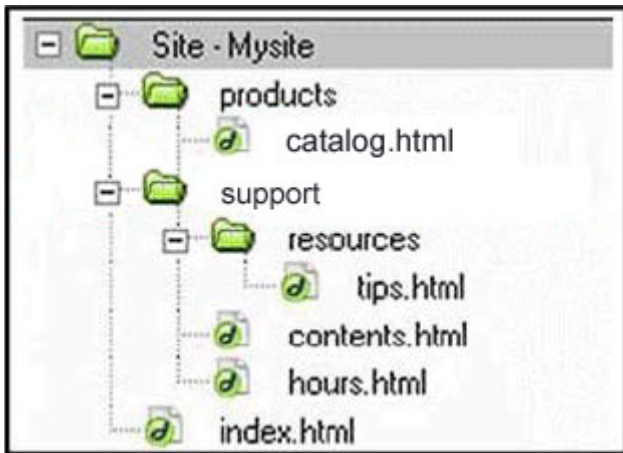
Answer: C

---

**QUESTION 75:**

Given the site pictured here, what is the document-relative link from the tips.html page to the catalog.html page?

Exhibit:



- A. products/catalog.html
- B. /products/catalog.html
- C. ../products/catalog.html
- D. ../../products/catalog.html

Answer: D

---

**QUESTION 76:**

What does the following statement do? `if(!myFlag)(x=y;)`

- A. sets x=y if myFlag is equal to x
- B. sets x=y if myFlag is true or 1
- C. sets x=y if myFlag is false or 0
- D. sets x=y if myFlag exists

Answer: C

---

**QUESTION 77:**

What built-in feature allows the web developer to isolate a business address into a single unit that can later be easily edited and automatically updated on every page?

- A. Library Item
- B. Placeholder
- C. Tracing Image
- D. Template

Answer: A

---

**QUESTION 78:**

What Dreamweaver feature can invoke client-side JavaScript code based on the actions of a user?

- A. Command
- B. Application Object
- C. Server Behavior
- D. Action
- E. Behavior

Answer: E

---

**QUESTION 79:**

What can the <head> section of a document contain? (Choose TWO)

- A. <meta> tags
- B. <body> tag
- C. version of HTML used
- D. style sheets
- E. everything that displays in a browser

Answer: A,D

---

**QUESTION 80:**

Where can Dreamweaver Design Notes be turned off if they will NOT be used in a web site?

- A. delete the \_notes directory in the site
- B. Design Notes command under the Modify menu
- C. Design Notes button on the Document toolbar
- D. Design Notes category in the Site Definition

Answer: D

---

**QUESTION 81:**

What is done first in order to display the graphical site map?

- A. Set the option add to site map in the Page Properties.
- B. Save a file named index.htm in the root folder.
- C. Add a navigation bar on each page.
- D. Define a home page.

Answer: D

---

**QUESTION 82:**

What file names will work reliably across Windows, UNIX, and Mac servers? (Choose TWO)

- A. index/1.html
- B. index1.html
- C. 1\_index.html
- D. index\_1.htm
- E. index 1.html

Answer: B,D

---

**QUESTION 83:**

What options are provided in the Table dialog box to make data tables more meaningful to web users with disabilities? (Choose THREE)

- A. Access Key
- B. Label
- C. TextVersion
- D. Header
- E. Caption
- F. Summary



Answer: D,E,F

---

**QUESTION 84:**

When setting the action of an HTML form to use the mailto command and sending the form data to an email address, what Enctype setting is necessary to present this data in a readable format in the body of the email?

- A. text
- B. text/plain
- C. plain
- D. "multipart/form-data"

Answer: B

---

**QUESTION 85:**

How is text rendered inside a <th> tag by most browsers by default? (Choose TWO)

- A. Aligned top
- B. Italicized
- C. Bold
- D. Centered
- E. Aligned left

Answer: C,D

---

**QUESTION 86:**

What elements are NOT stored in the Assets panel?

- A. reports
- B. colors
- C. URLs
- D. images

Answer: A

---

**QUESTION 87:**

A Flash source file (FLA) needs to be transferred to the web server, but it is being ignored when the site is synchronized. What is the best explanation?

- A. the user needs the latest version of the Macromedia Flash Player
- B. FLA needs to be set as a MIME type on the web server

- C. FLA files need the flash authoring software installed
- D. directory permissions need changing on the web server
- E. FLA files are cloaked in Dreamweaver

Answer: E

---

**QUESTION 88:**

What tag and attribute is NOT used to create the following table structure?

Exhibit:


- A. <td colspan="3">
- B. <td colspan="2">
- C. <td rowspan="3">
- D. <td rowspan="2">

Answer: C

---

**QUESTION 89:**

What text formatting can be applied from the Property inspector?

- A. underline
- B. font size
- C. definition list
- D. superscript

Answer: B

---

**QUESTION 90:**

In CSS, what is used as a prefix for ID Selectors?

- A. ,
- B. \$
- C. %
- D. #

Answer: D

---

**QUESTION 91:**

What will test to see if the values of x and y are the same in JavaScript?

- A. if (x = y)
- B. if (x EQ y)
- C. IF (x = y)
- D. if (x == y)

Answer: D

---

**QUESTION 92:**

What is an advantage of using the POST method rather than the GET method for an HTML form?

- A. Form data is not exposed to the user.
- B. POST method is more efficient.
- C. Only PERL scripts can work with the GET method to process forms data.
- D. No validation of form data is possible with the GET method.

Answer: A

---

**QUESTION 93:**

While in Design view, what methods may be used to attach a hyperlink to highlighted text? (Choose TWO)

- A. Property inspector > Browse for File
- B. Property inspector > Create Hyperlink
- C. Property inspector > Point to File
- D. Modify > Text > Hyperlink
- E. Code > HTML > Hyperlink

Answer: A,C

---

**QUESTION 94:**

Which symbols could be used to start a comment in JavaScript? (Choose TWO)

- A. //
- B. /\*
- C. \*/
- D. #
- E. {

Answer: A,B

---

**QUESTION 95:**

If a form requires a constant value for a form field each time the form is submitted, what type of field is used to store the data?

- A. Concealed
- B. Standard
- C. Fixedvalue
- D. Hidden

Answer: D

---

**QUESTION 96:**

What is the purpose of placing an image at the end of an HTML document and setting height and width attributes to a value of 1?

- A. Define table borders.
- B. Create a thumbnail image.
- C. Create an image map.
- D. Cache the image.

Answer: D

---

**QUESTION 97:**

What CSS formatting options must be previewed in the browser to see them properly rendered?

- A. Letter Spacing
- B. A:hover
- C. Line Height
- D. A:link

Answer: B

---

**QUESTION 98:**

What is the primary purpose of a staging server?

- A. Test a site in an environment closely resembling the production environment.
- B. Design and story board a site.
- C. Test server-side includes and image maps, which cannot be tested using a single machine.
- D. Test a site's ability to withstand DOS (denial of service) attacks.

Answer: A

---

**QUESTION 99:**

What Visual Aid displays the margin, border, and padding of CSS elements?

- A. CSS Background Layout Background
- B. Layer Outline
- C. CSS Layout Outlines
- D. CSS Layout Box Mode

Answer: D

---

**QUESTION 100:**

When Dreamweaver form validation behavior is attached to a specific form element other than the Submit button, when will the behavior be triggered by default?

- A. when the form is reset
- B. when the user de-selects the form control to which the behavior is attached
- C. when the user selects the form control to which the behavior is attached
- D. when the form is submitted

Answer: B

---

**QUESTION 101:**

Why might a library item NOT function correctly if the Copy to Site feature in the Assets panel is used to copy the library item to a new site? (Choose TWO)

- A. Template pages cannot be updated using library items.
- B. The library item contains links to images that have not been copied to the new site.
- C. <body> tag of the library item might conflict with the properties already set for the page.
- D. Linked pages defined in the library item may not be valid in the new site.
- E. Must first select the Modify > Library > Update command to update the current site with the new library item.

Answer: B,D

---

**QUESTION 102:**

Why will a <div> styled with "position:relative" NOT appear in the "Layers Panel" in Dreamweaver?

- A. position:relative is not a permitted style
- B. <div> style cannot be used this way
- C. as a block tag, a <div> cannot be affected by position:relative styles
- D. Dreamweaver only regards elements styled with position:absolute as "layers"

Answer: D

---

**QUESTION 103:**

What code is added to a web page when Set Color Scheme is invoked from the Commands menu?

- A. 

```
a {  
font-family: Verdana, Arial, Helvetica, sans-serif;  
font-size: 11px;  
color: #07387A;  
text-decoration: none;  
}  
a:hover {  
color: #990000;  
}
```
- B. `<script language="JavaScript" type="text/JavaScript">`
- C. `<link href="styles.css" rel="stylesheet" type="text/css">`
- D. `<body bgcolor="#FF9900" text="#333333" link="#FFFF00" vlink="#FFCC66" alink="#666600">`

Answer: D

---

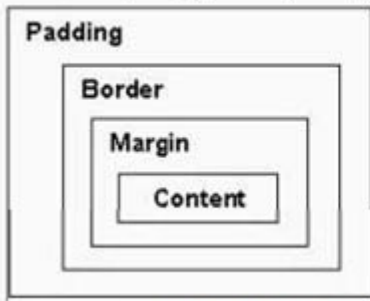
**QUESTION 104:**

CORRECT TEXT

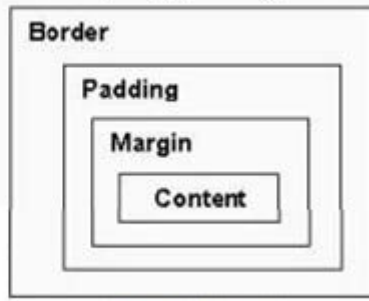
What is the correct order of the CSS box properties surrounding a Content area from internal to external?

Exhibit:

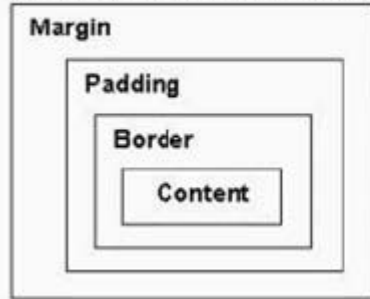
A. Content, Margin, Border, Padding



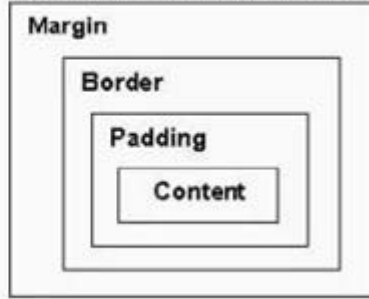
B. Content, Margin, Padding, Border



C. Content, Border, Padding, Margin



D. Content, Padding, Border, Margin



Answer: D

---

#### **QUESTION 105:**

How can the same background color be added to several nonadjacent cells in a table?

- A. Choose Edit > Table > Select Nonadjacent from the menu, click in each of the cells to edit, and set the background color in the Property inspector.
- B. Select the table and open the Table panel. In the Table panel, choose the cells to edit and select the desired color from the Background Color menu.
- C. Right-click (CTRL-click Mac) on the table and choose Table > Edit Cells from the context menu. When the Table inspector opens, select the cells to edit and choose the background color from the Color panel.
- D. Hold the Ctrl key (CMD-click Mac) down and click in each cell to select. Then set the background color in the Property inspector.

Answer: D

---

#### **QUESTION 106:**

What computer languages are used most to write Dreamweaver extensions?

- A. HTML and JavaScript
- B. HTML and XML
- C. C and XML
- D. C and JavaScript

Answer: A

---

**QUESTION 107:**

When creating an image map, where does Dreamweaver put the image map code by default?

- A. in the JavaScript code
- B. between the <head> and </head> tags
- C. between <body> and </body> tags
- D. inside a <meta> tag

Answer: C

---

**QUESTION 108:**

What is an example of a site root relative path?

- A. ../resources/books.html
- B. file:///Macintosh HD/resources/books.html
- C. resources/books.html
- D. /resources/books.html

Answer: D

---

**QUESTION 109:**

How are guides created in Dreamweaver?

- A. automatically drawn along slice
- B. dragged from ruler
- C. added by viewing grid
- D. drawn with the line tool

Answer: B

---

**QUESTION 110:**

What functions use the site cache to speed up access to updated site information?  
(Choose TWO)

- A. displaying the Site Map
- B. managing links to external sites
- C. managing links to documents within the site
- D. verifying connections to ODBC data sources



E. managing the Check-In/Check-Out system

Answer: A,C

---

**QUESTION 111:**

How are case-sensitive links checked in Dreamweaver?

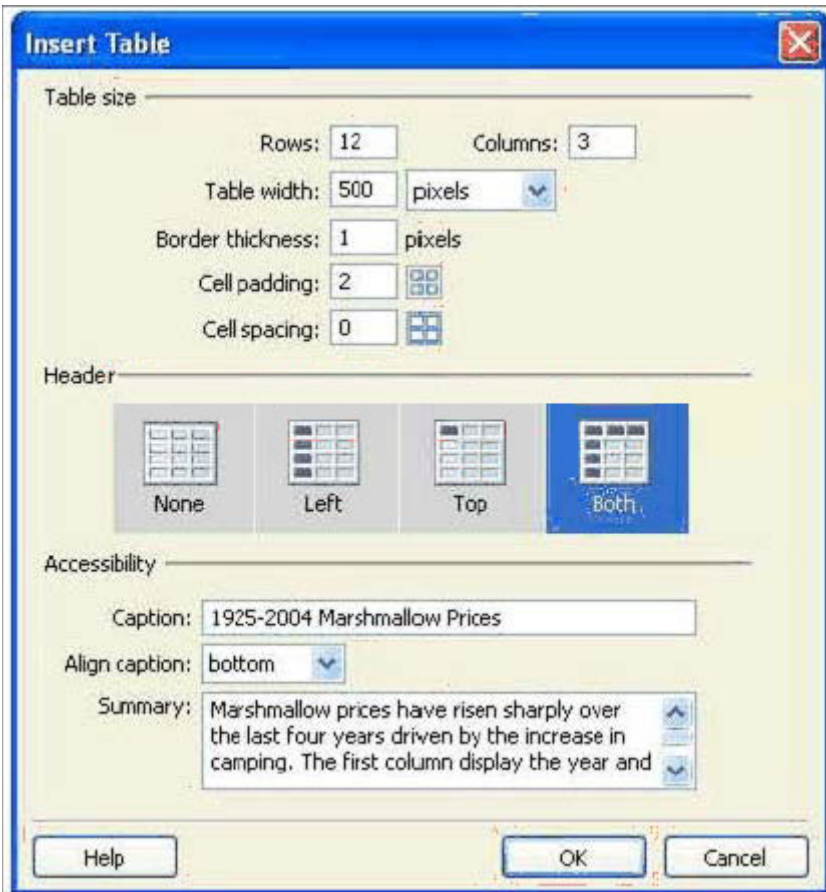
- A. Dreamweaver automatically detects case-sensitive links
- B. when viewing the site definition for the site, go to the Advanced Tab and check Case-Sensitive Links in the Local Info category
- C. from the Link Checker tab within the Results panel, choose Settings > Case-Sensitive Links
- D. when viewing the site definition for the site, go to the Advanced Tab and choose UNIX from the Server Type drop down menu in the Remote Info category

Answer: B

---

**QUESTION 112:**

As shown in the exhibit, what does adding the Summary attribute to a table cause?  
Exhibit:



- A. available information to non-visual browsers such as text to speech converters for the visually impaired
  - B. saving to the user's bookmarks or favorites list
  - C. client-side cookie
  - D. summary information appears in the top cell so that viewers understand the table content
- C.summary information appears in the top cell so that viewers understand the table content

Answer: A

---

**QUESTION 113:**

Tag libraries allow a user to import tags from what type of file?

- A. .xml
- B. .cfm
- C. .php
- D. .txt

Answer: A

---

**QUESTION 114:**

A Microsoft Word 2003 document contains headings and body text formatted with these default styles: Heading 1, Heading 2, Heading 3, and Normal; as well as individual words and phrases formatted as bold or italic. In order to preserve this formatting in HTML when pasted into Dreamweaver, what option should be selected in the Copy/Paste category of the Preferences dialog?

- A. Text Only
- B. Text with Structure Plus Basic Formatting
- C. Text with Structure
- D. Text with Structure Plus Full Formatting

Answer: D

---

**QUESTION 115:**

What CSS positioning property value is used to position layers when using the Draw Layer tool or choosing Insert > Layer?

- A. fixed
- B. relative
- C. static
- D. absolute

Answer: D

---

**QUESTION 116:**

What must separate each item in a list of terms and definitions before applying a Definition List?

- A. paragraph break
- B. line break
- C. tab delimiter
- D. indent

Answer: A

---

**QUESTION 117:**

What is the order of precedence (highest to lowest), when using all three types of Cascading Style Sheets (CSS) styles in a document?

- A. embedded, inline, linked
- B. linked, inline, embedded
- C. linked, embedded, inline
- D. inline, embedded, linked

Answer: D

---

**QUESTION 118:**

What are the four types of template objects?

- A. repeating, editable, editable tag attribute, custom
- B. optional, custom, editable, repeating
- C. editable tag attribute, optional, repeating, editable
- D. editable parameter, editable tag attribute, editable, repeating

Answer: C

---

**QUESTION 119:**

What activities can be performed while getting and putting files using background file transfers? (Choose TWO)

- A. edit external cascading style sheets
- B. generate site-wide reports
- C. delete remote files or folders

- D. preview in live data view
- E. preview in Browser on a testing server

Answer: A,B

---

**QUESTION 120:**

Which Cascading Style Sheets (CSS) properties are used to specify the horizontal and vertical position of an element in relation to its parent element?

- A. Top, Right
- B. Width, Top
- C. Top, Left
- D. Height, Width

Answer: C

---

**QUESTION 121:**

What is NOT a function that the tag selector can perform?

- A. editing
- B. selecting
- C. removing
- D. duplicating

Answer: D

---

**QUESTION 122:**

What is done to make an existing HTML document XHTML compliant?

- A. Use the File > Convert > XHTML command.
- B. Choose Edit > Preferences and select the Code Format category and check the "Make Document XHTML Compliant" checkbox.
- C. Use the Modify > Convert > XHTML command.
- D. Check an XHTML option from the Document Type (DTD) popup menu in the New Document dialog.

Answer: A

---

**QUESTION 123:**

Where can a list of favorite links be saved?

- A. Assets panel

- B. Site Definition
- C. Links panel
- D. Site Cache

Answer: A

---

**QUESTION 124:**

What option is NOT available in the images category of the Assets panel?

- A. Set alt text for image
- B. Copy image to another site
- C. Edit image
- D. Insert image on page
- E. Add image to favorites

Answer: A

---

**QUESTION 125:**

What is the purpose of the Window Size feature?

- A. resizes a monitors screen area to a fixed size
- B. adjusts the content of a document to a fixed size
- C. resizes document window to view page for different monitor sizes
- D. controls the size of the browser window on the visitor's machine

Answer: C

---

**QUESTION 126:**

When creating a new site that is similar to another site already managed by Dreamweaver, what feature of site management allows ease of making a copy of the original site?

- A. Clone
- B. Copy to New Site
- C. Export
- D. Duplicate

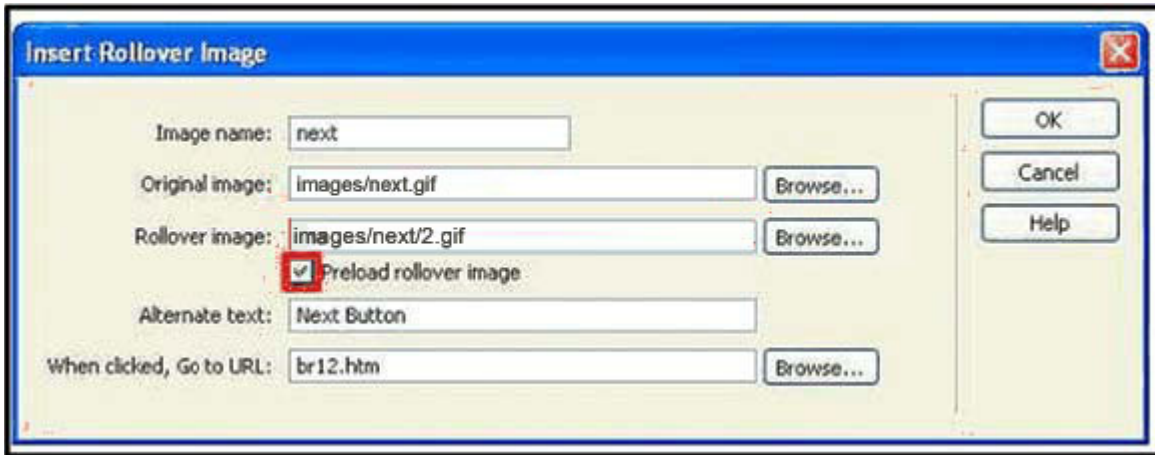
Answer: D

---

**QUESTION 127:**

When the Preload rollover image check box is checked (as shown above), the Preload Images behavior is added to which tag?

Exhibit:



- A. <img>
- B. <a>
- C. <head>
- D. <body>

Answer: D

---

#### QUESTION 128:

The current site requires an asset that is located in another site. What is the most efficient way to access and use that asset?

- A. Open the other site containing the needed asset and from its Assets panel, drag the asset onto the open page in the present site.
- B. Locate the asset in the other site, right-click (CTRL-click Mac) the asset, choose Copy to Site, then select the new site and click OK.
- C. The user is not able to use an asset from one site in another site.
- D. Locate the asset and copy it from the other site. Paste the asset into the desired page of the current site.

Answer: B

---

#### QUESTION 129:

Given the following code, what occurs in a browser that supports Cascading Style Sheets (CSS)?

```
<html>
<head>
<title>Shelob's Lair</title>
<meta http-equiv="Content-Type" content="text/html; charset=iso-8859-1">
<link href="A.css" rel="stylesheet" type="text/css">
<link href="B.css" rel="stylesheet" type="text/css">
```

</head>

- A. conflicting styles in B.css overrides those in A.css
- B. A.css overrides B.css
- C. conflicting styles in A.css overrides those in B.css
- D. B.css completely overrides A.css

Answer: A

---

**QUESTION 130:**

What is a property of an Image Placeholder?

- A. visibility
- B. z-index
- C. name
- D. location

Answer: C