



Exam : HP0-382

Title : Servicing HP Mid-Range Integrity Servers

Ver : 03-04-2009

**QUESTION 1:**

Which conditions prevent the manageability firmware from applying 48 V DC power to an rx8620 server? Select 2.

- A. insufficient number of CPU fans
- B. insufficient number of I/O fans
- C. the PC command issued to power down the cabinet
- D. ambient temperature in an OVERTEMP LOW condition
- E. insufficient number of main fans

Answer: B,E

---

**QUESTION 2:**

Which EFI command shows the available filesystems and block devices?

- A. map-r
- B. reconnect-r
- C. drivers-b boot
- D. drvcfg-s [driver] [controller]

Answer: A

---

**QUESTION 3:**

On an rx7620 server running HP\_UX, you just added a supported I/O card. Using "ioscan-fn" you receive the following message:  
unknown -1 0/4/1/0/0/0/0/0 UNCLAIMED UNKNOWN PCI RAID (101e1960)  
What does the "UNCLAIMED UNKNOWN" mean?

- A. The card should be configured first using "sautil."
- B. The appropriate driver is not installed in the kernel.
- C. No valid file system is configured on the connected disks.
- D. NO disks are connected to the RAID controller, so no more information can be displayed.

Answer: B

---

**QUESTION 4:**

What is the purpose of the EFI driver for the Host Bus Adapter (HBA)?

- A. to boot to EFI shell
- B. only used for diagnostic

- C. boot support for an OS.
- D. not used on Itanium systems.

Answer: C

---

**QUESTION 5:**

Which error logs can be accessed through the MP on an rx7620 server?Select 2.

- A. Firmware Log
- B. System Event Log
- C. Live Performance Log
- D. Kernel Debugging Log
- E. Forward Progress Log

Answer: B,E

---

**QUESTION 6:**

Using Linux, how do you check the amount of installed memory?

- A. Run the cstm command.
- B. Run the lspci command.
- C. View the /proc directory.
- D. Run the meminfo command.

Answer: C

---

**QUESTION 7:**

What is feature of the nvrboot.efi utility?

- A. backup boot disk information.
- B. save boot option configuration.
- C. copy an NVRAM command
- D. install new utilities

Answer: B

---

**QUESTION 8:**

HP OpenView GlancePlus is available for which operating system or systems?

- A. Linux only
- B. HP-UX only
- C. Windows only

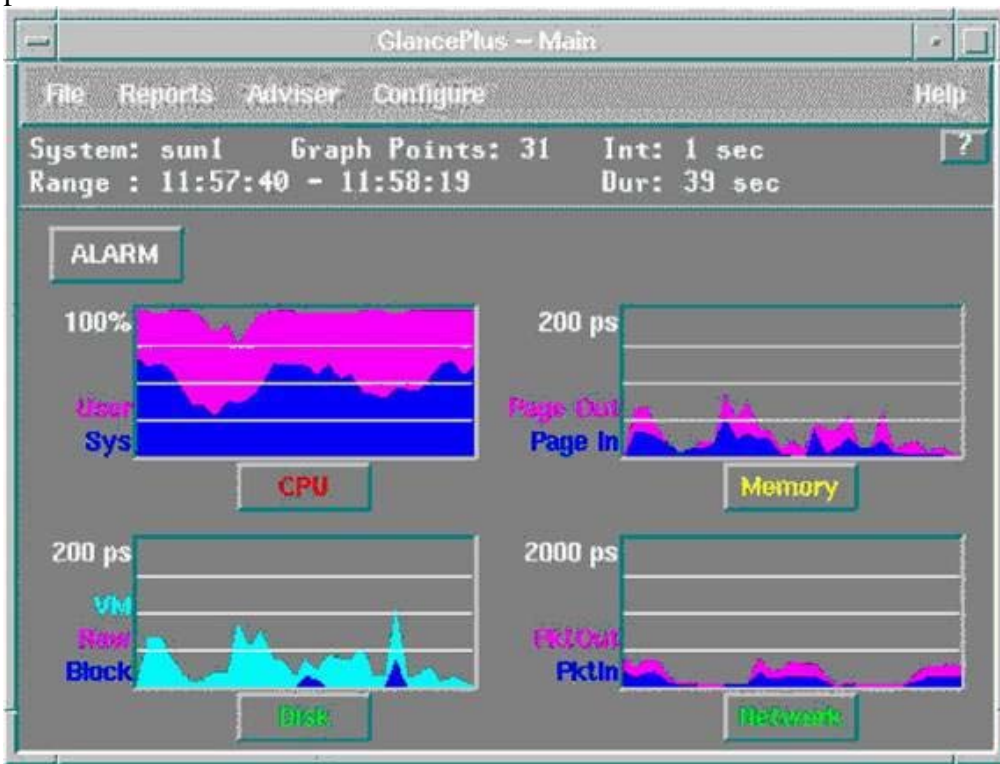
D. HP-UX and Linux

Answer: D

---

**QUESTION 9:**

Certkiller .com's system has a performance issue. Which resource in the exhibit has poor performance?



- A. CPU
- B. memory
- C. disk
- D. networking
- E. disk

Answer: A

---

**QUESTION 10:**

Which tools belong to the HP OpenView Storage Area Manager Suite? Select 3.

- A. Storage Allocator
- B. Storage Media Operations
- C. Storage Builder
- D. Storage Virtual Replicator
- E. Storage Node Manager

F. Storage Mirroring

Answer: A,C,E

---

**QUESTION 11:**

Which path below corresponds to the following ACPI path from the EFI device mapping table?

Acpi(HWP0002,0)/Pci(3/0)/Scsi(Pun6,Lun0)/HD(Part1,SigCC245042-3d87-11D)

- A. 0/0/0/3/6.0.0
- B. 0/0/0/3/0.6.0
- c. 0/0/3/0/0.6.0
- D. 0/2/0/3/0.6.0

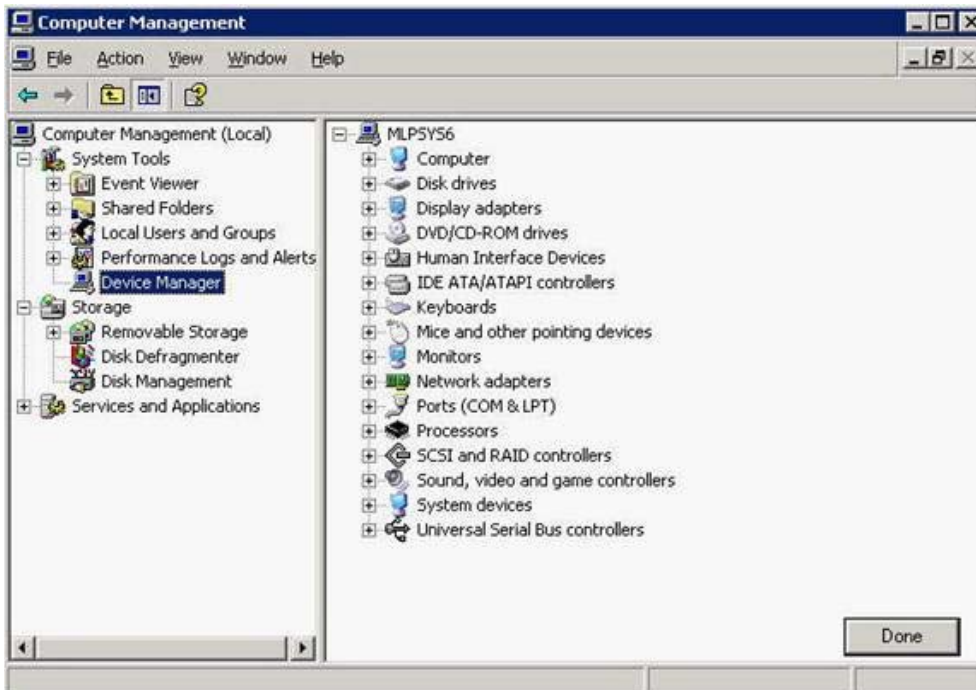
Answer: B

---

**QUESTION 12:**

**HOTSPOT**

Exhibit:



Click in the area of the graphic where you would look to find the PCI hardware path information for the PCI-to PCI-X bridge on the LAN/SCSI board of an rx7620 server.

Answer:



---

**QUESTION 13:**

Which command displays a list of devices and their system paths on an rx7620 server running HP-UX?

- A. show device
- B. ioscan
- c. scanpci
- D. list devices

Answer: B

---

**QUESTION 14:**

The following HP-UX hardware path is from an rx8620 system with an attached Server Expansion Unit (SEU)?

3/0/6/1/0

Where is the device associated with this path located?

- A. Where is the device associated with this path located?
- B. PCI-x slot in the SEU
- C. Core I/O in the rx8620 enclosure
- D. PCI-X slot in the rx8620 enclosure

Answer: B

**QUESTION 15:**

Exhibit:

In the path shown for HP-UX, What does the highlighted character represent?

0/0/8/1/0.0.0

- A. the PCI ID number
- B. the PCI function number
- C. the SCI physical unit number
- D. the SCSI logical unit number

Answer: C

---

**QUESTION 16:**

Which SDA command shows a list of PCI devices and the associated hardware path values on an rx7620 server running OpenVMS?

- A. CLUE CONFIG
- B. SHOW DEVICE /PCI
- C. CLUE SYSTEM
- D. SHOW RESOURCES

Answer: A

---

**QUESTION 17:**

On an HP Integrity server running Linux, you execute the lspci command and receive the following:

40:01.0 Fibre Channel: QLogic Corp. QLA2312 Fibre Channel Adapter (rev 03)

40:01.1 Fibre Channel: QLogic Corp. QLA2312 Fibre Channel Adapter (rev 03)

How do you interpret this? Select 2.

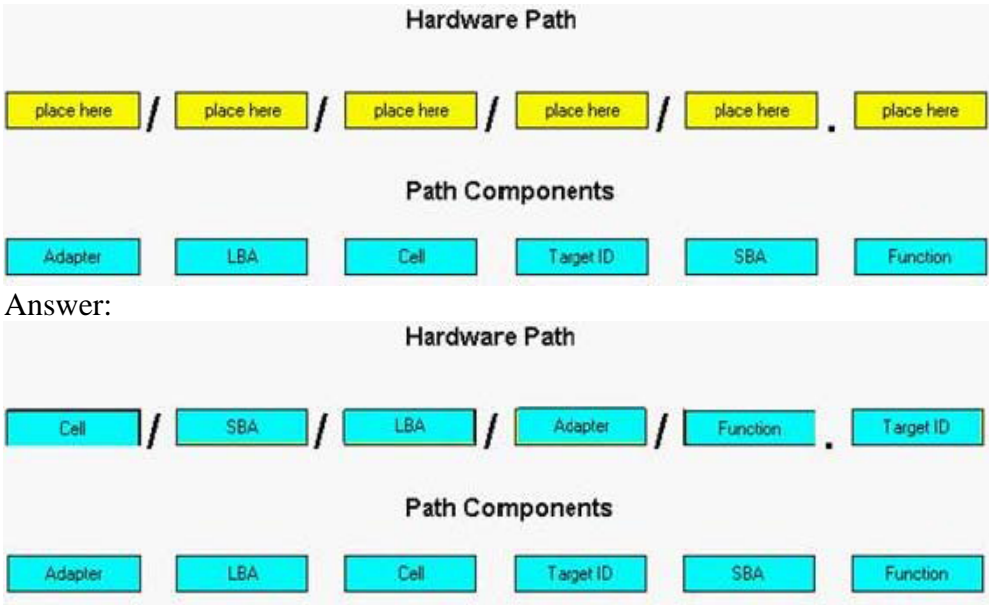
- A. There are two separate Fibre Channel PCI cards installed.
- B. There is one Fibre Channel PCI card installed with two ports.
- C. the card(s) are installed in a PCI-slot connected to rope 2.
- D. The card(s) are installed in a PCI-slot connected to rope 4.

Answer: B,C

---

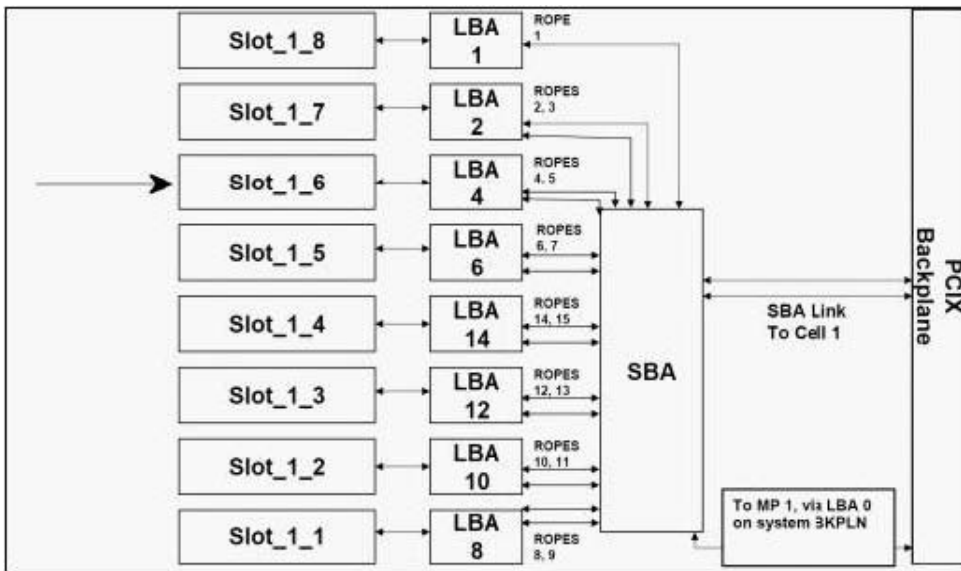
**QUESTION 18:**

DRAG DROP



**QUESTION 19:**

Exhibit:



What is the path of the PCI-X slot identified by the arrow in the block diagram shown?

- A. 1/0/6/1/0
- B. 1/0/4/0/1
- C. 1/0/4/1/0
- D. 1/0/6/0/1

Answer: C

**QUESTION 20:**

Exhibit:

1/0/1/1/0/4

In the hardware path shown for HP-UX, which device is highlighted?

- A. cell
- B. SBA
- C. target device
- D. PCI to PCI bridge device

Answer: D

---

**QUESTION 21:**

What is the OpenVMS command to get an I/O device list on HP Integrity server?

- A. ioscan
- B. scanpci
- C. scan device
- D. show deviceD.show device

Answer: D

---

**QUESTION 22:**

On an HP Integrity rx8620 server, which statement is correct for "cell-local memory" (CLM)?

- A. You should always use 100% CLM when doing a Windows installation.
- B. You can change from CLM to "Interleaved memory " by changing kernel parameters.
- C. CLM is a feature of the HP-UX Virtual Partitions software and can be created with "vparcreate-CLM:100:0:0....."
- D. To set up CLM, you have to install at least two echelons (four DIMMs) in special slots on the cell board (slot CLM0A-CLM0C and CLM0D).

Answer: A

---

**QUESTION 23:**

Which statements are true regarding memory configurations for the rx7620 server? Select 2.

- A. A minimum of two DIMMs are required per cell.
- B. A minimum of four DIMMs are required per cell.
- C. DIMM additions must be in sets of four per cell.
- D. For a 4-cell system, the maximum quantity of DIMMs is 64

Answer: A,D

---

**QUESTION 24:**

What is "MX2"?

- A. a one-socket, dual processor module for Integrity servers
- B. the public code name of the next generation Itanium 3 CPUs from Intel
- C. an HP PCI-e RAID controller with Fibre Channel Connections and support for Up to 2 TB
- D. a part of the memory subsystem of the HP sx1000 chipset that acts as a memory multiplexer to increase the memory bandwidth

Answer: A

---

**QUESTION 25:**

What are key features of the rx7620 and rx8620 memory subsystems? Select 2.

- A. chip spare chip kill
- B. parity protection on the data lines
- C. parity protection on the address and control lines
- D. DIMMs can be transferred from rp5400 system
- E. address ECC correction is generated on the DIMMs.

Answer: A,C

---

**QUESTION 26:**

Which statement is true regarding memory on the rx7620 server?

- A. DIMMs are only supported in sets of four.
- B. Memory DIMMs from the rp7410 are not compatible.
- C. You can use the same DIMMs as in the earlier rp7410 systems.
- D. The DIMMs must have a high voltage. TTL interface due to their speed.

Answer: C

---

**QUESTION 27:**

You want to add cells and memory to new HP Integrity rx8620 server. Which configuration rule should be applied for best memory performance and availability?

- A. Memory DIMMs should be installed eight (four echelons) per cell.
- B. In a 1-cell hard partition, cell-local memory should be configured as 0%

- C. a 2-cell hard partition with 4GB installed has greater performance than a 1-cell hard partition with 4GB installed.
- D. Each cell in a hard partition should have the same capacity (Size)and the same location (population) of DIMMs.

Answer: D

---

**QUESTION 28:**

Which component generates ECC for memory data lines on the rx7620?

- A. DIMM
- B. processor 0
- C. cell controller chip (CC)
- D. crossbar chip (XBC)

Answer: C

---

**QUESTION 29:**

On a fully loaded rx8620 server without power redundancy,which power inlets should be connected?

- A. A0
- B. B0
- C. A0 and A1
- D. A0 and B0

Answer: C

---

**QUESTION 30:**

Certkiller .com bought an rx7620 server with two cells installed.What is the minimum number of echelons that need to be installed on each cell?

- A. one on cell 0 and one on cell 1
- B. two on cell 0 and one on cell 1
- C. two on cell 0 and two on cell 1
- D. one on cell 0 and two on cell 1

Answer: A

---

**QUESTION 31:**

An rx8620 server is configured for two hard partitions. How many MP/core I/O boards are required?

- A. 0
- B. 1
- C. 2
- D. 1 or 2

Answer: C

---

**QUESTION 32:**

How many hard partitions can be installed on an rx8620 server with a Server Expansion Unit (SEU)?

- A. 1
- B. 2
- C. 3
- D. 4

Answer: D

---

**QUESTION 33:**

What is the correct method to update the system firmware on an rx8620 server?

- A. MP commands
- B. EFI commands
- C. tools on the SMS
- D. firmware patches via the OS

Answer: A

---

**QUESTION 34:**

Which connections are required between an SEU and the rx8620 server? Select 2.

- A. CLK cable
- B. 48 V cable
- C. FLEX cable
- D. SBA/REO cable
- E. I/O manageability link cable

Answer: D,E

---

**QUESTION 35:**

Which computer room temperature is recommended for an rx7620 server?

- A. 0 C to +15 C (32 F to 59 F)
- B. +15 C to +30 C (59 F to 86 F)
- C. +20 C to +25 C (68 F to 77 F)
- D. +30 C to +40 C (86 F to 104 F)

Answer: C

---

**QUESTION 36:**

Certkiller .com needs to install one new cell one an rx8620 server with three hard partitions.What is correct way to install it?

- A. Shutdown the cabinet and then plug in the new cell.
- B. Shutdown all partition and then plug in the new cell.
- C. Plug in the new cell and then configure the hard partition.
- D. Configure a new hard partition and then plug in the new cell.

Answer: C

---

**QUESTION 37:**

Which command is used on the MP to check the system firmware?

- A. sf
- B. df
- C. sysrev
- D. firmrev

Answer: C

---

**QUESTION 38:**

On HP-UX,what is the default directory in which the system memory dump is saved?

- A. /var/crash
- B. /var/adm/dump
- C. /var/dump
- D. /var/adm/crash

Answer: D

---

**QUESTION 39:**

Which common offline diagnostic tool is the same for all supported operating systems?

- A. ODE
- B. ISEE
- C. eSMG
- D. MSTM
- E. Smart Setup CD

Answer: A

---

**QUESTION 40:**

The internal DVD at path 1/0/0/2/1.2.0 failed on rx8620 server with multiple partitions and needs to be replaced. What is the first step in the replacement procedure?

- A. replace the drive; it is a hotplug device
- B. shut down and power off the partition with Cell 0
- C. shut down and power off the partition with Cell 1
- D. shut down all partitions and power off the cabinet

Answer: C

---

**QUESTION 41:**

Exhibit:

```
10210 PM 0 *7 e4800af300e00023 00ffffffff01ff44 BPS_UNDERVOLTAGE
10210 04/27/2005 17:25:28
10209 MP 0 2 4480113d00e00021 00ffffffffffff41 AC_ADDED_A0
10209 04/27/2005 17:25:28
10208 MP 0 *3 6480114100e0001f 00ffffffffffff41 AC_DELETED_A0
10208 04/27/2005 16:47:02
10207 MP 0 2 4480114500e0001d 00ffffffffffff41 AC_BROWNOUT_A0
```

What type of situation occurred on the rx7620 server that is shown the exhibit?

- A. MP logged some non-critical information.
- B. BPS was removed from the configuration.
- C. The server was rebooted by the administrator.
- D. There was a connection problem on one power input.

Answer: D

---

**QUESTION 42:**

Which actions are required to identify the root cause of the power fault documented in the exhibit? Select 2.

## HP0-382

```
23468 PDHC 0,1 2 54800c3906e00bd1 00000000000d000c CELL_POWER_OFF
23468 03/14/2004 10:41:46
23469 PDHC 0,1 *5 b4800b5706e00bd3 00000000000e000c CELL_POWER_FAULT
23469 03/14/2004 10:41:47
23470 PDHC 0,1 2 56800b9206e00bd5 0000000055200001 CELL_POWER_FAULT_INFO
23470 03/14/2004 10:41:47
23471 SFW 0,3,0*7 eb00009830e00bd7 01000000405436ec MC_INITIATED
23471 03/14/2004 10:41:48
23472 SFW 0,3,6*7 eb00009836e00bd8 01000000405436ec MC_INITIATED
23472 03/14/2004 10:41:48
```

- A. Reset the partition and boot up the OS.
- B. Collect MCA data and run MCA analyzer.
- C. Run the MP ps command on the reported entity.
- D. Replace the PDHC controller of the reported cell board.
- E. Replace the reported cell board and restart the partition.
- F. Decode the failing FRU out of the CELL\_POWER\_FAULT\_INFO

Answer: C,F

---

### QUESTION 43:

The Bulk Power Supply on slot 0 (BPS 0) on an rx8620 server fails. What is the recommended replacement procedure?

- A. Remove power cables A0 and B0 then replace the BPS on slot 0.
- B. BPSs are hot-swappable, so just replace the BPS on slot 0.
- C. Shut down all partition, power off cabinet and then replace the BPS on slot 0.
- D. Shut down the cell connected to the BPS on slot 0 and then replace the BPS.

Answer: B

---

### QUESTION 44:

Where is the UUID information stored on an rx7620 server? Select 2.

- A. cell board
- B. frontpanel
- C. PCI backplane
- D. system backplane
- E. Management Processor

Answer: A,E

---

### QUESTION 45:

Which tool can be used on Windows to decode the MP Event Log?

- A. sview

- B. ipmifpl
- C. mpview
- D. fpldecode

Answer: A

---

**QUESTION 46:**

On an rx8620 server with multiple partitions, one CPU has failed. Which action is necessary to fix the situation?

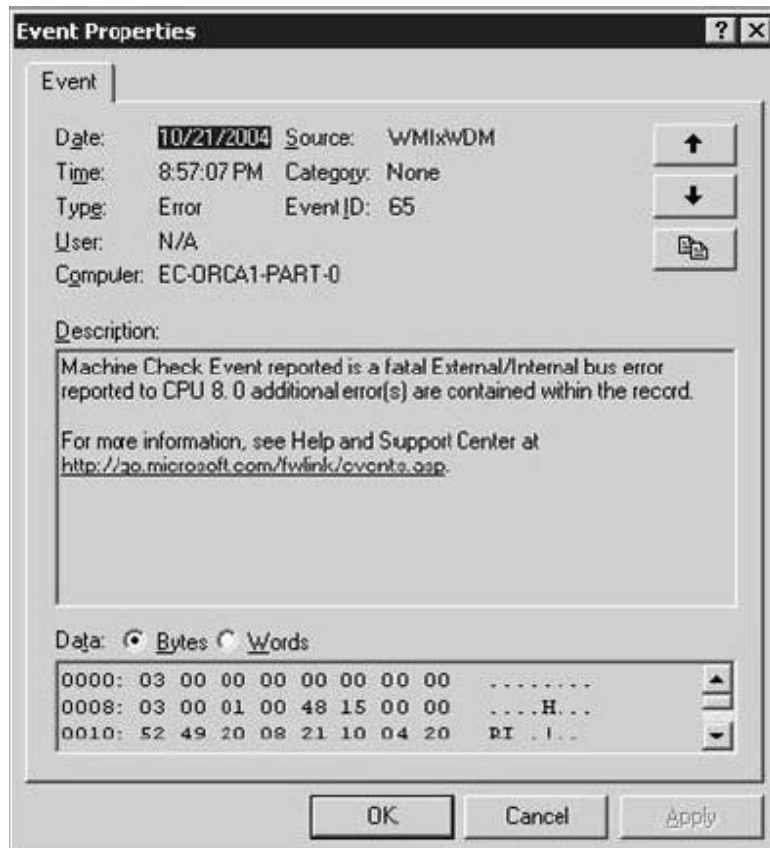
- A. Power off cabinet and replace the cell.
- B. Remap the partition configuration and replace the cell.
- C. Shut down all partitions, switch off the cell and replace it.
- D. Shut down the partitions, switch off the cell and replace it.

Answer: D

---

**QUESTION 47:**

Exhibit:



Which tool helps to diagnose the error shown in the exhibit?

- A. MCPO (Machine Check Analyzer)
- B. JET (Just Exploration Tool)
- C. WDIAG (Windows Diagnostics)
- D. CPUDIAG (CPU Diagnostics)

Answer: A

---

**QUESTION 48:**

Exhibit:

```
Cell Controller (PDHC) status. Cell 1
FW Revision : 3.006 built FRI AUG 15 12:01:54 2003
MICE Revision : 1.0

PDHC state      : 0x3b (err bib SMG CCO cci I2C PWR)
Attention Led is on

Power Status : 0x7c (12VSTBY rdy EN PWR vflt tflt fanflt)

LED State      : 0x0e (BIB SMG I2C heartbeat)

IO Connection Status : 0x01 (Connection OK)
IO Chassis Phys Location : 0x01 (cabinet=0, PCI Backplane=0, PCI Domain=1)
Core Cell Number      : 0x81 (cabinet=0, cell=1, Valid)
```

On a rx7620 server, after you have issued the DE command and observed the output shown in the exhibit ,what is indicated?

- A. No problem; the system is functioning properly.
- B. One or more VRMs are not installed or failed,or one or more cell latches are are not locked
- C. There is no MP installed,or an MP is installed but not active.
- D. All cell VRMs are installed and both cell latches are locked.

Answer: B

---

**QUESTION 49:**

The cell controllers of cell 0 and cell 1 in an rx8620 server are directly connected to the SBAs of the internal PCI card cage.How would you make I/O connections to cell 2 and cell 3?

- A. Use the I/O Multiplexer.
- B. Attach a Server Expansion Unit (SEU).
- C. Configure the system with two hard partitions.
- D. Connect the I/O directly to the iternal PCI backplane.

Answer: B

---

**QUESTION 50:**

While rebooting Linux using the EFI bootmanager following modifications on an HP Integrity rx7620 server, you get the message "kernel not found" on bootup. What should you check or do?

- A. fsx:/efi/elilo:conf
- B. blkX:/boot/efi/vrmlinux
- C. boot linux console=ttyS0 option=safe
- D. EFI>effimit fsx:

Answer: A

---

**QUESTION 51:**

Which statement is correct when replacing a PCI power module on an HP Integrity rx7620 server?

- A. The PCI power module is redundant, so it can be replaced online.
- B. The power domain to which the PCI power module belongs must be shut down.
- C. A PCI power module is a critical component, if it fails, the server will power off and you must replace it offline.
- D. Shut down the partitions and power off the server. You must replace PCI power modules in pairs because of the firmware.

Answer: B

---

**QUESTION 52:**

If you have to replace a PCI smart fan assembly on an HP Integrity rx7620 server, what should you consider?

- A. The PCI smart fan is hot-swappable with no time restrictions.
- B. The PCI smart fan assembly consists of three fans and you should replace all three at the same time.
- C. The PCI smart fan assemblies are N+3, but not hot-swappable. You have to replace them during the next downtime.
- D. The PCI smart fan assembly is not-swappable, but replacement should be done in three minutes for cooling reasons.

Answer: A

---

**QUESTION 53:**

Which command line tool can be used on an rx8620 server running Windows 2003 to create a backup of the system state?

- A. rdisk
- B. backup
- C. cfigsave
- D. ntbackup

Answer: D

---

**QUESTION 54:**

Which event codes can be found in the SEL?

- A. codes with alert level 2 or higher
- B. codes with alert level 3 or higher
- C. codes with alert level 5 or 6 only
- D. codes with alert level 7 or 8 only

Answer: A

---

**QUESTION 55:**

Which command is used to check the CPUs at EFI level?

- A. cpuinfo
- B. cpuconfig
- C. configcpu
- D. infocpu

Answer: B

---

**QUESTION 56:**

On an HP Integrity rx7620 server running Windows Server 2003, you find in the Event Viewer that a "Machine Check Event" occurred. How do you proceed?

- A. Contact the system administrator since "Machine Check Events" are most likely application traps.
- B. Connect a terminal to the serial troubleshooting port on the cell board (RJ-45 connector) and collect information using the MCA.exe script.
- C. If HP SIM agent 2.2 or above are installed, analyze the files in \\Windows\\system32\\CPQMgmt\\CqMgServ\\HpMcaLog. If not installed, use the HP tool getmca.exe
- D. "Machine Check Events" Only occur on Windows Server 2003 without Service Pack 1 due to a timing problem between the MP hardware and the Windows MP driver. Install Service Pack 1 to resolve this issue.

Answer: C

---

**QUESTION 57:**

Which actions are required after replacing a cell board?

- A. Use partition commands to recreate the partition.
- B. Nothing; the MP will take care of all required steps.
- C. Use partition commands to add the cell to the partition.
- D. Check/update cell firmware level and boot the partition.
- E. Reassign the core I/O card to the cell and boot partition.

Answer: D

---

**QUESTION 58:**

After changing some HP-UX kernel parameters your system fails to boot.What is the correct method to boot from the previous kernel?

- A. There is no way to boot HP-UX from the previous kernel;you need to "boot backup."
- B. Boot from primary boot disk,interrupt the boot process and then "boot backup"
- C. Boot from primary boot disk, interrupt the boot process and then "boot previous"
- D. Boot from the recovery CD and then restore the original kernal from the last ignite backup.

Answer: B

---

**QUESTION 59:**

What needs to be done to clear the flashing front panel attention LED on an rx7620 on an rx7620 server?

- A. read the current boot log
- B. read the MP SEL logs
- C. read the OS error logs
- D. read the MP FPL logs

Answer: B

---

**QUESTION 60:**

Which MP commands can be used to check if the communication from the MP to a hanging PDHC controller is working?Select 2.

- A. ps

- B. de
- C. rs
- D. df
- E. du

Answer: B,D

---

**QUESTION 61:**

On a rx7620 server running HP-UX B.11.23, how can you show details about the PCI cards and slots in the local hard partition?

- A. rad-q
- B. olrad-q
- C. parmgr-L
- D. parstatus-l

Answer: B

---

**QUESTION 62:**

Certkiller .com wants to install Windows Server 2003 on an rx7620 server. What must be done before the installation is started?

- A. The firmware of the server should be at least v3.00.
- B. Reset the partition for reconfiguration.
- C. Check the ACPI configuration at the EFI> prompt.
- D. Both the master and the slave MP must be installed.

Answer: C

---

**QUESTION 63:**

A cell has been added successfully to an rx8620 server. How do you add this cell to the available Linux partition?

- A. Use the "create genesis profile" menu from the MP.
- B. Linux will automatically add the cell to the partition.
- C. Use Linux commands like parmodify and parstatus.
- D. Connect a PC or a server running Windows to the MP LAN and use the ParCLI tool.

Answer: D

---

**QUESTION 64:**

What is the correct way of updating the Host Bus Adapter (HBA) firmware?

- A. Use online/offline update tools.
- B. Replace ROM on the interface card.
- C. Replace the card with a newer version.
- D. Copy the firmware from another HBA.

Answer: A

---

**QUESTION 65:**

On an rx8620 server, you want to install Windows Server 2003 on an Smart Array 64xx. During the first step of the Windows installation, the installer asks if you want to install special driver for your SmartArray 64xx by using a floppy disk. How do you manage this?

- A. Instead of using a floppy disk, you will need to burn a CD with the same functionality.
- B. You have to create an "Unattended installation" which contains the appropriate drivers.
- C. By using the Smart Setup Media (SSM), the SSM will create a virtual floppy containing the drivers.
- D. You have to connect an external USB floppy drive and then mount the appropriate disk.

Answer: C

---

**QUESTION 66:**

On an rx8620 server, which commands can be used at the EFI> prompt to list all installed PCI-x cards? Select 2.

- A. pci
- B. map
- C. drvcfg
- D. drivers
- E. devtree

Answer: A,E

---

**QUESTION 67:**

A Windows 2003 rx8620 server has an MSA30 enclosure connected to an HP SmartArray 6402. A fault tolerance array set degraded. Which action will most likely improve the condition?

- A. Replace failed drive offline and use ACU to bring volume online.
- B. Add two drives and use ACU to complete rebuild process.

- C. Replace the faulty drive and perform RAID level migration using ORCA.
- D. Use ACU, add a hot spare drive and complete the rebuild process.

Answer: D

---

**QUESTION 68:**

Certkiller .com wants to erase a running Linux installation and install HP-UX; however, the HP-UX installation fails. What might be the cause?

- A. The parameter acpiconfig is set to default.
- B. HP-UX can only be installed on 1-cell partitions.
- C. Some of the I/O cards are only supported under Linux.
- D. The complex profile needs to be recreated by using the "genesis profile"

Answer: C

---

**QUESTION 69:**

On an rx7620 server, there are two DIMMs deallocated. How do you reallocate the DIMMs after replacement if they are not reallocated automatically?

- A. MP command
- B. EFI command
- C. BCH command
- D. operating system command

Answer: B

---

**QUESTION 70:**

Which commands retrieve the MCA data on the EFI level? Select 2.

- A. errdump mca
- B. getmca
- C. tombstones mca
- D. binerr -mca
- E. mca -retrieve

Answer: A,D

---

**QUESTION 71:**

On HP-UX, which command is used to view the fpl.log.XX files on an rx7620 server?

- A. more

- B. slview
- C. fplview
- D. cclogview

Answer: B

---

**QUESTION 72:**

On an HP Integrity rx8620 server running Linux,correctable memory errors (single-bit errors) are logged in the /var/log/messages.What can you use to translate the SBE messages?

- A. slview
- B. ASCII table
- C. MCA.exe on a Windows client
- D. hard physical address table (block diagram)

Answer: B

---

**QUESTION 73:**

Certkiller .com wants to configure a cluster with a shared SCSI disk between two partitions on an rx7620 server.Which command sets a different SCSI ID on the interface?

- A. drvcfg
- B. scsi init
- C. fw\_update
- D. devtree

Answer: A

---

**QUESTION 74:**

On an rx7620 server,the master MP failed and switched to the slave MP> What is the recommended procedure to replace the master MP?

- A. Replace the master MP online,check/update the firmware,and force a master/slave failover from the slave MP.
- B. Move the slave MP to the master position,install the new MP card in the slave position,check/update the MP firmware,and power on the cabinet.
- C. Shut down the partition consisting of cell 1,replace the master MP,check/update the MP firmware,and force a master/slave failover on the slave MP.
- D. Shut down the OS on all partitions,power off the 48V and remove the AC, replace the master MP, reconnect the AC, check/update the MP firmware,and power on the cabinet.

Answer: C

**QUESTION 75:**

Where are the MCA files located on HP-UX?

- A. /var/mca
- B. /var/adm/mca
- C. /var/adm/crash
- D. /var/tombstones

Answer: D

---

**QUESTION 76:**

On an rx8620 server, what causes the front panel attention LED to flash?

- A. any new event code entry in FPL.
- B. any new event code entry in SEL.
- C. an event code with alert level 3 or above.
- D. an event code with alert level 2 or above.

Answer: C

---

**QUESTION 77:**

During a repair process you lost your Complex profile. Which EFI command changes the SCSI parameters?

- A. drvcfg
- B. setscsi
- C. devconfig
- D. scsiconfig

Answer: A

---

**QUESTION 78:**

Which tool is used to get a root disk backup under HP-UX?

- A. System Imager
- B. Recovery CD
- C. Ignite-UX
- D. Recovery-UX
- E. Backup-UX

Answer: C

---

**QUESTION 79:**

Which event codes can be used found in the FPL?

- A. no event codes are logged in FPL
- B. codes with alert level 0 or higher
- C. codes with alert level 5 or 6 only
- D. codes with alert level 7 or 8 only

Answer: B

---

**QUESTION 80:**

On an HP Integrity rx8620 server,how does the MP-failover functionality work?

- A. The master and slave MPs have identical tasks at all times, so they are redundant.
- B. When a master MP fails,the slave MP takes over all of the master's management and core I/O functions.
- C. When a master MP fails,the slave MP takes over only the management function of the master MP.
- D. The only task of a slave MP is to act as a core I/O card by providing LAN and SCSI functionality to the partition.

Answer: C

---

**QUESTION 81:**

Exhibit:

```
28456
28457 PDHC 0,2      2 4b000c3902e00000 010000004257e296 04/09/2005 14:11:33 CELL_POWER_OFF
28457
28458 MP 0         2 44800ee800e00000 00fffffffff02ff68 04/09/2005 14:11:34 CELL_OFF
```

What happens when the System Event Log on an rx8620 server shows the information in the exhibit?

- A. Cell 0 is powered off.
- B. Cell 2 is powered off.
- C. cell 0 was removed.
- D. cell 2 was removed.

Answer: B

---

**QUESTION 82:**

You are installing Windows Server 2003 on an HP Integrity rx7620 server.At the SAC prompt,you try to set the IP address of the system using the following:

SAC>i 2 15.99.80.1 255.255.255.0.15.99.80.254

The following message is returned:

network can not be configured

What is the cause?

- A. The appropriate service on EFI has not started yet.
- B. YOu cannot configure the network interface,it uses DHCP.
- C. A network cable is not connected to the appropriate network interface.
- D. You have to type the command in a Windows command prompt,not on SAC.

Answer: C

---

**QUESTION 83:**

You are running HP-UX and the primary boot disk failed.What is the correct command to boot from the alternate boot path without quorum mode?

- A. hpux-Iq
- B. hpux-qn
- C. vmunix-Iq
- D. boot vmunix-Iq
- E. boot vmunix-nq

Answer: D

---

**QUESTION 84:**

An engineer needs to back up the boot disk (dkb 200) on OpenVMS.He creates a new device with the name "dka 100" and mounts it.Which command performs the backup?

- A. fbackup-f dkb200: dka100
- B. copy dkb200: dka100
- C. backup/image dkb200: dka100
- D. dd dkb200: dka100

Answer: C

---

**QUESTION 85:**

Exhibit:

```
C:\Windows> parstatus -X
Error:unsupported platform
```

You want to check the partition status on an rx7620 server using a remote PC where you have installed the parCLI tool.What is the cause of the failure message shown in the exhibit?

- A. The partitions are down.
- B. No partitions are configured.
- C. The command syntax is not correct.
- D. The ParCLI tool can only be used on Superdome systems.

Answer: C

---

**QUESTION 86:**

What is the cause of all front fan LEDs flashing on an rx8620 server after AC power on?

- A. cell board is faulty
- B. slave MP is not present
- C. system backplane is faulty
- D. slave MP is not seated properly

Answer: E

---

**QUESTION 87:**

Which component performs verification of Voltages, temperatures and the presence of power supplies and fans during a POST on a hard partition system?

- A. Power Grid (PG)
- B. Power Monitor (PM)
- C. Baseboard Management Controller (BMC)
- D. Processor/System Abstraction Layer (PAL/SAL)

Answer: B

---

**QUESTION 88:**

Which tool can be used on an rx8620 server running Windows 2003 to save the MCA/CMC/PE binary files online?

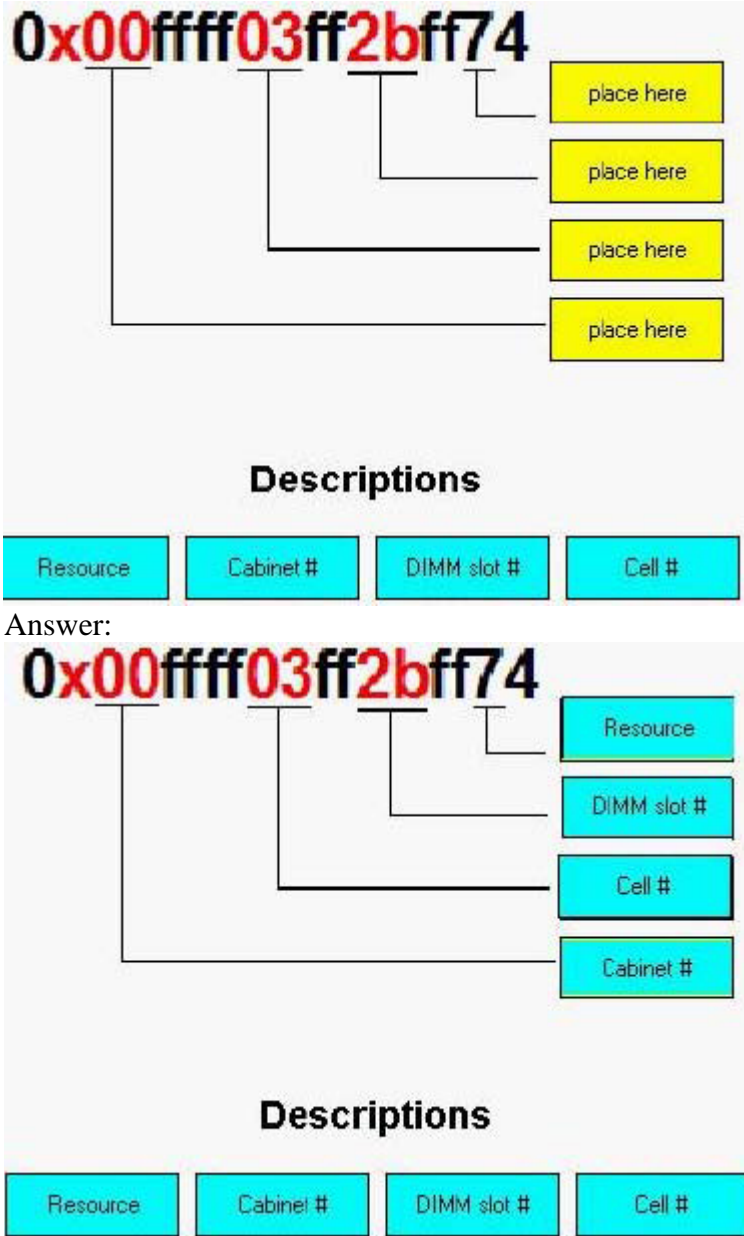
- A. HP Essentials Pack
- B. HP System Insight Manager
- C. HP MCA Analyzer
- D. HP Essentials RDP

Answer: B

---

**QUESTION 89:**

DRAG DROP



### QUESTION 90:

Which commands can be used to check the status of the fans on an rx8620 server? Select 2.

- A. olard
- B. MP> df
- C. MP> ps
- D. MP> ss
- E. fanstatus
- F. parstatus

Answer: C,F

---

**QUESTION 91:**

Where are the event logs located for an rx8620 server?

- A. on each cell board
- B. on the SMS
- C. on the operating system level only
- D. On the Management Processor

Answer: D

---

**QUESTION 92:**

Which utility is used to run diagnostics for the XBC Crossbar Chip?

- A. WDIAG
- B. REODIAG
- C. ROGODIAG
- D. CIODIAG

Answer: C

---

**QUESTION 93:**

In the following system path from an rx7620 server, what does the first digit refer to?  
1/0/1/1/0/4

- A. LBA 1
- B. SBA 1
- C. Cell 1
- D. PCI slot 1

Answer: C

---

**QUESTION 94:**

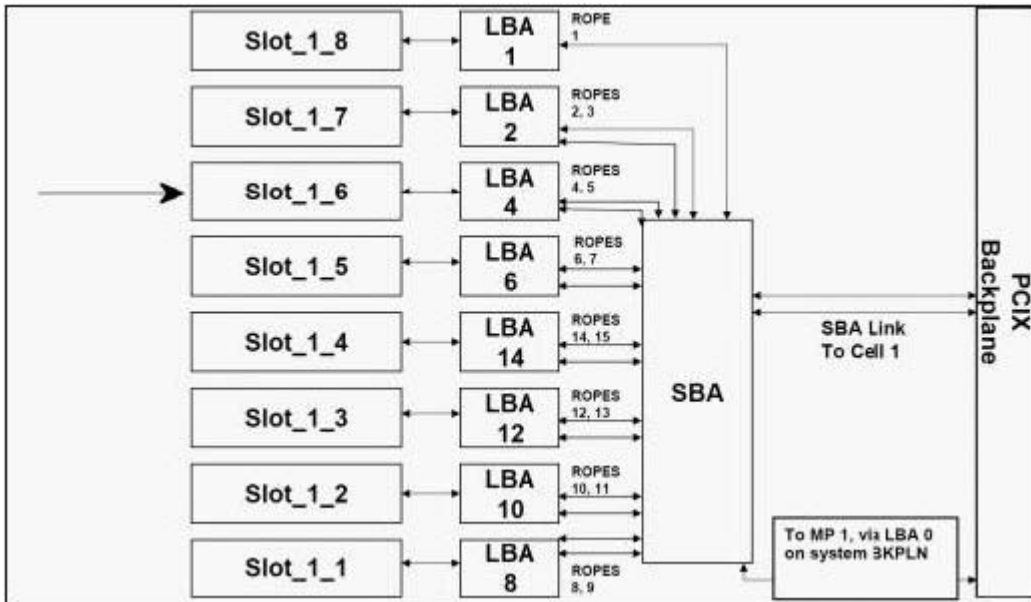
Which command shows a list of devices and their system paths on an rx8620 server Red Hat Linux?

- A. listio
- B. ioscan
- C. lspci
- D. show device

Answer: C

**QUESTION 95:**

Exhibit:



What is the path of the PCI-X slot identified by the arrow in the block diagram shown?

- A. 0/0/3/1/0
- B. 1/0/12/1/0
- C. 0/0/12/1/0
- D. 0/0/12/3/0

Answer: C

**QUESTION 96:**

Which cell is the internal DVD drive connected to on an rx7620 server?

- A. Cell 0
- B. Cell 1
- C. Cell 2
- D. Cell 3

Answer: B

**QUESTION 97:**

Exhibit:

0/0/8/1/0.0.0

In the path shown for HP-UX, what does the highlighted character represent?

- A. the PCI bus ID number
- B. the PCI function number
- C. the SCSI logical unit number
- D. the SCSI physical unit number

Answer: C

---

**QUESTION 98:**

DRAG DROP

**Position in numbering scheme**

First Number	Second Number	Third Number	Fourth Number	Fifth Number	Sixth Number
--------------	---------------	--------------	---------------	--------------	--------------

**Devices**

LBA	Function	SBA	Device	Target ID	Cell Number
-----	----------	-----	--------	-----------	-------------

Answer:

**Position in numbering scheme**

Cell Number	SBA	LBA	Device	Function	Target ID
-------------	-----	-----	--------	----------	-----------

**Devices**

LBA	Function	SBA	Device	Target ID	Cell Number
-----	----------	-----	--------	-----------	-------------

---

**QUESTION 99:**

On an HP Integrity server running Linux,you execute the lspci command and receive the following:

20:01.0 SCSI storage controller MPT Dual Ultra320 SCSI (rev 07)

20:01.1 SCSI storage controller MPT Dual Ultra320 SCSI (rev 07)

How do you interpret this?Select 2.

- A. There is one SCSI PCI card installed with two ports.
- B. There are two separate SCSI PCI cards installed.
- C. The card(s) are installed in a PCI-slot connected to rope 1
- D. The card(s) are installed in a PCI-slot connected to rope 2

Answer: A,C

**QUESTION 100:**

Which utility shows the hardware path values for a specific PCI device on an rx8620 server running Server 2003?

- A. PCI Viewer
- B. Device Mapper
- C. Device Manager
- D. Utility Manager

Answer: C

---

**QUESTION 101:**

Which tool shows performance information on HP-UX?

- A. Storage Area Manager
- B. GlancePlus
- C. Oracle Parallel Server
- D. Veritas Volume Manager

Answer: B

---

**QUESTION 102:**

Which OpenView tool can be used to check disk I/O rate by file system,virtual memory and raw activity?

- A. Glanceplus
- B. Network Node Manager
- C. Data protector
- D. Business Process Insight

Answer: A

---

**QUESTION 103:**

Which HP OpenView tool is used for automated discovery,mapping,monitoring and management of devices across distributed,multi-vendor SAN,NAS, and DAS environment?

- A. Storage Optimizer
- B. Storage Node Manager
- C. Storage Media Operations
- D. Storage Resource Manager

Answer: B

---

**QUESTION 104:**

Certkiller .com complains about performance. OverView GlancePlus identifies there is a bottleneck with a disk that is completely reserved for swap. What needs to be checked?

- A. number of CPUs
- B. nfiles kernel parameter
- C. amount of system memory
- D. max\_users kernel parameter

Answer: C

---

**QUESTION 105:**

Which cell or cells are connected to the internal DVD of an rx7620 with multiple hard partitions?

- A. cell 0
- B. cell 1
- C. cells 0 and 1
- D. cell 0, 1, 2 and 3

Answer: B

---

**QUESTION 106:**

Which MP commands performs a firmware update on an rx7620 server? Select 3.

- A. dfw
- B. fwuu
- C. fw
- D. df
- E. xu
- F. osp

Answer: A,C,F

---

**QUESTION 107:**

Certkiller .com is preparing to install an rx7620 server. How many power cables are needed for a full redundancy configuration?

- A. 1

- B. 2
- C. 3
- D. 4

Answer: D

---

**QUESTION 108:**

On an rx8620 server, what are the three sets of fans? Select 3.

- A. I/O
- B. disk
- C. front/rear
- D. memory
- E. cell

Answer: A,C,E

---

**QUESTION 109:**

After upgrading from an rp8400 to an rx8620 server, Certkiller .com wants to have the HP-UX disks connected using Fibre Channel. How is this performed?

- A. There is no Fibre Channel boot support for HP-UX.
- B. During the installation process, HP-UX will update the EFI firmware on the Fibre Channel card.
- C. Manually check/update the EFI firmware on the Fibre Channel card to have boot support.
- D. Install the OS on one of the internal disks and then copy it over to the Fibre Channel disk.

Answer: C

---

**QUESTION 110:**

Certkiller .com has an rx7620 server with one cell. How many PCI slots are available, including the core I/O slot?

- A. 7
- B. 8
- C. 14
- D. 16

Answer: B

---

**QUESTION 111:**

Which physical installation rule should be followed when installing several rx8620 systems at a site?

- A. Install only one rx8620 per rack.
- B. Install one serial console per rx8620.
- C. Ensure that a storage array is directly beside the server.
- D. Ensure that air ventilation is from the front of the system.

Answer: D

---

**QUESTION 112:**

Which MP command is used to change the product number or the serial number of an rx7620 server?

- A. cc
- B. id
- C. ss\_config
- D. ss\_update

Answer: B

---

**QUESTION 113:**

What is the maximum number of PCI boards including Core I/O that can be installed on a dual cell configuration in an rx7620 server?

- A. 12
- B. 14
- C. 15
- D. 16

Answer: D

---

**QUESTION 114:**

On an HP Integrity rx8620 server, what happens if the system encounters a correctable L2 cache error?

- A. The firmware logs a CMC event and reports it to the operating system.
- B. The firmware logs a MCA event and reports it to the operating system.
- C. The firmware deactivates the L2 cache, reports it to the operating system and an entry is created in the PDT.
- D. Since it is a correctable error, no action is taken immediately. On the next reboot, the

user should deallocate the CPU at EFI level.

Answer: A

---

**QUESTION 115:**

What is "cell-local memory" (CLM)?

- A. memory installed and configured on one hard partition so that only cells from that hard partition can use it.
- B. memory dedicated to the CPUs on the same cell where it is installed,so that CPUs from other cells cannot access this memory.
- C. virtual memory created by the operating system's kernel to allow processes to be executed on a cell,instead of on a hard partition.
- D. a memory topology derived from "interieaved memory"with extra features such as "cell local online memory replacement and addition"and "cell-local RAIDO+1 topology"

Answer: B

---

**QUESTION 116:**

What does chip spare/kill accomplish on the rx7620 server?

- A. When the memory has a double-bit error,OpenVMS will Keep running by sparing the bad chip immediately.
- B. When the memory has a double-bit error,HP-UX will keep running by sparing the suspect bad chip immediately.
- C. When a complete chip failure causes single-bit errors that are covered by the hardware/firmware,chip spare keeps the system running.
- D. When the memory has one single-bit error,Linux will panic.However,on reboot the hardware/firmware does a chip spare at the next boot.

Answer: C

---

**QUESTION 117:**

When comparing Pentium processor-base servers with Itanium processor-based servers such as the HP rx7620/rx8620,what does Extensible Firmware Interface (EFI) replace?

- A. Non Volatile RAM (NvRAM)
- B. Basic Input Output System (BIOS)
- C. Advanced Configuration and Power Interface (ACPI)
- D. Advanced Programmable Interrupt Controller (APIC)

Answer: B

---

**QUESTION 118:**

What is the key difference SRAM and DRAM?

- A. DRAM is faster because it is dynamic.
- B. SRAM means Speed RAM and is faster.
- C. SRAM is faster because it is synchronous.
- D. DRAM is faster because it uses dual inline technology.

Answer: C

---

**QUESTION 119:**

What is the maximum number of echelons supported per cell on the rx7620 server?

- A. 4
- B. 20
- C. 16
- D. 32

Answer: B

---

**QUESTION 120:**

Which statement is correct regarding multi-level caching?

- A. If the larger cache misses, the next smaller cache is checked.
- B. Level 4 caching is usually the fastest resource for the processor.
- C. Multi-level caches generally operate by checking the largest level cache first.
- D. Multi-level caches generally operate by checking the smallest level 1 cache first.

Answer: D