

Actualtests.com

The Power of Knowing



Exam : 646-204

Title : Cisco Sales Expert

Ver : 01-21-2009

QUESTION 1:

Which two characteristics of optical networks data to be transmitted over extremely long distances? (Choose two.)

- A. No electromagnetic interference (EMI)
- B. Minimal signal loss
- C. No bandwidth limits
- D. No encryption

Answer: A,B

QUESTION 2:

What is a wide-area network (WAN)?

- A. A network that is restricted to a single building, a group of buildings, or even a single room
- B. A network that connects client devices wirelessly using radio waves
- C. A network that crosses metropolitan, regional or national boundaries
- D. A network that encompasses an entire city or metropolitan area and connects multiple local-area networks (LANs)

Answer: C

QUESTION 3:

Which IP telephony component provides call processing, such as signaling that in a traditional voice network is provided by switching equipment, such as a PBX?

- A. Voice gateways, such as the Cisco VG248 analog phone gateway
- B. Call-management hardware and software, such as Cisco Call Manager
- C. Client-based software, such as Cisco SoftPhone
- D. Advanced call-handling software, such as Cisco Unity

Answer: B

QUESTION 4:

A software engineering firm wants to streamline call center operations to reduce customer wait times and improve employee productivity. Which Cisco solution best

matches this business need?

- A. IP Telephony
- B. DSL
- C. WLAN
- D. Optical Network

Answer: A

QUESTION 5:

A growing publishing firm needs a secure way for remote content editors to connect through the Internet to the company extranet.

Which Cisco solution best matches this business need?

- A. IP telephony
- B. Virtual Private Network (VPN)
- C. Content Networking
- D. Wireless network

Answer: B

QUESTION 6:

. What creates an encrypted tunnel through a shared public network infrastructure, such as the Internet to provide a secure connection between remote users and a private network?

- A. VPN
- B. HTTP
- C. DSL
- D. Optical Networking

Answer: A

QUESTION 7:

What does a router do?

- A. Reads Media Access Control (MAC) addresses to forward messages to the correct location and connects the local-area network (LAN) to the wide-area network (WAN)
- B. Stores data on network and connects the local-area network (LAN) to the wide-area network (WAN)

- C. Routes traffic down alternative paths and connects the local-area network (LAN) to the wide-area network (WAN)
- D. Broadcasts data to all devices that are connected to it across the local-area network (LAN) and wide-area network (WAN)

Answer: C

QUESTION 8:

Which device is used in wireless networks to send transmission to a target area?

- A. Directional Antenna
- B. Optical fiber
- C. Omni-directional antenna
- D. Access point

Answer: A

QUESTION 9:

Which wireless local-area network (WLAN) device is often used to make wireless connections between buildings or campuses?

- A. Access Point
- B. Bridge
- C. Router
- D. Client Adapter

Answer: B

QUESTION 10:

On what type of network does the Cisco Unified Communications system reside?

- A. A single, joined voice, video and data network
- B. Voice networks only
- C. Wireless networks only
- D. Data networks only
- E. Independent voice, video and data networks

Answer: A

QUESTION 11:

Which Cisco router series is the premier high-end routing platform for service-provider backbone and edge applications that support DS3 for Frame Relay ?

- A. 7600 Series
- B. 12000 Series
- C. 10000 Series
- D. 15000 Series

Answer: B

QUESTION 12:

Which Internet Protocol (IP) telephony element is best categorized as a voice application component?

- A. Private branch exchange (PBX)
- B. Advanced audio conferencing software
- C. IP telephone
- D. Voice Gateway

Answer: B

QUESTION 13:

A Service Provider wants to prevent the repeat of a denial of service (DOS) attack that recently disabled Internet access for several thousand customers.
Which Cisco solution best matches this business need?

- A. Wireless Network
- B. Network Security
- C. Virtual Private Network (VPN)
- D. Content Networking

Answer: B

QUESTION 14:

Which network security strategy element refers to implementing barriers that serve as both physical and virtual protection against possible threats?

- A. test the system
- B. secure the network
- C. develop security policy
- D. monitor and respond

Answer: B

QUESTION 15:

What features does the partner E-learning connection provide?

- A. Full versions of all Cisco Technical-level classes
- B. Lists of training-partner class offerings
- C. Live Instructor-led, web-based classes
- D. Flexible, web-based knowledge and learning
- E. Hosted website that partners use to deliver e-learning to customers

Answer: D

QUESTION 16:

Which component should you use to reduce collision issues on a large LAN?

- A. switch
- B. printer
- C. host
- D. repeater

Answer: A

QUESTION 17:

Which device is used in wireless networks to send transmission to a target area?

- A. Optical fiber
- B. Access point
- C. Directional Antenna
- D. Omni-directional antenna

Answer: C

QUESTION 18:

Which tool provides a complete guide that makes it easier for partners, regardless of their experience level to sell Cisco Unified Communications solutions to their customers?

- A. Cisco Discovery
- B. Solution Expert
- C. Sales Accelerator
- D. Quote Builder
- E. Competitive Edge

Answer: C

QUESTION 19:

A software engineering firm wants to streamline call center operations to reduce customer wait times and improve employee productivity. Which Cisco solution best matches this business need?

- A. Optical Network
- B. DSL
- C. IP Telephony
- D. WLAN

Answer: C

QUESTION 20:

In which are of the campus local-area network (LAN) are the user computers attached to the network?

- A. Distribution
- B. Access
- C. Aggregation
- D. Core

Answer: B

QUESTION 21:

What type of approach is used to deploy, operate and optimize Cisco Solutions?

- A. Lifecycle services
- B. Lifetime advantage

- C. Lifecycle advantages
- D. Lifestyle advantages
- E. Lifestyle services

Answer: A

QUESTION 22:

Which interoperability standard provides a maximum speed on a wireless local-area network (WLAN) of 11 megabits per second?

- A. 802.11a
- B. Service set Identifier (SSID)
- C. 802.11b
- D. 802.11g

Answer: C

QUESTION 23:

Cisco 12000 Series routers provide carrier-class availability and performance in both the network backbone and at the edges.

This solution is appropriate for a _____.

- A. Midsize financial services company that has acquired a smaller company, which has locations in three different cities
- B. University that wants to create an integrated communications network that supports distance learning, e-learning and collaborative research
- C. New and growing Internet hosting company with global Internet data centers whose business customers depend on the reliability of the network
- D. Midsize enterprise organization that is migrating to a converged network for its Internal Employees to address user needs for voice, video and data

Answer: C

QUESTION 24:

Which Internet Protocol (IP) telephony component category includes network-based software elements that enable advanced IP telephony functions?

- A. Infrastructure
- B. Call Management
- C. Clients

D. Voice Applications

Answer: D

QUESTION 25:

What strategy will protect network resources and services from unauthorized actions?

- A. Network security
- B. Collaborative networking
- C. Network Management
- D. Content storage networking

Answer: A

QUESTION 26:

Which Cisco product is a software component that blocks unwanted connections and provides other gateway security functions for small business?

- A. Cisco Private Internet Exchange (PIX) Firewall
- B. Cisco Secure Access Control Server (ACS)
- C. Cisco Firewall Services Module (FWSM)
- D. Cisco Internetwork Operating System (IOS) Firewall

Answer: D

QUESTION 27:

How many layers are in the OSI Model?

- A. 8
- B. 5
- C. 7
- D. 6

Answer: C

QUESTION 28:

Which program has been specifically designed for small-sized and medium-sized businesses and provides easy, cost-effective network support to help ensure reliable

operations, contain costs and protect their investments?

- A. Cisco SP Base
- B. Cisco Smart Foundation Service
- C. Cisco SMARTnet Onsite
- D. Cisco Software Application Support Services
- E. Cisco Focused Technical Support Services

Answer: B

QUESTION 29:

Which Cisco product is a hardware component that supports content filtering and other gateway security functions for the Catalyst 6500 Series?

- A. Cisco Firewall Services Module (FWSM)
- B. Cisco Internetwork Operating System (IOS) Firewall
- C. Cisco VPN/Security Management Solution (VMS)
- D. Cisco Private Internet Exchange (PIX) Firewall

Answer: A

QUESTION 30:

SAS and SASU provide which two services? (Choose two.)

- A. Online support
- B. Maintenance updates
- C. On-site support
- D. Replacement of hardware

Answer: A,B

QUESTION 31:

Which two of the following are benefits of engaging Cisco Field Resources? (Choose two.)

- A. Access free implementation and support services
- B. Access free hardware and software for resale
- C. Increase revenue and improve margin
- D. Maximize the number and value of customer sales engagements
- E. Eliminate sales and marketing expense

Answer: C,D

QUESTION 32:

Which technology is best deployed to meet the needs of users who desire secure remote access to corporate resources?

- A. Cisco Intrusion Prevention System
- B. Cisco Adaptive Security Appliances
- C. Cisco Security Agent
- D. Cisco Adaptive Security Device Manager
- E. VPN-enabled routers

Answer: B

QUESTION 33:

A global manufacturer of automobile parts wants to implement specialized voice applications to increase productivity and reduce the cost of overseas toll calls. Which Cisco solution best matches this business need?

- A. Digital subscriber line (DSL)
- B. Wireless local-area network (WLAN)
- C. Optical network
- D. Internet Protocol (IP) telephony

Answer: D

QUESTION 34:

A partnership between an architectural firm and an engineering consulting company requires a network-to-network connection to boost productivity and prevent interception of proprietary information. Which Cisco solution best matches this business need?

- A. Storage-area Network (SAN)
- B. Virtual Private Network (VPN)
- C. Content Delivery Networking (CDN)
- D. IP Telephony

Answer: B

QUESTION 35:

Which Internet Protocol (IP) telephony component category includes network-based software elements that enable advanced IP telephony functions?

- A. Infrastructure
- B. Voice Applications
- C. Clients
- D. Call Management

Answer: B

QUESTION 36:

What are the three commonly recognized top-level business drivers for data centers? (Choose three.)

- A. A need to decentralized IT assets
- B. Protecting the business from information outages
- C. Optimizing the efficiency with which IT operates
- D. Increasing the rate of adoption of new, nonstandradized technologies
- E. Growing IT systems
- F. An increased need for specialized IT silos

Answer: B,C,E

QUESTION 37:

What resource allows Cisco partners to get funding for preapproved activities, such as catalogs, yellow pages, events, trainings, e-mail blasts and advertising?

- A. Solution Expert
- B. Cisco Discovery
- C. Steps to Success
- D. Quote Builder
- E. Joint Marketing Fund

Answer: E

QUESTION 38:

What is an attach that occurs when a string of unnecessary commands or requests is sent

to a network device?

- A. Virus
- B. Data Interception
- C. Worm
- D. Denial of Service (DOS)

Answer: D

QUESTION 39:

Which two technologies help enterprises reduce complex computing jobs to minutes and hours, rather than taking days and weeks? (Choose two.)

- A. Hyperchannel
- B. Secure Socket Layer
- C. Firewall Services
- D. InfiniBand
- E. SCSI over IP
- F. Remote Direct Memory Access

Answer: D,F

QUESTION 40:

A global manufacturer of automobile parts wants to implement specialized voice applications to increase productivity and reduce the cost of overseas toll calls. Which Cisco solution best matches this business need?

- A. Optical Network
- B. WLAN
- C. DSL
- D. IP Telephony

Answer: D

QUESTION 41:

In the OSI Model, switching occurs at which layer?

- A. Layer 2
- B. Layer 1
- C. Layer 4

D. Layer 3

Answer: A

QUESTION 42:

Which two high-profile regulations have a global impact on the financial industry?
(Choose two.)

- A. Computer Fraud and Abuse Act
- B. Sarbanes-Oxley
- C. CNIC
- D. Basel II

Answer: B,D

QUESTION 43:

What is the primary Cisco goal for developing networking technology?

- A. End-to-End solutions based on industry open standards
- B. Lowest cost products based on industry open standards
- C. End-to-End solutions based on Cisco Proprietary software
- D. "best of breed" based on Cisco proprietary software

Answer: A

QUESTION 44:

The employees of an organization meet regularly in conference rooms for project updates and presentations.

What need for this organization can be met by a wireless solution?

- A. Augmenting an existing network
- B. Providing a temporary network need
- C. Having freedom of movement within a network range
- D. Ensuring secure presentations

Answer: C

QUESTION 45:

What feature does the Partner E-Learning Connection provide?

- A. Live instructor-led, web-based classes
- B. Flexibility, web-based knowledge and learning
- C. Lists of training-partner class offerings
- D. Full versions of all Cisco technical-level classes
- E. Hosted website that partners use to deliver e-learning to customers

Answer: B

QUESTION 46:

SMARTnet and SMARTnet onsite provide which two services? (Choose two.)

- A. Updates to all Cisco Software
- B. Support for application software such as Cisco CallManager
- C. Support for Cisco IOS Software
- D. Registered access to Cisco.com

Answer: C,D

QUESTION 47:

On what type of network does the Cisco Unified Communication system reside?

- A. Wireless networks only
- B. Voice networks only
- C. Data networks only
- D. Independent voice, video and data networks
- E. A single, joined voice, video and data networks

Answer: E

QUESTION 48:

An essential element of Cisco development has been its leading role in advancing what network protocol?

- A. Serial Line Internet Protocol (SLIP)
- B. Internet Protocol (IP)
- C. Point-to-Point Protocol (PPP)
- D. Asynchronous Transfer Mode (ATM)

Answer: B

QUESTION 49:

Which network security strategy element refers to implementing barriers that serve as both physical and virtual protections against possible threats?

- A. Monitor and respond
- B. Test the system
- C. Develop security policy
- D. Secure the network

Answer: D

QUESTION 50:

What is the key element in SMB solutions?

- A. They reduce complexity by eliminating features
- B. They reduce the cost and complexity associated with multiple services in a single device
- C. They provide the lowest possible cost
- D. Reliability is not important since replacement products are inexpensive
- E. Consumer-level products are suitable for SMB needs

Answer: B

QUESTION 51:

A landscape architecture company wants to increase productivity by deploying new multiservice applications, including collaborative online design workshops, web-enabled call centers and real-time distance learning.

Which Cisco solution matches this business need?

- A. Wireless local-area network (WLAN)
- B. Storage-area network (SAN)
- C. Internet Protocol (IP) telephony
- D. Network Security

Answer: C

QUESTION 52:

Which two of the following are benefits of engaging Cisco Field Resources? (Choose two.)

- A. Access free implementation and support services
- B. Increase revenue and improve margin
- C. Eliminate sales and marketing expense
- D. Maximize the number and value of customer sales engagements
- E. Access free hardware and software for resale

Answer: B,D

QUESTION 53:

Which feature does the Cisco IOS provide for networks?

- A. Content routing that pushes high-priority media to the network edge
- B. Network Intelligence that enables business-critical applications
- C. Network Management that automates moves, adds and changes
- D. Network Management that automates transaction backups

Answer: B

QUESTION 54:

What ensures that voice packets are given priority throughout the network so that conversations arrive intact?

- A. Packet encryption
- B. Centrex
- C. QoS
- D. Intelligent call routing

Answer: C

QUESTION 55:

Which features does the Cisco IOS provide for networks?

- A. Content routing that pushes high-priority media to the network edge
- B. Network Management that automates transaction backups

- C. Network Management that automates moves, adds and changes
- D. Network Intelligence that enables business-critical applications

Answer: D

QUESTION 56:

Which tool provides a complete guide that makes it easier for partners, regardless of their experience level to sell Cisco Unified Communications solutions to their customers?

- A. Sales Accelerator
- B. Quote Builder
- C. Cisco Discovery
- D. Solution Expert
- E. Competitive Edge

Answer: A

QUESTION 57:

In which area of the campus local-area network (LAN) are the user computers attached to the network?

- A. Distribution
- B. Access
- C. Core
- D. Aggregation

Answer: B

QUESTION 58:

What is a benefit of Internet Protocol (IP) telephony?

- A. Synchronizes password exchanges for call setup
- B. Enables two-way voice transmission over a packet-switched TCP/IP network
- C. Eliminates the need for physical cabling in a TCP/IP network
- D. Creates an encrypted tunnel for voice through a Transmission Control Protocol TCP/IP network

Answer: B

QUESTION 59:

Which three products are targeted primarily for deployment in Enterprise Environments?
(Choose three.)

- A. Cisco 7200 Series Routers
- B. Cisco 1800 Series ISRs
- C. Cisco 2800 Series ISRs
- D. Cisco Catalyst 6500 Series Switches
- E. Cisco Catalyst 4500 Series switches
- F. Cisco Catalyst 2960 Series Switches

Answer: A,D,E

QUESTION 60:

Which two scenarios are opportunities for selling a Cisco VPN solution? (Choose two.)

- A. A large ISP that has been targeted by a denial of service attack that disables Internet access for several thousand customers
- B. A growing publishing firm that need a secure way for remote content editors to connect through the Internet to the company extranet
- C. An online music retailer with multiple downloading locations that wants to centralize access to large media files
- D. A mortgage-lending company that opens several branch office that requires secure access to underwriting information on the corporate extranet

Answer: B,D

QUESTION 61:

Which Cisco router series supports Frame Relay, Asynchronous Transfer Mode (ATM), and leased lines in a single platform, allowing service providers to offer multiple types of services to end users without having to maintain multiple edge devices?

- A. 3600 Series
- B. 7600 Series
- C. 10000 Series
- D. 15000 Series

Answer: C

QUESTION 62:

A company with 100 employees predicts that its employee number will triple in the next six months. It is currently using hubs to connect employee computers. Which solution should an account manager offer that would best meet upcoming company needs?

- A. optical network
- B. storage network
- C. switched network
- D. Internet protocol (IP) telephony

Answer: C

QUESTION 63:

A switch operates at Layer 2 of the OSI model. What is the name of that layer?

- A. session
- B. network
- C. data link
- D. presentation

Answer: C

QUESTION 64:

In which area of the campus local-area network (LAN) are the user computers attached to the network?

- A. core
- B. access
- C. distribution
- D. aggregation

Answer: B

QUESTION 65:

What are five layers in the OSI model? (Choose five.)

- A. session
- B. physical

- C. protocol
- D. gateway
- E. data link
- F. transport
- G. application

Answer: A,B,E,F,G

QUESTION 66:

As a general rule, which statement is true?

- A. You should route when you can, switch when you must.
- B. You should switch when you can, route when you must.
- C. Layer-2/3 switches have more wide-area network (WAN) connections than routers.
- D. Routers have more local-area network (LAN) connections than Layer-2/3 switches.

Answer: B

QUESTION 67:

Which component connects dissimilar network environments?

- A. hub
- B. MAU
- C. gateway
- D. repeater

Answer: C

QUESTION 68:

Which device connects a local-area network (LAN) to a wide-area network (WAN)?

- A. router
- B. switch
- C. bridge
- D. Layer-2/3 switch

Answer: A

QUESTION 69:

How does a switch respond when it receives a message?

- A. It reads the Layer-5 information and sends the message directly to the intended computer.
- B. It reads the Media Access Control (MAC) address and sends the message directly to the intended computer.
- C. It reads the Layer-5 information and broadcasts the message to all the computers that are connected to the switch.
- D. It reads the Media Access Control (MAC) address and broadcasts the message to all the computers that are connected to the switch.

Answer: B

QUESTION 70:

Which area of the campus local-area network (LAN) serves as the aggregation point for the distribution-area switches and the connection point between the LAN and wide-area network (WAN)?

- A. core
- B. access
- C. application
- D. convergence

Answer: A

QUESTION 71:

Which area of the campus local-area network (LAN) acts as an aggregation point for access-area switches and provides the connection between the access and core areas?

- A. application
- B. distribution
- C. aggregation
- D. convergence

Answer: B

QUESTION 72:

Which Cisco Catalyst series best fits in the distribution area of a midsize campus

local-area network (LAN)?

- A. 2900
- B. 3700
- C. 4000
- D. 7200

Answer: C

QUESTION 73:

You work as a network consultant at Certkiller .com. One of your clients has a large LAN. Recently network performance has been degraded and users on the LAN complaint about slow response time.

What should you recommend the client to do?

- A. Use printers.
- B. Use hosts.
- C. Use switches
- D. Use hubs.
- E. Use repeaters.

Answer: C

QUESTION 74:

You work as a network consultant at Certkiller .com. One of your clients needs to set up a campus LAN. You are required to select appropriate network components for this client. (Select three.)

- A. Hub
- B. Bridge
- C. Switch
- D. Gateway
- E. Layer-2/3 switch
- F. Layer-12/13 switch
- G. Router
- H. PBX system

Answer: C,E,G

QUESTION 75:

You work as an account manager at Certkiller .com. Currently hubs are used internally on the Certkiller LAN. A single router provides Internet access. Certkiller now have plans to launch an application which will demand dedicated bandwidth a improved network capacity.

What should you recommend? (Each answer is a separate solution. Select two.)

- A. All the hubs should be replaced with gateways at the access area.
- B. All the hubs should be replaced with bridges at the access area.
- C. All the hubs should be replaced with switches at the access area.
- D. Use a new network distribution area that is composed of routers.
- E. Use a new a network distribution area that is composed Layer-2/3 switches.
- F. Use a new network distribution area that is composed of bridges.

Answer: C,E

QUESTION 76:

In which area of the campus local-area network (LAN) are the user computers attached to the network?

- A. core
- B. access
- C. distribution
- D. aggregation

Answer: B

QUESTION 77:

Your Certkiller trainee Bob is curious about Layer 2/3 switches. He knows that they increase network traffic efficiency by combining functionalities from two other hardware devices.

He asks you which two devices these are? (Select two.)

- A. Bridges
- B. Hubs
- C. Switches
- D. Routers
- E. Access Points
- F. Gateways
- G. Gigabit Ethernet
- H. Optical Fibre

Answer: C,D

QUESTION 78:

Your Certkiller trainee is curious about switches and the OSI model. What should you tell her? (Select two).

- A. Switches work on Layer 1
- B. Switches work on Layer 2
- C. Switches work on Layer 3
- D. Switches work on Layer 4
- E. Switches work on Data link layer.
- F. Switches work on Presentation layer.
- G. Switches work on Session layer.
- H. Switches work on Network layer.

Answer: B,E

QUESTION 79:

You work as a network consultant at Certkiller .com. One of your clients wants to connect an Ethernet network that extends over a two-mile area.

What network component would be the most appropriate to use?

- A. NICs
- B. Repeater
- C. Personal computers
- D. Router
- E. Switch
- F. Gateway Hubs

Answer: B

QUESTION 80:

Your Certkiller trainee is curious about routers and the OSI model. What should you tell her? (Select two).

- A. Routers work on Layer 1
- B. Routers work on Layer 2
- C. Routers work on Layer 3
- D. Routers work on Layer 4
- E. Routers work on Data link layer.
- F. Routers work on Presentation layer.

- G. Routers work on Session layer.
- H. Routers work on Network layer.

Answer: C,H

QUESTION 81:

Which two operate on the network layer of the Open System Interconnection (OSI) model? (Choose two)

- A. hub
- B. router
- C. Layer-2 switch
- D. Layer-2/3 switch

Answer: B,D

QUESTION 82:

A Layer-2/3 switch increases traffic efficiency on the network by combining some of the functionalities of _____.

- A. hubs and switches
- B. switches and routers
- C. switches and access points
- D. switches and Gigabit Ethernet

Answer: B

QUESTION 83:

Which component performs translations at multiple layers of the OSI model?

- A. Hub
- B. MAU
- C. Gateway
- D. Repeater

Answer: C

QUESTION 84:

As a Certkiller instructor you are required to explain how a Cisco switch operates. Which of the following statements should you use?

- A. When the switch receives a message it reads the Layer-5 information and broadcasts the message to all computers that are connected to the switch.
- B. When the switch receives a message it reads the Media Access Control (MAC) address and broadcasts the message to all the computers that are connected to the switch.
- C. When the switch receives a message it reads the Layer-5 information and send the message directly to the intended computer.
- D. When the switch receives a message it reads the Media Access Control (MAC) address and sends the message directly to the intended computer.

Answer: D

QUESTION 85:

You work as a network consultant at Certkiller .com. One of your clients has a small campus LAN network. They want a Cisco Catalyst in the access area of the LAN. What should you tell them?

- A. Use a 2600 series Cisco Catalyst.
- B. Use a 2900 series Cisco Catalyst.
- C. Use a 6500 series Cisco Catalyst.
- D. Use a 12000 series Cisco Catalyst.
- E. Use a 3600 series Cisco Catalyst.

Answer: B

QUESTION 86:

You work as a network consultant at Certkiller .com. One of your clients has a midsize campus LAN. Now you are required to recommend what Cisco hardware that should be used in the access area.

- A. A Cisco Catalyst from the 1700 series.
- B. A Cisco Catalyst from the 2600 series.
- C. A Cisco Catalyst from the 3500 series.
- D. A Cisco Catalyst from the 3700 series.
- E. A Cisco Catalyst from the 6500 series.
- F. A Cisco Catalyst from the 7200 series.
- G. A Cisco Catalyst from the 12000 series.

Answer: C

QUESTION 87:

You work as a network consultant at Certkiller .com. One of your clients wants to connect a LAN to a WAN.

What should you tell them?

- A. Use a bridge.
- B. Use a hub.
- C. Use a switch.
- D. Use a layer-2/3 switch
- E. Use a router.
- F. Use a gateway.

Answer: E

QUESTION 88:

What is a network that is composed of smaller local-area networks (LANs) that exist within a business campus?

- A. Campus LAN
- B. LAN campus subnet
- C. Campus wide-area network (WAN)
- D. Campus storage-area network (SAN)
- E. Campus local-area neighborhood (LAN)
- F. Campus metropolitan-area network (MAN)

Answer: A

QUESTION 89:

You work as a network consultant at Certkiller .com. One of your clients use a campus LAN.

What can be said of this LAN? (Select two)

A campus local-area network (LAN) is a network composed of smaller _____?

- A. The LAN is composed of LANs....
- B. The LAN is composed of WANs....
- C. ...that exist within a business campus.
- D. ... that connect one or more business campuses.

Answer: A,C

QUESTION 90:

You work as a network consultant at Certkiller .com. One of your clients has a campus LAN. The client asks you which area in their network is used as

A) the aggregation point distribution-area switches.

And

B) the connection point between the access and core areas

A. Application

B. Distribution

C. Convergence

D. aggregation

Answer: B

QUESTION 91:

You work as a network consultant at Certkiller .com. One of your clients has a midsize campus LAN. The client asks you which area in their network is used as

A) the aggregation point distribution-area switches.

And

B) the connection point between the LAN and the WAN.

A. Application

B. Distribution

C. Convergence

D. Core

E. Access

Answer: D

QUESTION 92:

Which component should you reduce collision issues on a large LAN?

A. host

B. switch

C. printer

D. repeater

Answer: B

QUESTION 93:

Which network components can be chained together to extend an Ethernet network over several kilometers or miles?

- A. hubs
- B. nics
- C. repeaters
- D. personal computers

Answer: C

QUESTION 94:

On which layer do switches operate?

- A. session
- B. data link
- C. application
- D. presentation

Answer: B

QUESTION 95:

What are the essential elements needed to create a LAN?

- A. NIC, hub, cables, software
- B. Cables, NIC, software, e-mail
- C. Printer, software, e-mail, NIC
- D. Software, cables, printer, NIC

Answer: A

QUESTION 96:

A consulting firm is locating 30 consultants at a client site for a nine-month project. What need does the firm have that can be met by a wireless solution?

- A. ensuring secure presentations
- B. augmenting an existing network
- C. providing a temporary network need

D. having freedom of movement within a network range

Answer: C

QUESTION 97:

Which device is used in wireless networks to send transmissions to a target area?

- A. optical fiber
- B. access point
- C. directional antenna
- D. omni-directional antenna

Answer: C

QUESTION 98:

Which interoperability standard provides a maximum speed on a wireless local-area network (WLAN) of 11 megabits per second?

- A. 802.11a
- B. 802.11b
- C. 802.11g
- D. service set identifier (SSID)

Answer: B

QUESTION 99:

Which device is installed in user devices and makes wireless connections between them and a network?

- A. router
- B. bridge
- C. access point
- D. client adapter

Answer: D

QUESTION 100:

Which open standard promotes interoperability among the wireless client adapters and

dial-in servers of various manufacturers?

- A. 802.11b
- B. service set identifier (SSID)
- C. Wired Equivalent Privacy (WEP)
- D. Extensible Authentication Protocol (EAP)

Answer: D

QUESTION 101:

Which wireless local-area network (WLAN) device is often used to make wireless connections between buildings or campuses?

- A. router
- B. bridge
- C. access point
- D. client adapter

Answer: B

QUESTION 102:

What do wireless local-area networks (WLANs) use to connect client devices, such as printers and computers?

- A. X-rays
- B. Radio waves
- C. Optical fiber
- D. Virtual Private Network (VPN) connections

Answer: B

QUESTION 103:

You work as a network consultant at Certkiller .com. One of your clients wants to connect two buildings by means of a wireless local-area network (WLAN). What WLAN device should recommend them to use?

- A. An access point
- B. A client adapter
- C. A router
- D. A bridge

E. A gateway

Answer: D

QUESTION 104:

Your Certkiller trainee Jack is configuring a wireless network. She asks you which device should be used to send directional or omni-directional signals.
What should you tell her?

- A. Client adapters
- B. Bridges
- C. Routers
- D. Antennas
- E. Access points

Answer: D

QUESTION 105:

You work as a network consultant at Certkiller .com. One of your clients asks you to select an appropriate Cisco Wireless product for their network.
Currently the 802.11a and 802.11b standards are used. These must be supported. Also, the client plans to use devices that support the 802.11g standard.
What is your recommendation?

- A. Use Aironet 550 Series
- B. Use Aironet 1100 Series
- C. Use Aironet 1200 Series
- D. None of the above alternatives meets the requirements of the client.

Answer: B

QUESTION 106:

Which interoperability standard provides a maximum speed on a wireless local-area network (WLAN) of 11 megabits per second?

- A. 802.11a
- B. 802.11b
- C. 802.11g
- D. service set identifier (SSID)

Answer: B

QUESTION 107:

You work as a network consultant at Certkiller .com. One of your clients has a 2-year project with Certkiller . You and 5 other consultants will be located at the client network during the project. You suggest that you and the other consultants should use a wireless network solution.

What advantage does your suggestion have?

- A. It provides a temporary network need.
- B. It ensures secure presentations.
- C. It provides freedom of movement within a network range.
- D. It augments an existing network.

Answer: A

QUESTION 108:

Overlapping the cells of _____ increases the network area and allows users to roam between cells while roaming connected to the network.

- A. routers
- B. bridges
- C. access points
- D. client adapters

Answer: C

QUESTION 109:

You Certkiller boss is curious about wireless networking. He asks you what network device is used to send transmissions to a target area.

What should you tell her?

- A. An directional antenna is used.
- B. An Omni-directional antenna is used.
- C. Optical fiber is used.
- D. An Access points is used.

Answer: A

QUESTION 110:

Which of the following standard has a maximum speed of 11 Mbit/s on a WLAN?

- A. 801.11a
- B. 801.11b
- C. 801.11g
- D. Service set identifier (SSID)
- E. 802.11a
- F. 802.11b
- G. 802.11g

Answer: F

QUESTION 111:

Certkiller employees meet daily in a conference room. Presentations and project updates are used at these meetings.

What benefit could Certkiller have with a wireless solution?

- A. A wireless solution would ensure secure presentations.
- B. A wireless solution would augment an existing network.
- C. A wireless solution would provide a temporary network need.
- D. A wireless solution would provide freedom of movement within a network range.

Answer: D

QUESTION 112:

What is an appropriate solution for a company whose employees work on multiple projects with different teams in different locations in the same building?

- A. High-speed access
- B. Content networking
- C. Wireless local-area network (WLAN)
- D. Internet Protocol (IP) videoconferencing

Answer: C

QUESTION 113:

Which open standard promotes interoperability among the wireless client adapters and

dial-in servers of various manufacturers?

- A. 802.11b
- B. Service set identifier (SSID)
- C. Wired Equivalent Privacy (WEP)
- D. Extensible Authentication Protocol (EAP)

Answer: D

QUESTION 114:

You work as a network consultant at Certkiller .com. You are required to provide users with wireless connections. Which network device should you install in the user devices to enable this?

- A. You should use a Access point
- B. You should use a Client adapter.
- C. You should use a switch.
- D. You should use a router.
- E. You should use a bridge.

Answer: B

QUESTION 115:

You work as a network consultant at Certkiller .com. One of your clients has recently purchased Aironet 1100 and 1200 Series components. What can these be used for?

- A. They can be used in a Metropolitan-area network (MAN)
- B. They can be used to share Internet Access.
- C. They can be used for a campus local-area network (LAN)
- D. They can be used for wireless networking.
- E. They can be used for high-speed access.

Answer: D

QUESTION 116:

An account manager should recommend a wide-area network (WAN) solution that includes universal gateways to a potential customer that _____.

- A. requires mobility for offsite personnel who work at local client locations
- B. requires collaboration between project teams at different locations around campus

- C. requires flexibility for remote workers who connect to the company from their homes
- D. has enterprise branch offices that must connect to the Internet over the Public Switched Telephone Network (PSTN)

Answer: D

QUESTION 117:

Which device collects and combines traffic from customer premises equipment (CPE) while separating signals that are going to the CPE?

- A. cable splitter
- B. cable access router
- C. digital subscriber line access multiplexer (DSLAM)
- D. Cable Modem Termination System (CMTS) equipment

Answer: C

QUESTION 118:

Which Cisco router series is the premier high-end routing platform for service-provider backbone and edge applications that support DS3 for Frame Relay?

- A. 7600 Series
- B. 10000 Series
- C. 12000 Series
- D. 15000 Series

Answer: C

QUESTION 119:

What is a wide-area network (WAN)?

- A. a network that connects client devices wirelessly using radio waves
- B. a network that crosses metropolitan, regional, or national boundaries
- C. a network that is restricted to a single building, a group of buildings, or even a single room
- D. a network that encompasses an entire city or metropolitan area and connects multiple local-area networks (LANs)

Answer: B

QUESTION 120:

Which part of a wide-area network (WAN) handles the major traffic, employs the highest-speed transmission paths in the network, and may also run the longest distance?

- A. edge
- B. backbone
- C. access point
- D. Frame Relay

Answer: B

QUESTION 121:

Dr Bill, your boss at Certkiller is curious about WANs. She asks what part of a WAN is characterized by:

- * handling most of the traffic
- * provides the highest-speed transmission paths in the network
- * Operates over the longest distance?

What should you tell her?

- A. This would be the Frame Relay.
- B. This would be the PSTN.
- C. This would be the Backbone.
- D. This would be the Access point.
- E. This would be the Edge.

Answer: C

QUESTION 122:

Which is a series of Cisco routers?

- A. 2900
- B. 3500
- C. 3600
- D. 6500

Answer: C

QUESTION 123:

As a Certkiller instructor you are required to pick the valid statement concerning WANs.

- A. A network that connects client device wirelessly using radio waves.
- B. A network that crosses metropolitan, regional, or national boundaries.
- C. A network that is restricted to a single building, a group of buildings, or even a single room.
- D. A network that encompasses an entire city or metropolitan area and connects multiple local-area networks (LANs).

Answer: B

QUESTION 124:

You work as a network consultant at Certkiller .com. One of your clients uses Frame Relay on its networks. What Cisco product would be appropriate at the small remote site belonging to this client? (Choose two)

- A. 2600 Series routers
- B. 3600 Series routers
- C. 6500 Series routers
- D. 7500 Series routers
- E. 7600 Series routers
- F. 10000 Series routers

Answer: A,B

QUESTION 125:

What are two components of a wide-area network (WAN)? Select two.

- A. video-area networks (VANs)
- B. local-area networks (LANs)
- C. security-area networks (SANs)
- D. metropolitan-area networks (MANs)

Answer: B,D

QUESTION 126:

For which markets are wide-area network (WAN) switches intended?

- A. branch office
- B. large enterprise

- C. midsize enterprise
- D. Internet service provider (ISP)

Answer: D

QUESTION 127:

Which type of address does a router need to route a message to its destination?

- A. Internet protocol (IP) address
- B. Media Access Control (MAC) address
- C. Private branch exchange (PBX) address
- D. Internetwork Operating System (IOS) address

Answer: A

QUESTION 128:

You work as a network consultant at Certkiller .com. One of your clients has a Frame Relay Network with smaller remote sites.

You are required to purchase and install routers for this network.

Which routers are best for this scenario? (Select two.)

- A. 3600 Series Cisco Routers.
- B. 2600 Series Cisco Routers.
- C. 7500 Series Cisco Routers.
- D. 7600 Series Cisco Routers.
- E. 6500 Series Cisco Routers.

Answer: A, B

QUESTION 129:

Which of the following statements is correct?

- A. 6500 is a series of Cisco routers.
- B. 7200 is a series of Cisco routers
- C. 2900 is a series of Cisco routers.
- D. 3500 is a series of Cisco routers.

Answer: B

QUESTION 130:

Which Cisco device do Internet service providers (ISPs) use to connect their customers to integrated services (data, voice, and video) and to the Internet?

- A. BPX 8600 Series
- B. MGX 8000 Series
- C. Catalyst 6500 Series
- D. AS5400 universal gateways

Answer: D

QUESTION 131:

What are RJ-45 and RJ-11?

- A. Topologies
- B. Cable specifications
- C. Twisted-pair connectors
- D. Coaxial cable connectors

Answer: C

QUESTION 132:

Which two situations are opportunities for selling a Cisco Internet Protocol (IP) telephony solution? (Choose two.)

- A. A growing publishing firm needs a secure way for remote content editors to connect through the Internet to the company extranet.
- B. An enterprise with multiple offices must provide access to large volumes of content to support a wide variety of business operations.
- C. An accounting software manufacturer wants to streamline call center operations to reduce customer wait times and improve employee productivity.
- D. A global supplier of integrated processors wants to implement specialized voice applications to increase productivity and reduce the cost of overseas toll calls.

Answer: C,D

QUESTION 133:

What ensures that voice packets are given priority throughout the network so that conversations arrive intact?

- A. QoS
- B. Centrex
- C. packet encryption
- D. intelligent call routing

Answer: A

QUESTION 134:

What distinguishes IP telephony from standard analog telephony?

- A. IP telephony uses IP addressing to provide a single dedicated path through a circuit-switched network.
- B. IP telephony uses IP addressing to enable two-way voice transmission over a packet-switched TCP/IP network.
- C. IP telephony uses TCP/IP to ensure that voice packets are given priority throughout the network so that conversations arrive intact.
- D. IP telephony uses IP addressing to establish a single dedicated path through a packet-switched network.

Answer: B

QUESTION 135:

A company is interested in using IP telephony to save money on phone communications. What must be in place before an IP telephony solution can be implemented?

- A. optical network
- B. content network
- C. storage network
- D. switched network

Answer: D

QUESTION 136:

What does an IP telephony component known as a voice application provide?

- A. connections to end-user devices, such as IP telephones
- B. voice processing when converting analog signals to digital
- C. standard telephony call processing
- D. advanced call handling, such as IP-based audio conferencing

Answer: D

QUESTION 137:

Why is QoS important in a converged network?

- A. because data does not need to arrive intact, so data transfer rates can be variable
- B. because lost voice-data packets must be retransmitted
- C. because voice data packets should arrive quickly and sequentially, and with no lost data
- D. because voice data packets must follow a single dedicated path through the network

Answer: C

QUESTION 138:

Which two Internet Protocol (IP) telephony devices are best categorized as infrastructure components? (Choose two.)

- A. IP telephones
- B. voice gateways
- C. call management software
- D. Media Convergence Servers (MCSs)

Answer: B,D

QUESTION 139:

Which two Cisco IP telephony products provide advanced call routing? (Choose two.)

- A - Cisco IPCC Enterprise Edition
- B - Cisco CallManager
- C - Cisco Unity
- D - Cisco MeetingPlace
- E - Cisco IPCC Express Edition

Answer: A, E

QUESTION 140:

Which IP telephony component provides call processing, such as signaling that in traditional voice network is provided by switching equipment, such a PBX?

- A - client-based software, such as Cisco SoftPhone
- B - voice gateways, such as the Cisco VG248 Analog Phone Gateway
- C - call-management hardware and software, such as Cisco CallManager
- D - advanced call-handling software, such as Cisco Unity

Answer: C

QUESTION 141:

You work as a network consultant at Certkiller .com. Certkiller needs call-processing services for Cisco IP client devices. Which Cisco IP telephony product or series should be used?

- A. Cisco VG248 Analog Phone Gateway
- B. Cisco 6000 Series Multiservice Switches
- C. Cisco CallManager
- D. Cisco IP Contact Center (IPCC)

Answer: C

QUESTION 142:

You work as a network consultant at Certkiller .com. One of your clients is planning to use IP Telephony. They are looking for an integrated suite of software solution that provides a flexible infrastructure for managing customer service. Which should you suggest?

- A. Use Cisco CallManager.
- B. Use Cisco IP Contact Center (IPCC).
- C. Use Cisco Conference Connection.
- D. Use Cisco Integrated Communication System (ISC) 7750.

Answer: B

QUESTION 143:

Which Internet Protocol (IP) telephony component category includes network-based

software elements that enable advanced IP telephony functions?

- A. Clients
- B. Infrastructure
- C. Call management
- D. Voice applications

Answer: D

QUESTION 144:

What supports the two-way transmission of voice traffic over a packet-switched Transmission Control Protocol/Internet Protocol (TCP/IP) network?

- A. Centrex
- B. Packet encryption
- C. Intelligent call routing
- D. Quality of service (QoS)

Answer: D

QUESTION 145:

Which Internet Protocol (IP) telephony component category includes IP telephones?

- A. Clients
- B. Infrastructure
- C. Call management
- D. Voice applications

Answer: A

QUESTION 146:

Which two Internet Protocol (IP) telephony devices are best categorized as client components? (Choose two.)

- A. IP telephones
- B. Analog phone gateways
- C. Media Convergence Servers (MCSs)
- D. IP telephony-enabled personal computers (PCs)

Answer: A,D

QUESTION 147:

Which network component includes the Cisco CallManager software?

- A. Cisco Media Convergence Server (MCS)
- B. Cisco SoftPhone
- C. Cisco internet Protocol Contact Center (IPCC)
- D. Cisco IP telephone (pass)

Answer: A

QUESTION 148:

As a Certkiller instructor you are required to select the valid statement regarding Cisco IP telephony components.

- A. Call management includes hardware and software that provides standard telephone call processing services.
- B. Call management includes voice gateways, switches, and routers.
- C. Call management includes network-based software elements that enable advanced IP telephone functions.
- D. Call management includes IP telephones that serve as end-user devices for the network.

Answer: A

QUESTION 149:

Which Internet Protocol (IP) telephony element is best categorized as a voice application component?

- A. IP telephone
- B. Voice gateway
- C. Private branch exchange (PBX)
- D. Advanced audio conferencing software

Answer: D

QUESTION 150:

Your Certkiller trainee Jack asks you which IP telephony component category includes

voice gateways, switches, and routers.

- A. Voice application
- B. Clients
- C. Infrastructure
- D. Call management

Answer: C

QUESTION 151:

You work a network administrator at Certkiller .com. Certkiller wants to use IP telephony to save money. What is a prerequisite in this scenario?

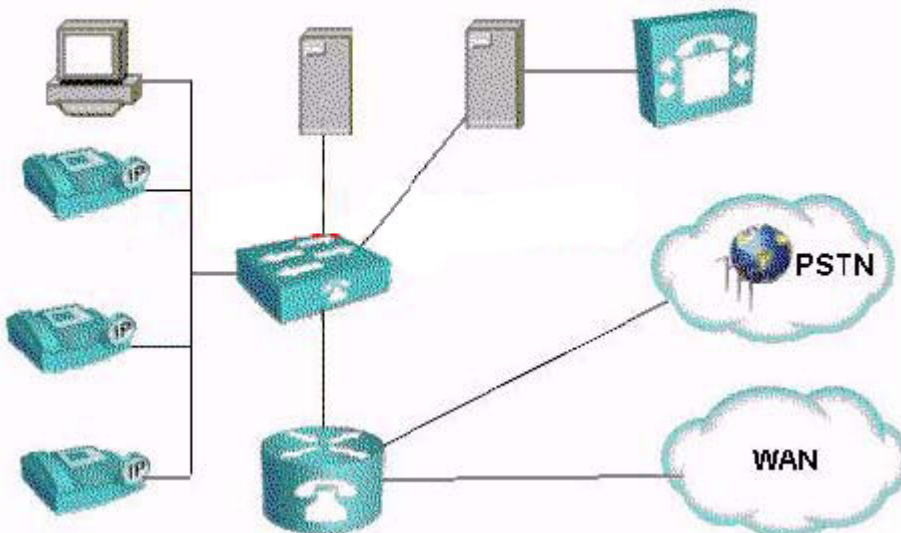
- A. A storage network must be present
- B. A switched network must be present.
- C. A routed network must be present.
- D. An optical network must be present.
- E. A content network must be present.

Answer: B

QUESTION 152:

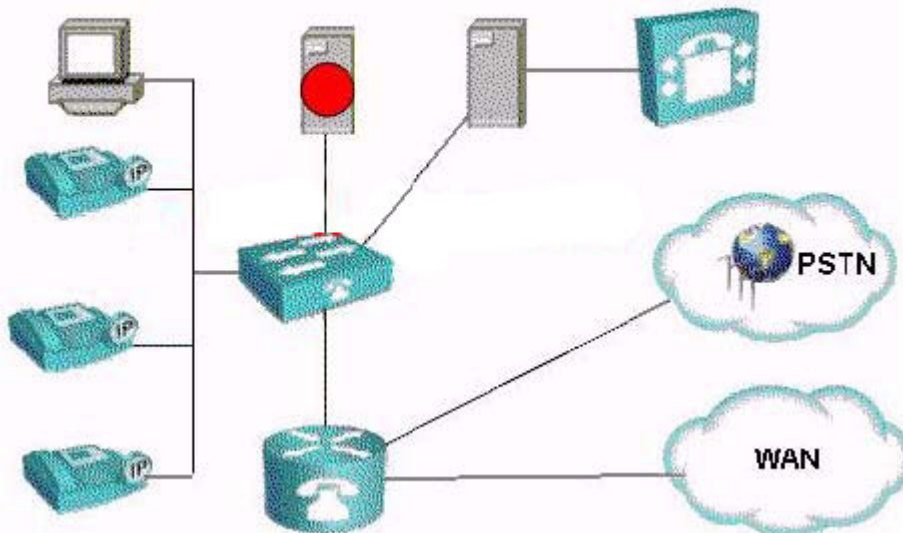
Click on the Internet Protocol (IP) telephony call management component on the network.

Click on the Internet Protocol (IP) telephony call management component on the network.



Answer:

Click on the Internet Protocol (IP) telephony call management component on the network.



QUESTION 153:

Your Certkiller trainee Jack is curious about IP telephony elements. Which of the following can be said to be a call management component?

- A. Call-processing software
- B. Private branch exchange (PBX)
- C. Voice gateway
- D. IP telephone

Answer: A

QUESTION 154:

As a Certkiller instructor you are required to select the valid statement regarding Cisco IP telephony components.

- A. Infrastructure includes hardware and software that provides standard telephone call processing services.
- B. Infrastructure includes voice gateways, switches, and routers.
- C. Infrastructure includes network-based software elements that enable advanced IP telephone functions.
- D. Infrastructure includes IP telephones that serve as end-user devices for the network.

Answer: B

QUESTION 155:

A global manufacturer of automobile parts wants to implement specialized voice applications to increase productivity and reduce the cost of overseas toll calls. Which Cisco solution best matches this business need?

- A. Optical network
- B. Digital subscriber line (DSL)
- C. Internet Protocol (IP) telephony
- D. Wireless local-area network (WLAN)

Answer: C

QUESTION 156:

As a Certkiller instructor you are required to select the valid statement regarding Cisco IP telephony components.

- A. Client includes hardware and software that provides standard telephone call processing services.
- B. Client includes voice gateways, switches, and routers.
- C. Client includes network-based software elements that enable advanced IP telephone functions.
- D. Client includes IP telephones that serve as end-user devices for the network.

Answer: D

QUESTION 157:

You work as an account manager at Certkiller .com. Certkiller plan to migrate to an advanced IP telephony solution. However, they are concerned about maintaining staff productivity during the migration process.

What Cisco service and support portfolio should you recommend? Also motivate the selection. (Select two.)

- A. Usage of Advanced Services....
- B. Usage of Technical Service and Support....
- C. Usage of Advisory Services....
- D. ...because a key component provides software upgrades that maximize network reliability.
- E. ...because a key component helps organization align business requirements with network availability.

- F. ...because of the portfolio's focus on providing customers with Cisco IP expertise.
- G. ... because a key component provides online tools and support.

Answer: A,E

QUESTION 158:

Your Certkiller trainee Jack asks you which IP telephony component category include IP telephones.

- A. Call management
- B. Clients
- C. Voice application
- D. Infrastructure

Answer: B

QUESTION 159:

You work as a network consultant at Certkiller .com. One of your clients has a packet-switched Transmission Control Protocol/Internet Protocol (TCP/IP) network. Now they want use two-way transmission of voice traffic. What should you tell the client? Select two.

- A. Two-way voice transmission is not possible in this scenario.
- B. Quality of service (QoS) should be used.
- C. IP addressing should be used.
- D. Virtual local-area network (VLAN) should be used.
- E. Multicasting should be used.

Answer: B,C

QUESTION 160:

You work as a network consultant at Certkiller .com. One of your clients wants to connect an IP network and a legacy communication system to the Public Switched Telephone network (PSTN). What should you tell the client?

- A. Use Cisco VG248 Analog Phone Gateway.
- B. Use Cisco 7800 Series Media Convergence Server (MCS).
- C. Use Cisco CallManager.
- D. Use Survivable Remote Site Telephony (SRST).

Answer: A

QUESTION 161:

Which Cisco Internet Protocol (IP) telephony product or series is a Windows-based application for the personal computer (PC) that supports end-user client functions, including the integration of contact directories and a drag-and-drop interface for conference calling?

- A. Cisco SoftPhone
- B. Cisco CallManager
- C. Cisco Conference Connection
- D. Cisco Internetwork Operating System (IOS)

Answer: A

QUESTION 162:

You work as a network consultant at Certkiller .com. One of your clients is considering migrating to an IP telephony solution.

What would an advantage for the client if they migrate?

- A. IP telephony creates an encrypted tunnel for voice through a Transmission Control Protocol (TCP/IP) network.
- B. IP telephony enables two-way voice transmission over a packet-switch TCP/IP network.
- C. IP telephony eliminates the need for physical cabling in a TCP/IP network.
- D. IP telephony synchronizes password exchanges for call setup

Answer: B

QUESTION 163:

A software engineering firm wants to streamline call center operations to reduce customer wait times and improve employee productivity.

Which Cisco solution best matches this business need?

- A. Storage-area network (SAN)
- B. Digital subscriber line (DSL)
- C. Internet Protocol (IP) telephony
- D. Wireless local-area network (WLAN)

Answer: C

QUESTION 164:

As a Certkiller instructor you are required to select the valid statement regarding Cisco IP telephony components.

- A. Voice applications includes hardware and software that provides standard telephone call processing services.
- B. Voice applications includes voice gateways, switches, and routers.
- C. Voice applications includes network-based software elements that enable advanced IP telephone functions.
- D. Voice applications includes IP telephones that serve as end-user devices for the network.

Answer: C

QUESTION 165:

You work as a network consultant at Certkiller . Your client wants to run voice traffic over the existing frame relay network, but is not prepare to deploy to IP telephone at this point?

What network hardware you recommend to this request?

- A. Call Manger
- B. Voice gatekeeper
- C. Voice Gatekeeper
- D. Multicultural unit
- E. Frame relay access Device

Answer: E

QUESTION 166:

What is the benefit if a network built using Cisco AVVID?

- A. High availability through software and equipment that is configured for protocol transfer.
- B. Interoperability through software and equipment that is configured for seamless operation.
- C. Improved scalability through software and equipment that is configured for the maximum port density.

D. Greater performance through software and equipment that is configured to achieve seamless roaming.

Answer: B

QUESTION 167:

Which two Internet Protocol (IP) telephony devices are best categorized as infrastructure components? (Choose two)

- A. IP telephones
- B. Voice gateways
- C. Call management software
- D. Media Convergence Servers (MCSs)

Answer: B, D

QUESTION 168:

A growing publishing firm needs a secure way for remote content editors to connect through the Internet to the company extranet. Which Cisco solution best matches this business need?

- A. IP telephony
- B. wireless network
- C. content networking
- D. Virtual Private Network (VPN)

Answer: D

QUESTION 169:

A large medical center faces government regulations regarding the privacy and protection of electronic transactions containing personal patient healthcare information. Which Cisco solution best matches this business need?

- A. network security
- B. optical networking
- C. storage-area network (SAN)
- D. content delivery network (CDN)

Answer: A

QUESTION 170:

Which two scenarios are opportunities for selling a Cisco VPN solution? (Choose two.)

- A. an online music retailer with multiple downloading locations that wants to centralize access to large media files
- B. a growing publishing firm that needs a secure way for remote content editors to connect through the Internet to the company extranet
- C. a large ISP that has been targeted by a denial of service attack that disables Internet access for several thousand customers
- D. a mortgage-lending company that opens several branch offices that require secure access to underwriting information on the corporate extranet

Answer: B,D

QUESTION 171:

What is the purpose of authentication components in a network security solution?

- A. to validate the identity of users who connect to the network
- B. to block unwanted connections and content from both internal and external sources
- C. to create virtual connections between validated remote users and a private network
- D. to limit the availability of network resources by defining the usage privileges of authorized users

Answer: A

QUESTION 172:

What strategy will protect network resources and services from unauthorized actions?

- A. network security
- B. network management
- C. collaborative networking
- D. content storage networking

Answer: A

QUESTION 173:

What is an attack that occurs when a string of unnecessary commands or requests is sent to a network device?

- A. virus
- B. worm
- C. data interception
- D. denial of service (DoS)

Answer: D

QUESTION 174:

What is the most commonly used encryption technology?

- A. 802.11g
- B. service set identifier (SSID)
- C. Wired Equivalent Privacy (WEP)
- D. Extensible Authentication Protocol (EAP)

Answer: C

QUESTION 175:

Which software-based security threat is typically spread from user to user via e-mail?

- A - virus
- B - Trojan horse
- C - denial of service
- D - data interception

Answer: A

QUESTION 176:

Doug, your Certkiller .com trainee, asks you why authentication is a part of a network security solution. What should you tell Doug?

- A. Authentication is used to create virtual connections between validated remote users and a private network.
- B. Authentication is used to block unwanted connections and content from both internal and external sources.
- C. Authentication is used to validate the identity of users who connect to the network.
- D. Authentication is used to limit the availability of network resources by defining the

usage privileges of authorized users.

Answer: C

QUESTION 177:

A growing publishing firm needs a secure way for remote content editors to connect through the Internet to the company extranet.

Which Cisco solution best meets this business need?

- A. IP telephony
- B. Wireless network
- C. Content networking
- D. Virtual Private Network (VPN)

Answer: D

QUESTION 178:

As a Certkiller instructor you are required to select the valid statement.

- A. Authentication validates the identity of remote users who connects to a private network.
- B. Authentication creates virtual connections between remote users and a private network.
- C. Authentication blocks unwanted connections and content from external users.
- D. Authentication limits the availability of network resources to remote users.

Answer: A

QUESTION 179:

What are two software-based attacks that disable individual workstations and typically spread from user to user by e-mail? (Choose two)

- A. Worm
- B. Virus
- C. Trojan
- D. Executable

Answer: A,B

QUESTION 180:

As a Certkiller instructor you are required to select the valid statement.

- A. Access control validates the identity of remote users who connects to a private network.
- B. Access control creates virtual connections between remote users and a private network.
- C. Access control blocks unwanted connections and content from external users.
- D. Access control limits the availability of network resources to remote users.

Answer: A

QUESTION 181:

As a Certkiller instructor you are required to select the valid statement.

- A. Virtual Private Networking (VPN) Tunneling validates the identity of remote users who connects to a private network.
- B. Virtual Private Networking (VPN) Tunneling creates virtual connections between remote users and a private network.
- C. Virtual Private Networking (VPN) Tunneling blocks unwanted connections and content from external users.
- D. Virtual Private Networking (VPN) Tunneling limits the availability of network resources to remote users.

Answer: B

QUESTION 182:

Which network security strategy element refers to actions taken to evaluate the effectiveness of overall protections and to identify new vulnerabilities?

- A. Test the system
- B. Analyze and improve
- C. Monitor and respond
- D. Develop security policy

Answer: A

QUESTION 183:

Your Certkiller trainee Jack asks you to describe Virtual Private Networking. What should you tell her?

- A. VPN is an encrypted connection between endpoints.
- B. VPN is a remote client that is attached to a private network by an optical link.
- C. VPN is an Internet-based website that requires the user to submit a password to gain entrance.
- D. VPN is a connection that relies on synchronized password exchanges between the network and the user.

Answer: A

QUESTION 184:

Certkiller .com sets up a joint venture with a community collage. Community collage instructors are required to connect to the Certkiller intranet.

Which solution, in the context of Cisco solutions, should be used?

- A. Use IP telephony.
- B. Use Virtual Private Network (VPN)
- C. Use Content delivery network (CDN)
- D. Use Remote access (RAS).
- E. Use Storage-area network (SAN)

Answer: B

QUESTION 185:

You work as a network consultant at Certkiller .com. You are securing a network for a client. You implement physical and virtual barriers in order to protect the network.

What network security element corresponds to this activity?

- A. Monitor and respond
- B. Develop security policy
- C. Test the system
- D. Secure the network

Answer: D

QUESTION 186:

Which security function is performed in the server farm model of enterprise composite network model?

- A. Port security
- B. Packet filtering
- C. Private VLAN
- D. AAA control

Answer: B

QUESTION 187:

Someone sends strings of pointless commands to a network device.
What is occurring?

- A. A virus attack.
- B. A worm attack.
- C. Data interception attack.
- D. A Denial of service (DoS) attack.

Answer: D

QUESTION 188:

Which network component blocks unwanted connections and content from both internal and external sources?

- A. Extranet
- B. Firewall
- C. Access control
- D. Virtual Private network (VPN) tunnel

Answer: B

QUESTION 189:

You work as a network consultant at Certkiller .com. One of your clients, a drug rehab clinic, is required to protect the electronic transactions that include personal patient healthcare information, in order to guard the privacy of the patients.
What Cisco solution should you use?

- A. Use Storage-area network (SAN)
- B. Use network security
- C. Use Content delivery network (CDN)
- D. Use optical networking

Answer: B

QUESTION 190:

As a Certkiller instructor you are required the name the encryption technology that is most frequently used.

- A. Extensible Authentication Protocol (EAP)
- B. Service set identifier (SSID)
- C. MS-CHAP
- D. Wired Equivalent Privacy (WEP)
- E. 802.11g

Answer: D

QUESTION 191:

As a Certkiller instructor you are required to select the valid statement.

- A. A firewall validates the identity of remote users who connects to a private network.
- B. A firewall creates virtual connections between remote users and a private network.
- C. A firewall blocks unwanted connections and content from external users.
- D. A firewall limits the availability of network resources to remote users.

Answer: C

QUESTION 192:

Which Cisco product is a stand-alone hardware component that blocks unwanted connections to the network?

- A. Cisco Firewall Services Module (FWSM)
- B. Cisco Private Internet Exchange (PIX) Firewall
- C. Cisco Internetwork Operating System (IOS) Firewall
- D. Cisco Virtual Private Network/Security Management Solution (VMS)

Answer: B

QUESTION 193:

You work at Certkiller , a network service provided. Certkiller needs to prevent DoS

(Denial of Service) attacks that previously had disabled Internet access for many clients. What Cisco solution would fit this scenario best?

- A. Wireless network
- B. Virtual Private Network (VPN)
- C. Network Service provider
- D. Content networking

Answer: C

QUESTION 194:

You work at Certkiller . The company wants to protect network services and resources. Which strategy should be used by Certkiller in this scenario?

- A. Collaborative networking
- B. Content storage networking
- C. Network security
- D. Network management

Answer: C

QUESTION 195:

Your boss at Certkiller is concerned about the privacy and integrity of transmitted information. She asks you which network security threat is relevant to these concerns. What should you tell her?

- A. Denial of Service attacks
- B. Lost password
- C. Link fault error
- D. E-mail virus
- E. Data interception
- F. Hoaxes

Answer: E

QUESTION 196:

You work at Certkiller . The company has recently had problems with an intruder that has made several failed login attempts. Which network security strategy element should be used by Certkiller in this scenario?

- A. Secure the network.
- B. Monitor and respond.
- C. Develop security policy.
- D. Test the system.

Answer: B

QUESTION 197:

You work as a network consultant at Certkiller . The company wants to provide gateway security, including blocking of unwanted connected, for a small business. Which Cisco product software component would apply in this scenario?

- A. Cisco Firewall Service Module (FWSM)
- B. Cisco Internetwork Operating System (IOS) Firewall
- C. Cisco Secure Access Control Server (ACS)
- D. Cisco Private Internet Exchange (PIX) Firewall

Answer: B

QUESTION 198:

What best characterizes Cisco Security Monitoring?

- A. It is used to secure the network.
- B. It is used to monitor and respond.
- C. It is used to develop security policies.
- D. It is used to test the system

Answer: B

QUESTION 199:

A partnership between an architectural firm and an engineering consulting company requires a network-to-network connection to boost productivity and prevent interception of proprietary information. Which Cisco solution best meets this business need?

- A. IP Telephony
- B. Storage-area network (SAN)
- C. Virtual Private Network (VPN)
- D. Content delivery networking (CDN)

Answer: C

Explanation:

Business Example: Remote Partners

Cisco.com



- An architectural firm based in Rome partners on construction proposals with an engineering consulting group with offices in Toronto and Los Angeles.
- The partnership requires daily exchanges of blueprints and project information.
- A secure, cost-effective, network-to-network connection is needed to boost productivity and prevent interception of proprietary information by outside sources.

QUESTION 200:

Which network technology addresses these customer business needs: shrinking budgets and IT staffs, more complex networks, and an increased need for network security?

- A. optical network
- B. network management
- C. storage-area network (SAN)
- D. content delivery network (CDN)
- E. wireless local-area network (WLAN)

Answer: B

QUESTION 201:

Certkiller Inc. wants to implement network management in order to save money and time to automate some tasks. Which two statements are valid? (Choose two)

- A. Network Management automates the process of monitoring online purchasing.
- B. Network Management automates the process of monitoring user access to storage files.
- C. Network Management automates the process of configuring changes to hardware and software.
- D. Network Management automates the process of monitoring and troubleshooting

network devices.

Answer: C, D

QUESTION 202:

A growing enterprise wants to automate and simplify the diagnosis of network problems at branch offices. Which networking solution should they consider implementing?

- A. high-speed access
- B. network management
- C. Virtual Private Network (VPN)
- D. content delivery network (CDN)

Answer: B

QUESTION 203:

Your Certkiller trainee is curious about Cisco Works RWAN network management. What should you tell him? (Choose two)

- A. It can be used to centrally manages QoS policies.
- B. It can be used to manage VPN connections.
- C. It can be used to provide remote access to users.
- D. It can be used to troubleshoot performance "bottlenecks".
- E. It can be used to configure use across network links.
- F. It can be used to troubleshoot LAN devices.

Answer: D,E

QUESTION 204:

You work as a network consultant at Certkiller . One Certkiller client has the following requirements: WAN monitoring Traffic management Access control to administer a routed network build on Cisco devices

You are required to recommend a Cisco product for this client. What would you recommend?

- A. A Catalyst LMS
- B. A CiscoWorks Routed WAN (RWAN)
- C. A CiscoWorks LAN Management Solution (LMS)
- D. An Aironet WAN 2000

Answer: B

QUESTION 205:

Which network technology allows for the monitoring of active communication networks to diagnose problems and gather statistics for network administration?

- A. network security
- B. content networking
- C. network management
- D. campus local-area network

Answer: C

QUESTION 206:

You work as a network consultant at Certkiller .com. One of your clients wants to improve the handling of network problems at the regional offices. In particular they want to simply and automate this task.

What should you tell them?

- A. Use Virtual Private Network (VPN).
- B. Use Network management.
- C. Use Frame Relay.
- D. Use Content delivery network (CDN).
- E. Use High-speed access.

Answer: B

QUESTION 207:

Which CiscoWorks network management solution provides end-to-end quality of service (QoS) for enterprise networks with converged voice, video, and data?

- A. VMS
- B. LMS
- C. QPM
- D. RWAN

Answer: C

QUESTION 208:

SMARTnet and SMARTnet Onsite provide which two services? (Choose two.)

- A. updates to all Cisco software
- B. support for Cisco IOS software
- C. registered access to Cisco.com
- D. support for application software such as Cisco CallManager

Answer: B,C

QUESTION 209:

What does the Cisco Technical Support Services portfolio provide customers?

- A. resources that help ensure that Cisco products operate efficiently, remain highly available, and benefit from up-to-date system software
- B. consultation that helps customers benefit from Cisco internal best practices, Internet Protocol (IP) expertise, and networking experience
- C. consultation that helps customers identify third-party software and equipment that enables their business applications to meet their own specific business goals
- D. a unified suite of professional engineering support offerings that helps customers ensure their networks can support the latest network applications and technologies

Answer: A

QUESTION 210:

Which two best describe the benefits of a Cisco warranty? (Choose two.)

- A. entitlement to software updates
- B. replacement of hardware if it malfunctions within a year
- C. access to resources on Cisco.com
- D. software support for bugs and defects for 90 days

Answer: B,D

QUESTION 211:

SAS and SASU provide which two services? (Choose two.)

- A - online support
- B - replacement of hardware
- C - on site support
- D - maintenance updates

Answer: A, D

QUESTION 212:

Which three are standard Cisco warranties? (Choose three)

- A. Full lifetime hardware warranty.
- B. Standard 90-day hardware and software warranty.
- C. End-user software license agreement and software warranty.
- D. Five-year limited hardware and one-year limited software warranty.

Answer: A,B,C

QUESTION 213:

You work as a network consultant at Certkiller .com. One of your clients has opted for Cisco Advisory Services. What would this provide?

- A. It would provide consultation that helps customers benefit from Cisco internal best practices, Internet Protocol (IP) expertise, and networking experience.
- B. It would provide a unified suite of professional engineering support offerings that helps customers ensure their networks can support the latest network applications and technologies.
- C. It would provide resources that help ensure that Cisco products operate efficiently, remain highly available, and benefit from up-to-date system software.
- D. It would provide consultation that helps customers identify third-party software and equipment that enables their business applications to meet their own specific business goals.

Answer: A

QUESTION 214:

A situation in which the existing network is severely degraded, or significant aspects of the customer's business operation are being negatively impacted by unacceptable network performance most closely corresponds to which priority level?

- A. Priority Level 1
- B. Priority Level 2
- C. Priority Level 3
- D. Priority Level 4

Answer: B

QUESTION 215:

Limited TAC support is available under which warranty option?

- A. 90-day limited hardware warranty.
- B. 1 year limited hardware warranty.
- C. 5 year limited hardware and 1 year limited software warranties.
- D. Limited lifetime hardware warranty.

Answer: A

QUESTION 216:

Which Cisco Technician Service and Support program offers service providers with the support they need to keep their networks running? Select all that apply.

- A. SASE
- B. SPBase
- C. SMARTnet
- D. Shared Support

Answer: A,C

QUESTION 217:

You work as a network consultant at Certkiller .com. One of your clients has access to the Cisco Technical Support Services portfolio.

What will be provided to the customer?

- A. A unified suite of professional engineering support offerings that helps customers ensure their network can support that latest network applications and technologies.
- B. Consultation that helps customers identify third-party software and equipment that enables their business applications to meet their own specific business goals.
- C. Resources that help ensure that Cisco products operate efficiently, remain highly available, and benefit from up-to-date system software.

D. Consultation that helps customers benefit from Cisco internal best practices, Internet Protocol (IP) expertise, and networking experience.

Answer: C

QUESTION 218:

A typical service contract provides advance replacement of hardware the next business day.

Under most warranties, advance replacement shipping is provided within _____ business days from the Return Material's Authorization (RMA).

- A. 3
- B. 7
- C. 10
- D. 14

Answer: C

QUESTION 219:

What is the minimum number of days Cisco hardware and software products are covered under warranty?

- A. 30
- B. 60
- C. 90
- D. 120

Answer: C

QUESTION 220:

Without a service contract that supports the refresh of Cisco IOS software, what must customers do?

- A. use an alternative to Cisco IOS software
- B. purchase releases, enhancements, or updates separately
- C. find a network application software that can perform the same functions
- D. call the Cisco Technical Assistance Center (TAC) to obtain releases, enhancements, or upgrades

Answer: B

QUESTION 221:

Why is the "follow-the-sun" model important?

- A. Some countries provide better support than others.
- B. Customers can work with their favorite Support Engineer.
- C. Customers can communicate with Cisco in the same hemisphere.
- D. Customers can get support 24 hours a day, seven days a week, regardless of their location.

Answer: D

QUESTION 222:

Your customer has a service program that provides 8x5xNBD advance replacement of hardware.

Once your customer calls the Cisco Technical Assistance Center (TAC) to request the service, what is the cut off time that the call must be received by to deploy parts the next business day?

- A. 1 p.m. local time
- B. 2 p.m. local time
- C. 3 p.m. local time
- D. 4 p.m. local time

Answer: C

QUESTION 223:

What is a typical obstacle that unsupported customers may experience?

- A. fewer priority level options
- B. inability to escalate non-technical issues
- C. re-routing to outsourced technical support agents
- D. lower priority in the call queue when escalating to the Cisco Technical Assistance Center (TAC)

Answer: D

QUESTION 224:

What is a Cisco warranty?

- A. the company's assurance that new parts will be delivered to the customer in fewer than ten business days
- B. the company's promise to customers that Cisco will be responsible for all repair and replacement of products at the customer's site.
- C. the company's assurance that the company will be responsible for the repair and replacement of defective parts associated with equipment for an unlimited period of time.
- D. the Cisco promise to customers that Cisco will be responsible for the repair and replacement of defective parts associated with equipment during a designated (finite) period of time.

Answer: D

QUESTION 225:

Which three are benefits of advance replacement? (Choose three)

- A. It saves customers time.
- B. Customers receive the latest software releases.
- C. Customers do not incur costs associated with warehousing and inventory management.
- D. It gives immediate access to a technical expert who can quickly diagnose and resolve hardware issues.

Answer: A,C,D

QUESTION 226:

Which city is the location of one of Cisco's four main Technical Assistance Centers (TACs)?

- A. Tokyo, Japan
- B. Houston, USA
- C. Brussels, Belgium
- D. Moscow, Russia
- E. New York City, USA

Answer: C

QUESTION 227:

The Cisco advance replacement service relies on a global infrastructure of depots located in _____.

- A. one central location
- B. a handful of US locations
- C. hundreds of locations around the world
- D. a few locations called distribution centers

Answer: C

QUESTION 228:

You work as a network consultant at Certkiller .com. One of your clients has access to the Cisco Advanced Services.
What will be provided to the customer?

- A. Resources that help ensure that Cisco products operate efficiently, remain highly available, and benefit from up-to-date system software.
- B. A unified suite of professional engineering support offerings that helps customers ensure their network can support that latest network applications and technologies
- C. Consultation that helps customers identify third-party software and equipment that enables their business applications to meet their own specific business goals.
- D. Consultation that helps customers benefit from Cisco internal best practices, Internet Protocol (IP) expertise, and networking experience.

Answer: B

QUESTION 229:

In addition to telephone assistance, where can customers receive assistance from the Cisco Technical Assistance Center (TAC)?

- A. The Cisco TAC website.
- B. Their Service Account Manager (SAM).
- C. Industry-leading Cisco technical journals.
- D. The Help feature within the Cisco Bug Toolkit.

Answer: A

QUESTION 230:

Technical assistance is provided to customers who _____.

- A. are logistics experts
- B. are senior executives

- C. have product sales teams
- D. hold a valid service contract with Cisco or a qualified Cisco partner

Answer: D

QUESTION 231:

Which two characteristics of optical networks allow data to be transmitted over extremely long distances? (Choose two.)

- A. no encryption
- B. minimal signal loss
- C. no bandwidth limits
- D. no electromagnetic interference (EMI)

Answer: B, D

QUESTION 232:

A film production studio is considering an optical networking solution to streamline operations. Which two customer business needs does optical network technology address? (Choose two.)

- A. ensures the secure transfer of digitized film backups to an offsite storage facility
- B. eliminates the need to transfer digitized film backups to an offsite storage facility
- C. reduces the costs of online collaboration between screenwriters and special effects coordinators
- D. enables high-speed transfer of digitized video between the special effects and editing departments

Answer: A, D

QUESTION 233:

Which technology provides the fastest and most reliable way to synchronize information between a primary and standby data center as a strategy to provide disaster recovery?

- A. optical network
- B. offsite content storage
- C. digital subscriber line (DSL)
- D. Virtual Private Network (VPN)

Answer: A

QUESTION 234:

What are two benefits of an optical networking solution? (Choose two)

- A. Supports bandwidth on demand.
- B. Provides support for mobile workers.
- C. Increases network transmissions speeds.
- D. Offers simple installation and configuration.

Answer: A, C

QUESTION 235:

You work as a network consultant at Certkiller .com. One of your clients has the requirement to use a physical media that is most resistant to signal interference. What should you tell the client?

- A. Use Coaxial cable
- B. Use PSTN
- C. Use Optical fiber
- D. Use 1000BaseT
- E. Use Twisted pair
- F. Use Shielded Twisted Pair

Answer: C

QUESTION 236:

You work as a network consultant at Certkiller .com. One of your clients needs a synchronous data mirroring solution.

What Cisco transport product would be the most appropriate?

- A. 5400 Storage Router Series
- B. ONS 15000 Series
- C. MDS 9000 Family
- D. ICS 7750

Answer: B

QUESTION 237:

Which benefit does storage networking provide?

- A. access to backup data
- B. rapid access to rich media used in online training
- C. firewall protection for storage-area networks (SANs)
- D. network redundancy to ensure file access in branch offices

Answer: A

QUESTION 238:

What is storage networking?

- A. optical storage networks based on the Fibre Channel protocol
- B. hardware and software that deliver rich media to the network edge
- C. hardware and software that unite multiple server-based storage areas
- D. a storage array attached to a server using a Small Computer Systems Interface (SCSI)

Answer: C

QUESTION 239:

What are two reasons organizations should use storage networking solutions? (Choose two.)

- A. Transaction data for the week are successfully downloaded and stored at an offsite facility.
- B. Employees are notified to close applications when network congestion threatens online purchasing.
- C. Online transactions can be recovered in the event the network is disrupted by a computer virus attack.
- D. The company has an uncorrupted record of financial transactions even in the event of a fire at the primary data center.

Answer: C,D

QUESTION 240:

Which Cisco product provides network services that include management of virtual storage-area networks (VSANs), advanced traffic management, and sophisticated diagnostics?

- A. ICS 7750
- B. MDS 9000 Family
- C. ONS 15000 Series
- D. 5400 Storage Router Series

Answer: B

QUESTION 241:

You show your boss at Certkiller the current storage solution used by the company. A SCSI interface connects the file server with discs in a storage cabinet. She asks you what this storage solution is called. What should you tell her?

- A. It is called RAID-5.
- B. It is called Storage-area networks (SANs).
- C. It is called Network-attached storage (NAS).
- D. It is called Direct-attached storage (DAS).
- E. It is called Storage networking.

Answer: D

QUESTION 242:

You work as a network consultant at Certkiller .com. You have recommend one of your clients to use as storage networking solution. What advantages would the solution provide to the client? (Choose two)

- A. It would increase utilization in direct-attached storage (DAS) arrays.
- B. It would provide higher availability for network-attached storage (NAS).
- C. It would reduce congestion in Fibre Channel storage-area networks (SANs).
- D. It would enable access to data across the network regardless of server type.

Answer: C,D

QUESTION 243:

You work as a network consultant at Certkiller .com. You have suggested that Certkiller should use a storage networking solution. Your boss wants you to motivate your suggestion. What should you tell him?

- A. Certkiller Staff would be notified to close applications when network congestion

threatens online purchasing.

B. Certkiller transaction data for the week are successfully downloaded and stored at an offsite facility.

C. Certkiller would have an uncorrupted record of financial transactions even in the event of a flooding at the primary data center.

D. Certkiller would be able to recover online transactions if the network would be disrupted by a computer virus attack.

Answer: C,D

QUESTION 244:

What are two business benefits of storage networking solutions? (Choose two)

A. Cash flows from online business transactions will improve.

B. Network availability will be improved though load balancing.

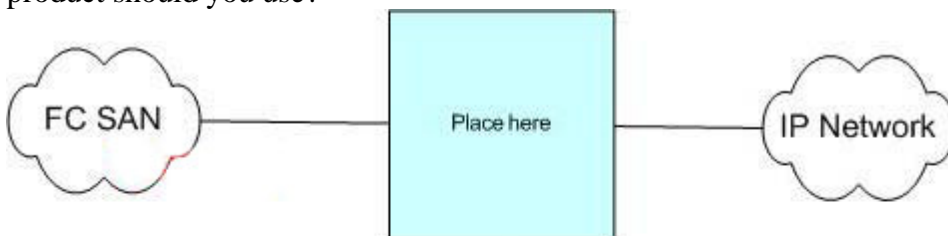
C. IT staffs will be able to centralize network management functions.

D. Business will be able to recover from "man-made" or natural disasters.

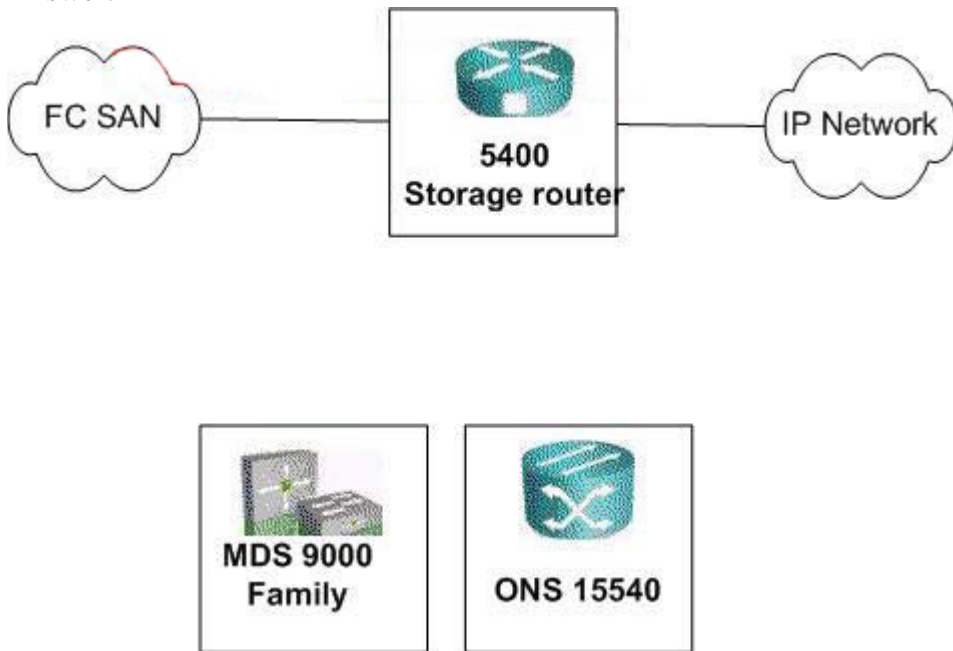
Answer: B,D

QUESTION 245:

You work as a network consultant at Certkiller .com. You are required to select a Cisco Hardware device to connect two network components in the Certkiller network. Which product should you use?



Answer:



QUESTION 246:

You work as a network consultant at Certkiller .com. One of your clients is planning to increase productivity. The steps they plan are:
deploy new multiservice applications
deploy collaborative online design workshops
use web-enable call centers
use real-time distance learning
What should you tell the client?

- A. Use Wireless local-area network (WLAN)
- B. Use VPN.
- C. Use Internet Protocol (IP) telephony
- D. Use Network security (pass)
- E. Use Storage-area network (SAN)

Answer: E

QUESTION 247:

Content networking solutions improve access to which two types of content? (Choose two.)

- A. media-rich e-learning
- B. real-time financial system reports

- C. text-based enterprise e-mail distribution
- D. video presentations from corporate leaders

Answer: A,D

QUESTION 248:

Which content network component is primarily used to store and deliver content from the network edge?

- A. content switch
- B. content router
- C. content engine
- D. Content Distribution Manager (CDM)

Answer: C

QUESTION 249:

Which content network component maintains original source content and publishes content to the network edge?

- A. content switch
- B. content router
- C. content engine
- D. Content Distribution Manager (CDM)

Answer: D

QUESTION 250:

Certkiller provides content networks to service providers. One service provider requires the content network to maintain the origin source content. The content must also be published on the network edge. Which network component handles these two issues?

- A. The content switch
- B. The content Distribution Manager (CDM)
- C. The content router
- D. The content engine

Answer: B

QUESTION 251:

What are two primary advantages of content networking solutions? (Choose two)

- A. Increased WAN traffic.
- B. Reduced content access time.
- C. Optimized network resource use.
- D. End user control over content access and delivery.

Answer: B, C

QUESTION 252:

You work as a network consultant at Certkiller .com. One of your clients processes a large amounts of customer requests, delivers a considerable amount of large multimedia files to these customers.

You are now required to optimise performance for this client.

Which networking technology should you recommend?

- A. Virtual Private Network (VPN)
- B. Multi-tier
- C. Content networking
- D. Network management
- E. Client-Server
- F. Wireless local-area network (WLAN)

Answer: C

QUESTION 253:

Certkiller provide content networks to service providers. Which of the following statements are correct?

- A. The service providers are able to receive bandwidth costs that shift to the user end of the network.
- B. The service providers receive more control over delivery of content to users.
- C. The service providers are able to receive bandwidth costs that shift to the core end of the network.
- D. The service providers receive content routing that centralizes content at the server farm.

Answer: A

QUESTION 254:

Which advantages does content networking provide? (Select two)

- A. It improves access to real-time financial system reports.
- B. It improves access to media-rich e-learning.
- C. It improves access to video presentation from corporate leaders.
- D. It improves access to the Internet
- E. It improves access to text-based enterprise e-mail distribution.

Answer: B, C

QUESTION 255:

You Certkiller trainee Jack is curious about storage and delivery of content at the network edge. She asks you which network component is above all used for this purpose. What should you tell her?

- A. This is the primary purpose of a content hub.
- B. This is the primary purpose of a content router.
- C. This is the primary purpose of a content switch.
- D. This is the primary purpose of a content engine.
- E. This is the primary purpose of a content Distribution Manager (CDM).

Answer: D

QUESTION 256:

Which networking technology optimizes that processing of requests for and delivery of popular web and rich-media content files to sources that are closer to the user?

- A. content networking
- B. network management
- C. Virtual Private Network (VPN)
- D. wireless local-area network (WLAN)

Answer: A

QUESTION 257:

Which content network component provides fault tolerance, scalability, and load balancing?

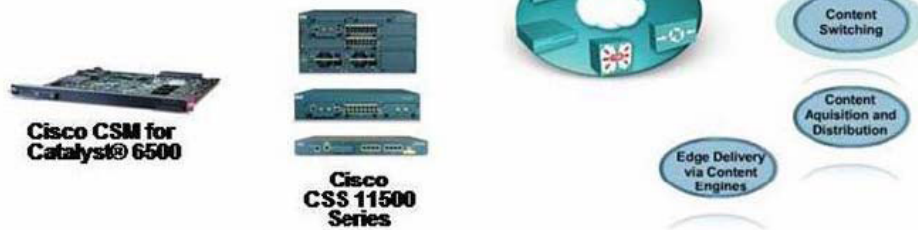
- A. Content switch
- B. Content router
- C. Content engine
- D. Content Distribution Manager (CDM)

Answer: A

Cisco Content Switches

Cisco.com

- Provide fault tolerance and scalability of critical data and applications
- Balance the load across multiple servers and distributed data centers to provide high availability and best possible response time to the requester
- Ensure high-integrity and high-performance transactions via Secure Socket Layer (SSL) acceleration
- Customize transaction handling to match business priorities



QUESTION 258:

What are two appropriate uses for Internet Protocol TV broadcasting (IP/TV) technology? (Choose two.)

- A. enabling online collaboration among research personnel
- B. delivering a strategic business update from the CEO to all personnel
- C. enabling an interactive virtual classroom for sales personnel in remote locations
- D. delivering information about changes in health benefit enrollment to all personnel

Answer: B,D

QUESTION 259:

What are two appropriate uses for Internet Protocol videoconferencing (IP/VC) technology? (Choose two.)

- A. delivering a live, annual financial report to all employees
- B. delivering a program about company restructuring to staff at multiple global sites

- C. facilitating online collaboration by a team of engineers using a "whiteboard" application
- D. creating an interactive virtual classroom for instructors and students located in different locations

Answer: C,D

QUESTION 260:

Internet Protocol TV broadcasting (IP/TV) is appropriate for which two business scenarios? (Choose two.)

- A. a pharmaceutical organization that wants to provide daily updates on competitor products and any external awards or news coverage the company receives
- B. a manufacturing facility that needs to provide updated training on proper equipment usage and to allow operators to hear and see peers at all participating sites
- C. a global fast-food franchise that needs to coach new managers on best practices in customer service and leadership behaviors and answer questions from the audience
- D. an accounting firm that wants to deliver monthly training sessions to global finance personnel who need to access sessions at different times, depending on branch locations

Answer: A,D

QUESTION 261:

Internet Protocol videoconferencing (IP/VC) provides which two business benefits? (Choose two.)

- A. real-time discussions of patient information among remote medical teams
- B. reduced travel time for instructors responsible for different geographic sites
- C. improved morale and reduced turnover among employees who receive timely business updates
- D. increased sales and customer satisfaction due to current product information disseminated simultaneously to a global sales force by headquarters

Answer: A,B

QUESTION 262:

What are two tasks the network gatekeeper performs in an Internet Protocol videoconferencing (IP/VC) system? (Choose two)

- A. Controls network traffic.
- B. Registers participant requests.
- C. Delivers requests for video on demand (VoD).
- D. Enabled communication between IP and legacy video terminals.

Answer: A,B

QUESTION 263:

You work as a network consultant at Certkiller .com. One of your clients has recently started to use the Internet Protocol videoconferencing (IP/VC) technology. Which two components are included in this system? (Choose two)

- A. Multipoint control unit (MCU)
- B. Multicast access server
- C. Media control server
- D. Network gateway

Answer: A,D

QUESTION 264:

You work as a network consultant at Certkiller .com. One of your clients wants to deploy the Internet protocol TV broadcasting (IP/TV) system. Which two components does it include? (Choose two)

- A. Storage server (pass)
- B. Broadcast server
- C. Content server
- D. Archive server

Answer: B,D

QUESTION 265:

What two features does the Internet Protocol TV broadcasting (IP/TV) viewer offer to a user? (Choose two)

- A. Helps locate program listings.

- B. Determines a schedule of broadcast programs.
- C. Provides a separate viewing window with TV-like controls.
- D. Broadcasts a real-time video data stream to a desktop personal computer (PC).

Answer: A,C

Explanation:

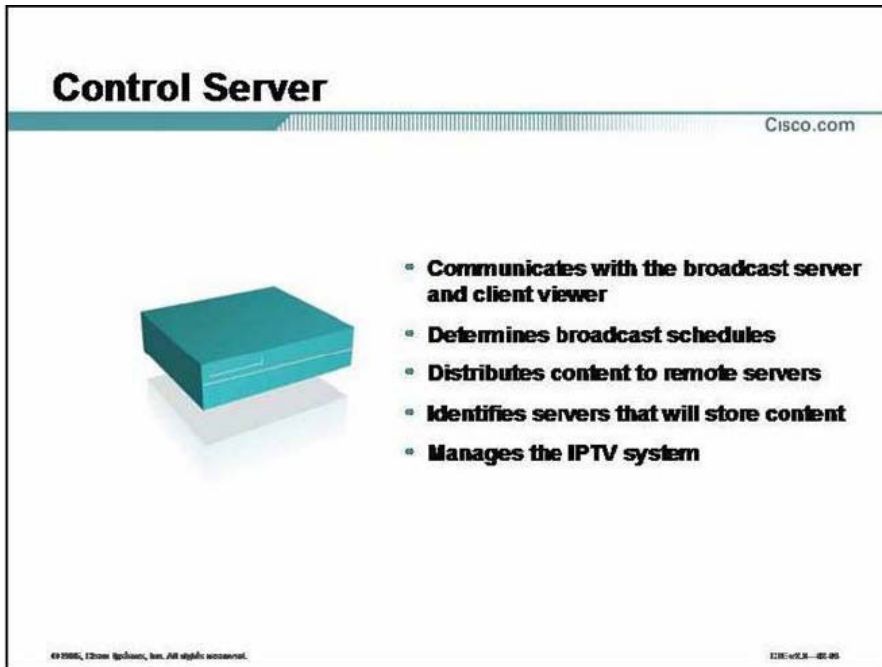
Other Components



IPTV viewer with web plugin:

- **Allows video to be viewed on a PC desktop**
- **Provides a separate viewing window with program listings and TV-like controls**

Not B: B is a function of the control server!



QUESTION 266:

You work as a network consultant at Certkiller .com. One of your clients has successfully deployed the Internet Protocol videoconferencing (IP/VC) technology. What can the client use this for? (Choose two)

- A. To deliver a program about company restructuring to staff at multiple global sites.
- B. To deliver a live, annual financial report to all employees.
- C. To create an interactive virtual classroom for instructors and students located in different locations.
- D. To facilitate online collaboration by team of engineers using a "whiteboard" application.

Answer: C,D

QUESTION 267:

You work as a network consultant at Certkiller .com. Certkiller wants to deploy Internet Protocol videoconferencing (IP/VC).

Which advantages would this provide to the company? (Select two.)

- A. It would reduce travel time for instructors responsible for different geographic sites.
- B. It would enable real-time discussions of patient information among remote medical teams.

- C. It would increase sales and customer satisfaction due to current product information disseminated simultaneously to a global sales force by headquarters.
- D. It would improve morale and reduces turnover among employees who receive timely business updates.

Answer: A,B

QUESTION 268:

You work as a network consultant at Certkiller .com. Certkiller has decided to provide distance-learning using the Internet Protocol videoconferencing (IP/VC) technology. What could Certkiller use this system for?

- A. To allow students who missed a class to access archived education lectures recorded by Certkiller instructors.
- B. To deliver a message from the Certkiller CEO to all staff on the first day of the semester.
- C. To allow MCSE certified Certkiller instructors answer questions from students in a MCP course.
- D. To deliver an interactive program from a traveling scholar attending a conference on the main Certkiller campus to students at multiple locations.

Answer: C, D

QUESTION 269:

Internet Protocol TV Broadcasting (IP/TV) is appropriate for which two business scenarios? (Choose two)

- A. A manufacturing facility that needs to provide updated training on proper equipment usage and to allow operators to hear and see peers at all participating sites.
- B. A global fast-food franchise that needs to coach new managers on best practices in customer service and leadership behaviors and answer questions from the audience.
- C. An accounting firm that wants to deliver monthly training sessions to global finance personnel who need to access sessions at different times, depending on branch locations.
- D. A pharmaceutical organization that wants to provide daily updates and competitor products and any external awards or news coverage the company receives.

Answer: C, D

Explanation:

Answers C and D because IP TV is broadcasting: unidirectional in A they talk rather about IP VC

QUESTION 270:

Which two devices are considered customer premises equipment (CPE) for digital subscriber line (DSL) systems? (Choose two.)

- A. DSL router
- B. DSL modem
- C. DSL Internet Protocol (IP) switch
- D. "Smart" DSL access multiplexer (DSLAM)

Answer: A,B

QUESTION 271:

Certkiller .com, a large online retailer, has a primary and a standby corporate data center. Certkiller .com seeks a technology with the following characteristics regarding the information exchange between the two data centers:
high speed, secure, reliable, synchronized
What technology should be chosen?

- A. Internet Protocol (IP) telephony
- B. Wireless local-area network (WLAN)
- C. Cable modem
- D. ISDN
- E. Optical network
- F. DSL

Answer: E

QUESTION 272:

Certkiller .com, a producer of educational videos, are contemplating to use an optical networking solution to improve productivity.
The optical network technology provides two customer business needs? (Select two.)

- A. The optical network technology enables high-speed transfer of digitized video between the special effects and editing departments.
- B. The optical network technology ensures the secure transfer of digitized film backups to an offsite storage facility.
- C. The optical network technology reduces the costs of online collaboration between screenwriters and special effects coordinators.
- D. The optical network technology eliminates the need to transfer digitized film backups to an offsite storage facility.

Answer: A,C

QUESTION 273:

You work as a network consultant at Certkiller .com. One of your clients has a primary and a standby data center. The client wants to provide disaster recovery by using a technology that provides the fastest and most reliable synchronization between the two sites.

What should you recommend?

- A. Usage of a Virtual Private Network (VPN)
- B. Usage of a Routing and Remote Access (RRAS) server.
- C. Usage of an optical network.
- D. Usage of a Digital subscriber line (DSL)
- E. Usage of an offsite content storage

Answer: C

QUESTION 274:

Which two devices are considered customer premises equipment (CPE) for digital subscriber line (DSL) systems? Select two.

- A. DSL modem
- B. DSL router
- C. DSL Internet Protocol (IP) switch
- D. "smart" DSL access multiplexer (DSLAM)

Answer: A,B

QUESTION 275:

You work as a network consultant at Certkiller .com. Certkiller uses Fedex for daily transfers of large files between the central and the regional offices. Now Certkiller wants a fast, high-bandwidth network connection to save time and money.

What should you suggest?

- A. Use a Digital subscriber line (DSL).
- B. Use an ISDN line.
- C. Use an optical network.
- D. Use Remote Access Services (RAS)
- E. Use Internet Protocol (IP) telephony.

F. Use Wireless local-area network (WLAN).

Answer: C

QUESTION 276:

You work as DSL broadband sales person at Certkiller . What should you tell potential DSL customers?

Which benefit does digital subscriber line (DSL) systems for broadband access provide to the user?

- A. Digital subscriber line (DSL) systems provide a secure access to company extranet.
- B. Digital subscriber line (DSL) systems provide data and audio signals that share the same communications infrastructure.
- C. Digital subscriber line (DSL) systems provide dedicated lines for high security data transfer.
- D. Digital subscriber line (DSL) systems provide a simple solution for high-quality digital video using coaxial cable.

Answer: B

QUESTION 277:

You work as a network consultant at Certkiller .com. One of your clients requires a hardware component that has the following characteristics:

It collects and combines traffic from customer premises equipment (CPE) and it separate signals that are going to the CPEs.

What should you tell them?

- A. Use a cable splitter.
- B. Use a switch.
- C. Use a digital subscriber line access multiplexer (DSLAM)
- D. Use a cable Modem termination System (CMTS) equipment
- E. Use a cable access router.
- F. Use a standard router.

Answer: C

QUESTION 278:

Which benefit does digital subscriber line (DSL) systems for broadband access provide to the user?

- A. secure access to company extranet
- B. dedicated lines for high security data transfer
- C. simple solution for high-quality digital video using coaxial cable
- D. data and audio signals that share the same communications infrastructure

Answer: D

QUESTION 279:

Which Cisco product is a hardware component that supports content filtering and other gateway security functions for the Catalyst 6500 Series?

- A. Cisco Firewall Services Module (FWSM)
- B. Cisco Private Internet Exchange (PIX) Firewall
- C. Cisco VPN/Security Management Solution (VMS)
- D. Cisco Internetwork Operating System (IOS) Firewall

Answer: A

QUESTION 280:

What is the Cisco goal for positioning in the marketplace?

- A. to be first in every market in which Cisco participates
- B. to be in the top 1% in every market in which Cisco participates
- C. to be first or second in every market in which Cisco participates
- D. to be in the top 10% in every market in which Cisco participates

Answer: C

QUESTION 281:

A software engineering firm wants to streamline call center operations to reduce customer wait times and improve employee productivity. Which Cisco solution best matches this business need?

- A. optical network
- B. IP telephony
- C. WLAN
- D. DSL

Answer: B

QUESTION 282:

A large online retailer is seeking a technology solution to increase the speed, security, and reliability of synchronized exchanges of customer account information between a primary and standby corporate data center. Which technology is most capable of providing this benefit?

- A. cable modem
- B. optical network
- C. Internet Protocol (IP) telephony
- D. wireless local-area network (WLAN)

Answer: B

QUESTION 283:

Which Cisco product is a software component that blocks unwanted connections and provides other gateway security functions for small business?

- A. Cisco Firewall Services Module (FWSM)
- B. Cisco Secure Access Control Server (ACS)
- C. Cisco Private Internet Exchange (PIX) Firewall
- D. Cisco Internetwork Operating System (IOS) Firewall

Answer: D

QUESTION 284:

Which network technology allows for the monitoring of active communication networks to diagnose problems and gather statistics for network administration?

- A. network security
- B. content networking
- C. network management
- D. campus local-area networking

Answer: C

QUESTION 285:

What is a network that is composed of smaller local-area networks (LANs) that exist within a business campus?

- A. campus LAN
- B. LAN campus subnet
- C. campus wide-area network (WAN)
- D. campus storage-area network (SAN)
- E. campus local-area neighborhood (LAN)
- F. campus metropolitan-area network (MAN)

Answer: A

QUESTION 286:

Which network component blocks unwanted connections and content from both internal and external sources?

- A. firewall
- B. extranet
- C. access control
- D. Virtual Private Network (VPN) tunnel

Answer: A

QUESTION 287:

Which feature does the Cisco IOS provide for networks?

- A. network management that automates transaction backups
- B. network intelligence that enables business-critical applications
- C. network management that automates moves, adds, and changes
- D. content routing that pushes high-priority media to the network edge

Answer: B

QUESTION 288:

Which feature of Cisco IOS allows customers flexibility and choice when selecting platforms for their networks?

- A. open standards
- B. quality of service (QoS)
- C. remote software upgrades
- D. broad installed base on platforms

Answer: A

QUESTION 289:

An essential element of Cisco development has been its leading role in advancing what network protocol?

- A. Internet Protocol (IP)
- B. Point-to-Point Protocol (PPP)
- C. Serial Line Internet Protocol (SLIP)
- D. Asynchronous Transfer Mode (ATM)

Answer: A

QUESTION 290:

Which Cisco product allows customers to centrally manage their network security policies?

- A. Cisco Firewall Services Module (FWSM)
- B. Cisco Security Posture Assessment (SPA)
- C. Cisco Secure Access Control Server (ACS)
- D. Cisco Virtual Private Network/Security Management Solution (VMS)

Answer: D

QUESTION 291:

Which Cisco software provides intelligence to the network?

- A. Cisco IOS
- B. CiscoWorks
- C. Cisco ONS 15540
- D. Cisco CallManager

Answer: A

QUESTION 292:

What are the two primary advantages of content networking solutions? (Choose two.)

- A. optimized processing of content delivery
- B. optimized processing of bandwidth requests
- C. optimized processing of content requests
- D. optimized processing of error notification

Answer: A,C

QUESTION 293:

Cisco 12000 Series routers provide carrier-class availability and performance in both the network backbone and at the edges. This solution is appropriate for a _____.

- A. midsize financial services company that has acquired a smaller company, which has locations in three different cities
- B. new and growing Internet hosting company with global Internet data centers whose business customers depend on the reliability of the network
- C. university that wants to create an integrated communications network that supports distance learning, e-learning, and collaborative research
- D. midsize enterprise organization that is migrating to a converged network for its internal employees to address user needs for voice, video, and data

Answer: B

QUESTION 294:

Which is an opportunity indicator for CiscoWorks network LMS?

- A - a global enterprise seeking to combine the disparate voice, video, and data networks into one converged network
- B - a growing enterprise wanting to rapidly deploy a converged wireless LAN and to quickly locate and troubleshoot problems
- C - a global enterprise with a converged network voice, video, and data networks seeking to comply with network security regulations
- D - a growing enterprise wanting to reduce network downtime and costs associated with network changes, diagnosis and maintenance.

Answer: D

QUESTION 295:

Approximately 75% of all Cisco customers regularly update their Cisco IOS software.

What is a potential consequence of not regularly updating Cisco IOS software?

- A. Employee dissatisfaction could increase.
- B. A customer could fall behind competitors in the market.
- C. A customer may not be able to use all their software on their company network.
- D. It could take longer to escalate calls within the Cisco Technical Assistance Center (TAC).

Answer: B

QUESTION 296:

You work as a network consultant at Certkiller .com. You are required to sell Cisco Internet Protocol (IP) telephony solutions. Which would be the two best would-be customers? (Choose two)

- A. An enterprise with multiple offices must provide access to large volumes of content to support a wide variety of business operations.
- B. A growing publishing firm needs a secure way for remote content editors to connect through the Internet to the company extranet.
- C. A global supplier of integrated processors wants to implement specialized voice applications to increase productivity and reduce the cost of overseas toll calls.
- D. An accounting software manufacturer wants to streamline call center operations to reduce customer wait time and improve employee productivity.

Answer: C,D

QUESTION 297:

You work as a network consultant at Certkiller .com. Certkiller has a multi-vendor network. You suggest that Cisco products should be used. Your boss asks you to motivate your decision.

What should you tell him?

- A. Usage of Cisco products would give reliable failover that promotes end-to-end communication.
- B. Usage of Cisco products would give designs based on industry standards that promotes interoperability.
- C. Usage of Cisco products would give maximum throughput and performance that reduces bottlenecks.
- D. Usage of Cisco products would give proprietary software specifically focused on interoperability

Answer: B

QUESTION 298:

Which networking solution is appropriate for a financial services firm with employees in remote offices who expect to have access to the same internal communications as employees at primary company facilities?

- A. High-speed access
- B. Wide-area network (WAN)
- C. Campus local-area network (LAN)
- D. Wireless local-area network (WLAN)

Answer: B

QUESTION 299:

You work as a network consultant at Certkiller .com. Your boss asks you to name a Series of Cisco routers out of the following list.

- A. 3700
- B. 6500
- C. 2900
- D. 3500

Answer: A

QUESTION 300:

As a Certkiller instructor you are giving a lecture on the Cisco AVVID model. A student asks you which component belongs in the Unified Control Plane layer. What is your reply?

- A. Software needed to establish network provisioning.
- B. Applications that organization use to gain competitive advantage.
- C. Hardware needed to build the network.
- D. Network clients such as Cisco IP telephones.

Answer: A

QUESTION 301:

Building long-term relationships with customers is the goal of which Cisco activity?

- A. Improvement in Cisco IOS.
- B. Customer satisfaction surveys.
- C. Investment in research and development.
- D. Acquisition of leading technology companies.

Answer: B

QUESTION 302:

Your Certkiller trainee asks you what good Cisco IOS is for networks.
What should you tell him?

- A. Cisco IOS provides network intelligence that enables business-critical applications.
- B. Cisco IOS provides network management that automates moves, adds, and changes.
- C. Cisco IOS provides content routing that pushes high-priority media to the network edge
- D. Cisco IOS provides network management that automates transaction backups.

Answer: A

QUESTION 303:

Your Certkiller trainee Bob asks you to characterize a switch.
What should you tell him?

- A. A switch broadcasts data messages to all devices that are connected to it.
- B. A switch forwards data messages based on the destination address of the message.
- C. A switch reads Layer-5 information and sends data directly to the router.
- D. A switch stores data on the network.

Answer: B

QUESTION 304:

You work as a network consultant at Certkiller .com. One of your clients has the following requirements:reduce budget, reduce IT personnel, increase network security, desire to provide more complex networks
You are required to select an appropriate network technology for this client.

- A. You should recommend a Storage-area network (SAN)
- B. You should recommend a Content delivery network (CDN)
- C. You should recommend a Wireless local-area network (WLAN)

- D. You should recommend an Optical network.
- E. You should recommend Network management.
- F. You should recommend a Windows 2000 Routing and Remote Access (RRAS) server.

Answer: E

QUESTION 305:

You work as a network consultant at Certkiller .com. One of your clients needs a hardware component with the following characteristics:content filtering must be provided, gateway security functions for 6500 Series Catalyst must be provided. What should you tell the client?

- A. Use Cisco VPN/Security management Solution (VMS).
- B. Use Cisco Internetworking Operating System (IOS) Firewall.
- C. Use Cisco Private Internet Exchange (PIX) Firewall.
- D. Use Cisco Firewall Services Module (FWSM).

Answer: D

QUESTION 306:

Your Certkiller trainee asks you what is characterized by a Cisco router. (Select two,)

- A. A router broadcast data to all devices that are connected to it across the LAN.
- B. A router broadcast data to all devices that are connected to it across the WAN.
- C. A router reads Media Access Control (MAC) addresses to forward messages to the correct location.
- D. Routes traffic down alternative paths.
- E. The Router stores data on the network.
- F. A router is able to connect the local-area network (LAN) to the wide-area network (WAN).

Answer: D,F

QUESTION 307:

How can businesses, schools, or government organizations benefit from Cisco ACNS? Select two.

- A. by using the content engines for instruction detection
- B. by compressing packets to improve WAN bandwidth
- C. by accelerating SAP, student information systems and other intranet applications

D. by delivering live and on-demand video for salesforce readiness, distance learning or communications

Answer: C,D

QUESTION 308:

You work as a network consultant at Certkiller .com. One of your clients are unsure if they should use a best-of-breed product or use Cisco AVVID when they build a new network.

They ask you to clarify the differences between the two approaches.
What should you tell the client? (Choose two)

- A. AVVID networks can be customized to meet customer needs.
- B. Network platform adapters are required for best-of-breed networks.
- C. Best-of-breed networks performance is only as good as the weakest component.
- D. AVVID networks can bypass the weakest component in the network.

Answer: C,D

QUESTION 309:

You work as a network consultant at Certkiller .com. One of your clients has multiple global call centers. This client now wants to reduce costs and improve customer service.
What Cisco solution best meets the requirement for this client?

- A. Routing and Remote access (RRAS)
- B. Internet Protocol (IP) telephony
- C. Wireless local-area network (WLAN)
- D. Storage-area network (SAN)
- E. Virtual Private Network (VPN)

Answer: B

QUESTION 310:

The account manager at Certkiller .com recommends a WAN solution with universal gateways.

For which customers is this recommendation valid?

- A. For customers that requires flexibility for remote workers who connect to the company from their homes.
- B. For customers that have enterprise branch offices that must connect to the Internet

over the Public Switched Telephone Network (PSTN).

C. For customers that requires collaboration between project teams at different locations around campus.

D. For customers that requires mobility for offsite personnel who work at local client locations.

Answer: B

QUESTION 311:

You work as a network consultant at Certkiller .com. One of your clients is searching for additional Cisco hardware. The following requirements are made:

only a single edge device should be used to offer different types of services to end users, support of Asynchronous Transfer Mode (ATM), support of Frame Relay, usage of a single platform

What should you tell them to buy?

- A. 3600 Series
- B. 5000 Series
- C. 7600 Series
- D. 10000 Series
- E. 15000 Series

Answer: D

QUESTION 312:

Which is an opportunity indicator for a CiscoWorks QoS Policy Manager (QPM) solution?

- A. A midsize insurance company hoping to cut toll-call costs to foreign branch offices.
- B. An Internet service provider (ISP) needing to provide better quality of service (QoS) to its customers.
- C. A growing enterprise wanting to automate and simplify diagnosing network problems at branch offices.
- D. A global enterprise needing end-to-end quality of service (QoS) for a converged voice, video, and data network.

Answer: D

QUESTION 313:

You work as a network consultant at Certkiller .com. One of your clients, a service

provider, needs Cisco hardware to...
provide a premier high-end platform used in a backbone
provide edge applications which supports DS3 for Frame Relay
What should you tell the client?

- A. Use a 12000 Series Cisco Router.
- B. Use a 5000 Series Cisco Router.
- C. Use a 15000 Series Cisco Router.
- D. Use a 7600 Series Cisco Router.
- E. Use a 10000 Series Cisco Router.

Answer: A

QUESTION 314:

What best characterizes Cisco Virtual Private Network/Security Management Solution (VMS)?

- A. It is used to secure the network.
- B. It is used to monitor and respond.
- C. It is used to develop security policies.
- D. It is used to test the system

Answer: C

QUESTION 315:

You work at Certkiller and you required to target potential customers to sell Cisco virtual Private Network (VPN) solutions. Which of the following two should you contact?
(Choose two)

- A. An online movie retailer with multiple downloading locations that wants to centralize access to large media files.
- B. A bank that opens several branch offices require secure access to underwriting information on the corporate extranet.
- C. A denial of service (DoS) attack that disables Internet access for several thousand customers of a large Internet Service Provider (ISP).
- D. A growing exam vendor that needs a secure way for remote content editors to connect through the Internet to the company extranet.

Answer: B,D

QUESTION 316:

Your Certkiller boss wants you to give guidelines regarding usage of switches and routers.

What should you tell him? (Select three).

- A. Layer-2/3 switches have more wire-area network (WAN) connections than routers.
- B. Routers have more wire-area network (WAN) connections than Layer-2/3 switches.
- C. Routers have more local-area network (LAN) connections than Layer-2/3 switches.
- D. Layer-2/3 switches have more local-area network (LAN) connections than routers.
- E. You should route where it is possible, switch only when you are required to.
- F. You should switch where it is possible, route when you are required to.

Answer: B,D,F

QUESTION 317:

Cisco has a specific goal regarding its position in the marketplace.

Which of the following is it?

- A. Cisco aims to be in the top 10% in every market in which Cisco participates.
- B. Cisco aims to be first or second in every market in which Cisco participates.
- C. Cisco aims to be first in every market in which Cisco participates.
- D. Cisco aims to be in the top 1% in every market in which Cisco participates.

Answer: B

QUESTION 318:

What best characterizes Cisco firewalls?

- A. They are used to test the system
- B. They are used to secure the network.
- C. They are used to monitor and respond.
- D. They are used to develop security policies.

Answer: B

QUESTION 319:

Which Cisco series is an affordable wireless local-area network (WLAN) solution that is compliant with 802.11b standards and upgradeable to 802.11g standards?

- A. Aironet 350 Series

- B. Aironet 550 Series
- C. Aironet 1100 Series
- D. Aironet 1200 Series

Answer: C

QUESTION 320:

The Aironet 1100 and 1200 Series components are intended to support which network technology?

- A. wireless network
- B. high-speed access
- C. campus local-area network (LAN)
- D. metropolitan-area network (MAN)

Answer: A

QUESTION 321:

You work as a network consultant at Certkiller .com. You have used the CISCO AVVID model to deploy a network for one of the clients.

What could be said regarding the Intelligent network Services layer in this network?

- A. The application to gain competitive advantage feature would be enabled.
- B. The Network provisioning feature would be enabled.
- C. The Video on demand (VoD) feature would be enabled. \
- D. The Quality of service (QoS) prioritization feature would be enabled.

Answer: D

QUESTION 322:

In the model for Cisco AVVID, which component belongs in the Internet Business Solutions layer?

- A. Hardware devices used to build a network.
- B. Network client such as Cisco IP telephones.
- C. Technologies needed to establish network provisioning.
- D. Applications that organizations use to gain competitive advantage.

Answer: D

QUESTION 323:

You work as a network consultant at Certkiller .com. One of your clients has a Cisco AVVID network. Which two advantages does this bring the client? (Select two.)

- A. It would improve productivity by enabling applications that enhance telephone call routing.
- B. It would reduce costs through price breaks offered by Cisco partners.
- C. It would lower costs by improving throughput on network components.
- D. It would increase customer satisfaction by enabling applications that provide a more enjoyable user experience.

Answer: A,C

QUESTION 324:

Which feature of Cisco IOS allows customers flexibility and choice when selecting platforms for their networks?

- A. Open standards
- B. Quality of service (QoS)
- C. Remote software upgrades
- D. Broad installed base in platforms

Answer: A

QUESTION 325:

Which Cisco product allows customers to centrally manage their network security policies?

- A. Cisco Firewall Services Module (FWSM)
- B. Cisco Security Posture Assessment (SPA)
- C. Cisco Secure Access Control Server (ACS)
- D. Cisco Virtual Private Network/Security Management Solution (VMS)

Answer: D

QUESTION 326:

What is a key benefit of regularly updating Cisco IOS?

- A. There is no need to update applications software.
- B. It allows customers to reduce the number of technical support staff.
- C. It eliminates the need for Technical Assistance Center (TAC) support.
- D. It increases the number of technologies and applications the customer's network can support.

Answer: D

QUESTION 327:

You work as a network consultant at Certkiller .com. One of your clients has decided to purchase a Cisco 12000 Series router in order to provide carrier-class availability and performance in both the network backbone and at the edges.
When would this solution be appropriate?

- A. For a university that wants to create an integrated communications network that supports distance learning, e-learning, and collaborative research.
- B. For a midsize financial services company that has acquired a smaller company, which has locations in three different cities.
- C. For a midsize enterprise organization that is migrating to a converged network for its internal employees to address user needs for voice, video, and data.
- D. For a new and growing Internet hosting company with global Internet data centers whose business customers depend on the reliability of the network.

Answer: D

QUESTION 328:

Cisco develops different networking technologies. What main goal does Cisco have for each of these network technologies?

- A. The primary goal is to deliver lowest cost products based on industry open standards.
- B. The primary goal is to deliver End-to-end solutions based on industry open standards.
- C. The primary goal is to deliver End-to-end solutions based on Cisco proprietary software.
- D. The primary goal is to deliver "best of breed" based on Cisco proprietary software.

Answer: B

QUESTION 329:

A Certkiller trainee asks you, in the context of a CiscoWorks network LAN Management Solution (LMS), what an opportunity indicator is. What should you tell the trainee?

- A. An opportunity indicator is a growing enterprise wanting to automate and simplify diagnosing network problems at branch offices.
- B. An opportunity indicator is an Internet service provider (ISP) needing to provide better quality of service (QoS) to its customers.
- C. An opportunity indicator is a global enterprise deploying a converged network of voice, video, and data.
- D. An opportunity indicator is a small insurance company hoping to cut toll-call costs to foreign branch offices.

Answer: A

QUESTION 330:

Certkiller provides content networks to service providers. In which two modes is Certkiller able to deliver content? (Choose two)

- A. Storage
- B. High-speed
- C. Content updating
- D. Caching

Answer: A, D

QUESTION 331:

Cisco.com is a portal that provides customers access to_____.

- A. spare parts
- B. unlimited software downloads
- C. major upgrades for their CiscoWorks 2000 software
- D. online product and technology information, interactive network management and diagnostic tools, and empowering knowledge transfer resources.

Answer: D

QUESTION 332:

As a Certkiller instructor you are giving a lecture on the historical context of Cisco. You point out that a computer scientist started the Cisco Corporation. One of the attendants asks you when and where Cisco was founded. What should you respond? (Select two)

- A. 1978
- B. 1984
- C. 1991
- D. 1996
- E. Massachusetts Institute of Technology
- F. California Polytechnic Institute
- G. Harvard
- H. Stanford

Answer: B, H

QUESTION 333:

Your Certkiller trainee wants to know why wires are twisted in a twisted-pair cable. What should you tell the trainee?

- A. It prevents echo.
- B. It prevents signal bounce.
- C. It prevents breaks in the wire.
- D. It prevents cross talk.

Answer: D

QUESTION 334:

Which component connects dissimilar network environments?

- A. Hub
- B. MAU
- C. Gateway
- D. Repeater

Answer: C

QUESTION 335:

How many layers are in the OSI model?

- A. 5
- B. 6
- C. 7
- D. 8

Answer: C

QUESTION 336:

Your Certkiller trainee wants to know what network component is viewed as a host.

- A. Hub
- B. Access point
- C. Workstation
- D. Switch
- E. Printer

Answer: C

QUESTION 337:

Your Certkiller trainee Jack asks you to name OSI model at which switching occurs.

- A. Layer 0
- B. Layer 1
- C. Layer 2
- D. Layer 3
- E. Layer 4
- F. Layer 5

Answer: C

QUESTION 338:

Your Certkiller trainee Jack asks you to name the file layers in the OSI model. (Choose five)

- A. Protocol
- B. Application
- C. Router Gateway
- D. Data link
- E. Session
- F. Physical
- G. Switch
- H. Transport
- I. Information

Answer: B, D, E, F, H

QUESTION 339:

Which three of the following are benefits of Cisco TAC? (Choose three.)

- A. Direct or indirect access to the global Cisco TAC organization
- B. The ability to access teams of experts J C- Onsite engineering support
- D. Minimizes risks associated with network downtime
- E. Upgrades from base Cisco IOS Software to advanced feature set Cisco IOS Software
- F. Project management and planning support

Answer: A, B, D

QUESTION 340:

Which type of deployment utilizes ISRs with Cisco IOS Security feature sets to provide an ideal, low-cost, yet capable and powerful platform?

- A. Small deployments
- B. Large deployments
- C. Medium deployments
- D. Commercial deployments
- E. Financial deployments

Answer: A

QUESTION 341:

Which Cisco program fairly and equitably rewards partners that actively identify, develop, and win new business opportunities in targeted market segments?

- A. Value Incentive Program
- B. Solution Incentive Program
- C. Opportunity Incentive Program
- D. Foundation Advantage
- E. Opportunity Incentive Program

Answer: C