

**Actualtests.com**

The Power of Knowing



Exam : 1Z0-131

Title : Oracle9i, Build Internet Applications I

Ver : 11-10-08

---

**QUESTION 1:**

The accounting manager wants you to create a form that when queried will display a calculated total of year to date actual expenditure for the fund code entered. The values needed to generate this summary data are store in multiple tables. How would you define the data source for this data block without having the DBA create a database object?

- A. Choose tools->data block wizard, select view as the data source type, and base the block on the columns from the tables.
- B. Choose tool->data block wizard, select table as the data source type, and base the block on the columns from the tables.
- C. Select the data block node in the object navigator and click the create button. Choose to built the data block manually and alter the query data source argument properties to enter the SELECT statement.
- D. Select the data block node in the object navigator and click the create button. Choose to built the data block manually and alter the query data source type property to table and enter the select statement in the query data source name property.
- E. Choose tool->data block wizard, select stored procedure as the data source type and base the blocks on the columns from the tables.
- F. Select the data block nodes on the object navigator and click the create button. Choose to build the data block manually, alter the query data source type property to 'FROM' clause query', and enter the select statement in the query data source name property.

Answer: F

Explanation : Data source could be a FROM clause query for the data block. FROM clause query will not require to create any additional view or object on the database server. Specify FROM clause query in the object navigator and click create button and choose to build the data block manually to specify the FROM clause query as a source.

---

**QUESTION 2:**

You need to know the name of the master block driving the current block co-ordination for use in an On-Clear-Details trigger. Which system variable can you use to obtain this information?

- A. System.coordination\_operation
- B. System.master\_block
- C. System.current\_block
- D. System.block\_status

Answer: B

Explanation : Data SYSTEM.MASTER\_BLOCK represents the name of the driving master

block, and SYSTEM\_COORDINATION\_OPERATION represents the coordination-causing event that occurred on the master block.

---

**QUESTION 3:**

The accounting manager wants you to create a form that when queried will display a calculated total of year to date actual expenditures for the fund code entered. The values needed to generate this summary data are stored in multiple tables. Which data source type can you assign to the data block for this form without having the DBA create a database object?

- A. Database table.
- B. Transactional trigger.
- C. Stored procedure.
- D. FROM clause query.
- E. Client side procedure.

Answer: D

Explanation : Data source could be a FROM clause query for the data block. FROM clause query will not require to create any additional view or object on the database server. Selecting from multiple tables on the database server without creating any additional objects on the database server can be achieved by making the data source of the data block a FROM clause.

---

**QUESTION 4:**

You need to return a table of record displaying the account numbers of all the uses customers but null for the account number of other customers. Which data source would you use to create the data block?

- A. Table
- B. Transactional
- C. Stored procedure
- D. FROM clause query

Answer: C

Explanation : Stored Procedure can act as a data source for the data block. When it's used it can accept parameters sent by client and retrieve data based on the parameters sent. Stored Procedure should be created first on the database server. It can return null for account numbers based on the select statement written.

---

**QUESTION 5:**

You created a global record group in the order entry application. This record group should pass values to reports allowing a user to print a customer receipt. Which built-in could you use to pass the record group to another Oracle product?

- A. CREATE\_GROUP
- B. POPULATE\_GROUP
- C. RUN\_PRODUCT
- D. GET\_GROUP\_SELECTION

Answer: C

Explanation : RUN\_PRODUCT Invokes one of the supported Oracle tools products and specifies the name of the module or module to be run. If the called product is unavailable at the time of the call, Form Builder returns a message to the end user.

---

**QUESTION 6:**

The next button on the Sales form will be used to invoke the ORD\_ENTRY form. When the ord\_entry form is invoked the data on both forms needs to be synchronized. Which built-in should you use to invoke the form in a modal window?

- A. NEW\_FORM
- B. CALL\_FORM
- C. OPEN\_FORM
- D. RUN\_PRODUCT

Answer: B

Explanation : CALL\_FORM Runs an indicated form while keeping the parent form active. Form Builder runs the called form with the same Runform preferences as the parent form. When the called form is exited Form Builder processing resumes in the calling form at the point from which you initiated the call to CALL\_FORM.

---

**QUESTION 7:**

The DBA has indicated that lock contention is occurring in the payroll application. To reduce contention you create a timer that will display an alert prompting the user to commit a rollback data after they have held a lock for a specified period of time. Which built-in could you use in a When-Timer-Expired trigger to implement this functionality?

- A. FIND\_TIMER
- B. CREATE\_TIMER
- C. SET\_TIMER
- D. DELETE\_TIMER
- E. GET\_APPLICATION\_PROPERTY

Answer: C

Explanation : SET\_TIMER Changes the settings for an existing timer. You can modify the interval, the repeat parameter, or both. It can be used with SET\_APPLICATION\_PROPERTY to get the last timer that was expired.

---

**QUESTION 8:**

You need to change the text of popup menu that appears when a user right clicks the mouse in the EMP\_DATA block. Where could you find the node for the popup menu in the object navigator?

- A. Built-in packages
- B. Menus
- C. PL/SQL libraries
- D. Object libraries
- E. Form

Answer: E

Explanation : The popup menu node is found in the Form in the Object Navigator.

---

**QUESTION 9:**

What is the first step you would take to attach a custom menu module to a form module?

- A. Generate the menu module.
- B. Regenerate the form module that the menu will be attached to-
- C. Designate the location of the form module.

Answer: A

Explanation : After building the menu module it needs to generate the menu module to build the .MMX file then attach the file to the form module.

---

**QUESTION 10:**

You are modifying the order entry application and want to disable all function keys that have not been explicitly defined. Which trigger can you define to accomplish this?

- A. KEY-OTHERS
- B. KEY-LISTVAL
- C. BACKKEY-FN
- D. KEY-UP

Answer: A

Explanation : A Key-Others trigger fires when an operator presses the associated key. A Key-Others trigger is associated with all keys that can have key triggers associated with them but are not currently defined by function key triggers (at any level). A Key-Others trigger overrides the default behavior of a Runform function key (unless one of the restrictions apply). When this occurs, however, Form Builder still displays the function key's default entry in the Keys screen.

---

**QUESTION 11:**

You are new to the development staff and need to determine the file system location for a file in a project you are working on. Where can you obtain this information from within project builder?

- A. Property palette.
- B. Global registry.
- C. User registry.
- D. Project view.

Answer: B

Explanation : Project builder save the information about the current projects in the Global Registry.

---

**QUESTION 12:**

You are creating a general ledger application and want the detail for posted general applications to be stored in a temporary table before they are committed to the general\_entry table. Which built-in can you use in a pre-commit trigger to create this temporary table?

- A. FORMS\_OLE
- B. FORMS\_DDL
- C. USER:EXIT
- D. HOST

Answer: B

Explanation : FORMS\_DDL Issues dynamic SQL statements at runtime, including serverside PL/SQL and DDL. All DDL operations issue an implicit COMMIT and will end the current transaction without allowing Form Builder to process any pending changes, as well as losing any locks Form Builder may have acquired.

---

**QUESTION 13:**

You have created a customized menu. You want users to be able to run a SQL report form menu item without having to provide their username and password. Which two predefined substitution parameters can you use? (Choose two)

- A. TT
- B. PW
- C. SO
- D. UN
- E. ADMINISTRATOR

Answer: B, D

Explanation : RUN\_PRODUCT can run a SQL report from menu item. PW and UN are predefined substitution parameters that you can use.

---

**QUESTION 14:**

You need to include a calendar class in the orders\_entry forms so users can quickly select a date for the ship\_date field. Which trigger could you use to display the calendar when a user invokes the list of values for the ship\_date field?

- A. KEY-LISTVAL
- B. WHEN-NEW-ITEM-INSTANCE
- C. WHEN-LIST-ACTIVATED
- D. WHEN-MOUSE-ENTERED

Answer: A

Explanation : KEY-LISTVAL trigger is used to display lists. Calendar class can be displayed using the KEY-LISTVAL trigger when user invokes the list of values.

---

**QUESTION 15:**

You have created a multiform payroll application. Which built-in can you use to perform navigation between open forms? (Choose three)

- A. NEW\_FORM
- B. CALL\_FORM
- C. GO\_FORM
- D. PREVIOUS\_FORM
- E. NEXT\_FORM

Answer: C, D, E

Explanation : CALL\_FORM opens the form in modal view and NEW\_FORM will hide the current calling form. GO\_FORM, PREVIOUS\_FORM and NEXT\_FORM can navigate through an open forms in the application.

---

**QUESTION 16:**

You modify the layout of a block using the Layout Wizard. When you are finished, you notice that there is an additional frame on your canvas and in the Object Navigator. Why did this frame appear?

- A. You did not specify a frame title in the Layout Wizard.
- B. You did not select a frame before invoking the Layout Wizard.
- C. You clicked the Finish button in the Layout Wizard without navigating through all the screens.
- D. You invoked the Layout Wizard from the top menu, rather than from the popup menu that appears when you right-click the canvas.

Answer: B

Explanation : To modify the layout of an existing block using the Layout Wizard you should first select the frame before invoking the Layout Wizard. The Layout Wizard will create additional frame if existing frame is not selected.

---

**QUESTION 17:**

Which built-in subprogram can be used to link form modules in an application, allowing the user to work in them concurrently?

- A. FIND\_FORM
- B. CALL\_FORM
- C. NEW\_FORM
- D. OPEN\_FORM

Answer: D

Explanation : The OPEN\_FORM built-in procedure is used to start another form in a modeless window from a current form session. This enables the user to work in multiple forms concurrently. The OPEN\_FORM built-in may be used in a trigger or a menu item.

---

**QUESTION 18:**

You want to capture the username and password for the current user. Which built-in subprogram can you use?

- A. GET\_APPLICATION\_PROPERTY
- B. GET\_RELATION\_PROPERTY
- C. GET\_VIEW\_PROPERTY
- D. GET\_FORM\_PROPERTY

Answer: A

Explanation : The GET\_APPLICATION\_PROPERTY unrestricted built-in subprogram can be used to capture the operator's username and populate a global variable with it. The GET\_APPLICATION\_PROPERTY built-in is used to return information about the current Form Builder application, such as the operator's username and password, the current form, the name of the calling form if the current form is called, and much more.

---

**QUESTION 19:**

You have created a LOV that displays the DEPT\_ID and DEPT\_NAME columns and returns a value only for the DEPT\_ID column. Users want to select a department from the list of the DEPT\_NAME columns only. How would you resolve this question?

- A. Set the Visible property to No for the DEPT\_ID text item.
- B. You cannot hide or remove the DEPT\_ID column from the LOV because the



DEPT\_ID column is the primary key in both the data block and the database table.

C. Create a Key-Listval trigger for the text item in which you write a SELECT statement to query the database table DEPT\_ID value for the selected DEPT\_NAME value.

D. Set the Display Width property to 0 (zero) for the DEPT\_ID column in the Column Mapping properties for the LOV.

Answer: C

Explanation : The best option is to create a Key-Listval trigger on the text item and write the SELECT statement to retrieve the DEPT\_ID from the specified table.

---

**QUESTION 20:**

When you create a radio group, you decide to leave the Mapping of Other Values property blank. Which statement is true?

A. You will receive an error when you try to run the form.

B. You will receive an error when you try to generate the .fmx file.

C. At run-time, you will be able to enter values with no radio button defined by rightclicking the item and choosing Other Values from the popup menu.

D. At run-time, you will not be able to retrieve rows from the database containing values for which no radio button is defined.

Answer: D

Explanation : Mapping the values for the radio group is necessary to be able to retrieve rows from the database that contains the values for which the radio button is defined. You will not be able to retrieve the rows from database at run time if you don't keep the Mapping of Other Values property blank at design time.

---

**QUESTION 21:**

Which built-in subprogram can be used to create global variables?

A. NAME\_IN

B. COPY

C. DEFAULT\_VALUE

D. LIST\_VALUES

Answer: C

Explanation : DEFAULT\_VALUE Copies an indicated value to an indicated variable if the variable's current value is NULL. If the variable's current value is not NULL, DEFAULT\_VALUE does nothing. Therefore, for text items this built-in works identically to using the COPY built-in on a NULL item. If the variable is an un definedglobal variable, Form Builder creates the variable.

---

**QUESTION 22:**

How would you convert an inherited property to a variant property?

- A. Type over the inherited value with a new value.
- B. Copy the property class and save with a new name.
- C. Copy the property to be changed into a new property class and change the values.
- D. An inherited property cannot be converted to a variant property.

Answer: A

Explanation : Inherited property can be converted to a variant property when you type over the inherited value with new value that you specify.

---

**QUESTION 23:**

Which built-in would you use to check whether a user selected a value from the PAY\_Type\_LOV?

- A. GO\_ITEM
- B. SHOW\_EDITOR
- C. SHOW\_LOV
- D. GET\_ITEM\_PROPERTY
- E. SYNCHRONIZE
- F. LIST\_VALUES

Answer: C

Explanation : SHOW\_LOV returns a Boolean indicating whether or not the user selected a value from the LOV. You could check this value and execute different logic depending on whether or not a value was selected.

---

**QUESTION 24:**

Which built-in subprogram can you use to navigate to the instance of the current item in the previous record?

- A. PREVIOUS\_RECORD
- B. UP
- C. SCROLL\_BACK
- D. PREVIOUS\_BLOCK

Answer: B

Explanation : UP built-in Navigates to the instance of the current item in the record with the next lowest sequence number.

---

**QUESTION 25:**

You are building a new application using generic code where possible, accessing Forms variable names at runtime. Which two built-ins can you use to access the Form

variables? (Choose two)

- A. COPY
- B. NAME\_IN
- C. DISPLAY\_ITEM
- D. GET\_FORM\_PROPERTY
- E. GET\_PARAMETER\_LIST
- F. GET\_APPLICATION\_PROPERTY

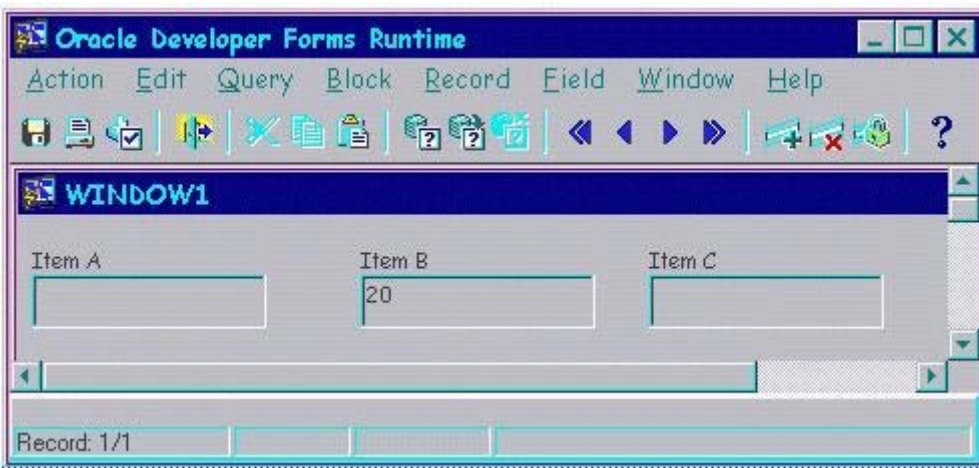
Answer: E, F

Explanation : GET\_PARAMETER\_LIST Searches the list of parameter lists and returns a parameter list ID when it finds a valid parameter list with the given name. And SET\_APPLICATION\_PROPERTY return property values of the application. Both can be used to access the form variables.

---

### QUESTION 26:

Exhibit.



All items have been created with default properties. There is a Pre-Text-Item trigger on

Item B with the following code:

```
if :blockname.item_b > '10' then  
  raise form_trigger_failure;  
end if;
```

The cursor is in Item

A. You press [Tab]. Which statement is true?

- A. Input focus will change to Item C.
- B. External navigation will not occur.
- C. Internal navigation will not occur.
- D. The form will exit due to a fatal error.
- E. A message indicating navigation failure will automatically be displayed.

Answer: C

Explanation : Pre-Text-Item Perform an action before Form Builder navigates to a

text item from the record level. No internal navigation will occur when moving from the text item to another.

---

**QUESTION 27:**

There is a column in the EMPLOYEE database table that indicates whether an employee is salaried or paid by the hour. This column has a NOT NULL constraint, and is currently a text item in a form that you are developing.

You are converting the existing text item to a check box. You change the Item Type property to Check Box in the item's Property Palette. To make the check box look and function as needed, what are three of the other properties you should set? (Choose three)

- A. Label
- B. Data Type
- C. Initial Value
- D. Maximum Length
- E. Copy Value from Item
- F. Value When Unchecked
- G. Synchronize with Item

Answer: A, C, F

Explanation : When converting the text item to a checkbox item the Label , Initial value and the value when checked must be set for the check box.

---

**QUESTION 28:**

Which master detail property would you use to delete the master record, but prevent detail records from being deleted?

- A. Non-isolated
- B. Cascading
- C. Isolated
- D. Restricted

Answer: C

Explanation : The Master Deletes property of a relation identifies how deletions in a master block are handled. In this scenario, you wanted to delete all detail records when a master record was deleted. To do so, you should set the Master Deletes property of the relation to Cascading. Default is not a valid Master Deletes property. When the Master Deletes property is set to Non-Isolated, master records cannot be deleted if associated detail records exist. When the Master Deletes property is set to Isolated, master record deletions only affect the master records, and any associated detail records remain intact.

---

**QUESTION 29:**

The items form contains the master detail relationship for inventory items and inventory

stock available. Users may delete an inventory item if the QUANTITY\_ON\_HAND=0. Which commit trigger can you use to implement a cascade delete for the item?

- A. Post-Delete
- B. Pre-Delete
- C. Post-Forms-Commit
- D. On-Delete

Answer: B

Explanation : The Pre-Delete trigger, which is a Pre-DML trigger, will fire four times. It fires once for each record that is marked for delete, just before the row is deleted in the database. The Pre-Delete trigger fires before a row is deleted during the Post and Commit Transactions process.

---

### **QUESTION 30:**

You are creating the SAL\_INFO data block on the EMP\_QUERY form. The SALARY field should only be populated if the logged on. Since this query can return a large number of records. You have created a stored procedure, which uses a REF cursor on which to base the data block. How would you create the data block?

- A. Click the data blocks mode in the object navigator and click the create button. Choose to create the data block manually and enter the procedure name in the query data force columns property and the procedure code in the query data source arguments property.
- B. Choose tools -> Data block, select table as the data source type and place the data block on the columns included in the procedure.
- C. Select the data block node in the object navigator and click the create button. Choose to build the data block manually. Alter the query data source type property to REF cursor and enter the name of the procedure in the query data source name property.
- D. Select the data blocks nose in the object navigator and click the create button. Alter the query data source name query data source column and query data source property to create a stored procedure that uses a REF cursor.
- E. Launch the data block wizard. Select stored procedure as the data source type and base the block on the procedure.

Answer: E

Explanation : Stored Procedures can use REF Cursors and they can be the source for the data block. To set that use the data block wizard and select the specified stored procedure as the data source and base the block on the procedure.

---

### **QUESTION 31:**

Which built-in can you use to replace the associated query of a record group?

- A. POPULATE\_LIST
- B. POPULATE\_GROUP\_WITH\_QUERY
- C. POPULATE\_GROUP
- D. POPULATE\_LIST\_WITH\_QUERY

Answer: B

Explanation :

The POPULATE\_GROUP\_WITH\_QUERY built-in populates the record group with a new query.

Example:

DECLARE

return\_code NUMBER;

BEGIN

return\_code := POPULATE\_GROUP\_FROM\_QUERY ('customers', 'SELECT id, name  
FROM customer WHERE state = 'Texas');

END;

---

### **QUESTION 32:**

Which mouse movement trigger can you use to initiate an action when the cursor navigates out of the current item?

- A. When-Mouse-Move.
- B. When-Mouse-Leave
- C. When-Mouse-Enter.
- D. When-Mouse-Click.

Answer: B

Explanation : When-Mouse-Leave mouse movement trigger is used to track mouse moving when moving away from the object. When-Mouse-Enter is used when mouse enters the area of the specified object

---

### **QUESTION 33:**

You need to add an existing chart to the EMP canvas. How would you embed this chart on the form object?

- A. Choose the chart wizard to provide the source file and location on the canvas.
- B. Use the chart wizard to provide the data block source for the data.
- C. Chose file -> import from the menu, select the source file and position on the canvas.
- D. Use the chart item tool in the layout editor to click and drag the location, Choose to create the chart manually and alter the chart property palette to provide the source file.

Answer: D

Explanation : Embedding a chart object on the form is done by using the chart item tool in

the layout editor to click and drag the location. , Choose to create the chart manually and alter the chart property palette to provide the source file

---

**QUESTION 34:**

Which file can be opened to see the structure of the default menu?

- A. MENU.MMX
- B. MENUDEF.MMX
- C. MENUDEF.MMB
- D. DEFMENU.MMX

Answer: C

Explanation : The MENUDEF.MMB file contains the structure of the default menu that can be modified. The MMX file holds the executable module of the menu.

---

**QUESTION 35:**

Payroll application users wants to be able to save a record by pressing a function key. They have complained that having to click on the save button with the mouse slows down data entry. To perform this task you perform a key trigger for the F2 function key that will save a record when pressed. What affect will this change have on the key default functionality?

- A. This change will have no effect on the key's default functionality because it will overwrite the trigger.
- B. The default functionality is replaced by the PL/SQL code in the trigger defined for the key.
- C. Form will determine if the default functionality of the trigger should have precedence and you see appropriate one based action performed by the user.
- D. Key triggers cannot be used to replace the default functionality of function keys.

Answer: B

Explanation : Function keys can have different functionality by placing PL/SQL code on the key trigger for the specified function key. When code is written in the trigger it will replace the default functionality of the function key

---

**QUESTION 36:**

You are creating a new project for the payroll application. The legacy application contains some forms and imports that you want to include in the new application. If you add an existing .FMB file to this project how can you make sure that .FMX is also included?

- A. Set the option to include implicit items.
- B. Generate a new .FMX.

- C. You cannot use pre-existing .FMB files.
- D. Explicitly identify which pre-existing .FMX is dependent on .FMB.

Answer: D

Explanation :

.fmx - contains the executable code of a form module

.fmb - contains the source code of a form module

If you add an existing .FMB file to the project you should explicitly identify which preexisting .FMX is dependent on .FMB

---

**QUESTION 37:**

You have defined all roles necessary for the payroll application. You still need to do some testing on the application and want to disable menu roles security temporarily. Which menu module property should you change?

- A. Menu Module Roles.
- B. Startup Code.
- C. Use Security.
- D. Identification.

Answer: C

Explanation : The Use Security menu module property enables security check for that menu. It can be disabled by changing the value of this property in the menu.

---

**QUESTION 38:**

You are creating a multiform application and need to pass data between forms. Which limitation will you have if you use form parameters as means of passing this data?

- A. Only visible to the current form in the run form session.
- B. Can only have a data type of CHAR.
- C. Can only be used as INPUT parameter.
- D. Length of CHAR parameter is only 64k.

Answer: C

Explanation : Form parameter can only be used as INPUT parameter when opening other forms.

---

**QUESTION 39:**

If the operator initiates a query, when will the PRE-QUERY trigger fire?

- A. After the cursor has moved out of the queried item.
- B. Before the query criteria has been entered.
- C. After the block has been exited.



D. After the query criteria has been entered.

Answer: D

Explanation :

The events that take place during Form Builder query processing are:

- 1.) The Pre-Query trigger fires, if defined, while the form is in Enter Query mode.
- 2.) Form Builder constructs the SELECT statement from block criteria or criteria enter by the operator.
- 3.) The query is performed.
- 4.) Column values are fetched into the base table items in the form creating a record.
- 5.) The record is marked as valid.
- 6.) The Post-Query trigger fires.
- 7.) Item and record validation occurs if the record was modified by a trigger.
- 8.) Step four through seven is repeated until there are no remaining records for the query.

---

**QUESTION 40:**

You are creating the ORDERS form that contains a text item called Date\_Ordered. How could you ensure that when a new record is entered, the Data\_Ordered item displays the current data in DD-MON-YYYY format?

- A. In the Data\_Ordered Item Property Palette, set the Initial Value property to \$\$date\$\$.
- B. In the Data\_Ordered Item Property Palette, set the Default Value property to SYSDATE.
- C. You must use a Pre-Insert trigger to accomplish this task.
- D. You must use a Pre-Commit trigger to accomplish this task.

Answer: C

Explanation : Pre-Insert trigger Manipulate a record prior to its being inserted in the database during the default Post and Commit Transactions process.

---

**QUESTION 41:**

When does external navigation occur?

- A. When the navigation unit is outside the form.
- B. When the cursor input focus changes.
- C. When the input focus goes outside of the Mouse Navigation Limit.
- D. When you click on an item with Mouse Navigable set to No.

Answer: B

---

**QUESTION 42:**

You are creating two calculated items in the ORDER form to display totals for each line item and for the order. Which calculation modes for each calculated item would you use

to accomplish the task?

- A. Summary mode for both items.
- B. Formula mode for both items.
- C. Formula mode for an item that displays the order total, and summary mode for an item that displays the line item total.
- D. Formula mode for an item that displays the line item total, and summary mode for an item that displays the order total.

Answer: D

---

**QUESTION 43:**

How could you associate a data block with more than one frame?

- A. Use the Layout Wizard in reentrant mode to associate the data block with an additional frame.
- B. Alter the Frame value in the Property Palette for the data block.
- C. Use the Data Block Wizard in reentrant mode to associate the data block with an additional frame.
- D. A data block can be associated with only one frame.

Answer: D

---

**QUESTION 44:**

Which triggers can be used to perform additional tasks during the record retrieval process?

- A. Query triggers.
- B. Commit triggers.
- C. Block processing triggers.
- D. Triggers that can be fired in Enter Query mode.

Answer: A

---

**QUESTION 45:**

The EMPLOYEE form contains the CV\_SALARY, CV\_EMP, and CV\_HELP content canvases. Each canvas is displayed in its own window. How could you toggle between the CV\_SALARY and CV\_EMP canvases without closing the CV\_HELP canvas?

- A. Create the CV\_HELP canvas in a modal window.
- B. Create the CV\_SALARY and CV\_EMP canvases in modal windows.
- C. Create all three canvases in modeless windows.
- D. A canvas must be dismissed before another canvas can become active.

Answer: D

---

**QUESTION 46:**

What is true when your form is in Enter-Query mode?

- A. You cannot navigate out of the example record.
- B. You cannot execute the query without entering search criteria.
- C. You cannot exit Enter-Query mode without executing the query.
- D. You cannot query an invalidated item in the current form.

Answer: A

---

**QUESTION 47:**

You created a multi-record block in your form displaying five text items per record. The cursor is in the last field of the first record. The navigation style property has not been altered. You select Field --->Next from the menu.

Where does the cursor navigate?

- A. To the last field of the next block.
- B. To the first field of the next block.
- C. To the first field of the first record.
- D. To the first field of the second record.

Answer: C

---

**QUESTION 48:**

When does transaction processing occur?

- A. When the user selects Action --->Post from the menu.
- B. When the user selects Action --->Rollback from the menu.
- C. When the COMMIT\_FORM built-in is called from a trigger.
- D. When the POST\_CHANGES built-in is called from a trigger.

Answer: C

---

**QUESTION 49:**

Which master detail property would you use to delete the master record, but prevent detailed records from being deleted?

- A. Non-isolated
- B. Cascading

- C. Isolated
- D. Restricted delete

Answer: C

---

**QUESTION 50:**

You need to allow the user to toggle between automatic query and no automatic query using a popup menu. Which built-in could you use in the menu item command to obtain the relationship name?

- A. GET\_RELATION\_PROPERTY
- B. SET\_RELATION\_PROPERTY
- C. GET\_BLOCK\_PROPERTY
- D. GET\_FORM\_PROPERTY

Answer: A

---

**QUESTION 51:**

You are creating the SAL\_INFO data block on the EMP\_QUERY form. The Salary field should only be populated if the logged on user is a manager. Since this query could potentially return a large number of records. You want to limit the records returned to 20 at a time. Which data source type should you base in data block?

- A. From clause query.
- B. Database Table.
- C. Database View.
- D. The client side procedure using the LOV.
- E. Stored procedure using a table of records.
- F. Stored procedure using a RED cursor.

Answer: F

---

**QUESTION 52:**

The Orders form contains the dynamic list items, which you want to be loaded with the values from the queries record group for the items field. Which built-in can you use to populate this list items with the values from the Record group?

- A. RETRIEVE LIST
- B. GET\_LIST\_ELEMENT\_VALUE
- C. POPULATE\_LIST\_WITH\_QUERY
- D. POPULATE\_LIST
- E. CLEAR\_LIST

Answer: D

---

**QUESTION 53:**

When a user attempts to drag and drop an item in the Sales form the cursor property style should appear as BUSY. Which built-in would you use to alter the appearance of the cursor?

- A. SET\_ITEM\_PROPERTY
- B. SET\_APPLICATION\_PROPERTY
- C. GET\_VIEW\_PROPERTY
- D. SET\_VIEW\_PROPERTY
- E. SHOW\_VIEW

Answer: B

---

**QUESTION 54:**

You created a report in form builder and want to set the destination type to File. Where can you set the report destination type?

- A. Use the copy\_report\_output built-in in a trigger.
- B. Set the format in the report object property palette.
- C. Set the report destination type using the report wizard.
- D. Set the format in the form property sheet.

Answer: B

---

**QUESTION 55:**

You are creating a custom menu module and want to use custom username substitution parameter. How must substitution parameters be defined?

- A. User character variable of type CHAR.
- B. Two character variable of type CHAR.
- C. Four character variable of type NUMBER.
- D. Twenty five character variable of type CHAR.

Answer: B

---

**QUESTION 56:**

You are planning a new application and want to limit the use of key triggers where possible. What is one region you would have to use key triggers in the application?

- A. Perform validation using function keys.
- B. Replace default functionality of function keys.
- C. Perform data manipulation using function keys.
- D. Amend navigation using function keys.

Answer: B

---

**QUESTION 57:**

You are working on a complex project that includes many different file types. What is available in the project navigator to allow you to see the source file on which another object is based?

- A. Project view.
- B. Dependency view.
- C. Global registry.
- D. User registry.

Answer: B

---

**QUESTION 58:**

You establish access to menu modules using rules. You have allowed the sales role to access the menu module but prevented access to the update menu item. Which item property would you alter to gray out the menu option for the role?

- A. Item Roles.
- B. Menu Item Roles.
- C. Displays without privilege.
- D. Use Security.
- E. Command Type.

Answer: C

---

**QUESTION 59:**

You are developing the payroll application that contains the SALARY and COMMISSION forms. When a user invoked the COMMISSION form from the SALARY form, the SAL value should be passed to the COMMISSION form. In which form and what time should you define the parameter to accept the value?

- A. Salary form at run time.
- B. Salary form at design time.
- C. Commission for at runt time.
- D. Commission form at design time.

Answer: C

---

**QUESTION 60:**

Which built-in allows you to dynamically change the alert message text?

- A. SET\_ALERT\_MESSAGE
- B. SET\_ALERT\_PROPERTY
- C. CHANGE\_ALERT\_PROPERTY
- D. CHANGE\_MESSAGE\_ALERT

Answer: B

---

**QUESTION 61:**

You want to skip validation on one of the items in a form, so that validation is not performed on that particular item. How could you do this?

- A. Set the item's Item Is Valid property.
- B. Set the item's Automatic Skip property.
- C. Set the item's Database Item property to No.
- D. Set the validation unit to Record instead of Item.

Answer: B

---

**QUESTION 62:**

In the Customer application, you want to display the salesperson's name for each customer. In the CUST block, you create a display item, salesperson. The display item will be populated using a WHEN-VALIDATE-ITEM trigger on the Cust\_id text item. This is the trigger code:

```
SELECT name  
INTO _____  
FROM employee  
WHERE id = :cust.cust_id;
```

Choose the option that best completes the INTO clause.

- A. sales\_person
- B. :sales\_person
- C. cust.sales\_person
- D. :cust.sales\_person

Answer: D

---

**QUESTION 63:**

What are three main components to consider when you design a trigger? (Choose three)

- A. Trigger code.
- B. Trigger type.
- C. Trigger menu.
- D. Trigger scope.
- E. Trigger navigation.
- F. Trigger validation.
- G. Trigger interaction.

Answer: A, B, D

---

**QUESTION 64:**

Which circumstance will cause the Data Block Wizard to display the Master-Detail page?

- A. When you are creating a control block.
- B. When there is an existing block in the form.
- C. When you check the Enforce Data Integrity check box.
- D. When a foreign key exists in the database which relates to the table you are using as a data source.

Answer: B

---

**QUESTION 65:**

In Form Builder you attempt to compile a trigger. You receive a compilation error that gives no clear indication of the problem. What are two likely causes? (Choose two)

- A. Dividing by zero.
- B. Missing semicolon.
- C. Mismatched quotes.
- D. Mistyped variable name.
- E. Trigger defined on wrong item.
- F. Trigger defined at wrong item.

Answer: B, C

---

**QUESTION 66:**

In the Order Entry application, a form contains the ORD\_IN data block. You need to create an item in the data block to display the customer's credit limit. Since users are not permitted to alter a customer's account information, this item should be a read-only



text box.

What is the best method for accomplishing this task?

- A. Create a text Item tool in the Layout Editor to create the item and set the Item Property to 'No'.
- B. Use the Display Item tool in the Layout Editor to create the item and set the Item Property to 'No'.
- C. Use the Display Item tool in the Layout Editor to create the item and set the Column Name Property to the appropriate value.
- D. This task cannot be accomplished because a form module item cannot be a read-only text box.

Answer: B

---

**QUESTION 67:**

When a user updates the Salary item, you want to ensure that the net value is higher than the existing value before it is inserted into the base table. Which trigger would you use?

- A. Pre-Commit
- B. On-Commit
- C. Post-Update
- D. Pre-Update
- E. Post-Form-Commit

Answer: D

---

**QUESTION 68:**

You created a form that has two data blocks. Which two default navigation methods can a user employ to move the cursor from the first block to the second block? (Choose two)

- A. Press the [NEXT BLOCK] function key.
- B. Click an item in the second block with the mouse.
- C. Click the single right-arrow icon on the menu toolbar.
- D. Right-click an item in the first block, and choose Next Block from the pop-up menu.

Answer: A, C

---

**QUESTION 69:**

Which chart style can you use in your form to represent values as the length of the column against the xaxis?

- A. Pie

- B. Bar
- C. Mixed
- D. Column
- E. Line

Answer: B

---

**QUESTION 70:**

What is one advantage of basing a data block on a FROM clause query?

- A. Performing joins, lookups and calculations on the server without having to define a view for everyone.
- B. Enter user defined parameters at run time.
- C. Using any PL/SQL code in the SELECT statement.
- D. Performing query and DML operations using a single SELECT statement using a subquery.

Answer: A

---

**QUESTION 71:**

The account receivable application requires the use of two forms for posting payment transactions. The initiating form calls the second form and has pending changes. In which mode does form builder displays the called form?

- A. Normal mode.
- B. Post only mode.
- C. Commit mode.
- D. Enter query mode.

Answer: B

---

**QUESTION 72:**

Which two built-in would you use to remove the HOUR\_ALARM timer using the TIMER\_ID parameter? (Choose two)

- A. FIND\_TIMER
- B. CREATE\_TIMER
- C. SET\_TIMER
- D. DELETE\_TIMER
- E. GET\_APPLICATION\_PROPERTY

Answer: A, D

---

**QUESTION 73:**

Depending on the user job roles the form needs to display one of the three menus. Which built-in could you use to control which menu displays in a bitmapped environment?

- A. SET\_MENU\_ITEM\_PROPERTY
- B. HIDE\_MEN
- C. SHOW\_MENU
- D. MENU\_REDISPLAY
- E. REPLACE\_MANU

Answer: A

---

**QUESTION 74:**

You are developing a new application and have stored all of your pre-development survey results in MSEXcel. Which project builder component can you use to provide an easy means of access to this application?

- A. Global registry
- B. Launcher
- C. User subclass
- D. Project navigator

Answer: B

---

**QUESTION 75:**

Which reusable developer2000 component could you use to customize the smart class with frequently used object?

- A. Active X Controls.
- B. Calender Class.
- C. Standard Object Library.
- D. Pick List Class.
- E. Wizard Class.
- F. Navigator Class.

Answer: C

---

**QUESTION 76:**

Which three properties add functionality to a text item? (Choose three)

- A. Window
- B. Multi-Line

- C. Wrap Style
- D. Raise on Entry
- E. Execution Style
- F. Case Restriction
- G. Horizontal Scroll Bar

Answer: B, C, F

---

**QUESTION 77:**

Which canvas-view type would you create to provide users an alternative to menu driven applications?

- A. content
- B. stacked
- C. tab
- D. toolbar

Answer: D

---

**QUESTION 78:**

If there is more than one trigger of the same type at different levels, how could you change the firing sequence of the lowest-level trigger?

- A. Define the trigger as a SmartTrigger.
- B. Right-click the trigger to set its priority.
- C. Set the Trigger Style property of the trigger.
- D. Set the Execution Hierarchy property of the trigger.
- E. Set the form module properties to override the default trigger firing sequence in the form.

Answer: D

---

**QUESTION 79:**

Memory conservation is a priority. One application that may allow memory to be conserved is Payroll, because users rarely will use all the Forms items in the Payroll application.

How can you set up the Payroll application to load only the items needed?

- A. Create one form with several data blocks, and limit the navigation cycle to keep less used data blocks from loading.
- B. Create one form with several data blocks, map each data block to a different database table, and display only the items needed.
- C. Allow the Human Resources Department users access only to items that will require

updates.

D. Modularize the application by creating many small forms and grouping frequently used items.

Answer: D

---

### QUESTION 80:

You have created a form with validation set at the record level. Users would like to be able to press a button to cause validation to occur immediately without committing changes or navigating out of the record. Which built-in would you call in the When-Button-Pressed trigger to implement this?

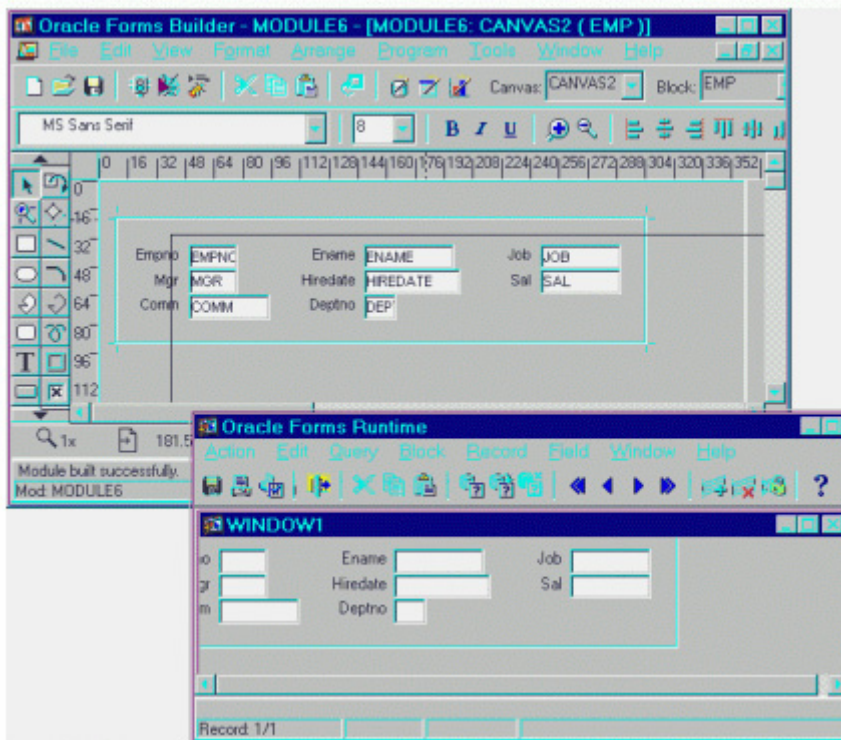
- A. ENTER
- B. NEXT\_ITEM
- C. LOCK\_RECORD
- D. UPDATE\_RECORD
- E. ISSUE\_SAVEPOINT
- F. SET\_BLOCK\_PROPERTY
- G. GET\_RECORD\_PROPERTY

Answer: A

---

### QUESTION 81:

Exhibit.



Examine the form, both in Form Builder and in the run-time form that is depicted as it first comes up. What are the most likely settings for the properties Viewport X Position on Canvas and Viewport Y Position on Canvas?

- A. Viewport X Position 20, Viewport Y Position 60
- B. Viewport X Position 40, Viewport Y Position 30
- C. Viewport X Position 100, Viewport Y Position 10
- D. Viewport X Position 0 (zero), Viewport Y Position 0 (zero)

Answer: B

Explanation: No exhibit provided.

---

**QUESTION 82:**

You created a master-detail form, but users are distracted by the default message that displays during each detail query to show that processing is taking place. Which line of code would you use to keep that message from displaying?

- A. `SYSTEM.MESSAGE_LEVEL:='0';`
- B. `SYSTEM.MESSAGE_LEVEL:='25';`
- C. `SYSTEM.SUPPRESS_WORKING :='TRUE';`
- D. `SYSTEM.SUPPRESS_WORKING :='FALSE';`

Answer: C

---

**QUESTION 83:**

You have created an Orders table form with a master/detail relationship and decide to add some custom code. In which three-relation/handling PL/SQL program unit can you add this code? (Choose three)

- A. `CLEAR_ALL_MASTER_DETAIL`
- B. `QUERY_MASTER_DETAIL`
- C. `CHECK_PACKAGE_FAILURE`
- D. `GET_APPLICATION_PROPERTY`
- E. `NEXT_ITEM`
- F. `ENTER_QUERY`

Answer: A, B, C

---

**QUESTION 84:**

You have created a master detail relationship for the Orders form. Which procedure is automatically created by form builder for this master detail relationship and called from an on-clear details trigger?

- A. QUERY\_MASTER\_DETAILS
- B. GET\_FORM\_PROPERTY
- C. GET\_RELATION\_PROPERTY
- D. CLEAR\_ALL\_MASTER\_DETAILS

Answer: D

---

**QUESTION 85:**

When you originally created the inventory application all inventory items were static in nature. Now that new items are being added to the inventory periodically you want to change the original record group to include any new inventory items that are added. Which built-in can you use to convert this normal query record group into a query record group?

- A. POPULATE\_GROUP\_WITH\_QUERY
- B. POPULATE\_GROUP
- C. CREATE\_GROUP\_FROM\_QUERY
- D. SET\_GROUP\_SELECTION

Answer: A

---

**QUESTION 86:**

The general ledger application contains a form that uses Oracle graphics to display a pie chart for operating expenses by department. The user would be able to enter a specified accounting period to be displayed. Which built-in could you use to populate the record group to display data for a specified accounting period?

- A. CREATE\_GROUP\_FROM\_QUERY
- B. POPULATE\_LIST\_WITH\_QUERY
- C. FIND\_GROUP
- D. POPULATE\_GROUP

Answer: C

---

**QUESTION 87:**

You are building an application for the Telemarketing department. You want to pace the Sales Reps through a questionnaire using alerts and a timer. Which built-in could you use to control the timer so that it expires every two minutes?

- A. GET\_TIMER
- B. CREATE\_TIME
- C. DELETE\_TIMER

D. FIND\_TIMER

Answer: B

---

**QUESTION 88:**

Which menu item type would you create for an item that has pre-defined functionality such as cut, copy or paste?

- A. Check
- B. Radio
- C. Magic
- D. Macro
- E. Plane

Answer: C

---

**QUESTION 89:**

At which level should you define a WHEN-WINDOW-ACTIVATED trigger?

- A. FORM
- B. BLOCK
- C. ITEM
- D. MENU

Answer: A

---

**QUESTION 90:**

The payroll application utilizes form builder built-in. How should you store the PL/SQL code to provide optimal performance?

- A. Partition the application.
- B. Store the entire application on the server site.
- C. Store the PL/SQL as an attached library on the Oracle server.
- D. Store the PL/SQL code in the database triggers.

Answer: C

---

**QUESTION 91:**

Which restricted built-in can you use in the multiform application to allow the user to freely navigate between two forms toggling back and forth to insert data in form2 and return to original form?



- A. OPEN\_FORM
- B. CALL\_FORM
- C. CLOSE\_FORM
- D. EXIT\_FORM

Answer: A

---

**QUESTION 92:**

Which object can you create to invoke a LOV?

- A. button
- B. image item
- C. list item
- D. combo box

Answer: A

---

**QUESTION 93:**

The primary key of the ORD table is made up of two columns. You do not want to validate the two corresponding items in the ORD\_DATA data block until the user attempts to leave the data block. How could you control when validation is initiated?

- A. Use the two When-Validate-Item triggers at the data block level.
- B. Use a When-Validate-Record trigger at the data block level.
- C. You must use a When-Validate-Item trigger at the form level.
- D. You must validate each item at the item level.

Answer: B

---

**QUESTION 94:**

Which two statements about list items are true? (Choose two)

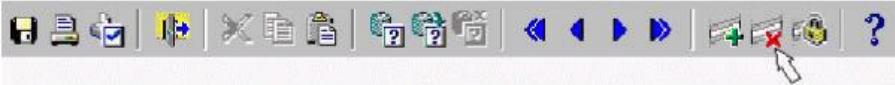
- A. A list item must have an access key.
- B. A list item can be true, false, or null.
- C. A list item is an alternative to a radio group.
- D. A value in a list item can be set programmatically.
- E. A list item can be used to select more than one value at the same time.

Answer: C, D

---

**QUESTION 95:**

Click the Exhibit button.



What happens when a user clicks the red X icon on the default menu toolbar?

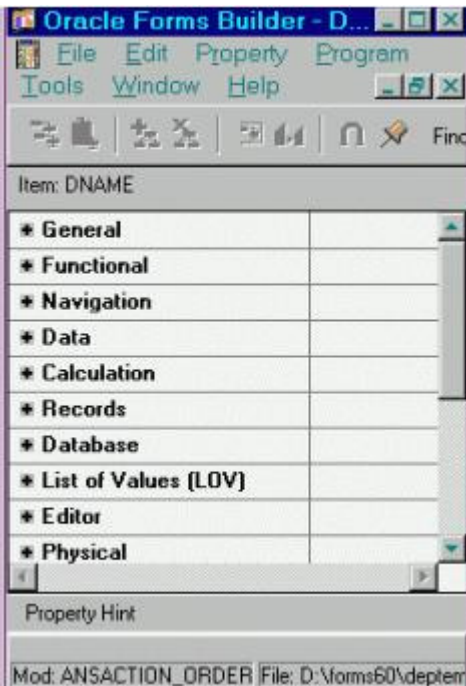
- A. The current record is removed from the block.
- B. The current record is deleted from the database.
- C. The current record is blanked out to enable entry of new data.
- D. The current record is placed at the end of the block's list of records.

Answer: B

---

### QUESTION 96:

Click the Exhibit button.



Which property group in the Property Palette of a text item would you expand to show the properties that control the way the data is displayed and entered?

- A. Data
- B. Editor
- C. Records
- D. Database
- E. Functional
- F. Calculation

Answer: C

**QUESTION 97:**

You are customizing default functionality of an image item so that the image displays when a user single-clicks the item. Which trigger would you use to accomplish the task?

- A. When-New-Item-Instance
- B. When-Image-Activated
- C. When-Image-Pressed
- D. When-Validate-Item

Answer: C

---

**QUESTION 98:**

You are building a payroll application and are planning to use as many generic programming units as possible. Which built-in can you use across the application to obtain the name of the current form for navigation purposes?

- A. GET\_APPLICATION\_PROPERTY
- B. GET\_FORM\_PROPERTY
- C. GET\_BLOCK\_PROPERTY
- D. GET\_ITEM\_PROPERTY

Answer: A

---

**QUESTION 99:**

The menu tool bar icons do not in the order that you want. Which two ways can you change the order of the items? (Choose two)

- A. Alter the order of the menu items in the object navigator.
- B. Change the order of the menu items in the menu editor.
- C. Click and drag the icons in the layout editor to the appropriate position.
- D. Cut and paste in the layout editor to position the icons.
- E. Use the select tool in the menu editor to position the icons.

Answer: A, B

---

**QUESTION 100:**

You establish access to menu modules using roles. While testing the application you need access to all menus in the Sales form module for all the rows. Which method will overwrite the menu modules roles property to allow you to access all the menu items?

- A. Disable the values for the menu module roles property.
- B. Set the use security value in the form module property palette to True.

- C. Set the use security value in the form module property palette to False.
- D. Set the use security value in the menu module property palette to true.
- E. Set the use security value in the menu module property palette to False.

Answer: E

---

**QUESTION 101:**

You have built a new pay roll application and want to control user access to the various menus and forms. Which Oracle server feature can you company's-ordinate with form builder to control access and set privileges within the menu application?

- A. DDL
- B. Locking
- C. Built-in database packages.
- D. Database Rolls.
- E. Declarative integrity constraints.

Answer: D

---

**QUESTION 102:**

Which reusable developer2000 component could you use to provide a tool to allow users quick access to form modules by listing them in an explorer style interface?

- A. Active X controls.
- B. Calender Class.
- C. Standard Object Library.
- D. Pick List Class.
- E. Wizard Class.
- F. Navigator Class.

Answer: F

---

**QUESTION 103:**

Which two properties specify coordinates of the stacked canvas viewport relative to upper left corner of the stacked canvas? (Choose two)

- A. Viewport X Position
- B. Viewport Y Position
- C. Viewport X Position on Canvas
- D. Viewport Y Position on Canvas

Answer: A, B

---

**QUESTION 104:**

You have created a form that has a block to create an address and perform a mail merge with a selected Word document. You would like to use this block in other form. How could you package this block and its canvas for reuse?

- A. Smart Class
- B. Object Group
- C. Record Group
- D. Property Class
- E. PL/SQL Library

Answer: B

---

**QUESTION 105:**

Which property type can be created by overriding a property set by a property class?

- A. Block
- B. Variant
- C. Item
- D. Inherited

Answer: B

---

**QUESTION 106:**

You created the EMP\_DATA data block in the EMPLOYEE form based on all the columns of the EMPLOYEE form based on all the columns of the EMP table. After viewing the prototype, users are asking that you remove the SALARY column from the layout. This column is used in the data block to perform bonus calculations. How would you remove this column from the layout while leaving it in the data block?

- A. You must delete the EMP\_DATA data block and recreate it.
- B. Select the Salary item in the Layout Editor and press DELETE.
- C. You must remove the column from the data block to remove it from the layout.
- D. Select the frame surrounding the EMP\_DATA data block in the Layout Editor, click the Layout Wizard tool, and remove the SALARY column from the Displayed Item list.
- E. Select the EMP\_DATA data block in the Object Navigator, choose Tools->Data Block Wizard, and remove the SALARY column from the included list.  
The SALARY column will automatically be removed from the layout.
- F. Double-click the EMP\_DATA data block in the Object Navigator to launch the Data Block Wizard, remove the SALARY column from the included columns, enter the Layout Wizard, and remove the SALARY column from the Displayed Items list.

Answer: F

---

**QUESTION 107:**

How would you associate database tables with form objects in order to access the tables from a form?

- A. Create a data block and base it on all database tables you need to access.
- B. Create a control block and associate its items with columns from database tables.
- C. Create a data block for each database table you need to access.
- D. Create a control block and associate its items with data blocks that are based on database tables.

Answer: C

---

**QUESTION 108:**

You have written some generic PL/SQL code which loops through the invoked form, getting and setting the global variables in the form. Which two built-ins would you use in this code to get and set these variables and their values? (Choose two)

- A. COPY
- B. NAME\_IN
- C. GET\_ITEM\_PROPERTY
- D. GET\_BLOCK\_PROPERTY
- E. GET\_PARAMETER\_LIST
- F. GET\_APPLICATION\_PROPERTY

Answer: A, B

---

**QUESTION 109:**

You can use a When-List-Activated trigger to trap a user section. For which list item style can you do this?

- A. T-list
- B. pop-list
- C. combo box
- D. any style

Answer: A

---

**QUESTION 110:**

Which statements are true for content canvas-views? (Choose two)

- A. A content canvas-view is always created implicitly.
- B. A content canvas-view always completely fills its window.
- C. A content canvas view sits on top of a stacked canvas-view.
- D. If a content canvas-view is too big, the window needs to be resized.
- E. There must be at least one content canvas-view for each window in an application.

Answer: B, E

---

**QUESTION 111:**

You created a When-Validate-Item trigger for every item in the EMP\_DATA data block. When you run the form in Debug mode, how could you display the ongoing messages about trigger execution?

- A. In the Preference dialog, check the Debug Messages check box.
- B. From the menu, select Program -> Debug Mode to set debug messages to On.
- C. You cannot monitor triggers when they fire at runtime.
- D. You cannot display the messages about trigger execution.

Answer: A

---

**QUESTION 112:**

Which item type can you edit with the Editor object?

- A. list items
- B. text items
- C. image items
- D. graphics items
- E. hierarchical tree items

Answer: B

---

**QUESTION 113:**

You have created two separate data blocks on two content canvases. Users complain that when they navigate to block two, they can no longer see the block one data. How could you enable them to see both canvases at once?

- A. Create a new window and assign one of the canvases to it.
- B. Set the canvas property Raise on Entry to No for both canvases.
- C. Set the viewpoint size large enough so that both canvases can be seen.
- D. Put a scroll bar on the window so that users can scroll back and forth between the canvases.

Answer: A

---

**QUESTION 114:**

Which two data block properties can be set to abort a long running query? (Choose two)

- A. Number of Records Buffered.
- B. Numbers of Records Displayed.
- C. Query Array Size.
- D. Maximum Query Time.
- E. Query All Records.
- F. Maximum Records Fetched.

Answer: D, F

---

**QUESTION 115:**

In a control block on the ORD canvas, there is a CUST\_DATA button. When pressed, the button activates this When-Button-Pressed trigger:

```
GO BLOCK('CUST_DATA');  
EXECUTE_QUERY;
```

What will happen when this trigger fires?

- A. The cursor will navigate to the CUST\_DATA data block and execute a query if default values have been provided.
- B. The cursor will navigate to the CUST\_DATA data block and execute a query.
- C. The cursor will navigate to the CUST\_DATA block, but the query will not execute because search values have not been provided.
- D. An error will occur because the trigger is syntactically incorrect.
- E. An error will occur because you cannot use the When-Button-Pressed trigger to navigate between data blocks.

Answer: B

---

**QUESTION 116:**

You have created a master-detail form based on the DEPT and EMP tables. When there are no employees in a department, you want to display a different message to the user in place of the informative message FRM-40350 Query caused no records to be retrieved. You code a block-level ON-ERROR trigger on the EMP block with this code:

```
IF ERROR CODE = 40350 THEN  
MESSAGE ('There are no employees in this department');  
Else  
MESSAGE(ERROR_TYPE || '-' || TO_CHAR(ERROR_CODE) || ':' )
```



```
|| ERROR_TEXT);  
END IF;
```

When you run the form and navigate to a department which has no employees, the default FRM-40350 message appears, rather than the message you coded. How should you correct this?

- A. You should check for FORM\_SUCCESS in the trigger.
- B. You should use an ON-MESSAGE trigger and MESSAGE\_built-in functions.
- C. You should define the trigger at the form level, rather than the block level.
- D. You should raise a FORM\_TRIGGER\_FAILURE exception when the error is encountered.

Answer: B

---

#### **QUESTION 117:**

Which two built-ins allow you to interact programmatically with a LOV? (Choose two)

- A. SHOW\_LOV
- B. LIST\_VALUES
- C. REFRESH\_LOV
- D. SELECT\_VALUE
- E. POPULATE\_LOV

Answer: A, B

---

#### **QUESTION 118:**

Which two operations create a text item? (Choose two)

- A. Use the Create icon in the Layout Editor.
- B. Convert an existing item into a text item by setting its item Type property.
- C. Use the text item tool in the Object Navigator.
- D. Use the text item tool in the Layout Editor.
- E. Select Field--->New--->Text item from the menu.

Answer: B, D

---

#### **QUESTION 119:**

Which data type does the SHOW\_ALERT built-in return?

- A. CHAR
- B. NUMBER
- C. VARCHAR2
- D. BOOLEAN

Answer: B

---

**QUESTION 120:**

Which five events could cause a trigger to fire? (Choose five)

- A. committing changes
- B. getting an error
- C. clicking a button
- D. executing a query
- E. programmatically navigating to a different block
- F. programmatically setting an item's visual properties

Answer: A, B, C, D, E

---

**QUESTION 121:**

Which built-in subprogram can be used to return the contents of a variable as an indirect reference?

- A. NAME\_IN
- B. FIND\_ITEM
- C. GET\_ITEM\_PROPERTY
- D. SET\_ITEM\_PROPERTY

Answer: A

---

**QUESTION 122:**

Which trigger can you use to ensure that no dependent detail rows have been inserted by another user since the master record was marked for deletion from a form?

- A. Post-Insert
- B. Pre-Update
- C. Post-Delete
- D. Pre-Delete

Answer: D

---

**QUESTION 123:**

Which two built-ins can initiate navigation programmatically? (Choose two)

- A. UP
- B. GO\_FORM

- C. NEW\_BLOCK
- D. CLOSE\_FORM
- E. SCROLL\_BLOCK

Answer: A, B

---

**QUESTION 124:**

Which three options does the Data Block Wizard allow you to select as a data source for a block? (Choose three)

- A. view
- B. table
- C. no data source
- D. stored procedure
- E. table of records
- F. FROM clause query
- G. Transactional trigger

Answer: A, B, D

---

**QUESTION 125:**

Which dialog box allows you to enter complex search conditions using multiple variables?

- A. query where
- B. complex
- C. restricted
- D. unrestricted

Answer: A

---

**QUESTION 126:**

How can you display both the CV\_SALARY and CV\_EMP content canvases at the same time?

- A. Assign both content canvasses to the same window.
- B. Assign each of the content canvasses to separate modeless windows.
- C. You must display both canvases through the same window.
- D. You cannot display two content canvases at the same time.

Answer: B

---

**QUESTION 127:**

You created a data block that contains more items than the window can display. When you scroll the window to display items outside the window frame, important items are out of view. What type of canvas can you use to create a scrolling region in the window?

- A. tab
- B. content
- C. stacked
- D. vertical toolbar
- E. horizontal toolbar

Answer: C

---

**QUESTION 128:**

The Payroll application is causing excessive network traffic because users are querying the database for a large amount of records. You determine that when a user executes a query from the EMPLOYEE form, more records are returned than are needed. To help users streamline the search criteria, you want to force them to fill in at least two text items before the query will execute.

Which type of trigger would you use to accomplish this task?

- A. Key-
- B. Upon-
- C. Pre-
- D. Post-
- E. When

Answer: C

---

**QUESTION 129:**

Which statement is true?

- A. A window can have only one content canvas.
- B. A window must have at least one content canvas.
- C. A content canvas can be assigned to multiple windows.
- D. A form can contain multiple windows, but only one content canvas.

Answer: B

---

**QUESTION 130:**

While running the EMPLOYEE form in debug mode, you would like to automatically bring up the PL/SQL debugger only if the salary in the current employee's record

exceeds \$5000. How can you accomplish this?

- A. Set a breakpoint.
- B. Enable debug messages.
- C. Define a debug trigger.
- D. This cannot be done automatically, you would need to select Help-->Debug from the menu when you notice a salary greater than \$5000.

Answer: C

---

**QUESTION 131:**

You have coded w WHEN-NEW-FORM-INSTANCE trigger as follows:

```
go_block('dept');  
go_setup; -- program unit to set window properties  
execute_query;
```

How can you ensure that a query does not execute if navigation to the DEPT blocks fails?

- A. Change line 2:  
if not FORM\_SUCCESS then  
raise FORM\_TRIGGER\_FAILURE;  
end if;  
do\_setup; -- program unit to set window properties
- B. Change line 3:  
if FORM\_SUCCESS then  
execute\_query;  
end if;
- C. Change line 2:  
if ERROR\_CODE then  
raise FORM\_TRIGGER\_FAILURE;  
else  
execute\_query;  
end if;
- D. No changes is needed; if GO\_BLOCK fails, the trigger stops processing at that point.

Answer: A

---

**QUESTION 132:**

In a form where users will update multiple items in each record, what is the effect of changing the validation unit from Item to Record?

- A. Validation is performed more frequently.
- B. Validation is performed less frequently.
- C. When-Validate-Item triggers do not fire.

D. Item validation occurs after record validation.

Answer: B

---

**QUESTION 133:**

You would create a customized Editor object in a form so you could edit \_\_\_\_ .

- A. Text items at run time.
- B. Text items at design time.
- C. A layout of form objects at run time.
- D. A layout of forms object at design time.

Answer: A

---

**QUESTION 134:**

At which level has a validation already occurred when a When-Validate-Record trigger is fired?

- A. form
- B. item
- C. block
- D. record

Answer: B

---

**QUESTION 135:**

What does Forms do when a POST-QUERY trigger populates an item?

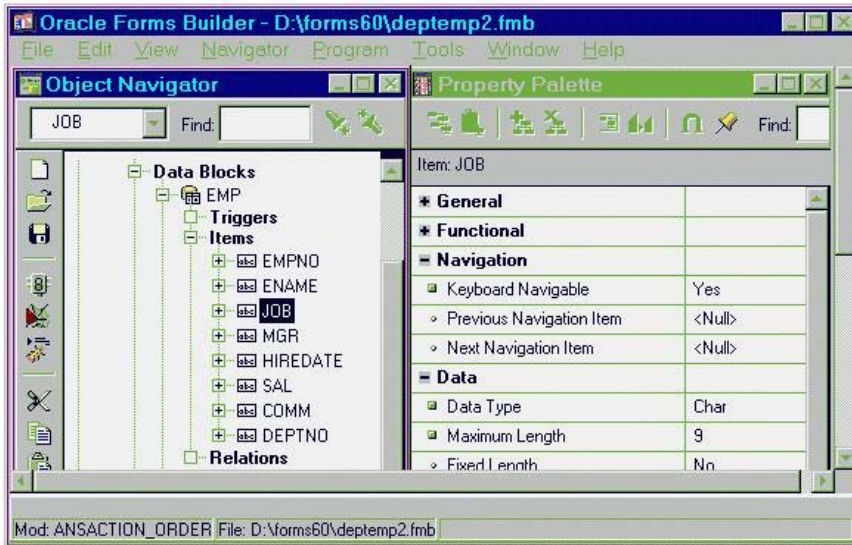
- A. validation
- B. navigation
- C. Suspend query execution until the same record is populated.
- D. Display the system alert to commit or rollback pending changes.

Answer: A

---

**QUESTION 136:**

Exhibit:



You want to design this form so that the cursor skips over the MGR item if the user presses [Tab] when the cursor is on the JOB item. What are two ways you could implement this functionality? (Choose two)

- A. Set the Keyboard Navigable property on the MGR item to NO.
- B. Set the Keyboard Navigable property on the JOB item to NO.
- C. Set the Next Navigation Item property on the JOB item to HIREDATE.
- D. Set the Previous Navigation Item property of the HIREDATE item to JOB.

Answer: A, C

### QUESTION 137:

A control blocks is a form block that \_\_\_\_\_.

- A. Does not have items that allow input from users.
- B. Can have items relates to columns within database tables.
- C. Is a main block in the form, and it controls other blocks in the form.
- D. Is not associated with any database table, and its items do not relate to any columns within any database table.

Answer: D

### QUESTION 138:

You create a tab canvas, which includes several pages, and you want to set the labels for these pages programmatically. Which two built-ins can you use to get and set these labels at runtime? (Choose two)

- A. SET\_TAB\_PAGE\_PROPERTY
- B. GET\_TAB\_PROPERTY

- C. GET\_TAB\_PAGE\_PROPERTY
- D. GET\_PAGE\_PROPERTY
- E. SET\_TAB\_PROPERTY
- F. SET\_PAGE\_PROPERTY

Answer: A, C

---

**QUESTION 139:**

How would you handle null values in a radio group?

- A. Ignore the null value.
- B. Assign the null value its own radio button.
- C. Use an item list instead of a radio button.
- D. You cannot use a radio group with null values.

Answer: B

---

**QUESTION 140:**

Which two item properties' settings affect the standard checks performed during item validation? (Choose two)

- A. Font Name
- B. Format Mask
- C. Conceal Data
- D. Case Restriction
- E. Lowest Allowed Value
- F. Number of Items Displayed

Answer: B, E

---

**QUESTION 141:**

You are creating summary items that summarize the same item in a data block by performing different functions, such as Sum, Avg, Max, and Min. Design rules require you to place summary items in a control block.

Which properties should be set in the control and data blocks to enable your task?

- A. The Single Record property must be set to Yes for the control block, and the Query All Records property must be set to Yes for the data block.
- B. The Number of Records Displayed property must be set to Yes for the control block, and the Number of Records Buffered property must be set to All for the data block.
- C. The Query All Records property must be set to Yes for the data block, and the Precompile Summaries property must be set to Yes for the control block.
- D. The Query All Records property must be set to Yes for the control block, and the



Precompile Summaries property must be set to Yes for the data block.

Answer: A

---

**QUESTION 142:**

Which built-in subprogram allows you to open another form without passing control to it immediately?

- A. CALL\_FORM
- B. OPEN\_FORM
- C. NEW\_FORM
- D. FIND\_FORM

Answer: B

---

**QUESTION 143:**

Which statement is true about using built-ins in Forms applications?

- A. Unrestricted built-ins do not affect logical or physical navigation, and can be called from any form trigger or from any database trigger.
- B. Restricted built-ins affect navigation in your form, and can be called only from database triggers and stored procedures.
- C. Unrestricted built-ins do not affect logical or physical navigation, and can be called from any form trigger or from any subprogram.
- D. Restricted built-ins affect navigation in your form, and can be called only from form triggers while navigation is occurring.

Answer: C

---

**QUESTION 144:**

You need to determine the current visible record in the top of a block. Which built-in subprogram can you use?

- A. GET\_RELATION\_PROPERTY
- B. GET\_RECORD\_PROPERTY
- C. GET\_ITEM\_PROPERTY
- D. GET\_BLOCK\_PROPERTY

Answer: D

---

**QUESTION 145:**

You create a form module for the Order Entry application. It contains the CV\_ITEM

canvas with a Date\_Ordered text item. You alter the Date\_Ordered text item so that the Canvas property is unspecified, but left the Visible property as the default. Where will the Date\_Ordered item appear?

- A. It will appear on the CV\_ITEM canvas because the Visible property will override the Canvas property at runtime.
- B. It will appear in the window at runtime, but outside the CV\_ITEM canvas.
- C. It will not appear in the Layout Editor or at runtime.
- D. It will appear in the Layout Editor, but it will not appear at runtime.

Answer: C

---

**QUESTION 146:**

Which statement about system messages is true?

- A. The message level and severity are unrelated.
- B. More critical system messages have higher severity levels.
- C. You can suppress messages as long as the level is greater than 25.
- D. A message level of 0 (zero) suppresses all except the most critical messages.

Answer: B

---

**QUESTION 147:**

You want to exercise more control over your queries at run time. Which statement is true about actions you can do during query processing?

- A. You cannot change the constructed SELECT statement.
- B. You can override any part of the constructed SELECT statement by resetting the SYSTEM.LAST\_QUERY variable and resume the process by calling the SELECT\_RECORDS built-in procedure in the Pre-Query trigger.
- C. You can determine which item should be included in a query by setting its QUERYABLE property to Yes in the Pre-Query trigger.
- D. You can dynamically change query conditions in the Example Record for each record to be fetched next by examining the current record in the Post-Query trigger.

Answer: A

---

**QUESTION 148:**

Under which two conditions will a trigger fail? (Choose two)

- A. When an unhandled exception occurs.
- B. When you raise the WHEN OTHERS exception.
- C. When a trigger is defined at the wrong scope.

- D. When you raise the FORM\_TRIGGER\_FAILURE exception.
- E. When the PL/SQL editor displays a compilation error.

Answer: A, D

---

**QUESTION 149:**

Which built-in invokes the LOV that is attached to the current text item in the form?

- A. SHOW\_LOV
- B. LIST\_VALUES
- C. REFRESH\_LOV
- D. POPULATE\_LOV

Answer: B

---

**QUESTION 150:**

The Navigation Style property is set to Change Record for a data block. What happens to the cursor when you reach the end of the current record in the block?

- A. The cursor moves to the first record of the previous adjacent data block.
- B. The cursor moves to the previous record of the same data block.
- C. The cursor moves to the next record at the same data block.
- D. The cursor moves to the first record of the next adjacent data block.

Answer: C

---

**QUESTION 151:**

You create a multi-record block. The user requests that the record with input focus be displayed with a red background and white foreground. You create a visual attribute, red\_white, for this purpose.

Which block property do you set to accomplish this task?

- A. Records Displayed
- B. Reference Information
- C. Update Changed Columns
- D. Current Record Attribute

Answer: C

---

**QUESTION 152:**

Which is an example of external navigation?

- A. With the cursor in Item A, you click in item B; the cursor moves to item B.
- B. You press [Commit]; Forms exits the current item, record and block, and then begins commit processing.
- C. You click a button to open and activate a new form; Forms exits the current item, record, block, and form, and then enters the new form, block, record, and item.
- D. You press [Next Block]; Forms exits the current item, record, and block, and then enters the new block, record, and item.

Answer: A

---

**QUESTION 153:**

A user wants an LOV to be invoked automatically each time the cursor enters a text item to which the LOV is associated. What are three ways to resolve this request? (Choose three)

- A. Set the Automatic Display property to Yes for the LOV.
- B. Set the Automatic Refresh property to Yes for the LOV.
- C. Create a Key-Listval trigger for the text item and call the LIST\_VALUES built-in.
- D. Create a When-New-Item-Instance trigger for the text item and call the LIST\_VALUES built-in.
- E. Create a When-New-Item-Instance trigger for the text item and call the DO\_KEY('LIST\_VALUES') built-in.

Answer: A, D, E