



Exam : 050-691

Title : Advanced Novell Network Management:  
Netware 6.5

Ver : 11.11.08

---

**QUESTION 1:**

Which RAID levels can be implemented with NSS? (Choose 2.)

- A. 0
- B. 1
- C. 2
- D. 3
- E. 4
- F. 5
- G. 6
- H. 7

Answer: A,B

---

**QUESTION 2:**

Which method allows you to increase the amount of storage space on a server without adding more storage devices?

- A. Overbook the storage pool.
- B. Increase the size of the storage pool.
- C. Decrease the size of the storage pool.
- D. Recreate the partitions that a storage pool contains.

Answer: A

---

**QUESTION 3:**

Your NetWare 6.5 server has been assigned the DNS name of da1.da.com. Which URL would you use in a browser window to access the iMonitor service on this server?

- A. http://da1.da.com:8009/nds-summary
- B. http://da1.da.com:8009/edir-summary
- C. https://da1.da.com:8009/nds-summary
- D. https://da1.da.com:8008/nds-summary
- E. https://da1.da.com:8009/edir-summary
- F. https://da1.da.com:8008/edir-summary

Answer: C

---

**QUESTION 4:**

You want to split your DATA volume at the DATA:\USERS subdirectory level to

the VOL1 volume on DA1. DA1 is located in the .Contractors.DA container in the DA-TREE tree. Which command, when issued from the server console, will do this?

- A. VLMN SPLIT DATA:\USERS VOL1
- B. VOLMN SPLIT DATA:\USERS VOL1
- C. VLMN SPLIT DATA:\USERS VOL1 DA1.Contractors.DA.DA-TREE
- D. VLMN SPLIT DATA:\USERS VOL1 .DA1.Contractors.DA.DA-TREE.
- E. VOLMN SPLIT DATA:\USERS VOL1 .DA1.Contractors.DA.DA-TREE
- F. VOLMN SPLIT DATA:\USERS VOL1 .DA1.Contractors.DA.DA-TREE.

Answer: F

---

**QUESTION 5:**

When a DFS junction is created, the VLDB assigns the junction a unique ID. Where is this unique ID stored? (Choose 2.)

- A. In the VLDB
- B. In ConsoleOne
- C. In the volume's ACL
- D. In the NetWare Registry
- E. In the server's eDirectory object
- F. In the volume's eDirectory object
- G. In the Registry of the client workstations

Answer: A,F

---

**QUESTION 6:**

While installing the Branch Office Appliance software, you are prompted to save the configuration to a diskette that can be used later during the installation of other Appliances. If you choose to do so, what filename is the configuration saved under?

- A. AUTOEXEC.NCF
- B. AUTOLOAD.CNF
- C. AUTOLOAD.NBO
- D. NBOCONFIG.NCF
- E. NBOCONFIG.TXT
- F. AUTOCONFIG.NCF

Answer: C

---

**QUESTION 7:**

While migrating a NetWare 5.1 server to NetWare 6.5 using a Windows 2000 Professional workstation with Novell Client 4.83 installed, the migration fails. Given

that the destination server has Universal Password deployed, what is the cause of the problem?

- A. Universal Password requires Novell Client 4.9 or later.
- B. Windows 2000 isn't compatible with Universal Password.
- C. The Migration Wizard isn't compatible with Windows 2000 Professional.
- D. NMAS must be disabled on the Novell Client 4.83 to be compatible with Universal Password.
- E. Novell Client 4.83 requires NCI 2.0.2 or later installed to be compatible with Universal Password.

Answer: A

---

### QUESTION 8:

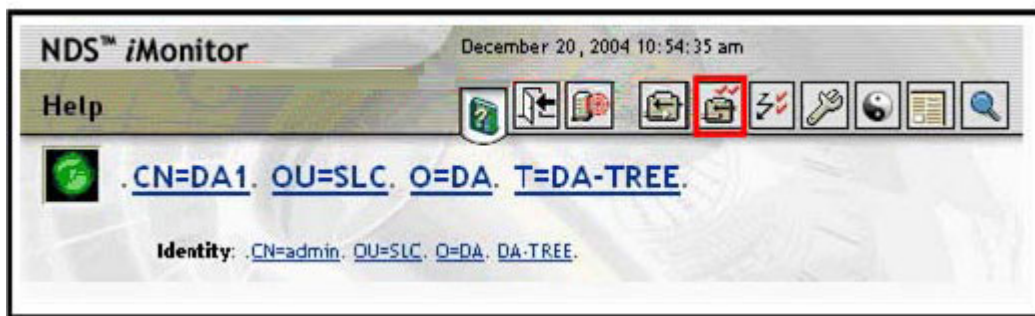
HOTSPOT

Exhibit:



Click on the option that will allow you to check the version of eDirectory on a server.

Answer:

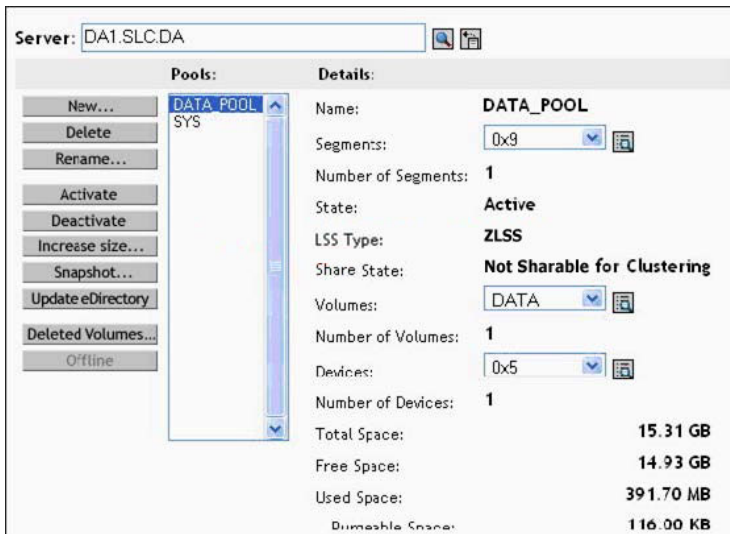


---

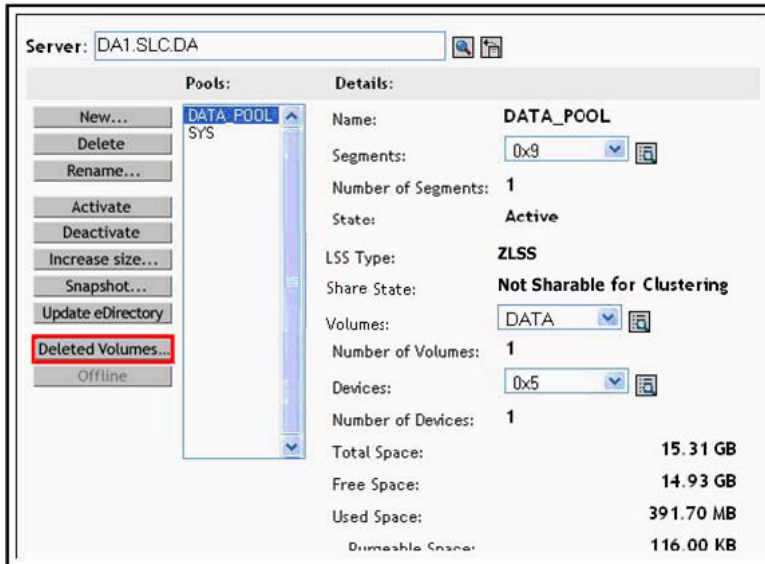
### QUESTION 9:

HOTSPOT

You need to restore an NSS logical volume that was deleted, but has not yet been purged.



Answer:



#### QUESTION 10:

Assuming the CD drive in your workstation is assigned drive letter D, where is the installation file for the Server Consolidation Utility located?

- A. D:\NWSC.EXE
- B. D:\SERVCONS.EXE
- C. D:\TOOLS\NWSC.EXE
- D. D:\TOOLS\SERVCONS.EXE
- E. D:\PRODUCTS\SERVCONS\NWSC.EXE
- F. D:\PRODUCTS\SERVCONS\SERVCONS.EXE

Answer: E

---

**QUESTION 11:**

You're re-installing the Appliance software on your server. What will happen to your existing user data?

- A. All existing data will be lost when the appliance re-images the drive.
- B. The installation program will ask if you want to delete or preserve the existing data.
- C. The installation program will prompt you that the Appliance software already exists and will exit.
- D. The installation program will save the existing data in the Sys:\System.bak file on the Appliance.
- E. The existing data will be detected and copied to a new partition where it can be accessed when the installation is complete.

Answer: B

---

**QUESTION 12:**

The DirXML driver is comprised of 2 components. What are they? (Choose 2.)

- A. Join Engine
- B. XML Interface
- C. Publisher Filter
- D. Subscriber Filter
- E. eDirectory Interface
- F. Application Native Interface

Answer: B,F

---

**QUESTION 13:**

Which preconfigured report searches the entire tree, communicates with every NetWare server it finds, and reports errors?

- A. Agent Health
- B. Obituary Listing
- C. Object Statistics
- D. Server Information
- E. Service Advertising

Answer: D

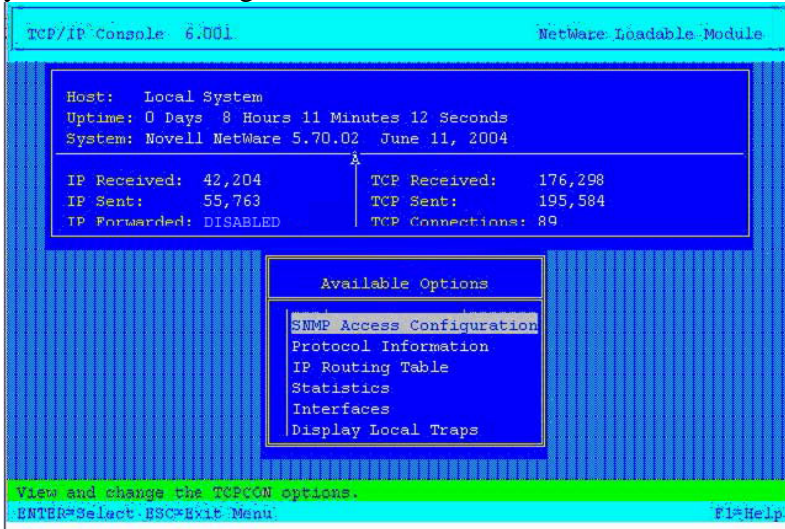
---

**QUESTION 14:**

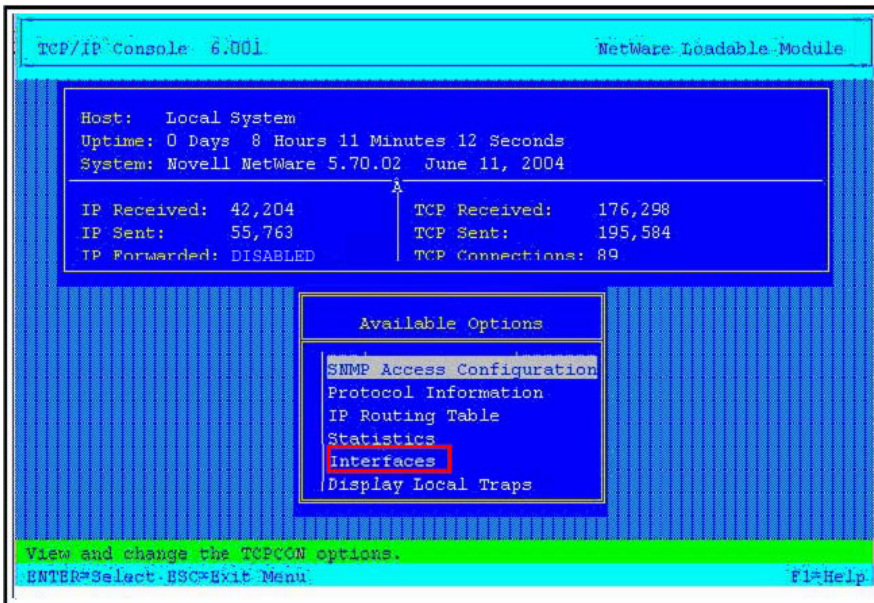
HOTSPOT



Click the TCPCON option you would select if you wanted to view the MTU size your server is using.



Answer:



### QUESTION 15:

You have an NSS pool named APPS\_POOL. You have taken 4 snapshots of it. What is the default name assigned by NSS to the 4th snapshot of the pool?

- A. APPS\_POOL4
- B. APPS\_POOL-4
- C. APPS\_POOL\_4
- D. APPS\_POOL\_S4

- E. APPS\_POOL\_S\_4
- F. APPS\_POOL\_4\_S

Answer: D

---

**QUESTION 16:**

You're troubleshooting a routing problem in your organization's network. To test a hypothesis, you need to run the TRACERT command from one of your Windows XP workstations to trace the route to corp.da.com with the maximum number of router hops constrained to 4. Which command should you use to do this?

- A. TRACERT -4 corp.da.com
- B. TRACERT corp.da.com -4
- C. TRACERT -H 4 corp.da.com
- D. TRACERT -R 4 corp.da.com
- E. TRACERT -A 4 corp.da.com
- F. TRACERT corp.da.com -D 4

Answer: C

---

**QUESTION 17:**

Which command would you issue from the console of a NetWare 6.5 server to test its DNS resolver configuration?

- A. CONFIG
- B. TCPCON
- C. IPCONFIG
- D. IFCONFIG
- E. NSLOOKUP
- F. DNSCONFIG
- G. BINDCONFIG

Answer: E

---

**QUESTION 18:**

Your organization has implemented ZENworks for Servers Tiered Electronic Distribution with Nterprise Branch Office. To support this configuration, which IP port must be kept open on your organization's firewall?

- A. 20
- B. 21
- C. 631
- D. 873



- E. 1299
- F. 2222

Answer: E

---

**QUESTION 19:**

You've configured a Branch Office system to use automatic user provisioning. When users attempt to log into the Appliance for the first time, authentication fails. The Appliance is running on a server with 512 MB of RAM, a Pentium III 1.13 GHz CPU, and a 40 GB hard disk drive. The users are using Windows 2000 Professional with Novell Client 4.9 installed. What is causing the problem?

- A. The Appliance requires at least 1 GB of RAM.
- B. The Appliance requires a Pentium IV or later CPU.
- C. Novell Client 4.9 isn't compatible with Universal Password.
- D. The workstations must be upgraded to Windows XP Professional.
- E. NCI must be disabled on the Novell Client 4.9 before the first login.
- F. Windows 2000 Service Pack 4 must be applied to each workstation.
- G. NMAST must be disabled on the Novell Client 4.9 before the first login.
- H. Novell Client 4.9 Support Pack 1 must be applied to each workstation.

Answer: G

---

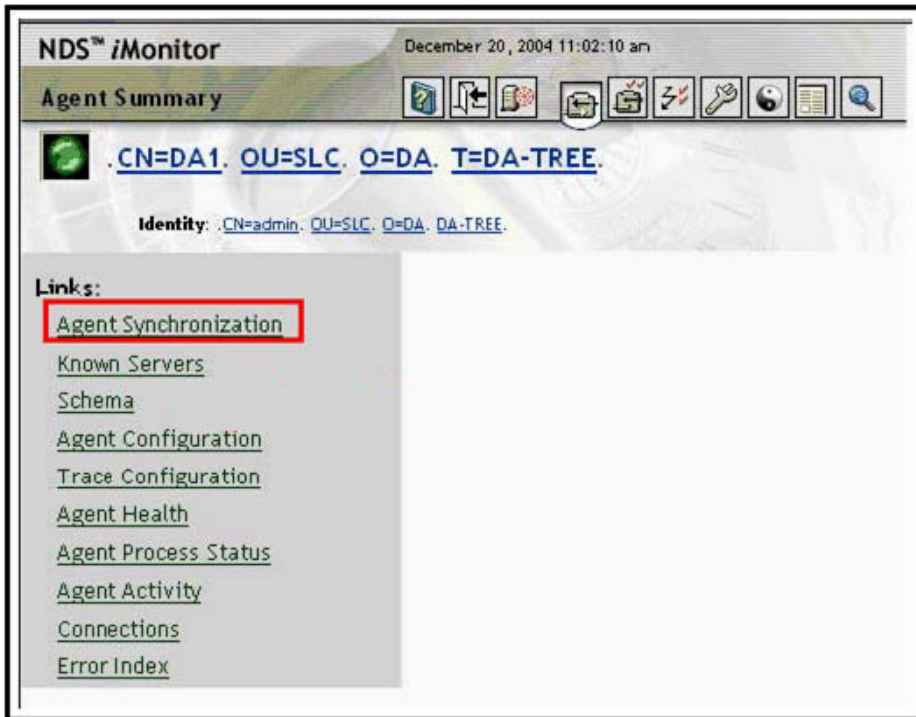
**QUESTION 20:**

**HOTSPOT**

Click the option that allows you to view partition synchronization information.



Answer:



---

### QUESTION 21:

You're implementing DirXML to synchronize data between two eDirectory trees: DA-TREE and EMA-TREE. How many DirXML eDirectory drivers do you need to install?

- A. Two. One in each eDirectory tree.
- B. Four. One for each tree's Publisher and Subscriber channels.
- C. One in the eDirectory tree that will be the authoritative data source.
- D. None. DirXML can communicate natively with eDirectory to synchronize trees.
- E. Three. One in each eDirectory tree and a third one in your authoritative data source.

Answer: A

---

### QUESTION 22:

You're installing the Branch Office Appliance software on older server hardware that doesn't support bootable CD drives. How can you install the software?

- A. You can't install the Appliance software without a bootable CD.
- B. Create a bootable diskette and install the appropriate DOS CD drivers on it.
- C. Insert the Branch Office Appliance CD in a Windows PC and run the MAKEBOOT.BAT file from the root of the CD.

- D. Create a bootable diskette and install the IPCONN drivers from the Novell Client CD on it, then install across the wire from another server.
- E. Mount the installation CD as a volume on another NetWare server, then configure a bootable diskette with the IP Server Connection Utility from the Novell Client CD and install over the wire.

Answer: A

---

**QUESTION 23:**

You administer a single-server network for a small business. Currently, your server is running NetWare 5.1. You need to implement NetWare 6.5. You don't have the budget to purchase additional hardware. Which option is the best method for implementing NetWare 6.5?

- A. In-place upgrade
- B. In-place migration
- C. Across-the-wire migration
- D. Compatibility-mode upgrade

Answer: A

---

**QUESTION 24:**

You want to implement an iSCSI SAN on your NetWare 6.5 server. What type of disk partition should you create to support an iSCSI shared storage system?

- A. NSS
- B. EXT3
- C. NTFS
- D. HPFS
- E. VFAT
- F. EXT2
- G. iSCSI
- H. FAT16
- I. FAT32
- J. Reiser
- K. Traditional

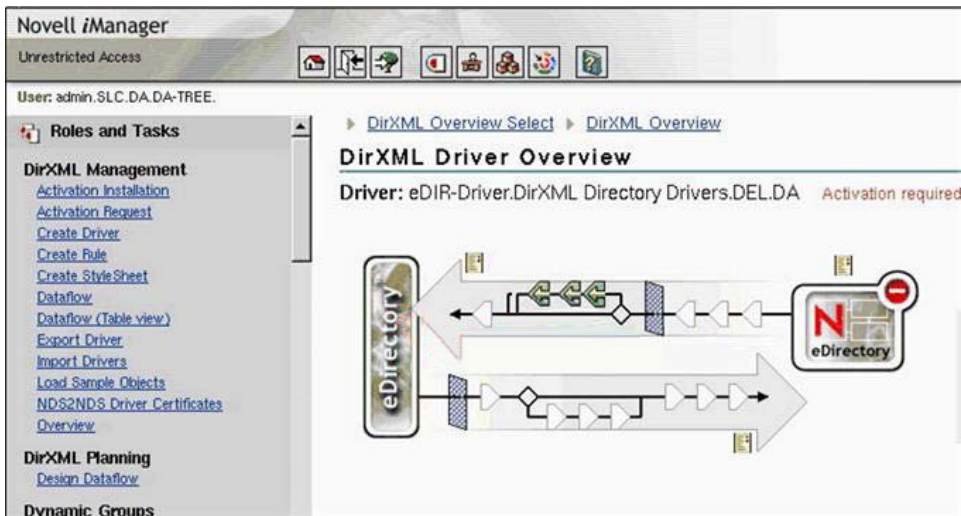
Answer: G

---

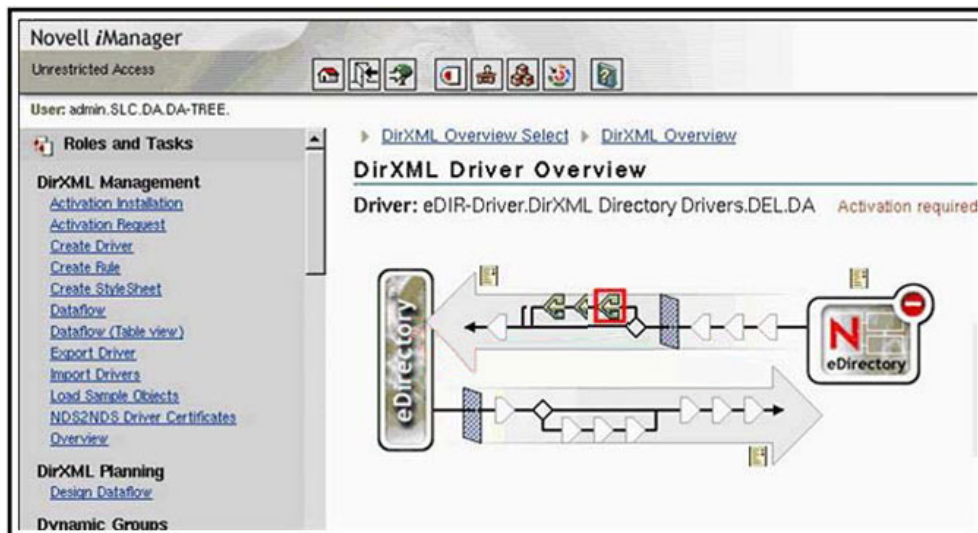
**QUESTION 25:**

HOTSPOT

Click the Matching Rule on the Publisher Channel.



Answer:



## QUESTION 26:

If you are at the NetWare internal debugger screen, which command will force a core dump?

- A. .c
- B. .d
- C. .g
- D. .q
- E. .x
- F. .f

Answer: A

**QUESTION 27:**

You want to create a pool snapshot of the APPS\_POOL on your server. You want to use APPS\_POOL\_S as the stored on pool. You want to name the snapshot APPS\_POOL\_S1. What command could you use from the server console to do this?

- A. mm snap APPS\_POOL APPS\_POOL\_S APPS\_POOL\_S1 create
- B. mm snap create APPS\_POOL APPS\_POOL\_S APPS\_POOL\_S1
- C. mm snap APPS\_POOL\_S1 APPS\_POOL APPS\_POOL\_S create
- D. mm snap create APPS\_POOL\_S APPS\_POOL APPS\_POOL\_S1
- E. mm snap create APPS\_POOL APPS\_POOL\_S1 APPS\_POOL\_S

Answer: B

---

**QUESTION 28:**

Which statements are true regarding running a directory service repair when using iMonitor? (Choose 2.)

- A. Running repair from iMonitor locks the eDirectory database.
- B. You can only repair a single object when running repair within iMonitor.
- C. You can only run a repair on the server from where iMonitor is running.
- D. If DSREPAIR is loaded at the server console, the Repair option in iMonitor cannot run.
- E. You can only repair objects in the same container as the server from which you are running iMonitor.

Answer: C,D

---

**QUESTION 29:**

How does DirXML determine when to synchronize data between connected systems?

- A. It polls all systems at specified intervals; synchronizing all changes.
- B. It detects changes as they occur in one system and synchronizes them to the other systems.
- C. It schedules synchronization at specified intervals; synchronizing only that data which has changed since the last synchronization.
- D. It re-synchronizes all data on all systems at specified intervals regardless of whether the data has changed or not since the last synchronization.

Answer: B

---

**QUESTION 30:**

Which command would you issue from the console of a NetWare 6.5 server to view its internal network number?

- A. PING
- B. CONFIG
- C. TCPCON
- D. SPXCON
- E. NETNUM
- F. NSLOOKUP
- G. IPXCONFIG

Answer: B

---

**QUESTION 31:**

Exhibit:

The screenshot shows the 'Volume Properties' dialog box with the 'Properties: DATA' tab selected. The 'Attributes' sub-tab is active. The following options are visible:

- ☒ Backup
- ☐ Compression
- ☐ Data Shredding
  - Number of shredding cycles:
- ☐ Directory Quotas
- ☐ Flush Files Immediately
- ☐ Migration
- ☐ Modified File List (MFL)
- ☒ Salvage Files
- ☐ Snapshot - File Level
- ☐ User Space Quotas
- ☐ User-level Transaction Model

At the bottom, there is a 'Quota' field with a dropdown set to 'Bytes' and a checkbox labeled 'Allow volume quota to grow to the pool size' which is checked. 'OK', 'Cancel', and 'Apply' buttons are at the bottom.

Which statements are true regarding the NSS volume attribute configuration that is shown? (Choose 2.)

- A. User and directory space allotments are not configured.
- B. Deleted data will be scrambled 1 time to prevent unauthorized access.
- C. Third-party backup utilities will be automatically launched when necessary.
- D. Files will be automatically compressed during the next compression cycle.
- E. Deleted files will be automatically kept until the space is needed for other data.

Answer: A,E

---

**QUESTION 32:**



To accommodate increased storage needs, you need to increase the size of an NSS storage pool on a NetWare 6.5 server. Which tools can be used to accomplish this? (Choose 2.)

- A. VCU
- B. NSSMU
- C. VREPAIR
- D. ConsoleOne
- E. NDS Manager
- F. Remote Manager

Answer: B,F

---

**QUESTION 33:**

Exhibit:



Replication between your Appliances and the Central Office server is failing. The system is connected with fractional T1 links. The names of the Appliances are APP-1, APP-2, and APP-3. You've configured automatic user provisioning. When you configured Rsync, you specified that the DATA volumes on appliances App-1, App-2, and App-3 be replicated. What is the problem?

- A. Appliance names are case-sensitive.
- B. You can't replicate volumes other than SYS.
- C. Rsync isn't compatible with fractional T1 links.
- D. NMAS must be disabled on the Appliances prior to replication.
- E. NICI must be disabled on the Appliances prior to replication.
- F. Automatic user provisioning must be disabled prior to replicating data.

Answer: A

---

**QUESTION 34:**

What must be configured to allow partitions to be mirrored?

- A. RAID level 0

- B. Disk striping
- C. A hot fix area
- D. Partition labels
- E. Hot-swappable drives

Answer: C

---

**QUESTION 35:**

What is the function of the DirXML Subscriber Channel?

- A. Detects change events in eDirectory.
- B. Notifies eDirectory of application-generated events.
- C. Propagates events from the application to eDirectory.
- D. Propagates events from eDirectory to the application.
- E. Applies XML-based rules to each event presented to it.
- F. Defines the object classes and associated attributes you want to synchronize.
- G. Issues and receives XML documents, and converts XDS events to application events.

Answer: D

---

**QUESTION 36:**

When is Autoexec.ncf executed during server start-up?

- A. Immediately after Startup.ncf
- B. Between LOADSTAGE 1 and LOADSTAGE 2
- C. Between LOADSTAGE 2 and LOADSTAGE 3
- D. Between LOADSTAGE 3 and LOADSTAGE 4
- E. Between LOADSTAGE 4 and LOADSTAGE 5

Answer: E

---

**QUESTION 37:**

You are configuring DirXML to synchronize four eDirectory trees: DA-TREE, EMA-TREE, WIDGET-TREE, and ACME-TREE. Data should flow only from DA-TREE to the other three trees. You want all objects from DA-TREE, regardless of context, to be synchronized to a single container in each destination tree. How should you configure the eDirectory drivers in EMA-TREE, WIDGET-TREE, and ACME-TREE?

- A. Flat
- B. Dept
- C. Single
- D. Mirrored

- E. Subordinate
- F. Authoritative
- G. Consolidated
- H. Bi-directional

Answer: A

---

**QUESTION 38:**

You're planning a Branch Office Deployment. Your system will contain one Central Office Server at your organization's corporate headquarters and three remote Branch Office Appliances connected by a T1 link. You want to manage all user accounts at the home office in your eDirectory tree running on a NetWare 6.5 server. To do this, what service must be working properly on the Central Office Server?

- A. AFP
- B. LDAP
- C. CUPS
- D. Rsync
- E. MySQL
- F. Samba
- G. OpenSSH
- H. SybaseAnywhere Server
- I. Novell exteNd Application Server

Answer: B

---

**QUESTION 39:**

Which NSS volume attribute should you configure to back out incomplete transactions that result from a network failure?

- A. Salvage files
- B. Compression
- C. Modified file list
- D. User space restrictions
- E. User-level transaction model

Answer: E

---

**QUESTION 40:**

Which command checks the file system integrity on an NSS pool named POOLONE?

- A. VERIFY POOLONE
- B. NSSVERIFY /POOLONE
- C. VERIFY NSS=POOLONE
- D. NSS /POOLVERIFY=POOLONE

Answer: D

---

**QUESTION 41:**

When a server abends, a message file gets created. By default, where is this file placed when the server is restarted?

- A. C:\
- B. SYS:
- C. SYS:\ETC
- D. SYS:\ABEND
- E. SYS:\PUBLIC
- F. SYS:\SYSTEM
- G. C:\NWSERVER
- H. SYS:\SYSTEM\ABEND

Answer: F

---

**QUESTION 42:**

Which data structure is maintained by the kernel and contains threads that are ready to be executed by the CPU?

- A. Run Queue
- B. Run Cache
- C. CPU Cache
- D. CPU Queue
- E. Thread Cache
- F. Thread Queue
- G. Execution Cache
- H. Execution Queue

Answer: A

---

**QUESTION 43:**

To improve your NetWare 6.5 server's disk performance, you decide to split part of heavily used APPS, a traditional volume, to APPS2, an NSS volume on the same server. Given that your server has Support Pack 1 applied, can you do this?

- A. No, you can't split a traditional volume.

- B. No, you can only split volumes to a remote server.
- C. No, you must first apply Support Pack 1.1 or later.
- D. No, you can only split a traditional volume on a NetWare 5.1 server.
- E. Yes, the prerequisite requirements for a volume split have been met.
- F. No, you can only split a traditional volume to another traditional volume.

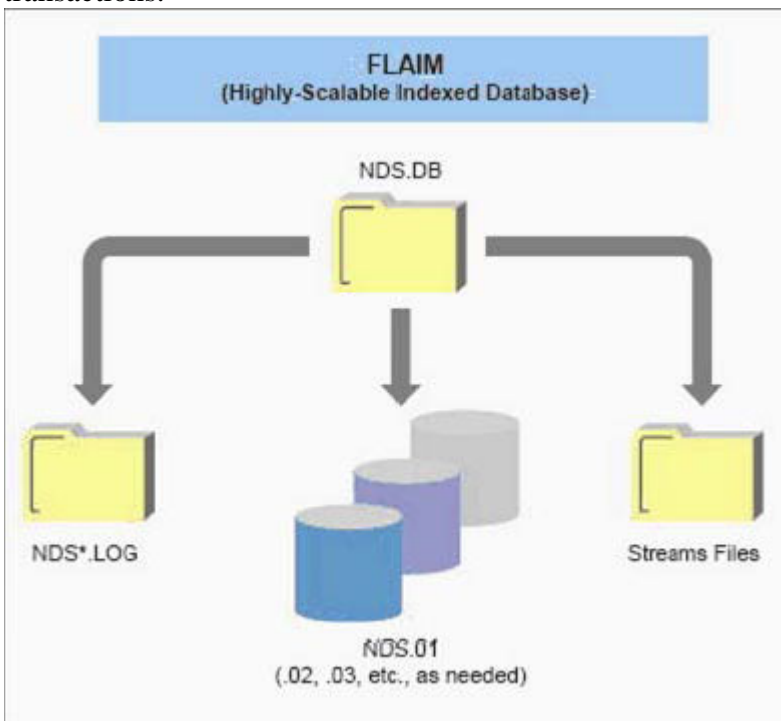
Answer: A

---

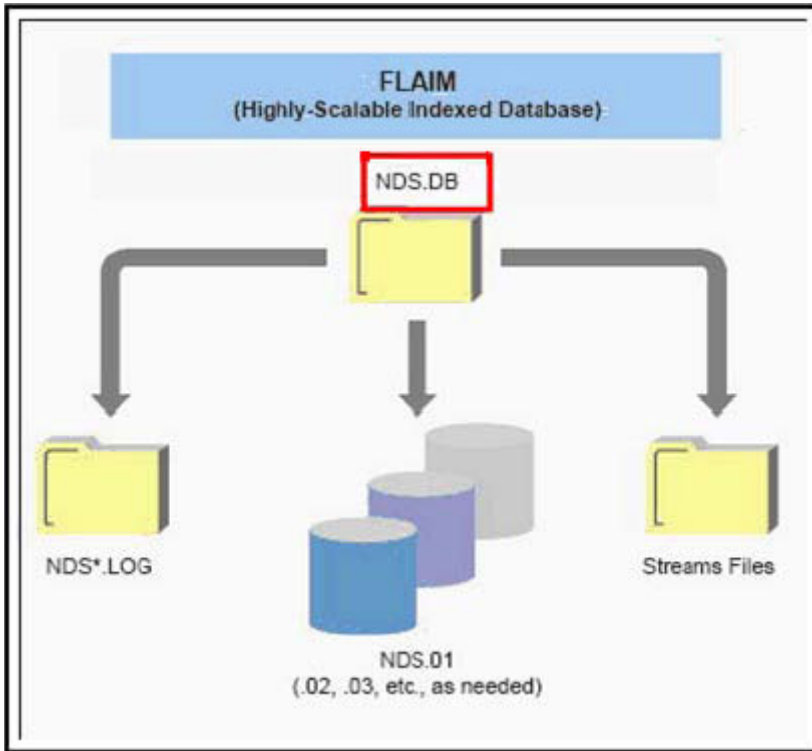
#### QUESTION 44:

##### HOTSPOT

Click on the file that contains the roll-back log used to abort incomplete transactions.



Answer:



---

**QUESTION 45:**

Which command should you issue on a NetWare 4.11 server prior to consolidating it to a NetWare 6.5 server to prevent compressed files from decompressing when accessed?

- A. NSS /FILECOMPRESSION = 0
- B. SET FILE COMPRESSION = OFF
- C. NSS /VOLUMECOMPRESSION = OFF
- D. SET COMPRESSION DAILY CHECK STOP HOUR = 0
- E. SET MINIMUM COMPRESSION PERCENTAGE GAIN = 0
- F. SET ALLOW UNOWNED FILES TO BE EXTENDED = OFF
- G. SET CONVERT COMPRESSED TO UNCOMPRESSED OPTION = 0

Answer: G

---

**QUESTION 46:**

What's the maximum number of CPUs supported by NetWare 6.5?

- A. 2
- B. 4
- C. 8
- D. 16



- E. 32
- F. 64
- G. 128

Answer: E

---

**QUESTION 47:**

Which changes are made to the destination server's Autoexec.ncf file by the Migration Wizard during the migration process? (Choose 2.)

- A. The time server type is changed to Single Reference.
- B. The server name is changed to match the name of the source server.
- C. The CIFS user context is changed to match the CIFS user context of the source server.
- D. The time zone value is changed to match that of the closest Single Reference time provider.
- E. The server ID is modified to match the IPX internal net number or server ID of the source server.
- F. The bindery context value is changed to match the context of the source server in the source eDirectory tree.

Answer: B,E

---

**QUESTION 48:**

A key piece of the DirXML architecture is the DirXML Engine. Which components comprise the DirXML Engine? (Choose 2.)

- A. Join Engine
- B. DirXML Driver
- C. Publisher Filter
- D. Subscriber Filter
- E. eDirectory Interface

Answer: A,E

---

**QUESTION 49:**

In which area of the Novell corporate web site will you find articles posted by readers who have discovered a new way of implementing a Novell product or a resolution to a problem?

- A. Support
- B. Products
- C. Training
- D. Solutions

E. Cool Solutions

Answer: E

---

**QUESTION 50:**

Which utility is used to verify that each server has the cryptographic keys necessary to securely communicate with the other servers in the tree?

- A. SSL.NLM
- B. CONFIG.NLM
- C. SDIDIAG.NLM
- D. SECURE.NLM
- E. MONITOR.NLM
- F. PKICHECK.NLM
- G. SDINOTES.NLM
- H. SSLCHECK.NLM
- I. SECUREDIAI.NLM

Answer: C

---

**QUESTION 51:**

Which commands force a schema synchronization to occur?

- A. SET DSTRACE =+schema  
SET DSTRACE =\*f
- B. SET DSTRACE =+schema  
SET DSTRACE =\*h
- C. SET DSTRACE =+schema  
SET DSTRACE =\*l
- D. SET DSTRACE =+schema  
SET DSTRACE =\*p
- E. SET DSTRACE =+schema  
SET DSTRACE =\*ss

Answer: E

---

**QUESTION 52:**

To balance the load in your network, you want to split heavily used volume USERS, an NSS volume, on FS1. You decide to split the volume at the USERS:\EXTERNAL\CONTRACTORS subdirectory. The destination volume is an NSS volume on FS2. Given that both servers are NetWare 6.5 servers in the same DFS Management context and have Support Pack 1 installed, can this be done?

- A. No, you must apply Support Pack 1.1 or later.
- B. No, you can't split a volume at the subdirectory level.
- C. No, you can't split an NSS volume to another NSS volume.
- D. No, the servers must reside in different DFS Management Contexts.
- E. Yes, the prerequisite requirements for this move request have been met.
- F. No, split operations for NSS volumes can only occur between servers in different contexts.

Answer: E

---

**QUESTION 53:**

You need to grant the IS.SLC.DA container Read and File Scan rights to the Data:\Apps directory on your NetWare 6.5 server. Which utility should you use to do this? (Choose 2.)

- A. iMonitor
- B. iManager
- C. ConsoleOne
- D. Rights Manager
- E. Remote Manager

Answer: C,E

---

**QUESTION 54:**

You need to migrate your existing NetWare server, which is running NetWare 5.0, to NetWare 6.0. You've installed Migration Wizard 8 on your Windows 2000 Professional workstation, which also has the Novell Client 4.83 installed. You've installed the latest Support Packs on both your source and destination servers. Does this scenario meet Migration Wizard 8 system requirements?

- A. Yes, all system requirements have been met.
- B. No, you need to bind IPX on the destination server.
- C. No, Migration Wizard 8 doesn't support Novell Client 4.83.
- D. No, Migration Wizard 8 doesn't support NetWare 5.0 source servers.
- E. No, Migration Wizard 8 doesn't support Windows 2000 Professional.
- F. No, Migration Wizard 8 doesn't support NetWare 6.0 destination servers.
- G. No, you shouldn't have installed a Support Pack on the destination server.

Answer: A

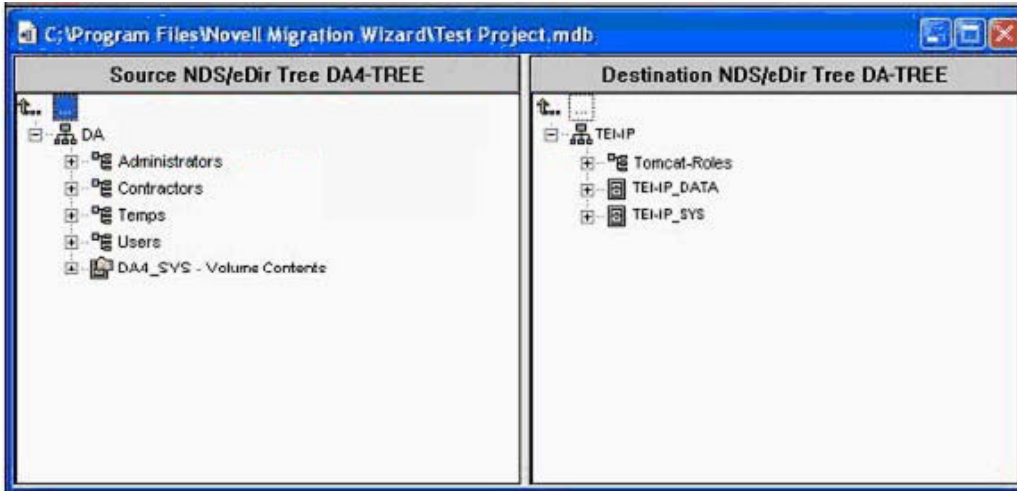
---

**QUESTION 55:**

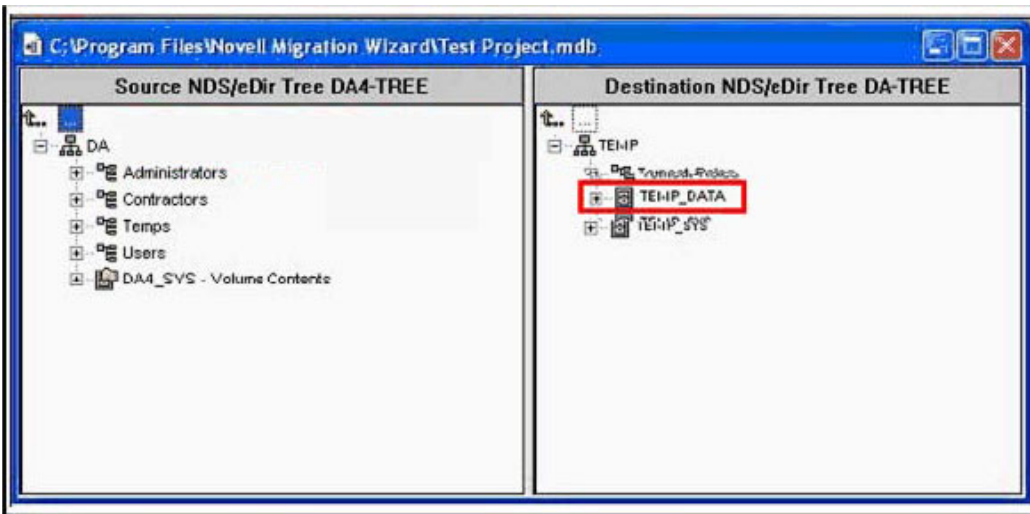
**HOTSPOT**

Click on the location where you would drop the contents of the SYS volume on the

source server if you wanted them to be migrated to DA4\_DATA on the destination server.



Answer:



---

### QUESTION 56:

When troubleshooting eDirectory errors, there are additional log files that can provide information. Which log file allows you to view alert messages and system operation information sent to the System Console and Logger screens?

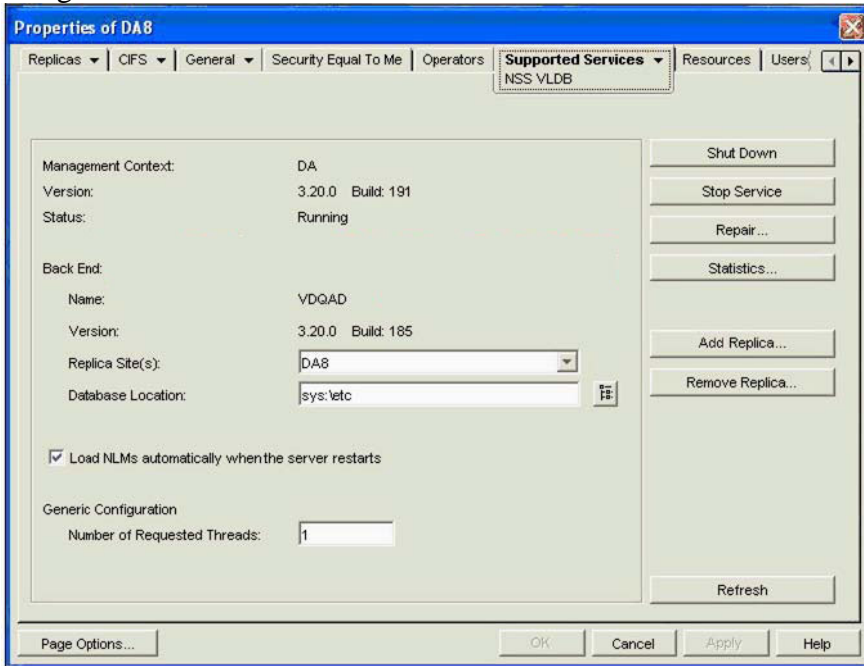
- A. ABEND.LOG
- B. TRACE.LOG
- C. HEALTH.LOG
- D. SYS\$LOG.ERR
- E. NRMUSERS.LOG

Answer: D

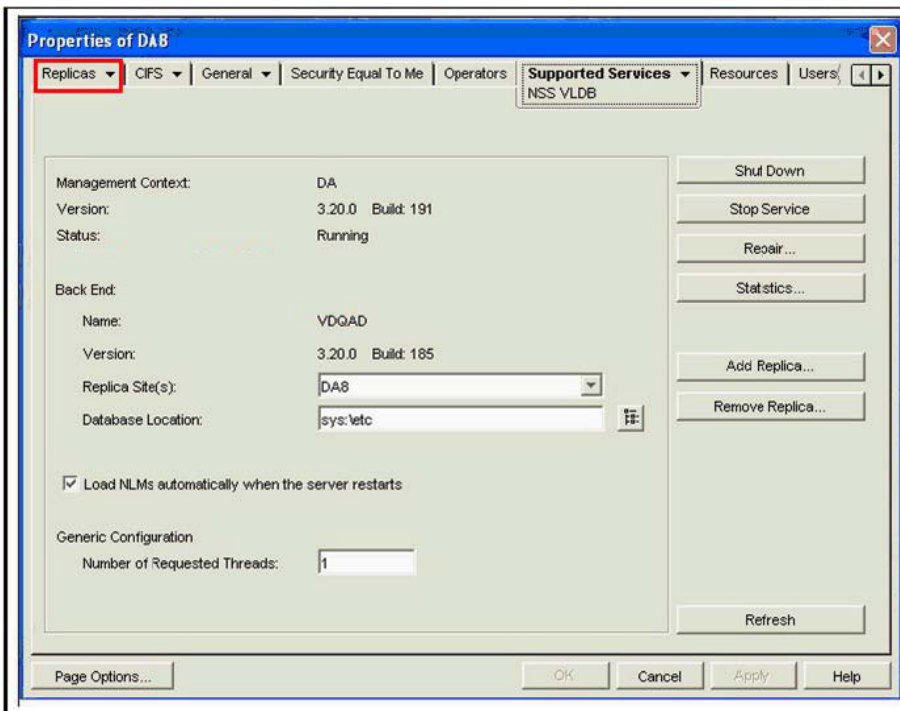
---

**QUESTION 57:****HOTSPOT**

Click the option you would select if you wanted to increase fault tolerance by configuring DA5 to host the DFS VLDB service for the DA Management Context along with DA8.



Answer:



**QUESTION 58:****HOTSPOT**

Click the option that allows you to view schema synchronization, obituary processing, external references, and limber.

**NDS™ iMonitor** December 20, 2004 11:02:10 am

**Agent Summary** Novell.

**.CN=DA1. OU=SLC. O=DA. T=DA-TREE.**

Identity: .CN=admin. OU=SLC. O=DA. DA-TREE.

**Links:**

- [Agent Synchronization](#)
- [Known Servers](#)
- [Schema](#)
- [Agent Configuration](#)
- [Trace Configuration](#)
- [Agent Health](#)
- [Agent Process Status](#)
- [Agent Activity](#)
- [Connections](#)
- [Error Index](#)

**Partition Synchronization Status**

Partition	Errors	Last Successful Sync.	Maximum Ring Delta	Replica's Perishable Data Delta	Replica
.DA-TREE.	0	0:34:01	0:00:00	306545:55:50	<a href="#">Synchronization, Agent Health, Change Cache, Continuity</a>

**Servers Known to Database Totals**

Type	Count	Up	Down	Unknown
Known Servers	1	1	0	0
In Replica Ring	1	1	0	0

Answer:

**NDS™ iMonitor** December 20, 2004 11:02:10 am

**Agent Summary** Novell.

**.CN=DA1. OU=SLC. O=DA. T=DA-TREE.**

Identity: .CN=admin. OU=SLC. O=DA. DA-TREE.

**Links:**

- [Agent Synchronization](#)
- [Known Servers](#)
- [Schema](#)
- [Agent Configuration](#)
- [Trace Configuration](#)
- [Agent Health](#)
- [Agent Process Status](#)
- [Agent Activity](#)
- [Connections](#)
- [Error Index](#)

**Partition Synchronization Status**

Partition	Errors	Last Successful Sync.	Maximum Ring Delta	Replica's Perishable Data Delta	Replica
.DA-TREE.	0	0:34:01	0:00:00	306545:55:50	<a href="#">Synchronization, Agent Health, Change Cache, Continuity</a>

**Servers Known to Database Totals**

Type	Count	Up	Down	Unknown
Known Servers	1	1	0	0
In Replica Ring	1	1	0	0

**QUESTION 59:**

You want to load MYSQLD.NLM in secure mode using the configuration parameters contained in the SYS:\ARKMANAGER\ARKSQL.CNF file. To do this, which command would you enter at the server console?



- A. mysqld\_safe defaults-file=SYS:\ARKMANAGER\ARKSQL.CNF
- B. mysqld\_safe --defaults-file=SYS:\ARKMANAGER\ARKSQL.CNF
- C. mysql\_install\_db defaults-file=SYS:\ARKMANAGER\ARKSQL.CNF
- D. mysql\_install\_db --defaults-file=SYS:\ARKMANAGER\ARKSQL.CNF
- E. mysqld\_install\_db --defaults-file=SYS:\ARKMANAGER\ARKSQL.CNF

Answer: B

---

**QUESTION 60:**

You've just installed a NetWare 6.5 server. Without making any configuration changes, which password does the CIFS service on your server use to authenticate clients?

- A. NIS Password
- B. LDAP Password
- C. Simple Password
- D. Universal Password
- E. eDirectory Password

Answer: C

---

**QUESTION 61:**

You are troubleshooting routing problems in your organization's network. To test a hypothesis, you need to view a particular workstation's routing table. Given that the workstation is running Windows XP Professional, which command will display the routing table?

- A. ROUTE -T
- B. ROUTE -P
- C. ROUTE -A
- D. ROUTE PRINT
- E. ROUTE TABLE
- F. ROUTE SHOW TABLE

Answer: D

---

**QUESTION 62:**

Which Novell-patented technology allows visiting users from the home office to log in to the local Branch Office Appliance?

- A. UserSync
- B. RemoteSiteSync

- C. User access provisioning
- D. Branch office synchronization

Answer: C

---

**QUESTION 63:**

Your users need to access previous versions of a file. Which utility can they use to access previous file versions stored by Archive and Versioning Services?

- A. Filer
- B. iFolder
- C. iManager
- D. NetStorage
- E. ConsoleOne
- F. Remote Manager

Answer: D

---

**QUESTION 64:**

You're configuring a Branch Office system. Your Central Office Server is named FS2 in EMA-TREE. Which eDirectory object do you need to extract an SSL certificate from?

- A. W0
- B. CertMutual
- C. EMA-TREE CA
- D. SSL Certificate-DNS\_FS2
- E. SSL Certificate-LDAP\_FS2
- F. SSL Certificate-RSYNC\_FS2

Answer: E

---

**QUESTION 65:**

**HOTSPOT**

The graphic shows the NSS volume attributes. Click the feature that you should activate to automatically scramble data that is deleted from the volume.

**Volume Properties**

Properties: DATA

Attributes Statistics Quotas Usage

☒ Backup  
☐ Compression  
☐ Data Shredding  
 Number of shredding cycles   
☐ Directory Quotas  
☐ Flush Files Immediately

☐ Migration  
☐ Modified File List(MFL)  
☒ Salvage Files  
☐ Snapshot - File Level  
☐ User Space Quotas  
☐ User-level Transaction Model

Quota:  Bytes

☒ Allow volume quota to grow to the pool size

OK Cancel Apply

Answer:

**Volume Properties**

Properties: DATA

Attributes Statistics Quotas Usage

☒ Backup  
☐ Compression  
☒ Data Shredding  
 Number of shredding cycles   
☐ Directory Quotas  
☐ Flush Files Immediately

☐ Migration  
☐ Modified File List(MFL)  
☒ Salvage Files  
☐ Snapshot - File Level  
☐ User Space Quotas  
☐ User-level Transaction Model

Quota:  Bytes

☒ Allow volume quota to grow to the pool size

OK Cancel Apply

### QUESTION 66:

While installing the Branch Office Appliance software, you are prompted to save the configuration to a diskette that can be used later during the installation of other Appliances. If you choose to do so, what filename is the configuration saved under?

A. AUTOEXEC.NCF

- B. AUTOLOAD.CNF
- C. AUTOLOAD.NBO
- D. NBOCONFIG.NCF
- E. NBOCONFIG.TXT
- F. AUTOCONFIG.NCF

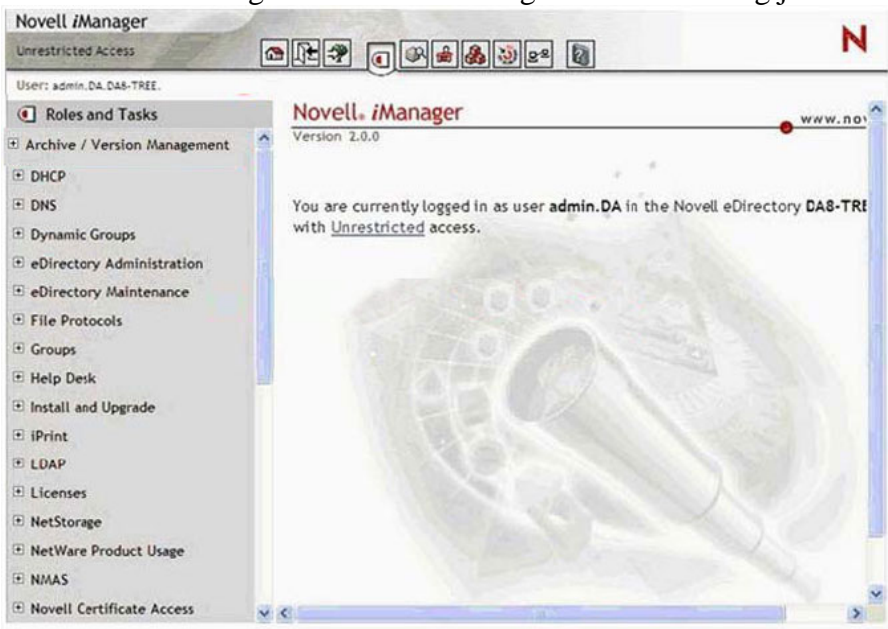
Answer: C

---

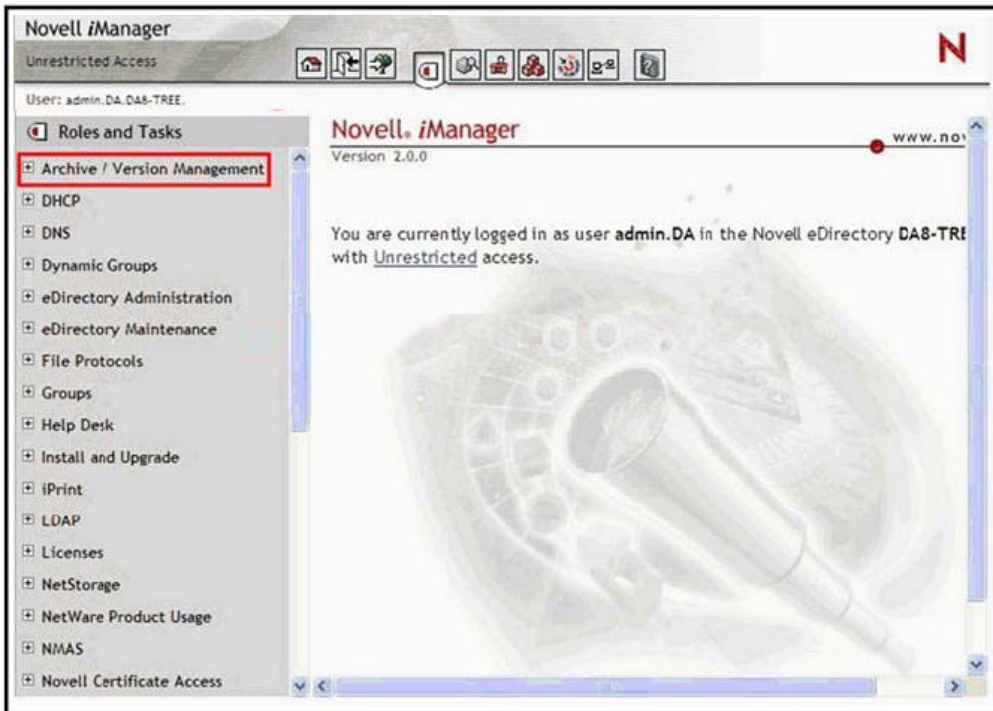
## QUESTION 67:

### HOTSPOT

Click on the iManager role used to configure file versioning jobs.



Answer:



---

**QUESTION 68:**

After issuing the MODULES command at the server console of your NetWare 6.5 server, you notice that a particular NLM is displayed in purple. What does this indicate about the module?

- A. The NLM was auto-loaded by another module.
- B. The NLM was loaded from Startup.ncf or from Autoexec.ncf.
- C. The NLM was bound into Server.exe and was loaded from there.
- D. The NLM was bound into Server.exe, but was also found in C:\Nwserver and was loaded from there instead.

Answer: A

---

**QUESTION 69:**

Which command attempts to repair the file system on an NSS pool named POOLONE?

- A. REBUILD POOLONE
- B. VREPAIR POOLONE
- C. REBUILD /NSS=POOLONE
- D. VREPAIR /NSS=POOLONE
- E. NSS /POOLREBUILD=POOLONE

Answer: E

---

**QUESTION 70:**

What must you do before deactivating a stored-on pool?

- A. Run a VERIFY on the stored-on pool.
- B. Run a REBUILD on the stored-on pools.
- C. Rebuild the original pools that have snapshots on the stored-on pool.
- D. Activate the original pools that have snapshots on the stored-on pool.
- E. Deactivate the original pools that have snapshots on the stored-on pool.
- F. Activate other stored-on pools that have snapshots on the stored-on pool to be deactivated.

Answer: E

---

**QUESTION 71:**

What can a DFS junction point to? (Choose 2.)

- A. A subdirectory on a volume on the local server.
- B. The root directory of a volume on the local server.
- C. A subdirectory on a volume on a remote server in the same eDirectory tree.
- D. A subdirectory on a volume on a remote server in a different eDirectory tree.
- E. The root directory of a volume on a remote server in the same eDirectory tree.
- F. The root directory of a volume on a remote server in a different eDirectory tree.

Answer: B,E

---

**QUESTION 72:**

The NDS.01 file grows to a certain size and then an NDS.02 file is created for the remaining data. What is the size NDS.01 gets when the NDS.02 file gets created for the remaining data?

- A. 100 MB
- B. 500 MB
- C. 1 GB
- D. 2 GB
- E. 4 GB

Answer: D

---

**QUESTION 73:**



Your organization has been experiencing record growth. You need to split and move several heavily-used NSS volumes to balance out server loads. Given that your servers are running NetWare 6.5, how many split or move requests can be concurrently processed on each server?

- A. 1
- B. 2
- C. 4
- D. 8
- E. 16
- F. 32
- G. Unlimited

Answer: C

---

**QUESTION 74:**

Your NetWare 6.5 server has a DNS name of da2.da.com. Which URL would you use in a browser window to access the Remote Manager service on this server? (Choose 2.)

- A. http://da2.da.com:8008
- B. http://da2.da.com:8009
- C. https://da2.da.com:8009
- D. https://da2.da.com:8008
- E. http://da2.da.com:8008/nrm.html
- F. https://da2.da.com:8009/nrm.html
- G. http://da2.da.com:8009/remotemanager.html
- H. https://da2.da.com:8008/remotemanager.html

Answer: A,C

---

**QUESTION 75:**

When a server abends, a message file gets created. By default, where is this file placed when the server is restarted?

- A. C:\
- B. SYS:
- C. SYS:\ETC
- D. SYS:\ABEND
- E. SYS:\PUBLIC
- F. SYS:\SYSTEM
- G. C:\NWSERVER
- H. SYS:\SYSTEM\ABEND

Answer: F

---

**QUESTION 76:**

Which Branch Office component replicates data from the Branch Office Appliance to the Central Office Server?

- A. LDAP
- B. UDDI
- C. CUPS
- D. Rsync
- E. MySQL
- F. NCPSync
- G. CIFS-Sync
- H. SybaseAnywhere Server

Answer: D

---

**QUESTION 77:**

Which log file is used for documentation of eDirectory solutions or to document changes made to the server?

- A. NDSD.LOG
- B. TRACE.LOG
- C. ABEND.LOG
- D. SYSTEM.LOG
- E. HEALTH.LOG
- F. SYS\$LOG.ERR
- G. NRMUSERS.LOG

Answer: G

---

**QUESTION 78:**

You're troubleshooting an intermittent connectivity problem between the Windows XP client workstations and the NetWare 6.5 server in your network. You need to test communications across your organization's routers using a packet size larger than the default size of 32 bytes used by the Windows PING utility. What switch will configure PING to send packets that are 1024 bytes (1 KB) in size?

- A. -c 1
- B. -n 1
- C. -l 1024
- D. -a 1024

- E. -s 1024
- F. -ps 1024

Answer: C

---

**QUESTION 79:**

Which utility is used to verify that each server has the cryptographic keys necessary to securely communicate with the other servers in the tree?

- A. SSL.NLM
- B. CONFIG.NLM
- C. SDIDIAG.NLM
- D. SECURE.NLM
- E. MONITOR.NLM
- F. PKICHECK.NLM
- G. SDINOTES.NLM
- H. SSLCHECK.NLM
- I. SECUREDIAAG.NLM

Answer: C

---

**QUESTION 80:**

Which SET parameter will cause the server to attempt to recover from software abends, NMIs, and machine check exceptions?

- A. SET AUTO RESTART AFTER ABEND = 0
- B. SET AUTO RESTART AFTER ABEND = 1
- C. SET AUTO RESTART AFTER ABEND = 2
- D. SET AUTO RESTART AFTER ABEND = 3

Answer: B

---

**QUESTION 81:**

Which connections are used between a Storage Area Network (SAN) and the Local Area Network (LAN)? (Choose 3.)

- A. EGP
- B. SCSI
- C. HTTP
- D. ICMP
- E. IRDP
- F. HTTPS
- G. TCP/IP

- H. UDP/IP
- I. IEEE 802.3
- J. Fiber Channel

Answer: B,G,J

---

**QUESTION 82:**

By default, where is a core dump saved to?

- A. C:\
- B. SYS:
- C. SYS:ETC
- D. SYS:SYSTEM
- E. C:\NWSERVER

Answer: A

---

**QUESTION 83:**

Which tool is used to fix problems with an NSS pool that could not be corrected with other techniques?

- A. VCU
- B. VERIFY
- C. REPAIR
- D. REBUILD
- E. NSSSCAN
- F. NSSREPAIR
- G. POOLREPAIR

Answer: D

---

**QUESTION 84:**

You are implementing an iSCSI SAN on your server. You need to load the iSCSI target service. Which command will do this?

- A. TON
- B. ION
- C. ITAR
- D. SCSITAR
- E. NSS /ISCSITARGET=ON
- F. SET ISCSI TARGET = ON

Answer: A

---

**QUESTION 85:**

You're troubleshooting a routing problem in your organization's network. To test a hypothesis, you need to run the TRACERT command from one of your Windows XP workstations to trace the route to corp.da.com with the maximum number of router hops constrained to 4. Which command should you use to do this?

- A. TRACERT -4 corp.da.com
- B. TRACERT corp.da.com -4
- C. TRACERT -H 4 corp.da.com
- D. TRACERT -R 4 corp.da.com
- E. TRACERT -A 4 corp.da.com
- F. TRACERT corp.da.com -D 4

Answer: C

---

**QUESTION 86:**

Which are probable causes of a server console locking up? (Choose 2.)

- A. A corrupt NLM
- B. High utilization
- C. Duplicate IP addresses
- D. Cache buffers falling below 20%
- E. Packet receive buffers reaching the maximum

Answer: A,B

---

**QUESTION 87:**

You want to migrate an existing NetWare 6.0 server to NetWare 6.5. You've purchased a new server that uses significantly faster hardware. You want your migrated NetWare 6.5 server to run on this new system. Which strategies will work? (Choose 2.)

- A. Install NetWare 6.5 on the new server hardware and migrate the source NetWare 6.0 server to it.
- B. Install NetWare 6.5 on the new server hardware and migrate the source NetWare 6.0 server to it using the /NW6 switch.
- C. Down-grade the existing server to NetWare 5.1. Install NetWare 6.5 on the destination server and migrate the source server to it.
- D. Install NetWare 6.5 on the new server hardware and migrate the source NetWare 6.0 server to it using the /MIGRATE60 switch.
- E. Install NetWare 6.0 on the new server hardware and migrate the source NetWare 6.0 server to it. Then upgrade the destination server to NetWare 6.5

F. Perform an In-Place Upgrade to NetWare 6.5 on the source server. Install NetWare 6.5 on the destination server and migrate the source server to the destination server.

Answer: E,F

---

**QUESTION 88:**

What does the Branch Office Appliance use to authenticate users at remote sites using their existing central office eDirectory user name and password?

- A. Rsync password
- B. Simple password
- C. Universal password
- D. eDirectory password
- E. Remote Access password
- F. Local Windows user account password

Answer: C

---

**QUESTION 89:**

You have noticed two servers not communicating with each other. You have run DSTRACE and it is showing -625 errors. Your environment is a pure IP environment. Which are useful troubleshooting steps to help identify the problem? (Choose 2.)

- A. Verify that both servers have NSS volumes.
- B. Verify that time is synchronized on the network.
- C. Verify that each server has enough free disk space.
- D. Verify that DSREPAIR is not loaded and locking the database.
- E. Load IPXPING and verify that each server can ping each other.

Answer: B,D

---

**QUESTION 90:**

Usage on your network is growing and you need to expand the NSS storage space on the servers. In which ways can you expand the available space? (Choose 3.)

- A. Overbook an NSS storage pool
- B. Recreate the pool and add additional volumes and partitions
- C. Increase the number of logical volumes in an NSS storage pool
- D. Increase the size of a storage pool by adding more storage devices
- E. Decrease the size of the storage pool to create more available free space
- F. Increase the size of the logical volume up to twice the size of the storage pool

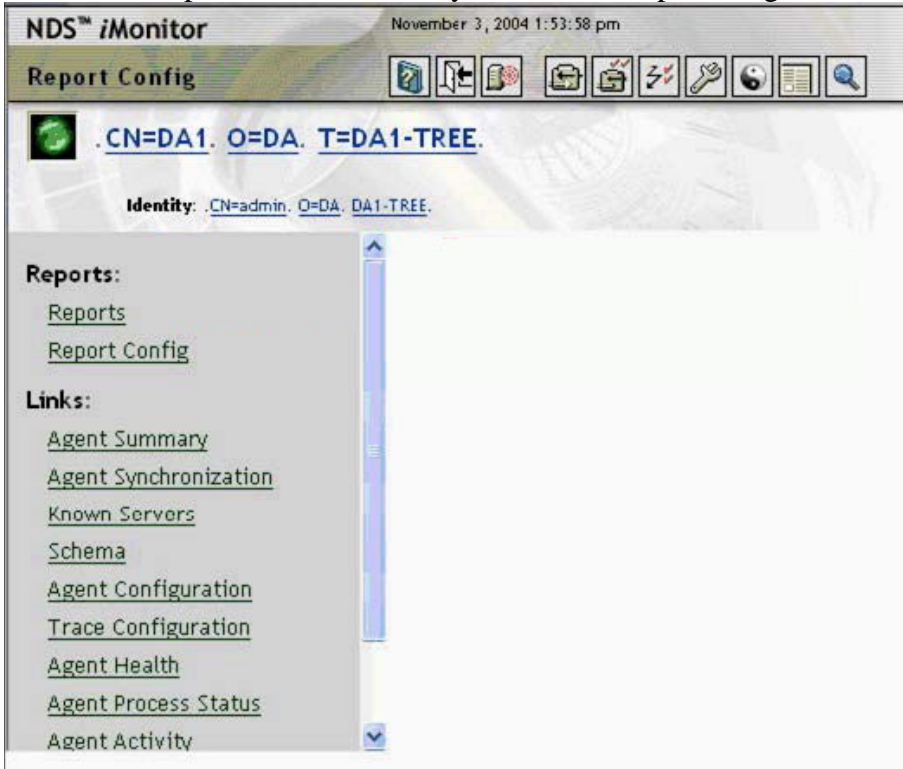
Answer: A,C,D

---

**QUESTION 91:**

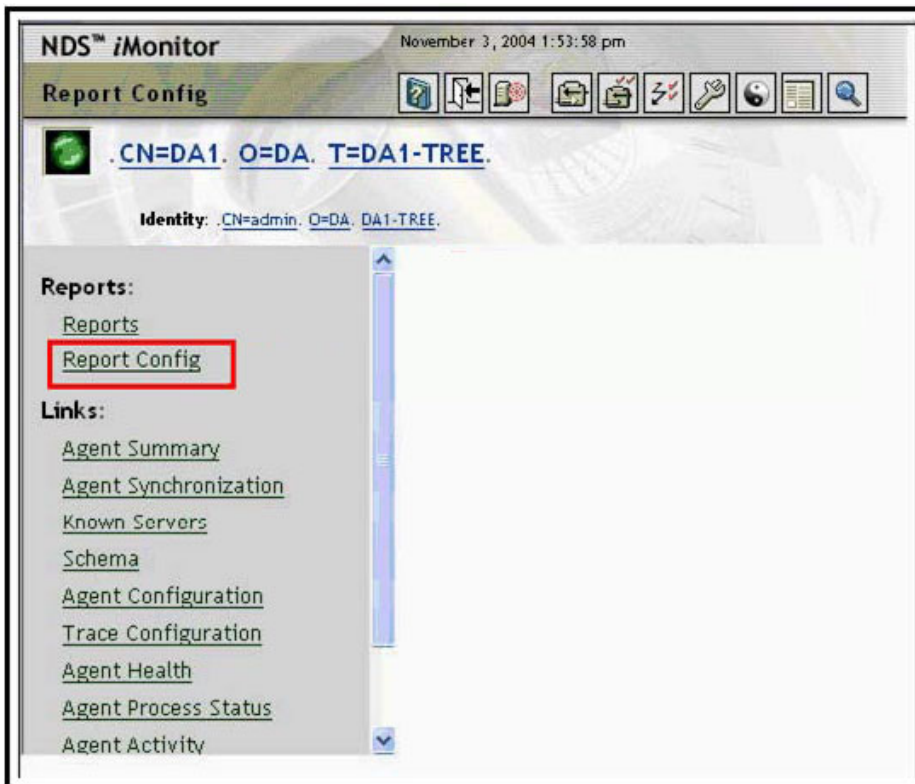
**HOTSPOT**

Click on the option that will allow you to view the preconfigured eDirectory reports.





Answer:



---

**QUESTION 92:**

Which command would you issue from the console of a NetWare 6.5 server to test its DNS resolver configuration?

- A. CONFIG
- B. TCPCON
- C. IPCONFIG
- D. IFCONFIG
- E. NSLOOKUP
- F. DNSCONFIG
- G. BINDCONFIG

Answer: E

---

**QUESTION 93:**

What is the function of the DirXML Subscriber Channel?

- A. Detects change events in eDirectory.
- B. Notifies eDirectory of application-generated events.
- C. Propagates events from the application to eDirectory.
- D. Propagates events from eDirectory to the application.

- E. Applies XML-based rules to each event presented to it.
- F. Defines the object classes and associated attributes you want to synchronize.
- G. Issues and receives XML documents, and converts XDS events to application events.

Answer: D

---

**QUESTION 94:**

You are migrating a NetWare 5.1 server to NetWare 6.5. You've reached the eDirectory migration portion of the Migration Wizard. The first step in this process edits the server name in several configuration files on the destination server. Which files are included in this process? (Choose 2.)

- A. Ctx.cfg
- B. Csl.cfg
- C. Slpda.cfg
- D. Snmp.cfg
- E. Cifsctx.cfg
- F. Attypes.cfg
- G. Startup.ncf
- H. Rootcert.der
- I. Timesync.cfg

Answer: D,I

---

**QUESTION 95:**

What is the maximum amount of RAM that the NetWare 6.5 operating system can address?

- A. 512 MB
- B. 1 GB
- C. 2 GB
- D. 4 GB
- E. 8 GB
- F. 16 GB
- G. 32 GB
- H. 64 GB

Answer: H

---

**QUESTION 96:**

Your organization has three regional eDirectory trees for each geographic location. One tree runs on NetWare 5.1 servers; the others run on NetWare 6.5 servers. You've just installed a high-end NetWare 6.5 server at your organization's

headquarters and want to consolidate all the servers in the disparate trees to the new server using the Server Consolidation Utility 3.0. Can this be done?

- A. Yes, the network meets the prerequisite requirements.
- B. No, the Server Consolidation Utility 3.0 can't consolidate servers residing in different trees.
- C. No, regionally dispersed eDirectory trees shouldn't be consolidated to a single tree and server.
- D. No, NetWare 6.5 servers can't be consolidated to another NetWare 6.5 server using the Server Consolidation Utility 3.0.
- E. No, NetWare 5.1 servers can't be consolidated to a NetWare 6.5 server using the Server Consolidation Utility 3.0.
- F. No, you can't consolidate servers of mixed versions to a NetWare 6.5 server using the Server Consolidation Utility 3.0.

Answer: A

---

**QUESTION 97:**

Which changes are made to the destination server's Autoexec.ncf file by the Migration Wizard during the migration process? (Choose 2.)

- A. The time server type is changed to Single Reference.
- B. The server name is changed to match the name of the source server.
- C. The CIFS user context is changed to match the CIFS user context of the source server.
- D. The time zone value is changed to match that of the closest Single Reference time provider.
- E. The server ID is modified to match the IPX internal net number or server ID of the source server.
- F. The bindery context value is changed to match the context of the source server in the source eDirectory tree.

Answer: B,E

---

**QUESTION 98:**

Which statements are true regarding running a directory service repair when using iMonitor? (Choose 2.)

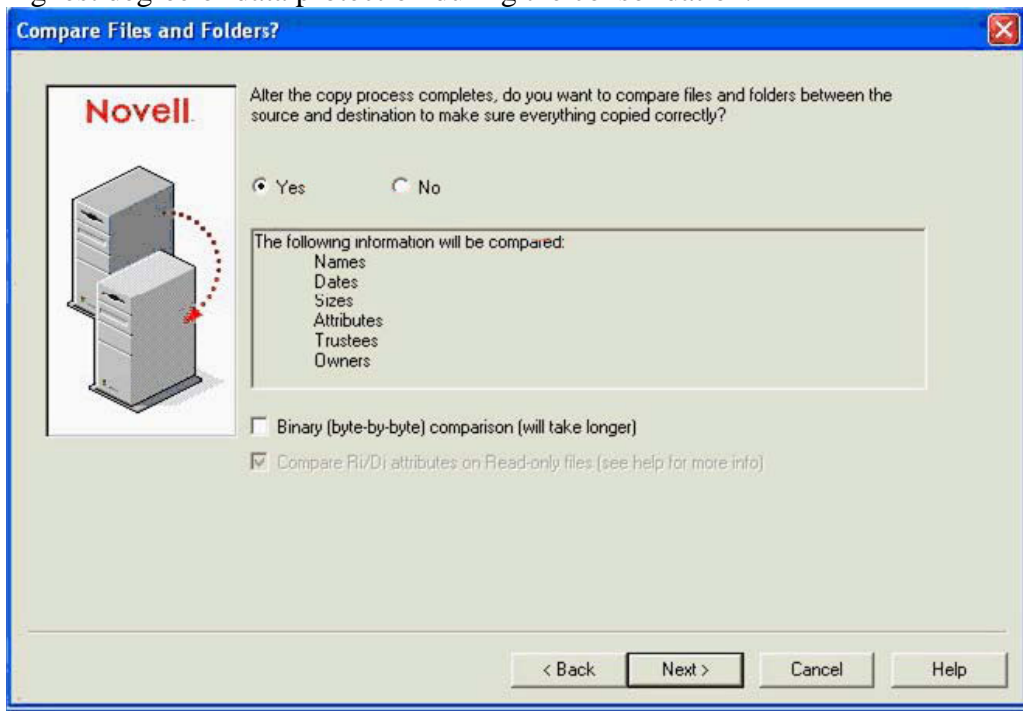
- A. Running repair from iMonitor locks the eDirectory database.
- B. You can only repair a single object when running repair within iMonitor.
- C. You can only run a repair on the server from where iMonitor is running.
- D. If DSREPAIR is loaded at the server console, the Repair option in iMonitor cannot run.
- E. You can only repair objects in the same container as the server from which you are running iMonitor.

Answer: C,D

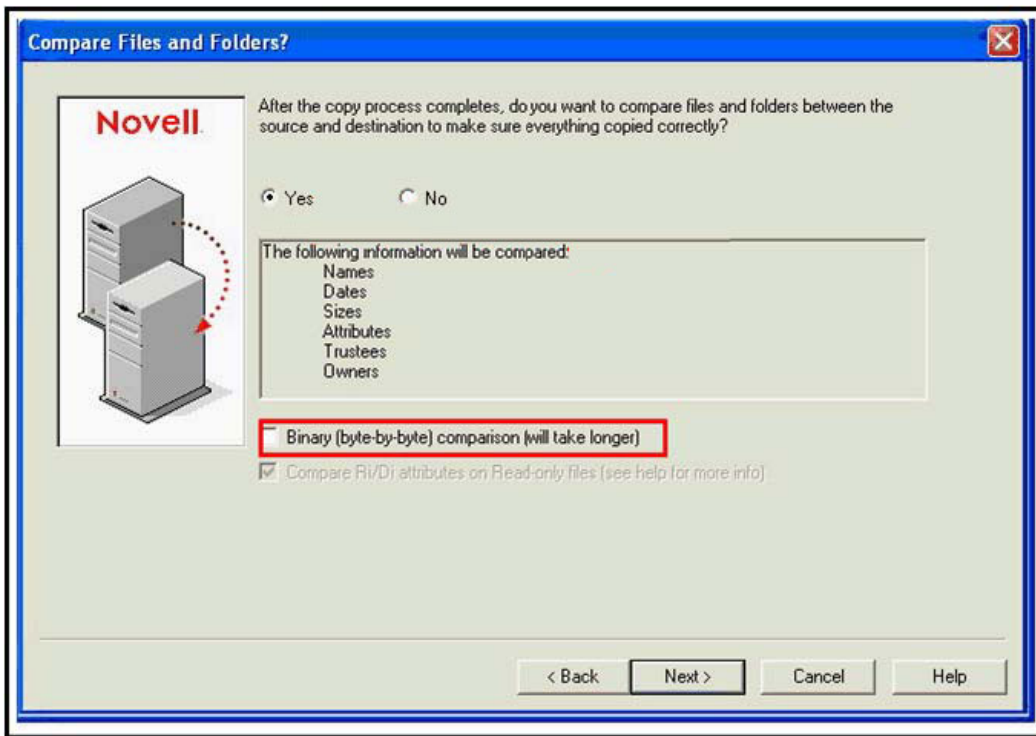
**QUESTION 99:**

**HOTSPOT**

You are consolidating critical point of sale transaction data from a NetWare 5.1 server to a NetWare 6.5 server. Click on the option you should select to ensure the highest degree of data protection during the consolidation.



Answer:



---

**QUESTION 100:**

You need to execute a move and a split operation on volumes hosted by your NetWare 6.5 server. Which utilities can be used to do this? (Choose 2.)

- A. iManager
- B. iMonitor
- C. ConsoleOne
- D. VOLMN.NLM
- E. NSSMOVE.NLM
- F. NSSSPLIT.NLM
- G. Remote Manager
- H. NetWare Administrator

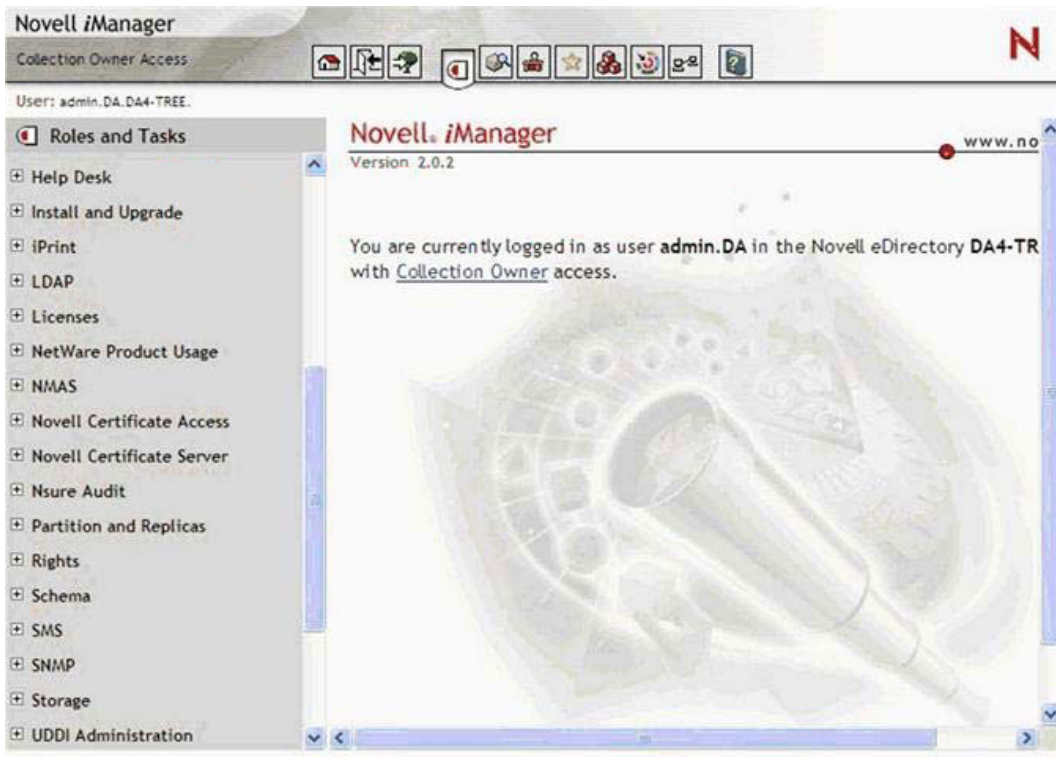
Answer: A,D

---

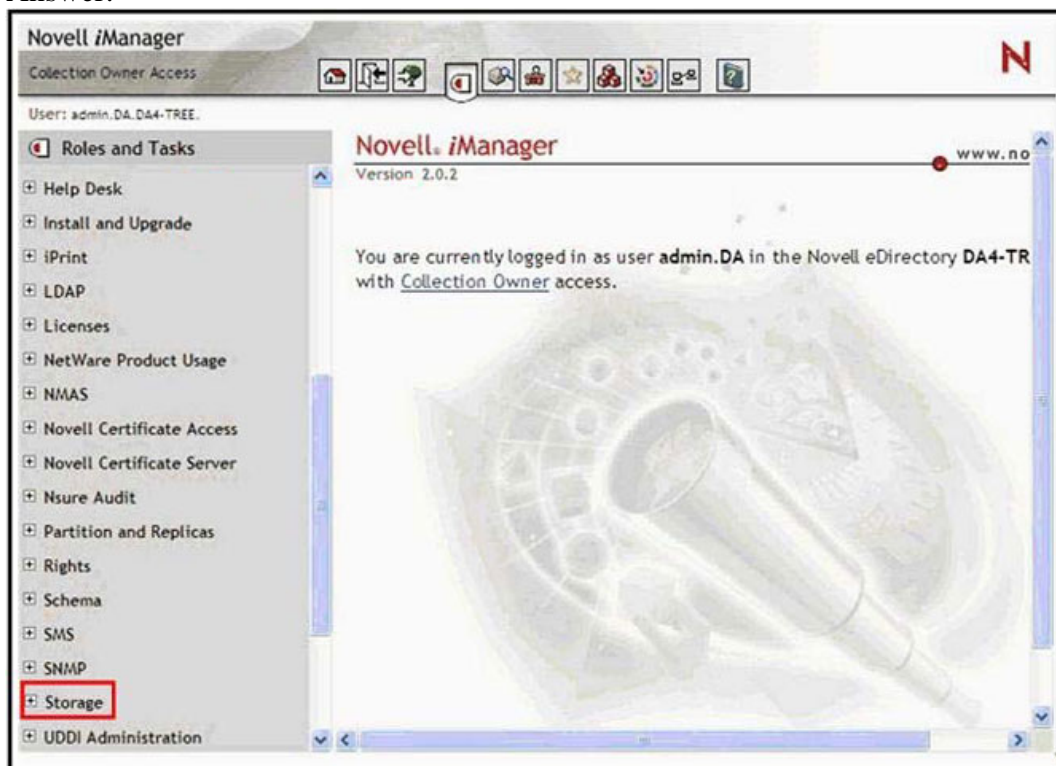
**QUESTION 101:**

HOTSPOT

Click the iManager role used to configure NSS move and split operations.



Answer:



QUESTION 102:

During installation, you configured a Branch Office Appliance with the IP address of 10.0.0.100. What URL should you use to access the Branch Office Web Administrator?

- A. <http://10.0.0.100:636>
- B. <https://10.0.0.100:631>
- C. <http://10.0.0.100:2222>
- D. <https://10.0.0.100:2222>
- E. <http://10.0.0.100/WebAdmin>
- F. <https://10.0.0.100/WebAdmin>
- G. <http://10.0.0.100:837/WebAdmin>

Answer: D

---

**QUESTION 103:**

Which SET parameter will cause the server to immediately restart the server after any software or hardware abend?

- A. SET AUTO RESTART AFTER ABEND = 0
- B. SET AUTO RESTART AFTER ABEND = 1
- C. SET AUTO RESTART AFTER ABEND = 2
- D. SET AUTO RESTART AFTER ABEND = 3

Answer: D

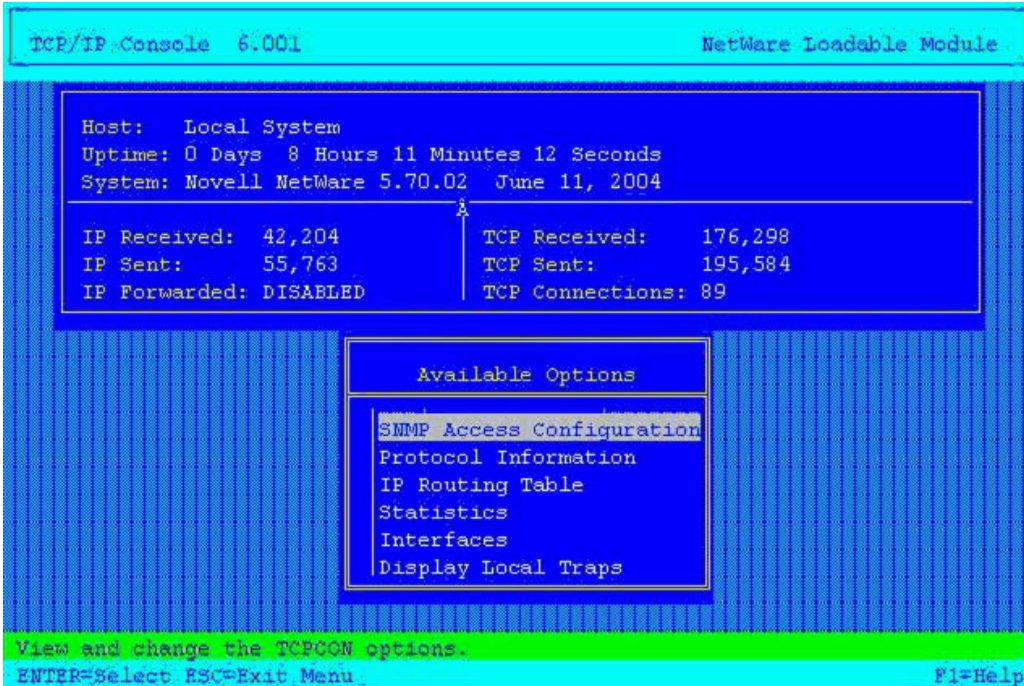
---

**QUESTION 104:**

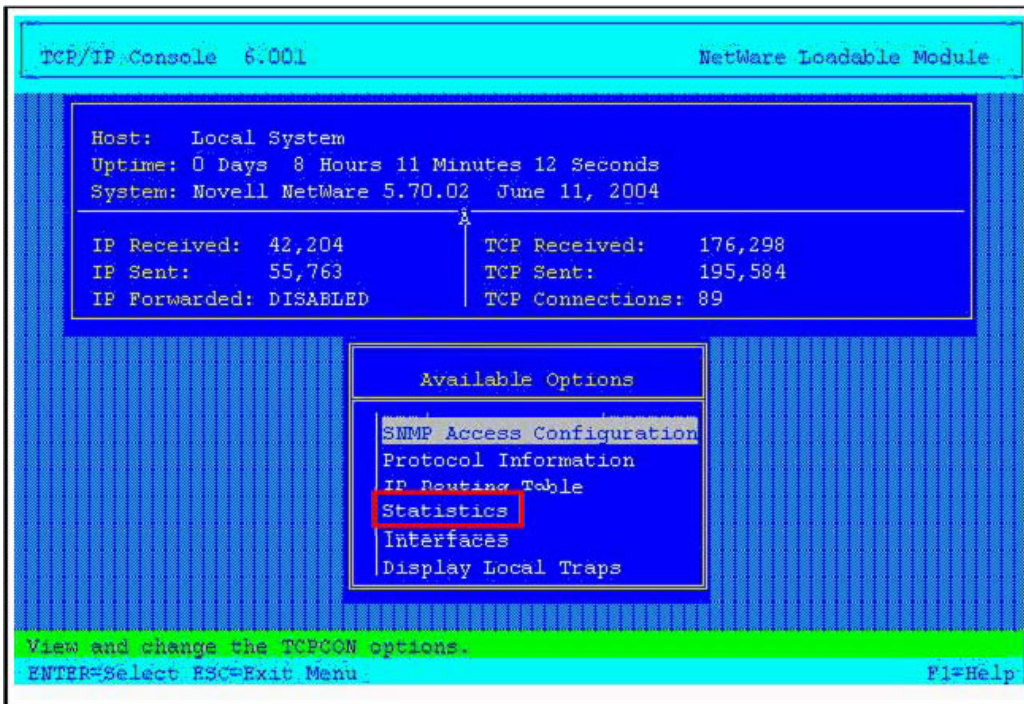
**HOTSPOT**

Click on the TCPCON option you would select if you wanted to view detailed statistics on Exterior Gateway Protocol (EGP) communications.





Answer:



### QUESTION 105:

Which local file does a NetWare 6.5 server use to resolve hostnames into IP addresses? (Choose 2.)

- A. Sys:\Etc\Hosts
- B. Sys:\Etc\Named
- C. Sys:\Etc\Resolve
- D. Sys:\System\Host
- E. Sys:\Etc\Hostname
- F. Sys:\Public\Resolve
- G. Sys:\Login\Resolver\Named

Answer: A,E

---

**QUESTION 106:**

You've installed one Appliance and created a Settings diskette. You want to use this diskette to install subsequent Appliances. What parameters do you need to edit on the diskette before you can do this? (Choose 3.)

- A. DNS name
- B. Tree name
- C. IP address
- D. Volume names
- E. Appliance name
- F. Server context
- G. LDAP server name
- H. Proxy server address
- I. Central Office Server name

Answer: A,C,E

---

**QUESTION 107:**

Which command checks the file system integrity on an NSS pool named POOLONE?

- A. VERIFY POOLONE
- B. NSSVERIFY /POOLONE
- C. VERIFY NSS=POOLONE
- D. NSS /POOLVERIFY=POOLONE

Answer: D

---

**QUESTION 108:**

What must be configured to allow partitions to be mirrored?

- A. RAID level 0
- B. Disk striping

- C. A hot fix area
- D. Partition labels
- E. Hot-swappable drives

Answer: C

---

**QUESTION 109:**

You are configuring DirXML to synchronize four eDirectory trees: DA-TREE, EMA-TREE, WIDGET-TREE, and ACME-TREE. Data should flow only from DA-TREE to the other three trees. You want all objects from DA-TREE, regardless of context, to be synchronized to a single container in each destination tree. How should you configure the eDirectory drivers in EMA-TREE, WIDGET-TREE, and ACME-TREE?

- A. Flat
- B. Dept
- C. Single
- D. Mirrored
- E. Subordinate
- F. Authoritative
- G. Consolidated
- H. Bi-directional

Answer: A

---

**QUESTION 110:**

Which SET parameter will cause the server to not try and recover from anyabend?

- A. SET AUTO RESTART AFTER ABEND = 0
- B. SET AUTO RESTART AFTER ABEND = 1
- C. SET AUTO RESTART AFTER ABEND = 2
- D. SET AUTO RESTART AFTER ABEND = 3

Answer: A

---

**QUESTION 111:**

In your tree, you've deployed Universal Password. After doing so, your users can't authenticate to the tree from their Windows 98 SE workstations, which have the Novell Client 3.2. What is the resolution to the problem? (Choose 3.)

- A. Install Client NCI 2.6 or later.
- B. Install NMA Client 2.2 or later.
- C. Run SDIDIAG.NLM on your servers.

- D. Deploy the Novell Client 3.4 on the workstations.
- E. Deploy the Novell Client 4.83 on the workstations.
- F. Enable bindery emulation on your NetWare servers.
- G. Configure each user object with a Simple Password.
- H. Upgrade the workstations to Windows 2000 Professional.
- I. Upgrade the workstations to Windows XP Home or Professional.

Answer: A,B,D

---

**QUESTION 112:**

What role does the eDirectory Interface component play in the DirXML Engine?

- A. Detects change events in eDirectory.
- B. Notifies eDirectory of application-generated events.
- C. Propagates events from the application to eDirectory.
- D. Propagates events from eDirectory to the application.
- E. Applies XML-based rules to each event presented to it.
- F. Defines the object classes and associated attributes you want to synchronize.
- G. Issues and receives XML documents and converts XDS events to application events.

Answer: A

---

**QUESTION 113:**

You want to create a pool snapshot of the APPS\_POOL on your server. You want to use APPS\_POOL\_S as the stored on pool. You want to name the snapshot APPS\_POOL\_S1. What command could you use from the server console to do this?

- A. mm snap APPS\_POOL APPS\_POOL\_S APPS\_POOL\_S1 create
- B. mm snap create APPS\_POOL APPS\_POOL\_S APPS\_POOL\_S1
- C. mm snap APPS\_POOL\_S1 APPS\_POOL APPS\_POOL\_S create
- D. mm snap create APPS\_POOL\_S APPS\_POOL APPS\_POOL\_S1
- E. mm snap create APPS\_POOL APPS\_POOL\_S1 APPS\_POOL\_S

Answer: B

---

**QUESTION 114:**

You're configuring a Branch Office deployment. Your Central Office Server resides behind your company's firewall. Your Branch Office Appliances reside at remote locations outside the firewall. To enable communication, which IP ports must you open on your firewall? (Choose 3.)

- A. 81
- B. 631

- C. 389
- D. 873
- E. 123
- F. 2222

Answer: B,D,F

---

**QUESTION 115:**

Which method allows you to increase the amount of storage space on a server without adding more storage devices?

- A. Overbook the storage pool.
- B. Increase the size of the storage pool.
- C. Decrease the size of the storage pool.
- D. Recreate the partitions that a storage pool contains.

Answer: A

---

**QUESTION 116:**

Your server is running slowly and you have noticed that server processes have reached the maximum. Which utility can you use to increase the Maximum Server Processes parameter?

- A. iMonitor
- B. iManager
- C. ConsoleOne
- D. CONFIG.NLM
- E. Remote Manager

Answer: E

---

**QUESTION 117:**

You're troubleshooting an intermittent connectivity problem between the Windows XP client workstations and the NetWare 6.5 server in your network. You need to test communications across your organization's routers using a packet size larger than the default size of 32 bytes used by the Windows PING utility. What switch will configure PING to send packets that are 1024 bytes (1 KB) in size?

- A. -c 1
- B. -n 1
- C. -l 1024
- D. -a 1024
- E. -s 1024

F. -ps 1024

Answer: C

---

**QUESTION 118:**

Your NetWare 6.5 server has been assigned the DNS name of da1.da.com. Which URL would you use in a browser window to access the iMonitor service on this server?

- A. http://da1.da.com:8009/nds-summary
- B. http://da1.da.com:8009/edir-summary
- C. https://da1.da.com:8009/nds-summary
- D. https://da1.da.com:8008/nds-summary
- E. https://da1.da.com:8009/edir-summary
- F. https://da1.da.com:8008/edir-summary

Answer: C

---

**QUESTION 119:**

CORRECT TEXT

A host that accesses iSCSI shared storage is called an iSCSI \_\_\_\_\_.

Answer: INITIATOR

---

**QUESTION 120:**

By default, how frequently does the schema synchronization run?

- A. Every 2 minutes
- B. Every 30 minutes
- C. Every 60 minutes
- D. Every 2 hours
- E. Every 4 hours

Answer: E

---

**QUESTION 121:**

How does DirXML determine when to synchronize data between connected systems?

- A. It polls all systems at specified intervals; synchronizing all changes.
- B. It detects changes as they occur in one system and synchronizes them to the other systems.
- C. It schedules synchronization at specified intervals; synchronizing only that data which

has changed since the last synchronization.

D. It re-synchronizes all data on all systems at specified intervals regardless of whether the data has changed or not since the last synchronization.

Answer: B

---

**QUESTION 122:**

What does the DirXML Placement Rule do?

A. Controls the way data flows from one system to another.

B. Locates an existing object that matches the object generating the event.

C. Maps the names of attributes and classes between eDirectory and the external application.

D. Establishes associations between an existing entry in eDirectory and an existing entry in the external application.

E. Controls whether an object will be added during an Add event based on the existence of required attribute values.

F. Determines the location of the new object in eDirectory or in the external application during an Add Object event.

Answer: F

---

**QUESTION 123:**

You're troubleshooting a routing problem in your organization's network. To test a hypothesis, you need to run the TRACERT command from one of your Windows XP workstations to trace the route to corp.da.com with the maximum number of router hops constrained to 4. Which command should you use to do this?

A. TRACERT -4 corp.da.com

B. TRACERT corp.da.com -4

C. TRACERT -H 4 corp.da.com

D. TRACERT -R 4 corp.da.com

E. TRACERT -A 4 corp.da.com

F. TRACERT corp.da.com -D 4

Answer: C

---

**QUESTION 124:**

Which is a useful troubleshooting step if a server is not communicating?

A. Verify that cache buffers are over 20%.

B. Verify that the server is not out of packet receive buffers.



- C. Verify that the DOS=HIGH command is not in CONFIG.SYS.
- D. Remove memory managers from loading in AUTOEXEC.NCF.

Answer: B

---

**QUESTION 125:**

You are working in a pure IP environment and the workstation is not communicating with the server. Which are some valid troubleshooting steps that can be executed on the workstation to help identify the problem? (Choose 3.)

- A. Ping the server.
- B. Use TRACERT.
- C. Verify that DSTRACE is not running.
- D. Use CONFIG to verify that the network board is bound.
- E. Verify the workstations IP address with the IPCONFIG command.
- F. Run DSTRACE to verify that there are no DS communication issues between the workstation and server.

Answer: A,B,E

---

**QUESTION 126:**

How can you configure an existing English NetWare 6.5 server to use the Russian code page?

- A. Copy the LC\_855.007 file from the NetWare 6.5 CD to SYS:\SYSTEM and rename it LCONFIG.850.
- B. Copy the LC\_855.007 file from the NetWare 6.5 CD to SYS:\SYSTEM and rename it LCONFIG.SYS.
- C. Copy the LC\_855.007 file from the NetWare 6.5 CD to C:\NWSERVER and rename it LCONFIG.850.
- D. Copy the LC\_855.007 file from the NetWare 6.5 CD to C:\NWSERVER and rename it LCONFIG.SYS.
- E. Copy the LC\_855.007 file from the NetWare 6.5 CD to C:\NWSERVER\LCONFIG and rename it LCONFIG.SYS.
- F. Copy the LC\_855.007 file from the NetWare 6.5 CD to C:\NWSERVER\LCONFIG and rename it LCONFIG.850.

Answer: D

---

**QUESTION 127:**

The DirXML Starter pack includes both licensed and evaluation drivers. Which licensed drivers are included in the DirXML Starter Pack? (Choose 3.)

- A. eDirectory
- B. PeopleSoft
- C. Lotus Notes
- D. NT Domains
- E. Active Directory
- F. Microsoft Exchange

Answer: A,D,E

---

**QUESTION 128:**

Which command checks the file system integrity on an NSS pool named POOLONE?

- A. VERIFY POOLONE
- B. NSSVERIFY /POOLONE
- C. VERIFY NSS=POOLONE
- D. NSS /POOLVERIFY=POOLONE

Answer: D

---

**QUESTION 129:**

Which Branch Office component replicates data from the Branch Office Appliance to the Central Office Server?

- A. LDAP
- B. UDDI
- C. CUPS
- D. Rsync
- E. MySQL
- F. NCPSync
- G. CIFS-Sync
- H. SybaseAnywhere Server

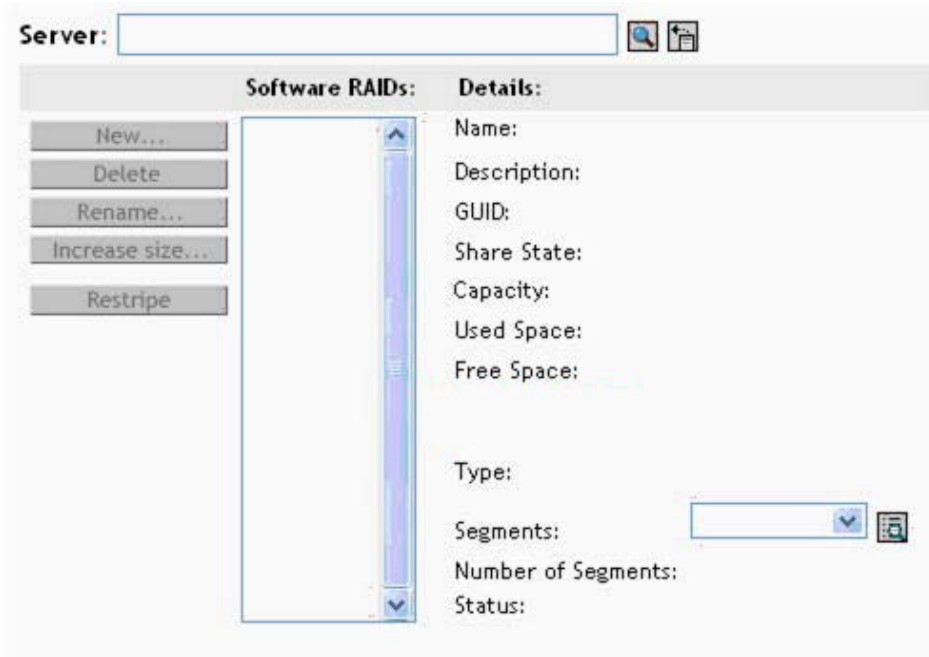
Answer: D

---

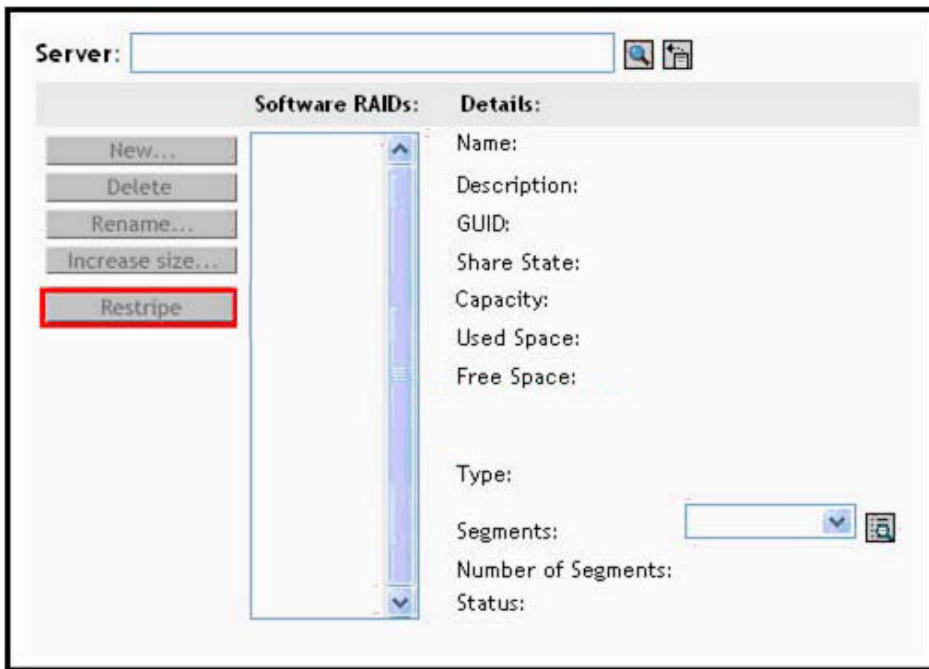
**QUESTION 130:**

**HOTSPOT**

You just added a second hard drive to your RAID system. Click the area of the graphic that redistributes data across all RAID devices, including the new hard drive.



Answer:



### QUESTION 131:

A NetWare 4.2 server is currently servicing one of your branch offices. All of the user's data is saved on the USERS volume. You are deploying a Branch Office solution. To save time, you want to install the Branch Office Appliance software on top of the NetWare 4.2 server and then simply mount the existing USERS volume as an Appliance volume. Assuming the server hardware meets the system

requirements for the Branch Office Appliance, will this work?

- A. Yes, NetWare 4.2 volumes are compatible with the Appliance software.
- B. No, NetWare 4.2 traditional volumes are incompatible with the Appliance software.
- C. No, the Appliance installation program removes all partitions and re-images the entire drive.
- D. No, the Appliance software may corrupt the data on the NetWare 4.2 volume when it is mounted.
- E. Yes, but you must first install Novell Storage Services (NSS) on the server and upgrade the volume.
- F. Yes, but you must first add the long name space (LONG.NAM) to the USERS volume before installing the Appliance.

Answer: C

---

**QUESTION 132:**

You have configured your NetWare 6.5 server so that if it abends, you must respond manually. Your server abended with a processor exception and lists a short list of options for you to choose from. You want to perform a core dump, which option should you choose?

- A. Q
- B. R
- C. S
- D. X
- E. Y

Answer: E

---

**QUESTION 133:**

Your Branch Office Appliance is connected to your Central Office Server using a T1 link. Under optimal conditions, how fast can Rsync transfer data with this configuration?

- A. 1.5 KB/second
- B. 1.5 MB/second
- C. 3.8 MB/second
- D. 1.5 GB/second
- E. 3.8 GB/second

Answer: B

---

**QUESTION 134:**

Which method allows you to increase the amount of storage space on a server without adding more storage devices?

- A. Overbook the storage pool.
- B. Increase the size of the storage pool.
- C. Decrease the size of the storage pool.
- D. Recreate the partitions that a storage pool contains.

Answer: A

---

**QUESTION 135:**

Your NetWare 6.5 server has been assigned the DNS name of da1.da.com. Which URL would you use in a browser window to access the iMonitor service on this server?

- A. http://da1.da.com:8009/nds-summary
- B. http://da1.da.com:8009/edir-summary
- C. https://da1.da.com:8009/nds-summary
- D. https://da1.da.com:8008/nds-summary
- E. https://da1.da.com:8009/edir-summary
- F. https://da1.da.com:8008/edir-summary

Answer: C

---

**QUESTION 136:**

You're configuring your organization's firewall to support your Nterprise Branch Office deployment. Your Branch Office Appliances need to be able to communicate using Rsync through the firewall with your Central Office Server. Which IP port does Rsync run on?

- A. 21
- B. 443
- C. 631
- D. 873
- E. 1229
- F. 2222

Answer: D

---

**QUESTION 137:**

The Migration Wizard fails when you try to run it on your Windows XP Home workstation with Novell Client 4.83 installed. Your computer has 196 MB of RAM and Windows Service Pack 2 installed. What is causing the problem?

- A. You must upgrade to Novell Client 4.9.
- B. The workstation needs additional RAM.
- C. You must use Windows 98 or ME instead of XP Home.
- D. Migration Wizard is not compatible with Service Pack 2.
- E. Migration Wizard is not compatible with Windows XP Home.

Answer: E

---

**QUESTION 138:**

Where is Server.nlm located?

- A. Sys:\System
- B. Sys:\\_Netware
- C. Sys:\System\Nls
- D. C:\Nwserver\Nlms
- E. C:\Nwserver\Server.exe

Answer: E

---

**QUESTION 139:**

To balance the load in your network, you want to move heavily used volume SYS, an NSS volume, from OPS.Contractors.DA to an NSS volume on OPS-2.Contractors.D

- A. You have set the DFS Management Context in your tree to .Contractors.D
- A. Given that your server has Support Pack 1 applied, can you perform this action?
- A. No, NSS volumes can't be moved.
- B. No, you can't move the SYS volume.
- C. No, you must first apply Support Pack 1.1 or later.
- D. No, you can't move an NSS volume to another NSS volume.
- E. No, the DFS Management Context must be set higher in the tree.
- F. No, the destination volume must reside in a different eDirectory tree.
- G. Yes, the prerequisite requirements for this move request have been met.
- H. No, move operations for NSS volumes can only occur between servers in different contexts.

Answer: B

---

**QUESTION 140:**

Which web-based utility allows you to move master replicas from one server to

another?

- A. iMonitor
- B. iManager
- C. ConsoleOne
- D. CONFIG.NLM
- E. Remote Manager

Answer: B

---

**QUESTION 141:**

Which command would you issue from the console of a NetWare 6.5 server to view the interrupt used by its network board?

- A. IRQ
- B. TCPCON
- C. CONFIG
- D. NICCONFIG
- E. NSLOOKUP
- F. IRQCONFIG
- G. MACLOOKUP

Answer: C

---

**QUESTION 142:**

You are configuring DirXML to synchronize four eDirectory trees: DA-TREE, EMA-TREE, WIDGET-TREE, and ACME-TREE. Data should flow only from DA-TREE to the other three trees. You want all objects from DA-TREE, regardless of context, to be synchronized to a single container in each destination tree. How should you configure the eDirectory drivers in EMA-TREE, WIDGET-TREE, and ACME-TREE?

- A. Flat
- B. Dept
- C. Single
- D. Mirrored
- E. Subordinate
- F. Authoritative
- G. Consolidated
- H. Bi-directional

Answer: A

---

**QUESTION 143:**

For troubleshooting purposes, you need to stop the secondary processors on your NetWare 6 server. Which command stops secondary processors?

- A. UNLOAD PSM
- B. STOP PROCESSORS
- C. UNLOAD PROCESSORS
- D. STOP SECONDARY PROCESSORS
- E. SET AUTO START PROCESSORS = OFF

Answer: B

---

**QUESTION 144:**

When implementing the Archive and Versioning service, what is the role of the ARKSQL.CNF file?

- A. It contains configuration settings for the Archive Server.
- B. It contains sample XML code for creating versioning jobs.
- C. It contains XML code for configuring an upgrade from Archive and Versioning Services 1.0.
- D. It contains configuration settings for the Archive and Versioning Services MySQL instance.
- E. It contains configuration settings for configuring the Archive and Versioning Services to work with an Oracle database.
- F. It contains configuration settings for configuring the Archive and Versioning Services to work with a Sybase database.
- G. It contains configuration settings for configuring the Archive and Versioning Services to work with a Microsoft SQL Server database.

Answer: D

---

**QUESTION 145:**

You want to activate a pool snapshot named VOL1\_POOL\_S4. Which command should you enter at the server console?

- A. mm VOL1\_POOL\_S4
- B. mm activate VOL1\_POOL\_S4
- C. nss activate VOL1\_POOL\_S4
- D. nss /activate VOL1\_POOL\_S4
- E. mm snap activate VOL1\_POOL\_S4
- F. nss snap activate VOL1\_POOL\_S4

Answer: E



---

**QUESTION 146:**

You have created a volume named ARCHIVE for file versioning. You need to configure your MySQL server to work with Archive and Versioning Services. To do this, which command would you would enter at the server console to install a new MySQL database that uses the ARCHIVE volume and runs on port 3306?

- A. `mysql --datadir=ARCHIVE:/ --port=3306`
- B. `mysqld_install_db dir=ARCHIVE:/ port=3306`
- C. `load mysql --datadir=ARCHIVE:/ --port=3306`
- D. `mysql_install_db datadir=ARCHIVE:/ port=3306`
- E. `mysql_install_db --datadir=ARCHIVE:/ --port=3306`

Answer: E

---

**QUESTION 147:**

When does synthetic time occur in an eDirectory tree?

- A. When there is no time source in the tree
- B. When a secondary server acts like a time source
- C. When time is not synchronized throughout the network
- D. When an object is modified within the same second from two different sources
- E. When an eDirectory object has a modification time stamp in the future of the current network time

Answer: E

---

**QUESTION 148:**

If an object is missing a mandatory attribute, how will this object be displayed in ConsoleOne?

- A. As a grayed-out object
- B. As a black-and-white object
- C. As a question mark in a circle
- D. As a question mark in a square
- E. As two numbers with a dash between them (eg. 9-6)

Answer: C

---

**QUESTION 149:**

If user access provisioning has been configured in the Nterprise Branch Office system, what happens when a user logs into the Branch Office Appliance for the

first time?

- A. The login will fail until the administrator creates an account on the Appliance.
- B. The Provisioner creates a user account in the Central Office Server's eDirectory tree.
- C. The Provisioner notifies the administrator that a new user account needs to be created on the Appliance.
- D. The Provisioner creates a temporary user account on the Appliance that has a default set of rights for basic system access.
- E. The Provisioner launches the Appliance web-based administration tool and prompts the user to create a new user account.
- F. The Provisioner creates a user account on the Appliance with the same username and password as in the Central Office Server's eDirectory tree.

Answer: F

---

**QUESTION 150:**

CORRECT TEXT

A server system that functions as a disk controller for an iSCSI shared disk system is called an iSCSI \_\_\_\_\_.

Answer: TARGET

---

**QUESTION 151:**

Files larger than a certain size can't be replicated by Rsync. How big must a file be for this to happen?

- A. 256 MB
- B. 512 MB
- C. 1 GB
- D. 2 GB
- E. 4 GB
- F. 1 TB

Answer: D

---

**QUESTION 152:**

You are migrating a NetWare 5.1 server to NetWare 6.5. You've reached the eDirectory migration portion of the Migration Wizard. The first step in this process edits the server name in several configuration files on the destination server. Which files are included in this process? (Choose 2.)

- A. Ctx.cfg

- B. Csl.cfg
- C. Slpda.cfg
- D. Snmp.cfg
- E. Cifsctx.cfg
- F. Attypes.cfg
- G. Startup.ncf
- H. Rootcert.der
- I. Timesync.cfg

Answer: D,I

---

**QUESTION 153:**

Which statement best describes a multitasking operating system?

- A. Data is distributed between processors to prevent over-utilization.
- B. A single-processor can run 2 or more programs at the same time.
- C. Multiple threads can be run on different processors at the same time.
- D. Application threads can simultaneously be executed on different processors.
- E. A system can determine if a processor is over-utilized and initiate load balancing.

Answer: B

---

**QUESTION 154:**

What can a DFS junction point to? (Choose 2.)

- A. A subdirectory on a volume on the local server.
- B. The root directory of a volume on the local server.
- C. A subdirectory on a volume on a remote server in the same eDirectory tree.
- D. A subdirectory on a volume on a remote server in a different eDirectory tree.
- E. The root directory of a volume on a remote server in the same eDirectory tree.
- F. The root directory of a volume on a remote server in a different eDirectory tree.

Answer: B,E

---

**QUESTION 155:**

Which NETSTAT switch on a Windows XP workstation shows all connections and listening ports?

- A. -a
- B. -r
- C. -s
- D. -cp
- E. -c -p

- F. -p TCP
- G. -p UDP

Answer: A

---

**QUESTION 156:**

You're re-installing the Appliance software on your server. What will happen to your existing user data?

- A. All existing data will be lost when the appliance re-images the drive.
- B. The installation program will ask if you want to delete or preserve the existing data.
- C. The installation program will prompt you that the Appliance software already exists and will exit.
- D. The installation program will save the existing data in the Sys:\System.bak file on the Appliance.
- E. The existing data will be detected and copied to a new partition where it can be accessed when the installation is complete.

Answer: B

---

**QUESTION 157:**

Which tool is used to fix problems with an NSS pool that could not be corrected with other techniques?

- A. VCU
- B. VERIFY
- C. NSSFIX
- D. REBUILD
- E. NSSSCAN
- F. POOLREPAIR

Answer: D

---

**QUESTION 158:**

After issuing the MODULES command at the server console of your NetWare 6.5 server, you notice that a particular NLM is displayed in purple. What does this indicate about the module?

- A. The NLM was auto-loaded by another module.
- B. The NLM was loaded from Startup.ncf or from Autoexec.ncf.
- C. The NLM was bound into Server.exe and was loaded from there.
- D. The NLM was bound into Server.exe, but was also found in C:\Nwserver and was loaded from there instead.

Answer: A

---

**QUESTION 159:**

You are migrating a NetWare 5.1 server to NetWare 6.5. The source server name is SLCFIN and is located in FINANCE.SLC.DA in the DA-TREE. You install the pre-migration NetWare 6.5 server as SLCFIN located in .DA in the TEMP-TREE. Why will the migration fail?

- A. The source tree name must be the same as the destination tree name.
- B. The source server name can't be the same as the destination server name.
- C. The source server context must be the same as the destination server context.
- D. The source tree name and the source server context must be the same as the destination tree name and destination tree context.
- E. You can't migrate a NetWare 5.1 server directly to NetWare 6.5. You must first upgrade it to a NetWare 6.0 server, then migrate it to NetWare 6.5.

Answer: B

---

**QUESTION 160:**

You are implementing an iSCSI SAN on your server. You need to load the iSCSI initiator service on the server. Which command should you issue at the server console?

- A. TON
- B. ION
- C. ISCSINIT
- D. INITIATOR
- E. SET ISCSI INITIATOR=ON
- F. NSS /ISCSIINITIATOR=ON

Answer: B

---

**QUESTION 161:**

What is the function of the DirXML Schema Mapping Rule?

- A. Controls the way data flows from one system to another.
- B. Locates an existing object that matches the object generating the event.
- C. Maps the names of attributes and classes between eDirectory and the external application.
- D. Establishes associations between an existing entry in eDirectory and an existing entry in the external application.

- E. Controls whether an object will be added during an Add event based on the existence of required attribute values.
- F. Determines the location of the new object in eDirectory or in the external application during an Add Object event.

Answer: C

---

**QUESTION 162:**

Your organization has three regional Windows NT Domains for each geographic location. A Windows NT 4 server hosts each domain. You also have a NetWare 6.0 server providing services for your organization's headquarters. You've just installed a high-end NetWare 6.5 server into its own tree and want to consolidate all the servers in your organization to the new server using the Server Consolidation Utility 3.0. Can this be done?

- A. Yes, the network meets the prerequisite requirements.
- B. No, the Server Consolidation Utility 3.0 can't consolidate Windows NT Domains.
- C. No, multiple Domains can't be consolidated to a NetWare 6.5 server using the Server Consolidation Utility 3.0.
- D. No, NetWare 6.0 servers can't be consolidated to a NetWare 6.5 server using the Server Consolidation Utility 3.0.
- E. No, you can't consolidate a mixture of NT Domains and NetWare servers to a NetWare 6.5 server using the Server Consolidation Utility 3.0.

Answer: A

---

**QUESTION 163:**

What role does the Join Engine component play in the DirXML Engine?

- A. Detects change events in eDirectory.
- B. Notifies eDirectory of application-generated events.
- C. Propagates events from the application to eDirectory.
- D. Propagates events from eDirectory to the application.
- E. Applies XML-based rules to each event presented to it.
- F. Issues and receives XML documents; converts XDS events to application events.
- G. Defines the object classes and associated attributes you want to synchronize.

Answer: E

---

**QUESTION 164:**

To accommodate increased storage needs, you need to increase the size of an NSS storage pool on your NetWare 6.5 server. Which tools can be used to accomplish this? (Choose 2.)

- A. VCU
- B. NSSMU
- C. VERIFY
- D. REBUILD
- E. ConsoleOne
- F. NDS Manager
- G. Remote Manager

Answer: B,G

---

**QUESTION 165:**

**HOTSPOT**

You want to immediately purge an NSS logical volume that was just deleted. Click the area of the graphic that allows you to accomplish this task.



Answer:



---

**QUESTION 166:**

You are planning your NetWare deployment's NSS strategy. A part of this strategy includes using pool snapshot. How many snapshots can exist on a particular stored-on pool?

- A. 16
- B. 32
- C. 64
- D. 128

- E. 256
- F. 500
- G. 1000

Answer: F

---

**QUESTION 167:**

You want to move the DATA volume on DA2 to the VOL1 volume on DA1. DA1 is located in the .Contractors.DA container in the DA-TREE tree. Which command, when issued from the server console, will do this?

- A. VLMN MOVE DATA VOL1
- B. VLMN MOVE DATA VOL1 DA1
- C. VLMN MOVE DATA VOL1 .DA1.Contractors.DA.DA-TREE
- D. VOLMN MOVE DATA VOL1 .DA1.Contractors.DA.DA-TREE
- E. VOLMN MOVE DATA VOL1 DA1.Contractors.DA.DA-TREE.
- F. VOLMN MOVE DATA VOL1 .DA1.Contractors.DA.DA-TREE.

Answer: F

---

**QUESTION 168:**

You are configuring DirXML to synchronize four eDirectory trees: DA-TREE, EMA-TREE, WIDGET-TREE, and ACME-TREE. Data should flow only from DA-TREE to the other three trees. Data from the other trees should not flow into DA-TREE. How should you configure the eDirectory driver in the DA-TREE?

- A. Flat
- B. Dept.
- C. Master
- D. Primary
- E. Mirrored
- F. Subordinate
- G. Authoritative
- H. Bi-directional
- I. DirXML can't be configured in this manner.

Answer: G

---

**QUESTION 169:**

You have configured a DFS Management Context with the VLDB service running on OPS-2. In the USERS directory on OPS-2's DATA volume, you created a junction to the root of the APPS volume on server IS-FS1. You then created a CIFS share for the USERS directory and granted the appropriate rights to your user and



group objects to access the directory. When users access the junction from their clientless Windows XP Professional workstations, it fails to take them to APPS on IS-FS1. What is the resolution to this problem?

- A. Install Novell Client 4.83.
- B. Load VLDB.NLM on IS-FS1.
- C. Add a VLDB replica to IS-FS1.
- D. Apply Windows XP Service Pack 2.
- E. Enable DFS support for CIFS clients.

Answer: E

---

**QUESTION 170:**

Which utility is used to verify that each server has the cryptographic keys necessary to securely communicate with the other servers in the tree?

- A. SSL.NLM
- B. CONFIG.NLM
- C. SDIDIAG.NLM
- D. SECURE.NLM
- E. MONITOR.NLM
- F. PKICHECK.NLM
- G. SDINOTES.NLM
- H. SSLCHECK.NLM
- I. SECUREDIAAG.NLM

Answer: C

---

**QUESTION 171:**

After migrating a NetWare 6.5 server to another NetWare 6.5 server, which directories do you need to copy from the migration backup directory to the corresponding directories on the destination server? (Choose 2.)

- A. Sys:\Sys.mig\Etc
- B. Sys:\Sys.mig\Java
- C. Sys:\Sys.mig\Ipconf
- D. Sys:\Sys.mig\System
- E. Sys:\Sys.mig\Nds.001
- F. Sys:\Sys.mig\Apache2

Answer: B,C

---

**QUESTION 172:**

What is the function of the DirXML Matching Rule? (Choose 2.)

- A. Controls the way data flows from one system to another.
- B. Locates an existing object that matches the object generating the event.
- C. Maps the names of attributes and classes between eDirectory and the external application.
- D. Establishes associations between an existing entry in eDirectory and an existing entry in the external application.
- E. Controls whether an object will be added during an Add event based on the existence of required attribute values.
- F. Determines the location of the new object in eDirectory or in the external application during an Add Object event.

Answer: B,D

---

**QUESTION 173:**

When a server abends, a message file gets created. By default, where is this file placed when the server is restarted?

- A. C:\
- B. SYS:
- C. SYS:\ETC
- D. SYS:\ABEND
- E. SYS:\PUBLIC
- F. SYS:\SYSTEM
- G. C:\NWSERVER
- H. SYS:\SYSTEM\ABEND

Answer: F

---

**QUESTION 174:**

You need to migrate your existing NetWare server, which is running NetWare 4.2, to NetWare 6.5. You've installed Migration Wizard 8 on your Windows 2000 Professional workstation, which also has the Novell Client 4.83 installed. You've installed the latest Support Packs on both your source and destination servers. However, when you try to model the migration project, you are unable to access the source server and tree. What is the cause of this problem?

- A. You need to bind IPX on the destination server.
- B. Migration Wizard 8 doesn't support NetWare 4.2 servers.
- C. Migration Wizard 8 doesn't support Novell Client 4.83.
- D. Migration Wizard 8 doesn't run reliably on Windows 2000 Professional.
- E. You shouldn't have installed a Support Pack on the destination server.

Answer: B

---

**QUESTION 175:**

Which command will allow open files on an NSS volume named APPS to be copied during a consolidation project?

- A. NSS /NOMIGRATION=APPS
- B. NSS /FILECOPYONWRITE=APPS
- C. NSS /READAHEADBLKS=APPS:2
- D. NSS /VOLUMEAUTOACTIVATE=APPS
- E. SET ALLOW OPEN FILE ACCESS=ON
- F. NSS /STOPNORMALCOMPRESSION=APPS
- G. SET STOP NORMAL COMPRESSION = ON

Answer: B

---

**QUESTION 176:**

You need to add an A record to the DNS service running on your NetWare 6.5 server. Which utility should you use to do this?

- A. iMonitor
- B. iManager
- C. ConsoleOne
- D. Remote Manager
- E. DNS Administrator
- F. NetWare Administrator

Answer: B

---

**QUESTION 177:**

**HOTSPOT**

The graphic shows the NSS volume attributes. Click the feature that you should activate to assign a maximum allotment of space for a directory.

**Volume Properties**

Properties: DATA

Attributes Statistics Quotas Usage

☒ Backup  
☐ Compression  
☐ Data Shredding  
 Number of shredding cycles   
☐ Directory Quotas  
☐ Flush Files Immediately

☐ Migration  
☐ Modified File List(MFL)  
☒ Salvage Files  
☐ Snapshot - File Level  
☐ User Space Quotas  
☐ User-level Transaction Model

Quota:  Bytes

☒ Allow volume quota to grow to the pool size

OK Cancel Apply

Answer:

**Volume Properties**

Properties: DATA

Attributes Statistics Quotas Usage

☒ Backup  
☐ Compression  
☐ Data Shredding  
 Number of shredding cycles   
☐ Directory Quotas  
☐ Flush Files Immediately

☐ Migration  
☐ Modified File List(MFL)  
☒ Salvage Files  
☐ Snapshot - File Level  
☐ User Space Quotas  
☐ User-level Transaction Model

Quota:  Bytes

☒ Allow volume quota to grow to the pool size

OK Cancel Apply

### QUESTION 178:

Which files are created when a server has been designated as host for the DFS VLDB service? (Choose 3.)

- A. SYS:\ETCVLDB.CFG
- B. SYS:\ETC\VLDB.DAT
- C. SYS:\ETC\VLDB.MDB
- D. SYS:\ETC\VLRPR.LOG
- E. SYS:\SYSTEM\VLDB.DAT
- F. SYS:\ETC\VLDBCFG.DAT
- G. SYS:\SYSTEM\VLDB.MDB

Answer: B,D,F