



Exam : HP0-841

Title : Designing and Implementing HP SAN Solutions

Ver : 10-22-2008

QUESTION 1

On an NFS server, which commands can you use to determine which clients have mounted exported file systems? (Select two.)

- A. more /etc/rmtab
- B. mount -v
- C. showmount -a
- D. more /etc/mounts
- E. more /etc/nfstab

Answer: A,C

QUESTION 2

What is the main script that controls the start up of system services?

- A. /sbin/preinitrc
- B. /sbin/iointrc
- C. /sbin/bcheckrc
- D. /sbin/rc

Answer: D

QUESTION 3

Which features are enabled by the HP-UX WBEM (Web-Based Enterprise Management) provider instrumentation? (Select three.)

- A. HP Systems Insight Manager (HP SIM) user configuration
- B. HP SIM and SMH display of system health and properties
- C. HP Systems Insight Manager (HP SIM) inventory reports
- D. HP Systems Management Homepage (SMH) display of component health
- E. Management processor display of health of the server it is managing
- F. HP System Management Homepage (SMH) configuration snapshots and inventory reports
- G. HP-UX Software Assistant capabilities

Answer: B,C,D

QUESTION 4

Which Ignite command makes a recovery tape of all files in vg00?

- A. make_tape_recovery -x inc_entire=/dev/vg00 -a /dev/rmt/1mn
- B. make_recovery -x inc_entire=/dev/vg00 -a /dev/rmt/1mn
- C. make_tape_recovery -x inc_vg00=all -a /dev/rmt/1mn
- D. make_net_recovery -x inc=/dev/vg00 -d /dev/rmt/1mn

Answer: A

QUESTION 5

What does the pvcreate command create?

- A. the physical links
- B. a hard partition
- C. the lvm disk resident structures
- D. a physical volume device file

Answer: C

QUESTION 6

Which protocol is used to assign an IP address to hosts?

- A. DNS
- B. DHCP
- C. BOOTP
- D. BIND

Answer: B

QUESTION 7

On an NFS client, which configuration file is used to name the local mount point when mounting a file system from an NFS server during system boot?

- A. nfs.conf
- B. fstab
- C. exports
- D. nfstab

Answer: B

QUESTION 8

Why do you use the HP-UX System Management Homepage (SMH) and its functional areas? (Select three.)

- A. to manage a small number of systems in your environment
- B. to see the health of the system and its components
- C. to configure the HP-UX Event Monitoring System
- D. to perform HP-UX management tasks such as configuration
- E. to run inventory reports and snapshot comparisons on the HP-UX system
- F. to manage Web-Based Enterprise Management subscriptions and view events on the system

Answer: B,D,F

QUESTION 9

Which statements are true regarding threads and processes? (Select two.)

- A. A thread is a component of a process.
- B. A process is a container for a set of instructions that carry out a task of the program.
- C. A thread forces the entire process to run on a single set of resources.
- D. Threads and processes have nothing to do with each other.
- E. A process is a component of a thread.

Answer: A,B

QUESTION 10

What do physical volume links provide in HP-UX 11i v2?

- A. access to a spare disk
- B. an alternate path to a disk
- C. automatic load balancing
- D. improved RAID performance

Answer: B

QUESTION 11

Which feature of HP CIFS allows a Unix uid or gid to be mapped to a Windows account or group?

- A. smbclient
- B. winbind
- C. nmbd
- D. smbd

Answer: B

QUESTION 12

Which command configures an IP address on an HP-UX system?

- A. ifconfig
- B. netconfig
- C. lanconfig
- D. ipconfig

Answer: A

QUESTION 13

DRAG DROP

Match each network configuration file with its common definition.

place here	Contains DNS client configuration information
place here	Defines databases to be used and search order for aliases, password, hosts, etc.
place here	Used for permission checking when executing remote mounts, remote logins, and
place here	Associates Internet (IP) addresses with official network names and aliases.

Select from these

/etc/netgroup	/etc/nsswitch.conf	/etc/resolv.conf	/etc/networks
---------------	--------------------	------------------	---------------

Answer:

Match the network configuration files with their intended use.

/etc/resolv.conf	Contains DNS client configuration information
/etc/nsswitch.conf	Defines databases to be used and search order for aliases, password, hosts, etc.
/etc/netgroup	Used for permission checking when executing remote mounts, remote logins, and
/etc/networks	Associates Internet (IP) addresses with official network names and aliases.

QUESTION 14

Which HP-UX 11i v3 command allows SCSI device management and diagnoses?

- A. scsimgr
- B. scsiutil
- C. iofind
- D. ioinit

Answer: A

QUESTION 15

Information about the last installation for the local system is stored in which location?

- A. /var/adm/sw/filesets
- B. /var/adm/sw/products
- C. /var/adm/sw/swinstall.log

D. /var/adm/sw/depot

Answer: C

QUESTION 16

How can you enable only NFS version 4 support on HP-UX 11i v3?

- A. Change the NFSv4 kernel parameter to yes, recompile the kernel and reboot.
- B. Using only NFSv4 is not supported; NFSv2 and NFSv3 are always enabled.
- C. Set the configuration parameters NFS_SERVER_VERSMIN and NFS_SERVER_VERSMAX to 4.
- D. HP-UX v3 does not support NFSv4.

Answer: C

QUESTION 17

In which order are cron.allow and cron.deny evaluated on an HP-UX system when both files exist?

- A. only cron.allow; cron.deny is ignored
- B. first cron.allow then cron.deny
- C. only cron.deny; cron.allow is ignored
- D. first cron.deny then cron.allow

Answer: A

QUESTION 18

Which command compares the current state of the system to a saved Bastille baseline?

- A. bastille_drift
- B. bastille_compare
- C. bastille_verify
- D. bastille_diff

Answer: A

QUESTION 19

Which HW components are always found in an HP Integrity processor-based system? (Select three.)

- A. PCI I/O cards
- B. HP-PB I/O cards
- C. core I/O
- D. PA 8900 CPU
- E. cell boards
- F. Itanium2 CPU

Answer: A,C,F

QUESTION 20

Where are system startup/shutdown scripts located?

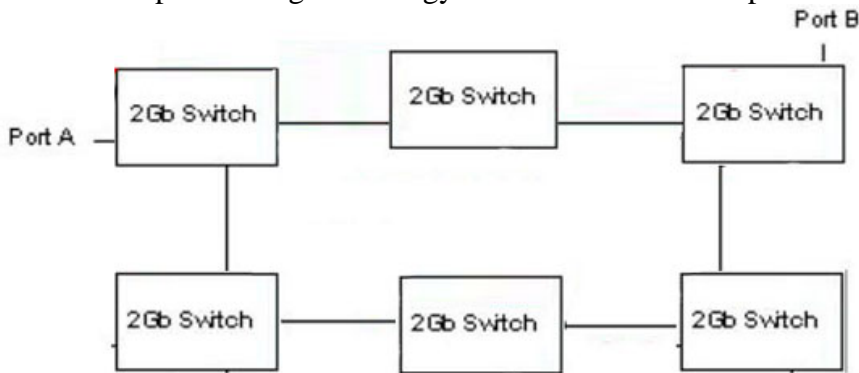
- A. /sbin/init.d
- B. /etc/rc.config.d
- C. /sbin/config.d
- D. /etc/rc2.d

Answer: A

QUESTION 21

DRAG DROP

Match each partitioning technology with the correct description.



Answer:

Actions, select from these

- Validate SAN operation
- Connect the storage system
- Install and interconnect switches
- Connect the Hosts
- Resources and time planning

Actions, place here

- Place first step here
- Place second step here
- Place third step here
- Place fourth step here
- Place fifth step here

QUESTION 22

Which commands query the DNS name server for IP related information? (Select two.)

- A. ipview
- B. iplist
- C. nslookup

D. dig

Answer: C,D

QUESTION 23

What is the length of an IPv4 address?

- A. 128 bits
- B. 32 bits
- C. 64 bits
- D. 48 bits

Answer: B

QUESTION 24

The /etc/resolv.conf file effects which service?

- A. NIS
- B. DHCP
- C. NTP
- D. DNS/BIND

Answer: D

QUESTION 25

Which technology does the Intel Itanium2 processor use?

- A. Explicitly Parallel Instruction Computing
- B. Complex Instruction Set Computing
- C. Super Scalar Reduced Instruction Computing
- D. Reduced Instruction Set Computing

Answer: A

QUESTION 26

To enable the DHCP client on boot, the DHCP_ENABLE variable is set to '1' in which file?

- A. /etc/rc.config.d/dhcp.conf
- B. /etc/rc.config.d/netconf
- C. /etc/nsswitch.conf
- D. /etc/hosts

Answer: B

QUESTION 27

Which statement is true about a Virtual Private Network (VPN)?

- A. It allows for clear text transmission.
- B. It is only used behind a firewall.
- C. It is an encrypted stream over a public network.
- D. It is a very fast dedicated network.

Answer: C

QUESTION 28

Which file is used during network startup to identify the network interface name, IPv4 address, and subnet mask of your LAN card?

- A. nfsconf
- B. netconf
- C. swconfig
- D. auditing

Answer: B

QUESTION 29

Which statement describes the configuration of HP System Insight Manager (HP SIM) users and authorizations?

- A. User accounts and authorizations in HP SIM are independent of operating system accounts.
- B. HP SIM authorizations are derived from the operating system login account permissions.
- C. HP SIM authorizations are configured in Select Access.
- D. User accounts must exist on the HP SIM central management server and authorizations are configured within HP SIM.

Answer: D

QUESTION 30

DRAG DROP

Arrange the steps in sequence to create a file system.

Actions, select from these

Actions, place here

Resources and time planning

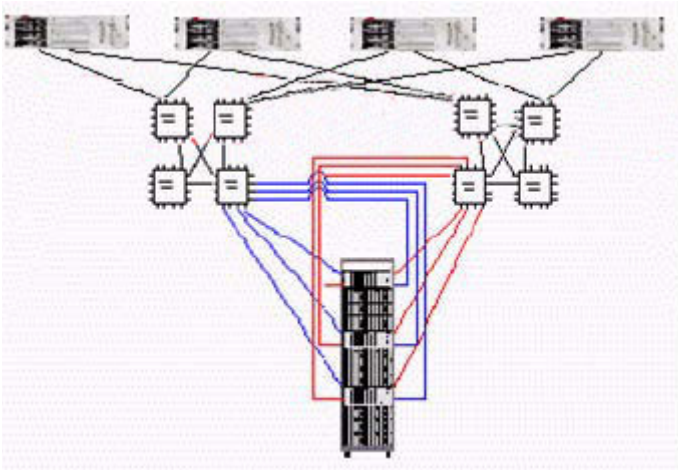
Install and interconnect switches

Connect the storage system

Connect the Hosts

Validate SAN operation

Answer:



QUESTION 31

What is the result when a user enters the telnet command without arguments?

- A. The system connects to the last known system address.
- B. An error is returned.
- C. Telnet enters command mode.
- D. The system connects to its loopback address.

Answer: C

QUESTION 32

How do you change a volume group name without reloading the data?

- A. It is not possible.
- B. vgexport, mkdir, mknod, vgimport
- C. vgchange
- D. vgremove, mkdir, mknod, vgcreate

Answer: B

QUESTION 33

Which vPar feature is available on HP-UX 11i v3?

- A. shared I/O
- B. CPU granularity
- C. dynamic migration of memory
- D. dynamic migration of I/O

Answer: C

QUESTION 34

Which are structures inside a journal file system? (Select two.)

- A. cylinder group
- B. intent log
- C. fragment
- D. mcells
- E. inode table

Answer: B,E

QUESTION 35

Which NFS server file contains a list of clients that currently have the server's NFS file systems mounted?

- A. /etc/mnttab
- B. /etc/nfstab
- C. /etc/exports
- D. /etc/fstab
- E. /etc/rmtab

Answer: E

QUESTION 36

Which command determines which device files are configured for boot, root, swap and dump?

- A. lifls -v vg00
- B. vgdisplay -v vg00
- C. lvdisplay -v /dev/vgroot
- D. lvlnboot -v vg00

Answer: D

QUESTION 37

Which commands can confirm host name resolution (DNS/Bind) is working correctly?

- A. whois
- B. nsquery
- C. hostname
- D. gethostbyname
- E. uname

Answer: B

QUESTION 38

The anonymous user (nobody) is pre-configured on HP-UX to have which user ID?

- A. -65534
- B. -2
- C. 65534
- D. 2
- E. 0

Answer: B

QUESTION 39

Which statements are true for a LVM logical volume? (Select two.)

- A. You can have one logical volume per volume group.
- B. It is not a file system.
- C. It may contain a file system.
- D. A logical volume contains one or more volume groups.

Answer: B,C

QUESTION 40

Which command does root use to send an instant message to all users?

- A. write
- B. talk
- C. send
- D. wall

Answer: D

QUESTION 41

Which command displays active shared memory segments?

- A. ipcs
- B. mstat
- C. vmstat

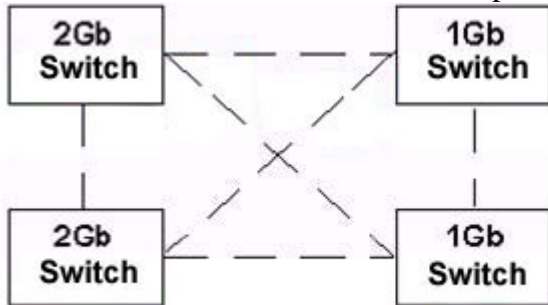
D. strings /dev/kmem

Answer: A

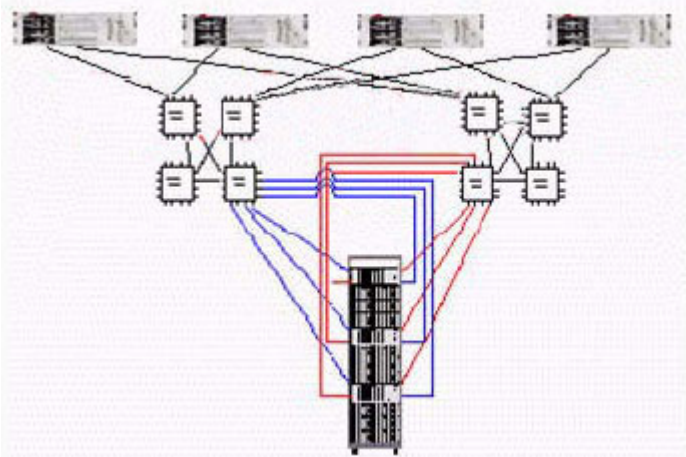
QUESTION 42

DRAG DROP

Match the commands with the functions performed.



Answer:



QUESTION 43

DRAG DROP

Build the command line to create the volume group control file of vg01. Panels can be used multiple times or not used.

Command Line

place here	place here	place here	place here	place here
------------	------------	------------	------------	------------

Source Panels

mksf	/dev/vg01/group	/dev/dsk/c0t4d0
c	0x040001	mknod
0x010000	64	68

Answer:

Command Line				
#	mknod	/dev/vg01/group	c	64
0x010000				

Source Panels		
mksf		/dev/dsk/c0t4d0
	0x040001	
		68

QUESTION 44

Which file transfer protocols are used by an Ignite server? (Select two.)

- A. scp
- B. tftp
- C. rcp
- D. nfs
- E. CIFS

Answer: B,D

QUESTION 45

If the console output displays a FAIL message of a service or application during system startup, which file can provide additional information on the symptoms?

- A. /etc/salog
- B. /etc/rc.log
- C. /var/adm/sw/swagent.log
- D. /etc/messages.log

Answer: B

QUESTION 46

Which benefit does PV-Links provide?

- A. multiple physical disks combined into a volume group
- B. multiple paths to the same LAN card
- C. symbolic link to the same physical device
- D. multiple paths to the same physical disk

Answer: D

QUESTION 47

The HP-UX System Management Homepage is started using which URL?

- A. http://hostname

- B. http://hostname:80
- C. http://hostname:2301
- D. http://hostname/hpsmh

Answer: C

QUESTION 48

What can an administrator do to optimize an existing JFS filesystem?

- A. increase the number of logical volumes
- B. change mount options
- C. change syslog.log size
- D. increase SWAP size

Answer: B

QUESTION 49

Which feature is new to 11i v3 and is only available on Integrity servers?

- A. single CPU per socket
- B. NUMA
- C. concurrent dumps
- D. ccNUMA

Answer: C

QUESTION 50

Which file systems are included with the HP-UX Foundation Operating Environment (OE)?

- A. Online JFS and memfs
- B. Base JFS and ext3
- C. HFS and Base JFS
- D. HFS and Online JFS
- E. HFS and VxVM

Answer: C

QUESTION 51

What is the purpose of the extendfs command?

- A. shares a logical volume with another system
- B. increases the size of active swap
- C. extends a logical volume across volume groups
- D. extends a file system within a logical volume
- E. increases the size of a logical volume

Answer: D

QUESTION 52

Which file configures PAM (Pluggable Authentication Module)?

- A. /etc/pam.conf
- B. /etc/rc.config.d/pam
- C. /opt/PAM/pam.conf
- D. /sbin/init.d/pam

Answer: A

QUESTION 53

Information about the currently installed software for the local system is stored in which location?

- A. /var/adm/sw/products
- B. /var/adm/sw/filesets
- C. /var/adm/sw/depot
- D. /var/adm/sw/swinstall.log

Answer: A

QUESTION 54

Which program invokes Internet server processes as needed?

- A. svrconfig
- B. swconfig
- C. inetd
- D. ifconfig

Answer: C

QUESTION 55

Which commands should be used to monitor disk I/O statistics? (Select two.)

- A. iostat
- B. linkloop
- C. top
- D. netstat
- E. sar

Answer: A,E

QUESTION 56

What is the default umask value for a non-root user?

- A. 022
- B. 200
- C. 440
- D. 644

Answer: A

QUESTION 57

Which command identifies known security vulnerabilities on the system?

- A. swa ident
- B. swa report
- C. swa scan
- D. swa sec_chk

Answer: B

QUESTION 58

What does the command touch myfile do if myfile exists?

- A. sets the file size to zero
- B. updates the date/time stamp
- C. gives an error
- D. nothing

Answer: B

QUESTION 59

Which command can be used to show all physical volumes in a volume group?

- A. pvdisplay
- B. lvdisplay
- C. vgdisplay
- D. lvmdisplay

Answer: C

QUESTION 60

What does the file /var/adm/inetd.sec do?

- A. provides an extra layer of security for HP-UX systems
- B. stores internet security services history
- C. specifies extra security for anonymous ftp users

D. controls access to kernel subsystems

Answer: A

QUESTION 61

Exhibit:

```
Change to configuration "nextboot"
at 15:02:06 MET on 13 March 2004 by daemon:
Module "MouseMUX" version [3F340BA2] changed from unused to static (depend).
Module "UsbBootMouse" version [3F340BA2] changed from unused to static (explicit).
=====

Change to configuration "nextboot"
at 15:03:17 MET on 13 March 2004 by daemon:
Module "UsbOhci" version [3F340BA2] changed from unused to static (explicit).
Module "libusbohci" version [3F340BA2] changed from unused to static (depend).
=====

Change to configuration "current"
at 15:17:47 MET on 13 March 2004 by root:
Module "ipf" version 0.1.0 changed from loaded (explicit) to unused (explicit).
=====
```

What does the expression by daemon mean in the /var/adm/kc.log?

- A. kernel module was changed via the web interface (SMH/kcweb)
- B. kernel module was changed by any user with GID root
- C. kernel module was changed on command line
- D. kernel module was changed via SAM

Answer: A

QUESTION 62

What is a benefit of Secure Shell?

- A. authentication through hidden identity
- B. prevents denial of service attacks
- C. privacy of data through strong encryption
- D. increase security of POSIX shell

Answer: C

QUESTION 63

Which I/O bus technology is supported on Integrity based systems?

- A. EISA
- B. PCI
- C. EIDE
- D. HSC

Answer: B

QUESTION 64

HP-UX typically has multiple file systems configured. What is an advantage of implementing multiple file systems on a single HP-UX system?

- A. enables the creation of very large files
- B. helps to avoid excessive file fragmentation
- C. required for a demand paging system
- D. allows each file system to be tuned separately

Answer: D

QUESTION 65

Which command makes additional crontab entries?

- A. /usr/sbin/cron -e
- B. crontab -e
- C. cron -a
- D. vi /etc/crontab

Answer: B

QUESTION 66

What are benefits of Encrypted Volume and File System? (Select two.)

- A. encrypts any mounted filesystem
- B. protects data at rest
- C. protects data in use
- D. provides additional file system access control
- E. works with any supported volume manager

Answer: B,E

QUESTION 67

Which file contains the modified configuration values that will be used the next time the cimserver starts?

- A. cimserver.conf
- B. cimserver_planned.conf
- C. cimserver_nextboot.conf
- D. cimserver_start.conf

Answer: B

QUESTION 68

What is the smallest component that you can install with swinstall?

- A. product
- B. fileset
- C. file
- D. sub-product

Answer: B

QUESTION 69

How is the priority of a child process assigned?

- A. inherited from the parent process
- B. assigned the next highest available priority
- C. assigned randomly
- D. assigned the next lowest available priority

Answer: A

QUESTION 70

Which HP Role-Based Access Control (RBAC) command allows a user to execute a program under a different user id?

- A. exec
- B. runas
- C. privrun
- D. sudo

Answer: C

QUESTION 71

Which command is used to pvcreate a disk that has been previously used in LVM?

- A. pvcreate -f /dev/rdisk/c1t2d0
- B. pvcreate -F /dev/dsk/c1t2d0
- C. pvcreate -B /dev/rdisk/c1t2d0
- D. pvcreate -f /dev/dsk/c1t2d0

Answer: A

QUESTION 72

Which pair of statements is true when launching a tool using HP System Insight Manager (HP SIM)?

- A. - authorizations are configured in HP SIM
- users are authenticated using HP SIM's internal user database
- B. - authorizations are configured in Select Access
- users are authenticated using HP SIM's internal user database

- C. - authorizations are configured in HP SIM
- users are authenticated using PAM on the HP SIM Server
- D. - authorizations are derived from operating system login account permissions
- users are authenticated using PAM on the HP SIM Server

Answer: C

QUESTION 73

Which HP-UX 11i v3 command allows SCSI device management and diagnoses?

- A. iofind
- B. ioinit
- C. scsimgr
- D. scsiutil

Answer: C

QUESTION 74

Which commands are used to list device file details? (Select two).

- A. lsdev
- B. ioscan -fn
- C. lsf -a
- D. lssf <special file>
- E. insf -e

Answer: B,D

QUESTION 75

What does a hard link between two files do?

- A. allows two users to own the same file
- B. allows multiple file names to reference the same data across two filesystems
- C. allows multiple file names to reference the same data in a filesystem
- D. ensures that two files get deleted together

Answer: C

QUESTION 76

Which LVM command allows dynamic size expansion of LUNs?

- A. vgextend
- B. vgchange
- C. vgmove
- D. vgmodify

Answer: D

QUESTION 77

What is the default umask value for a non-root user?

- A. 644
- B. 022
- C. 200
- D. 440

Answer: B

QUESTION 78

During a run-state change from run level 1 to run level 2 , which of these scripts would run last?

- A. /sbin/rc2.d/S430nfs.client
- B. /sbin/rc2.d/S620xfs
- C. /sbin/rc2.d/K900nfs.server
- D. /sbin/rc2.d/K200tps.rc
- E. /sbin/rc2.d/S500inetd

Answer: B

QUESTION 79

Which information is provided in the swlist output by default? (Select three.)

- A. description of the product/bundle
- B. version number
- C. product/bundle name
- D. directory where product/bundle is installed
- E. product/bundle size

Answer: A,B,C

QUESTION 80

Which command determines if a local user account has been locked?

- A. acctstat
- B. userdbstat
- C. passwd -l
- D. userstat

Answer: D

QUESTION 81

What is the smallest component that you can install with swinstall?

- A. fileset
- B. product
- C. sub-product
- D. file

Answer: A

QUESTION 82

Which command is used to verify remote host connectivity?

- A. inet
- B. portmap
- C. ping
- D. netstat

Answer: C

QUESTION 83

Which Directory Server products are available for HP-UX 11i v3? (Select two.)

- A. NIS Server
- B. SuSe Directory Server
- C. LDAP-UX Integration
- D. Red Hat Directory Server
- E. NIS+ Server

Answer: A,D

QUESTION 84

DRAG DROP

Match each backup/archive tool with its operation.

	Functions	Tools
<div>place here</div>	generate backup of root volume group on a bootable tape media	<div>ftbackup</div>
<div>place here</div>	do scheduled online backups of Oracle database	<div>dd</div>
<div>place here</div>	create a backup of a filesystem using complex file selection criteria	<div>make_tape_recovery</div>
<div>place here</div>	generate an archive on tape of some files in a directory	<div>cpio</div>
<div>place here</div>	create a byte by byte copy of a whole disk	<div>tar</div>
<div>place here</div>	create archive using find command to select files	<div>Data Protector</div>

Answer:

Functions	
tar	generate backup of root volume group on a bootable tape media
cpio	do scheduled online backups of Oracle database
dd	create a backup of a filesystem using complex file selection criteria
make_tape_recovery	generate an archive on tape of some files in a directory
Data Protector	create a byte by byte copy of a whole disk
fbbackup	create archive using find command to select files

QUESTION 85

Which command displays Internet to Ethernet address resolution?

- A. arp
- B. lanscan
- C. traceroute
- D. ifconfig

Answer: A

QUESTION 86

Which commands are recommended to clear the contents an active file called log-file?
(Select two.)

- A. cat /dev/null > log-file
- B. trim log-file
- C. freset log-file
- D. >log-file

Answer: A,D

QUESTION 87

Exhibit:

```
klausl :x:375:21:::/home/klausl:/usr/bin/ksh
michael:x:225:21:::/home/michael:/usr/bin/ksh
```

Why do you see an "x" for the users in the second field of the /etc/passwd file?

- A. shadow password is enabled.
- B. blank password is used.
- C. password is expired
- D. user is currently deactivated.

Answer: A

QUESTION 88

Which operator will start a process in the background?

- A. |&
- B. &&
- C. ||
- D. &
- E. ;

Answer: D

QUESTION 89

How do you search through all man pages for a command?

- A. man -k keyword
- B. man -c keyword
- C. man -v keyword
- D. man -s keyword

Answer: A

QUESTION 90

How do you remove a virtual partition?

- A. bring down all the vPar kernels made from the same nPar and reboot the kernel into the nPar
- B. execute vparstatus, then verify the vPar is down using vparremove -p <vParName>
- C. from the vPar monitor: MON>VPARREMOVE -p <vParName>
- D. from the MP: CM>VPARDELETE and select the name of the vPar from the list

Answer: B

QUESTION 91

Which file contains information about unsuccessful login attempts?

- A. /etc/wtmp
- B. /var/adm/btmps
- C. /var/adm/utmps
- D. /var/syslog/failed_logins

Answer: B

QUESTION 92

Which sftp command allows a user to copy the contents of an entire directory?

- A. get
- B. getall
- C. rcp
- D. mget
- E. mpull

Answer: D

QUESTION 93

Information about the last installation for the local system is stored in which location?

- A. /var/adm/sw/filesets
- B. /var/adm/sw/products
- C. /var/adm/sw/swinstall.log
- D. /var/adm/sw/depot

Answer: C

QUESTION 94

What is IP multiplexing on a UNIX host?

- A. increasing throughput on the network interface
- B. binding more than one IP address to a single network interface
- C. binding more than one MAC address to a single network interface
- D. binding the same IP address to multiple network interface

Answer: B

QUESTION 95

Which command ends an unresponsive process?

- A. kill -3 PID
- B. kill -s SIGSTOP PID
- C. kill -1 PID
- D. kill -s SIGKILL PID

Answer: D

QUESTION 96

Where is the default run-state found?

- A. /etc/rc3.d
- B. defined by the user at boot time

- C. /sbin/bcheckrc
- D. /etc/rc
- E. /etc/inittab

Answer: E

QUESTION 97

What are the major features of IPFilter on HP-UX 11i v3? (Select three.)

- A. supports Network Address Translation (NAT)
- B. provides a new GUI configuration tool
- C. supports X.25 Interfaces
- D. creates extensive logs
- E. installed and enabled by default

Answer: A,C,D

QUESTION 98

By default, where does the cpio command send its output?

- A. stdout
- B. cpio.out
- C. /tmp
- D. stderr

Answer: A

QUESTION 99

What is an "alias" IP address?

- A. a short form of the IP address used to simplify connections
- B. an additional IP address on a single NIC
- C. another (secondary) host using your host address
- D. a duplicate (identical) address configured on two separate NICs on the same system

Answer: B

QUESTION 100

If ioscan shows no device files for a claimed hardware path, which command can be used to recreate them?

- A. insf -e
- B. lssf
- C. reboot
- D. /sbin/iointrc

Answer: A

QUESTION 101

DRAG DROP

Match the process or daemon name with the correct definition.

Daemons	Definitions
cimservera	[place here]
cimserver	[place here]
cimserverd	[place here]

Definitions
It is responsible for executing the provider code in an Out-of-Process approach
Daemon responsible for automatically restarting the cimserver process in case of failure
Standalone process that provides the cimserver with PAM Authentication services
The CIM server itself
Daemon responsible for monitoring Indication providers

Answer:

Daemons	Definitions
cimservera	Standalone process that provides the cimserver with PAM Authentication services
cimserver	The CIM server itself
cimserverd	Daemon responsible for automatically restarting the cimserver process in case of failure

QUESTION 102

Which security tool can be used to detect an attack on HP-UX systems?

- A. Secure Shell (ssh)
- B. IPSec
- C. IPFilter
- D. NIS+
- E. Host IDS

Answer: E

QUESTION 103

Which feature is new to 11i v3 and is only available on Integrity servers?

- A. concurrent dumps
- B. ccNUMA
- C. NUMA
- D. single CPU per socket

Answer: A

QUESTION 104

Which are advantages of the Online JFS file system? (Select two.)

- A. supports online defragmentation
- B. allows more files per file system
- C. supports 128 bit encryption of system files
- D. supports dynamic online resizing of the file system
- E. supports larger disk drives

Answer: A,D

QUESTION 105

Which statements are true regarding the new 11i v3 Mass Storage Stack device special files (DSFs)? (Select three.)

- A. You can mix Legacy and Persistent DSFs.
- B. You can choose for the entire system to use only Persistent DSFs.
- C. Both Legacy and Persistent DSFs are created by default.
- D. You can choose for each LUN to use only Persistent DSFs.
- E. You can set a flag to have Legacy DSFs created for current and future storage devices.
- F. You must choose either Legacy or Persistent DSFs.

Answer: A,B,C

QUESTION 106

Which new features of HP-UX 11i v3 potentially increase the overall I/O performance compared to previous releases of HP-UX 11i? (Select two.)

- A. sx2000 chipset support
- B. Native Multi-Pathing
- C. Agile device addressing
- D. Unified File Cache (UFC)
- E. Persistent Device Special Files

Answer: B,D

QUESTION 107

Which file systems are included with the HP-UX Foundation Operating Environment

(OE)? (Select two.)

- A. Base JFS
- B. VxVM
- C. HFS
- D. Online JFS
- E. memfs
- F. ext3

Answer: A,C

QUESTION 108

Which command displays the IP address to hardware address translation table?

- A. linkloop
- B. arp
- C. netstat
- D. lanscan
- E. nslookup

Answer: B

QUESTION 109

Which areas can be locations of system bottlenecks? (Select three.)

- A. hard partition size
- B. graphical interface
- C. VPMON
- D. memory
- E. CPU
- F. disk
- G. size of filesystems

Answer: D,E,F

QUESTION 110

Which Pluggable Authentication Module (PAM) restricts login access for a set of users?

- A. pam_authz
- B. pam_validate
- C. pam_hpux
- D. pam_unix
- E. pam_access

Answer: A

QUESTION 111

Which configuration file determines the synchronization sources and operating modes of NTP?

- A. /etc/xntpd
- B. /etc/ntp.conf
- C. /etc/rc.config.d/ntpconf
- D. /etc/rc.config.d/netdaemons

Answer: B

QUESTION 112

You need information about linking files but don't know the specific command to use. Which command points you to the right command?

- A. apropos link
- B. man -c link
- C. which link
- D. man -k link

Answer: D

QUESTION 113

How do you determine which patches are currently installed on the system?

- A. swlist -l patch
- B. swlist -l depot | grep -i ph
- C. swlist -l product | grep -i patch
- D. check_patches

Answer: A

QUESTION 114

What is the length of an IPv6 address?

- A. 32 bits
- B. 64 bits
- C. 128 bits
- D. 48 bits

Answer: C

QUESTION 115

Which variable holds the result status of an executed command?

- A. \$!

- B. \$error
- C. \$?
- D. \$#

Answer: C

QUESTION 116

What is the function of the HP CIFS Server?

- A. to mount Windows CIFS-formatted disks on an HP-UX system
- B. to share HP-UX CIFS-formatted disks with Windows clients
- C. to mount Windows file systems on an HP-UX system
- D. to share HP-UX file systems with Windows clients

Answer: D

QUESTION 117

Identify the guidelines for selecting device swap areas. (Select two.)

- A. one swap area per disk
- B. consider speed of the disks
- C. dissimilar size of the disks
- D. 1st swap should have priority 1
- E. minimum two swap areas per disk

Answer: A,B

QUESTION 118

You want to create a mirror of a logical volume using two controllers. Which configuration file is used to accomplish this?

- A. /etc/dualcontroller
- B. /etc/lvmrc
- C. /etc/lvmtab
- D. /etc/lvmimg

Answer: D

QUESTION 119

DRAG DROP

Match each command with the corresponding description

HP0-841

	Descriptions	Commands
place here	determine operating system version	machinfo
place here	command for online replacing of PCI I/O cards	ioscan
place here	scan I/O system of a HW partition	dmesg
place here	collect system diagnostic messages from system buffer	uname -a
place here	print detailed machine information	lanscan
place here	create special device files for I/O components	olrad
place here	display LAN device configuration and status	insf -e

Answer:

	Descriptions
lanscan	determine operating system version
uname -a	command for online replacing of PCI I/O cards
ioscan	scan I/O system of a HW partition
dmesg	collect system diagnostic messages from system buffer
olrad	print detailed machine information
insf -e	create special device files for I/O components
machinfo	display LAN device configuration and status

QUESTION 120

Which command compares the current state of the system to a saved Bastille baseline?

- A. bastille_drift
- B. bastille_verify
- C. bastille_diff
- D. bastille_compare

Answer: A

QUESTION 121

What is a benefit of using Ignite-UX?

- A. updates all applications to their current versions
- B. searches the internet for updates to all applications listed in the /etc/update file
- C. reduces the cost of software distribution
- D. automatically installs all current OS patches from www.hp.com/HP-UX/patches

Answer: C

QUESTION 122

Which security features are available on 11i v2 and not available on 11i v1? (Select three.)

- A. IPSec
- B. Encrypted Volume and File System
- C. Security Containment
- D. LDAP-UX
- E. Bastille
- F. Install-time Security

Answer: B,C,F

QUESTION 123

You are installing an rx7640 with two internal disks and Mirror/Disk UX. Which RAID level provides data protection for this environment?

- A. RAID 1
- B. RAID 1+0
- C. RAID 0
- D. RAID 3
- E. RAID 5

Answer: A

QUESTION 124

What is the purpose of the lvextend command?

- A. shares a logical volume with another system
- B. extends a logical volume across volume groups
- C. extends a file system within a logical volume
- D. increases the size of a logical volume
- E. increases the size of active swap

Answer: D

QUESTION 125

Which default system setting is located in /etc/default directory?

- A. default password for new users
- B. default system time
- C. default file system type
- D. default disk space usage limits

Answer: C

QUESTION 126

Which tools have been deprecated with the introduction of the nwmgr command? (Select three.)

- A. lanadmin
- B. linkloop
- C. ifconfig
- D. lanscan
- E. netstat

Answer: A,B,D

QUESTION 127

Identify on the password field in the /etc/passwd file that is displayed in the graphic. Click on the password field of user3.

```
root:qmAj8as.,8a3e:0:3:::/bin/sh
daemon*:1:5:::/sbin/sh
user1:Adok60AazRgXU:1001:1001:111-1111:/home/user1:/usr/bin/sh
user2:Adok60AazRgXU:1002:1001:222-2222:/home/user2:/usr/bin/sh
user3:AdOK60AazRgXU:1003:1001:333-3333:/home/user3:/usr/bin/sh
```

Answer:

```
root:qmAj8as.,8a3e:0:3:::/bin/sh
daemon*:1:5:::/sbin/sh
user1:AdOK60AazRgXU:1001:1001:111-1111:/home/user1:/usr/bin/sh
user2:AdOK60AazRgXU:1002:1001:222-2222:/home/user2:/usr/bin/sh
user3:AdOK60AazRgXU:1003:1001:333-3333:/home/user3:/usr/bin/sh
```

QUESTION 128

What are the new features of BIND 9.3.2? (Select three.)

- A. integration with IPFilter
- B. support for new DNSSEC features
- C. new method of listing master servers
- D. storing of IPv6 addresses
- E. configure the ordering of records in a multi-record response

Answer: B,C,E

QUESTION 129

What are benefits of the HP-UX 11i v3 parallel probing of HBAs, targets, and LUNs? (Select two.)

- A. improved boot time

- B. improved I/O scan time
- C. improved availability
- D. improved virtualization
- E. improved I/O performance

Answer: A,B

QUESTION 130

A customer wants to migrate to HP-UX 11i v3. The customer has several HP 9000 and Integrity systems to test on. Which options or systems will support HP-UX 11i v3? (Select two.)

- A. BL60p currently running HP-UX 11i v2
- B. rp3410 currently running HP-UX 11i v2
- C. vPar (version A.03.x) on HP 9000 Superdome running HP-UX 11i v1
- D. L3000 currently running HP-UX 11i v2

Answer: A,B

QUESTION 131

Which file configures whether AutoFS is enabled or disabled on an HP-UX system?

- A. /etc/nfsconf
- B. /etc/netconf
- C. /etc/automount.conf
- D. /etc/rc.config.d/nfsconf

Answer: D

QUESTION 132

What is the function of the HP CIFS Client?

- A. to mount Windows CIFS-formatted disks on an HP-UX system
- B. to share HP-UX file systems with Windows clients
- C. to share HP-UX CIFS formatted disks with Windows clients
- D. to mount Windows file systems on an HP-UX system

Answer: D

QUESTION 133

Which new features of HP-UX 11i v3 potentially increase the overall I/O performance compared to previous releases of HP-UX 11i? (Select two.)

- A. Agile device addressing
- B. Unified File Cache (UFC)
- C. Native Multi-Pathing

- D. Persistent Device Special Files
- E. sx2000 chipset support

Answer: B,C

QUESTION 134

Which file needs to be configured to automatically check and mount file systems?

- A. /etc/sstab
- B. /etc/fstab
- C. /etc/mnttab
- D. /var/adm/fstab

Answer: B

QUESTION 135

Which users are included in the /etc/ftpd/ftpusers file?

- A. those allowed ftp access
- B. those allowed ftp access without a password
- C. those not allowed ftp access
- D. those allowed anonymous ftp access

Answer: C

QUESTION 136

Which command compares the current state of the system to a saved Bastille baseline?

- A. bastille_verify
- B. bastille_drift
- C. bastille_compare
- D. bastille_diff

Answer: B

QUESTION 137

On HP-UX 11iv3, what is the default maximum protocol version of the NFS server and client?

- A. 4
- B. 3
- C. 1
- D. 2

Answer: B

QUESTION 138

Which command can be used to verify a network interface card (NIC) is enabled?

- A. arp
- B. nslookup
- C. ping
- D. lanscan

Answer: D

QUESTION 139

What does the linkloop command test?

- A. Maximum Transmission Unit (MTU) size
- B. MAC address connectivity between network cards
- C. loopback address connectivity between network cards
- D. router activity

Answer: B

QUESTION 140

Which HP service and support tool is offered free-of-charge and provides proactive event notification to HP in case of failure of HP-UX servers?

- A. Event Monitoring Service
- B. Support Tools Manager
- C. HP Online Diagnostics Environment
- D. Instant Support Enterprise Edition
- E. HP Offline Diagnostics Environment

Answer: D

QUESTION 141

Which statements are true about 11i v3 support of multi-pathing? (Select two.)

- A. Native Multi-Pathing is bundled with the Enterprise and Mission Critical Operating Environments.
- B. Native Multi-Pathing is bundled with all the HP-UX Operating Environments.
- C. Native Multi-Pathing works with only Persistent Device Special Files (DSFs).
- D. Native Multi-Pathing works with both Legacy and Persistent Device Special Files (DSFs).
- E. Native Multi-Pathing is bundled with all of the HP-UX Operating Environments except the Technical Compute OE.

Answer: B,D

QUESTION 142

Which tools have been deprecated with the introduction of the nwmgr command? (Select three.)

- A. netstat
- B. linkloop
- C. lanadmin
- D. ifconfig
- E. lanscan

Answer: B,C,E

QUESTION 143

What is PAM (Pluggable Authentication Module) used for?

- A. to indicate which service can run in a nonsecure mode
- B. to tell each service which authentication module to use
- C. to enable the ftp service with pluggable module encryption
- D. to encrypt and authenticate IP packets at the network layer

Answer: B

QUESTION 144

What are the new features offered in NFS version 4? (Select three.)

- A. integrated file locking support
- B. asynchronous write support
- C. support for the UDP network transport
- D. integrated security
- E. simplified firewall configuration

Answer: A,D,E

QUESTION 145

Using the Online JFS product, which command sequence extends a mounted JFS file system?

- A. lvextend, extendfs
- B. umount, lvextend, fsadm
- C. umount, lvextend, extendfs
- D. lvextend, fsadm

Answer: D

QUESTION 146

Which files control the HP System Management Homepage (SMH) configuration?

(Select two.)

- A. /opt/smh/conf/envvars
- B. /opt/hpsmh/hpsmh.conf
- C. /opt/hpsmh/conf/timeout.conf
- D. /opt/hpsmh/sbin/envvars
- E. /opt/smh/conf/timeout.conf
- F. /opt/smh/smh.conf

Answer: C,D

QUESTION 147

What does the command touch myfile do if myfile exists?

- A. sets the file size to zero
- B. gives an error
- C. nothing
- D. updates the date/time stamp

Answer: D

QUESTION 148

What are key features of HP Systems Insight Manager (HP SIM)? (Select four.)

- A. role-based access control
- B. automatic event handling
- C. inventory reports
- D. network maps
- E. application management
- F. historical performance reports
- G. secure command fan-out to multiple systems

Answer: A,B,C,G

QUESTION 149

Identify the User ID field in the /etc/passwd file shown in the graphic.

```
root:qmAj8as.,8a3e:0:3:/:/bin/sh
daemon*:1:5:/:/sbin/sh
user1:AdOK60AazRgXU:1001:1001:111-1111:/home/user1:/usr/bin/sh
user2:AdOK60AazRgXU:1002:1001:222-2222:/home/user2:/usr/bin/sh
user3:AdOK60AazRgXU:1003:1001:333-3333:/home/user3:/usr/bin/sh
```

Answer:

QUESTION 150

What does the expression by root mean in the /var/adm/kc.log?
Exhibit:


```
Change to configuration "nextboot"
at 15:02:06 MET on 13 March 2004 by daemon:
Module "MouseMUX" version [3F340BA2] changed from unused to static (depend).
Module "UsbBootMouse" version [3F340BA2] changed from unused to static (explicit).

=====

Change to configuration "nextboot"
at 15:03:17 MET on 13 March 2004 by daemon:
Module "UsbOhci" version [3F340BA2] changed from unused to static (explicit).
Module "libusbohci" version [3F340BA2] changed from unused to static (depend).

=====

Change to configuration "current"
at 15:17:47 MET on 13 March 2004 by root:
Module "ipf" version 0.1.0 changed from loaded (explicit) to unused (explicit).

=====
```

- A. The kernel module was changed by any user with GID root.
- B. The kernel module was changed on command line.
- C. The kernel module was changed via web interface (SMH/kcweb).
- D. The kernel module was changed via SAM.

Answer: B

QUESTION 151

The following message is displayed while attempting to unmount the /opt filesystem.
Which command is used to determine which user is causing the file system to be busy?

```
# umount /opt
```

```
umount: cannot unmount /opt : Device busy
```

- A. who /opt
- B. bdf /opt
- C. fuser -cu /opt
- D. showmount /opt

Answer: C

QUESTION 152

Which protocols are supported by the HP CIFS Server to authenticate users? (Select two.)

- A. NTLM
- B. SSH
- C. Public/Private Key
- D. Kerberos
- E. EAP

Answer: A,D

QUESTION 153

DRAG DROP

Match the Install-Time Security bundles with their effects on system behavior.

Bundle Names	Effects on System Behavior
(place here)	Full lockdown
(place here)	Install security infrastructure only
(place here)	Host-based lockdown
(place here)	Lockdown; ICMP packets accepted by HP SIM CMS

Sec00Tools	Sec10Host	Sec20MngDMZ	Sec30DMZ
------------	-----------	-------------	----------

Answer:

Bundle Names	Effects on System Behavior
Sec30DMZ	Full lockdown
Sec00Tools	Install security infrastructure only
Sec10Host	Host-based lockdown
Sec20MngDMZ	Lockdown; ICMP packets accepted by HP SIM CMS

QUESTION 154

Which file contains the information sent in response to a bootp request?

- A. /etc/inetd.conf
- B. /etc/bootp.conf
- C. /etc/bootptab
- D. /etc/services

Answer: C

QUESTION 155

You have expanded an existing LUN in your EVA storage. The LUN belongs to an HP-UX 11i v3 LVM volume group (VG). You want to expand the volume group to reflect the new LUN size. What is the most efficient way to accomplish this?

- A. Backup, remove, create and restore the data to reflect the new size.
- B. Use the vgmodify command to change the physical volume attributes.
- C. Create another physical volume and extend your current VG.
- D. You cannot expand a physical volume when using LVM.

Answer: B

QUESTION 156

Which command does root use to send an instant message to all users?

- A. talk
- B. send
- C. write
- D. wall

Answer: D

QUESTION 157

Which configuration file determines the mail relay behavior of the sendmail daemon?

- A. /etc/rc.config.d/netdaemons
- B. /etc/sendmail.relay
- C. /etc/mail/relay.conf
- D. /etc/mail/sendmail.cf

Answer: D

QUESTION 158

Which file system component contains information describing file attributes?

- A. intent log
- B. journal cache
- C. inode
- D. superblock

Answer: C

QUESTION 159

DRAG DROP

Arrange the steps in the correct order to bring a running Integrity system into single user mode.

Steps in Sequence	Steps
place step 1 here	HPUX> boot vmunix -is
place step 2 here	ISL> hpux -is
place step 3 here	interrupt autoboot sequence
	reboot -is
	shutdown -h
	shutdown -ry 0

Answer:

Steps in Sequence	Steps
interrupt autoboot sequence	
shutdown -h	ISL> hpux -is
HPUX> boot vmunix -is	
	reboot -is
	shutdown -ry 0

QUESTION 160

Which environmental variable allows you to override the default directories searched for man pages?

- A. MANPAGE
- B. MANPATH
- C. PATHVI
- D. PATH

Answer: B

QUESTION 161

What does find / -name datafile return?

- A. relative path of files called datafile from your current directory down
- B. path names of all files called datafile
- C. relative path names of all files called datafile in your current directory
- D. number of files called datafile in your current directory

Answer: B

QUESTION 162

What can be determined using the which or whence command?

- A. current version and release of an executable
- B. pseudo terminal your session is currently logged on
- C. absolute path for an executable
- D. compiler options used to create an executable

Answer: C

QUESTION 163

The set_parms command is an interactive system set-up command that allows you to specify which various parameters? (Select two.)

- A. timezone
- B. IP address
- C. security parameters
- D. sendmail

Answer: A,B

QUESTION 164

How do you add 16GB of memory to a vPar?

- A. from the HP-UX command line: execute vparstatus to determine the vPar is down, then execute vparmodify -p <vParName> -a mem::16348
- B. from the MP: CM>VPARMOD,select the vPar name from the list, then select Add Memory and type 16G
- C. from the vPar monitor: MON> vparmodify -p # -a mem:16Gb
- D. from the HP-UX command line: execute vparremove -p <vParName> and recreate the vPar with the desired amount of memory

Answer: A

QUESTION 165

Which network transport protocol is supported by NFS version 4?

- A. rtp
- B. tcp
- C. udp
- D. ntp

Answer: B

QUESTION 166

How do you search through all man pages for a command?

- A. man -c keyword
- B. man -k keyword
- C. man -s keyword
- D. man -v keyword

Answer: B

QUESTION 167

What can be determined using the file command?

- A. type of file selected
- B. compiler options used to create an executable
- C. pseudo terminal your session is currently logged on
- D. absolute path for an executable

Answer: A

QUESTION 168

Which command scans for system hardware, interface cards, and usable I/O system devices?

- A. scansys
- B. lanscan
- C. sysview
- D. ioscan

Answer: D

QUESTION 169

How do you determine which patches are currently installed on the system?

- A. swlist -l depot | grep -i ph
- B. swlist -l product | grep -i patch
- C. swlist -l product | grep -i ph
- D. check_patches

Answer: C

QUESTION 170

Which HP-UX 11i v3 command allows SCSI device management and diagnoses?

- A. scsimgr
- B. ioinit
- C. iofind
- D. scsiutil

Answer: A

QUESTION 171

What is a use of the intent log in a journaled file system?

- A. log user data prior to a physical write
- B. log meta data changes
- C. track mirror transactions
- D. improve buffer cache performance

E. provide an audit trail log

Answer: B

QUESTION 172

Which command does root use to send an instant message to all users?

- A. talk
- B. send
- C. write
- D. wall

Answer: D

QUESTION 173

Which command can you use to terminate a process?

- A. terminate
- B. signal
- C. kill
- D. stop
- E. abort

Answer: C

QUESTION 174

Which main file contains the LVM configuration information?

- A. lvminfo
- B. lvmconf
- C. lvmpvg
- D. lvmrc
- E. lvmtab

Answer: E

QUESTION 175

Which I/O bus technology is supported on Integrity based systems?

- A. EISA
- B. EIDE
- C. PCI
- D. HSC

Answer: C

QUESTION 176

If the HP System Management Homepage daemon is not running, which command will start it?

- A. hpsmh start
- B. smh startup
- C. smh start
- D. hpsmh autostart

Answer: D

QUESTION 177

Which symbol is used to append error messages to a file in the POSIX shell?

- A. 2>>
- B. >>2
- C. 2<<
- D. 2>

Answer: A

QUESTION 178

Which configuration file determines the synchronization sources and operating modes of NTP?

- A. /etc/rc.config.d/ntpconf
- B. /etc/ntp.conf
- C. /etc/xntpd
- D. /etc/rc.config.d/netdaemons

Answer: B

QUESTION 179

In which order are cron.allow and cron.deny evaluated on an HP-UX System when both files exist?

- A. First cron.allow then cron.deny
- B. First cron.deny then cron.allow
- C. Only cron.allow, cron.deny is ignored
- D. Only cron.deny, cron.allow is ignored

Answer: C

QUESTION 180

Where is the default run-state found?

- A. /etc/rc
- B. /etc/rc3.d
- C. /etc/inittab
- D. /sib/bcheckrc
- E. defined by the user at boot time

Answer:

QUESTION 181

What can be determined using the file command?

- A. Type of file selected
- B. Absolute path for an executable
- C. Compiler options used to create an executable
- D. Pseudo terminal your session is currently logged on

Answer: A

QUESTION 182

Which technology does the Intel Itanium2 processor use?

- A. Complex Instruction Set Computing
- B. Reduced Instruction set computing
- C. Explicity Parallel Instruction Computing
- D. Super Scalar Reduced Instruction Computing

Answer: C

QUESTION 183

What is an "alias" IP Address?

- A. A Second unique IP Address on a single NIC
- B. Another (Secondary) host using your host address
- C. A short form of the IP address used to simplify connections
- D. A duplicate (identical) address configured on two separate NICs on the same system

Answer: A

QUESTION 184

Given that file1 and file2 do not exists in dest_dir, what is the result of the following command?

`ln -f file1 file2 dest_dir`

- A. An Error Message
- B. File1 will be created in the dest_dir and linked to file2
- C. File2 will be created in the dest_dir and linked to file1

D. File1 and file2 are created in dest_dir and they are linked back to the original files file1 and file2

Answer: D

QUESTION 185

What do physical volume links provide?

- A. Access to a spare disk
- B. Automatic load balancing
- C. An alternate path to a disk
- D. Improved RAID performance

Answer: C

QUESTION 186

Which file system are included with the HP-UX operating system? (Choose two.)

- A. Ext3
- B. HFS
- C. VXVM
- D. Memfs
- E. Base JFS
- F. Online JFS

Answer: B,E

QUESTION 187

Which methods can be used to install HP-UX from an ignite server? (Choose two.)

- A. Start an swinstall session, then enter the ignite server IP Address
- B. Interrupt the boot process and boot from LAN, then enter the ignite server IP Address
- C. Interrupt the boot process, select "Boot from ignite server", then enter the ignite server IP Address
- D. Boot from application CD, select "Install from ignite server" and enter the ignite server IP Address
- E. Boot from installation media, select "Install from ignite server" and enter the ignite server IP Address

Answer: B,E

QUESTION 188

There are a numerous reasons a user may report. "The network is down". If you want to be sure a network interface card is enabled, which command would you use?

- A. arp

- B. ping
- C. lanscan
- D. nslookup

Answer: C

QUESTION 189

What is PAM (Pluggable Authentication Module) used for?

- A. To enable the ftp service with encryption
- B. To tell each service which authentication module to use
- C. To indicate which service can run in a nonsecure mode
- D. To encrypt and authentication IP packets at the network layer

Answer: B

QUESTION 190

Which file system component contains information describing file attributes?

- A. inode
- B. intent log
- C. superblock
- D. journal cache

Answer: A

QUESTION 191

What is a journaled file system intent log used for?

- A. Provide an audit trail
- B. Log meta data changes
- C. Track mirror transactions
- D. Improve buffer cache performance
- E. Store user data prior to a physical write

Answer: B

QUESTION 192

Which users are included in the /etc/ftpd/ftpusers file?

- A. Those allowed ftp access
- B. Those not allowed ftp access
- C. Those allowed anonymous ftp access
- D. Those allowed ftp access without a password

Answer: B

QUESTION 193

Which are considered common single points of failure (SPOF)? (Choose three.)

- A. Human Error
- B. Loss of Power
- C. IT Processes
- D. Technical Support
- E. Application Failure
- F. Mean Time Between Failures (MTBF)

Answer: A,B,E

QUESTION 194

When is the file /etc/default/tz used?

- A. When the environment variable TZ is not set
- B. During set_parms procedure for installation date
- C. As the default file for timezone configuration (/etc/tz)
- D. As the master file if the original is removed or deleted

Answer: A

QUESTION 195

Which FTP command allows a user to copy the contents of an entire directory?

- A. get
- B. rcp
- C. mget
- D. getall
- E. mpull

Answer: C

QUESTION 196

The set_parms command is an interactive system set-up command that allows you to specify which various parameters? (Choose two.)

- A. sendmail
- B. timezone
- C. IP address
- D. Security Parameters

Answer: B,C

QUESTION 197

Which protocol references the /etc/hosts.equiv and ~/.rhosts files?

- A. ftp
- B. tcp
- C. rcp
- D. telnet

Answer: C

QUESTION 198

What is the difference between hot swappable hardware and hot pluggable hardware?

- A. The terms, hot swappable hardware and hot pluggable hardware, mean the same thing
- B. Host swappable hardware applies to disk drives and hot pluggable hardware applies to servers
- C. Host swappable hardware requires configuration and hot pluggable does not require system administrator intervention
- D. Hot pluggable hardware requires system administrator intervention and hot swappable hardware does not

Answer: D

QUESTION 199

You need information about linking files but don't know the specific command to use. Which command points you to the right command?

- A. which link
- B. man -c link
- C. man -k link
- D. apropos link

Answer: C

QUESTION 200

Which commands are recommended to clear the contents an active file called log-file? (Choose two.)

- A. >log-file
- B. trim log-file
- C. freset log-file
- D. cat /dev/null >log-file

Answer: A,D

QUESTION 201

What is the result when a user enters the telnet command without arguments?

- A. An error is returned
- B. Telnet enters command mode
- C. The system connects to its loopback address
- D. The system connects to the last known system address

Answer: B

QUESTION 202

Which command is used to verify remote host connectivity using ICMP Echo Requests?

- A. Inet
- B. Ping
- C. Netstat
- D. Portmap

Answer: B

QUESTION 203

Which command performs formatting of binary data generated by nettl?

- A. nroff -e
- B. netformat -a
- C. nettle -l filename
- D. netfmt -f filename

Answer: D

QUESTION 204

What function does the vhand process perform in the HP-UX operating system?

- A. Reserves swap space when a process is started
- B. Allocates shared memory for IPC communication
- C. Deactivates running processes when free memory is too low
- D. Selects memory pages that have not been recently referenced and copies them out to swap

Answer: D

QUESTION 205

You are trying to display an Xwindow from an application running on a host and get an error indicating the connection is not allowed. Which command will allow you to display on the remote host?

- A. xhost+
- B. dxm -start
- C. export \$DISPLAY
- D. display -hostname

Answer: A

QUESTION 206

Which file contains information about unsuccessful login attempts?

- A. /etc/wtmp
- B. /var/adm/btmps
- C. /var/adm/utmps
- D. /var/syslog/failed_logins

Answer: B

QUESTION 207

What is the result of the following command?

swmodify -x patch_commit=true PHCO_1000

- A. Immediately commit the PHCO_1000 patch at install time
- B. Complete the PHCO_1000 patch installation process and start the reboot
- C. Commit the installed PHCO_1000 patch and reclaim space in /var/adm/sw/save
- D. Install the PHCO_1000 and copy the original, pre-patched files to /var/adm/sw/save

Answer: C

QUESTION 208

The .rhosts file resides in which directory?

- A. /etc
- B. /home
- C. \$HOME
- D. /netconf
- E. /etc/security

Answer: C

QUESTION 209

Which file configures PAM (Pluggable Authentication Module)?

- A. /etc/pam.conf
- B. /sbin/init.d/pam
- C. /opt/PAM/pam.conf
- D. /etc/rc.config/pam

Answer: A

QUESTION 210

Which command does root use to send an instant message to all users?

- A. im
- B. wall
- C. talk
- D. imau

Answer: B

QUESTION 211

Which command displays the IP address to hardware address translation table?

- A. arp
- B. netstat
- C. linkloop
- D. lanscan
- E. nslookup

Answer: A

QUESTION 212

Which main file contains the LVM configuration information?

- A. lvmrc
- B. lvmpvg
- C. lvmtab
- D. lvmconf
- E. lvminfo

Answer: C

QUESTION 213

Which file transfer protocols are used by an ignite server? (Choose two.)

- A. nfs
- B. rcp
- C. scp
- D. tftp
- E. CIFS

Answer: A,D

QUESTION 214

Which separator causes the command following it to be executed only if the preceding pipeline returns a zero values?

- A. ;
- B. ||
- C. &
- D. |&
- E. &&

Answer: E

QUESTION 215

What can be determined using the which command?

- A. Absolute path for an executable
- B. Current version and release of an executable
- C. Compiler options used to create an executable
- D. Pseudo terminal your session is currently logged on

Answer: A

QUESTION 216

Which command displays Internet to Ethernet address translation tables identifying remote machines?

- A. arp
- B. lanscan
- C. ifconfig
- D. traceroute

Answer: A

QUESTION 217

How do you change permission on a file so the owner can modify it, the owner's group can read it and all other users can execute it? (Choose two.)

- A. chmod 754 file
- B. chmod 745 file
- C. chmod u+x,g+r,o+w file
- D. chmod a=w,u=r,o+x file
- E. chmod u+w,g+r,o+rx file

Answer: B,E

QUESTION 218

What are some of the benefits offered by VXVM over LVM? (Choose three.)

- A. Volume snapshots
- B. Online data migration
- C. Dynamic multipathing
- D. Support for encrypted files
- E. Import and Export volumes
- F. Expand and shrink volumes

Answer: A,B,C

QUESTION 219

Which are advantages of the Online JFS file system? (Choose two.)

- A. Supports larger disk drives
- B. Allows more files per file system
- C. Supports online defragmentation
- D. Supports 128 bit encryption of system files
- E. Supports dynamic online resizing of the file system

Answer: C,E

QUESTION 220

Information about the last installation for the local system is stored in which location?

- A. /var/adm/sw/depot
- B. /var/adm/sw/products
- C. /var/adm/sw/filesets
- D. /var/adm/sw/swinstall.log

Answer: D

QUESTION 221

What is the default HP-UX protocol used for secure shell?

- A. SSH-2
- B. SSH-3
- C. OpenSSH3
- D. SSH-AES

Answer: A

QUESTION 222

Which command allows the administrator to modify crontab entries?

- A. cron -a
- B. crontab -e
- C. vi /etc/crontab
- D. /usr/sbin/cron -e

Answer: B

QUESTION 223

Which configuration file determines the synchronization sources and operating modes of NTP?

- A. /etc/xntpd
- B. /etc/ntp.conf
- C. /etc/rc.config/ntpconf
- D. /etc/rc.config.d/netdaemons

Answer: B

QUESTION 224

Which I/O bus technology is supported on Integrity based systems?

- A. PCI
- B. EISA
- C. HSC
- D. EIDE

Answer: A

QUESTION 225

Exhibit:

```
Change to configuration 'nextboot'
at 15:02:06 MET on 13 March 2004 by daemon:
Module 'MouseMUX' version [3F340BA2] changed from unused to static (depend).
Module 'UsbBootMouse' version [3F340BA2] changed from unused to static (explicit).
```

=====

```
Change to configuration 'nextboot'
at 15:03:17 MET on 13 March 2004 by daemon:
Module 'UsbOhci' version [3F340BA2] changed from unused to static (explicit).
Module 'libusbohci' version [3F340BA2] changed from unused to static (depend).
```

=====

```
Change to configuration 'current'
at 15:17:47 MET on 13 March 2004 by root:
Module 'ipf' version 0.1.0 changed from loaded (explicit) to unused (explicit).
```

=====

You work as a network administrator at Certkiller .com. Study the exhibit carefully. What does the expression by root mean in the /var/adm/kc.log?

- A. Kernel module was changed via SAM
- B. Kernel Module was changed via web-browser
- C. Kernel module was changed on command line

D. Kernel module was changed by any user with GID root

Answer: C

QUESTION 226

Which NFS server file contains a list of clients that currently have the server's NFS file systems mounted?

- A. /etc/fstab
- B. /etc/rmtab
- C. /etc/nfstab
- D. /etc/mnttab
- E. /etc/exports

Answer: B

QUESTION 227

During a run-state change from run level 1 and run level 2, which of these scripts would run last?

- A. /sbin/rc2.d/S620xfs
- B. /sbin/rc2.d/S500inetd
- C. /sbin/rc2.d/K200tps.rc
- D. /sbin/rc2.d/K900nfs.server
- E. /sbin/rc2.d/S430nfs.client

Answer: A

QUESTION 228

What can an administrator do to optimize an existing JFS filesystem? (Choose two.)

- A. Increase SWAP size
- B. Change mount options
- C. Change syslog.log size
- D. Increase the number of logical volumes
- E. Use vxtunefs to alter file system parameters

Answer: B,E

QUESTION 229

Which command is used to pvcreate a disk that has been previously used in LVM?

- A. pvcreate -F /dev/dsk/c1t2d0
- B. pvcreate -f /dev/dsk/c1t2d0
- C. pvcreate -B /dev/rdisk/c1t2d0
- D. pvcreate -f /dev/rdisk/c1td0

Answer: D

QUESTION 230

What is the smallest computational component supported by HP-UX 11iv2?

- A. Cell
- B. Core
- C. FPU
- D. CPU

Answer: B

QUESTION 231

Which High Availability cluster configuration are supported by Serviceguard? (Choose three.)

- A. Active/Active
- B. Active/Standby
- C. Rolling Standby
- D. Standby/Standby
- E. Network/Standby
- F. Rolling upgrades

Answer: A,B,C

QUESTION 232

The set_parms command is an interactive system set-up command that allows you to specify which various parameters? (Choose two.)

- A. Sendmail
- B. Timezone
- C. IP Address
- D. Security Parameters

Answer: B,C

QUESTION 233

What does the command touch myfile do if myfile exists?

- A. Nothing
- B. Gives an error
- C. Sets the file size to zeros
- D. Updates the date/time stamp

Answer: D

QUESTION 234

Exhibit:

```
klaus1:x:375:21::/home/klaus1:/usr/bin/ksh
michael:x:225:21::/home/michael:/usr/bin/ksh
```

You work as a network administrator at Certkiller .com. Study the exhibit carefully.
Why do you see an "x" for the users in the second field of the /etc/passwd file?

- A. Password is expired
- B. Blank password is used
- C. User is currently deactivated
- D. Shadow password is enabled

Answer: D

QUESTION 235

What is the default umask value for a non-root user?

- A. 022
- B. 200
- C. 440
- D. 644

Answer: A

QUESTION 236

What does the find / -name datafile return?

- A. Path names of all files called datafile
- B. Number of files called datafile in your current directory
- C. Relative path of files called datafile from your current directory down
- D. Relative path names of all files called datafile in your current directory

Answer: A

QUESTION 237

There are numerous reasons a user may report "The network is down". If you want to verify your ability to communicate across the LAN, which of the following commands would you use?

- A. arp
- B. netstat
- C. lanscan
- D. linkloop

Answer: D

QUESTION 238

What does the file /var/adm/inetd.sec do?

- A. Controls access to kernel subsystems
- B. Stores internet security services history
- C. Specifies extra security for anonymous ftp users
- D. Provides an extra layer of security for HJP-UX systems

Answer: D

QUESTION 239

DRAG DROP

You work as network administrator at Certkiller .com. Your boss, Mrs. Certkiller, is interested in network configuration files.

Match the files with the appropriate definitions.

Options, select from these

/etc/networks

/etc/netgroup

/etc/resolv.conf

/etc/nsswitch.conf

Definitions

Defines databases to be used and search order for aliases, password, hosts, etc.

Contains DNS client configuration information

Associates Internet (IP) addresses with official network names and aliases

Used for permission checking when executing remote mounts, remote logins, and remote shells

Options, place here

Place here

Place here

Place here

Place here

Answer:

Definitions

Defines databases to be used and search order for aliases, password, hosts, etc.

Contains DNS client configuration information

Associates Internet (IP) addresses with official network names and aliases

Used for permission checking when executing remote mounts, remote logins, and remote shells

Options, place here

/etc/nsswitch.conf

/etc/netgroup

/etc/resolv.conf

/etc/networks

QUESTION 240

What does a hard link between two files do?

- A. Allows data to span two files
- B. Allows two users to own the same file
- C. Ensures that two files gets deleted together
- D. Allows multiples file names to reference the same data on disk

Answer: D

QUESTION 241

Which command displays active memory segments?

- A. ipcs
- B. mstat
- C. vmstat
- D. strings /dev/kmem

Answer: A

QUESTION 242

Which Ignite-UX tab should you use to select the Operating Environment you want to install?

- A. Basic
- B. System
- C. Software
- D. Advanced
- E. File system

Answer: A

QUESTION 243

How do you determine which patches are currently installed on the system?

- A. check_patches
- B. swlist -l path
- C. swlist -l depot | grep -i ph
- D. swlist -l product | grep -i patch

Answer: B

QUESTION 244

Which HW components are always found in an HP Integrity Processor-based system?
(Choose three.)

- A. Core I/O
- B. Cell boards

- C. Itanium2 CPU
- D. PCI I/O cards
- E. PA 8900 CPU
- F. HP-PB I/O cards

Answer: A,C,D

QUESTION 245

Which default system policy is defined in a file in the /etc/default directory?

- A. Default system time
- B. Default file system type
- C. Default disk space usage limits
- D. Default password for new users

Answer: B

QUESTION 246

Where are system startup/shutdown scripts located?

- A. /etc/rc2.d
- B. /sbin/init.d
- C. /sbin/config.d
- D. /etc/rc.config.d

Answer: B

QUESTION 247

DRAG DROP

You work as network administrator at Certkiller .com. Your boss, Mrs. Certkiller, is interested in command line commands.

Match the commands with the appropriate definitions.

Options, select from these

insf-e	olrad	machinfo
lanscan	dmesg	ioscan
uname -a		

Definitions

Collect system diagnostic messages from system buffer
Command for online replacing of PCI I/O cards
Create special device files for I/O components
Print detailed machine information
Display LAN device configuration and status
Determine operating system version
Scan I/O system of a HW partition

Options, place here

Place here
Place here
Place here
Place here
Place here
Place here
Place here

Answer:

Definitions

Collect system diagnostic messages from system buffer
Command for online replacing of PCI I/O cards
Create special device files for I/O components
Print detailed machine information
Display LAN device configuration and status
Determine operating system version
Scan I/O system of a HW partition

Options, place here

insf-e
olrad
lanscan
ioscan
dmesg
urame -a
machinfo

QUESTION 248

Which security tool can be used to detect an attack on HP-UX systems?

- A. NIS+
- B. IPSec
- C. IPFilter
- D. Host IDS

E. Secure Shell (ssh)

Answer: D

QUESTION 249

DRAG DROP

Exhibit:

```
root:JoSjaB62RIdnc:0:3:::/sbin/sh
daemon*:1:5:::/sbin/sh
bin*:2:2::/usr/Lid:/shin/sh
sys*:3:3::/
adm*:4:4::/var/adm:/sbin/sh
uucp*:5:3::/var/spool/uucppublic:/usr/lbin/u
ucp/uucico
lp*:9:7::/var/spool/lp:/sbin/sh
nuucp*:11:11::/var/spool/uucppublic:/usr/lbi
n/uucp/uucico
hpd*:27:1:ALLBASE::/sbin/sh
nobody*:-2:-2::/
www*:30:1::/
smbnull*:101:101:DO NOT USE OR DELETE -
needed by Samba:/home/smbnull:/sbin/sh
iwww*:103:1::/home/iwww:/sbin/sh
owww*:104:1::/home/owww:/sbin/sh
mysql*:105:103::/home/mysql:/sbin/sh
mcsg:ZDdarDfNEVEpY:0:3:::/sbin/sh
asghar:A0oxEAKqtOnr6:107:12022:, ,:/home/asgh
ar:/usr/bin/sn
t01adm:ZCX2xKvfpxAQM:203:200:SAP System
Administrator:/home/t01adm:/usr/bin/csh
orat01:R3Tt9fkHXEY6E:204:201:SAP Database
Administrator:/oracle/T01:/usr/bin/csh
postgres*:106:20::/home/postgres:/sbin/sh
sshd*:102:102:sshd
privsep:/var/empty:/bin/false
```

Study the exhibit carefully.

Arrange the fields in the correct order in the /etc/passwd file in an HP-UX system.

/etc/passwd

place here	:	place here	:	place here	:	place here	:	place here	:	place here	:	place here
User Name	:	Shell	:	Home Directory	:	Inactive Days	:	Comments	:	Last Change	:	
Password	:	Commands	:	GID	:	UID	:	Unused	:	Login Message	:	

Answer:

/etc/passwd

User Name	:	Password	:	UID	:	GID	:	Commands	:	Home Directory	:	Login Message
-----------	---	----------	---	-----	---	-----	---	----------	---	----------------	---	---------------

QUESTION 250

DRAG DROP

Using drag and drop, arrange the steps in the correct order to bring a running integrity system into single user mode.

Steps in Sequence	Steps
1 <div>place step 1 here</div>	<div>HPLUX> boot vmunix -is</div>
2 <div>place step 2 here</div>	<div>ISL> hpux -is</div>
3 <div>place step 3 here</div>	<div>interrupt autoboot sequence</div>
	<div>reboot -is</div>
	<div>shutdown -h</div>
	<div>shutdown -ry 0</div>

Answer:

Steps in Sequence
1 <div>shutdown -h</div>
2 <div>interrupt autoboot sequence</div>
3 <div>ISL> hpux -is</div>

QUESTION 251

On an NFS client, which configuration file is used to name the local mount point when mounting a file system from an NFS sever during system boot?

- A. fstab
- B. nfstab
- C. exports
- D. nfs.conf
- E. /etc/exports

Answer: A

QUESTION 252

What is a journaled file system intent log used for?

- A. Provide an audit trail
- B. Log meta data changes
- C. Track mirror transactions

- D. Improve buffer cache performance
- E. Store user data prior to a physical write

Answer: B

QUESTION 253

Which statement is true about a Virtual Network (VPN)?

- A. It is only used behind a firewall
- B. It is a very fast dedicated network
- C. It allows for clear text transmission
- D. It is an encrypted stream over a public network

Answer: D

QUESTION 254

What is PAM(Pluggable Authentication Module) used for?

- A. To enable the ftp service with encryption
- B. To tell each service which authentication module to use
- C. To indicate which service can run in a nonsecure mode
- D. To encrypt and authenticate IP packets at the network layer

Answer: B

QUESTION 255

Which file contains the information sent in response to a bootp request?

- A. /etc/services
- B. /etc/bootptab
- C. /etc/inetd.conf
- D. /etc/bootp.conf

Answer: B

QUESTION 256

The HP-UX System Management Homepage is started using which URL?

- A. http://hostname
- B. http://hostname:80
- C. http://hostname:2301
- D. http://hostname/hpsmh

Answer: C

QUESTION 257

Which command ends an unresponsive process?

- A. Stop PID
- B. Nice PID
- C. Kill -s SIGSTOP PID
- D. Kill -s SIGKILL PID

Answer: D

QUESTION 258

Which are advantages of the Online JFS file system? (Choose two.)

- A. Supports larger disk drives
- B. Allows more files per file system
- C. Supports online defragmentation
- D. Supports 128 bit encryption of system files
- E. Supports dynamic online resizing of the file system

Answer: C,E

QUESTION 259

Which program invokes internet server processes as needed?

- A. inetd
- B. ifconfig
- C. swconfig
- D. svrconfig

Answer: A

QUESTION 260

Which information is provided in the swlist output by default? (Choose three.)

- A. Version Number
- B. Product/Bundle Size
- C. Product/Bundle name
- D. Description of the product/bundle
- E. Directory where product/bundle is installed

Answer: A,C,D

QUESTION 261

What does the pvcreate command create?

- A. A hard partition

- B. The physical links
- C. A physical volume device file
- D. The lvm disk resident structures

Answer: D

QUESTION 262

Which are structures inside a journal file system? (Choose two.)

- A. mcells
- B. intent log
- C. fragment
- D. inode table
- E. Cylinder group

Answer: B,D

QUESTION 263

What are some of the benefits offered by VXVM over LVM? (Choose three.)

- A. Volume snapshots
- B. Online data migration
- C. Dynamic multipathing
- D. Support for encrypted files
- E. Import and Export volumes
- F. Expand and shrink volumes

Answer: A,B,C

QUESTION 264

What is the purpose of the lvextend command?

- A. Extends a file system within a logical volume
- B. Increases the size of active swap
- C. Extends a logical volume groups
- D. Increases the size of a logical volume
- E. Shares a logical volume with another system

Answer: D

QUESTION 265

How do you change a volume group name without reloading the data?

- A. It is not possible
- B. vgchage
- C. vgexport, mkdir, mknod, vgimport

D. vgremove, mkdir, mknod, vgcreate

Answer: C

QUESTION 266

Which command configures an IP Address on an HP-UX system?

- A. ifconfig
- B. ipconfig
- C. netconfig
- D. lanconfig

Answer: A

QUESTION 267

Which commands can confirm host name resolution (DNS/BIND) is working correctly?

- A. whois
- B. uname
- C. nsquery
- D. hostname
- E. gethostbyname

Answer: C

QUESTION 268

Which command can be used to show all physical volumes in a volume group?

- A. vgdisplay
- B. pvdisplay
- C. lvdisplay
- D. lvmdisplay

Answer: A

QUESTION 269

DRAG DROP

Using drag and drop, match each command with the corresponding description.

HP0-841

	Descriptions	Commands
place here	determine operating system version	machinfo
place here	command for online replacing of PCI I/O cards	lanscan
place here	scan I/O system of a HW partition	dmesg
place here	collect system diagnostic messages from system buffer	uname -a
place here	print detailed machine information	lanscan
place here	create special device files for I/O components	olad
place here	display LAN device configuration and status	inf -e

Answer:

uname -a	determine operating system version
olad	command for online replacing of PCI I/O cards
machinfo	scan I/O system of a HW partition
inf -e	collect system diagnostic messages from system buffer
lanscan	print detailed machine information
lanscan	create special device files for I/O components
dmesg	display LAN device configuration and status

QUESTION 270

. Click the Task button: Using Point and click, identify on the password field of user user1, user2 or user3 in the /etc/passwd file that is displayed in the graphic:

```
root:qmAj8as.,8a3e:0:3:::/bin/sh
daemon:*:1:5:::/sbin/sh
user1:AdOK60AazRgXU:1001:1001:111-1111:/home/user1:/usr/bin/sh
user2:AdOK60AazRgXU:1002:1001:222-2222:/home/user2:/usr/bin/sh
user3:AdOK60AazRgXU:1003:1001:333-3333:/home/user3:/usr/bin/sh
```

Answer:

```
root:qmAj8as.,8a3e:0:3:::/bin/sh
daemon:*:1:5:::/sbin/sh
user1:AdOK60AazRgXU:1001:1001:211 11111/home/user1:/usr/bin/sh
user2:AdOK60AazRgXU:1002:1001:222-2222:/home/user2:/usr/bin/sh
user3:AdOK60AazRgXU:1003:1001:333-3333:/home/user3:/usr/bin/sh
```