



Working Instruction, Mechanical

Applicable for W810

CONTENTS

1	Introduction	3
1.1	Equipment.....	4
1.2	General cautions	5
1.3	Adhesives	5
2	Disassembly	6
2.1	Overview	6
2.1.1	Battery Cover & Battery.....	7
2.1.2	Antenna Cover	8
2.1.3	Front.....	9
2.1.4	Keypad	11
2.1.5	Plastic Carrier & Key Foil ass'y	12
2.1.6	LCD	13
2.1.7	PBA.....	14
3	Replacements.....	15
3.1	Battery Cover.....	16
3.2	Antenna Cover.....	16
3.3	Front	16
3.4	Keypad	16
3.5	LCD	16
3.6	Frame	16
3.7	Camera	17
3.8	Antenna	18
3.9	Speaker Box.....	20
3.10	Camera Flex	22
3.11	Vibrator.....	23
3.12	Bluetooth Antenna	24
3.13	IrDA Window	25
3.14	On/Off Key.....	26
3.15	Volume Key.....	27
3.16	Music Player Key.....	28
3.17	Camera Key.....	29
3.18	Camera Gasket	30
3.19	Camera Glas	31
3.20	System Connector.....	32
3.21	Gasket, system connector.....	33
3.22	Support Pad, LCD.....	34
3.23	Camera Flex Pad (lower).....	35



3.24 Camera Flex Pad (upper) & Camera BTB Tape	36
3.25 Plastic Carrier & Key Foil ass'y	37
3.26 Ground Springs	38
3.27 Spacer, board-to-board connector	39
3.28 Liquid Intrusion Indicator	40
3.29 Memory Card Rubber Lid	41
3.30 Plug, external antenna	42
3.31 Label	43
4 Reassembly	44
4.1 Overview	44
4.1.1 PBA	45
4.1.2 LCD	46
4.1.3 Plastic Carrier & Key Foil ass'y	47
4.1.4 Keypad	49
4.1.5 Front.....	50
4.1.6 Antenna Cover	51
4.1.7 Battery & Battery Cover.....	52
5 Revision history	53

1 Introduction

W810



1.1 Equipment

SPECIAL TOOLS

No new special tools are introduced:

- NTZ 122 459 Torque screwdriver (or equivalent)
- NTZ 122 288 Torx bit no. 6
- NTZ 112 1052 Phillips bit
- NTZ 122 521 Flex film assembly tool
- NTZ 112 302/2 Front opening tool



STANDARD TOOLS

Standard tools have to be locally purchased:

- Dentist hook
- Blunt pair of tweezers
- Guitar pick



ESD EQUIPMENT

Protect the phone from ESD damages whenever it has been opened by using:

- ESD-wristband
- ESD-gloves



LABEL EQUIPMENT

The following special equipment is required when replacing or installing a new label:

- Hot air flow solder station
- Zebra printer connected to computer





1.2 General cautions

The following cautions are considered to be generic for all phone models and will not be repeated in the Disassembly, Replacements and Reassembly sections:

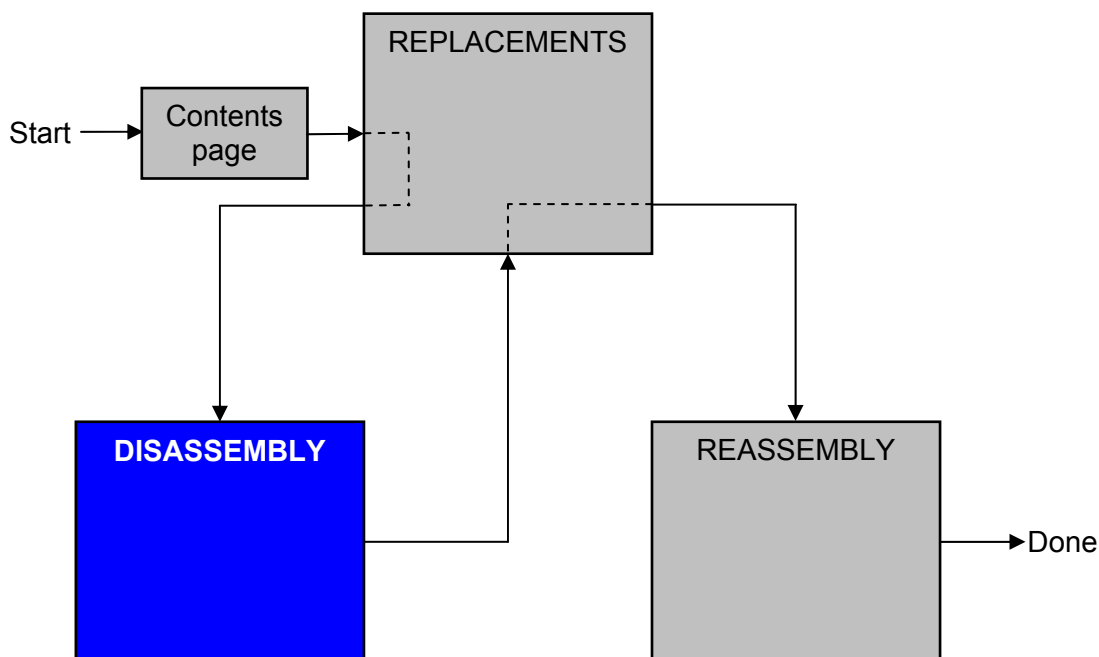
- **SWITCH OFF THE PHONE AND REMOVE ANY MEMORY STICK BEFORE THE START OF THE DISASSEMBLY!**
- **KEEP ALL CONTACT SURFACES CLEAN!**
- **BE CAREFUL WHEN USING TOOLS LIKE THE DENTIST HOOK, TWEEZERS, OPENING TOOLS, GUITAR PICK ETC. TO AVOID SCRATCHES OR DAMAGES TO THE EXTERIOR AND INTERIOR PARTS OF THE PHONE!**
- **BE CAREFUL NOT TO DAMAGE ANY CONTACT SPRINGS!**
- **REMEMBER TO REMOVE THE PROTECTION FOILS ON NEW PARTS SUCH AS THE FRONT COVER AND LCD!**
- **NEVER TOUCH THE DISPLAY GLASS!**
- **USE AIR BLOW EQUIPMENT TO KEEP THE FRONT WINDOW AND DISPLAY MODULE DUST FREE!**

1.3 Adhesives

Use a dentist hook and/or the tweezers to remove old adhesives.
Clean the surface with isopropyl alcohol before attaching new adhesives.

2 Disassembly

When you are going to replace a part being listed in *Replacements*, the instruction of that section usually begins by directing you to this *Disassembly* section with a specification of the instructions you have to carry out in order to disassemble the phone as far as needed before returning to *Replacements* for the actual replacement.



2.1 Overview

The disassembly is done in the following sequence:

1. Battery Cover (a) and Battery (b)
2. Antenna Cover
3. Front
4. Keypad
5. Plastic Carrier & Key Foil ass'y
6. LCD
7. PBA



2.1.1 Battery Cover & Battery

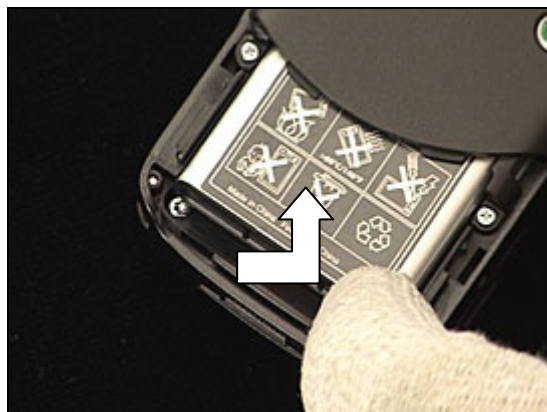
Release the *battery cover* from its latched position ...



and slide it until it can be removed.



Push inwards and lift upwards to release the *battery* ...



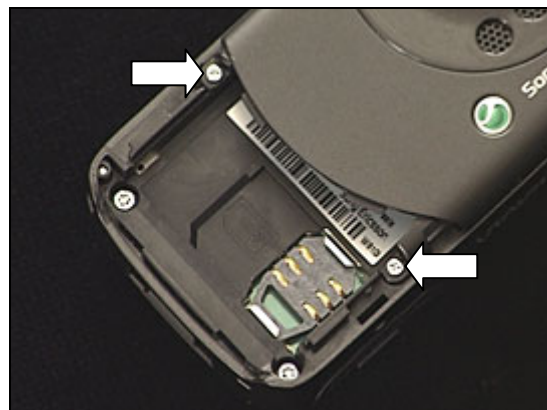
and slide it out of its compartment.



2.1.2 Antenna Cover

Remove the two screws by using the Phillips bit.

REMOVED SCREWS CANNOT BE REUSED!



Insert the guitar pick as shown here.

To open up the gap, use your thumb to bend the *antenna cover* upwards.



Gently slide the guitar pick along the side (1) until that side of the *antenna cover* is released.

Then do the corresponding at the top (2).



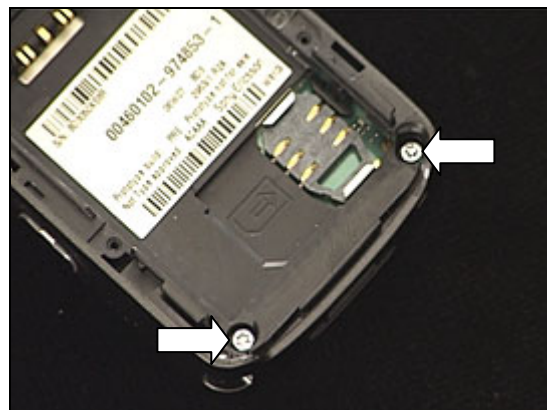
Gently wiggle the *antenna cover* to release it completely and remove it by lifting straight up.



2.1.3 Front

Remove the two screws by using torx bit no. 6 (T6).

REMOVED SCREWS CANNOT BE REUSED!



BE MOST CAREFUL WHEN SLIDING THE GUITAR PICK WHERE THE FRAME HOOKS SECURE THE FRONT!



Insert the guitar pick as shown here and gently slide it along the side (1) until that side of the *front* is released. Then do the corresponding at the opposite side (2).



WHEN SEPARATING THE FRONT FROM THE FRAME YOU HAVE TO BE MOST CAREFUL NOT TO DAMAGE THESE PARTS AND IN PARTICULAR AVOID DAMAGE TO THE FRONT CAUSED BY THE INSIDE TOP HOOK OF THE FRAME!



Front continued

**DO NOT BEND THE FRONT TOO MUCH APART FROM THE FRAME
TO AVOID DAMAGES TO THE FRONT CAUSED BY THE TOP HOOK!**



While keeping the *front* slightly bent upwards,
wiggle it gently side to side (1) and at the same time pull it
away (2) from the frame.



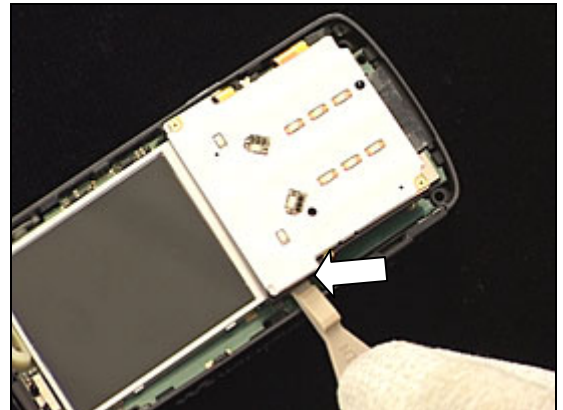
2.1.4 Keypad

Remove the *keypad* by hand or by tweezers.



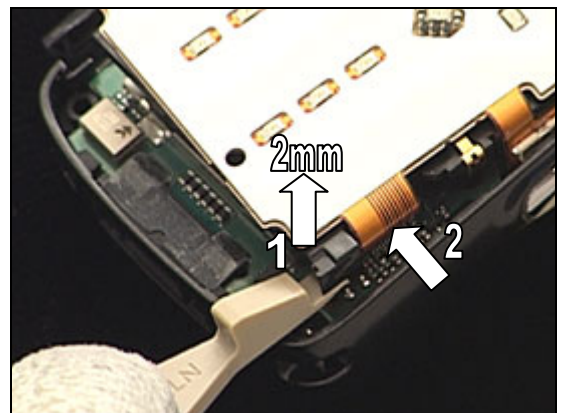
2.1.5 Plastic Carrier & Key Foil ass'y

Use the 'front opening tool' to gently release the *plastic carrier & key foil* from the left hand side of the frame.



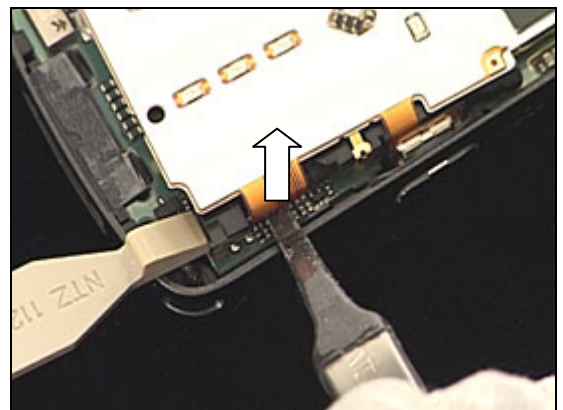
WHEN RAISING (1) THE PLASTIC CARRIER & KEY FOIL, THIS MUST NOT EXCEED 2 MM AS IT MIGHT CAUSE DAMAGE TO THE BOARD-TO-BOARD CONNECTOR (2)!

Gently raise the *plastic carrier & key foil* in order to get closer to the board-to-board connector by using the 'front opening tool' (1).



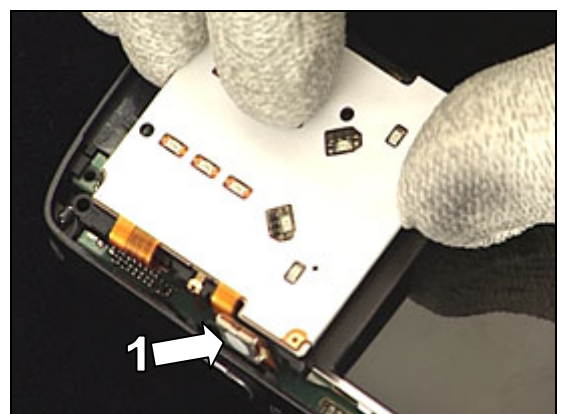
BE MOST CAREFUL WHEN YOU ARE GOING TO DISCONNECT THE BOARD-TO-BOARD CONNECTOR!

While keeping the *plastic carrier & key foil* in a 2mm raised position, disconnect the key foil flex film board-to-board connector by pushing it upwards from the PBA with the use of the 'flex film assembly tool'.



CHECK THAT THE KEY FOIL SWITCH (1) DOES NOT GET STUCK!

Remove the *plastic carrier & key foil* by lifting straight up.



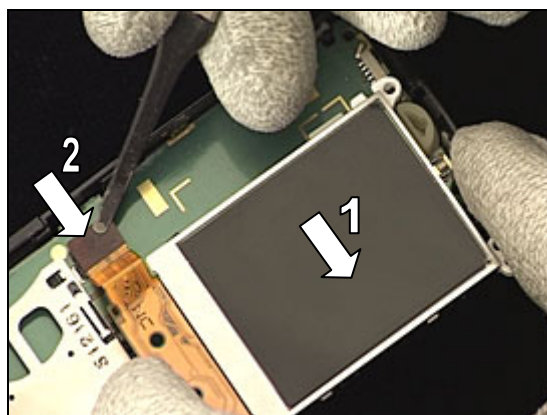
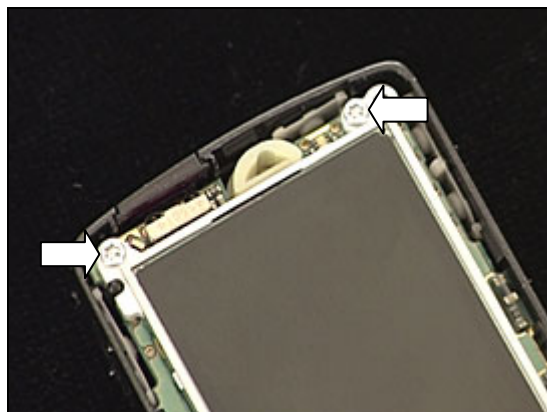
2.1.6 LCD

Remove the two screws by using torx bit no. 6.

REMOVED SCREWS CANNOT BE REUSED!

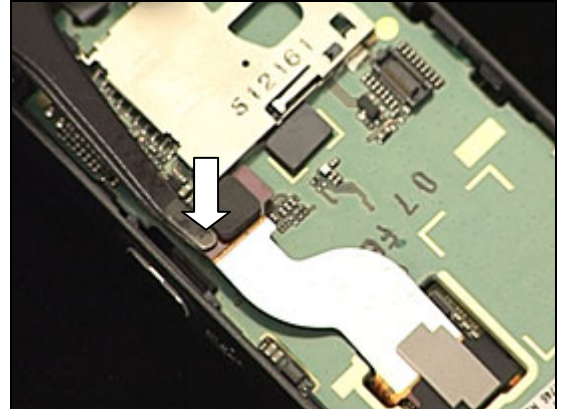
Move the *LCD* (1) slightly to the right to get access to the board-to-board connector (2).

Disconnect the camera flex film board-to-board connector by lifting it upwards with the 'flex film assembly tool' and remove the *LCD*.

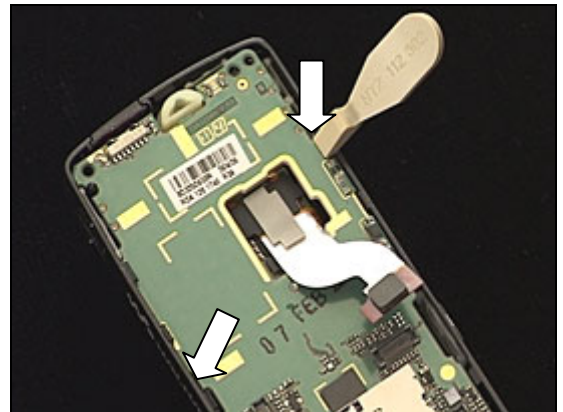


2.1.7 PBA

Disconnect the camera flex film board-to-board connector by lifting it upwards with the 'flex film assembly tool'.

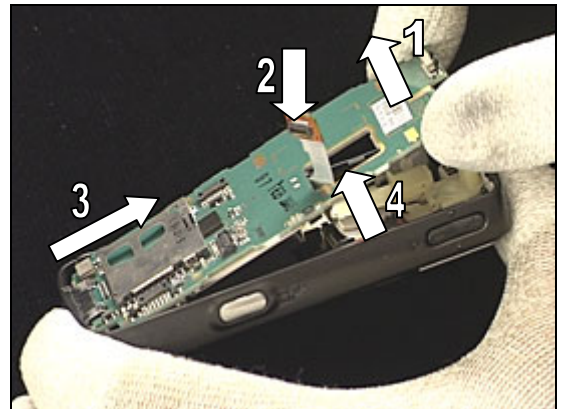


Use the 'front opening tool' to release the *PBA* from the frame by placing the 'front opening tool' as shown and pressing down to unsnap the *PBA*.
Do the same thing on the opposite side in the position indicated by the arrow.



DO NOT BEND (1) THE PBA TOO MUCH UPWARDS!
MAKE SURE THAT THE CAMERA FLEX FILM (2) DOES NOT GET STUCK DURING THIS OPERATION!

To remove the *PBA*, lift the top just enough so it can be pulled out from the bottom (3) and so that the camera flex film (2) can smoothly pass through the *PBA* hole (4).



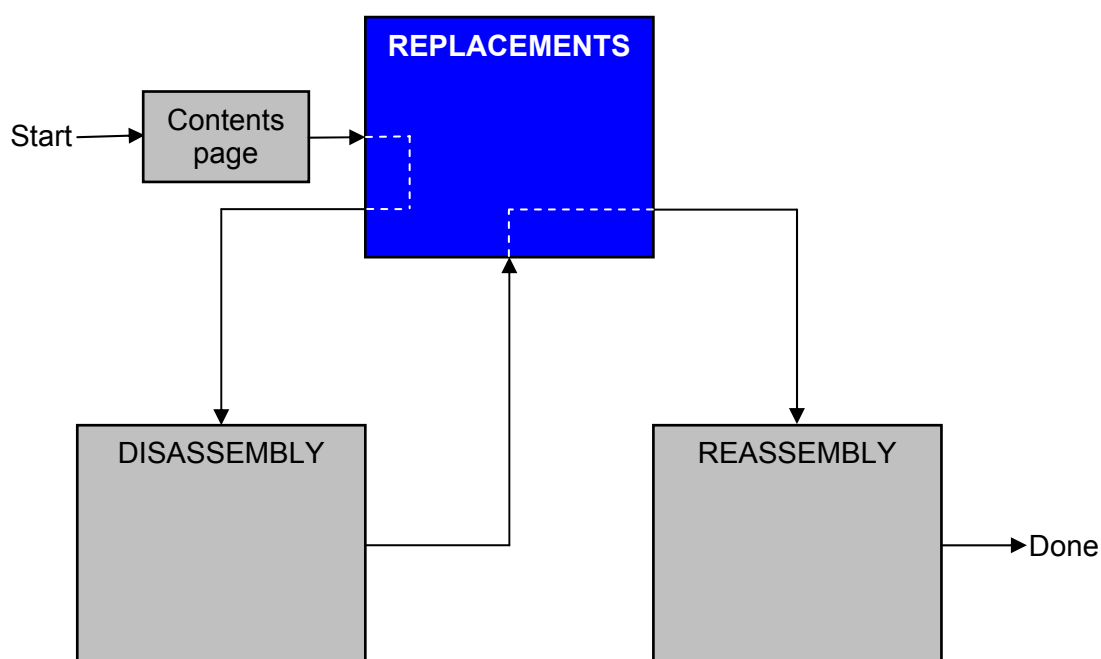
3 Replacements

Search for the part to be replaced on the Contents page and go to that instruction to be found in this *Replacements* section.

The instruction usually begins by directing you to the *Disassembly* section with a specification of the instructions you have to carry out in order to disassemble the phone as far as needed before the actual replacement.

Go back to this *Replacements* section and carry out the instruction.

The instruction usually ends by directing you to the *Reassembly* section with a specification of the instructions you have to carry out in order to reassemble the phone.



3.1 Battery Cover

Follow the 2.1.1 Disassembly instructions!

Prepare the new *battery cover*.

Follow the 4.1.7 Reassembly instructions!

3.2 Antenna Cover

Follow the 2.1.1 – 2.1.2 Disassembly instructions!

Prepare the new *antenna cover*.

Install an external antenna plug as described in 3.29

Follow the 4.1.6 – 4.1.7 Reassembly instructions!

3.3 Front

Follow the 2.1.1 – 2.1.3 Disassembly instructions!

Prepare the new *front*.

Follow the 4.1.5 – 4.1.7 Reassembly instructions!

3.4 Keypad

Follow the 2.1.1 – 2.1.4 Disassembly instructions!

Prepare the new *keypad*.

Follow the 4.1.4 – 4.1.7 Reassembly instructions!

3.5 LCD

Follow the 2.1.1 – 2.1.6 Disassembly instructions!

Prepare the new *LCD*.

Follow the 4.1.2 – 4.1.7 Reassembly instructions!

3.6 Frame

Follow the 2.1.1 – 2.1.7 Disassembly instructions!

Remove the parts as described in 3.7 – 3.17 & 3.28

Prepare the new *frame*.

Install the parts as described in 3.7 – 3.17 & 3.27, 3.28, 3.30

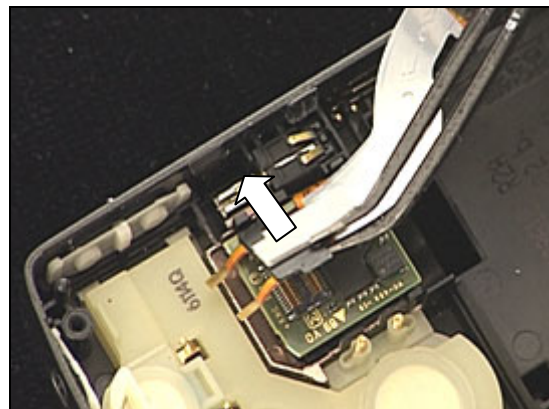
Follow the 4.1.1 – 4.1.7 Reassembly instructions!

3.7 Camera

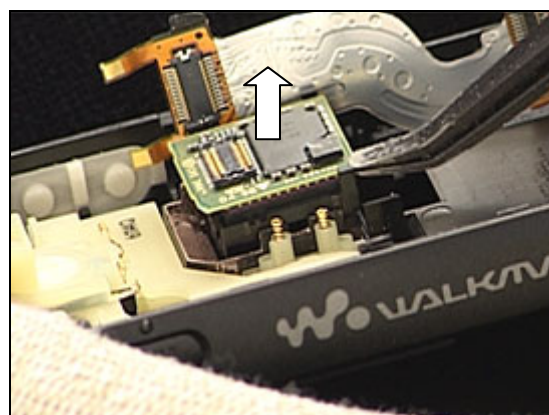
Follow the 2.1.1 – 2.1.7 Disassembly instructions!

DO NOT TOUCH THE CAMERA LENS!

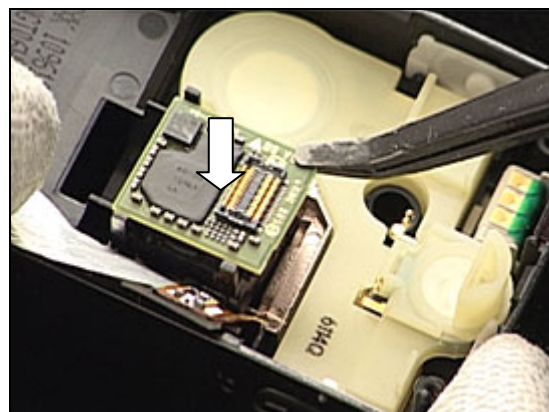
Disconnect the camera flex film board-to-board connector by lifting it upwards with the 'flex film assembly tool'.



Remove the *camera* by lifting it straight up.

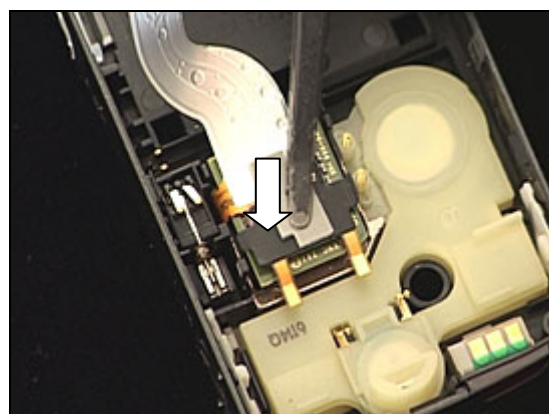


Mount the *camera* by gently pushing it through the hole.



Connect the flex film board-to-board connector to the camera with your fingers or with the 'flex film assembly tool'.

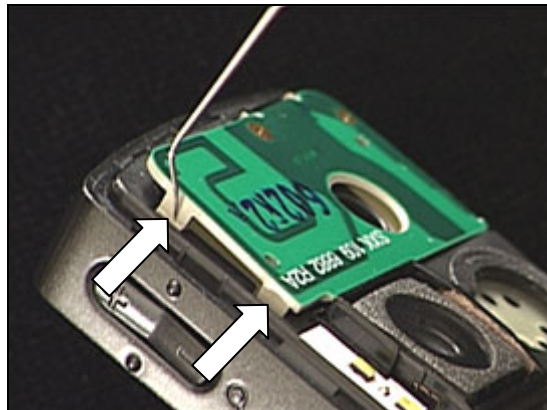
Follow the 4.1.1 – 4.1.7 Reassembly instructions!



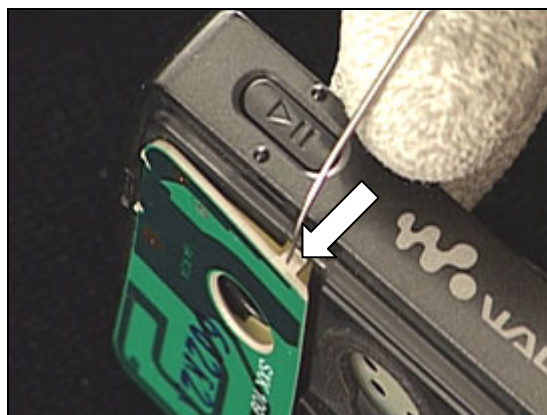
3.8 Antenna

Follow the 2.1.1 – 2.1.7 Disassembly instructions!

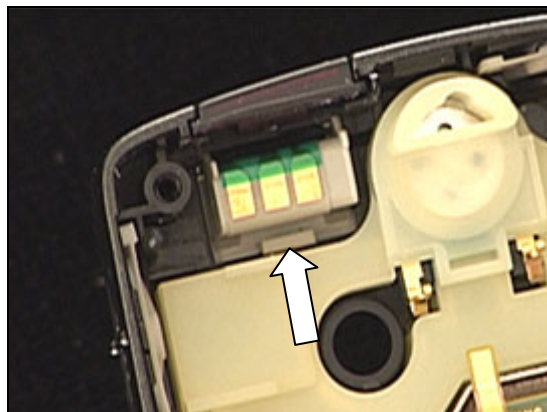
Unsnap the two hooks with the dentist hook.



Do the same thing with the single hook on the opposite side.



Push gently from the inside with the tweezers on the spot indicated by the arrow ...



until the *antenna* is released from the frame.



Antenna *continued*

Place the new *antenna* in its proper position and then press on the left and right hand sides to make it snap to the frame.

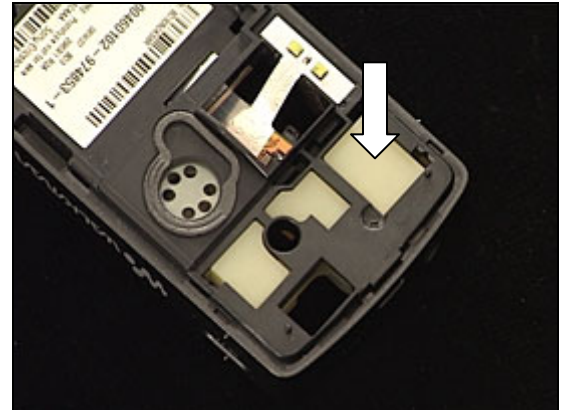
Follow the 4.1.1 – 4.1.7 Reassembly instructions!



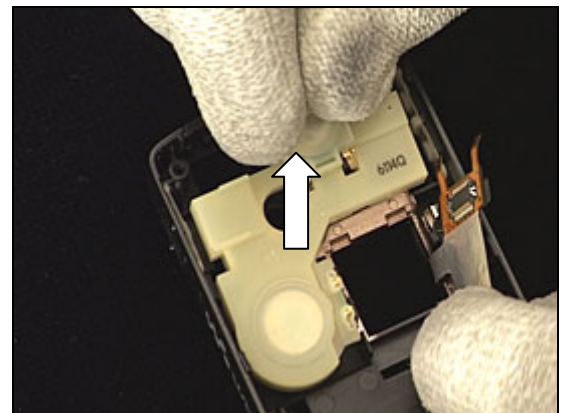
3.9 Speaker Box

*Follow the 2.1.1 – 2.1.7 Disassembly instructions!
Remove the camera as described in 3.7!
Remove the antenna as described in 3.8!*

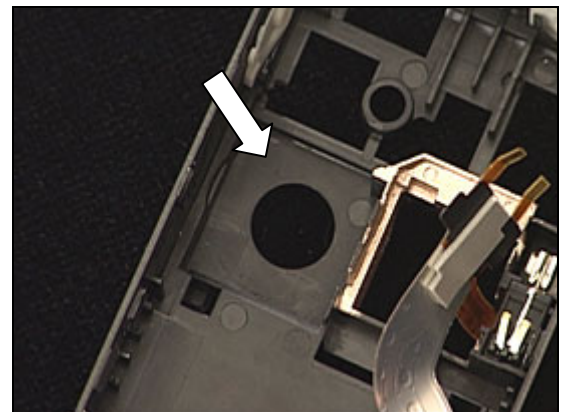
Press with your finger as indicated by the arrow until the *speaker box* starts getting loose from the frame.



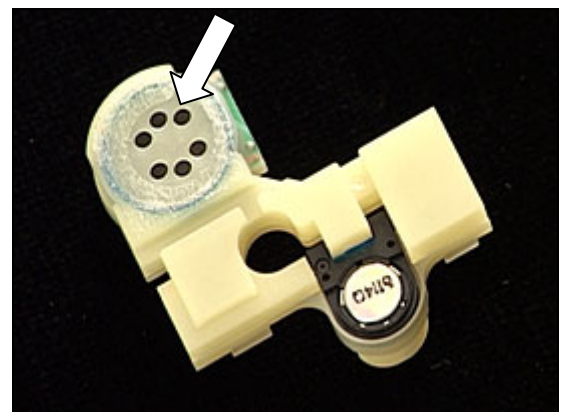
Gently pull the *speaker box* out of the frame until it can be removed.



CLEAN THE SURFACE OF THE SPEAKER CAVITY WITH ISOPROPYL ALCOHOL!



Peel off the protection foil (new *speaker box* only)



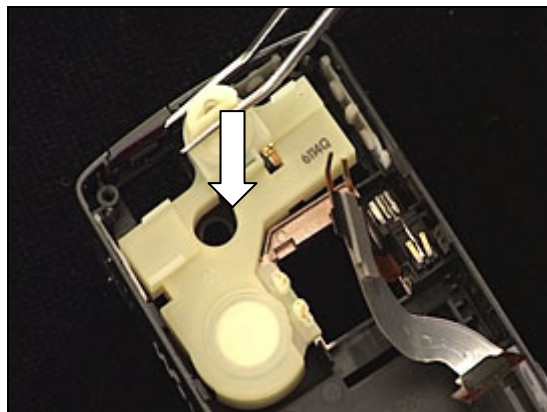
Speaker Box *continued*

Place the *speaker box* in its proper position and press with your fingers until it is securely attached to the frame.

Install the antenna as described in 3.8!

Install the camera as described in 3.7!

Follow the 4.1.1 – 4.1.7 Reassembly instructions!



3.10 Camera Flex

*Follow the 2.1.1 – 2.1.7 Disassembly instructions!
Remove the camera as described in 3.7!*

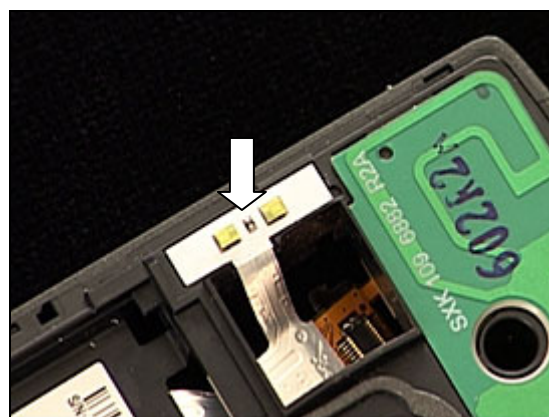
Gently bend with the dentist hook under the Flash LEDs of the *camera flex* until it becomes loose and can be removed down through the camera hole.



CLEAN THE SURFACE OF THE FRAME WITH ISOPROPYL ALCOHOL!

Attach new adhesives on the frame!

Gently slide the Flash LED part of the *camera flex* up through the camera hole and attach the Flash LEDs of the *camera flex* to the frame.

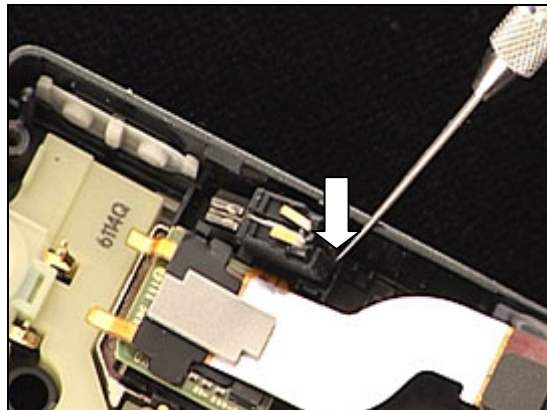


*Install the camera as described in 3.7!
Follow the 4.1.1 – 4.1.7 Reassembly instructions!*

3.11 Vibrator

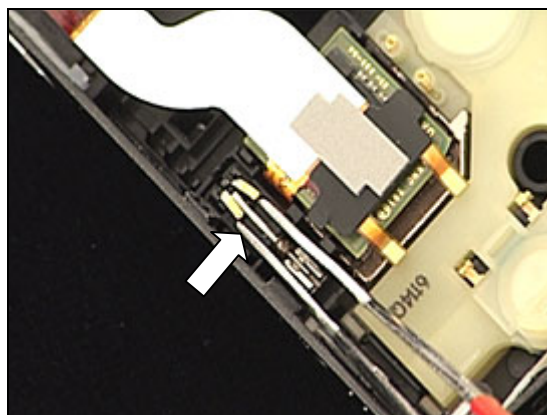
Follow the 2.1.1 – 2.1.7 Disassembly instructions!

Use the dentist hook to raise the *vibrator* out of its cavity and then remove it with the tweezers.



Use the tweezers to place the *vibrator* in its proper position and press gently on the housing, without touching the contacts, until it reaches the bottom of the cavity.

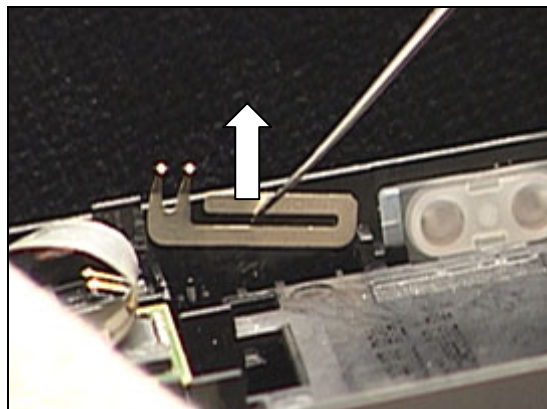
Follow the 4.1.1 – 4.1.7 Reassembly instructions!



3.12 Bluetooth Antenna

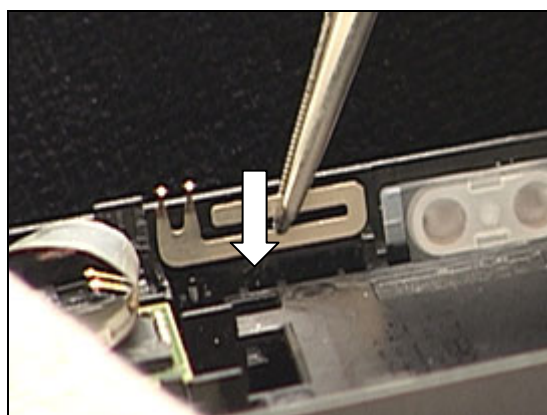
Follow the 2.1.1 – 2.1.7 Disassembly instructions!

Slide the *bluetooth antenna* upwards with a dentist hook to release it and remove it with the tweezers.



Install the *bluetooth antenna* by using the tweezers to put it into its slot.

Follow the 4.1.1 – 4.1.7 Reassembly instructions!



3.13 IrDA Window

Follow the 2.1.1 – 2.1.7 Disassembly instructions!

Remove the *IrDA window* by using the 'flex film assembly tool' or your fingers.

Install the *IrDA window* by using the 'flex film assembly tool' or your fingers.

Follow the 4.1.1 – 4.1.7 Reassembly instructions!



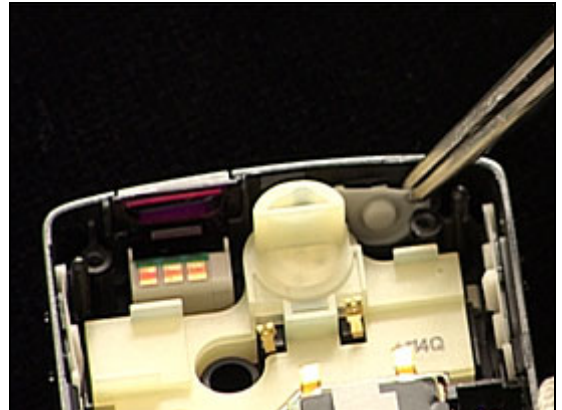
3.14 On/Off Key

Follow the 2.1.1 – 2.1.7 Disassembly instructions!

Remove the *on/off* key with the tweezers.

Install the *on/off* key with the tweezers.

Follow the 4.1.1 – 4.1.7 Reassembly instructions!



,

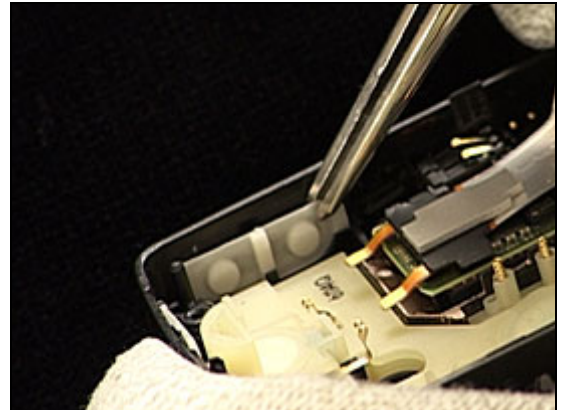
3.15 Volume Key

Follow the 2.1.1 – 2.1.7 Disassembly instructions!

Remove the *volume key* with the tweezers.

Install the *volume key* with the tweezers.

Follow the 4.1.1 – 4.1.7 Reassembly instructions!



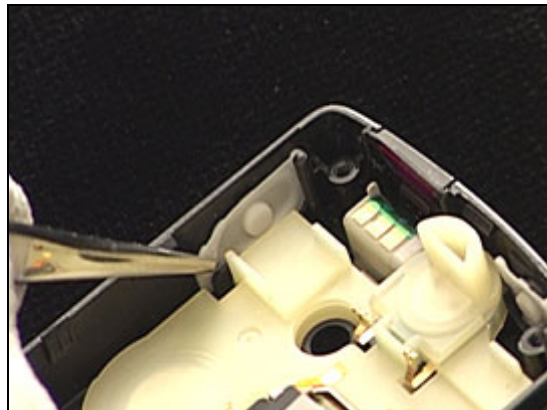
3.16 Music Player Key

Follow the 2.1.1 – 2.1.7 Disassembly instructions!

Remove the *music player key* with the tweezers.

Install the *music player key* with the tweezers.

Follow the 4.1.1 – 4.1.7 Reassembly instructions!



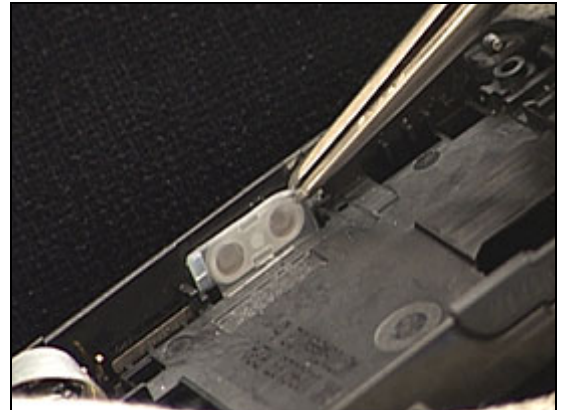
3.17 Camera Key

Follow the 2.1.1 – 2.1.7 Disassembly instructions!

Remove the *camera key* with the tweezers.

Install the *camera key* with the tweezers.

Follow the 4.1.1 – 4.1.7 Reassembly instructions!



,



3.18 Camera Gasket

Follow the 2.1.1 – 2.1.7 Disassembly instructions!

Remove the camera as described in 3.7!

DO NOT TOUCH THE CAMERA LENS!

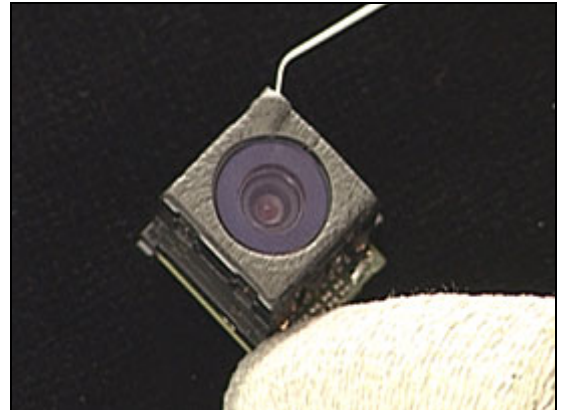
Gently remove the *camera gasket* with the dentist hook and the tweezers.

CLEAN THE SURFACE WITH ISOPROPYL ALCOHOL!

Attach a new *camera gasket* with the tweezers and your fingers.

Install the camera as described in 3.7!

Follow the 4.1.1 – 4.1.7 Reassembly instructions!





3.19 Camera Glas

REMOVAL

Follow the Removal instructions of section 2.1.1 – 2.1.7

Remove the camera as described in 3.7!

Be careful not to damage the camera and its flexfilm.

Gently remove the old camera glas with a blunt pair of tweezers.

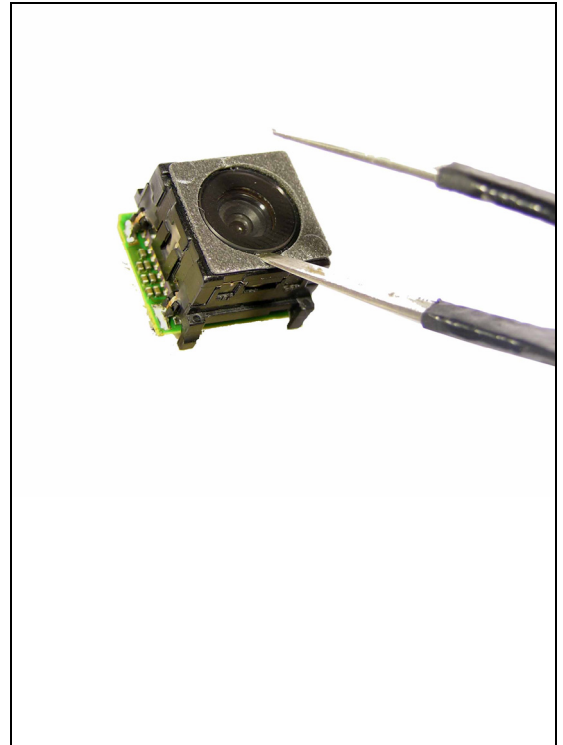
ASSEMBLY

If necessary, clean the surface of the camera with isopropyl alcohol before attaching a new glas. Be careful not to get any alcohol in the camera!

Attach a new camera glas with the tweezers.

Install the camera as described in 3.7!

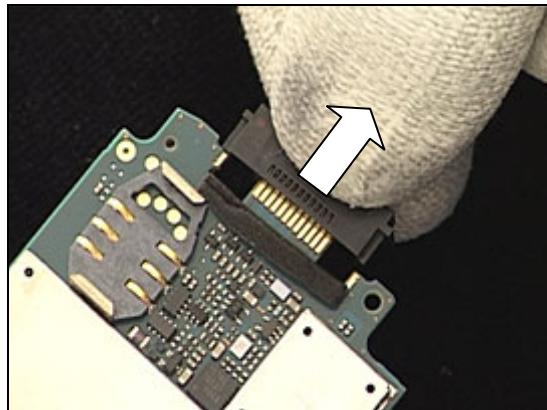
Follow the Assembly instructions of section 4.1.1 – 4.1.7



3.20 System Connector

Follow the 2.1.1 – 2.1.7 Disassembly instructions!

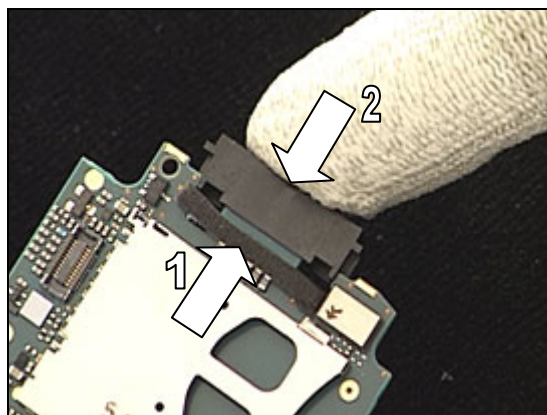
Pull the *system connector* from the PBA.



**CHECK THAT THE GASKET (1) IS MOUNTED ON THE PBA!
IF NOT, INSTALL A GASKET AS DESCRIBED IN 3.20!**

Push (2) the *system connector* onto the PBA.

Follow the 4.1.1 – 4.1.7 Reassembly instructions!



3.21 Gasket, system connector

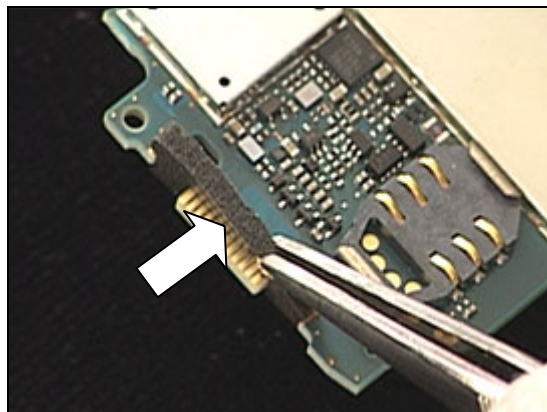
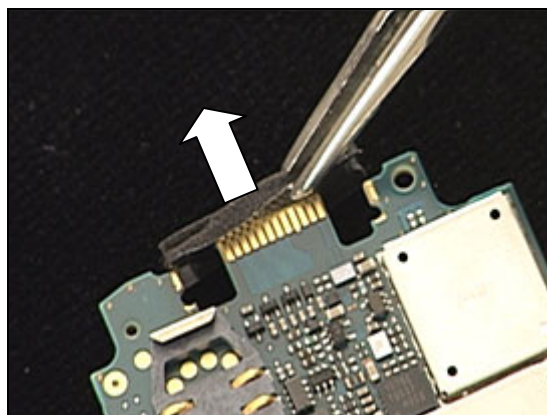
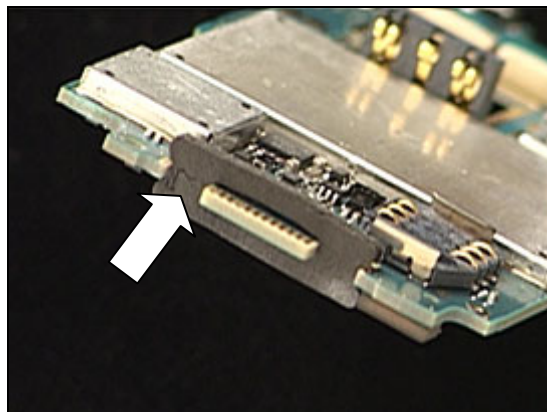
*Follow the 2.1.1 – 2.1.7 Disassembly instructions!
Remove the system connector as described in 3.19!*

Remove the system connector gasket ...

by pulling it out from the PBA with the tweezers.

Install a new *system connector gasket* by pushing it onto the PBA with the tweezers.

*Install the system connector as described in 3.19!
Follow the 4.1.1 – 4.1.7 Reassembly instructions!*



3.22 Support Pad, LCD

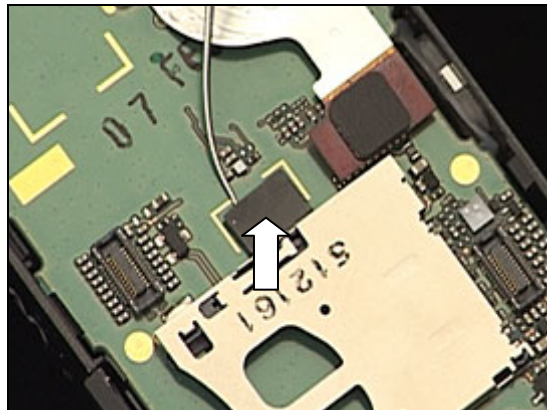
Follow the 2.1.1 – 2.1.6 Disassembly instructions!

Remove the pad with the dentist hook.

CLEAN THE SURFACE WITH ISOPROPYL ALCOHOL!

Attach a new pad by using the tweezers.

Follow the 4.1.2 – 4.1.7 Reassembly instructions!



3.23 Camera Flex Pad (lower)

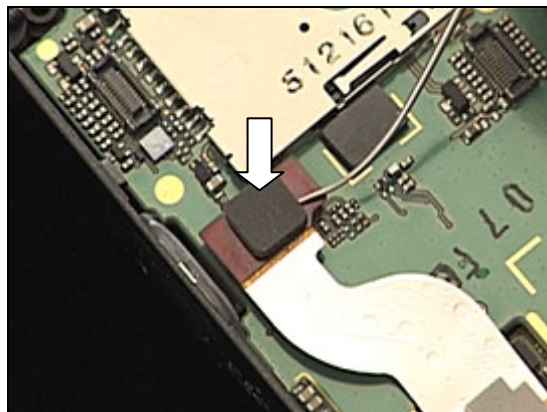
Follow the 2.1.1 – 2.1.6 Disassembly instructions!

Remove the pad with the dentist hook.

CLEAN THE SURFACE WITH ISOPROPYL ALCOHOL!

Attach a new pad by using the tweezers.

Follow the 4.1.2 – 4.1.7 Reassembly instructions!



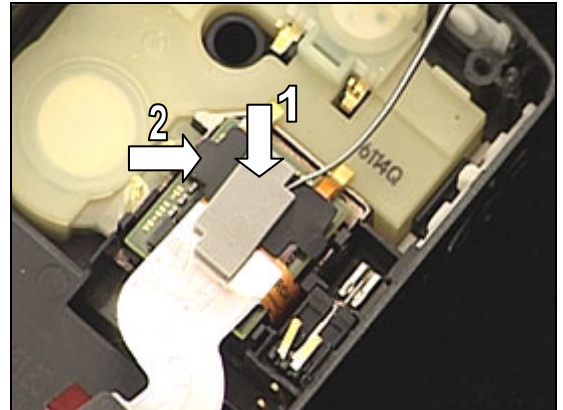


3.24 Camera Flex Pad (upper) & Camera BTB Tape

Follow the 2.1.1 – 2.1.7 Disassembly instructions!

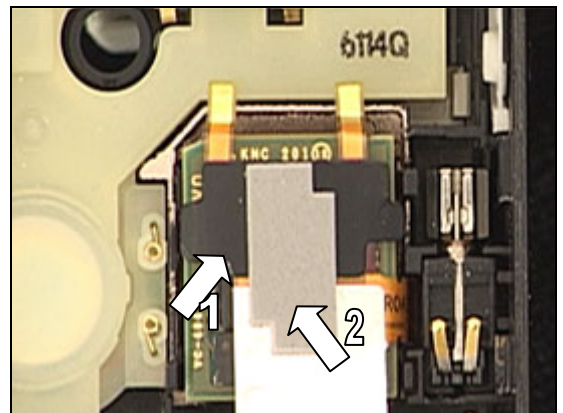
Remove the pad (1) and the tape (2) with the dentist hook.

CLEAN THE SURFACE WITH ISOPROPYL ALCOHOL!



Attach the new tape (1) and then the new pad (2) with the tweezers in the positions shown in the picture.

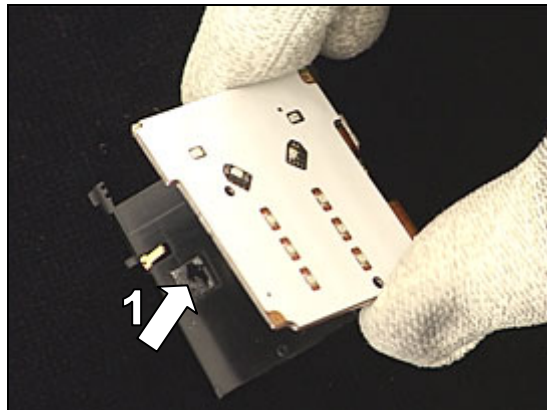
Follow the 4.1.1 – 4.1.7 Reassembly instructions!



3.25 Plastic Carrier & Key Foil ass'y

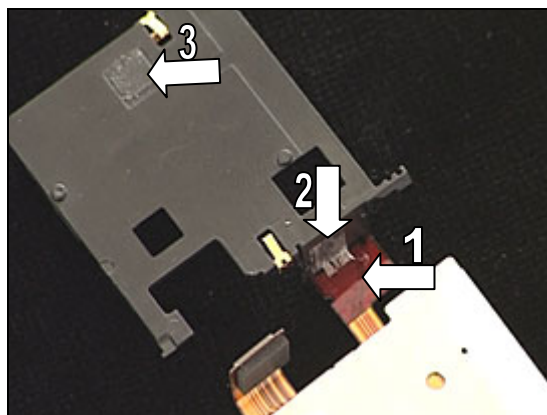
Follow the 2.1.1 – 2.1.5 Disassembly instructions!

Separate the *key foil* from the *plastic carrier* by loosening it from the adhesive (1).



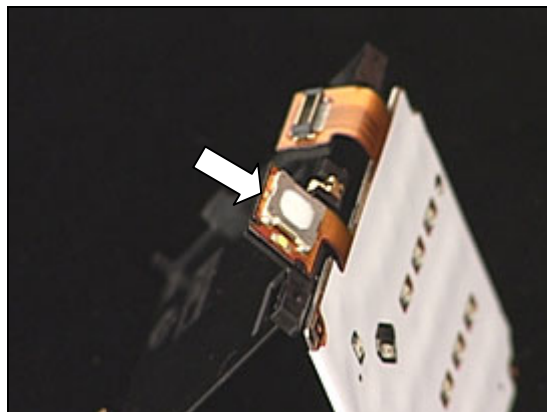
Loosen the key foil switch (1) from the *plastic carrier* adhesive (2).

Prepare the new *plastic carrier* and/or the new *key foil*.
Attach two new adhesives (2, 3) to the *plastic carrier*.



Attach the key foil switch to the adhesive of the *plastic carrier*.

Continue the reassembly described in section 4.1.3!
Follow the 4.1.4 – 4.1.7 Reassembly instructions!





3.26 Ground Springs

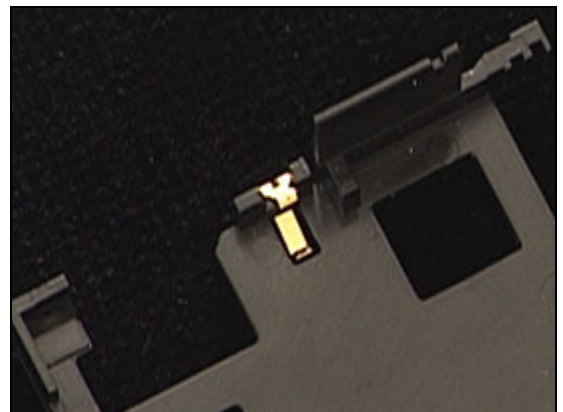
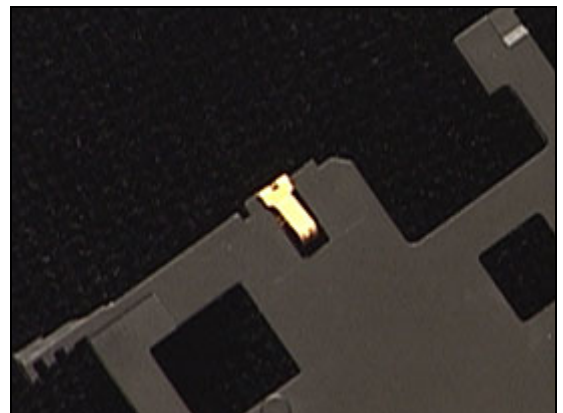
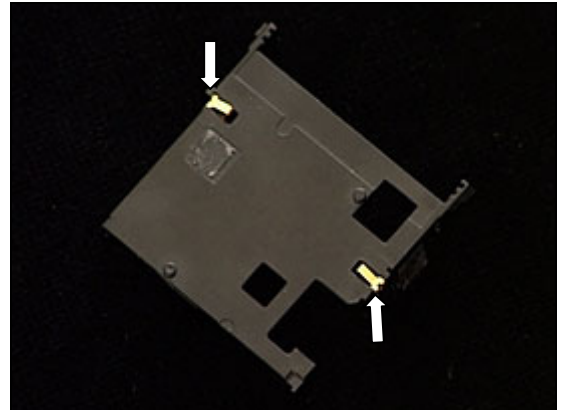
*Follow the 2.1.1 – 2.1.5 Disassembly instructions!
Separate the key foil from the plastic carrier as described in
section 3.24!*

The plastic carrier has got two *ground springs*.

Remove the *ground springs* with the tweezers and your
fingers.

Install the new *ground springs* as shown in picture using the
tweezers and your fingers.

*Reassemble the plastic carrier and key foil as described in
section 3.24!
Follow the 4.1.4 – 4.1.7 Reassembly instructions!*

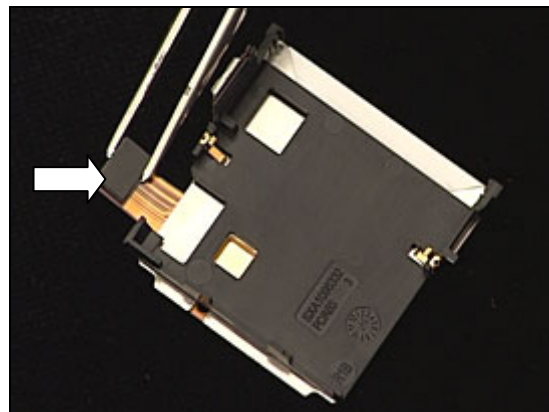


3.27 Spacer, board-to-board connector

Follow the 2.1.1 – 2.1.5 Disassembly instructions!

Remove the *spacer* with the tweezers and your fingers.
Attach a new spacer with the tweezers and your fingers.

Follow the 4.1.3 – 4.1.7 Reassembly instructions!



3.28 Liquid Intrusion Indicator

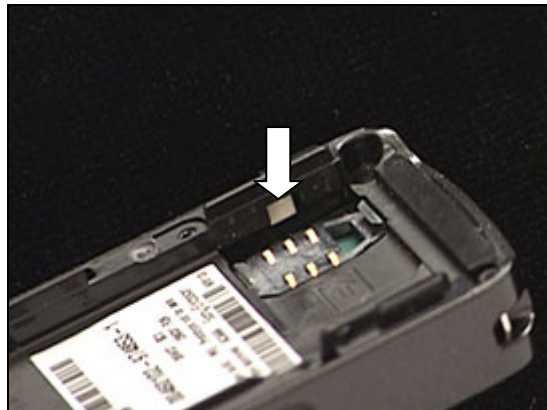
Follow the 2.1.1 Disassembly instructions!

Remove the *liquid intrusion indicator* with a dentist hook.

CLEAN THE FRAME SURFACE WITH ISOPROPYL ALCOHOL!

Attach a new *liquid intrusion indicator*.

Follow the 4.1.7 Reassembly instructions!



3.29 Memory Card Rubber Lid

Remove the *memory card rubber lid* with your fingers.
Install a new *memory card rubber lid* with the tweezers and your fingers.



3.30 Plug, external antenna

Follow the 2.1.1 – 2.1.2 Disassembly instructions!

Remove the *plug* by pressing from the inside of the antenna cover with the tweezers.

THE PLUG CAN BE REMOVED FROM THE OUTSIDE WITH A DENTIST HOOK BUT THIS CAN RESULT IN SCRATCHES ON THE ANTENNA COVER AND/OR THE PLUG.

Place the *plug* as shown and press it down with your finger.

Follow the 4.1.6 – 4.1.7 Reassembly instructions!



3.31 Label

Follow the 2.1.1 – 2.1.2 Disassembly instructions!

Read the old label and/or write the information into the “Label make” program before removal

Note the position of the label before removal

Heat up the label by using hot air, if needed.

Carefully remove the label without causing scratches

If there still are residues, clean the surface with isopropyl alcohol

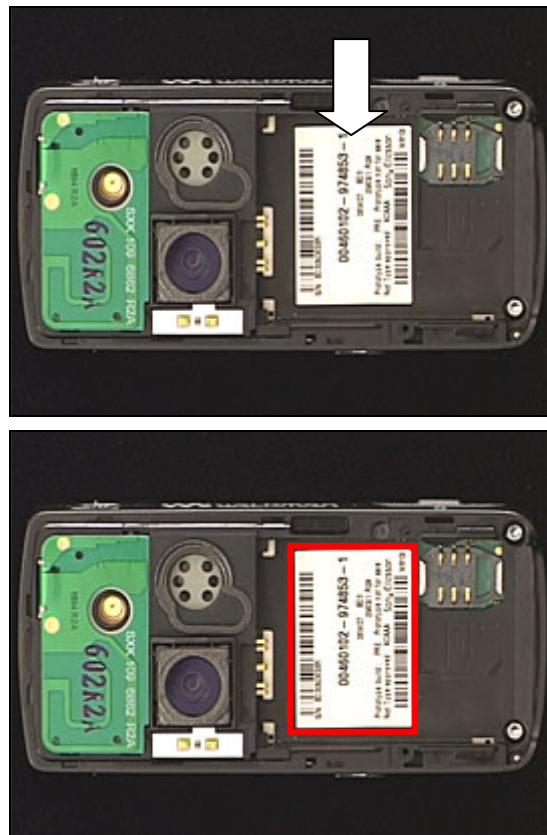
Check that the proper label format is loaded in the Zebra printer.

Write a new label by using the program “Label make” and check that the printing is OK.

Take the new label and place it onto the frame as in the adjacent picture.

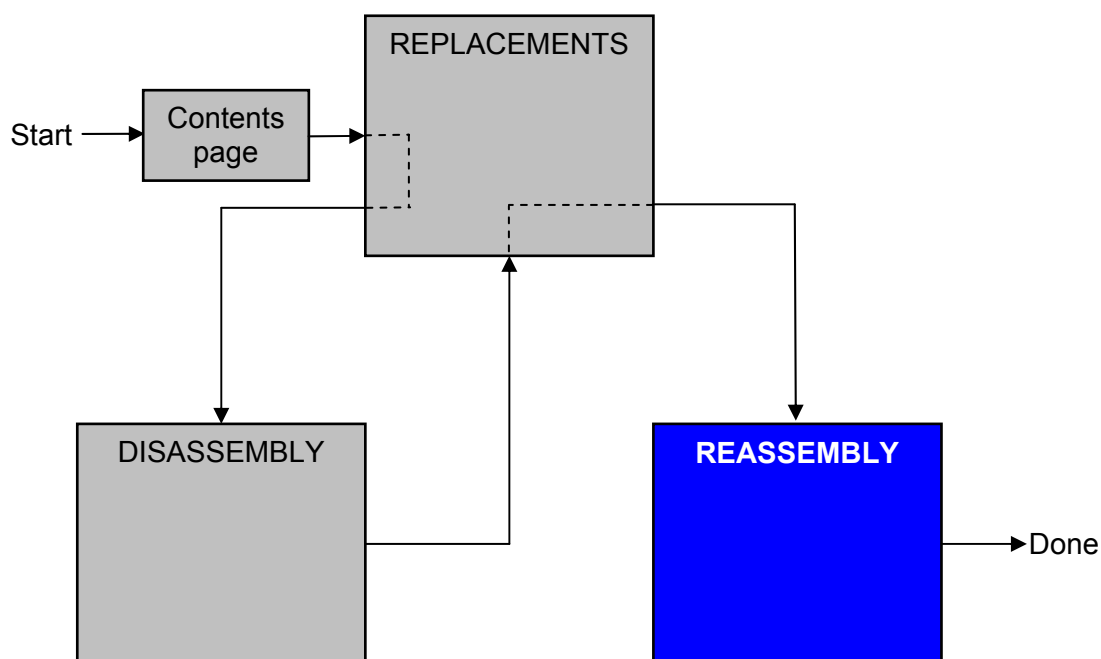
ONE LABEL ONLY IS ALLOWED!

Follow the 4.1.6 – 4.1.7 Reassembly instructions!



4 Reassembly

After replacing a part being listed in *Replacements*, the instruction of that section usually ends by directing you to this *Reassembly* section with a specification of the instructions you have to carry out in order to reassemble the phone.



4.1 Overview

The reassembly is done in the following sequence:

1. PBA
2. LCD
3. Plastic Carrier & Key Foil ass'y
4. Keypad
5. Front
6. Antenna Cover
7. Battery (a) and Battery Cover (b)



4.1.1 PBA

Gently slide the camera flex film trough the hole (1) of the *PBA*.

DO NOT RAISE THE PBA TOO MUCH UPWARDS!

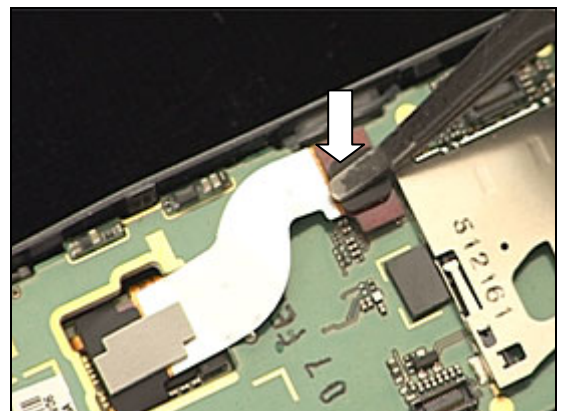
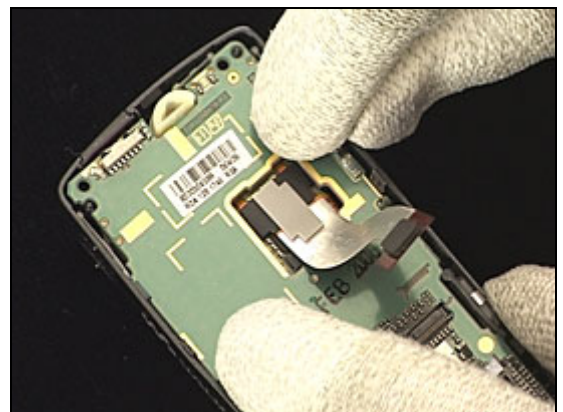
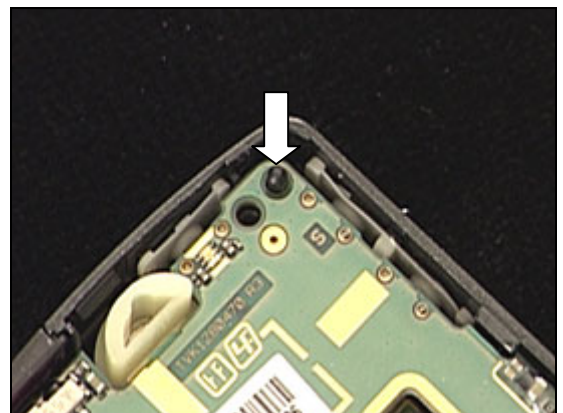
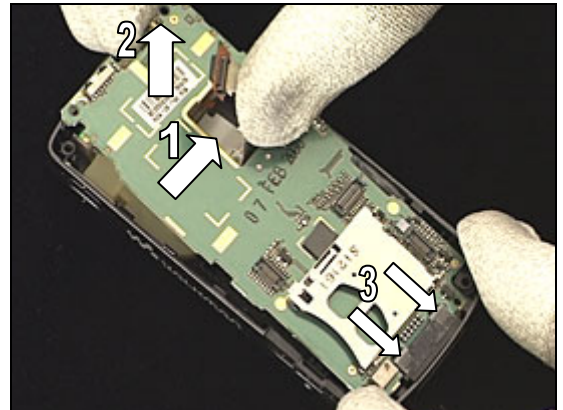
Raise the *PBA* at the top (2) and press it underneath the two supports (3).

Gently lower the *PBA* while checking that the camera flex film is smoothly passing through the hole without getting stuck.

Place the *PBA* in the frame so that the frame's guiding pin enters the *PBA* guiding hole.

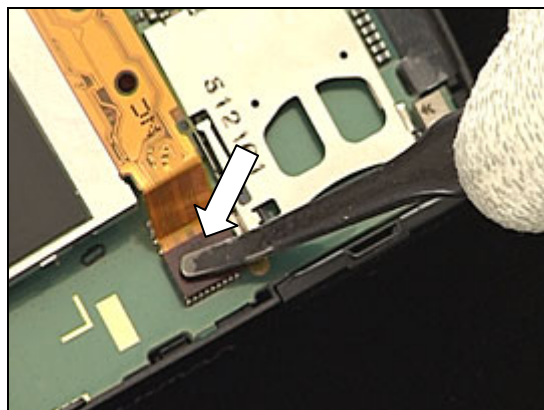
Snap the *PBA* onto the frame by pressing at these two spots.

Connect the lower camera flex film board-to-board connector to the *PBA* with your fingers or with the 'flex film assembly tool'.

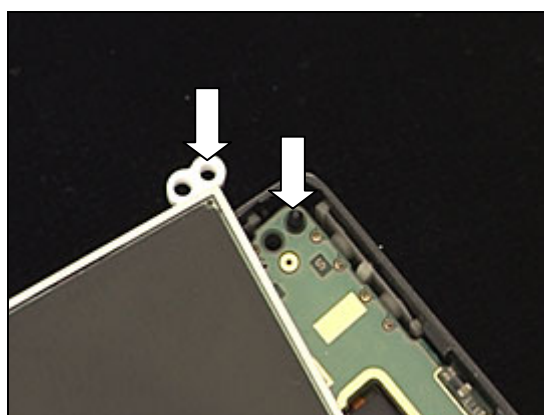


4.1.2 LCD

Connect the flex film board-to-board connector to the PBA with your fingers or with the 'flex film assembly tool'.



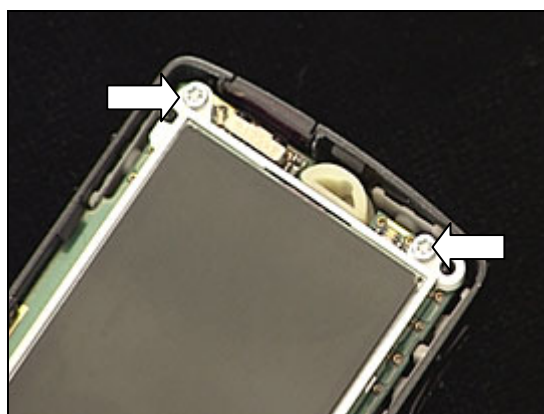
There is a guiding peg on the frame and a guiding hole on the *LCD*.



Place the *LCD* on the PBA like this.

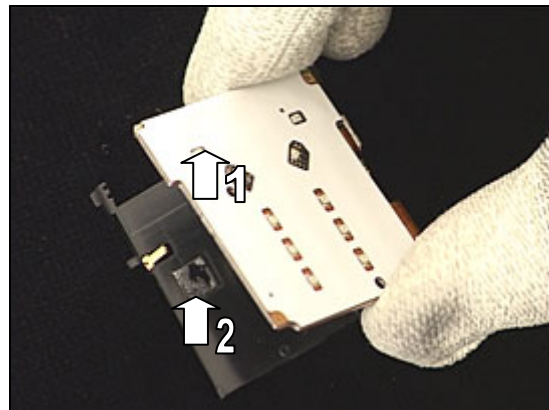


Apply 18 Ncm torque to tighten two **new** T6 screws.

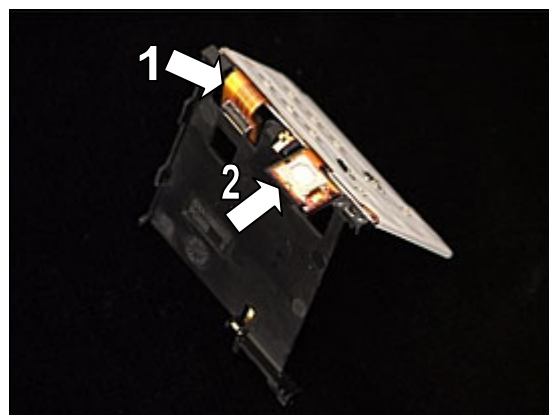


4.1.3 Plastic Carrier & Key Foil ass'y

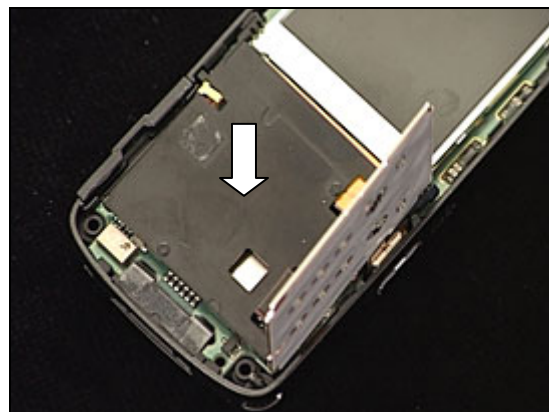
Separate the *key foil* (1) from the *plastic carrier* by loosening it from the adhesive (2).



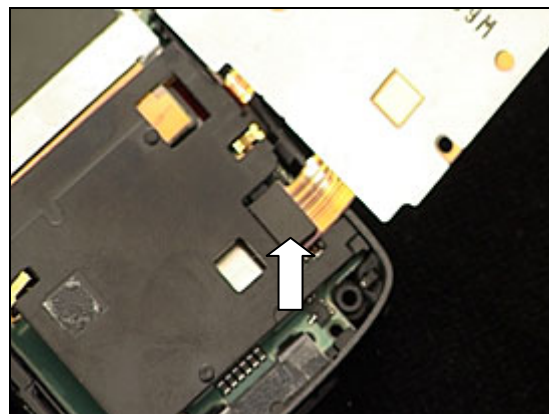
GENTLY BEND THE KEY FOIL FLEX FILM (1) UNDERNEATH THE PLASTIC CARRIER TO PREVENT IT FROM GETTING SQUEEZED! BE CAREFUL NOT TO DAMAGE THE KEY SWITCH FLEX FILM (2) WHEN SLIDING THE PLASTIC CARRIER INTO THE FRAME!



Press and snap the *plastic carrier* onto the frame.

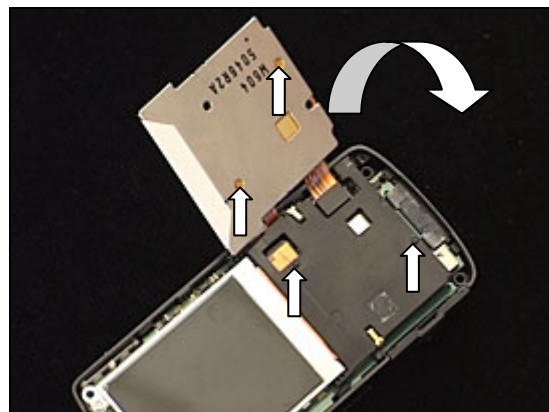


Connect the key foil flex film board-to-board connector to the PBA with your fingers or with the 'flex film assembly tool'.

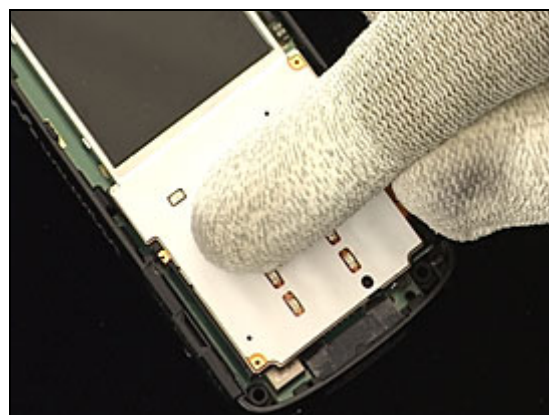


Plastic Carrier & Key Foil ass'y continued

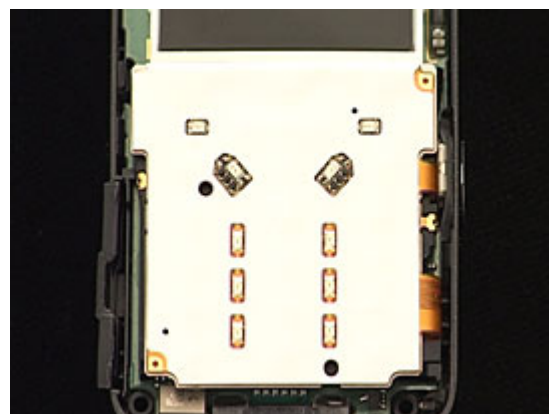
Gently turn the *key foil* on top of the *plastic carrier* so that the *plastic carrier's* guiding pins will fit into the *key foil's* guiding holes.



Press on the *key foil* to make it adhere to the *plastic carrier*.

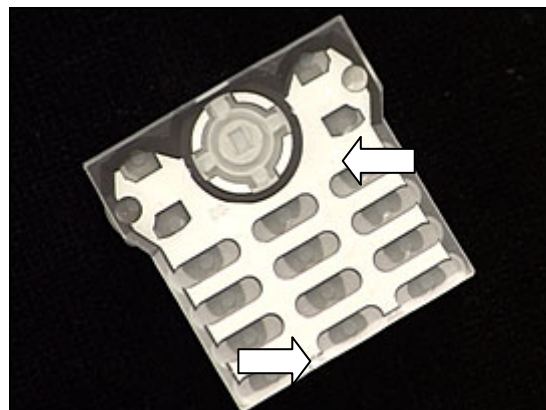


The *plastic carrier & key foil* in a properly mounted position.

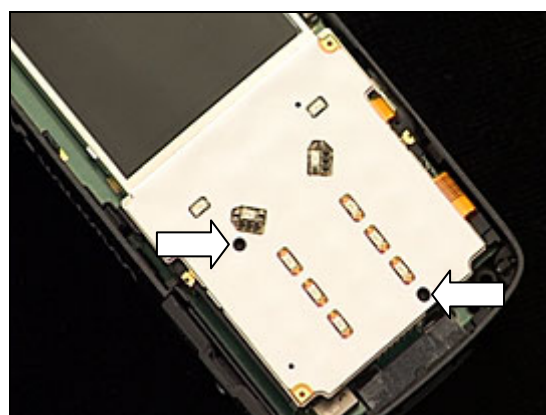


4.1.4 Keypad

There are two guiding pegs on the *keypad* ...



to be placed into two holes on the key foil ...



when the *keypad* is properly installed.



4.1.5 Front

MAKE SURE THE KEYBOARD IS IN ITS PROPER POSITION!

Place the *front* at the top over the frame and press it forward until it snaps onto the top of the frame.



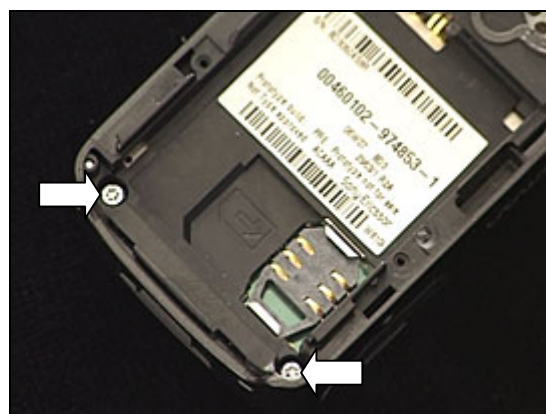
Press like this to snap the *front* and frame together.



Check that there are no gaps along the sides!
If this is the case, gently press the two halves together with your fingers!

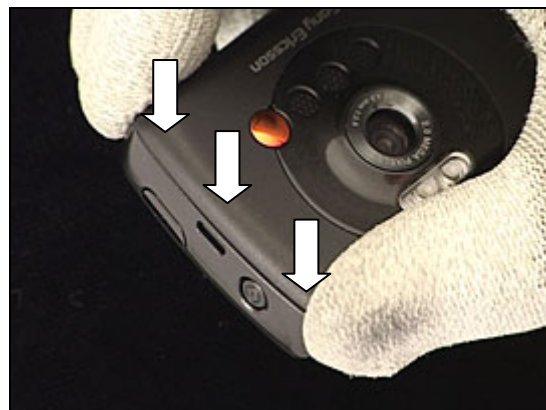


Apply 18 Ncm torque to tighten two **new** screws using the T6 bit.



4.1.6 Antenna Cover

Press the *antenna cover* onto the frame at the top ...



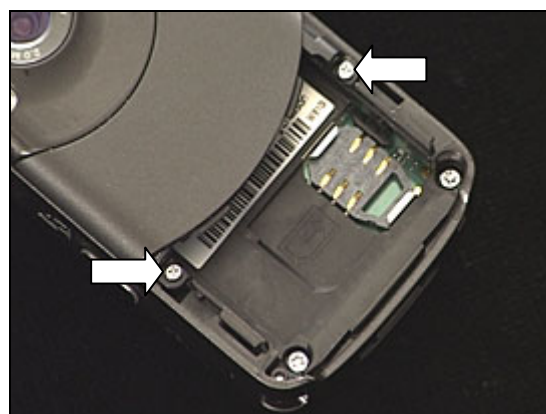
and press like this to snap the sides together.



Check that there no gaps along the sides!
If this is the case, gently press the two halves together with your fingers!



Apply 9 Ncm (± 2 Ncm) torque to tighten two **new** screws by using the Phillips bit.



4.1.7 Battery & Battery Cover

Slide the *battery* into its compartment.



Press inwards (1) and at the same time downwards (2) to secure the *battery* position.



Place the *battery cover* at the bottom of the phone ...



and slide it towards the top of the phone until it is latched.



5 Revision history

Rev.	Date	Changes / Comments
A	2006-03-22	Initial release
B	2007-01-11	Added Camera Glas in replacement