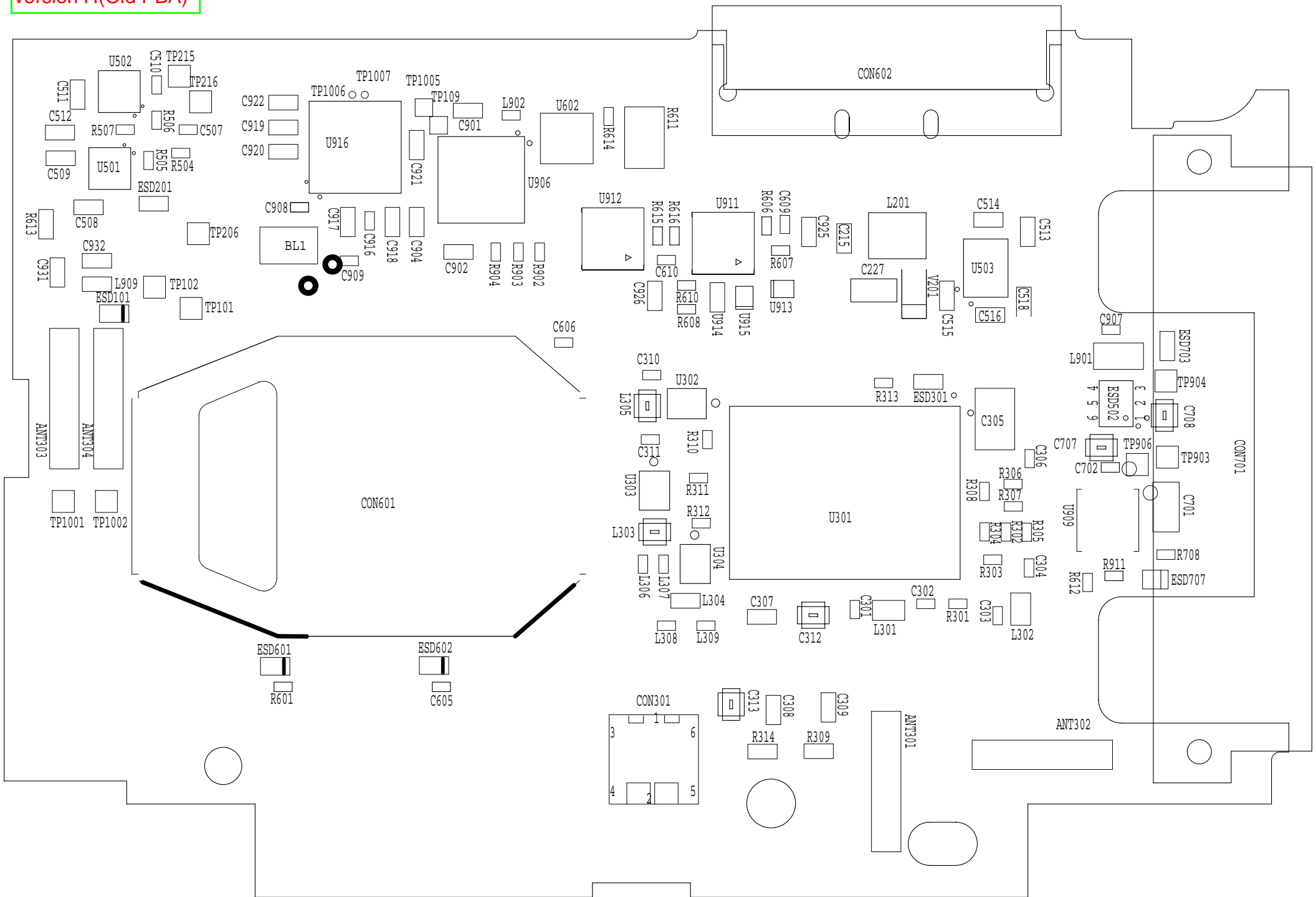
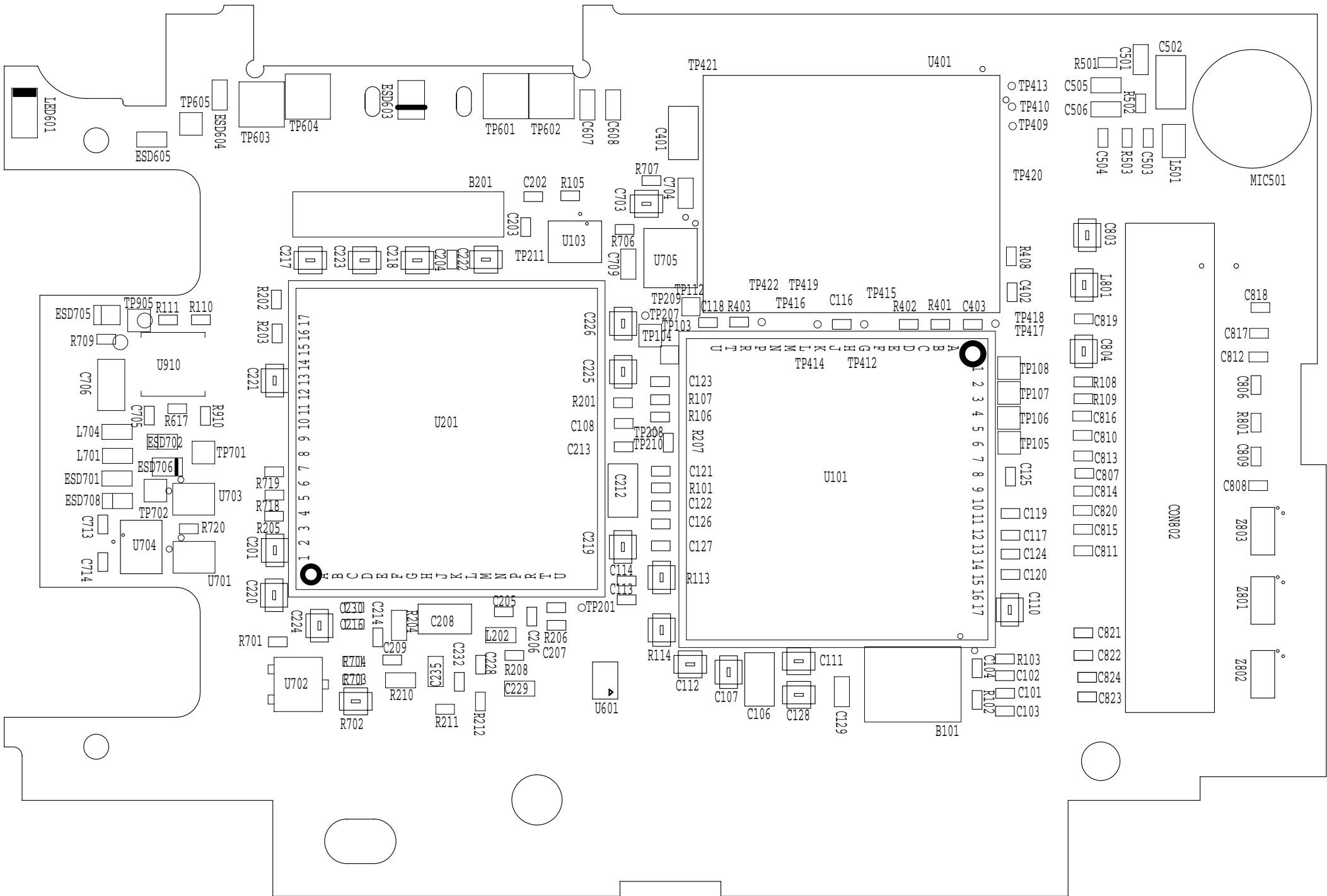
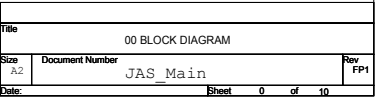
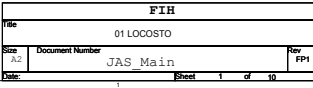


version H(Old PBA)

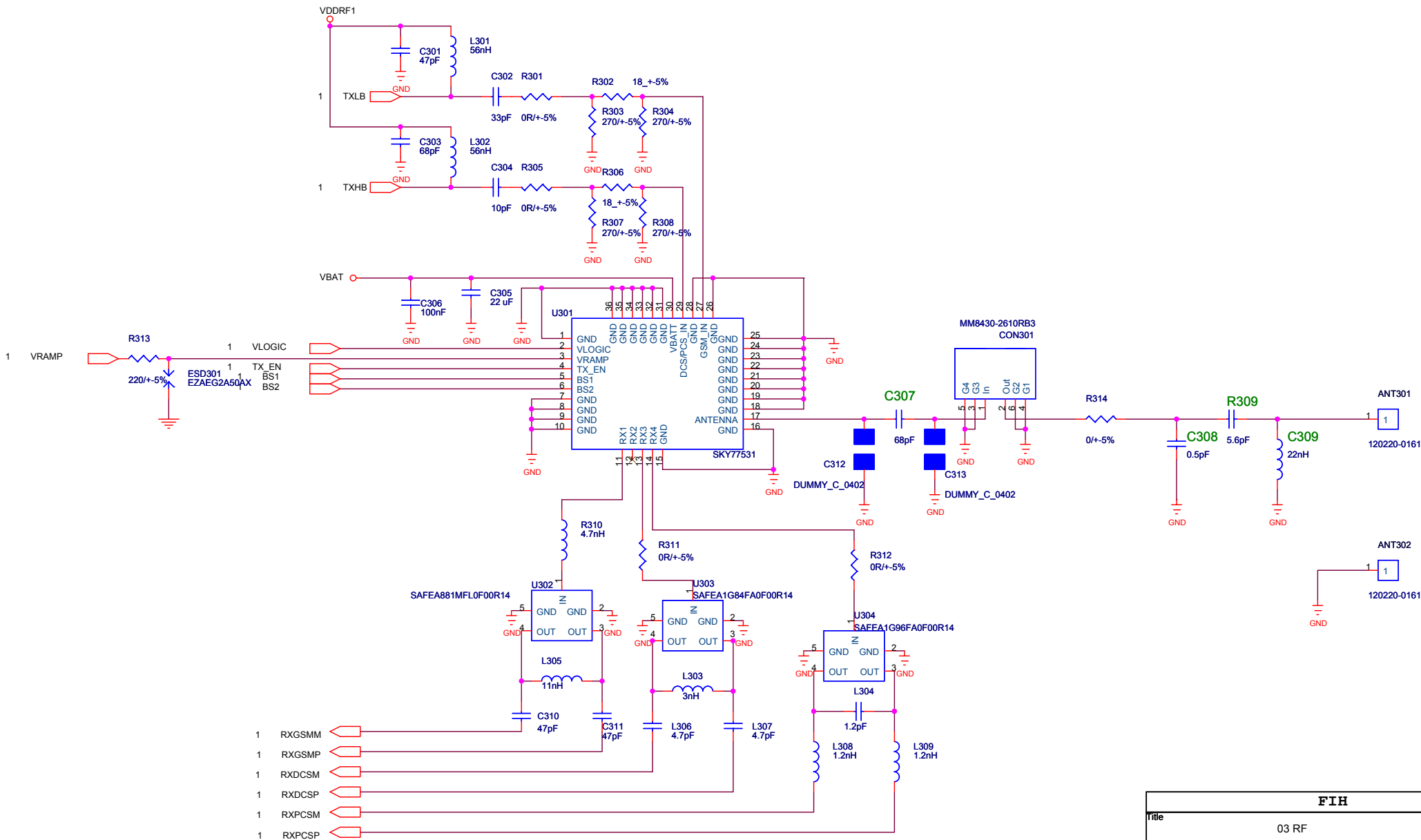








1 VDDRF1
2,5,6,7,10 VBAT



FIH		
Title	03 RF	
Size	Document Number	Rev
A2	JAS_Main	FP1
Date:	Sheet	3 of 10

VMEM_V18 VMEM_V18 1,2

Intel

U401

PF38F4060M0Y3CE

Intel Memory
256FLASH +128PSRAM
PF38F4060M0Y3CE

VMEM_V18

C401
4.7uF

C402
100nF

C403
100nF

VMEM_V18

TP412

TP413

TP422 TP418 TP421 TP417 TP416 TP410 TP419 TP420 TP415 TP414 TP409

WAITn
ADVn
CS3n
CLKBURST
OEn
RSTEXTn
WEn
ADR_23_CRE
CS0n
R-UB
R-LB

R408
0R/+5%

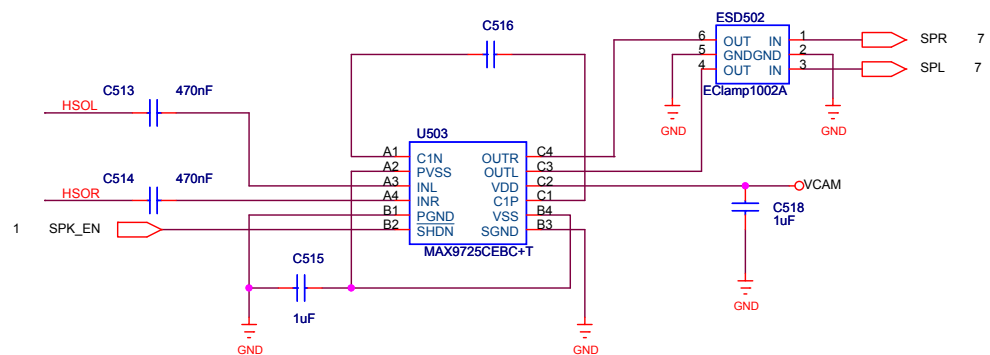
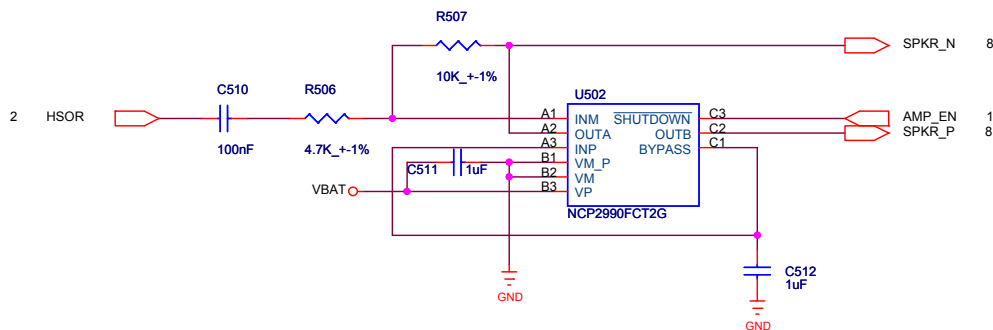
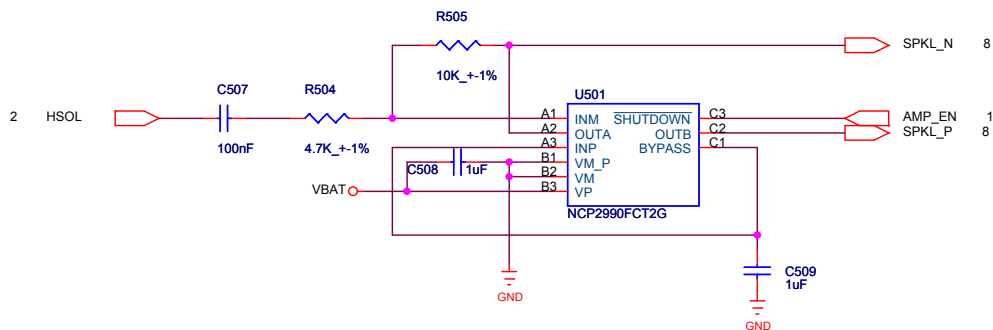
R401
10K_+1%

R402
DUMMY_R_0201

R403
100K_+1%

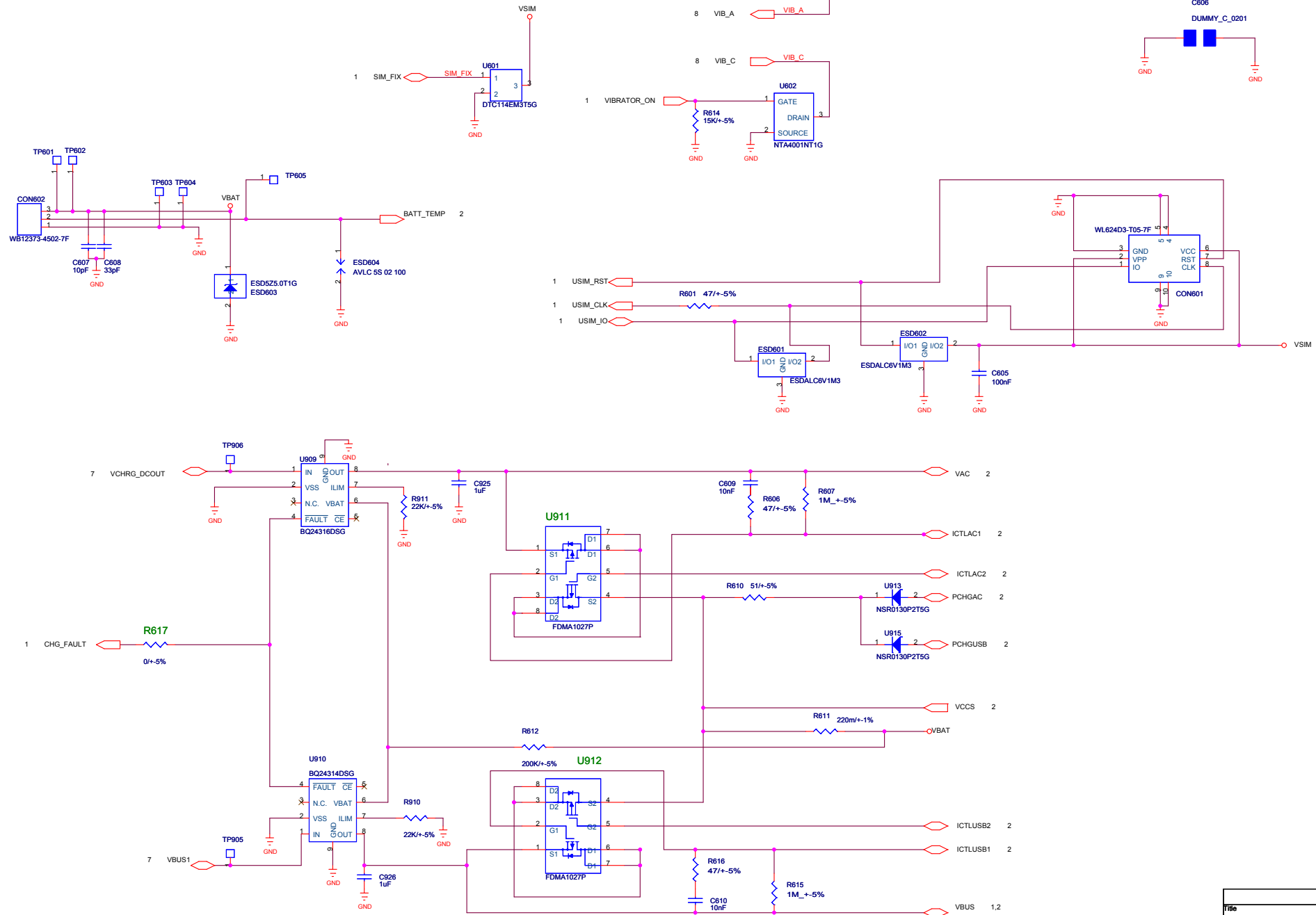
FIH

Title				
04 Memory				
Size	Document Number			Rev
A2	JAS_Main			FP1
Date:		Sheet	4	of 10



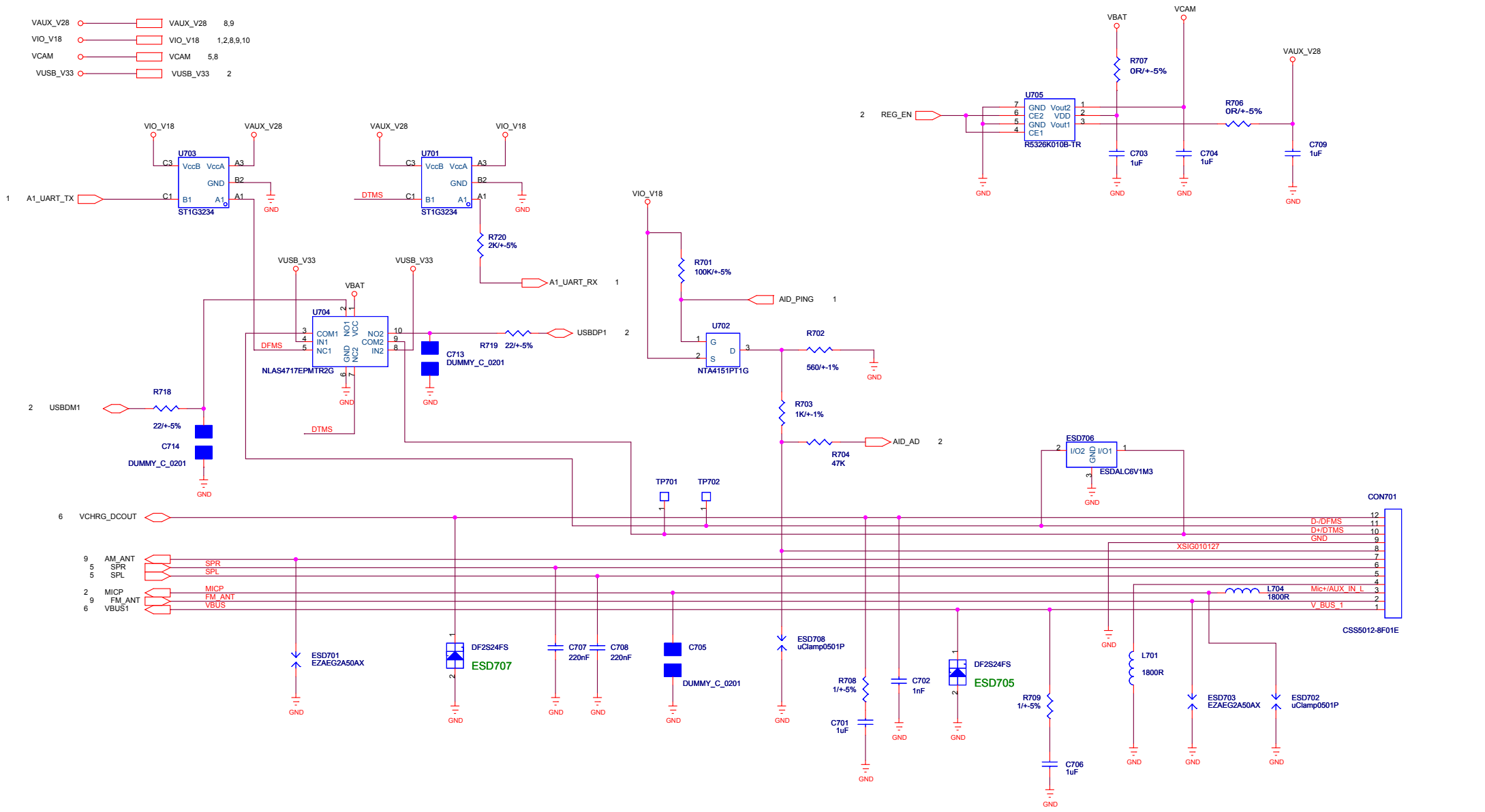
FIH			
Title 05 AUDIO			
Size A2	Document Number JAS_Main		Rev FP
Date:	Sheet	5 of 10	

VAUX_V28 ○ VAUX_V28 7,8,9
VIO_V18 ○ VIO_V18 1,2,7,8,9,10
VSIM ○ VSIM 1,2
VBAT ○ VBAT 2,3,5,7,10



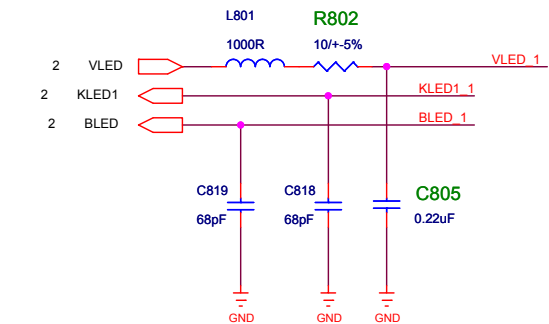
FIH		
Title		
06 CHARGER & I/O		
Size	Document Number	Rev
A2	JAS_Main	FP1
Date:	Sheet	6 of 10

VAUX_V28 VAUX_V28 8,9
VIO_V18 VIO_V18 1,2,8,9,10
VCAM VCAM 5,8
VUSB_V33 VUSB_V33 2

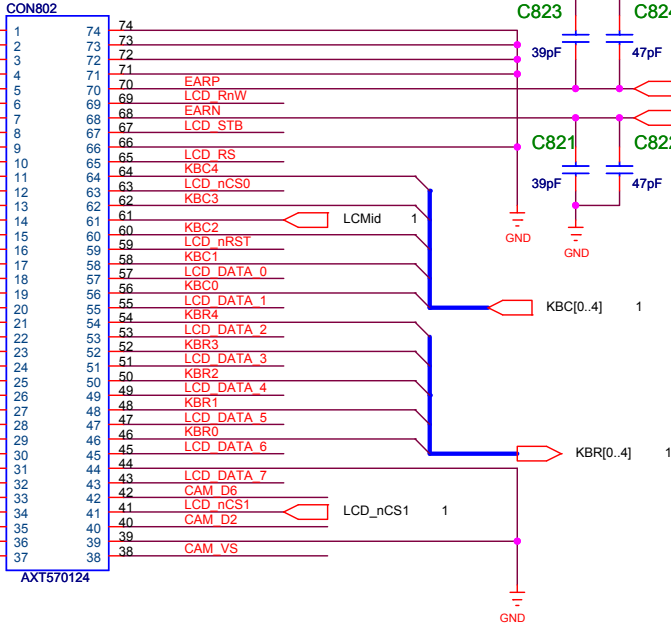
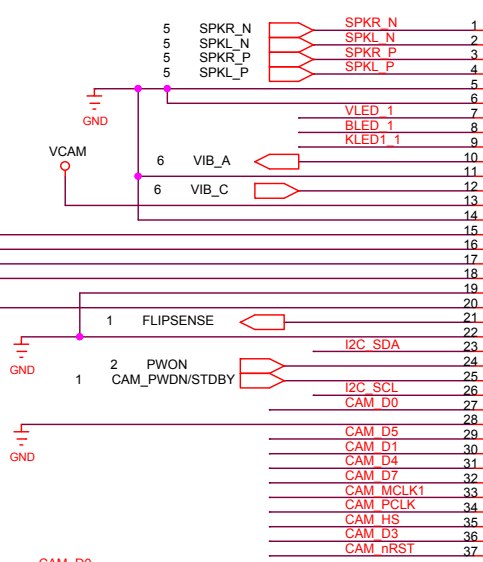
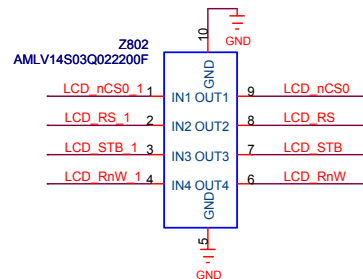
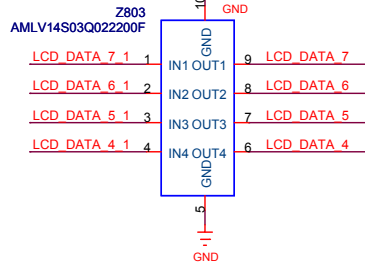
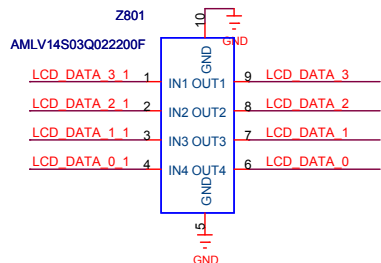
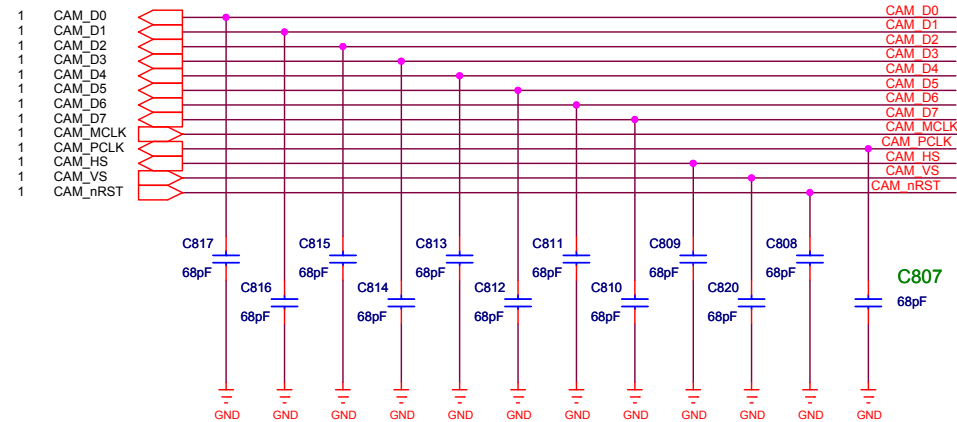


FIH			
Title 07 A1 CONNECTOR			
Size A4	Document Number JAS_Main		Rev FP1
Date:		Sheet 7 of 10	

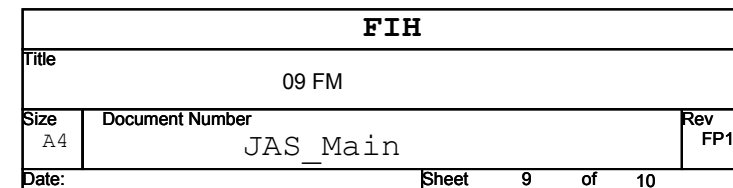
VIO_V18 1.2,7,9,10
VAUX_V28 7,9
VCAM 5,7



1,9 I2C_SDA
1,9 I2C_SCL

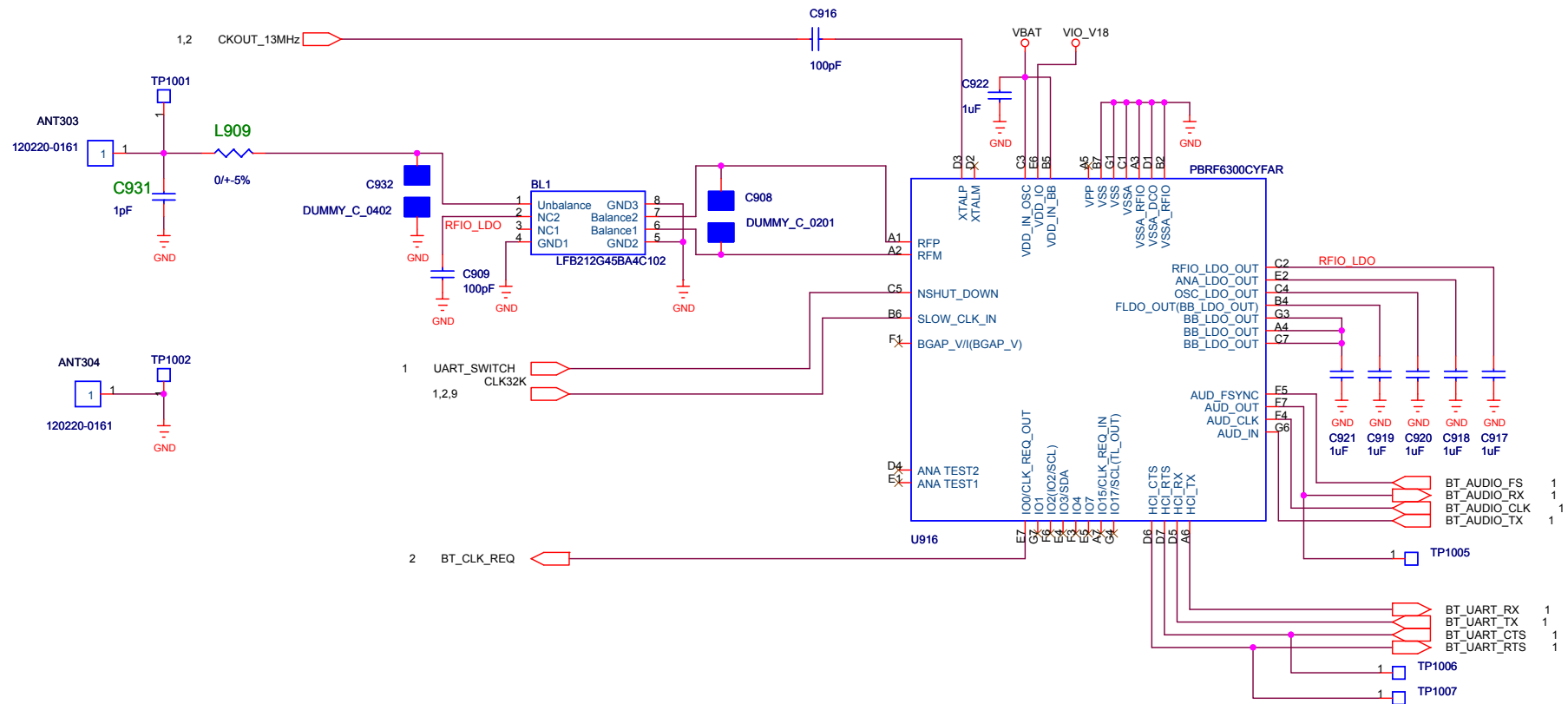


LCD_DATA_7_1
LCD_DATA_6_1
LCD_DATA_5_1
LCD_DATA_4_1
LCD_DATA_3_1
LCD_DATA_2_1
LCD_DATA_1_1
LCD_DATA_0_1
LCD_RS_1
LCD_STB_1
LCD_RnW_1
LCD_nRST
LCD_nCS0_1



1,2,7,8,9 VIO_V18

2,3,5,6,7 VBAT



FIH		
Title		
10 BT		
Size	Document Number	Rev
B	JAS_Main	FP1
Date:	Sheet	10 of 10