

# Working Instruction, Mechanical

Applicable for Z300

## CONTENTS

|          |  |           |
|----------|--|-----------|
| <b>1</b> | <b>Read this first!</b> .....          | <b>2</b>  |
| <b>2</b> | <b>Introduction</b> .....              | <b>3</b>  |
| <b>3</b> | <b>Repair actions</b> .....            | <b>4</b>  |
| 3.1      | Battery Cover & Battery .....          | 5         |
| 3.2      | Lower Rear Cover Ass'y.....            | 7         |
| 3.3      | PCB .....                              | 10        |
| 3.4      | Keypad .....                           | 12        |
| 3.5      | Lower Front Cover Ass'y .....          | 13        |
| 3.6      | Dummy Hinge & Flex Film.....           | 15        |
| 3.7      | Exchange Cover Ass'y .....             | 17        |
| 3.8      | Upper Rear Cover Ass'y.....            | 18        |
| 3.9      | LCD Flex Film Ass'y .....              | 20        |
| 3.10     | Main LCD Ass'y .....                   | 24        |
| 3.11     | Speaker Dust Net .....                 | 25        |
| 3.12     | Loudspeaker Ass'y .....                | 26        |
| 3.13     | Flex Film w/ Carrier .....             | 27        |
| 3.14     | Liquid Intrusion Indicator .....       | 29        |
| 3.15     | Side Key Gasket.....                   | 30        |
| 3.16     | Dome Switch Foil .....                 | 31        |
| 3.17     | Tape Shield Can.....                   | 32        |
| 3.18     | Name Plate.....                        | 33        |
| 3.19     | Microphone Ass'y .....                 | 34        |
| 3.20     | Rubber Holder for Exchange Cover ..... | 35        |
| 3.21     | Hinge Unit.....                        | 36        |
| 3.22     | Vibrator.....                          | 37        |
| 3.23     | Earphone & Earphone Gasket .....       | 38        |
| 3.24     | Magnet .....                           | 39        |
| <b>4</b> | <b>Label</b> .....                     | <b>40</b> |
| <b>5</b> | <b>Revision history</b> .....          | <b>41</b> |

# 1 Read this first!

After downloading and extracting the Working Instruction zip file, you will get access to this document.

To watch the repair movies, Flash Player version 6 or later must be installed on your computer.

The Flash Player can be downloaded free of charge from [www.adobe.com](http://www.adobe.com).

However, when running the movies on a Windows XP computer with Service Pack 2 installed, the movies become blocked each time you try to access them and will not be launched until you have accepted to unblock the content and then again confirmed the action.

To avoid this, you can adjust your computer's security settings in the following way:

- open Internet Explorer
- click Tools / Internet Options / Advanced, and scroll down until you find Security
- check the box with the text 'Allow active content to run in files on My Computer'

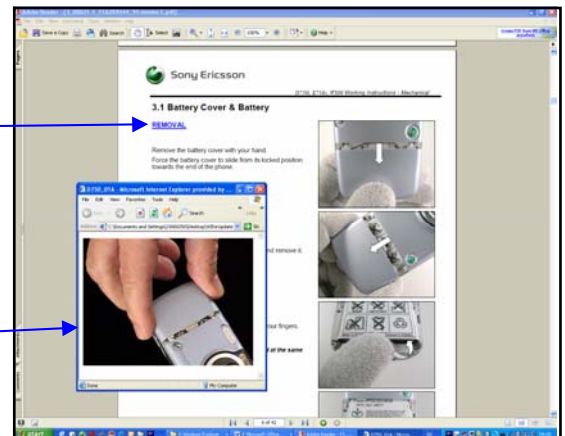
NOTE!

Do not change this setting unless you are aware of how this will affect the security of your computer!

Some of the Removal and Assembly headings have got blue colour and are underlined.

By clicking on such a heading, an Internet Explorer window opens, showing a video clip of the removal or assembly instruction

After having the first movie window opened, you should adjust the size of the Internet Explorer window until it looks like the adjacent picture example.



After reading section 2 'Introduction' and the start of section 3 'Repair Actions', do as follows when a mechanical part needs to be replaced:

- Search for the part name on the contents page and go to the page number where the instruction is found
- Disassemble the phone as far as needed by moving to the instructions stated as e.g. *Follow the Removal instructions of sections 3.1 – 3.6*
- Carry out the actual repair action as described
- Assemble the phone by moving to the instructions stated as e.g. *Follow the Assembly instructions of sections 3.6 – 3.1 (pls. note the reverse order)*

## 2 Introduction

### SPECIAL TOOLS

- NTZ 122 459 Torque screwdriver (or equivalent)
- NTZ 122 521 Flex film assembly tool
- NTZ 112 521 Front Opening Tool



### STANDARD TOOLS

The following tools have to be locally purchased:

- Dentist Hook
- Blunt pair of tweezers
- Small screwdriver
- Flat nose pliers
- Guitar pick
- Torx bit no 5



### ESD EQUIPMENT

Protect the phone from ESD damages whenever it has been opened by using:

- ESD-gloves (cotton gloves)
- ESD-wristband

### CAUTIONS

- Keep all contact surfaces clean, no dirt or hand grease!
- Be careful when using tools like the dentist hook, tweezers, opening tools, guitar pick etc. to avoid scratches or damages to the exterior and interior parts of the phone!
- Be careful not to damage the contact springs on parts like the vibrator!
- Remember to remove the protection foils on new parts such as the front case and the LCD!
- Never touch the display glass!
- Use air blow equipment to keep the front window and display module dust free!

### ADHESIVES

Use a dentist hook or a blunt pair of tweezers to remove old adhesives.

If necessary, clean the surface with isopropyl alcohol before attaching new adhesives.

### 3 Repair actions

**Z300**



#### **PRECAUTIONARY ACTIONS**

Switch of the phone.



### 3.1 Battery Cover & Battery

#### REMOVAL

Use your thumbs and start pulling the Battery Cover downwards.

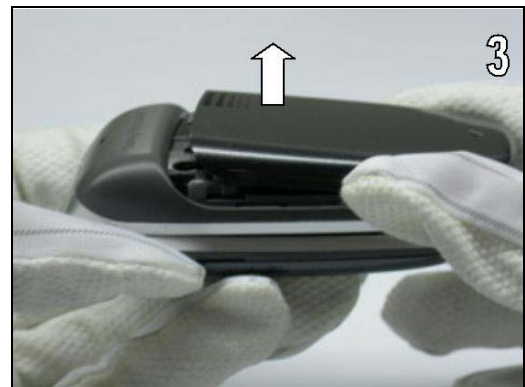


Stop pulling the Battery Cover downwards when you feel that it can not travel any further.

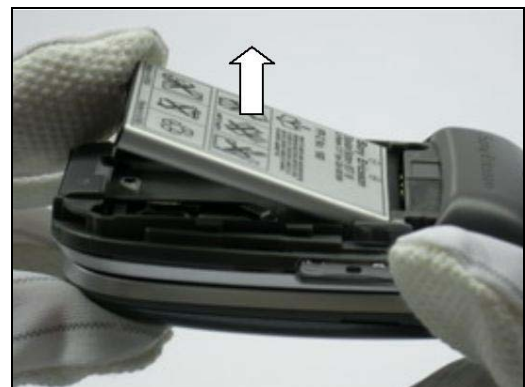
The gap between the Lower Rear Cover Ass'y and the Battery Cover shall be the same as shown in the picture.



Use your thumbs to grab the Battery Cover and remove it.



Use your fingers to remove the Battery.





## Battery Cover & Battery *continued*

### INSTALLATION

Use your fingers to install the Battery.



Use your fingers to position the Battery Cover.



**THE GAP BETWEEN THE LOWER REAR COVER ASS'Y AND THE BATTERY COVER SHALL BE THE SAME AS SHOWN IN THE PICTURE!**



Use your fingers and pull the Battery Cover upwards to install it.



## 3.2 Lower Rear Cover Ass'y

### REMOVAL

Follow the Removal instructions of sections 3.1.

Use Torx bit no 5 to remove the four screws.

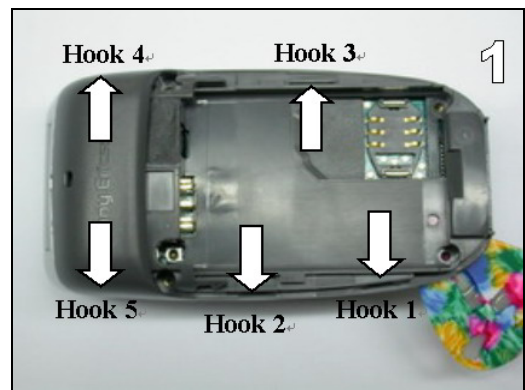
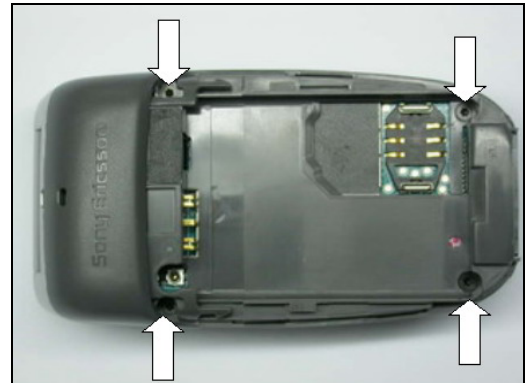
**THERE ARE FIVE SNAP HOOKS HOLDING THE LOWER FRONT ASS'Y!**

**BE CAREFUL NOT TO DAMAGE THE LOWER FRONT ASS'Y DURING THIS PROCEDURE!**

Position the guitar pick between the Lower Rear Cover Ass'y and the Lower Front Cover Ass'y.

**BE CAREFUL NOT TO DAMAGE THE LOWER FRONT ASS'Y DURING THIS PROCEDURE!**

Slide the guitar pick along each sides of the phone to release the Lower Rear Cover Ass'y from the Lower Front Cover Ass'y.



## **Lower Rear Cover Ass'y *continued***

***BE CAREFUL NOT TO DAMAGE THE LOWER FRONT COVER ASS'Y DURING THIS PROCEDURE!***

User your fingers to pull the Lower Front Cover and remove it.





## Lower Rear Cover Ass'y continued

### INSTALLATION

**BE CAREFUL NOT TO DAMAGE THE LOWER FRONT COVER ASS'Y, BATTERY CONNECTOR, ANTENNA CONNECOTR AND VOLUME BUTTON DURING THIS PROCEDURE!**

Position the Lower Rear Cover Ass'y into the Lower Front Cover Ass'y.

#### **THE LOWER FRONT COVER ASS'Y HAS SNAP HOOKS!**

Use your fingers to press on each side of the Lower Rear Cover Ass'y to snap it onto the Lower Front Cover Ass'y.

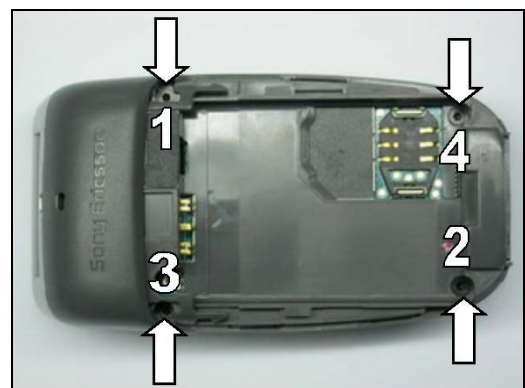
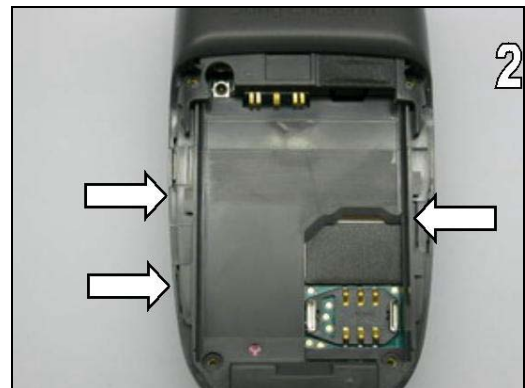
**MAKE SURE THAT THE VOLUME BUTTON IS CORRECTLY POSITIONED!**

#### **USE NEW SCREWS!**

#### **THE SCREWS SHALL BE INSTALLED IN NUMERICAL ORDER!**

Use Torx bit no 5 with torque  $11 \pm 6\%$  Ncm to tighten the 4 screws.

Follow the Installation instructions of sections 3.1.

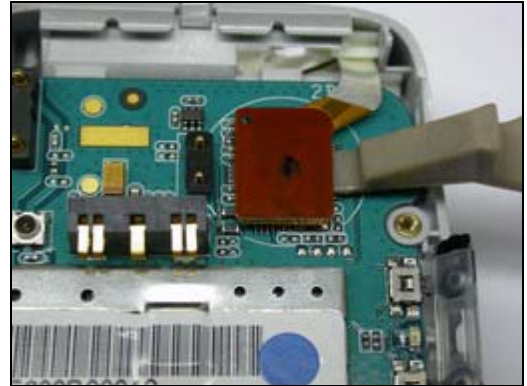


### 3.3 PCB

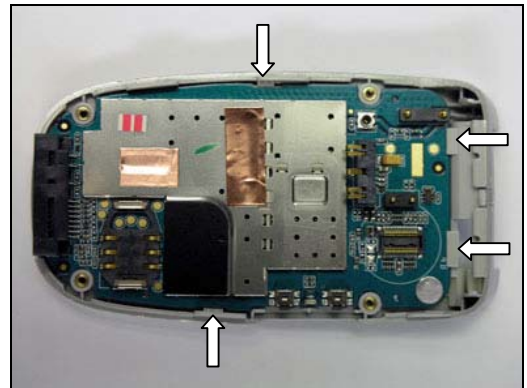
#### REMOVAL

Follow the Removal instructions of sections 3.1 – 3.2.

Use a front opening tool to disconnect the Board-to-Board Connector.

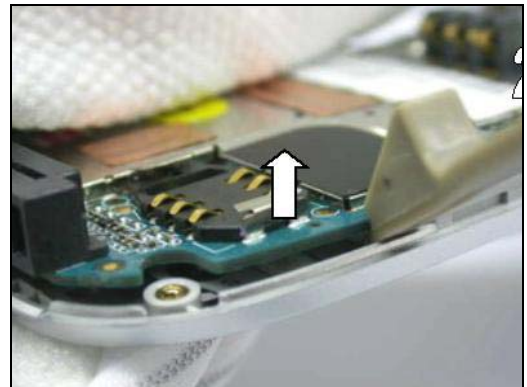


**THE LOW FRONT COVER ASS'Y HAS SNAP HOOKS!**



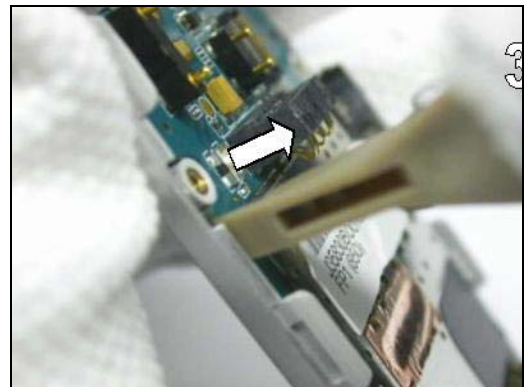
Position the front opening tool below the Lower Front Cover Ass'y right snap hook.

Bend the front opening tool outwards to separate the lower part of the PCB from the Lower Front Cover Ass'y.



Position the front opening tool above the Lower Front Cover Ass'y left snap hook.

Bend the front opening tool outwards to separate the lower part of the PCB from the Lower Front Cover Ass'y and remove the PCB.

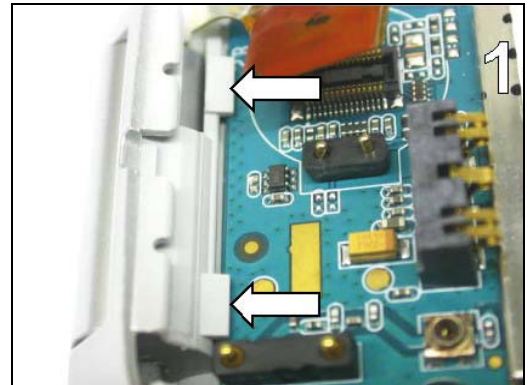


## PCB continued

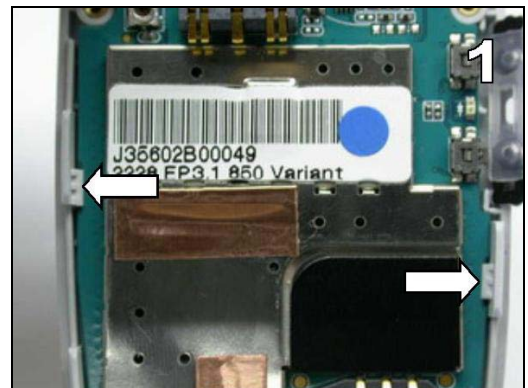
### INSTALLATION

**THE LOWER FRONT COVER ASS'Y HAS SNAP HOOKS!**

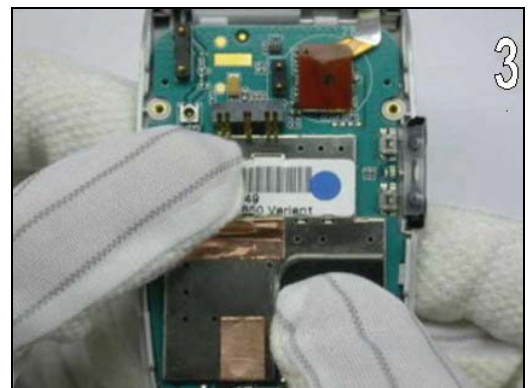
Position the PCB into the Cabinet Lower Front Ass'y.



**THE LOWER FRONT COVER ASS'Y HAS SNAP HOOKS!**

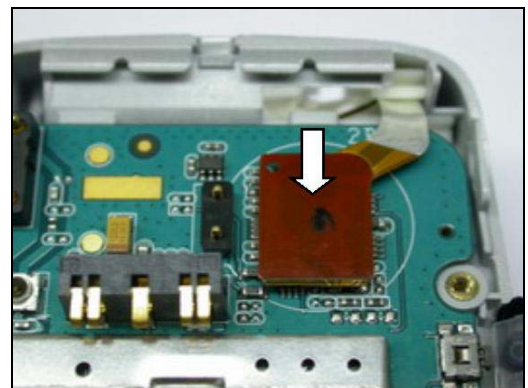


Use your thumbs to press the PCB into the Cabinet Lower Front Ass'y to snap them together.



Use your fingers to connect the FPC to the Board-to-Board Connector.

*Follow the Installation instructions of sections 3.2 – 3.1.*



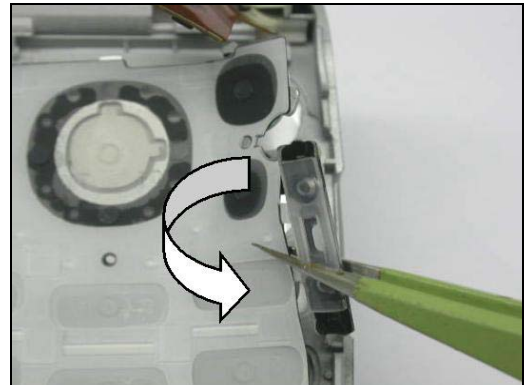
## 3.4 Keypad

### REMOVAL

*Follow the Removal instructions of sections 3.1 – 3.3.*

**THE VOLUME BUTTON IS ATTACHED TO THE KEYPAD!**

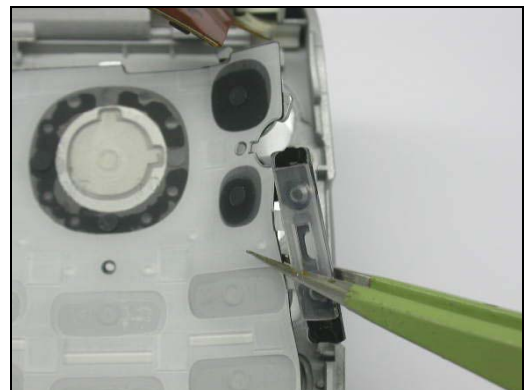
Use a pair of tweezers to remove the Keypad from the Low Front Cover Ass'y.



### INSTALLATION

Use a pair of tweezers to position the Keypad into the Low Front Cover Ass'y.

*Follow the Installation instructions of sections 3.3 – 3.1.*





### 3.5 Lower Front Cover Ass'y

#### REMOVAL

Follow the Removal instructions of sections 3.1 – 3.4.

Position the screwdriver.

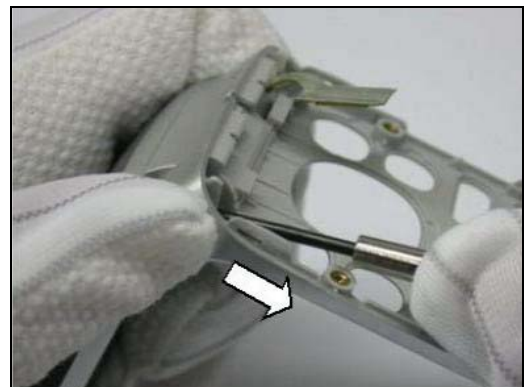
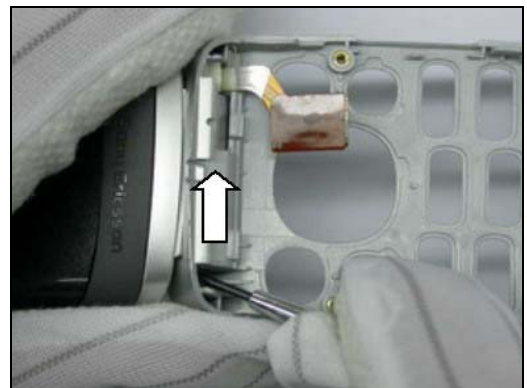
Push the Hinge upwards.

**BE CAREFUL NOT TO DAMAGE THE LOWER FRONT COVER ASS'Y DURING THIS PROCEDURE!**

Keep pushing the Hinge upwards and in the same time use your fingers to push down the Lower Front Cover Ass'y.

**BE CAREFUL NOT TO DAMAGE THE FLEX FILM DURING THIS PROCEDURE!**

Slide the Flex Film through the Hinge hole and separate the Lower Front Cover Ass'y from the Upper Rear Cover Assy.



## Lower Front Cover Ass'y *continued*

### INSTALLATION

**BE CAREFUL NOT TO DAMAGE THE FLEX FILM DURING THIS PROCEDURE!**

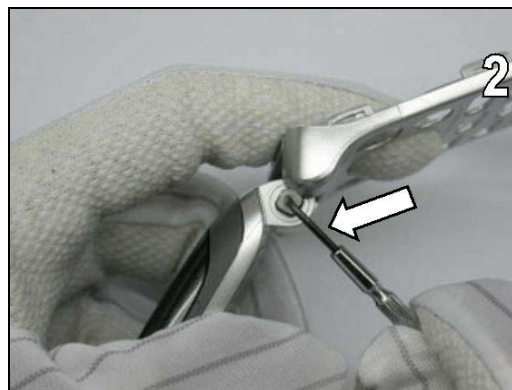
Slide the Flex Film through the Hinge hole.



Position the Lower Front Cover Ass'y onto the hinge by pushing with your fingers at the center of the Lower Front Cover Ass'y top.



Use a screwdriver to push in the Hinge into its cavity and push the Lower Front Cover Ass'y onto the Hinge.  
*Follow the Installation instructions of sections 3.4 – 3.1.*





### 3.6 Dummy Hinge & Flex Film

#### REMOVAL

*Follow the Removal instructions of sections 3.1 – 3.5.*

Position a front opening tool in the gap between the Dummy Hinge and the Lower Front Cover.



***BE CAREFUL NOT TO DAMAGE THE LOWER FRONT COVER DURING THIS PROCEDURE!***

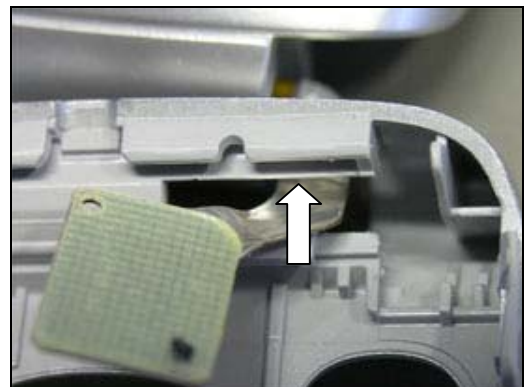
***BE CAREFUL NOT TO DAMAGE THE FLEX FILM /W CARRIER DURING THIS PROCEDURE!***

Push the Dummy Hinge to the left to separate the Dummy Hinge from the Lower Front Cover.



***BE CAREFUL NOT TO DAMAGE THE FLEX FILM /W CARRIER DURING THIS PROCEDURE!***

Slide the Flex Film /w Carrier through the Hinge hole and separate the Upper Front Ass'y from the Lower Front Cover Ass'y.

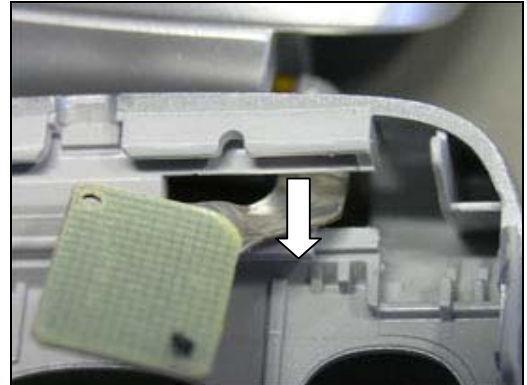


## Dummy Hinge & Flex Film *continued*

### INSTALLATION

**BE CAREFUL NOT TO DAMAGE THE FLEX FILM /W CARRIER DURING THIS PROCEDURE!**

Slide the Flex Film /w Carrier through the Hinge hole.



**BE CAREFUL NOT TO DAMAGE THE FLEX FILM /W CARRIER DURING THIS PROCEDURE!**

Position the Dummy Hinge in the Lower Front Cover Ass'y cavity.

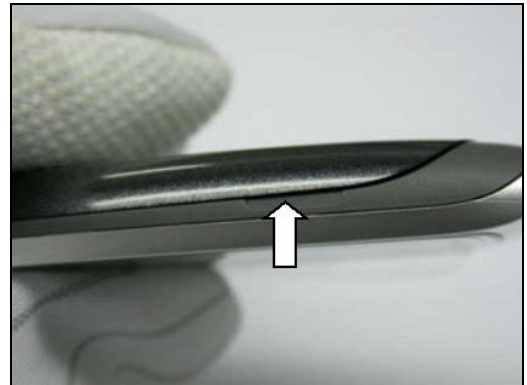
*Follow the Installation instructions of sections 3.5 – 3.1.*



### 3.7 Exchange Cover Ass'y

#### REMOVAL

Use your fingers to remove the Exchange Cover Ass'y.



#### INSTALLATION

Position the Exchange Cover on the Upper Rear Cover Ass'y and snap them together.



### 3.8 Upper Rear Cover Ass'y

#### REMOVAL

Follow the Removal instructions of sections 3.7.

Use Torx bit no 5 to remove the two screws.



Position the guitar pick between the Upper Rear Cover Ass'y and the Upper Front Cover Ass'y.



Slide the guitar pick along each sides of the phone to release the Upper Rear Cover Ass'y from the Upper Front Cover Ass'y.



## Upper Rear Cover Ass'y *continued*

### INSTALLATION

Position the Upper Rear Cover Ass'y onto the Upper Front Cover Ass'y.



#### ***THE UPPER REAR FRONT COVER ASS'Y HAS SNAP HOOKS!***

Use your fingers to press on each side of the Upper Rear Cover Ass'y to snap it onto the Upper Front Cover Ass'y.



Use Torx bit no 5 with torque  $20 \pm 6\%$  Ncm to tighten the 2 screws.

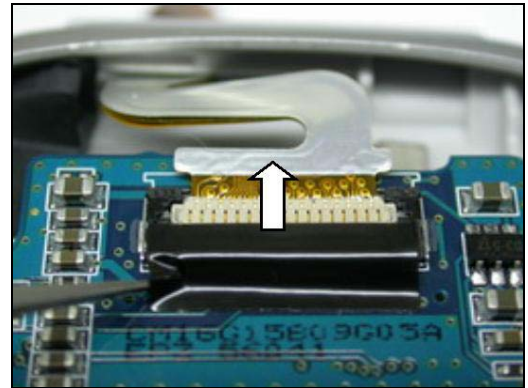
*Follow the Installation instructions of sections 3.7.*



### 3.9 LCD Flex Film Ass'y

#### REMOVAL

Follow the Removal instructions of sections 3.1 – 3.8, 3.18.  
Use a blunt pair of tweezers to remove the Tape FPC.

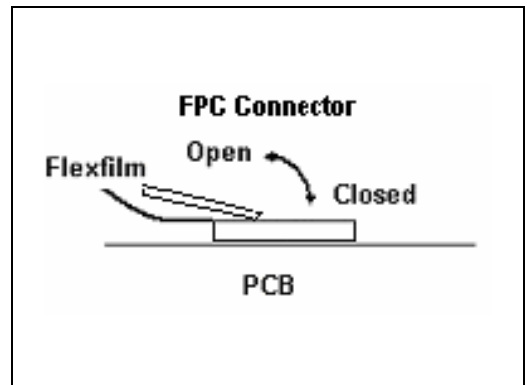


Use a pair of tweezers to remove the Rubber Cap from the Hinge.



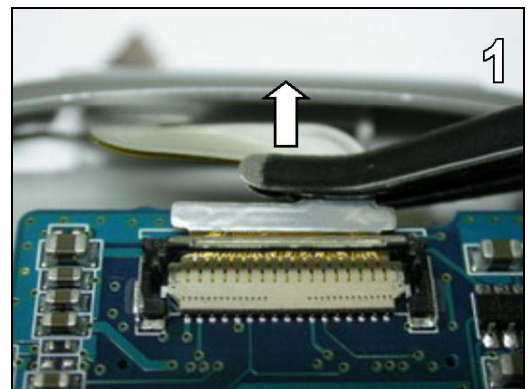
**THE FPC CONNECTOR HAS THIS FUNCTIONALITY!**

Use the flex film assembly tool to open the FPC Connector.



**BE CAREFUL NOT TO DAMAGE THE FPC CONNECTOR DURING THIS PROCEDURE!**

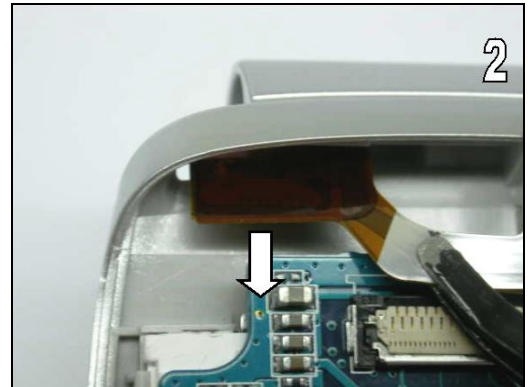
Use the flex film assembly tool to remove the Flex Film Ass'y from the FPC Connector.





## **LCD Flex Film Ass'y** *continued*

Use the flex film assembly tool to remove the Flex Films Assy from the Upper Front Cover Ass'y.

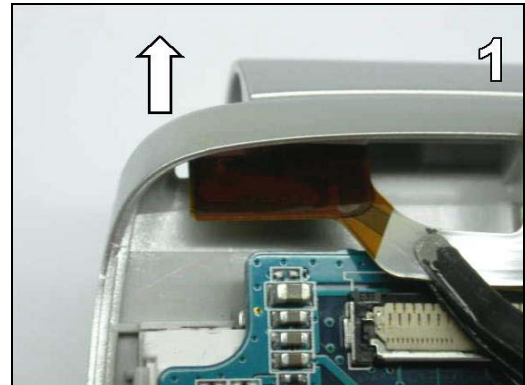


## LCD Flex Film Ass'y continued

### INSTALLATION

**BE CAREFUL NOT TO DAMAGE THE FLEX FILM ASS'Y DURING THIS PROCEDURE!**

Use the flex film assembly tool to slide the Flex Film Ass'y through the Upper Front Cover Ass'y cavity.

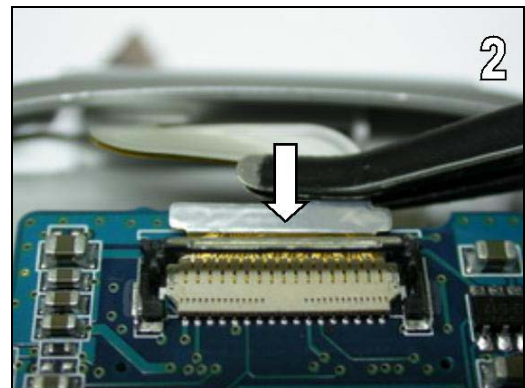


**BE CAREFUL NOT TO DAMAGE THE FLEX FILM ASS'Y DURING THIS PROCEDURE!**

Use the flex film assembly tool to open the FPC Connector.

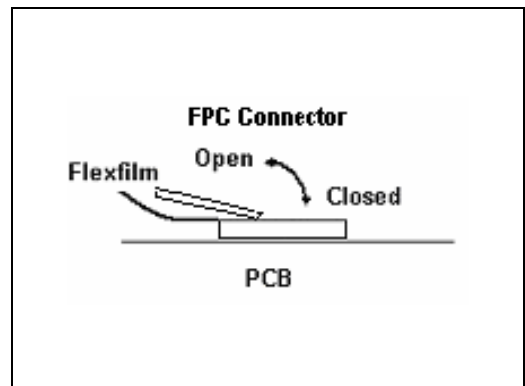
Use the flex film assembly tool to connect the Flex Film Ass'y from the FPC Connector.

Use the flex film assembly tool to close the FPC Connector.



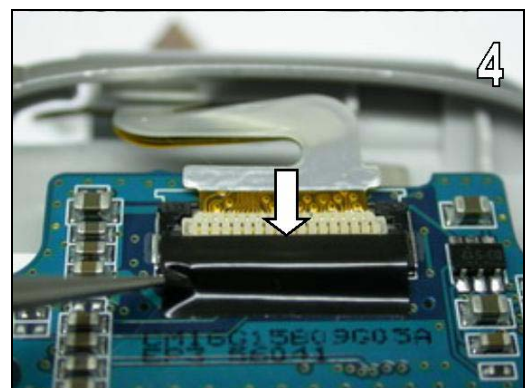
**THE FPC CONNECTOR HAS THIS FUNCTIONALITY!**

Use the flex film assembly tool to close the FPC Connector.



**USE NEW FPC TAPE!**

Use a pair of tweezers to apply the FPC tape.

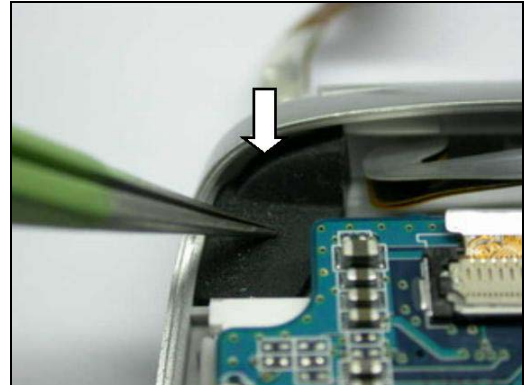


## LCD Flex Film Ass'y *continued*

***USE A NEW RUBBER CAP!***

Use a pair of tweezers to install the Rubber Cap.

*Follow the Installation instructions of sections 3.18, 3.8 – 3.1.*



### 3.10 Main LCD Ass'y

#### REMOVAL

Follow the Removal instructions of sections 3.1 – 3.9, 3.18.

**BE CAREFUL NOT TO DAMAGE THE MAIN LCD ASS'Y DURING THIS PROCEDURE!**

Position the front opening tool between the Main LCD Ass'y and the Upper Front Cover Ass'y.

Bend the front opening tool outwards to release the Main LCD Ass'y from the Upper Front Cover Ass'y.



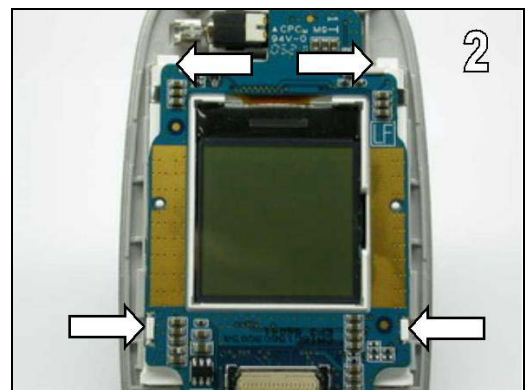
#### INSTALLATION

**BE CAREFUL NOT TO TOUCH THE LCD DURING THIS PROCEDURE!**

**THE UPPER FRONT COVER ASS'Y HAS SNAP HOOKS!**

Use a pair of tweezers to remove the Display Protection Foil.

Use an air duster to clean the Upper Front Cover Lens.



Use your fingers to position the Main LCD Ass'y into the Upper Front Cover Ass'y and snap them together.

Follow the Installation instructions of sections 3.18, 3.9 – 3.1.

### 3.11 Speaker Dust Net

#### REMOVAL

*Follow the Removal instructions of sections 3.1.*

Use a pair of tweezers to remove the Speaker Dust Net from the Lower Rear Cover Ass'y.



#### INSTALLATION

***USE A NEW SPEAKER DUST NET!***

Clean the Lower Rear Cover with Isopropyl Alcohol.

Use a pair of tweezers to apply the Speaker Dust Net onto the Lower Rear Cover.

*Follow the Installation instructions of sections 3.1.*

## 3.12 Loudspeaker Ass'y

### REMOVAL

*Follow the Removal instructions of sections 3.1 – 3.2.*

**BE CAREFUL NOT TO DAMAGE THE FLEX FILM W/ CARRIER OR THE LOUDSPEAKER DURING THIS PROCEDURE!**

Insert a pair of tweezers in the gap of the Flex Film w/ Carrier.

Lift up the Loudspeaker Ass'y and remove it.



### INSTALLATION

Clean the Earphone Cavity with Isopropyl Alcohol.

Remove the Protection Foil from the Loudspeaker.

Position the Loudspeaker Ass'y into the Flex Film w/ Carrier cavity and press down the Loudspeaker Ass'y to install it.

*Follow the Installation instructions of sections 3.1 – 3.2.*





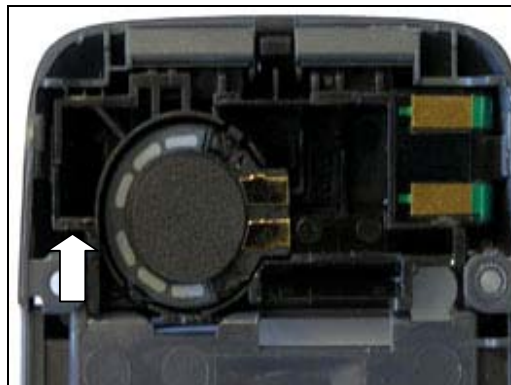
### 3.13 Flex Film w/ Carrier

#### REMOVAL

*Follow the Removal instructions of sections 3.1 – 3.2.*

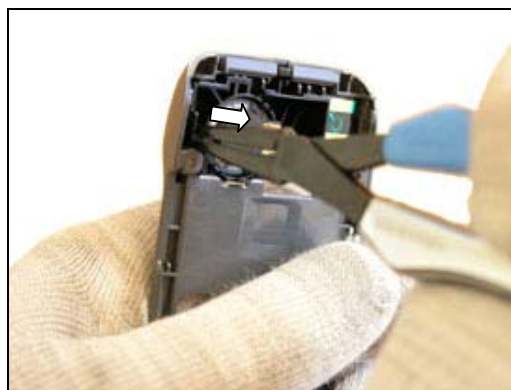
**REMOVE THE FLEX W/ CARRIER ONLY IF IT IS BROKEN!**

Grab the Flex Film w/ Carrier in the plastic to the left of the Loudspeaker Ass'y.



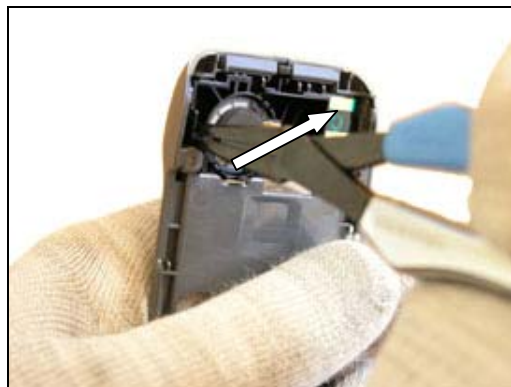
**BE CAREFUL NOT TO DAMAGE THE LOWER REAR FRAME DURING THIS PROCEDURE!**

Bend the Flex Film w/ Carrier to the right in order to release it from the Lower Rear Frame left snap hook.



**BE CAREFUL NOT TO DAMAGE THE LOWER REAR FRAME DURING THIS PROCEDURE!**

Bend the Flex Film w/ Carrier upwards to the right to separate the Flex Film w/ Carrier from the Lower Rear Frame.



## Flex Film w/ Carrier continued

### INSTALLATION

**THERE ARE TWO KINDS OF FLEX FILM /W CARRIER ASSY'S!**

This is a Flex Film /w Carrier Ass'y/850/1900.



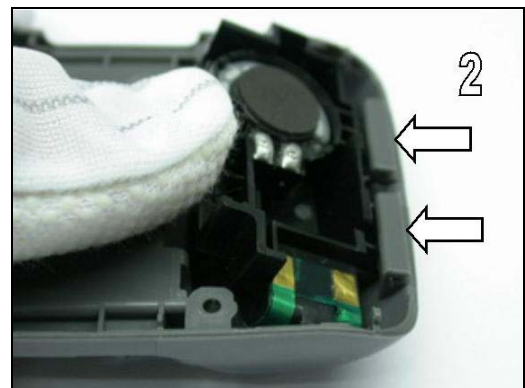
**THERE ARE TWO KINDS OF FLEX FILM /W CARRIER ASSY'S!**

This is a Flex Film /w Carrier Ass'y/900/1800.



**THE LOWER REAR COVER ASS'Y HAS SNAP HOOKS!**

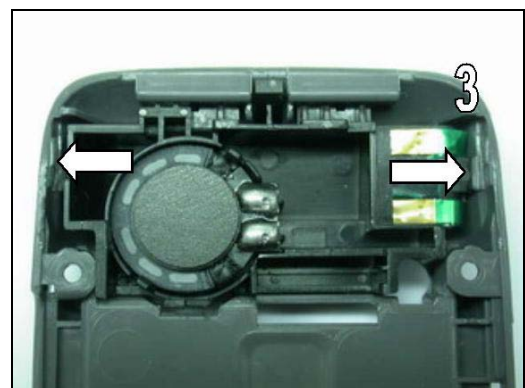
Use your thumb and press down the Flex Film w/ Carrier into the Lower Rear Cover Ass'y.



**THE LOWER REAR COVER ASS'Y HAS SNAP HOOKS!**

Use your fingers to press on each side of the Flex Film w/ Carrier to install it into the Lower Rear Cover Ass'y.

Follow the Installation instructions of sections 3.2 – 3.1.



## 3.14 Liquid Intrusion Indicator

### REMOVAL

*Follow the Removal instructions of sections 3.1 – 3.2.*

***BE CAREFUL NOT TO DAMAGE THE REAR COVER DURING THIS PROCEDURE!***

Use a pair of tweezers to remove the Liquid Intrusion Indicator.



### INSTALLATION

***USE A NEW WATER DAMAGE INDICATOR!***

***BE CAREFUL NOT TO DAMAGE THE REAR COVER DURING THIS PROCEDURE!***

Clean the Lower Rear Cover with Isopropyl Alcohol.

Use a pair of tweezers to apply the Liquid Intrusion Indicator.

*Follow the Installation instructions of sections 3.2 – 3.1.*

### 3.15 Side Key Gasket

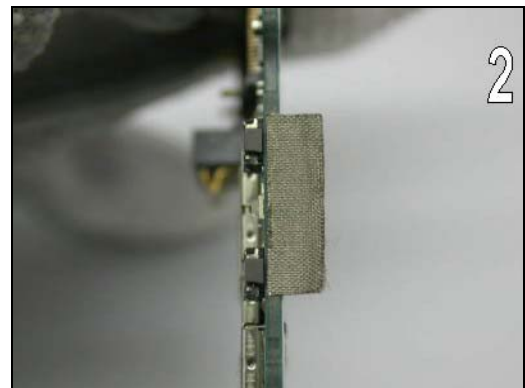
#### REMOVAL

*Follow the Removal instructions of sections 3.1 – 3.4.*  
Use a pair of tweezers to remove the Side Key Gasket.

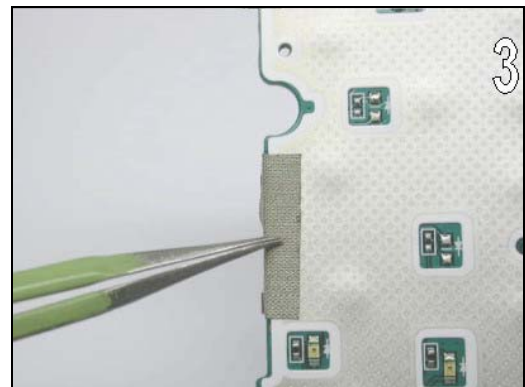


#### INSTALLATION

**USE A NEW SIDE KEY GASKET!**  
**BE CAREFUL NOT TO TOUCH TO DOME FOIL OR THE PCB DURING THIS PROCEDURE!**  
Position the Side Key Gasket along the PCB.



**BE CAREFUL NOT TO TOUCH TO DOME FOIL OR THE PCB DURING THIS PROCEDURE!**  
Use a pair of tweezers or your fingers to install the Side Key Gasket on the Dome Switch Foil.  
*Follow the Installation instructions of sections 3.4 – 3.1.*

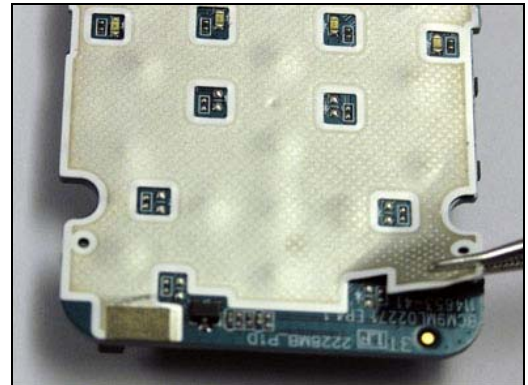


### 3.16 Dome Switch Foil

#### REMOVAL

*Follow the Removal instructions of sections 3.1 – 3.4.*

*The Use a pair of tweezers to remove the Keypad Dome.*



#### INSTALLATION

***USE A NEW KEYPAD DOME!***

***BE CAREFUL NOT TO TOUCH TO DOME FOIL OR THE PCB DURING THIS PROCEDURE!***

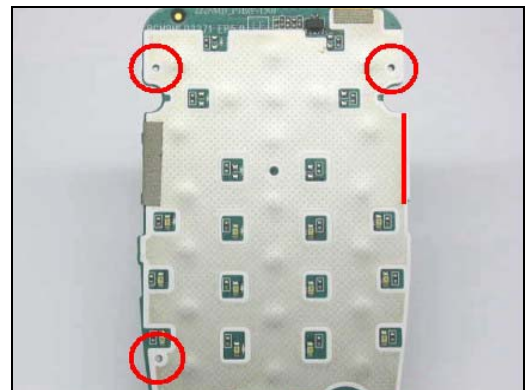
***THE PCB AND THE KEYPAD DOME HAS GUIDING HOLES!***

***THE PCB EDGE SHALL BE EXACTLY BELOW THE KEYPAD DOME EDGE!***

Clean the PCB with Isopropyl Alcohol.

Place the Keypad Dome on the PCB.

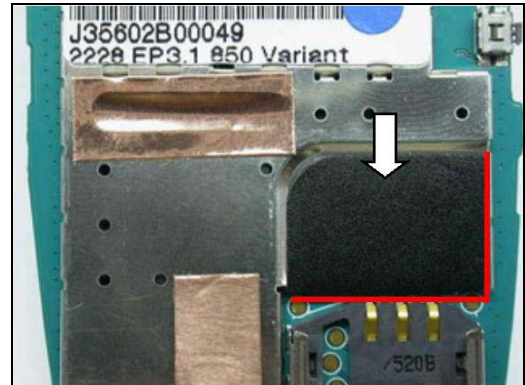
*Follow the Installation instructions of sections 3.4 – 3.1.*



### 3.17 Tape Shield Can

#### REMOVAL

*Follow the Removal instructions of sections 3.1 – 3.2.*  
Use a pair of tweezers to remove the Tape Shield Can.



#### INSTALLATION

***USE A NEW TAPE SHIELD CAN!***

Use a pair of tweezers to install the Tape Shield Can.  
*Follow the Installation instructions of sections 3.2 – 3.1.*



### 3.18 Name Plate

#### REMOVAL

***BE CAREFUL NOT TO DAMAGE THE LOWER FRONT ASS'Y DURING THIS PROCEDURE!***

Use a pair of tweezers to remove the Name Plate.



#### INSTALLATION

***USE A NEW NAME PLATE!***

Clean the surface with Isopropyl Alcohol.

Use a pair of tweezers to install the Name Plate.

### 3.19 Microphone Ass'y

#### REMOVAL

*Follow the Removal instructions of sections 3.1 – 3.3.*

**BE CAREFUL NOT TO DAMAGE THE MICROPHONE DURING THIS PROCEDURE!**

Use a dentist hook or a pair of tweezers to remove the Microphone.



#### INSTALLATION

**USE A NEW MICROPHONE!**

Use a pair of tweezers and press the Microphone down into its cavity to install it.

*Follow the Installation instructions of sections 3.3 – 3.1.*

## 3.20 Rubber Holder for Exchange Cover

### REMOVAL

*Follow the Removal instructions of sections 3.7.*

Use a pair of tweezers to remove the Rubber Holder on the right side.



Use a pair of tweezers to remove the Rubber Holder on the left side.



### INSTALLATION

***USE A NEW RUBBER HOLDER FOR EXCHANGE COVER!***

Clean the Exchange Cover with Isopropyl Alcohol.

Use a pair of tweezers to install the Rubber Holder on the right side.



***USE A NEW RUBBER HOLDER FOR EXCHANGE COVER!***

Clean the Exchange Cover with Isopropyl Alcohol.

Use a pair of tweezers to install the Rubber Holder on the left side.

*Follow the Installation instructions of sections 3.7.*



## 3.21 Hinge Unit

### REMOVAL

*Follow the Removal instructions of sections 3.1 – 3.6.*

**BE CAREFUL NOT TO DAMAGE THE UPPER FRONT COVER DURING THIS PROCEDURE!**

Use a pair of tweezers to push the Hinge Unit through the Hinge hole and remove it.

### INSTALLATION

**USE A NEW HINGE UNIT!**

Use your fingers and press the Hinge Unit into the Hinge hole to install it.

*Follow the Installation instructions of sections 3.6 – 3.1.*

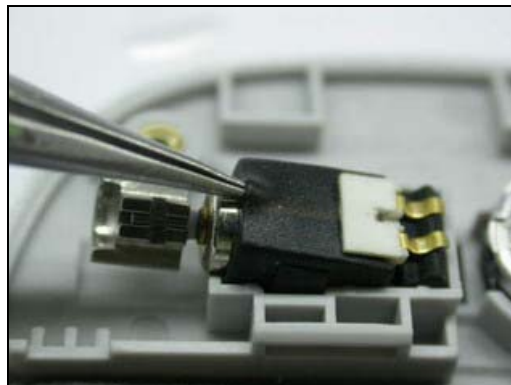


## 3.22 Vibrator

### REMOVAL

*Follow the Removal instructions of sections 3.1 – 3.10, 3.18.*

Use a pair of tweezers to remove the Vibrator.

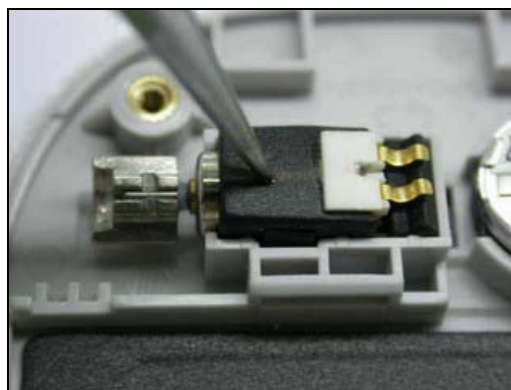


### INSTALLATION

***DO NOT TOUCH TO VIBRATOR CONTACT SPRING OR THE FLYWHEEL DURING THIS PROCEDURE!***

Use a pair of tweezers and press down the Vibrator into its cavity.

*Follow the Removal instructions of sections 3.18, 3.10 – 3.1.*

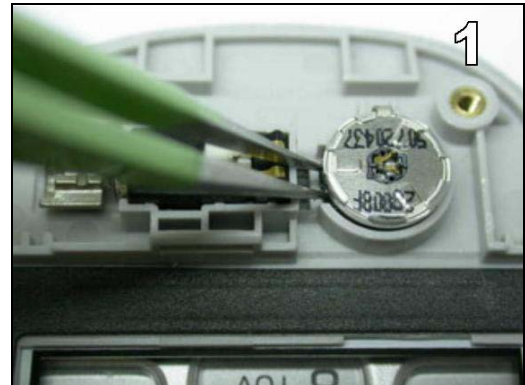


## 3.23 Earphone & Earphone Gasket

### REMOVAL

Follow the Removal instructions of sections 3.1 – 3.10, 3.18.

Position a pair of tweezers in the Upper Front Cover gap.  
Lift the Earphone upwards and remove it.



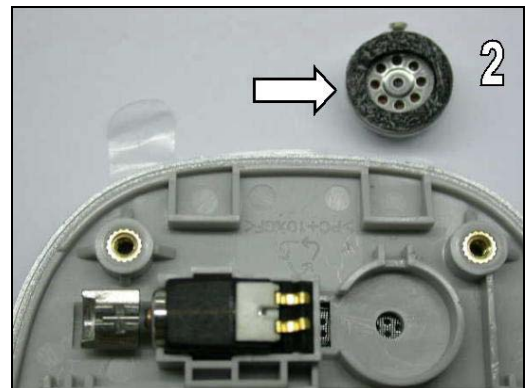
### INSTALLATION

**USE A NEW EARPHONE GASKET!**

**REMOVE THE PROTECTION FOIL FROM THE EARPHONE GASKET!**

Clean the Earphone cavity with Isopropyl Alcohol.

Apply an Earphone Gasket on the Earphone.

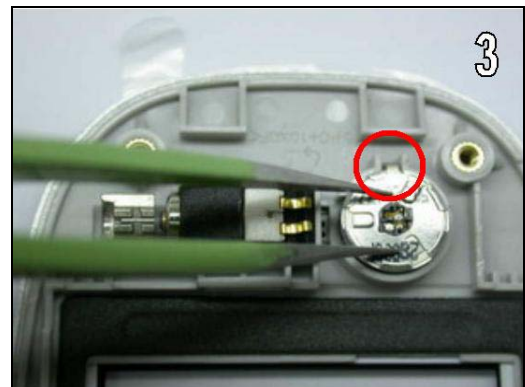


**THE EARPHONE PIN SHALL BE POINTING UPWARDS!**

Use a pair of tweezers to position the Earphone.

Press the Earphone into its cavity.

Follow the Installation instructions of sections 3.18, 3.10 – 3.1.





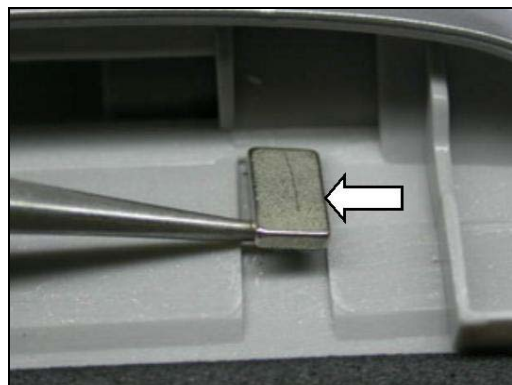
## 3.24 Magnet

### REMOVAL

*Follow the Removal instructions of sections 3.7 – 3.10.*

**BE CAREFUL NOT TO DAMAGE THE UPPER FRONT COVER DURING THIS PROCEDURE!**

Use a pair of tweezers to lift up the Magnet and remove it.



### INSTALLATION

**USE A NEW MAGNET!**

Clean the Magnet cavity with Isopropyl Alcohol.

Use a pair of tweezers to install the Magnet.

*Follow the Removal instructions of sections 3.10 – 3.7.*

## 4 Label

This instruction should be used when exchanging an old label or installing a new one.

**ONE LABEL ONLY IS ALLOWED!**

### EQUIPMENT

The following equipment is required:

- Hot air flow solder station
- Blunt pair of tweezers
- Zebra printer connected to computer



### REMOVAL

*Follow the Removal instructions of section 3.1*

- Read the old label and/or write the information into the "Label make" program before removal
- Note the position of the label before removal
- Heat up the label by using hot air, if needed.
- Carefully remove the label without causing scratches
- If there still are residues, clean the surface with isopropyl alcohol

### INSTALLATION

- Check that the proper label format is loaded in the Zebra printer.
- Write a new label by using the program "Label make" and check that the printing is OK.
- Take the new label and place it onto the frame as in the adjacent picture.
- Make sure the label is placed in its proper position.

*Follow the Installation instructions of section 3.1*





## 5 Revision History

| Rev. | Date       | Changes / Comments  |
|------|------------|---|
| A    | 2005-12-14 | Initial release   |
| B    | 2006-04-03 | Information in section "Read this first!" is changed since movies will open in Internet Explorer only (not Flash Player) due to compatibility problems with Flash Player 8. |