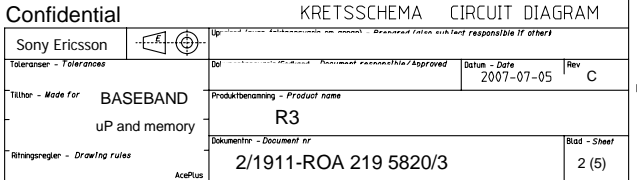


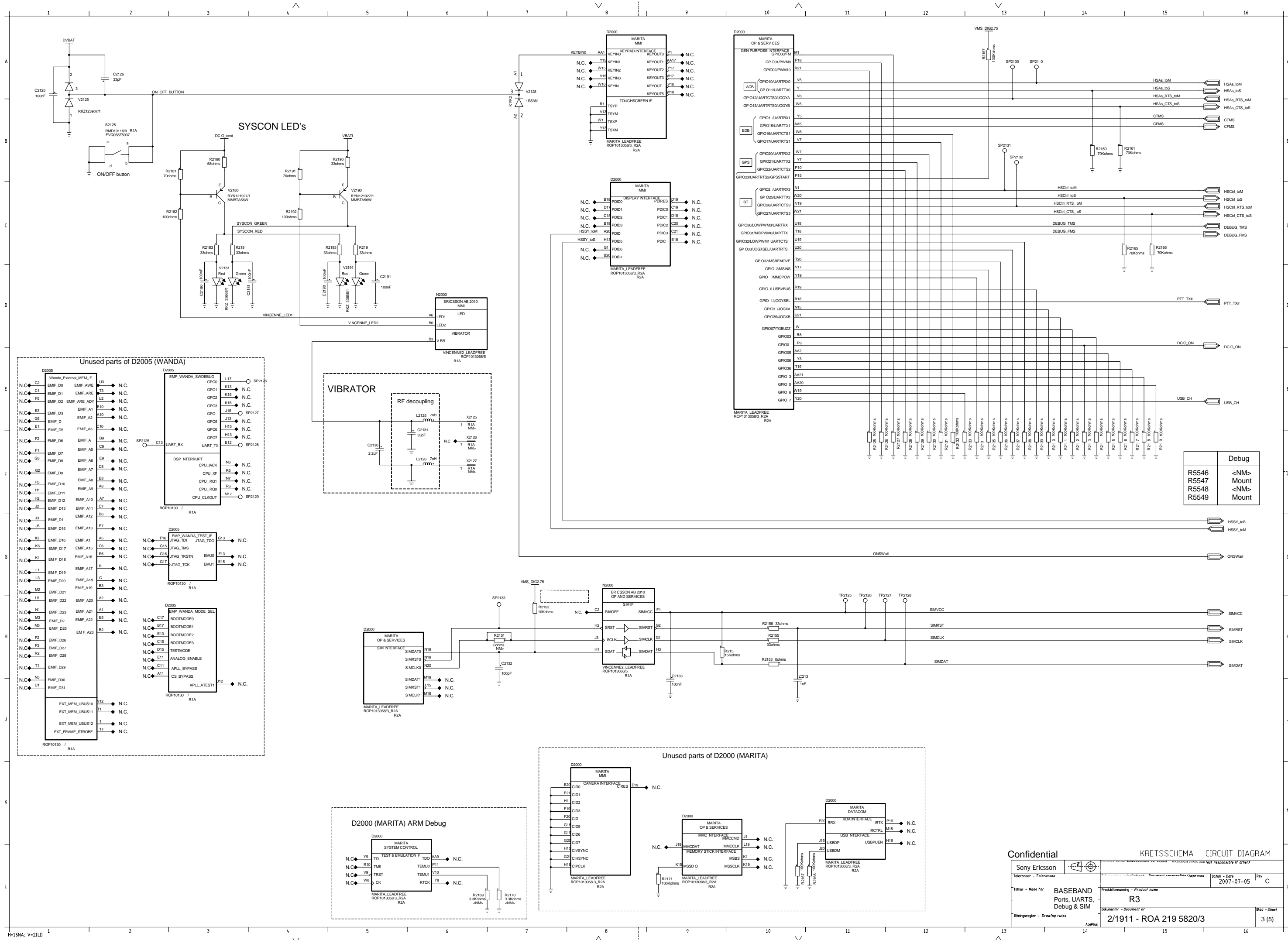
TO RADIO

TO PDA

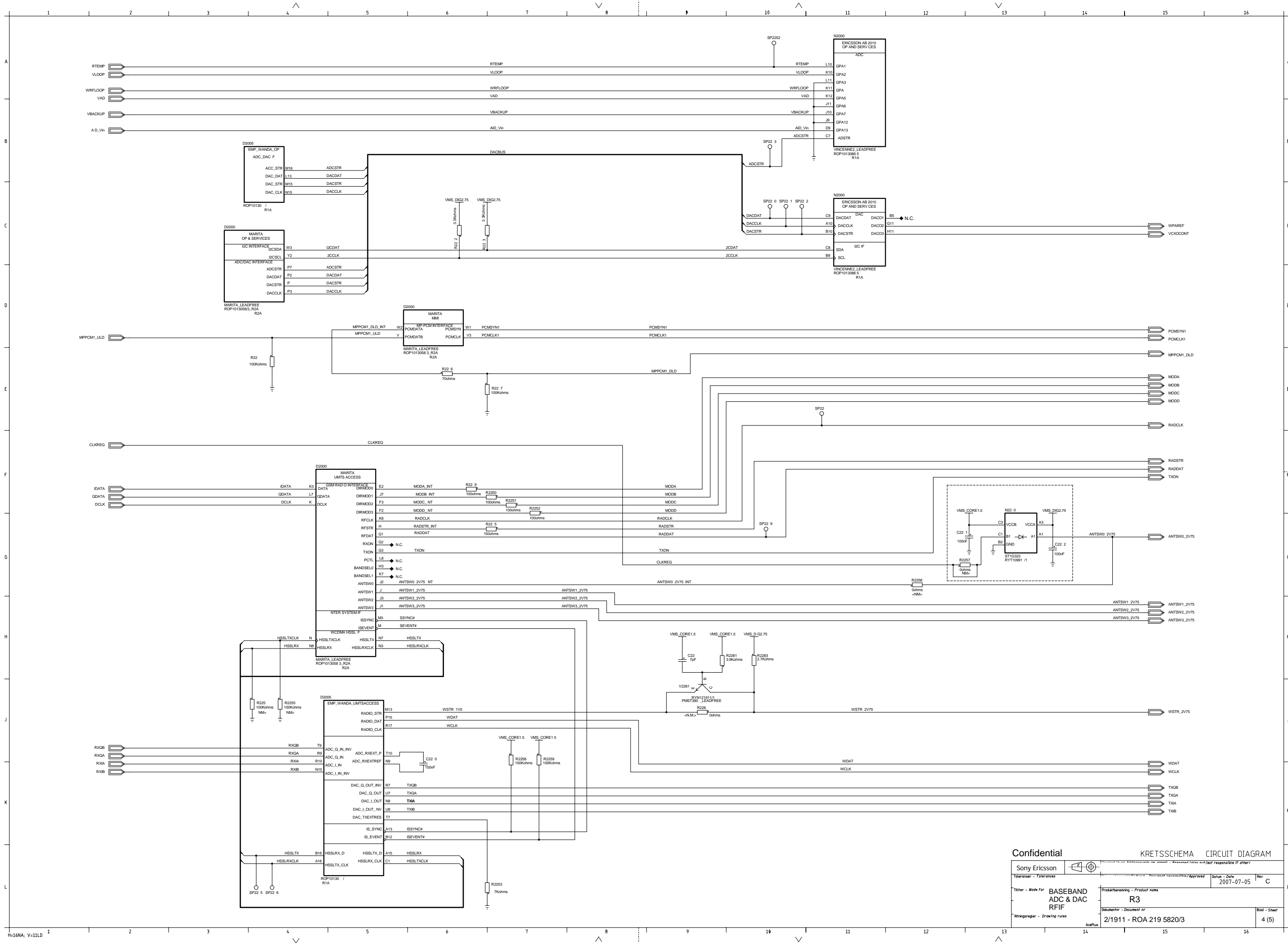
uP and memory (page 2) 2000 - 2124  
Ports, UARTs, Debug & SIM (page 3) 2125 - 2239  
ADC, DAC and Radio IF (page 4) 2240 - 2374  
Decoupling & VPP (page 5) 2375 - 2499

Sony Ericsson		Uppgjord (även faktaansvarig om annan) - Prepared (also subject responsible if other)	
Toleranser - Tolerances		Dokumentansvarig/Godkänd - Document responsible/Approved	
Tillhör - Made for		Datum - Date	
BASEBAND Baseband Top		2007-07-05	
Ritningsregler - Drawing rules		Rev	
		C	
		Produktbenämning - Product name	
		R3	
		Blad - Sheet	
		1(5)	
		2/1911 - ROA 219 5820/3	

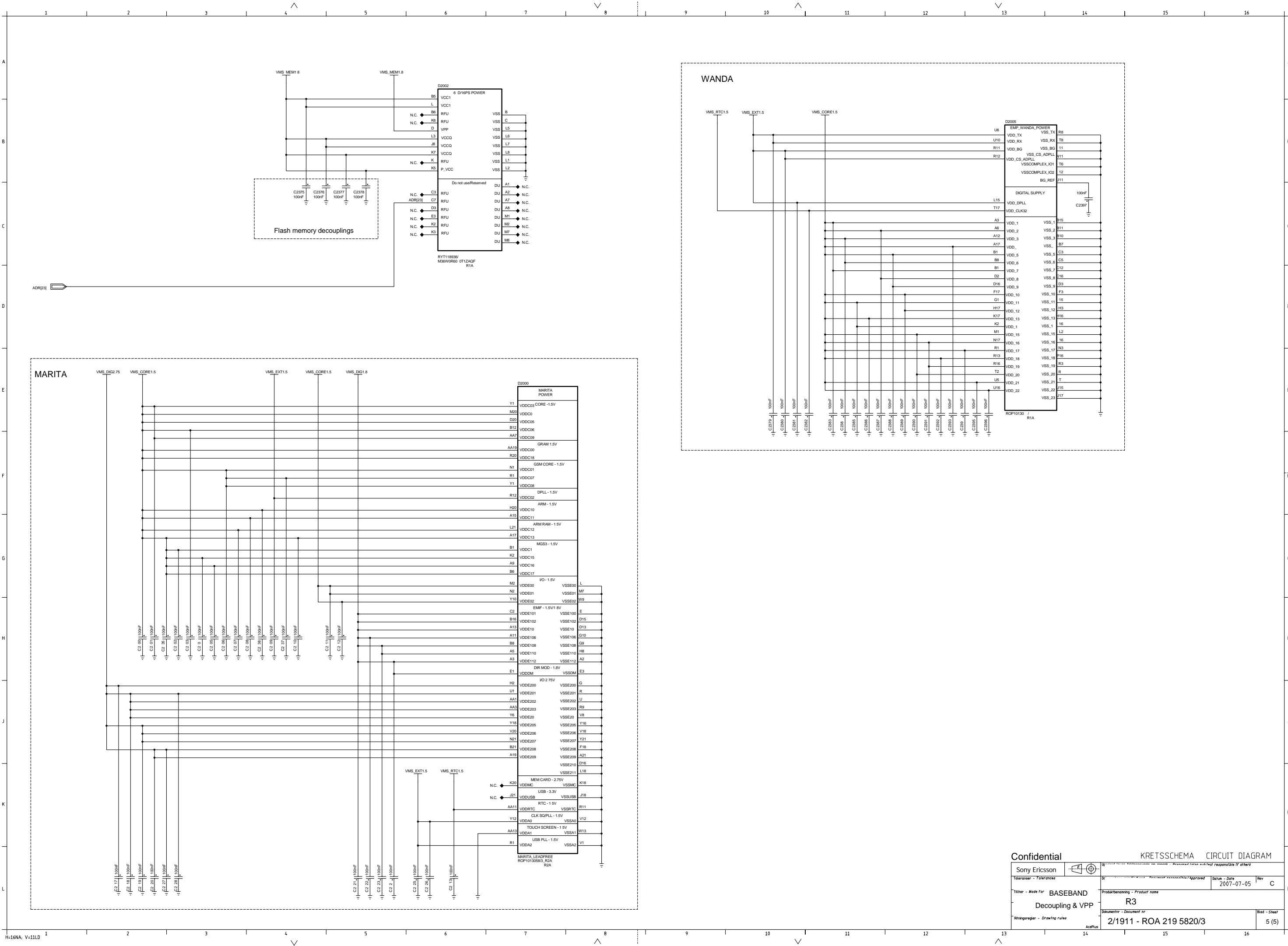




LZF 030 101/F R81



Confidential		KRETSSCHEMA CIRCUIT DIAGRAM	
Sony Ericsson		Tolerances - Tolerances	
Tillnor - Made for		Produktbenämning - Product name	
BASEBAND ADC & DAC RFIF		R3	
Reviseringsregler - Drawing rules		Dokumentnr - Document nr	
		2/1911 - ROA 219 5820/3	
		Blad - Sheet	
		4 (5)	



LZF 030 101/F RB1

H=16NA; V=11LD

Confidential

KRETSSCHEMA CIRCUIT DIAGRAM

Sony Ericsson		Approved for release on board - Released into public responsible if others	
Tolerance - Tolerances		Produktbenennung - Product name	Datum - Date
Tilbehør - Made for BASEBAND		2007-07-05	
Decoupling & VPP		Rev C	
Ritningsregler - Drawing rules		Dokumentnr - Document nr	Blad - Sheet
		2/1911 - ROA 219 5820/3	5 (5)