

Component Replacement - electrical -



*Xperia XZ2 Compact
H8314, H8324 (Dual SIM)*

CONTENTS

1 Replaceable Components 3

2 Tools 5

3 Component Placing..... 7

4 Additional Repair Info 9

5 Revision History 16

For general information about electrical repair related issues, refer to 1220-1336: Generic Repair Manual - electrical -. (RE4252)

Baking prior to repair is required, if the board have been exposed to air more than 12 hours from PWB package opening. Too long exposure time increase the level of moisture in PWB and the PWB could delaminate during repair process and result in direct or latent failures and reduce reliability.

The boards shall be baked in 125°C ±5°C for 4 hours.

All Electrical components are RLC (Reversed Logistic Classification) level C, refer to the 3.4 Valid Spare Parts chapter in the Warranty Claim Instruction RE4249 about disposition of the parts.

Test after component replacement to refer to the 1315-3341 Test Instructions.

Do not remove shield can lids (RF performance will be damaged).

If there are components located on right next to the component that intend to replace, protect those components with Kapton tape to avoid damages.

1 Replaceable Components

EXPLANATION OF ABBREVIATIONS USED IN THE COLUMN 'COMMENTS' BELOW

REPAIR METHOD

HA = Hot Air (removal & mounting)

ST = Soldering Tool (removal & mounting)

HA/ST = Hot Air for removal - Soldering Tool for mounting

BGA = BGA Station

BH = Bottom Heater

ADDITIONAL INFORMATION

⇒1 (2, 3, 4, etc.) = Proceed to 'Additional Repair Info' for further instructions in the indicated section(s).

Primary Side

Position	Component	Part no.	Comments
CN1300	Conn BtB Plug 4p HIROSE/BM22	1281-9973	P HA+BH⇒1
CN2201	Conn BtB Receptacle 60p NOVASTACK 35-P R	1309-8835	P HA+BH⇒2
CN4000	Card Conn SIM 3in2 Connector	1299-2861	P HA+BH or BGA⇒3
CN7000	Conn BtB Receptacle 40p IPEX NOVASTACK V	1298-2647	P HA+BH⇒7
CN7301	Conn BtB Receptacle 26p DDK BB35	1293-6913	P HA+BH⇒5
CN9502	Conn BtB Receptacle 10p FUJIKURA BB35	1306-7941	P HA+BH⇒6
CN9503	Conn FPC Receptacle 15p	1253-7164	P HA+BH⇒8
CN9504	Conn BtB Receptacle 10p FUJIKURA BB35	1306-7941	P HA+BH⇒4
CN9508	Conn BtB Receptacle 10p FUJIKURA BB35	1306-7941	P HA+BH⇒9
D7601	LED 2.7x1.35x0.5mm	1292-0821	P HA+BH⇒4
UC7602	Fuse Fuse 0.25A rating	1310-3631	P HA+BH⇒7

Replaceable Components

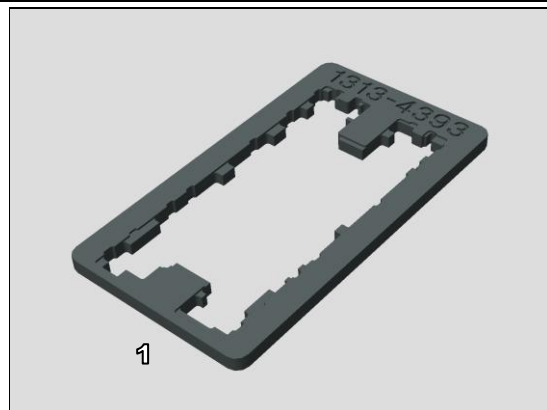
Secondary Side

Position	Component	Part no.	Comments
CN3505	Conn Leaf Spring Plug 1p	1294-5853	S HA+BH⇒7
CN3506	Conn Leaf Spring Plug 1p	1294-5853	S HA+BH⇒7
CN4600	Conn Leaf Spring Plug 1p	1294-5853	S HA+BH⇒4
CN4625	Conn Leaf Spring Plug 1p	1294-5853	S HA+BH⇒6
CN4626	Conn Leaf Spring Plug 1p	1294-5853	S HA+BH⇒6
CN4627	Conn Leaf Spring Plug 1p	1294-5853	S HA+BH⇒6
CN4628	Conn Leaf Spring Plug 1p	1294-5853	S HA+BH⇒6
CN4629	Conn Leaf Spring Plug 1p	1294-5853	S HA+BH⇒6
CN4631	Conn Leaf Spring Plug 1p	1294-5853	S HA+BH⇒10
CN4633	Conn Leaf Spring Plug 1p	1294-5853	S HA+BH⇒11
CN4700	Conn Leaf Spring Plug 1p	1294-5853	S HA+BH⇒13
CN4715	Conn Leaf Spring Plug 1p	1294-5853	S HA+BH⇒15
CN4722	Conn Leaf Spring Plug 1p	1294-5853	S HA+BH⇒15
CN4725	Conn Leaf Spring Plug 1p	1294-5853	S HA+BH⇒14
CN4731	Conn Leaf Spring Plug 1p	1294-5853	S HA+BH⇒15
CN4735	Conn Leaf Spring Plug 1p	1294-5853	S HA+BH⇒12
CN4740	Conn Leaf Spring Plug 1p	1294-5853	S HA+BH⇒1
CN4745	Conn Leaf Spring Plug 1p	1294-5853	S HA+BH⇒1
CN4750	Conn Leaf Spring Plug 1p	1294-5853	S HA+BH⇒9
CN4755	Conn Leaf Spring Plug 1p	1294-5853	S HA+BH⇒5
CN4765	Conn Leaf Spring Plug 1p	1294-5853	S HA+BH⇒14
CN4775	Conn Leaf Spring Plug 1p	1294-5853	S HA+BH⇒14
CN4780	Conn Leaf Spring Plug 1p	1294-5853	S HA+BH⇒16
CN4782	Conn Leaf Spring Plug 1p	1294-5853	S HA+BH⇒2
CN7300	Conn BtB Receptacle 34p DDK BB35	1293-6188	S HA+BH⇒8
CN8850	Conn Leaf Spring Plug 1p WH : 1.6+-0.2	1297-5833	S HA+BH⇒3
CN8851	Conn Leaf Spring Plug 1p WH : 1.6+-0.2	1297-5833	S HA+BH⇒3
M5103	Vibrator Bar SMD	1208-0601	S HA+BH⇒14

2 Tools

SPECIAL TOOL

1. PBA Soldering Fixture (1313-4393)



STANDARD TOOLS

1. Small Convection (Hot Air) Device



2. Soldering Iron



3. Soldering wick



Tools

4. Solder-wire



5. Solder-paste



6. Low Static Heat Protection Tape



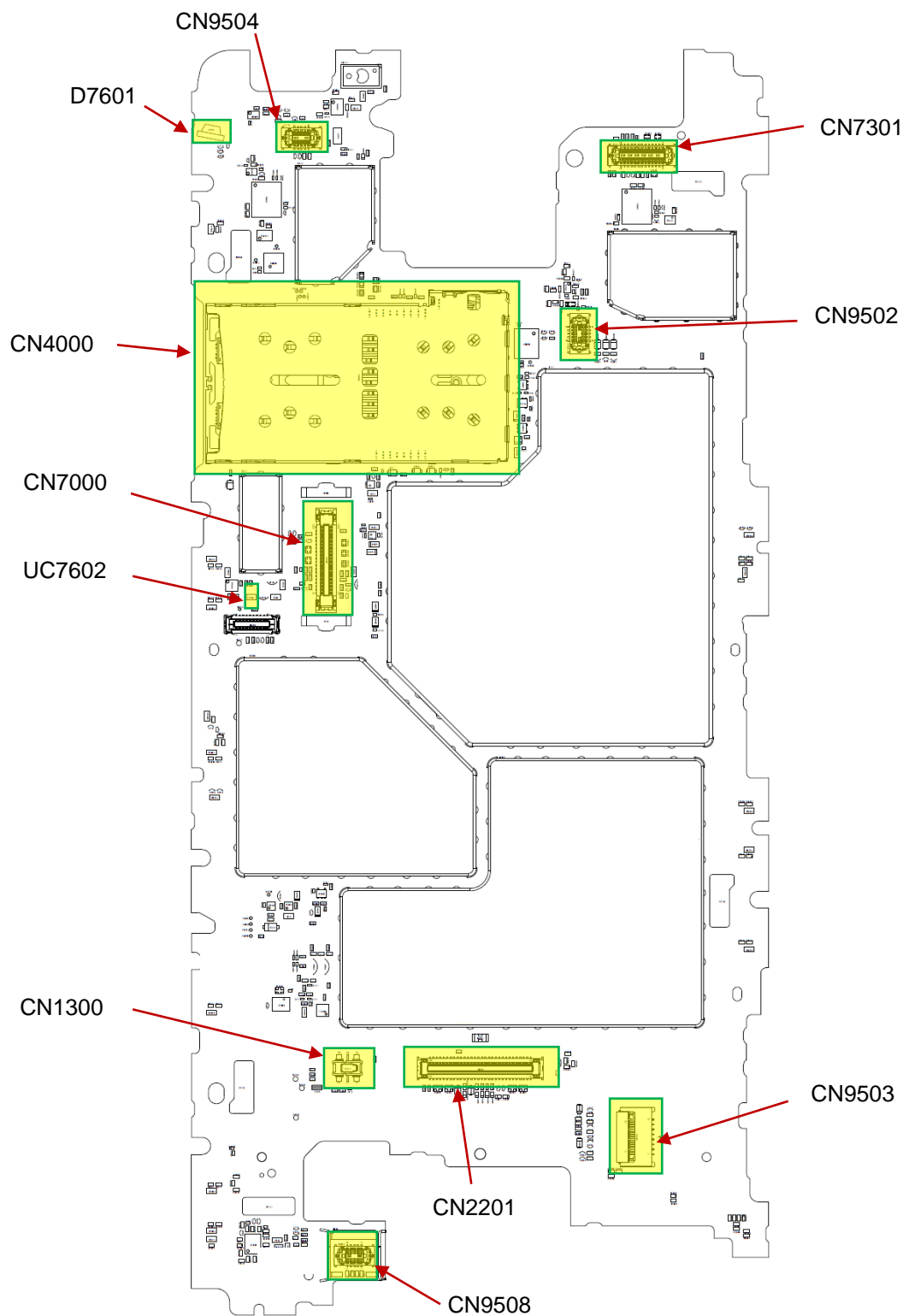
7. Flux



Refer to the 1003-9107 Tools Catalogue (RE4251) for detail of standard tools.

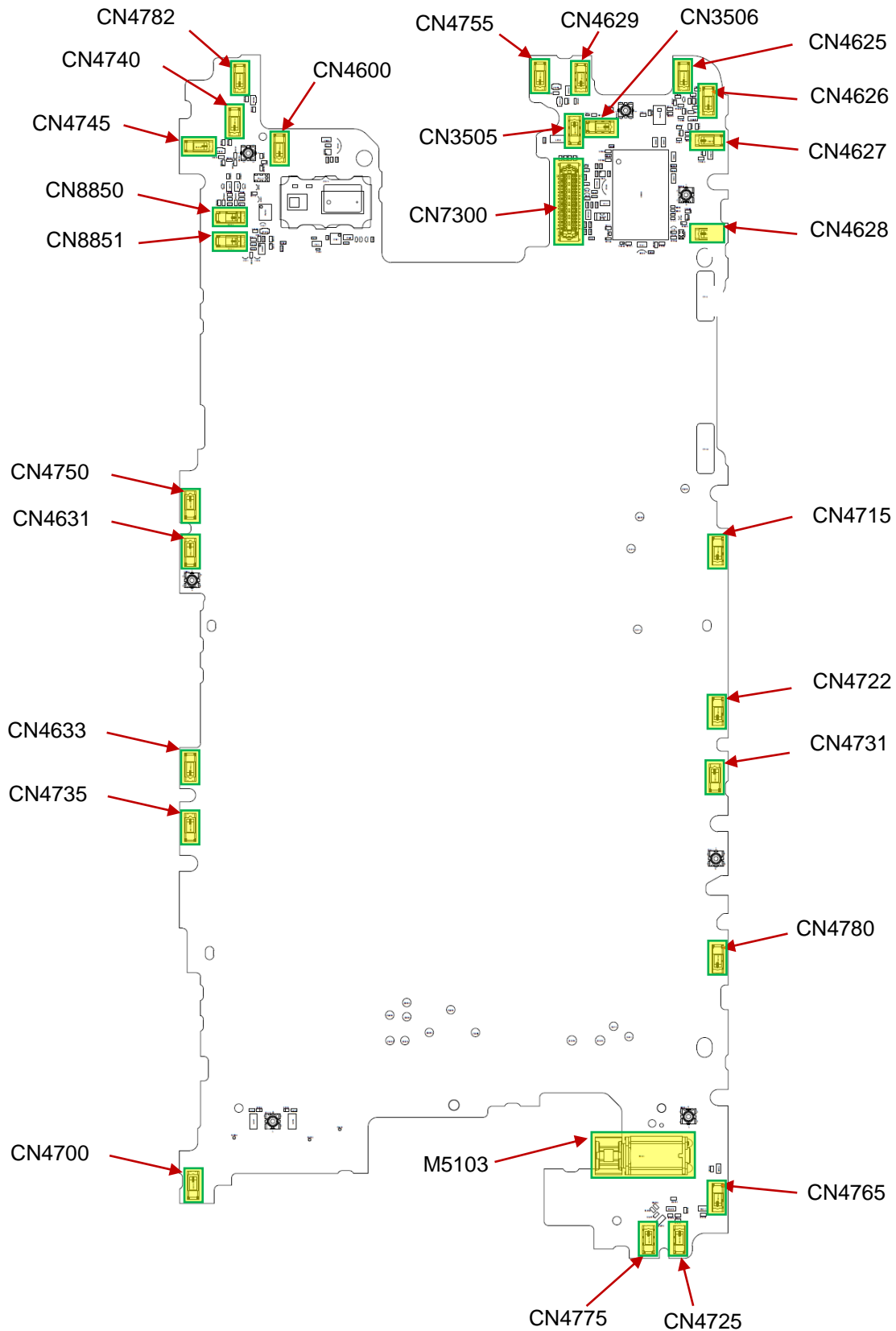
3 Component Placing

Primary Side



Component Placing

Secondary Side

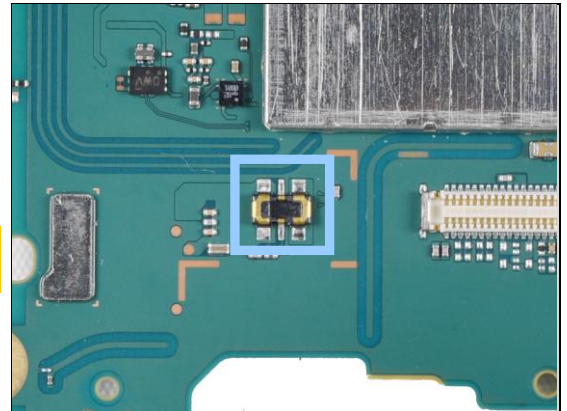


4 Additional Repair Info

Primary Side 1

CN1300

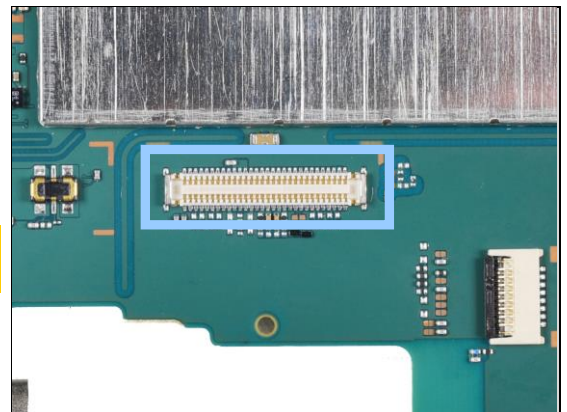
Replace if mechanically damaged. (Cannot power on / charge).



Primary Side 2

CN2201

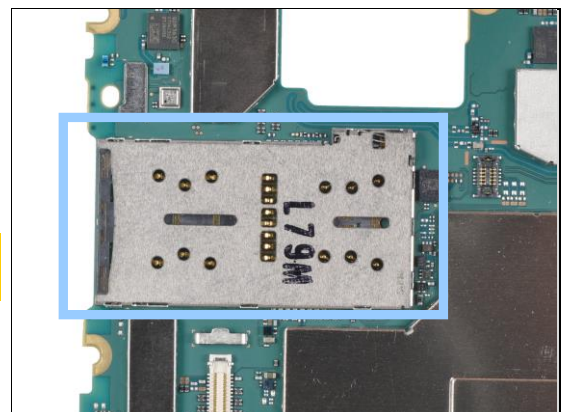
Replace if mechanically damaged. (Cannot charge, No data connection, Audio-USB conversion does not work)



Primary Side 3

CN4000

Replace if mechanically damaged. (No SIM/SD detection, Restart)



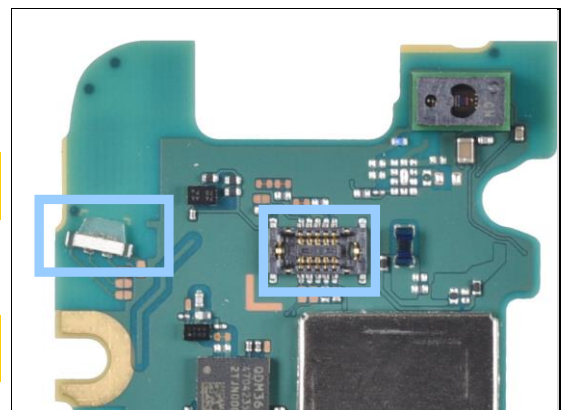
Primary Side 4

CN9504

Replace if mechanically damaged. (Second microphone, RGB IR sensor problem)

D7601

Replace if mechanically damaged. (LED indicator does not work)

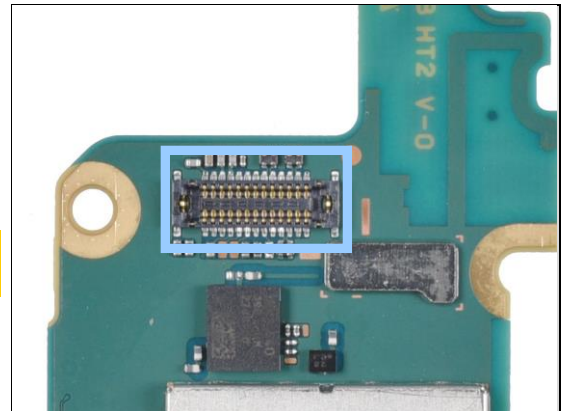


Additional Repair Info

Primary Side 5

CN7301

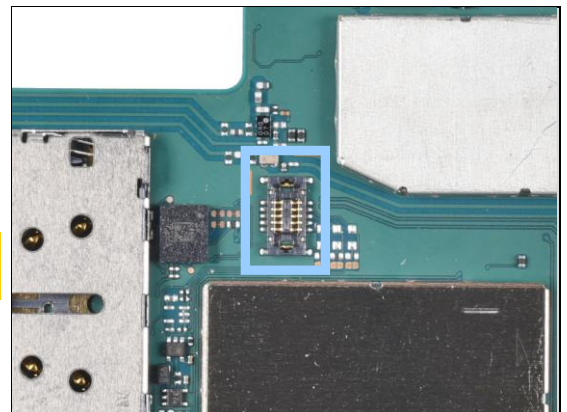
Replace if mechanically damaged. (Front Camera problem)



Primary Side 6

CN9502

Replace if mechanically damaged. (Volume Key or Power Key problem)



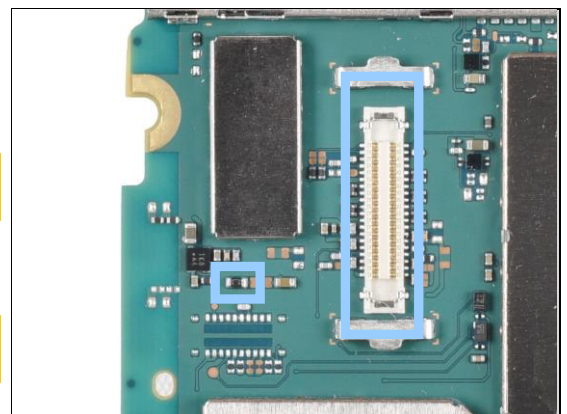
Primary Side 7

CN7000

Replace if mechanically damaged. (Display/Touch problem)

UC7602

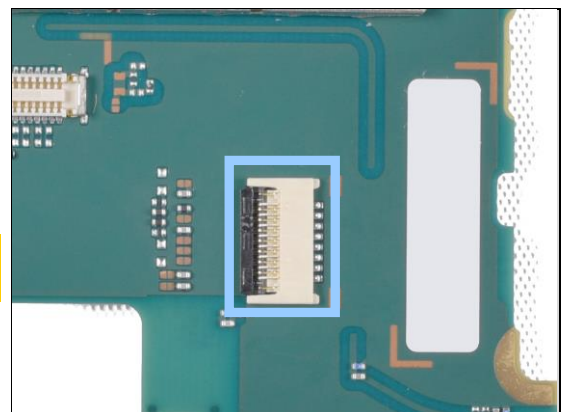
Replace if mechanically damaged. (Display backlight does not come on)



Primary Side 8

CN9503

Replace if mechanically damaged. (Camera Key or Fingerprint sensor problem)

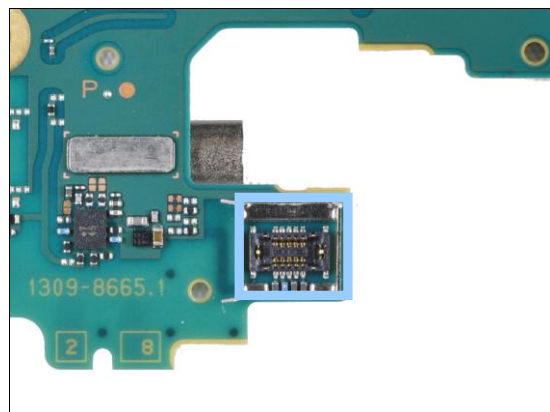


Additional Repair Info

Primary Side 9

CN9508

Replace if mechanically damaged. (Main microphone problem)

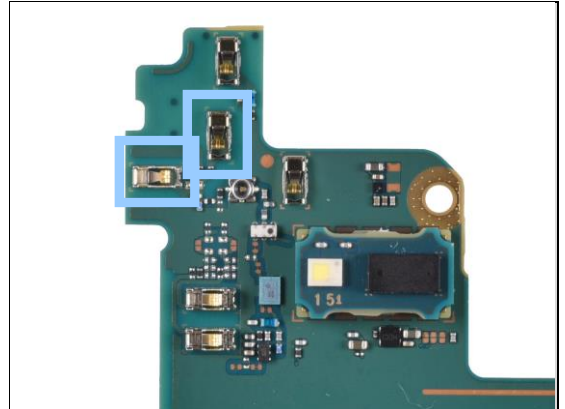


Additional Repair Info

Secondary Side 1

CN4740, CN4745

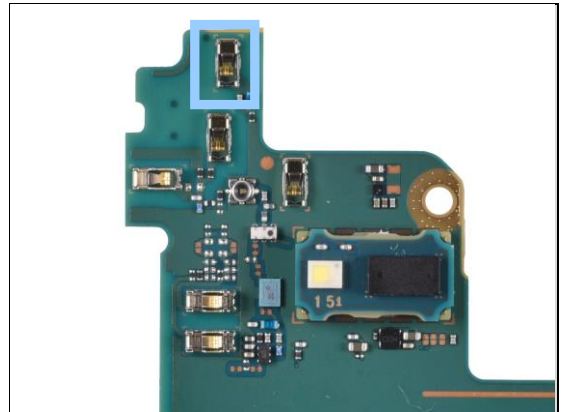
Replace if mechanically damaged. (No or bad network, GPS problem)



Secondary Side 2

CN4600

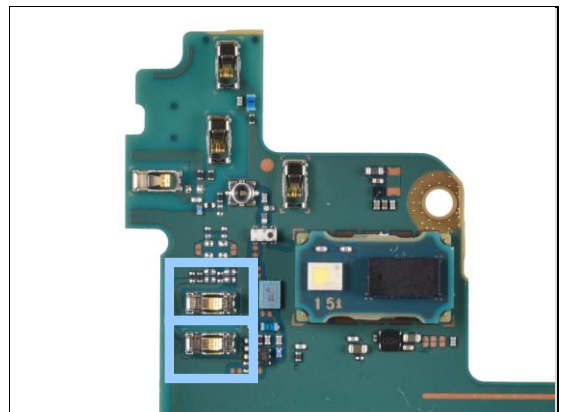
Replace if mechanically damaged. (No or bad network)



Secondary Side 3

CN8850, CN8851

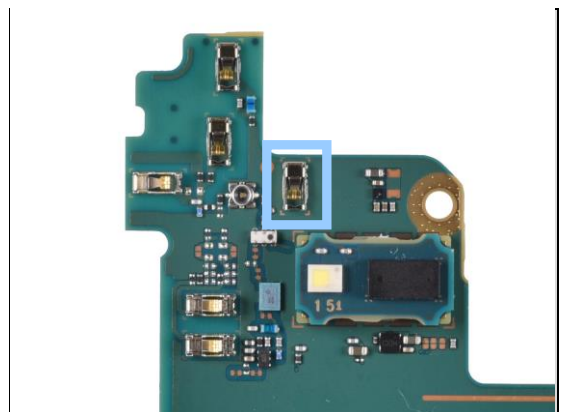
Replace if mechanically damaged. (NFC problem)



Secondary Side 4

CN4600

Replace if mechanically damaged. (Front Camera problem)

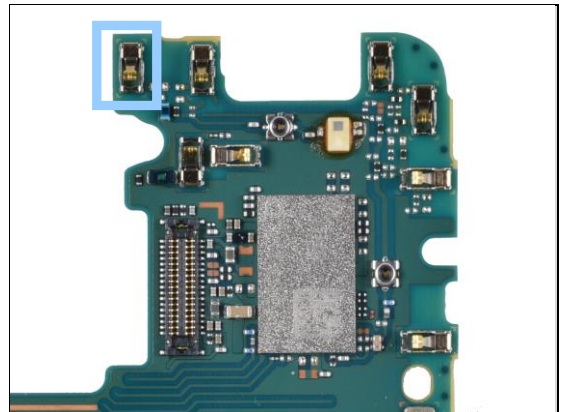


Additional Repair Info

Secondary Side 5

CN4755

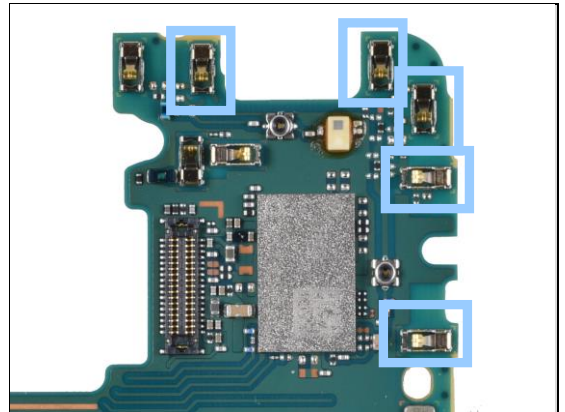
Replace if mechanically damaged. (No or bad network)



Secondary Side 6

CN4629, CN4625, CN4626, CN4627, CN4628

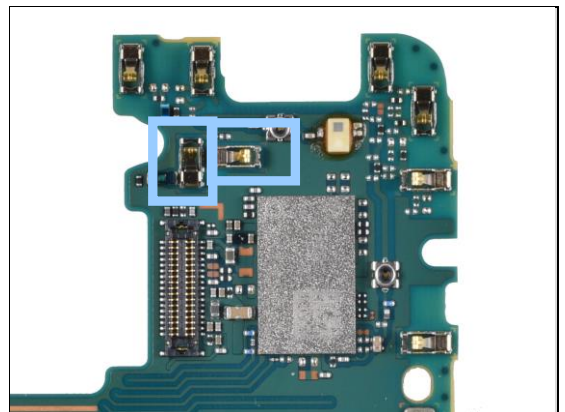
Replace if mechanically damaged. (Wi-Fi/Bluetooth problem)



Secondary Side 7

CN3505, CN3506

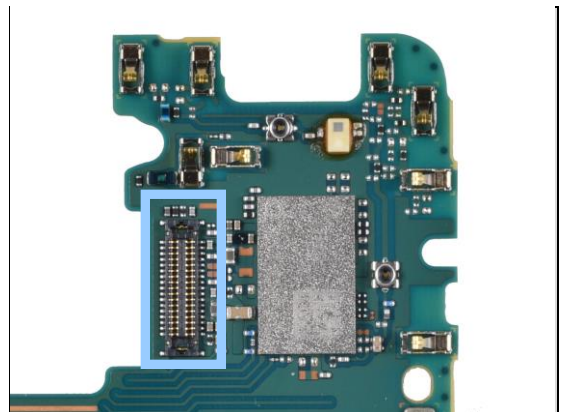
Replace if mechanically damaged. (Ear speaker problem)



Secondary Side 8

CN7300

Replace if mechanically damaged. (Main Camera problem)

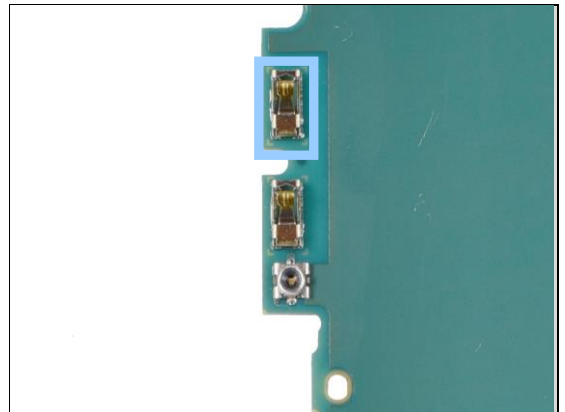


Additional Repair Info

Secondary Side 9

CN4750

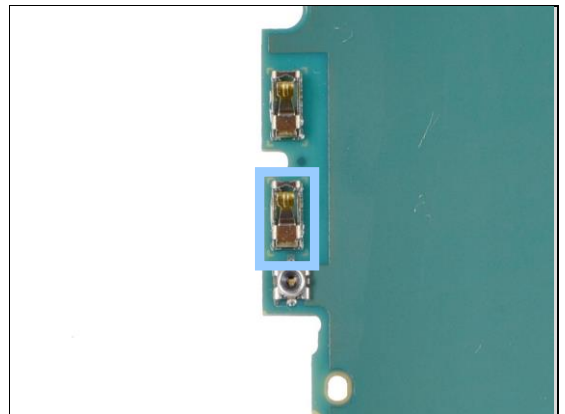
Replace if mechanically damaged. (No or bad network)



Secondary Side 10

CN4631

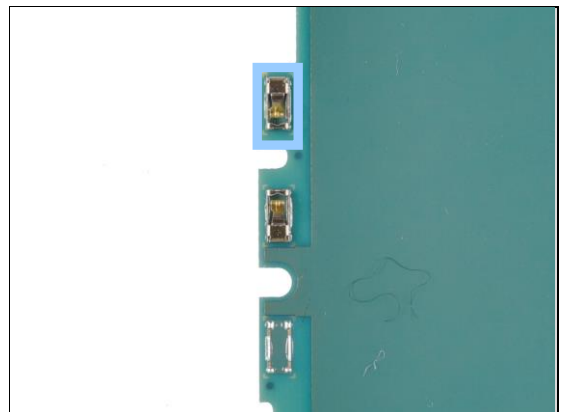
Replace if mechanically damaged. (No or bad network, Wi-Fi/Bluetooth problem)



Secondary Side 11

CN4633

Replace if mechanically damaged. (No or bad network, Wi-Fi/Bluetooth problem)



Secondary Side 12

CN4735

Replace if mechanically damaged. (No or bad network)

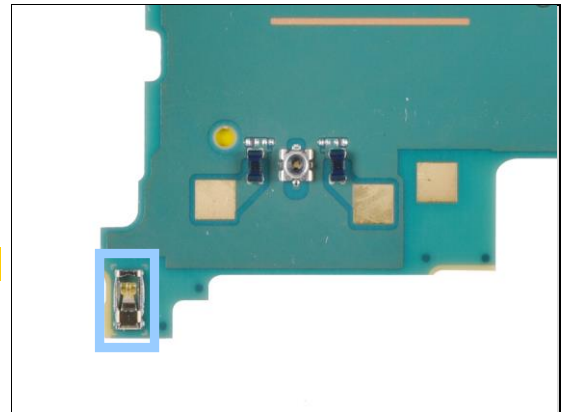


Additional Repair Info

Secondary Side 13

CN4700

Replace if mechanically damaged. (No or bad network)



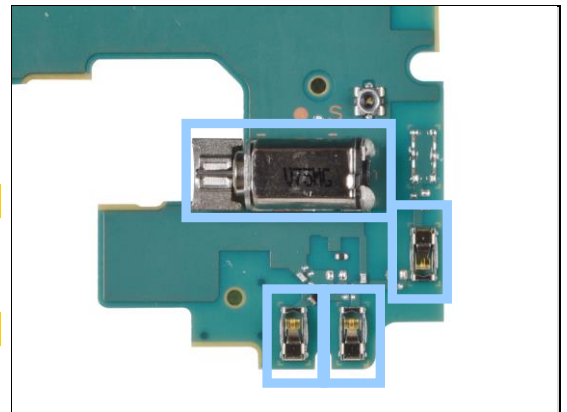
Secondary Side 14

CN4725, CN4765, CN4775

Replace if mechanically damaged. (No or bad network)

M5103

Replace if mechanically damaged. (Vibrator problem)



Secondary Side 15

CN4715, CN4722, CN4731

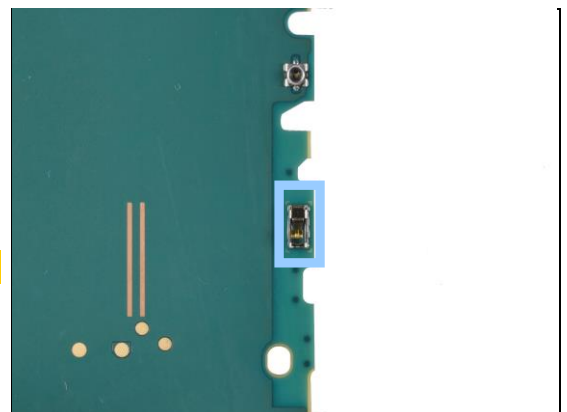
Replace if mechanically damaged. (No or bad network)



Secondary Side 16

CN4780

Replace if mechanically damaged. (No or bad network)



5 Revision History

Rev.	Date	Changes/Comments
1	2018-03-09	Initial release