

Proprietary data, Company confidential.
all rights reserved

Als Betriebsgeheimnis anvertraut
alle Rechte vorbehalten

1	2	3	4	5	6	7	8	9	10	11	12	13	14	15
A														A
B														B
C														C
D														D
E														E
F														F
G														

HIERARCHY	SHEET	PDF-SHEET
A5B00900205296-34110	index	sheet 1
	netlist1	sheet 2
	poslist1	sheet 3
	page1	----
	sheet1	sheet 4
	sheet4	sheet 5
	sheet10	sheet 6
	sheet11	sheet 7
	sheet12	sheet 8
	sheet13	sheet 9
	sheet14	sheet 10
	sheet15	sheet 11
	sheet16	sheet 12
	sheet17	sheet 13
	sheet19	sheet 14
	sheet21	sheet 15
	sheet22	sheet 16
	sheet23	sheet 17
	sheet27	sheet 18
	sheet28	sheet 19
	sheet51	sheet 20
	sheet71	sheet 21
	sheet72	sheet 22

				DATE	22.12.2004	Polaris B2+ Board Variante 1 TOP HIERARCHY LEVEL SCHEMATIC	1:1
				USER	Nolte		
				APPR'D			
				MD PD HW 4 Ulm			
				BENQ mobile		239996	index
2	34574	15.12.2005	Nol				
1	34111	02.12.2005	Nol				
VERS.	CHANGE NUMBER	DATE	NAME	(Created by BOM number: A5B00900205298-34574)			

	1	2	3	4	5	6	7	8	9	10			
A	1.5V_DSP /sheet13 12 A /sheet11 10 C	/sheet10 6 G /sheet12 15 E /sheet12 7 A	/sheet4 10 F /sheet10 14 E /sheet51 2 C	CTS /sheet15 11 A /sheet15 9 E	DISP_D5 /sheet10 3 C /sheet22 9 C	I2C_DAT /sheet13 3 F /sheet10 14 E	LIGHT_KP /sheet27 2 B /sheet28 4 A	PM_RINGIN /sheet13 3 E /sheet10 8 B	RF_BAND_SW /sheet4 2 E /sheet4 4 E /sheet10 7 B /sheet71 7 F	RX /sheet15 11 B /sheet15 9 E	/sheet71 4 B /sheet71 7 F USB_D+ /sheet15 11 D /sheet10 13 C	VDD_RF1 /sheet13 8 C /sheet4 4 D /sheet4 2 D /sheet71 11 A /sheet72 7 C	A
	1.5V_UC /sheet13 11 A /sheet11 7 A /sheet11 10 C	AKKU_TYP /sheet14 7 C /sheet10 11 B	BT_PCM_SYNC /sheet4 10 F /sheet10 14 E /sheet51 2 C	D(0:15) /sheet10 10 G /sheet12 15 B /sheet12 4 D	DISP_D6 /sheet10 3 C /sheet22 9 C	I2S2_CLK0_TX /sheet13 8 F /sheet10 14 E	LIGHT_PWM1 /sheet13 7 D /sheet23 1 B	PM_RTC_INT /sheet13 2 C /sheet10 4 F	SDCLKI /sheet10 7 G /sheet12 8 B	SDCLKO /sheet10 6 G /sheet12 8 C	USB_D- /sheet15 11 D /sheet10 13 C	VDD_RF2 /sheet13 8 C /sheet4 4 D /sheet4 2 D /sheet71 12 D /sheet71 8 A /sheet71 10 A /sheet71 8 F /sheet71 11 C /sheet71 9 A /sheet71 8 A /sheet71 9 F /sheet71 10 B /sheet71 8 F	
	1.8V_MEM1 /sheet13 8 B /sheet11 9 D /sheet12 9 E	BA0 /sheet12 7 C /sheet12 7 F	BT_RESET /sheet13 7 D /sheet4 10 F /sheet51 2 D	D(3) /page1 3 C	DISP_D7 /sheet10 3 C /sheet22 9 C	I2S2_CLK1_RX /sheet13 3 F /sheet10 14 E	LIGHT_PWM2 /sheet13 7 D /sheet28 4 B	PM_SIN26M /sheet13 3 E /sheet4 4 C /sheet4 2 C /sheet71 13 C	RF_CLK /sheet4 4 A /sheet4 2 A /sheet10 8 B /sheet71 15 E	SENSE_IN1 /sheet13 12 F /sheet13 2 D	SENSE_IN2 /sheet13 12 F /sheet13 2 D	VAFL /sheet13 1 D /sheet10 11 A	
	1.8V_MEM2 /sheet13 8 B /sheet13 8 C /sheet12 7 F	BA1 /sheet12 7 C /sheet12 7 F	BT_RTS /sheet4 10 E /sheet10 13 D /sheet51 1 C	DB_ETMCLK /sheet10 3 E	DISP_RD /sheet10 3 C /sheet22 9 B	I2S2_RX /sheet13 3 F /sheet10 14 F	MIC1A /sheet10 10 A /sheet19 7 B	PM_SSC_CS /sheet13 3 F /sheet10 7 B	RF_DAT /sheet4 4 A /sheet4 2 A /sheet10 8 B /sheet71 15 D	RF_FE_CTR_DCS /sheet4 2 B /sheet4 4 B /sheet10 7 B /sheet71 2 C	SIM_CLK /sheet16 10 C /sheet10 13 C	VAUDREGA /sheet13 3 E /sheet13 8 C /sheet13 3 C	
	1.8V_MEM2_F /sheet12 8 E /sheet12 9 D /sheet12 8 G /sheet12 8 B /sheet12 7 B /sheet12 8 F /sheet12 12 B	BATT+ /sheet14 7 C /sheet13 3 E /sheet13 12 G /sheet13 1 A /sheet13 2 B /sheet10 15 F /sheet21 6 C /sheet71 1 E /sheet71 7 E	BT_RX /sheet4 10 E /sheet10 14 D /sheet51 2 C	DB_ETMSYNC /sheet10 4 E	DISP_RESET1 /sheet10 3 D /sheet22 9 B	I2S2_TX /sheet13 8 F /sheet10 14 E	MICBIAS_F /sheet15 11 C /sheet19 7 A /sheet19 6 C	PM_SSC_MRST /sheet13 7 F /sheet10 14 D	PM_SSC_MTSR /sheet13 3 F /sheet10 14 D	SIM_RST /sheet16 10 C /sheet10 13 C	VBOOST /sheet13 12 E /sheet13 12 C /sheet27 2 C /sheet22 9 B	VREFEXS_GND /sheet13 2 E /sheet13 4 F	
	2.65V /page1 2 C /sheet15 11 E /sheet14 7 C /sheet13 3 D /sheet13 8 B /sheet11 9 B /sheet11 2 B /sheet11 4 A /sheet11 7 B /sheet11 4 A /sheet11 4 A /sheet10 15 D /sheet10 2 A /sheet10 12 A /sheet51 4 B /sheet51 3 A /sheet51 5 B	BATT+_F /sheet15 11 E /sheet13 3 C /sheet13 3 B /sheet13 3 A /sheet13 3 B /sheet13 3 C /sheet13 3 C /sheet13 2 A /sheet27 2 C	BT_TX /sheet4 10 E /sheet10 14 F /sheet51 1 C	DB_TDO /sheet10 3 D	EXTBOOST_EN /sheet13 10 D /sheet13 7 D	KB_ON_OFF /sheet13 2 C /sheet27 2 B	MICEB /sheet15 11 B /sheet10 10 A	PM_WADOG /sheet13 2 D /sheet10 6 B	RF_I /sheet4 2 B /sheet4 4 B /sheet10 9 B /sheet71 9 G	SIM_IO /sheet16 10 C /sheet10 13 C	VBAT /sheet10 11 B /sheet10 15 F	VDD_USB /sheet13 8 B /sheet11 7 A	
	2.9V /sheet13 11 D /sheet13 8 B /sheet13 10 D /sheet4 14 F /sheet11 7 A /sheet11 7 A /sheet12 4 G /sheet51 5 B /sheet22 9 B	BC0 /sheet10 7 G /sheet12 15 E /sheet12 7 C	CAS /sheet10 6 G /sheet12 15 E /sheet12 7 C	DB_TMS /page1 3 C /sheet10 3 D	F32K /sheet10 2 F	KP_IN0 /sheet13 7 C /sheet10 5 G /sheet27 2 C	MON1 /sheet10 3 D	PM_WADOG2 /sheet13 2 D	RF_IX /sheet4 2 B /sheet4 4 B /sheet10 9 B /sheet71 10 G	STEPDOWN_GND /sheet13 8 H /sheet13 11 A /sheet13 6 F /sheet13 11 A /sheet13 3 B	VBUCK /sheet13 12 A /sheet13 3 B	VMICP /sheet10 10 A /sheet19 8 C	
	A(0:24) /sheet10 12 G /sheet12 15 E /sheet12 8 F /sheet12 4 C	BC1 /sheet10 7 G /sheet12 15 F /sheet12 7 C	CHARGE_CNTRL /sheet13 10 G /sheet13 7 D	DB_TRACEPKT2 /sheet10 3 E	FLASH_RESET /sheet13 7 C /sheet10 4 F /sheet12 8 B	KP_IN1 /sheet10 5 G /sheet27 2 C /sheet27 5 E	MONO1_LP_OUT /sheet13 7 E /sheet13 3 E	POWER /sheet15 11 B /sheet13 10 G	RAS /sheet10 6 G /sheet12 15 E /sheet12 7 C	RF_Q /sheet4 2 B /sheet4 4 B /sheet10 9 B /sheet71 10 G	STEPUP_GND /sheet13 12 C /sheet13 12 F /sheet13 9 H	VREFEXS_GND /sheet13 2 E /sheet13 4 F	
	AC_CTS /sheet15 13 E /sheet10 14 C	BFCLKI /sheet10 7 G /sheet12 8 B	BT_VCXOEN /sheet13 2 D /sheet4 10 F /sheet51 2 D	DB_TRACEPKT4 /sheet10 4 E	F_VPP /sheet12 12 B /sheet12 11 B /sheet12 7 B	KP_IN2 /sheet10 5 G /sheet27 2 C /sheet27 5 D	MONO1_OUT /sheet17 6 A /sheet13 8 E	RD /sheet10 7 G /sheet12 15 E /sheet12 7 B	RF_QX /sheet4 4 B /sheet4 2 B /sheet10 9 B /sheet71 10 G	STEREO1_OUT /sheet15 11 B /sheet13 7 E	VCC_LIGHT /sheet27 2 C	WAIT /sheet10 6 G /sheet12 8 B	
	AC_DCD /sheet15 13 E /sheet10 6 B	BFCLKO /sheet10 7 G /sheet12 8 B	CHARGE_SOURCE /sheet13 10 G /sheet13 7 D	DISP_CD /sheet10 3 C /sheet22 9 C	HF_OUT /sheet71 1 B /sheet72 2 B	KP_IN3 /sheet10 5 G /sheet27 2 C /sheet27 2 D	MONO2_LP_OUT /sheet13 7 E /sheet13 3 E	OSC32K /sheet10 2 F	REC_OUT1_SGOLD2 /sheet17 6 C /sheet10 10 A	RF_RAMP1 /sheet4 2 C /sheet4 4 C /sheet10 9 A /sheet71 1 F	TRIG_IN /sheet10 3 D	VDD_BT /sheet13 8 C /sheet10 15 A /sheet10 11 B /sheet71 15 C	
B	1.5V_DSP /sheet13 12 A /sheet11 10 C	/sheet10 6 G /sheet12 15 E /sheet12 7 A	/sheet4 10 F /sheet10 14 E /sheet51 2 C	CTS /sheet15 11 A /sheet15 9 E	DISP_D5 /sheet10 3 C /sheet22 9 C	I2C_DAT /sheet13 3 F /sheet10 14 E	LIGHT_KP /sheet27 2 B /sheet28 4 A	PM_RINGIN /sheet13 3 E /sheet10 8 B	RF_BAND_SW /sheet4 2 E /sheet4 4 E /sheet10 7 B /sheet71 7 F	RX /sheet15 11 B /sheet15 9 E	/sheet71 4 B /sheet71 7 F USB_D+ /sheet15 11 D /sheet10 13 C	VDD_RF1 /sheet13 8 C /sheet4 4 D /sheet4 2 D /sheet71 11 A /sheet72 7 C	B
	1.5V_UC /sheet13 11 A /sheet11 7 A /sheet11 10 C	AKKU_TYP /sheet14 7 C /sheet10 11 B	BT_PCM_SYNC /sheet4 10 F /sheet10 14 E /sheet51 2 C	D(0:15) /sheet10 10 G /sheet12 15 B /sheet12 4 D	DISP_D6 /sheet10 3 C /sheet22 9 C	I2S2_CLK0_TX /sheet13 8 F /sheet10 14 E	LIGHT_PWM1 /sheet13 7 D /sheet23 1 B	PM_RTC_INT /sheet13 2 C /sheet10 4 F	SDCLKI /sheet10 7 G /sheet12 8 B	SDCLKO /sheet10 6 G /sheet12 8 C	USB_D- /sheet15 11 D /sheet10 13 C	VDD_RF2 /sheet13 8 C /sheet4 4 D /sheet4 2 D /sheet71 12 D /sheet71 8 A /sheet71 10 A /sheet71 8 F /sheet71 11 C /sheet71 9 A /sheet71 8 A /sheet71 9 F /sheet71 10 B /sheet71 8 F	
	1.8V_MEM1 /sheet13 8 B /sheet11 9 D /sheet12 9 E	BA0 /sheet12 7 C /sheet12 7 F	BT_RESET /sheet13 7 D /sheet4 10 F /sheet51 2 D	D(3) /page1 3 C	DISP_D7 /sheet10 3 C /sheet22 9 C	I2S2_CLK1_RX /sheet13 3 F /sheet10 14 E	LIGHT_PWM2 /sheet13 7 D /sheet28 4 B	PM_SIN26M /sheet13 3 E /sheet4 4 C /sheet4 2 C /sheet71 13 C	RF_CLK /sheet4 4 A /sheet4 2 A /sheet10 8 B /sheet71 15 E	SENSE_IN1 /sheet13 12 F /sheet13 2 D	SENSE_IN2 /sheet13 12 F /sheet13 2 D	VAFL /sheet13 1 D /sheet10 11 A	
	1.8V_MEM2 /sheet13 8 B /sheet13 8 C /sheet12 7 F	BA1 /sheet12 7 C /sheet12 7 F	BT_RTS /sheet4 10 E /sheet10 13 D /sheet51 1 C	DB_ETMCLK /sheet10 3 E	DISP_RD /sheet10 3 C /sheet22 9 B	I2S2_RX /sheet13 3 F /sheet10 14 F	MIC1A /sheet10 10 A /sheet19 7 B	PM_SSC_CS /sheet13 3 F /sheet10 7 B	RF_DAT /sheet4 4 A /sheet4 2 A /sheet10 8 B /sheet71 15 D	RF_FE_CTR_DCS /sheet4 2 B /sheet4 4 B /sheet10 7 B /sheet71 2 C	SIM_CLK /sheet16 10 C /sheet10 13 C	VAUDREGA /sheet13 3 E /sheet13 8 C /sheet13 3 C	
	1.8V_MEM2_F /sheet12 8 E /sheet12 9 D /sheet12 8 G /sheet12 8 B /sheet12 7 B /sheet12 8 F /sheet12 12 B	BATT+ /sheet14 7 C /sheet13 3 E /sheet13 12 G /sheet13 1 A /sheet13 2 B /sheet10 15 F /sheet21 6 C /sheet71 1 E /sheet71 7 E	BT_RX /sheet4 10 E /sheet10 14 D /sheet51 2 C	DB_ETMSYNC /sheet10 4 E	DISP_RESET1 /sheet10 3 D /sheet22 9 B	I2S2_TX /sheet13 8 F /sheet10 14 E	MICBIAS_F /sheet15 11 C /sheet19 7 A /sheet19 6 C	PM_SSC_MRST /sheet13 7 F /sheet10 14 D	PM_SSC_MTSR /sheet13 3 F /sheet10 14 D	SIM_RST /sheet16 10 C /sheet10 13 C	VBOOST /sheet13 12 E /sheet13 12 C /sheet27 2 C /sheet22 9 B	VREFEXS_GND /sheet13 2 E /sheet13 4 F	
	2.65V /page1 2 C /sheet15 11 E /sheet14 7 C /sheet13 3 D /sheet13 8 B /sheet11 9 B /sheet11 2 B /sheet11 4 A /sheet11 7 B /sheet11 4 A /sheet11 4 A /sheet10 15 D /sheet10 2 A /sheet10 12 A /sheet51 4 B /sheet51 3 A /sheet51 5 B	BATT+_F /sheet15 11 E /sheet13 3 C /sheet13 3 B /sheet13 3 A /sheet13 3 B /sheet13 3 C /sheet13 3 C /sheet13 2 A /sheet27 2 C	BT_TX /sheet4 10 E /sheet10 14 F /sheet51 1 C	DB_TDO /sheet10 3 D	EXTBOOST_EN /sheet13 10 D /sheet13 7 D	KB_ON_OFF /sheet13 2 C /sheet27 2 B	MICEB /sheet15 11 B /sheet10 10 A	PM_WADOG /sheet13 2 D /sheet10 6 B	RF_I /sheet4 2 B /sheet4 4 B /sheet10 9 B /sheet71 9 G	SIM_IO /sheet16 10 C /sheet10 13 C	VBAT /sheet10 11 B /sheet10 15 F	VDD_USB /sheet13 8 B /sheet11 7 A	
	2.9V /sheet13 11 D /sheet13 8 B /sheet13 10 D /sheet4 14 F /sheet11 7 A /sheet11 7 A /sheet12 4 G /sheet51 5 B /sheet22 9 B	BC0 /sheet10 7 G /sheet12 15 E /sheet12 7 C	CAS /sheet10 6 G /sheet12 15 E /sheet12 7 C	DB_TMS /page1 3 C /sheet10 3 D	F32K /sheet10 2 F	KP_IN0 /sheet13 7 C /sheet10 5 G /sheet27 2 C	MON1 /sheet10 3 D	PM_WADOG2 /sheet13 2 D	RF_IX /sheet4 2 B /sheet4 4 B /sheet10 9 B /sheet71 10 G	STEPDOWN_GND /sheet13 8 H /sheet13 11 A /sheet13 6 F /sheet13 11 A /sheet13 3 B	VBUCK /sheet13 12 A /sheet13 3 B	VSIM1CTRL /sheet13 9 D /sheet13 7 D	
	A(0:24) /sheet10 12 G /sheet12 15 E /sheet12 8 F /sheet12 4 C	BC1 /sheet10 7 G /sheet12 15 F /sheet12 7 C	CHARGE_CNTRL /sheet13 10 G /sheet13 7 D	DB_TRACEPKT2 /sheet10 3 E	FLASH_RESET /sheet13 7 C /sheet10 4 F /sheet12 8 B	KP_IN1 /sheet10 5 G /sheet27 2 C /sheet27 5 E	MONO1_LP_OUT /sheet13 7 E /sheet13 3 E	POWER /sheet15 11 B /sheet13 10 G	RAS /sheet10 6 G /sheet12 15 E /sheet12 7 C	RF_Q /sheet4 2 B /sheet4 4 B /sheet10 9 B /sheet71 10 G	STEPUP_GND /sheet13 12 C /sheet13 12 F /sheet13 9 H	VREFEXS_GND /sheet13 2 E /sheet13 4 F	
	AC_CTS /sheet15 13 E /sheet10 14 C	BFCLKI /sheet10 7 G /sheet12 8 B	BT_VCXOEN /sheet13 2 D /sheet4 10 F /sheet51 2 D	DB_TRACEPKT4 /sheet10 4 E	F_VPP /sheet12 12 B /sheet12 11 B /sheet12 7 B	KP_IN2 /sheet10 5 G /sheet27 2 C /sheet27 5 D	MONO1_OUT /sheet17 6 A /sheet13 8 E	RD /sheet10 7 G /sheet12 15 E /sheet12 7 B	RF_QX /sheet4 4 B /sheet4 2 B /sheet10 9 B /sheet71 10 G	STEREO1_OUT /sheet15 11 B /sheet13 7 E	VCC_LIGHT /sheet27 2 C	WAIT /sheet10 6 G /sheet12 8 B	
	AC_DCD /sheet15 13 E /sheet10 6 B	BFCLKO /sheet10 7 G /sheet12 8 B											

				DATE	22.12.2004	Polaris B2+ Board Variante 1 TOP HIERARCHY LEVEL SCHEMATIC	1:1
				USER	Nolte		
				APPR'D			
				MD PD HW 4 Ulm		239996	poslist1
2	34574	15.12.2005	Nol	BENQ mobile			
1	34111	02.12.2005	Nol				
VERS.	CHANGE NUMBER	DATE	NAME	(Created by BOM number: A5B00900205298-34574)			

PAGE	BLOCK	STATUS
1	TOP HIERARCHICAL OVERVIEW	
2		
3	TABLE OF CONTENTS PROJECT	
4	DEFINITION OF HIT POINTS	
5-8	DEFINITION OF HIT POINTS	EMPTY
9	DEBUG CONNECTOR	EMPTY
10	SGOLD2	
11	SGOLD2 SUPPLY DOMAIN	
12	SDRAM FLASH	
13	MOZART / TWIGO	
14	BATTERY CONNECTOR	
15	IO-CONNECTOR	
16	SIM-CONNECTOR	
17	TWO SPEAKER SOLUTION	
19	MICROPHONE CIRCUIT 1	
21	VIBRA	
22	DISPLAY CONNECTOR	
23	DISPLAY/ KEYPAD BACKLIGHT CONTROL	
27	MMI CONNECTOR	
28	KEYPAD BACKLIGHT	
51	BLUETOOTH SOLUTION 2	
71	BRIGHT 6E	
72	ANTENNA CIRCUIT	

[illegible]

				DATE	22.12.2004	Polaris B2+ Board Variante 1 TOP HIERARCHY LEVEL SCHEMATIC	1:1
				USER	Notte		
				APPR'D			
				MD PD HW 4 Ulm		239996	sheet1
2	34574	15.12.2005	Nol	BENQ mobile			
1	34111	02.12.2005	Nol				
VERS.	CHANGE NUMBER	DATE	NAME	(Created by BOM number: A5B00900205298-34574)			

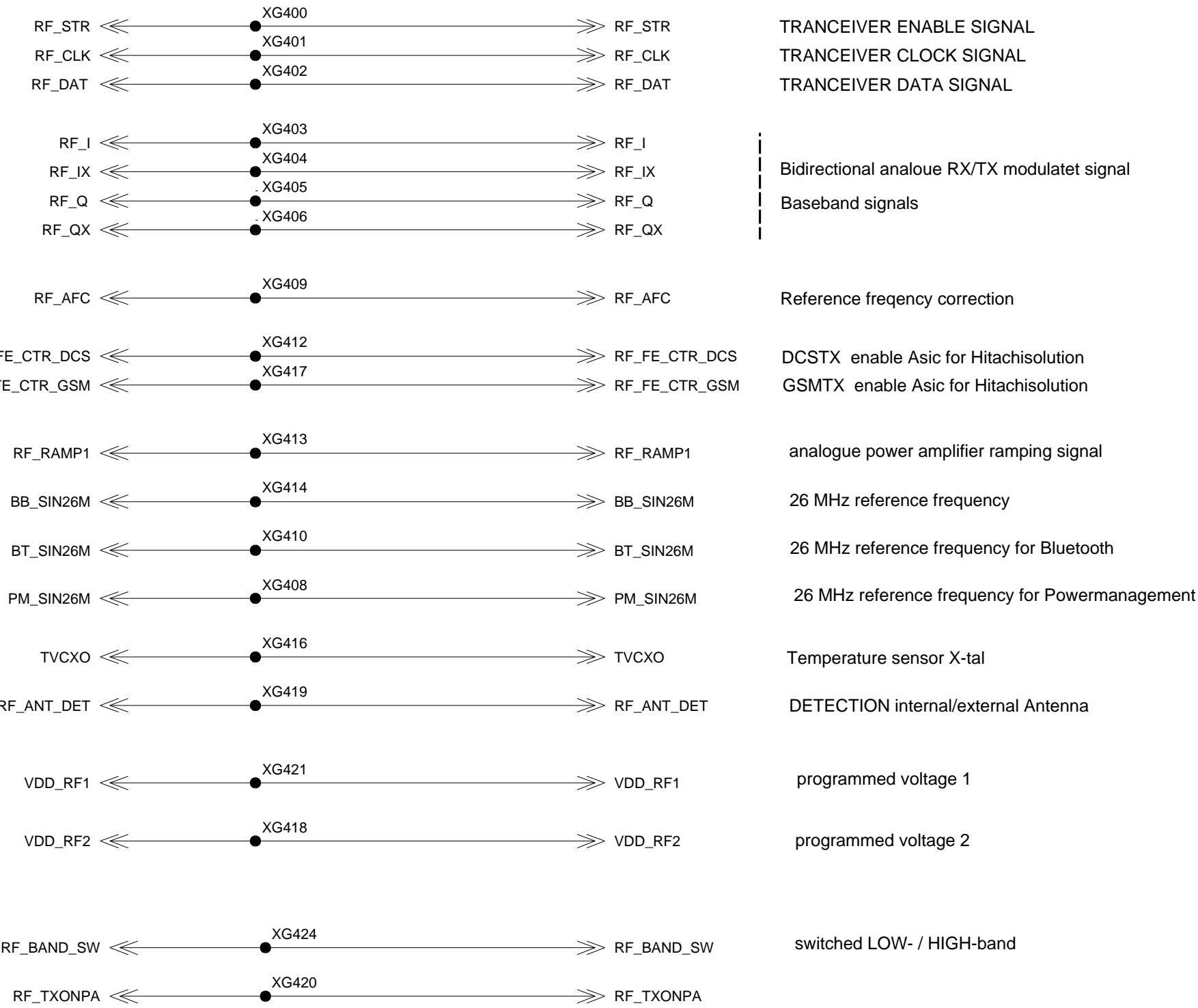
Proprietary data, Company confidential.
all rights reserved

Als Betriebsgeheimnis anvertraut
alle Rechte vorbehalten

HIT_POINTS LOGIK/HF_PART_1

HIT_POINTS LOGIK/HF

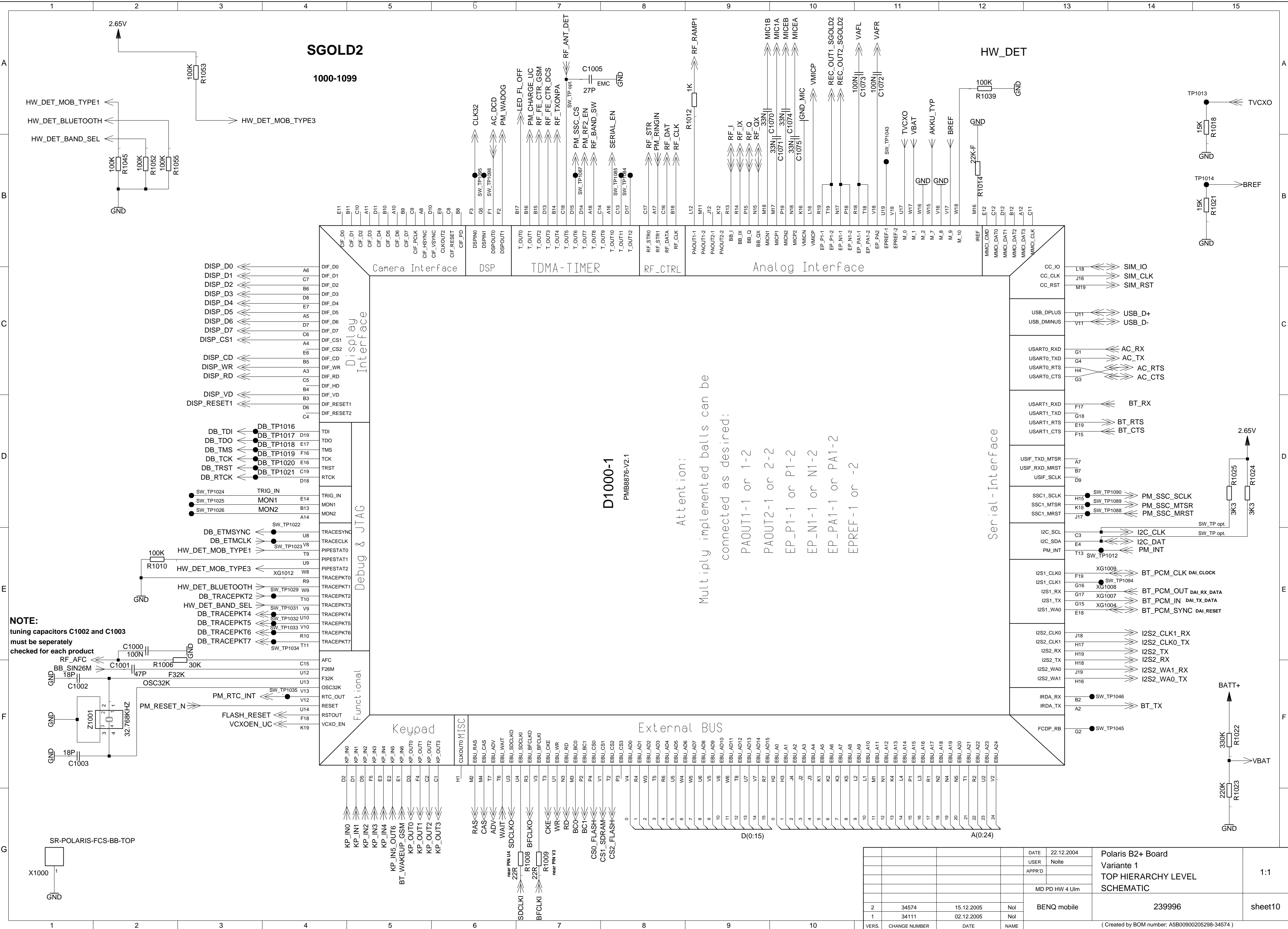
400-449



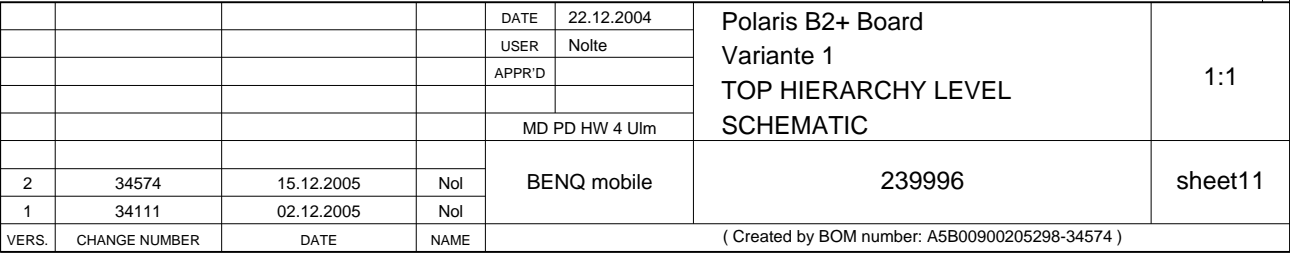
HIT_POINTS LOGIK/BLUETOOTH



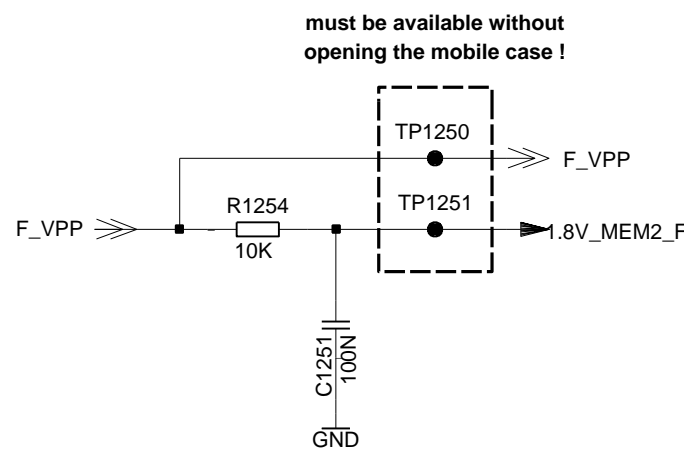
				DATE	22.12.2004	Polaris B2+ Board Variante 1 TOP HIERARCHY LEVEL SCHEMATIC	1:1
				USER	Nolte		
				APPR'D			
				MD PD HW 4 Ulm			
				BENQ mobile		239996	sheet4
2	34574	15.12.2005	Nol				
1	34111	02.12.2005	Nol				
VERS.	CHANGE NUMBER	DATE	NAME	(Created by BOM number: A5B00900205298-34574)			



				DATE	22.12.2004	Polaris B2+ Board Variante 1 TOP HIERARCHY LEVEL SCHEMATIC	1:1
				USER	Nolte		
				APPR'D			
				MD PD HW 4 Ulm			
2	34574	15.12.2005	Nol	BENQ mobile		239996	sheet10
1	34111	02.12.2005	Nol				
VERS.	CHANGE NUMBER	DATE	NAME	(Created by BOM number: A5B00900205298-34574)			



1200-1299



CKE	← ●	SW_TP1270
WR	← ●	SW_TP1271
RD	← ●	SW_TP1272
BC0	← ●	SW_TP1273
BC1	← ●	SW_TP1274
CS0_FLASH	← ●	SW_TP1275
CS1_SDRAM	← ●	SW_TP1276
CS2_FLASH	← ●	SW_TP1277

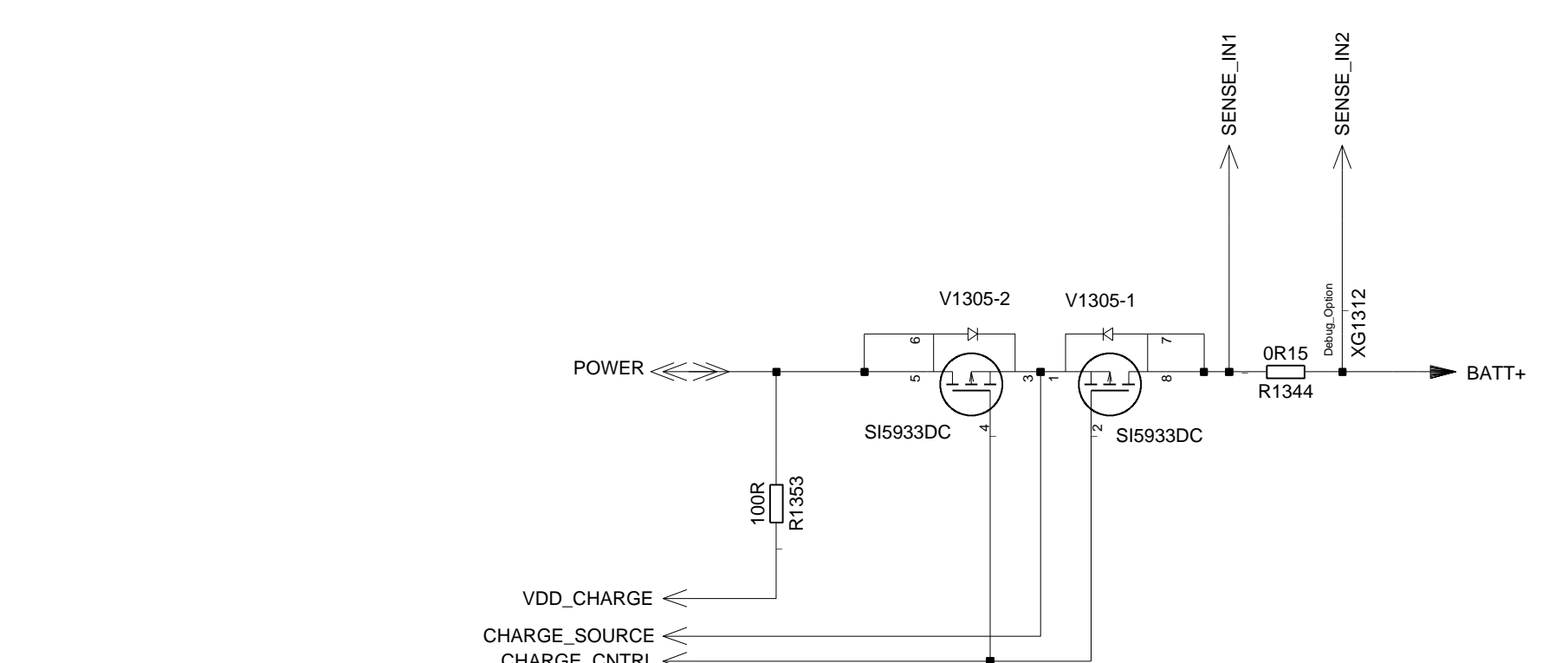
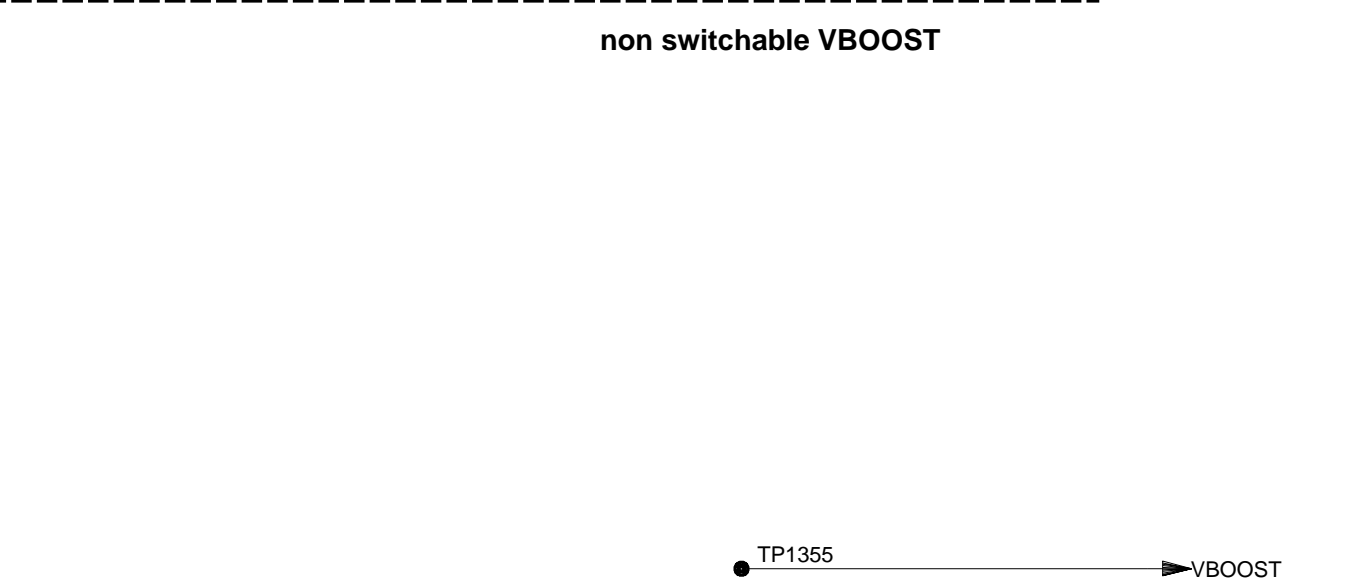
- 5) The BFCLKO & BFCLKI signal is a loop line from SGOLD2 to the Memory and back to SGOLD2. So avoid branches here as well. The same applies to SDCLKO & SDCLKI.

			DATE	22.12.2004	Polaris B2+ Board Variante 1 TOP HIERARCHY LEVEL SCHEMATIC	1:1
			USER	Nolte		
			APPRD			
			MD PD HW 4 Ulm			
2	34574	15.12.2005	Nol	BENQ mobile	239996	sheet12
1	34111	02.12.2005	Nol			
VERS.	CHANGE NUMBER	DATE	NAME (Created by BOM number: A5B00900205298-34574)			

Si nuestra expresa autorización, queda terminantemente prohibida la reproducción total o parcial de este documento, así como su uso indebido y/o su exhibición o comunicación terceros. De los infractores se exigirá el correspondiente resarcimiento de daños y perjuicios. Se reserva todos los derechos para el caso de la concesión de patente de invención o el registro de Modelo Industrial.

Copying of this document, and giving it to others and the use or communication of the contents thereof, are considered without express authority. Offenders are liable to the payment of damages. All rights are reserved in the event of the grant of a Patent or the registration of a utility model or Design.

Wiedergabe sowie Vervielfältigung dieses Unterlage, Verwertung und Mitteilung seines Inhalts nicht gestattet, soweit nicht ausdrücklich zugestanden. Zweifelsfalls sind die Rechte vorbehalten. Alle Rechte vorbehalten. Falls der Patenterteilung oder EG-Eintragung vorbehalten



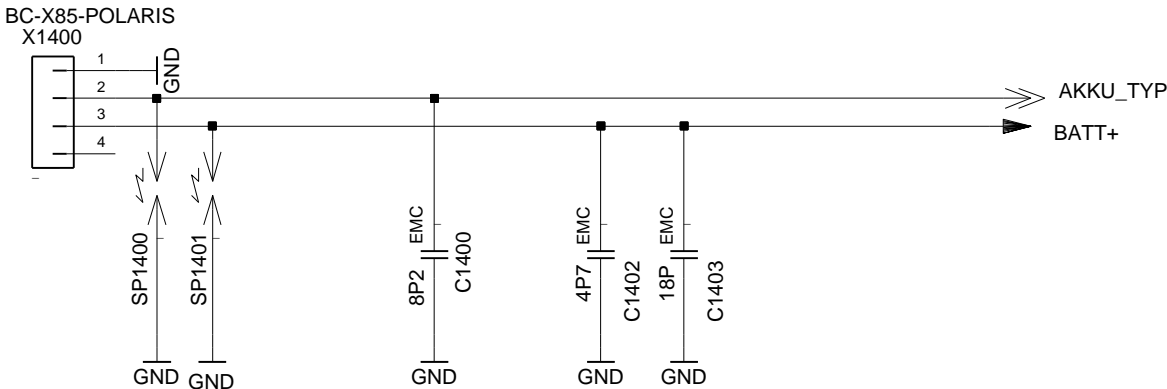
					DATE	22.12.2004	Polaris B2+ Board Variante 1 TOP HIERARCHY LEVEL SCHEMATIC	1:1
					USER	Notte		
					APPR D			
					MD PD HW 4 Ulm			
2	34574	15.12.2005	Nkl		BENQ mobile		239996	sheet13
1	34111	02.12.2005	Nkl					
VERS	CHANGE NUMBER	DATE	NAME		(Created by BOM number: A5B0900205298-34574)			

Proprietary data, company confidential.
All rights reserved

Als Betriebsgeheimnis anvertraut
Alle Rechte vorbehalten

BATTERY_CONNECTOR

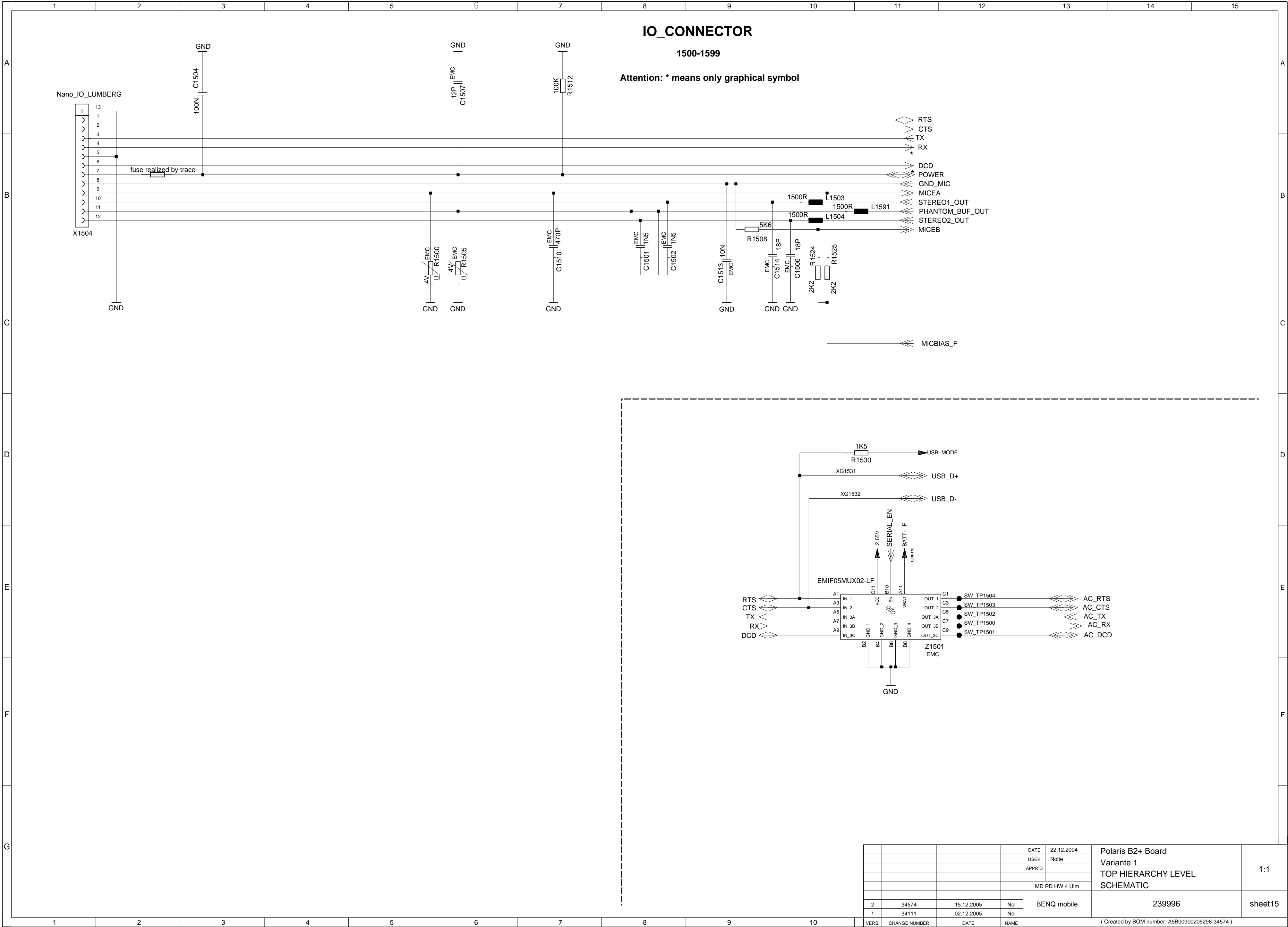
1400-1449



				DATE	22.12.2004	Polaris B2+ Board Variante 1 TOP HIERARCHY LEVEL SCHEMATIC	1:1
				USER	Nolte		
				APPR'D			
				MD PD HW 4 Ulm			
2	34574	15.12.2005	Nol	BENQ mobile		239996	sheet14
1	34111	02.12.2005	Nol				
VERS.	CHANGE NUMBER	DATE	NAME	(Created by BOM number: A5B00900205298-34574)			

Proprietary data, Company confidential.
all rights reserved

Als Betriebsgeheimnis anvertraut
alle Rechte vorbehalten



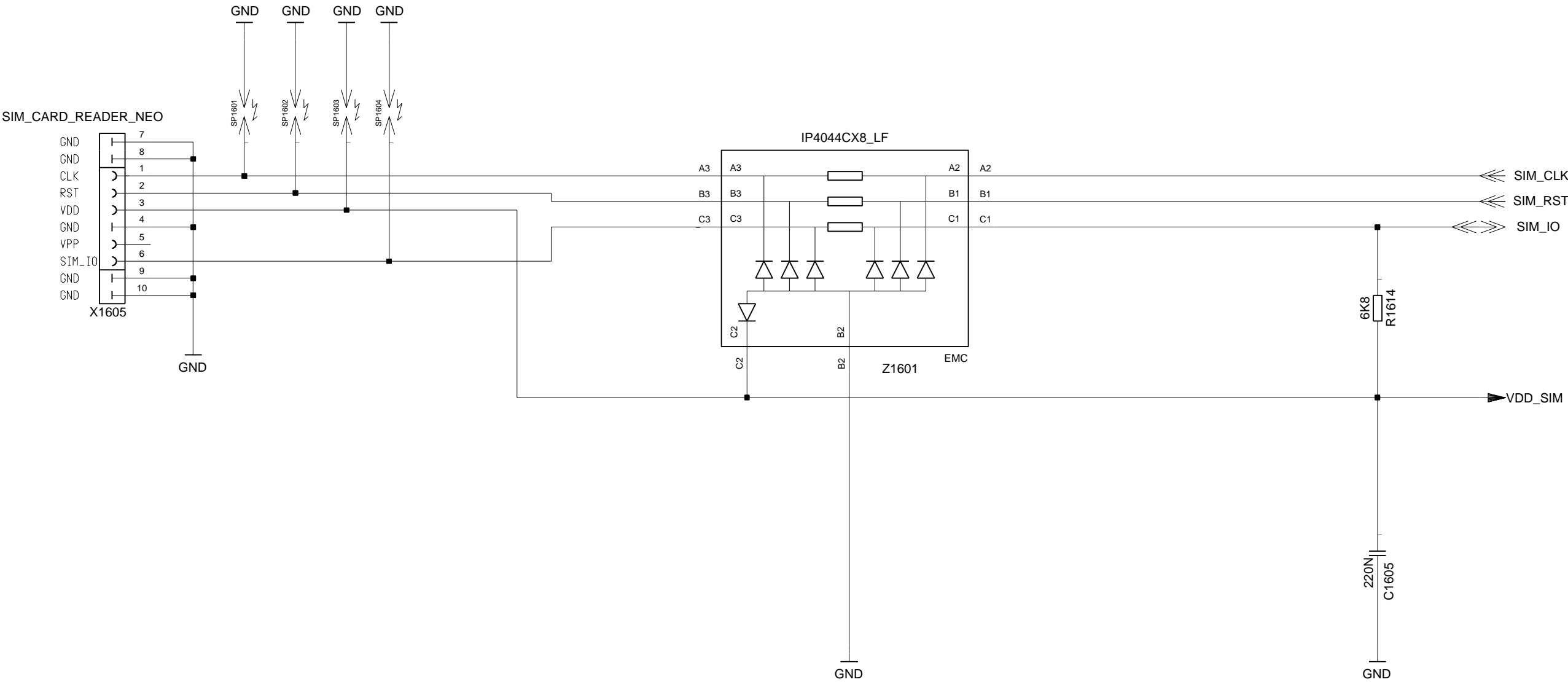
				DATE	22.12.2004	Polaris B2+ Board Variante 1 TOP HIERARCHY LEVEL SCHEMATIC	1:1
				USER	Nolte		
				APPR'D			
				MD PD HW 4 Ulm			
2	34574	15.12.2005	Nol	BENQ mobile		239996	sheet15
1	34111	02.12.2005	Nol				
VERS.	CHANGE NUMBER	DATE	NAME	(Created by BOM number: A5B00900205298-34574)			

Proprietary data, company confidential.
All rights reserved

Als Betriebsgeheimnis anvertraut
Alle Rechte vorbehalten

SIM_CONNECTOR

1600-1659



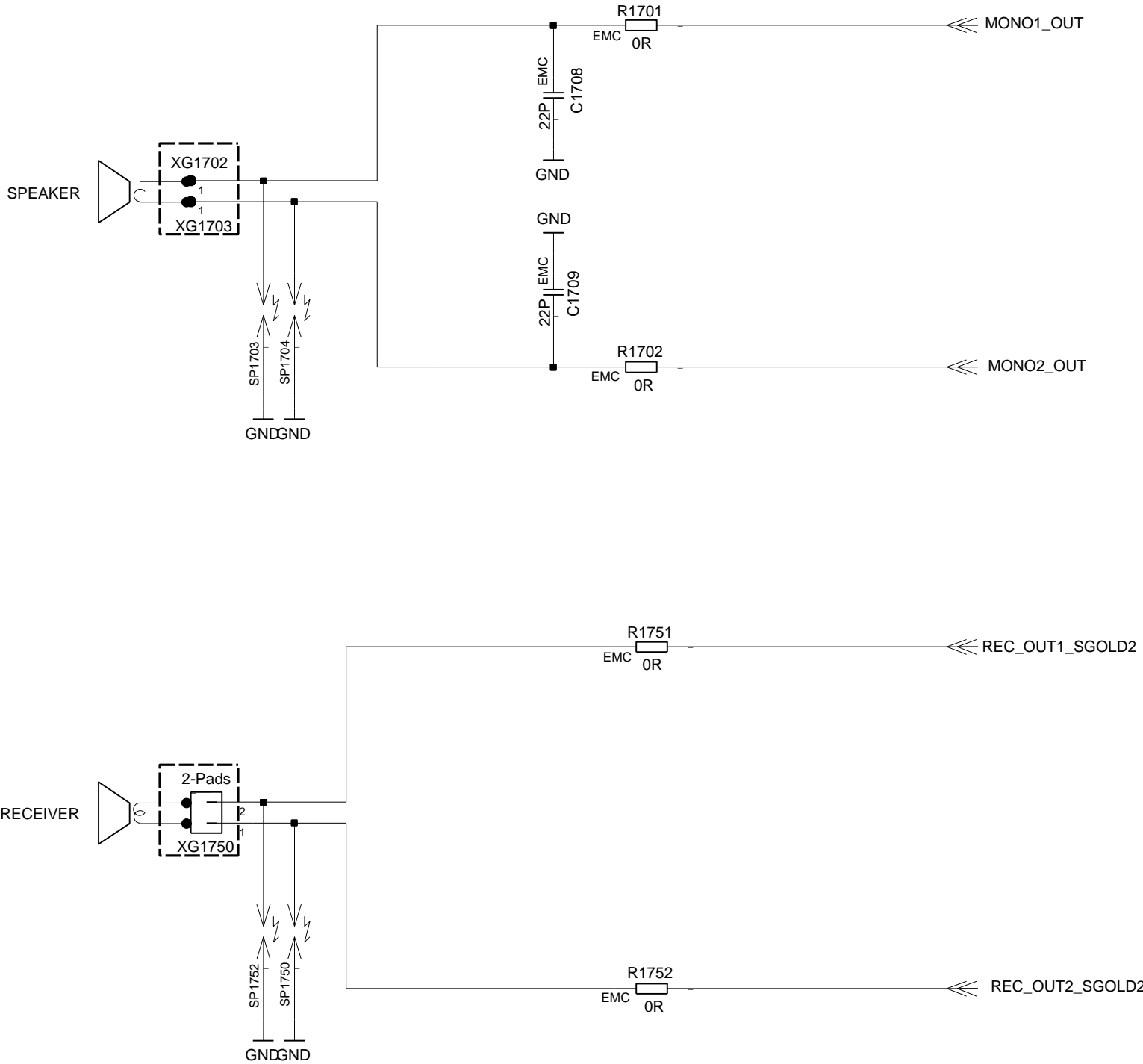
				DATE	22.12.2004	Polaris B2+ Board Variante 1 TOP HIERARCHY LEVEL SCHEMATIC	1:1
				USER	Nolte		
				APPR'D			
				MD PD HW 4 Ulm			
2	34574	15.12.2005	Nol	BENQ mobile		239996	sheet16
1	34111	02.12.2005	Nol				
VERS.	CHANGE NUMBER	DATE	NAME	(Created by BOM number: A5B00900205298-34574)			

Proprietary data, company confidential.
All rights reserved

Als Betriebsgeheimnis anvertraut
Alle Rechte vorbehalten

SPEAKER

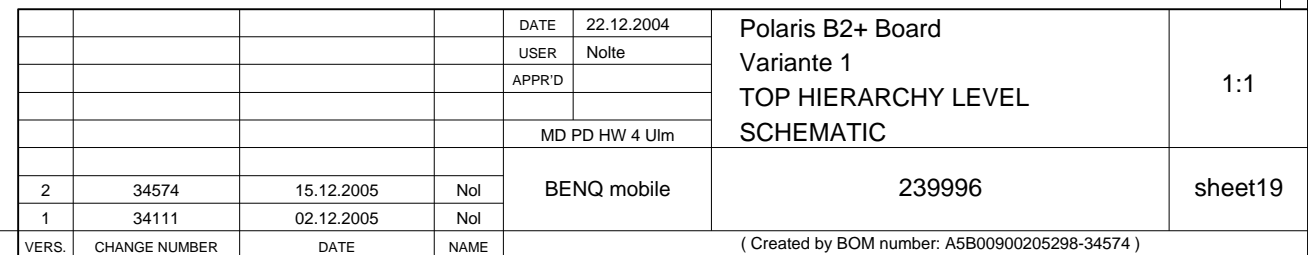
1700-1759



				DATE	22.12.2004	Polaris B2+ Board Variante 1 TOP HIERARCHY LEVEL SCHEMATIC	1:1
				USER	Nolte		
				APPR'D			
				MD PD HW 4 Ulm			
				BENQ mobile		239996	sheet17
2	34574	15.12.2005	Nol				
1	34111	02.12.2005	Nol				
VERS.	CHANGE NUMBER	DATE	NAME	(Created by BOM number: A5B00900205298-34574)			

Als Betriebsgeheimnis anvertraut
Alle Rechte vorbehalten

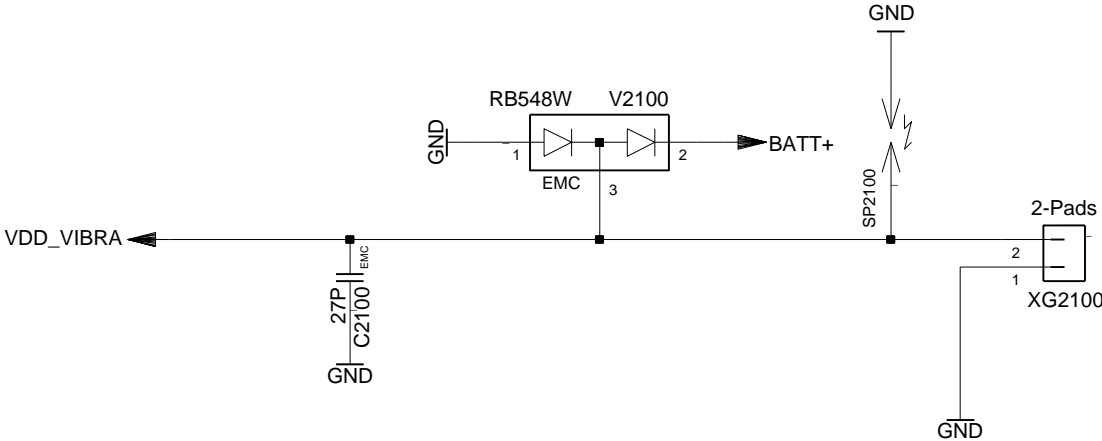
1900-1999



Proprietary data, company confidential.
All rights reserved

Als Betriebsgeheimnis anvertraut
Alle Rechte vorbehalten

VIBRA
2100-2125



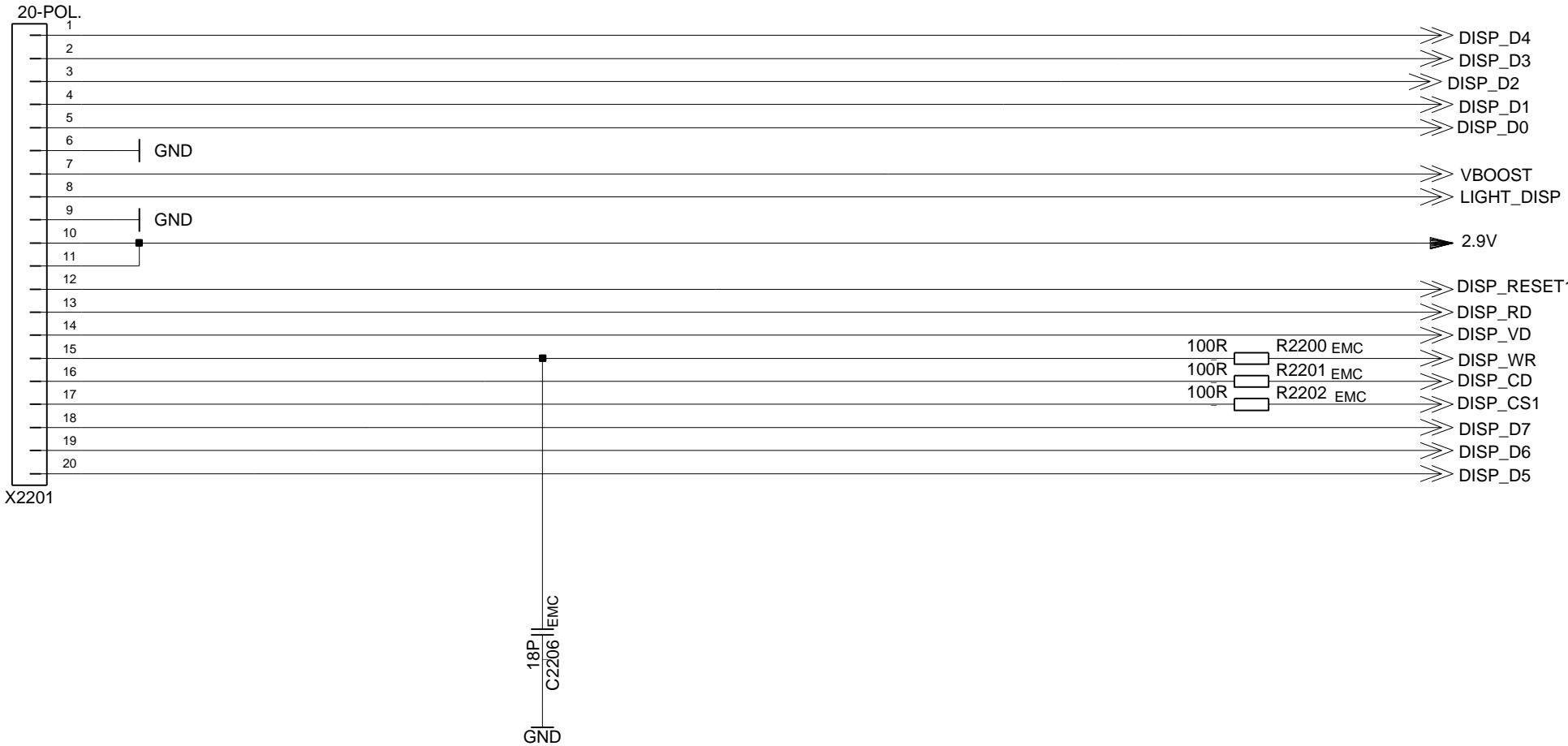
				DATE	22.12.2004	Polaris B2+ Board Variante 1 TOP HIERARCHY LEVEL SCHEMATIC	1:1
				USER	Nolte		
				APPR'D			
				MD PD HW 4 Ulm			
2	34574	15.12.2005	Nol	BENQ mobile		239996	sheet21
1	34111	02.12.2005	Nol				
VERS.	CHANGE NUMBER	DATE	NAME	(Created by BOM number: A5B00900205298-34574)			

Proprietary data, Company confidential.
all rights reserved

Als Betriebsgeheimnis anvertraut
alle Rechte vorbehalten

DISPLAY_CONNECTOR

2200-2299



				DATE	22.12.2004	Polaris B2+ Board Variante 1 TOP HIERARCHY LEVEL SCHEMATIC	1:1
				USER	Nolte		
				APPR'D			
				MD PD HW 4 Ulm			
	2	34574	15.12.2005	Nol	BENQ mobile	239996	sheet22
	1	34111	02.12.2005	Nol			
VERS.	CHANGE NUMBER		DATE	NAME	(Created by BOM number: A5B00900205298-34574)		

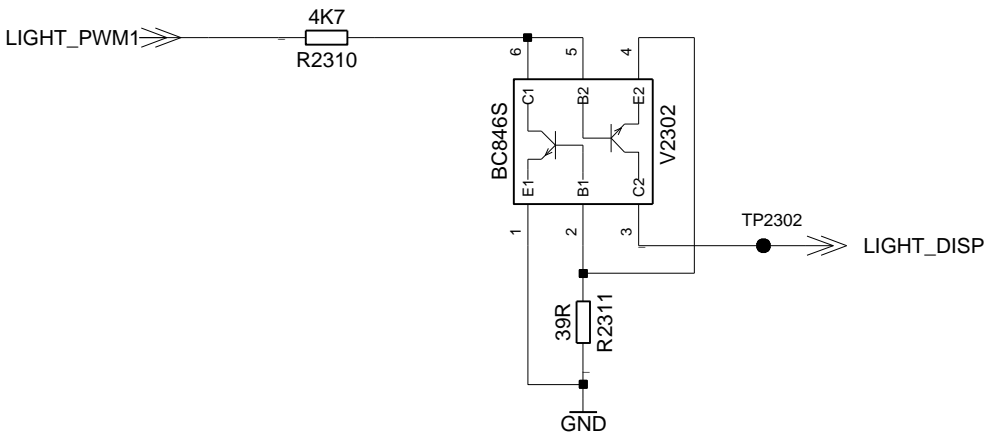
Proprietary data, company confidential.
All rights reserved

Als Betriebsgeheimnis anvertraut
Alle Rechte vorbehalten

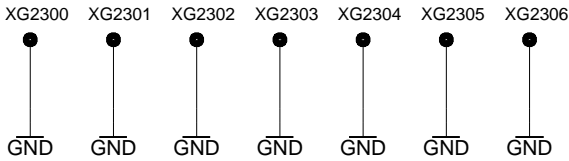
DISPLAY/ KEYPAD BACKLIGHT CONTROL

2300-2399

MAIN_DISPLAY



GND Pads for upper case



				DATE	22.12.2004	Polaris B2+ Board Variante 1 TOP HIERARCHY LEVEL SCHEMATIC	1:1
				USER	Nolte		
				APPR'D			
				MD PD HW 4 Ulm			
2	34574	15.12.2005	Nol	BENQ mobile		239996	sheet23
1	34111	02.12.2005	Nol				
VERS.	CHANGE NUMBER	DATE	NAME	(Created by BOM number: A5B00900205298-34574)			

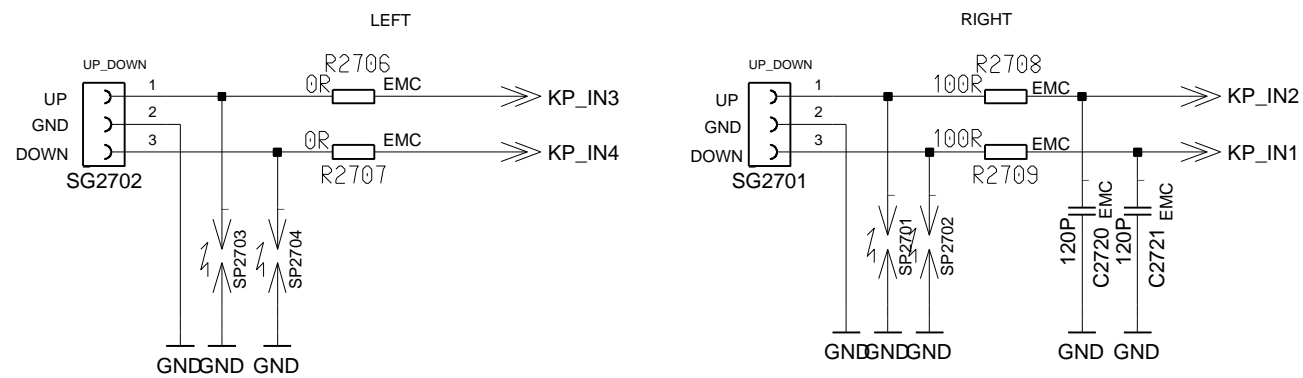
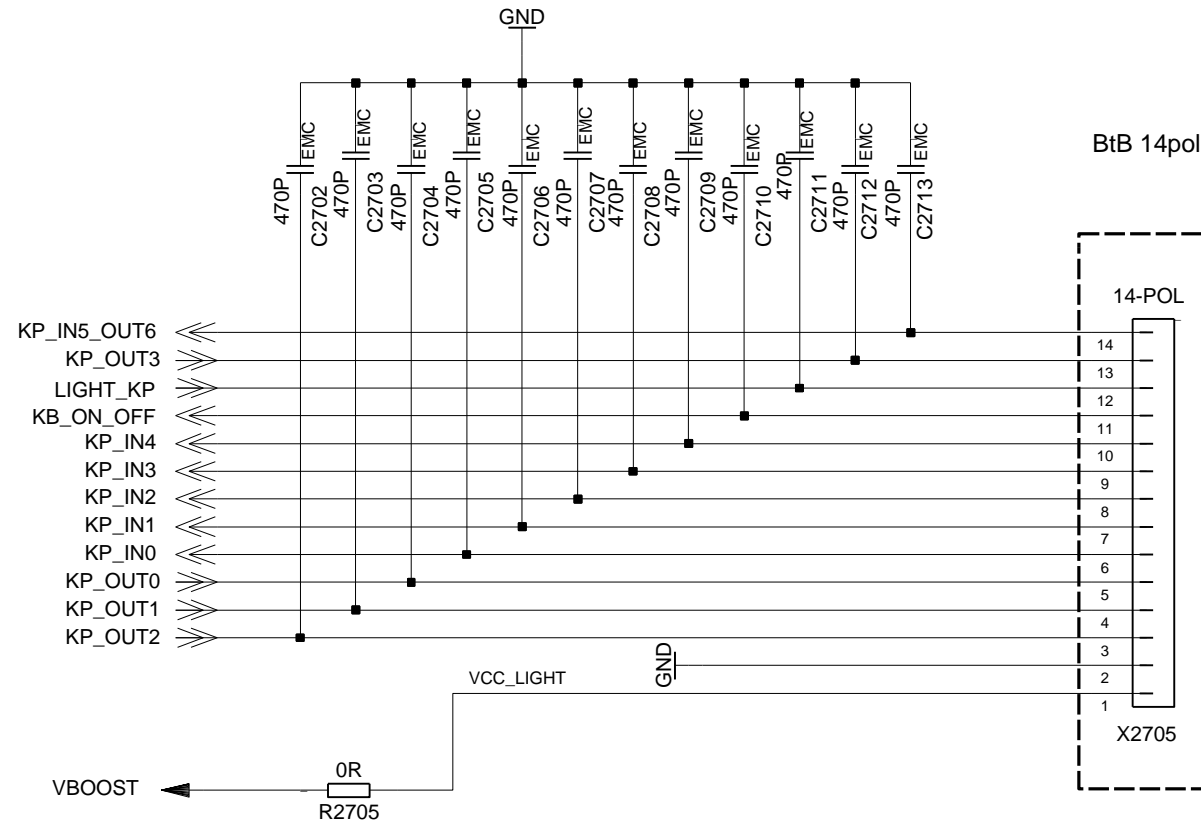
Proprietary data, company confidential.
All rights reserved

Als Betriebsgeheimnis anvertraut
Alle Rechte vorbehalten

MMI_CONNECTOR

BOARD TO BOARD CONNECTOR

2700-2749



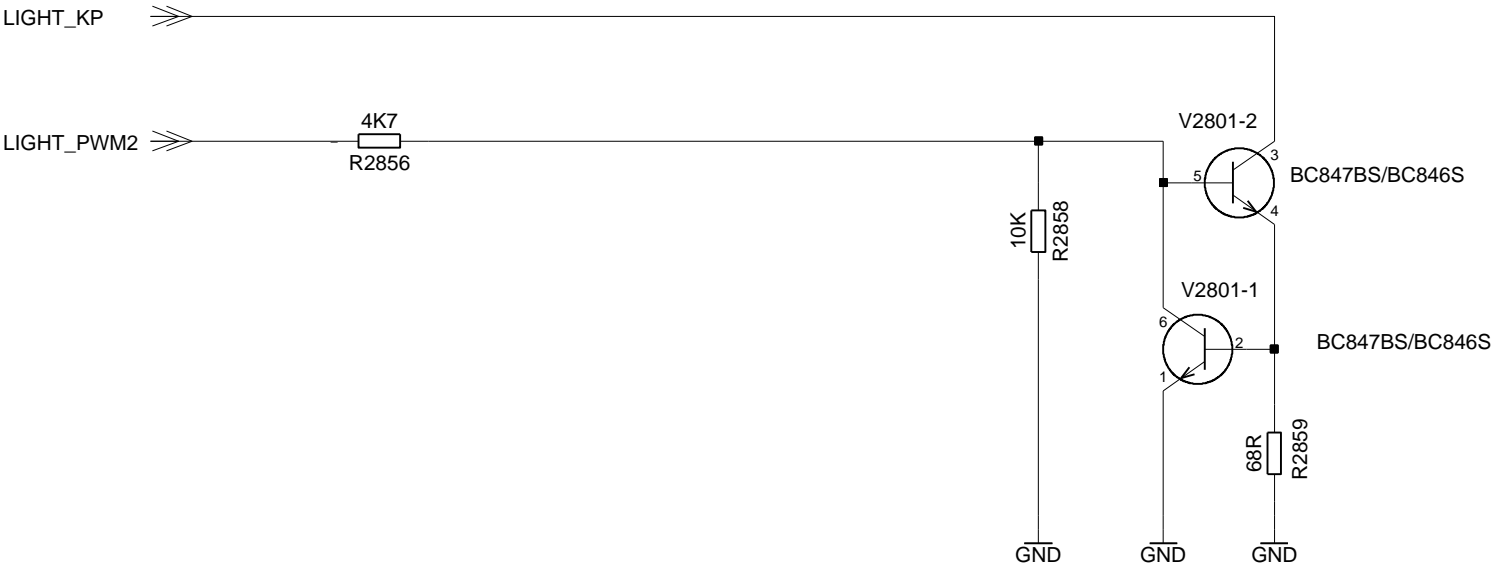
				DATE	22.12.2004	Polaris B2+ Board Variante 1 TOP HIERARCHY LEVEL SCHEMATIC	1:1
				USER	Nolte		
				APPR'D			
				MD PD HW 4 Ulm			
				BENQ mobile		239996	sheet27
2	34574	15.12.2005	Nol				
1	34111	02.12.2005	Nol	(Created by BOM number: A5B00900205298-34574)			
VERS.	CHANGE NUMBER	DATE	NAME				

Proprietary data, company confidential.
All rights reserved

Als Betriebsgeheimnis anvertraut
Alle Rechte vorbehalten

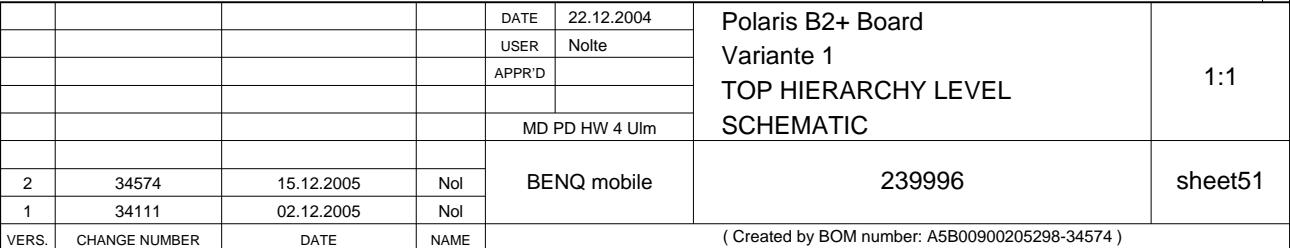
KEYPAD_BACKLIGHT

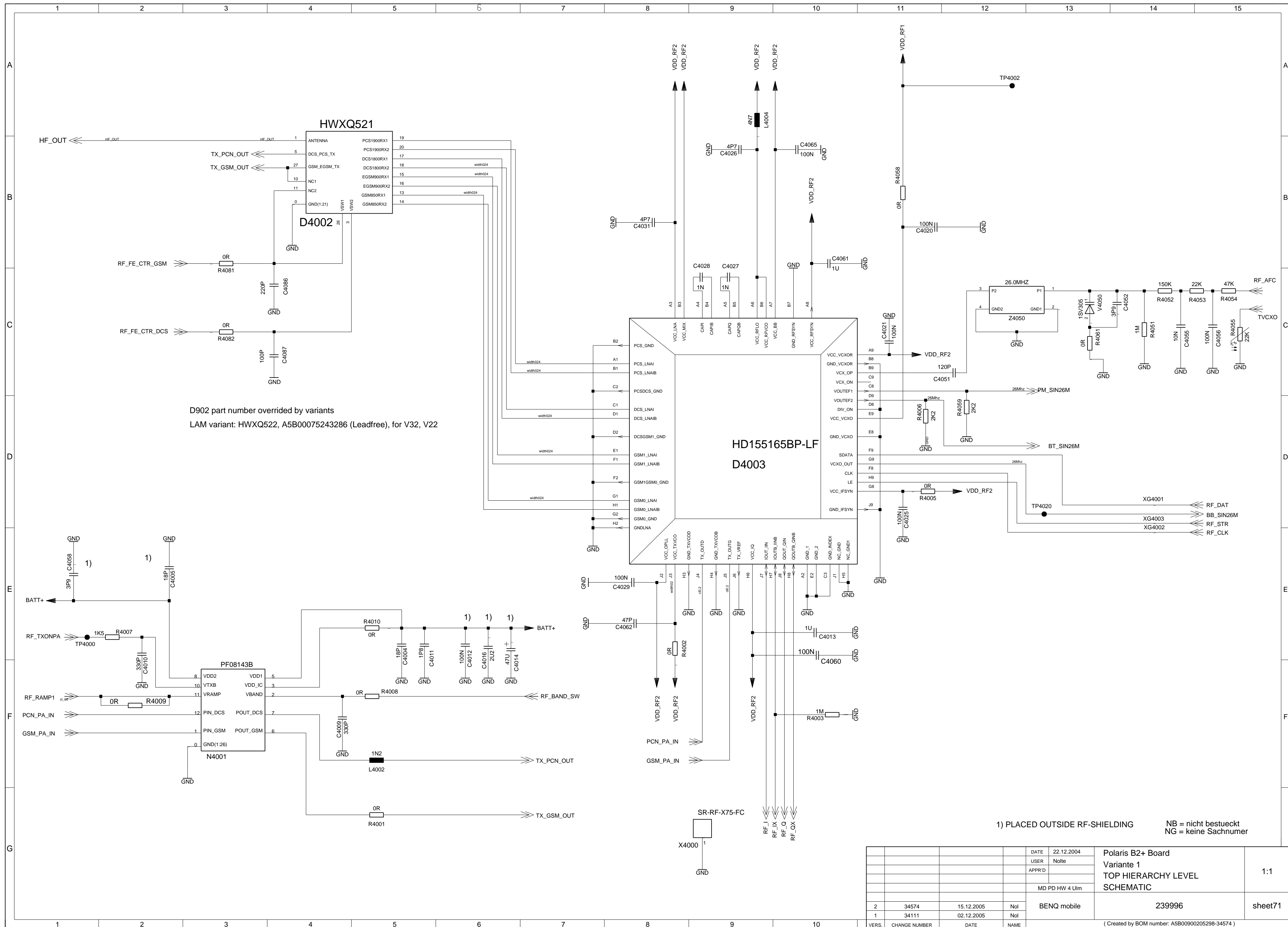
2800-2899



				DATE	22.12.2004	Polaris B2+ Board Variante 1 TOP HIERARCHY LEVEL SCHEMATIC	1:1
				USER	Nolte		
				APPR'D			
				MD PD HW 4 Ulm			
2	34574	15.12.2005	Nol	BENQ mobile		239996	sheet28
1	34111	02.12.2005	Nol				
VERS.	CHANGE NUMBER	DATE	NAME	(Created by BOM number: A5B00900205298-34574)			

Als Betriebsgeheimnis anvertraut
Alle Rechte vorbehalten





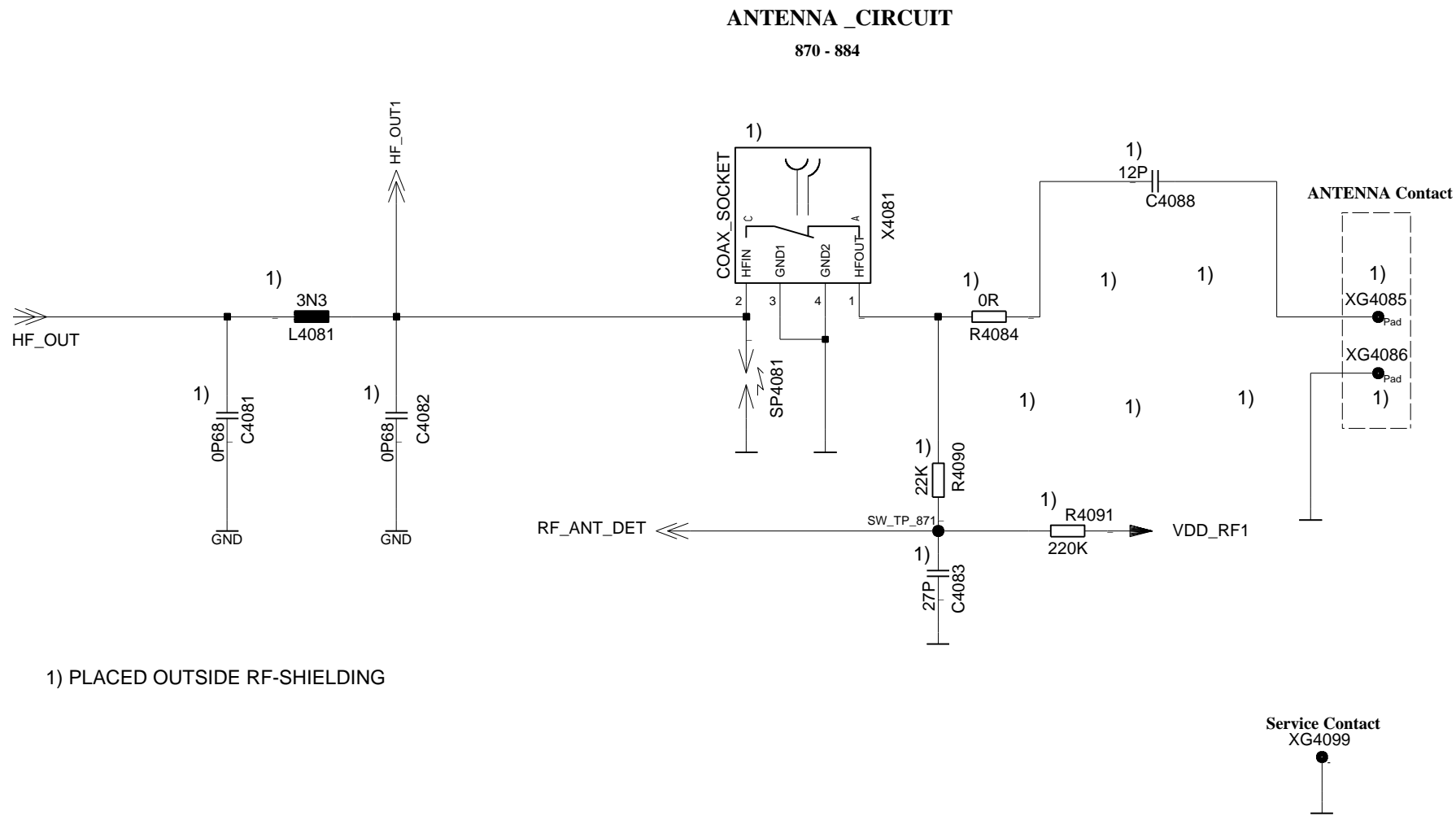
D902 part number overridden by variants
LAM variant: HWXQ522, A5B00075243286 (Leadfree), for V32, V22

1) PLACED OUTSIDE RF-SHIELDING
NB = nicht bestueckt
NG = keine Sachnummer

				DATE	22.12.2004	Polaris B2+ Board Variante 1 TOP HIERARCHY LEVEL SCHEMATIC	1:1
				USER	Nolte		
				APPR'D			
				MD PD HW 4 Ulm			
2	34574	15.12.2005	Nol	BENQ mobile	239996		sheet71
1	34111	02.12.2005	Nol				
(Created by BOM number: A5B00900205298-34574)							
VERS.	CHANGE NUMBER	DATE	NAME				

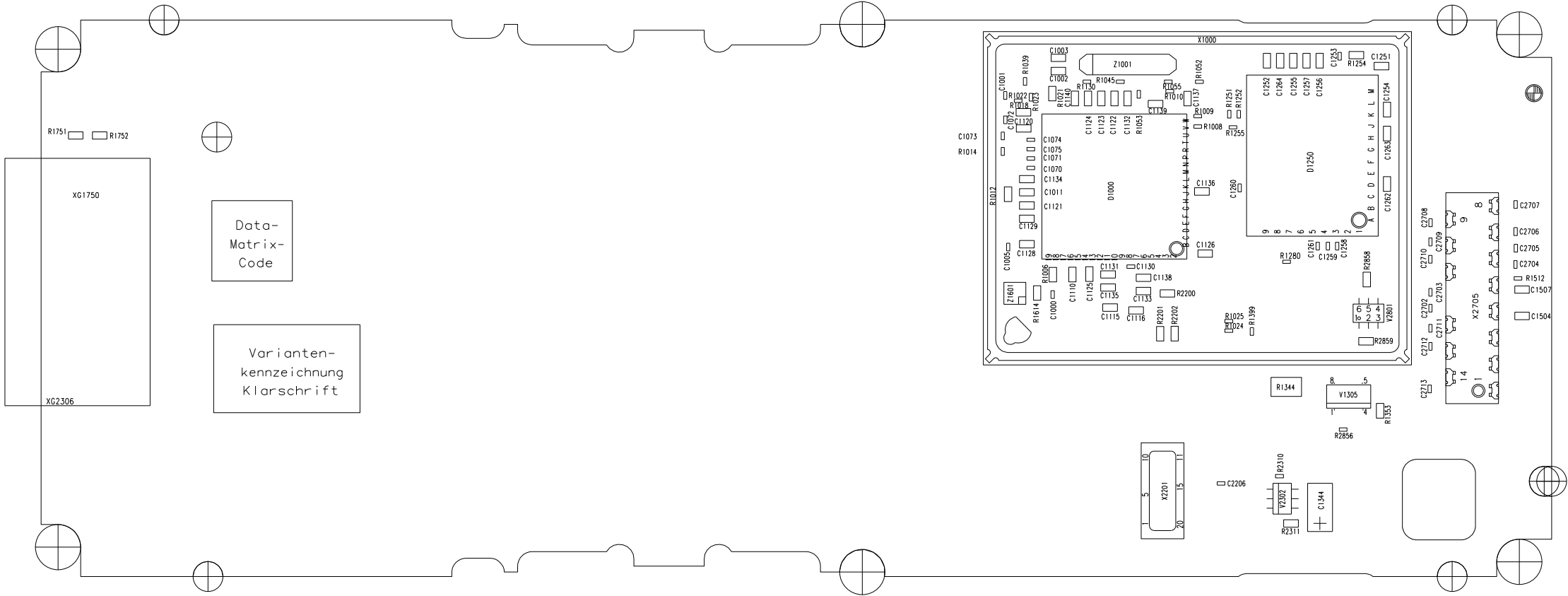
Proprietary data, company confidential.
All rights reserved

Als Betriebsgeheimnis anvertraut
Alle Rechte vorbehalten



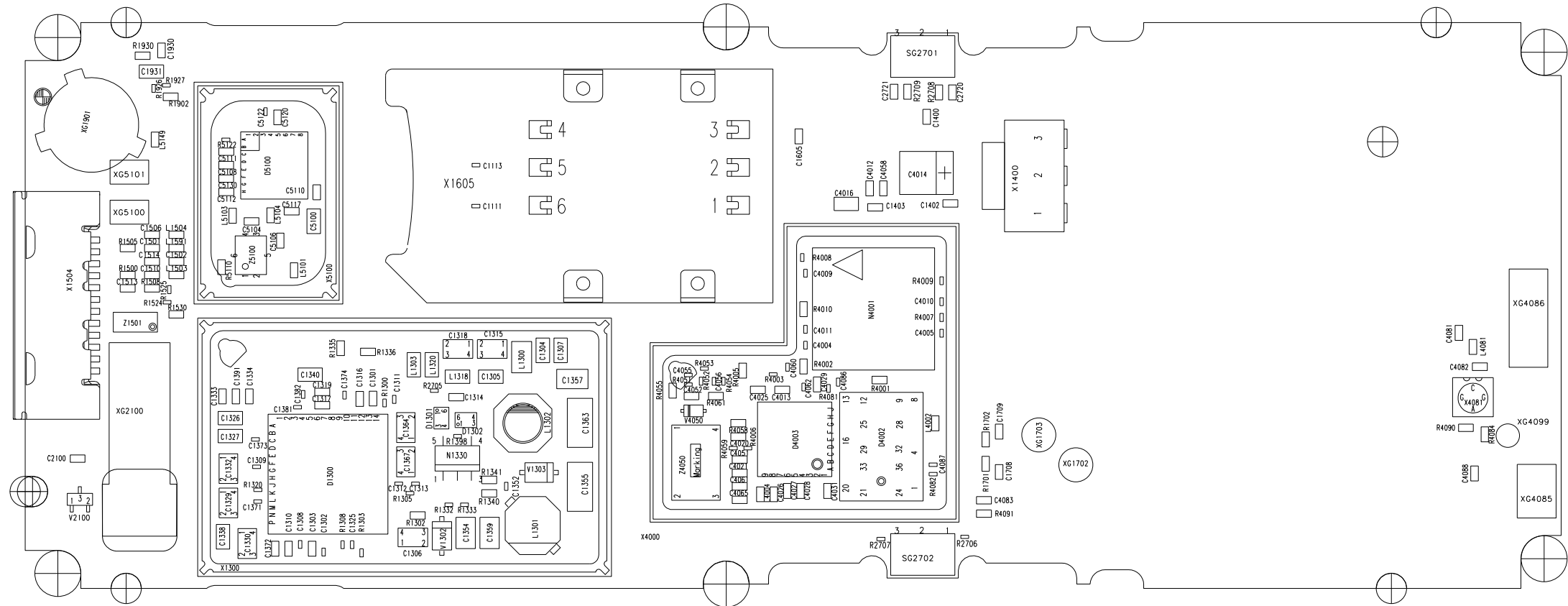
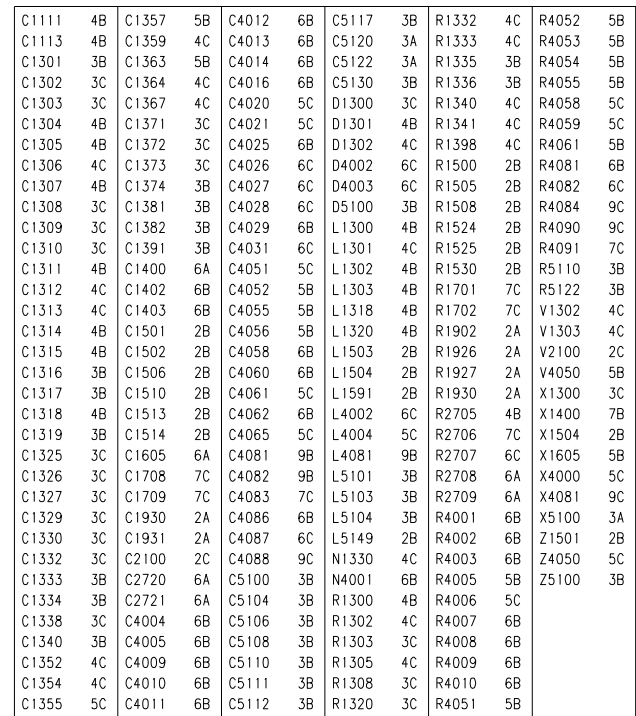
				DATE	22.12.2004	Polaris B2+ Board Variante 1 TOP HIERARCHY LEVEL SCHEMATIC	1:1
				USER	Nolte		
				APPR'D			
				MD PD HW 4 Ulm		239996	sheet72
2	34574	15.12.2005	Nol	BENQ mobile			
1	34111	02.12.2005	Nol				
VERS.	CHANGE NUMBER	DATE	NAME	(Created by BOM number: A5B00900205298-34574)			

C1000	7B	C1139	7A	D1250	8B	R2202	7B
C1001	7A	C1140	7A	R1006	7B	R2310	8C
C1002	7A	C1251	9A	R1008	8A	R2311	8C
C1003	7A	C1252	8A	R1009	8A	R2856	8C
C1005	7B	C1253	8A	R1010	7A	R2858	8B
C1011	7B	C1254	9A	R1012	7B	R2859	8B
C1070	7B	C1255	8A	R1014	7B	V1305	8B
C1071	7B	C1256	8A	R1018	7A	V2302	8C
C1072	7A	C1257	8A	R1021	7A	V2801	8B
C1073	7B	C1258	8B	R1022	7A	X1000	6B
C1074	7B	C1259	8B	R1023	7A	X2201	7C
C1075	7B	C1260	8B	R1024	8B	X2705	9B
C1110	7B	C1261	8B	R1025	8B	Z1001	7A
C1115	7B	C1262	9B	R1039	7A	Z1601	7B
C1116	7B	C1263	9A	R1045	7A		
C1120	7A	C1264	8A	R1052	8A		
C1121	7B	C1344	8C	R1053	7A		
C1122	7A	C1504	9B	R1055	7A		
C1123	7A	C1507	9B	R1130	7A		
C1124	7A	C2206	8C	R1251	8A		
C1125	7B	C2702	9B	R1252	8A		
C1126	8B	C2703	9B	R1254	8A		
C1128	7B	C2704	9B	R1255	8A		
C1129	7B	C2705	9B	R1280	8B		
C1130	7B	C2706	9B	R1344	8B		
C1131	7B	C2707	9B	R1353	9C		
C1132	7A	C2708	9B	R1399	8B		
C1133	7B	C2709	9B	R1512	9B		
C1134	7B	C2710	9B	R1614	7B		
C1135	7B	C2711	9B	R1751	2A		
C1136	8B	C2712	9B	R1752	2A		
C1137	8A	C2713	9B	R2200	7B		
C1138	7B	D1000	7B	R2201	7B		



Achtung : HoeHENprofil C24____-____-____-42 (gilt nur fuer Entwicklung)
Liefervarianten siehe : V24851-Z2000-A1-*-35

				DATE	22.12.2004	Polaris B2+ Board Variante 1 WIRING DIAGRAMM (SOLDER SIDE 1)	3:1
				NAME	Noite		
				APPR'D			
				STD			
				MD PD HW 4 Ulm		239997	SHEET 1+
2	34574	15.12.2005	NoI	BENQ mobile			
1	34111	02.12.2005	NoI				
VERS.	CHANGE NUMBER	DATE	NAME	(Created by BOM number: A5B00900205298-34574)			



				DATE	22.12.2004	Polaris B2+ Board Variante 1 WIRING DIAGRAMM (SOLDER SIDE 2)	3:1
				NAME	NoIte		
				APPR'D			
				STD			
				MD PD HW 4 UIm			
2	34574	15.12.2005	NoI	BENQ mobile		239997	SHEET
1	34111	02.12.2005	NoI				2+
VERS.	CHANGE NUMBER	DATE	NAME	(Created by BOM number: A5B00900205298-34574)			

TP1013	6B	/TVCX0
TP1014	6A	/BREF
TP1302	8C	/PM_WADOG2
TP1306	8C	2.9V
TP1309	8B	2.65V
TP1317	7C	VDD_RTC
TP1327	7C	VBUCK
TP1334	8B	/PM_RESET_N
TP1355	7C	VBOOST
TP2302	8C	/LIGHT_DISP
TP4000	5B	/RF_TXONPA
TP4002	6B	VDD_RF1
TP4020	6B	/BB_SIN26M
TP5101	9A	/NS457504

				DATE	22.12.2004	Polaris B2+ Board Variante 1 TESTPOINT DIAGRAMM (SIDE 1)	3:1
				NAME	NoIte		
				APPR'D			
				STD			
				MD PD HW 4 Ulm		239998	SHEET 1+
2	34574	15.12.2005	NoI	BENQ mobile			
1	34111	02.12.2005	NoI				
VERS.	CHANGE NUMBER	DATE	NAME	(Created by BOM number: A5B00900205298-34574)			

PROPRIETARY DATA, COMPANY CONFIDENTIAL
ALL RIGHTS RESERVED

ALS BETRIEBSGEHEIMNIS ANVERTRAUT
ALLE RECHTE VORBEHALTEN

1 2 3 4 5 6 7 8 9 10

A

A

B

B

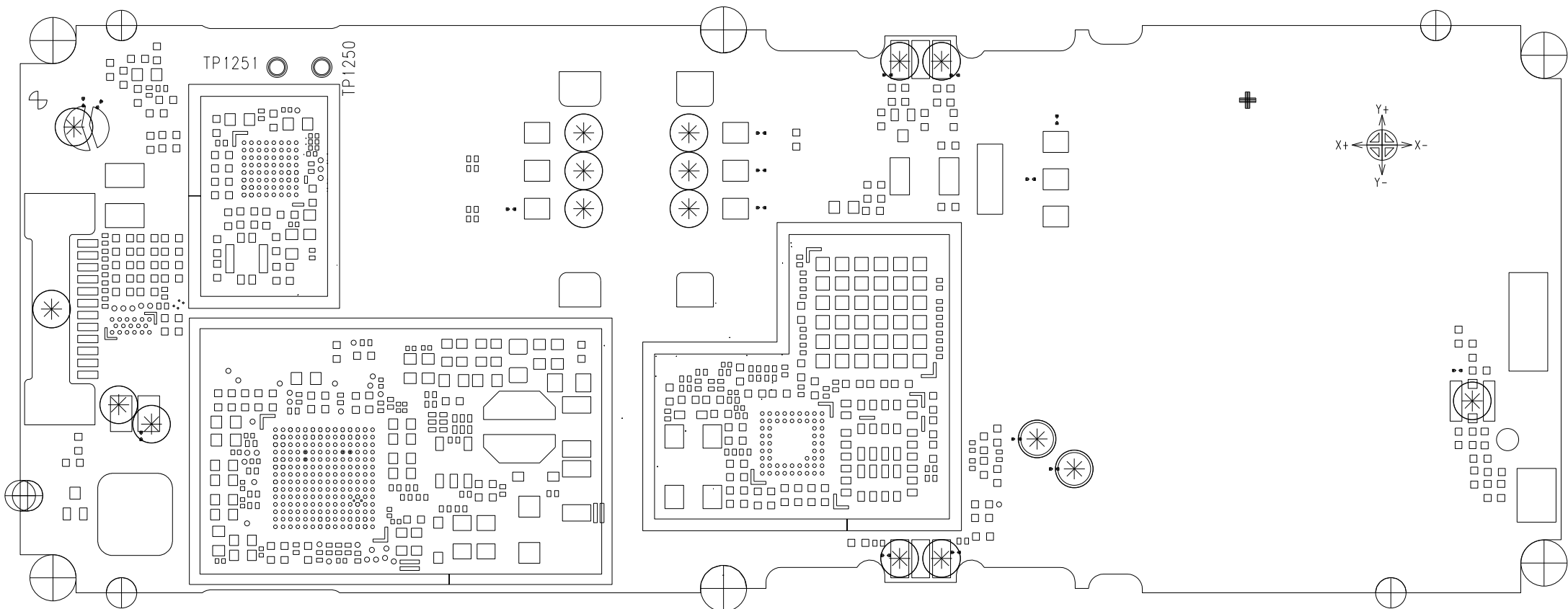
C

C

D

D

E



TP1250 3A /F_VPP
TP1251 3A 1.8V_MEM2

1 2 3 4 5

				DATE	22.12.2004	Polaris B2+ Board Variante 1 TESTPOINT DIAGRAMM (SIDE 2)	3:1
				NAME	NoIte		
				APPR'D			
				STD			
				MD PD HW 4 Ulm		239998	SHEET 2-
2	34574	15.12.2005	NoI	BENQ mobile			
1	34111	02.12.2005	NoI				
VERS.	CHANGE NUMBER	DATE	NAME	(Created by BOM number: A5B00900205298-34574)			

Proprietary data, company confidential.
All rights reserved

Als Betriebsgeheimnis anvertraut
Alle Rechte vorbehalten

1		2		3		4		5	
HIERARCHY				SHEET		PDF-SHEET			
A5B00900204996-34042				index		sheet 1			
				netlist1		sheet 2			
				poslist1		sheet 3			
				page1		----			
				sheet1		sheet 4			

Proprietary data, company confidential.
All rights reserved

1		2		3		4		5	
<div>KB_ON_OFF /sheet1 9 B /sheet1 3 E</div> <div>KP_IN0 /sheet1 9 C /sheet1 1 B</div> <div>KP_IN1 /sheet1 9 C /sheet1 1 B</div> <div>KP_IN2 /sheet1 9 C /sheet1 1 C</div> <div>KP_IN3 /sheet1 9 C /sheet1 1 C</div> <div>KP_IN4 /sheet1 9 B /sheet1 1 D</div> <div>KP_IN5_OUT6 /sheet1 9 B /sheet1 4 D</div> <div>KP_OUT0 /sheet1 9 C /sheet1 1 D</div> <div>KP_OUT1 /sheet1 9 C /sheet1 2 D</div> <div>KP_OUT2 /sheet1 9 C /sheet1 3 D</div> <div>KP_OUT3 /sheet1 9 B /sheet1 4 D</div> <div>LIGHT_KP /sheet1 9 B /sheet1 8 D</div> <div>VCC_LIGHT /sheet1 9 C /sheet1 8 A</div>									
				DATE	03.02.2005	MMI Polaris B2 plus variant 1 TOP HIERARCHY LEVEL SCHEMATIC			1:1
				USER	Nolte				
				APPR'D					
				MP PD HW4 Ulm					
				BENQ mobile		239404			netlist1
1	34043	29.11.2005	Hi						
VERS.	CHANGE NUMBER	DATE	NAME	(Created by BOM number: A5B00900204998-34043)					

Proprietary data, company confidential.
All rights reserved

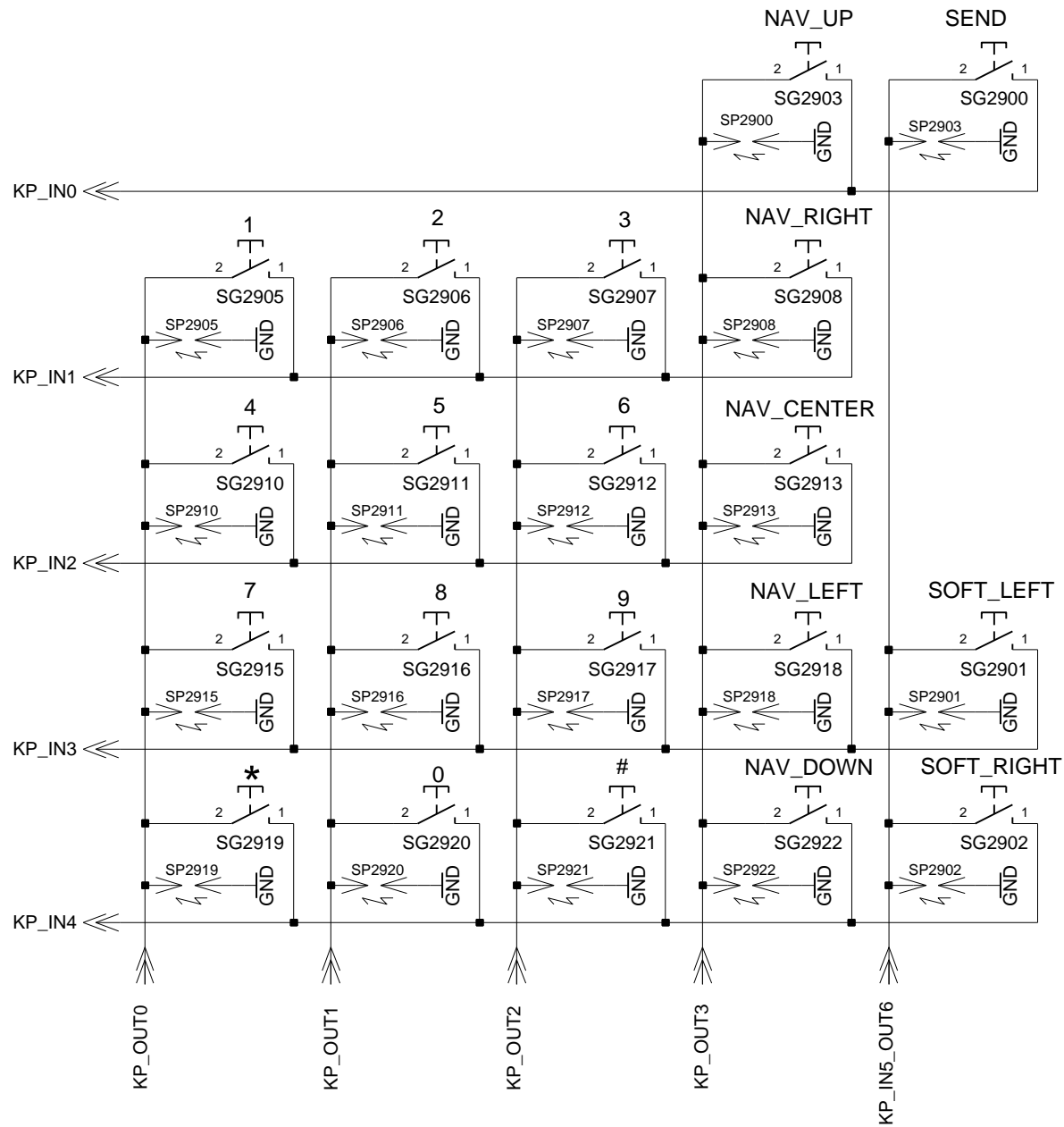
Als Betriebsgeheimnis anvertraut
Alle Rechte vorbehalten

1		2		3		4		5	
<div>R11 /sheet1 7 D</div> <div>R12 /sheet1 8 D</div> <div>TP17 /sheet1 8 C</div> <div>TP16 /sheet1 7 B</div> <div>TP12 /sheet1 8 B</div> <div>TP14 /sheet1 8 D</div> <div>TP11 /sheet1 7 B</div> <div>TP15 /sheet1 8 B</div> <div>TP13 /sheet1 7 C</div> <div>TP18 /sheet1 7 D</div> <div>V11 /sheet1 7 A</div> <div>V12 /sheet1 8 B</div> <div>V13 /sheet1 7 C</div> <div>V14 /sheet1 8 C</div> <div>V15 /sheet1 8 A</div> <div>V16 /sheet1 7 B</div> <div>V17 /sheet1 8 C</div> <div>V18 /sheet1 7 C</div>									
				DATE	03.02.2005	MMI Polaris B2 plus variant 1 TOP HIERARCHY LEVEL SCHEMATIC			1:1
				USER	Nolte				
				APPR'D					
				MP PD HW4 Ulm					
				BENQ mobile		239404			poslist1
1	34043	29.11.2005	Hi						
VERS.	CHANGE NUMBER	DATE	NAME	(Created by BOM number: A5B00900204998-34043)					

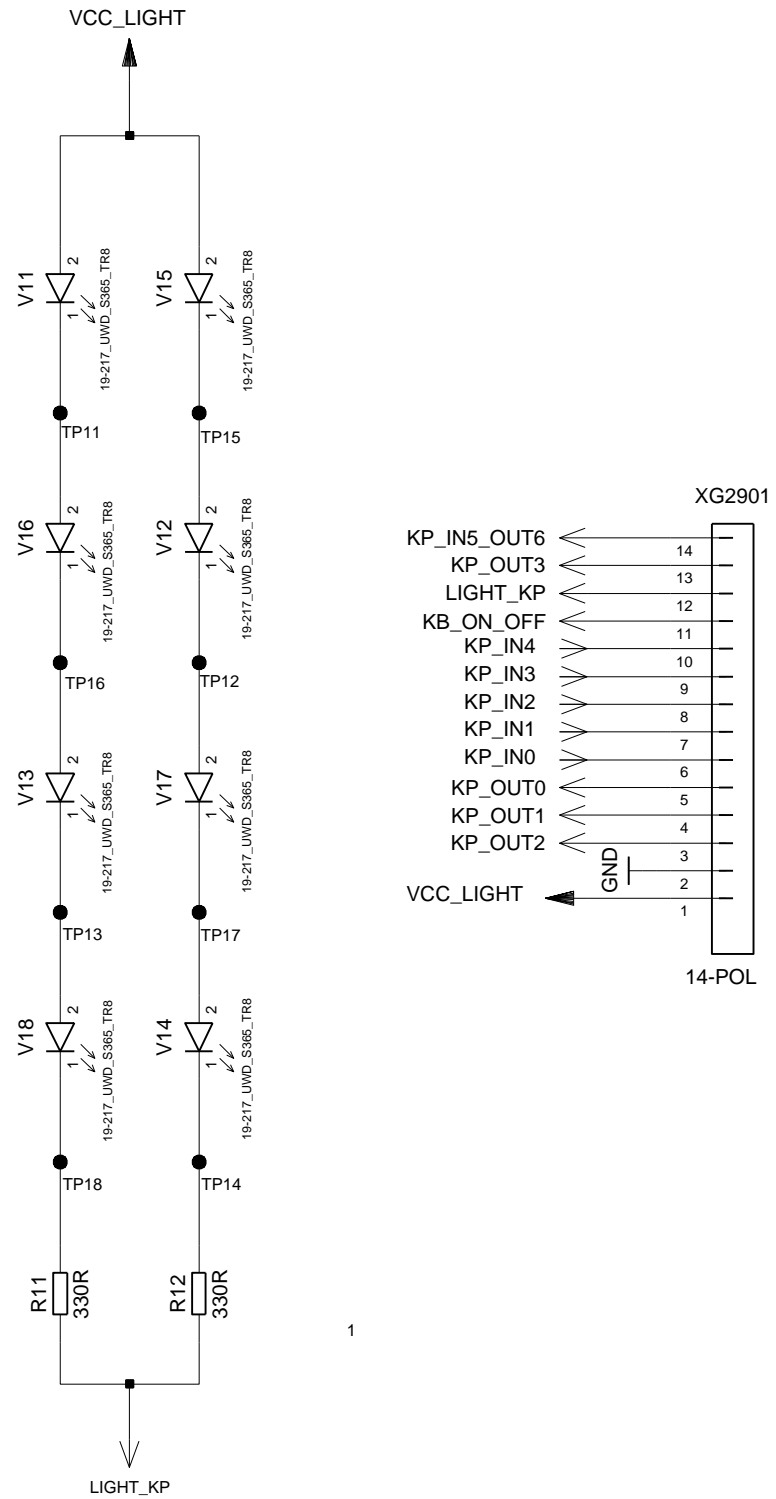
Proprietary data, company confidential.
All rights reserved

Als Betriebsgeheimnis anvertraut
Alle Rechte vorbehalten

KEYPAD_SGOLD2



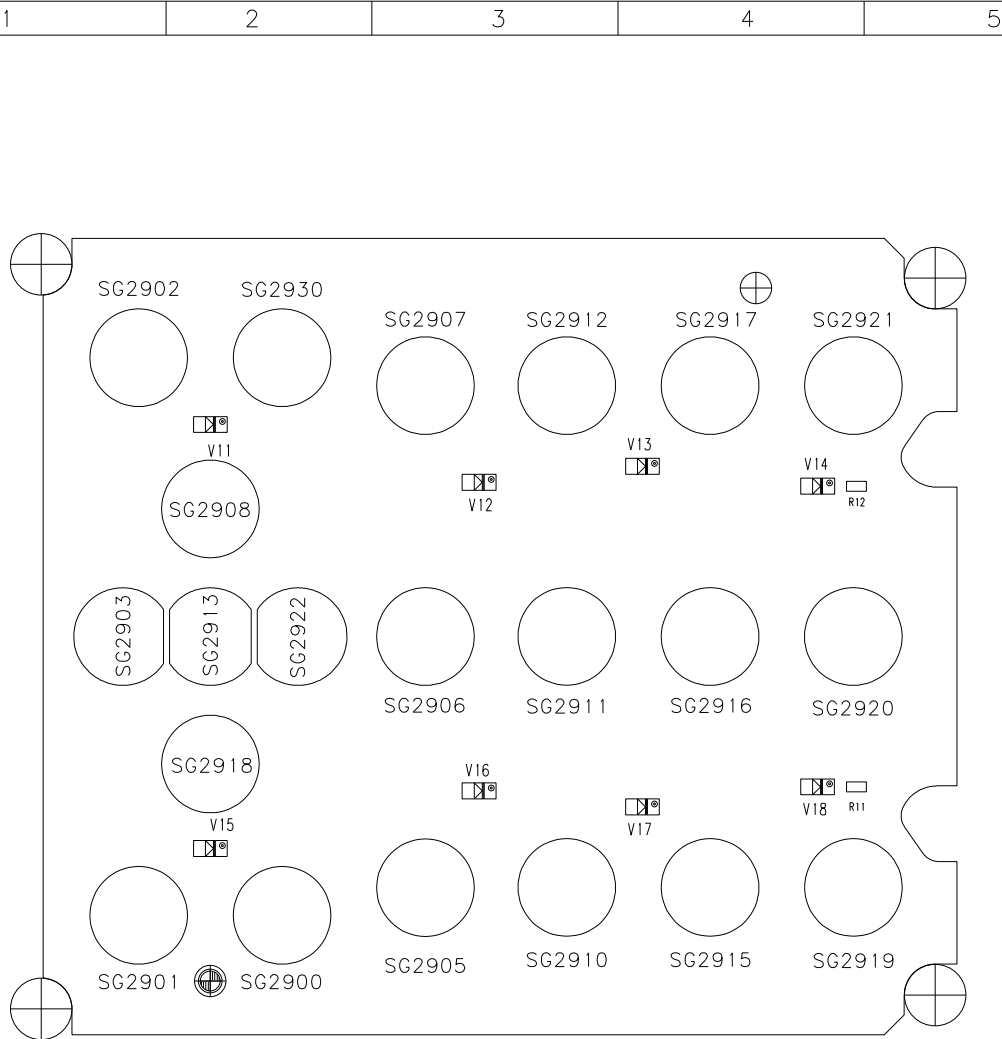
	POLARIS	
0	X	
1	X	
2	X	
3	X	
4	X	
5	X	
6	X	
7	X	
8	X	
9	X	
*	X	
#	X	
SEND	X	
END	X	
SOFT LEFT	X	
SOFT RIGHT	X	
OPERATOR		
TASK		
CUSTOMER		
NAVI UP	X	
NAVI LEFT	X	
NAVI RIGHT	X	
NAVI CENTER	X	
NAVI DOWN	X	
SIDE1/ SIDE2	X	
SIDE3/ SIDE4	X	



				DATE	03.02.2005	MMI Polaris B2 plus variant 1 TOP HIERARCHY LEVEL SCHEMATIC	1:1
				USER	Nolte		
				APPR'D			
				MP PD HW4 Ulm			
				BENQ mobile		239404	sheet1
1	34043	29.11.2005	Hi				
VERS.	CHANGE NUMBER	DATE	NAME	(Created by BOM number: A5B00900204998-34043)			

PROPRIETARY DATA, COMPANY CONFIDENTIAL
ALL RIGHTS RESERVED

ALS BETRIEBSGEHEIMNIS ANVERTRAUT
ALLE RECHTE VORBEHALTEN



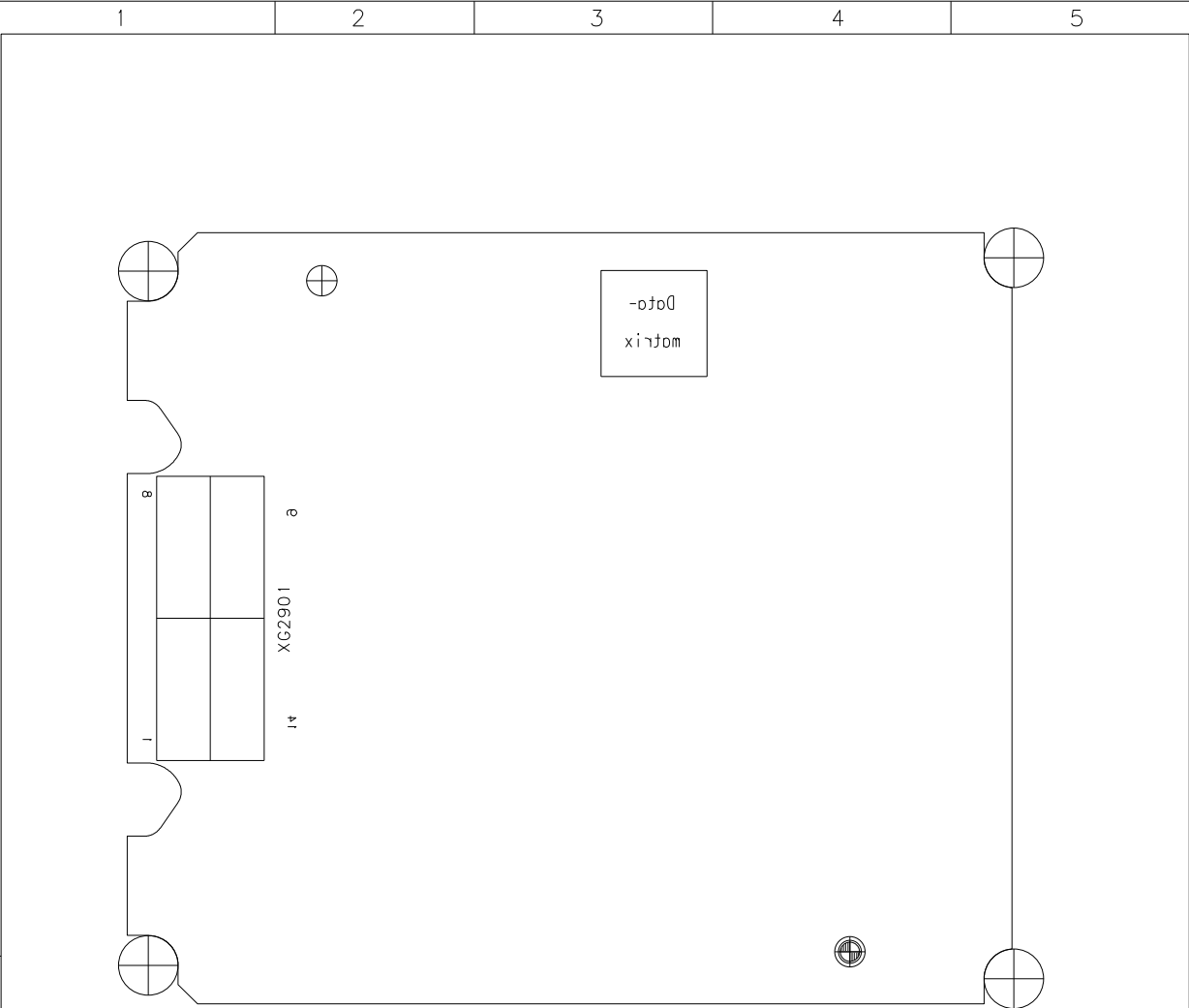
R11	4B
R12	4B
V11	2A
V12	3B
V13	4B
V14	4B
V15	2C
V16	3B
V17	4C
V18	4B

Achtung : Höhenprofil C24____-____-____-42 (gilt nur fuer Entwicklung)
Liefervarianten siehe : V24851-Z2000-A1-*-35

				DATE	03.02.2005	MMI Polaris B2 plus variant 1 WIRING DIAGRAMM (SOLDER SIDE 1)	3 : 1
				NAME	Nolte		
				APPR'D			
				STD			
				MP PD HW4 Ulm		239405	SHEET 1+
				BENQ mobile			
1	34043	29.11.2005	Hi				
VERS.	CHANGE NUMBER	DATE	NAME	(Created by BOM number: A5B00900204998-34043)			

PROPRIETARY DATA, COMPANY CONFIDENTIAL
ALL RIGHTS RESERVED

ALS BETRIEBSGEHEIMNIS ANVERTRAUT
ALLE RECHTE VORBEHALTEN



Achtung : Höhenprofil C24___-___-___-42 (gilt nur fuer Entwicklung)
Liefervarianten siehe : V24851-Z2000-A1-*-35

				DATE	03.02.2005	MMI Polaris B2 plus variant 1 WIRING DIAGRAMM (SOLDER SIDE 2)	3:1
				NAME	Nolte		
				APPR'D			
				STD			
				MP PD HW4 Ulm		239405	SHEET 2+
				BENQ mobile			
1	34043	29.11.2005	Hi				
VERS.	CHANGE NUMBER	DATE	NAME	(Created by BOM number: A5B00900204998-34043)			