

Proprietary data, company confidential.
All rights reserved

Als Betriebsgeheimnis anvertraut
Alle Rechte vorbehalten

1		2		3		4		5	
HIERARCHY						SHEET		PDF-SHEET	
A5B00900188989-31426						index	sheet 1		
						netlist1	sheet 2		
						netlist2	sheet 3		
						poslist1	sheet 4		
						poslist2	sheet 5		
						page1	----		
						sheet1	sheet 6		
						sheet2	sheet 7		
						sheet3	sheet 8		
						sheet4	sheet 9		
						sheet5	sheet 10		
						sheet6	sheet 11		
						sheet7	sheet 12		
						sheet8	sheet 13		
						sheet9	sheet 14		
						sheet10	sheet 15		
						sheet11	sheet 16		
						sheet12	sheet 17		
						sheet13	sheet 18		
						sheet14	sheet 19		
						sheet15	sheet 20		
						sheet16	sheet 21		
						sheet17	sheet 22		
						sheet18	sheet 23		
sheet19	sheet 24								
sheet20	sheet 25								
sheet21	sheet 26								
sheet22	sheet 27								
sheet23	sheet 28								

		1	2	3	4	5	6	7	8	9	10							
A	B	C	D	E	A2(20) /sheet9 6 B /sheet22 6 C	/sheet9 10 C /sheet16 15 D	/sheet9 10 D /sheet19 15 E /sheet19 4 B	/sheet11 6 F /sheet21 6 D	/sheet4 12 E /sheet7 2 G	/sheet20 10 D	MICFBP /sheet7 10 F	/sheet22 6 C	/sheet1 14 C /sheet12 11 C	SDRAM_CS_N /sheet9 2 A /sheet10 2 B	TX_ON /sheet5 5 F /sheet9 10 A	VBATT /sheet4 8 B /sheet4 7 B /sheet4 8 B /sheet3 3 B /sheet3 5 B /sheet3 4 B /sheet11 4 E /sheet11 1 C /sheet12 10 C /sheet12 7 B /sheet13 6 E	VDD_BT /sheet16 9 C /sheet16 8 C /sheet16 8 E /sheet16 6 C	
					ACC_PWR_EN /sheet9 13 B /sheet11 9 D	BUFF_TCXO /sheet13 10 E /sheet17 6 B	CHG_CNT_N /sheet11 5 B /sheet13 7 B	GPIO_42 /sheet9 13 D	HPH_SD /sheet9 13 B	/sheet9 13 D /sheet20 10 D	MICINN /sheet7 10 F	PA_ON0 /sheet4 13 C /sheet9 9 B	RX /sheet1 14 C /sheet12 11 D /sheet13 2 B	SDRAM_DQM(0) /sheet9 2 B /sheet10 6 B	TX_Q_M /sheet5 11 E /sheet7 10 E			
					AMUX_OUT /sheet7 2 G /sheet13 10 E	BUFF_TCXO_BT /sheet13 11 F /sheet16 12 E	CP_GPS /sheet6 2 B /sheet5 5 E	GPIO_43 /sheet9 13 D	I2C_SCL /sheet9 8 C /sheet7 7 B /sheet18 12 D /sheet19 10 C /sheet19 7 F	/sheet9 13 D /sheet20 10 D	MICINP /sheet7 10 F	PA_ON0_N /sheet4 13 B /sheet4 13 F	RX0_I_M /sheet6 8 D /sheet5 5 D /sheet7 8 E	SDRAM_DQM(1) /sheet9 2 B /sheet10 6 B	TX_Q_P /sheet5 11 E /sheet7 10 E		VIB_DRV /sheet13 3 A /sheet13 7 C	
					ANT /sheet2 1 E	CAM1_DATA(7:0) /sheet19 2 C /sheet19 11 B	CTS /sheet1 14 C /sheet12 11 C	GPIO_64 /sheet9 13 C	I2C_SDA /sheet9 8 C /sheet7 4 B /sheet18 10 D /sheet19 10 C /sheet19 7 F	/sheet9 13 D /sheet20 10 C	MICOUTP /sheet7 10 F	PA_R0 /sheet9 10 B /sheet13 7 D	RX0_I_P /sheet6 8 D /sheet5 5 D /sheet7 8 E	SDRAM_DQM(2) /sheet9 2 B /sheet10 6 B	TX_VCO_0_EN_N /sheet3 13 E /sheet9 8 D	VDD1 /sheet5 7 D	VPH_FLT /sheet13 13 A /sheet13 12 B	
					ANT_POSN /sheet2 4 E /sheet9 10 C	CAM1_DSP_CLK /sheet19 10 C /sheet19 15 D	DCD /sheet1 14 C /sheet12 11 C	GPIO_65 /sheet9 13 C	ICHARGE /sheet11 5 C /sheet13 10 E	/sheet9 13 D /sheet20 10 C	MMC_CD /sheet9 6 A /sheet14 12 C	PA_RAMP /sheet3 13 F /sheet7 10 E	RX0_Q_M /sheet6 8 D /sheet5 5 D /sheet7 8 E	SDRAM_DQM(3) /sheet9 2 B /sheet10 6 B	TX_VCO_1_EN_N /sheet3 13 E /sheet9 8 D	VDD10 /sheet5 12 C	VPH_PWR /sheet6 9 E /sheet9 11 E /sheet11 10 C /sheet11 2 C /sheet13 5 C /sheet13 12 A /sheet13 3 B /sheet19 9 F /sheet21 6 C /sheet22 1 E	
					ANT_SEL0 /sheet2 13 B /sheet9 10 D	CAM1_HS /sheet19 2 D /sheet19 11 E	EAR1ON /sheet7 10 E	GPIO_66 /sheet9 13 C	ICHARGE /sheet11 5 C /sheet13 10 E	/sheet9 13 D /sheet20 10 C	MMC_CLK /sheet9 10 B /sheet14 12 D	PA_RAMP_A /sheet3 12 F	RX0_Q_P /sheet6 8 D /sheet5 5 D /sheet7 8 E	SDRAM_RAS_N /sheet9 2 A /sheet10 2 B	UB2_N /sheet9 6 A /sheet10 11 C	VDD11 /sheet5 9 C		
					ANT_SEL1 /sheet2 13 C /sheet9 10 D	CAM1_PCLK /sheet19 10 C /sheet19 11 E	EAR1OP /sheet7 10 E	GPS_ANTENNA /sheet6 1 C	ICHARGEOUT /sheet11 5 C /sheet13 10 E	/sheet9 13 D /sheet20 10 C	MMC_CMD /sheet9 10 C /sheet14 12 D	PHONE_ON /sheet13 6 D /sheet20 10 C	RX0_Q_P /sheet6 8 D /sheet5 5 D /sheet7 8 E	SDRAM_WE_N /sheet9 2 A /sheet10 2 B	UIM_P_CLK /sheet13 7 B /sheet15 11 C	VDD13 /sheet5 13 C		
					ANT_SEL2 /sheet2 13 C /sheet9 10 D	CAM1_PWR_EN /sheet9 10 E /sheet19 9 G	EBI1_ADDR(14:1) /sheet9 2 C /sheet10 7 C	GPS_LDO_EN /sheet6 10 E /sheet13 7 C	IRDA_EN /sheet13 7 E /sheet21 6 D /sheet21 6 C	/sheet9 13 D /sheet20 10 D	MMC_DATA /sheet9 10 B /sheet14 12 C	PM_INT_N /sheet9 13 E /sheet13 7 B	RX1_I_M /sheet6 8 C /sheet7 8 E	SLEEP_CLK /sheet13 6 B /sheet17 6 B /sheet18 3 C	UIM_P_DATA /sheet13 10 B /sheet15 11 C	VDD14 /sheet6 13 B	VREG_AUX1 /sheet13 14 B /sheet14 9 B	
					AUXON_AUXOR /sheet7 9 B	CAM1_SEL_N /sheet9 13 B /sheet19 11 D	EBI1_D(15:0) /sheet9 2 E	GSM1800_1900_TX /sheet2 12 F /sheet3 2 D	IRDA_RXD /sheet9 13 B /sheet21 9 C /sheet21 8 E	/sheet9 13 D /sheet20 10 C	MSM_BOOT_MODE1 /sheet8 4 E /sheet17 11 D	PM_SBCK /sheet9 13 B /sheet13 6 D	RX1_I_P /sheet6 8 D /sheet7 8 E	SPKR_OUT_M /sheet12 B /sheet13 4 D	UIM_P_RESET /sheet13 7 B /sheet15 11 C	VDD16 /sheet6 12 B	VREG_AUX2 /sheet13 15 B /sheet13 6 F /sheet16 15 C	
					AUXOP_AUXOL /sheet7 9 B	CAM1_VS /sheet19 2 D /sheet19 11 E	EBI1_D(23:16) /sheet9 2 D	GSM1800_RXN /sheet2 12 E /sheet5 3 C	IRDA_TXD /sheet9 13 B /sheet21 9 C /sheet21 8 E	/sheet9 13 D /sheet20 10 C	MSM_MODE1A /sheet8 4 E /sheet17 11 D	PM_SBDT /sheet9 13 B /sheet13 6 D	RX1_Q_M /sheet6 8 C /sheet7 8 E	SPK_OUT_P /sheet7 12 B /sheet13 4 D	UMTS2100_TX /sheet4 13 C /sheet5 2 D	VDD17 /sheet6 11 B		
					AUXO_M /sheet7 4 C /sheet13 6 D	CAM2_DATA(7:0) /sheet19 7 E /sheet19 11 B	EBI1_D(31:0) /sheet10 2 D	GSM1800_RXP /sheet2 12 E /sheet5 3 C	IRDA_TXD /sheet9 13 B /sheet21 8 E /sheet21 6 C	LB2_N /sheet9 6 A /sheet10 11 C	MSM_MODE2A /sheet8 4 E /sheet17 11 D	PM_SBST /sheet9 13 B /sheet13 6 D	RX1_Q_P /sheet6 8 C /sheet7 8 E	TCXO /sheet10 10 G /sheet13 6 E	USB_CONN_D_M /sheet12 4 D /sheet13 10 C	VDD2 /sheet5 8 D	VREG_CAM1 /sheet19 13 F /sheet19 10 C	
B	C	D	E	F	AUXO_P /sheet7 4 C /sheet13 6 D	CAM2_DSP_CLK /sheet19 6 F /sheet19 15 E	EBI2_D(15:0) /sheet9 6 D /sheet22 5 D	GSM1900_RXN /sheet2 12 D /sheet5 3 C	JTAG_PS_HOLD /sheet13 5 D /sheet17 8 F /sheet17 11 F	LCD_BACKLIGHT /sheet22 6 G /sheet22 6 B	MSM_UART1_CTS_N /sheet9 13 A /sheet12 5 C	PON_RST_N /sheet13 7 C /sheet17 3 C	SBCK_0 /sheet6 8 D /sheet5 5 F /sheet9 10 B	TCXO_EN /sheet9 13 A /sheet13 6 E	USB_CONN_D_P /sheet12 4 D /sheet13 10 C	VDD21 /sheet6 13 B	VREG_CAM2 /sheet19 13 F /sheet19 7 F	
					A_FM_STANDBY /sheet9 10 C /sheet18 9 D	CAM2_HS /sheet19 7 F /sheet19 11 E	EXT_AUDIO_L /sheet1 14 D /sheet7 2 A	GSM1900_RXP /sheet2 12 D /sheet5 3 C	JTAG_RESOUT_N /page1 4 B /sheet17 11 D	LCD_BCKLT_PWM /sheet9 10 D /sheet20 13 E /sheet22 8 F	MSM_UART1_DCD_N /sheet9 13 E /sheet12 4 C /sheet19 4 B	POWER /sheet1 14 C /sheet11 14 C /sheet11 3 B /sheet13 3 C	SBDT_0 /sheet6 8 D /sheet5 5 F /sheet9 10 B	TRK_LO_ADJ /sheet9 8 A /sheet10 5 G	USB_DAT_VP /sheet9 10 B /sheet13 10 C	VDD23 /sheet6 14 B	VREG_GPS_ANT /sheet6 14 E /sheet12 5 E	
					BACKLIGHT_EN /sheet9 6 A /sheet9 11 F	CAM2_PCLK /sheet19 6 E /sheet19 11 E	EXT_AUDIO_R /sheet1 14 D /sheet7 2 B	GSM900_RXN /sheet2 12 E /sheet5 3 C	JTAG_RTCK /page1 4 B /sheet17 11 E	LCD_EN /sheet9 10 C /sheet22 1 E	MSM_UART1_RFR_N /sheet9 13 A /sheet12 4 C	PS_HOLD /sheet9 10 D /sheet13 5 D	SBST_0 /sheet6 8 D /sheet5 5 F /sheet9 10 B	TX /sheet1 14 C /sheet12 11 D /sheet13 2 A	USB_OE_TP_N /sheet9 10 B /sheet13 6 B	VDD24 /sheet6 10 B /sheet6 10 B /sheet6 9 B	VREG_MSMA /sheet8 9 A /sheet7 4 F /sheet7 9 G /sheet7 8 G /sheet7 2 F /sheet7 6 A /sheet13 13 B /sheet18 6 B	
					BATT_FET_N /sheet11 5 D /sheet13 7 E	CAM2_PWR_EN /sheet9 10 E /sheet19 9 G	EXT_AUDIO_REF /sheet1 14 D /sheet7 2 B	GSM900_RXP /sheet2 12 F /sheet5 3 C	JTAG_TCK /page1 4 C /sheet17 11 E	LCD_RST_N /sheet13 7 E /sheet22 3 B	MSM_UART1_RXD /sheet9 13 A /sheet12 5 C	RESOUT1_N /sheet10 11 D /sheet17 11 C /sheet22 3 B	SDRAM_A(0) /sheet9 2 B /sheet10 6 B	TX_AGC_ADJ /sheet5 5 F /sheet9 8 A	USB_RS232_SEL1 /sheet9 13 B /sheet12 11 C	USB_SE0_VM /sheet9 10 B /sheet13 10 C	VDD3 /sheet5 8 D	
					BT_CLK /sheet9 10 C /sheet16 15 C	CAM2_SEL_N /sheet9 13 B /sheet19 11 D /sheet19 11 B	EXT_MIC /sheet1 14 D /sheet7 2 E	GSM900_TX /sheet2 12 F /sheet3 2 D	JTAG_TDI /page1 4 C /sheet17 11 E	LCD_VSYNC /sheet9 2 A /sheet22 6 D	NAND_FLASH_CS_N /sheet9 6 A /sheet10 11 C	RF_THERM /sheet7 4 G	SDRAM_CLK /sheet9 2 A /sheet10 6 C	TX_IREF /sheet5 5 F /sheet8 10 A /sheet7 10 E	USIM_CLK /sheet9 13 B /sheet13 6 B	VDD5 /sheet5 9 D	VREG_MSME /sheet8 9 C /sheet10 9 C /sheet10 1 E /sheet10 11 C /sheet13 13 B /sheet14 6 B /sheet22 4 D	
					BT_DATA /sheet9 10 C /sheet16 15 D	CAM2_VS /sheet19 6 E /sheet19 11 E	EXT_MIC_GND /sheet1 14 D /sheet7 2 F	GSM_PA_BAND /sheet3 13 F /sheet9 10 D	JTAG_TDO /page1 4 B /sheet17 11 D	LOW_VOL /sheet9 10 D	NAND_FLASH_READY /sheet9 6 A /sheet10 9 D	RTR6250_TCXO /sheet5 5 F /sheet10 10 G	SDRAM_CLK_EN /sheet9 2 A /sheet10 6 C	TX_I_P /sheet5 11 E /sheet7 10 E	USIM_RESET /sheet9 13 B /sheet13 6 B	VDD6 /sheet5 10 D /sheet5 9 D		
					BT_ENABLE /sheet9 10 D /sheet16 15 D	CAMIF_DATA(7:0) /sheet9 14 D /sheet19 15 B	FLASH_EN /sheet7 8 F /sheet19 4 B	GSM_PA_EN /sheet6 8 C /sheet3 13 B /sheet9 8 D	JTAG_TMS /page1 4 C /sheet17 11 E	MIC1N /sheet7 8 E	OE2_N /sheet9 6 A /sheet10 11 D	RTS				VDD8 /sheet5 5 C		
					BT_SBCK /sheet9 10 C /sheet16 15 D	CAMIF_DSP_CLK /sheet9 8 C /sheet19 11 D	FM_IN /sheet1 7 E /sheet18 4 D	GSM_PA_PWR_CTL_REF /sheet7 2 F /sheet13 10 C	JTAG_TRST_N /page1 4 D /sheet17 11 E	MIC1P /sheet7 8 E						VDD9 /sheet5 12 C		
					BT_SBDT /sheet9 10 C /sheet16 15 D	CAMIF_HSYNC /sheet9 10 D /sheet19 15 E	FM_RADIO_AUXIN /sheet7 8 F /sheet18 12 C	GSM_TX_CP /sheet3 13 D /sheet5 2 D	KEYSENSE_N(0) /sheet9 13 C /sheet20 10 D	MIC2N /sheet7 5 F								
					BT_SBST /sheet9 10 C /sheet16 15 D	CAMIF_PCLK /sheet9 10 D /sheet19 15 E	FM_RADIO_AUXIP /sheet7 8 F /sheet18 12 C	GSM_TX_VCO_FB /sheet3 13 C /sheet5 2 D	KEYSENSE_N(1) /sheet9 13 C /sheet20 10 D	MICBIAS /sheet7 8 E								
					BT_TX_RX_N	CAMIF_VSYNC	FUEL_GAUGE	HDET1	KEYSENSE_N(2) /sheet9 13 D	MICFBN /sheet7 10 F								

				DATE	24.05.2005	WOLF5 MAINBOARD B2.2.3 Assembly V1 TOP HIERARCHY LEVEL SCHEMATIC		1:1	
				USER	NB				
				APPR'D					
				MD PD HW4 MCH2					
						Siemens AG		177791	netlist1
3	31426	7.09.2005	WDM						

VERS.	CHANGE	NUMBER	DATE	NAME	(Created by BOM number: A5B00900188990-31426)				
-------	--------	--------	------	------	---	--	--	--	--

				DATE	24.05.2005	WOLF5 MAINBOARD B2.2.3 Assembly V1 TOP HIERARCHY LEVEL SCHEMATIC	1:1	
				USER	NB			
				APPR'D				
				MD PD HW4 MCH2		Siemens AG	177791	netlist1
3	31426	7.09.2005	WDM					
VERS.	CHANGE NUMBER	DATE	NAME	(Created by BOM number: A5B00900188990-31426)				

Proprietary data, company confidential.
All rights reserved

Als Betriebsgeheimnis anvertraut
Alle Rechte vorbehalten

1

2

3

4

5

VREG_MSMP
/sheet6 9 A
/sheet5 4 B
/page1 3 B
/sheet9 9 D
/sheet9 8 B
/sheet8 9 B
/sheet11 5 E
/sheet12 5 B
/sheet12 7 B
/sheet13 13 B
/sheet16 15 C
/sheet17 9 E
/sheet17 4 C
/sheet18 11 D
/sheet19 15 C
/sheet19 15 A
/sheet19 2 B
/sheet20 12 D
/sheet21 8 D
/sheet21 8 E
/sheet21 9 C
/sheet22 2 E

VREG_RFRX_0
/sheet2 5 C
/sheet2 7 A
/sheet5 9 B
/sheet13 14 B

VREG_RFRX_1
/sheet6 10 A
/sheet13 14 B

VREG_RFTX
/sheet4 9 D
/sheet4 9 A
/sheet3 8 A
/sheet3 10 C
/sheet5 13 A
/sheet13 14 B

VREG_SYNTH
/sheet5 8 B
/sheet13 13 B

VREG_TCXO
/sheet6 14 A
/sheet10 6 F
/sheet13 13 B
/sheet13 10 F

VREG_UIM
/sheet13 14 B
/sheet15 8 B

WCDMA_RX
/sheet6 2 D
/sheet2 12 G

WCDMA_TX
/sheet4 4 C
/sheet2 12 F

WDOG_EN
/sheet8 4 E
/sheet17 11 D
/sheet17 8 F
/sheet17 11 F

WE2_N
/sheet9 6 A
/sheet10 11 D
/sheet22 6 C

A

B

C

D

E

				DATE	24.05.2005	WOLF5 MAINBOARD B2.2.3 Assembly V1 TOP HIERARCHY LEVEL SCHEMATIC	1:1
				USER	NB		
				APPR'D			
				MD PD HW4 MCH2		177791	netlist2
				Siemens AG			
3	31426	7.09.2005	WDM				
VERS.	CHANGE NUMBER	DATE	NAME	(Created by BOM number: A5B00900188990-31426)			

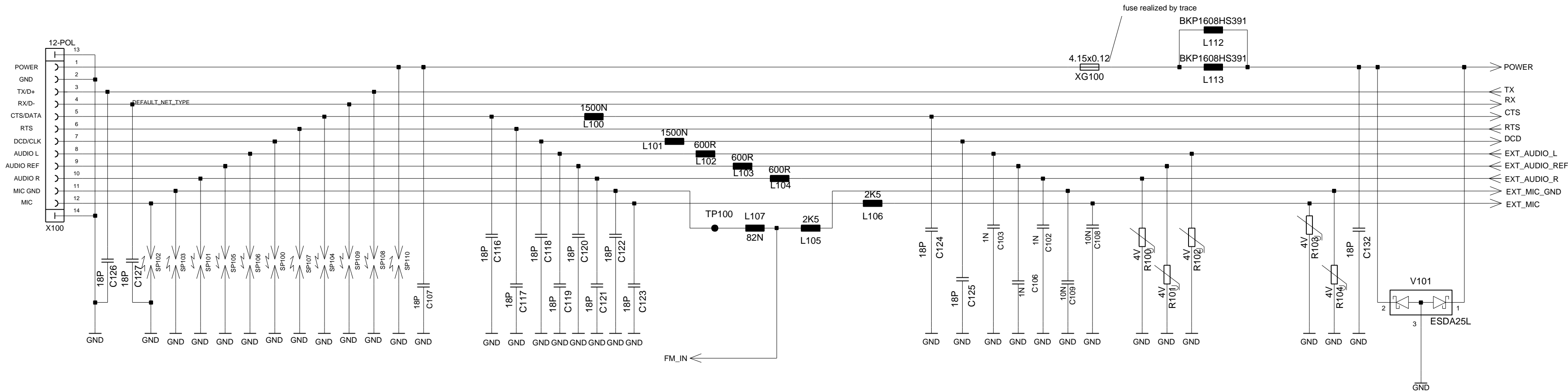
				DATE	24.05.2005	WOLF5 MAINBOARD B2.2.3 Assembly V1 TOP HIERARCHY LEVEL SCHEMATIC	1:1
				USER	NB		
				APPR'D			
				MD PD HW4 MCH2		177791	poslist1
				Siemens AG			
3	31426	7.09.2005	WDM				
VERS.	CHANGE NUMBER	DATE	NAME	(Created by BOM number: A5B00900188990-31426)			

Proprietary data, company confidential.
All rights reserved

Als Betriebsgeheimnis anvertraut
Alle Rechte vorbehalten

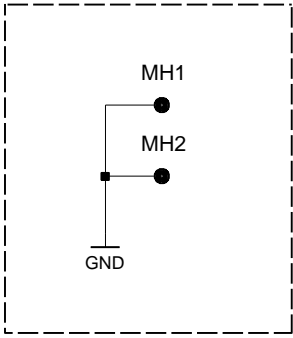
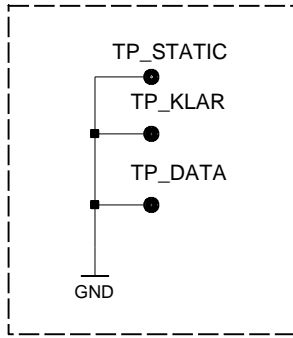
X100 /sheet1 2 D
X200 /sheet2 3 E
X600 /sheet6 2 C
X1100 /sheet11 1 F
X1400 /sheet14 3 D
X1500 /sheet15 5 D
X1900 /sheet19 1 F
X1901 /sheet19 7 D
X2000 /sheet20 3 D
X2201 /sheet22 12 E
X2202 /sheet22 13 C
X2203 /sheet22 13 C
X2204 /sheet22 13 C
X2205 /sheet22 14 C
X2206 /sheet22 14 C
X2207 /sheet22 15 C
X2208 /sheet22 15 C
X2209 /sheet22 13 D
X2210 /sheet22 13 D
X2211 /sheet22 14 D
X2212 /sheet22 15 D
X2213 /sheet22 14 D
X2214 /sheet22 15 D
Z200 /sheet2 9 E
Z201 /sheet2 9 E
Z202 /sheet2 8 F
Z203 /sheet2 7 F
Z300 /sheet3 9 D
Z400 /sheet4 5 C
Z401 /sheet4 11 C
Z402 /sheet4 10 E
Z600 /sheet6 3 C
Z601 /sheet6 3 C
Z602 /sheet6 6 F
Z1000 /sheet10 7 G
Z1200 /sheet12 8 C
Z1201 /sheet12 9 D
Z1300 /sheet13 4 B
Z1500 /sheet15 9 C
Z1600 /sheet16 4 D
Z1700 /sheet17 3 C

				DATE	24.05.2005	WOLF5 MAINBOARD B2.2.3 Assembly V1 TOP HIERARCHY LEVEL SCHEMATIC	1:1
				USER	NB		
				APPR'D			
					MD PD HW4 MCH2		
				Siemens AG		177791	poslist2
3	31426	7.09.2005	WDM				
VERS.	CHANGE NUMBER	DATE	NAME	(Created by BOM number: A5B00900188990-31426)			



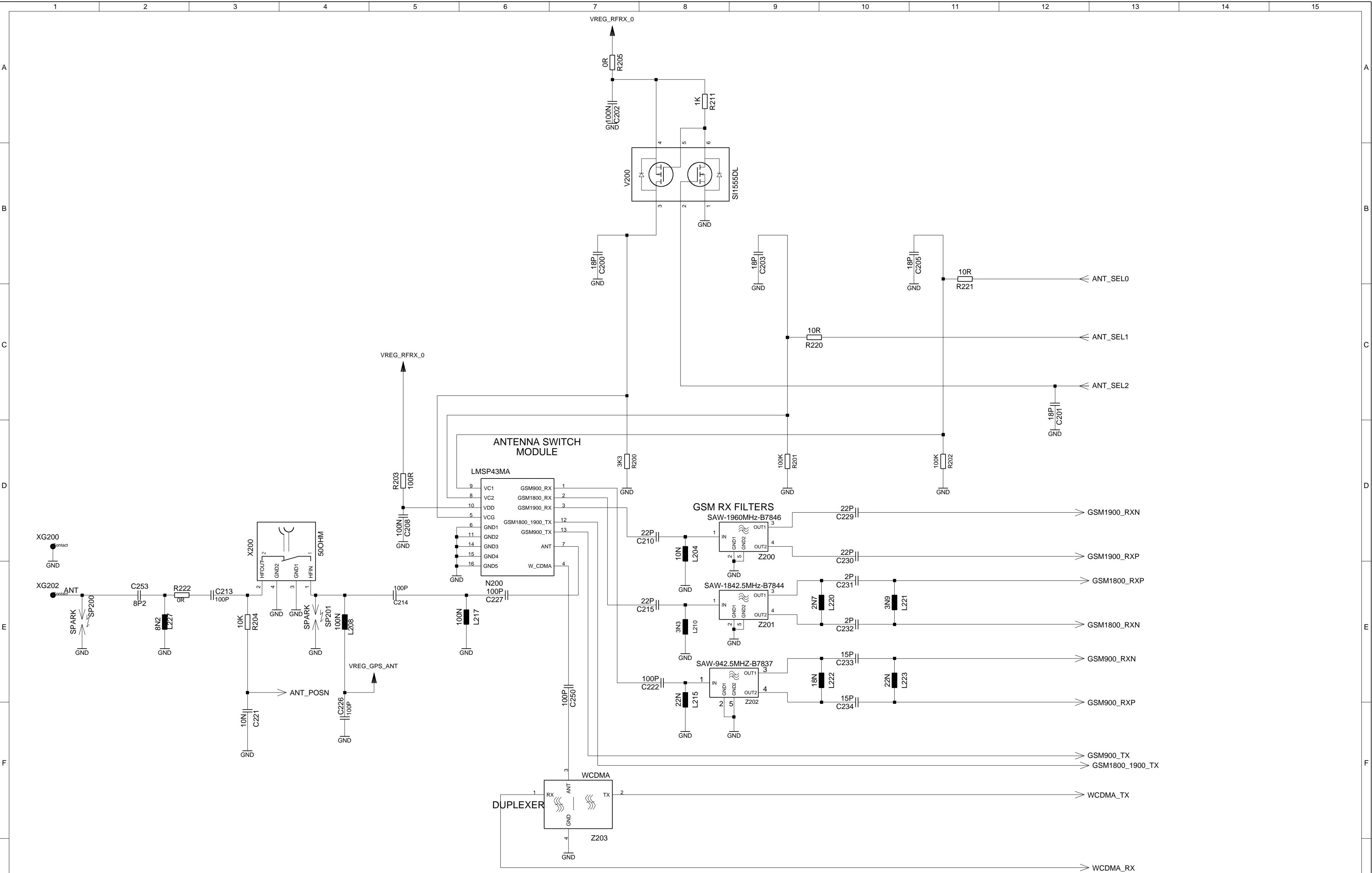
PCB PRODUCTION LABELS

MOUNTING HOLES



WOLF 5 - SYSTEM CONNECTOR

				DATE	24.05.2005	WOLF5 MAINBOARD B2.2.3 Assembly V1 TOP HIERARCHY LEVEL SCHEMATIC	1:1
				USER	NB		
				APPR'D			
				MD PD HW4 MCH2			
				Siemens AG			177791
3	31426	7.09.2005	WDM				
VERS.	CHANGE NUMBER	DATE	NAME	(Created by BOM number: A5B00900188990-31426)			



WOLF 5 - RF FRONT END

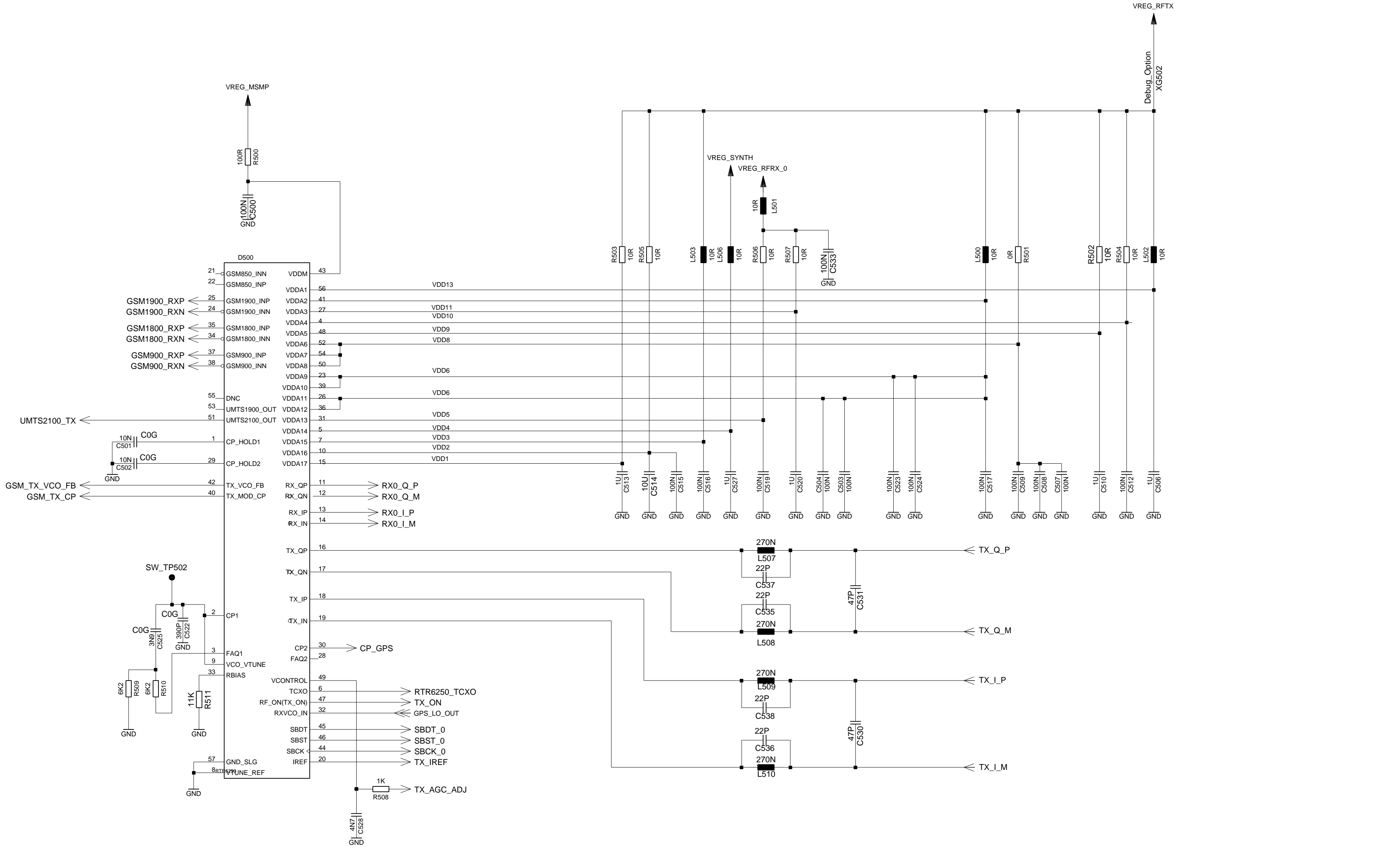
				DATE	24.05.2005	WOLF5 MAINBOARD B2.2.3 Assembly V1 TOP HIERARCHY LEVEL SCHEMATIC	1:1
				USER	NB		
				APPR'D			
				MD PD HW4 MCH2			
				Siemens AG		177791	sheet2
3	31426	7.09.2005		WDM	(Created by BOM number: A5B00900188990-31426)		
VERS.	CHANGE NUMBER	DATE		NAME			



				DATE	24.05.2005	WOLF5 MAINBOARD B2.2.3 Assembly V1 TOP HIERARCHY LEVEL SCHEMATIC	1:1
				USER	NB		
				APPR'D			
					MD PD HW4 MCH2		
					Siemens AG	177791	sheet4
3	31426	7.09.2005	WDM				
VERS.	CHANGE NUMBER	DATE	NAME			(Created by BOM number: A5B00900188990-31426)	

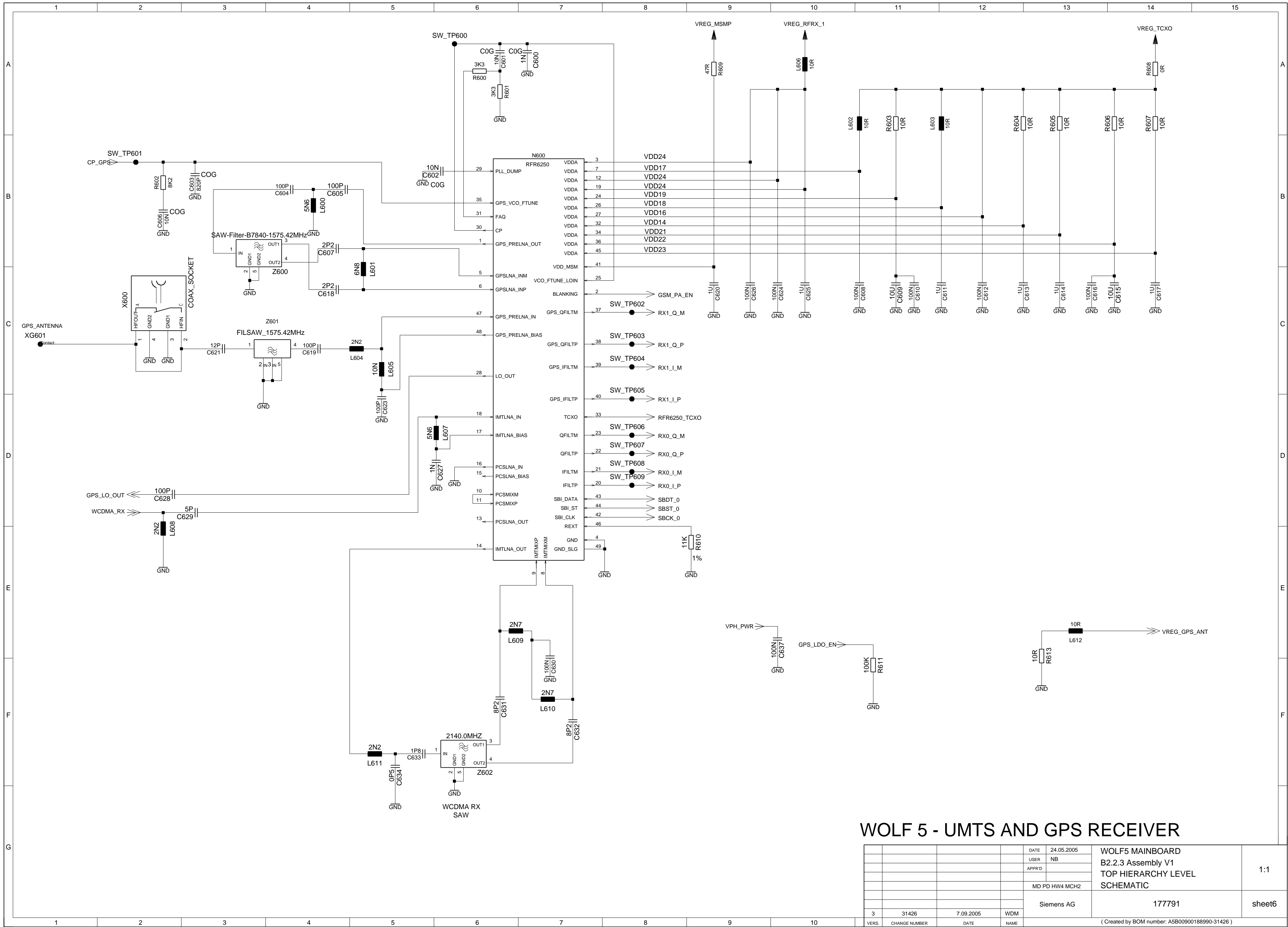
1 2 3 4 5 6 7 8 9 10 11 12 13 14 15

A
B
C
D
E
F
G



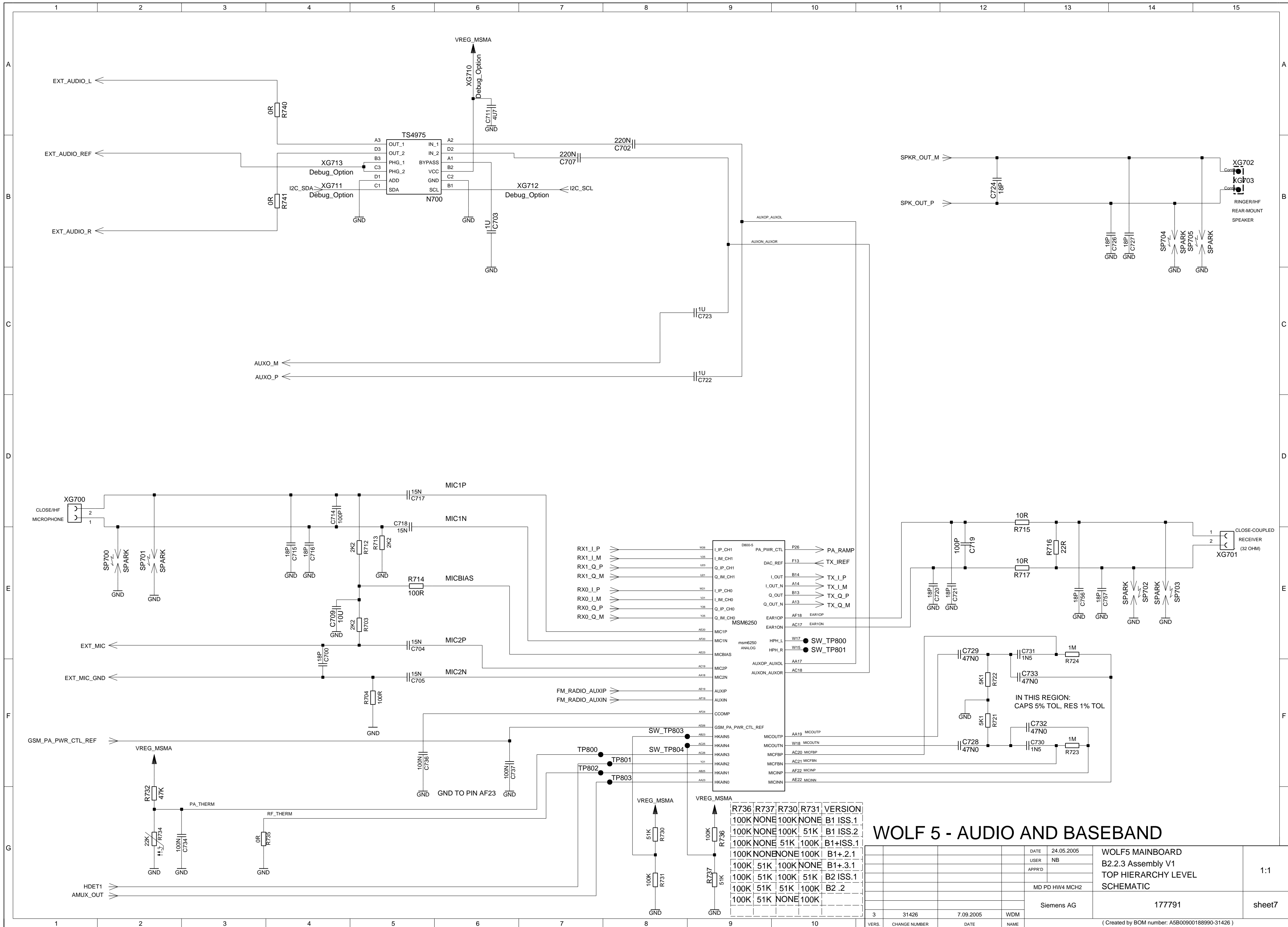
WOLF 5 - RF TRANSCEIVER

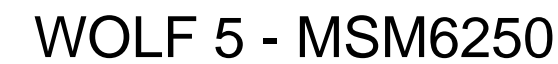
				DATE	24.05.2005	WOLF5 MAINBOARD B2.2.3 Assembly V1 TOP HIERARCHY LEVEL SCHEMATIC	1:1
				USER	NB		
				APPR'D			
				MD PD HW4 MCH2			
				Siemens AG			
3	31426	7.09.2005	WDM	177791			sheet5
VERS.	CHANGE NUMBER	DATE	NAME	(Created by BOM number: A5B00900188990-31426)			



WOLF 5 - UMTS AND GPS RECEIVER

				DATE	24.05.2005	WOLF5 MAINBOARD B2.2.3 Assembly V1 TOP HIERARCHY LEVEL SCHEMATIC	1:1
				USER	NB		
				APPR'D			
				MD PD HW4 MCH2			
				Siemens AG		177791	sheet6
3	31426	7.09.2005	WDM				
VERS.	CHANGE NUMBER	DATE	NAME	(Created by BOM number: A5B00900188990-31426)			

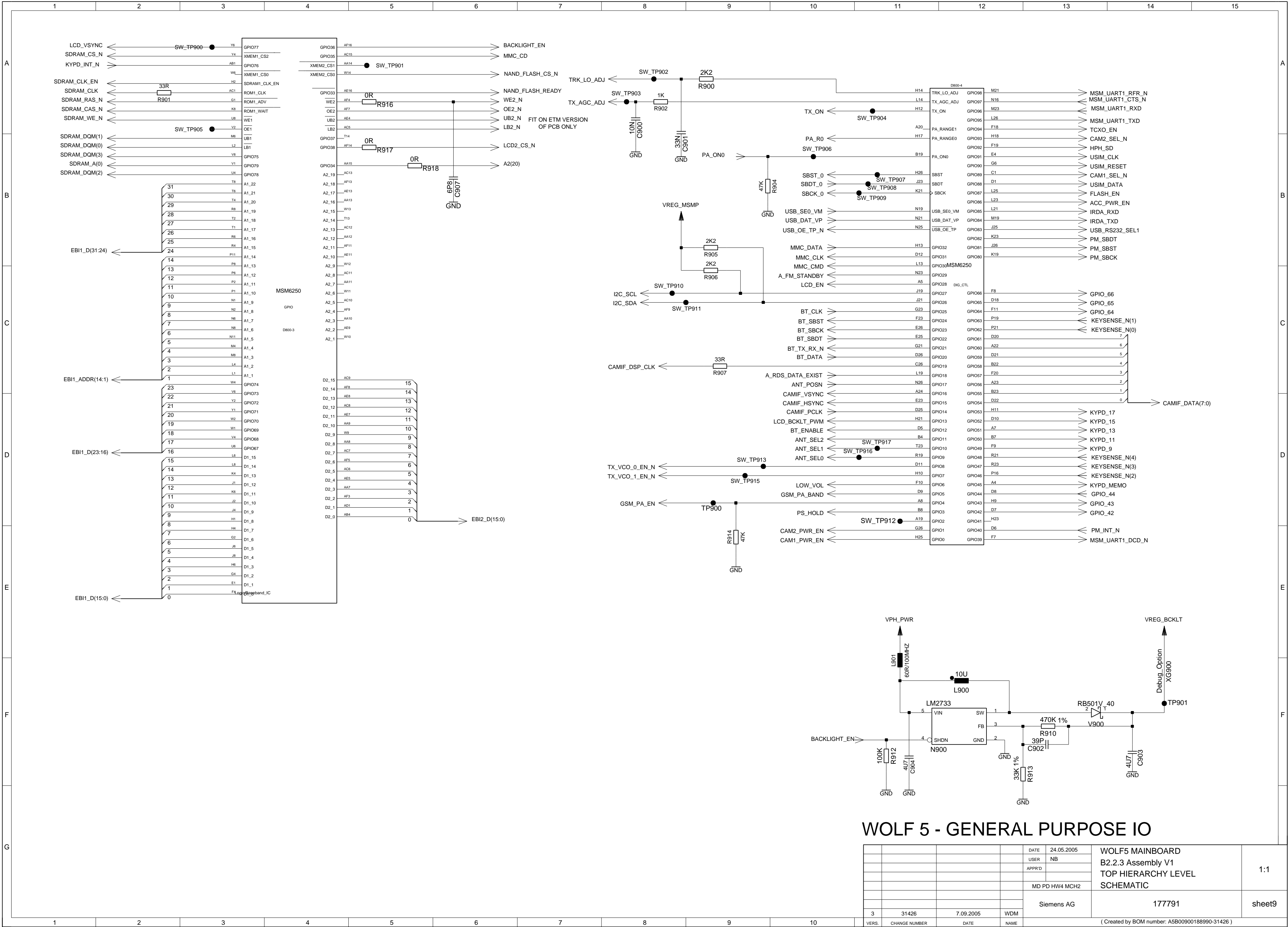




				DATE	24.05.2005	WOLF5 MAINBOARD B2.2.3 Assembly V1 TOP HIERARCHY LEVEL SCHEMATIC	1:1
				USER	NB		
				APPR'D			
				MD PD HW4 MCH2			
				Siemens AG		177791	sheet8
3	31426	7.09.2005	WDM				
VERS.	CHANGE NUMBER	DATE	NAME	(Created by BOM number: A5B00900188990-31426)			

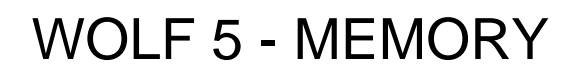
Proprietary data. Company confidential.
all rights reserved

Als Betriebsgeheimnis anvertraut
alle Rechte vorbehalten

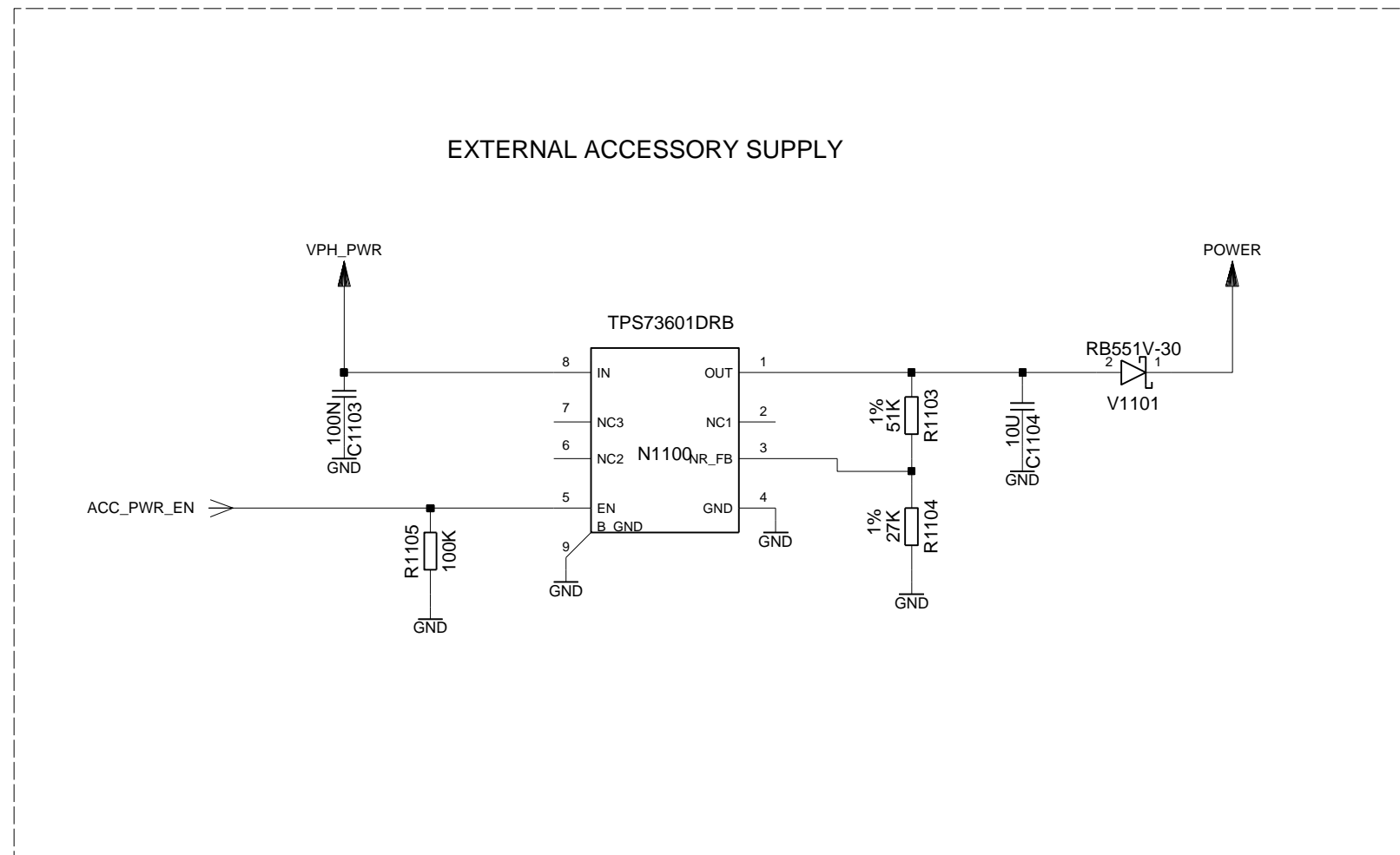


WOLF 5 - GENERAL PURPOSE IO

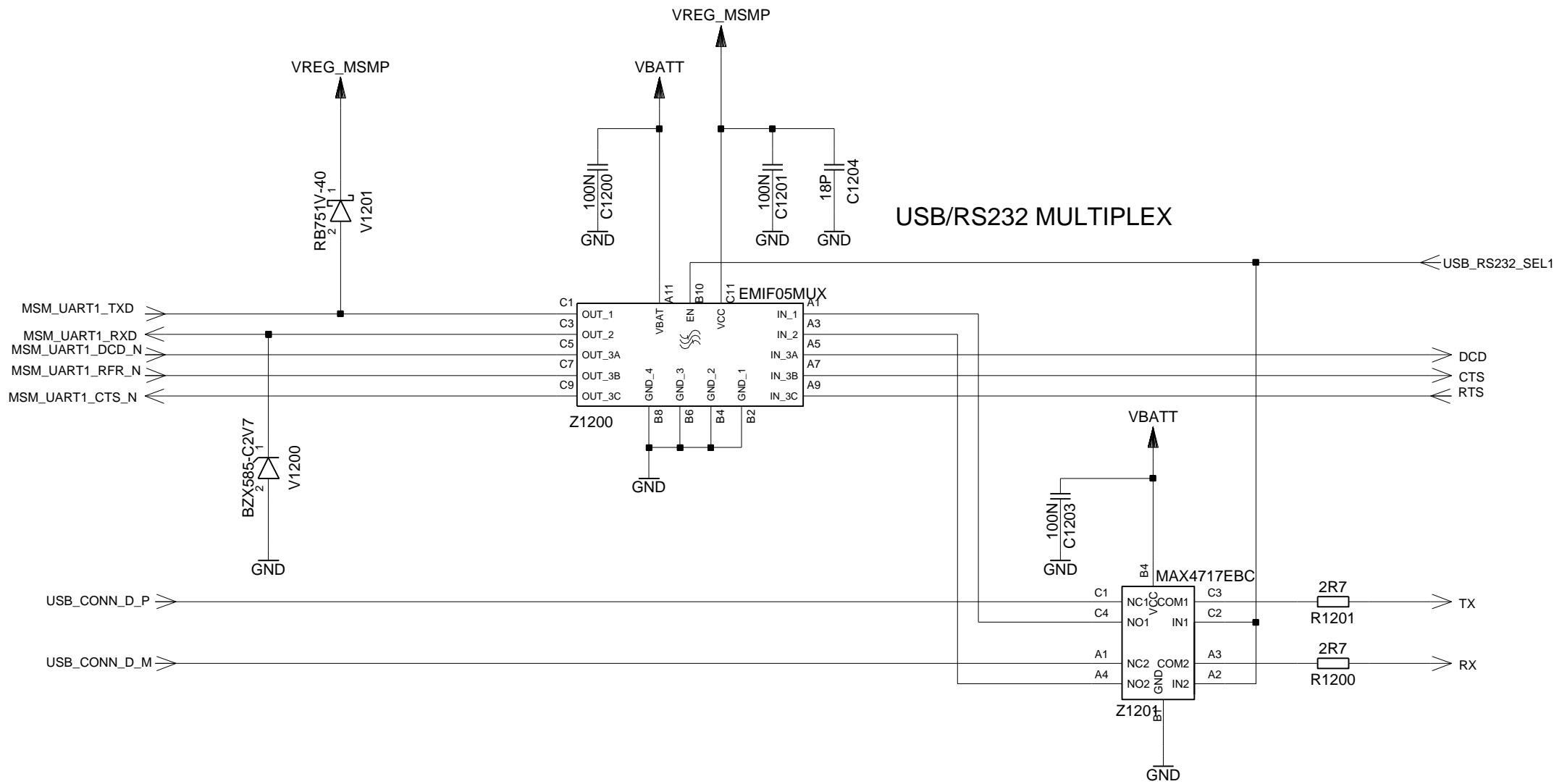
				DATE	24.05.2005	WOLF5 MAINBOARD B2.2.3 Assembly V1 TOP HIERARCHY LEVEL SCHEMATIC	1:1
				USER	NB		
				APPR'D			
				MD PD HW4 MCH2			
				Siemens AG		177791	sheet9
3	31426	7.09.2005	WDM				
VERS.	CHANGE NUMBER	DATE	NAME	(Created by BOM number: A5B00900188990-31426)			



				DATE	24.05.2005	WOLF5 MAINBOARD B2.2.3 Assembly V1 TOP HIERARCHY LEVEL SCHEMATIC	1:1
				USER	NB		
				APPR'D			
					MD PD HW4 MCH2		
					Siemens AG	177791	sheet10
3	31426	7.09.2005	WDM				
VERS.	CHANGE NUMBER	DATE	NAME	(Created by BOM number: A5B00900188990-31426)			



				DATE	24.05.2005	WOLF5 MAINBOARD B2.2.3 Assembly V1 TOP HIERARCHY LEVEL SCHEMATIC	1:1
				USER	NB		
				APPR'D			
				MD PD HW4 MCH2			
				Siemens AG		177791	sheet11
3	31426	7.09.2005	WDM	(Created by BOM number: A5B00900188990-31426)			
VERS.	CHANGE NUMBER	DATE	NAME				

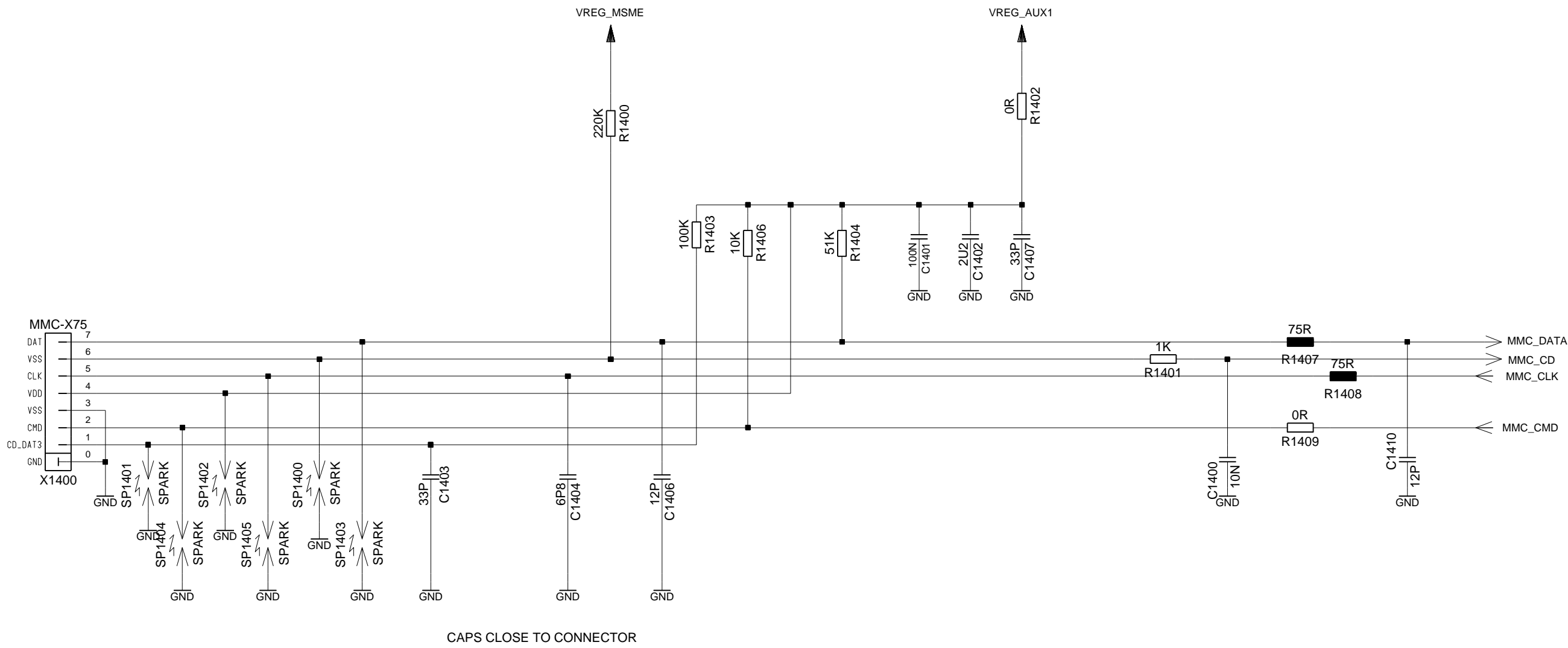


WOLF 5 - USB/RS232 MULTIPLEX

				DATE	24.05.2005	WOLF5 MAINBOARD B2.2.3 Assembly V1 TOP HIERARCHY LEVEL SCHEMATIC	1:1
				USER	NB		
				APPR'D			
				MD PD HW4 MCH2			
				Siemens AG		177791	sheet12
3	31426	7.09.2005	WDM	(Created by BOM number: A5B00900188990-31426)			
VERS.	CHANGE NUMBER	DATE	NAME				

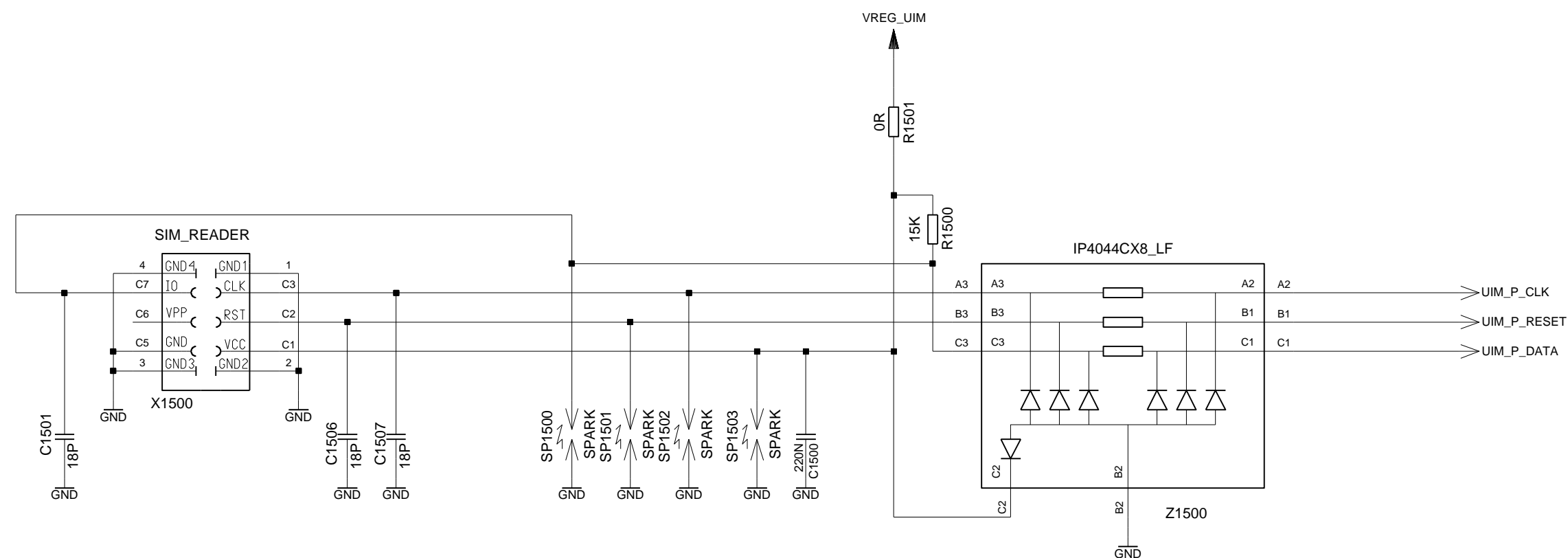
Proprietary data, Company confidential.
all rights reserved

Als Betriebsgeheimnis anvertraut
alle Rechte vorbehalten



WOLF 5 - MULTIMEDIA CARD

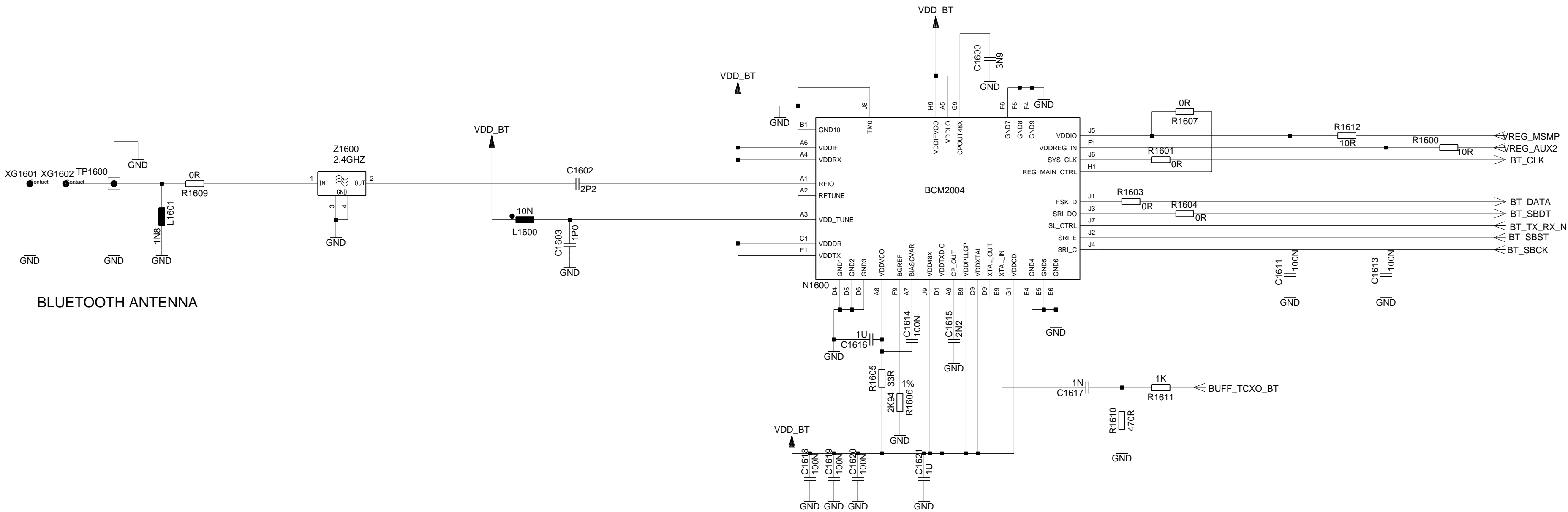
				DATE	24.05.2005	WOLF5 MAINBOARD B2.2.3 Assembly V1 TOP HIERARCHY LEVEL SCHEMATIC	1:1
				USER	NB		
				APPR'D			
				MD PD HW4 MCH2			
				Siemens AG		177791	sheet14
3	31426	7.09.2005		WDM	(Created by BOM number: A5B00900188990-31426)		
VERS.	CHANGE NUMBER	DATE	NAME				



				DATE	24.05.2005	WOLF5 MAINBOARD B2.2.3 Assembly V1 TOP HIERARCHY LEVEL SCHEMATIC	1:1
				USER	NB		
				APPR'D			
					MD PD HW4 MCH2		
					Siemens AG	177791	sheet15
3	31426	7.09.2005	WDM				
VERS.	CHANGE NUMBER	DATE	NAME			(Created by BOM number: A5B00900188990-31426)	

Proprietary data, Company confidential.
all rights reserved

Als Betriebsgeheimnis anvertraut
alle Rechte vorbehalten



WOLF 5 - BLUETOOTH

				DATE	24.05.2005	WOLF5 MAINBOARD B2.2.3 Assembly V1 TOP HIERARCHY LEVEL SCHEMATIC	1:1
				USER	NB		
				APPR'D			
				MD PD HW4 MCH2			
				Siemens AG		177791	sheet16
3	31426	7.09.2005	WDM				
VERS.	CHANGE NUMBER	DATE	NAME	(Created by BOM number: A5B00900188990-31426)			

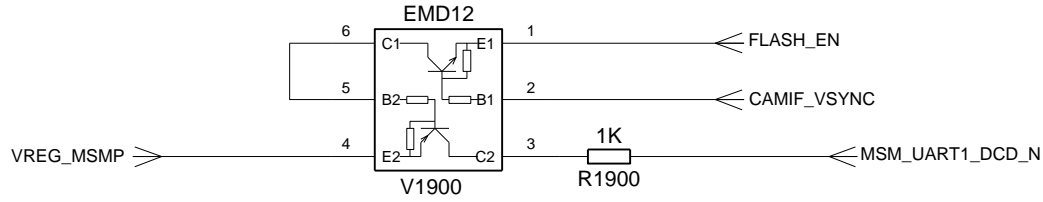


				DATE	24.05.2005	WOLF5 MAINBOARD B2.2.3 Assembly V1 TOP HIERARCHY LEVEL SCHEMATIC	1:1
				USER	NB		
				APPR'D			
					MD PD HW4 MCH2		
					Siemens AG	177791	sheet17
3	31426	7.09.2005	WDM				
VERS.	CHANGE NUMBER	DATE	NAME			(Created by BOM number: A5B00900188990-31426)	

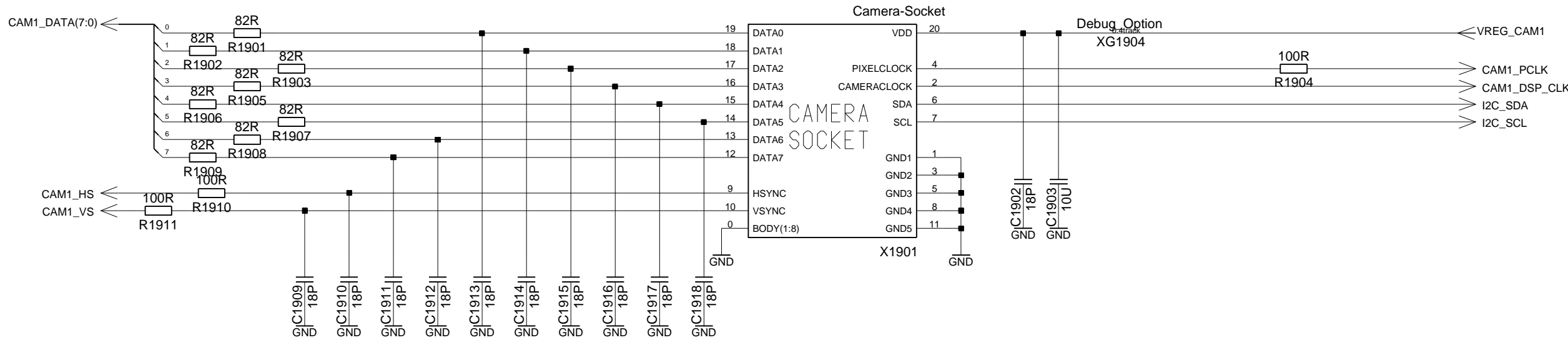
Proprietary data, Company confidential.
all rights reserved

Als Betriebsgeheimnis anvertraut
alle Rechte vorbehalten

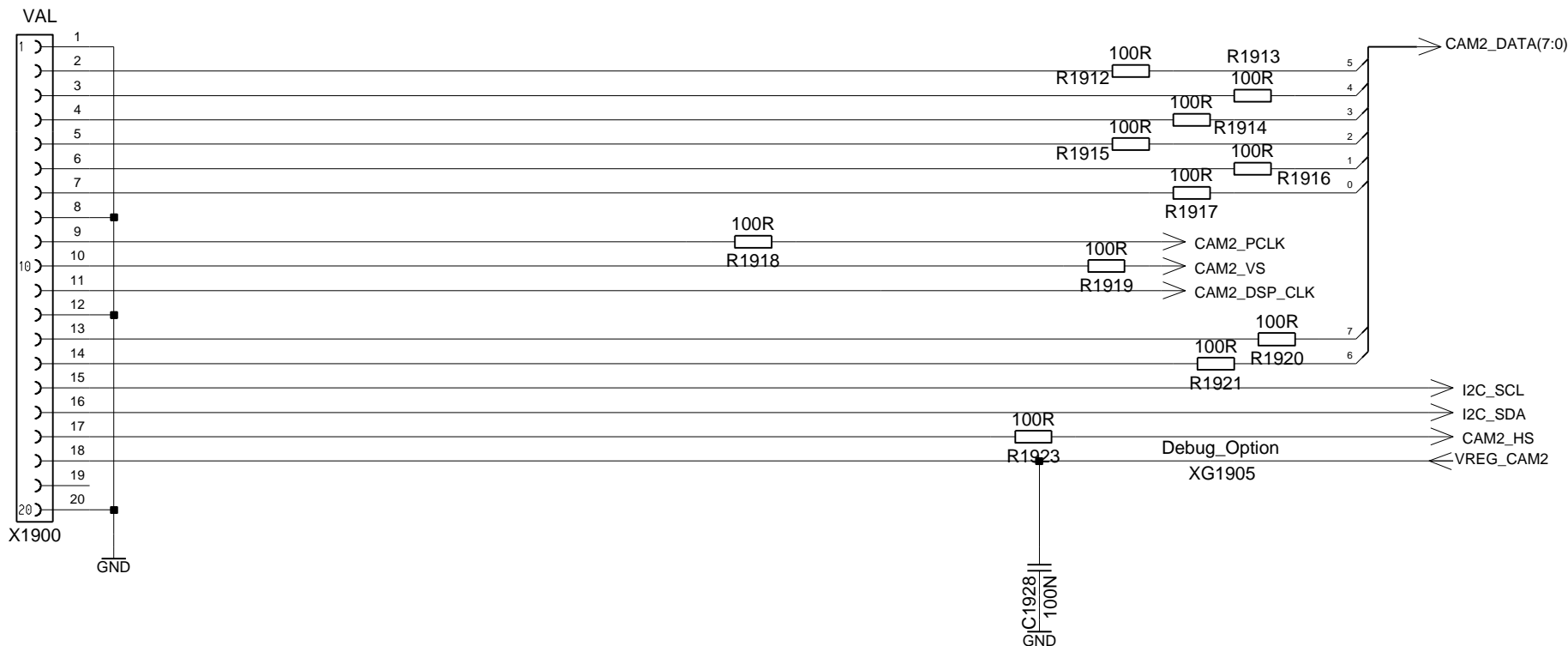
CAMERA SYNC



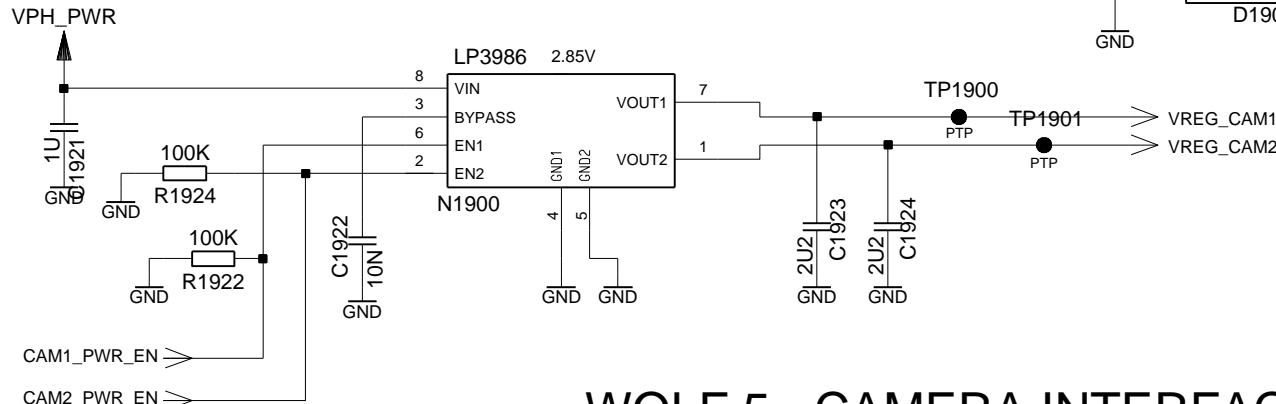
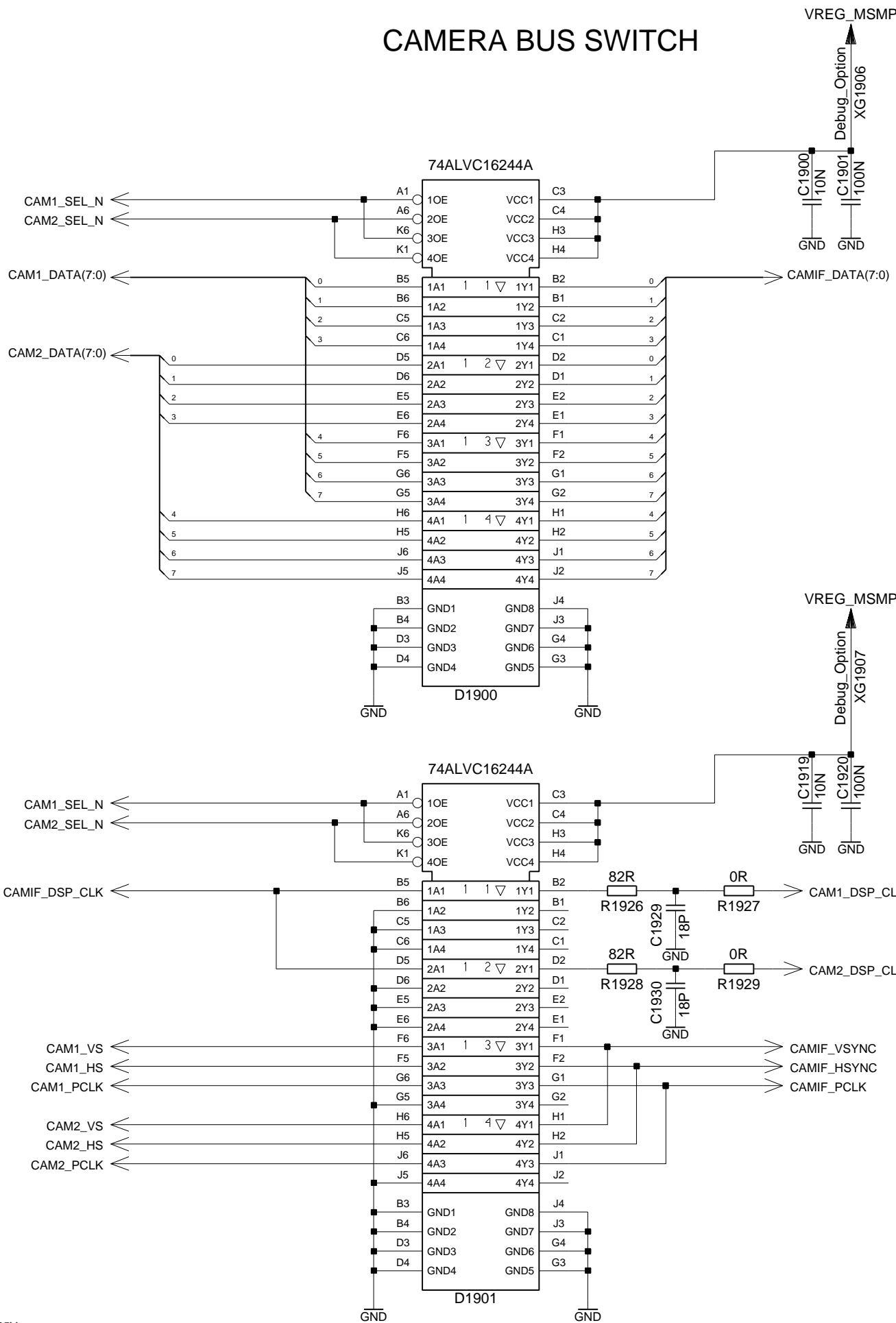
CAMERA 1 INTERFACE



CAMERA 2 INTERFACE

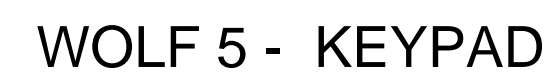


CAMERA BUS SWITCH

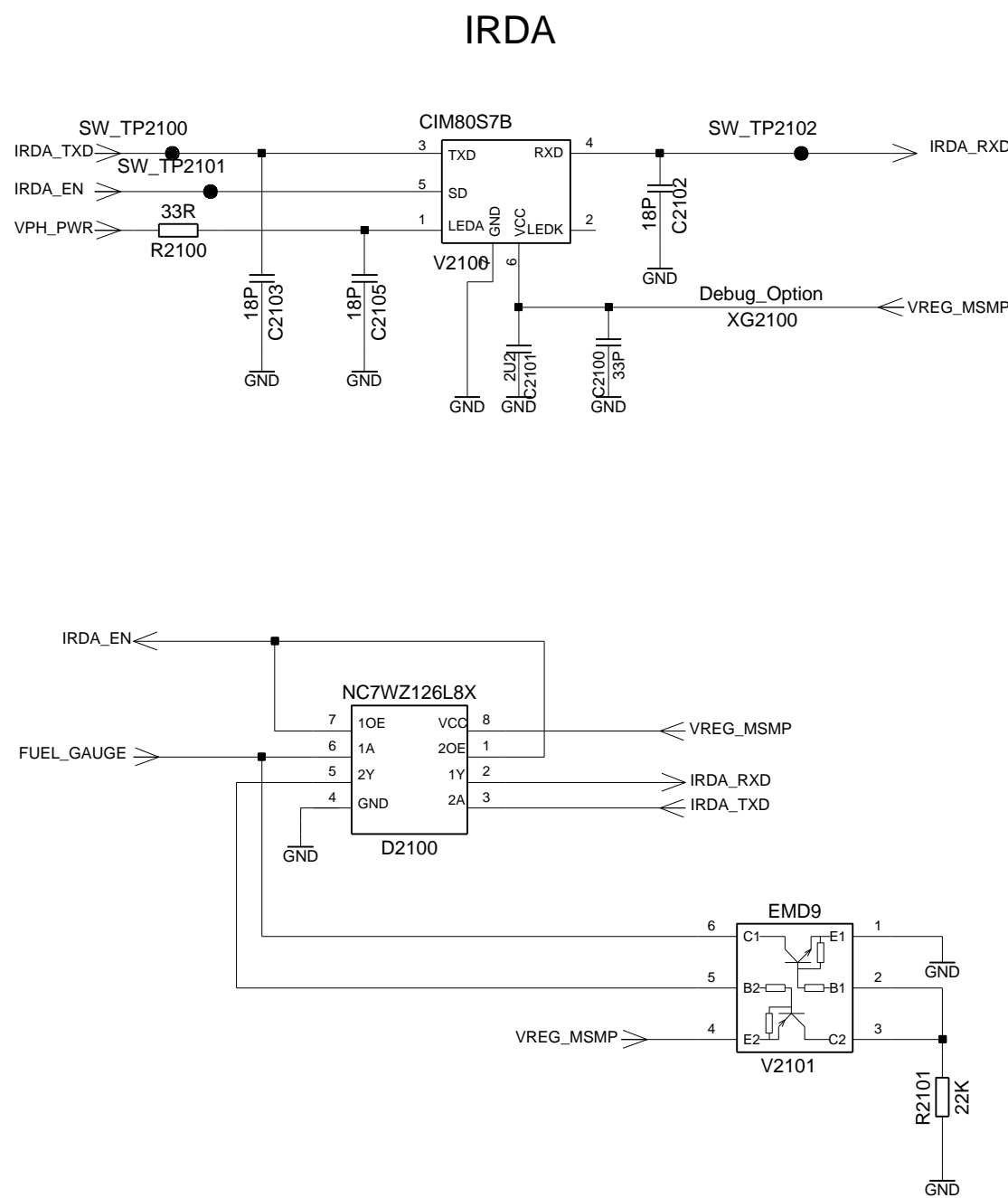


WOLF 5 - CAMERA INTERFACE

				DATE	24.05.2005	WOLF5 MAINBOARD B2.2.3 Assembly V1 TOP HIERARCHY LEVEL SCHEMATIC	1:1
				USER	NB		
				APPR'D			
				MD PD HW4 MCH2			
				Siemens AG		177791	sheet19
3	31426	7.09.2005	WDM				
VERS.	CHANGE NUMBER	DATE	NAME	(Created by BOM number: A5B00900188990-31426)			



				DATE	24.05.2005	WOLF5 MAINBOARD B2.2.3 Assembly V1 TOP HIERARCHY LEVEL SCHEMATIC	1:1
				USER	NB		
				APPR'D			
				MD PD HW4 MCH2			
				Siemens AG		177791	sheet20
3	31426	7.09.2005	WDM	(Created by BOM number: A5B00900188990-31426)			
VERS.	CHANGE NUMBER	DATE	NAME				



WOLF 5 - IRDA AND FUEL GAUGE

				DATE	24.05.2005	WOLF5 MAINBOARD B2.2.3 Assembly V1 TOP HIERARCHY LEVEL SCHEMATIC	1:1
				USER	NB		
				APPR'D			
				MD PD HW4 MCH2			
				Siemens AG		177791	sheet21
3	31426	7.09.2005	WDM	(Created by BOM number: A5B00900188990-31426)			
VERS.	CHANGE NUMBER	DATE	NAME				

Proprietary data, Company confidential.
all rights reserved

Als Betriebsgeheimnis anvertraut
alle Rechte vorbehalten

1 2 3 4 5 6 7 8 9 10 11 12 13 14 15

A

A

B

B

C

C

D

D

E

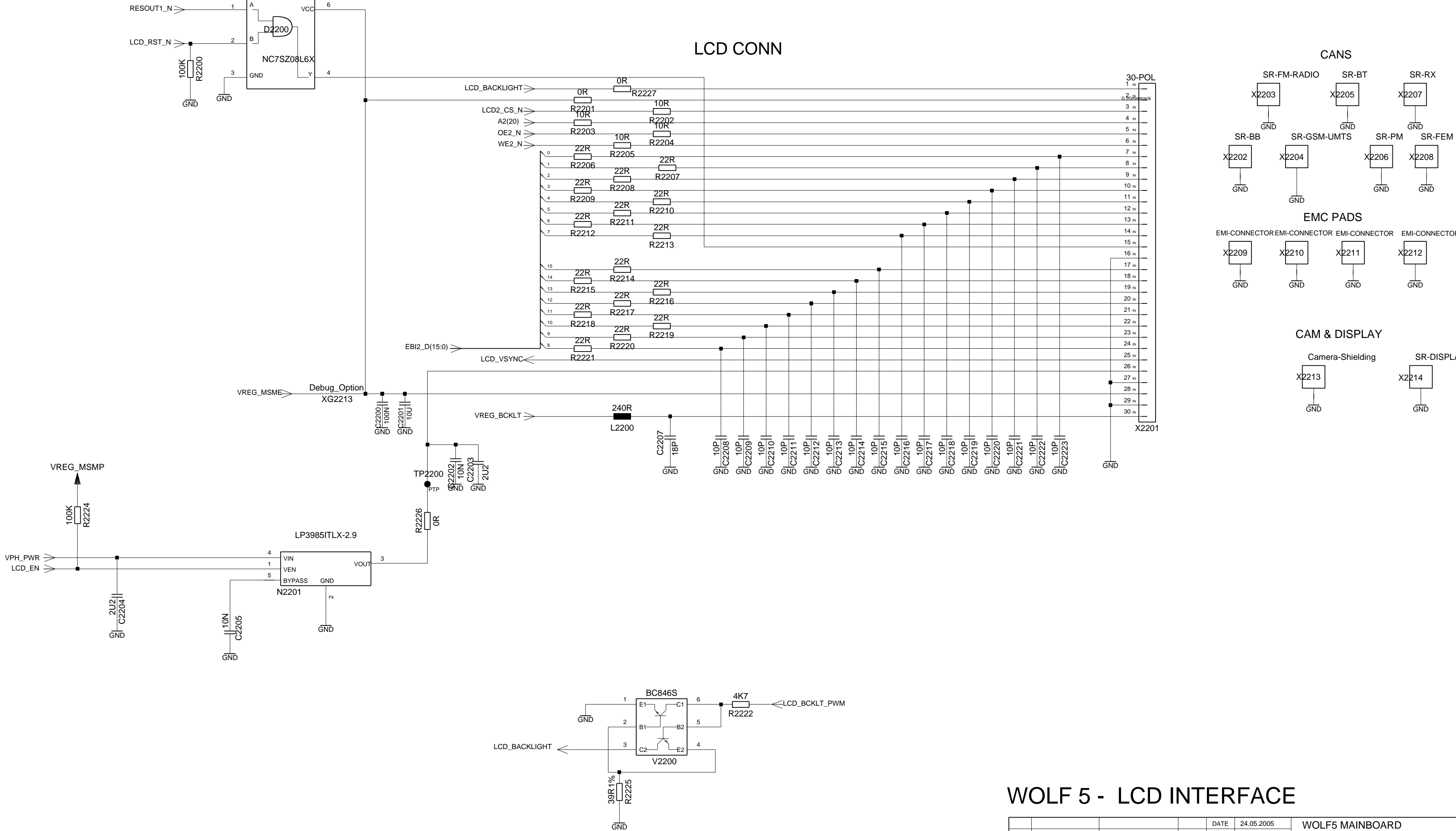
E

F

F

G

G



WOLF 5 - LCD INTERFACE

				DATE	24.05.2005	WOLF5 MAINBOARD B2.2.3 Assembly V1 TOP HIERARCHY LEVEL SCHEMATIC	1:1
				USER	NB		
				APPR'D			
				MD PD HW4 MCH2			
				Siemens AG		177791	sheet22
3	31426	7.09.2005	WDM	(Created by BOM number: A5B00900188990-31426)			
VERS.	CHANGE NUMBER	DATE	NAME				

Proprietary data, Company confidential.
all rights reserved

Als Betriebsgeheimnis anvertraut
alle Rechte vorbehalten

	1	2	3	4	5	6	7	8	9	10	11	12	13	14	15
A															
B															
C															
D															
E															
F															
G															

WOLF 5 - JTAG INTERFACE

				DATE	24.05.2005	WOLF5 MAINBOARD B2.2.3 Assembly V1 TOP HIERARCHY LEVEL SCHEMATIC	1:1
				USER	NB		
				APPR'D			
				MD PD HW4 MCH2			
				Siemens AG		177791	sheet23
3	31426	7.09.2005	WDM	(Created by BOM number: A5B00900188990-31426)			
VERS.	CHANGE NUMBER	DATE	NAME				

PROPRIETARY DATA, COMPANY CONFIDENTIAL
ALL RIGHTS RESERVED

ALS BETRIEBSGEHEIMNIS ANVERTRAUT
ALLE RECHTE VORBEHALTEN

1 2 3 4 5 6 7 8 9 10

A

A

B

B

C

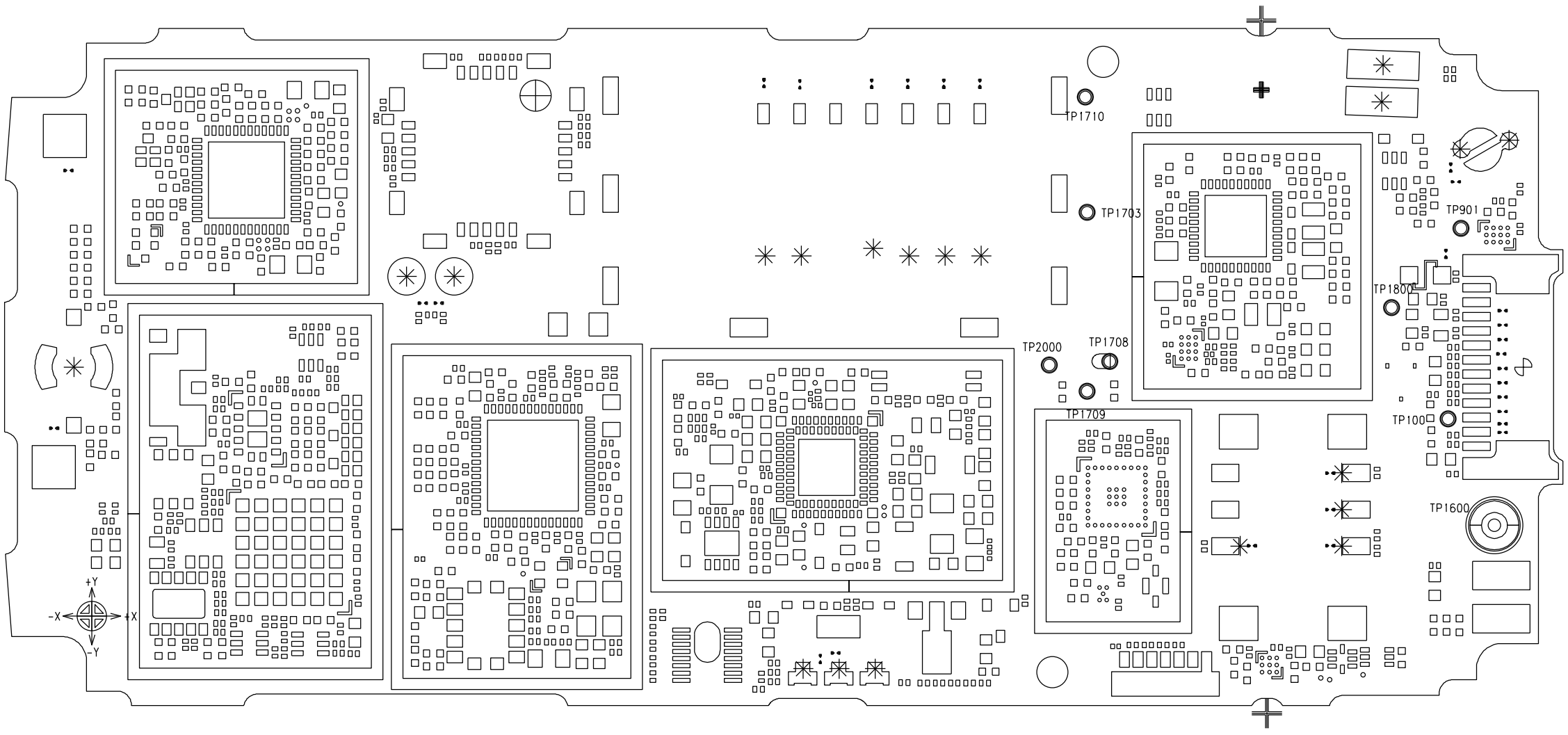
C

D

D

E

1 2 3 4 5

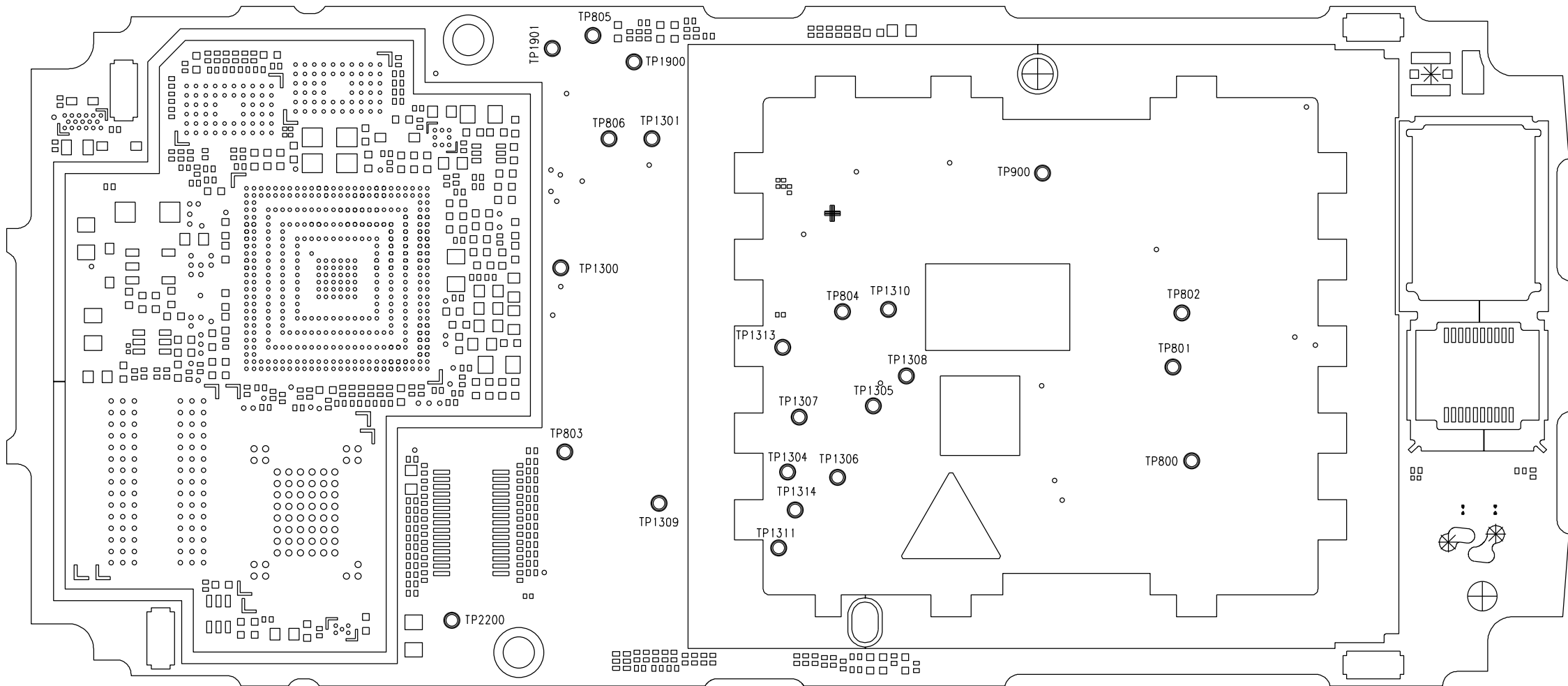


TP100	9B
TP901	9B
TP1600	9C
TP1703	7B
TP1708	7B
TP1709	7B
TP1710	7A
TP1800	9B
TP2000	7B

				DATE	24.05.2005	WOLF5 MAINBOARD B2 .2 Assembly V1 TESTPOINT DIAGRAMM (SIDE 1)	3:1
				NAME	NB		
				APPR'D			
				STD			
				MD PD HW4 MCH2		SIEMENS AG	SHEET 1+
1	27714	24.06.2005	WDM			177793	
VERS.	CHANGE NUMBER	DATE	NAME	(Created by BOM number: A5B00900188990-27714)			

PROPRIETARY DATA, COMPANY CONFIDENTIAL
ALL RIGHTS RESERVED

ALS BETRIEBSGEHEIMNIS ANVERTRAUT
ALLE RECHTE VORBEHALTEN

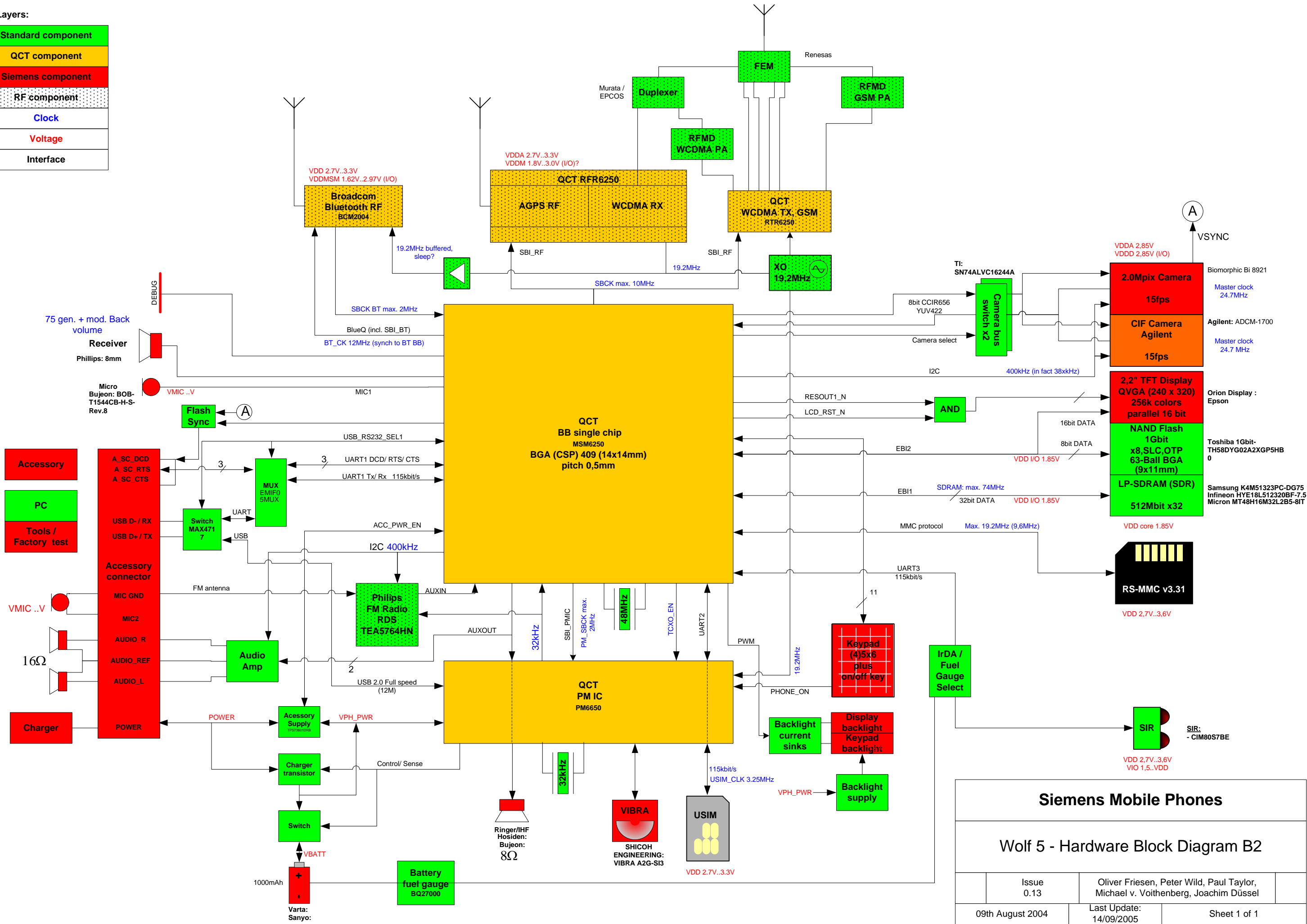


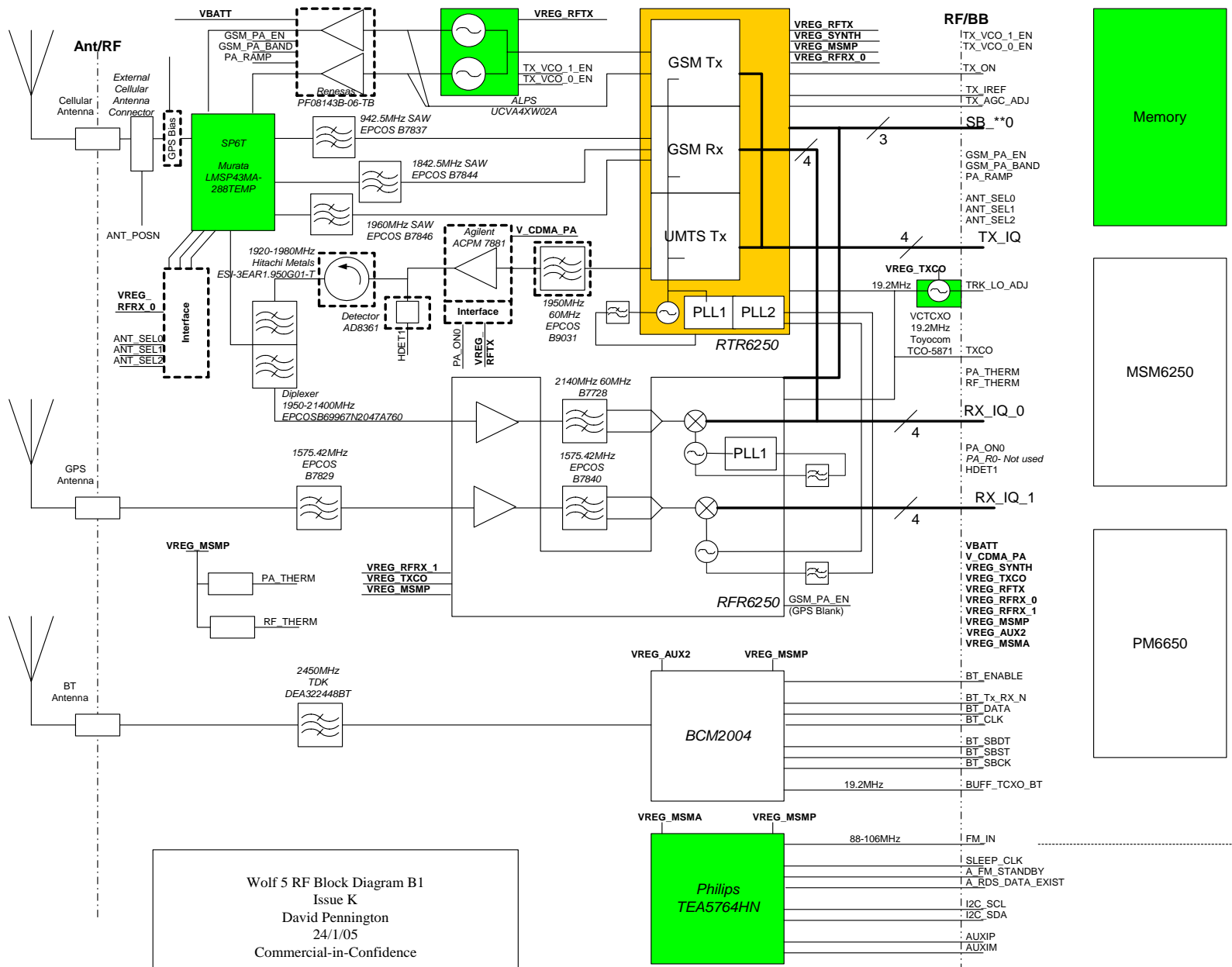
TP800	8C	TP1310	6B
TP801	8B	TP1311	6C
TP802	8B	TP1313	6B
TP803	5B	TP1314	6C
TP804	6B	TP1900	5A
TP805	5A	TP1901	4A
TP806	5A	TP2200	4C
TP900	7A		
TP1300	5B		
TP1301	5A		
TP1304	6C		
TP1305	6B		
TP1306	6C		
TP1307	6B		
TP1308	6B		
TP1309	5C		

				DATE	24.05.2005	WOLF5 MAINBOARD B2 .2 Assembly V1 TESTPOINT DIAGRAMM (SIDE 2)	3:1
				NAME	NB		
				APPR'D			
				STD			
				MD PD HW4 MCH2		177793	SHEET 2-
				SIEMENS AG			
1	27714	24.06.2005	WDM				
VERS.	CHANGE NUMBER	DATE	NAME	(Created by BOM number: A5B00900188990-27714)			

Layers:

Standard component
QCT component
Siemens component
RF component
Clock
Voltage
Interface





Battery
SIM
MMC
Screen
Camera1
Camera2
Accessory
Connect
J-TAG
Keypad
Audio
IRDa
USB
etc

FM Antenna