

# Service Repair Documentation

## Level 2.5 – CF75 / CF76



Release	Date	Department	Notes to change
1.0	02.08.2005	ICM MP CC GRM T	New document

## Introduction

This Service Repair Documentation is intended to carry out repairs on Siemens repair level 2.5Light. The described failures shall be repaired in Siemens authorized local workshops only.

The level 2.5light (former Level 2.5 ) partners are obliged to repair boards, up to their repair level, under consideration of the information given by level 2.5Light (former level 2.5) repair instruction.

All repairs have to be carried out in an ESD protected environment and with ESD protected equipment/tools. For all activities the international ESD regulations have to be considered.

Assembling/disassembling has to be done according to the latest CF75, CF76 Level 2 repair documentation. It has to be ensured that every repaired mobile Phone is checked according to the latest released General Test Instruction document (both documents are available in the Technical Support section of the C-market).

Check at least weekly C-market for updates and consider all CF75, CF76 related Customer Care Information

CF75 Partnumber on IMEI label: S30880-S6010-#xxx  
CF76 Partnumber on IMEI label: S30880-S6090-#xxx

, while # may be any letter (A-Z) and xxx may be any number from 100, 101, 102....

**Scrap Handling: All Scrap information given in this manual are related to the SCRAP-Rules and instructions.**

**Attention:**

- Consider the new "LEAD-FREE" soldering rules (available in the communication market)
- Avoid excessive heat.

If you have any questions regarding the repair procedures or technical questions do not hesitate to contact our technical support team in Kamp-Lintfort, Germany:

Tel.: +49 2842 95 4666  
Fax: +49 2842 95 4302  
E-mail: st-support@siemens.com

**Table of Content**

1 CF75, CF76 board layout .....4

2 Connector SIM Card Reader .....5

3 Connector IO Jack.....6

4 Connector Board to Board.....7

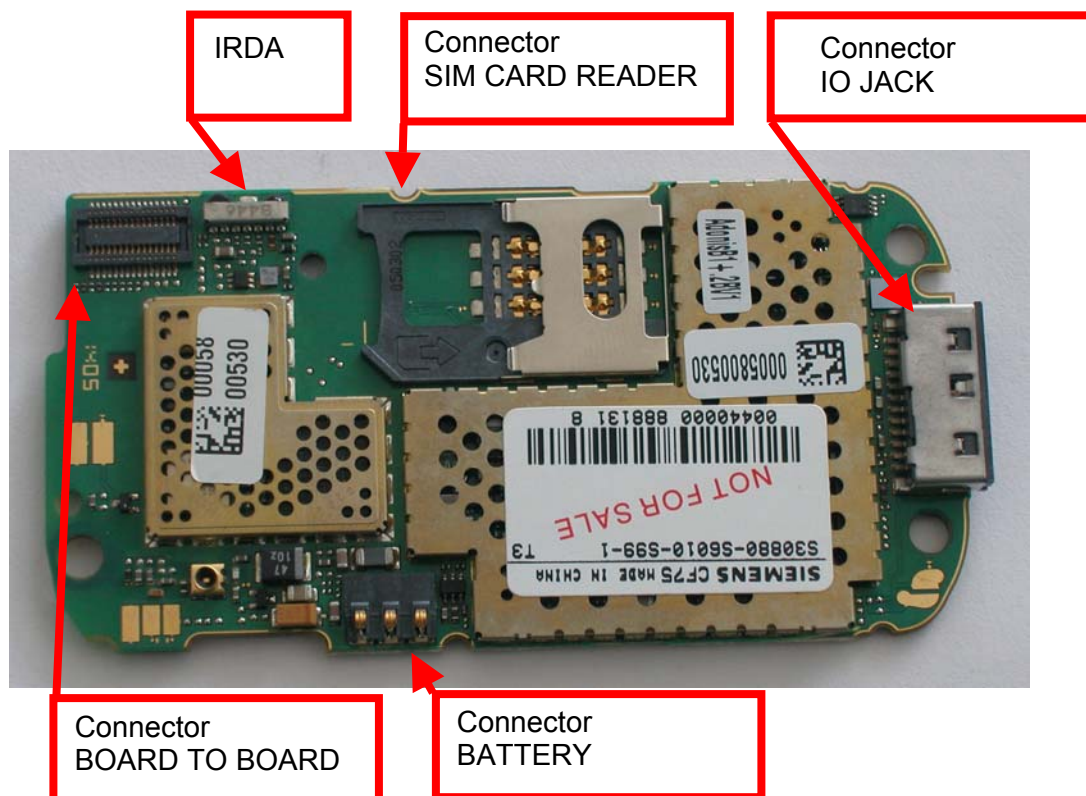
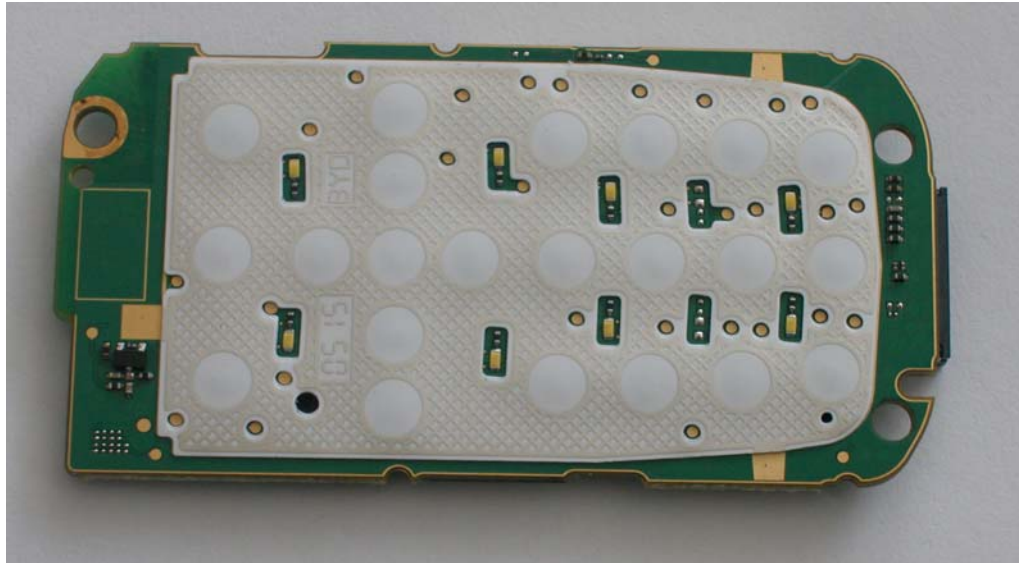
5 Connector Battery .....8

6 IRDA.....9

## 1 CF75, CF76 board layout

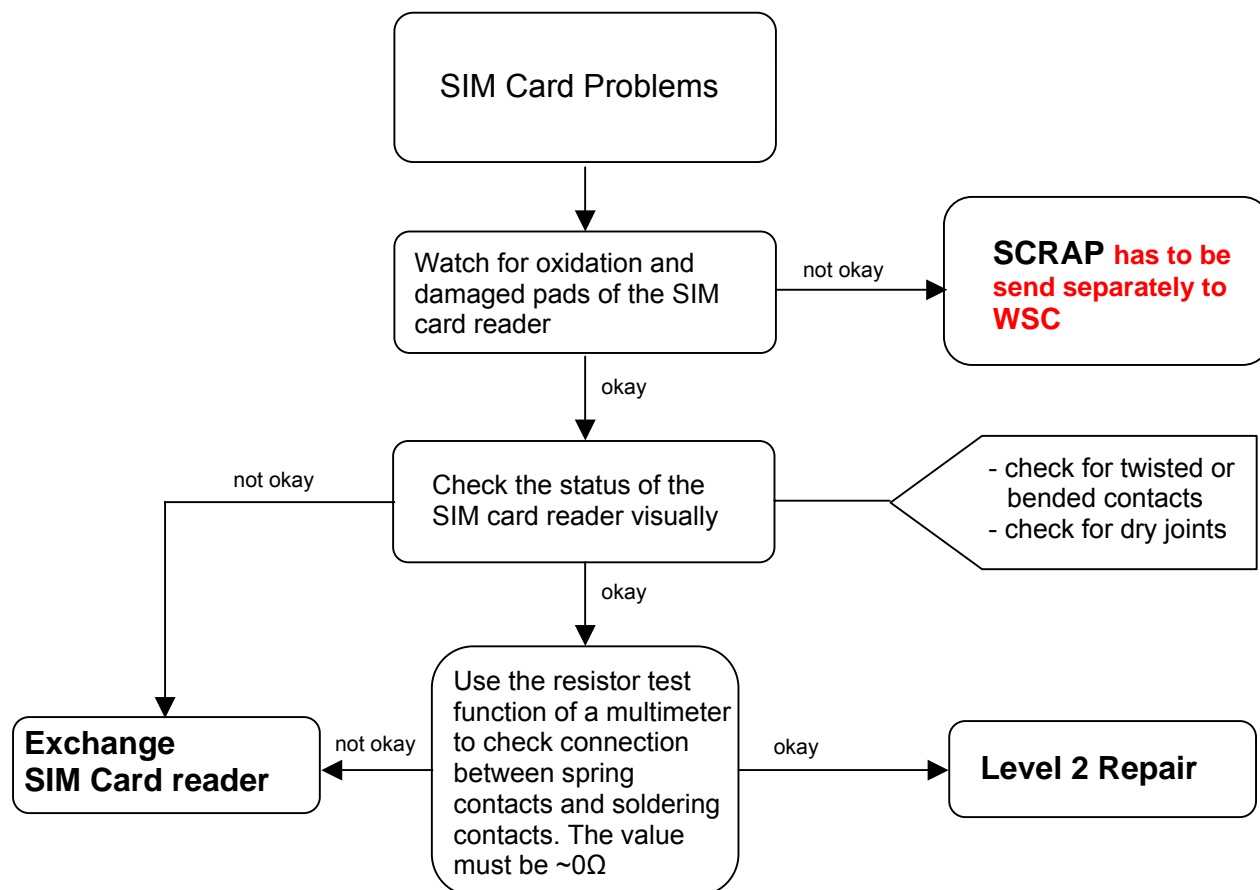
Jigs, Tools and Working materials for all described repairs:

- hot air blower
- soldering gun
- tweezers
- flux
- solder



## 2 Connector SIM Card Reader

Fault Symptoms	
Customer: Handset does not accept SIM card	GRT: SIM Card Problems



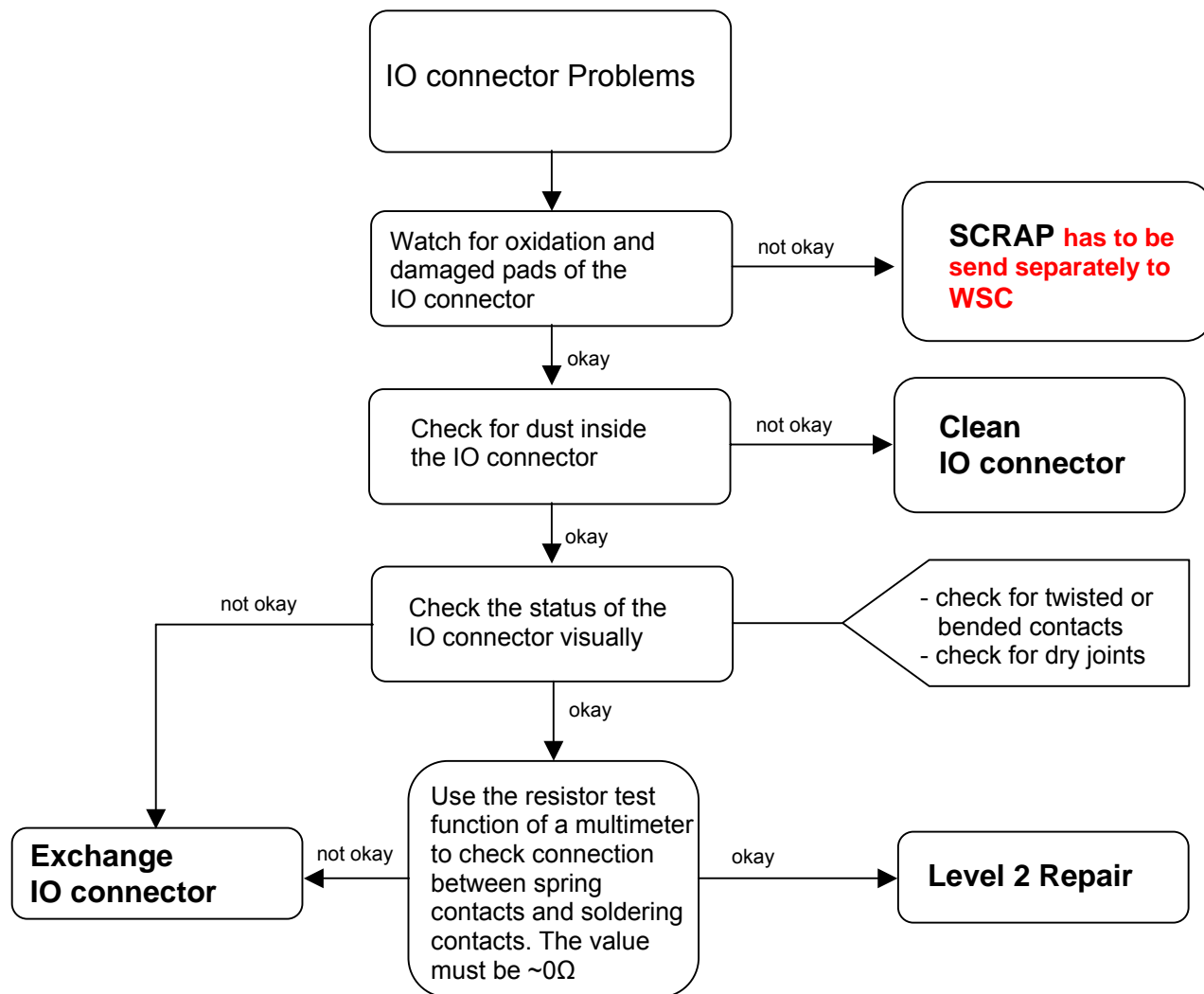
### Connector SIM Card Reader

Use soldering iron to remove defective component. Avoid excessive heat! Watch surrounding components! Resolder new component afterwards.

E-commerce order number: L50634-Z97-C406  
 E-commerce order name: CONNECTOR SIM CARD READER R65 (B)  
 Soldering temperature: ~ 360°C Tip Temp.  
 IRIS Diagnose Code: 43300 Interface/SIM Cardreader/Mechanical Damage

### 3 Connector IO Jack

Fault Symptoms	
Customer: Charging Problems Problems with external loudspeaker or microphone when using a car kit Problems with accessories connected at the IO connector	GRT: No connection to GRT Tbd.



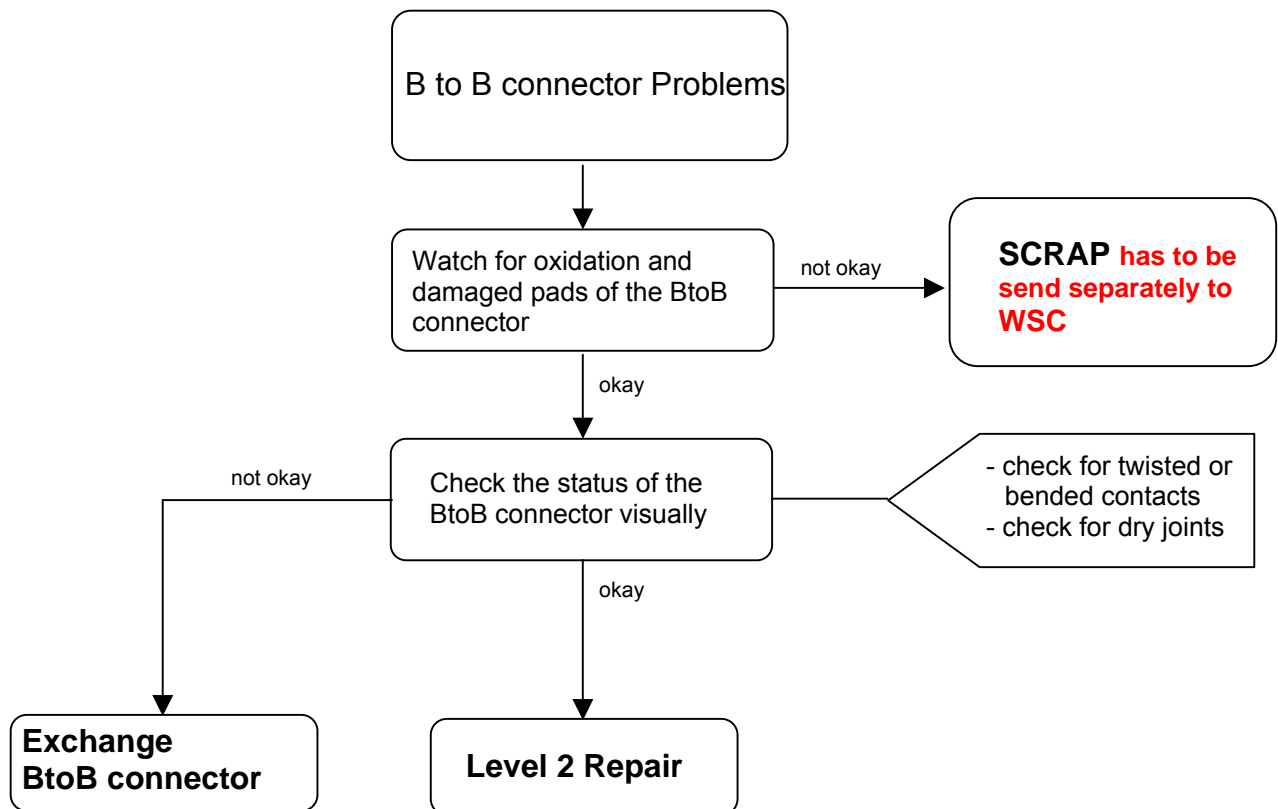
#### Connector IO Jack

Use soldering iron to remove defective component. Avoid excessive heat! Watch surrounding components! Resolder new component afterwards.

E-commerce order number: L36334-Z93-C303  
 E-commerce order name: IO-JACK SLIM 12-POL  
 Soldering temperature: ~ 360°C Tip Temp.  
 IRIS Diagnose Code: 46100 Interface/Charging Connector/Mechanical Damage  
 47300 Interface/Data Interface/Mechanical Damage  
 4B100 Interface/Headset Connector/Mechanical Damage

## 4 Connector Board to Board

Fault Symptoms	
Customer: Display problems, like missing lines or columns on the LCD or display contrast problems or illumination problems	GRT: Display problems



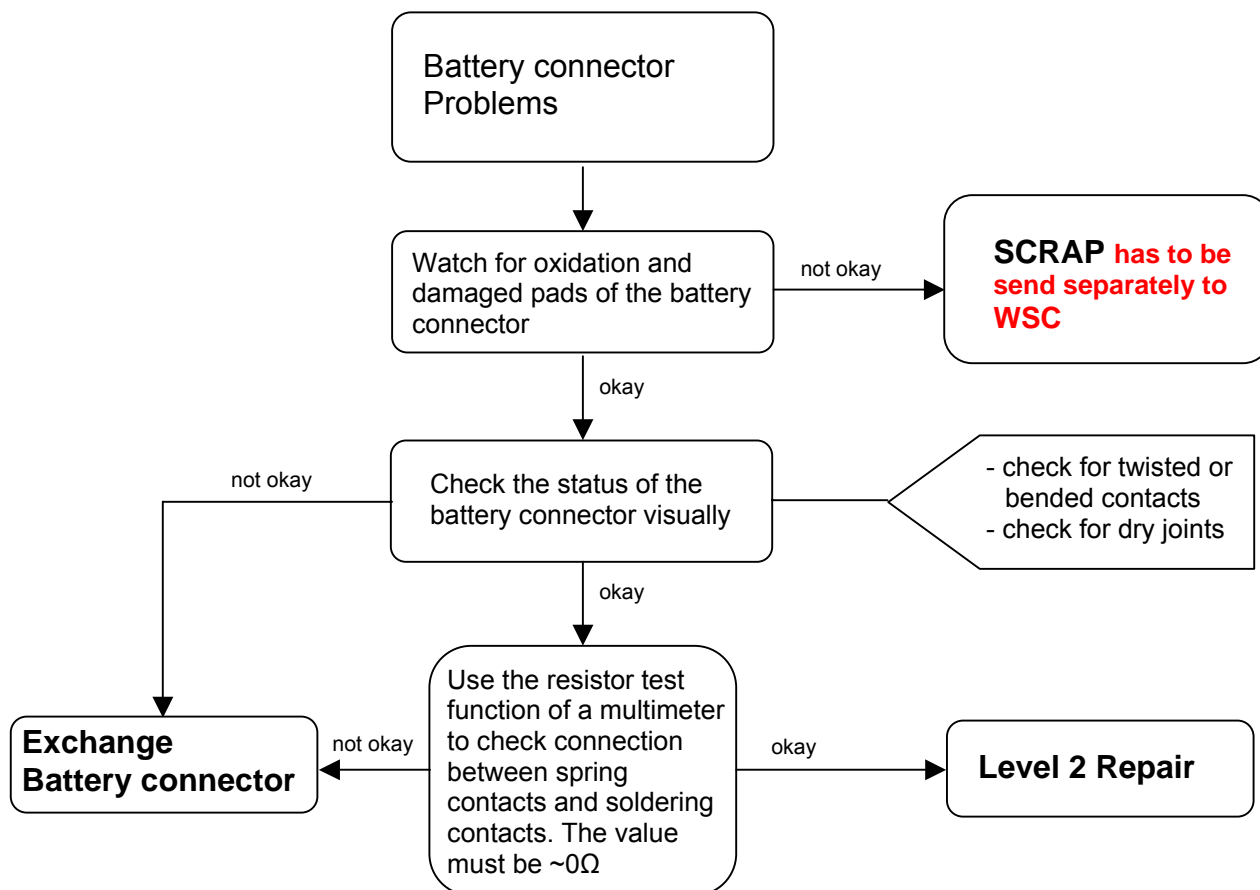
### Connector Board to Board

Use hot air blower to remove defective component. Avoid excessive heat! Watch surrounding components! Resolder new component afterwards.

E-commerce order number: L36334-Z97-C341  
E-commerce order name: CONNECTOR BOARD TO BOARD 30-POL  
Soldering temperature: ~ 360°C TIP Temp.  
IRIS Diagnose Code: 32100 Keys / Main / No Function  
32200 Keys / Main / Reduced Functionality  
36000 Keys / Illumination

## 5 Connector Battery

Fault Symptoms	
Customer: Mobile does not switch on	GRT: No connection to GRT



### Connector BATTERY

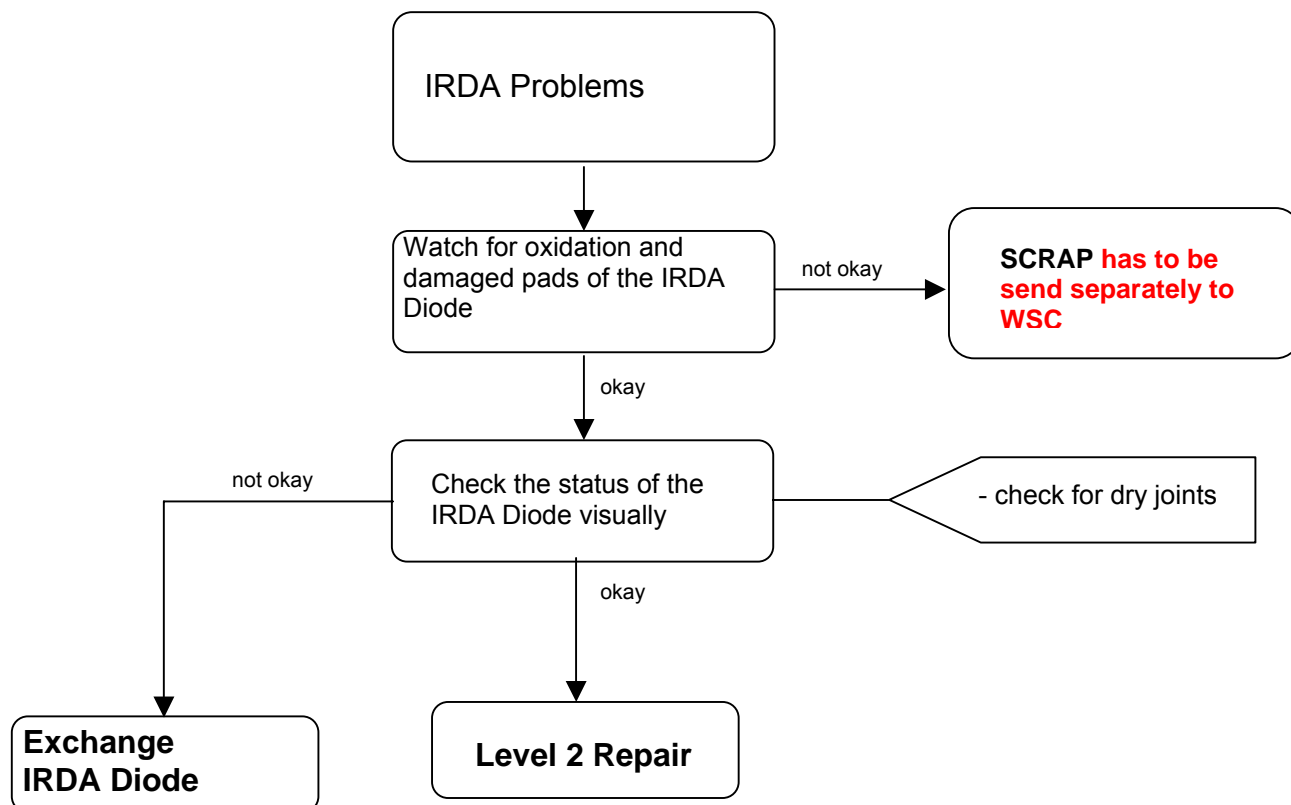
Use hot air blower to remove defective component. Avoid excessive heat! Watch surrounding components! Resolder new component afterwards.

E-commerce order number: L36334-Z97-C336  
E-commerce order name: CONNECTOR BATTERY 3-POL R65  
Soldering temperature: ~ 360°C Tip Temp.  
IRIS Diagnose Code: 13000 Battery/Mechanical Damage



## 6 IRDA

Fault Symptoms	
Customer: IRDA does not work	GRT: Tbd.



### Irda Diode

Use hot air blower to remove defective component. Avoid excessive heat! Watch surrounding components! Resolder new component afterwards.

E-commerce order number: L36197-F5008-F492  
 E-commerce order name: IRDA 115.2 KBIT  
 Soldering temperature: ~ 360°C Tip Temp.  
 IRIS Diagnose Code: 41100 Interfaces / IRDA / No Function  
 41300 Interfaces / IRDA / Mechanical Damage