

# SplashPhoto 4 User Guide



SplashData, Inc.  
270 Eakin Dr.  
Bainbridge Island, WA 98110  
[www.splashdata.com](http://www.splashdata.com)

## Table of Contents

[Introduction](#)

[Installation](#)

[Registration](#)

[Support](#)

[Browsing the Handheld Catalog](#)

- [Views](#)
- [Location](#)
- [Categories](#)

[Image View](#)

- [Full Screen View](#)
- [Image View Options Menu](#)
- [Image Details](#)
- [Pan and Zoom](#)

[Slideshow](#)

- [Slideshow Preferences](#)

[Menus](#)

- [Options](#)
- [Preferences](#)
- [Security](#)

## Introduction

SplashPhoto is a fast, easy to use image viewer for the Sony Ericsson P-Series handhelds. SplashPhoto allows users to organize images on their handhelds for individual or slideshow viewing. It is designed to provide optimal image viewing within the confines of a handheld's reduced display size and limited memory. In addition, SplashPhoto 4.0 includes desktop software that synchronizes with the handheld, for editing, optimizing, installing, organizing and cataloging images.

## Installation

Run the Installer and follow the on screen instructions. You will be required to sync your handheld to complete the installation. The installer installs the following files:

- **SplashPhoto.SIS**-- The handheld software.
- **SplashPhoto User Guide** -- This User Guide.

## Registration

When you launch SplashPhoto you will be prompted to enter a registration code or to run in Trial mode. You may run the software for 30-days in full-functioning Trial mode. The Trial software and Registered software are identical. Once the trial period ends you must purchase and enter a registration code to continue using the software. You do not need to re-install the software. Simply enter a registration code and your Trial version will be converted into a Registered version and all images will remain intact.

## Support

If you have questions about the use of SplashPhoto, there are a number of resources available:

[SplashPhoto FAQ](#) - Questions and answers for troubleshooting problems with SplashPhoto.

[Contact Support](#) - If your question is not answered in the FAQ, use this form to contact us.

[SplashData Forum](#) - Users of SplashData products discuss the software and solutions to various problems.

## Browsing the Handheld Catalog

On the handheld, launch SplashPhoto from the Applications Launcher by tapping its icon.

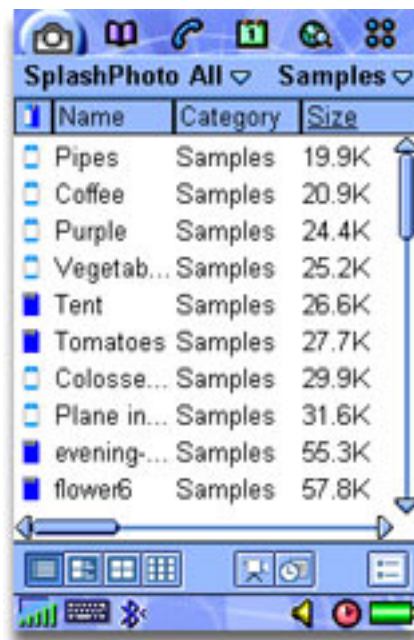
## Views

You can view your images on the handheld a number of different ways. At the bottom left of the SplashPhoto window, there are 4 view buttons available:

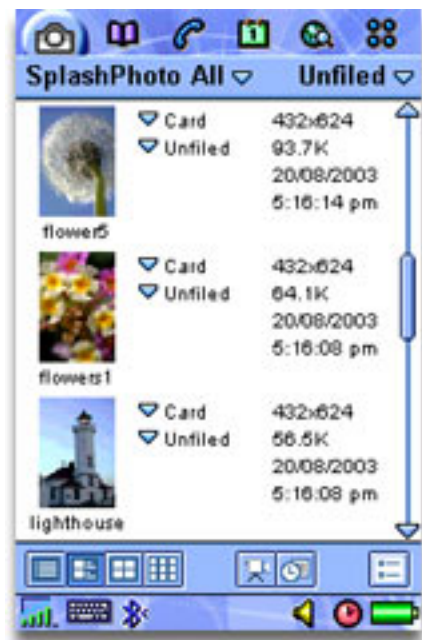


- **List View:**

Displays the Name, Category, and Size of image in a list. The columns displayed can be changed in [Preferences](#).



List View



Detail View

- **Detail View:**

Displays Thumbnail, Name, Category, Location, Dimensions, Size, and Notes. Note: The Detail View is particularly useful for changing an image's location or category.

- **Thumbnail View:**

Displays large thumbnails and the image Name.



Thumbnail View

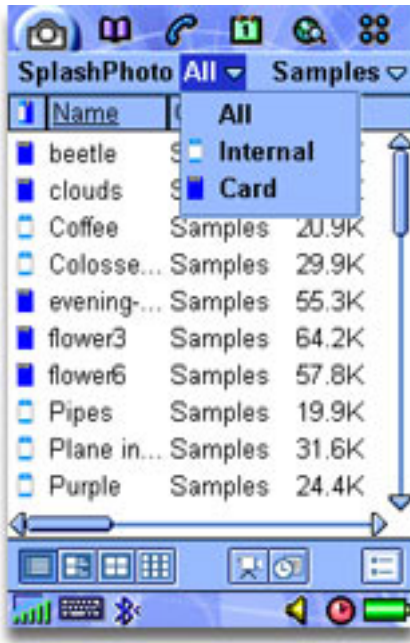


Gallery View

- **Gallery View:**

Displays small thumbnails only.

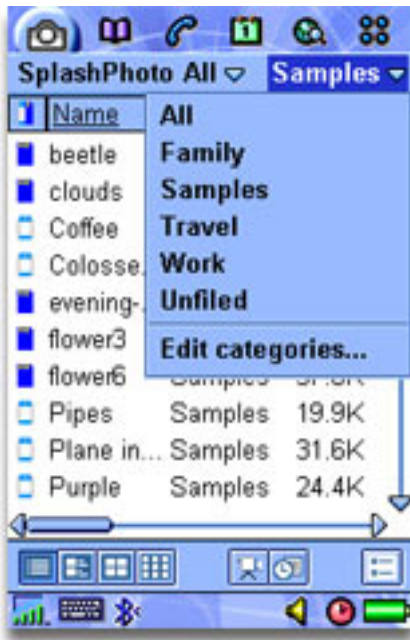
## Location



In the top middle of the application window, there is a pull-down menu from which you can filter by the Location of the images.

- **All:** Displays images in all locations.
- **Internal:** Displays images installed to the handheld's internal memory.
- **Card:** Displays images installed on the handheld's external memory card. *Note:* SplashPhoto will catalog images stored in the following locations:
  - /SplashPhoto -- this is where SplashPhoto stores its images on a memory card.
  - /image -- this is where the handheld stores images captured on the built-in camera.

## Categories



The top right pull-down allows you to filter images by Category.

You can also select Edit Categories from the pull-down list to add, delete, or rename categories.

## Image View

### Full Screen View

Scroll through images in full screen view with the jog dial on the side of the device

Tap the screen to exit full screen mode  
or  
Tap the screen and hold to bring up the Image View Options Menu

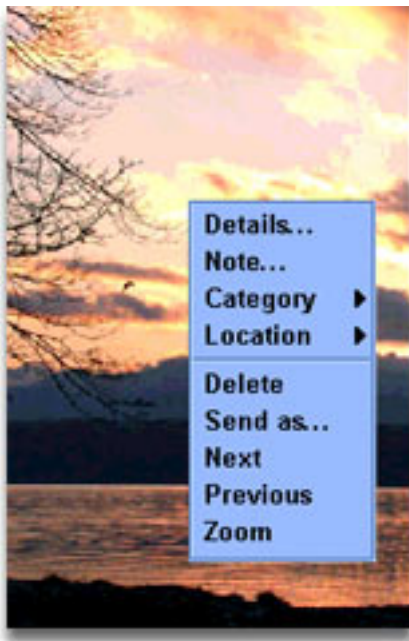


To view a full screen image, simply tap on an image from **List**, **Thumbnail**, **Gallery**, or **Detail** views. Page through the images by using the jog-dial.

Tap the screen again to exit back to one of the catalog views.

Tap and Hold to display the Options Menu.

### Image View Options Menu



There is a different menu available from Image View mode which looks like this:

**Details:** Displays the [Image Details](#) dialog.

**Note:** Opens the Note dialog where you can add or edit the note field for the image.

**Category:** Displays a list of categories to assign the image to.

**Location:** Displays a list of Locations to move the image to.

**Delete:** Deletes the image.

**Send as:** Sends the image via IR Beaming, Bluetooth, SMS, or email, if available.

**Next:** Displays the next image in the catalog.

**Previous:** Displays the previous image in the catalog.

**Zoom:** Displays the [Pan and Zoom](#) controls.



## Image Details



In the Image Details dialog you can review and modify the image attributes.

**Name** -- Use this field to rename the image.

**Category** -- You can assign each image to one of the user-definable categories.

**Location** -- You can change the location of the image.

**Res** -- Displays the resolution of the image.

**Size** -- Displays the file size of the image.

**Date** -- Displays the date the image was created.

**Private** -- Check this box to mark the image private. It will be hidden if Security settings are correctly set.

**Delete** -- Deletes the image.

**Note** -- Click the Note button to add additional information about the image in the Notes field.

## Pan & Zoom



Enter Zoom mode by tapping the screen and holding until the [Image View Options Menu](#) opens; then choose Zoom.

Entering Zoom mode displays the image at 100% of its size. If there is not enough memory available to decode the image and display it at 100%, it will be displayed as large as memory will allow.


You can Zoom by tapping the buttons on the screen (Fit, -, +, and 100%) or sliding the Zoom slider, and you can Pan the image by dragging the stylus on the image.

You can also Zoom using the jog dial on the side of the device. Up zooms out and down zooms in.

Tap Done to exit the Zoom mode and return to the browser view.

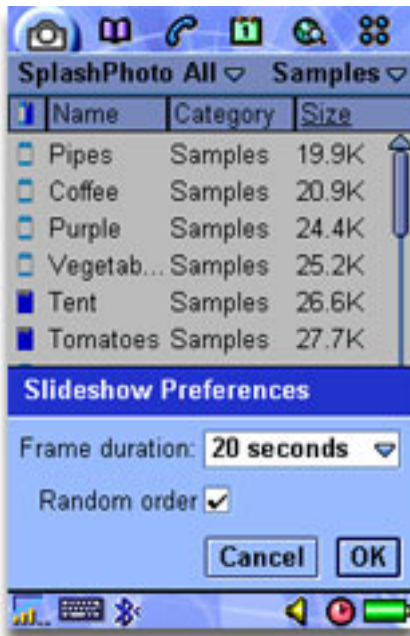
## Slideshow




Tap the slideshow icon  to start a slideshow. All of the images currently in view will be displayed in the slideshow and the slideshow will start from the currently selected image or the beginning if no image is selected. Images will be displayed according to your [Slideshow Preferences](#).

Stop the slideshow by tapping the screen.

## Slideshow Preferences



Access the Slideshow Preferences on the handheld by tapping the Slideshow Prefs button  on the toolbar.

**Duration:** Tap the pull-down menu to select the length of time you would like each image to display during a Slideshow. You can set the duration to Manual as well, and use the up/down hardware buttons to page through the images as you please.

**Show slides in random order:** Check this box to display images randomly rather than sequentially during a Slideshow.

## Menus

## Options



To display the Options Menu, return to the browser and tap the toolbar at the top of the SplashPhoto window.

**Preferences:** Opens the [Preferences](#) dialog.

**Slideshow Preferences:** Opens the [Slideshow Preferences](#) dialog.

**Slideshow :** Starts a [Slideshow](#).

**Categorize All** -- Allows you to change the category of all images that are currently in view. For example, this could be very useful to assign all the unfiled images to a category.

**Move All** -- Allows you to move all images currently in view to and from external memory cards. For example, you could move all images on internal memory to an external memory card.

**Delete All** -- Deletes all images currently in view.

**Security** -- Opens the [Security](#) dialog where you can hide or

show images marked Private.

**Refresh** -- If you are experiencing problems, select this menu command to refresh the list.

**Exit** -- Exits SplashPhoto.

## Preferences



You can access Preferences on the handheld by tapping the Preferences button on the toolbar.

**Sort By:** Tap the pull-down menu to select a different image detail to sort by.

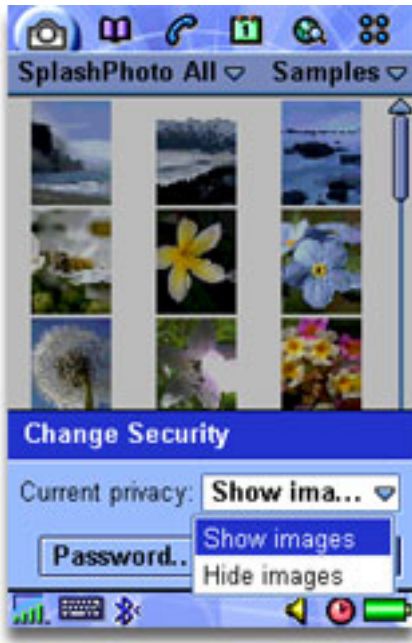
**Ascending sort:** Select the checkbox to sort in ascending order.

**List View Columns:** Check the boxes of the image details you would like to have displayed in List View.

**Auto-rotate uncropped images:** Rectangular images will be automatically rotated to best fit the screen if this box is checked.



# Security



You can mark an image as Private to hide that image from view. Mark an image private either in the [SplashPhoto Desktop](#) or in the [Image Details](#) on the handheld.

To hide images marked Private:

1. Open SplashPhoto and choose Security from the [Options](#) menu in any of the catalog views.
2. Change the Current Privacy to Hide Records and tap OK.

Note: All images marked Private will remain hidden until you change the Security setting back to Show Records.