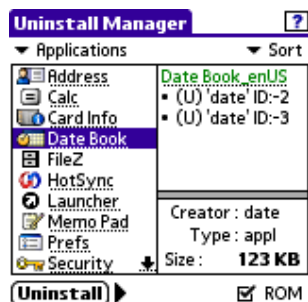




Uninstall Manager

Garbage is eating up your RAM!

Uninstall Manager saves valuable memory (RAM and Card) space while keeping your device clean and trouble-free and will make sure that newly installed applications will be completely removed when they are no longer needed.



Features:

- DOES NOT require a Hack Manager
- **The most full-featured uninstaller** available for the Palm OS
- Monitors applications for saving hidden items
- Works in the background with no user intervention
- **Monitors file installations** using the HotSync® Manager
- Cleans a68k cache/temporary files
- Groups all related items together allowing quick and easy uninstallations
- **Sandbox mode:** A carefree environment to try out new applications
- Monitors and deletes files and directories directly from the expansion card
- Option to delete directories on the expansion card when deleting applications
- Deletes RAM based items when uninstalling card based applications
- Find items monitored between a specified time period
- Completely new Graphical User Interface for easy access to advanced features
- 320 X 480 Portrait and Landscape modes
- Context-Sensitive Help
- Many more usability features
- Protect Your Assets Now: Uninstall Manager guards your RAM from garbage!

Overview

When you launch applications, from the built-in memory or the Expansion Card, they save data onto your device.

This data is used by the application when active, and normally, will be deleted when you delete the application itself.

Each and every application on your device has to have a unique Creator ID which has to be registered with Palm.

Applications, in general, use their Creator ID to tag the data they save (files, preferences and various settings) on your device.

When you choose to delete an application, the system knows which files and preferences it needs to delete by comparing them to the application's Creator ID.

However, some applications (intentionally or due to a programming error) save items under a different Creator ID than their own; these items will remain on your device, occupying your precious handheld memory for good.

When using Uninstall Manager to remove applications, they will be completely deleted, including items saved under a different Creator ID.

When trying a lot of shareware products; your device may already be cluttered with unneeded files and preferences that are taking up space and may cause problems.

To **analyze** and **get rid** of old leftovers that already inhabit your device, use **Cleanup**; to prevent your device from being a victim to future shareware products, use Uninstall Manager.

The following features are supported exclusively by Uninstall Manager and are NOT supported by Uninstall Hack

- Uninstall Manager monitors **file installations** (when using the HotSync Manager)
- **Work in Background**
- **Settings Dialog**
- **Sandbox**

Notes:

- Uninstall Manager monitors **NEW** applications, that is, Applications installed **AFTER** its installation.
- Having orphaned items on your handheld not only wastes memory space, but can also considerably slow it down
- If you are using Uninstall Hack, you have to install a **Hack Manager** and activate Uninstall Hack.
For more information: <http://www.northglide.com/uH.htm>
- **DO NOT move Uninstall Manager/Hack to the expansion card.**
Uninstall Manager MUST reside in the RAM (main memory).

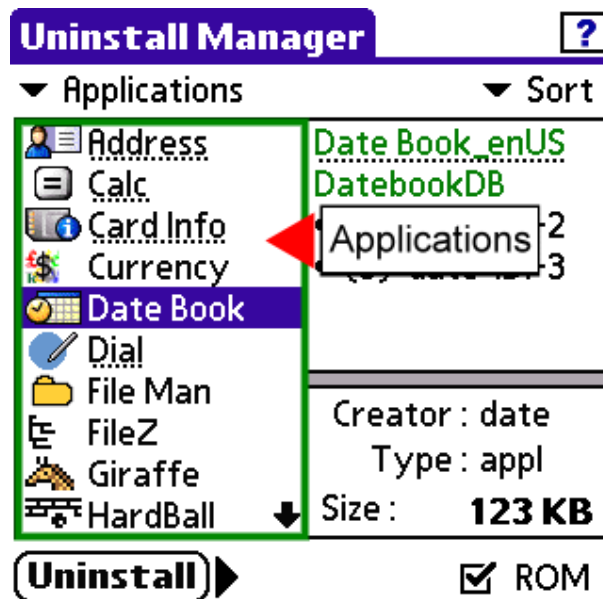
How to Use [See last page for basic definitions]

When you first launch Uninstall Manager, a list of all applications in the ***RAM** will be displayed. To list applications in the ***ROM**, select the following checkbox: ☒ ROM

To expand the list across the screen, tap the following button:

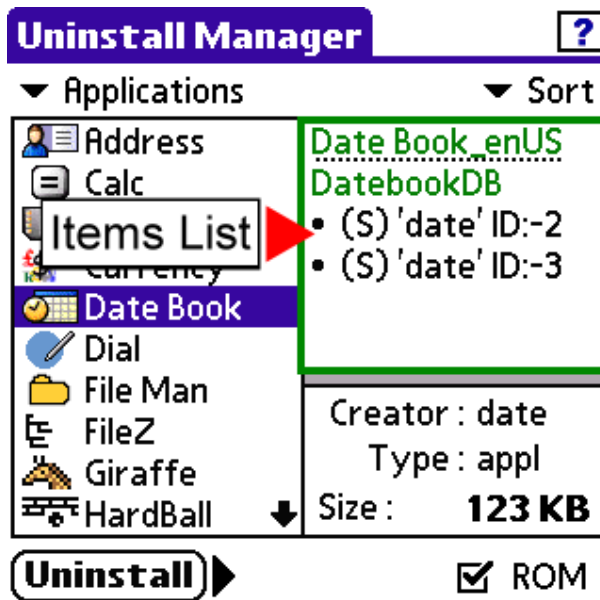


Applications List



- You can scroll the list using the **Page Up** and **Page Down** Hardware buttons, or by using **Graffiti** to write the first letter of the item you wish to jump to.
- Selecting an application from the list will display its ***associated** and ***monitored** items on the **Items List**.

Items List



What are items?

Items can be one of two types:

- **Preferences:** Relatively small pieces of data programs save that later can be easily accessed when needed (much like the Windows® registry) - Palm OS programs use preferences to quickly store and retrieve their settings at a later time. There are two Preferences Databases on your device used to store these records of data:
Saved Preferences: This database is backed-up to the Desktop computer and will be restored to your device after a **Hard Reset**.
Unsaved Preferences: This database is not backed-up and will not be restored. Although the preferences applications save are usually small in size; if you have many preferences records left by old applications (usually remnants from Trialware software that were not completely deleted) it can considerably slow down your Palm Powered handheld.
- **Database Files:** Applications, documents, pictures, music, alarms, etc.

Items List Legend / Colors

- **Green:** Database files.
- **Black:** Preferences.
 - **(S)** Saved Preferences.
 - **(U)** Unsaved Preferences

Example of preferences shown in the Items List:

- **(S) 'test' ID:0**
 This item represents a Saved Preferences record which was saved under the Creator ID of 'test' and ID of 0 (zero).

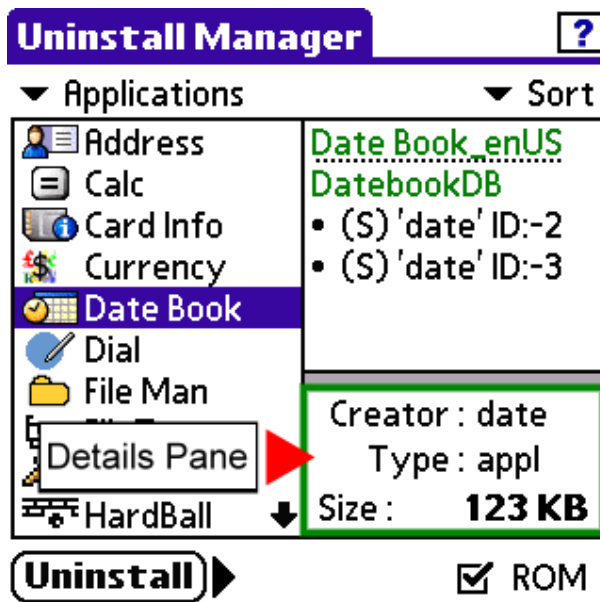
[List Legend]

Notes:

- Files in the **ROM** (read only) are underlined.
- Monitored Items in the *Applications* and *Cards* views are displayed in **Bold / Bold**.
- If the database file is an application, instead of **Green** it will be displayed in **Purple**.

Selecting (with the stylus) applications or items will display relevant information on the **Details Pane**

Details Pane



The Details Pane presents information about to the selected application or item: Its ***Creator** ID, ***Type** and **Size**.

Deleting Applications

Select the application you wish to delete and tap **Uninstall**

- Select one or all of the following options and tap Delete:



1. Delete the application file itself.
2. Delete Monitored Files: Delete all Files saved by the application under a different Creator ID than its own.
3. Delete Monitored Preferences: Delete all Preferences saved by the application under a different Creator ID than its own.
4. Delete Associated Files: Delete all Files that share the same Creator ID with the application.
5. Delete Associated Preferences: Delete all Preferences that share the same Creator ID with the application.

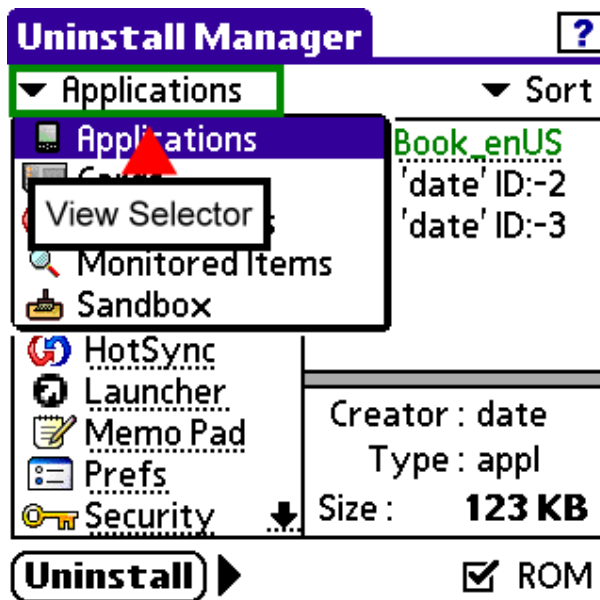
In addition to the above:

- Uninstall Manager will show a list and allow you to delete **files installed alongside the application** (in the same HotSync operation). This is particularly useful if the application you are deleting requires additional files to function (such as game levels, various database files, etc).
- Uninstall Manager will check if the application **created directories and saved files on the expansion card** allowing you to delete them.

To delete a single item

- Select the item from the Items List; tap **Uninstall**, then tap **SELECTED**

View Selector



The view discussed until now was the **Applications** view.

Available views:



Applications

View all existing applications in the RAM.

Selecting one of the applications will reveal its associated and monitored items.



Cards

Browse installed memory cards on your device and find out which files on the card are associated with RAM based files and preferences.

By using the Cards view, you can delete files and directories (must be empty) from the expansion card.

Selecting a database file (a typical Palm OS database file, as opposed to regular file such as a JPEG picture), a list of all RAM based items saved under the same Creator ID as that of the file will be displayed.

Selecting an application database (.prc) will display and let you delete its monitored and associated items in the RAM.



Installed Files

Uninstall Manager logs all files you download via the HotSync Manager to your device; may that be new programs, documents, pictures or books.

Selecting this view will display **Groups** of files organized by installation date.

You can later change the group's name to a more descriptive one (e.g. "New games").

[View Selector]



Monitored Items

View **ALL** monitored items:

- Applications that saved items under a Creator ID which is different than their own Creator ID.
- Leftovers from deleted applications.
Use the **Work in Background** option to avoid situations where applications are not completely deleted and leave leftovers.
- Files installed using the HotSync Manager.



Sandbox

View saved Sandboxes on the expansion card. You can launch a Sandbox by using this view. See below for more information about the Sandbox mode.

Notes:

- The **Uninstall** button will change its behavior according to the selected view. For more information about the different views and their items, select the **?** button and tap on the view selector.
- When deleting applications, Uninstall Manager lets you delete remaining files installed in the same HotSync operation the main application was installed. This feature is especially useful when you install applications with supporting files that do not share the application's Creator ID.
- **Cards View**

Uninstall Manager
?

▼ /PALM/Backup
▼ Sort

<div style="display: flex; flex-direction: row-reverse;"> <div style="margin-bottom: 5px;"></div> <div>..</div> </div> <div style="display: flex; flex-direction: row-reverse;"> <div style="margin-bottom: 5px;"></div> <div>More</div> </div> <div style="display: flex; flex-direction: row-reverse;"> <div style="margin-bottom: 5px;"></div> <div>Temp</div> </div> <div style="display: flex; flex-direction: row-reverse;"> <div style="margin-bottom: 5px;"></div> <div>Fingerspelling</div> </div> <div style="display: flex; flex-direction: row-reverse;"> <div style="margin-bottom: 5px;"></div> <div>InkSpotsHiRe</div> </div> <div style="display: flex; flex-direction: row-reverse;"> <div style="margin-bottom: 5px;"></div> <div style="background-color: #e0e0ff;">MirrorCircles.</div> </div> <div style="display: flex; flex-direction: row-reverse;"> <div style="margin-bottom: 5px;"></div> <div>MirrorSquare</div> </div> <div style="display: flex; flex-direction: row-reverse;"> <div style="margin-bottom: 5px;"></div> <div>MissingSquar</div> </div> <div style="display: flex; flex-direction: row-reverse;"> <div style="margin-bottom: 5px;"></div> <div>Negative.prc</div> </div> <div style="display: flex; flex-direction: row-reverse;"> <div style="margin-bottom: 5px;"></div> <div>USAFlagsSo ↓</div> </div>	<div style="color: #800080; font-weight: bold;">Dropairs</div> <div style="color: #008000; font-weight: bold;">DropairsHighScore</div> <ul style="list-style-type: none"> 'drPa' ID:1 'drPa' ID:1 <hr/> <div style="text-align: right;"> <p>Creator : drPa</p> <p>Type : BORD</p> <p>Size : 43 KB</p> </div>
--	---

Uninstall

☒ ROM

[View Selector]

View dependent buttons - These buttons are only shown in the following views:



Installed Files view:

- **Rename**
Tap this button to change the selected group's name from the default name of installation date.
- **Remove**
Tap this button to remove the selected group from the database.



Monitored Items view:

- **Remove**
Tap this button to remove the selected item from the database.





Sandbox view:

- **Launch**
Tap this button to launch the selected Sandbox.

Menu

Menu >> Main

- **Group Files**
Select files to associate with the chosen application.
Use this option to group files under a specified application to allow easier uninstallation at a later date.
-  **Find**
Find **ALL** items monitored or installed between a specified time period.
- **Export**
Export the selected item details into a Memo Pad record.
-  **Ignore List**
Select Items, Applications or Background; tap the Add button and enter the Creator ID to ignore:
 1. **Items:** Files and Preferences saved under this Creator ID will be ignored (will not be monitored and added to the database).
 2. **Applications:** ALL items saved by the application with the specified Creator ID will be ignored.
This option is especially useful to avoid monitoring applications that by definition; create or manipulate other databases with different Creator IDs (e.g. Filez, JackFlash, etc.).
 3. **Background/Work in Background:** Deactivate the Work in Background (WIB) dialog when the application with the specified Creator ID is deleted.

[Menu>>Main>>Ignore List]

This option is useful to disable the WIB dialog when launching card based applications using a shortcut or similar.
For example: When using TealAlias to launch applications from the expansion card.

- **Clear Database**

Delete all monitored application records from the database file.

Note: Monitored data will be lost.

- **Beam Uninstall Manager**

Beam the program to another handheld device running Palm OS 5.



- **Delete 'a68k' Files**

Use this option to delete old a68k cache files.

The 'a68k' database (file) is a special RAM-based database that the Palm OS creates for each application (68K) on your device. This database is created the first time the application is launched, and stays on the device until the application is deleted. Occasionally, you need to perform a soft-reset to delete a particular a68k database. Under certain circumstances an 'a68k' file can remain on your device. a68k files are small in size.

- Normally, you needn't worry about these files, but if you want the extra bytes you can use this option.
- After deleting a68k cache files, the Palm OS will recreate most of them; this is normal.
- NOT ALL a68k files can be deleted.
- Technical note: Uninstall Manager will intentionally decrement the a68k database protect count by one. To delete additional a68k files, you can use this option repeatedly (note: This will not work from v2.62 and up due to Palm Tungsten T5/Treo650 memory).
- **Activate Sandbox** (*See below for more information about the Sandbox*)
Activate the Sandbox before receiving a new application via IR or other means. Beam an application and tap on ANY hardware button to launch the Sandbox
Note: You **must only install a single application file** when using the manual Sandbox. Installing multiple files before activating the manual Sandbox is not supported.
- **Soft Reset**
Soft-Reset your device. **Note:** A soft-reset may be needed after uninstallations to remove ***Memory Features**.

Menu >> Options

-  **Toggle Icons:** Toggle application icons in the **Applications List** ON or OFF.
- **Show/Hide Hidden Apps:** Show/Hide applications that are not visible in your default Application Launcher (application databases with the hidden attribute set).
- **Default Settings:** Reset all settings to default values.
-  **Settings**



- **Enabled**
When this option is selected, Uninstall Manager will monitor applications for writing preferences and files under a different Creator ID. **It is highly recommended keeping this option checked**
- **Sandbox** *(See below for more information about the Sandbox)*
Turn the Sandbox feature ON or OFF
 - **Auto / Manual:**
Auto: The installed application will be automatically launched inside the Sandbox once the HotSync process is complete.
Manual: Running the application inside the Sandbox will require confirmation.
- **Work in Background - AVAILABLE WITH THE REGISTERED VERSION**
When the WIB option is selected, you can keep deleting applications from your default application launcher and still make sure your device stays clean. Whenever you normally delete an application, Uninstall Manager will be called and you will be given the option to view and delete any hidden items saved by the application, files installed alongside it and/or directories on the expansion card that belong to this application.

With WIB enabled, you don't have to use Uninstall Manager itself to completely delete applications; you can keep deleting applications from your default application launcher (ZLauncher, Launcher-X, SilverScreen, etc.)

Sandbox

Keep applications away from your device before you decide to keep them!

When using the Sandbox mode to install a new application, you can quickly evaluate and completely remove it if you choose to.

When you download a NEW program via the HotSync manager, Uninstall Manager will show a list of all files installed alongside the application; when you choose Start, the program will be launched.

When you finish evaluating the program, tap the 'Home' icon; Uninstall Manager will list files installed alongside the program, as well as files created when it was running.

You will then be able to completely uninstall the program or keep it on your device.

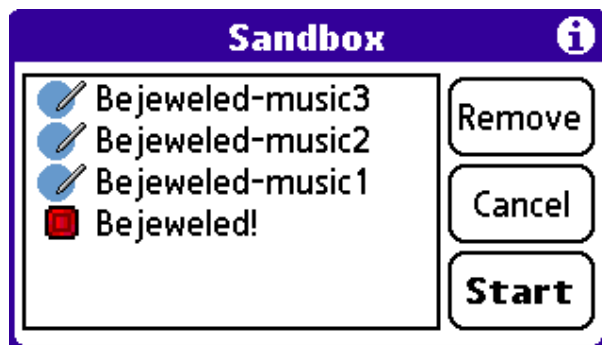
Sandbox Notes:

- When deleting a program from within the Sandbox dialog; in addition to its associated files, ALL preferences/settings saved by the application will be deleted.
- The Sandbox will not work when upgrading to a newer version of an already installed application.
- You should install a SINGLE application at a time when using the Sandbox.

You can install several files at once, but should not install more than one application when you want to use the Sandbox mode.

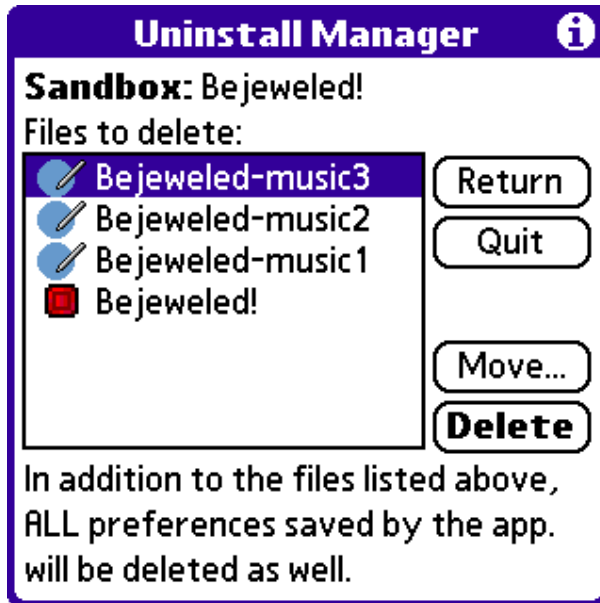
Sandbox Dialogs

After installing new applications, the following dialog will appear allowing you to **Start**, **Remove** certain files or **Cancel** the Sandbox:



[Sandbox Dialogs]


This dialog will appear after you exit from an application that was running inside a Sandbox:



- **Return:** Keep using the Sandbox and return to the application. Next time you exit the application, you will return to this dialog.
- **Quit:** Exit the Sandbox mode and return to the application. Choose **Quit** if you want to keep the application on your device.
- **Move:** Move files from the Sandbox to the expansion card; you can later relaunch the Sandbox by using Uninstall Manager's Sandbox View.
- **Delete:** Delete ALL Files and Preferences saved by the application, as well as any additional files that might have been installed alongside it.

Definitions

- **RAM:** The RAM is your handheld's Main Memory - Where all your programs store their settings and files. When you launch applications that are located in the expansion card, the application will first be copied into the RAM and when you exit from it (back to your default launcher) it will be deleted from the RAM, leaving its files and settings behind for the next time it is launched.
- **ROM:** The ROM contains pre-installed software such as the Address Book, Date Book, Calculator, To Do, Memo Pad and other common software. Applications in the ROM (Read Only Memory) **CANNOT BE DELETED**.
- **Associated Items:** Items on the RAM that share the same Creator ID with their parent application.
- **Monitored Items:** Items saved by the selected application using a Creator ID different than its own.
- **Creator ID:** All items that are saved onto your device include a reference to the application that created them: A Creator ID.
Each application has to have a unique Creator ID. When you choose to delete an application; the Palm OS deletes all items that share the Creator ID with this application. Some applications, intentionally or due to a programming error, save items which are not associated with their parent application (have a different Creator ID); these items will not be deleted when you delete the application itself. The Creator ID is a **four-byte** value.
- **Memory Features:** A Memory Feature is a special block of memory that is used by the application until it has been explicitly unregistered (deleted) by the application, or has been deleted by the OS after a soft-reset.
- **Type:** A four-byte value that represents the database file's type. For instance, if a database file is launchable (can be launched by the Application Launcher), its Type attribute will be 'appl'. On the Details Pane Preferences Resources will have 'pref' as the Type attribute.

For further help, tap the  button at the upper right corner of the screen and select a command or a menu item for more information.



© 2005 Northglide™ All Rights Reserved / www.northglide.com