

## SF65 Software Download Tool



Release	Date	Department	Notes to change
1.0	04.01.2005	COM MD CC GRM T	New document
1.1	27.01.2005	COM MD CC GRM T	Parallel Updates added

## Table Of Content

1.	Hardware Requirements .....	3
2.	Software Requirements .....	3
3.	Installation of the Siemens USB cable .....	3
4.	GSM Strings .....	4
5.	Software Architecture .....	5
6.	Siemens Download Tool .....	6
a.	Com Port : .....	7
b.	Baud rate : .....	7
c.	UART : .....	7
d.	Select a project : .....	7
e.	Download type : .....	7
f.	Select a file : .....	7
g.	Select a package : .....	8
7.	Software Update Description .....	9
8.	Language Package Download .....	12
9.	Parallel Updates.....	14

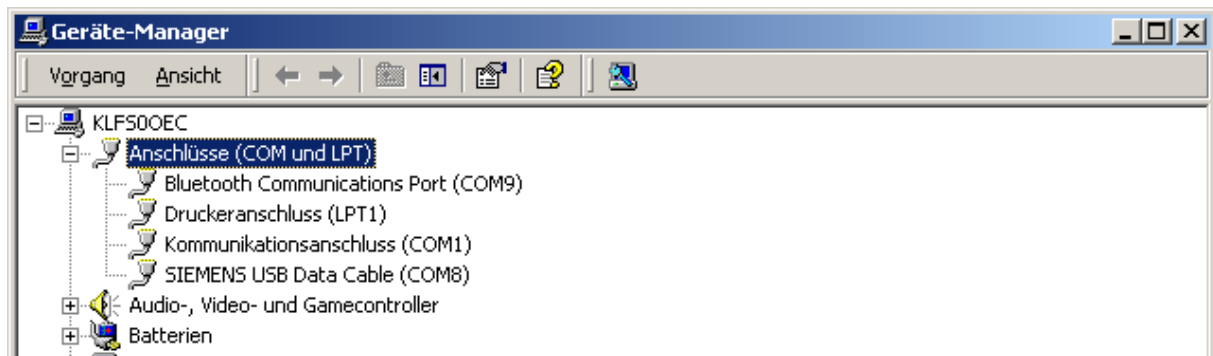
## 1. Hardware Requirements

- Data Cable USB DCA-510 ( Serial – USB) L36880-N5601-A111
- PC with at least Pentium III, 800 MHz

## 2. Software Requirements

- Driver for Siemens USB Data Cable DCA-510
- Siemens Software Download V1.25
- Supported OS : Win98,2K,NT,XP

## 3. Installation of the Siemens USB cable



## 4. GSM Strings

There is a possibility to get some mobile informations ( Software, Configuration, Language ), network features .

✓ **\*#06#**

Displays the IMEI number of the mobile phone

Pressing **About** will show the following informations :

***PN*** : 3033 41 0004 41 ( Production Number )

***CN*** : 5659 2004 41 (Configuration Number)

***Soft*** : 0234000**309**040000 ( **309 is the SW version** )

***Language*** : LG\_EMEA\_NORT 19-0

***Configuration*** : SF65\$Retail\$Emea 15

Pressing **About** again , will display CCMonitor menu

✓ **\*#over\*#** or **\*#6837\*#**

Displays project code 02340003

Displays pack\_resid : LG\_EMEA\_NORT

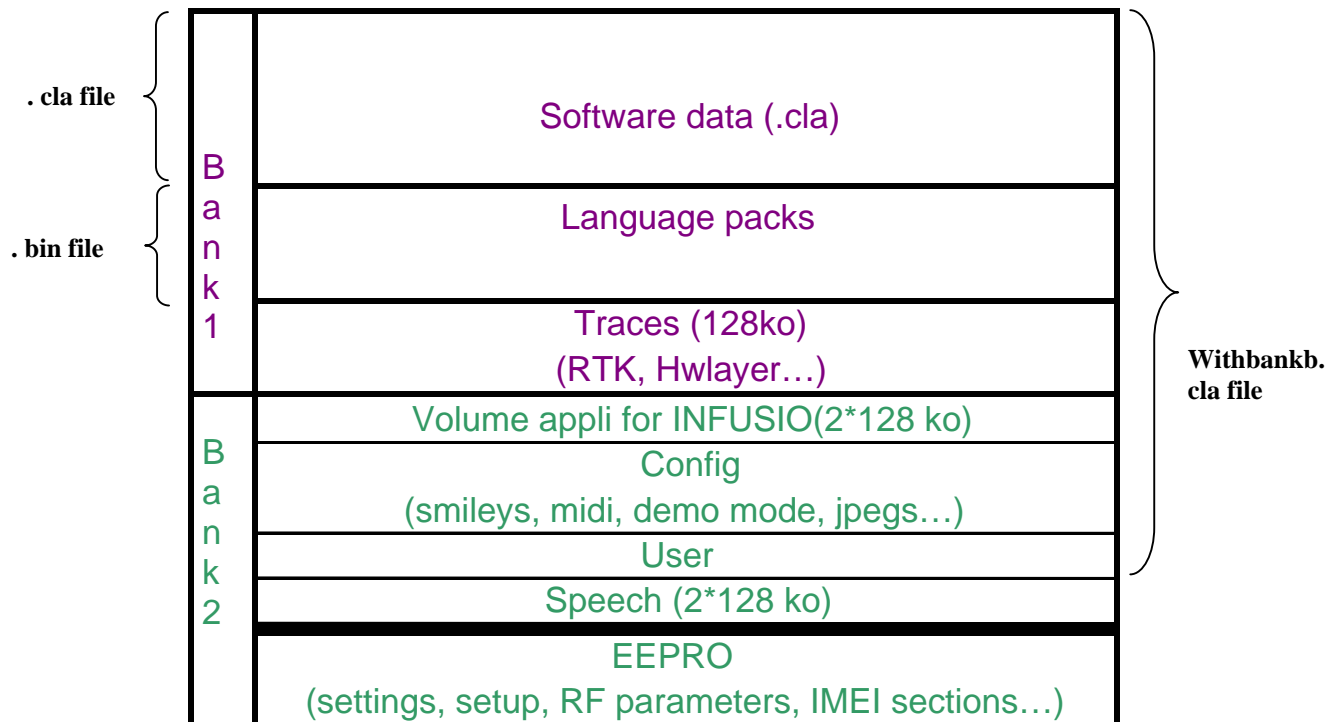
✓ **\*#cell\*#** or **\*#2355\*#**

Displays some network features (MCC,MNC, LAC.....)

✓ **\*#isda\*#** or **\*#4732\*#**

Displays some downloading informations

## 5. Software Architecture



There are four types of files which can be downloaded with Download Tool :

- The core SW (.cla file)
- The configuration and the FFS files + the core SW.( withBankb.cla file) :  
▲ !!!!!!! Important :Erase Customer data
- The language package (.bin file)

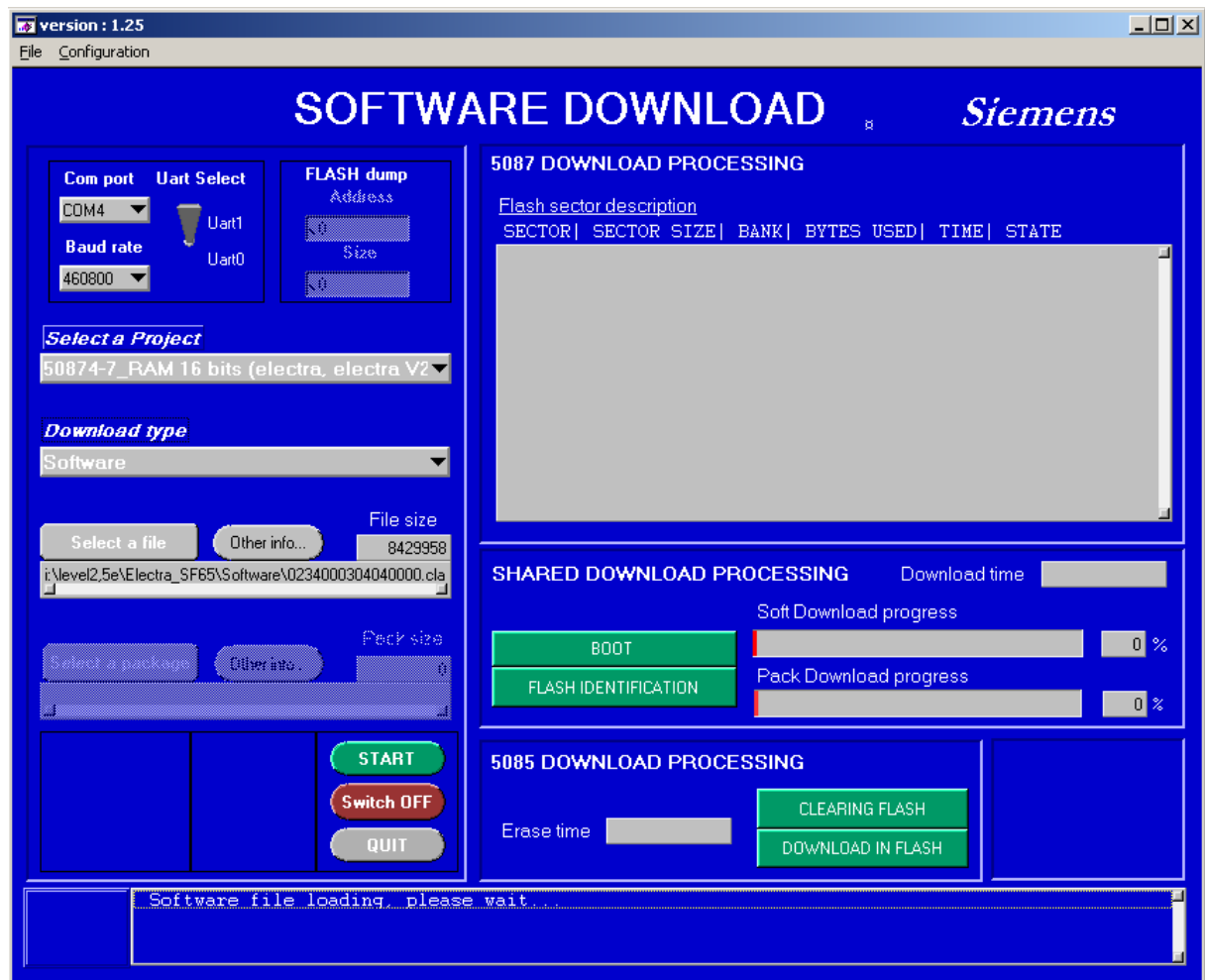
### ◆ Bank 1

- ✓ 53 \* 128 ko SW (.cla)
  - ✓ 11\*128 ko Pack
- } ~ 8 Mbytes

◆ Bank 2

	Section		
	Config	User	EPROM
Mobile			
SF65	2688ko used (7 * 384ko)	20736 Ko used (54*384 ko)	128 ko used (4*32 ko)

## 6. Siemens Download Tool



**a. Com Port :**

Open the Remote Device Panel to select the COM number assigned to Siemens USB data cable ( see above)

**b. Baud rate :**

A baud rate up to 460800 kbps is supported . ( No update possible with a rate higher than this value !)

**c. UART :**

Switch UART to Uart1

**Universal Asynchronous Receiver/Transmitter** : The microchip with programming that controls a computer's interface to its attached serial devices.

It provides the computer with the DTE (Data Terminal Equipment) interface so that can talk to and exchange data with serial devices.

**d. Select a project :**

Keep the default selected option : 50874-7\_RAM 16 bits (electra,electra V2)

**e. Download type :**

- Choose the option

Software : if you want to update the core software or core software and configuration files .

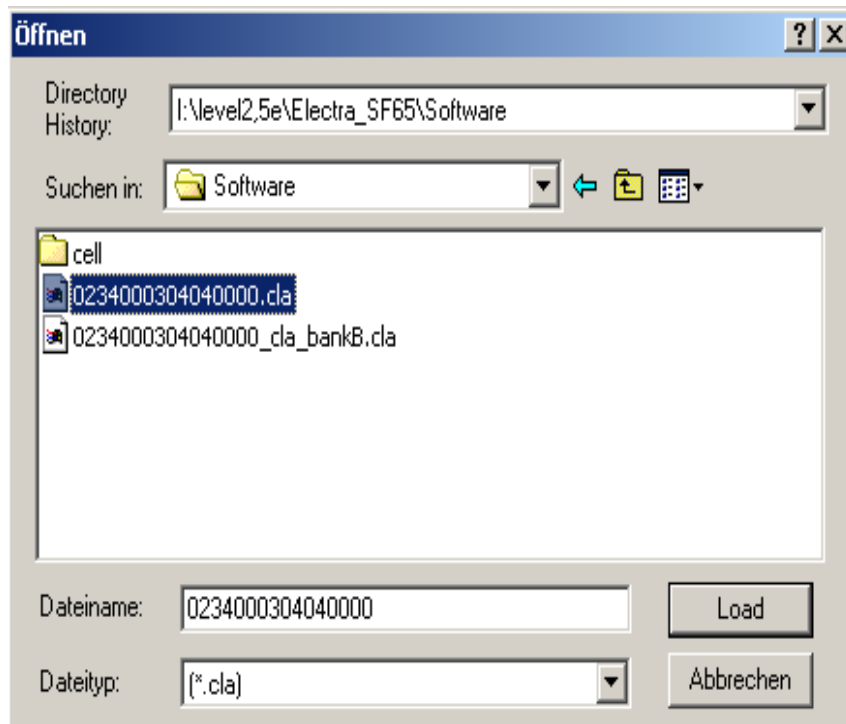
Package : if you want to download a language package

**f. Select a file :**

☞ This item is freezed when the Download type **Package** is selected.

- Click the select file button .
- Load the required file :
  - If you want to update only the core software, then you should select the file with .cla extension ( see below)

- If you want to make an update for the core SW, configuration files and FFS, then you should select the file 0234000304040000\_cla\_ **withbankB**.cla  
(!!!!Customer data will be erased , if you choose to download this file)
- Click Load



Loading the file will take few seconds, the status bar of the main panel will show a message :  
[Software file loading, please wait...](#)

**g. Select a package :**

☞ This item is freezed when the Download type **Software** is selected.

- Click the select a package button .
- Load the required language group : with .bin extension
- Click Load



## 7. Software Update Description

- ◆ **The mobile has to be always switched off**
- ◆ **The Siemens USB Data Cable should not be plugged to the mobile. (only after pressing the start button)**

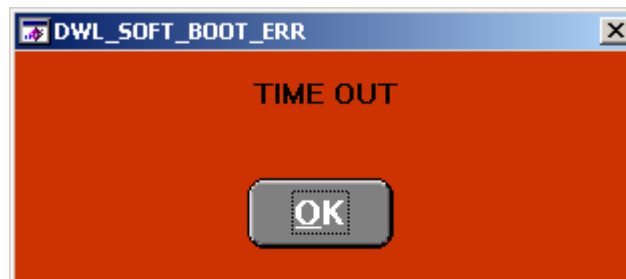
Once the above described setting is done, press The green button “ START” to start update procedure.

In case of right setting , an orange message box asking to **turn the mobile on** will pop up  
In this case , plug the Siemens USB Data Cable into the mobile phone ( the mobile phone should be switched off)

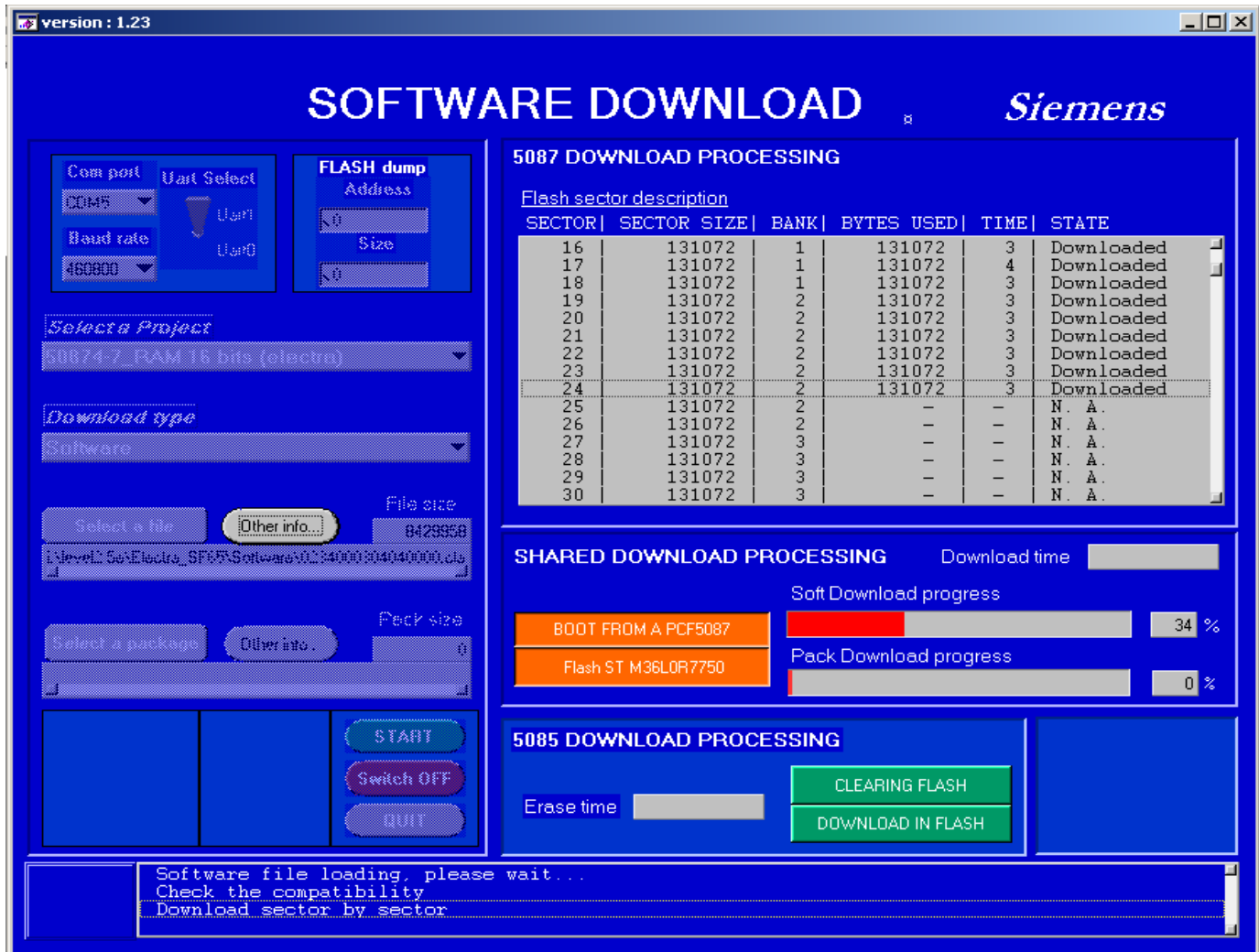
If the setting is wrong :

- Wrong Com Port number is selected
- Uart0 is selected
- A defect cable is used

Or , when the cable is not plugged in time , the following window will appear:



With a successful setting , plugging the cable into the device will start immediately the download process :

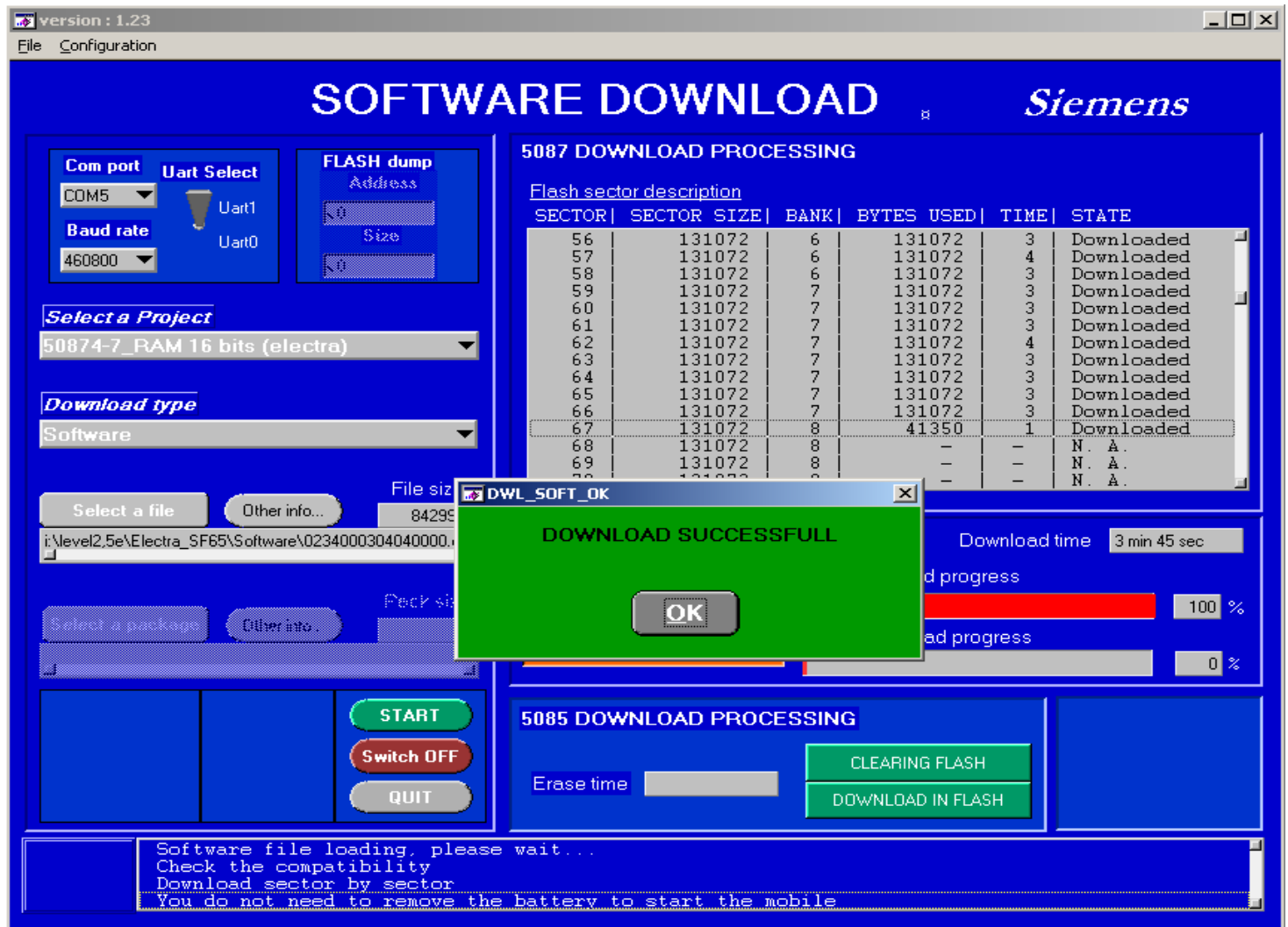


The gray rectangle on the top right of the main panel , will display, in real time, the download process evolution sector by sector .

A red progress bar will show the SW download progress .

Once the download stage is finished a green message box will pop up indicating the end of the download.

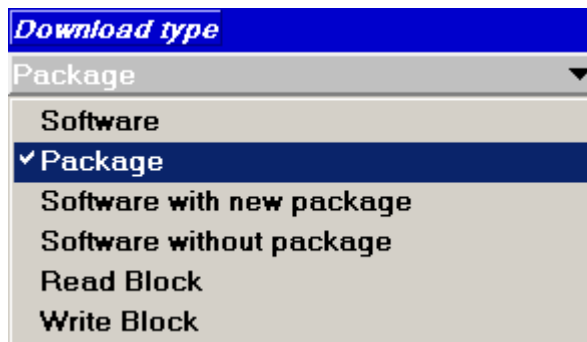
- The total download time will be displayed under the gray rectangle.
- In the status bar an indication to remove the battery and insert it again in order to switch on the phone is displayed



## 8. Language Package Download

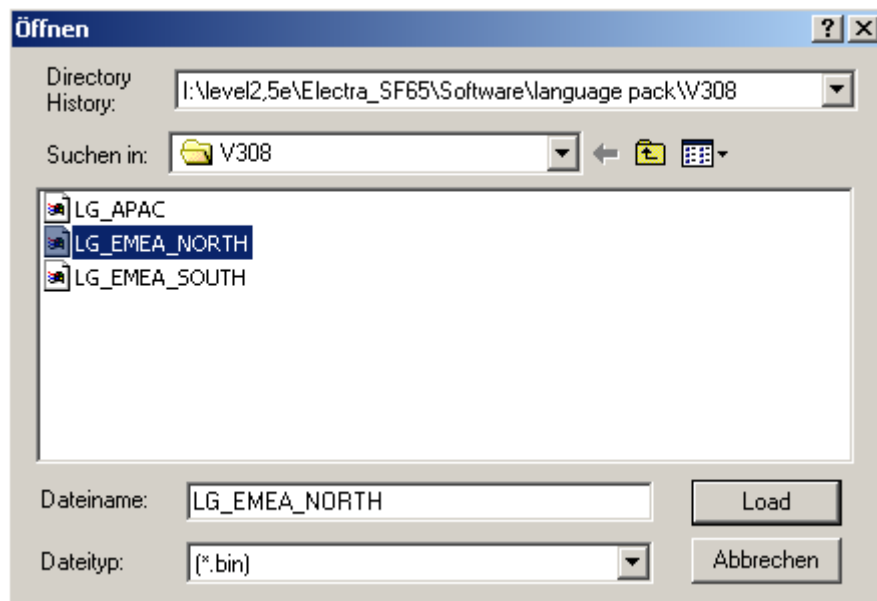
In order to download language package to the mobile phone , the same configuration of the Download Tool is used as for downloading the core SW.

The only difference is the download type which should be set to : **Package** ( see picture below)



After selecting the Package option the *Select a file* item will be freezed ( this item is used when Software is selected as a download type) , and the *Select a package* item ( which was previously freezed ) will be highlighted.

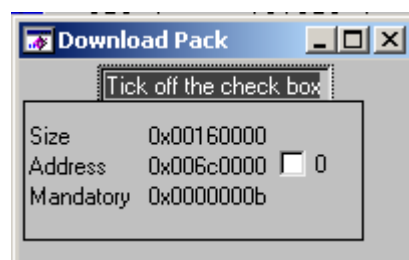
Select the language package you want to download to the mobile ( .bin file )



Once the above described setting is done, press The green button “ START” to start package download.

In case of right setting , an orange message box asking to **turn the mobile on** will pop up. In this case , plug the Siemens USB Data Cable into the mobile phone ( the mobile phone should be switched off)

The following small window will appear :



Follow the instruction message and tick off the check box .

Once the package download is accomplished ,a green message box will indicate the success of the download.

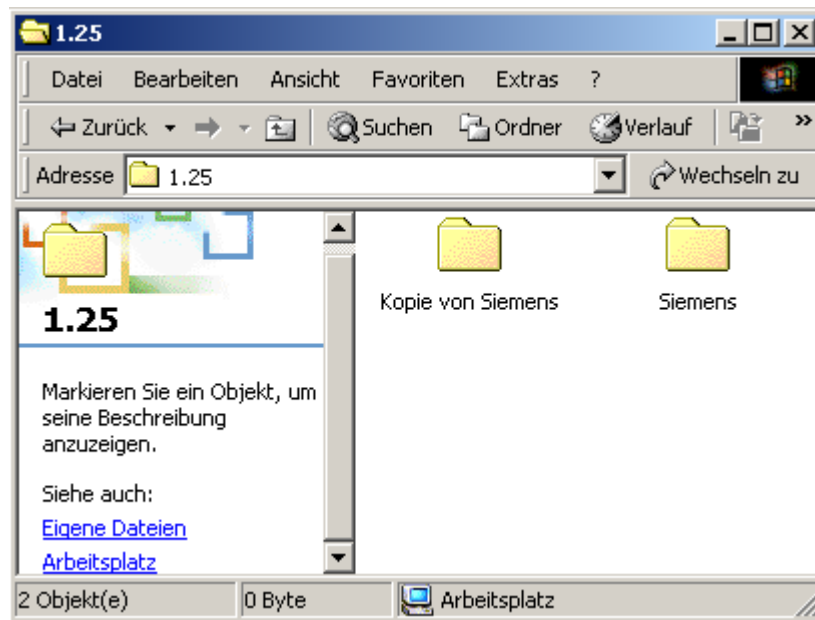
Remove the battery and insert it , if you want to switch on the phone again.

## 9. Parallel Updates

There is a possibility to do several SW download with the Siemens Download Tool (Depending on the available USB ports).

To do so follow the instructions:

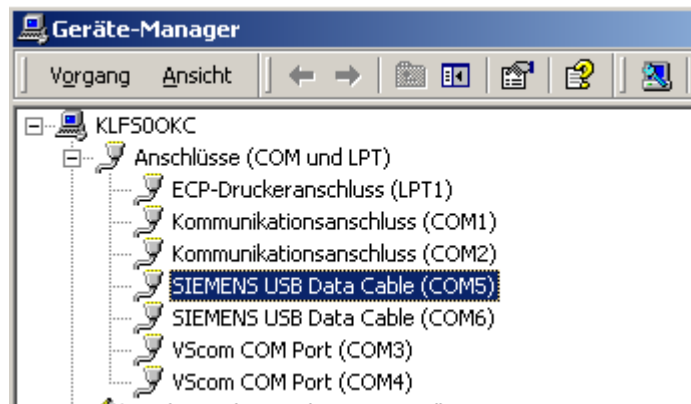
1. Open the folder x:/download/1.25 : you will find a folder called Siemens
2. Make a copy of this folder (Siemens) and paste it.



3. Open the copied folder (Copy of Siemens) and run the *dwlDev* file.



4. Check the assigned COM number to each connected Siemens USB cable.



5. Do the same configuration for each opened panel, as described in the beginning of this manual.

