

# Service Repair Documentation

## Level 2.5 - SL65



Release	Date	Department	Notes to change
1.0	04.08.2004	ICM MP CCQ GRM T	New document

## Introduction

This Service Repair Documentation is intended to carry out repairs on Siemens repair level 2.5. The described failures shall be repaired in Siemens authorized local workshops only.

All repairs have to be carried out in an ESD protected environment and with ESD protected equipment/tools. For all activities the international ESD regulations have to be considered.

Assembling/disassembling has to be done according to the latest SL65 Level 2 repair documentation. It has to be ensured that every repaired mobile Phone is checked according to the latest released General Test Instruction document (both documents are available in the Technical Support section of the C-market).

Check at least weekly C-market for updates and consider all SL65 related Customer Care Information

SL65 Partnumber on IMEI label:                S30880-S7700-#xxx

, while # may be any letter (A-Z) and xxx may be any number from 100, 101, 102....

If you have any questions regarding the repair procedures or technical questions spare not hesitate to contact our technical support team in Kamp-Lintfort, Germany:

Tel.: +49 2842 95 4666  
Fax: +49 2842 95 4302  
e-mail: [st-support@klf.siemens.de](mailto:st-support@klf.siemens.de)

**Table of Content**

1 SL65 board layout .....4

2 Connector SIM Card Reader .....5

3 Connector IO Jack.....6

4 Connector Battery .....7

5 Connector BOARD TO BOARD .....8

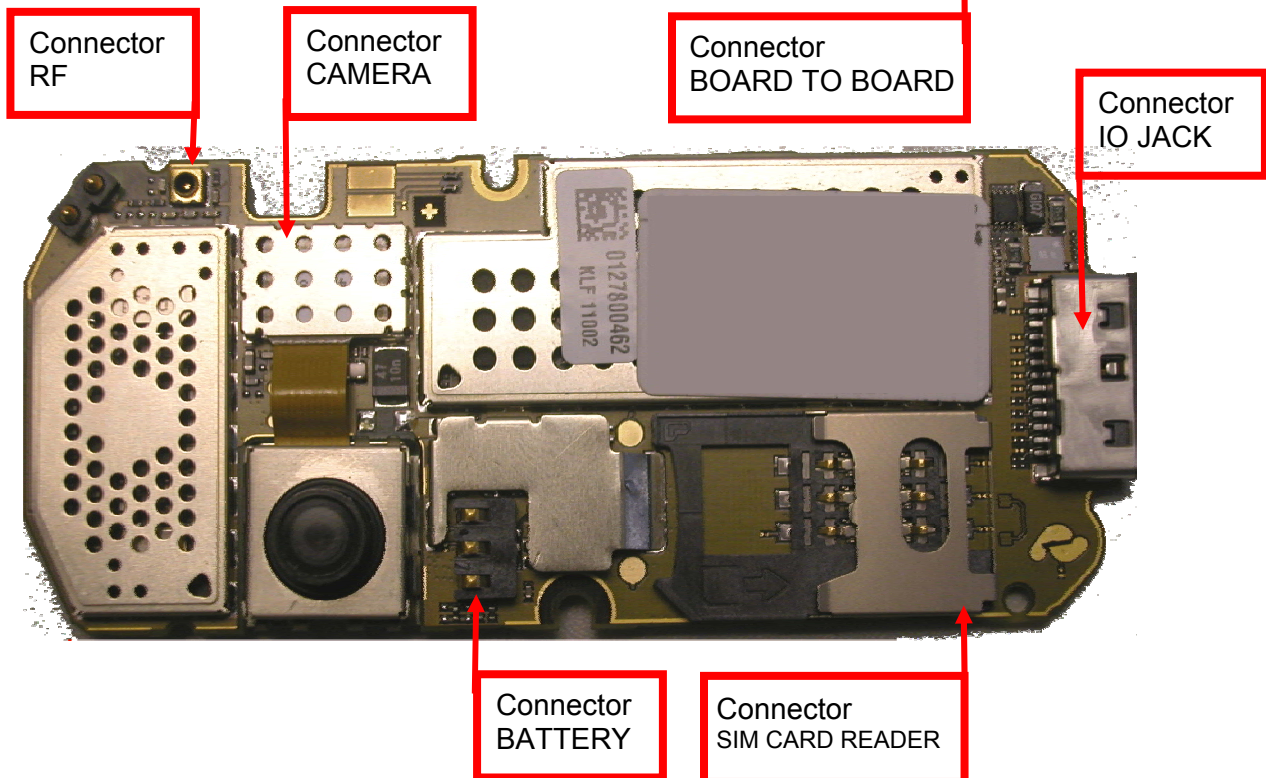
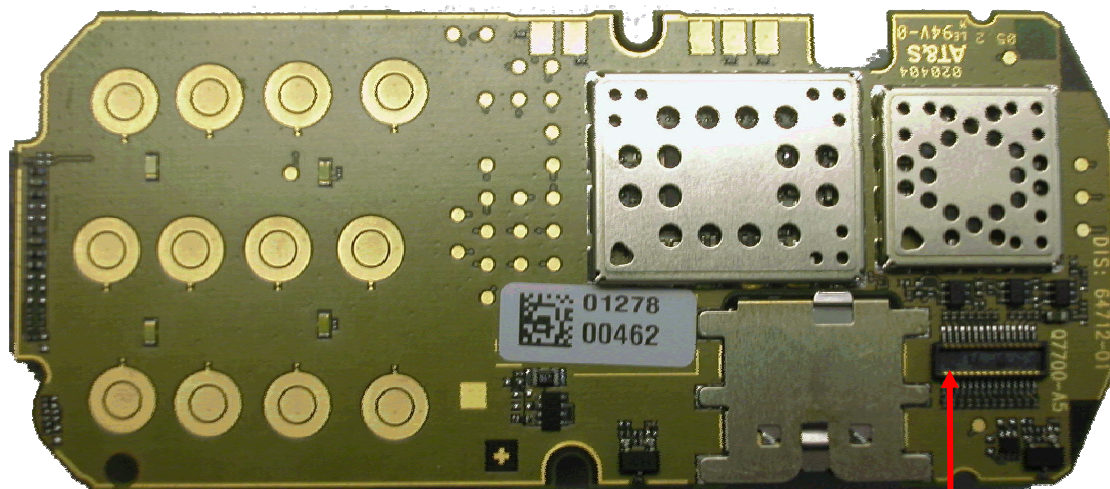
6 Connector RF Internal Antenna.....9

7 Connector Camera .....10

## 1 SL65 board layout

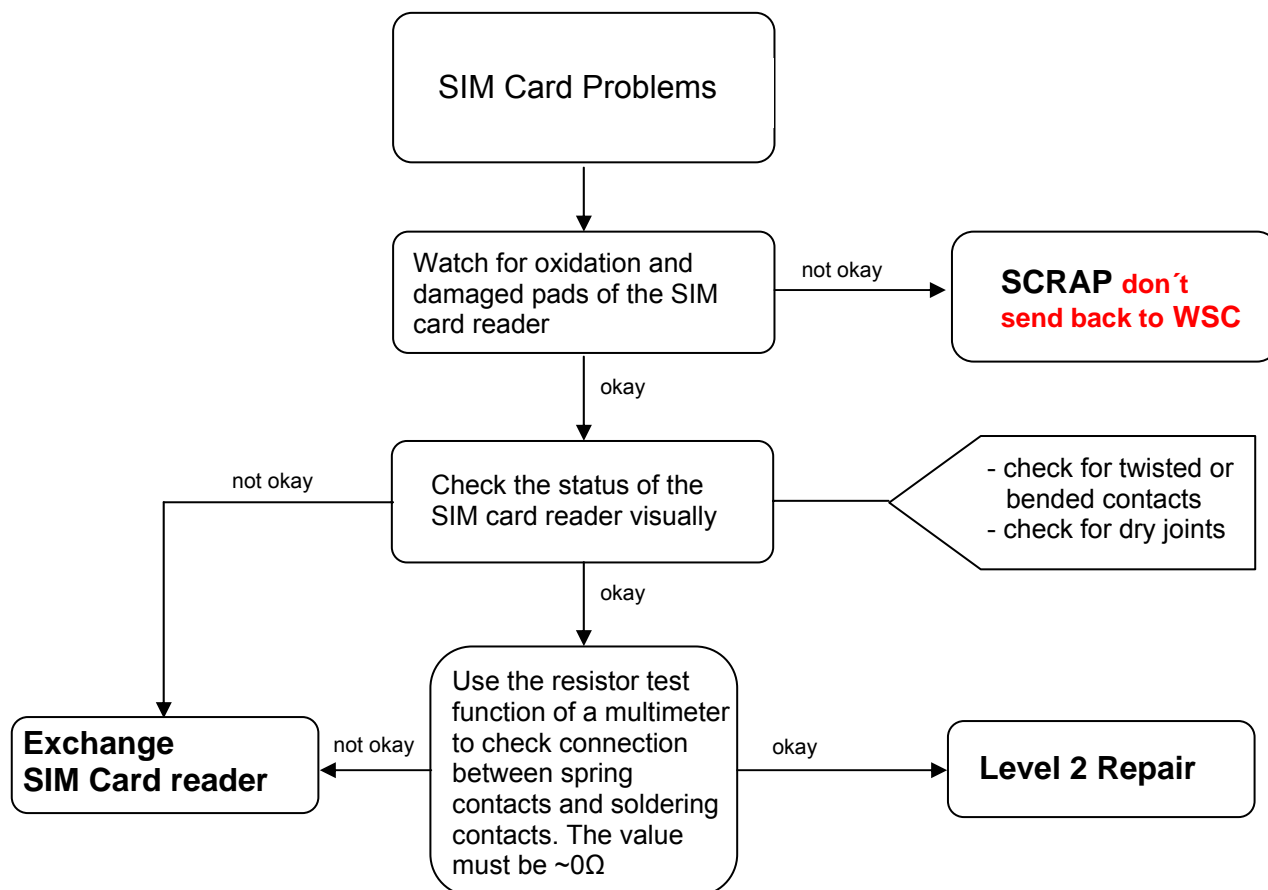
Jigs, Tools and Working materials for all described repairs:

- hot air blower
- soldering gun
- tweezers
- flux
- solder



## 2 Connector SIM Card Reader

Fault Symptoms	
Customer: Handset does not accept SIM card	GRT: SIM Card Problems



### Connector SIM Card Reader

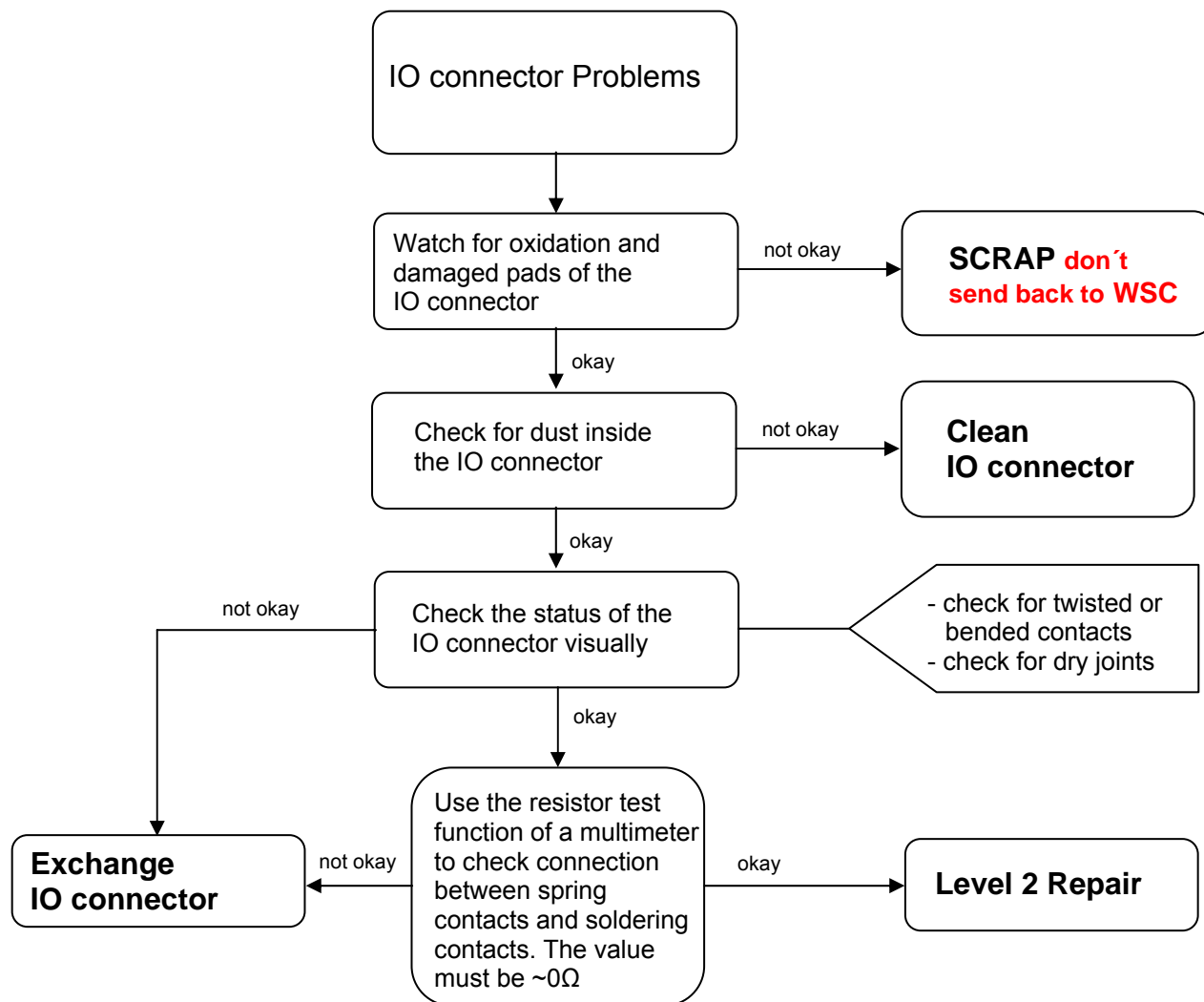
Use soldering iron to remove defective component. Avoid excessive heat! Watch surrounding components! Resolder new component afterwards.

E-commerce order number: L36334-Z97-C335  
Soldering temperature: 240 - 255°C  
IRIS Diagnose Code: 43300 Interface/SIM Cardreader/Mechanical Damage



### 3 Connector IO Jack

Fault Symptoms	
Customer: Charging Problems Problems with external loudspeaker or microphone when using a car kit Problems with accessories connected at the IO connector	GRT: No connection to GRT Tbd.



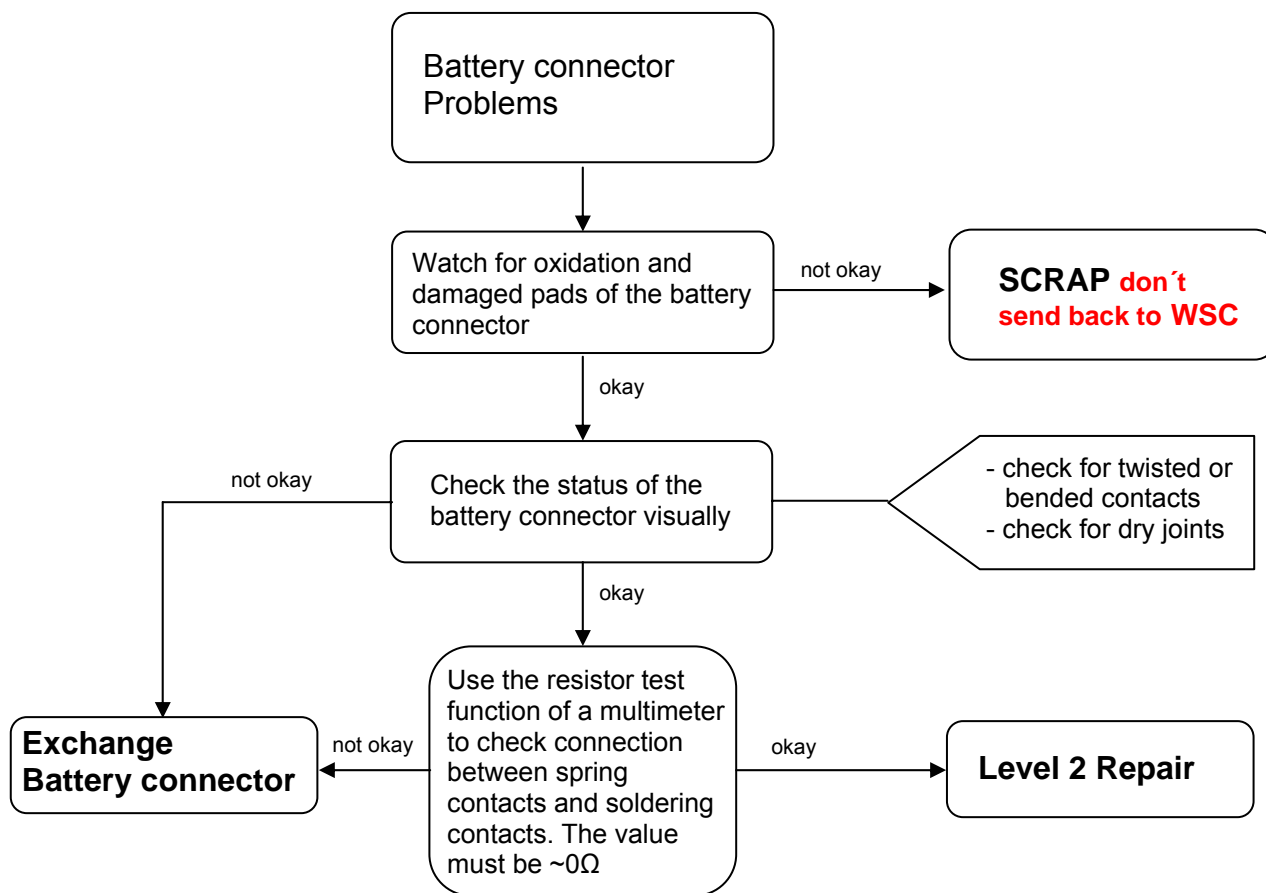
#### Connector IO Jack

Use soldering iron to remove defective component. Avoid excessive heat! Watch surrounding components!  
Resolder new component afterwards.

E-commerce order number: L36334-Z93-C303  
Soldering temperature: 240 - 255°C  
IRIS Diagnose Code: 46100 Interface/Charging Connector/Mechanical Damage  
47300 Interface/Data Interface/Mechanical Damage  
4B100 Interface/Headset Connector/Mechanical Damage

## 4 Connector Battery

Fault Symptoms	
Customer: Mobile does not switch on	GRT: No connection to GRT



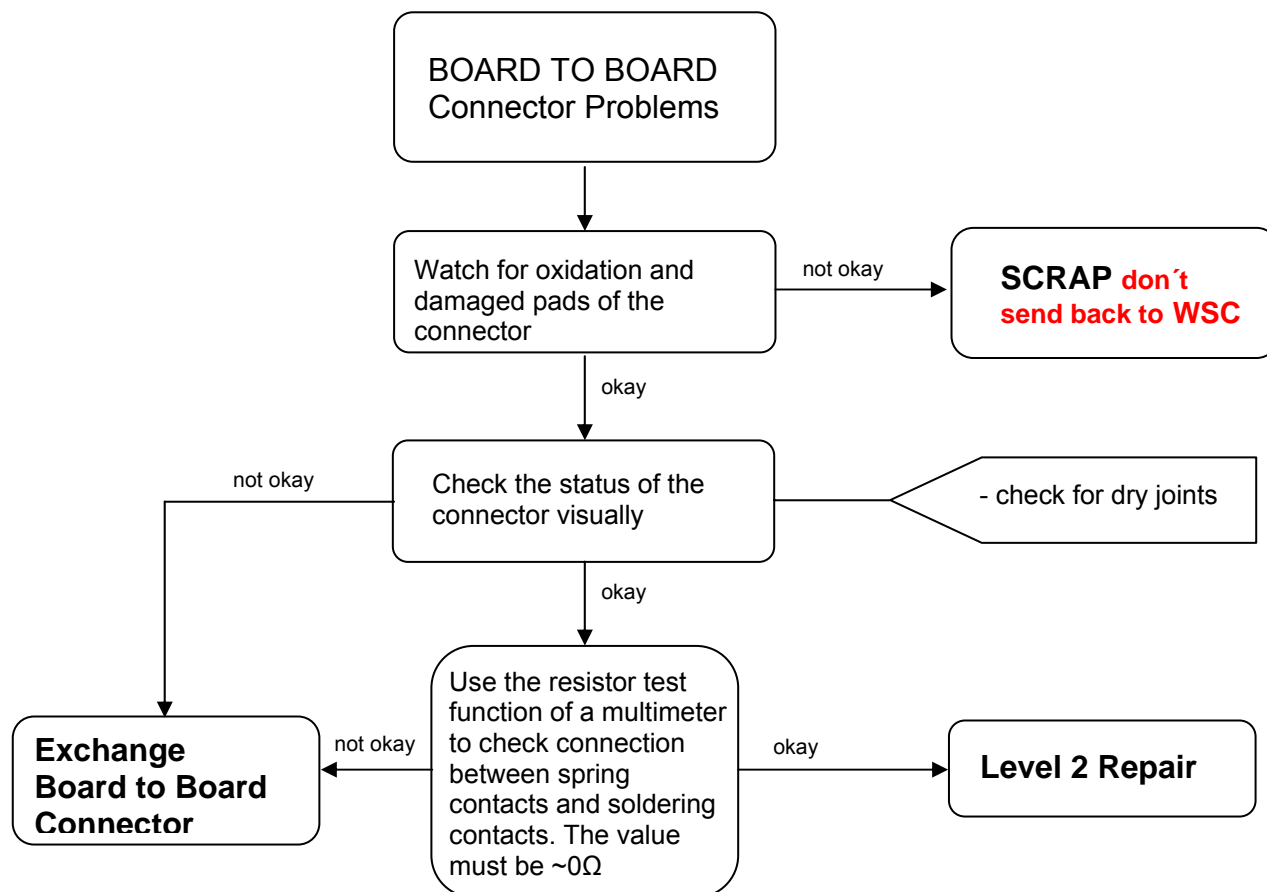
### Connector BATTERY

Use hot air blower to remove defective component. Avoid excessive heat! Watch surrounding components! Resolder new component afterwards.

E-commerce order number: L36334-Z97-C213  
Soldering temperature: 240 - 255°C  
IRIS Diagnose Code: 13000 Battery/Mechanical Damage

## 5 Connector BOARD TO BOARD

Fault Symptoms	
Customer: Display problems, like missing lines or columns on the LCD or display contrast problems or illumination problems No infrared connection possible Joystick malfunction	GRT: Display problems  Tbd. Tbd.



### Connector BOARD TO BOARD

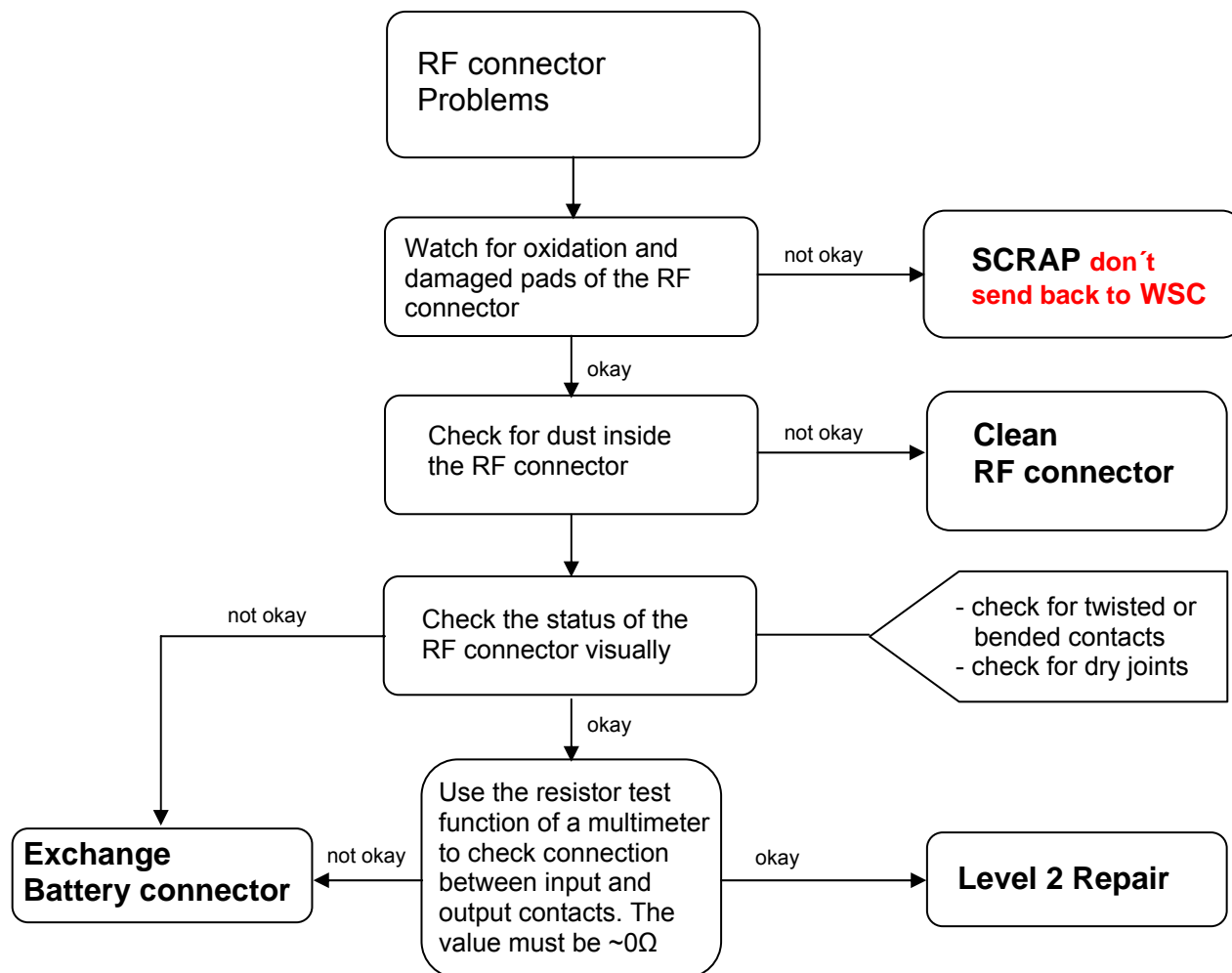
Use soldering iron to remove defective component. Avoid excessive heat! Watch surrounding components!  
Resolder new component afterwards.

E-commerce order number: L36 334-Z97-C340  
Soldering temperature: 240 - 255°C  
IRIS Diagnose Code:  
21000 Display / Performance  
22000 Display / Background Illumination  
41100 Interfaces / IRDA / No Function  
41300 Interfaces / IRDA / Mechanical Damage  
32100 Keys / Main / No Function  
32200 Keys / Main / Reduced Functionality



## 6 Connector RF Internal Antenna

Fault Symptoms	
Customer: Network search No location update possible	GRT: Failure by TX/RX measurements No location update possible



### Connector RF

Use hot air blower to remove defective component. Avoid excessive heat! Watch surrounding components! Resolder new component afterwards.

E-commerce order number: L36197-F5020-F650

Soldering temperature: 240 - 255°C

IRIS Diagnose Code:

81100 Radio / No Contact / Int. Antenna

82100 Radio / Low Receiving Signal / Int. Antenna

83100 Radio / Dropped Calls / Int. Antenna

84100 Radio / Call Setup / Int. Antenna

81200 Radio / No Contact / Ext. Antenna

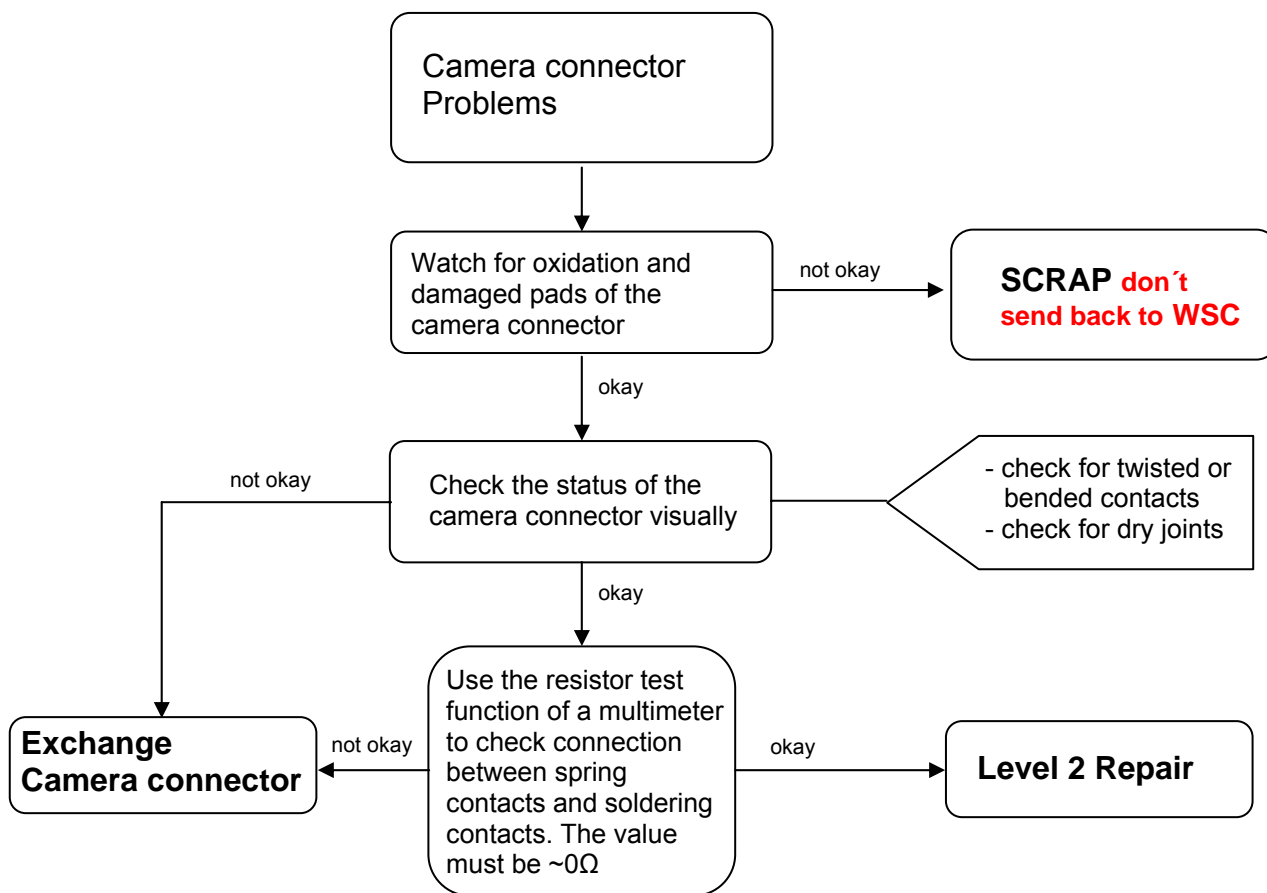
82200 Radio / Low Receiving Signal / Ext. Antenna

83200 Radio / Dropped Calls / Ext. Antenna

84200 Radio / Call Setup / Ext. Antenna

## 7 Connector Camera

Fault Symptoms	
Customer: Camera malfunction	GRT: Tbd.



### Connector CAMERA

Use hot air blower to remove defective component. Avoid excessive heat! Watch surrounding components! Resolder new component afterwards.

E-commerce order number: L36197-F5008-F341  
Soldering temperature: 240 - 255°C  
IRIS Diagnose Code: BA000 Accessories / Camera