

Service Repair Documentation

Level 2.5 - C65



Release	Date	Department	Notes to change
1.0	01.06.2004	ICM MP CCQ GRM T	New document

Introduction

This Service Repair Documentation is intended to carry out repairs on Siemens repair level 2.5. The described failures shall be repaired in Siemens authorized local workshops only.

All repairs have to be carried out in an ESD protected environment and with ESD protected equipment/tools. For all activities the international ESD regulations have to be considered.

Assembling/disassembling has to be done according to the latest C65 Level 2 repair documentation. It has to be ensured that every repaired mobile Phone is checked according to the latest released General Test Instruction document (both documents are available in the Technical Support section of the C-market).

Check at least weekly C-market for updates and consider all C65 related Customer Care Information

C65 Partnumber on IMEI label: S30880-S7800-#xxx

, while # may be any letter (A-Z) and xxx may be any number from 100, 101, 102....

If you have any questions regarding the repair procedures or technical questions spare not hesitate to contact our technical support team in Kamp-Lintfort, Germany:

Tel.: +49 2842 95 4666
Fax: +49 2842 95 4302
e-mail: st-support@klf.siemens.de

Table of Content

1 C65 board layout4

2 Connector SIM Card Reader5

3 Connector IO Jack6

4 Connector Board to Board75

Connector Battery8

6 IRDA Diode9

7 Connector Display10

8 Connector Camera11

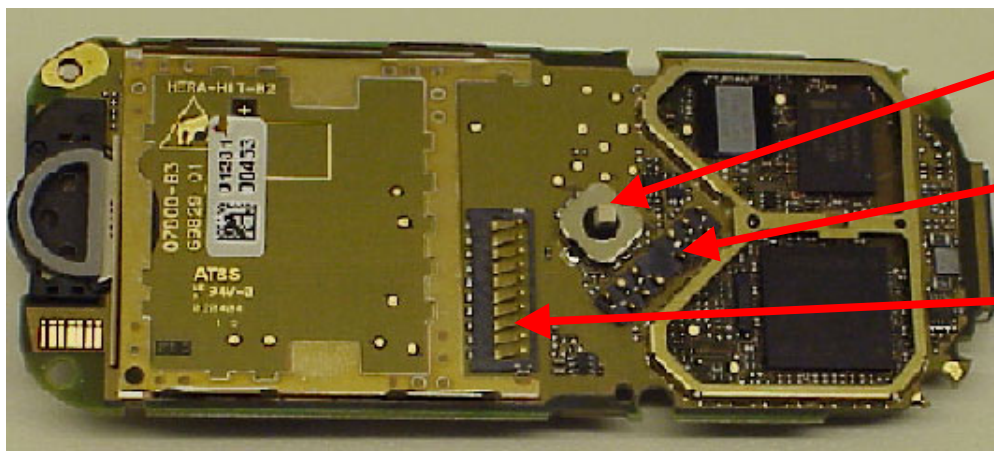
9 Connector RF12

10 Joystick13

1 C65 board layout

Jigs, Tools and Working materials for all described repairs:

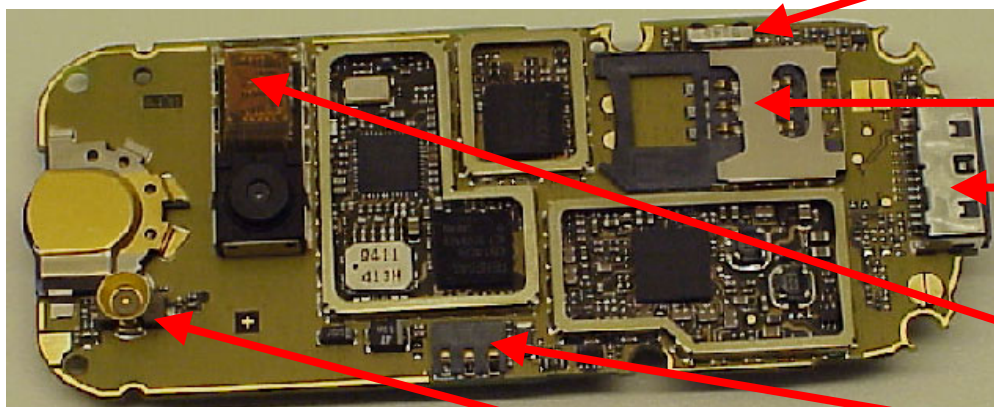
- hot air blower
- soldering gun
- tweezers
- flux
- solder



Joystick SW

Connector
Board to Board

Connector
Display



Diode
IRDA

Connector
SIM CARD READER

Connector
IO JACK

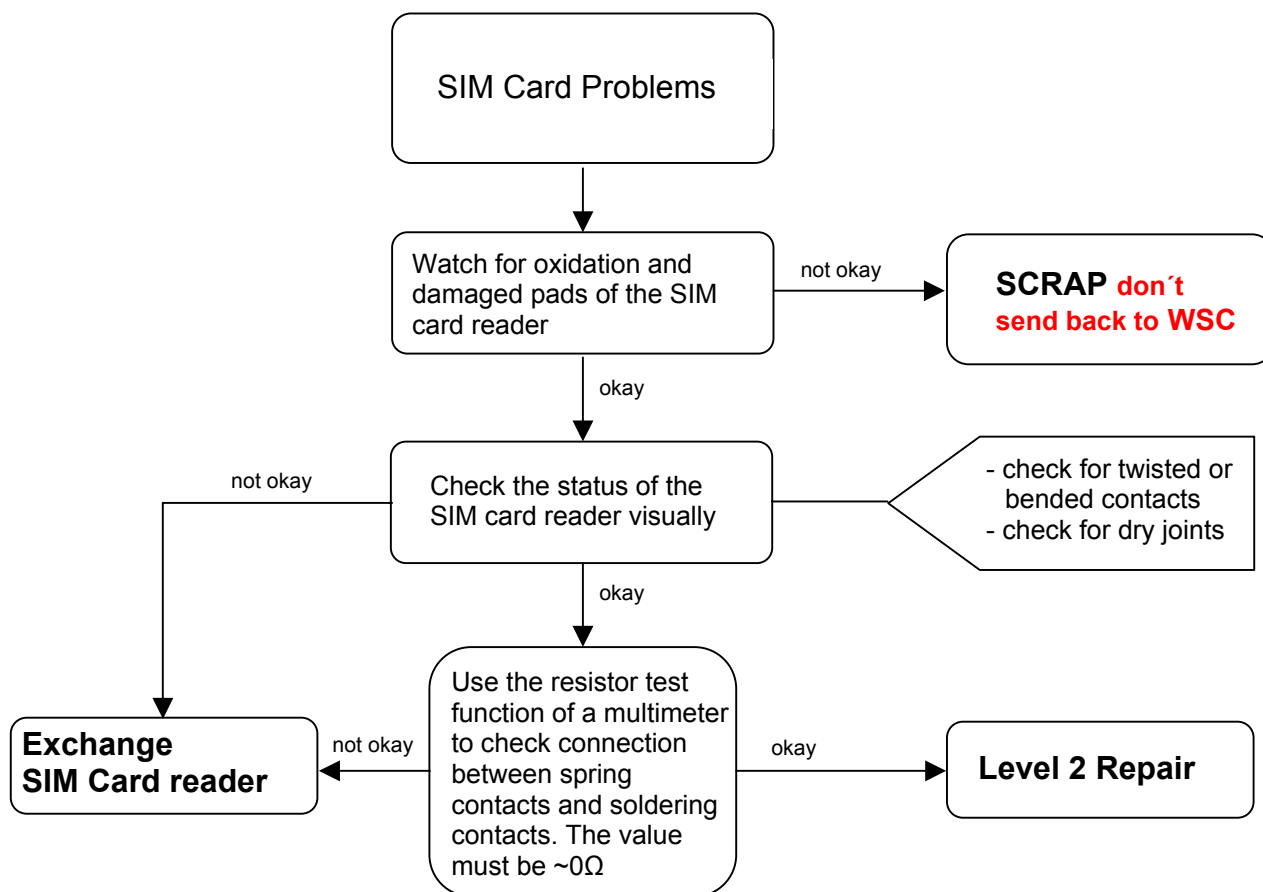
Connector
BATTERY

Connector
BOARD TO BOARD

Connector
RF

2 Connector SIM Card Reader

Fault Symptoms	
Customer: Handset does not accept SIM card	GRT: SIM Card Problems



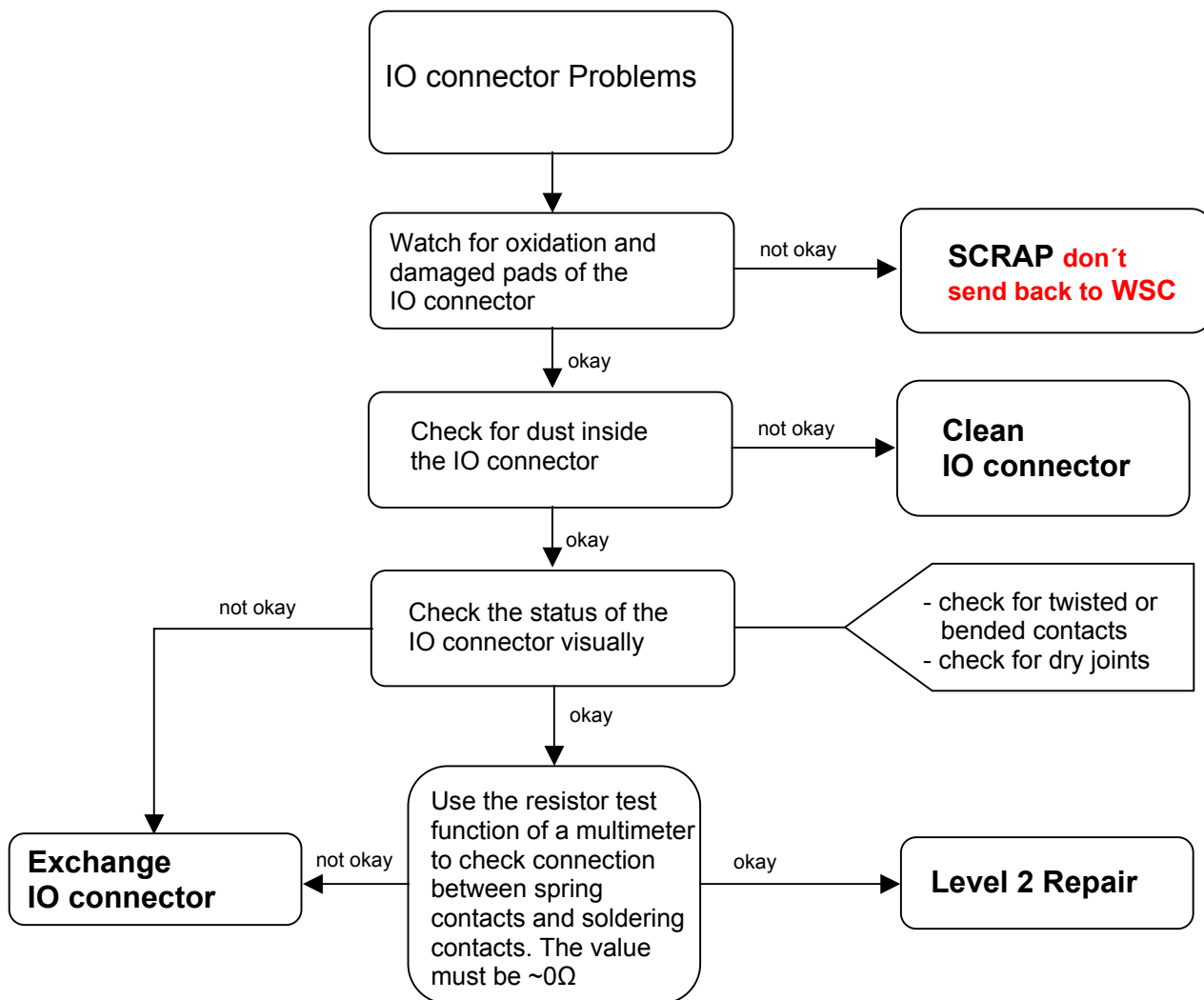
Connector SIM Card Reader

Use soldering iron to remove defective component. Avoid excessive heat! Watch surrounding components! Resolder new component afterwards.

E-commerce order number: L36334-Z97-C335
Soldering temperature: 240 - 255°C
IRIS Diagnose Code: 43300 Interface/SIM Cardreader/Mechanical Damage

3 Connector IO Jack

Fault Symptoms	
Customer: Charging Problems Problems with external loudspeaker or microphone when using a car kit Problems with accessories connected at the IO connector	GRT: No connection to GRT Tbd.



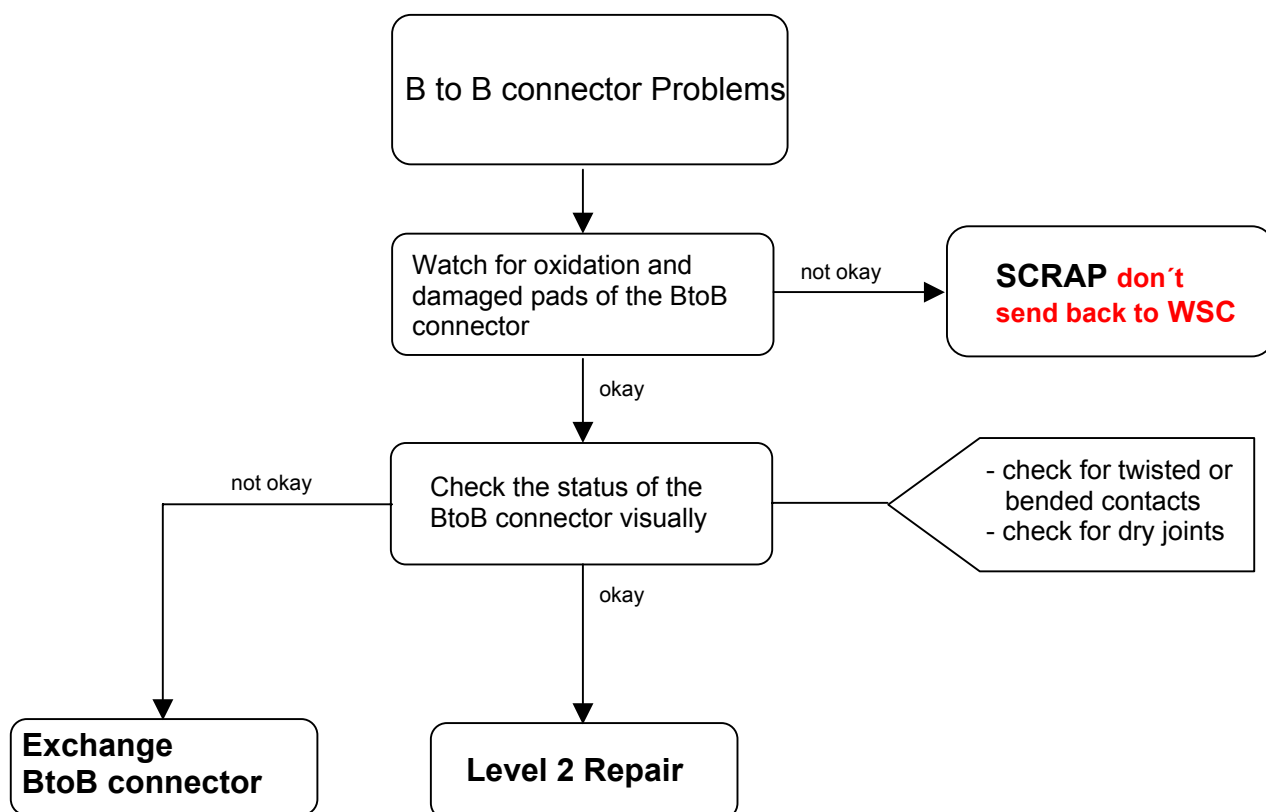
Connector IO Jack

Use soldering iron to remove defective component. Avoid excessive heat! Watch surrounding components!
Resolder new component afterwards.

E-commerce order number: L36334-Z93-C303
Soldering temperature: 240 - 255°C
IRIS Diagnose Code: 46100 Interface/Charging Connector/Mechanical Damage
47300 Interface/Data Interface/Mechanical Damage
4B100 Interface/Headset Connector/Mechanical Damage

4 Connector Board to Board

Fault Symptoms	
Customer: Keyboard malfunction Keypad illumination does not work	GRT: Keyboard malfunction Tbd.



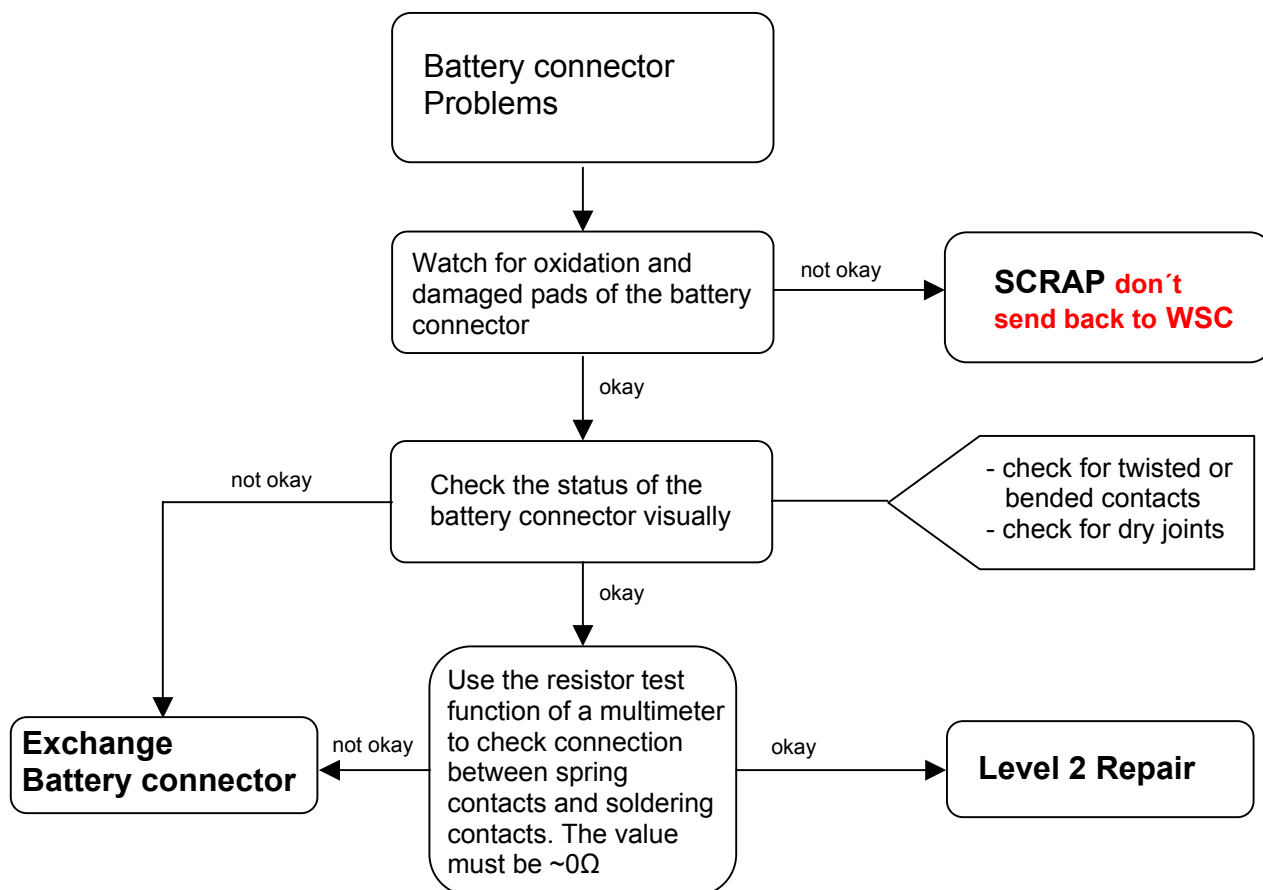
Connector Board to Board

Use hot air blower to remove defective component. Avoid excessive heat! Watch surrounding components!
Resolder new component afterwards.

E-commerce order number: L36334-Z97-C162
Soldering temperature: 240 - 255°C
IRIS Diagnose Code: 32100 Keys / Main / No Function
32200 Keys / Main / Reduced Functionality
36000 Keys / Illumination

5 Connector Battery

Fault Symptoms	
Customer: Mobile does not switch on	GRT: No connection to GRT



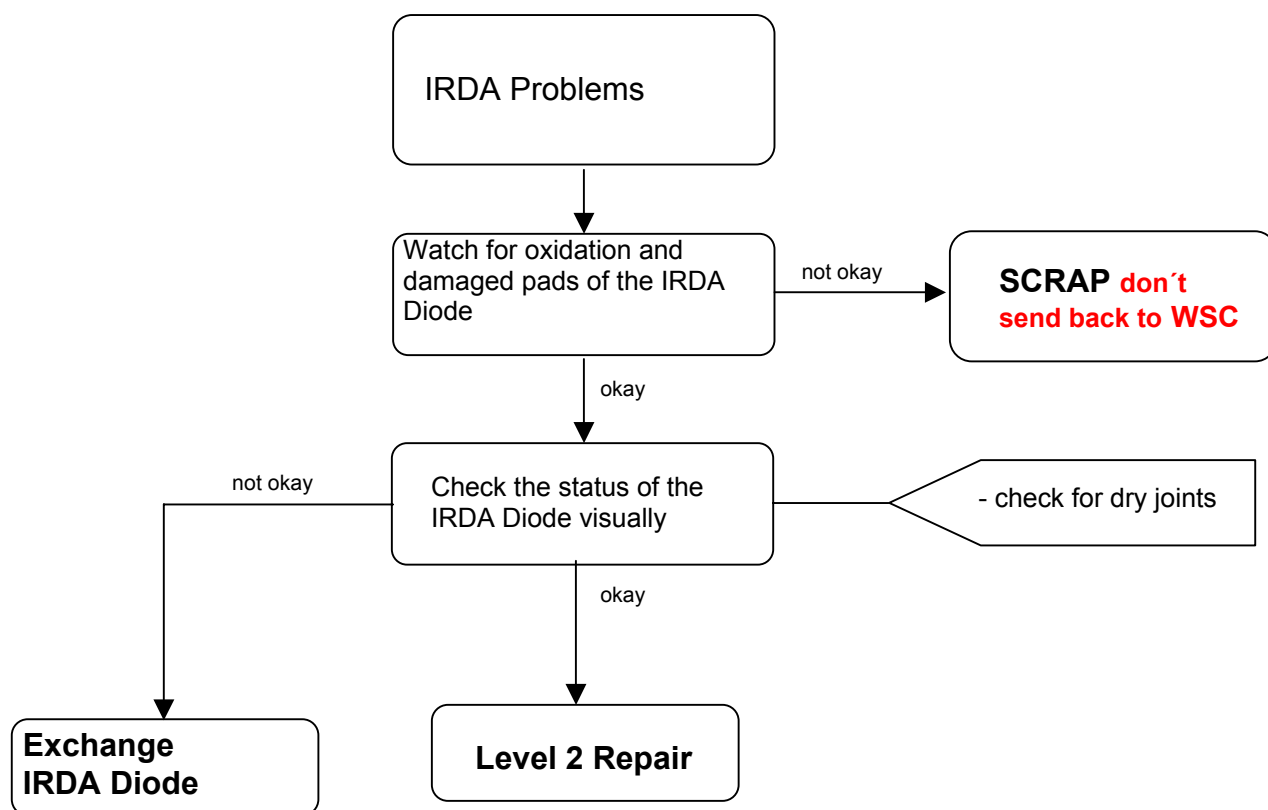
Connector BATTERY

Use hot air blower to remove defective component. Avoid excessive heat! Watch surrounding components!
Resolder new component afterwards.

E-commerce order number: L36334-Z97-C336
Soldering temperature: 240 - 255°C
IRIS Diagnose Code: 13000 Battery/Mechanical Damage

6 IRDA Diode

Fault Symptoms	
Customer: IRDA does not work	GRT: Tbd.



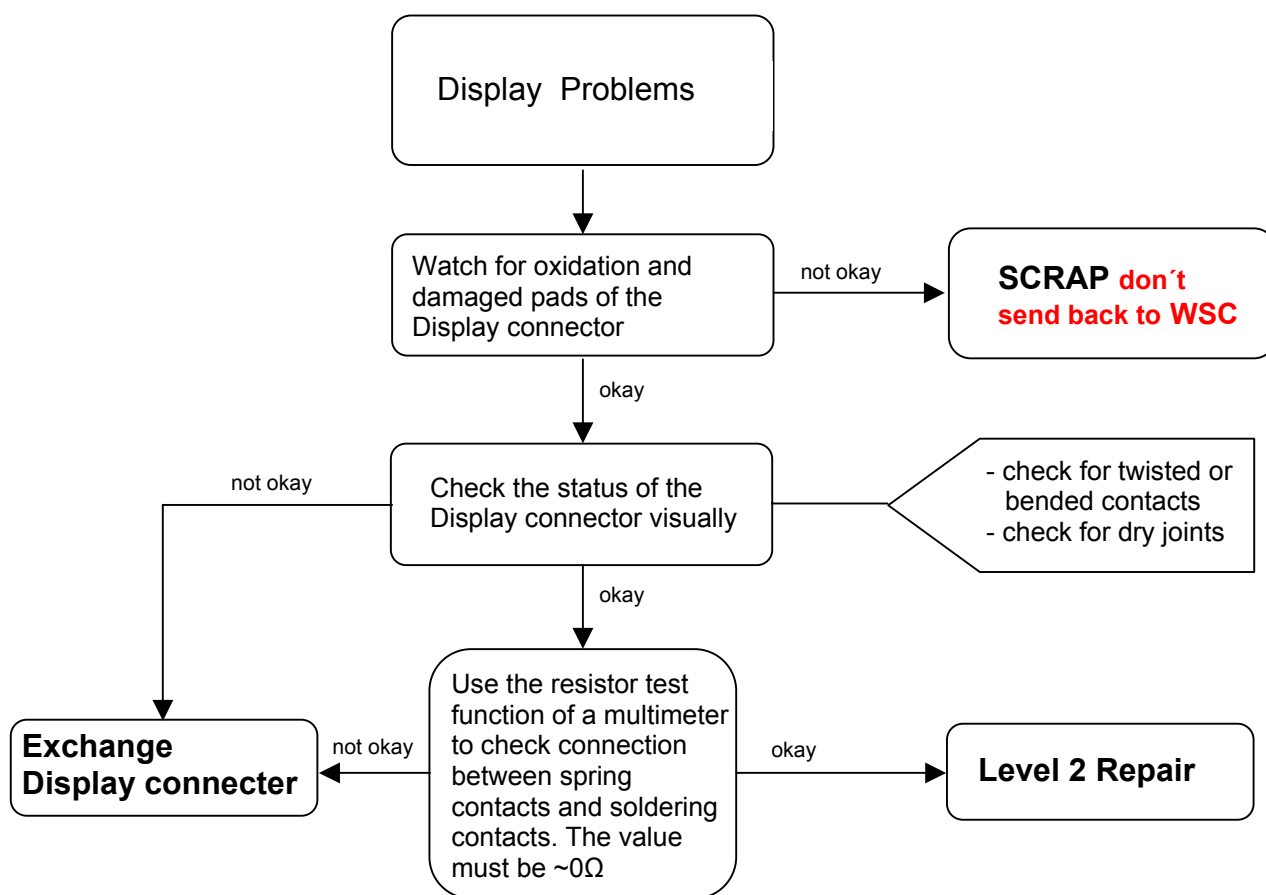
Irda Diode

Use hot air blower to remove defective component. Avoid excessive heat! Watch surrounding components!
Resolder new component afterwards.

E-commerce order number: L36197-F5008-F492
Soldering temperature: 240 - 255°C
IRIS Diagnose Code: 41100 Interfaces / IRDA / No Function
41300 Interfaces / IRDA / Mechanical Damage

7 Connector Display

Fault Symptoms	
Customer: Display problems, like missing lines or columns on the LCD or display contrast problems or illumination problems	GRT: Display Problems



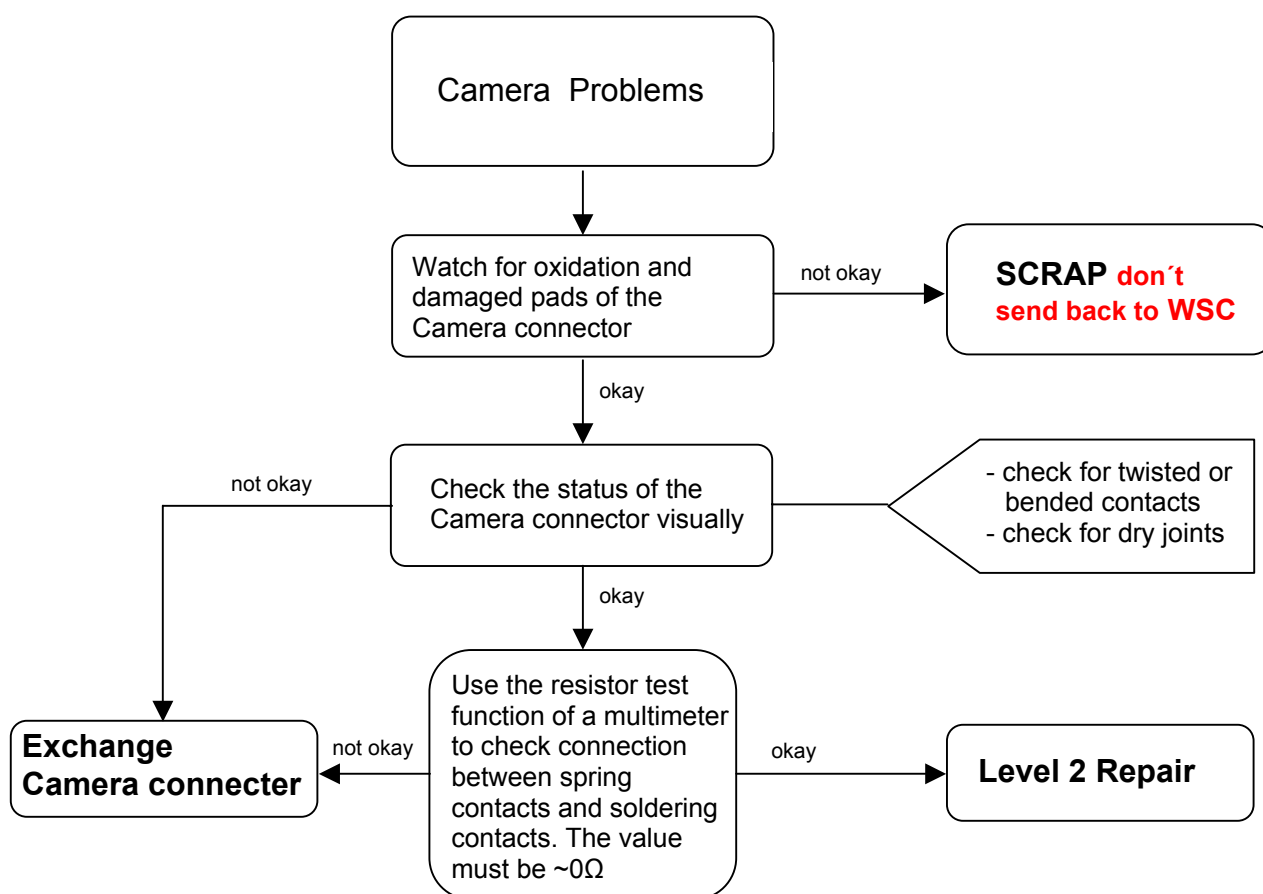
Connector Display

Use soldering iron to remove defective component. Avoid excessive heat! Watch surrounding components! Resolder new component afterwards.

E-commerce order number: L36334-Z97-C205
Soldering temperature: 240 - 255°C
IRIS Diagnose Code: 21000 Display / Performance
22000 Display / Background Illumination

8 Connector Camera

Fault Symptoms	
Customer: No or bad Camera	GRT: Camera Problems



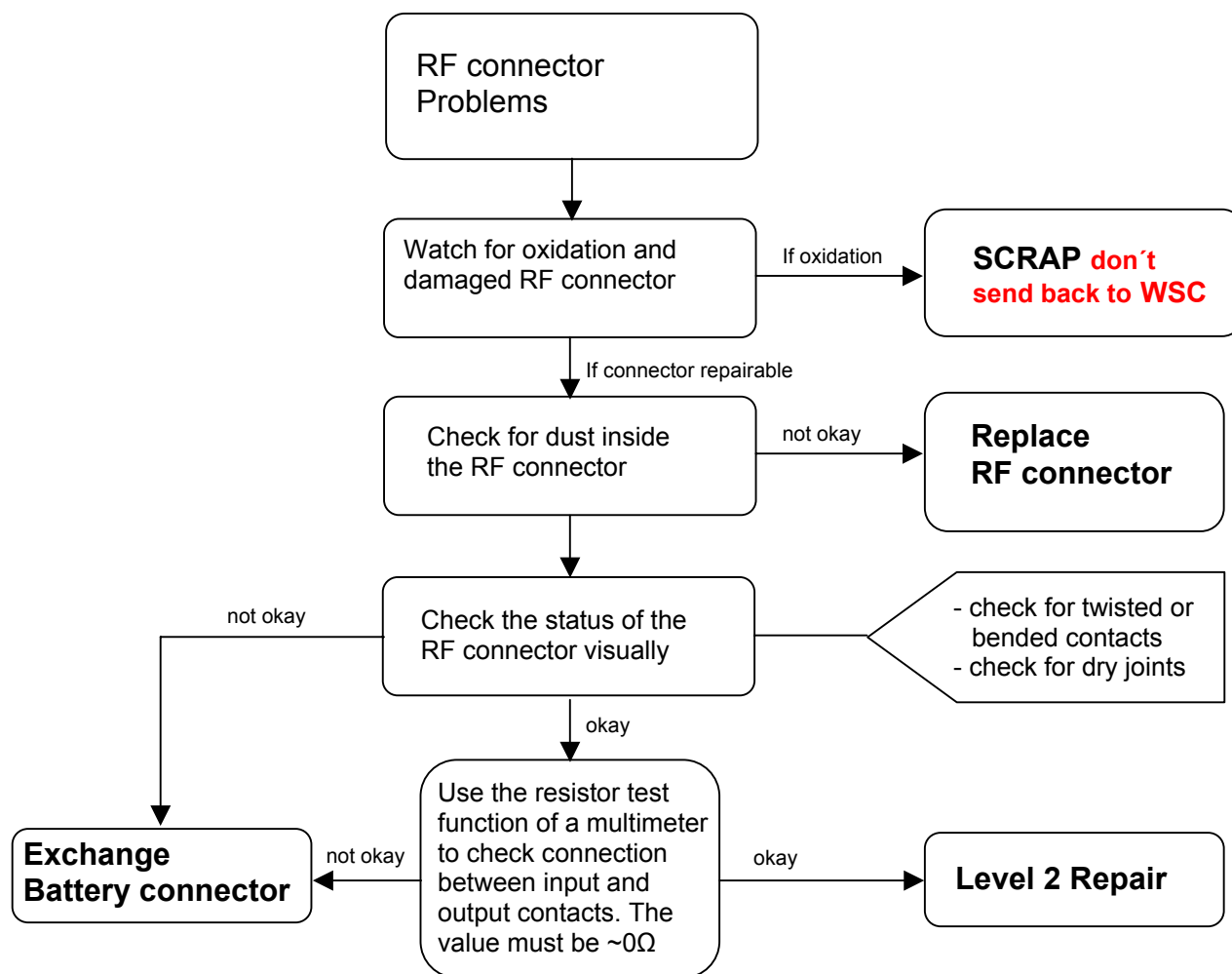
Connector Camera

Use hot air blower to remove defective component. Avoid excessive heat! Watch surrounding components! Resolder new component afterwards.

E-commerce order number: L36197-F5008-F341
Soldering temperature: 240 - 255°C
IRIS Diagnose Code: 9B100 Functionality / Integrated Camera / No Function

9 Connector RF

Fault Symptoms	
Customer: Network search No location update possible	GRT: Failure by TX/RX measurements No location update possible



Connector RF

Use hot air blower to remove defective component. Avoid excessive heat! Watch surrounding components! Resolder new component afterwards.

E-commerce order number: L36334-Z93-C297

Soldering temperature: 240 - 255°C

IRIS Diagnose Code:

81100 Radio / No Contact / Int. Antenna

82100 Radio / Low Receiving Signal / Int. Antenna

83100 Radio / Dropped Calls / Int. Antenna

84100 Radio / Call Setup / Int. Antenna

81200 Radio / No Contact / Ext. Antenna

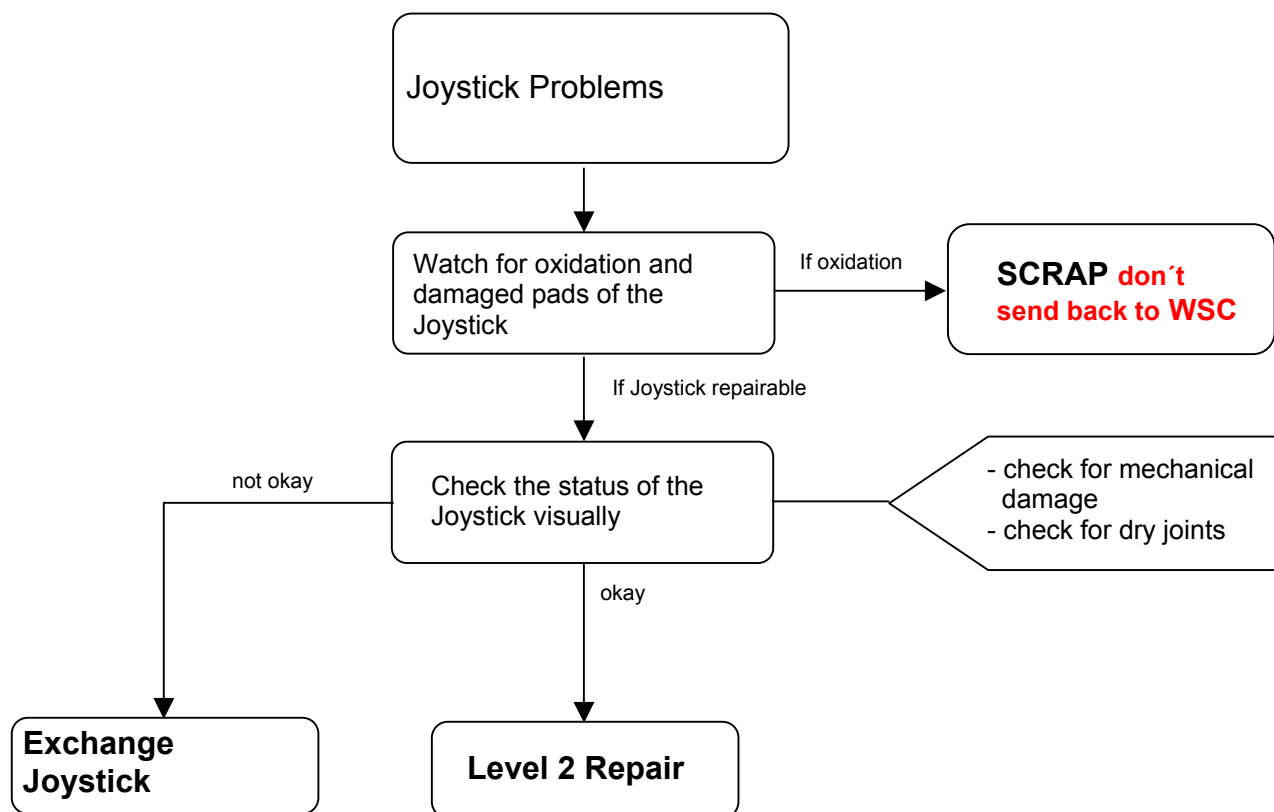
82200 Radio / Low Receiving Signal / Ext. Antenna

83200 Radio / Dropped Calls / Ext. Antenna

84200 Radio / Call Setup / Ext. Antenna

10 Joystick

Fault Symptoms	
Customer: Joystick malfunction	GRT: Tbd.



Joystick

Use hot air blower to remove defective component. Avoid excessive heat! Watch surrounding components! Resolder new component afterwards.

E-commerce order number: L36315-Z77-C218
Soldering temperature: 240 - 255°C
IRIS Diagnose Code: 32100 Keys / Main / No Function
32200 Keys / Main / Reduced Functionality