

# TealMagnify User's Manual



Program Version 2.71  
Last Updated: March 14, 2008

## Table of Contents

<b>Introduction .....</b>	<b>1</b>
<i>Description.....</i>	<i>1</i>
<i>Contents .....</i>	<i>1</i>
<i>Installing .....</i>	<i>2</i>
<b>Chapter 1 – Overview .....</b>	<b>3</b>
<b>Chapter 2 – Using the Program.....</b>	<b>4</b>
<i>Enabling .....</i>	<i>4</i>
<i>Activation .....</i>	<i>4</i>
<i>Full Screen Mode .....</i>	<i>5</i>
<i>Closing .....</i>	<i>5</i>
<b>Appendix A – Compatibility .....</b>	<b>6</b>
<b>Appendix B – Revision History .....</b>	<b>7</b>
<b>Appendix C – Contact Info .....</b>	<b>9</b>
<b>Appendix D – Registering.....</b>	<b>9</b>
<b>Appendix E – Products.....</b>	<b>10</b>
<b>Appendix F – Legal Notice .....</b>	<b>13</b>

# Introduction

## ***Description***

Thank you for trying *TealMagnify!* (Aka *TealLens*). This is a simple system extension that provides ever-ready magnifying glass that allows you to enlarge any part of the display from within almost any program.

## ***Contents***

This archive contains the following files:

Program files:

TEALLENS.PRC	The TealMagnify program file
TEALMSTR.PRC	The TealMaster System Extensions Manager (demo)
TPSETUP.EXE	Windows easy-installer

Document files:

LENSDOC.PDF	This document in Adobe Acrobat (PDF) format
LENSDOC.HTM	This document in HTML format (sans images)
LENSDOC.PRC	This document in TealDoc format
REGISTER.HTM	TealPoint Registration form in HTML format
REGISTER.TXT	TealPoint Registration form in text format

## ***Installing***

TealMagnify is a PalmOS system extension, hooking itself into PalmOS using the Hackmaster extensions standard. Hackmaster system extensions, commonly called “hacks”, are a safe and standard way to add and manage extended system functionality under PalmOS.

In order to use TealMagnify or other hacks, you'll need a standard system extensions manager. We've included a trial version of our own extensions manager TealMaster, but you may use Hackmaster (shareware) or X-Master (freeware) as well on PalmOS 4 or earlier.

As of this date, however, only TealMaster is compatible with newer devices running PalmOS 5.



Use the Palm Install Tool that comes with your organizer to install the program file **TEALLENS.PRC**. Also install **TEALMSTR.PRC** if you do not already have it on your organizer. The Palm Install Tool comes installed on your desktop computer as part of your original software package, and is accessible from the Palm Desktop program as an icon on the left hand side. Instructions on how to use the Palm Install Tool are in the Handbook that came with your Pilot, PalmPilot, or WorkPad.

This document also comes as a Palm document file **LENSDOC.PRC**, which you can install and view with our program TealDoc.

Under Windows, you can alternatively run TPSETUP.EXE, our easy installer program.

---

**Important Note:** Before updating or deleting a previous version of any TealMaster/Hackmaster system extension like TealLaunch, you must to disable the extension first in the TealMaster/Hackmaster control screen.

### **Terminology**

This manual uses the term 'button' to describe tappable rounded rectangular areas on the Palm display screen. 'Hardware buttons' refer to the four standard application buttons at the bottom of the organizer, the up and down buttons, power button, and contrast button on the Palm V or Palm IIIc. Lastly, 'silkscreen buttons' refer to the four round tappable areas printed below the Palm display screen on either side of the graffiti writing area.

# Chapter 1 – Overview

*TealMagnify* will let you stop squinting at the small print on your Palm's screen. You can pop it up when you need it, scrolling the magnified area around the display screen.

## Silkscreen Activation



When enabled, **TealMagnify** hooks itself into the *Find* silk-screened button to the right of the graffiti area. This button normally initiates a system **Global Find** operation.

Fortuitously, this button already has a magnifying glass image. *TealMagnify!* is immediately activated when the button is pressed. To do a normal find operation, you can either double-tap the find button (when *TealMagnify* is registered) or use the provided onscreen *Find* button.

## Keyboard Activation



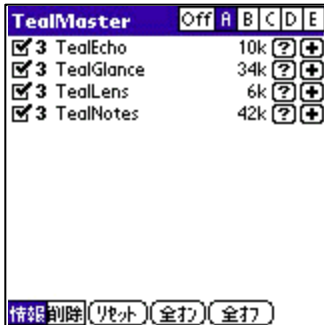
On devices with integrated keyboards, *TealMagnify* is activated by whatever key combination is normally used to start a Global Find. Typically, this involves a press of a Find button following or while simultaneously holding down a shift button.

### TREO 600

On the TREO 600, press and HOLD the blue/gray ALT/Function button while pressing the shift/find button. If you release the ALT button before pressing the find button you will get a normal global find, but if you hold it down, you will activate *TealMagnify*.

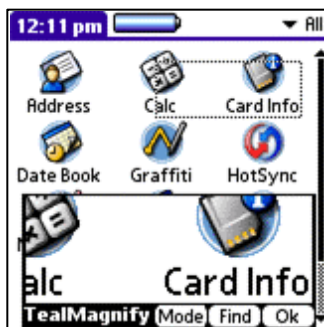
## Chapter 2 – Using the Program

### Enabling



Enable TealMagnify by running your system extensions manager (TealMaster) and checking the checkbox next to the “TealLens” entry there.

### Activation



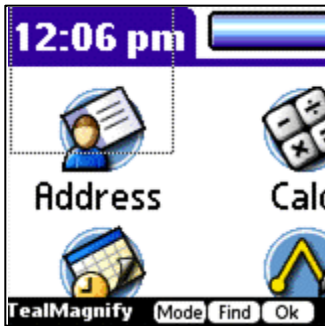
Simply tap on your handheld's silk-screened *Find* button, or activate the keyboard find button or shifted button combination.

Initially, in the lower half of the screen the magnifying window will appear, while the region being magnified will be highlighted by a gray box in the upper half of the display.

To change the area being magnified, simply tap on the region to see or “tap and drag” the highlight region around the display. When you move the highlighted region to the lower half of the display, the magnify window automatically snaps out of the way to the top of the display. To read a column of data (such as telephone numbers) use the Handheld up and down scroll buttons to move the magnifying window vertically.

When done, simply tap *Okay* to return to normal operation or TealMagnify's *Find* option to initiate a normal find operation. Alternately, you may also tap the silkscreened *Find* button a second time to dismiss TealMagnify, quickly after the initial tap (if registered) to start a *Find* operation.

## Full Screen Mode

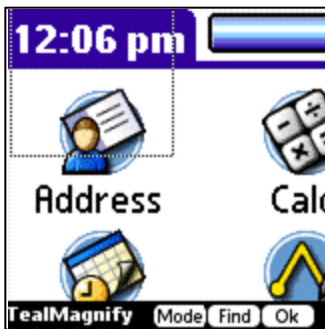


To switch TealMagnify to **full-screen mode**, tap on the “Mode” button when TealMagnify is active. In this mode, the full screen is used to show the magnified area. Since the resolution is at double size, one quarter of the screen display can be seen at any time.

Moving the magnified area functions the same as in normal mode, but the highlighted rectangle appears on the magnified area. The region being magnified corresponds to the position and size of the highlighted area, but relative to the original unmagnified screen “below” the magnified display. Thus, if the rectangle is present in the upper left hand corner, the magnified area reflects shows all the

pixels that would be in the indicated region of the screen if the magnified display were not covering them up.

## Closing



To exit TealMagnify, simply tap on the “OK” button or tap/press the system Global Find button a second time.

Tap the “Find” button to start a normal system Global Find operation. On devices with silkscreened find buttons, a double-tap of the button will start a Global Find directly.

## Appendix A – Compatibility

As we cannot control the style and robustness of other products, we cannot guarantee compatibility with PalmPilot applications beyond those included from Palm Computing. However, we try to resolve compatibility issues as best we can, working with other developers where possible.

*TealMagnify*, like all *Hackmaster* applications, hook into the PalmPilot operating system in a way which may not be compatible with all other programs of this type, as all such programs must share limited system resources. If you experience unexpected behavior or crashes, always try disabling all other hacks first to diagnose whether what you experience is the result of a conflict or lack of system resources.

### *Sony JogDial*

On Sony CLIE handhelds, the jog dial will scroll the magnification window left and right, stepping down 11 pixels (the standard line height) when it reaches the end of a line. This feature makes the jog dial useful for reading a page of text. To enable this feature, make sure the Sony Jog Assist feature is not turned on in the current application. Other handheld jog dials may not be supported because they emulate the vertical scroll buttons which already have alternate functionality defined.

### *Backdrop EZ Hack*

Compatibility to Backdrop EZ Hack has been added in TealMagnify 2.03

### *FindHack*

FindHack patches into the system find call, just like TealMagnify, but provides no way to chain to the next program on the list, as it was meant to fully replace the standard find command, not just augment it. You can still activate TealMagnify, however, but swapping the order in which the two programs appear in Hackmaster's extension list. Uncheck and recheck an item to bring it to the top of the extensions list.

### *AvantGo*

As TealMagnify uses PalmOS drawing routines to draw to the screen, it can only function in display modes supported by the Palm OS. Palm OS versions prior to 3.3 did not support all available grayscale modes. However, some programs, like AvantGo, support additional modes in earlier OS versions by manipulating hardware registers directly. TealMagnify cannot function properly with these programs when running in such display modes.

# Appendix B – Revision History

Version 2.71 – March 14, 2008

- Added compatibility with newer Treo and Centro handhelds, fixing popup from automatically closing after start

Version 2.70 – May 24, 2007

- Added compatibility with Palm Z22

Version 2.66 – February 28, 2006

- Updated bundled TealMaster file with TX-friendly version

Version 2.65 – December 6, 2005

- Fixed position of HotSync User Name drawn on config screen

Version 2.64 – May 10, 2005

- Clarified instructions on register/info screen
- Updated TealMaster to new NVFS-patched version
- Updated to auto-activate cursor on register screen for Treo650/Tungsten T5

Version 2.62 - October 21, 2004

- Updated in-program instructions to indicate Alt-shift button must be held down when hitting find button to activate (for treo 600)
- Fixed to restore screen properly if screen size/orientation changed
- Fixed popup window from closing if button is not held down long enough due to key echo on Treo 600

Version 2.60 – June 4, 2004

- Added support for landscape display devices
- Added support for OS5 high-resolution Sony handhelds
- Added support for panning with PalmOS 5.2 (Treo600) 5-way pads
- Fixed support for Treo600 keyboard activation (which sends echoed keystroke)

Version 2.51 – November 12, 2002

- Fixed restoration of video state on HandEra 330

Version 2.50 – November 7, 2002

- Added support for ARM handhelds and OS 5.0
- Added support for high resolution displays under OS 5.0
- Added support for high resolution displays on Sony CLIE
- Added support for HandEra 330
- Added support for 16-bit display modes
- Added Sony Jog Dial line-by-line horizontal scrolling

Version 2.10 - August 17, 2000

- Added support for 4 and 16-shade grayscale modes (in PalmOS 3.3 for 16-shade and 3.1 for 4-shade)

Version 2.03 - Jan 18, 2000

- Added compatibility with Palm OS 3.3 registration routines
- Added compatibility with Palm OS 3.3 mag window dragging
- Added compatibility with Backdrop EZ Hack
- Added preselect to registration line
- Fixed stability with low memory conditions

Version 2.02 -

- Added compatibility with future Palm devices

Version 2.01

- Fixed compatibility with TealLock

Version 2.00

- Added full-screen mode
- Mode and position of screen are saved between uses.

Version 1.08

- Application buttons move window sideways.
- Window now centers on cursor.



Version 1.07

- Works with all popups and dialog boxes.

Version 1.06

- Registration changed so key survives warm boot.
- Find key behaves more intelligently.
- Double-click goes to find, but if second click occurs later (say, after mag use) TealMagnify! just exits. Note, if unregistered, register message will delay the second click.

## **Appendix C – Contact Info**

TealMagnify by TealPoint Software  
©1999-2008 All Rights Reserved.

TealPoint Software  
454 Las Gallinas Ave #318  
San Rafael, CA 94903-3618  
We look forward to hearing from you.

Please visit us at [www.tealpoint.com](http://www.tealpoint.com), or email us at [contact@tealpoint.com](mailto:contact@tealpoint.com).

## **Appendix D – Registering**

Registering allows you to use the program past the 30 day expiration period and turns off registration reminders.

Currently, you may register by snail mail or online with a credit card and a secured server from the store where you downloaded the software. For the first option, send the following information on a sheet of paper separate from your payment.

- Product Name
- E-Mail Address (write clearly)
- HotSync User ID (Pilot Name Required for Passkey generation. It can be found on the main screen of the HotSync application on the Pilot as "Welcome \_\_\_\_\_" or in the corner on a PalmIII or higher)
- Check (drawn off a US Bank) or Money Order for (\$14.95 US). No international checks or money orders please.

## Appendix E – Products

Visit us online for our complete product line, including:

### **TEALAGENT ( <http://www.tealpoint.com/softagnt.htm> )**

Get news, movie times, stock quotes, driving directions, web pages and more without need for a wireless connection. TealAgent fetches and formats web-based content for offline viewing.

### **TEALALIAS ( <http://www.tealpoint.com/softalia.htm> )**

Free up memory and make the most of external expansion cards. Placeholder 'Alias' shortcut files automatically find, load, and launch apps and data from external SD cards, increasing free main memory.

### **TEALAUTO ( <http://www.tealpoint.com/softauto.htm> )**

Track and graph automobile mileage, service, and expenses with TealAuto, the complete log book for your car or any vehicle. Extensive customization options and unmatched in features and functionality.

### **TEALBACKUP ( <http://www.tealpoint.com/softback.htm> )**

Backup your valuable data with TealBackup, supporting manual and automatic backups to SD/MMC/CF cards and Memory Stick, backups through HotSync, and optional compression and encryption.

### **TEALDESKTOP ( <http://www.tealpoint.com/softdesk.htm> )**

Launch applications with TealDesktop, the themed replacement for the standard system launcher screen with tabs, multiple card folders, drag and drop, and more

### **TEALDOC ( <http://www.tealpoint.com/softdoc.htm> )**

Read, edit, and browse documents, Doc files, eBooks and text files with TealDoc, the enhanced doc reader. Extensive display and customization options; TealDoc is unmatched in features and usability.

### **TEALECHO ( <http://www.tealpoint.com/softecho.htm> )**

Improve your Graffiti text input speed and accuracy, seeing what you write with TealEcho digital "ink". No more writing blind!

### **TEALGLANCE ( <http://www.tealpoint.com/softglnc.htm> )**

See the time, date, upcoming appointments and todo items at power-up with TealGlance. The TealGlance pop-up utility comes up when you power up your handheld letting you see your day "at a glance."

### **TEALINFO ( <http://www.tealpoint.com/softinfo.htm> )**

Lookup postal rates, area codes, tip tables, schedules, airports, and info from hundreds of free TealInfo databases. Create you own mini-apps; a handheld reference library.

### **TEALLAUNCH ( <http://www.tealpoint.com/softlnch.htm> )**

Launch applications instantly with the TealLaunch pop-up launcher and button/stroke-mapping utility. Map applications to button presses and pen swipes so you can get to your apps quickly.

### **TEALLOCK ( <http://www.tealpoint.com/softlock.htm> )**

Secure and protect your handheld with TealLock, the automatic locking program with encryption and card support. TealLock has unmatched features and customization options for personal or corporate use.

**TEALMAGNIFY ( <http://www.tealpoint.com/softlens.htm> )**

Save your eyesight with TealMagnify, an ever-ready magnifying glass that works with most any program. TealMagnify lets you enlarge the screen for those times the text is too small to read.

**TEALMASTER ( <http://www.tealpoint.com/softmstr.htm> )**

Replace Hackmaster with TealMaster, the supercharged 100%-compatible system extensions manager. TealMaster adds enhanced stability, configuration and diagnostic features and PalmOS 5.0 hack emulation.

**TEALMEAL ( <http://www.tealpoint.com/softmeal.htm> )**

Save and recall your favorite restaurants with TealMeal, the personal restaurant database. With TealMeal's handy sorting and selection options, never ask "where to eat" again.

**TEALMEMBRAIN ( <http://www.tealpoint.com/softmemb.htm> )**

Stop crashes and monitor your memory use with TealMemBrain, the application stack stabilizer. TealMemBrain boosts your stack space on OS3 and OS4 handhelds, eliminating the major cause of system instability.

**TEALMOVER ( <http://www.tealpoint.com/softmovr.htm> )**

Beam, delete, rename, and copy files with TealMover, the file management utility for SD/CF/MS cards. TealMover lets you see, move, modify, hex edit, and delete individual files.

**TEALMOVIE ( <http://www.tealpoint.com/softmovi.htm> )**

Play and convert high-quality video and synchronized sound with the TealMovie multimedia system. TealMovie includes a handheld audio/movie player and a Windows AVI/Quicktime converter program.

**TEALNOTES ( <http://www.tealpoint.com/softnote.htm> )**

Insert freehand graphics anywhere with TealNotes "sticky notes" for Palm OS. TealNotes can be inserted into memos, to-do lists, address book entries--almost anywhere you currently have editable text.

**TEALPAINT ( <http://www.tealpoint.com/softpnt.htm> )**

Paint, sketch, or draw with TealPaint, the all-in-one graphics paint program for PalmOS. Highlights include 20 tools, 16 patterns, 24 brushes, zoom, hires, layers, multi-undo, and a desktop converter.

**TEALPHONE ( <http://www.tealpoint.com/softphon.htm> )**

Supercharge the address book with TealPhone, the contacts replacement with superior interface and options. Highlights include enhanced display, search, phone-dialing, groups, and linking.

**TEALPRINT ( <http://www.tealpoint.com/softprnt.htm> )**

Print text and graphics to IR, serial, and Windows printers with TealPrint. With numerous connection options, TealPrint, is the all-in-one text and graphic printing solution.

**TEALSAFE ( <http://www.tealpoint.com/softsafe.htm> )**

Store your passwords, credit cards, PIN numbers, and bank accounts in the TealSafe data wallet. With maximum security and encryption, TealSafe is a must for features and security.

**TEALSCRIPT ( <http://www.tealpoint.com/softscrp.htm> )**

Replace Graffiti 1 or Graffiti 2 with TealScript, the text recognition system you can customize. Unlike other systems, you can make or change your own strokes for better speed and accuracy.

**TEALTOOLS ( <http://www.tealpoint.com/softtool.htm> )**

Improve productivity with TealTools pop-up Palm Desk Accessories. TealTools includes a popup calculator, clock/stopwatch, preferences panel, editing panel, memopad, and a file/backup manager.

**SHORTCIRCUIT ( <http://www.tealpoint.com/softshrt.htm> )**

A new twist on gameplay fused from your all time action puzzle favorite games, connect falling conduit pieces into explosive loops in this frantic race against the clock.

## Appendix F – Legal Notice

We at TealPoint Software are committed to providing quality, easy-to-use software. However, this product is provided without warranty and the user accepts full responsibility for any damages, consequential or otherwise, resulting from its use.

This archive is freely redistributable, provided it is made available only in its complete, unmodified form with no additional files and for noncommercial purposes only. Any other use must have prior written authorization from TealPoint Software.

Unauthorized commercial use includes, but is not limited to:

- A product for sale.
- Accompanying a product for sale.
- Accompanying a magazine, book or other publication for sale.
- Distribution with "Media", "Copying" or other incidental costs.
- Available for download with access or download fees.

This program may be used on a trial basis for 30 days. The program will continue to function afterwards. However, if after this time you wish to continue using it, please register with us for the nominal fee listed in the program.

Thank you.

### CUSTOMER LICENSE AGREEMENT

YOU ARE ABOUT TO DOWNLOAD, INSTALL, OPEN OR USE PROPRIETARY SOFTWARE OWNED BY TEALPOINT SOFTWARE, INC. CAREFULLY READ THE TERMS AND CONDITIONS OF THIS END USER LICENSE BEFORE DOING SO, AND CLICK BELOW THAT YOU ACCEPT THESE TERMS.

1. License. You are authorized to use the Software Product owned and developed by TealPoint Software, Inc. on a single hand-held computing device on a trial basis for thirty (30) days. If after 30 days you wish to continue using it, you are required to register with TealPoint and pay the specified fee. This license is not exclusive and may not be transferred. You may make one copy of the Software for back-up and archival purposes only.
2. Ownership. You acknowledge that the Software Product is the exclusive property of TealPoint Software, Inc, which owns all copyright, trade secret, patent and other proprietary rights in the Software Product.
3. Restrictions. You may NOT: (a) decompile or reverse engineer the Software Product; (b) copy (except as provided in 1 above) sell, distribute or commercially exploit the Software product; or (c) transfer, assign or sublicense this license.
4. Disclaimer of Warranty and Liability. TEALPOINT MAKES NO WARRANTY, EXPRESS OR IMPLIED, AS TO THE ACCURACY, COMPLETENESS OR FUNCTIONING OF THE LICENSED SOFTWARE, INCLUDING WITHOUT LIMITATION, WARRANTIES OF MERCHANTABILITY OR OF FITNESS FOR A PARTICULAR PURPOSE, ALL OF WHICH TEALPOINT DISCLAIMS. ALL LIABILITY IS DISCLAIMED AND TEALPOINT ASSUMES NO RESPONSIBILITY OR LIABILITY FOR LOSS OR DAMAGES OF ANY KIND, DIRECT OR INDIRECT, INCIDENTAL, CONSEQUENTIAL OR SPECIAL, ARISING OUT OF YOUR USE OF THE LICENSED SOFTWARE, EVEN IF ADVISED OF THE POSSIBILITY THEREOF.
5. Termination. You may terminate this Agreement at any time by destroying your copy(ies) of the Software Product. The Agreement will also terminate if you do not comply with any of its terms and conditions, at which time you are required to destroy your copy(ies) of the Software Product and cease all use.
6. Applicable Law. This Agreement is governed by the laws of the State of California.