

TSMobiles

Terminal Service client for Mobiles

For standard Java phones

Contents

Introduction	3
1. Configuring Remote Desktop on computer	4
2. Installation	5
3. Registration and trial	5
4. Connecting to computer	6
5. Remote desktop control	7
6. Hotkeys usage	9
7. Traffic meter	9
8. Setup menu	10
9. Support	12

Introduction

TSMobiles is an essential mobile client based on Windows Remote Desktop Protocol (RDP) which allows you access to any Windows OS computer via Terminal Service or Windows Remote Desktop through your mobile phone.

Terminal Service (for Windows NT/2000/2003) and **Remote Desktop** (for Windows XP and Windows Vista) are the Microsoft Windows features that let to log-on remotely to your computer and work at it as if you were seated at the local console.

TSMobiles is a light and secure application which is excellent for gaining remote access to computer and working with your business documents, managing files and performing administrative tasks.

Main features of application

- Compatibility with Windows XP Remote Desktop, Windows Vista Remote Desktop, Windows NT/2000/2003 Terminal Service;
- Address book for saving addresses and logins for all your hosts and servers. In addition you can specify the description of host that will help you to find needed host in a large list;
- Advanced security option for assignment of a password at client startup. Address book is encrypted with this main password;
- Direct input mode – you can use the keyboard of your device for direct text input in remote desktop applications.
- Full-screen view and zooming modes. In full-screen mode you can see the remote desktop on the entire screen of your device. Zoomed mode lets you to enlarge desktop and to scroll it to review all fragments in details;
- Desktop orientation feature letting you to turn desktop on your screen for more convenient work with mobile phone;
- Support of predefined hotkeys and assigned device-specific keys for mouse click and open desktop menu;
- Setup options for choosing the default desktop resolution of connected host. You can also specify custom resolution or set desktop resolution for device screen size;
- Support of national keyboard layout and national character sets at text input.

System and Network requirements

Supported devices: Java (j2me) MIDP 2.0

Memory capacity: Not less than 2 Mb of memory with potential possibility to download applications more that 100 Kb size.

Screen size: Not less than 130x170 at 65536 colors.

Network requirements: The mobile device should support GPRS, EDGE or 3G technology. Also the operator of your mobile network should provide you with one of these services. Make sure that your mobile phone has correctly settings for the Internet access point (APN) for applications. **Internet APN** settings (which usually differ from WAP APN) you can get to know from your mobile network operator.

1. Configuring Remote Desktop on computer

Before you start to use TSMobiles you should enable Remote Desktop Connection (for **XP and Windows Vista**) or Windows Terminal Service (for **Windows NT, 2000 server and 2003 server**) on the server you need to connect. For more information on setting this up, please, visit one of the following sites:

For Windows XP Users:

<http://www.microsoft.com/windowsxp/using/mobility/getstarted/remotetintro.mspx>

For Windows 2000 Server Users:

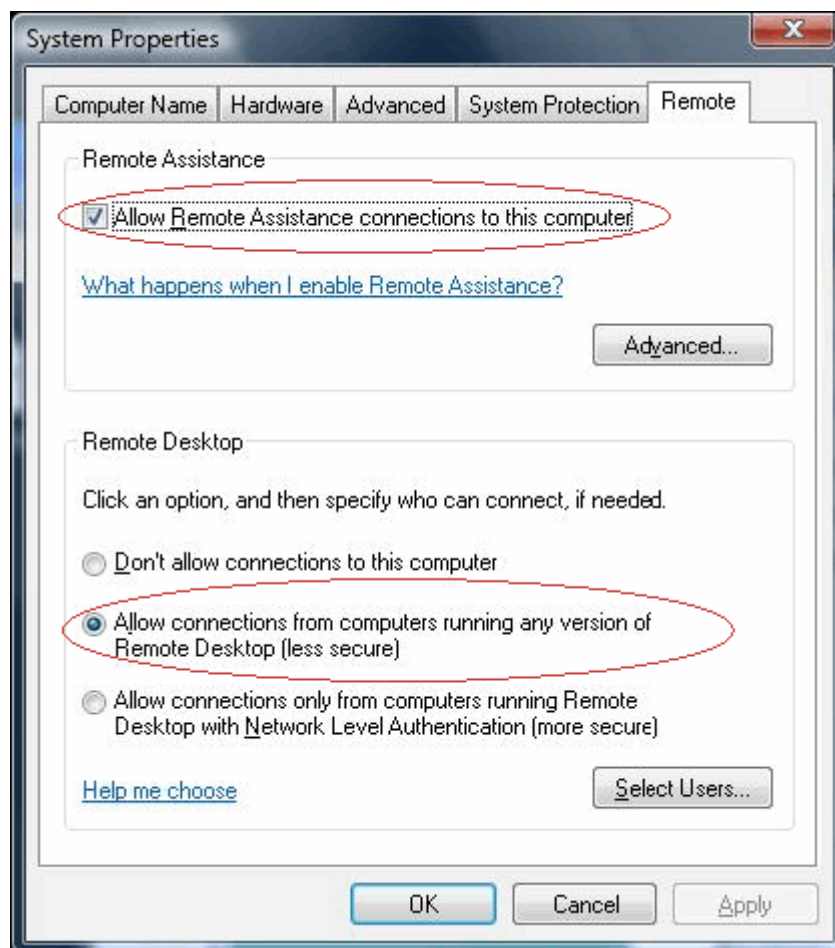
<http://www.microsoft.com/technet/prodtechnol/win2kts/default.mspx>

For Windows Server 2003 Users:

<http://technet2.microsoft.com/windowsserver/en/default.mspx>

For Windows Vista:

<http://www.microsoft.com/windowsvista/features/foreveryone/help.mspx>



For RDP connection you need to make sure that your computer is accessible from the Internet and TCP port 3389 (default Windows RDP port) is opened on firewall or router. If you use ADSL or any other routers, make sure that it is enabling access to your computer from Internet through TCP port 3389 (probably you need to configure port forwarding from external IP address of router to internal IP address of computer). If on your computer installed Windows XP with enabled built-in firewall, or any other firewall software, you should open TCP port 3389 for incoming connections.

If you have a problem configuring your router/firewall, you can get more help at http://www.portforward.com/english/applications/port_forwarding/RemoteDesktop/RemoteDesktopindex.htm.

You can check if your computer has the direct access from Internet if try to establish connection to the RDP port by using 'telnet' utility from other computer which has an access to Internet and sits outside of your local network. You can ask your friend try to do it for you from his computer. Following actions should be performed:

1. Click on '**Start**' button and select '**Run**' option.
2. Enter '**cmd.exe**'. into appeared string and press **OK** button.
3. At the command prompt enter "telnet 1.2.3.4 3389". Use all commands without double quotes. Instead of 1.2.3.4 use external Internet IP address of your computer.

Note: This is only the test for opened port and nobody can access your computer this way.

To fast determination of Internet IP address of your computer go to the following link: <http://www.whatismyip.com>

2. Installation

You can download the client directly to your mobile device. The WAP download location is: **wap.shapeservices.com**

Open the page 'Download' and choose right client module for your device.

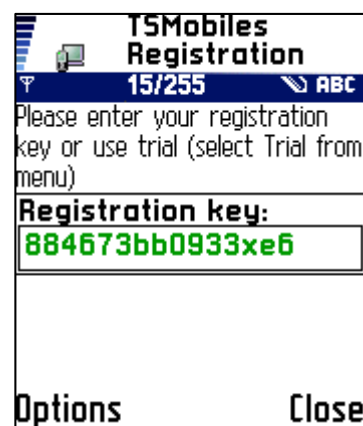
If for some reason you can't download the client module directly, or error occurs at download, you can download files from our site. Open the page 'Download' in your computer browser:

<http://www.shapeservices.com/en/products/details.php?product=tsm&platform=midp2>

Download files of the client into separate directory on your computer and install them on your device using special management software for your device. More details about installation of Java applications on mobile phone you can find in user manual of your device, or you can get to know it on Web site of device manufacturer.

3. Registration and trial

After the first launch of **TSMobiles Java phones** you will be asked to insert the registration key, which you have received with the purchase of the program.



If you want to use **TSMobiles** in trial mode, choose '**Trial**' from the menu.

Note: You can use full-functional trial during 7 days or download a full-functional commercial version with unlimited access. Using trial version there could appear the message "Unregistered" and menu item 'Keyboard' will be disenabled.

If you want to register **TSMobiles** insert the registration key in the corresponding field and select '**Register**' menu item. If you have inserted the right registration code, the program will register and there will be no need to insert the registration key once more. If the registration key is wrong, the program will show the corresponding message and will not be registered.

Advice: If you receive "**Cannot access registration server to check program availability**" error message, you should check APN entered in your device settings. Probably you are using wrong APN or don't have access to it or your carrier has closed an access to Internet APN for some reason. TSMobiles requires that you use an Internet access point name (APN) instead of a wireless access point (WAP). Contact your carrier and check if you are able to use their APN. If you are already using the APN, check that your Internet APN settings are correct.

If you delete the program and then install it once more or reinstall the program to another mobile device, your registration key will not be valid any more.

If you have changed your mobile device for a new one, please contact tsmsupport@shapeservices.com to reset your registration key in this case.

You can also easily reset the registration key for new registration using the online reset form: <http://www.shapeservices.com/en/licenceman/standalone.php>

4. Connecting to computer

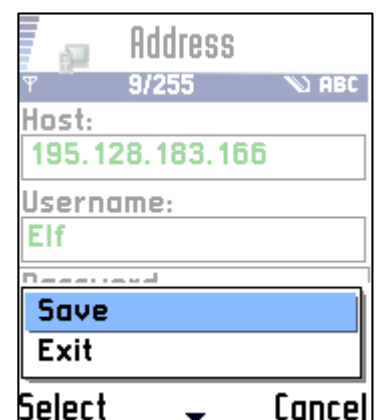
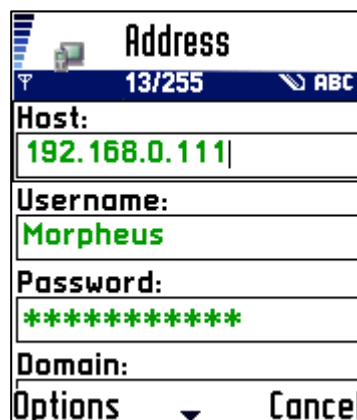
At **TSMobiles** launch the window with address book opens. The address book contains the list of servers which you used to connect to.

At first start the address book is empty. You should select the menu item '**New address**' to add a new record into address book.

In the new record dialog you should enter the name (usually full Internet name, for example host.company.com) or IP address of host to which you want to connect. Then you need to enter the user name that exists on this host and password. In most cases the field '**Domain**' is not filled.

In the '**Description**' field you can specify a short description text of host, which will help you to find a certain host in large list of hosts in address book. When description is not empty the host description and host address will be displayed in list of addresses. If the description field remains unfilled, host address and user name (if it was defined) will be displayed.

By default the application will connect through standard RDP port 3389, but you can change the port value for your host. Specify the port number at the end of host address using the colon mark (For example: **195.128.183.166:3390**). Please, save your address choosing '**Save**' from the menu.



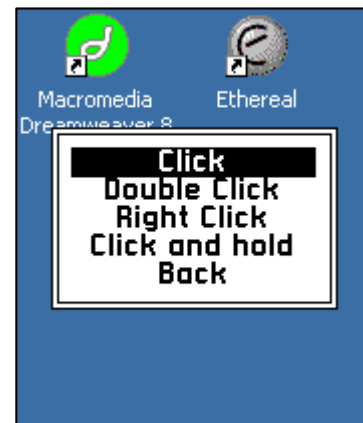
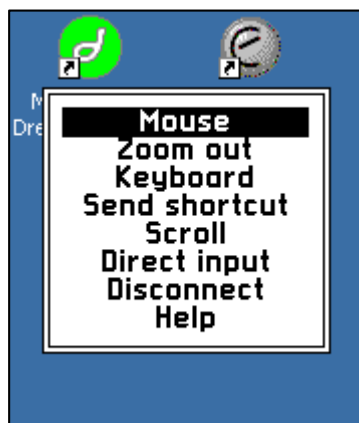
You can freely connect to this address pressing central button of Joystick or choosing '**Connect**' from the menu.

5. Remote desktop control

After a successful connection to the remote host, you will see the remote desktop on device screen. You can control the remote desktop by using both onscreen menu and desktop mode hotkeys.

Following options are available in main menu:

- **Mouse** - This menu item is used to perform left, right, double clicks of mouse, click and hold.

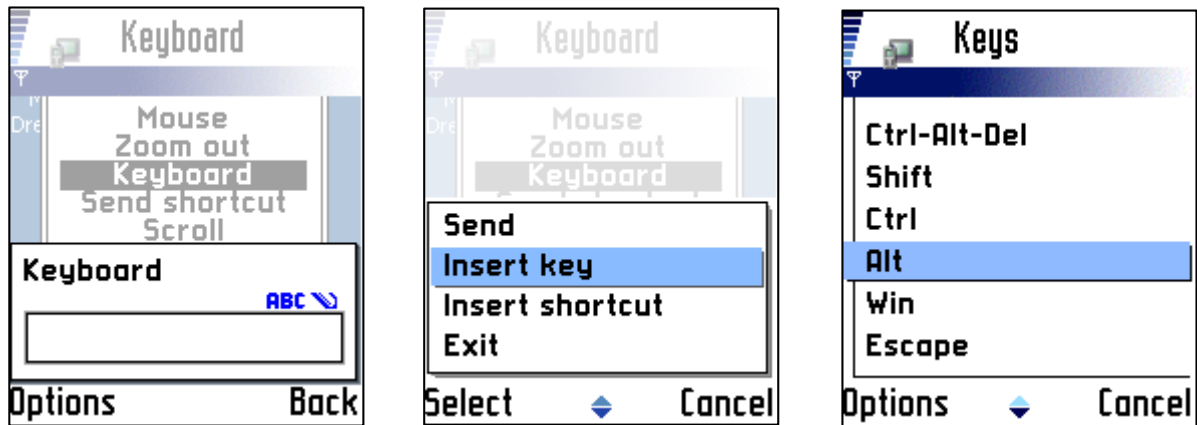


You can use softkey <Select> like left click of mouse, double quick click on <Select> like double left clicks of mouse.

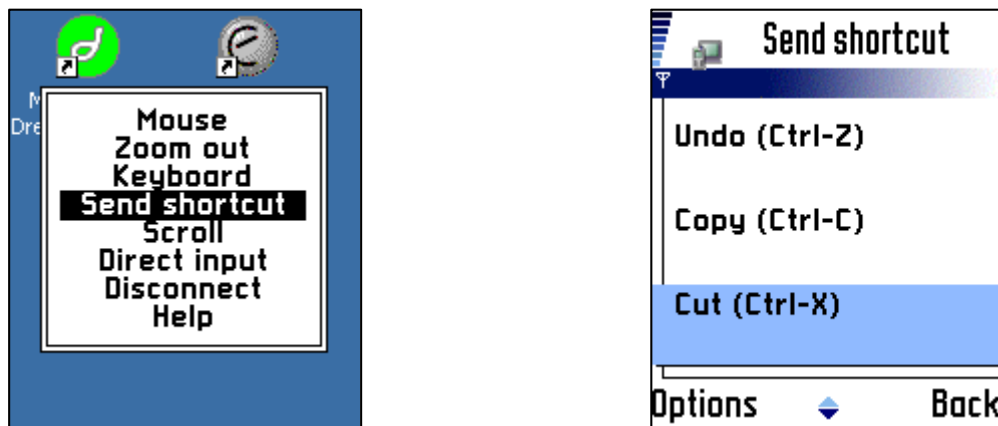
Note: 1. To move mouse cursor you should use Right, Left, Up and Down navigation keys or joystick on your device.
2. To get more information about softkey <Select> please go to paragraph 8. **Setup menu: Assign keys.**

- **Zoom in/ Zoom out** – Given menu items serve to enlarge/decrease the view of current desktop. **Zoom in** item is available if desktop size is larger then the device's screen. If the desktop resolution is equal to screen's size **Zoom in** mode won't be work. The resolution of desktop can be set in **Setup/Desktop resolution**.
- **Keyboard** - You can enter the text that will be transferred to remote host just like you enter it from a keyboard. Along with the plain text, you can also insert control keys and shortcuts (E.g. Alt+F4). For correct text input in your national encoding you should set the corresponding national keyboard layout choosing the proper one from '**Setup/Keyboard layout**' section. You should also switch to corresponding language on your computer just like you usually do if typing in different languages working at the local console.

Note: In order to transfer # symbol, you should enter it twice (##) as # key can be involved in other control key combinations as the first symbol (E.g. my password #Enter)



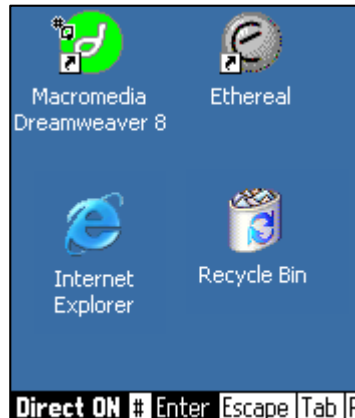
- **Send shortcut** – You can select a shortcut to send it to remote host, like entering it from keyboard.



- **Scroll** – You can scroll the desktop on your screen if desktop size larger than your screen.
- **Direct input** – If enabling this option, symbols which you enter on your device keyboard will be immediately displayed on the desktop. This option is disabled by default; it can be used on phones with full keyboard only (E.g. Nokia 9300/9500). Anyway all phones support the direct input of numbers. This mode can also be activated from control keys menu which is called up by pressing # key. While 'Direct input' mode is enabled a text cursor will be displayed on your screen instead of a mouse cursor. You can move it along your screen with navigation keys or joystick just like usual text cursor.
- **Disconnect** – You will be disconnected from the host, choosing this menu item.
- **Help** – A short description of desktop mode control keys is available under this menu option.

6. Hotkeys Usage

Pressing of # key will call up the menu with control keys.



You can select the control key or a combination of control keys and send them to desktop of the computer.

Following hotkeys are available in program:

- [5]** - Menu Key
- [1]** - Left mouse click *
- [2]** - Left double click *
- [3]** - Right click*
- [6]** - Left click and hold *

* If not in cursor mode a key can be pressed to switch to cursor mode.

- [4]** - Selecting and sending keyboard shortcut from list.
- [8]** - Zoom In.
- [9]** - Zoom Out.
- [*]** - Turning on scroll mode.
- [0]** - Selecting and sending keys sequence (entering text string).
- [#]** - Opening/Closing Control keys menu

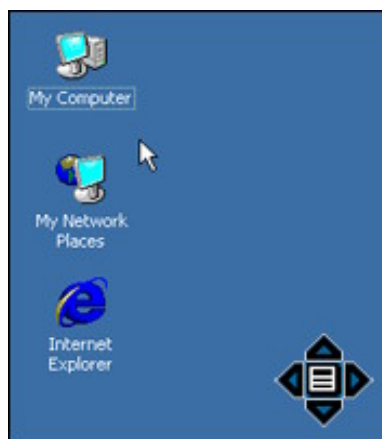
[SelectKey] * - [Enter]

* **SelectKey** is usually the central navigation key of Joystick on your device. The work of this key may differ depending on control mode which is currently in use. That is in 'Direct input mode' this key performs Enter command while in mouse cursor mode pressing of this key means a mouse click.

Touchscreen usage

Furthermore our application supports touchscreen (for the mobile devices with touchscreen support, for example, Sony Ericsson P9xx).

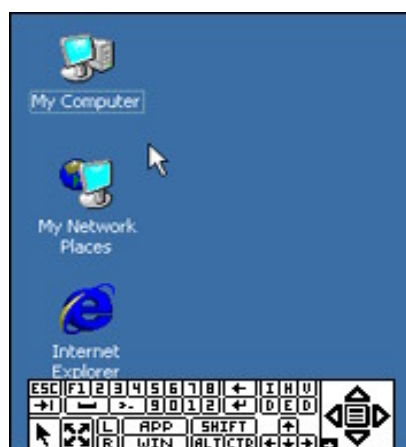
One stylus touch on the screen and you can see the navigation icon.



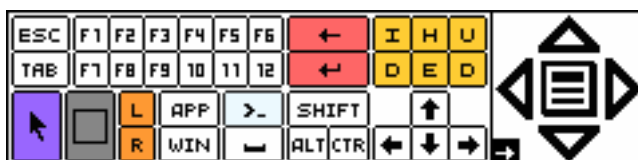
Holding the stylus down on the central icon and the menu with keys for control the desktop will appear on your mobile screen. You can choose such functions as '**Mouse**', '**Zoom in**', '**Zoom out**', '**Full desktop**', '**Keyboard**', '**Send shortcut**', '**Scroll mode on**', '**Help**' and '**Back**'. Also you are able to move through the desktop via navigation points – left, right, up and down. You can move the navigation icon wherever is it more suitable for you.

The stylus for the phone is as useful as the mouse for the computer. One stylus touch works like mouse click, double stylus touch works like double mouse click.

You can use **Virtual keyboard** to manage the remote screen faster and more convenient. To open the keyboard window click the center of the icon in the screen bottom right. .



Use stylus to operate with text, zoom in and out the screen and etc. This functionality also available through the **Hot keys** menu.



Buttons' meanings are as follows:

Violet button stands for entering the **scroll mode**

Gray button – zoom in and out

Orange group – Left and Right mouse buttons

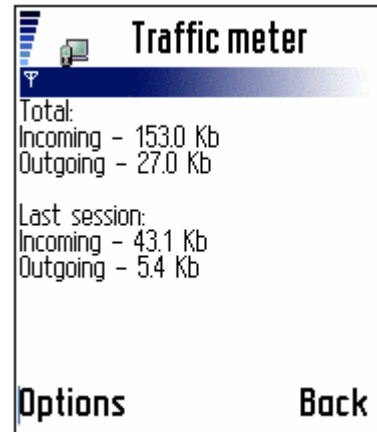
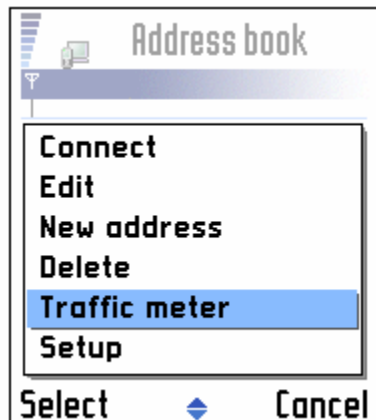
Yellow group – Insert, Home, Page Up, Delete, End, Page Down respectively

Pink group – Backspace and Enter respectively

- **Click&Hold** –Put arrow cursor on an object and select click&hold from menu. Then choose click operation to drop the object.

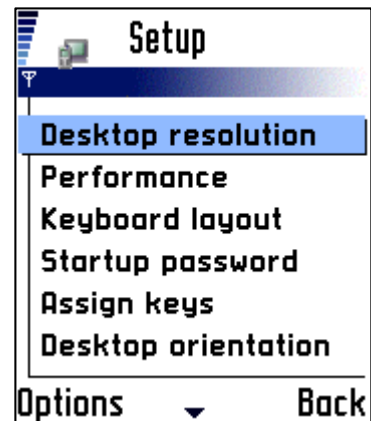
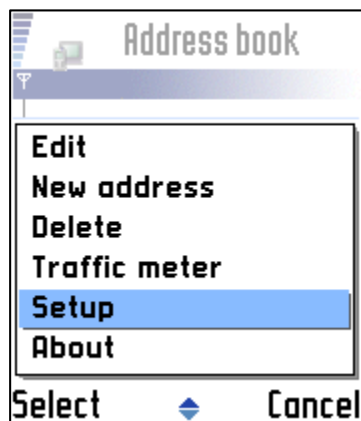
7. Traffic meter

You can look through your traffic meter of last session and total traffic. Choose '**Traffic meter**' from menu. Selecting '**Clear**' in '**Options**' menu item you can clear traffic information.



8. Setup menu

You can change settings of application in '**Setup**' menu. This menu opens from the main window of the client after the application started:



There are following subsections in Setup menu:

- **Desktop resolution**

You can set the remote desktop resolution using this item. There are several predefined resolution modes, resolution mode which is equal to device screen size and custom mode where you can specify the width and the height of remote desktop. For devices with small screen the smallest resolution mode is set by default.

Note: The increase of remote desktop resolution requires adequate memory and high CPU performance. The traffic will increase at increasing desktop resolution. It is recommended to increase size of remote desktop only for powerful enough devices.

▪ Performance

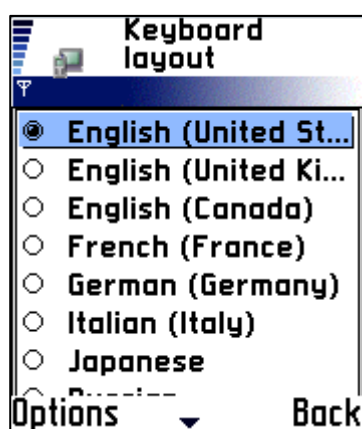
This item defines a working mode of remote desktop.

Bitmap caching (by default this option is enabled). If there is insufficient memory on your device you can get error while accessing remote desktop. Disabling of a bitmap caching saves memory, but traffic will increase in this case.

▪ Keyboard layout

Use this item to assign default keyboard layout at connecting to remote desktop.

Starting to use the application for correct text input in your national encoding you should set the corresponding national keyboard layout which you use on your computer.



▪ Startup password

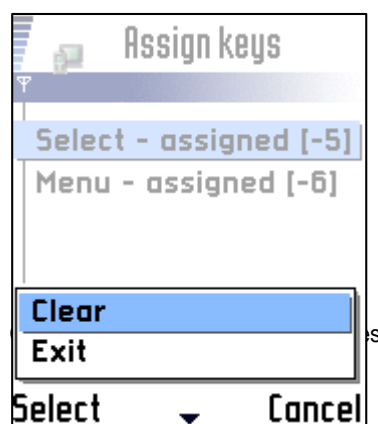
You're able to set a password which will be asked at program start. Your address book will be encrypted with this password, so nobody could access the program and use your address book. This option is very useful in case of device loss as it prevents publishing of your confidential data.

Note: Please keep in mind your password. If you forget it you can reset the settings and your password wouldn't be asked after you enter the program, but your address book will be empty.

▪ Assign keys

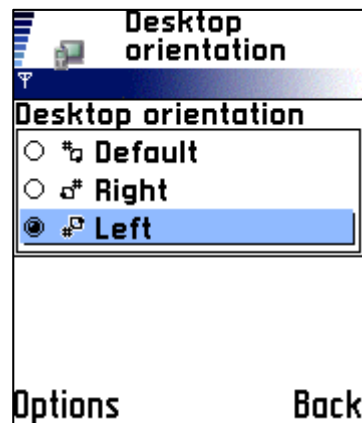
You can assign keys for <Menu> and <Select> client functions that will be used in full screen mode. Usually these keys are assigned automatically at first start of the client. But you can re-assign these functions to other device keys.

For resetting assigned key, choose the function in list and press the key 'Clear'. To assign key you should select client function in the list, press the device key which you want to assign for this function.



▪ Desktop orientation

You can change desktop orientation for more convenient work with mobile phone. You can turn the desktop to the left or to the right on 90 degrees, or keep default orientation.



▪ Screen mode

You can define the screen mode of your device at this section of Setup menu. Full screen option (enabled by default) switches the full screen mode of device hiding device information panels at the top and at the bottom of screen. It is not allowed to use the screen keyboard on some devices so you can turn off full screen mode for showing the device specific controls.

9. Support

SHAPE Services provides online information to help your troubleshooting problems. You can download software updates and submit your problems online.

Looking for update or trial installation? See Download Page:

<http://www.shapeservices.com/en/products/details.php?product=tsm&platform=midp2>

If you need further assistance after reading this manual, please fill out our Support form:

http://www.shapeservices.com/en/support/support.php?form=tsm_midp&platform=midp2

Alternatively, you can send us an email at tsmsupport@shapeservices.com

Our Support Team will answer your email within two business days.

We will be glad to answer all your questions.