



Exam : 070-624

Title : Deploying and Maintaining Vista Client and
Office System 2007 Desktops

Ver : 04-06-09

QUESTION 1

Some of the computers in your company run Microsoft Office 2003. Other computers run Microsoft Office 2007. Users report that when they save documents on computers that run Office 2007, users on computers that run Microsoft Office 2003 are unable to edit those documents. You need to ensure that users on computers that run Office 2003 are able to edit Office 2007 documents. What should you do?

- A - Add the Office Compatibility Pack to the computers that run Office 2007.
- B - Add the Office Compatibility Pack to the computers that run Office 2003.
- C - Install Office 2003 Service Pack 2 on the computers that run Office 2003.
- D - Install MSXML 6.0 on computers that run Microsoft Office 2003.

Answer: B

QUESTION 2

You are planning to upgrade to Microsoft Office 2007. You need to identify documents that are not compatible with Office 2007. What should you do?

- A - Run the OMPM File Scanner tool.
- B - Run the Application Compatibility Analyzer.
- C - Run the Office File Converter.
- D - Run the Office Customization Tool.

Answer: A

QUESTION 3

You need to install Microsoft Office 2007 on computers in the Sales department and computers in the Accounting department. The Sales department requires only Microsoft Word and Microsoft Excel. The Accounting department requires only Microsoft Excel and Microsoft InfoPath. You need to deploy Office 2007 to computers in the Sales department and the Accounting department. You create a shared folder named \\Server1\Office. What should you do next?

- A - Copy the Microsoft Office 2007 installation files to the \\Server1\Office folder. Create an .MSP file for each department. Create a script for each department that uses the appropriate .MSP file.
- B - Copy the Microsoft Office 2007 installation files to the \\Server1\Office folder. Create an .MST file for each department. Create a script for each department that uses the appropriate .MST file.
- C - In the \\Server1\Office folder, create a folder for each department. Copy the Microsoft Office 2007 installation files to each folder. Create a CUSTOM.MSP file in each folder. Instruct users to run setup from the appropriate folder.
- D - In the \\Server1\Office folder, create a folder for each department. Copy the Microsoft Office 2007 installation files to each folder. Create a CUSTOM.MST file in each folder. Instruct users to run setup from the appropriate folder.

Answer: A

QUESTION 4

Your company is deploying Windows Vista. You create a reference computer and capture an

image of that computer by using the ImageX utility.

You need to modify the reference computer image to meet the following requirements:

Set the Internet Explorer home page to your companys home page.

Remove Games from the image.

Add a new network card device driver.

You must accomplish this task by using the least administrative effort.

What should you do?

A - Use the ImageX utility to mount the image. Copy an unattended setup answer file to the \Windows folder in the image.

B - Use the ImageX utility to mount the image. Apply an unattended setup answer file to the image.

C - Restore the image of the reference computer. Modify the configuration of the reference computer. Recapture an image of the reference computer.

D - Restore the image of the reference computer. Copy an unattended setup answer file to the \Windows folder on the reference computer. Recapture an image of the reference computer.

Answer: B

QUESTION 5

You are deploying Microsoft Office 2007 to computers that run Windows Vista. The computers are configured to support the English, Spanish, and French languages.

Users report that only the English language is displayed in Office 2007 applications.

You need to ensure that Office 2007 displays the English, Spanish and French languages.

What should you do?

A - Add the Microsoft Office 2007 Single Language Packs to the root of the Office 2007 installation share. Instruct users to run the Office 2007 Setup program.

B - Create a subdirectory for each language on the Office 2007 installation share. Add the Office 2007 Single Language Packs to the appropriate subdirectory. Edit the config.xml file on the installation share. Instruct users to run the Office 2007 Setup program.

C - Use the PKGMGR command to add the Windows Vista language packs to the client computers. Edit config.xml file on the installation share. Instruct users to run the Office 2007 Setup program.

D - Use the PKGMGR command to add the Windows Vista language packs to the installation source for Windows Vista. Edit the unattend.xml file in the Windows Vista installation source. Instruct users to run the Office 2007 Setup program.

Answer: B

QUESTION 6

You are installing Microsoft Office 2007. You configure two distribution points. One distribution point is named \\Server1\Office2007. The other distribution point is named \\Server2\Office 2007. You need to ensure that if one distribution point becomes unavailable, Microsoft Office 2007 will use the other distribution point. What should you do? (Each correct answer presents a complete solution. Choose two.)

A - On each distribution server, create an administrative installation point.

B - On the root of each distribution point, create a shortcut which points to the additional

distribution point.

C - Create a Custom.MSP file.

D - Configure the Config.XML file.

Answer: C, D

QUESTION 7

You plan to deploy Microsoft Office 2007 using a script. You need to create a distribution share for Microsoft Office 2007. You create a shared folder on a server. What should you do next?

A - Run the Microsoft Office 2007 installation program with the /config switch.

B - Run the Microsoft Office 2007 installation program with the /admin switch

C - Install Microsoft Office 2007 on a reference computer. Copy the MSOCache folder to the root of the installation share.

D - Copy the installation files from the source media to the root of the shared folder.

Answer: D

QUESTION 8

You use the Application Compatibility Toolkit (ACT) to analyze computers before deploying Windows Vista. You create a data collection package which contains the Internet Explorer Compatibility Evaluator and the Inventory Collector. Company policy requires that all software package installation be done during non-peak hours. You need to ensure the data collection package is deployed to computers. What should you do?

A - Create a user logon script. Add the data collection package to the logon script.

B - Create a computer software installation policy in a Group Policy object.

C - Create an SMS Package which contains the data collection package. Advertise the package to install at a specified time.

D - Create a user software installation policy in a Group Policy object.

Answer: C

QUESTION 9

You deploy Windows Vista on 500 computers in your network. You discover that one of your applications does not function correctly in Windows Vista. You also discover that the application requires Windows XP Service Pack 2. You need to ensure that the application functions correctly in Windows Vista. You must accomplish this task with the least administrative effort. What should you do?

A - Disable the User Account Control: Virtualize file and registry write failures to per-user locations security option.

B - Set the Compatibility mode to Windows XP (Service Pack 2) on the properties of the application properties

C - Use the Compatibility Administrator to create a new application fix that sets the Operating System Mode to Microsoft Windows XP (SP2).

D - Use the Compatibility Administrator to create a new application fix that sets the WinXPSP2VersionLie compatibility mode.

Answer: C

QUESTION 10

You plan to upgrade computers to Windows Vista. One of the applications uses a custom Windows logon dialog box. You use the Application Compatibility Toolkit (ACT) to collect compatibility information on the computers in your network. You need to ensure that there are no known compatibility issues with the application. What should you do?

- A - Examine the Vista Compatibility Evaluation Report
- B - Examine the Update Compatibility Evaluation Report
- C - Examine the Impact Analyzer Reports
- D - Examine the Impact Application Reports

Answer: A

QUESTION 11

You plan to upgrade computers in the Sales department to Windows Vista. You need to generate a list of applications that are installed on computers in the Sales department. You install the Application Compatibility Toolkit (ACT) on your computer. What should you do next?

- A - Deploy the Internet Explorer Compatibility Evaluator
- B - Deploy the User Account Control Compatibility Evaluator
- C - Deploy the Update Compatibility Evaluator
- D - Deploy the Vista Compatibility Evaluator
- E - Deploy the Inventory Collector

Answer: E

QUESTION 12

You upgrade computers on your network to Windows Vista. You discover that one of the applications is not compatible with Windows Vista. You use the Compatibility Administrator to create a custom application compatibility database that contains an Application Fix. You need to install the Application Fix on the Windows Vista computers. What should you do?

- A - Create a script that installs the Application Compatibility Toolkit.
- B - Deploy the Update Compatibility Evaluator.
- C - Create a script that uses the SDBINST command.
- D - Disable User Account Control.

Answer: C

QUESTION 13

You plan to upgrade computers to Windows Vista. The computers will be used to access a Web application named App1. You install the Application Compatibility Toolkit (ACT) on a client computer. You need to identify compatibility issues with App1. What should you do?

- A - Deploy the Internet Explorer Compatibility Evaluator
- B - Deploy the User Account Control Compatibility Evaluator
- C - Deploy the Update Compatibility Evaluator

- D - Deploy the Vista Compatibility Evaluator
- E - Deploy the Inventory Collector

Answer: A

QUESTION 14

You install the Application Compatibility Toolkit (ACT) on a client computer named Client1. You configure the ACT to use an existing SQL Server instance on server named Server1. You need to ensure that the ACT Log Processing Service can access the database on Server1. What should you do?

- A - Configure the ACT Log Processing Service to run using the Local Service account.
- B - Grant the Server1\Network Service account read and write access to the database.
- C - Grant the Client1 computer account read and write access to the database.
- D - Create a new SQL Server Account named ACTLog. Grant ACTLog read and write access to the database.

Answer: C

QUESTION 15

You plan to upgrade to Windows Vista. You discover that an application named App1 is not compatible with Windows Vista and cannot be modified to run on Windows Vista. App1 requires Windows XP Service Pack 2. You verify that the Windows XP Service Pack 2 compatibility mode fails to allow the application to run. You need to ensure that users can use App1 while running Windows Vista. What should you do?

- A - Configure the user's computers to dual boot between Windows XP Service Pack 2 and Windows Vista.
- B - Create a virtual machine that runs Windows XP Service Pack 2. Deploy the virtual machine to the Windows Vista computers.
- C - Copy the Windows XP Service Pack 2 installation files to the WinSxS folder. Copy the App1 executable files to the WinSxS folder.
- D - Create a custom Program Information File (PIF) for the App1 executable files.

Answer: B

QUESTION 16

You create a reference computer image using Business Desktop Deployment (BDD) Workbench. You add applications to the reference computer build. You build the reference computer using BDD Lite Touch Installation (LTI). You discover that the reference computer fails to build correctly. You also discover that the applications are installing in the incorrect order. You need to ensure that the reference computer builds successfully. What should you do?

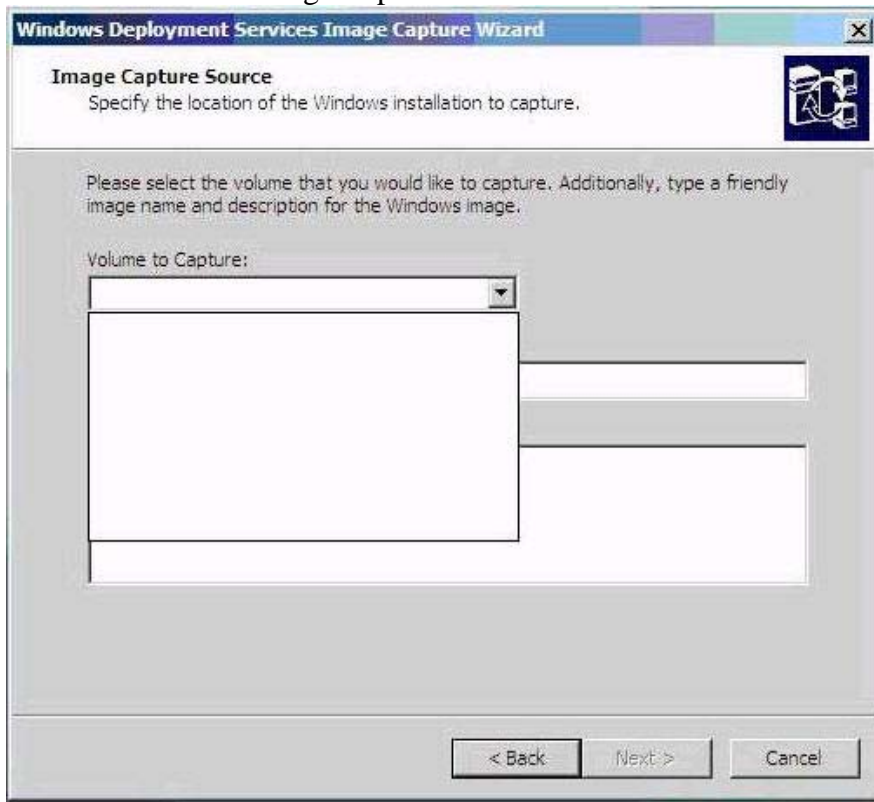
- A - Remove all applications from the build. Re-add the applications in the order from last installed to first installed.
- B - Edit the unattend.xml file in the build properties.
- C - Edit the customsettings.ini file in BDD Workbench
- D - Modify the task sequence in the build properties.

Answer: D

QUESTION 17

You create a reference computer image using Windows Deployment Services (WDS). You run sysprep.exe on the reference computer. You restart the reference computer and network boot using the WDS Capture image.

You discover that you are unable to select a volume to capture using the WDS Image Capture Wizard. The WDS Image Capture Wizard is shown in the exhibit.



You need to ensure you can capture an image of the reference computer using the WDS Image Capture Wizard.

What should you do?

- A - Restart the reference computer. Create a folder named sysprep in the root of the system volume. Add the unattend.xml file to the sysprep folder. Run sysprep /oobe on the reference computer.
- B - Restart the reference computer. Run sysprep /generalize /oobe on the reference computer.
- C - Restart the reference computer. Run sysprep /audit /oobe on the reference computer.
- D - Restart the reference computer. Add the autoattend.xml file to the root of the system volume. Run sysprep /audit on the reference computer.

Answer: B

QUESTION 18

You use Business Desktop Deployment (BDD) Workbench to create custom builds of Windows PE. You need to ensure that the Windows PE builds contain the company logo. What should you

do?

- A - Use the ImageX command to mount each build of Windows PE. Add the company logo to the root of the build of Windows PE.
- B - Customize the WINBOM.INI file to include the path to the company logo.
- C - Include the path to the company logo in the properties of the master build in BDD Workbench.
- D - Include the path to the company logo in the WINPESHL.INI file.

Answer: C

QUESTION 19

You use Business Desktop Deployment (BDD) Lite Touch Installation (LTI) to deploy Windows Vista. Computers in the Marketing department do not support network boot using PXE. You need to perform LTI of Windows Vista on computers in the Marketing department. What should you do?

- A - Use Systems Management Server to create an OSD Deploy CD.
- B - Use Windows Deployment Services to create a WDS Image Deploy CD.
- C - Use Windows Automated Installation Kit to create a Windows PE CD.
- D - Use the BDD Workbench to create a deployment CD.

Answer: D

QUESTION 20

You use Business Desktop Deployment (BDD) Workbench to create a reference computer build. You need to include Microsoft Office 2007 in the reference computer build process. What should you do?

- A - Copy the application source files to the application folder of the distribution share.
- B - Use the BDD Workbench to add the application to the build.
- C - Run the Microsoft Office 2007 installation program with the /admin switch.
- D - Run the Microsoft Office 2007 installation program with the /config switch.

Answer: B

QUESTION 21

You create a Windows Vista build using Business Desktop Deployment (BDD) Workbench that will install an application that uses an MSI installation package. You need to ensure that the application installs without displaying a user interface. You add the application MSI package to the Command line parameter of the New Application Wizard. What should you do next?

- A - Include the Passive command line switch in the application command line.
- B - Include the Quiet command line switch in the application command line.
- C - Include a custom.xml file in the application source folder.
- D - Include an autounattend.xml file in the application source folder.

Answer: B

QUESTION 22

You use Business Desktop Deployment (BDD) Workbench to deploy Windows Vista. You use

Windows System Image Manager to create an unattended setup installation file named unattend.xml. You need to include the unattend.xml file in your Windows Vista build. What should you do?

- A - Rename the unattend.xml file to autounattend.xml. Copy the autounattend.xml file to the folder that contains the Windows Vista build.
- B - Copy the unattend.xml file into the folder that contains the Windows Vista build. Overwrite the existing unattend.xml.
- C - Copy the unattend.xml file to the root of the Control directory.
- D - Rename the unattend.xml file to autounattend.xml. Copy the autounattend.xml file to the Control directory.

Answer: B

QUESTION 23

You install the Business Desktop Deployment (BDD) Workbench on a computer named Client1. You create a distribution point using a shared folder named Images on a server named Server1. You need to ensure that users can install builds available from the \\Server1\Images deployment point.

You also need to ensure that deployment engineers can make configuration changes to builds that are available from the \\Server1\Images deployment point. You must accomplish this task while maintaining the highest possible security on the deployment point.

What should you do?

- A - Grant all users Modify access to the deployment point.
- B - Grant deployment engineers Full Control and users Modify access to the Deployment point.
- C - Grant deployment engineers Modify and users Read access to the deployment point.
- D - Grant deployment engineers Full Control and users Read access to the deployment point.

Answer: C

QUESTION 24

You use Business Desktop Deployment (BDD) to upgrade 500 computers from Windows XP to Windows Vista. You install and configure BDD Workbench on a Server named Server1. You create a deployment solution which includes a distribution share and several builds. You add a new Server named Server2 to increase deployment capacity.

You need to duplicate the deployment solution from Server1 on Server2.

What should you do?

- A - Copy the distribution folder from Server1 to Server2. Update the builds to use the distribution folder on Server2
- B - Backup the System State on Server1. Restore the System State on Server2.
- C - Install BDD Workbench on Server2. Configure BDD Workbench on Server2 to use the distribution share on Server1.
- D - Install Systems Management Server (SMS) on Server1 and Server2. Configure both servers as SMS distribution points.

Answer: A

QUESTION 25

You plan to deploy Windows Vista to computers in your network.

One of your desktop deployment engineers is responsible for the following tasks:

Building reference computer images

Ensuring that devices will function correctly in Windows Vista.

Creating Lite Touch deployment points.

Creating custom builds of Windows PE that run scripts.

Developing fixes for non Vista-compatible applications

You need to create a technician computer for the desktop deployment engineer.

What should you do? (Each correct answer presents part of the solution. Choose three.)

A - Install the Application Compatibility Toolkit

B - Install the User State Migration Tool

C - Install Business Desktop Deployment Workbench

D - Install the Windows Automated Installation Kit

E - Install Windows Deployment Services

F - Install the Systems Management Server Operating System Deployment Feature Pack

Answer: A, C, D

QUESTION 26

You use Business Desktop Deployment (BDD) to create builds of Windows PE. Computers in your Sales department require non-standard network adapter drivers. You add the non-standard device drivers to the Out-of-Box Drivers folder. You then create a build of Windows PE. You discover that you are unable to access the network when you boot computers in your Sales department when using Windows PE. What should you do?

A - Check the Include all network drivers check box in the properties of the build. Update the build.

B - Copy all non-standard drivers to the Out-of-Box Drivers folder.

C - Use ImageX to mount the Windows PE build. Add the drivers to the root of the Windows PE build.

D - Create an Out-of-Box Drivers folder on a USB Flash drive (UFD). Add the drivers to the folder on the UFD. Ensure the UFD is inserted into computers when they are booted using Windows PE.

Answer: A

QUESTION 27

You create a distribution point using Business Desktop Deployment (BDD) Workbench to install Windows Vista and Microsoft Office 2007. Your company security policy requires that all Microsoft Office 2007 updates be installed as part of the Office 2007 installation process. You need to ensure that your distribution point meets the requirements of the company security policy. What should you do?

A - Create a folder named Updates in the Microsoft Office 2007 distribution folder. Copy all updates to this folder.

B - Create a folder named Patches in the Microsoft Office 2007 distribution folder. Copy all

updates to this folder.

C - Configure a Group Policy Object which ensures that all computers are configured to use Microsoft Update and install updates automatically.

D - Install Windows Server Update Services on the distribution server. Configure an AutoDeployment rule in Windows Server Update Services.

Answer: A

QUESTION 28

You use Systems Management Server (SMS) Operating System Deployment (OSD) Feature Pack to upgrade computers running Windows 2000 to Windows XP. You plan to use the SMS OSD to upgrade computers running Windows XP to Windows Vista. You install the SMS OSD Feature Pack Update on your SMS Site Server. You discover that you can not add reference computer images created before you installed the SMS OSD Feature Pack Update to the SMS Console. You need to ensure that you can deploy reference computer images created before you installed the SMS OSD Feature Pack Update.

What should you do?

A - Register the WIMFIL.T.DLL file on the SMS Site Server.

B - Use the SMS OSD to recapture images of the reference computers.

C - Install the Windows Automated Installation Kit on the SMS Site Server.

D - Install Windows Deployment Services on the SMS Site Server.

Answer: B

QUESTION 29

You use Systems Management Server (SMS) Operating System Deployment (OSD) Feature Pack to upgrade computers from Windows XP to Windows Vista. You use the User State Migration Tool (USMT) to migrate user state from Windows XP to Windows Vista. You create an Operating System Package to deploy Windows Vista. You need to ensure that the User State Migration Tool captures user state during the upgrade to Windows Vista. What should you do?

A - Configure the Validation phase actions to include the USMT source files and scanstate command.

B - Configure the State Capture phase actions to include the USMT source files and scanstate command.

C - Configure the Preinstall phase actions to include the USMT source files and scanstate command.

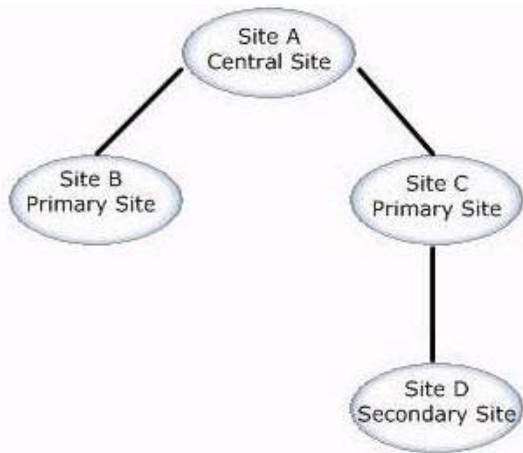
D - Configure the Postinstall phase actions to include the USMT source files and scanstate command.

E - Configure the State Restore phase actions to include the USMT source files and scanstate command.

Answer: B

QUESTION 30

You plan to deploy the Systems Management Server (SMS) Operating System Deployment (OSD) Feature Pack. Your network is configured as shown in the exhibit.



You will use the SMS OSD Feature Pack to deploy all operating systems.

You need to ensure the SMS OSD Feature Pack can be managed with the least administrative effort.

What should you do?

- A - Plan to install the SMS OSD in Site A
- B - Plan to install the SMS OSD in Site B
- C - Plan to install the SMS OSD in Site C
- D - Plan to install the SMS OSD in Site D

Answer: A

QUESTION 31

You plan to install the Systems Management Server (SMS) Operating System Deployment (OSD) Feature Pack. You need to ensure the SMS OSD is installed correctly. What should you do?

- A - Plan to install the SMS OSD on the Primary Site Server.
- B - Plan to install the SMS OSD on the Secondary Site Server.
- C - Plan to install the SMS OSD on the Distribution Point.
- D - Plan to install the SMS OSD on the Reporting Point.

Answer: A

QUESTION 32

You use the Systems Management Server (SMS) Operating System Deployment (OSD) Feature Pack to deploy Windows Vista. You use the Business Desktop Deployment (BDD) Workbench to create a new reference computer build. You capture an image of the reference computer using the ImageX command. You add the reference computer image to SMS. You attempt to deploy the reference computer image using a package. The reference computer image fails to install. You need to ensure that you can deploy the reference computer image using the SMS OSD Feature Pack. What should you do?

- A - Register the WIMFIL.T.DLL file on the SMS Site Server.
- B - Recreate the reference computer image using the ImageX command with the /boot switch.
- C - Install the Windows Advanced Installation Kit on the SMS Site Server.
- D - Recreate the reference computer image using the SMS OSD Image Capture Wizard.

Answer: D

QUESTION 33

You plan to use the Systems Management Server (SMS) Operating System Deployment (OSD) Feature Pack to upgrade computers from Windows XP to Windows Vista. You need to ensure that Windows XP clients can execute scripts during all phases of the operating system deployment. What should you do?

- A - Register the WIMFLTR.DLL file.
- B - Install the NET Framework 2.0.
- C - Install the NET Framework 1.1.
- D - Install MSXML 6.0.

Answer: D

QUESTION 34

You plan to use the Systems Management Server (SMS) Operating System Deployment (OSD) Feature Pack to upgrade computers that run Windows XP to Windows Vista. You plan to use the User State Migration Tool (USMT) to migrate user state during the upgrade. You need to ensure that you are able to migrate user state from Windows XP to Windows Vista. What should you do?

- A - Use USMT 2.6 to capture user state on Windows XP. Use USMT 3.0 to restore user state on Windows Vista.
- B - Use USMT 3.0 to capture user state on Windows XP. Use USMT 3.0 to restore user state on Windows Vista.
- C - Use USMT 2.6 to capture user state on Windows XP. Use USMT 2.6 to restore user state on Windows Vista.
- D - Use USMT 3.0 to capture user state on Windows XP. Use USMT 2.6 to restore user state on Windows Vista.

Answer: B

QUESTION 35

Your company uses Systems Management Server (SMS) Operating System Deployment (OSD) Feature Pack to upgrade a computer that runs Windows XP to Windows Vista. The upgrade fails to complete. You need to determine why the upgrade failed. What should you do?

- A - Review the bdd.log file on the failed client computer.
- B - Examine the SMS Site Server log file.
- C - Modify the Operating System Package to include the /Debug:True switch. Update the Operating System Package.
- D - Examine the OSD deployment log file.

Answer: C

QUESTION 36

You create a custom Windows Vista image. Your company purchases several new computers. The new computers contain network adapters that require drivers which are not included in your

Windows Vista image. You need to ensure that the network adapters will function correctly on the new computers when Windows Vista is installed. What should you do?

- A - Use Windows System Image manager to create a distribution share. Add the network card drivers to the out-of-box Drivers folder on the distribution share.
- B - Create a custom build of Windows PE Ensure the custom build of Windows PE contains the network card drivers.
- C - Create a folder named out-of-box Drivers in the Windows Vista image. Copy the drivers to the out-of-box folder.
- D - Add the drivers for the network cards to a folder. Use the PGKMGR command to add the drivers to the Windows Vista image.

Answer: D

QUESTION 37

You are upgrading client computers in your company to Windows Vista. Computers are currently configured with two partitions. All client computers must be reconfigured to have only one disk partition. You need to configure an unattended setup answer file for Windows Vista. What should you do?

- A - Add DISKPART to the WINPESH.LINI file
- B - Add FSUTIL to the WINPESH.LINI file
- C - Add a DiskConfiguration entry to the Pass7 C oobeSystem section of the unattended setup answer file.
- D - Add a DiskConfiguration entry to the Pass1 C windowsPE section of the unattended setup answer file.

Answer: D

QUESTION 38

You install Windows Vista on 250 client computers in your organization. Windows Vista is configured to use only the English language. Your company then hires employees whose primary language is Hungarian. You need to ensure that both the English and Hungarian languages are available on all client computers. You must accomplish this task using the least amount of administrative effort. What should you do?

- A - Create a new folder in the c:\Windows\System32 folder named hu-HU. Copy the Hungarian language pack to this folder.
- B - Create an unattended setup installation file which references the Hungarian language pack. Use the PKGMGR command to apply the unattended setup installation file to the computer.
- C - Capture an image of the Windows Vista computer. Add the Hungarian language pack to the image. Deploy the image back onto the computer.
- D - Install the Hungarian language pack using the Control Panel on each computer.

Answer: B

QUESTION 39

Your company creates a custom Window Vista image. The Sales department would like all games removed from the image. They would also like all games removed from computers which

have already installed the custom Windows Vista image. You need to remove all Windows games from the custom Windows Vista image and all of the computers which have already installed the image. What do you do?

- A - Use the PKGMGR command to remove the games from the computers which have already installed the image. Use the SYSOCMGR command to remove the games from the image
- B - Use the SYSOCMGR command to remove the games from the computers which have already installed the image. Use the PKGMGR command to remove the games from the image
- C - Use the PKGMGR command to remove the games from the computers which have already installed the image. Use the PKGMGR command to remove the games from the image
- D - Use the SYSOCMGR command to remove the games from the computers which have already installed the image. Use the SYSOCMGR command to remove the games from the image

Answer: C

QUESTION 40

You install Windows Vista on computers in your company. The computers have multiple hardware configurations. You plan to add additional hardware configurations in the future. You need to ensure that all hardware configurations function correctly when Windows Vista is installed. You must accomplish this task with the least amount of administrative effort. What should you do?

- A - Create a Windows Vista image for each hardware configuration. Ensure each Windows Vista Image includes the appropriate device drivers.
- B - Create a distribution point which includes an Out-of-Box Drivers folder. Add all device drivers to this folder. Ensure your unattended setup installation file uses this Out-of-Box Drivers folder.
- C - Create a single Windows Vista image. Use the PKGMGR command to add device drivers to the image when you add additional hardware configurations.
- D - Create a single Windows Vista image. Add an Out-of-Box Drivers folder to the root of the image. Add all device drivers to this folder.

Answer: B

QUESTION 41

You are installing Windows Vista on computers that do not support network booting using PXE. You need to ensure that users are not prompted for input when they install Windows Vista on these computers. What should you do?

- A - Create an unattended setup installation file named unattend.xml. Copy the file to the sysvol shared folder.
- B - Create an unattended setup installation file named autounattend.xml. Copy the file to a USB flash drive (UFD) device. Ensure the UFD device is plugged into the computer when Windows Vista is installed.
- C - Create an unattended setup installation file named unattend.xml. Copy the file to the root of the installation media.
- D - Create an unattended setup installation file named autounattend.xml. Add the file to the Build\$ share on a Windows Deployment Services (WDS) server.

Answer: B

QUESTION 42

Your company creates a custom Windows Vista installation image that includes support for the English and Spanish languages. Your company then hires users whose primary language is French. You need to add support to the reference computer image for users whose primary language is French. You must accomplish this task using the least administrative effort. What should you do?

- A - Install the image on a reference computer. Add the appropriate language pack to the image. Capture an image of the reference computer.
- B - Mount the image using the ImageX utility. Use the PKGMGR command to add the appropriate language pack to the image.
- C - Create a folder named fr-FR in the root of the image. Add the language pack file to this folder.
- D - Create a data WIM file. Add the language pack file to the data WIM file. Add a reference to the data WIM file in the images automated setup installation file.

Answer: B

QUESTION 43

Your company has three Windows Vista installation images. You need to store a copy of all Windows Vista installation images on a server in a branch office. You need to ensure the images use the smallest possible amount of disk space. What should you do?

- A - Use the ImageX utility to apply the images to folders on your computers. Use the ImageX utility to capture each image to a separate WIM file using maximum compression.
- B - Use the ImageX utility to split the three images into smaller sizes. Transfer the split images to the branch office.
- C - Use the ImageX utility to mount image to a folder on your computer. Enable NTFS compression on the folders. Use the ImageX utility to unmount the images. Transfer all three images to the branch office.
- D - Use the ImageX utility to apply two of the images to folders on your computer. Use the ImageX utility to append those two images to the third image. Transfer the third image to the branch office.

Answer: D

QUESTION 44

Your company has created a custom Windows Vista image which includes several language packs. You access the default Windows Vista installation image and use Windows System Image Manager to create an unattended setup installation file. You discover that you cannot access language pack settings in Windows System Image manager. You need to ensure that you can create an unattended setup installation file for your custom Windows Vista image that includes language pack settings. What should you do?

- A - Use Windows System Image Manager to load the catalog files that are included on the default installation media.
- B - Use Windows System Image Manager to generate a new catalog based on your custom

Windows Vista image.

C - Copy the language packs used in your custom Windows Vista Image to your computer.

D - Add a Microsoft-Windows-Setup ImageInstall setting to the Pass 1 - windowsPE pass in the unattended setup installation file.

Answer: B

QUESTION 45

You plan to upgrade computers from Windows XP to Windows Vista. You will also migrate user state from Windows XP to Windows Vista by using the User State Migration Tool. Your company uses a custom application that creates files with a .FRM extension. You need to ensure that files created by the custom application are included in the user state during the migration. What should you do?

A - Edit the MigUser.xml file.

B - Edit the UserData.inf file.

C - Edit the MigData.inf file.

D - Edit the MigApp.xml file.

Answer: A

QUESTION 46

You plan to upgrade computers from Windows XP to Windows Vista. You need to create a shared folder on a server to store user state during the upgrade. You need to ensure that the shared folder contains enough free space to store user state. What should you do?

A - Run the User State Migration Tool ScanState command using the /p switch.

B - Review the properties of the My Documents folder on the Windows XP computers.

C - Run the DIR /S command on the Windows XP computers.

D - Run the User State Migration Tool ScanState command with the /o switch.

Answer: A

QUESTION 47

You plan to upgrade 1,000 computers from Windows XP to Windows Vista. You will also migrate user state from Windows XP to Windows Vista. The computers hard disk drives will be repartitioned during the upgrade process. You need to ensure that user state is migrated from Windows XP to Windows Vista during the upgrade. You must accomplish this task using the least administrative effort. What should you do?

A - Use the Windows Easy Transfer wizard to migrate the user state. Store the user state on an external hard drive.

B - Use the User State Migration Tool (USMT) to migrate the user state. Store the user state on a folder on the local hard disk. Delete all other folders on the local hard disk.

C - Use the User State Migration Tool (USMT) to migrate the user state. Store the user state on a folder on a network server.

D - Enable roaming profiles and folder redirection on all user accounts. Upgrade the computers to Windows Vista.

Answer: C

QUESTION 48

You plan to upgrade 1,000 computers from Windows XP to Windows Vista. You will also migrate user state from Windows XP to Windows Vista. The hard drives of the computers are configured as shown in the following table.

Hard Disk Total Size	60 GB
Partition 1 Total Size	30 GB
Partition 2 Total Size	30 GB
Partition 1 Free Space	5 GB
Partition 2 Free Space	25 GB

You examine the Windows XP computers and determine that the user state is 20GB.

You need to migrate user state from Windows XP to Windows Vista. You need to accomplish this task with the minimum amount of network traffic.

What should you do?

- A - Configure USMT to use a shared folder on a server as the temporary storage area during the migration. Repartition the hard disk.
- B - Configure USMT to use partition 1 as the temporary storage area during the migration.
- C - Configure USMT to use a shared folder on a server as the temporary storage area during the migration. Reformat the hard disk.
- D - Configure USMT to use the partition 2 as the temporary storage area during the migration.

Answer: D

QUESTION 49

You plan to deploy Windows Vista using Zero Touch Installation (ZTI). You use the Business Desktop Deployment (BDD) Workbench to create an SMS 2003 OSD deployment point. You attempt to create a reference computer using the SMS 2003 OSD deployment point and discover that you can not access the SMS 2003 OSD deployment point. You need to build a reference computer using the SMS 2003 OSD deployment point. What should you do?

- A - Share the deployment point as Build\$.
- B - Install Windows Deployment Services (WDS) on the computer which contains the deployment point.
- C - Share the path you specified in the BDD deployment wizard using the share name you specified in the BDD deployment wizard.
- D - Install Systems Management Server 2003 on the server containing the deployment point.

Answer: C

QUESTION 50

You use Windows Deployment Services (WDS) to deploy Windows Vista. You discover that some of the computers in the Sales department are not able to install Windows Vista using WDS. You also discover that these computers are unable to network boot using PXE. You need to ensure that you can install Windows Vista using WDS on the computers in the Sales department. What should you do?

- A - Use the Business Desktop Deployment workbench to create a distribution share on the WDS server. Install Windows Vista using this share.
- B - Add a DHCP Relay Agent to the WDS Server. Configure the WDS Server to not use DHCP Option 60.
- C - Use the Windows Advanced Installation Kit to create a custom build of Windows PE which includes network drivers for the client computers. Use Windows PE to start the Windows Vista installation.
- D - Create WDS Discovery Image. Use this image to create a bootable CD. Install Windows Vista using the WDS Discovery image.

Answer: D

QUESTION 51

You use System Image Manager to create an automated setup installation file named unattend.xml. You copy the unattend.xml file to a USB flash drive (UFD). You insert the Windows Vista product DVD and the UFD in a computer and discover that Windows Vista prompts for user input during the installation.

You need to ensure that Windows Vista does not prompt for user input during installation. You must also ensure that Windows Vista setup uses the settings in your unattend.xml file. What should you do?

- A - Copy the unattend.xml file to the root of the C Drive.
- B - Rename the unattend.xml file to Winnt.sif
- C - Rename the Unattend.xml file to autounattend.xml.
- D - Copy the unattend.xml file to the c:\Windows\Setup folder.

Answer: C

QUESTION 52

You deploy Windows Vista in a branch office. The network in the branch office has a single server named Server1 that provides DNS and DHCP services. You install Windows Deployment Services (WDS) on Server1. You add a Windows Vista installation image and boot image to the WDS server. When you attempt to network boot using PXE on client computers, they fail to connect to the WDS server. You need to ensure that users can install Windows Vista using WDS. What should you do? (Each correct answer presents part of the solution. Choose two.)

- A - Configure WDS to listen on port 67.
- B - Install a DHCP Relay agent on Server1.
- C - Use Windows Firewall to block port 67.
- D - Enable DHCP Option 60 on Server1.
- E - Unbind DHCP from the network interface on Server1.

Answer: A, D

QUESTION 53

You create a customized build of Windows PE. You need to display a welcome message to users of this customized build. You create an HTML document which contains your welcome message. What should you do next?

- A - Use the PEIMG command to add the WinPE-XML package to your Windows PE build. Add the path to the HTML file to the WINPESHL.INI file.
- B - Add the HTML file to the Windows\Branding folder in your Windows PE build.
- C - Add the path to the HTML file to the WindowsShell.Manifest file in your Windows PE build.
- D - Use the PEIMG command to add the WinPE-HTA package to your Windows PE build. Add the path to the HTML file to the startnet.cmd file.

Answer: D

QUESTION 54

You work as the Desktop support technician at Company.com whose network consists of a single Active Directory domain named Certkiller .com. There are 300 client computers on the Company.com network. You have been instructed to deploy Microsoft Windows Vista operating system on thirty percent of these client computers. This thirty percent of the Certkiller .com client computers are recently purchased and as such have different hardware specifications than the remaining seventy percent of the client computers. To be able to comply with the instructions you will need to add device drivers to the existing Windows Vista image. You thus need to make a decision as to which utility to use. What should you do?

- A. Make use of ImageX
- B. Make use of INTLCFG.EXE
- C. Make use of OFFSCAN.EXE
- D. Make use of PKGMGR.EXE

Answer: D

QUESTION 55

You are working for Company.com. Some users use Office 2003. Others use Office 2007. Users of Office 2003 cannot edit those documents saved by Office 2007. How to resolve this problem?

- A. Add the Office Compatibility Pack to the computers running Office 2007.
- B. Add the Office Compatibility Pack to the computers running Office 2003.
- C. Install Office 2003 SP2 on the computers running Office 2003.
- D. Install MSXML 6.0 on computers running Office 2003.

Answer: B

QUESTION 56

You work as the Desktop support technician at Company.com. The Company.com network consists of a single Active Directory domain named Company.com. You have been instructed to deploy Microsoft Windows Vista operating system on all the Company.com client computers. To this end you created a custom Windows Vista image to be used for deployment purposes. Then you noticed that some of the Company.com client computers have new audio cards installed. Thus you need to include the audio card drivers in the Windows Vista image. Following is the procedure that you follow:

1. You locate the audio card drivers in the out-of-box folder in the distribution share.

2. You use Windows System Image Manager (SIM) to create an answer file named Unattend.xml.
3. Unattend.xml contains the path to the audio drivers that you need to install.
4. You store Unattend.xml on the C:\ drive.
5. You use ImageX to mount a Windows Vista image to C:\Winmount.

Now all that is required is that you use the PKGMGR.EXE command-line utility to apply the answer file to the mounted Windows Vista Image and thus have to make use of the appropriate syntax. What should you do?

- A. Use the PKGMGR.EXE /o:"C:\Winmount\;C:\Winmount\Windows" /n:"Unattend.xml"commandline syntax.
- B. Use the PKGMGR.EXE /o:"C:\Winmount\Windows" /n:"C:\Unattend.xml" command-line syntax.
- C. Use the PKGMGR.EXE /o:"C:\Winmount\;C:\Winmount\Windows" command-line syntax.
- D. Use the PKGMGR.EXE /o:"C:\Winmount\;C:\Winmount\Windows" /n:"C:\Unattend.xml" command-line syntax.

Answer: D

QUESTION 57

You work as the Desktop engineer at Company.com. The Company.com network consists of a single Active Directory domain named Company.com. You received instructions to apply security updates for Company.com. You need to comply with this instruction without impacting functionality by using the Update Compatibility Evaluator (UCE). What should you do?

- A. The Update Impact Summary Reports should be run.
- B. The Update Impact Application Reports should be run.
- C. The Operating System Reporting Computer Reports should be run.
- D. The Operating System Reporting Application Reports should be run.

Answer: B

QUESTION 58

Which tool should you use to identify documents that are not compatible with Office 2007 before upgrading to Office 2007?

- A. Office Configuration assistant.
- B. Application Compatibility Analyzer.
- C. Office File Converter.
- D. OMPM File Scanner tool

Answer: D

QUESTION 59

You work as the Desktop support technician at Company.com. The Company.com network consists of a single Active Directory domain named Company.com. You have been instructed to deploy Microsoft Windows Vista operating system on all the Company.com client computers. A

client computer named Company.com -WS624 has been assigned to you. You make use of Company.com -WS624 as a reference computer. To this end you created a custom Windows Vista image to be used for deployment purposes. You then used PKGMGR.EXE command-line utility to add boot critical device drivers to Windows Vista image. Now you need to enable logging of the device drivers added to the Windows Vista image. Consequently you need to edit the registry key on Company.com -WS624 which is running PKGMGR.EXE. You then open the Registry Editor to access Regedit.exe. Now you need to decide which would be the appropriate registry key to edit. What should you do?

- A. Add the DebugPkgMgr Key in HKLM\Software\Microsoft\Windows\TabletTIP.
- B. Add the DebugPkgMgr Key in HKLM\Software\Microsoft\Windows NT\CurrentVersion\SL.
- C. Add the DebugPkgMgr Key in
HKEY_LOCAL_MACHINE\SOFTWARE\Microsoft\RemovalTools\MRT.
- D. Add the DebugPkgMgr Key in HKLM\Software\Microsoft\Windows\CurrentVersion\Device Installer.

Answer: D

QUESTION 60

You are working for Company.com using office 2007. Your company has two departments. Sales department requires only Word and Excel. Accounting department requires only Excel and InfoPath. What should you do next to deploy Office 2007 to computers in each department after creating a shared folder named \\Server1\Office?

- A. Copy installation files to shared folder. Create an .MSP file for each department. Create a script for each department that uses the appropriate .MSP file.
- B. Copy installation files to shared folder. Create an .MST file for each department. Create a script for each department that uses the appropriate .MST file.
- C. In shared folder, create a folder for each department. Copy installation files to each folder. Create a CUSTOM.MSP file in each folder. Instruct users to run setup from the appropriate folder.
- D. In shared folder, create a folder for each department. Copy installation files to each folder. Create a CUSTOM.MST file in each folder. Instruct users to run setup from the appropriate folder.

Answer: A

QUESTION 61

You work as a technician at Company.com. The Company.com network consists of a single Active Directory domain named Company.com. All client computers at Company.com run Microsoft Windows Vista Business. Due to breaches in security a new Company.com directive states that biometric security devices be implemented. In particular, fingerprint readers should be used to control access to the Company.com facilities. To this end Company.com recently purchased a fingerprint reader device from a third-party vendor. The plan is to connect the fingerprint reader to one of the client computers. The fingerprint device shipped with a CD-ROM that has different versions of the driver and software application that supports different operating

systems. The vendor also offers online support for the fingerprint reader and thus the driver and the application can also be downloaded from the Manufacturer's Web site. The driver is digitally signed, but the software application is not. You now need to install the correct driver and application for the device. What should you do? (Each correct answer presents part of the solution. Choose TWO.)

- A. First connect the fingerprint reader to the computer.
- B. Afterwards connect the fingerprint reader to the computer.
- C. First install the driver and software application from the CD-ROM separately.
- D. Then install the driver and the software application using the Found New Hardware wizard.
- E. First install the driver and software application from the manufacturer's Web site separately.
- F. Cancel out of the Found New Hardware wizard if it opens.

Answer: A, D

QUESTION 62

You work as the Desktop support technician at Company.com. The Company.com network consists of a single Active Directory domain named Company.com. Company.com is expanding into Italy and is currently planning to set up an office in Milan. The Milan office will be populated with Italians. It is your responsibility to provide support for all languages that the Company.com users may need. To this end you created a Windows Vista image. However, when creating the image you neglected to install a language pack. You thus need to add the language pack to this image which is currently running on your computer. You need to carry out this task with the least amount of administrative effort. What should you do?

- A. Use the ImageX command-line tool to mount the image and make the appropriate changes using an answer file.
- B. Use a script to commit changes to the image and then unmount the image.
- C. Make the appropriate changes to the image by running the International Settings and Configuration (INTLCFG.EXE) tool.
- D. Use the Package Manager (PKGmgr.EXE) command-line tool to create an answer file and apply it to the image.

Answer: D

QUESTION 63

You work as the Help Desk technician at Company.com. The Company.com network consists of a single Active Directory domain named Company.com. Currently all workstations on the Company.com network runs Microsoft Windows 2000 Professional. A new Company.com directive states that all workstations should be upgraded to Microsoft Windows Vista. All the Company.com employees have been instructed to follow the new management directive. A Company.com user named Mia Hamm contacted the Help desk to lodge a complaint. She currently uses a client computer named Company.com -WS612. Her complaint is that she is unable to use her workstation because she received a stop error and the machine stops responding when she start the computer in either normal mode or in safe mode. You need to

ensure that Mia Hamm will be able to use her workstation. To this end you need to ensure that Company.com -WS612 can boot without receiving any error.
What should you do?

- A. You should uninstall Windows Vista, and revert back to the Windows 2000 Professional operating system.
- B. You should use the Windows Vista DVD to reboot the computer and run the Startup Repair utility.
- C. You should run Software Explorer.
- D. You should disable startup items by running Msconfig.exe.

Answer: B

QUESTION 64

You are working for Company.com and you plan to install Office 2007. You configure two distribution points. One is named \\Server1\Office2007. The other is named \\Server2\Office 2007. What should you do to ensure that if two points can load balance? (Choose two.)

- A. Create an administrative installation point for each distribution server.
- B. Create a shortcut which points to the additional distribution point on the root distribution point.
- C. Create a Custom.MSP file.
- D. Configure the Config.XML file.

Answer: C, D

QUESTION 65

You work as the Desktop support technician at Company.com. The Company.com network consists of a single Active Directory domain named Company.com. You have been requested to remove certain components from a custom Windows Vista image after it has already been created. You need to decide on the appropriate utility to use to comply with this request. What should you do?

- A. Use the SYSOCMGR.EXE utility.
- B. Use the PEIMG.EXE utility.
- C. Use the PKGMGR.EXE utility.
- D. Use the BCDEDIT.EXE utility.

Answer: C

QUESTION 66

You work as the Desktop support technician at Company.com. The Company.com network consists of a single Active Directory domain named Company.com. Company.com is expanding into Italy and is currently planning to set up an office in Milan. The Milan office will be populated with Italians. Currently the Company.com Windows Vista image includes support for English and French only. You thus received instructions to support the Italians in the Milan office. To this end you created a custom Windows Vista image that includes Italian language support. You need to

carry out this task without editing the Windows Vista image. What should you do?

- A. Use the Language Pack Setup Tool to install the Italian language pack.
- B. Use the INTLCFG.EXE tool to install the Italian language pack.
- C. Use the Package Manager utility to install the Italian language pack.
- D. The Italian language pack should be copied to the Windows distribution folder.

Answer: D

QUESTION 67

You work as the desktop technician at Company.com. The Company.com network consists of a single Active Directory domain named Company.com. You received instruction to deploy Microsoft Windows Vista to all the Company.com computers. You are thus creating a custom Windows Vista image to deploy the Windows Vista operating system on the Company.com computers. You now need to capture a Windows Vista image in the new .WIM file format and you also need to ensure that the .WIM file should use the least amount of disk space. To this end you use the ImageX command-line utility with the /capture and /compress switches. Now you need to verify the integrity of the .WIM file and thus need to use the correct switch in conjunction with the ImageX command. What should you do?

- A. Use the /split switch.
- B. Use the /check switch.
- C. Use the /export switch.
- D. Use the /verify switch.

Answer: B

QUESTION 68

You work as the Desktop support technician at Company.com. The Company.com network consists of a single Active Directory domain named Company.com. You have received instructions to deploy the Windows Vista operating system on all the Company.com client computers that has CD-ROM drives installed. To comply with the instruction you created a custom Windows Vista image to deploy Windows Vista operating system. Some client computers are equipped with CD-ROM drives and the others with DVD-ROM drives. You want to install Windows Vista on the client computers that have CD-Rom drives only. To this end you need to create a spanned media using the Createspannedshares.cmd script to ensure that you install Windows Vista only on the computers that are equipped with CD-Rom drives only. However, you find that you are unable to do so. You thus need to address the issue. What should you do?

- A. You need to install the Package Manager prior to creating the spanned media.
- B. You need to install Windows Automated Installation Kit (WAIK) prior to creating the spanned media.
- C. You need to install DVD-ROM drives on the CD-ROM client computers prior to creating the spanned media.
- D. You need to install the Windows System Image Manager (SIM) prior to creating the spanned media.

Answer: B

QUESTION 69

You work as the Desktop support technician at Company.com. The Company.com network consists of a single Active Directory domain named Company.com. You have been instructed to deploy Microsoft Windows Vista operating system on all the Company.com client computers. To this end you created a custom Windows Vista image to be used for deployment purposes. Now you need to enable and disable certain Windows Vista features because not all Company.com users need to have all the features available to them. This means that you need to enable and disable these features by servicing the Windows Vista image both offline and online. You need to decide on which utility to use so as to complete the task. What should you do? (Each correct answer presents part of the solution. Choose TWO.)

- A. Make use of SETUPMGR.EXE.
- B. Make use of PEIMGR.EXE.
- C. Make use of OCSETUP.EXE.
- D. Make use of INTLCFG.EXE.
- E. Make use of PKGMGR.EXE.

Answer: C, E

QUESTION 70

You are working for Company.com .You plan to upgrade computers to Windows Vista. You need to generate a list of applications that are installed on computers. What should you deploy by Application Compatibility Toolkit?

- A. IE Compatibility Evaluator
- B. User Account Control Compatibility Evaluator
- C. Update Compatibility Evaluator
- D. Inventory Collector

Answer: D

QUESTION 71

You work as the Desktop support technician at Company.com. The Company.com network consists of a single Active Directory domain named Company.com. You have been instructed to deploy Microsoft Windows Vista operating system on all the Company.com client computers. To this end you created a custom Windows Vista image to be used for deployment purposes. You then make use of the ImageX command-line utility to create a Windows image (.WIM) file. The .WIM file is stored on a Company.com computer that is running Windows XP Service Pack (SP) 2. You are now required to modify the Windows Vista image on a computer. What should you do?

- A. You should use the ImageX command with the /append switch.
- B. The Windows Deployment Service (WDS) should be installed.
- C. The Windows System Image Manager (SIM) should be installed.

D. The Windows Imaging File System Filter (WIM FS Filter) driver should be installed.

Answer: D

QUESTION 72

You work as the Desktop support technician at Company.com. The Company.com network consists of a single Active Directory domain named Company.com. You have been instructed to deploy Microsoft Windows Vista operating system on all the Company.com client computers. A client computer named Company.com -WS622 has been assigned to you. You are required to the deploy Windows Vista on the client computers in unattended mode. To this end you need to prepare Company.com -WS622 as a reference computer to build the master image. You then manually create the answer file that will be required for the unattended Windows Vista installation. You need to decide on which action to take next so as to complete the task. What should you do?

- A. Prepare a Company.com -WS622 image to capture using Sysprep.exe.
- B. Capture a Company.com -WS622 image using ImageX.
- C. Validate the answer file using Windows System Image Manager (SIM).
- D. Validate the answer file using Setup Manager Tool.

Answer: C

QUESTION 73

You are working for Company.com. You plan to upgrade computers to Windows Vista. You have a Web application. You install the Application Compatibility Toolkit on a client computer. What should you deploy to identify compatibility issues with the web application?

- A. Inventory Collector
- B. User Account Control Compatibility Evaluator
- C. Update Compatibility Evaluator
- D. IE Compatibility Evaluator

Answer: D

QUESTION 74

You work as the Desktop support technician at Company.com. The Company.com network consists of a single Active Directory domain named Company.com. You have been instructed to deploy Microsoft Windows Vista operating system on the Company.com client computers. These particular client computers do not support PXE. Following is the course of action that you take:

1. Install Windows Deployment Service (WDS) on a server named Company.com -SR05.
2. Create a discover image to install Windows Vista on non- PXE supporting client computers.

Now you need to decide on the best way to create a bootable media that will be used to deploy Windows Vista on the non-PXE supporting client computers. What should you do?

- A. On Company.com -SR05 install Windows System Image Manager (SIM).
- B. On Company.com -SR05 install Windows Automated Installation Kit (WAIK).

- C. On Company.com -SR05 install Business Desktop Deployment (BDD) workbench.
- D. On Company.com -SR05 install System Management Server (SMS) and create an Image Capture CD using the SMS console.

Answer: B

QUESTION 75

You work as the Desktop support technician at Company.com. The Company.com network consists of a single Active Directory domain named Company.com. You have been instructed to deploy Microsoft Windows Vista operating system on all the Company.com client computers. A server named Company.com -SR04 is used to assign IP addresses to client computers using the network boot Pre-Boot Execution Environment (PXE). Another server named Company.com -SR05 is divided into two partitions namely C and D. Partition C is a system partition formatted with NTFS and Partition D is empty and formatted with File Allocation table (FAT32). You need to configure Windows Deployment Service (WDS) on Company.com -SR05. You must ensure that WDS is successfully installed and configured on Company.com -SR05 with the least amount of administrative effort. Thus you need to decide on the next logical action to take. What should you do?

- A. Partition D should be converted to D using the Convert command.
- B. A forward-lookup zone must be created for Company.com on Company.com -SR05
- C. Dynamic Host Configuration Protocol (DHCP) should be moved to Company.com -SR05
- D. Partition D should be deleted and then created with NTFS format using the Disk Management tool.

Answer: A

QUESTION 76

You are working for Company.com. You plan to upgrade computers to Windows Vista. You find an application App1 is not compatible with Windows Vista and cannot be modified to run on Windows Vista. App1 requires Windows XP SP2. You verify that the Windows XP SP2 compatibility mode fails to allow the application to run. How to ensure that users can use App1 while running Windows Vista?

- A. Install Windows XP SP2 then reinstall app1.
- B. Create a virtual machine running Windows XP SP2. Deploy the virtual machine to the Windows Vista computers.
- C. Copy the Windows XP SP2 installation files to the WinSxS folder. Copy the App1 executable files to the WinSxS folder.
- D. Create a customPIF for the App1 executable files.

Answer: B

QUESTION 77

You work as the Desktop support technician at Company.com. The Company.com network consists of a single Active Directory domain named Company.com. You have been instructed to

deploy Microsoft Windows Vista operating system on all the Company.com client computers. To this end you configure Windows Deployment Service (WDS) server and use the WDS server to deploy Windows Vista to the Company.com client computers. You need to decide which of the WDS components will assist in the deployment of Windows Vista. What should you do?

- A. Use the Domain Naming System (DNS) server- and the Trivial File Transfer Protocol (TFTP) server- WDS server components.
- B. Use the Pre-Boot Execution Environment (PXE) server- and the File Transfer Protocol (FTP) server- WDS server components.
- C. Use the Pre-Boot Execution Environment (PXE) server- and the Hypertext Transfer Protocol (HTTP) server- WDS server components.
- D. Use the Pre-Boot Execution Environment (PXE) server- and the Trivial File Transfer Protocol (TFTP) server- WDS server components.

Answer: D

QUESTION 78

You work as the Desktop support technician at Company.com. The Company.com network consists of a single Active Directory domain named Company.com. You have been instructed to deploy Microsoft Windows Vista operating system on all the newly purchased Company.com client computers. The old client computers are currently running Microsoft Windows XP Professional Service Pack (SP) 2. You thus create an answer file using the Windows System Image Manager (SIM) and then you must save the answer file to a Universal Serial Bus (USB) flash drive. Now you need to decide on which name to specify to the answer file that is to be saved to the USB flash drive. What should you do?

- A. Specify the answer file as Winnt.sif.
- B. Specify the answer file as Unattend.txt.
- C. Specify the answer file as Unattend.xml.
- D. Specify the answer file as Autounattend.xml.

Answer: D

QUESTION 79

You work as the Desktop support technician at Company.com. The Company.com network consists of a single Active Directory domain named Company.com. You have been instructed to deploy Microsoft Windows Vista operating system on all the Company.com client computers. You need to complete this task using Zero Touch Installation (ZTI). To this end you install the System Management Server (SMS) 2003 operating system deployment (OSD) Feature Pack. You now need to decide which SMS 2003 OSD feature pack phase should be configured to update the Sysprep.inf file. What should you do?

- A. You should configure the Zero Touch Installation-Preinstall feature pack.
- B. You should configure the Zero Touch Installation-Validation feature pack.
- C. You should configure the Zero Touch Installation-Postinstall feature pack.
- D. You should configure the Zero Touch Installation-State Capture feature pack.

Answer: C

QUESTION 80

You work as the Desktop support technician at Company.com. The Company.com network consists of a single Active Directory domain named Company.com. You have been instructed to deploy Microsoft Windows Vista operating system on all the Company.com client computers. You need to complete this task using Zero Touch Installation (ZTI). Thus you install the System Management Server (SMS) operating system deployment (OSD) Feature Pack on a primary site server. Now you need to create the master image on a reference computer named Company.com -WS622. To this end you need to enable Company.com -WS622 to respond to and be managed by SMS after the install. What should you do?

- A. You should install Windows Deployment Service (WDS) on Company.com -WS622.
- B. You should install Windows Preinstallation Environment (PE) on Company.com -WS622.
- C. You should install SMS Advanced Client on Company.com -WS622.
- D. You should install Windows Automated Installation Kit (WAIK) on Company.com -SW622.

Answer: C

QUESTION 81

You work as the Desktop support technician at Company.com. The Company.com network consists of a single Active Directory domain named Company.com. You have been instructed to deploy Microsoft Windows Vista operating system on all the Company.com client computers. You need to complete this task using Zero Touch Installation (ZTI). To this end you install the System Management Server (SMS) 2003 on a site server named Company.com -SR11. Now you need to decide on the next action that you should take. What should you do?

- A. You should install Business Desktop Deployment (BDD) 2007 on Company.com -SR11.
- B. You should install SMS 2003 operating system deployment (OSD) Feature Pack on Company.com -SR11.
- C. You should install Windows Deployment Service (WDS) on Company.com -SR11.
- D. You should create a BDD 2007 deployment point on Company.com -SR11.

Answer: B

QUESTION 82

You work as the Desktop support technician at Company.com. The Company.com network consists of a single Active Directory domain named Company.com. You have been instructed to deploy Microsoft Windows Vista operating system on all the Company.com client computers. To this end you need to add additional network adapter support to the Windows Preinstallation Environment (PE). Now you need to decide on the appropriate command to use so as to create a customized Windows PE image manually. What should you do?

- A. Use the STARTNET.CMD command.
- B. Use the OSCDIMG.EXE command.

- C. Use the PKGMGR.EXE command.
- D. Use the MKIMG.CMD command.

Answer: D

QUESTION 83

You work as the Desktop support technician at Company.com. The Company.com network consists of a single Active Directory domain named Company.com. You have been instructed to deploy Microsoft Windows Vista operating system on all the Company.com client computers. To this end you need to create a custom Windows Preinstallation Environment (PE) build that will enable you to deploy Windows Vista on the target computers. Thus you set out and customize the Windows PE build. Now you need to decide on the appropriate action to take so as to create an .ISO file that contains the customized Windows PE build. What should you do?

- A. Create the .ISO file by updating the deployment point.
- B. Create the .ISO file by customizing the Windows PE splash screen.
- C. Create the .ISO file by configuring Windows Deployment Service (WDS).
- D. Create the .ISO file by configuring the Windows PE 2004/2005 tab using Deployment Workbench.

Answer: A

QUESTION 84

You are working for Company.com .You use BDD Workbench to deploy Windows Vista. You create an unattended setup installation file unattend.xml. How to include the unattend.xml file in your Windows Vista build?

- A. Recreate Windows Vista build with file file unattend.xml.
- B. Copy the unattend.xml file into the folder including the Windows Vista build. Overwrite the existing unattend.xml.
- C. Copy the unattend.xml file to the root of the Control directory.
- D. Rename the unattend.xml file to autounattend.xml. Copy the autounattend.xml file to the Control directory.

Answer: B

QUESTION 85

You work as the Desktop support technician at Company.com. The Company.com network consists of a single Active Directory domain named Company.com. . A computer named Company.com -WS624 has been assigned to you. You need to install Windows Vista on Company.com -WS624. Following is a description of the process that you followed:

1. You create a customized Windows PE image for Windows Vista.
2. You boot Company.com -WS624 using the Windows PE image.
3. You initiate the installation using the Windows PE image.

However, you then discover that the network settings have not been configured. You must configure the network settings and need to take the appropriate action so as to complete the task

with the least amount of administrative effort. What should you do?

- A. Add the customized network drivers to the Windows PE image.
- B. Configure the network adapter drivers using the DRVLOAD command.
- C. Configure the network adapter configuration settings using the NETCFG command.
- D. Use the appropriate network configuration settings and re-create the Windows PE image.

Answer: C

QUESTION 86

You work as the Desktop support technician at Company.com. The Company.com network consists of a single Active Directory domain named Company.com. . A client computer named Company.com -WS624 has been assigned to you. Company.com -WS624 is currently running Windows Vista. After an application installation you reboot Company.com -WS624. However, Company.com -WS624 fails to start. You thus have a suspicion that some of the system files might have been corrupted. You need to take the appropriate action so as to restore the system with the least amount of administrative effort. What should you do?

- A. Reformat the Company.com -WS624 hard disk using Windows Vista media and reload Windows Vista to replace the corrupt system files.
- B. Reload the hard disk drivers using the DRVLOAD command to replace the corrupt system files.
- C. Boot Company.com -WS624 using Windows Vista installation media then replace the corrupt system files.
- D. Start Company.com -WS624 using Windows PE and use Windows Vista installation media to replace the corrupt system files.

Answer: D

QUESTION 87

You work as the Desktop support technician at Company.com. The Company.com network consists of a single Active Directory domain named Company.com. You have been instructed to deploy Microsoft Windows Vista operating system on all the Company.com client computers. You need to complete this task using Zero Touch Installation (ZTI). To this end you install the System Management Server (SMS) 2003 operating system deployment (OSD) Feature Pack on a primary site server named Company.com -SR02. However you discovered that the target computers are not receiving the SMS 2003 OSD Feature Pack advertisements. You need the Company.com client computers to receive the SMS 2003 OSD Feature Pack advertisements so as to complete the task. What should you do?

- A. The deployment process flowcharts should be reviewed.
- B. The distribution points should be updated with SMS 2003 Administrator.
- C. The Company.com client computers hardware and software requirements should be verified.
- D. Verify that the Company.com client computers are in the SMS collection used during the distribution of the SMS 2003 OSD Feature Pack.

Answer: D

QUESTION 88

You work as the Desktop support technician at Company.com. The Company.com network consists of a single Active Directory domain named Company.com. You have been instructed to deploy Microsoft Windows Vista operating system on all the Company.com client computers. You have just installed Windows Vista on a master computer named Company.com -WS624 because you need to make use of this image to deploy on a number of computers. You also created an unattended installation file using the SMS OSD Feature Pack. To be able to carry out your task successfully you need to ensure that you will be able to install the image on multiple computers. To this end you need to decide on the next appropriate step that should be taken. What should you do?

- A. Create the image from Company.com -WS624.
- B. Install the operating system on a target computer.
- C. Store the image on a removable USB flash drive.
- D. Install the operating system on Company.com -WS624.

Answer: A

QUESTION 89

You work as the Desktop support technician at Company.com. The Company.com network consists of a single Active Directory domain named Company.com. You have been instructed to upgrade all the Company.com client computers to Microsoft Windows Vista operating system. You need to complete this task by performing an unattended Windows Vista installation by using the Systems Management Server (SMS) 2003 Operating System Deployment (OSD) Feature Pack. Following is a description of the procedure that you follow:

1. You install the Windows Automated Installation Kit (WAIK) on a deployment server.
 2. You create an answer file.
 3. You use the OSD Image Capture Wizard to successfully capture the Microsoft Windows Imaging Format (WIM) files.
 4. You successfully deploy the image. Now you need to perform offline servicing of the image.
- What should you do?

- A. You should use the OCSetup utility.
- B. You should use the Package Manager tool
- C. You should use the System Preparation (Sysprep) tool.
- D. You should use the System Image Manager (Windows SIM).

Answer: B

QUESTION 90

You work as the Desktop support technician at Company.com. The Company.com network consists of a single Active Directory domain named Company.com. A client computer named Company.com -WS624 has been assigned to you. Troubleshooting the Windows Vista

installations is your responsibility at Company.com. You make use of Company.com -WS624 as a reference computer. Following is a description of the procedure that you follow:

1. You create an Image Capture CD using the System Management Server (SMS) Operating System Deployment (OSD) Feature Pack.
 2. You restart Company.com -WS624 to capture an image.
 3. You launch the Image Capture CD from within Company.com -WS624 while it is running.
- Now you need to perform certain validation checks after launching the Image Capture CD from within Company.com -WS624. You thus need to take a decision on which validation checks to perform. What should you do? (Each correct answer presents part of the solution. Choose TWO.)

- A. Verify that Company.com -WS624 is not joined to a domain.
- B. Verify that Company.com -WS624 is located on the correct subnet.
- C. Verify that Company.com -WS624 has the SYSPREP tool installed.
- D. Verify that Company.com -WS624 is suitable for an image deployment.
- E. Verify that autounattend.xml file is located on the Company.com -WS624 C:\ drive.

Answer: A, C

QUESTION 91

You work as the Desktop support technician at Company.com. The Company.com network consists of a single Active Directory domain named Company.com. You have been instructed to deploy Microsoft Windows Vista operating system on all the Company.com client computers. You need to carry out this instruction using Lite Touch Installation (LTI). You decided to make use of a server named Company.com -SR02 as the deployment server. Consequently you need to create an answer file that will allow you to perform an unattended installation of Windows Vista and test applications for compatibility issues. What should you do?

- A. Install Windows Deployment Service (WDS) on Company.com -SR02.
- B. Install Application Compatibility Toolkit (ACT) 5.0 on Company.com -SR02.
- C. Install Business Desktop Deployment (BDD) 2007 on Company.com -SR02.
- D. Install Windows System Image Manager (SIM) on Company.com -SR02.

Answer: C

QUESTION 92

You work as the Desktop support technician at Company.com. The Company.com network consists of a single Active Directory domain named Company.com. You have been instructed to deploy Microsoft Windows Vista operating system on all the Company.com client computers. You have been assigned a server named Company.com -SR02 which you use as a deployment server. You use System Management Server (SMS) 2003 operating system deployment (OSD) Feature Pack to create a custom Windows Vista image. You then use Business Desktop Deployment (BDD) Workbench on Company.com -SR02 to create a distribution point. To enable client to access the BDD distribution points you created the SMS client network access account. Now you need to decide on what action to take so as to store the user state migration data and deployment logs on Company.com -SR02. What should you do?

- A. Additional folder must be created on Company.com -SR02.
- B. Additional shared folders must be created on the target computer.
- C. Additional shared folders must be created on Company.com -SR02.
- D. An additional distribution point must be created on Company.com -SR02 using BDD 2007.

Answer: C

QUESTION 93

The Company.com network consists of a single Active Directory domain named Company.com. You have been instructed to deploy Microsoft Windows Vista operating system on the Company.com client computers. You have been assigned a server named Company.com -SR0 which you use as a deployment server. You use System Management Server (SMS) 2003 operating system deployment (OSD) Feature Pack to create a custom Windows Vista image. You then create an SMS distribution point on Company.com -SR02 to deploy Windows Vista to all the Company.com client computers. Now you need to take the appropriate action to deploy the Windows Vista operating system on SMS managed client computers. What should you do? (Each correct answer presents part of the solution. Choose TWO.)

- A. The image package should be distributed to the SMS distribution point
- B. Windows Deployment Service (WDS) should be installed on the distribution point.
- C. Windows Automated Installation Kit (WAIK) should be installed on the SMS managed client computers.
- D. An SMS advertisement to deploy Windows Vista on the SMS managed client computers should be created.
- E. An Image Installation CD should be created to deploy Windows Vista on the SMS managed client computers.

Answer: A, D

QUESTION 94

You work as the Desktop support technician at Company.com. The Company.com network consists of a single Active Directory domain named Company.com. You have been instructed to deploy Microsoft Windows Vista operating system on the Company.com client computers. You have been assigned a server named Company.com -SR02 which you use as a deployment server. You plan to use System Management Server (SMS) 2003 operating system deployment (OSD) Feature Pack to deploy Windows Vista on the SMS managed client computers. To this end you use Business Desktop Deployment (BDD) Workbench to create a distribution point on Company.com -SR02. However, then you discover that SMS clients are unable to access the BDD 2007 deployment point. You made certain that the distribution point is shared with the same name specified on the BDD distribution build so as to enable clients to access the share. You need to address this issue to ensure that the SMS clients can access the BDD 2007 deployment point so as to complete the task. What should you do?

- A. A local user account should be created on the SMS client computers.
- B. The SMS advanced client network access account should be created.
- C. Appropriate permissions should be used when configuring distribution points.

D. Use BDD 2007 to create an additional distribution point on Company.com -SR02.

Answer: B

QUESTION 95

You work as the Desktop support technician at Company.com. The Company.com network consists of a single Active Directory domain named Company.com. You have been instructed to deploy Microsoft Windows Vista operating system on the Company.com client computers. xYou created a custom Windows Vista image that includes the Office 2007 Microsoft Installer Package (MSI) package that should be installed on the Company.com client computers. You thus need to use the appropriate command line to install the MSI package. What should you do?

- A. Use the Msiexec command with the /package switch.
- B. Use the Msiexec command with the /update switch.
- C. Use the Msiexec command with the /passive switch.
- D. Use the Msiexec command with the /package /uninstall switches.

Answer: A

QUESTION 96

You are working for Company.com. You plan to use the SMS OS Deployment (OSD) Feature Pack to upgrade computers from Windows XP to Windows Vista. Which component should you install to ensure that Windows XP clients can execute scripts during all phases of the OS deployment?

- A. .NET Framework 3.0.
- B. .NET Framework 2.0.
- C. .NET Framework 1.1.
- D. MSXML 6.0.

Answer: D

QUESTION 97

You work as the Desktop support technician at Company.com. The Company.com network consists of a single Active Directory domain named Company.com. You have been instructed to deploy Microsoft Windows Vista operating system on all the Company.com client computers. A client computer named Company.com -WS624 has been assigned to you. Following is a description of the actions that you take:

1. You decide to deploy Windows Vista on the Company.com client computers using System Management Server (SMS) 2003 operating system deployment (OSD) Feature Pack.
2. You configure Company.com -WS624 as the reference computer which will be used as the basis for a custom Windows Vista image. Now you need to create an Image Capture CD to boot Company.com -WS624 to Windows Preinstallation Environment (PE). Thus you must use the appropriate utility to create a bootable CD .iso image during the CD creation process. What should you do?

- A. You should use the Pkgmgr.exe utility.
- B. You should use the Oscdimg.exe utility.
- C. You should use the Ocdicw.exe utility.
- D. You should use the Cdburn.exe utility.

Answer: B

QUESTION 98

You are working for Company.com. You plan to use the SMS OS Deployment (OSD) Feature Pack to upgrade from Windows XP to Windows Vista. You plan to use the USMT to migrate user state during the upgrade. In order to ensure that you are able to migrate user state from Windows XP to Windows Vista, you use USMT 3.0 to capture user state on Windows XP. Use USMT 3.0 to restore user state on Windows Vista. Is it a correct way?

- A. YES
- B. NO

Answer: A

QUESTION 99

You work as the Desktop support technician at Company.com. The Company.com network consists of a single Active Directory domain named Company.com. You have been instructed to deploy Microsoft Windows Vista operating system on the Company.com client computers. To this end you used ImageX to create a Windows reference image in the .wim format. Now you need to ensure that changes can be made to the existing .wim file without having to create a new .wim file. You need to carry out this task with the least amount of administrative effort. What should you do?

- A. Use Windows Explorer to open the .wim file.
- B. First take the image offline prior to editing the image.
- C. Register the WIN FS Filter driver on your computer.
- D. Install System Management Server (SMS) 2003 and port this file on this server.

Answer: C

QUESTION 100

You are working for Company.com. You plan to use SMS OS Deployment (OSD) Feature Pack to upgrade from Windows XP to Windows Vista. The upgrade fails to complete. What should you do to find the failure reason?

- A. Check the application log on the failed client computer.
- B. Check the SMS Site Server log file.
- C. Add the /Debug:True switch to OS Package then update the OS Package.
- D. Check the OSD deployment log file.

Answer: C

QUESTION 101

You work as the Desktop support technician at Company.com. The Company.com network consists of a single Active Directory domain named Company.com. You have been instructed to deploy Microsoft Windows Vista operating system on all the Company.com client computers. To this end you decide to make use of Windows Deployment Service (WDS) to complete the task. Following is the procedure that you followed:

1. You install WDS on the WDS server.
 2. You decide to create a reference computer image to deploy Windows Vista.
 3. You then create a reference computer as the basis for the Windows Vista image.
- Now you need to decide on the next logical action that you should take to complete the process. What should you do?

- A. On the reference computer run the Sysprep utility with the /OOBE and /Generalize switches from the command prompt.
- B. On the reference computer run the Setupmgr utility with the /OOBE and /Generalize switches from the command prompt.
- C. On the reference computer run the Pkgmgr utility with the /OOBE and /Generalize switches from the command prompt.
- D. On the reference computer run the ImageX command with the /OOBE and /Generalize switches from the command prompt.

Answer: A

QUESTION 102

You are working for Company.com and you have a custom Windows Vista image. There are several new computers contain network adapters that require drivers not included in your Windows Vista image. How to ensure that the network adapters will function correctly on the new computers after Windows Vista is installed?

- A. Add the network card drivers to the out-of-box Drivers folder on the distribution share.
- B. Create a custom build of Windows PE. Ensure the custom build of Windows PE contains the network card drivers.
- C. Copy the drivers to the out-of-box folder.
- D. Use the PGKMGR command to add the drivers to the Windows Vista image.

Answer: D

QUESTION 103

You work as the Desktop support technician at Company.com. The Company.com network consists of a single Active Directory domain named Company.com. You have been instructed to upgrade all the Company.com Microsoft Windows XP Professional computers to Microsoft Windows Vista operating system. There are currently two Windows XP based computers that have already been upgraded to Windows Vista successfully. Thus you now need to automate the upgrade of all the other Windows XP computers to Windows Vista. To this end you need to create an answer file ensuring configuration uniformity. What should you do? (Each correct answer

presents part of the solution. Choose TWO.)

- A. Use ImageX.
- B. Use the System Preparation (Sysprep) tool.
- C. Install Windows Automated Installation Kit (WAIK).
- D. Use Windows System Image Manager (Windows SIM).
- E. Use Windows Preinstallation Environment (Windows PE).

Answer: C, D

QUESTION 104

You are working for Company.com. You are upgrading client computers configured with two partitions to Windows Vista. How to configure an unattended setup answer file for Windows Vista to ensure that all client computers have only one disk partition?

- A. It is impossible.
- B. Add FSUTIL to the WINPESHL.INI file
- C. Add a DiskConfiguration entry to the Pass7 C oobeSystem section of the unattended setup answer file.
- D. Add a DiskConfiguration entry to the Pass1 C windowsPE section of the unattended setup answer file.

Answer: D

QUESTION 105

You work as the Desktop support technician at Company.com. The Company.com network consists of a single Active Directory domain named Company.com. You have been instructed to deploy Microsoft Office 2007 from a network distribution point to all the Company.com client computers. One requirement that the Company.com management wants to implement is to have the Office 2007 deployment contain five different language packs. These languages are English, Japanese, Hungarian, German and French. The Windows user locale for each Company.com client computer contains only the English language pack in the regional and Language Options container in the Control Panel. You have been assigned a trainee named Amy Walsh. Now Amy Walsh wants to know what will happen when you run the Setup. What should you do?

- A. Inform Amy Walsh that the installation will fail.
- B. Inform Amy Walsh that the installation will work with all five language packs.
- C. Inform Amy Walsh that the installation will work with the English language pack.
- D. Inform Amy Walsh that she will then be prompted to select the appropriate language pack.

Answer: C

QUESTION 106

You work as the Desktop support technician at Company.com. The Company.com network consists of a single Active Directory domain named Company.com. You have been instructed to deploy Microsoft Windows Vista operating system on all the Company.com client computers.

You are required to automate the deployment of Windows Vista on the client computers.

Following is a description of the procedure that you followed:

1. You make use of Windows System Image Manager (SIM).
2. You create a file named Autounattend.xml.
3. You save Autounattend.xml on a Universal Serial Bus (USB) drive under the folder named \Unattend.
4. You set the boot order in the BIOS to boot from the CD/DVD drive.
5. You initiate the installation.

However, the unattended installation fails to start. Now you need to address the issue.

What should you do?

- A. Modify the existing boot order to boot from the USB drive.
- B. The Autounattend.xml file should be renamed to Unattend.txt.
- C. The Autounattend.xml file should be renamed to Unattend.xml.
- D. The Autounattend.xml file should be moved to the root of the USB drive.

Answer: D

QUESTION 107

You are working for Company.com. You create a custom Windows Vista image. The HR department would like all games removed from the image and all games removed from computers already installed the custom Windows Vista image. Then you use the PKGMGR command to remove the games from the computers which have already installed the image. Use the PKGMGR command to remove the games from the image. Is it a correct way?

- A. YES
- B. NO

Answer: A

QUESTION 108

You work as the Desktop support technician at Company.com. The Company.com network consists of a single Active Directory domain named Company.com. Following is a description of the procedure that you follow while carrying out your duties:

1. You define an application installation order in the task sequence of BDD Workbench.
2. You created a distribution point with the required applications.
3. You assume that the custom application that appears in the application list is already installed on the target computers. However, you want to ensure that these applications are installed in the event of it being missing from any of the target computers without disturbing the current installation. You need to complete this task with the least amount of administrative effort. What should you do?

- A. Manually check and install the application on target computers.
- B. Configure BDD Workbench to overwrite the existing installation.
- C. Create another custom reference image and redeploy it on computers that lack the custom application.

D. Do nothing. BDD Workbench will automatically detect the installation and will skip the installation if the application is already present on the target computer.

Answer: D

QUESTION 109

You work as the Desktop support technician at Company.com. The Company.com network consists of a single Active Directory domain named Company.com. You have been instructed to deploy several applications on all the Company.com client computers. Following is a description of the procedure that you follow while carrying out your duties:

1. You make use of BDD Workbench to create a reference image.
2. You use this reference image for mass deployment.
3. You add the required applications to the distribution point.

Now you need to ensure that the applications are installed in a specific order using the least amount of administrative effort. What should you do?

- A. The application settings should be defined in the task sequence.
- B. The applications should manually be installed in the reference image.
- C. The Unattend.xml file should be modified with the appropriate settings.
- D. A reference build should be created and the applications should be installed after image deployment.

Answer: A

QUESTION 110

You are working for Company.com. You are installing Windows Vista on computers that do not support network booting using PXE. How to ensure that users are not prompted for input when they install Windows Vista on these computers?

- A. Copy an unattended setup installation file to the sysvol shared folder.
- B. Copy an unattended setup installation file named autounattend.xml to a USB flash drive (UFD) device. Ensure the UFD device is plugged into the computer when Windows Vista is installed.
- C. Copy an unattended setup installation file named unattend.xml to the root of the installation media.
- D. Add an unattended setup installation file named unattend.xml to the Build\$ share on a WDS server.

Answer: B

QUESTION 111

You work as the Desktop support technician at Company.com. The Company.com network consists of a single Active Directory domain named Company.com. You have been instructed to deploy Microsoft Office 2007 on several of the Company.com client computers. Following is a description of the procedure that you follow while carrying out your duties:

1. You create a distribution point.
2. You create a shared folder named OfficeInstall.

3. You copy the installation files to the root of the shared folder.

Now you want to customize the installation and specify an additional language and thus need to decide what your next step should be. What should you do?

- A. The logon script must be executed.
- B. The Config.xml file should be edited.
- C. The Customization file should be created.
- D. The files on the local computers should be cached.
- E. The installation files should be distributed by running the Setup.

Answer: C

QUESTION 112

You work as the Desktop support technician at Company.com. The Company.com network consists of a single Active Directory domain named Company.com. You have been instructed to deploy Microsoft Office 2007 on several the Company.com client computers. You must create a customized Office 2007 system installation. And need to integrate the Microsoft Office 2007 installation with the Business Desktop Deployment Workbench. To this end you need to follow several steps. Following is a description of the procedure that you follow while carrying out your duties:

- 1. You create a distribution point
- 2. You create a custom file using setup command with the /admin switch.
- 3. You apply the required settings.

Now you need to make a decision as to what your next step should be.

What should you do?

- A. You must define the product to install.
- B. You must create the customization file for installation.
- C. You must define the Product Key in BDD Workbench.
- D. You must add the application into the BDD Workbench.

Answer: D

QUESTION 113

You work as the Desktop support technician at Company.com. The Company.com network consists of a single Active Directory domain named Company.com. You have been instructed to deploy Microsoft Office 2007 on several the Company.com client computers. You have just deployed Windows Vista on all the Windows XP-based Company.com client computers. To complete the task at hand you thus need to deploy Microsoft Office on all Windows Vista-based client computers. Now you need to configure the installation of Microsoft Office 2007 and need to take the next logical step. What should you do?

- A. You must customize the Office 2007 system.
- B. You must configure user settings for the 2007 Office system.
- C. You must create a network installation point for the 2007 Office system.
- D. You must create different configurations of the 2007 Office system for different groups of

users.

Answer: C

QUESTION 114

You work as the Desktop support technician at Company.com. The Company.com network consists of a single Active Directory domain named Company.com. You have been instructed to deploy Microsoft Windows Vista operating system on all the Company.com computers. To this end you are use Business Desktop Deployment (BDD) Workbench to prepare the Windows PE CD. Now you need to modify the Windows PE image and need to decide on the appropriate action to take. What should you do?

- A. You must right-click `osd_deployment_point` and click Update.
- B. Navigate to the Windows source box and select `windows_source`.
- C. Navigate to the Windows PE source box and select `windows_pe_source`.
- D. Navigate to the Driver Injection section in the Driver group box and select `driver_group`.

Answer: A

QUESTION 115

You are working for Company.com. You plan to upgrade from Windows XP to Windows Vista. You will also migrate user state from Windows XP to Windows Vista. Your company uses a custom application that creates files with a .FRM extension. Which file should you edit to ensure that files created are included in the user state during the migration?

- A. `attend.xml`
- B. `unattend.xml`
- C. `MigApp.xml`
- D. `MigUser.xml`.

Answer: D

QUESTION 116

You work as the Desktop support technician at Company.com. The Company.com network consists of a single Active Directory domain named Company.com. You have been instructed to upgrade all the Company.com Windows XP -based computers to Microsoft Windows Vista operating system. To this end you decide to create a customized version of Windows PE to automate the Zero Touch Installation (ZTI) deployment process by making use of the System Management Server (SMS) 2003 operating system deployment (OSD) Feature Pack. You thus need to take a decision as to what your next step should be to ensure that you initiate Windows PE automatically using the Deployment Workbench. What should you do?

- A. You should add WMI Support to the Windows PE image.
- B. You should configure Deployment Points in the BDD Workbench.
- C. You should add support to Windows PE for additional network adapters.

D. You should customize Windows PE image by modifying the Winbom.ini file in Notepad.

Answer: B

QUESTION 117

You work as the Desktop engineer at Company.com. The Company.com network consists of a single Active Directory domain named Company.com. All computers on the Company.com network are running Microsoft Windows XP Professional and are running a custom application. You have been instructed to upgrade all the Company.com client computers to Microsoft Windows Vista operating system. You need to ensure custom application compatibility and to this end you make use of the Application Compatibility Toolkit (ACT). You then proceed to create the necessary application compatibility fix database and installed the application compatibility fix. After a successful upgrade to Windows Vista, Company.com management made a decision to purchase a new custom application. This application is to replace the current custom application. You are thus required to remove the application compatibility fix for the current custom application prior to installing the new application on all the Company.com client computers. You need to take a decision as to what you should do prior to installing the new custom application. What should you do?

- A. You should use the Standard User Analyzer tool.
- B. You should use the SDBINST.EXE command.
- C. You should run the Compatibility Administrator program.
- D. In Control Panel you should use the Uninstall a Program option.

Answer: D

QUESTION 118

You work as the Desktop support technician at Company.com. The Company.com network consists of a single Active Directory domain named Company.com. You have been instructed to deploy Microsoft Windows Vista operating system on all the Company.com client computers. In addition you also received instruction to deploy a security update on the Windows Vista computers. You thus need to test the compatibility issues regarding the security update with other programs whilst using the least amount of administrative effort.' What should you do?

- A. The Virtual PC 2007 should be deployed.
- B. The Program Compatibility Wizard should be run.
- C. The Program Compatibility Assistant should be run.
- D. The Application Compatibility Toolkit (ACT) should be installed.

Answer: D

QUESTION 119

You work as the Desktop support technician at Company.com. The Company.com network consists of a single Active Directory domain named Company.com. You have just completed the deployment of Microsoft Windows Vista operating system on all the Company.com Windows XPbased computers. You make use of Application Compatibility Toolkit (ACT) 5.0 when carrying out

your duties. You need to make a decision as to which compatibility evaluators you should use to identify the applications installed within Company.com. What should you do?

- A. Use the Update Compatibility Evaluator (UCE).
- B. Deploy the Inventory Collector compatibility evaluator.
- C. Use the Internet Explorer Compatibility Evaluator (IECE).
- D. Use the User Account Control Compatibility Evaluator (UACCE).

Answer: B

QUESTION 120

You work as the Desktop engineer at Company.com. The Company.com network consists of a single Active Directory domain named Company.com. A client computer named Company.com - WS624 has been assigned to you. Company.com - WS624 is configured with Windows XP Professional Service Pack (SP) 2. You make use of the Application Compatibility Toolkit (ACT) 5.0 to carry out your duties. You installed SQL Server 2005 Express Edition (SQL-Express) on Company.com - WS624. You then define a share named SharedFolder on Company.com - WS624. SharedFolder was the Windows XP firewall enabled. You have configured Log Processing Service share to connect to SQL Server on Company.com - WS624. Now you need to ensure that you will be able to configure Log Processing Service share without compromising security. What should you do?

- A. Windows Firewall should be disabled.
- B. Log Processing Service should be restarted.
- C. File Sharing should be enabled in Windows Firewall.
- D. The local Administrator account must be assigned the permission to start Log Processing Service.

Answer: C

QUESTION 121

You work as the Desktop engineer at Company.com. The Company.com network consists of a single Active Directory domain named Company.com. A server named Company.com - SR02 runs SQL Server 2005. Company.com - SR02 hosts a database named DAT

A. A client computer named Company.com - WS624 has been assigned to you. Company.com - WS624 is configured with Windows XP Professional Service Pack (SP) You make use of the Application Compatibility Toolkit (ACT) 5.0 to carry out your duties. Following is a description of the procedure that you followed:

1. You configure the Local System account to run as the Log Processing Service.
2. You connect to Company.com - SR02.
3. You connect to DATA.
4. You assign a share named DATALOG.

You need to ensure that all your data is saved in Company.com - SR02. What should you do?

- A. Ensure that the local Administrator account has read and write access to DATALOG as part of

the configuration process.

B. Ensure that domain\computername\$ has read and write access to DATALOG as part of the configuration process.

C. Ensure that a local user account is created and assigned access to DATALOG as part of the configuration process.

D. Ensure that all user accounts on all computers are running the data collection package have read and write access to DATALOG as part of the configuration process.

Answer: B

QUESTION 122

You work as the Desktop engineer at Company.com. The Company.com network consists of a single Active Directory domain named Company.com. You received instructions to port an application from Microsoft Windows XP to Microsoft Windows Vista. Before you can comply with this instruction you need to detect application permission issues prior to porting the application to Windows Vista. What should you do?

A. The Setup Analysis Tool (SAT) should be deployed.

B. The Standard User Analyzer (SUA) should be deployed.

C. The Internet Explorer Compatibility Evaluator (IECE) should be deployed.

D. The User Account Control Compatibility Evaluator (UACCE) should be deployed.

Answer: D

QUESTION 123

You are working for Company.com. You create a customized build of Windows PE. How to create an HTML document including your welcome message to users of this customized build?

A. Add the WinPE-XML package to your Windows PE build. Add the path to the HTML file to the WINPESHL.INI file.

B. Add the HTML file to the Windows\Branding folder in your Windows PE build.

C. Add the path to the HTML file to the WindowsShell.Manifest file in your Windows PE build.

D. Add the WinPE-HTA package to your Windows PE build. Add the path to the HTML file to the startnet.cmd file.

Answer: D

End of Document