



Exam : 050-692

Title : ZENWorks 6.5 Desktop Management

Ver : 11-12-2008

QUESTION 1:

Which type of ZENworks Personality Migration saves the personality in a file which can be then transferred to a different computer?

- A. Imaged migration
- B. Hosted migration
- C. Stored migration
- D. Delayed migration
- E. Deferred migration
- F. Real-time migration
- G. Suspended migration

Answer: E

QUESTION 2:

Which type of policy package contains the Workstation Import policy?

- A. User policy package
- B. Server policy package
- C. Container policy package
- D. Workstation policy package
- E. Service Location policy package

Answer: B

QUESTION 3:

Which file can you edit on the managed workstation to configure the TCP port used by the Remote Management Agent?

- A. Rm.cfg
- B. Zrm.ini
- C. Rmcfg.ini
- D. ZenRm.cfg
- E. Remote.ini
- F. RemMan.cfg

Answer: C

QUESTION 4:

To configure user-defined policies using the ADM files for workstation objects, which policy do you configure?

- A. iPrint
- B. Remote control
- C. Computer extensible
- D. Workstation imaging
- E. ZENworks Desktop Management agent

Answer: C

QUESTION 5:

Which eDirectory object do you use to generate Inventory reports in ConsoleOne?

- A. User
- B. Server
- C. Workstation
- D. Inventory server
- E. Inventory database
- F. User policy package
- G. Workstation policy package

Answer: E

QUESTION 6:

You're configuring a container login script in your eDirectory tree to automatically distribute the ZPMS Update Agent to your users' workstations. You've copied the Update Agent files from the Update Server to the Sys:\Public directory on your DA1 NetWare 6.5 server. Which file should you call from within your login script to install the Update Agent?

- A. Setup.bat
- B. NetInstall.bat
- C. ZPMSAgent.msi
- D. UpdateAgent.bat
- E. ZPMSUpdateAgent.exe
- F. ZENUUpdateAgentInstall.bat

Answer: B

QUESTION 7:

You're configuring a Remote Control session with a remote managed workstation over a slow connection. Which Color Quality option should you choose for best performance?

- A. Normal
- B. 8 colors
- C. Greyscale
- D. 16 colors
- E. 256 colors
- F. 64k colors

Answer: D

QUESTION 8:

Which Novell application launcher (NAL) settings are applied if custom settings for the user object and it's parent container are configured?

- A. The default settings only
- B. The container's custom settings only
- C. The user's custom settings will override any conflicts
- D. The container's custom settings will override any conflicts

Answer: C

QUESTION 9:

Which file system rights should users have to the Personality Migration Personality

Store directory on your NetWare server? (Choose 4.)

- A. Read
- B. Erase
- C. Write
- D. Create
- E. Modify
- F. File Scan
- G. Access Control

Answer: A,C,D,F

QUESTION 10:

User MHoffmann.LEADS.SALES.SLC.DA is a member of the ProjectLeads.DA group. You have associated a user policy package with the DA container that configures user desktops to use the Corplogo.bmp background. You've also associated a user policy package with the SALES.SLC.DA container that configures user desktops to use the Corplogo2.bmp background. You've also associated a user policy package with ProjectLeads.DA that configures user desktops to use the Corplogo3.bmp background. When MHoffmann logs in, which background will be applied to her workstation?

- A. Corplogo.bmp
- B. Corplogo2.bmp
- C. Corplogo3.bmp
- D. The container and group associations are in conflict and, therefore, no background will be applied.

Answer: C

QUESTION 11:

Which tasks can the ZENworks 6.5 Desktop Management Remote Management service accomplish? (Choose 3.)

- A. Remotely boot a powered-off managed workstation.
- B. Remotely blank out the managed workstation's screen.
- C. Remotely run executables on the managed workstation.
- D. Remotely modify the managed workstation's CMOS settings.

E. Remotely access the SCSI ROM BIOS on workstations with SCSI adapters.

Answer: A,B,C

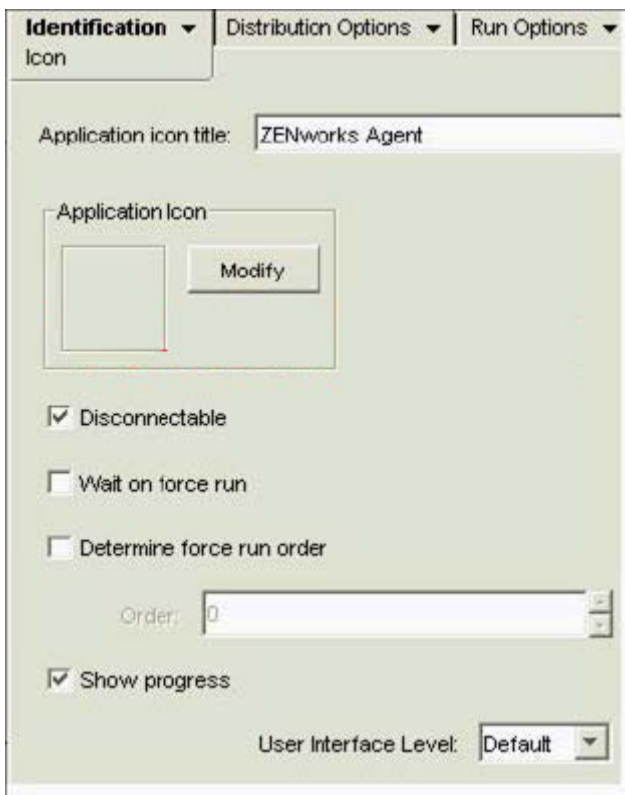
QUESTION 12:

Which utility can be used to create an MST file?

- A. iManager
- B. Schemax
- C. SnAppShot
- D. ConsoleOne
- E. AdminStudio

Answer: E

QUESTION 13:

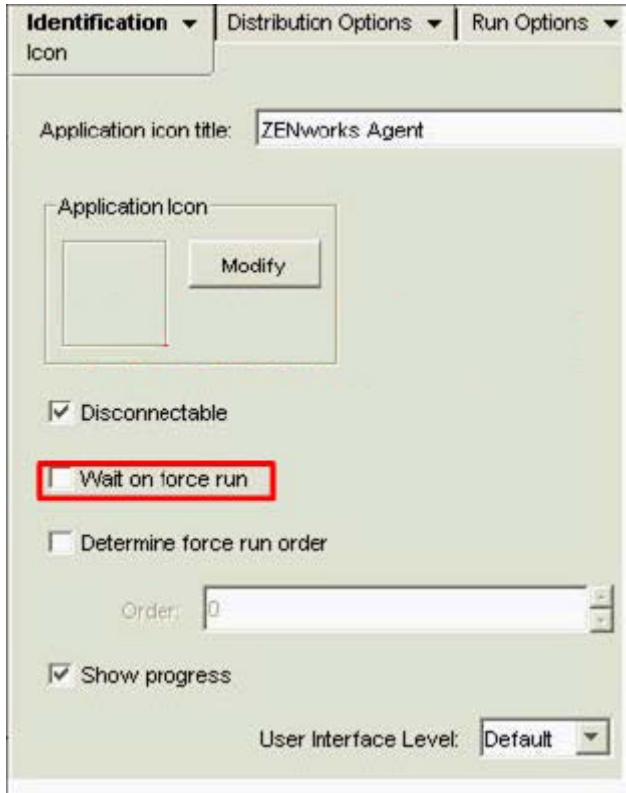


Click the option you would use to configure the application so that its icon won't

appear until it has been automatically run by NAL after user authentication.

Answer:

Explanation:



QUESTION 14:

You are configuring the Dynamic Local User policy in a user package for users in your eDirectory tree. Company policy dictates that any local user accounts created on workstations by the Dynamic Local User policy must be immediately deleted when users log out. Which type of Dynamic Local User accounts should you configure the policy to use?

- A. Volatile
- B. Temporary
- C. Transient
- D. Nonvolatile
- E. Non-persistent
- F. The Dynamic Local User policy doesn't support this type of account.

Answer: A

QUESTION 15:

You want to configure your Workstation Import policy such that workstation objects are created in the container associated with the Workstation Import policy. Click the option in the Workstation Import policy screen in ConsoleOne that will do this.

Containers | **Platforms** ▼ | Limits | NDS Rig

General

Location | Naming | Groups

☒ Allow importing of workstations

Create workstation objects in:

Server Container

Selected Container

Server Container

User Container

Associated Object Container

Answer:

Explanation:

Containers | **Platforms** ▼ | Limits | NDS Rig

General

Location | Naming | Groups

☒ Allow importing of workstations

Create workstation objects in:

Server Container

Selected Container

Server Container

User Container

Associated Object Container

QUESTION 16:

Which statements are true about NAL application fault tolerance? (Choose 2.)

- A. It is configured to handle server failure.
- B. It is configured to optimize server utilization.
- C. You do not need to create and define application objects.
- D. Duplicate application object files must be stored on a different server.
- E. Duplicate application objects must be stored on the same server as the application objects.

Answer: A,D

QUESTION 17:

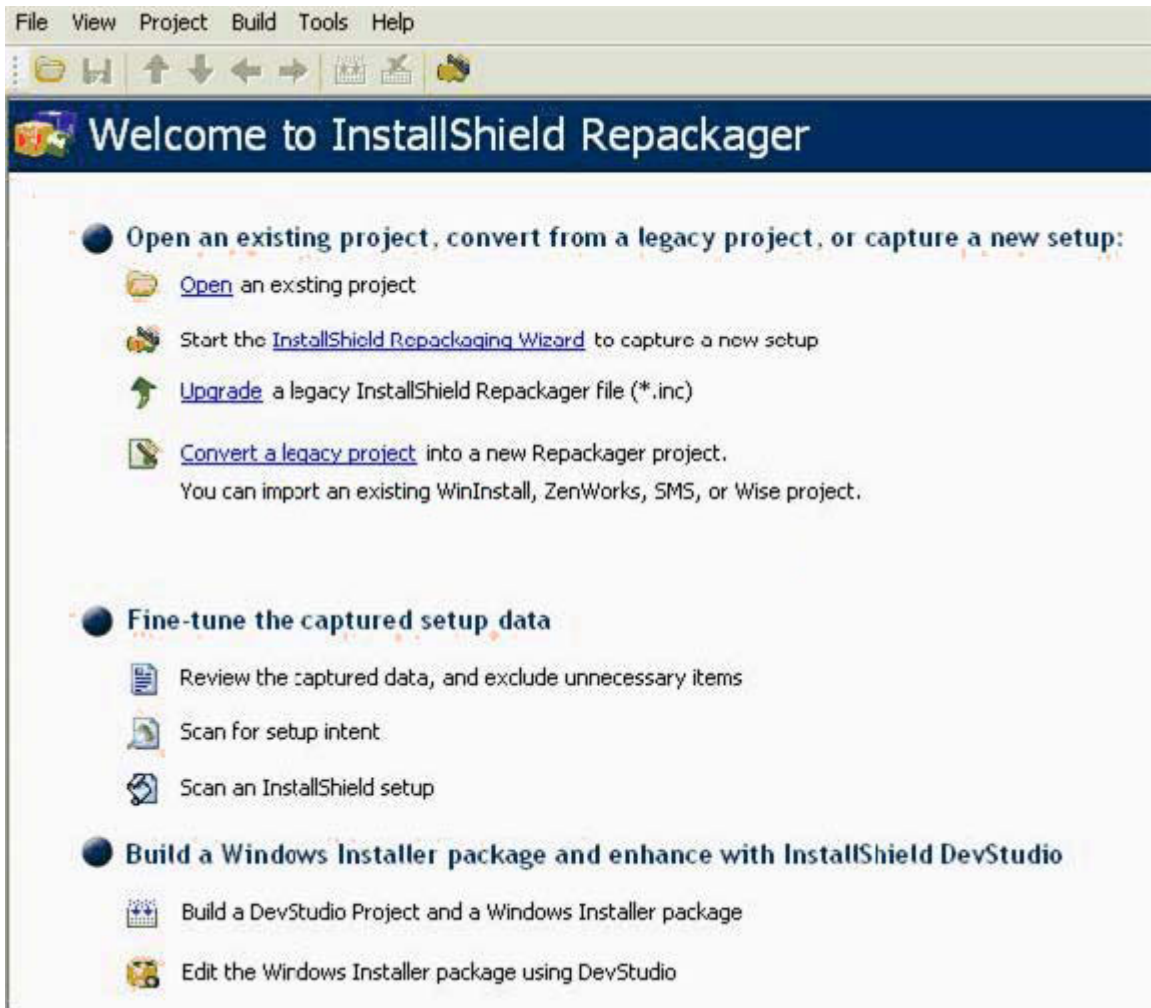
Which objects can you associate with a workstation package? (Choose 3.)

- A. User
- B. Group
- C. Alias
- D. Server
- E. Printer
- F. Profile
- G. Container
- H. Workstation
- I. Workstation Group

Answer: G,H,I

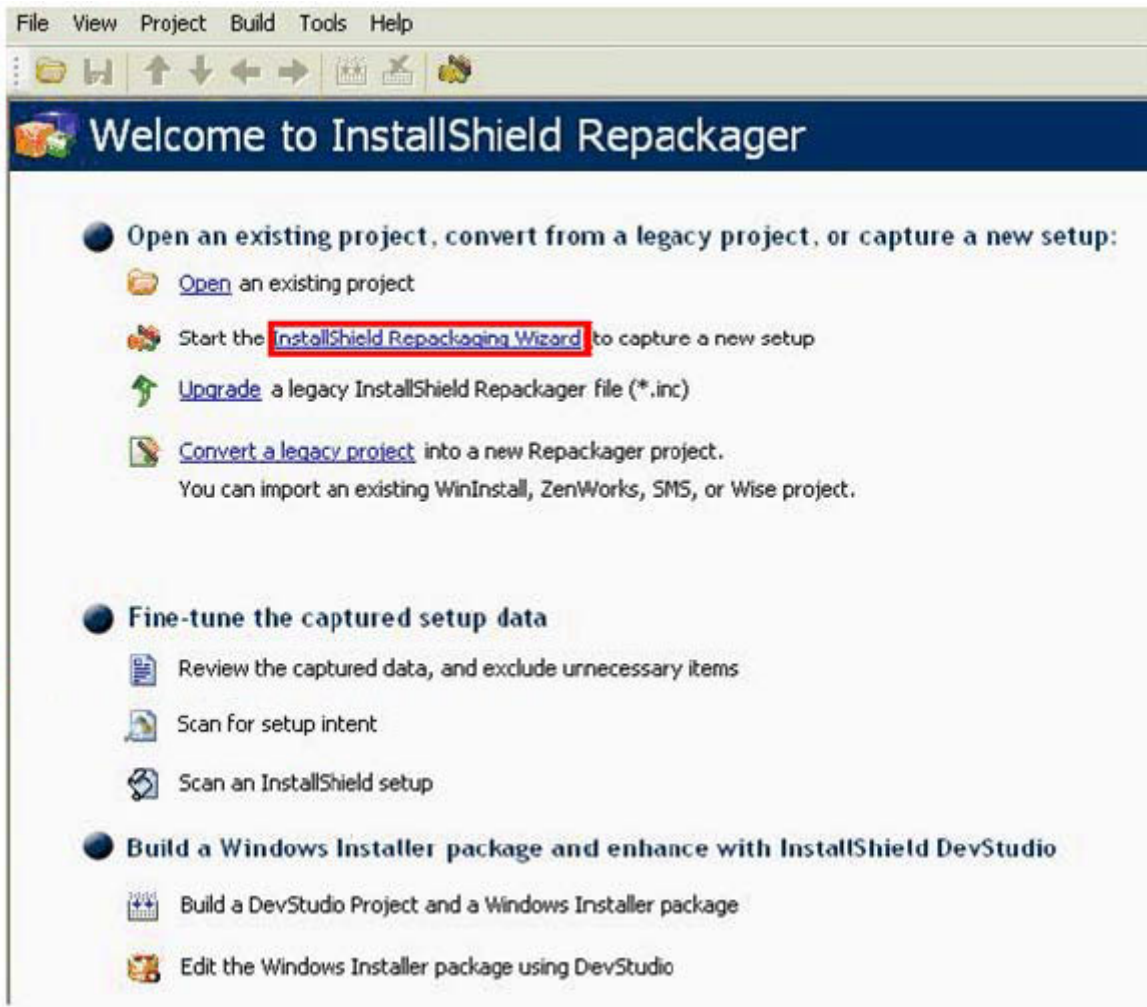
QUESTION 18:

Click the Repackager option you would use to monitor and gather data from a legacy installation routine.



Answer:

Explanation:



QUESTION 19:

Which parameter in the Settings.txt file is used to specify the address of your Imaging server?

- A. IPADDR
- B. SERVER
- C. PXEADDR
- D. TFTPSRVR
- E. PROXYADDR
- F. PXESERVER
- G. SERVERADDR
- H. IMAGESRVRADDR

Answer: E

QUESTION 20:

With reference to ZENworks Desktop Management imaging, which term refers to an archived collection of files to be added to an existing Windows installation on target workstation without overwriting the existing hard drive contents? (Choose 2.)

- A. Add-on image
- B. File-only image
- C. Workstation image
- D. Application overlay
- E. Image-safe data area
- F. Application transform

Answer: A,D

QUESTION 21:

Which statements are true about ZENworks 6.5 Desktop Management site lists? (Choose 2.)

- A. The Novell Client must be installed to use them.
- B. They must be configured differently depending on which client is being used.
- C. Users can access applications locally even if they authenticate across the WAN.
- D. They can be implemented, regardless of whether users authenticate using the Novell Client or a ZENworks middle-tier server.

Answer: C,D

QUESTION 22:

What must be installed and configured on the server along with the Middle Tier Server in order for it to function? (Choose 2.)

- A. MySQL
- B. Rsync
- C. iSCSI
- D. iManager
- E. NetStorage

- F. A web server
- G. Workstation Imaging
- H. Workstation Inventory

Answer: E,F

QUESTION 23:

You need to deliver applications to your users and workstations that reside in remote locations outside your organization's firewall. What is required to accomplish this using ZENworks 6.5 Desktop Management?

- A. Load Nal.nlm with the -N switch.
- B. Implement the ZENworks Middle-Tier server.
- C. Load Appman.nlm with the -PASSTHROUGH switch.
- D. Enable dynamic NAT passthrough on the server where ZENworks is installed.

Answer: B

QUESTION 24:

You want to configure your DHCP server to deliver an option containing the IP address of your Middle Tier server. Which option description should you use?

- A. Xteir
- B. ZENworks
- C. MiddleTier
- D. XteirAddress
- E. ZENworksAddress
- F. MiddleTierAddress

Answer: B

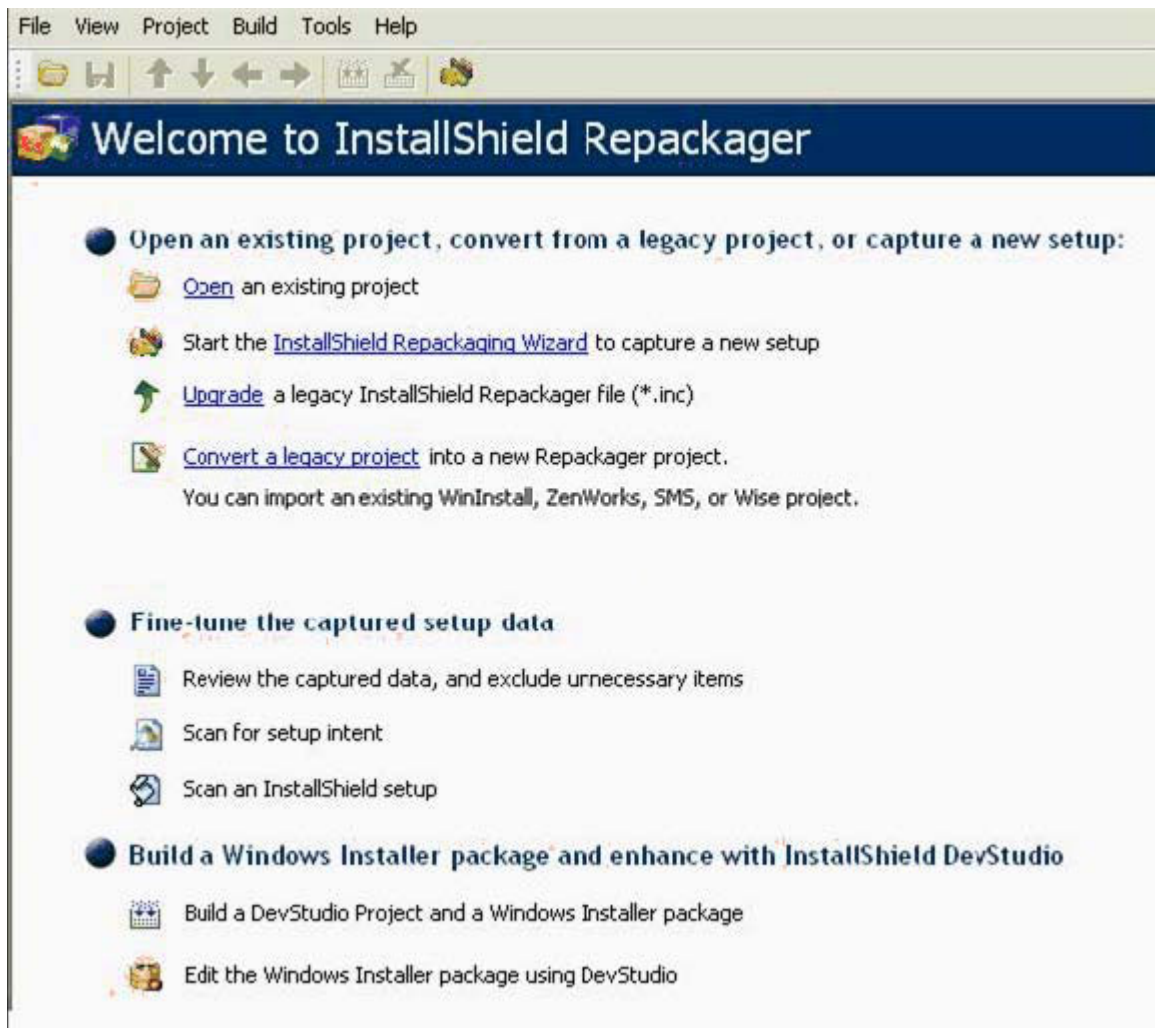
QUESTION 25:

Which policy package is used to configure the Dictionary Update policy?

- A. User policy package
- B. Server policy package
- C. Container policy package
- D. Workstation policy package
- E. Service Location policy package

Answer: B

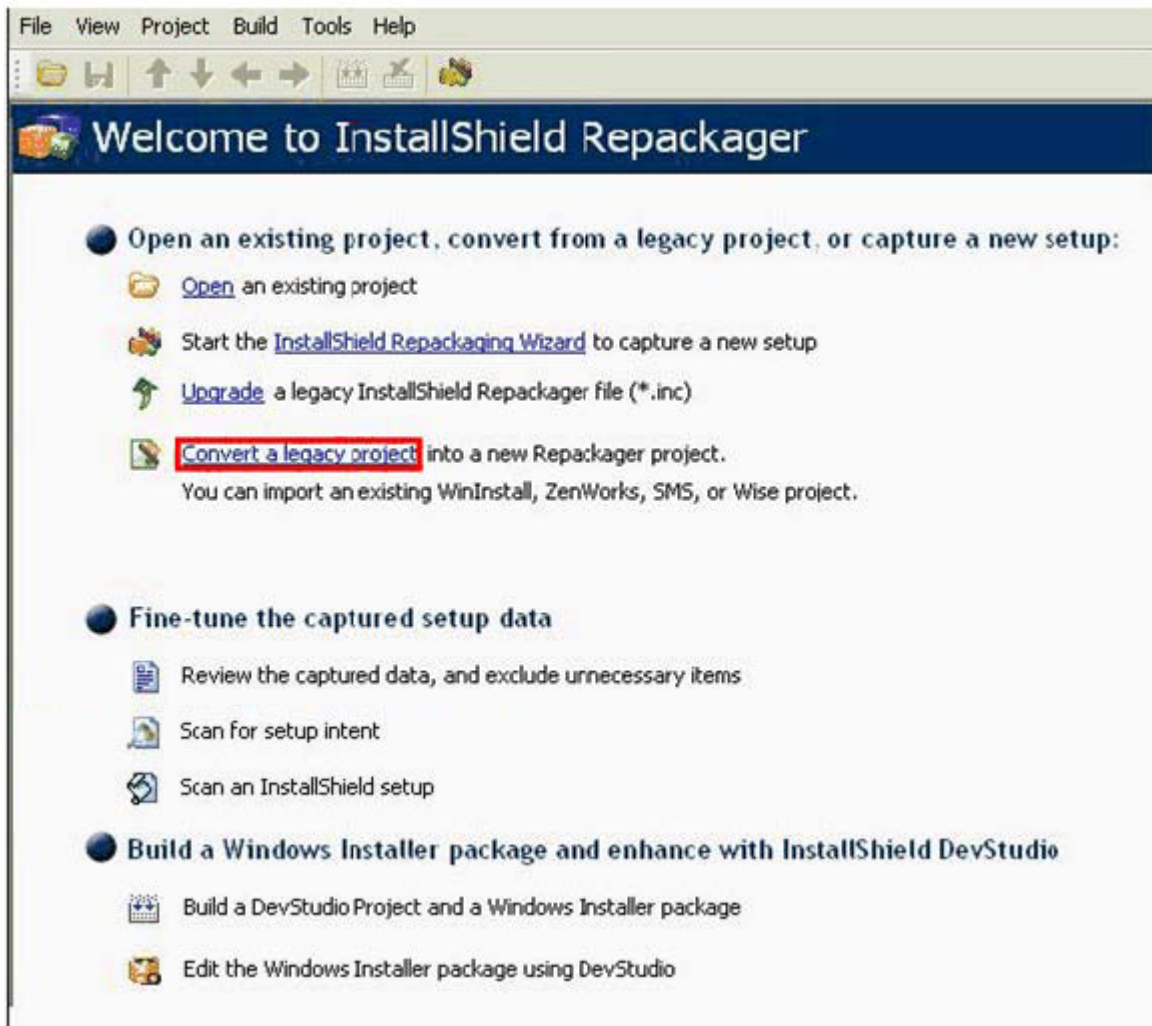
QUESTION 26:



Click the Repackager option you would use to convert an AOT file to an MSI package.

Answer:

Explanation:



QUESTION 27:

When using a registry key to enable workstations to locate your Import server, which values must you create within the zenwsreg key? (Choose 2.)

- A. Zwsreg
- B. ImportKey
- C. ImportPolicy
- D. ImportServer
- E. ZenwsregKey
- F. ZenwsregServer
- G. ZenwsregPolicy

Answer: C,D

QUESTION 28:

Which file launches the ZENworks scheduler for policy management?

- A. SCHED.EXE
- B. PMSCH.EXE
- C. ZENMAN.EXE
- D. WMSCHED.EXE
- E. SCHEDULR.EXE

Answer: D

QUESTION 29:

If you're using the Hosts file or DNS to provide host name resolution for your ZENworks Automatic Workstation Import service, what host name must you configure to resolve to your Import server's IP address?

- A. ZWSREG
- B. ZIMPORT
- C. ZENWSREG
- D. ZWSIMPORT
- E. ZENWSIMPORT
- F. You use your Import server's host name, such as DA1 or NTI-PROVO.

Answer: E

QUESTION 30:

Exhibit:

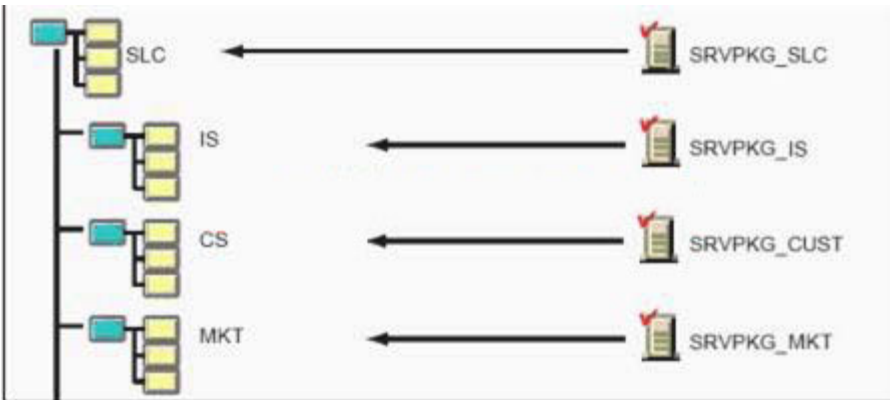


Exhibit:

Your user object is BBell.SLC. Which server package takes precedence when ZENworks determines effective policies?

- A. SRVPKG_IS
- B. SRVPKG_SLC
- C. SRVPKG_MKT
- D. SRVPKG_CUST

Answer: B

QUESTION 31:

You created a server policy package and associated it with a server object. Where are the policies applied?

- A. To all ZENworks back-end servers
- B. To all objects in the tree that are valid types for the package
- C. To all objects on the server that are valid types for the package
- D. To all objects in the container that are valid types for the package

Answer: C

QUESTION 32:

You have decided to use Workstation Inventory in your LAN environment. Your company has 1 department, 5 servers, and 4,500 workstations. For your company, which inventory deployment plan best fits the deployment recommendations?

Exhibit 1

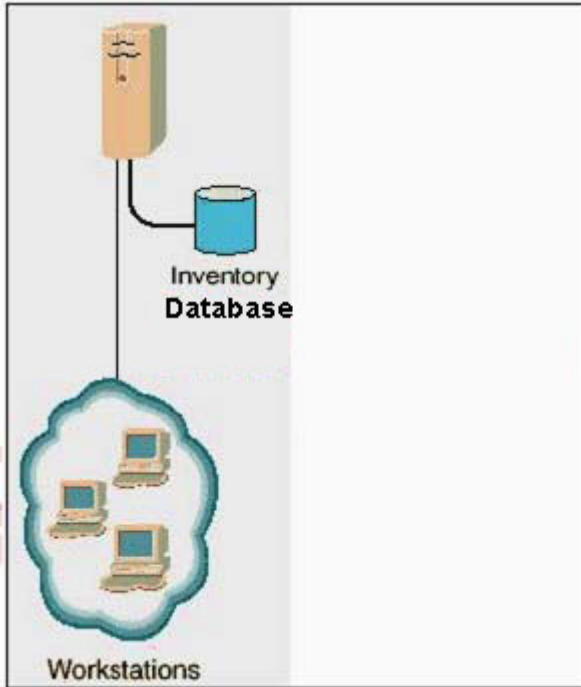


Exhibit 2

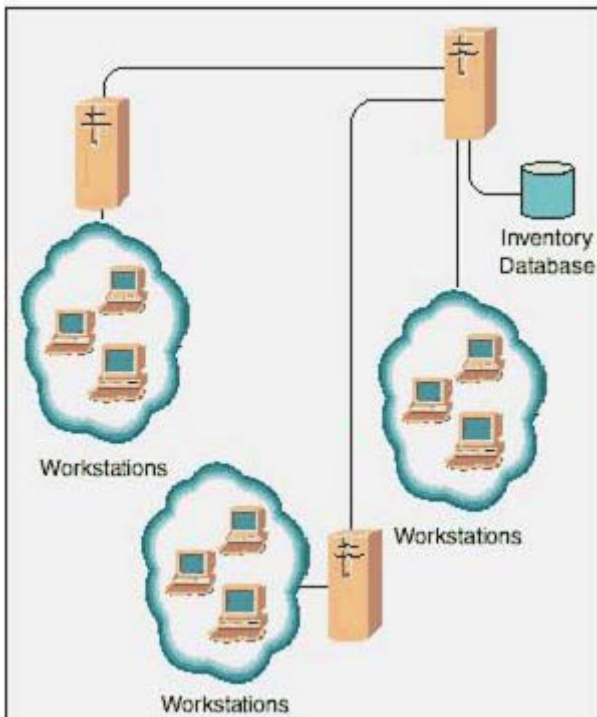


Exhibit 3

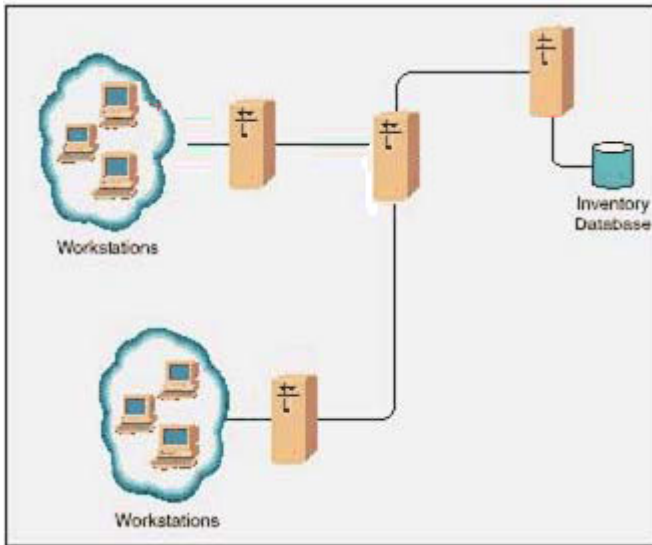
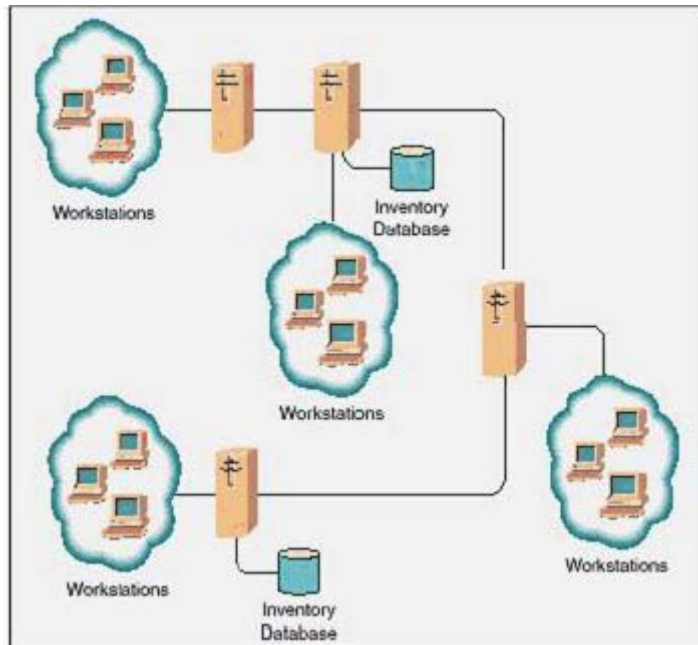


Exhibit 4



- A. Exhibit 1
- B. Exhibit 2
- C. Exhibit 3
- D. Exhibit 4

Answer: A

QUESTION 33:

Which property page of a NAL application object can you use to configure a lights-out distribution of the application to user workstations?

- A. Options
- B. Registry
- C. Identification
- D. Icons/Shortcuts
- E. Application Files
- F. Distribution Scripts
- G. Pre-Install Schedule
- H. Pre-Distribution Process Termination

Answer: G

QUESTION 34:

The ZENworks 6.5 Desktop Management web services architecture is comprised of the Back-end server and which other components? (Choose 2.)

- A. Middle tier
- B. Novell Client
- C. Workstation agents
- D. VPN (Virtual Private Network)

Answer: A,C

QUESTION 35:

DRAG DROP

Rank the default precedence of each policy package in order, from highest to lowest.

Policy Packages	Default Precedence Order Highest to Lowest
A package associated with a group object	Place highest precedence here
A package associated with a container object	Place middle precedence here
A package associated with an individual object	Place lowest precedence here

Answer:

Explanation:

Default Precedence Order Highest
to Lowest

A package associated with a individual object

A package associated with a group object

A package associated with a container object

QUESTION 36:

Which eDirectory design guidelines are important for ZENworks to perform at its best? (Choose 2.)

- A. Design the tree to maximize tree walking.
- B. Create partitions according to geographic location.
- C. Place application objects close to the users that access them.
- D. Associate policy package objects at the OU level and higher in the eDirectory tree.

Answer: B,C

QUESTION 37:

You want to enable logging for your Automatic Workstation Import service so you can monitor import activities in a logger screen on your Import server's console. Which file must you edit to modify the log file level?

- A. Sys:\Etc\Wsimport.cfg
- B. Sys:\Etc\Wsimport.conf
- C. Sys:\System\Zenwsimp.ncf
- D. Sys:\System\Zenwsimp.cfg
- E. Sys:\Zenworks\Wsimport.ncf
- F. Sys:\Zenworks\Zenwsimp.cfg

Answer: C

QUESTION 38:

Which ZENworks Preboot Services component is queried by the Preboot Services client to see if the PXE menu should be displayed on the workstation?

- A. DHCP Server
- B. TFTP Server
- C. PDHCP Server
- D. MTFTP Server
- E. DiNIC Transaction Server

Answer: E

QUESTION 39:

Which server package policy should you create to remotely turn on a workstation to allow a software upgrade?

- A. Rollup policy
- B. Wake-on-LAN policy
- C. Imaging server policy
- D. Workstation update policy

Answer: B

QUESTION 40:

Which ZENworks Patch Management Services component analyzes the patches, hot fixes, service packs, and updates identified on the workstations in your network and then uses that information to create a network profile?

- A. Web Console
- B. Update Agent
- C. Update Server
- D. Subscription Service
- E. iManager ZMPS plug-in

- F. ZMPS ConsoleOne plug-in
- G. Desktop Management Agent

Answer: C

QUESTION 41:

In relation to ZENworks 6.5 Desktop Management, which components are required to perform a workstation imaging operation? (Choose 3.)

- A. An imaging engine
- B. An image proxy server
- C. A Linux supported network card
- D. A workstation with a fixed IP address
- E. A workstation with a newly formatted hard disk

Answer: A,B,C

QUESTION 42:

Which type of reporting is most appropriate when you need Novell application launcher (NAL) to report events for users located outside your firewall?

- A. XML
- B. Database
- C. Log to file
- D. SNMP Trap

Answer: A

QUESTION 43:

Which port does the ZENworks 6.5 Desktop Management Imaging proxy server run on? (Choose 2.)

- A. 80
- B. 223
- C. 224

- D. 443
- E. 997
- F. 998
- G. 8008
- H. 8009

Answer: E,F

QUESTION 44:

Click the application pre-installation option you would set if you don't want multiple workstations installing the same application at the same time.

☒ Pre-Install application

Schedule Type: **Range of days**

Date Range

Start Date End Date

Select the day(s) the schedule will activate:

Sun	Mon	Tue	Wed	Thu	Fri
-----	-----	-----	-----	-----	-----

Time for selected range

Start Time: End Time:

Spread from start time (in Minutes)

☐ Use this schedule in GMT for all clients

Answer:

Explanation:

☒ Pre-Install application

Schedule Type: **Range of days**

Date Range

Start Date: 9/11/04 End Date: 9/11/04

Select the day(s) the schedule will activate:

Sun Mon Tue Wed Thu Fri

Time for selected range

Start Time: 00:00 (12:00AM) End Time: 00:00 (12:00AM)

Spread from start time (in Minutes): 0

☐ Use this schedule in GMT for all clients

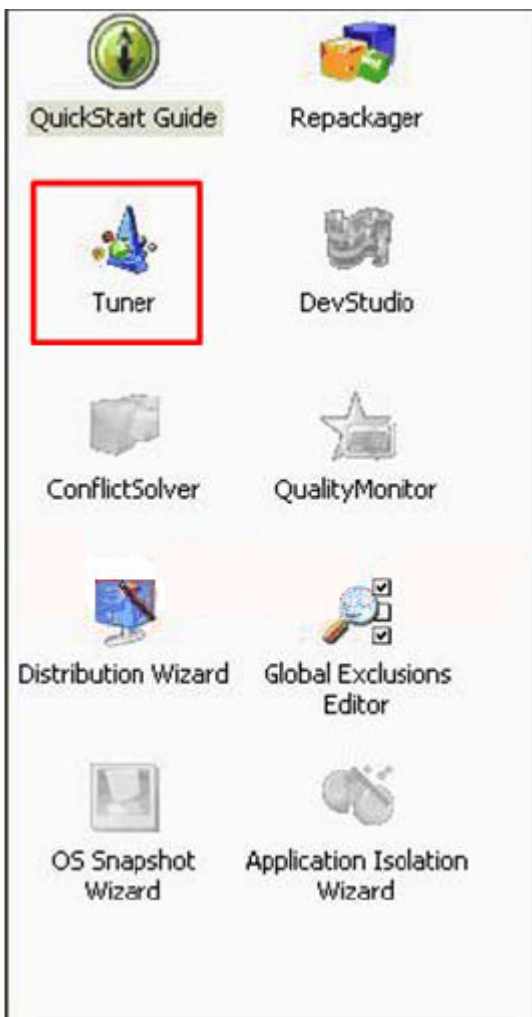
QUESTION 45:

Click the component of InstallShield AdminStudio you would use to create a transform of an existing MSI package.



Answer:

Explanation:



QUESTION 46:

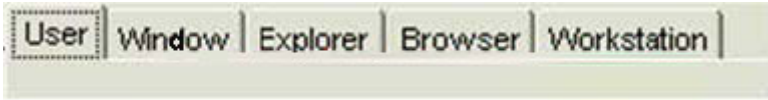
Which server is the lowest-level inventory server in the inventory tree hierarchy?

- A. Top server
- B. Leaf server
- C. Root server
- D. Terminal server
- E. Standalone server

Answer: B

QUESTION 47:

Click on the Launcher Configuration tab you would use if you wanted to configure NAL to shut down if a user closes her browser window instead of exiting Application Browser on her workstation.



Answer:

Explanation:



QUESTION 48:

Which ActiveX control file is loaded by the Myapps.html file when a user accesses the NAL Application Browser URL?

- A. Nalserver.dll
- B. Axappserver.dll
- C. Appbrowser.dll
- D. Nalbrowser.dll
- E. Axnalserver.dll

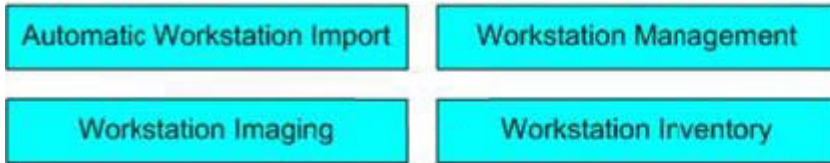
Answer: E

QUESTION 49:

DRAG DROP

Match each ZENworks back-end service with the correct description.

Back-end Services



Description

Place here	Allows you to configure a workstation based on policies or a user login
Place here	Gathers hardware and software information for all managed workstations on the network
Place here	Allows you to take a file-by-file copy of the workstations OS, applications, and data files to be saved and restored to another workstation
Place here	Provides management of a workstation's lifecycle, from object creation to removal

Answer:

Explanation:

Description

Automatic Workstation Import	Allows you to configure a workstation based on policies or a user login
Workstation Inventory	Gathers hardware and software information for all managed workstations on the network
Workstation Imaging	Allows you to take a file-by-file copy of the workstations OS, applications, and data files to be saved and restored to another workstation
Workstation Management	Provides management of a workstation's lifecycle, from object creation to removal

QUESTION 50:

DRAG DROP

A user logs into a workstation. Place the processes for applying ZENworks 6.5 Desktop Management user policies in the order they occur.

Policy Processes

ZENworks located the search policy in effect and uses it to find all user policies to be applied

ZENworks applies all user policies that are found, as scheduled

ZENworks determines the user object context

ZENworks finds the schedules for all user policies.

Policies in Order

Place process 1 here

Place process 2 here

Place process 3 here

Place process 4 here

Answer:

Explanation:

Policies in Order

ZENworks determines the user object context

ZENworks **located the search policy in effect and uses it** to find all user policies to be applied

ZENworks finds the schedules for all user policies.

ZENworks applies all user policies that are found, as scheduled

QUESTION 51:

You've just completed installing the ZENworks Middle Tier Server on your NetWare 6.5 server. Your NetWare server's DNS name is da1.da.com. What URL can you use to access the NSAdmin utility to configure your Middle Tier server?

- A. https://da1.da.com:1717
- B. http://da1.da.com/nsadmin.html
- C. http://da1.da.com/oneNet/nsadmin
- D. http://da1.da.com/nps/portal/nsadmin
- E. https://da1.da.com/nps/portal/nsadmin
- F. https://da1.da.com/oneNet/xteir-nsadmin

Answer: C

QUESTION 52:

The ZENworks Database policy in the Service Location policy package allows you to configure the location of which database? (Choose 2.)

- A. MySQL database
- B. Inventory database
- C. Application Management database
- D. NSS Archive and Versioning Services database

Answer: B,C

QUESTION 53:

When creating a NAL disconnected application CD, what file must be at the root of the CD? (Choose 2.)

- A. Nal.exe
- B. Nal-d.exe
- C. Nal-d.ini
- D. RunNAL.ini
- E. RunNAL.exe
- F. Autorun.ini
- G. Autorun.exe

Answer: F,G

QUESTION 54:

You have a number of users who work from home outside your organization's firewall. You've configured their Windows XP Professional workstations with the Desktop Management Agent, but you haven't installed the Novell Client. You don't want your users to be required to authenticate to the eDirectory tree through the Management Agent and to their local workstation, so you've configured their workstations to operate in pass-through mode by not displaying the Middle Tier Server Authentication dialog on startup. To make this configuration work, what else do you need to do?

- A. Configure your LDAP server to allow clear-text passwords.
- B. Configure the Middle Tier Server to communicate on port 80.
- C. Configure the Middle Tier Server to allow dynamic user pass-through.
- D. Enable pass-through mode on your ZENworks 6.5 Desktop Management server.
- E. Configure each users' local user account name and password to match their eDirectory username and password.

Answer: E

QUESTION 55:

Which type of policy package must be used for imaging operations on workstations that haven't been imported into the eDirectory tree?

- A. User policy package
- B. Server policy package
- C. Container policy package
- D. Workstation policy package
- E. Service Location policy package

Answer: B

QUESTION 56:

DRAG DROP

The graphic shows application management tools and their descriptions. Drag and drop the corresponding application to its description. (1 description is not used.)

Application Launcher	Place here	This is a web browser view that displays icons for distributed applications.
Application Explorer	Place here	This is a standalone window that displays icons for distributed applications
Application Browser	Place here	This is a java applet that allows distributed application icons to be displayed on the Start menu, the system tray, and the Quick Launch toolbar
	Place here	This includes a standalone window, such as Novell application launcher, and pieces that integrate with the Windows desktop

Answer:

Explanation:

Application Browser	This is a web browser view that displays icons for distributed applications.
Application Launcher	This is a standalone window that displays icons for distributed applications
Place here	This is a java applet that allows distributed application icons to be displayed on the Start menu, the system tray, and the Quick Launch toolbar
Application Explorer	This includes a standalone window, such as Novell application launcher, and pieces that integrate with the Windows desktop

QUESTION 57:

Which object can a service location package be associated with? (Choose 2.)

- A. User object
- B. Group object
- C. Server object
- D. Country object
- E. Workstation object
- F. Workstation group object
- G. Organizational unit object

Answer: D,G

QUESTION 58:

You're trying to install the ZENworks Middle Tier Server on your NetWare 6.5 server. Your Middle Tier Server will service about 150 users outside the firewall. Your server has 768 MB of RAM and a Pentium III 1.13 GHz CPU. It doesn't have any Support Packs installed. You have configured your LDAP server to allow clear-text passwords. However, when you try to install the product, an error is generated and the installation fails. What is the cause?

- A. You need at least 1 GB of RAM.
- B. You need to upgrade to a Pentium IV CPU.
- C. You need to install Support Pack 1 or later.
- D. The Middle Tier Server can't provide services through a firewall.
- E. You need to configure your LDAP server to not allow clear-text passwords.

Answer: C

QUESTION 59:

Which DesktopDNA.exe switch configures the DNA Engine to automatically execute a migration without displaying the Personality Migration Wizard screens?

- A. /T
- B. /M
- C. /X
- D. /Q
- E. /A
- F. /NA

Answer: D

QUESTION 60:

Where does Novell recommend that InstallShield AdminStudio packages be captured and created in your network?

- A. On your administrative workstation.
- B. On any NetWare 6.5 server in your tree.
- C. On a clean Windows 2000 or 2003 lab server.
- D. On the workstation of a typical user in your network.
- E. On the same system where AdminStudio is installed.
- F. On a clean workstation that has no applications installed.
- G. On any Windows 2000 or 2003 Domain server in your network
- H. On a clean NetWare 6.5 server installed in its own tree with no other applications installed.

Answer: F

QUESTION 61:

Which objects are used to compute effective policies for the Remote Control policy? (Choose 2.)

- A. The workstation object of the managed workstation.
- B. The workstation object of the management console workstation.
- C. The user object of the user logged in to the managed workstation.
- D. The user object of the user logged in to the management console workstation.
- E. Profile objects associated with the user object of the user logged in to the managed workstation.
- F. Template objects associated with the user object of the user logged in to the managed workstation.

Answer: A,C

QUESTION 62:

Which type of application object can be configured for a lights-out distribution?
(Choose 2.)

- A. AOT
- B. Web
- C. MSI
- D. AXT
- E. Simple

Answer: A,D

QUESTION 63:

Which remote management utility can you use to get realtime information about the device drivers on the controlled workstation?

- A. Chat
- B. Diagnostics
- C. File Transfer
- D. Remote View
- E. Remote Execute

Answer: B

QUESTION 64:

Which type of ZENworks application can be used to deliver registry keys, INI files, text files, or icons without actually installing an application on user workstations?

- A. MSI
- B. AOT
- C. AXT
- D. Web
- E. MST
- F. Simple

Answer: F

QUESTION 65:

When installing ZENworks 6.5 Desktop Management workstation agents, which information must be configured if the Novell Client is not being used to access policies and applications? (Choose 2.)

- A. The Workstation Manager agent
- B. The Remote Management agent
- C. The HTTP port number used by the middle tier server
- D. The DNS name or IP address of the back-end server
- E. The DNS name or IP address of the middle tier server

Answer: C,E

QUESTION 66:

What is the URL for the ZPMS Subscription Service? (Choose 2.)

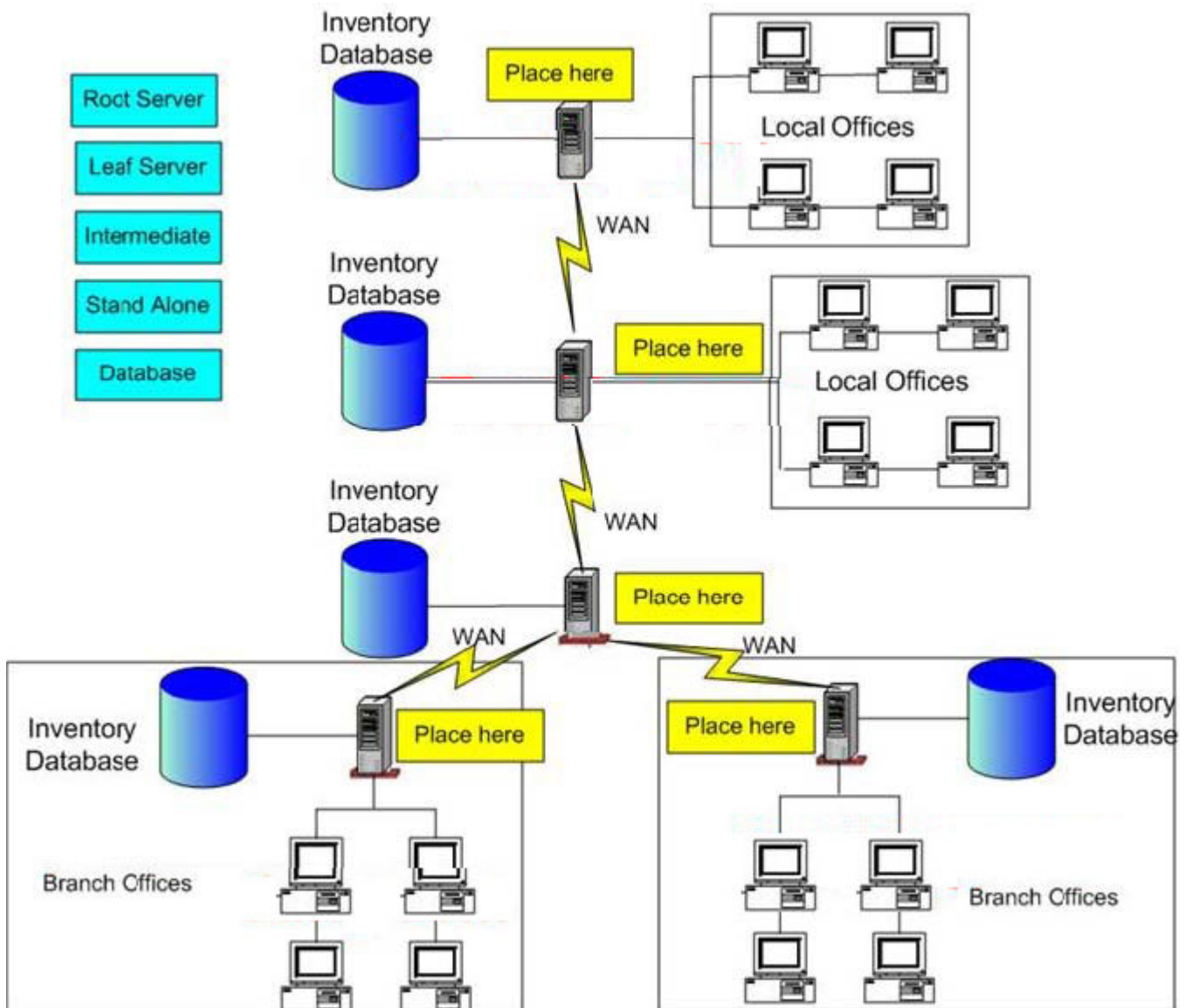
- A. <https://novell.patchlink.com:443>
- B. <https://patchlink.novell.com:443>
- C. <https://zenworks.patchlink.com:443>
- D. <https://storage12.patchlink.com:443>
- E. <https://patchlink.zenworks.novell.com:443>
- F. <https://storage.patchlink.zenworks.novell.com:443>

Answer: A,D

QUESTION 67:

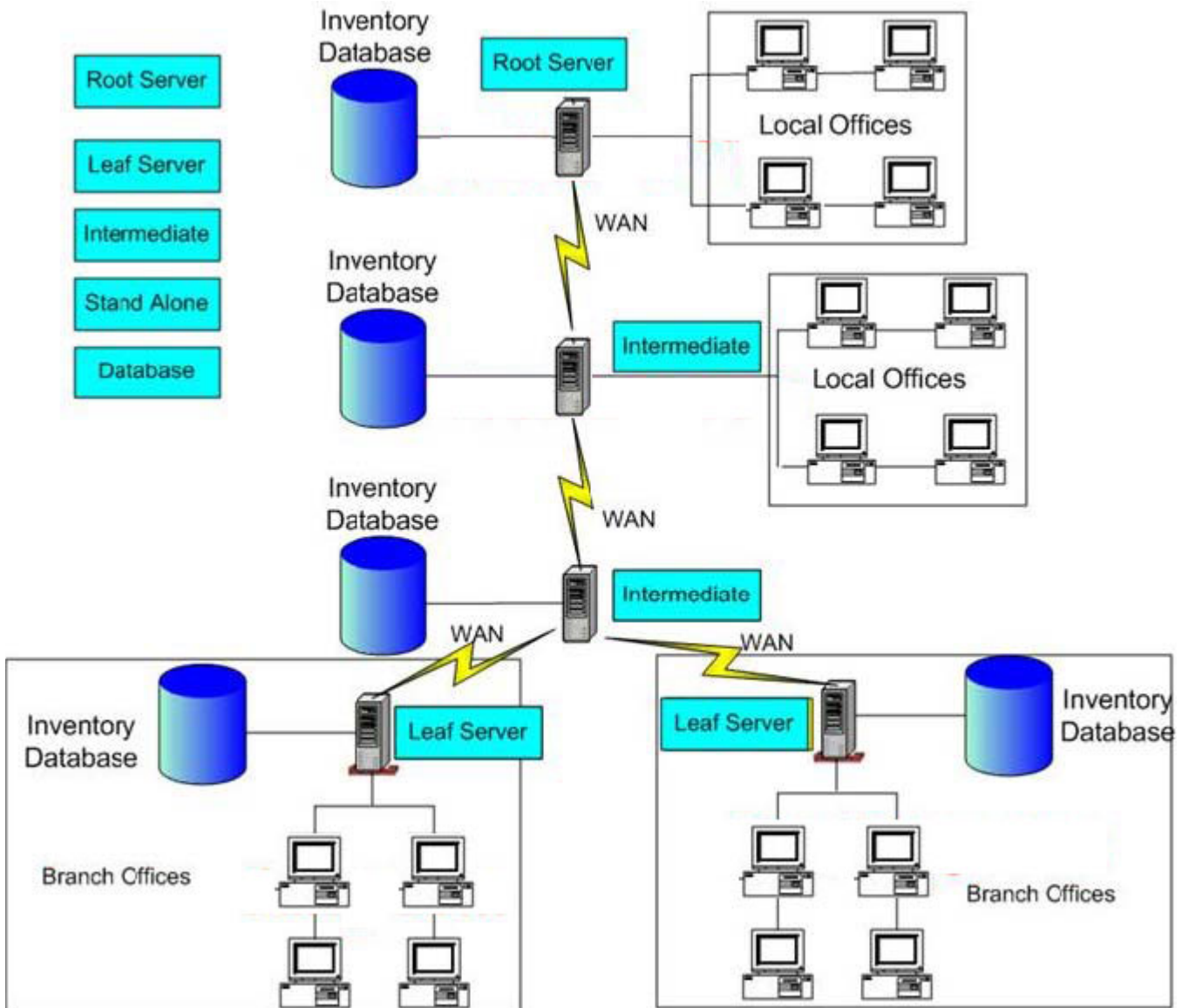
DRAG DROP

The graphic shows a ZENworks Desktop Management workstation inventory configuration. Drag and drop the correct labels to the corresponding workstation inventory components.



Answer:

Explanation:

**QUESTION 68:**

When configuring a Workstation package, policies are available under 6 categories: General, Windows 9x, Windows NT-2000-XP, Windows NT, Windows 2000, and Windows XP. Which policies can be configured under the General policies category? (Choose 3.)

- A. Novell iPrint
- B. Windows Group
- C. Remote Control
- D. Workstation Imaging
- E. Computer Extensible

F. Workstation Inventory

Answer: A,C,D

QUESTION 69:

Which ZENworks Preboot Services component delivers the IP address of the TFTP/MTFTP server to Preboot Services clients?

- A. Pmap.nlm
- B. DHCP Server
- C. PDHCP Server
- D. Imagesrvr.nlm
- E. DiNIC Transaction Server

Answer: C

QUESTION 70:

Exhibit:



This MSI distribution project has been misconfigured. What has been done incorrectly?

- A. You must not use mapped drive letters in the path fields.
- B. You must not use LDAP naming syntax in the Context field.
- C. The version field must not be left blank for new application objects.
- D. The Administration Package Path and the SOURCEPATH must not be the same.

Answer: A

QUESTION 71:

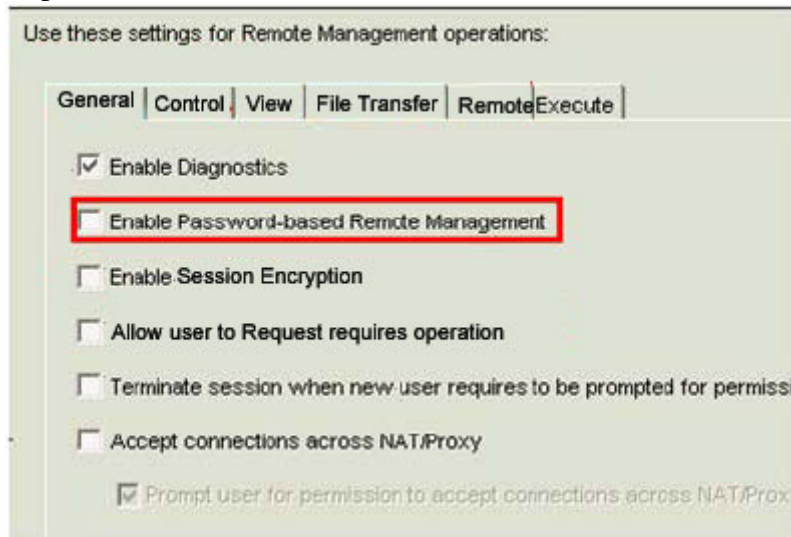
Exhibit:



Click the option you would select if you want to allow remote operators to be able to establish Remote Management sessions with workstations that have not been imported into the eDirectory tree.

Answer:

Explanation:



QUESTION 72:

DRAG DROP

The graphic shows ZENworks 6.5 Desktop Management workstation inventory server roles. Indicate whether each server role can scan workstations.

Option for Inventory Databases

Can scan workstations	CANNOT scan workstations
-----------------------	--------------------------

Workstation Inventory Server Roles

Place here	Leaf server
Place here	Intermediate server
Place here	Root server
Place here	Standalone server

Answer:

Explanation:

Option for Inventory Databases

Can scan workstations	CANNOT scan workstations
-----------------------	--------------------------

Workstation Inventory Server Roles

Can scan workstations	Leaf server
Can scan workstations	Intermediate server
Can scan workstations	Root server
Can scan workstations	Standalone server

QUESTION 73:

Which policy package is used to configure the Workstation Inventory Roll-Up

policy?

- A. User policy package
- B. Server policy package
- C. Container policy package
- D. Workstation policy package
- E. Service Location policy package

Answer: B

QUESTION 74:

If the information a user prints is confidential and needs to be printed to her office no matter where she logs in, what type of iPrint policy should be used?

- A. User
- B. Secure
- C. Container
- D. Workstation
- E. Service Location

Answer: A

QUESTION 75:

You want to initiate a Remote Management session with a managed workstation whose Remote Management Agent has been configured to use TCP port 1968. Which file must you edit on the management console workstation to do this?

- A. IPports.ini
- B. Zports.cfg
- C. Rmports.ini
- D. Zenports.ini
- E. Mcports.cfg
- F. Rmtcpports.ini

Answer: C

QUESTION 76:

The ZPMS Update Agent can be deployed on which operating system? (Choose 3.)

- A. Solaris
- B. Windows ME
- C. Windows 2000 Server
- D. Red Hat Linux (with 2.0 kernel)
- E. Windows 95 OSR2 (with IE 4.01)

Answer: B,C,E

QUESTION 77:

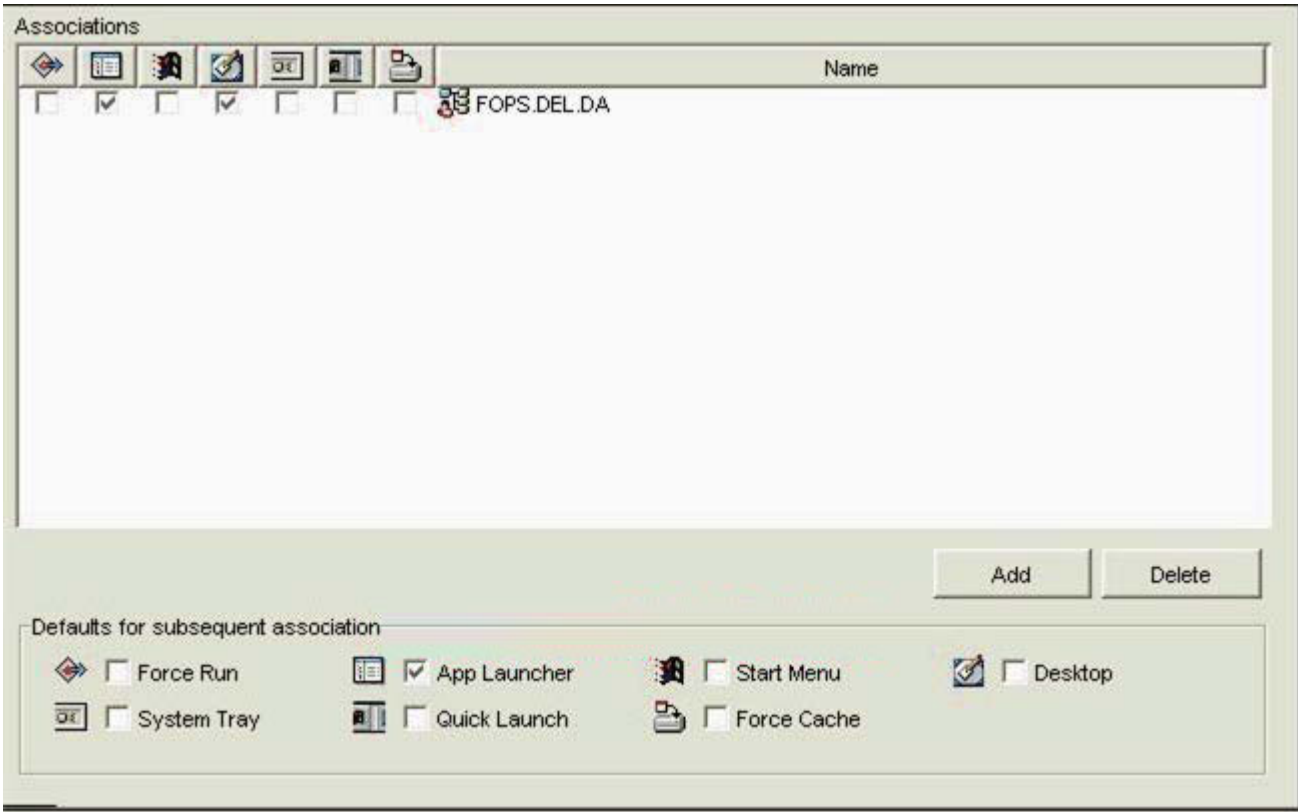
Which tool is used to assign the necessary rights for a user to remotely control a workstation?

- A. Help desk wizard
- B. Remote control wizard
- C. Remote operator wizard
- D. Remote management wizard

Answer: C

QUESTION 78:

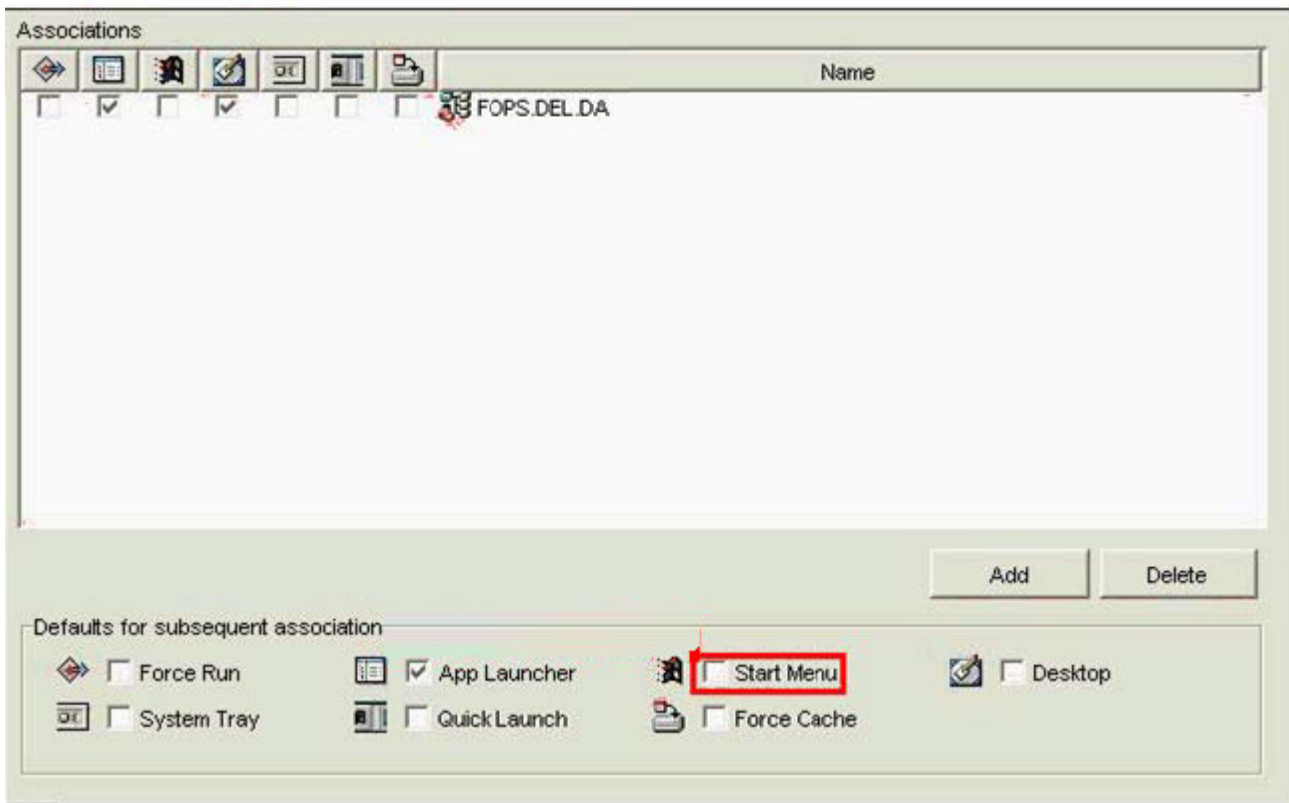
Exhibit:



You are configuring an application object for a spreadsheet application, which is part of a suite of office productivity applications. You want all application objects in the suite to appear in the Start Menu. Click the option you would use to specify that Start Menu be automatically marked the next time you create an application object.

Answer:

Explanation:



QUESTION 79:

The ZENworks 6.5 Desktop Management web services architecture eliminates the need for which component?

- A. Firewall
- B. Novell Client
- C. ZENworks middle tier
- D. ZENworks back-end server

Answer: B

QUESTION 80:

Which configurations can be easily set using policies in the user package? (Choose 2.)

- A. A standard workstation wallpaper for all users

- B. A restricted workstation environment for users
- C. The deploying of applications across various LAN locations
- D. The tracking of various types of hardware used in your organization

Answer: A,B

QUESTION 81:

Which port does the ZENworks Middle Tier Server use to communicate with the Management Agent on workstations outside the firewall? (Choose 2.)

- A. 80
- B. 81
- C. 443
- D. 444
- E. 389
- F. 636
- G. 8008
- H. 8009

Answer: A,C

QUESTION 82:

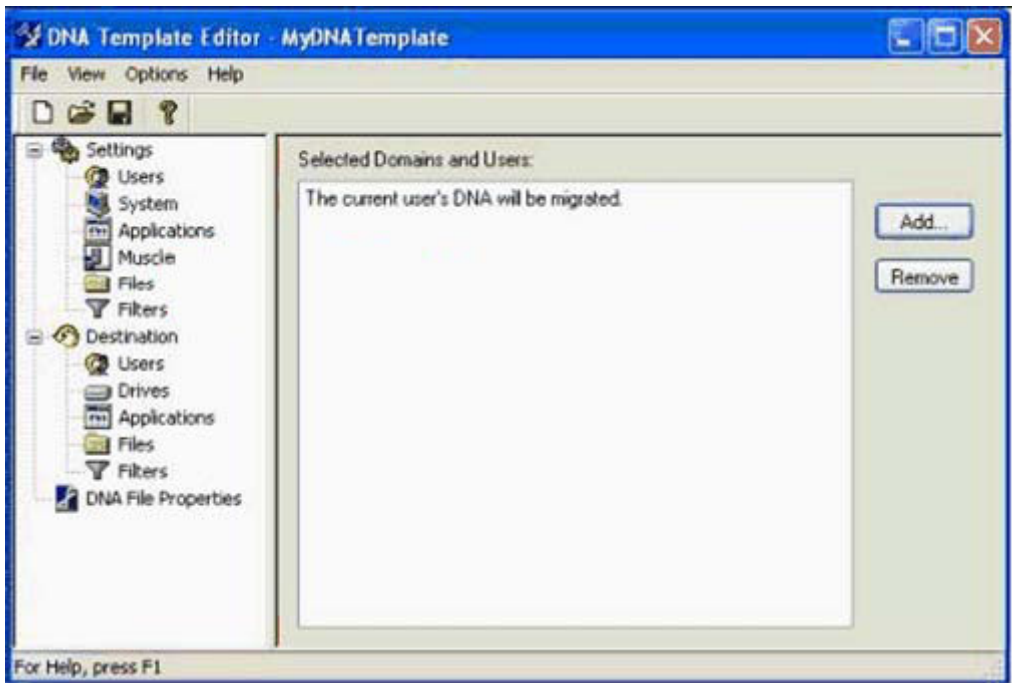
Which NAL application delivery method allows ZENworks applications to be accessed through icons in the System Tray?

- A. Application Window
- B. Application Loader
- C. Application Browser
- D. Application Explorer
- E. ZENworks Middle-Tier server

Answer: D

QUESTION 83:

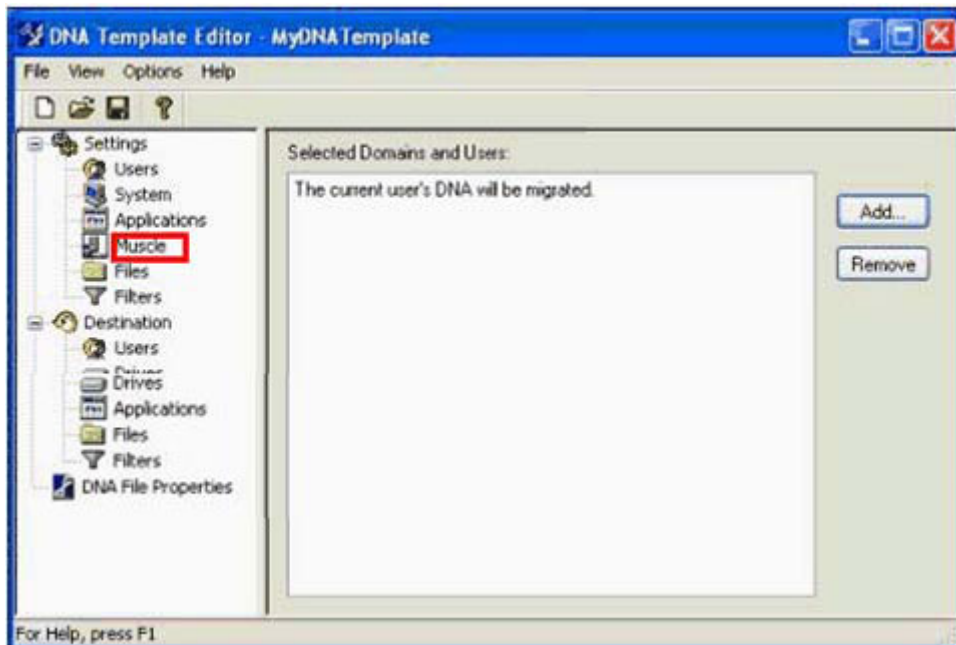
Exhibit:



Click the option you would select to migrate applications for which there are no scripts available.

Answer:

Explanation:



QUESTION 84:

When configuring Windows Group policies, which workstation policy state uses the policy setting that it previously had?

- A. Ignore
- B. Accept
- C. Default
- D. Enabled
- E. Disabled

Answer: A

QUESTION 85:

In addition to using the Hosts file or a DNS A record, you can also use registry data to enable workstations to locate the Import server in your network. Which registry key does this?

- A. HKEY_CURRENT_USER\Software\Novell\ZENworks\zwsreg
- B. HKEY_LOCAL_MACHINE\Software\Novell\ZENworks\zwsreg
- C. HKEY_CURRENT_USER\Software\Novell\ZENworks\zenwsreg
- D. HKEY_CURRENT_CONFIG\Software\Novell\ZENworks\zwsreg
- E. HKEY_LOCAL_MACHINE\Software\Novell\ZENworks\zenwsreg
- F. HKEY_CURRENT_CONFIG\Software\Novell\ZENworks\zenwsreg

Answer: E

QUESTION 86:

The ZENworks 6.5 Desktop Management web services architecture is comprised of the Back-end server and which other components? (Choose 2.)

- A. Middle tier
- B. Novell Client
- C. Workstation agents
- D. VPN (Virtual Private Network)

Answer: A,C

QUESTION 87:

Which object can you associate with a workstation package? (Choose 2.)

- A. User
- B. Alias
- C. Printer
- D. Profile
- E. Security
- F. Computer
- G. Container
- H. Workstation Group

Answer: G,H

QUESTION 88:

Which eDirectory design guidelines for NetWare should you follow when implementing ZENworks Desktop Management? (Choose 2.)

- A. Tier design guidelines
- B. Tree design guidelines
- C. Policy design guidelines
- D. Server design guidelines
- E. Replica design guidelines

Answer: B,E

QUESTION 89:

Which utility must you install on your management console workstation to generate Inventory reports?

- A. ODBC client
- B. MicrosoftSQL
- C. ODBC Reporting agent
- D. ZENworks Reporting agent
- E. Desktop Management agent

Answer: A

QUESTION 90:

Exhibit:

```
<!--param name=\"singleTree\" value=\"DA-TREE\"-->
<!--param name=\"Portalview\" value=\"false\"-->
<!--param name=\"BannerURL\" value=\"http://da1.da.com/banner.html\"-->
<!--param name=\"BannerHeight\" value=\"80\"-->
<!--param name=\"ShowTree\" value=\"true\"-->
<!--param name=\"ShowTasks\" value=\"false\"-->
<!--param name=\"AppDisplayType\" value=\"0\"-->
<!--param name=\"ShowAppFrameNavigation\" value=\"true\"-->
<!--param name=\"ShowIEToolbarButton\" value=\"true\"-->
```

Click on the parameter in the Myapps.html file you would edit if you want to remove the banner section of the Application Browser view.

Answer:

Explanation:

```
<!--param name=\"singleTree\" value=\"DA-TREE\"-->
<!--param name=\"Portalview\" value=\"false\"-->
<!--param name=\"BannerURL\" value=\"http://da1.da.com/banner.html\"-->
<!--param name=\"BannerHeight\" value=\"80\"-->
<!--param name=\"ShowTree\" value=\"true\"-->
<!--param name=\"ShowTasks\" value=\"false\"-->
<!--param name=\"AppDisplayType\" value=\"0\"-->
<!--param name=\"ShowAppFrameNavigation\" value=\"true\"-->
<!--param name=\"ShowIEToolbarButton\" value=\"true\"-->
```

QUESTION 91:

Which ZENworks Patch Management Services component analyzes the network profile to identify the patches, hot fixes, and updates required and transfers the necessary files to the Update Server?

- A. Web Console
- B. Update Agent
- C. Subscription Service
- D. iManager ZMPS plug-in
- E. ZMPS ConsoleOne plug-in
- F. Desktop Management Agent

Answer: C

QUESTION 92:

Which ZENworks Preboot Services component delivers the IP address of the TFTP/MTFTP server to Preboot Services clients?

- A. Pmap.nlm
- B. DHCP Server
- C. PDHCP Server
- D. Imagesrvr.nlm
- E. DiNIC Transaction Server

Answer: C

QUESTION 93:

Before a user can access applications through application objects, the user must have the minimum of which rights?

- A. Create, Read, and Compare rights to the root of the tree
- B. Trustee of the application objects and the Read right to the files
- C. Supervisor rights to the container where the applications were created
- D. Create, Read, and Compare rights to the container where the applications were created
- E. Trustee of the container where the application objects are and the Read right to the files

Answer: B

QUESTION 94:

Exhibit:

ZENworks Desktop Management Agent Policy | Policy Schedule | NDS Rights ▼ | Other | Ri

Settings

Please Note: All settings apply to associated workstations, not just modified settings

Global Settings

☐ Apply Middle Tier Address

DNS name or IP address of the ZENworks Middle Tier Server

Workstation Manager Specific Settings

eDirectory Refresh Rate (Minutes) 1380

Login Settings

☐ Display ZENworks authentication dialog (Note: Client32 login displayed if installed)

☐ Allow users to change ZENworks Middle Tier server address on authentication dialog

Resident workstation welcome bitmap (NT/2000/XP only)

Welcome caption (NT/2000/XP only)

Login window bitmap (NT/2000/XP only)

Dynamic Local User Policy Settings (NT/2000/XP only)

☐ Enable Volatile User cache

Cache Volatile User time period (Days) 5

You need to configure your ZENworks Desktop Management Agent policy such that volatile user information that has been previously cached on a workstation to remain on the workstation for a specified period. Click the option in the policy configuration page that will do this.

Answer:

Explanation:

ZENworks Desktop Management Agent Policy | Policy Schedule | NDS Rights | Other | Ri

Settings

Please Note: All settings apply to associated workstations, not just modified settings

Global Settings

☐ Apply Middle Tier Address

DNS name or IP address of the ZENworks Middle Tier Server

Workstation Manager Specific Settings

eDirectory Refresh Rate (Minutes) 1380

Login Settings

☐ Display ZENworks authentication dialog (Note: Client32 login displayed if installed)

☐ Allow users to change ZENworks Middle Tier server address on authentication dialog

Resident workstation welcome bitmap (NT/2000/XP only)

Welcome caption (NT/2000/XP only)

Login window bitmap (NT/2000/XP only)

Dynamic Local User Policy Settings (NT/2000/XP only)

☒ Enable Volatile User cache

Cache Volatile User time period (Days) 5

QUESTION 95:

You're implementing the Novell iPrint policy in a user package for users in your eDirectory tree. Your iPrint service is running on a NetWare 6.5 server that has Support Pack 2 applied. You need to configure the iPrint policy to automatically install the iPrint client on users' workstations. In which directory is the iPrint client installation file located on your server?

- A. Sys:\Apache2\
- B. Sys:\Etc\iPrint
- C. Sys:\Etc\Ippclient
- D. Sys:\iPrint\Client\Nipp-s
- E. Sys:\Apache2\Htdocs\Iprint
- F. Sys:\Apache2\Htdocs\Ippdocs
- G. Sys:\Apache2\Htdocs\Ippclient

Answer: F

QUESTION 96:

Which statements are true about NAL application fault tolerance? (Choose 3.)

- A. It is configured to handle server failure.
- B. It is configured to optimize server utilization.
- C. You do not need to create and define application objects.
- D. Duplicate application object files must be stored on a different server.
- E. You need to create and define application objects before you can implement it.
- F. Duplicate application objects must be stored on the same server as the application objects.

Answer: A,D,E

QUESTION 97:

You've just installed ZPMS on your Windows 2000 Server system. Your server's DNS name is zpms.da.com. Which URL should you use to access the Update Server's web console administration utility?

- A. <http://zpms.da.com>
- B. <http://zpms.da.com/WebConsole.html>
- C. <https://zpms.da.com/WebConsole.html>
- D. <https://zpms.da.com/novell/portal/zpmsAdmin.html>
- E. <https://zpms.da.com/novell/zenworks/zpmsAdmin.shtml>

Answer: A

QUESTION 98:

Which server package policy is used to configure an Inventory server to receive software definition updates from other Inventory servers?

- A. RollUp policy
- B. Software Update policy
- C. Inventory Update policy
- D. Dictionary Update policy
- E. ZENworks Database policy

Answer: D

QUESTION 99:

Which Personality Migration component is used to customize and automate the migration process?

- A. DNA files
- B. Log files
- C. DNA engine
- D. Options file
- E. Template files
- F. Application scripts

Answer: E

QUESTION 100:

In preparation for migrating workstation personalities using ZENworks, you've created a Personality Store on your NetWare 6.5 server's VOL1 volume. Personalities will be stored in VOL1:\Ddna\Data. Your users reside within several different containers within the O=DA container, so you've granted O=DA Read, Create, Write, and File Scan rights to VOL1:\Ddna\Data. You've created an application object to collect workstation personalities when users login to the tree. However, when your users do this, the DNA engine won't run on user's workstations. Your users use Windows 2000 Professional systems with Internet Explorer 5.5 installed. What's causing the problem?

- A. The Personality Store must reside on the server's SYS volume.
- B. The Personality Store must reside at the root of a server volume.
- C. Personality Migration isn't compatible with Windows 2000 systems.
- D. Personality Migration doesn't support trees where users reside in dispersed contexts.
- E. Workstations need to have either Internet Explorer 6 or Microsoft XML Parser 3 installed.
- F. Users need the Erase right to the Personality Store in addition to the rights already granted.

Answer: E

QUESTION 101:

You are about to implement application load balancing. Which statements are true?
(Choose 3.)

- A. It can be configured to handle server failover.
- B. It can be configured to optimize server utilization.
- C. You need to create and define at least one application object.
- D. Your duplicate application object files must be stored on a different server.
- E. Your duplicate application objects must be stored on the same server as the application objects.

Answer: B,C,D

QUESTION 102:

Exhibit:



Click the application object property page tab that you would use to configure an application site list for this application.

Answer:

Explanation:



QUESTION 103:

Which type of policy package must be used for imaging operations on workstations that haven't been imported into the eDirectory tree?

- A. User policy package
- B. Server policy package

- C. Container policy package
- D. Workstation policy package
- E. Service Location policy package

Answer: B

QUESTION 104:

Which ZENworks Preboot Services component is queried by the Preboot Services client to see if there is imaging work that needs to be completed on the workstation?

- A. DHCP Server
- B. TFTP Server
- C. PDHCP Server
- D. MTFTP Server
- E. DiNIC Transaction Server

Answer: E

QUESTION 105:

Exhibit:



Click the component of InstallShield AdminStudio you would use to create a ZENworks application object from an existing MSI package.

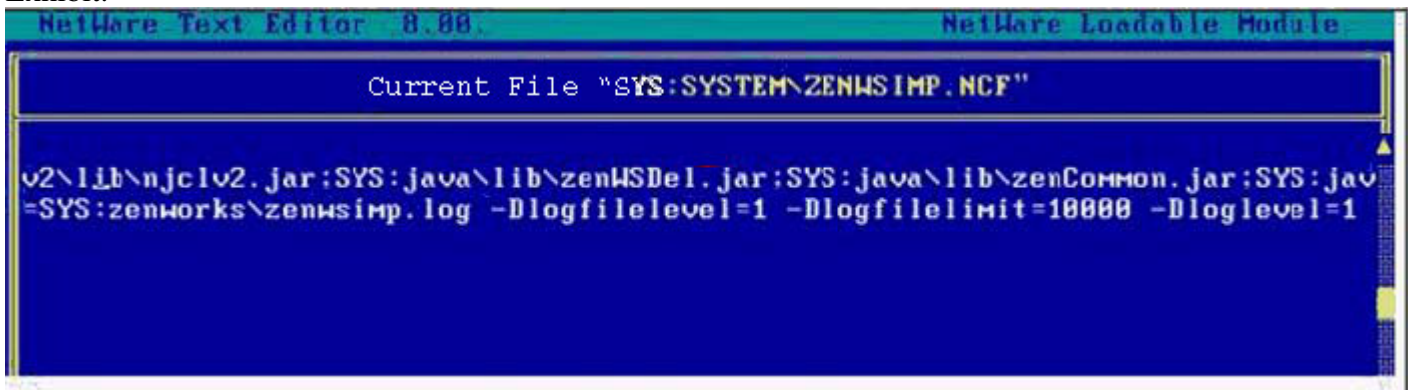
Answer:

Explanation:



QUESTION 106:

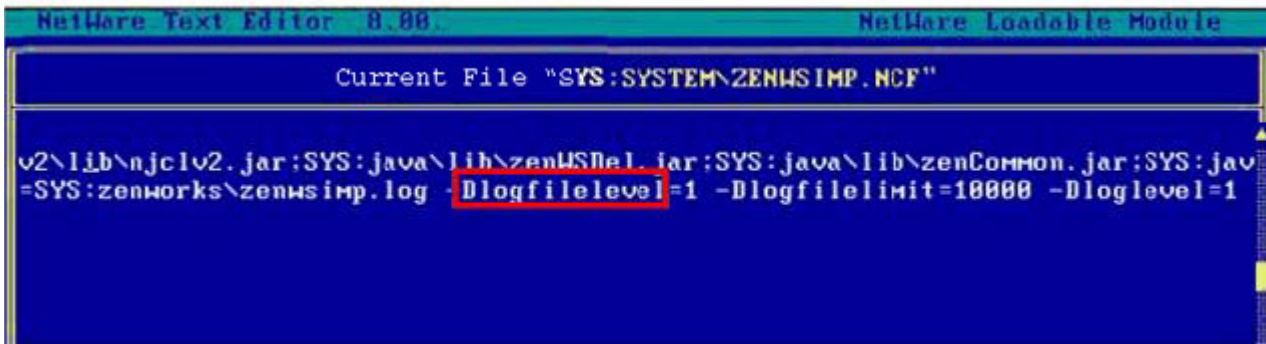
Exhibit:



You want to enable logging for your Automatic Workstation Import service so you can monitor import activities in a logger screen on your Import server's console. Click on the parameter in the Workstation Import configuration file you must modify to enable this functionality.

Answer:

Explanation:



QUESTION 107:

Which file can you edit on the managed workstation to configure the TCP port used by the Remote Management Agent?

- A. Rm.cfg
- B. Zrm.ini
- C. Rmcfg.ini
- D. ZenRm.cfg
- E. Remote.ini
- F. RemMan.cfg

Answer: C

QUESTION 108:

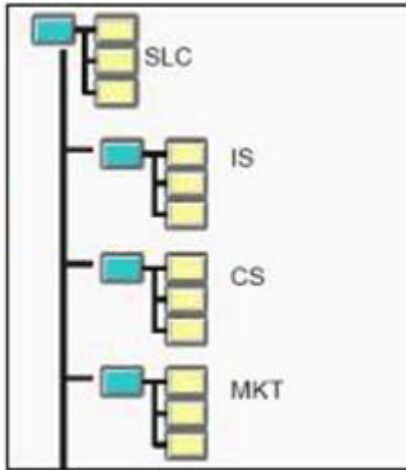
Which file is the ZENworks Preboot Services client?

- A. Pxe.exe
- B. Pmap.sys
- C. Dinic.sys
- D. Rsync.exe
- E. Pxe-c.sys
- F. Zimage.exe
- G. Rimage.exe

Answer: C

QUESTION 109:

Exhibit:



You're configuring Search Policies for your eDirectory tree. You don't want policies in the tree to be applied to users in your Information Systems container (IS.SLC). To do this, you've implemented a container policy package on the IS.SLC container and set the Search Level to 1. However, you've discovered that when you authenticate as JJackson.IS.SLC from a Windows XP workstation, desktop preferences contained in a user policy package associated with the SLC container are being applied to your workstation.

Why is this happening?

- A. The search level needs to be set to 0.
- B. The search level needs to be set to 3.
- C. Search policies aren't applied to Windows XP systems.
- D. The container policy package needs to be associated with SLC container.
- E. Multi-container effective policies can't be eliminated with a search policy.

Answer: A

QUESTION 110:

Where are policy packages stored?

- A. In a MySQL database
- B. In a Sybase database
- C. In the eDirectory tree
- D. Within the LDAP server

- E. On the local Domain server
- F. In Sys:\Zenworks\Policy.dat
- G. In Sys:\Zenworks\Policy.mdb
- H. In Sys:\Zenworks\Policies.db3

Answer: C

QUESTION 111:

If you're using the Hosts file or DNS to provide host name resolution for your ZENworks Automatic Workstation Import service, what host name must you configure to resolve to your Import server's IP address?

- A. ZWSREG
- B. ZIMPORT
- C. ZENWSREG
- D. ZWSIMPORT
- E. ZENWSIMPORT
- F. You use your Import server's host name, such as DA1 or NTI-PROVO.

Answer: E

QUESTION 112:

Which server package policy is used to specify the database that the Inventory server uses to store workstation inventory and application data?

- A. RollUp policy
- B. Inventory Server policy
- C. Dictionary Update policy
- D. ZENworks Database policy
- E. Workstation Database policy

Answer: D

QUESTION 113:

Which objects can you use to set security parameters for remote management?

(Choose 2.)

- A. User
- B. Alias
- C. Group
- D. Profile
- E. Template
- F. Workstation
- G. Server package

Answer: A,F

QUESTION 114:

To configure user-defined policies using the ADM files for workstation objects, which policy do you configure?

- A. iPrint
- B. Remote control
- C. Computer extensible
- D. Workstation imaging
- E. ZENworks Desktop Management agent

Answer: C

QUESTION 115:

Which type of ZENworks Personality Migration saves the personality in a file which can be then transferred to a different computer?

- A. Imaged migration
- B. Hosted migration
- C. Stored migration
- D. Delayed migration
- E. Deferred migration
- F. Real-time migration
- G. Suspended migration

Answer: E

QUESTION 116:

Which DesktopDNA.exe switch configures the DNA Engine to capture a workstation's personality? (Choose 2.)

- A. /D
- B. /C
- C. /A
- D. /P
- E. /U
- F. /DNA
- G. /APPLY
- H. /UPLOAD
- I. /CAPTURE

Answer: A,F

QUESTION 117:

Which objects in ConsoleOne can you use to initiate a remote control session? (Choose 2.)

- A. User
- B. Root
- C. Container
- D. Help desk
- E. Workstation
- F. User package
- G. Workstation package

Answer: A,E

QUESTION 118:

Which policies are included in the Service Location policy package? (Choose 2.)

- A. iPrint

- B. XML Targets
- C. Workstation Group
- D. ZENworks Database
- E. Workstation Imaging
- F. Computer Extensible
- G. ZENworks Desktop Management Agent

Answer: B,D

QUESTION 119:

Exhibit:

Add rules to control availability of this application.

Type	Subject	Operator	Value
Disk size	Windows Directory Drive	>=	1
AND Disk size	C:	>=	5
AND OS version	Windows 2000/XP	>=	5.0.x

Disk size(Windows Directory Drive) >= 1
AND Disk size(C:) >= 5
AND OS version(Windows 2000/XP) >= 5.0.x

☐ Always show icon

Legacy File Add Modify Delete

Click the option in the Distribution Rules page of this application object that will allow you to manage it in a mixed environment consisting of ZENworks 6.5 and pre-ZENworks 6.5 versions of NAL.

Answer:

Explanation:

Add rules to control availability of this application.

Type	Subject	Operator	Value
Disk size	Windows Directory Drive	>=	1
AND Disk size	C:	>=	5
AND OS version	Windows 2000/XP	>=	5.0.x

Disk size(Windows Directory Drive) >= 1
 AND Disk size(C:) >= 5
 AND OS version(Windows 2000/XP) >= 5.0.x

☐ Always show icon

Legacy File Add Modify Delete

QUESTION 120:

Which ZENworks 6.5 Desktop Management workstation agent distributes, installs, and uninstalls applications?

- A. Workstation Imaging
- B. Workstation Manager
- C. Workstation Inventory
- D. Remote Management
- E. Novell application launcher (NAL)

Answer: E

QUESTION 121:

Which steps must you complete to configure a Standalone Workstation Inventory server? (Choose 2.)

- A. Configure the Roll-Up policy.
- B. Configure the Inventory Service object.
- C. Configure the Dictionary Update policy.
- D. Configure the Database Location policy.
- E. Configure the Workstation Inventory policy.

Answer: D,E

QUESTION 122:

What does Novell recommend for the system being used to capture and create an MSI package from a legacy installation routine? (Choose 2.)

- A. InstallShield AdminStudio should be installed on the same system.
- B. The latest operating system Service Packs should be installed on the system.
- C. Applications typically used in your organization should be installed on the system.
- D. The operating system typically implemented in your organization should be installed.
- E. All applications typically used by users should be running as the package is being captured and repackaged.

Answer: B,D

QUESTION 123:

Which remote management utility can you use to get realtime information about the device drivers on the controlled workstation?

- A. Chat
- B. Diagnostics
- C. File Transfer
- D. Remote View
- E. Remote Execute

Answer: B

QUESTION 124:

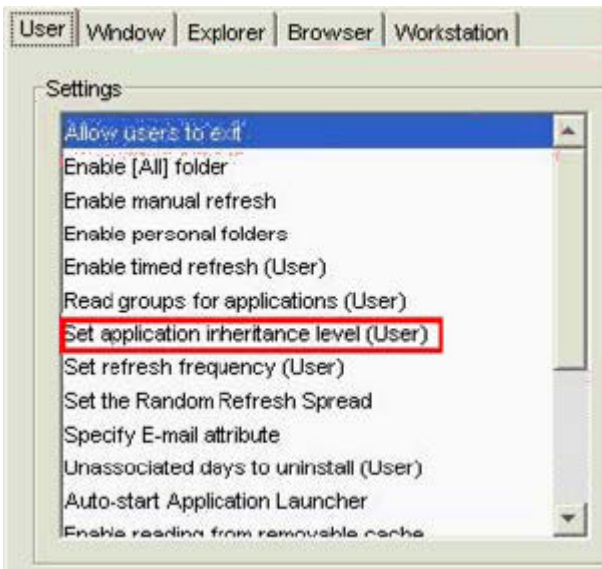
Exhibit:



Click on the Launcher Configuration option you would use if you want to limit the number of parent containers NAL will search when determining applications associated with the given user.

Answer:

Explanation:



QUESTION 125:

Which workstation inventory components are needed for a single-site inventory cycle? (Choose 2.)

- A. Storer
- B. Purger
- C. Sender
- D. Selector
- E. Dispatcher

Answer: A,D

QUESTION 126:

Which is a prerequisite for implementing auto-imaging operations using ZENworks Imaging?

- A. Workstations must be registered in the tree.
- B. You must configure a Service Location policy for your server.
- C. The Imaging service must be configured to use Multicast TFTP (MTFTP).
- D. The NetWare DHCP service must be running on the same server as the Imaging service.
- E. Your DHCP server must be configured to deliver option 61, which contains your Imaging server's IP address.

Answer: A

QUESTION 127:

Which user policy package should you configure to restrict user desktop settings on Windows XP and 2000 workstations?

- A. User extensible policy
- B. Windows group policy
- C. Scheduled action policy
- D. Dynamic local user policy
- E. Windows desktop preferences policy

Answer: B

QUESTION 128:

DRAG DROP

Match each ZENworks back-end service with the correct description.

Back-End Services

Automatic Workstation Import

Workstation Management

Remote Management

Workstation Imaging

Workstation Inventory

Descriptions

Place here

Gathers hardware and software information for all managed workstations on the network

Place here

Allows you to configure a workstation based on policies or a user login

Place here

Provides management of a workstation's lifecycle from object creation to removal

Place here

Allows you to take a file-by-file copy of the workstation OS, applications, and data files to be saved and restored to another workstation

Place here

Allows you to manage any workstation using the administrator workstation

Answer:

Explanation:

Descriptions

Workstation Inventory

Gathers hardware and software information for all managed workstations on the network

Workstation Management

Allows you to configure a workstation based on policies or a user login

Automatic Workstation Import

Provides management of a workstation's lifecycle from object creation to removal

Workstation Imaging

Allows you to take a file-by-file copy of the workstation OS, applications, and data files to be saved and restored to another workstation

Remote Management

Allows you to manage any workstation using the administrator workstation

QUESTION 129:

Which ZENworks 6.5 Desktop Management policies are cumulative policies?
(Choose 2.)

- A. Windows Group policies
- B. Service Location policies
- C. Scheduled Action policies
- D. Dynamic Local User policies
- E. Windows Desktop Preferences policies

Answer: A,C

QUESTION 130:

Which type of application object can be distributed using a lights-out distribution when the user is not logged in?

- A. User-associated
- B. Group-associated
- C. Server-associated
- D. Profile-associated
- E. Template-associated
- F. Workstation-associated

Answer: F

QUESTION 131:

What is the default administrative user account ZPMS creates on the Windows server when it is installed?

- A. Admin
- B. ZAdmin
- C. PatchLink
- D. ZMPSAdmin
- E. PatchLinkAdmin
- F. ZENAdministrator
- G. ZMPSAdministrator
- H. PatchLinkAdministrator

Answer: C

QUESTION 132:

Which utility do you use to access the Remote Operator Wizard?

- A. StartX
- B. iMonitor
- C. iManager
- D. ConsoleOne
- E. Desktop Management Agent
- F. Remote Management Web Console

Answer: D

QUESTION 133:

Which statements are true regarding ZENworks policies? (Choose 2.)

- A. Policies are stored on the workstations.
- B. Policies are grouped according to functional area.
- C. Policies allow you to assign file system rights to users.
- D. ZENworks policies can be stored in Sys:\Login and applied to multiple workstations upon login.
- E. ZENworks allows the same type of policy to perform various actions according to a specified schedule.

Answer: B,E

QUESTION 134:

Which is NOT a component of an Windows Installer (MSI) package?

- A. Transforms
- B. Application data
- C. Package summary

- D. Installation history
- E. Installation instructions

Answer: D

QUESTION 135:

Exhibit:



Your user object is BBell.SLC. Which server package. takes precedence when ZENworks determines effective policies?

- A. SRVPKGIS
- B. SRVPKGSLC
- C. SRVPKG_MKT
- D. SRVPKG_CUST

Answer: B

QUESTION 136:

Which object class can be associated with a user policy package? (Choose 4.)

- A. User
- B. Group
- C. Alias
- D. Server
- E. Profile
- F. Template
- G. Workstation
- H. Organization

- I. Workstation Group
- J. Organizational Unit
- K. ZENworks Database

Answer: A,B,H,J

QUESTION 137:

When repackaging a legacy installer, which repackaging method captures settings before the application is installed and then again after the installation is installed.

- A. Snapshot
- B. Pre-Post Processing
- C. Repackage Monitoring
- D. Installation Monitoring
- E. Post-Install Processing

Answer: A

QUESTION 138:

Which object classes can be associated with an application object? (Choose 4.)

- A. User
- B. Alias
- C. Group
- D. Profile
- E. Server
- F. Country
- G. Template
- H. Workstation

Answer: A,C,F,H

QUESTION 139:

Which policy package can be used to configure the ZENworks Database policy? (Choose 2.)

- A. User policy package
- B. Server policy package
- C. Container policy package
- D. Workstation policy package
- E. Service Location policy package

Answer: B,E

QUESTION 140:

You are creating an inventory deployment plan for a WAN environment using Workstation Inventory. At the most, how many workstations should be serviced by a single Inventory server?

- A. 25
- B. 50
- C. 100
- D. 500
- E. 5000

Answer: E

QUESTION 141:

Which ZENworks Application Management feature allows users to install, run, and repair applications when they are not authenticated to the eDirectory tree?

- A. Application caching
- B. Lights-out distribution
- C. Application load balancing
- D. Location-independent access
- E. Application fault-tolerance
- F. Push-pull application distribution

Answer: A

QUESTION 142:

What is required in order to record NAL application distribution events to a single log file? (Choose 2.)

- A. Establish a local directory.
- B. Create a server directory.
- C. Give the application users Read-Only rights.
- D. Give the application users Read and Write rights.
- E. Enable an XML URL policy in a service location package.

Answer: B,D

QUESTION 143:

A distributed application can appear as an icon on the user's desktop. What is this icon directly referencing?

- A. An AOT file
- B. A transform file (MST file)
- C. A UNC path to an executable
- D. A literal path to an executable
- E. An application object in eDirectory

Answer: E

QUESTION 144:

You want to configure your Middle Tier Server so that their ZENworks Desktop Management session closes when the user closes her browser window. What value should you populate the Persistent Cookies field in NSAdmin with to do this?

- A. 0
- B. 1
- C. 3
- D. ON
- E. OFF
- F. Enabled
- G. Disabled

Answer: A

QUESTION 145:

You're trying to install the ZENworks Middle Tier Server on your NetWare 6.5 server. Your server has 768 MB of RAM and 80 GB of free hard disk space. It also has Support Pack 1.1a installed. This same server already has ZENworks 6.5 Desktop Management installed on it. You are running the installation program from Windows 2000 Professional workstation with Novell Client 4.9 installed. The installation generates an error and fails to complete. What is the cause?

- A. The server must have at least 1 GB of RAM.
- B. The server must have Support Pack 2 or later installed.
- C. You must upgrade the Novell Client on the workstation to 4.9 SP1a or later.
- D. You can't use a Windows 2000 Professional workstation to install the Middle Tier Server.
- E. You can't install the Middle Tier Server on the same server where Desktop Management is installed

Answer: C

QUESTION 146:

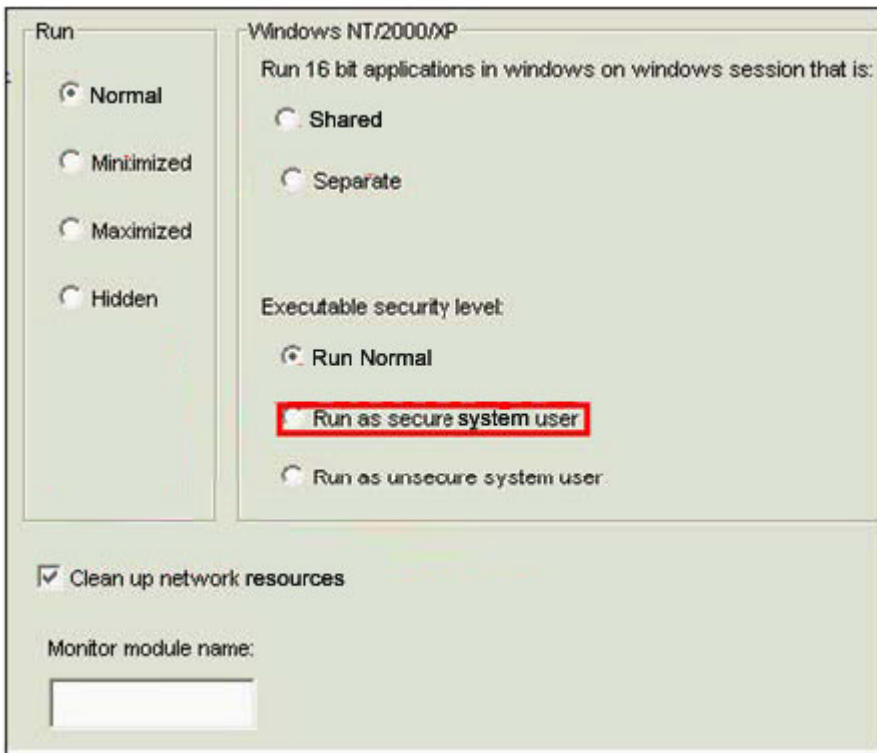
Exhibit:

The image shows a configuration window for Windows NT/2000/XP. It has two main sections. The left section, titled 'Run', contains four radio button options: 'Normal' (selected), 'Minimized', 'Maximized', and 'Hidden'. The right section, titled 'Windows NT/2000/XP', contains two sub-sections. The first, 'Run 16 bit applications in windows on windows session that is:', has two radio button options: 'Shared' (selected) and 'Separate'. The second, 'Executable security level:', has three radio button options: 'Run Normal' (selected), 'Run as secure system user', and 'Run as unsecure system user'. At the bottom of the window, there is a checked checkbox labeled 'Clean up network resources' and a text field labeled 'Monitor module name:' with an empty input box below it.

You are configuring an application object for distributing an application patch to user workstations. The patch will require full access to the workstation operating system. You don't want to rely on users to interact with the patch installation to complete the installation process. Click on the Environment page option that will configure the application object to function in this manner.

Answer:

Explanation:



QUESTION 147:

Which DHCP option must be configured if ZENworks 6.5 Preboot Services and Dhcpserver.nlm are running on the same server?

- A. 53
- B. 60
- C. 100
- D. 997
- E. 001

Answer: B

QUESTION 148:

In relation to ZENworks 6.5 Desktop Management and remote management, packet technology is used to remotely wake up a turned off network workstation.

- A. IPX

- B. UPS
- C. Magic
- D. TCP/IP
- E. Live fire

Answer: C

QUESTION 149:

After a workstation has been imported into your eDirectory tree, its object must be regularly updated through the workstation registration process. Which events cause the ZENworks workstation registration program to register the workstation in the tree? (Choose 3.)

- A. When the workstation is booted.
- B. When the workstation is powered off.
- C. When a Windows Service Pack is installed.
- D. When Workstation Manager starts on the workstation.
- E. When a user logs out from the eDirectory tree from the workstation.
- F. When a user authenticates to the eDirectory tree from the workstation.

Answer: D,E,F

QUESTION 150:

Which TCP port is used by the Remote Management Agent?

- A. 389
- B. 443
- C. 1761
- D. 2020
- E. 8008
- F. 8010

Answer: C

QUESTION 151:

You've configured your DHCP server to deliver an option containing the IP address of your Middle Tier server. Which Registry key is created on workstations that receive the option?

- A. HKEY_Local_Machine\Software\Novell\ZENworks\Xtier
- B. HKEY_Local_Machine\Software\Novell\ZENworks\ZENworks
- C. HKEY_Local_Machine\Software\Novell\ZENworks\MiddleTier
- D. HKEY_Local_Machine\Software\Novell\ZENworks\XtierAddress
- E. HKEY_Local_Machine\Software\Novell\ZENworks\ZENworksAddress
- F. HKEY_Local_Machine\Software\Novell\ZENworks\MiddleTierAddress

Answer: F

QUESTION 152:

Which is true regarding Workstation Inventory software dictionary updates?

- A. Leaf servers can only receive dictionary updates from Root servers.
- B. Leaf servers can only receive dictionary updates from Intermediate servers.
- C. Root servers can only receive dictionary updates from Intermediate servers.
- D. Intermediate servers can only receive dictionary updates from Root servers.
- E. Any Inventory server can receive dictionary updates from any other Inventory server.

Answer: E

QUESTION 153:

You had an application object in your tree named OpenOfficeApp.IS.SLC.D

A. One

of your assistants accidentally deleted the application object from the tree. Rather than try to restore the object from a backup, you decide to simply recreate the object. When you do, you allow ZENworks to generate a new GUID for the object. What will happen when users and workstations associated with the application object attempt to launch it?

- A. The complete application will be redistributed to all users or workstations.
- B. There will be no effect from the users' standpoint from the process of recreating the object. The application will launch normally.
- C. NAL will display a warning to users indicating that this is a new application object for a previously distributed application; then the application will launch normally.
- D. NAL will fail to launch the application on any workstation where the previous version of the application was distributed. Only new workstations

will be able to launch the application.

Answer: A

QUESTION 154:

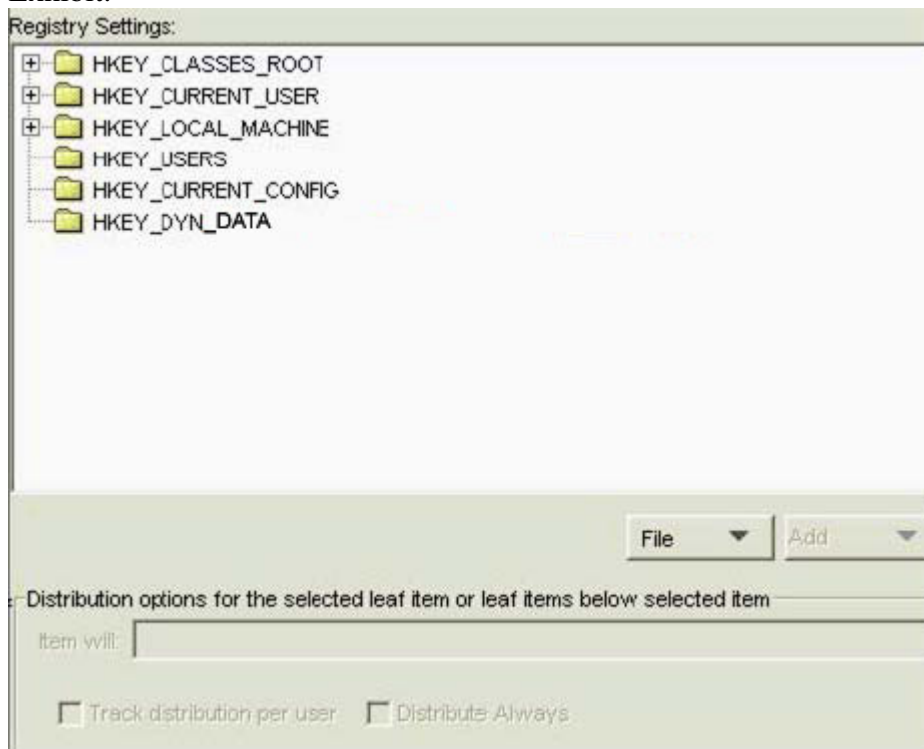
You've just installed the ZENworks Middle Tier Server on your NetWare 6.5 server. In which directory can you find the installation log file?

- A. Sys:\Etc\Xteir
- B. C:\Novell\Xteir
- C. C:\Novell\Zfdtemp
- D. C:\Windows\Temp
- E. Sys:\Public\Xteirlog
- F. Sys:\Public\Zenworks\MTLog

Answer: C

QUESTION 155:

Exhibit:



Click the option you would use to configure the application object to remove the Registry data defined in the object from workstations it is distributed to.

Answer:

QUESTION 156:

Which configurations can be easily set using policies in the user package? (Choose 2.)

- A. Deploying applications across various LAN locations
- B. Tracking various types of hardware used in your organization
- C. Providing a full-access workstation environment for administrators
- D. Maintaining a workstation environment for users with special needs

Answer: C,D

QUESTION 157:

Which elements are included in the ZENworks 6.5 Desktop Management Workstation Inventory Software Dictionary? (Choose 2.)

- A. Rules
- B. Versions
- C. Identifiers
- D. Definitions
- E. Patch Levels

Answer: A,C

QUESTION 158:

If you modify the myapps.html file on the Middle Tier Server, users who access the file from the server have the modified version of the myapps.html file downloaded to which directory on their Windows workstations?

- A. C:\Program Files\Novell\Zenworks
- B. C:\Program Files\Novell\Zenworks\Nal
- C. C:\Program Files\Novell\Zenworks\Cache\Nal

- D. C:\Program Files\Novell\Zenworks\Appbrowser
- E. C:\Program Files\Novell\Zenworks\Nls\your_language
- F. C:\Program Files\Novell\Zenworks\Nal\your_language

Answer: E

QUESTION 159:

Which property page of a NAL application object can you use to configure a lights-out distribution of the application to user workstations?

- A. Options
- B. Registry
- C. Identification
- D. Icons/Shortcuts
- E. Application Files
- F. Distribution Scripts
- G. Pre-Install Schedule
- H. Pre-Distribution Process Termination

Answer: G

QUESTION 160:

You've just used the Distribution Wizard in AdminStudio to create an application object in your tree. You've placed the object in IS.SLC.D

A. You've associated the object with the MKT.SLC.DA container in your tree. However, when users in the MKT container launch Application Explorer, the icon for the new application isn't displayed. Why did this happen?

- A. The object must be moved to the MKT.SLC.DA container.
- B. Users in MKT.SLC.DA must be granted rights to the application object.
- C. Application objects must include at least one distribution rule. The Distribution Wizard doesn't add any.
- D. Application objects created with the Distribution Wizard should only be associated with user or workstation objects.
- E. Application objects created with the Distribution Wizard can't be accessed through Application Explorer. You must use Application Browser.

Answer: C

QUESTION 161:

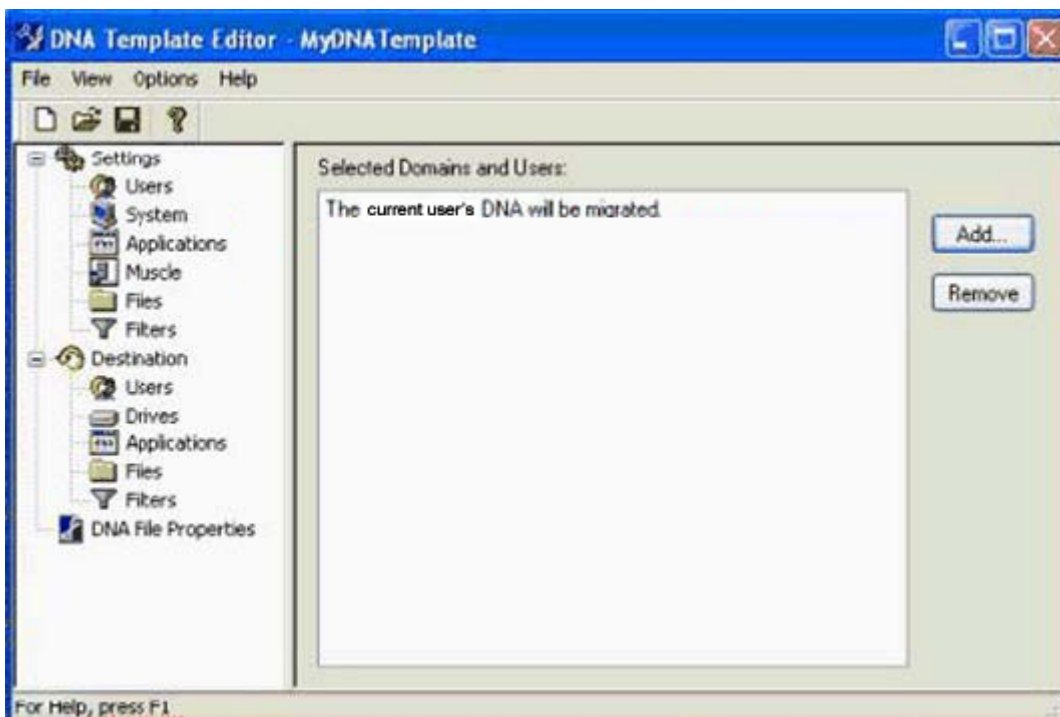
When configuring a Remote Control session from your management console, which button in the viewer window toolbar will send the Alt+Tab key sequence to the managed workstation?

- A. Toggle
- B. System Keys
- C. Alt Key Pass
- D. Full Screen Polling
- E. System Key Pass Through

Answer: A

QUESTION 162:

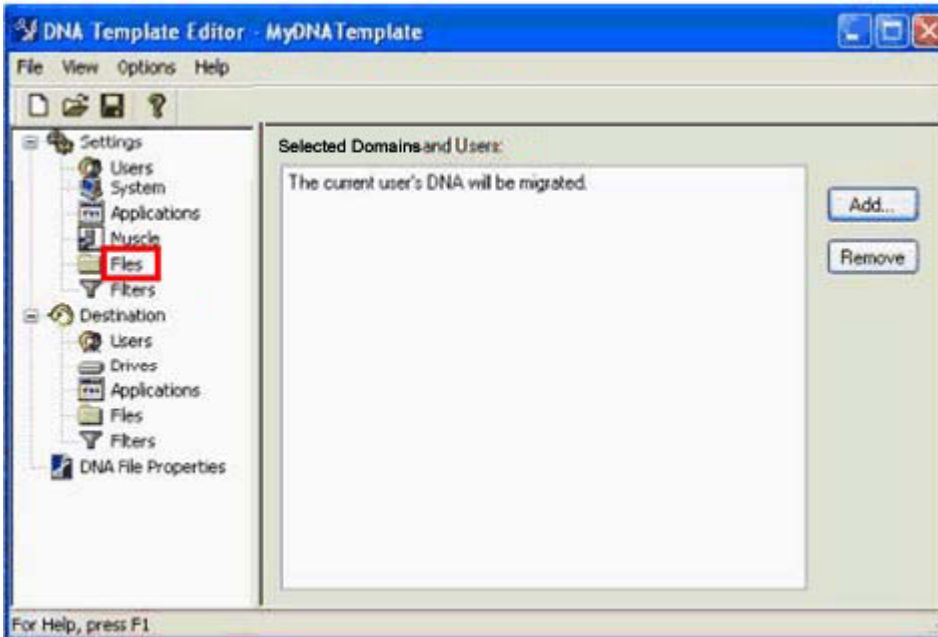
Exhibit:



Click the option you would select to migrate users' My Documents folder.

Answer:

Explanation:



QUESTION 163:

Which file system rights should users have to the Personality Migration Template Store directory on your NetWare server? (Choose 2.)

- A. Read
- B. Erase
- C. Write
- D. Create
- E. Modify
- F. File Scan
- G. Access Control

Answer: A,F

QUESTION 164:

In preparation for migrating workstation personalities using ZENworks, you've created a Personality Store on your NetWare 6.5 server's VOL1 volume. Personalities will be stored in VOL1:\Ddna\Data. Your users reside within several different containers within the O=DA container, so you've granted O=DA Read,

Write, and File Scan rights to VOL1:\Ddna\Data. You've created an application object to collect workstation personalities when users login to the tree. However, when your users do this, the DNA Engine generates an error and the workstation personalities aren't saved in the Personality store. Your users use a mixture of Windows XP Professional and Windows 2000 Professional systems. What's causing the problem?

- A. The Personality Store must reside on the server's SYS volume.
- B. The Personality Store must reside at the root of a server volume.
- C. Personality Migration isn't compatible with Windows 2000 systems.
- D. Personality Migration isn't compatible with mixed Windows operating systems.
- E. Personality Migration doesn't support trees where users reside in dispersed contexts.
- F. Users need the Create right to the Personality Store in addition to the rights already granted.

Answer: F

QUESTION 165:

Which policy package can be used to configure the Database Location policy?
(Choose 2.)

- A. User policy package
- B. Server policy package
- C. Container policy package
- D. Workstation policy package
- E. Service Location policy package

Answer: B,E

QUESTION 166:

Which ZENworks Patch Management Services component is used to manage your ZPMS system?

- A. Web Console
- B. Update Agent
- C. Update Server
- D. Subscription Service
- E. iManager ZMPS plug-in

F. ZMPS ConsoleOne plug-in

Answer: A

QUESTION 167:

When configuring a Remote Management session from the management console, which configuration option allows you pass Alt+keystroke sequences to the managed workstation?

- A. System key pass
- B. Alt key passthrough
- C. Enable accelerator keys
- D. Enable Ctrl & Alt key pass

Answer: A

QUESTION 168:

What steps should you take before rolling out updates identified as necessary by ZPMS to workstations in your network?

- A. Backup critical workstation data.
- B. Test each update in a lab environment.
- C. Re-image your workstations with a base image.
- D. Uninstall existing Service Packs and patches from workstations.
- E. Use ZPMS to install the latest patches and updates on the Windows server hosting your Update Server.

Answer: A,B

QUESTION 169:

Exhibit:



Click on the Launcher Configuration tab you would use if you wanted to configure an icon to be displayed for Application Explorer in your workstations' system tray.

Answer:

Explanation:



QUESTION 170:

Which server package policy is used to specify the database that the Inventory server uses to store workstation inventory and application data?

- A. RollUp policy
- B. Inventory Server policy
- C. Dictionary Update policy
- D. ZENworks Database policy
- E. Workstation Database policy

Answer: D

QUESTION 171:

You need to install InstallShield AdminStudio on your Windows 2000 Professional workstation. You've authenticated locally to the workstation as GSanders, which user account is a member of the Users group. Your workstation has a 1.13 GHz Pentium III CPU and 384 MB of RAM. It also has Internet Explorer 5.5 installed. When you try to install AdminStudio, an error is generated and the product fails to install. Why did this happen?

- A. InstallShield requires a Pentium IV CPU.
- B. InstallShield requires at least 512 MB RAM.
- C. You must upgrade to Internet Explorer 6 or later.
- D. You must authenticate as Administrator or as user in the Administrators group.
- E. InstallShield isn't compatible with Windows 2000. You must upgrade to Windows XP.

Answer: D

QUESTION 172:

You need to allow users the ability to uninstall a Novell application launcher (NAL) delivered application by right-clicking the application icon and selecting uninstall. What must be done to make this feature available? (Choose 2.)

- A. An administrator must enable uninstall using a remote control agent.
- B. The user must have administrator rights to be able to uninstall the application.
- C. An administrator must enable uninstall in the properties of the application object.
- D. An administrator must enable users to perform a manual uninstall in the properties of the application object.

Answer: C,D

QUESTION 173:

Your DHCP service is running on the same server as your ZENworks Preboot service. Because of this, you need to configure your DHCP server to deliver option 60. Which value should you enter as the Vendor Class Identifier?

- A. PXE
- B. PXEClient
- C. PXEServer
- D. Your Preboot server's IP address
- E. PXEServer=your server's IP address
- F. TFTPServer=your server's IP address
- G. PDHCPServer=your server's IP address

Answer: B

QUESTION 174:

After installing ZPMS on your Windows server, the Update Agent installation files are copied to the server. You can then use these files to install the Update Agent on workstations in your network. In what directory are these files located?

- A. C:\Program Files\Patchlink\
- B. C:\Winnt\Patchlink\Update Agent
- C. C:\Program Files\Patchlink\Agents

- D. C:\Winnt\Temp\ZPMS\Update Agent
- E. C:\Program Files\Patchlink\Update Agent
- F. C:\Documents and Settings\Administrator\My Documents\Patchlink

Answer: B

QUESTION 175:

By default, which policy package has highest precedence?

- A. A policy package associated with a group object
- B. A policy package associated with the root object
- C. A policy package associated with an organization (O) object
- D. A policy package associated with an organizational unit (OU) object

Answer: A

QUESTION 176:

Which policy package is used to configure the Workstation Inventory policy?

- A. User policy package
- B. Server policy package
- C. Container policy package
- D. Workstation policy package
- E. Service Location policy package

Answer: D

QUESTION 177:

Which ZENworks Patch Management Services component is used to gather patch inventory information for workstations and provide it to the Update Server?

- A. Web Console
- B. Update Agent
- C. Subscription Service
- D. iManager ZMPS plug-in

- E. ZMPS ConsoleOne plug-in
- F. Desktop Management Agent

Answer: B

QUESTION 178:

You are deploying the ZPMS Update Server on your Windows 2000 Server system. This server has Service Pack 4 deployed. It also has Microsoft SQL Server installed and functions as a database server for your organizations' web-based help desk application. It runs on a Pentium IV 2.5 GHz system with 512 MB of RAM. It has 40 GB of free disk space. However, when you try to implement the Update Server, the ZPMS application fails and generates an error. What is the cause of this problem?

- A. ZPMS requires at least 1 GB of RAM.
- B. ZPMS won't run on Windows 2000 Server.
- C. ZPMS isn't compatible with the Pentium IV CPU.
- D. ZPMS isn't compatible with Windows 2000 Service Pack 4.
- E. You shouldn't try to install ZPMS on a server where Microsoft SQL Server is installed.

Answer: E

QUESTION 179:

Which policies are included in a Workstation Policy package? (Choose 2.)

- A. Search policy
- B. Windows Group policy
- C. ZENworks Database policy
- D. Workstation Import policy
- E. Workstation Imaging policy

Answer: B,E

QUESTION 180:

Which file is the ZENworks Preboot Services client?

- A. Pxe.exe
- B. Pmap.sys
- C. Dinic.sys
- D. Rsync.exe
- E. Pxe-c.sys
- F. Zimage.exe
- G. Rimage.exe

Answer: C

QUESTION 181:

Which policy in the user policy package is used to create a user account on a Windows NT, 2000, or XP workstation when a user authenticates to eDirectory?

- A. Local User policy
- B. Windows Group policy
- C. User Extensible policy
- D. Dynamic Local User policy
- E. Windows Local User policy
- F. Workstation Preferences policy

Answer: D

QUESTION 182:

Where is the remote management agent password set?

- A. Remote operator wizard in ConsoleOne
- B. Application icon on the managed workstation
- C. Remote management agent icon on the host workstation
- D. Remote management agent icon on the managed workstation

Answer: D

QUESTION 183:

When using a Windows Group policy in a user policy package to import an Active Directory group policy containing security settings, which file are the imported settings saved in by ZENworks?

- A. Zensec.inf
- B. Security.inf
- C. WGPsec.txt
- D. Zenpolicy.inf
- E. ZenADsec.inf
- F. Zensettings.txt

Answer: A

QUESTION 184:

You have a critical application that is being deployed to workstations and you want to receive notification if any workstation fails to install the application. You also want a list of workstations that the application is delivered to. Which service location package policies should you configure to receive this information? (Choose 2.)

- A. XSLT policy
- B. SMTP host policy
- C. SNMP trap targets policy
- D. ZENworks database policy

Answer: C,D

QUESTION 185:

Exhibit:

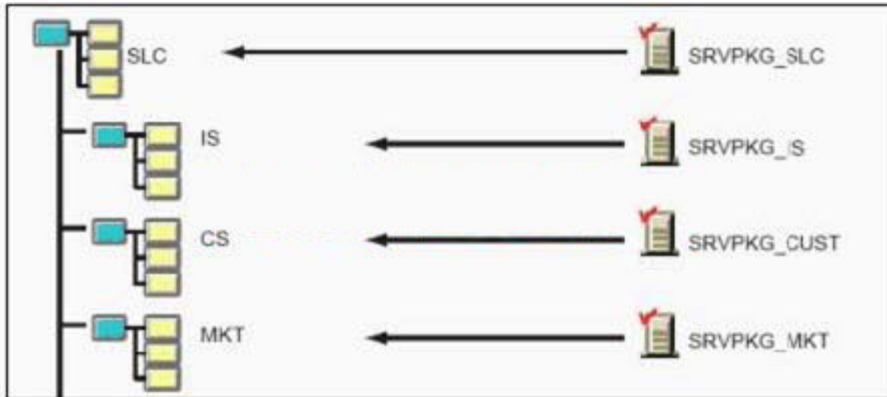


Exhibit:

Your user object is MHuffman.MKT.SLC. Which server package takes precedence when ZENworks determines effective policies?

- A. SRVPKG_IS
- B. SRVPKG_SLC
- C. SRVPKG_MKT
- D. SRVPKG_CUST

Answer: C

QUESTION 186:

If you modify the myapps.html file on the Middle Tier Server, users who access the file from the server have the modified .version of the myapps.html file downloaded to which directory on their Windows workstations?

- A. C:\Program Files\Novell\Zenworks
- B. C:\Program Files\Novell\Zenworks\Nal
- C. C:\Program Files\Novell\Zenworks\Cache\Nal
- D. C:\Program Files\Novell\Zenworks\Appbrowser
- E. C:\Program Files\Novell\Zenworks\Nls\yourlanguage
- F. C:\Program Files\Novell\Zenworks\Nal\yourlanguage

Answer: E

QUESTION 187:

You want to initiate a Remote Management session with a managed workstation whose Remote Management Agent has been configured to use TCP port 1968. Which file must you edit on the management console workstation to do this?

- A. IPports.ini
- B. Zports.cfg
- C. Rmports.ini
- D. Zenports.ini
- E. Mcports.cfg
- F. Rmtcpports.ini

Answer: C

QUESTION 188:

Which property page of a NAL application object can you use to configure a lights-out distribution of the application to user workstations?

- A. Options
- B. Registry
- C. Identification
- D. Icons/Shortcuts
- E. Application Files
- F. Distribution Scripts
- G. Pre-Install Schedule
- H. Pre-Distribution Process Termination

Answer: G

QUESTION 189:

Which ZENworks 6.5 Desktop Management Imaging Services component is used by PXE-enabled workstations to request files required for imaging tasks?

- A. Ziswin
- B. TFTP Server
- C. DHCP Server
- D. Proxy DHCP Server
- E. DiNIC Transaction Server

Answer: B

QUESTION 190:

When using a registry key to enable workstations to locate your Import server, which value should you enter for the ImportServer parameter in the registry key?

- A. The name of your eDirectory tree.
- B. The IP address of your Import server.
- C. The IP address of your Domain server.
- D. The IP address and port number of the LDAP service on your Import server.
- E. The fully-distinguished name and context of your Import server in the tree.
- F. The typeful fully-distinguished name and context of your Import server in the tree.

Answer: B

QUESTION 191:

You are about to implement application load balancing. Which statements are true? (Choose 2.)

- A. It can be configured to handle server failover.
- B. It can be configured to optimize server utilization.
- C. You do not need to create and define application objects.
- D. Your duplicate application object files must be stored on a different server.
- E. Your duplicate application objects must be stored on the same server as the application objects.

Answer: B,D

QUESTION 192:

Which file can you edit on the managed workstation to configure the TCP port used by the Remote Management Agent?

- A. Rm.cfg
- B. Zrm.ini
- C. Rmcfg.ini
- D. ZenRm.cfg
- E. Remote.ini
- F. RemMan.cfg

Answer: C

QUESTION 193:

Which remote management utility can you use to get realtime information about the device drivers on the controlled workstation?

- A. Chat
- B. Diagnostics
- C. File Transfer
- D. Remote View
- E. Remote Execute

Answer: B

QUESTION 194:

Which object can you use to set security parameters for remote management?

- A. Alias
- B. Group
- C. Server
- D. Workstation

Answer: D

QUESTION 195:

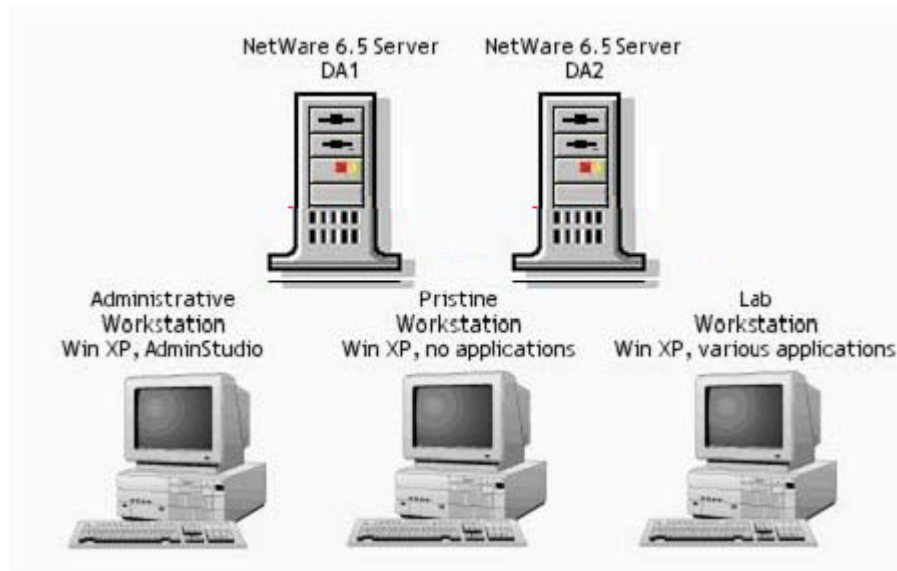
In relation to a Windows group policy, which feature allows you to change the policy preference to ensure that workstation policies take precedence over user policies?

- A. ZEN policy loopback
- B. User policy loopback
- C. Group policy loopback
- D. Workstation policy loopback

Answer: C

QUESTION 196:

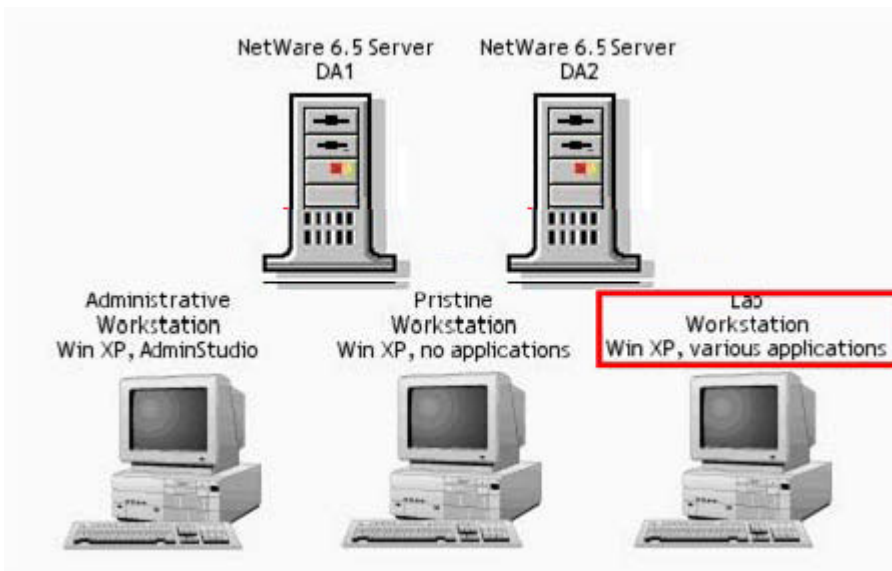
Exhibit:



You are preparing systems to deploy InstallShield AdminStudio to repackaging legacy application setups into MSI packages. Click on the system displayed where Novell recommends that the stand-alone version of the Repackager be installed.

Answer:

Explanation:



QUESTION 197:

Which protocol is used to send information from your ZENworks server to the Middle Tier Server as part of the process of returning requested data back to the Management Agent on the workstation? (Choose 2.)

- A. NCP
- B. SMB
- C. AFP
- D. NIS
- E. NFS
- F. LDAP
- G. CIFS
- H. SNMP
- I. XML/TCP
- J. XML/RDP

Answer: A,G

QUESTION 198:

User DGrow.MKT.SLC.DA is a member of the PowerUsers.SLC.DA group. You have associated a user policy package with the SLC.DA container that configures user desktops to use the Rainy Day color scheme. You've also associated a user policy package with the MKT.SLC.DA container that configures user desktops to use the Pumpkin color scheme. You've also associated a user policy package with

DGrow.MKT.SLC.DA that configures user desktops to use the Maple color scheme. Finally, you've associated a user policy package with PowerUsers.SLC.DA that configures user desktops to use the Spruce color scheme. When DGrow logs in, which color scheme will be applied to her workstation?

- A. Maple
- B. Spruce
- C. Pumpkin
- D. Rainy Day
- E. The user and the group associations are in conflict and, therefore, no color scheme will be applied.

Answer: A

QUESTION 199:

What is the name of the silent response file used as part of the ZPMS Update Agent installation when distributing the agent through an eDirectory login script?

- A. Silent.iss
- B. Setup.iss
- C. Zpmsua.txt
- D. UpdateAgent.txt
- E. UpdateAgent.cfg
- F. ZENUUpdateAgent.cfg

Answer: B

QUESTION 200:

What are the benefits of an efficient eDirectory design? (Choose 2.)

- A. It minimizes tree walking.
- B. It provides efficient user access through global groups.
- C. It allows ZENworks to access users in multiple domains.
- D. It allows ZENworks to quickly locate and access eDirectory objects.

Answer: A,D

QUESTION 201:

Which is a prerequisite for implementing auto-imaging operations using ZENworks Imaging?

- A. Workstations must be registered in the tree.
- B. You must configure a Service Location policy for your server.
- C. The Imaging service must be configured to use Multicast TFTP (MTFTP).
- D. The NetWare DHCP service must be running on the same server as the Imaging service.
- E. Your DHCP server must be configured to deliver option 61, which contains your Imaging server's IP address.

Answer: A

QUESTION 202:

You recently created an application object in your tree named WinZipApp.IS.SLC.D

- A. You have not yet associated the object with any other objects in the tree. You decide to manually change the GUID assigned to the object. What will be the effect of this change?
- A. There will be no effect from the users' standpoint from the process of changing the GUID. The application will launch normally.
 - B. When users launch the application, NAL will display a warning indicating that the object's GUID has changed; then the application will launch normally.
 - C. You will not be able to associate the object with any existing objects in the tree. You will only be able to associate it with new objects created after the GUID was changed.
 - D. NAL will fail to launch the application on any workstation where the previous version of the application was installed. Only clean workstations will be able to launch the application.

Answer: A

QUESTION 203:

Which type of ZENworks Personality Migration saves the personality in a file which can be then transferred to a different computer?

- A. Imaged migration
- B. Hosted migration
- C. Stored migration
- D. Delayed migration
- E. Deferred migration
- F. Real-time migration
- G. Suspended migration

Answer: E

QUESTION 204:

In relation to ZENworks 6.5 Desktop Management workstation imaging, which operating system is loaded from the boot image prior to performing the required imaging activity on the workstation?

- A. DOS
- B. UNIX
- C. Linux
- D. Windows

Answer: C

QUESTION 205:

Which object do you use to enable and configure a search policy?

- A. Group object
- B. Search object
- C. Container object
- D. Server policy package
- E. Container policy package
- F. Workstation policy package

Answer: E

QUESTION 206:

In relation to ZENworks 6.5 Desktop Management, distributing an application without an AXT, AOT, or MSI file is known as distributing a application.

- A. Single
- B. Simple
- C. Custom
- D. Complex

Answer: B

QUESTION 207:

Which tool is used to assign the necessary rights for a user to remotely control a workstation?

- A. Help desk wizard
- B. Remote control wizard
- C. Remote operator wizard
- D. Remote management wizard

Answer: C

QUESTION 208:

You've just completed installing the ZENworks Middle Tier Server on your NetWare 6.5 server. Your NetWare server's DNS name is da1.da.com. What URL can you use to verify that the service has been installed and is running correctly?

- A. <http://da1.da.com/>
- B. <https://da1.da.com:1716>
- C. <http://da1.da.com/oneNet/xteir-stats>
- D. <https://da1.da.com/oneNet/middletier.html>
- E. <http://da1.da.com/nps/portal/middletier.html>
- F. <https://da1.da.com/nps/portal/middletier.html>

Answer: C

QUESTION 209:

You are installing ZENworks workstation agents and need functionality for distributing and managing applications to associated users. Which feature should you select during installation to obtain this functionality?

- A. Workstation Imaging
- B. Workstation Manager
- C. Workstation Inventory
- D. Remote Management
- E. Application Management

Answer: E

QUESTION 210:

Before you can create and configure application objects, which minimum rights do you need?

- A. Supervisor rights to the root of the tree
- B. Create, Read, and Compare rights to the root of the tree
- C. Supervisor rights to the container where the applications will be created
- D. Create, Read, and Compare rights to the container where the applications will be created
- E. Trustee of the container where the application objects will be created and the Read right to the files

Answer: C

QUESTION 211:

Which type of ZENworks Personality Migration takes place over a TCP/IP connection and transfers a workstation's personality directly from the old system to the new system?

- A. Imaged migration
- B. Deferred migration
- C. Real-time migration
- D. Immediate migration

- E. Host-to-host migration
- F. Point-to-point migration

Answer: C

QUESTION 212:

Which TCP port is used by the Remote Control Listener?

- A. 390
- B. 443
- C. 1762
- D. 2021
- E. 8009
- F. 8011

Answer: C

QUESTION 213:

Which DesktopDNA.exe switch configures the DNA Engine to automatically execute a migration with the Personality Migration Wizard screens displayed but won't allow the user to interact with them?

- A. /T
- B. /M
- C. /X
- D. /Q
- E. /A
- F. /NA

Answer: B

QUESTION 214:

When configuring a Workstation package, policies are available under 6 categories: General, Windows 98, Windows NT-2000-XP, Windows NT, Windows 2000, and Windows XP. Which policies can be configured under the General policies category? (Choose 3.)

- A. Windows Group
- B. Remote Control
- C. Workstation Imaging
- D. Computer Extensible
- E. Workstation Inventory
- F. ZENworks Desktop Management Agent

Answer: B,C,F

QUESTION 215:

DRAG DROP

Place the processes for applying ZENworks 6.5 Desktop Management workstation policies in the order they occur.

Policy Processes

ZENworks finds a schedule for each workstation policy and applies all workstation policies as scheduled

ZENworks recognizes the workstation and finds the workstation object in the tree

Using the search policy's search rules, ZENworks finds all workstation policies to be applied

ZENworks locates a search policy that is part of the container package.

Policies in Order

Place process 1 here

Place process 2 here

Place process 3 here

Place process 4 here

Answer:

Explanation:

Policies in Order

ZENworks recognizes the workstation and finds the workstation **object in the tree**

ZENworks locates a search policy that is part of the container package.

Using the search policy's search rules, ZENworks finds all workstation policies to be applied

ZENworks finds a schedule for each workstation policy and applies all workstation policies as scheduled

QUESTION 216:

Which object can a service location policy package be associated with?

- A. User object
- B. Group object
- C. Server object
- D. Container object
- E. Workstation object
- F. Workstation Group object

Answer: D

QUESTION 217:

Which statements are true about ZENworks 6.5 Desktop Management site lists?
(Choose 2.)

- A. Users must authenticate locally to take advantage of them.
- B. They must be configured differently depending on which client is being used.
- C. Users can access applications locally even if they authenticate across the WAN.
- D. They can be implemented, regardless of whether users authenticate using the Novell Client or a ZENworks middle-tier server.

Answer: C,D

QUESTION 218:

Which of the following describes the ZENworks 6.5 Desktop Management application browser?

- A. A distributed application icon that is displayed in the system tray
- B. A web browser view that displays icons for distributed applications
- C. A standalone window that displays icons for distributed applications
- D. A distributed application icon that is displayed on the Windows desktop

Answer: B

QUESTION 219:

You want to configure your DHCP server to deliver an option containing the IP address of your Middle Tier server. Which option should you use?

- A. 23
- B. 89
- C. 100
- D. 001
- E. 106

Answer: C

QUESTION 220:

Exhibit:

Run before Distribution:
Run after Distribution:
Script Engine Location: <input type="text"/>
Enter or select the extension for the script file:
<input type="text"/>

What will happen if you configure an application object with a distribution script, but leave the Script Engine Location field blank on the Distribution Options > Distribution Scripts configuration page?

- A. NAL will not execute the script.
- B. NAL will execute the script as a DOS batch file.
- C. NAL will execute the script using the client workstation's Novell Client software.
- D. NAL will execute the script as Javascript using the workstation's browser software.
- E. NAL will execute the script on the server using the Novell Script for NetWare (NSN) engine.

Answer: C

QUESTION 221:

DRAG DROP
Exhibit:



You need to configure a Workstation Import policy to import workstations in your network into your eDirectory tree. Click on the eDirectory object you would use to configure this policy.

Answer:

Explanation:



QUESTION 222:

Enter the NetWare console command that starts the ZENworks 6.5 Desktop Management Workstation Inventory service.

Answer:

Answer: STARTINV.NCF

QUESTION 223:

Exhibit:



Click the component of InstallShield AdminStudio you would use to convert an application that uses a proprietary installation routine to an MSI package.

Answer:

Explanation:



QUESTION 224:

You have an application that is required to run on a terminal server. What must you do to ensure that users run the application from this server only?

- A. Configure local access.
- B. Configure fault tolerance.
- C. Configure load balancing.
- D. Configure alternate remote access.

Answer: D

QUESTION 225:

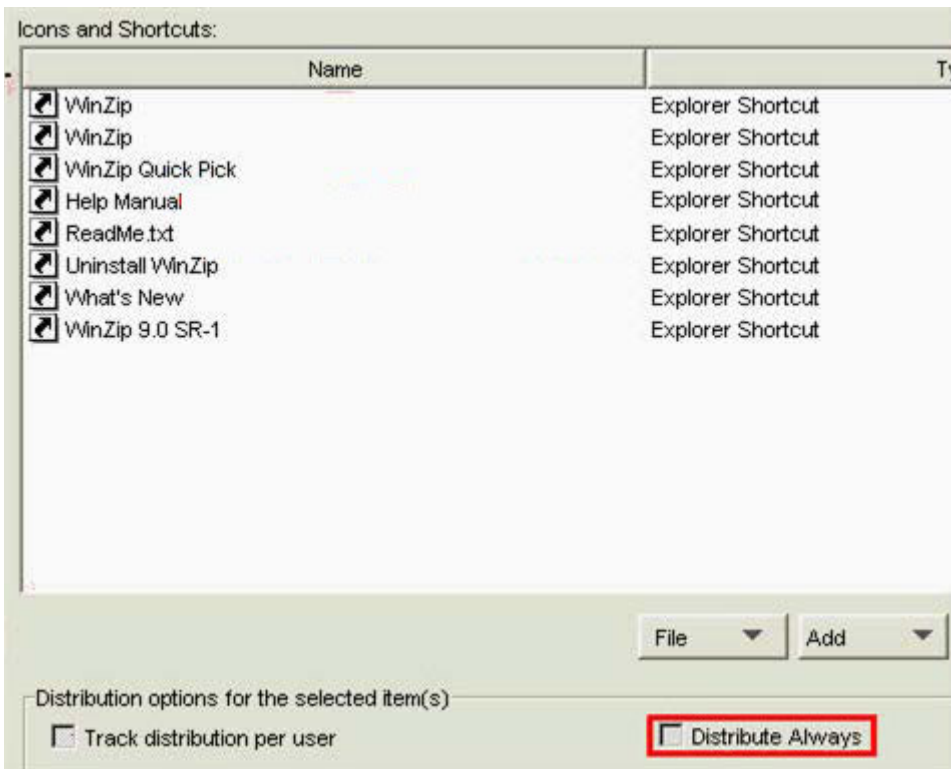
Exhibit:



Click the option you would use to ensure icons and shortcuts are created or deleted each time the directory-enabled application is distributed.

Answer:

Explanation:



QUESTION 226:

Which ZENworks Application Management feature allows administrators to install applications after normal working hours?

- A. Application caching
- B. Lights-out distribution
- C. Application load balancing
- D. Location-independent access
- E. Application fault-tolerance
- F. Push-pull application distribution

Answer: B

QUESTION 227:

Which Personality Migration component is used to control how the DNA engine functions?

- A. DNA files

- B. Log files
- C. Options file
- D. Template files
- E. Application scripts

Answer: C

QUESTION 228:

Which Workstation Inventory component converts ZENworks 3.2 inventory information to the format required by ZENworks 6.5 Desktop Management?

- A. Storer
- B. Sender
- C. TCP Receiver
- D. STR Converter
- E. Dictionary Provider
- F. Intermediate Server

Answer: D

QUESTION 229:

To view the hardware configuration data on a workstation that ZENworks will use to determine if an imaging policy should be applied, you can boot the workstation from the ZENworks imaging CD or boot diskettes. Then, at the bash prompt, you should enter which command?

- A. img.s
- B. img info
- C. imaging.s
- D. img config
- E. img policy
- F. img display
- G. imaging dump
- H. img screendump

Answer: B

QUESTION 230:

DRAG DROP

Match each ZENworks 6.5 Desktop Management architecture component with the correct description.

Components		Descriptions
Middle Tier	Place here	Provides the core services of ZENworks
Backend Server	Place here	Services requests and exchanges data with clients
Workstation Agents	Place here	Provides services that allow ZENworks to manage the workstation

Answer:

Explanation:

	Descriptions
Backend Server	Provides the core services of ZENworks
Middle Tier	Services requests and exchanges data with clients
Workstation Agents	Provides services that allow ZENworks to manage the workstation

QUESTION 231:

You created a server policy package and associated it with an organizational unit. Where are the policies applied?

- A. To all ZENworks back-end servers
- B. To all objects in the tree that are valid types for the package
- C. To all objects on the server that are valid types for the package
- D. To all objects in the container that are valid types for the package

Answer: D

QUESTION 232:

You're installing the Middle Tier Server on your NetWare 6.5 server. The users in your tree that will use the Middle Tier Server are in MKT.SLC.DA, DEL.DA, IS.FOPS.SLC.DA, REMOTE.SYD.DA, REMOTE.TXL.DA, and IS.TYO.D

A. In the

ZENworks Users Context page of the Middle Tier Server installation program, what should you enter as the eDirectory context for user objects?

A. DA

B. SLC.DA and DEL.DA

C. TXL.DA and TYO.DA

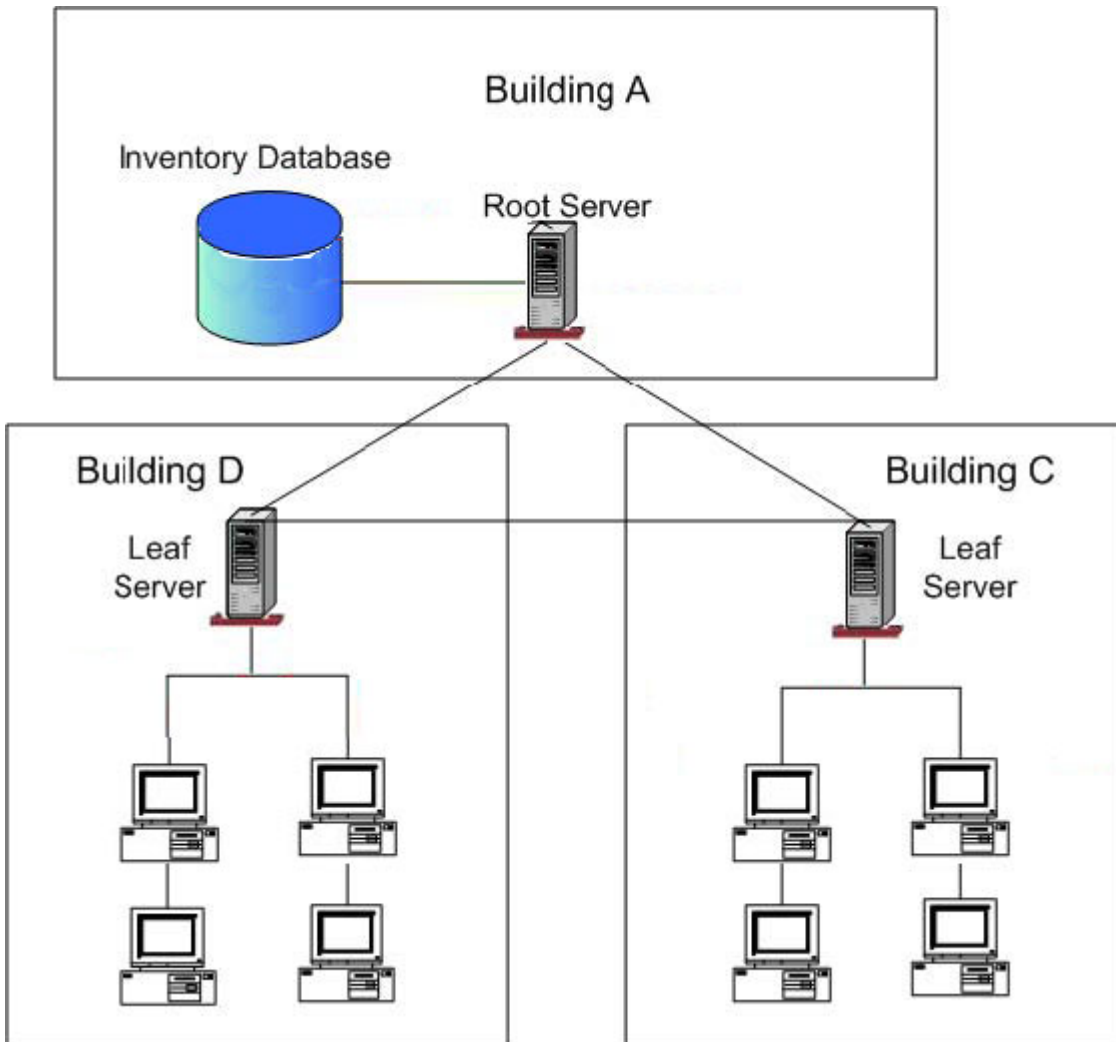
D. SLC.DA, DEL.DA, SYD.DA, TXL.DA, and TYO.DA.

E. MKT.SLC.DA, DEL.DA, IS.FOPS.SLC.DA, REMOTE.SYD.DA, REMOTE.TXL.DA, and IS.TYO.DA

Answer: A

QUESTION 233:

Exhibit:



You are creating a plan for an inventory deployment. According to your graphic, how many workstations can you support?

- A. 100
- B. 500
- C. 1,000
- D. 5,000
- E. 10,000

Answer: E

QUESTION 234:

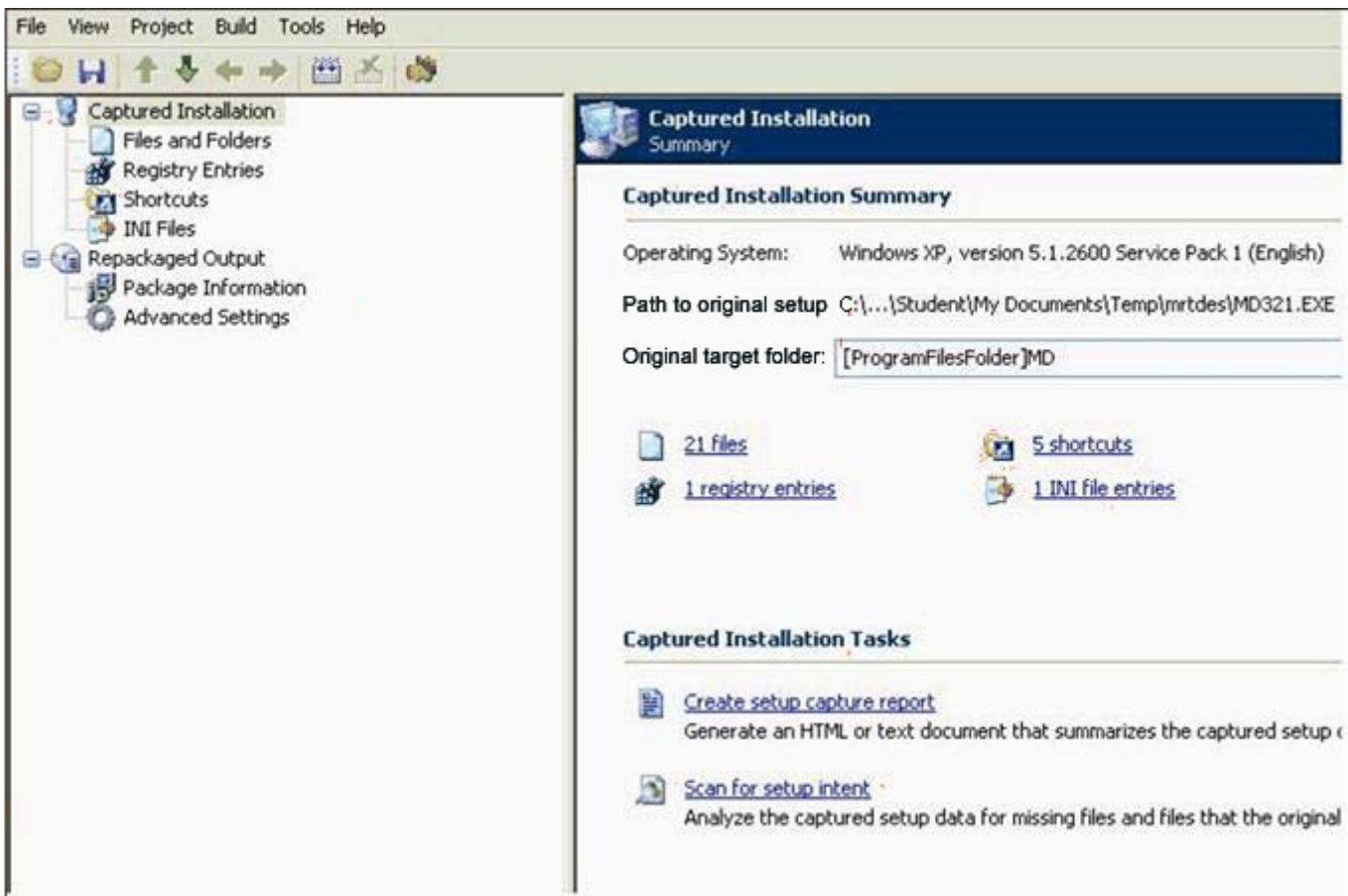
When using a registry key to enable workstations to locate your Import server, which values must you create within the zenwsreg key? (Choose 2.)

- A. Zwsreg
- B. ImportKey
- C. ImportPolicy
- D. ImportServer
- E. ZenwsregKey
- F. ZenwsregServer
- G. ZenwsregPolicy

Answer: C,D

QUESTION 235:

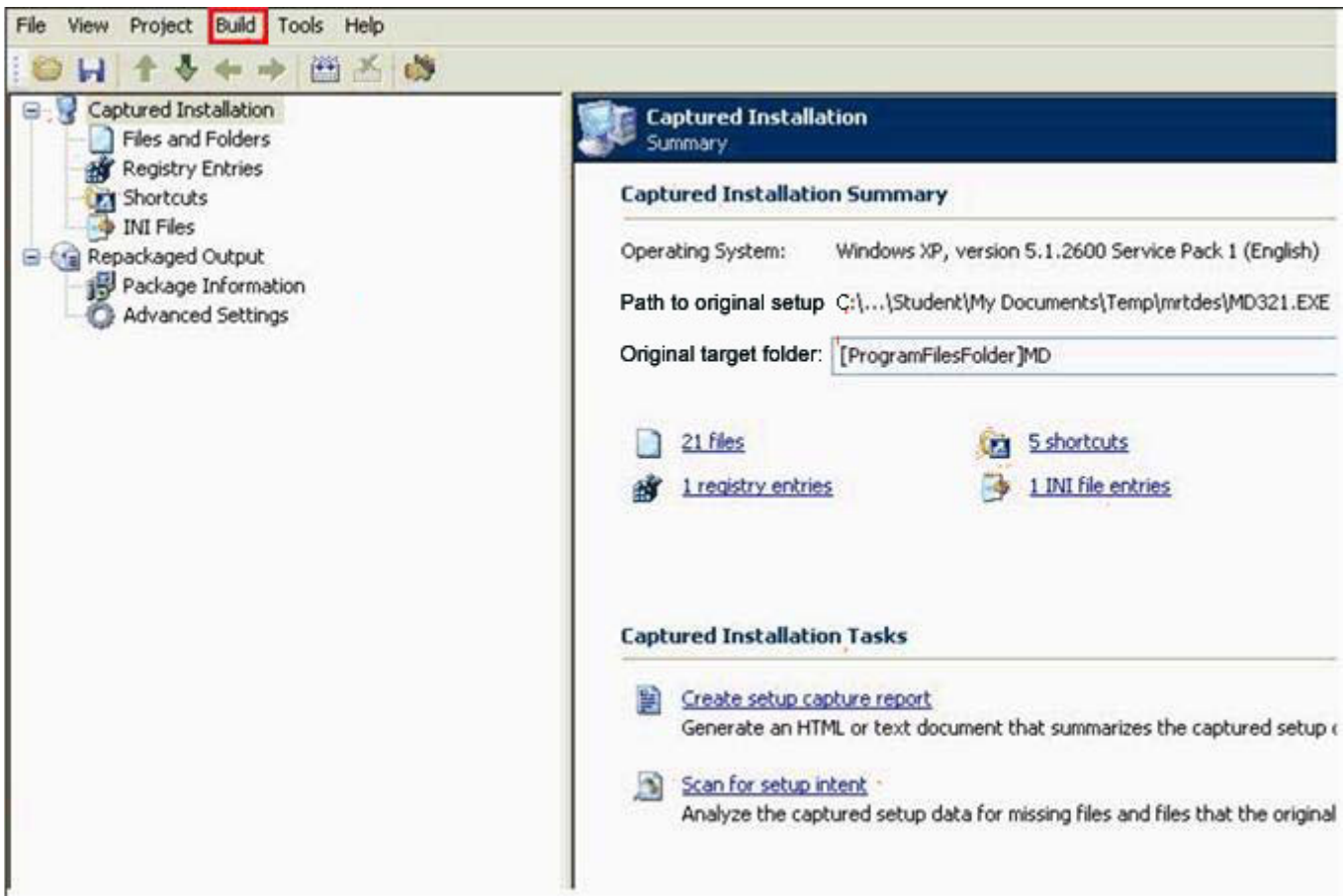
Exhibit:



Click the option in the Repackager screen you would use to create an MSI package from the settings captured from the legacy installation routine.

Answer:

Explanation:



QUESTION 236:

Where does Novell recommend that InstallShield AdminStudio be installed in your network?

- A. On your administrative workstation.
- B. On any NetWare 6.5 server in your tree.
- C. On a clean Windows 2000 or 2003 lab server.
- D. On the workstation of a typical user in your network.
- E. On a clean workstation that has no applications installed.
- F. On any Windows 2000 or 2003 Domain server in your network
- G. On the same workstation where MSI packages will be captured and created.
- H. On a clean NetWare 6.5 server installed in its own tree with no other applications installed.

Answer: A

QUESTION 237:

If you're using the Hosts file or DNS to provide host name resolution for your ZENworks Automatic Workstation Import service, what host name must you configure to resolve to your Import server's IP address?

- A. ZWSREG
- B. ZIMPORT
- C. ZENWSREG
- D. ZWSIMPORT
- E. ZENWSIMPORT
- F. You use your Import server's host name, such as DA1 or NTI-PROVO.

Answer: E

QUESTION 238:

Your users use Windows XP workstations. You've implemented Dynamic Local User policies in your eDirectory tree. Which Desktop Management Agent option should you be sure to enable when installing the agent?

- A. Use Local Policies
- B. Disable Novell Client on this Workstation
- C. Limit Searching to the Following ZENworks Tree
- D. Display ZENworks Middle Tier Server Authentication Dialog
- E. Allow Users to Change the Middle Tier Server Address on Authentication

Answer: D

QUESTION 239:

Exhibit:

```
<!--param name=\"SingleTree\" value=\"DA-TREE\"-->
<!--param name=\"Portalview\" value=\"false\"-->
<!--param name=\"BannerURL\" value=\"http://dal.da.com/banner.html\"-->
<!--param name=\"BannerHeight\" value=\"80\"-->
<!--param name=\"ShowTree\" value=\"true\"-->
<!--param name=\"ShowTasks\" value=\"false\"-->
<!--param name=\"AppDisplayType\" value=\"0\"-->
<!--param name=\"ShowAppFrameNavigation\" value=\"true\"-->
<!--param name=\"ShowIEToolbarButton\" value=\"true\"-->
```

Click on the parameter in the Myapps.html file you would edit if you want to hide the left folder view frame of the Application Browser view.

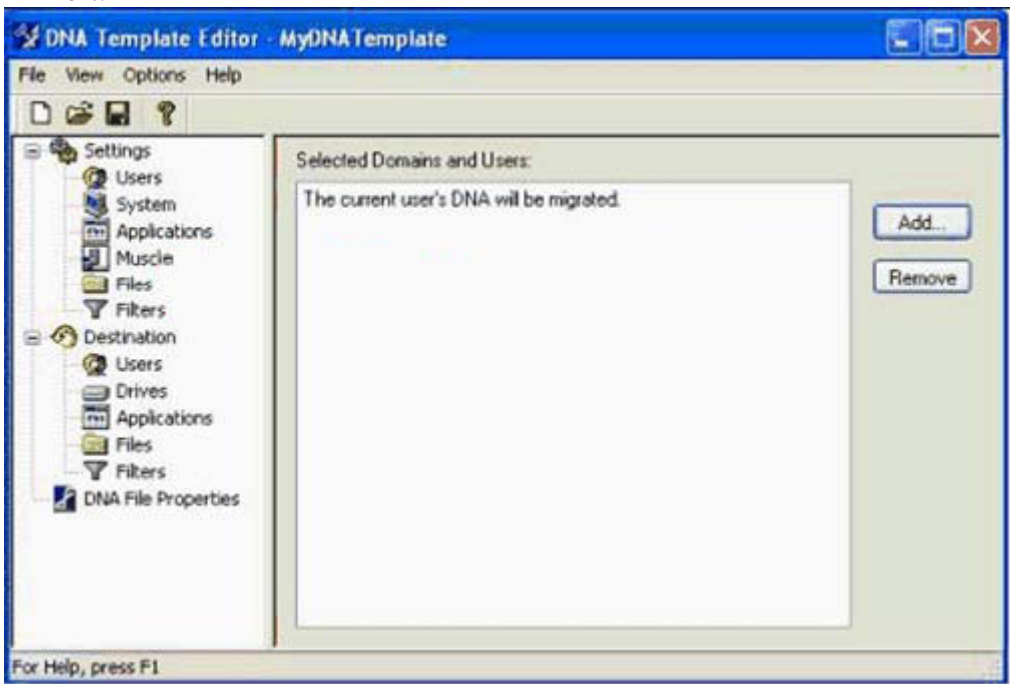
Answer:

Explanation:

```
<!--param name=\"SingleTree\" value=\"DA-TREE\"-->
<!--param name=\"Portalview\" value=\"false\"-->
<!--param name=\"BannerURL\" value=\"http://dal.da.com/banner.html\"-->
<!--param name=\"BannerHeight\" value=\"80\"-->
<!--param name=\"ShowTree\" value=\"true\"-->
<!--param name=\"ShowTasks\" value=\"false\"-->
<!--param name=\"AppDisplayType\" value=\"0\"-->
<!--param name=\"ShowAppFrameNavigation\" value=\"true\"-->
<!--param name=\"ShowIEToolbarButton\" value=\"true\"-->
```

QUESTION 240:

Exhibit:



Click the option you would select to migrate users' desktop settings.

Answer:

Explanation:

