

Actualtests.com

The Power of Knowing



Exam : 050-690

Title : Novell Network Management; Netware 6.5

Ver : 11-12-2008

QUESTION 1:

In which container is the organizational CA object found in your eDirectory tree?

- A. KAP
- B. NMA5
- C. [ROOT]
- D. Security
- E. The same container where the server has been installed.

Answer: D

QUESTION 2:

You're configuring an SLP Directory Agent on your NetWare 6.5 server. You want to statically configure your server to communicate with another Directory Agent whose IP address is 10.0.0.4. This server resides on a different network segment than your server. Which of the following is the correct command to enter in the SLP.CFG file to accomplish this?

- A. DA=10.0.0.4
- B. SLPDA=10.0.0.4
- C. DA IPV4 10.0.0.4
- D. DA IPV4, 10.0.0.4
- E. SLPDA IPV4 10.0.0.4
- F. SLPDA IPV4, 10.0.0.4

Answer: D

QUESTION 3:

Deployment Manager fails when run from the NetWare 6.5 Operating System CD on your Windows 2000 Professional workstation with Novell Client 4.83 installed. What is the cause?

- A. Deployment Manager requires Windows XP Home edition.
- B. Deployment Manager is not compatible with Novell Client 4.83.
- C. You must upgrade to Internet Explorer 6.0 or later on the workstation.
- D. Deployment Manager is not compatible with Windows 2000 Professional.
- E. Deployment Manager must be installed on the workstation before running the program.
- F. The version of Deployment Manager on the Operating System CD only runs on Windows 95/98 workstations.

Answer: B

QUESTION 4:

What is another name for the server certificate?

- A. WEP key
- B. Key material object
- C. Certificate authority
- D. Certificate signing request

Answer: B

QUESTION 5:

Which statements are true regarding subordinate reference replicas? (Choose 2)

- A. There can be multiple subordinate references per partition.
- B. Subordinate references must reside on every server in the tree.
- C. Subordinate references link a parent partition with its child partition.
- D. Subordinate references can be changed to be a master replica without losing any information.
- E. Subordinate references should be removed to help reduce traffic across the communication channel.

Answer: A,C

QUESTION 6:

Which command will enable Transition Tracking System (TTS) on an NSS volume named DATA?

- A. TTS
- B. NSS /TTS=DATA
- C. TTS VOLUME=DATA
- D. NSS /TRANSACTION=DATA
- E. NSS /TRANSACTIONTRACKING=DATA

Answer: D

QUESTION 7:

You just deleted the DATA volume from your NetWare 6.5 server. You realize that this was a mistake and you need to restore it. By default, how long do you have before the volume is automatically purged?

- A. 12 hours

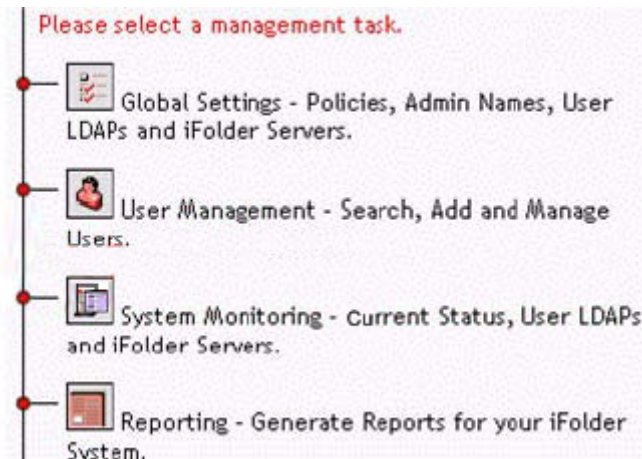
- B. 36 hours
- C. 48 hours
- D. 72 hours
- E. 96 hours
- F. It's too late, the volume has been purged. You must recreate it and restore data from a back up device.

Answer: E

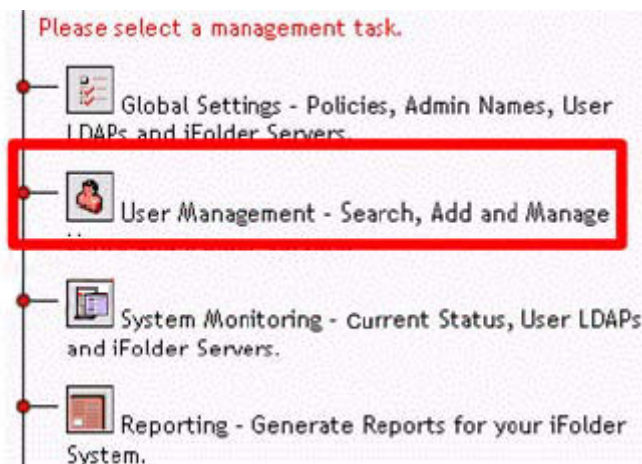
QUESTION 8:

HOTSPOT

Click the Server Management Console management task you would use to recover a forgotten pass phrase.



Answer:



QUESTION 9:

Your organization is implementing an e-commerce web site where external customers

can shop for and purchase products. It's imperative that you establish a secure web site to do this. Which type of certificate authority should you use?

- A. Public Certificate Authority
- B. Internal Certificate Authority
- C. External Certificate Authority
- D. Integrated Certificate Authority

Answer: C

QUESTION 10:

In a time provider group, which server carries the most weight when voting on a time?

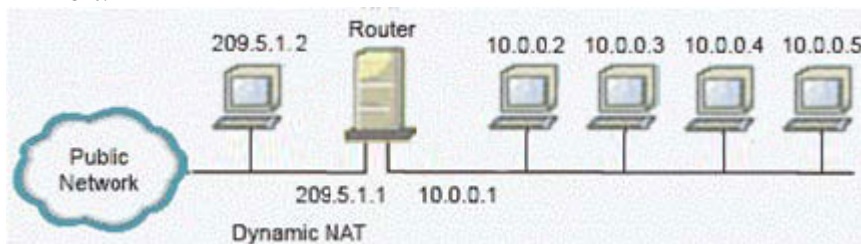
- A. Master
- B. Primary
- C. Reference
- D. Secondary
- E. Single reference

Answer: C

QUESTION 11:

You've configured your NetWare 6.5 server to function as a Dynamic NAT router between two network segments, as shown in the exhibit. The workstations on the private segment are running Windows 2000. The workstations on the public segment are running Windows XP. A user on the public segment whose IP address is 209.5.1.2 wants to access a shared folder on a workstation installed on the private segment whose IP address is 10.0.0.2. Will the user be able to accomplish this?

Exhibit:



- A. No, Dynamic NAT doesn't support Windows shared folders.
- B. No, Dynamic NAT isn't supported by Windows 2000 systems.
- C. No, you must issue the SET ALLOW DYNAMIC PASSTHRU=ON command on the server first.
- D. Yes, Dynamic NAT routing allows bi-directional shared folder access between segments.
- E. No, Dynamic NAT doesn't allow hosts on the public segment to access hosts on the private segment.

Answer: E

QUESTION 12:

You are upgrading a NetWare 6.0 server to NetWare 6.5. What command should you use to mount the NetWare 6.5 Operating System CD as a volume on your NetWare 6.0 server?

- A. CD MOUNT ALL
- B. LOAD NTFS.NLM
- C. LOAD NTFS.NSS
- D. LOAD CDROM.NSS
- E. LOAD CD9660.NSS
- F. LOAD CD9660.NLM
- G. LOAD ISO9660.NSS
- H. LOAD ISO9660.NLM
- I. MOUNT -T ISO9660

Answer: E

QUESTION 13:

You are a regional network administrator remotely upgrading a NetWare 5.1 server to NetWare 6.5. The NetWare 5.1 server has 512 MB of RAM, a 180 GB RAID 5 disk array with a 1 GB DOS partition, and Support Pack 6 installed. Your user object has the Supervisor right to the container where the server resides and the Browse right to the root of the tree. Will the upgrade be successful?

- A. No, the DOS partition is too small.
- B. No, the server doesn't have enough RAM.
- C. Yes, the system meets all prerequisite requirements.
- D. No, you must have the Supervisor right to the root of the tree.
- E. No, you must first install Support Pack 7 on the NetWare 5.1 server.
- F. No, you can't remotely upgrade a server that uses a RAID disk array.
- G. No, you can't perform a Remote Upgrade on a NetWare 5.1 server. You must use an In-Place Upgrade.

Answer: D

QUESTION 14:

In Public Key Cryptography, the _____ key is used to decrypt an encrypted transmission.

Answer:

Answer: PRIVATE

QUESTION 15:

Which parameter allows you to set the location in your eDirectory tree where user accounts exist, allowing older versions of the Novell Client that aren't directory-aware to authenticate to the server?

- A. User Context
- B. Primary Server
- C. Bindery Context
- D. Preferred Server
- E. Emulation Context
- F. Compatibility Mode Driver
- G. NetWare 3 Emulation Mode

Answer: C

QUESTION 16:

Which time server type adjusts its clock 50% per polling interval?

- A. Master
- B. Primary
- C. Secondary
- D. Reference
- E. Single reference
- F. Secondary reference

Answer: B

QUESTION 17:

Which is an example of the single reference time synchronization method for a network that has 15 NetWare 6 servers?

- A. 1 primary time server and 14 secondary time servers
- B. 2 primary time servers and 13 secondary time servers
- C. 1 single reference time server and 14 secondary time servers
- D. 2 single reference time servers and 13 secondary time servers
- E. 1 reference time server, 2 primary time servers, and 12 secondary time servers
- F. 1 single reference time server, 1 primary time server, and 13 secondary time servers

Answer: C

QUESTION 18:

You recently completed a Remote Upgrade to NetWare 6.5 on a server located in your organization's Baltimore, MD. office. You realize that you forgot to install MySQL on the server during the upgrade. Which NetWare utilities can you use to remotely install this product? (Choose 2)

- A. iMonitor
- B. iManager
- C. ConsoleOne
- D. Deployment Manager
- E. NetWare Administrator
- F. NetWare GUI Install utility using Remote Manager

Answer: D,F

QUESTION 19:

You want to upgrade a NetWare 6 server with Support Pack 2 to NetWare 6.5. The server hardware uses a Pentium III 500 MHz Celeron CPU, 512 MB RAM, an 8 GB hard disk drive with a 200 MB DOS partition, and a USB mouse. Can this server be upgraded?

- A. Yes, the server meets all prerequisite requirements.
- B. No, NetWare 6.5 requires a PIII 750 MHz CPU or later.
- C. No, NetWare 6.5 isn't compatible with Celeron processors.
- D. No, the server's CPU is too slow and the hard disk drive is too small.
- E. No, the server's DOS partition is too small and USB mice aren't supported.
- F. No, the server doesn't have enough RAM and must have Support Pack 3 or later applied.
- G. No, the server's DOS partition is too small and must have Support Pack 3 or later applied.

Answer: G

QUESTION 20:

Which statements about using both SLP and configured lists for time synchronization are true? (Choose 2)

- A. Using both adds extra traffic on the network.
- B. Using both provides fault tolerance for time synchronization.
- C. Time doesn't synchronize if both SLP and configured lists are used.
- D. Using both allows IP and IPX servers to synchronize with each other.
- E. Using both shortens the amount of time it takes to synchronize time throughout the network.

Answer: A,B

QUESTION 21:

Which protocol is the CIFS implementation in NetWare 6.5 based on?

- A. Network File System
- B. Apple File Protocol
- C. Server Message Block
- D. Sequenced Packet Exchange
- E. Internetwork Packet Exchange

Answer: C

QUESTION 22:

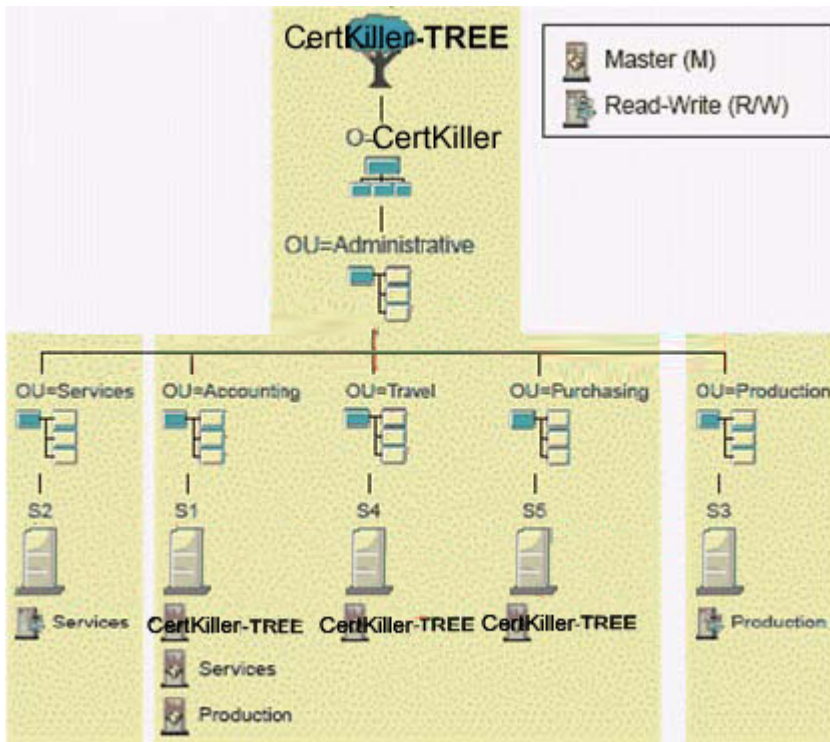
Which of the following are true about the Bottom-Up eDirectory upgrade strategy?
(Choose 2)

- A. It's relatively easy to plan and organize.
- B. Replica synchronization issues are isolated.
- C. The risk of problems are increased due to replica synchronization issues.
- D. Errors encountered during the upgrade are less likely to be propagated to the entire tree.
- E. Errors potentially introduced during the upgrade process could propagate throughout the tree.

Answer: B,D

QUESTION 23:

Exhibit:



Given the partition and replication table shown in the exhibit, on which servers would subordinate reference replicas for the Services partition be automatically placed?

- A. S2
- B. S3
- C. S1 and S2
- D. S1 and S4
- E. S4 and S5
- F. S3 and S5
- G. S2, S5, and S4
- H. S3, S4, and S5

Answer: E

QUESTION 24:

Your eDirectory tree currently has a NetWare 4.2 server residing in it. You plan to upgrade a NetWare 5.1 server in your tree to NetWare 6.5. What must you do to accomplish this?

- A. Remove the NetWare 4.2 server from the tree.
- B. Run the Compatibility Mode Driver on the NetWare 5.1 server.
- C. Implement Universal Password before upgrading to NetWare 6.5.
- D. Run Deployment Manager and select the Prepare for CIFS/AFP option.
- E. Run Deployment Manager and select the Update Certificate Authority Objects option.

F. Run Deployment Manager and select the Generate GUIDs on NetWare 4 Servers option.

Answer: F

QUESTION 25:

Which object lets you see what server a user license is assigned to?

- A. The license unit object
- B. The license container object
- C. The license certificate object
- D. The license service provider object
- E. The server object that you think the MLA license was assigned to

Answer: C

QUESTION 26:

Which statement about time stamps is true?

- A. Time stamps propagate the correct time throughout the network.
- B. Time stamps are packets sent to and from the dedicated time source.
- C. Time stamps allow changes made within files to be processed in correct order.
- D. Time stamps allow single reference time servers to synchronize with primary servers.
- E. Time stamps allow changes made in the eDirectory database to be processed in sequential order.

Answer: E

QUESTION 27:

Which file is used to configure the Apache configuration daemon?

- A. Sys:\Etc\Ap2cfg.conf
- B. Sys:\Etc\Startup.conf
- C. Sys:\Apache2\Conf\Daemon\Startup.conf
- D. Sys:\Etc\Apache2\Conf\Daemon\Ap2cfg.conf
- E. Sys:\Apache2\Conf\Daemon\Startup.properties
- F. Sys:\Etc\Apache2\Conf\Daemon\Startup.properties

Answer: E

QUESTION 28:

HOTSPOT

You need to create an LDIF file that will create a new Organization object in your tree named Users. You've created the LDIF file shown in the figure; however, when you try to import it, the process fails and the object isn't created.

Click on the part of the file that is causing the error to occur.

```
dn: o=Users
changetype: moddn
o: Users
objectClass: organization
objectClass: ndsLoginProperties
objectClass: ndsContainerLoginProperties
objectClass: top
ACL: 2#entry#o=Users#loginScript
ACL: 2#entry#o=Users#printJobConfiguration
```

Answer:

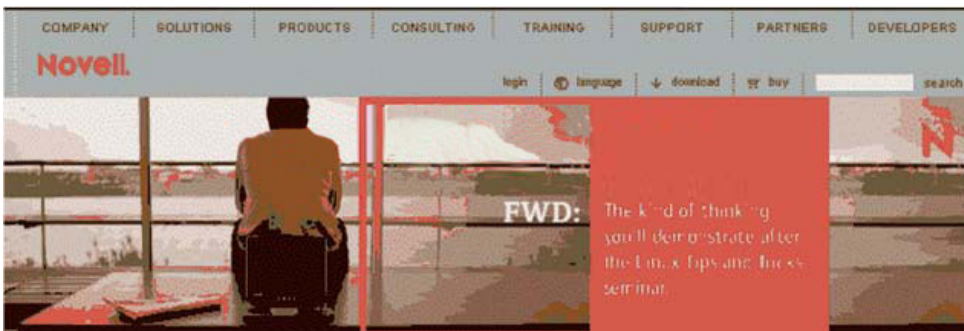
```
dn: o=Users
changetype: moddn
o: Users
objectClass: organization
objectClass: ndsLoginProperties
objectClass: ndsContainerLoginProperties
objectClass: top
ACL: 2#entry#o=Users#loginScript
ACL: 2#entry#o=Users#printJobConfiguration
```

QUESTION 29:

HOTSPOT

You need to download the latest NetWare 6.5 Support Pack to solve a network problem.

Click the link on the web page displayed that will allow you to get this file.



Answer:



QUESTION 30:

Which command-line switch, when used with the NetWare FTP server NLM load command will enable Anonymous user access and automatically create an Anonymous user?

- A. /a
- B. -a
- C. -anon
- D. -aftp
- E. /aftp
- F. /anon

Answer: B

QUESTION 31:

Which activities are appropriate to help you be better prepared for recurring network problems? (Choose 3)

- A. Maintain an updated network map.
- B. Remove unnecessary components.
- C. Perform regular network health checks.
- D. Keep documentation available for reference.
- E. Open an electronic incident with Novell support.

Answer: A,C,D

QUESTION 32:

Which part of your eDirectory tree should contain the fewest partitions?

- A. The top
- B. The bottom
- C. Directly above the first level of organizational unit objects.

D. Directly beneath the first level of organizational unit objects.

Answer: A

QUESTION 33:

Which are functions provided by the Service Location Protocol (SLP) on a NetWare 6.5 server? (Choose 2)

- A. Detects malformed advertisement packets.
- B. Provides client discovery of network services.
- C. Encapsulates SAP packets for IPX hosts on a network.
- D. Dynamically assigns IP addresses to hosts on the network.
- E. Converts registered, public IP addresses into non-registered, private IP addresses.
- F. Updates the DNS server instantly with address assignments made by your DHCP server.

Answer: B,C

QUESTION 34:

NAT provides protection at the _____ layer of the OSI model.

- A. Session
- B. Network
- C. Physical
- D. Data Link

Answer: B

QUESTION 35:

CORRECT TEXT

During a server _____, you first install a generic NetWare 6.5 server. You then move the eDirectory tree and the file system from your existing server to the newly installed NetWare 6.5 server.

Answer: MIGRATION

QUESTION 36:

Which NLM acts as a relay agent to forward DHCP requests from one network segment to another?

- A. RELAY.NLM
- B. DHCPRLY.NLM

- C. DHCPFWD.NLM
- D. RELAYAGT.NLM
- E. DHCPSTVR.NLM
- F. BOOTPFWD.NLM

Answer: F

QUESTION 37:

After a workstation has received DHCPOFFER messages from one or more DHCP servers, which DHCP message is sent by a workstation when it has chosen a DHCP server to obtain an IP address from?

- A. DHCPACK
- B. DHCPTEST
- C. DHCPOFFER
- D. DHCPINITIALIZE
- E. DHCPREQUEST
- F. DHCPDISCOVER

Answer: E

QUESTION 38:

Which command performs a read-only assessment of the NSS pool named APPS_POOL?

- A. NSS /VERIFY APPS_POOL
- B. NSS /REBUILD APPS_POOL
- C. NSS /CHECKPOOL APPS_POOL
- D. NSS /POOLVERIFY=APPS_POOL
- E. NSS /CHECK /POOL=APPS_POOL

Answer: D

QUESTION 39:

Which statements are true regarding the master replica? (Choose 2)

- A. It supports authentication.
- B. It controls partition boundary changes.
- C. It only contains the partition root object.
- D. It cannot be created by the network administrator.
- E. There can be multiple master replicas per partition.

Answer: A,B

QUESTION 40:

What is the top-most container called in all eDirectory partitions?

- A. Root
- B. Parent
- C. Master
- D. Reference
- E. Partition root

Answer: E

QUESTION 41:

Which of the following terms refers to the amount of data that might not be successfully synchronized to all replicas in the ring?

- A. Errors
- B. Obituary
- C. Maximum Ring Delta
- D. External Reference
- E. Last Successful Sync

Answer: C

QUESTION 42:

The Novell Client for Windows NT, 2000, and XP is integrated with which standard Windows components? (Choose 4)

- A. Favorites
- B. My Computer
- C. System Tray
- D. My Documents
- E. Control Panel
- F. Windows Explorer
- G. Recent Documents
- H. Network Neighborhood

Answer: B,C,F,H

QUESTION 43:

When preparing a server for an upgrade to NetWare 6.5, which tasks should you perform? (Choose 3)

- A. Disconnect all users and disable user login.
- B. Remove (uninstall) all Support Packs and patches.
- C. Make a backup of the eDirectory tree and the server file system.
- D. If running ZENworks for Servers 2, install ZENworks for Servers 3 prior to the upgrade.
- E. Use a partition management tool to shrink the server's DOS partition to the minimum size required by NetWare 6.5.
- F. Ensure all applications hosted by the server are up and running during the upgrade so they will be detected by the upgrade utility.

Answer: A,C,D

QUESTION 44:

HOTSPOT

You need to temporarily unload DHCP\$SRVR.NLM on your server. Click the Remote Manager option you would use to do this.



Answer:



QUESTION 45:

Which password does the CIFS service on your NetWare 6.5 server use, by default, to authenticate clients after initial installation of the operating system ?

- A. NIS Password
- B. LDAP Password
- C. Simple Password
- D. Universal Password
- E. eDirectory Password

Answer: C

QUESTION 46:

Certkiller changed departments. You updated Certkiller's user object to reflect her new phone number. What is sent to the other replicas of this partition regarding this change?

- A. The entire partition

- B. The phone number only
- C. The Certkiller user object
- D. The required fields of the user object
- E. The container where the Certkiller object resides

Answer: B

QUESTION 47:

Which scripting languages are supported by the NetWare 6.5 Web and Application Services? (Choose 3)

- A. PHP
- B. C++
- C. OpenScript
- D. Novell WebScript
- E. Novell ScriptPages (NSP)
- F. Active Server Pages (ASP)
- G. Universal Component System (UCS)

Answer: A,E,G

QUESTION 48:

When configuring DDNS, which object identifies the IP addresses available for dynamic assignment?

- A. Subnet Pool object
- B. DHCP Server object
- C. DNS-DHCP Locator object
- D. Subnet Address Range object

Answer: D

QUESTION 49:

You are documenting your network to help save time with future troubleshooting. What documentation is beneficial to maintain? (Choose 3)

- A. A log of network configuration changes
- B. A list of current user and file system rights
- C. An illustration detailing the network topology
- D. Network product documentation and support contacts
- E. The baseline performance statistics during after hours network operation

Answer: A,C,D

QUESTION 50:

After you install NetWare 6.5, which utility can you use to install License Service Provider (LSP) software on a server and create an LSP object in the eDirectory tree?

- A. iManager
- B. iMonitor
- C. ConsoleOne
- D. Server Manager
- E. NWCONFIG.NLM

Answer: A

QUESTION 51:

You need to change your web server's configuration using a text editor. Where are configuration parameters for the Apache Web Server 2 stored on a NetWare 6.5 server?

- A. SYS:\ETC\HTTPD.CONF
- B. SYS:\ETC\APACHE.CONF
- C. SYS:\ETC\HTTPD\HTTPD.CONF
- D. SYS:\ETC\APACHE2\HTTPD.CONF
- E. SYS:\APACHE2\CONF\HTTPD.CONF
- F. SYS:\APACHE2\CONF\APACHE.CONF
- G. SYS:\APACHE2\CONF\NWHTTPD.CONF
- H. SYS:\APACHE2\CONF\APACHE2.CONF

Answer: E

QUESTION 52:

In which container can a trusted root object reside in your eDirectory tree?

- A. KAP
- B. NMA5
- C. [ROOT]
- D. Security
- E. A trusted root container
- F. The same container where the server has been installed.

Answer: E

QUESTION 53:

Which is a place holder in the eDirectory tree that contains information about entries the

local server does not hold?

- A. Obituary
- B. Error index
- C. Differential link
- D. External reference
- E. Subordinate reference

Answer: D

QUESTION 54:

Which utilities can you use to configure SET parameters on your NetWare 6.5 server?
(Choose 2.)

- A. CONFIG
- B. INETCFG
- C. iMonitor
- D. iManager
- E. MONITOR.NLM
- F. Remote Manager

Answer: E,F

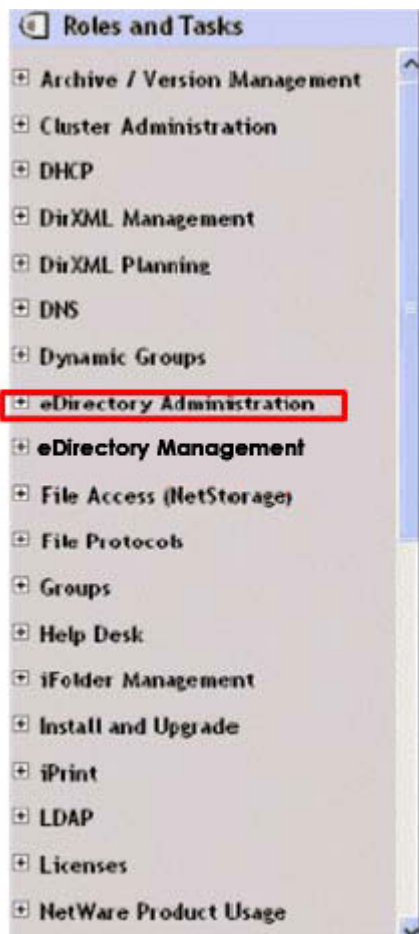
QUESTION 55:

HOTSPOT

Which iManager role would you use to import an LDIF file?

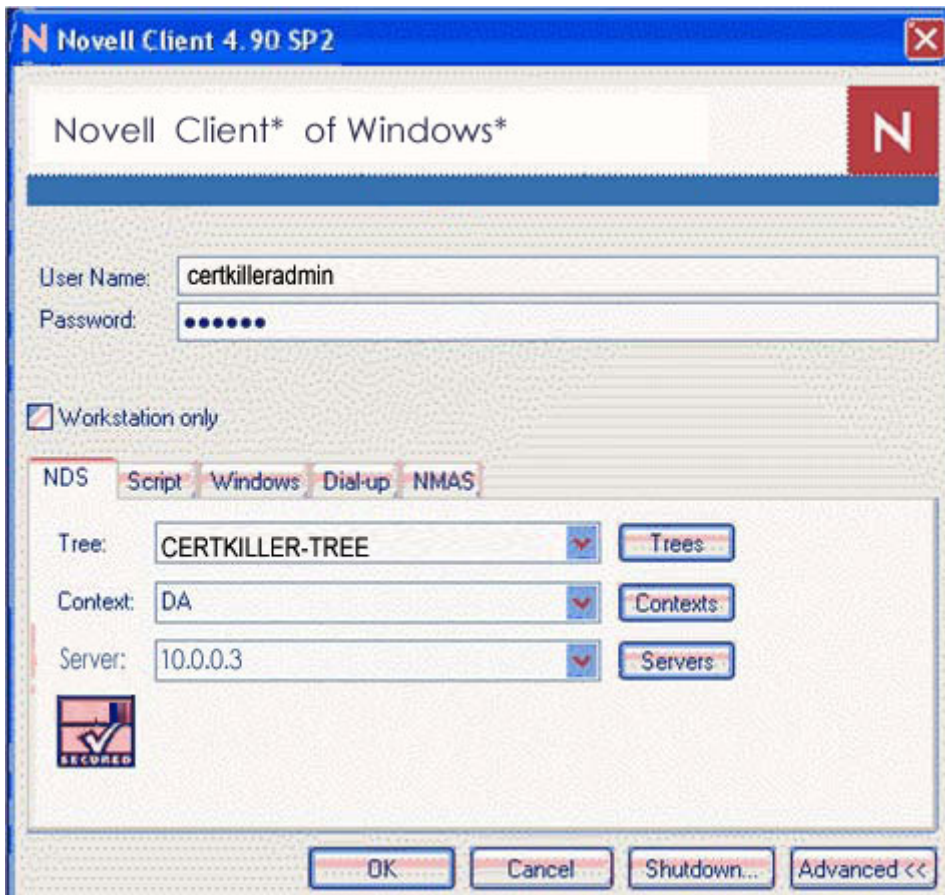


Answer:



QUESTION 56:

Exhibit:



The image shows the Novell Client 4.90 SP2 login window. The title bar reads "Novell Client 4.90 SP2". The main window has a header "Novell Client* of Windows*" with a red "N" logo. Below the header, there are fields for "User Name:" (containing "certkilleradmin") and "Password:" (containing seven dots). A checkbox labeled "Workstation only" is checked. Below this, there are tabs for "NDS", "Script", "Windows", "Dial-up", and "NMAS". The "NDS" tab is selected. Under the "NDS" tab, there are three fields: "Tree:" (containing "CERTKILLER-TREE"), "Context:" (containing "DA"), and "Server:" (containing "10.0.0.3"). To the right of each field is a button: "Trees" for the Tree field, "Contexts" for the Context field, and "Servers" for the Server field. At the bottom left, there is a "SECURED" icon. At the bottom right, there are four buttons: "OK", "Cancel", "Shutdown...", and "Advanced <<".

You are attempting to authenticate to Certkiller -TREE as Certkiller admin.da. You want to connect to server Certkiller whose IP address is 10.0.0.3. You've entered the following information in the Novell Client login screen. Will the authentication process be successful?

- A. No, you can't use an IP address in the Server field.
- B. No, you must use lower-case characters in the Context field.
- C. Yes, the authentication information has been entered correctly.
- D. No, you can't populate the Tree field if you use an IP address in the Server field.
- E. No, if you use an IP address in the Server field, you can't populate the Context field.
- F. No, you can't populate the Context and Tree fields if you use an IP address instead of the server name.

Answer: C

QUESTION 57:

Click the iManager task you would use to restore a deleted NSS volume.



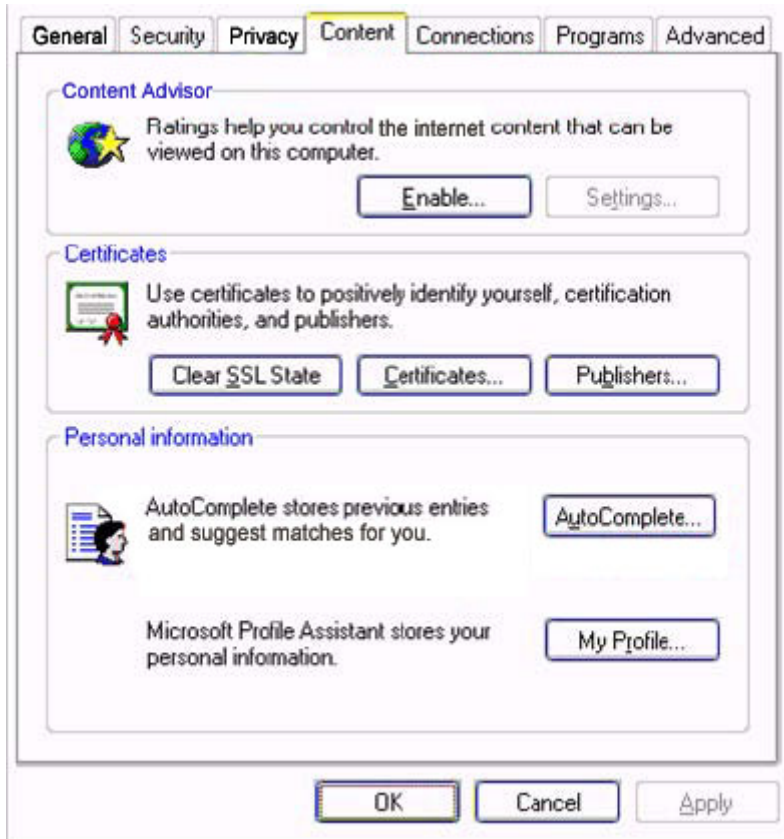
Answer:



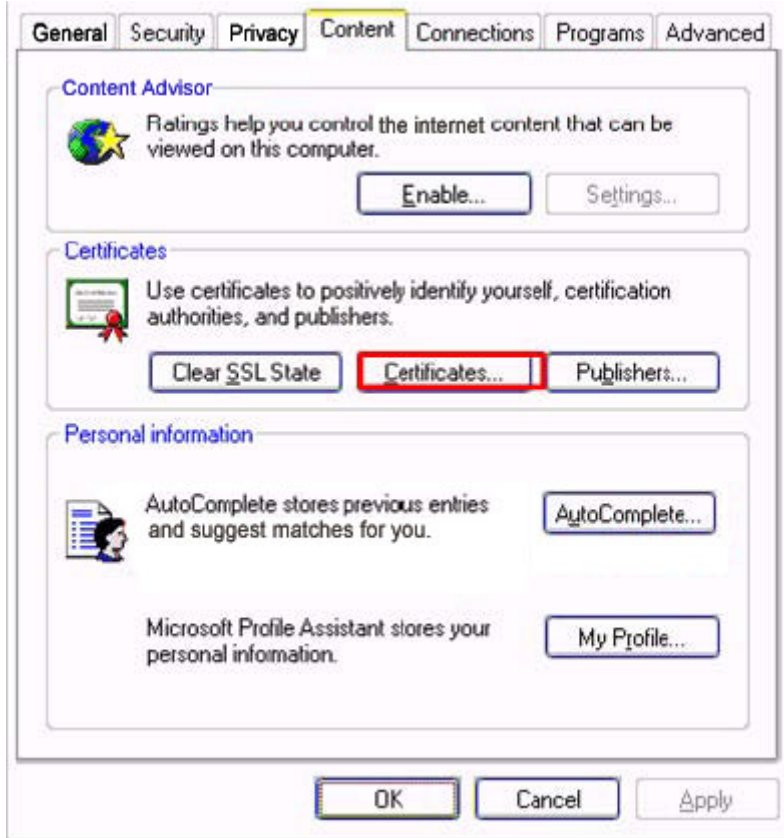
Explanation:

QUESTION 58:

Click the option you would use to add a trusted Certificate Authority to Internet Explorer's list of trusted CAs.



Answer:



QUESTION 59:

Which statement is true when installing licensing certificates in your eDirectory tree?

- A. Users in different contexts cannot use the same license certificate.
- B. User license certificates must reside in the same container as the server object.
- C. Server licenses should reside in a parent container common to all server objects.
- D. A license cannot be installed in more than one container unless you have a licensing agreement.

Answer: D

QUESTION 60:

What's the minimum size the DOS partition must be on a server that is to be upgraded to NetWare 6.5?

- A. 50 MB
- B. 100 MB
- C. 200 MB
- D. 300 MB
- E. 400 MB

F. 500 MB

Answer: F

QUESTION 61:

Which utility lets you change a server from being a secondary time server to a single reference time server?

- A. NDS Manager
- B. MONITOR.NLM
- C. TIMESYNC.NLM
- D. NetWare Administrator

Answer: B

QUESTION 62:

You're installing products on your NetWare 6.5 server. What does the Apache2 Web Server and Tomcat 4 Servlet Container product option do?

- A. Installs an administration instance of Tomcat 4.
- B. Installs an administration instance of the Apache Web Server.
- C. Installs the Apache Web Server and Tomcat 4 for dedicated web hosting.
- D. Installs an administration instance of both the Apache Web Server and Tomcat 4.
- E. Installs both a public instance and an administration instance of Apache Web Server and Tomcat 4.

Answer: C

QUESTION 63:

Which DHCP object is a container object that holds IP address configuration information?

- A. IP Address object
- B. Subnet Pool object
- C. DHCP Server object
- D. DHCP Subnet object

Answer: D

QUESTION 64:

Using the User Access Licensing (UAL) model, a user license is assigned to a user when that user logs in. The license is released from that user after how many days of not

logging in?

- A. 1
- B. 7
- C. 30
- D. 90
- E. 365

Answer: D

QUESTION 65:

Which type of SLP agent is always installed on both servers and clients?

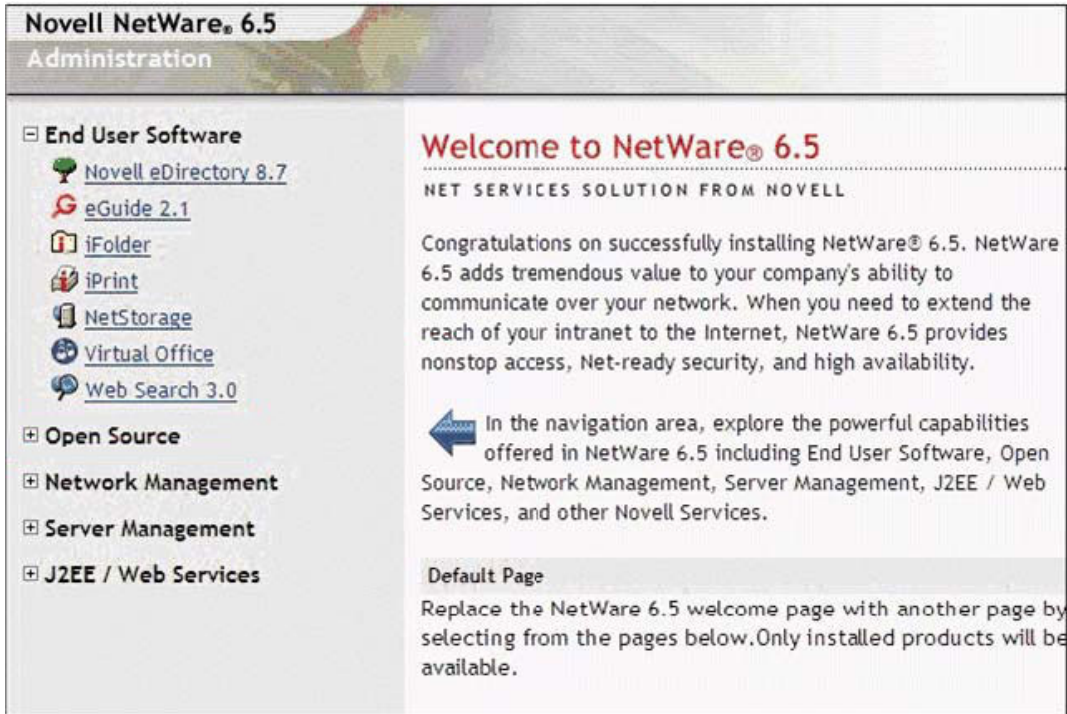
- A. SAP Agent
- B. TCP Agent
- C. User Agent
- D. Service Agent
- E. Directory Agent
- F. Compatibility Agent
- G. Client/Server Agent

Answer: C

QUESTION 66:

HOTSPOT

You need to manage your web server configuration from within a web browser using Apache Manager. Click on the option you would use to access this utility.



Answer:



QUESTION 67:

You are planning to remotely upgrade several of your servers to NetWare 6.5. Which

Novell product can be installed only after a Remote Upgrade to NetWare 6.5 is complete?

- A. MySQL
- B. Rsync
- C. iPrint
- D. iFolder
- E. eDirectory 8.7.3
- F. NetWare FTP Server
- G. Apache Web Server 2
- H. Novell Cluster Services

Answer: H

QUESTION 68:

Which utilities can be used to remotely upgrade an existing NetWare server to NetWare 6.5? (Choose 2)

- A. iMonitor
- B. iManager
- C. ConsoleOne
- D. Remote Manager
- E. Deployment Manager
- F. NetWare Administrator
- G. Server Management Utility

Answer: B,E

QUESTION 69:

Which NLMs must you load to run the Remote Manager service? (Choose 2)

- A. Nrm.nlm
- B. Rman.nlm
- C. Portal.nlm
- D. Remote.nlm
- E. Httpsck.nlm
- F. Remoteman.nlm

Answer: C,E

QUESTION 70:

What are the benefits of using the single reference time method? (Choose 2)

- A. It does not use SLP or SAP.
- B. It does not require configured sources.
- C. It does not require changing the TIMSYNC.CFG file.
- D. It is the most efficient method when there are many sites connected by WAN links.
- E. It does not require time synchronization to be reconfigured when a new server is installed into the tree.

Answer: B,E

QUESTION 71:

You want to enable File Snapshot for all of the NSS volumes on your server. Which command will do this?

- A. NSS /FileSnapshot=on
- B. NSS /FileSnapshot=all
- C. NSS /FileCopyOnWriteSnapshot=on
- D. NSS /FileCopyOnWriteSnapshot=all

Answer: D

QUESTION 72:

Which statement is true regarding the server your License Service Provider (LSP) service is installed on?

- A. It must be installed on a server that holds a master replica of the [Root] partition.
- B. It must be installed on a server that holds a master or read/write replica of the [Root] partition.
- C. It must be installed on a server that holds a master or read/write replica of every partition in the tree.
- D. It must be installed on a server that holds a master or read/write replica of the partition that contains the security container.
- E. It must be installed on a server that holds a master or read/write replica of each partition that contains license certificate objects.

Answer: E

QUESTION 73:

Which are true regarding replica placement in the eDirectory tree? (Choose 2)

- A. There should be at least 3 replicas of each partition.
- B. The maximum number of replicas allowed per server is 25.
- C. The maximum number of replicas allowed per partition is 50.
- D. There should be a replica of the tree root partition on each server in the tree.

E. Subordinate references are automatically put in place by eDirectory and can be used for fault tolerance.

Answer: A,C

QUESTION 74:

Which statement is true regarding a primary time server?

- A. It does not advertise itself as a time provider.
- B. It polls other reference and primary time servers.
- C. It gets its time from a single reference time server.
- D. It cannot coexist with other primary or reference servers.

Answer: B

QUESTION 75:

Which ACU.INI directive specifies that users will be prompted to begin the ACU.EXE upgrade process?

- A. LAUNCHINSTALL=YES
- B. DISPLAYDIALOG=YES
- C. STATUSLOGGING=YES
- D. CLIENTLOCALINSTALL=YES

Answer: B

QUESTION 76:

Which switch can be used when loading Vcu.nlm to automatically remove the original volume after the upgrade process is complete?

- A. /d
- B. /r
- C. /e
- D. /z
- E. /rem

Answer: A

QUESTION 77:

You are upgrading a NetWare 5.1 server to NetWare 6.5. You've mounted your NetWare 6.5 Operating System CD as a volume on your server and started the Install utility in the server's graphical environment. Which file must you select on the NetWare 6.5 Operating

System CD to launch the upgrade?

- A. Product.ni
- B. Upgrade.ni
- C. Product.ips
- D. Upgrade.ips
- E. Nw65prod.ni
- F. Nw65prod.ips

Answer: A

QUESTION 78:

Which switch can be used when loading the DNS service on a NetWare 6.5 server to force a zone transfer to occur?

- A. -u
- B. -z
- C. -s
- D. -l
- E. -zi
- F. -zt
- G. -rp

Answer: E

QUESTION 79:

You need to change the configuration of your Apache 2 Web server. You know this is done using a configuration file that is read by the web server when it starts up. Which is true regarding the Apache Web Server's HTTPD.CONF file?

- A. It's a text file that is configured with SET commands.
- B. It's a binary file that is configured with SET commands.
- C. It's a text file that can be edited only with the Apache Manager web page.
- D. It's a text file that can be edited with Apache Manager or with a text editor.
- E. It's a binary file that can be edited only with the Apache Manager web page.
- F. It's a binary file that can be edited with Apache Manager or with a binary file editor.

Answer: D

QUESTION 80:

Which statements are true regarding the VERIFY and REBUILD commands? (Choose 2)

- A. Run REBUILD before running VERIFY.

- B. REBUILD and VREPAIR are equivalent utilities.
- C. Deactivate storage pools before you run REBUILD.
- D. Only use REBUILD as a last resort to recover the file system.
- E. Volumes do not need to be dismounted when running the VERIFY command.

Answer: C,D

QUESTION 81:

Your organization needs to provide web-hosting services for its business partners. Each partner organization needs to use its own domain name. Your organization already has a NetWare 6.5 server in its Demilitarized Zone (DMZ) hosting your organization's web site using the Apache Web Server 2. To solve this problem, what Apache 2 feature could you implement for each partner organization?

- A. Virtual hosts
- B. Multi-hosting
- C. Multi-threading
- D. Virtual domains
- E. Java Server Pages (JSPs)

Answer: A

QUESTION 82:

Which eDirectory upgrade strategy dictates that you first upgrade the server that holds the master replica of the root partition?

- A. Direct Upgrade
- B. Remote Upgrade
- C. Lateral Upgrade
- D. Top-Down Upgrade
- E. Bottom-Up Upgrade
- F. Roll-Forward Upgrade

Answer: D

QUESTION 83:

What is the maximum recommended number of child partitions per parent partition?

- A. 8
- B. 16
- C. 64
- D. 78
- E. 100

- F. 128
- G. 150
- H. 256

Answer: G

QUESTION 84:

Some users have been assigned a user license, but they log into the network infrequently. You need to release the licenses from these users so regular users can have the licenses assigned to them. Which utility do you use to release licenses from users?

- A. iMonitor
- B. iManager
- C. Remote Manager
- D. NWCONFIG.NLM
- E. Server Manager

Answer: B

QUESTION 85:

Which statements are true regarding eDirectory replicas? (Choose 2)

- A. Replicas are required on single or primary reference servers.
- B. A replica is required on all servers that exist in the eDirectory tree.
- C. Replicas are stored in files contained in a hidden directory on volume SYS.
- D. There are 3 types of replicas: master, read/write, and subordinate reference.
- E. Replicas contain Directory data for objects within the boundaries of a partition.

Answer: C,E

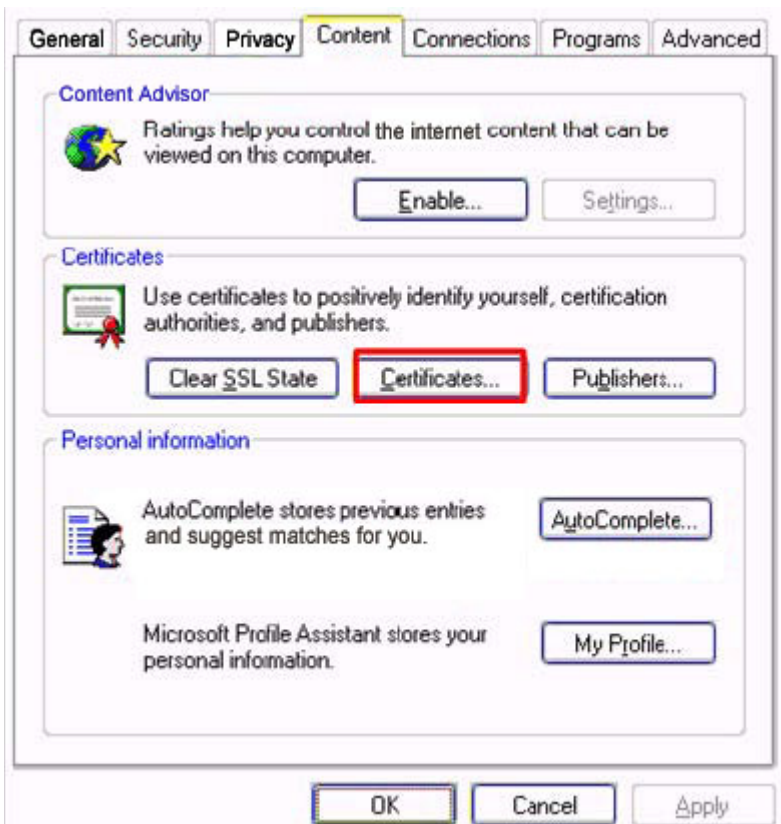
QUESTION 86:

HOTSPOT

Click the option you would use to add a trusted Certificate Authority to Internet Explorer's list of trusted CAs.



Answer:



QUESTION 87:

Which module should you load to run the Novell Certificate Server?

- A. Ca.nlm
- B. Pki.nlm
- C. Kmo.nlm
- D. Csr.nlm
- E. Ncs.nlm
- F. Pubkey.nlm

Answer: B

QUESTION 88:

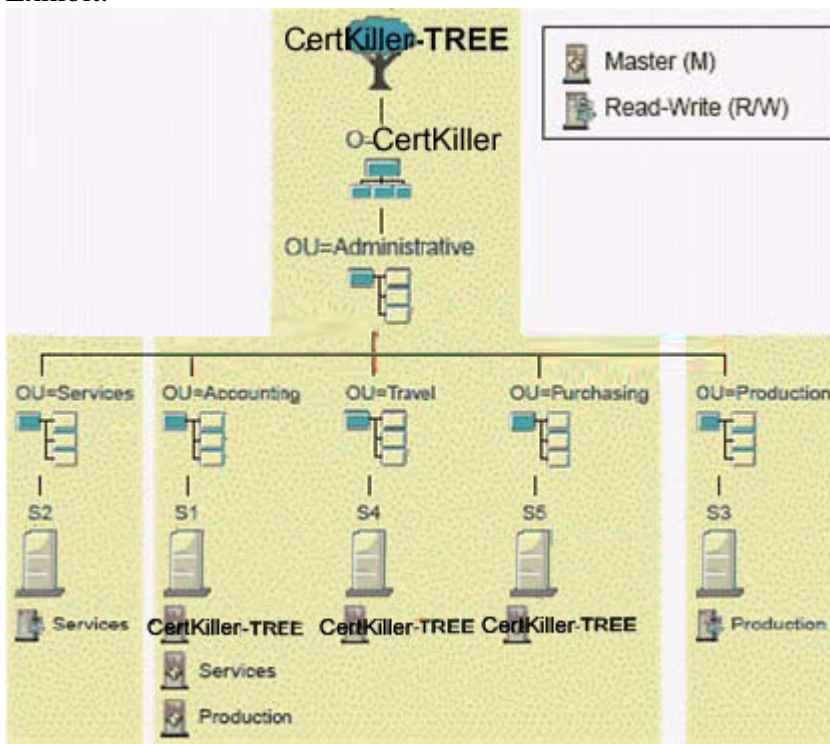
You've just completed a Remote Upgrade to NetWare 6.5 on 4 servers (FS1, FS2, FS3, and FS4) in your tree. Your tree has two partitions. FS1 has a master replica of each partition. FS2 has a read/write replica of each partition. FS3 and FS4 each have a filtered replica of the second partition which allows only user objects to be replicated. Which servers need to have an Unattended Full Repair run on them as part of the post-upgrade process?

- A. FS1
- B. FS4
- C. FS3 and FS4
- D. FS1 and FS2
- E. FS1, FS2, and FS3
- F. FS2, FS3, and FS4
- G. FS1, FS2, FS3, and FS4

Answer: G

QUESTION 89:

Exhibit:



Given the partition and replication table shown in the exhibit, on which servers would subordinate reference replicas for the Services partition be automatically placed?

- A. S2
- B. S3
- C. S1 and S2
- D. S1 and S4
- E. S4 and S5
- F. S3 and S5
- G. S2, S5, and S4
- H. S3, S4, and S5

Answer: E

QUESTION 90:

A single reference server has the time of 03:10:08 and a secondary server in the same tree has the time of 03:10:16. What is the secondary server's time changed to after the first polling interval?

- A. 03:10:08
- B. 03:10:10
- C. 03:10:12
- D. 03:10:14
- E. 03:10:16

Answer: A

QUESTION 91:

Which file is used to specify the context where CIFS users reside in the tree?

- A. Sys:\Etc\Ctxs.cfg
- B. Sys:\Public\Ctxs.cfg
- C. Sys:\Etc\Cifsctxs.cfg
- D. Sys:\System\Ctxs.cfg
- E. Sys:\Public\Cifsctxs.cfg
- F. Sys:\System\Cifsctxs.cfg

Answer: C

QUESTION 92:

When troubleshooting a network problem, what is a beneficial initial step to try prior to developing a detailed problem hypothesis based on network information?

- A. Monitor the network traffic.
- B. Check for and eliminate user error.
- C. Determine the network's baseline performance.
- D. Verify you are using the latest diagnostic and troubleshooting equipment.

Answer: B

QUESTION 93:

What is used to adjust different time zones to get an equivalent time for time synchronization?

- A. Time stamps
- B. Standard time
- C. Greenwich Mean Time (GMT)
- D. Daylight saving time offset
- E. Universal Time Coordinated (UTC)

Answer: E

QUESTION 94:

Which platforms are supported by the AFP component of the NFAP service on a NetWare 6.5 server? (Choose 2)

- A. UNIX
- B. Linux
- C. MAC OS 8
- D. MAC OS X
- E. Windows 95
- F. Windows XP
- G. Windows 2000

Answer: C,D

QUESTION 95:

Which are functions provided by the Service Location Protocol (SLP) on a NetWare 6.5 server? (Choose 2)

- A. Detects malformed advertisement packets.
- B. Provides client discovery of network services.
- C. Encapsulates SAP packets for IPX hosts on a network.
- D. Dynamically assigns IP addresses to hosts on the network.
- E. Converts registered, public IP addresses into non-registered, private IP addresses.
- F. Updates the DNS server instantly with address assignments made by your DHCP server.

Answer: B,C

QUESTION 96:

In which container is the w0 object found in your eDirectory tree?

- A. KAP
- B. NMA5
- C. [ROOT]

- D. Security
- E. The same container where the server has been installed.

Answer: A

QUESTION 97:

HOTSPOT

Click on the iManager role you would use to run a report of NetWare licenses in use.

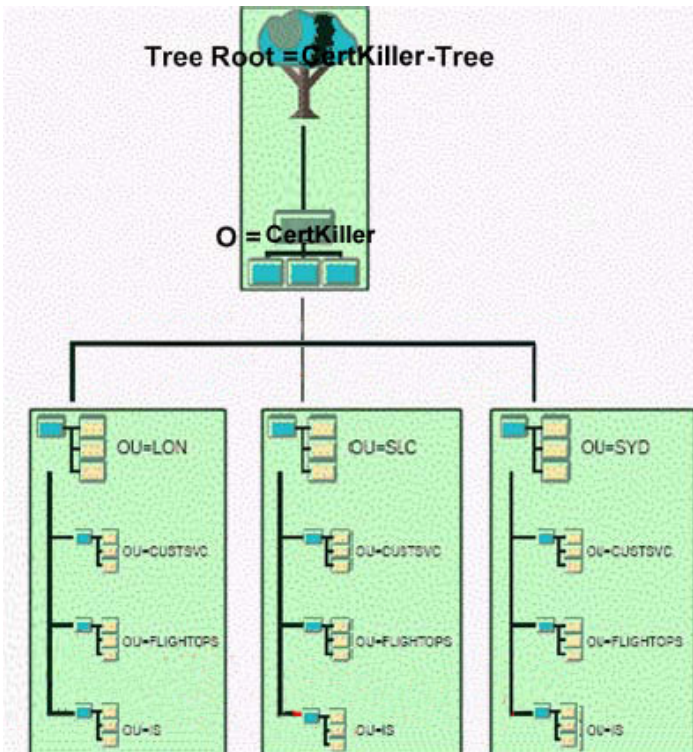


Answer:



QUESTION 98:

Exhibit:



Your eDirectory tree has been partitioned along the boundaries shown in the exhibit. You decide to create a new partition on the IS organizational unit in the SYD container. Immediately after you execute the operation, what state is the SYD partition in?

- A. On
- B. Join
- C. Move
- D. Split
- E. New Replica
- F. Dying Replica

Answer: D

QUESTION 99:

Your network consists of 3 NetWare servers: Certkiller 3, Certkiller 7, and Certkiller 10. Certkiller 3 and Certkiller 7 are NetWare 6.5 servers. Certkiller 10 is a NetWare 6 server. You are experiencing problems with the eDirectory database on server Certkiller 3. You decide to use iMonitor to run a repair in Unattended Mode to fix the problem. You access iMonitor from server Certkiller 7 and run a repair operation in this mode. After the repair is complete, the problems still persist on Certkiller 3. You used Internet Explorer 6 from a Windows XP workstation to access iMonitor. Why did the repair operation fail?

- A. iMonitor isn't compatible with Internet Explorer version 6.
- B. iMonitor won't repair an eDirectory tree that contains mixed server versions.
- C. iMonitor only repairs the eDirectory database on the server where it's being run from.
- D. iMonitor should have been run in Advanced mode with the Report Move Obits option selected.
- E. iMonitor should have been run in Advanced mode with the Repair Network Addresses option selected.

Answer: C

QUESTION 100:

HOTSPOT

Click the iMonitor option you would use to configure a Trace operation.



Answer:



QUESTION 101:

Which are basic components of Public Key Cryptography? (Choose 2)

- A. SSL
- B. WEP
- C. Public key
- D. Shared keys
- E. Certificate authority
- F. Key material publisher

Answer: C,E

QUESTION 102:

Which NLM acts as a relay agent to forward DHCP requests from one network segment to another?

- A. RELAY.NLM
- B. DHCPRLY.NLM
- C. DHCPFWD.NLM
- D. RELAYAGT.NLM
- E. DHCPSTVR.NLM
- F. BOOTPFWD.NLM

Answer: F

QUESTION 103:

Which replica type contains only the partition root object?

- A. Master
- B. Read/write
- C. Read-only
- D. Subordinate reference

Answer: D

QUESTION 104:

Which operating system uses a version of NDS that is incompatible with NetWare 6.5 and, therefore, can't reside in the same tree as a NetWare 6.5 server?

- A. NetWare 3.1
- B. NetWare 3.2
- C. NetWare 4.1
- D. NetWare 4.11
- E. NetWare 4.2
- F. NetWare 5.0
- G. NetWare 5.5
- H. NetWare 6.0

Answer: C

QUESTION 105:

Your server object resides in the IS.DEL.DA container and your user objects reside in the CS.DEL.DA container. Where should you install user licenses?

- A. In any container
- B. In the DA container
- C. In the Security container
- D. In the CS.DEL.DA container
- E. In the IS.DEL.DA or DEL.DA containers
- F. In the CS.DEL.DA or DEL.DA containers

Answer: F

QUESTION 106:

Which tasks must you always perform when implementing DHCP? (Choose 3)

- A. Create a subnet
- B. Create a Zone object
- C. Create a DHCP server
- D. Configure a NAT router
- E. Configure an address range
- F. Create the BOOTP.MDB file
- G. Import a DHCP configuration
- H. Export the DHCP configuration

Answer: A,C,E

QUESTION 107:

How do you perform a Down-Server Upgrade?

- A. Use iMonitor to perform a Top-Down upgrade from a workstation.
- B. Use iManager 2.0 or later to complete the upgrade from a workstation.
- C. Use NetWare Deployment Manager to complete the upgrade from a workstation.
- D. Mount the NetWare 6.5 Operating System CD, then select Novell > Install to begin the upgrade.
- E. Copy the NetWare 6.5 Operating System CD files to another server, then select Novell > Install to begin the upgrade.
- F. Boot the server from the NetWare 6.5 Operating System CD and manually execute INSTALL.BAT with the /UPGRADE switch.

Answer: F

QUESTION 108:

Which SLP Agent maintains only a list of services available on the server where it is running?

- A. DNS Agent
- B. User Agent
- C. LDAP Agent
- D. Service Agent
- E. Directory Agent
- F. Application Agent

Answer: D

QUESTION 109:

CORRECT TEXT

In NetWare 6.5 you can configure all services running on the server to use a common password called _____.

Answer:

Answer: UNIVERSAL PASSWORD

Explanation:

See <http://www.novell.com/cool solutions/feature/15778.html>

QUESTION 110:

What does the Allow Forward References option in the eDirectory Import Convert Export Wizard do?

- A. Configures the import process to use LDAP version 2.
- B. Stores passwords specified in the LDIF file as simple passwords in the objects created.
- C. Configures the import process so that entries in the LDIF file are processed in the order they appear.
- D. Creates a placeholder in the tree when a record to add an entry comes before the record to add the entry's parent object.
- E. Causes the source handler to parse the import file, but does not send any records to the import engine or the destination handler.

Answer: D

QUESTION 111:

What are advantages of using configured lists for time synchronization? (Choose 2)

- A. Reduces network SLP and SAP traffic
- B. Easier to implement and manage than using SLP and SAP
- C. Allows you to specify which time server a server should contact
- D. Allows servers to be synchronized in a mixed IP/IPX environment
- E. Allows single reference and primary time servers to reside in the same tree

Answer: A,C

QUESTION 112:

Which is the main component of the Novell Client 4.9?

- A. ODI
- B. NDIS
- C. Lsl.com
- D. Nwfs.sys
- E. Nwgina.dll
- F. Ipxodi.nlm

Answer: D

QUESTION 113:

Which activities are appropriate to help you be better prepared for recurring network problems? (Choose 3)

- A. Maintain an updated network map.
- B. Remove unnecessary components.
- C. Perform regular network health checks.
- D. Keep documentation available for reference.

E. Open an electronic incident with Novell support.

Answer: A,C,D

QUESTION 114:

Which DHCP message is first sent by a workstation when it needs to obtain an IP address from a DHCP server?

- A. DHCPACK
- B. DHCPOFFER
- C. DHCPREQUEST
- D. DHCPDISCOVER

Answer: D

QUESTION 115:

Which SLP URL represents a NetWare server's file system?

- A. ndap.novell
- B. smdr.novell
- C. portal.novell
- D. bindery.novell
- E. nls.meter.novell

Answer: D

QUESTION 116:

Before starting a NetWare 6.5 upgrade, the user performing the upgrade should verify they have what rights? (Choose 3)

- A. Supervisor rights to the Admin object
- B. Browse rights to the Security container
- C. Supervisor rights to the server hosting the CA
- D. Supervisor rights to the Root of the eDirectory tree
- E. Supervisor rights at the container where the server will be installed
- F. Read and Write rights to all servers holding a replica of the partition where the new server will be installed

Answer: B,D,E

QUESTION 117:

You need to manually start the Apache Manager service on your NetWare 6.5 server.

Which command is used from the server console to do this?

- A. WEBMAN
- B. NVXADUP
- C. APMANUP
- D. ADMINWEB
- E. WEBMANUP
- F. AP2MANUP
- G. AP2WEBMAN
- H. APACHEADM
- I. AP2WEBMANUP

Answer: G

QUESTION 118:

HOTSPOT

Click the iManager option you would use to configure DDNS.

Roles and Tasks

- Archive / Version Management
- Cluster Administration
- DHCP**
 - DNS/DHCP Scope Settings
 - DHCP Server Management
 - Subnet Pool Management
 - Subnet Management
 - Global DHCP Configuration
 - Address Range Management
 - IP Address Management
- DirXML Management
- DirXML Planning
- DNS**
 - DNS/DHCP Scope Settings
 - DNS Server Management
 - Zone Management
 - Resource Record Management
- Dynamic Groups
- eDirectory Administration
- eDirectory Maintenance
- File Access (NetStorage)

View/Modify Subnet

Subnet Name: Available Addresses.DA

Subnet Address: 192.168.1.0

Subnet Mask: 255.255.255.0

Subnet Type : [dropdown]

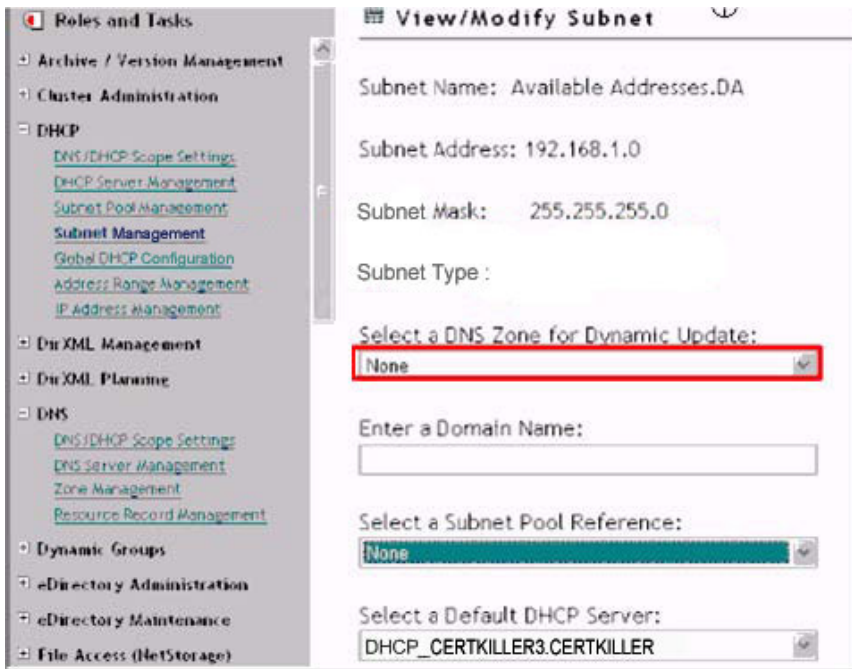
Select a DNS Zone for Dynamic Update: [None]

Enter a Domain Name: [text box]

Select a Subnet Pool Reference: [None]

Select a Default DHCP Server: DHCP_CERTKILLER3.CERTKILLER

Answer:

**QUESTION 119:**

Which file can you use to create a customized Remote Manager welcome page?

- A. Sys:\Etc\Nwnrm.htm
- B. Sys:\Login\Nrmcfg.htm
- C. Sys:\Login\Prtlldisc.htm
- D. Sys:\Etc\Welcome.htm
- E. Sys:\System\NrmWel.htm
- F. Sys:\System\Welcometxt.htm

Answer: C

QUESTION 120:

Which are characteristics of a read/write replica? (Choose 2)

- A. It can control object changes.
- B. It can control partition boundary changes.
- C. It cannot be created by the network administrator.
- D. It can be used on a server where bindery services is required.

Answer: A,D

QUESTION 121:

What complimentary resources are available online through the Novell web pages?
(Choose 3)

- A. Product documentation
- B. Product support forums
- C. Incident-based electronic support
- D. Novell Software Evaluation Library
- E. Limited access to Abend Analysis System

Answer: A,B,E

QUESTION 122:

You're mapping a drive to a NetWare 6.5 server. What type of eDirectory connection must be established?

- A. Bindery
- B. Authenticated
- C. Authenticated and licensed
- D. Connected but not logged in

Answer: C

QUESTION 123:

Which Role-Based Services object is a container object in the eDirectory tree that holds all RBS Role and Module objects?

- A. rbsRole
- B. rbsBook
- C. rbsScope
- D. rbsModule
- E. rbsCollection

Answer: E

QUESTION 124:

You want to upgrade a NetWare 6 server that is currently running in your test lab to NetWare 6.5. You also want to deploy it as a production server in a high-utilization environment. The server hardware uses dual Pentium IV 2.5 GHz CPUs, 512 MB RAM, a 300 GB RAID 5 drive array, and a USB mouse. Does this server hardware meet the recommended requirements for a production server?

- A. No, NetWare 6.5 doesn't support USB mice.
- B. No, the server should have at least 1 GB of RAM.

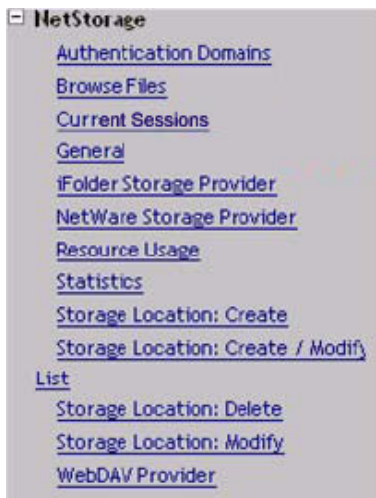
- C. No, NetWare 6.5 isn't compatible with RAID arrays.
- D. Yes, the server meets all recommended requirements.
- E. No, NetWare 6.5 isn't compatible with Pentium IV processors.
- F. No, the server should have at least 8 CPUs to run in a production environment.
- G. No, you should use 3.0 GHz (or faster) CPUs in a NetWare 6.5 production server.

Answer: B

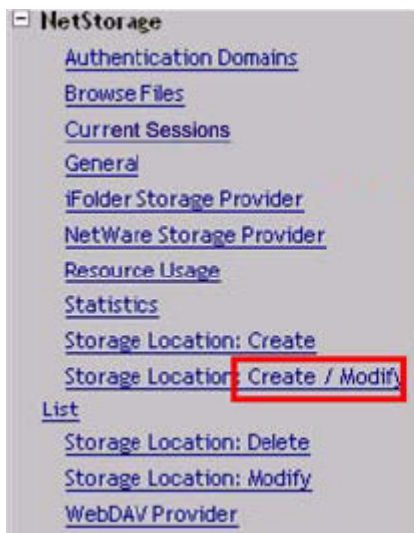
QUESTION 125:

HOTSPOT

You've created a Storage Location object that points to the Data:\Shared directory on your NetWare 6.5 server. Now you need to specify which users in the eDirectory tree are allowed to access the Storage Location. Click the iManager task you would use to do this.



Answer:



QUESTION 126:

CORRECT TEXT

In Public Key Cryptography, the _____ key is used to decrypt an encrypted transmission.

Answer: PRIVATE

QUESTION 127:

Which time server types participate in voting for the correct time? (Choose 2)

- A. Master
- B. Primary
- C. Reference
- D. Secondary
- E. Single reference
- F. Secondary reference

Answer: B,C

QUESTION 128:

Which tool do you use to configure NAT?

- A. iMonitor
- B. ConsoleOne
- C. NATCFG.NLM
- D. INETCFG.NLM
- E. Web Manager
- F. Novell iManager

Answer: D

QUESTION 129:

HOTSPOT

Click the iManager task you would use to restore a deleted NSS volume.



Answer:



QUESTION 130:

What happens if you select the View and Update NDS option in Deployment Manager?

- A. Upgrades older versions of NDS in the tree to eDirectory 8.7.3.
- B. Runs SDIDIAG.NLM to check your tree's SDI key for consistency.
- C. Places a Read/Write replica of the root partition on all existing servers in the tree.
- D. Copies a new version of DS.NLM and SGUID.NLM to NetWare 4 servers in the tree.

- E. Locates servers that are running incompatible versions of Directory Services and removes them from the tree.
- F. Patches existing servers in the tree to a revision level compatible with the version of eDirectory used by NetWare 6.5.

Answer: F

QUESTION 131:

What's the minimum size the DOS partition must be on a server that is to be upgraded to NetWare 6.5?

- A. 50 MB
- B. 100 MB
- C. 200 MB
- D. 300 MB
- E. 400 MB
- F. 500 MB

Answer: F

QUESTION 132:

Your eDirectory tree currently has a NetWare 4.1 server residing in it. You plan to upgrade a NetWare 5.1 server in your tree to NetWare 6.5. What must you do to accomplish this?

- A. Remove the 4.1 server from the tree.
- B. Use the View and Update NDS option in Deployment Manager.
- C. Use the Extend the Core Schema option in Deployment Manager.
- D. Use the Prepare for New eDirectory option in Deployment Manager.
- E. Use the Generate GUIDs on NetWare 4 Servers option in Deployment Manager.
- F. Nothing. The NetWare 6.5 server can co-exist with the NetWare 4.1 server as long as you configure both to use the IPX protocol.

Answer: A

QUESTION 133:

Where is DNS zone data stored in Novell's DNS implementation?

- A. In eDirectory
- B. In the local MySQL database
- C. In the DFS Management Context
- D. In a distributed VLDB database
- E. Locally in the primary name server's file system

- F. Locally in each secondary name server's file system
- G. Locally in both primary and secondary name servers' file system

Answer: A

QUESTION 134:

How do you perform an In-Place Upgrade?

- A. Use iMonitor to complete the upgrade from a workstation.
- B. Use iManager 2.0 or later to complete the upgrade from a workstation.
- C. Use NetWare Deployment Manager to complete the upgrade from a workstation.
- D. Boot the server from the NetWare 6.5 Operating System CD and manually execute INSTALL.BAT.
- E. Mount the NetWare 6.5 Opening system CD; then select Novell> Install to begin the upgrade.
- F. Boot the server from the NetWare 6.5 Operating System CD and manually execute INSTALL.BAT with the /UPGRADE switch.

Answer: E

QUESTION 135:

CORRECT TEXT

Your NetWare 6.5 server's IP address is 10.0.0.3. To access Remote Manager on your server, what URL would you use?

Answer: HTTP://10.0.0.3:8008

Answer: HTTPS://10.0.0.3:8009

QUESTION 136:

Which replica or replicas contain a complete copy of all object information of a partition?

- A. Master
- B. Master and read-only
- C. Master and read/write
- D. Master, read/write, and read-only
- E. Master, read/write, read-only, and subordinate reference

Answer: D

QUESTION 137:

Which statements are true about eDirectory partitions? (Choose 2)

- A. Partitions can overlap each other.
- B. A container object can reside in 2 partitions.
- C. A partition provides fault tolerance for the file system.
- D. A partition contains only eDirectory objects and related data.
- E. Partitions are logical divisions of eDirectory that enable the database to be divided among several servers.

Answer: D,E

QUESTION 138:

You are documenting your network to help save time with future troubleshooting. What information is beneficial to document? (Choose 3)

- A. A diagram of the network cabling
- B. A list of current user and file system rights
- C. The configuration and type of each workstation
- D. The performance statistics during poor network operation
- E. A chronological log of software upgrades and hardware changes

Answer: A,C,E

QUESTION 139:

Which SLP URL represents a NetWare server's file system?

- A. ndap.novell
- B. smdr.novell
- C. portal.novell
- D. bindery.novell
- E. nls.meter.novell

Answer: D

QUESTION 140:

Your server object resides in the IS.DEL.DA container and your user objects reside in the CS.DEL.DA container. In which container should the server license be installed?

- A. In any container
- B. In the DA container
- C. In the Security container
- D. In the IS.DEL.DA container
- E. In the CS.DEL.DA container
- F. In the IS.DEL.DA or DEL.DA containers
- G. In the CS.DEL.DA or DEL.DA containers

Answer: D

QUESTION 141:

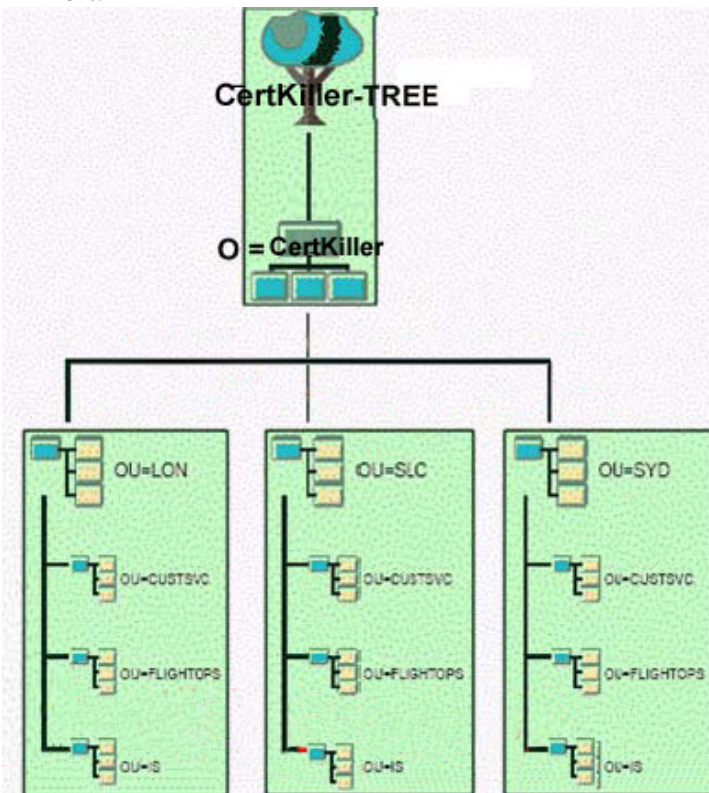
In which container are the SSL CertificateDNS, SSL CertificateIP, and SAS Service objects found in your eDirectory tree?

- A. KAP
- B. NMA5
- C. [ROOT]
- D. Security
- E. The same container where the server has been installed.

Answer: E

QUESTION 142:

Exhibit:



Your eDirectory tree has been partitioned along the boundaries shown in the exhibit. You decide to merge the LON partition with the DigitalAir partition. Immediately after you execute the operation, what state are the LON and DigitalAir partitions in?

- A. On

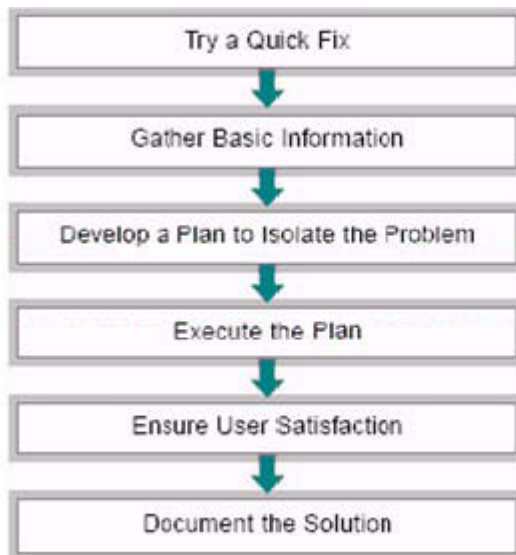
- B. Join
- C. Move
- D. Split
- E. New Replica
- F. Dying Replica

Answer: B

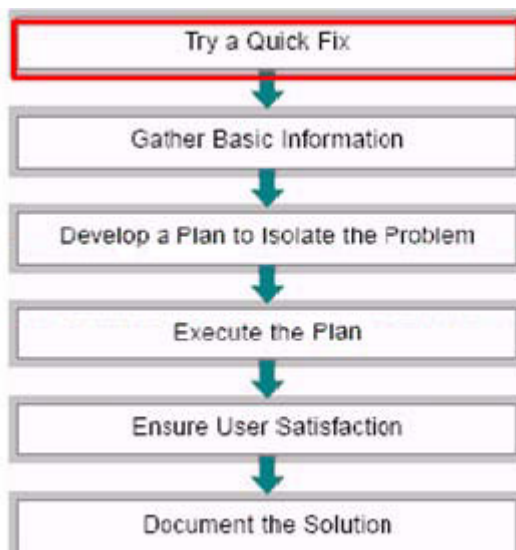
QUESTION 143:

HOTSPOT

Click on the step in the 6-step troubleshooting model where you check for error conditions such as unplugged power cords or network cabling.



Answer:



QUESTION 144:

You want to upgrade a NetWare 6 server that is currently running in your test lab to NetWare 6.5. You also want to deploy it as a production server in a high-utilization environment. The server hardware uses dual Pentium IV 2.5 GHz CPUs, 512 MB RAM, a 300 GB RAID 5 drive array, and a USB mouse. Does this server hardware meet the recommended requirements for a production server?

- A. No, NetWare 6.5 doesn't support USB mice.
- B. No, the server should have at least 1 GB of RAM.
- C. No, NetWare 6.5 isn't compatible with RAID arrays.
- D. Yes, the server meets all recommended requirements.
- E. No, NetWare 6.5 isn't compatible with Pentium IV processors.
- F. No, the server should have at least 8 CPUs to run in a production environment.
- G. No, you should use 3.0 GHz (or faster) CPUs in a NetWare 6.5 production server.

Answer: B

QUESTION 145:

When you are configuring DHCP, which object lets you assign multiple subnet objects to service DHCP requests?

- A. Subnet Pool object
- B. DHCP Server object
- C. DNS-DHCP Locator object
- D. Subnet Address Range object

Answer: A

QUESTION 146:

Which tasks do you perform to set up the ACU to update the Novell Client software across the network? (Choose 2)

- A. Add a command to launch ACU.EXE to the server's login script.
- B. Run NCIMAN.EXE to create the ACU.BAT file for each workstation.
- C. Place the upgrade files in a directory that all users have access to.
- D. Configure the ACU.INI file to specify how you want ACU.EXE to execute.
- E. Copy the client upgrade files to each user's workstation from the Novell Client CD.

Answer: C,D

QUESTION 147:

You have users in the ACCT.SLC.DA container and in the MKT.LON.DA container. The Server object resides in the IS.SLC.DA container. Where should you install user licenses so users in both containers can use them?

- A. In the DA container
- B. In the SLC.DA container
- C. In the LON.DA container
- D. In the IS.SLC.DA container
- E. In the ACCT.SLC.DA container or the IS.SLC.DA container

Answer: A

QUESTION 148:

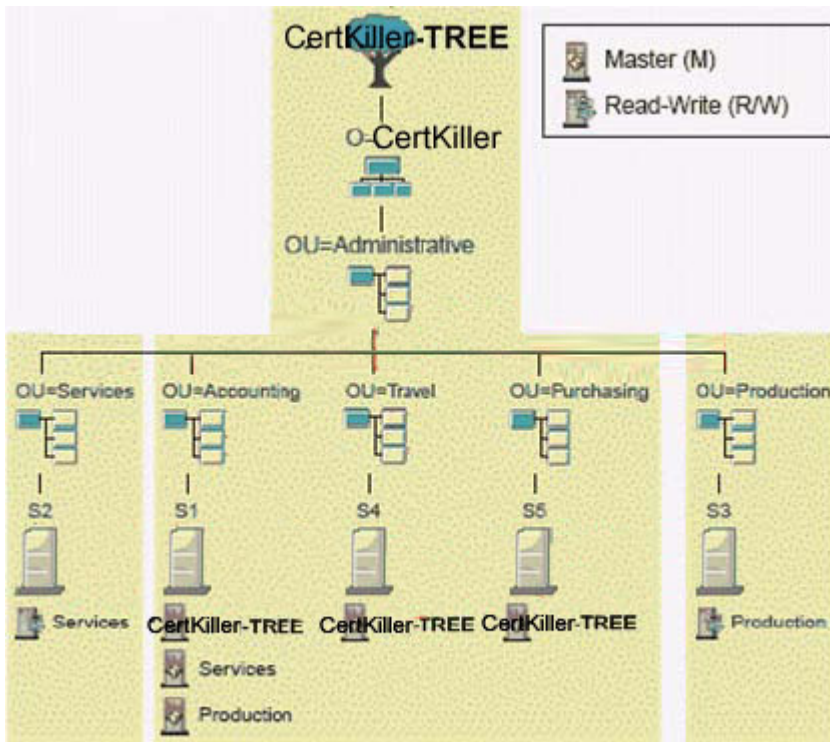
What is the relationship between eDirectory and the Apache 2 Web server when Apache Manager is configured using the Multiple Server Administration model? (Choose 2)

- A. It is used as a database for web-based applications.
- B. It is used as a database for storing Apache configuration parameters.
- C. It is used to perform reverse lookups on requests coming from outside your domain.
- D. It allows configuration parameters to be shared among multiple Apache Web Servers.
- E. It is used as a repository for Open Source applets, allowing them to be shared concurrently by multiple Apache Web Servers.
- F. With partitioning and replication, it is used to provide failover functionality by distributing multiple instances of the same web server among several NetWare 6.5 servers.

Answer: B,D

QUESTION 149:

Exhibit:



Given the partition and replication table shown in the exhibit, on which servers would subordinate reference replicas for the Services partition be automatically placed?

- A. S2
- B. S3
- C. S1 and S2
- D. S1 and S4
- E. S4 and S5
- F. S3 and S5
- G. S2, S5, and S4
- H. S3, S4, and S5

Answer: E

QUESTION 150:

You are a regional network administrator remotely upgrading a NetWare 5.1 server to NetWare 6.5. The NetWare 5.1 server has 512 MB of RAM, a 180 GB RAID 5 disk array with a 1 GB DOS partition, and Support Pack 6 installed. Your user object has the Supervisor right to the container where the server resides and the Browse right to the root of the tree. Will the upgrade be successful?

- A. No, the DOS partition is too small.
- B. No, the server doesn't have enough RAM.
- C. Yes, the system meets all prerequisite requirements.

- D. No, you must have the Supervisor right to the root of the tree.
- E. No, you must first install Support Pack 7 on the NetWare 5.1 server.
- F. No, you can't remotely upgrade a server that uses a RAID disk array.
- G. No, you can't perform a Remote Upgrade on a NetWare 5.1 server. You must use an In-Place Upgrade.

Answer: D

QUESTION 151:

When using Novell Certificate Server, where is the public key component of public key cryptography created?

- A. On the Certificate Authority server
- B. On the workstation or server owning the key
- C. On the eDirectory server with the master of the tree root
- D. On the workstation or server preparing an encrypted message

Answer: A

QUESTION 152:

Which are functions provided by the Service Location Protocol (SLP) on a NetWare 6.5 server? (Choose 2)

- A. Detects malformed advertisement packets.
- B. Provides client discovery of network services.
- C. Encapsulates SAP packets for IPX hosts on a network.
- D. Dynamically assigns IP addresses to hosts on the network.
- E. Converts registered, public IP addresses into non-registered, private IP addresses.
- F. Updates the DNS server instantly with address assignments made by your DHCP server.

Answer: B,C

QUESTION 153:

Which would be considered a time provider group for a tree that has 15 NetWare 6 servers?

- A. 2 reference time servers and 13 secondary time servers
- B. 1 single reference time server and 14 secondary time servers
- C. 2 single reference time servers and 13 secondary time servers
- D. 1 reference time server, 1 primary time server, and 13 secondary time servers
- E. 1 reference time server, 2 primary time servers, and 12 secondary time servers
- F. 1 single reference time server, 1 primary time server, and 13 secondary time servers

Answer: E

QUESTION 154:

In your tree, you deployed Universal Password. Your users now can't log in from their Windows 98 Second Edition workstations using the Novell Client 3.2. What is the resolution to the problem? (Choose 3)

- A. Install Client NCI 2.6 or later.
- B. Install NMAAS Client 2.2 or later.
- C. Deploy the Novell Client 3.4 on the workstations.
- D. Deploy the Novell Client 4.83 on the workstations.
- E. Configure each user object with a Simple Password.
- F. Upgrade the workstations to Windows 2000 Professional.
- G. Upgrade the workstations to Windows XP Home or Professional.

Answer: A,B,C

QUESTION 155:

Which statements are true regarding eDirectory replicas? (Choose 3)

- A. Replicas are required on single or primary reference servers.
- B. A replica is required on all servers that exist in the eDirectory tree.
- C. Replicas contain eDirectory data for objects within the boundaries of a partition.
- D. Information in a replica is contained in a file stored in a hidden directory on volume SYS.
- E. There are 5 types of replicas: master, read/write, read-only, filtered, and subordinate reference.

Answer: C,D,E

QUESTION 156:

Which are characteristics of a subordinate reference replica? (Choose 2)

- A. It supports authentication.
- B. It supports viewing of objects.
- C. It maintains a list of other replicas.
- D. It only contains the partition root object.
- E. It can be changed into a read/write replica.

Answer: C,D

QUESTION 157:

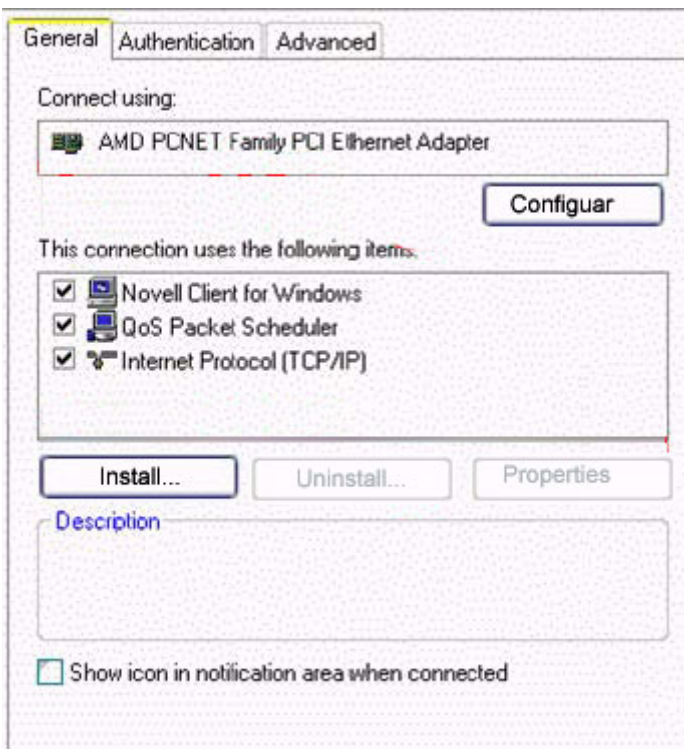
Which repair process in iMonitor produces a copy of the local eDirectory database on the server which can be used for backup or troubleshooting?

- A. Repair Replica
- B. Repair Local DIB
- C. Create DIB Archive
- D. Repair Single Object
- E. Run in Unattended Mode
- F. Disable Reference Checking

Answer: C

QUESTION 158:

Exhibit



You are trying to map a network drive from a Windows XP Professional workstation to a CIFS share on your NetWare 6.5 server, but are unable to access the share. Given the Local Area Connection Properties configuration shown, why can't you access the share? (Choose 2)

- A. The IPX/SPX protocol is missing
- B. The Client for Microsoft Networks is missing

- C. The Service Advertisement Protocol is missing
- D. The Novell Client for Windows must be uninstalled
- E. The QoS Packet Scheduler service must be uninstalled
- F. The File and Printer Sharing for Microsoft Networks service is missing
- G. The Novell Client for Windows must be configured to support CIFS shares.

Answer: B,F

QUESTION 159:

Which are components of the NetWare 6.5 Web and Application Services? (Choose 3)


- A. PHP
- B. Rsync
- C. iSCSI
- D. Tomcat
- E. eGuide
- F. IIS Web Server
- G. Novel NetStorage
- H. Novell FTP Server
- I. Apache Web Server 2
- J. Enterprise Web Server

Answer: A,D,I

QUESTION 160:

HOTSPOT

Click the parameter you would use to configure the DNS zone to receive zone updates from a master DNS server.

 View/Modify Zone

Selected DNS Zone da.com

Select the Zone Type:

☒ Primary

☐ Secondary

Enter the Zone Master IP Address:

Available DNS Server(s):

Add

Remove

Add All

Remove All


Selected Authoritative DNS Server(s):

DNS_CERTKILLER1.CERTKILLER

Specify Designated Primary DNS Server:

DNS_CERTKILLER1.CERTKILLER

Answer:

 View/Modify Zone

Selected DNS Zone da.com

Select the Zone Type:

☒ Primary

☐ Secondary

Enter the Zone Master IP Address:

Available DNS Server(s):

Add

Remove

Add All

Remove All

Selected Authoritative DNS Server(s):

DNS_CERTKILLER1.CERTKILLER

Specify Designated Primary DNS Server:

DNS_CERTKILLER1.CERTKILLER

QUESTION 161:

In the most recent version of NSS, which tools can be used to create NSS logical volumes? (Choose 3.)

- A. NSSMU
- B. MONITOR
- C. INSTALL
- D. NWCONFIG
- E. iManager
- F. iMonitor
- G. ConsoleOne
- H. Remote Manager

Answer: A,E,H

QUESTION 162:

NetWare 6.5 can automatically self-tune which resources? (Choose 2)

- A. SLP
- B. NSS buffers
- C. Error handling
- D. Service processes
- E. Licensing services
- F. Directory cache buffers

Answer: D,F

QUESTION 163:

You need to fill out a replica table. Which tools can you use to get replica ring information? (Choose 3)

- A. iMonitor
- B. MONITOR
- C. DSREPAIR
- D. NWCONFIG
- E. ConsoleOne
- F. NetWare Administrator

Answer: A,C,E

QUESTION 164:

Which time server type adjusts its clock 100% per polling interval?

- A. Master
- B. Primary
- C. Secondary
- D. Reference
- E. Single reference
- F. Secondary reference

Answer: C

QUESTION 165:

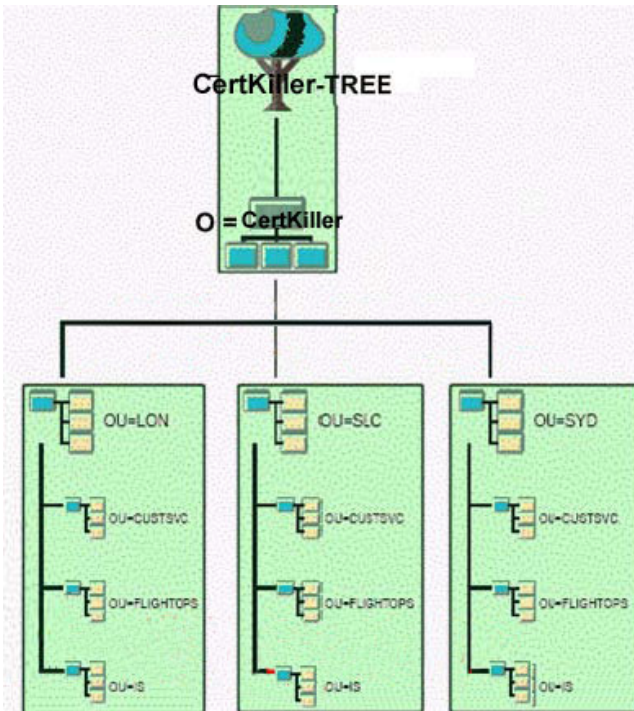
What happens to a NetWare 5.1 server's Enterprise Web Server when you upgrade the server to NetWare 6.5?

- A. It is reconfigured to use IP ports 81 and 444.
- B. It is reconfigured to use a secondary IP address.
- C. It is used to provide NetWare 6.5 web services instead of Apache Web Server.
- D. It's removed. All associated configuration parameters and web server data are lost.
- E. It is removed and its configuration parameters are migrated to the Apache Web Server's configuration file.

Answer: E

QUESTION 166:

Exhibit:



Given the eDirectory tree shown in the exhibit, which uses the correct LDAP syntax to reference the IS.SLC.DigitalAir container? (Choose 2.)

- A. is.slc.digitalair
- B. is,slc,digitalair
- C. ou=is,ou=slc,o=digitalair
- D. ou=is,ou=slc.o=digitalair
- E. ,ou=is,ou=slc,o=digitalair
- F. ou=IS,ou=SLC,o=DigitalAir
- G. .ou=IS.ou=SLC.o=DigitalAir
- H. .ou=IS,ou=SLC,o=DigitalAir

Answer: C,F

QUESTION 167:

What is the default life span for public key certificates?

- A. 24 hours
- B. 1 week
- C. 2 months
- D. 1 year
- E. 2 years
- F. 5 years
- G. Public key certificates never expire.

Answer: E

QUESTION 168:

You have just run the REBUILD command on an NSS pool named DATA_POOL.
Which file does REBUILD copy errors and transactions to, and where is that file located?

- A. VOLUME.NSS, located at the root of DATA
- B. DATA_POOL.NSS, located at the root of SYS
- C. DATA_POOL.RLF, located at the root of SYS
- D. DATA_POOL.RLF, located at the root of DATA
- E. DATA_POOL.NSS, located at the root of DATA

Answer: C

QUESTION 169:

HOTSPOT

Click on the iMonitor option you would use to run a repair on your eDirectory tree.



Answer:



QUESTION 170:

Given that your workstation's CD drive is assigned drive letter E, which is the correct file name and location for the NetWare 6.5 Deployment Manager executable?

- A. E:\Nwdeploy.exe
- B. E:\Nwdeploy65.exe
- C. E:\Tools\Nwdeploy.exe
- D. E:\Install\Nwdeploy.exe
- E. E:\Products\Nwdeploy.exe
- F. E:\Install\Nwdeploy.exe

Answer: A

QUESTION 171:

Which type of login script is the most efficient method for supplying access to network resources?

- A. Tree
- B. User
- C. Root
- D. Profile
- E. Default
- F. Container

Answer: F

QUESTION 172:

Which modules implement TCP/IP in NetWare 6.5? (Choose 3)

- A. IP.NLM
- B. TCP.NLM
- C. TCPIP.NLM
- D. SLPSAP.NLM
- E. IPXODI.NLM
- F. TCPSRV.NLM
- G. BSDSOCK.NLM
- H. TCPIPODI.NLM

Answer: B,C,G

QUESTION 173:

You're installing a new NetWare 6.5 server. You want to use your server to host web-enabled database applications. Which patterned deployment option should you select?

- A. Management Server
- B. NetWare AMP Server

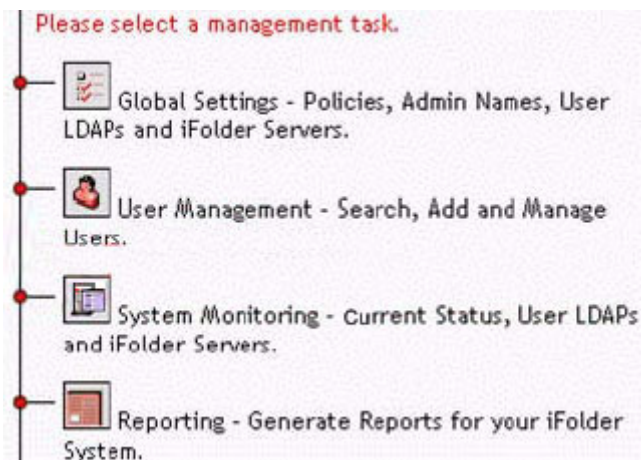
- C. Apache/Tomcat Server
- D. Virtual Office Server
- E. Basic NetWare File Server
- F. NetWare Web Search Server

Answer: B

QUESTION 174:

HOTSPOT

Click the Server Management Console management task you would use to remove an iFolder account.



Answer:



QUESTION 175:

CORRECT TEXT

In Public Key Cryptography, the _____ key is kept secure by the key owner

Answer: PRIVATE

QUESTION 176:

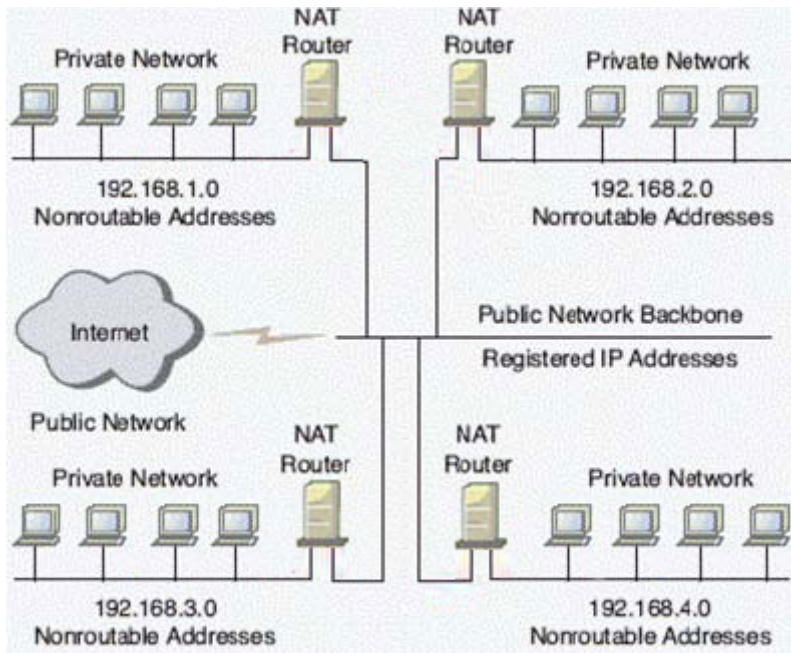
Which statements are true regarding secondary time server types? (Choose 2)

- A. They do not participate in voting for time.
- B. They must get their time from a primary server.
- C. They adjust their time 50% to match the established network time.
- D. By default, they use configured lists to direct them to a server to get time.
- E. They can get their time from single reference, reference, primary, and secondary time servers.

Answer: A,E

QUESTION 177:

Exhibit:



How many registered IP addresses (minimum) would be required to configure the NAT-routed network shown in the exhibit?

- A. 1
- B. 2
- C. 3
- D. 4
- E. 5

- F. 6
- G. 7
- H. 8

Answer: D

QUESTION 178:

Which eDirectory upgrade strategy dictates that you first upgrade non-critical servers that reside at lower levels in the tree?

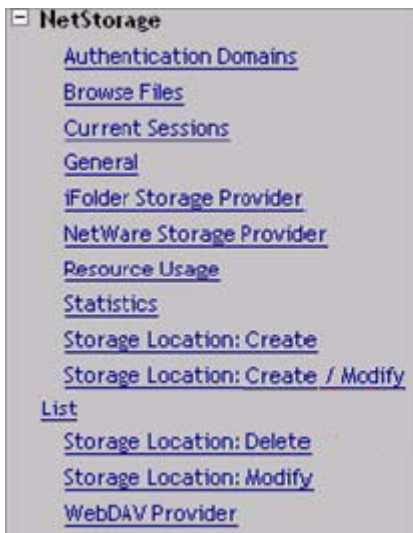
- A. Lateral Upgrade
- B. Roll-Up Upgrade
- C. Indirect Upgrade
- D. Remote Upgrade
- E. Top-Down Upgrade
- F. Bottom-Up Upgrade

Answer: F

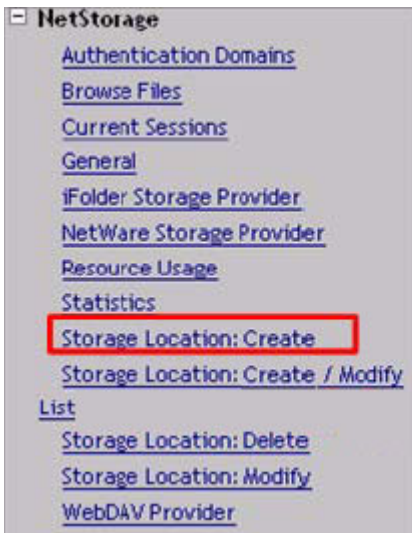
QUESTION 179:

HOTSPOT

You want to give your NetStorage users access to the Data:\Shared directory on your NetWare 6.5 server. Click the iManager task you would use to do this.



Answer:



QUESTION 180:

When attempting an In-Place Upgrade on a NetWare 5.1 server with Support Pack 3, the upgrade process fails. What is the cause?

- A. NetWare 5.1 servers can't be upgraded; you must use the Migration Wizard.
- B. You must apply Support Pack 6 or later to upgrade a NetWare 5.1 server to NetWare 6.5.
- C. You must apply Support Pack 4 or later to upgrade a NetWare 5.1 server to NetWare 6.5
- D. You can't use an In-Place Upgrade on a NetWare 5.1 Server; you must perform a Remote Upgrade.
- E. You can't use an In-Place Upgrade on a NetWare 5.1 server; you must perform a Down-Server Upgrade.

Answer: B

QUESTION 181:

Which server parameter must be manually specified within the Novell Client configuration?

- A. DNS Server
- B. DHCP Server
- C. BootP Server
- D. Primary Server
- E. Preferred Server

Answer: E

QUESTION 182:

By default, which statement is true regarding the UAL licensing model in NetWare 6.5?

- A. NDPS printers use a user or connection license.
- B. The license is released from the user immediately when the user logs out.
- C. The search for the license starts at the user's context and goes up the tree.
- D. A different license is required for each NetWare 6.5 server that a user authenticates to.

Answer: C

QUESTION 183:

Which platforms are supported by the NFS component of Native File Access Protocols service on a NetWare 6.5 server? (Choose 2)

- A. UNIX
- B. Linux
- C. MAC OS 8
- D. MAC OS X
- E. Windows 95
- F. Windows XP
- G. Windows 2000

Answer: A,B

QUESTION 184:

A secondary server is not synchronized to a single reference time server. During the next polling process, what percent of the time difference does the secondary time server adjust?

- A. 1%
- B. 16%
- C. 25%
- D. 50%
- E. 75%
- F. 100%
- G. A secondary server doesn't adjust its clock

Answer: F

QUESTION 185:

What are advantages of using configured lists for time synchronization? (Choose 2)

- A. Reduces network SLP and SAP traffic
- B. Easier to implement and manage than using SLP and SAP
- C. Allows you to specify which time server a server should contact
- D. Allows servers to be synchronized in a mixed IP/IPX environment
- E. Allows single reference and primary time servers to reside in the same tree

Answer: A,C

QUESTION 186:

Which part of your eDirectory tree should contain the fewest partitions?

- A. The top
- B. The bottom
- C. Directly above the first level of organizational unit objects.
- D. Directly beneath the first level of organizational unit objects.

Answer: A

QUESTION 187:

When should an SLP DA be configured? (Choose 2)

- A. When SLPv2 is being used
- B. When a DEFAULT scope exists
- C. When SLP is running on a large network
- D. When backward compatibility is needed with SLPv1
- E. When environments need to keep SLP network traffic to a minimum

Answer: C,E

QUESTION 188:

Which activities are appropriate to help you be better prepared for recurring network problems? (Choose 3)

- A. Maintain an updated network map.
- B. Remove unnecessary components.
- C. Perform regular network health checks.
- D. Keep documentation available for reference.
- E. Open an electronic incident with Novell support.

Answer: A,C,D

QUESTION 189:

You've just completed a Remote Upgrade to NetWare 6.5 on a NetWare 5.1 server. The server you upgraded resides in a multi-server tree. Which DSREPAIR operations should you run on the upgraded server? (Choose 3)

- A. Import Remote Schema
- B. Time Synchronization
- C. Unattended Full Repair
- D. Delete Unknown Leaf Objects
- E. Post NetWare 5 Schema Update
- F. Report Synchronization Status
- G. Repair Time Stamps and Declare a New Epoch
- H. Designate This Server as the New Master Replica

Answer: B,C,F

QUESTION 190:

What complimentary resources are available online through the Novell web pages? (Choose 3)

- A. Product documentation
- B. Product support forums
- C. Incident-based electronic support
- D. Novell Software Evaluation Library
- E. Limited access to Abend Analysis System

Answer: A,B,E

QUESTION 191:

Which NLM acts as a relay agent to forward DHCP requests from one network segment to another?

- A. RELAY.NLM
- B. DHCPRLY.NLM
- C. DHCPFWD.NLM
- D. RELAYAGT.NLM
- E. DHCPSTVR.NLM
- F. BOOTPFWD.NLM

Answer: F

QUESTION 192:

NAT provides protection at the _____ layer of the OSI model.

- A. Network
- B. Physical
- C. Data Link
- D. Transport

Answer: A