



Exam : 050-688

Title : Upgrading to NetWare 6.5

Ver : 11-12-08

---

**QUESTION 1:**

You're installing the Branch Office Application software on older server hardware that doesn't support bootable CD drives.  
How can you install the software?

- A. You can't install the Application software without a bootable CD
- B. Create a bootable diskette and install the appropriate DOS CD drivers on it.
- C. Create a bootable diskette and install the IPCONN drivers from the Novell Client CD on it; then install across the wire from another server.
- D. Mount the installation CD as a volume on another NetWare server, then configure a bootable diskette with the IP Server Connection Utility from the Novell Client CD and install over the wire.

Answer: A

---

**QUESTION 2:**

Your application is connected to your Central Office Server using a T1 link.  
Under optimal conditions, how fast can Rsync transfer data with this configuration?

- A. 1.5 MB/second
- B. 1.5 GB/second
- C. 1.5 KB/second
- D. 3.8 MB/second
- E. 3.8 GB/seconds

Answer: A

---

**QUESTION 3:**

You're installing a new NetWare 6.5 server. The hardware you are using has dual PIII 1.113 GHz CPUs, 384 MB of RAM, and a 40 GB SCSI SCA hard disk drive.  
Will the installation be successful?

- A. No, NetWare 6.5 requires 512 MB or more RAM.
- B. Yes, the hardware meets all prerequisite requirements.
- C. No, NetWare 6.5 doesn't support multiprocessor systems.
- D. No, NetWare 6.5 doesn't support SCSI SCA hard disk drivers
- E. No, NetWare 6.5 requires an 80 GB or larger hard disk drive.

Answer: A

---

**QUESTION 4:**

You've installed one Application and create a Setting diskette. You want to use this diskette to install subsequent Appliances.

What parameters do you need to edit on the diskette before you can do this?

(Choose three.)

- A. DNS name
- B. IP address
- C. Volume names
- D. Appliance name
- E. LDAP server name
- F. Central Office Server name

Answer: A B D

---

### **QUESTION 5:**

During installation you configure an Application with the IP address of 192.168.1.1.

What URL is used to access the Branch Office Web Administrator?

- A. http://192.168.1.1:636
- B. https://192.168.1.1:631
- C. http://192.168.1.1:2222
- D. https://192.168.1.1:2222
- E. http://192.168.1.1/WebAdmin
- F. https://192.168.1.1/WebAdmin

Answer: D

---

### **QUESTION 6:**

You're installing a new NetWare 6.5 server into an existing tree. The tree already contains two NetWare 4.2 servers with Support Pack 5 applied, three NetWare 5.0 servers with Support Pack 4 applied, and two NetWare 5.1 servers with Support Pack 3 applied.

Will the installation be successful?

- A. Yes, the existing network meets prerequisite requirements.
- B. No, the existing NetWare 5.0 servers must have Support Pack 6 or later applied.
- C. No, the existing NetWare 5.1 servers must have Support Pack 6a or later applied.
- D. No, the existing NetWare 4.2 servers must have Support Pack 6a or later installed.
- E. No, the NetWare 4.2 servers must be removed from the tree before NetWare 6.5 can be installed.

Answer: D

**QUESTION 7:**

You're re-installing the Application software on a server.  
What will happen to your existing user data?

- A. All existing data will be lost when the appliance re-image the drive.
- B. The installation program will ask if you want to delete or preserve the existing data.
- C. The installation program will prompt you that the Application software already exists and will exit.
- D. The existing data will be detected and copied to a new partition where it can be accessed when the installation is complete.

Answer: B

---

**QUESTION 8:**

If a filtered replica receives an update for an object with a class and attribute that are filtered out, what will happen?

- A. There are no situations in which a filtered replica receives an update for an object it has filtered out.
- B. The server does not apply the update to its replica but passes the update to other servers in the replica ring.
- C. The server applies the update to its database but purges the information when the background processes run.
- D. The server does not apply the update to its replica and does not pass the update to any other server in the replica ring.

Answer: D

---

**QUESTION 9:**

Which products are installed in a Basic NetWare File Server patterned deployment? (Choose three.)

- A. MySQL
- B. Rsync
- C. CIFS/AFP
- D. Tomcat 4
- E. Pervasive SQL
- F. Virtual Office

Answer: C D E

---

**QUESTION 10:**

You want to use an older server as a Branch Office Appliance for a remote office. The server has dual Pentium II 233 MHz CPUs, 512 MB of RAM, and 10 GB hard disk.

Can you install the Appliance software on this server hardware?

- A. Yes, all prerequisites are met for the Branch Office Appliance.
- B. No, the Branch Office Appliance software requires a faster CPU.
- C. No, the Branch Office Appliance software requires at least 1 GB of RAM.
- D. No, the Branch Office Appliance software doesn't support multi-processor systems.
- E. No, the Branch Office Appliance software requires at least 20 GB of disk space.

Answer: A

---

**QUESTION 11:**

Which NetWare 6.0 console command lets you view Novell Clustering Services (NCS) heartbeat information?

- A. CLUSTER VIEW
- B. CLUSTER POOLS
- C. CLUSTER RESOURCES
- D. CLUSTER STATS DISPLAY

Answer: D

---

**QUESTION 12:**

After upgrading from NetWare 5.1 server to Netware 6.5, you can't mount volume DATA.

Given that DATA is an NSS volume, which command would fix the problem?

- A. LOAD NW51.NSS
- B. LOAD ZLSS.NSS
- C. VCU DATA DATA2
- D. VOLMN DATA DATA2
- E. NSS /NW51 VOLUMEUPGRADE=ON
- F. NSS /ZLSS VOLUMEUPGRADE=ALL
- G. NSS /NW51 VOLUMEUPGRADE-ALL

Answer: F

---

**QUESTION 13:**

You want to remotely access the NetWare 6.5 console. Which NetWare 6.5 features allow this? (Choose two.)

- A. NetWare WebAccess
- B. NetWare WebManager
- C. NetWare RemoteAccess
- D. NetWare RemoteManager
- E. Server Management Services
- F. Remote Server Management (RConsoleJ)

Answer: D, F

---

**QUESTION 14:**

Which products are included in a NetWare AMP Server patterned deployment?  
(Choose three.)

- A. PHP
- B. UDDI
- C. Rsync
- D. MySQL
- E. Virtual Office
- F. Apache Web Server 2

Answer: A D F

---

**QUESTION 15:**

A Netware 4.2 server is currently servicing one of your branch offices. All of the user's data is saved on the USERS volume. You are deploying a Branch Office solution.

To save time, you want to install the Branch Office Application software on top of the Netware 4.2 server and then simply mount the existing USERS volume as an Application volume. Will this work?

- A. Yes, Netware 4.2 volumes are compatible with the Application software.
- B. No, Netware 4.2 volumes are incompatible with the Application software.
- C. No, the Application installation program removes all partitions and re-images the entire drive.
- D. No, the Application software may corrupt the data on the Netware 4.2 volume when it is mounted.
- E. Yes, but only if you apply load LONG.NAM and add the long name space to USERS before installing the Appliance.

Answer: C

---

**QUESTION 16:**

Which statements are true when migrating a NetWare 5 source server to a new

NetWare 6 destination server using the migration wizard? (Choose three.)

- A. The destination server should be installed into a temporary eDirectory tree.
- B. You should select the Upgrade installation type when installing the destination server.
- C. Volume names on the destination server must be the same as volume names on the source server.
- D. Destination server volumes must be the same size or larger than the volumes on the source server.
- E. Compressed volumes are migrated only if the volumes are also compressed on the destination server.

Answer: A C D

---

**QUESTION 17:**

The Nterprise Branch Office - Central Office Server patterned deployment installs the \_\_\_\_\_ product, which allows for fast incremental file transfers from Branch Office Appliances.

Answer: Rsync

---

**QUESTION 18:**

Which product is installed during a Virtual Office Server patterned deployment? (Choose three.)

- A. iSCSI
- B. Rsync
- C. eGuide
- D. OpenSSH
- E. iFolder
- F. NetStorage

Answer: CEF

---

**QUESTION 19:**

You are installing the Novell File Access Pack (NFAP) and do not want to require a simplepassword to log in to a NetWare server  
Which authentication should you select to meet your criteria?

- A. NCI
- B. Local
- C. Domain
- D. Simple
- E. Network

Answer: C

---

**QUESTION 20:**

What is the minimum version of eDirectory requires to run iMonitor?

- A. 6.5
- B. 7.0
- C. 8.0
- D. 8.5

Answer: D

---

**QUESTION 21:**

When you use the Server Consolidation Utility, the source and destination servers must use the same \_\_\_\_\_, or data could be lost.

Answer: Codepage

---

**QUESTION 22:**

You are configuring a new site for NetDrive.  
Which protocol should you specify in the URL to use WebDAV and SSL encryption?

- A. FTP
- B. SSL
- C. HTTP
- D. HTTPs
- E. Folders
- F. WebDAV

Answer: D

---

**QUESTION 23:**

During which migration phase does the migration wizard restore the trustees to the destination server?

- A. Copy volumes
- B. Edit configuration files
- C. Begin NDS migration
- D. Finish NDS migration



Answer: D

---

**QUESTION 24:**

Which files provide Remote Manager services on a Netware 6.5 server? (Choose two.)

- A. TC4.NCF
- B. RMAN.NLM
- C. NICISDI.XLM
- D. PORTAL.NLM
- E. NDSIMON.NLM
- F. HTTPSCK.NLM
- G. APACHE2.NLM

Answer: D, F

---

**QUESTION 25:**

You are preparing to install Novell Clustering Services (NCS). Enter the NetWare console command you use on each NetWare 6.5 server to record the name of the hard drive and the device ID number.

Answer: list devices

---

**QUESTION 26:**

When you install NSS, what is the default percentage of each buffer that NSS reserve for its use?

- A. 10%
- B. 20%
- C. 30%
- D. 40%
- E. 50%
- F. 60%

Answer: F

---

**QUESTION 27:**

You've created a junction on a NetWare 6.5 server that points to an traditional volume on a remote Netware 6.5 server in the same eDirectory tree. When users log in from their Windows 2000 Professional workstations using the Novell Client 4.83, the junction doesn't work.

Which is the correct resolution to this problem?

- A. Upgrade the workstations to the Novell Client 4.9
- B. Upgrade the workstations to Windows XP Home or Professional.
- C. Use the VCU.NLM utility to upgrade the remote volume to an NSS volume.
- D. Create a CIFS share, and then use the native Microsoft client software to access the share.

Answer: D

---

**QUESTION 28:**

Which command performs a read-only assessment of the NSS pool named APPS-POOL?

- A. NSS VERIFY APPS-POOL
- B. NSS /REBUILD APPS-POOL
- C. NSS /CHECKPOOL APPS-POOL
- D. NSS /POOLVERIFY=APPS-POOL
- E. NSS /CHECK /POOL=APPS-POOL

Answer: D

---

**QUESTION 29:**

What is the purpose of the iFolder pass phrase?

- A. To encrypt the user's password
- B. To help a user remember his or her password.
- C. To verify the user is who he claims to be.
- D. To securely authenticate a user to the Folder server
- E. To encrypt files that are uploaded to or downloaded from the server.

Answer: E

---

**QUESTION 30:**

You want to create a pool snapshot of the DATA\_POOL on your server. You want to use DATA\_POOL\_S as the stored on the pool.

You want to name the snapshot DATA\_POOL\_SI.

What command could you use from the server console to do this?

- A. mm snap DATA\_POOL DATA\_POOL\_S DATA\_POOL\_SI create
- B. mm snap create DATA\_POOL DATA\_POOL\_S DATA\_POOL\_SI
- C. mm snap DATA\_POOL\_SI DATA\_POOL DATA\_POOL\_S create
- D. mm snap create DATA\_POOL\_S DATA\_POOL DATA\_POOL\_SI

Answer: B

---

**QUESTION 31:**

You are creating a map for iPrint and need to open the MAPTOOL.HTM file. In which directory is this file located?

- A. SYS:PPDOCS
- B. SYS:ETC\IPPDOCS
- C. SYS:LOGIN\IPPDOCS
- D. SYS:SYSTEM\IPPDOCS
- E. SYS:PUBLIC\IPPDOCS

Answer: C

---

**QUESTION 32:**

In addition to ConsoleOne, which tool can be used to perform most cluster-related configuration?

- A. NetStorage
- B. Novell iManager
- C. NetWare Web Access
- D. NetWare Administrator
- E. NetWare Remote Manager

Answer: E

---

**QUESTION 33:**

Which are components of the DirXLM Driver? (Choose two.)

- A. Join Engine
- B. XLM Interface
- C. Publisher Filter
- D. Subscriber Filter
- E. eDirectory Interface
- F. Application Native Interface

Answer: B F

---

**QUESTION 34:**

When adding a site to NetDrive, you did not specify a protocol in the Site Address/URL field.

Which protocol is used by default?

- A. FTP
- B. HTTP
- C. HTTPS
- D. Folder

Answer: A

---

**QUESTION 35:**

Which NetWare 6.0 User Access component requires the IP address or the DNS name of the primary server in the eDirectory tree during installation of the component?

- A. NFAP
- B. iPrint
- C. iFolder
- D. NetDrive
- E. NetStorage

Answer: E

---

**QUESTION 36:**

Which scripting language is included in the NetWare 6.5 Web and Application Service product? (Choose three.)

- A. PHP
- B. C++
- C. OpenScript
- D. Novell ScriptPages (NSP)
- E. Active Server Pages (ASP)
- F. Universal Component System (UCS)

Answer: A, D, F

---

**QUESTION 37:**

Using Nterprise Brandt Office, visiting users from the home office can log in to the local Branch Office Appliance using \_\_\_\_\_, a patented Novell technology that leverages LDAP.

Answer: User Access Provisional

---

**QUESTION 38:**

When performing an across-the-wire migration, what files are stored in the SYS:\SYS.MIG directory?

- A. The migration report and error log
- B. The SYS files that were not migrated
- C. The source server's original SYS directories and files
- D. The SYS files that were in use when the volume was copied
- E. Reports listing critical and non-critical errors identified during the migration process

Answer: C

---

**QUESTION 39:**

An element of NetWare 6.5's Business Continuity Services is \_\_\_\_\_, which allows you to configure a storage area network (SAN) using standard Ethernet hardware.

Answer: Iscsi

---

**QUESTION 40:**

Given that the workstation's CD drive is assigned drive letter D, what is the Migration Wizard 6.5 location and filename?

- A. D:\MIGRTWZD.EXE
- B. D:\MIGRTWZD65.EXE
- C. D:\PRODUCTS\MIGRTWZD.EXE
- D. D:\INSTALL\MIGRTWZD65.EXE
- E. D:\PRODUCTS\MIGRTWZD\MIGRTWZD.EXE
- F. D:\PRODUCTS\MIGRTWZD\MIGRTWZD65.EXE

Answer: E

---

**QUESTION 41:**

Which are eDirectory index types that can be edited or deleted through Index Manager? (Choose two.)

- A. User
- B. Manual
- C. System
- D. Container
- E. Auto Added
- F. Functional
- G. Operational

Answer: A, E

---

**QUESTION 42:**

Which is a component of eDirectory 8.6?

- A. A 0.DSB file to hold index information about the database
- B. Streams files used to hold information such as login scripts
- C. Novell's transaction tracking system to ensure database integrity
- D. Files named 01.DB, 02.DB, ect. To hold all database record information

Answer: B

---

**QUESTION 43:**

Which NetWare 6.5 console command lets you view Novell Clustering Services (NCS) heartbeat information?

- A. CLUSTER VIEW
- B. CLUSTER POOLS
- C. CLUSTER RESOURCES
- D. CLUSTER STATS DISPLAY

Answer: D

---

**QUESTION 44:**

Which utility do you use to install Novell Clustering Services (NCS) 1.6?

- A. INSTALL
- B. ConsoleOne
- C. Novell Remote Manager
- D. NetWare Deployment Manager

Answer: D

---

**QUESTION 45:**

Which of the following are components of Novell Clustering Services (NCS) 1.6?  
(Choose three.)

- A. An IDE controller
- B. A shared disk system
- C. SCSI cards and cables
- D. eDirectory 5.0 and later

E. Netware 6 server configured to use IP

Answer: B C E

---

**QUESTION 46:**

What task must you complete when migrating a NetWare 4.2 server to NetWare 6.5? (Choose three.)

- A. Bind IPX on the destination server.
- B. Use Deployment Manager to generate GUIDs on the NetWare 4.2 server?
- C. Enable Universal Password on the destination server prior to the migration.
- D. Upgrade the 4.2 server to NetWare 6.0 server and add the long name space to all volumes being migrated.
- E. Install and configure all additional products, such as GroupWise, prior to the migration.
- F. Load LONG.NAM on the NetWare 4.2 server and add the long name space to all volumes being migrated.

Answer: A B F

---

**QUESTION 47:**

What function does LDAP Bulk Update/Replication Protocol (LBURP) serve when using ICE to import an LDIF file?

- A. LBURP provides compatible with eDirectory servers 8.5 and older.
- B. LBURP allows transactions to be applied arbitrarily to increase speed.
- C. LBURP allows ICE to send several update operations in a single request.
- D. LBURP provides added functionality to ICE by allowing add delete requests and modify requests.

Answer: C

---

**QUESTION 48:**

When should an SLP DA be configured? (Choose two.)

- A. When SLPv2 is being used
- B. When an UNSCOPED scoped exists
- C. When SLP is running on a large network
- D. When backward compatibility is needed with SLv1
- E. When environment need to keep SLP network traffic to a minimum

Answer: C E

---

**QUESTION 49:**

You want to migrate an existing NetWare 6.0 server to NetWare 6.5 server running on newer, faster server hardware.

Which strategies will work?

- A. Install NetWare 6.5 on the newer server hardware and migrate the source NetWare 6.0 server to it.
- B. Install NetWare 6.5 on the newer server hardware and migrate the source NetWare 6.0 server to it using the /MIGRATE60 switch.
- C. Install NetWare 6.5 on the newer server hardware and migrate the source NetWare 6.0 server to it. Then upgrade the destination server to NetWare 6.5 server.
- D. Perform an In-Place Upgrade to NetWare 6.5 on the source server. Install NetWare 6.5 on the destination server and migrate the source server to the destination server.

Answer: A D

---

**QUESTION 50:**

In which situation will you be able to restore a deleted NSS volume?

- A. When its associated storage pool is deleted.
- B. When both the volume and its storage pool are deleted.
- C. When the volume is deleted, but the storage pool not.
- D. When only the volume is deleted and the Purge Delay time has not passed.
- E. When its associated storage pool is deleted and the Purge Delay time has not passed.

Answer: D

---

**QUESTION 51:**

What is the minimum amount of RAM required to install Netware 6.5?

- A. 56MB
- B. 128MB
- C. 256MB
- D. 512MB
- E. 1GB

Answer: D

Explanation:

Netware 6.0 requires 256 MG RAM

Netware 6.5 requires 512 MG RAM

---



**QUESTION 52:**

While migrating a NetWare 5.1 server to NetWare 6.5 using a Windows XP Professional workstation with Novell Client 4.83 installed, the migration fails. Given that the destination server has Universal Password deployed, what is the cause of the problem?

- A. Universal Password requires Novell Client 4.9 or later.
- B. Windows XP isn't compatible with Windows XP Professional.
- C. The Migration Wizard isn't compatible with Windows XP Professional.
- D. NMAST must be disabled on the Novell Client 4.83 to be compatible with Universal Password.
- E. Novell Client 4.83 requires NCI 2.0.2 or later installed to be compatible with Universal Password.

Answer: A

---

**QUESTION 53:**

Before installing NetWare 6.0 the user performing the installation should verify they have what rights? Choose three.)

- A. Supervisor rights to the Admin object.
- B. Read rights to the Security container.
- C. Supervisor rights to the [Root] of the tree.
- D. Supervisor rights to the server hosting the CA
- E. Supervisor rights at the container where the server will be installed.
- F. Read and Write rights to all servers holding a replica of the partition where the new server will be installed.

Answer: B C E

---

**QUESTION 54:**

You regularly log into 3 NetWare 5 servers and 2 NetWare 6 servers. How many user licenses do you use when simultaneously logged into all these servers?

Answer: four

---

**QUESTION 55:**

As part of the In-place Upgrade process, what command is used to mount the NetWare 6.5 Operating System CD as a volume on a NetWare 6.0 server?

- A. CD MOUNT ALL
- B. LOAD CDROM.NSS

- C. LOAD CD9660.NSS
- D. LOAD CD9660 NLM
- E. LOAD CD9660 NLM
- F. MOUNT -T IS09660

Answer: C

---

**QUESTION 56:**

Which NetWare 6.0 User Access component requires the IP address or the DNS name of the primary server in the eDirectory tree during installation of the component?

- A. NFAP
- B. iPrint
- C. iFolder
- D. NetDrive
- E. NetStorage

Answer: E

---

**QUESTION 57:**

You have a server with the following specifications

NetWare 5.0 with Support Pack 6a

Pentium II processor with 256 MB RAM

200 MB of free space on the DOS partition

3 GB of free space on volume SYS

You want to replace this server with a NetWare 6.5 server as easily and inexpensively as possible. You have no other available machines, but purchasing new hardware is possible if it is necessary.

Which option best meets these objectives?

- A. Perform an in-place upgrade to NetWare 6.5.
- B. Perform a Netware accelerated upgrade to NetWare 6.5.
- C. Obtain new hardware to install a NetWare 6.5 server and copy the current server data to it.
- D. Use the migration wizard to migrate the current server's data to new NetWare 6.5 server hardware.

Answer: C

Explanation:

Not A: You said Perform an Inplace upgrade to Netware 6.5

This will not work because you need to aquire more RAM

Netware 6.5 requires 512 MB of ram  
and you need to have 1GB DOS Partition.

---

**QUESTION 58:**

You want to upgrade a NetWare 6 with Support Pack 1 to NetWare 6.5. The server hardware uses a Pentium II 400 MHz CPU; 512 MB RAM an 8GB hard disk driver with a 200 MB DOS partition, and a USB mouse.

Can this server be upgraded?

- A. Yes, the server meets all prerequisite requirements.
- B. No, Netware 6.5 requires a PIII 750 MHz CPU or later.
- C. No, the server's CPU is too slow and the hard disk drive is too small.
- D. No, the server's DOS partition is too small and USB mice aren't supported.
- E. No, the server doesn't have enough RAM and must have Support Pack 3 or later applied.
- F. No, the server's DOS partition is too small and must have Support Pack 3 or later applied.

Answer: F

---

**QUESTION 59:**

Which features of a traditional volume are not features of an NSS logical volume?  
(Choose two.)

- A. Hot Fix
- B. Auditing
- C. Data shredding
- D. File compression
- E. Block suballocation

Answer: B E

---

**QUESTION 60:**

You need to modify your iPrint environment. Which web-based utility do you use to create and modify Printer, NDPS Broker, and NDPS Manager objects?

- A. iMonotor
- B. ConsoleOne
- C. Remote Manager
- D. Novell iManager
- E. Server Management Console

Answer: D

---

**QUESTION 61:**

When you upgrade a NetWare 5.1 server to NetWare 6.5, what happens to the NetWare 5.1 server's Enterprise Web Server?

- A. It is reconfigured to use IP ports 81 and 444.
- B. It is reconfigured to use a secondary IP address.
- C. It is used to provide NetWare 6.5 web services instead of Apache Web Server.
- D. It is removed and its configuration parameters are migrated to the Apache Web Server's configuration file.

Answer: D

---

**QUESTION 62:**

In what ways can ICE be accessed? (Choose two.)

- A. Through MONITOR at the server console
- B. Through ConsoleOne server object details
- C. Through NWCONFIG at the server console
- D. Through the ConsoleOne Import/Export wizard
- E. Through the command-line interface of the server console

Answer: D E

---

**QUESTION 63:**

You have a server with the following specification  
NetWare 4.2 with Support Pack 9  
Pentium II processor with 256 MB RAM  
100 MB of free space on the DOS partition  
1 GB of free space on volume SYS

You want to replace this server with a NetWare 6 server as easily and inexpensively as possible. You have no other available machines, but purchasing new hardware is possible if it is necessary.

Which option best meets these objectives?

- A. Perform an in-place upgrade to NetWare 6.
- B. Perform a Netware Accelerated upgrade to NetWare 6.
- C. Obtain new hardware to install a NetWare 6 server and copy the current server data to it.
- D. Use the migration wizard to migrate the current server's data to new NetWare 6 server hardware.

Answer: D

---

**QUESTION 64:**

Which Netware 6 console command is used to configure SLPDAs?

- A. SLPDA
- B. DASLP
- C. SLPDAS
- D. SETUPDA

Answer: A

---

**QUESTION 65:**

When attempting an In-place Upgrade on a NetWare 5.1 server with Support Pack 5, the upgrade process fails.  
Which is the cause?

- A. NetWare 5.1 servers can't be upgrade: you must use the Migration Wizard.
- B. You must apply Support Pack 6 or later to upgrade a NetWare 5.1 server to NetWare 6.5.
- C. You can't use the In-place Upgrade on a NetWare 5.1 Server, you must perform a Remote Upgrade.
- D. You can't use the In-place Upgrade on a NetWare 5.1 Server, you must perform a Down-Server Upgrade.

Answer: B

---

**QUESTION 66:**

Which statements are true regarding the mirroring feature in an environment where storage pools are spread across multiple partitions and there are both NSS and traditional partitions? (Choose two.)

- A. You can only mirror NSS partitions
- B. You can mirror at the storage pool level
- C. Mirrored NSS partitions should be the same size.
- D. Traditional partitions cannot mirror NSS partitions.
- E. You can enable mirroring on an NSS partition after it is created.

Answer: C, D

---

**QUESTION 67:**

You are migrating a NetWare 5.1 server to NetWare 6.5. the source server name is DA36 and is located in FINANCE.SLC.DA in the DA-TREE. You install the

pre-migration NetWare 6.5 server as DA36 located in the TEMP-TREE.  
Why will the migration fail?

- A. The source tree name must be the same as the destination tree name.
- B. The source server name can't be the same as the destination server name.
- C. The source server name context must be the same as the destination server context.
- D. You can't migrating a NetWare 5.1 server directly to NetWare 6.5. You must first upgrade it to a NetWare 6.0 server; then migrate it to NetWare 6.5
- E. The source tree name and the source server context must be the same as the destination tree name and the destination tree context.

Answer: B

---

**QUESTION 68:**

You're configuring your Virtual Office implementation on your NetWare 6.5 server to provide secure access to iPrint services hosted on a different server, DA12.DA.com. Which is the correct URL to enter in the iPrint tab in the Services Administration task? (Choose 2.)

- A. https://DA12.DA.com/iPrint
- B. http://DA12.DA.com:443/iPrint
- C. http://DA12.DA.com:2200/iPrint
- D. https://DA12.DA.com/nps/iPrint
- E. https://DA12.DA.com:443/nps/iPrint

Answer: A, E

---

**QUESTION 69:**

Which NetWare utilities can be used to perform a Remote Upgrade? (Choose 2.)

- A. iMonitor
- B. iManager
- C. ConsoleOne
- D. Remote Manager
- E. Deployment Manager
- F. NetWare Administrator

Answer: B, E

---

**QUESTION 70:**

NetWare 6.5 includes iSCSI functionality, which allows you to create a storage area network over an Ethernet network using the \_\_\_\_\_ protocol. (Enter text)

Answer: TCP/IP

---

**QUESTION 71:**

DirXML translates directory data and events into \_\_\_\_\_ format. (Enter text)

Answer: XML

---

**QUESTION 72:**

The \_\_\_\_\_ file, located in SYS:\SYSTEM, provides OpenSSH services on a NetWare 6.5 server. (Enter text)

Answer: SSHD.NLM

---

**QUESTION 73:**

What is the role of the ARKSQL.CNF file?

- A. It contains sample XML code for creating versioning jobs.
- B. It contains configuration settings for the Archive Server.
- C. It contains XML code for configuring an upgrade from Archive and Versioning Services 1.0.
- D. It contains configuration settings for the Archive and Versioning Services MySQL instance.

Answer: D

---

**QUESTION 74:**

On a NetWare 6.5 server, you must restart the Tomcat service after installing a new iManager plug-in. How can you do this?

- A. At the server console, enter TC4RESTART.
- B. At the server console, enter TC4 /RESTART.
- C. At the server console, enter TOMCAT -RESTART.
- D. At the server console, enter TC4STOP; then enter TOMCAT4.
- E. At the server console, enter TOMCAT/STOP; then enter TOMCAT /START.

Answer: D

---

**QUESTION 75:**

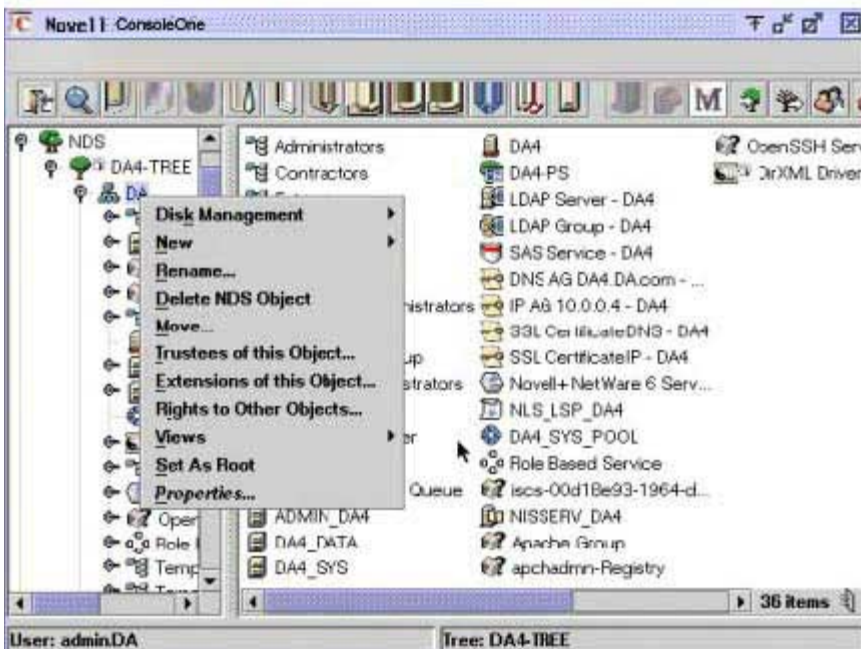
Which is a key component of NetWare 6.5's Web Application Services, providing a foundation for deploying web-based applications?

- A. iSCSI
- B. MySQL
- C. DirXML
- D. Virtual Office
- E. Novell Storage Services
- F. extend Application Server
- G. Archive and Versioning Services

Answer: B

---

**QUESTION 76:**



Click the option you would select to create a new DFS Management Context.

Answer:

Explanation: NEW

---

**QUESTION 77:**

How do you perform an In-Place Upgrade?

- A. Use iManager 2.0 or later to complete the upgrade from a workstation.
- B. Use NetWare Deployment Manager to complete the upgrade from a workstation.
- C. Mount the NetWare 6.5 Operating System CD; then select Novell > Install to begin the upgrade.



D. Boot the server from the NetWare 6.5 Operating System CD and manually execute INSTALL.BAT with the /UPGRADE switch.

Answer: C

---

**QUESTION 78:**

In Multiple Server Administration mode, the HTTPD.CONF file is divided into which of the following object classes in eDirectory? (Choose 3.)

- A. User
- B. Node
- C. Block
- D. Server
- E. Module
- F. Domain

Answer: C, D, E

---

**QUESTION 79:**

Which is a valid name you can use to name your server during a NetWare 6.5 installation? (Choose 3.)

- A. A
- B. \_Alpha
- C. .Alpha
- D. Alpha Server
- E. Alpha\_Server
- F. Alpha\_Server\_Building-B
- G. Alpha\_Server\_Building-B\_Salt-Lake-City\_United-States

Answer: B, E, F

---

**QUESTION 80:**

You're configuring your Virtual Office implementation on your NetWare 6.5 server to provide secure access to eGuide services hosted on a different server, DA7.DA.com. Which is the correct URL to enter in the eGuide tab in the Services Administration task?

- A. https://DA7.DA.com/eGuide
- B. http://DA7.DA.com:389/eGuide
- C. http://DA7.DA.com/nps/eGuide
- D. https://DA7.DA.com:636/eGuide
- E. http://DA7.DA.com/eGuide/home.html

Answer: A

---

**QUESTION 81:**

Which product can only be installed after a Remote Upgrade to NetWare 6.5 is complete?

- A. MySQL
- B. iPrint
- C. iFolder
- D. NetWare FTP Server
- E. Apache Web Server 2
- F. Novell Cluster Services

Answer: F

---

**QUESTION 82:**

Exhibit: \*MISSING\*

Certkiller .com needs to provide web-hosting services for its business partners. Each partner organization needs to use its own domain name. Your organization already has a NetWare 6.5 server in its Demilitarized Zone (DMZ) hosting your organization's web site using the Apache Web Server 2. To solve this problem, you can install a \_\_\_\_\_ in your Apache Web Server for each partner organization. (Enter text)

Answer: VIRTUAL HOST

---

**QUESTION 83:**

What is the role of the DirXML Publisher Channel?

- A. Detects change events in eDirectory.
- B. Notifies eDirectory of application-generated events.
- C. Propagates events from the application to eDirectory.
- D. Propagates events from eDirectory to the application.
- E. Applies XML-based rules to each event presented to it.
- F. Defines the object classes and associated attributes you want to synchronize.
- G. Issues and receives XML documents and converts XDS events to application events.

Answer: C

---

**QUESTION 84:**

You're configuring a Branch Office system. Your Central Office Server is named

DA1 in the DA1-TREE. Which eDirectory object do you need to extract an SSL certificate from?

- A. W0
- B. CertMutual
- C. DA-1-TREE CA
- D. SSL Certificate-DNS\_DA1
- E. SSL Certificate-LDAP\_DA1

Answer: E

---

**QUESTION 85:**

What must you do before deactivating a stored-on pool?

- A. Rebuild the original pools that have snapshots on the stored-on pool.
- B. Activate the original pools that have snapshots on the stored-on pool.
- C. Deactivate the original pools that have snapshots on the stored-on pool.
- D. Activate other stored-on pools that have snapshots on the stored-on pool to be deactivated.

Answer: C

---

**QUESTION 86:**

Which are tasks Remote Manager can perform? (Choose 3.)

- A. Place a replica on a server.
- B. Configure members of a group object.
- C. Compare SET parameters between servers.
- D. Modify time stamps on a directory or file.
- E. Run an unattended full repair on a server.
- F. Configure rights to an organizational unit.
- G. Configure trustee assignments to a directory or file.

Answer: C, D, G

---

**QUESTION 87:**

Which command will allow open files on an NSS volume named VOL1 to be copied during a consolidation project?

- A. NSS /NOMIGRATION=VOL1
- B. NSS /FILECOPYONWRITE=VOL1
- C. NSS /READAHEADBLKS=VOL2
- D. NSS /VOLUMEAUTOACTIVATE=VOL1

E. NSS /STOPNORMALCOMPRESSION=VOL1

Answer: B

---

**QUESTION 88:**

Which products are required to deploy and host Java Server Pages (JSPs)? (Choose 2.)

- A. Rsync
- B. iSCSI
- C. Tomcat 4
- D. Virtual Office
- E. Apache Web Server 2

Answer: C, E

---

**QUESTION 89:**

Your organization has three regional eDirectory trees for each geographical locations. One tree runs on NetWare 5.1 servers; the others on NetWare 6.0 servers. You've just installed a high-end NetWare 6.5 server at your organization's headquarters and want to consolidate all the servers in the disparate trees to the new server using the Server Consolidation Utility 2.5. Can this be done?

- A. Yes, the network meets the prerequisite requirements.
- B. No, the Server Consolidation Utility 2.5 can't consolidate servers residing in different trees.
- C. No, NetWare 6.0 servers can't be consolidated to a NetWare 6.5 server using the Server Consolidation Utility 2.5.
- D. No, NetWare 5.1 servers can't be consolidated to a NetWare 6.5 using the Server Consolidation Utility 2.5.
- E. No, you can't consolidate servers of mixed versions to a NetWare 6.5 server using the Server Consolidation Utility 2.5.

Answer: A

---

**QUESTION 90:**

Which utilities can be used to perform an NSS move or split operation? (Choose 2.)

- A. iManager
- B. iMonitor
- C. VOLMN.NLM
- D. ConsoleOne
- E. NSSMOVE.NLM

- F. NSSSPLIT.NLM
- G. Remote Manager
- H. NetWare Administrator

Answer: A, C

---

**QUESTION 91:**

Given that your NetWare 6.5 server has a DNS name of FS14.acmecorp.com; which URL would you use to access iManager 2.0?

- A. http://FS14.acmecorp.com:2222
- B. http://FS14.acmecorp.com:2200/iMan.html
- C. https://FS14.acmecorp.com/nps/iMan20.html
- D. http://FS14.acmecorp.com/nps/iManager.html
- E. https://FS14.acmecorp.com:2222/iMan20.html
- F. https://FS14.acmecorp.com:2200/iManager.html

Answer: D

---

**QUESTION 92:**

What is the function of the rbsTask object?

- A. Represents a leaf object used for ACL assignments.
- B. Represents a leaf object that holds a specific function.
- C. Specifies the tasks that users (members) are authorized to perform.
- D. Represents a container object that holds rbsTask and rbsBook objects.
- E. Represents a container object that holds all RBS Role and Module objects.

Answer: B

---

**QUESTION 93:**

Which files are created in SYS:\ETC when a server has been designated as host for the NSS VLDB service? (Choose 3.)

- A. VLDB.DAT
- B. VLDB.NLM
- C. VLDB.CFG
- D. VLRPR.LOG
- E. VLDB.CONF
- F. VLDBCFCG.DAT

Answer: A, D, F

---

**QUESTION 94:**

You're installing a NetWare 6.5 on a server hardware that uses a non-bootable SCSI CD drive. You decide to make a bootable floppy diskette. What DOS drivers will you need to load from your diskette to access the NetWare 6.5 Operating System CD? (Choose 3.)

- A. MSCDEX.EXE
- B. SCSI CD driver
- C. MSSCSICD.EXE
- D. SCSI.HAM driver
- E. SCSI.CDM driver
- F. SCSI hard disk driver
- G. SCSI block-mode driver
- H. SCSI host adapter driver

Answer: A, B, H

---

**QUESTION 95:**

Which products are installed in a Pre-Migration Server patterned deployment? (Choose 3.)

- A. UDDI
- B. MySQL
- C. Tomcat 4
- D. eDirectory 8.7
- E. Remote Manager
- F. Storage Management Services

Answer: D, E, F

---

**QUESTION 96:**

What is the role of DirXML Creation Rules?

- A. Controls the way data flows from one system to another.
- B. Located an existing object that matches the object generating the event.
- C. Maps the names of attributes and classes between eDirectory and the external application.
- D. Established associations between an existing entry in eDirectory and an existing entry in the external application.
- E. Controls whether an object will be added during an Add event based on the existence of required attribute values.
- F. Determines the location of the new object in eDirectory or in the external application during an Add Object event.

Answer: E

---

**QUESTION 97:**

Which licensed drivers are included in the DirXML Starter Pack? (Choose 3.)

- A. eDirectory
- B. PeopleSoft
- C. LT Domains
- D. Lotus Notes
- E. Active Directory
- F. Microsoft Exchange

Answer: A, D, E

---

**QUESTION 98:**

You've installed one Appliance and created a Settings diskette. You want to use this diskette to install subsequent Appliances. What parameters do you need to edit on the diskette before you can do this? (Choose 3.)

- A. DNS name
- B. IP address
- C. Volume names
- D. Appliance name
- E. LDAP server name
- F. Central Office Server name

Answer: A, B, D

---

**QUESTION 99:**

Which is true regarding the Apache Web Server's HTTPD.CONF file?

- A. It's a text file that can be edited only with the Apache Manager web page.
- B. It's a binary file that can be edited only with the Apache Manager web page.
- C. It's a text file that can be edited with Apache Manager or with a text editor.
- D. It's a binary file that can be edited with the Apache Manager or with a binary file editor.

Answer: C

---

**QUESTION 100:**

Which utility is used to configure Virtual Office parameters?

- A. Monitor
- B. iManager
- C. iMonitor
- D. ConsoleOne
- E. NWCONFIG.NLM
- F. Remote Manager
- G. NetWare Administrator
- H. EDIT.NLM or other text editor

Answer: B

---

**QUESTION 101:**

You're implementing DirXML to synchronize data between two eDirectory trees. How many DirXML eDirectory drivers do you need to install?

- A. Two. One in each eDirectory tree.
- B. Four. One for each tree's Publisher and Subscriber channels.
- C. One in the eDirectory tree that will be the authoritative data source.
- D. None. DirXML can communicate natively with the eDirectory to synchronize trees.

Answer: A

---

**QUESTION 102:**

Where are configuration parameters for the Apache Web Server 2 stored on a NetWare 6.5 server?

- A. SYS:\ETC\HTTPD.CONF
- B. SYS:\ETC\APACHE.CONF
- C. SYS:\ETC\HTTPD\HTTPD.CONF
- D. SYS:\ETC\APACHE2\HTTPD.CONF
- E. SYS:\APACHE2\CONF\HTTPD.CONF
- F. SYS:\APACHE2\CONF\APACHE.CONF

Answer: E

---

**QUESTION 103:**

If User Provisioning has been configured in Branch Office system, what happens when a user logs into the Branch Office Appliance for the first time?

- A. The login will fail until the administrator creates a new account on the Appliance.
- B. The Provisioner creates a user account in the Central Office Server's eDirectory tree.
- C. The Provisioner notifies the administrator that a new user account needs to be created



on the Appliance.

D. The Provisioner creates a temporary user account on the Appliance that has a default set of rights for basic system access.

E. The Provisioner launches the Appliance web-based administration tool and prompts the user to create a new user account.

F. The Provisioner creates a user account on the Appliance with the same username and password as in the Central Office Server's eDirectory tree.

Answer: F

---

**QUESTION 104:**

If a NetWare 4.2 server exists in the tree where you plan to install a NetWare 6.5 server, what must you do?

A. Remove the server from the tree.

B. Implement Universal Password before installing NetWare 6.5

C. Run Deployment Manager and select the Prepare for CIFS/AFP option.

D. Run Deployment Manager and select the Update Certificate Authority Objects option.

E. Run Deployment Manager and select the Generate GUIDs on NetWare 4 Servers option.

Answer: E

---

**QUESTION 105:**

What is the role of the DirXML Driver Application Native Interface?

A. Detects change events in eDirectory.

B. Notifies eDirectory of application-generated events.

C. Propagates events from the application to eDirectory.

D. Propagates events from eDirectory to the application.

E. Applies XML-based rules to each event presented to it.

F. Defines the object classes and associated attributes you want to synchronize.

G. Issues and receives XML documents and converts XDS events to application events.

Answer: B

---

**QUESTION 106:**

In your tree, you deployed Universal Password. Your users now can't log in from their Windows 98 Second Edition workstations using the Novell Client 3.2. What is the resolution to the problem? (Choose 3.)

A. Install Client NCI 2.6 or later.

B. Install NMAAS Client 2.2 or later.

- C. Deploy the Novell Client 3.4 on the workstations.
- D. Deploy the Novell Client 4.83 on the workstations.
- E. Configure each user object with a Simple Password.
- F. Upgrade the workstations to Windows 2000 Professional.
- G. Upgrade the workstations to Windows XP Home or Professional.

Answer: A, B, C

---

**QUESTION 107:**

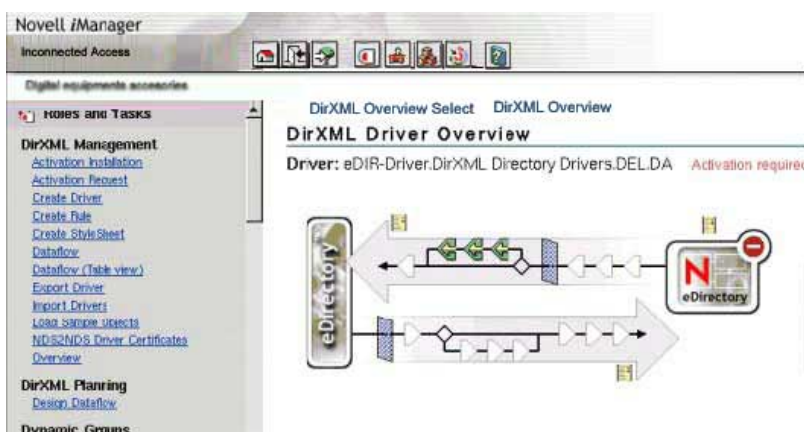
A NetWare 4.2 server is currently servicing one of your branch offices. All of the user's data is saved on the USERS volume. You are deploying a Branch Office solution. To save time, you want to install the Branch Office Appliance software on top of the NetWare 4.2 server and then simply mount the existing USERS volume as an Appliance volume. Will this work?

- A. Yes, NetWare 4.2 volumes are compatible with the Appliance software.
- B. No, NetWare 4.2 volumes are incompatible with the Appliance software.
- C. No, the Appliance installation program removes all partitions and re-images the entire drive.
- D. No, the Appliance software may corrupt the data on the NetWare 4.2 volume when it is mounted.
- E. Yes, but only if you apply load LONG.NAM and add the long name space to USERS before installing the Appliance.

Answer: C

---

**QUESTION 108:**



Click the Matching Rule on the Publisher Channel.

Answer:

Explanation: THIRD TRIANGLE AT TOP ROW

---

**QUESTION 109:**

Before you configure multiple Apache Web Servers to use a common configuration in eDirectory, you must make each server a member of the same \_\_\_\_\_. (Enter text)

Answer: GROUP

---

**QUESTION 110:**

You've just activated a pool snapshot named DATA\_POOL\_S3. The volume in the original pool is named DAT

A. What is the default name of the volume in the activated pool snapshot?

- A. DATA
- B. DATA\_SV
- C. DATA\_S3
- D. DATA\_POOL\_S3V
- E. DATA\_POOL\_S3\_DATA

Answer: B

---

**QUESTION 111:**

Which are included in NetWare 5.6's Open Source Services? (Choose 3.)

- A. KDE
- B. PHP
- C. Wine
- D. eGuide
- E. MySQL
- F. SendMail
- G. Apache Web Server

Answer: B, E, G

---

**QUESTION 112:**

If your server's DNS name is Certkiller 1. Certkiller .COM, you would use \_\_\_\_\_ as the URL to access Virtual Office on your server. (Enter text)

Answer: HTTP:// Certkiller 1. Certkiller .COM/vo

---

**QUESTION 113:**

Which products does Virtual Office provide web-based access to? (Choose 3.)

- A. iSCSI
- B. Rsync
- C. eGuide
- D. iFolder
- E. NetStorage
- F. Web Search Server

Answer: C, D, E

---

**QUESTION 114:**

Your organization has three regional Windows NT Domains for each geographical location. A Windows NT 4 server hosts each domain. You also have a NetWare 5.1 server providing services for your organization's headquarters. You've just installed a high-end NetWare 6.5 server into its own tree and want to consolidate all the servers in your organization to the new server using the Server Consolidation Utility 2.5. Can this be done?

- A. Yes, the network meets the prerequisite requirements.
- B. No, the Server Consolidation Utility 2.5 can't consolidate Windows NT Domains.
- C. No, multiple Domains can't be consolidated to a NetWare 6.5 server using the Server Consolidation Utility 2.5.
- D. No, NetWare 5.1 servers can't be consolidated to a NetWare 6.5 server using the Server Consolidation Utility 2.5.
- E. No, you can't consolidate a mixture of NT Domains and NetWare servers to a NetWare 6.5 server using the Server Consolidation Utility 2.5.

Answer: A

---

**QUESTION 115:**

Which command is used to load the iSCSI target service on a NetWare 6.5 server?

- A. TON
- B. ION
- C. ITAR
- D. TARON
- E. TARGET
- F. SCSITAR

Answer: A

---

**QUESTION 116:**

You are working at the server console of FS1. You need to securely copy files to FS12, located in another city. FS12's IP address is 192.168.1.12. Which command will allow you to open an OpenSSH ftp connection to FS12 as your admin user from the server console of FS1?

- A. sftp FS1 FS12 admin
- B. openftp FS12-u admin
- C. sftp admin@192.168.1.12
- D. openftp admin@192.168.1.12
- E. ssh ftp 192.168.1.12-u admin

Answer: C

---

**QUESTION 117:**

Which NetWare 6.5 service allows you to centrally manage remote file system data and user provisioning?

- A. iSCSI
- B. DirXML
- C. iFolder
- D. Virtual Office
- E. Archive and Versioning
- F. Nterprise Branch Office
- G. Novell File Access Protocols

Answer: F

---

**QUESTION 118:**

While performing a consolidation project from NetWare 5.1 to NetWare 6.5, you encounter SMDR communication errors and the consolidation fails. What is the resolution to this problem?

- A. Enable binary comparison.
- B. Wait for eDirectory to synchronize.
- C. Verify that NDPSM.NLM has been loaded on both servers.
- D. Migrate the source server to NetWare 6.0 using the Migration Wizard first; then consolidate the server to NetWare 6.5.
- E. Place an entry for the source server in the destination server's HOSTS file; then place an entry for the destination server in the source server's HOSTS file.

Answer: E

---

**QUESTION 119:**

During a consolidation project, you mark Yes in the Synchronize Files and Folders screen. What will happen during the consolidation as a result?

- A. No files from the source server will be consolidated to the destination server.
- B. All files from the source server will be consolidated to the destination server.
- C. Files and folders will be deleted from the source server if they are not found on the destination server.
- D. Files and folders will be deleted from the destination server if they are not found on the source server.
- E. The utility will scan all dropped folders and delete files from the source server that don't exist on the destination server.

Answer: D

---

**QUESTION 120:**

What is the role of the DirXML eDirectory Interface?

- A. Detects change events in eDirectory.
- B. Notifies eDirectory of application-generated events.
- C. Propagates events from the application to eDirectory.
- D. Propagates events from eDirectory to the application.
- E. Applies XML-based rules to each event presented to it.
- F. Defines the object classes and associated attributes you want to synchronize.
- G. Issues and receives XML documents; converts XDS events to application events.

Answer: A

---

**QUESTION 121:**

Novell recommends that you remove the \_\_\_\_\_ attribute from all DirXML filters to avoid synchronization problems. (Enter text)

Answer: ACL

---

**QUESTION 122:**

If you need limited access to your server for debugging purposes, Remote Manager provides the \_\_\_\_\_ user account.

Answer: SDEBUG

---

**QUESTION 123:**

You work as an administrator at Certkiller .com. You're configuring your Virtual Office Implementation on your NetWare 6.5 server to provide access to user's email

accounts services hosted on a Linux server, mail.DA.com. Which mail server type should you select in the Email tab in the Services Administration task?

- A. Postfix
- B. SendMail
- C. IMAP/POP3
- D. GroupWise
- E. Lotus Notes
- F. IMAP Server
- G. POP3 Server
- H. Microsoft Exchange

Answer: C

---

**QUESTION 124:**

What must you do before modifying the stored-on pool associated with an original pool?

- A. Deactivate the stored-on pool
- B. Delete all existing snapshots of the original pool
- C. Rebuild the original pool; then deactivate the stored-on pool
- D. Create a new stored-on pool and copy all existing snapshots of the original pool to it

Answer: B

---

**QUESTION 125:**

You work as an administrator at Certkiller .com. You manage a network with four servers; Certkiller 1, Certkiller 2, Certkiller 3, Certkiller 4, Certkiller 1 has the master replica of the root partition. You've implemented DirXML in your network to synchronize eDirectory with a Windows NT domain. You downloaded and installed the DirXML iManager plug-ins on Certkiller 1. When you run iManager from Certkiller 2, the DirXML roles aren't visible. What is the resolution to this issue?

- A. You must manually install the DirXML iManager plug-ins on Certkiller 2
- B. You must place a read/write replica of the root partition on Certkiller 2
- C. You must configure Certkiller 1 to synchronize its iManager plug-ins with Certkiller 2
- D. You must place a read/write replica of the partition containing the RBS objects on Certkiller 2
- E. You must create a filtered replica of the root partition containing only users and groups on Certkiller 2
- F. It can't be resolved. You can only have one instance of a given iManager plug-in in each eDirectory tree

Answer: A

---

**QUESTION 126:**

What can a DFS junction point to? (Choose 2)

- A. A subdirectory on a volume on the local server
- B. The root directory of a volume on the local server
- C. A subdirectory on a remote server in the same eDirectory tree
- D. A subdirectory on a remote server in a different eDirectory tree
- E. The root directory of a volume on a remote server in the same eDirectory tree
- F. The root directory of a volume on a remote server in a different eDirectory tree

Answer: A, E

---

**QUESTION 127:**

You work as an administrator at Certkiller .com. Replication between your appliances and the Central office server is falling. The system is connected with fractional T1 links. The names of the Appliances are APP-1, APP-2, and APP-3. You've configured automatic user provisioning. When you configured Rsync, you specified that the DATA volumes on App-1, App-2, and App-3 be replicated. What s problem?

- A. Appliance name are case-sensitive
- B. You can't replicate volumes other than SYS
- C. Rsync isn't compatible with fractional T1 links
- D. NMAST must be disabled on the Appliances prior to replication
- E. NCI must be disabled on the Appliances prior to replication
- F. Automatic user provisioning must be disabled prior to replicating data

Answer: A

---

**QUESTION 128:**

You want to move a user object in your tree. Which iManager 2.0 role contains a task that can do this?

- A. Users
- B. Rights
- C. Schema
- D. Groups
- E. Servers
- F. Help Desk
- G. Partition and Replicas
- H. eDirectory administration



Answer: H

---

**QUESTION 129:**

Which utility is used to verify that each server has the cryptographic keys necessary to securely communicate with the other servers in the tree?

- A. SECURE.NLM
- B. CONFIG.NLM
- C. SDIDIAG.NLM
- D. MONITOR.NLM
- E. PKICHECK.NLM
- F. SDINOTES.NLM
- G. SECUREDIAAG.NLM

Answer: C

---

**QUESTION 130:**

You work as an administrator at Certkiller .com. You are consolidating a NetWare 5.1 server to NetWare 6.5. After completing the process, you notice that many files on the destination server are smaller than the source files on the source server. What is the resolution to this problem?

- A. Enable binary comparison
- B. Wait for eDirectory to synchronize
- C. Verify that SLP is working correctly on both servers
- D. Verify that NDPSM.NLM has been loaded on both servers
- E. Download and run the latest SMDR.NLM and TSAs on both servers

Answer: E

---

**QUESTION 131:**

The file that is used to configure the Apache configuration daemon is named \_\_\_\_\_ and is located in SYS:\APACHE2\CONF\DAEMON.

Answer: STARTUP.PROPERTIES

---

**QUESTION 132:**

Which tasks does Virtual Office allow users to complete? (Choose 3)

- A. Bookmark web pages
- B. Publish a personal web page

- C. Edit documents in a web interface
- D. Configure printers in a web interface
- E. Edit presentations in a web interface
- F. Create spreadsheets in a web interface

Answer: A, B, D

---

**QUESTION 133:**

What command is used from the server console to start the Apache Manager service?

- A. WEBMAN
- B. NVXADUP
- C. ADMINWEB
- D. WEBMANUP
- E. AP2WEBMAN
- F. APACHEADM
- G. AP2WEBMANUP

Answer: E

---

**QUESTION 134:**

Which operating system uses a version of NDS that is incompatible with NetWare 6.5?

- A. NetWare 3.1
- B. NetWare 4.1
- C. NetWare 4.2
- D. NetWare 5.0
- E. NetWare 5.1
- F. NetWare 6.0
- G. NetWare 4.11

Answer: B

---

**QUESTION 135:**

You work as an administrator at Certkiller .com. You have configured a DFS management context with the VLDB service running on Certkiller 1. In the SHARED directory on Certkiller 1's Certkiller TA volume, you created a junction to the root of the VOL1 volume on Certkiller 2. You then created a CIFS share for the SHARED directory and granted the appropriate rights to your user and group objects to access the directory. When users access the junction from their Windows 2000 Professional workstations, it fails to take them to VOL1 on Certkiller 2. Which is the

resolution to his problem?

- A. Load VLDB.NLM on Certkiller 2
- B. Add a VLDB replica to Certkiller 2
- C. Upgrade to the Novell Client 4.9
- D. Enable DFS support for CIFS clients
- E. Upgrade the workstations to Windows XP Home or Professional

Answer: D

---

**QUESTION 136:**

When using sftp, which command is used to change the current directory on the local host?

- A. is
- B. cd
- C. lis
- D. lcd
- E. chdir
- F. chdir-local

Answer: D

---

**QUESTION 137:**

You want to create a new user in your tree. Which iManager 2.0 roles contain tasks that can do this? (Choose 3)

- A. Users
- B. Rights
- C. Schema
- D. Groups
- E. Servers
- F. Help Desk
- G. Partition and Replicas
- H. EDirectory Administration

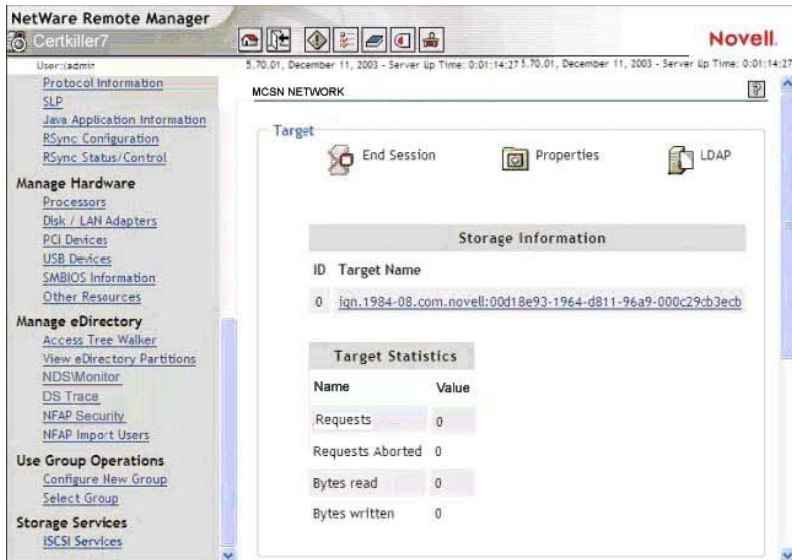
Answer: A, F, H

---

**QUESTION 138:**

An element of NetWare 6.5's Productivity-Enhancing Services is \_\_\_\_\_, which allows users to create web-based collaboration teams.

Answer: Virtual teams

**QUESTION 139:****Exhibit**

If you wanted to connect to the iSCSI target displayed in the exhibit, what command would you enter at the iSCSI initiator server console? The IP address of the target is 10.0.0.4

- A. ISCSINIT CONNECT 10.0.0.4 DA4
- B. ISCSINIT CONNECT TARGET=10.0.0.4
- C. ISCSINIT 10.0.0.4 iqn.1984-08.com.novell:00d18e93-1964-d811-96a9-000c29cb3ecb
- D. ISCSINIT CONNECT 10.0.0.4  
iqn.1984-08.com.novell:00d18e93-1964-d811-96a9-000c29cb3ecb
- E. ISCSINIT CONNECT  
iqn.1984-08.com.novell:00d18e93-1964-d811-96a9-000c29cb3ecb 10.0.0.4
- F. ISCSINIT CONNECT TARGET=10.0.0.4  
NAME=iqn.1984-08.com.novell:00d18e93-1964-d811-96a9-000c29cb3ecb

Answer: D

**QUESTION 140:**

A server that functions as a disk controller for an iSCSI shared disk system is called an iSCSI \_\_\_\_\_

Answer: TARGET

**QUESTION 141:**

Which of the following tasks are performed within the Virtual Office web page instead of iManager? (Choose 2)

- A. Chat IP port
- B. Team file share
- C. Add team owners
- D. Set notify owners
- E. Set notify preferences
- F. IMAP/POP3 server address

Answer: C, E

---

**QUESTION 142:**

Which NetWare utilities can be used to remotely install products on a NetWare 6.5 server? (Choose 2)

- A. iMonitor
- B. ConsoleOne
- C. Deployment manager
- D. NetWare administrator
- E. NetWare GUI install utility through remote manager

Answer: C, E

---

**QUESTION 143:**

What is the role of a DirXML Filter?

- A. Controls the way data flows from one system to another
- B. Locates an existing object that matches the object generating the event
- C. Maps the names of attributes and classes between eDirectory and the external application
- D. Establishes associations between an existing entry in eDirectory and an existing entry in the external application
- E. Controls whether an object will be added during an Add event based on the existence of required attribute values
- F. Determines the location of the new object in eDirectory or in the external application during an Add Object event

Answer: A

---

**QUESTION 144:**

You work as an administrator at Certkiller .com. You are configuring DirXML to synchronize three eDirectory trees: DA-TREE, EMA-TREE, and Certkiller -TREE. Data should flow only from DA-TREE to the other two trees. How many key material objects (KMOs) will you need?

- A. Three: one for each tree
- B. SIX: One for each publisher and Subscriber channel on each server
- C. Two: One for the Publisher channel and one for the Subscriber channel
- D. One KMO should be configured in DA-TREE as it is the authoritative data source
- E. Four: One each for the authoritative Publisher and Subscriber channels and one for each remote tree

Answer: A

---

**QUESTION 145:**

Given that a particular OpenSSH configuration has not been imported into the eDirectory tree; where is the OpenSSH configuration is stored?

- A. SYS:\ETC\OPENSSH.CFG
- B. SYS:\ETC\SSHD\_CONFIG
- C. SYS:\SYSTEM\OPENSSH.CFG
- D. SYS:\SYSTEM\SSHD\_CONFIG
- E. SYS:\ETC\SSH\OPENSSH.CFG
- F. SYS:\ETC\SSH\SSHD\_CONFIG

Answer: E

---

**QUESTION 146:**

Your organization has implemented ZENworks for Servers Tiered Electronic Distribution with Nteprise Branch Office. Given this, which IP port must be kept open on your organization's firewalls?

- A. 20
- B. 21
- C. 631
- D. 873
- E. 1299
- F. 2222

Answer: E

---

**QUESTION 147:**

To get the name of an Appliance, you can enter \_\_\_\_\_ at the Appliance command prompt.

Answer: GET SERVER NAME

---

**QUESTION 148:**

You work as an administrator at Certkiller .com. You are performing a Remote upgrade from your office on as server in a different city. You don't have access to the server console of the server being upgraded. Which upgrade option should you choose?

- A. Default upgrade
- B. Manual upgrade
- C. Custom upgrade
- D. Complete upgrade
- E. Automated upgrade

Answer: A

---

**QUESTION 149:**

You work as an administrator at Certkiller .com. You're installing NetWare 6.5 on server hardware that has a hard disk drive and a tape drive connected to a SCSI adapter. It also has a CD drive connected to the motherboard's built-in IDE adapter. How many .CDM drivers should be detected and loaded during the NetWare 6.5 installation?

- A. 1 SCSI and 1 IDE device driver
- B. 2 SCSI device drivers and 1 IDE device driver
- C. 1 SCSI device driver; IDE devices don't require .CDM drivers
- D. 1 IDE device driver; SCSI devices don't require .CDM drivers
- E. 2 SCSI device rivers; IDE devices don't require .CDM drivers

Answer: A

---

**QUESTION 150:**

The iSCSI SAN storage server patterned deployment makes the NetWare 6.5 server an iSCSI \_\_\_\_\_

Answer: TARGET

---

**QUESTION 151:**

Assuming the CD drive in your workstation is assigned drive letter E, where is the installation file for the server consolidation utility located?

- A. E:\NWSC.EXE
- B. E:\SERVCONS.EXE
- C. E:\TOOLS\NWSC.EXE

- D. E:\TOOLS\SERVCONS.EXE
- E. E:\PRODUCTS\SERVCONS\NWSC.EXE
- F. E:\PRODUCTS\SERVCONS\SERVECONS.EXE

Answer: E

---

**QUESTION 152:**

Virtual office allows users to set up their own \_\_\_\_\_ to increase real-time collaboration.

Answer: VIRTUAL TEAMS

---

**QUESTION 153:**

What does the View and Update NDS option in Deployment Manager do?

- A. Upgrade existing versions of NDS in the tree to eDirectory
- B. Copies a new version of DS.NLM and SGUID.NLM to NetWare 4 servers in the tree
- C. Places a Read/Write replica of the root partition on all existing servers in the tree
- D. Patches existing servers in the tree to a revision level compatible with the version of eDirectory used by NetWare 6.5
- E. Locates servers that are running incompatible versions of directory services and removes them from the tree

Answer: A

---

**QUESTION 154:**

How many snapshots can exist on a particular stored-on pool?

- A. 10
- B. 50
- C. 100
- D. 250
- E. 500
- F. 1000

Answer: E

---

**QUESTION 155:**

If the virtual office management role doesn't appear in iManager after installing the product on your NetWare 6.5 server, which iManager modules should be installed to fix the problem? (Choose 2)



- A. VO.NPM
- B. VIROFF.NPM
- C. VOADMIN.NPM
- D. VIROFFADM.NPM
- E. VIRTUALOFFICE.NPM
- F. VIRTUALOFFICEADM.NPM
- G. VIRTUALOFFICEADMIN.NPM

Answer: E, G

---

**QUESTION 156:**

If your NetWare 6.5 server is behind a NAT router or a proxy server and you will occasionally need to access Remote Manager from outside of the firewall, which load line will provide access?

- A. LOAD PORTAL.NLM/NATPASSTHRU
- B. LOAD HTTPSCK.NLM/NATPASSTHRU
- C. LOAD PORTAL.NLM/SSL/KEYFILE: "SSL CertificateIP"
- D. LOAD HTTPSCK.NLM/SSL/KEYFILE: "SSL CertificateIP"
- E. LOAD PORTAL.NLM/HOSTIDS:1/SSL/KEYFILE: "SSL CertificateIP"
- F. LOAD HTTPSCK.NLM/HOSTIDS:1/SSL/KEYFILE: "SSL CertificateIP"

Answer: F

---

**QUESTION 157:**

Any user that is a member of the \_\_\_\_\_ group in the eDirectory tree is granted access to the OpenSSH Manager to modify the configuration of OpenSSH servers.

Answer: SSHADMN-ADMINISTRATORS

---

**QUESTION 158:**

Which product can you use to access previous versions of a file created by Archive and Versioning Services?

- A. iFolder
- B. iManager
- C. ConsoleOne
- D. NetStorage
- E. Remote Manager

Answer: D

---

**QUESTION 159:**

Which are components of the DirXML Engine? (Choose 2)

- A. Join Engine
- B. DirXML Driver
- C. Publisher Filter
- D. Subscriber Filter
- E. eDirectory interface

Answer: A, E

---

**QUESTION 160:**

If you wanted to use your NetWare 6.5 server to host web-enabled database applications, which patterned deployment option should you select?

- A. Management server
- B. Virtual Office server
- C. NetWare AMP server
- D. Apache/Tomcat server
- E. Basic NetWare File Server
- F. NetWare Web Search Server

Answer: C

---

**QUESTION 161:**

Which are components of Nteprise Branch Office? (Choose 3)

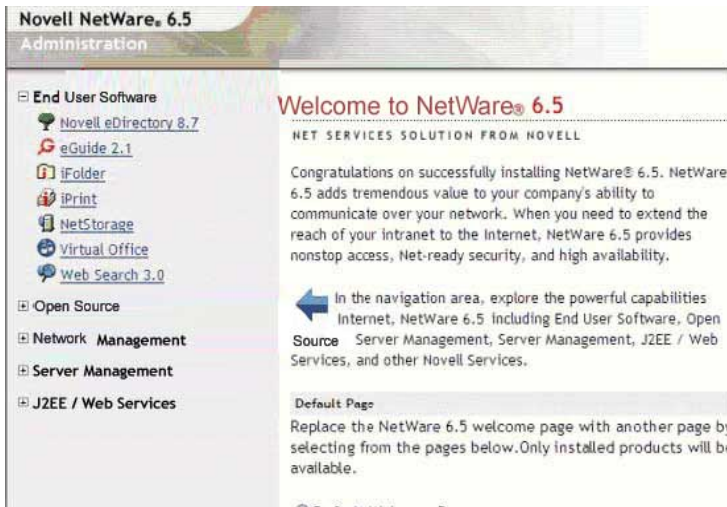
- A. UDDI
- B. iSCSI
- C. Rsync
- D. MySQL
- E. Central Office Server
- F. Branch Office Appliance
- G. Novell exteNd Application Server

Answer: C, E, F

---

**QUESTION 162:**

Exhibit



Click on the option you would use to start Apache Manager

Answer:

Explanation: OPEN SOURCE

---

### QUESTION 163:

You work as an administrator at Certkiller .com. You are configuring DirXML to synchronize three eDirectory trees: Certkiller -TREE, EMA-TREE, and ACMECORP-TREE. Data should flow only from DA-TREE to the other two trees. Data from the other trees should not flow into Certkiller -TREE. How should you configure the eDirectory driver in the Certkiller -TREE?

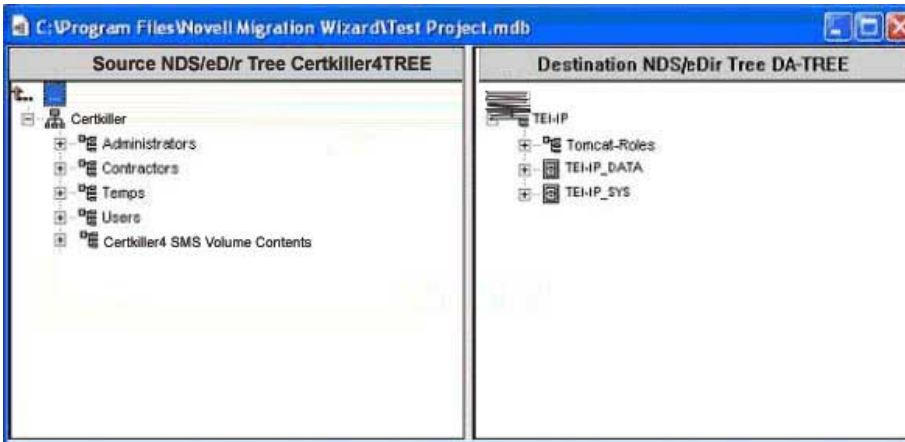
- A. Flat
- B. Dept
- C. Master
- D. Primary
- E. Mirrored
- F. Subordinate
- G. Authoritative
- H. Bi-directional

Answer: F

---

### QUESTION 164:

Exhibit



Click on the location where you would drop the contents of the SYS volume on the source server if you wanted them to be migrated to DA4\_DATA on the destination server.

Answer:

Explanation: TEMP\_SYS

### QUESTION 165:

Which parameters can be configured in the iManager Services Administration task? (Choose two)

- A. Team file share
- B. eGuide parameters
- C. Company information
- D. Char server IP port
- E. Team access controls

Answer: B, C

### QUESTION 166:

You are working at the server console of FS1. You need to secure access to the server console of FS12, located in another city. FS12's IP address is 192.168.1.12. Which command will allow you to open an OpenSSH connection to FS12 as your admin user from the server console of FS1?

- A. Ssh FS1 FS12 admin
- B. openssh FS12-u admin
- C. ssh admin admin@192.168.1.12
- D. openssh admin admin@192.168.1.12
- E. ssh open admin@192.168.1.12
- F. ssh open 192.168.1.12-u admin

Answer: C

---

**QUESTION 167:**

If a NetWare 4.1 server exists in the tree into where you plan to install a NetWare 6.5 server, what must you do?

- A. Remove the server from the tree
- B. Use the view and Update NDS option in Deployment Manager
- C. Use the Extend the Core Schema option in Deployment Manager
- D. Use the Prepare for New eDirectory option in Deployment Manager
- E. Use the Generate GUIDs on NetWare 4 Servers option in Deployment Manager

Answer: A

---

**QUESTION 168:**

While performing a consolidation project using servers in two different eDirectory trees, the Server Consolidation Utility displays the Tree to Tree Object Match-Up screen. What types of objects need to be matched between the two trees? (Choose two)

- A. User objects
- B. Group objects
- C. Country objects
- D. NCP server objects
- E. LDAP group objects
- F. LDAP server objects
- G. Organization objects
- H. Organizational unit objects

Answer: A, D

---

**QUESTION 169:**

Which file displays a customized disclaimer page that is presented when accessing Remote Manager?

- A. SYS:\LOGIN\PRTLDISC.HTM
- B. SYS:\PUBLIC\PRTLTX.THTM
- C. SYS:\SYSTEM\PRTLTX.THTM
- D. SYS:\SYSTEM\PRTLDISC.HTM
- E. SYS:\PUBLIC\PRTLDISC.HTM

Answer: A

---

**QUESTION 170:**

Which command should you execute on a NetWare 4.2 server prior to consolidating it to a NetWare 6.5 server to prevent compressed files from decompressing when accessed?

- A. SET FAST VOLUME MOUNTS = ON
- B. SET COMPRESSION DAILY CHECK STOP HOUR = 0
- C. SET MAXIMUM CONCURRENT COMPRESSIONS = OFF
- D. SET ALLOW UNOWNED FILES TO BE EXTENDED = OFF
- E. SET MINIMUM COMPRESSION PERCENTAGE GAIN = 1
- F. SET CONVERT COMPRESSED TO UNCOMPRESSED OPTION = 0

Answer: F

---

**QUESTION 171:**

What is the function of the rbsCollection object?

- A. Represents a leaf object used for ACL assignments.
- B. Represents a leaf object that holds a specific function.
- C. Represents a container object that holds rbsTask and rbsBook.
- D. Specifies the tasks that users who are members are authorized to perform.
- E. Represents a container object that holds all RBS Role and Module objects.

Answer: E

---

**QUESTION 172:**

Which web-based services does Virtual office provide? (Choose three)

- A. Chat
- B. Calendar
- C. Bookmarks
- D. Spreadsheet
- E. Word processor
- F. Project management

Answer: A, B, C

---

**QUESTION 173:**

When preparing a server for a Remote Upgrade, which tasks should you perform? (Choose three)

- A. Disconnect all users and disable user login
- B. Remove (uninstall) all Support Packs and patches
- C. Make a backup of the eDirectory tree and the server file system
- D. If running ZENworks for Servers 2, install ZENworks for servers 3 prior to the upgrade
- E. Ensure all applications hosted by the server are up and running during the upgrade so they will be detected by the upgrade utility

Answer: A, C, D

---

**QUESTION 174:**

You're planning a Branch Office Deployment. Your system will contain one central office server at your organization's corporate headquarters and three remote Branch office Appliances connected by a T1 link. You want to manage all user accounts at the home office. To do this, what service must be working properly on the central office server?

- A. LDAP
- B. Rsync
- C. MySQL
- D. iSCSI
- E. Tomcat
- F. OpenSSH
- G. Novell exteNd Application Server

Answer: B

---

**QUESTION 175:**

In NetWare 6.5, you can configure all services to use a common password, called

---

Answer: universal password

---

**QUESTION 176:**

A server that accesses iSCSI shared storage is called an iSCSI \_\_\_\_\_

Answer: target

---

**QUESTION 177:**

What is the recommended size for your server's DOS partition?

- A. 500 MB + the amount of RAM in the system

- B. 200 MB + the amount of RAM in the system
- C. 200 MB + the amount of RAM in the system + the amount of L1 cache in the system
- D. 300 MB + the amount of RAM in the system + the amount of L1 cache in the system

Answer: A

---

**QUESTION 178:**

Which products can be implemented with Apache Web Server 2 on NetWare 6.5 on NetWare 6.5 to provide functionality beyond that which is possible with scripting languages? (Choose two)

- A. PHP
- B. Jakarta-Tomcat
- C. Web Search Server
- D. Enterprise Web Server
- E. Active Server Pages (ASP)
- F. Novell Script for NetWare (NSN)
- G. Novell exteNd Application Server

Answer: B, C

---

**QUESTION 179:**

What is the role of the DirXML Join Engine?

- A. Detects change events in eDirectory.
- B. Notifies eDirectory of application-generated events.
- C. Propagates events from the application to eDirectory.
- D. Propagates events from eDirectory to the application.
- E. Applies XML-based rules to each event presented to it.
- F. Defines the object classes and associated attributes you want to synchronize.
- G. Issues and receives XML documents and converts XDS events to application events.

Answer: E

---

**QUESTION 180:**

You manage 3 Apache Web Servers running on three different NetWare 6.5 servers. You have configured your web servers to share a common configuration stored in eDirectory. You assigned your assistant to make a change to the web server configuration. However, instead of using Apache Manager, he simple edited the HTTPD.CONF file on one individual server. What is the result of this action?

- A. Only the local Apache Web Server will use this new configuration when it is restarted
- B. The local Apache Web Server will abend when it detects the conflicting



configurations

C. All apache web servers in the server group will abend when the altered configuration is replicated by the configuration daemon

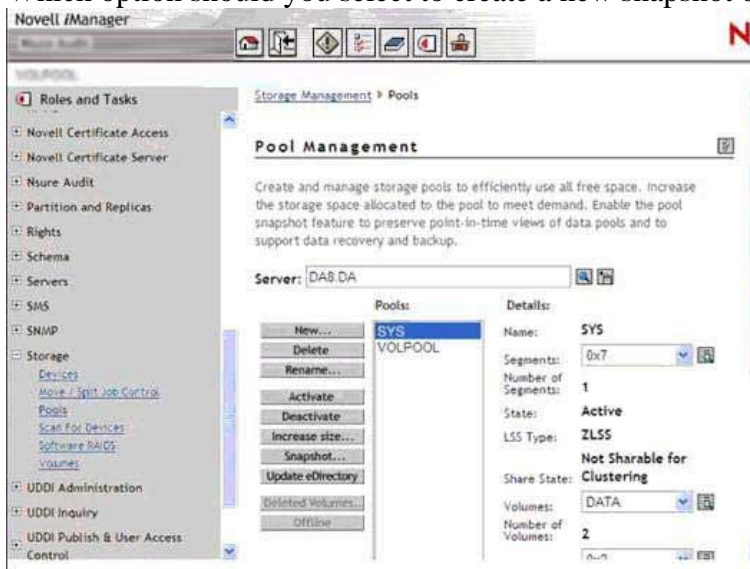
D. All apache web servers in the server group will ignore the configuration change. Only changes made in eDirectory with Apache Manager are used.

E. All Apache Web Servers in the server group will use the new configuration when the configuration daemon detects the changed file and replicates it to all other servers

Answer: E

### QUESTION 181:

Which option should you select to create a new snapshot of the SYS pool?



Answer:

Explanation: SNAPSHOT

### QUESTION 182:

You've just completed a Remote Upgrade to NetWare 6.5 on 4 servers ( Certkiller 1, Certkiller 2, Certkiller 3, and Certkiller 4) in your tree. Your tree has two partitions. Certkiller 1 has a aster replica of each partition. Certkiller 2 and Certkiller 3 each have a read/write replica of each partition. Certkiller 4 has a filtered replica of the second partition. Which servers need to have an Unattended Full Repair run on them as part of the post-upgrade process?

- A. Certkiller 1
- B. Certkiller 4
- C. Certkiller 2 and Certkiller 3
- D. Certkiller 1 and Certkiller 4

- E. Certkiller 1, Certkiller 2, and Certkiller 3
- F. Certkiller 2, Certkiller 3, and Certkiller 4
- G. Certkiller 1, Certkiller 2, Certkiller 3, and Certkiller 4

Answer: G

---

**QUESTION 183:**

Files larger than \_\_\_\_\_ GB can't be replicated with Rsync.

Answer: 2

Answer: two

---

**QUESTION 184:**

Which components are used to define a DirXML authoritative data source? (Choose three)

- A. Rules
- B. Filters
- C. Stylesheets
- D. Packet filtering
- E. Port assignments
- F. License agreements

Answer: A, B, C

---

**QUESTION 185:**

After installing Support Pack 1 on NetWare 6.5, where are the Archive and Versioning files located?

- A. In SYS:\ARKMAN
- B. In SYS:\ARKMANAGER
- C. In SYS:\PUBLIC\ARKMANAGER
- D. On the NetWare 6.5 Products CD in the PRODUCTS\ARKMAN directory
- E. On the NetWare 6.5 Operating System CD in the TOOLS\ARKMAN directory

Answer: B

---

**QUESTION 186:**

How many split or move requests can be concurrently processed on a NetWare 6.5 server?

- A. One
- B. Two
- C. Three
- D. Four
- E. Five six
- F. Unlimited

Answer: D

---

**QUESTION 187:**

How is eDirectory used when Apache Manager is configured in Multiple Server Administration model? (Choose two)

- A. It is used as a database for storing Apache configuration parameters
- B. It is used to perform reverse lookups on requests coming from outsider your domain
- C. It allows configuration parameters to be shared among multiple Apache Web Servers
- D. It is used as a repository for Open Source applets, allowing them to be shared concurrently by multiple Web Servers
- E. With partitioning and replication, it is used to provide failover functionality to distributing multiple instances of the same web server among several NetWare 6.5 servers.

Answer: A, C

---

**QUESTION 188:**

In RBS, a defined set of tasks that can be delegated to users in the tree is called a \_\_\_\_\_.

Answer: ROLE

---

**QUESTION 189:**

Which port does ssh use when running on a NetWare 6.5 server?

- A. 22
- B. 23
- C. 81
- D. 122
- E. 123
- F. 443

Answer: A

---

**QUESTION 190:**

You are implementing a DirXML eDirectory driver to synchronize two trees. You've installed a DirXML driver in one tree on a server that has a subordinate reference replica of the partition that contains the objects to be synchronized. Another DirXML driver will be installed in the other tree on a server that has the master replica of the partition that contains the objects to be synchronized. Will this configuration work?

- A. Yes, all DirXML requirements have been met
- B. No, you should never use a master replica on the DirXML server
- C. No, the replica types must be identical in both eDirectory trees
- D. No, DirXML requires a writable replica of the partition containing the objects to be synchronized
- E. No, DirXML should be installed only on a server in tree that will server as the authoritative data source

Answer: A

---

**QUESTION 191:**

You are performing a custom NetWare 6.5 server installation. You have selected Virtual Office to be included in the installation. To have the full functionality of Virtual Office, what other products should you install? (Choose three)

- A. PHP
- B. MySQL
- C. eGuide
- D. iPrint
- E. iFolder
- F. Web Search Server
- G. Novell Script for NetWare (NSN)
- H. Novell exteNd Application Server

Answer: C, D, E

---

**QUESTION 192:**

If you configure Virtual office to use the Logging to File option, where is the resulting log file created?

- A. SYS:\ETC\VO.LOG
- B. SYS:\APACHE\VO\DEBUG.XML
- C. SYS:\TOMCAT\4\LOG\VO.LOG
- D. SYS:\ETC\VIRTUALOFFICE.LOG
- E. SYS:\APACHE\WEBAPPS\NPS\WEB-INF\DEBUG.XML

F. SYS:\TOMCAT\4\WEBAPPS\NPS\WEB-INF\DEBUG.XML

Answer: F

---

**QUESTION 193:**

Distributed File Services uses \_\_\_\_\_, which allows volumes to be joined together such that they appear as subdirectories in one file system.

Answer: JUNCTIONING

---

**QUESTION 194:**

When performing a Default installation of NetWare 6.5, which parameters are configured automatically by the installation program? (Choose two)

- A. Codepage 437
- B. VGA video mode
- C. 4 GB SYS volume
- D. 4 GB DATA volume
- E. basic NetWare File Server patterned deployment

Answer: A, C

---

**QUESTION 195:**

You are planning a consolidation of two NetWare 5.1 servers to a NetWare 6.5 server. You're using a Windows XP Home Workstation with Novell Client 4.9 installed. Each server has the latest Support Pack Installed. Will this consolidation succeed?

- A. Yes, the systems meet all prerequisite requirements
- B. No, you can't consolidate NetWare 5.1 servers to NetWare 6.5
- C. No, the server consolidation utility is not compatible with Windows XP Home
- D. No, the server Consolidation Utility is incompatible with Novell Client version 4.9
- E. No, you must uninstall all Support Packs from the source servers before consolidating them

Answer: C

---

**QUESTION 196:**

After completing a Remote Upgrade to NetWare 6.5 on a server in a multi-server tree, which DSREPAIR operations should you run? (Choose three)

- A. Import Remote Schema

- B. Time Synchronization
- C. Unattended Full Repair
- D. Post NetWare 5 Schema Update
- E. Report Synchronization Status
- F. Designate This Server as the New Master Replica

Answer: B, C, E

---

**QUESTION 197:**

Which are components of the NetWare 6.5 Web and Application Services product?  
(Choose three)

- A. PHP
- B. Rsync
- C. iSCSI
- D. Tomcat
- E. eGuide
- F. IIS Web Server
- G. Apache Web Server 2
- H. Enterprise Web Server

Answer: A, D, G

---

**QUESTION 198:**

When installing products on a NetWare 6.5 server, what does the Apache2 Web Server and Tomcat4 Servlet Container product option do?

- A. Installs an administration instance of Tomcat 4
- B. Installs an administration instance of the Apache Web Server
- C. Installs the Apache Web Server and Tomcat 4 for a dedicated web hosting solution
- D. Installs both a public instance and an administration instance of Apache Web Server and Tomcat 4

Answer: C

---

**QUESTION 199:**

Which IP ports does Remote Manager run on? (Choose two)

- A. 80 (insecure)
- B. 81 (insecure)
- C. 443 (secure)
- D. 2200 (insecure)
- E. 2222 (secure)

- F. 8008 (insecure)
- G. 8009 (secure)

Answer: F, G

---

**QUESTION 200:**

Where is the information entered in the Company info tab displayed in the Virtual Office home page?

- A. In the Notes field
- B. In the company field
- C. Under the about us link
- D. In the company info field
- E. In the company contacts field
- F. In the company press room field
- G. Under the organizational information heading

Answer: D

---

**QUESTION 201:**

You've configured a Branch Office System to use Automatic User Provisioning. When users attempt to log in to the appliance for the first time, authentication fails. The appliance is running on a server with 512 MB of RAM, a Pentium III 500 MHz CPU, and a 40 GB hard disk drive. The users are using Windows 2000 Professional with Novell Client 4.9 installed. What is causing the problem?

- A. The Appliance requires at least 1 GB of RAM
- B. The Appliance requires a 1 GHz or faster CPU
- C. The workstation must be upgraded to Windows XP Home
- D. Novell Client 4.9 isn't compatible with Universal Password
- E. NICI must be disabled on the Novell Client 4.9 during the first login
- F. NMAS must be disabled on the Novell Client 4.9 during the first login

Answer: F

---

**QUESTION 202:**

Which products are installed during a Management Server patterned deployment?  
(Choose three)

- A. iSCSI
- B. OpenSSH
- C. iMonitor
- D. iManager

- E. ConsoleOne
- F. Virtual Office

Answer: C, D, E

---

**QUESTION 203:**

To start the Archive Server, you enter \_\_\_\_\_ at the server console.

Answer: ARKSTART

---

**QUESTION 204:**

Which password does the CIFS service on your NetWare 6.5 server use, by default, to authenticate clients after initial installation?

- A. NIS Password
- B. LDAP Password
- C. Simple Password
- D. Universal password
- E. eDirectory Password

Answer: C

---

**QUESTION 205:**

Which NetWare 6.5 service allows users to find and restore deleted files without help desk support?

- A. iSCSI
- B. DirXML
- C. iFolder
- D. Virtual Office
- E. Archive and Versioning
- F. Nterprise branch office
- G. Novell file access protocols

Answer: E

---

**QUESTION 206:**

You have an NSS pool named VOL1\_POOL. You have taken 4 snapshots of it. What is the default name assigned by NSS to the 4th snapshot of the pool?

- A. VOL1\_POOL4
- B. VOL1\_POOL\_4



- C. VOL1\_POOL\_S4
- D. VOL1\_POOL1234
- E. VOL1\_POOL\_4\_S
- F. VOL1\_POOL\_S\_4

Answer: C

---

**QUESTION 207:**

Which utilities are included in Novell's OpenSSH implementation? (Choose three)

- A. ssh
- B. scp
- C. ftp
- D. sftp
- E. telnet

Answer: A, B, D

---

**QUESTION 208:**

When installing the Branch office appliance software, you are prompted to save the configuration to a diskette that can be used later during the installation of other appliance. If you choose to do so, the configuration parameters are saved in a file name \_\_\_\_\_ on the diskette.

Answer: autoload.nbo