



Exam : 050-890

Title : Advanced Novell Network Management;Netware  
6.5

Ver : 11-10-08

---

**QUESTION 1:**

Which type of SLP agent is always installed on both servers and clients?

- A. Directory Agent
- B. Service Agent
- C. User Agent
- D. SAP Agent
- E. TCP Agent
- F. Compatibility Agent
- G. Client/Server Agent

Answer: C

---

**QUESTION 2:**

You need to change your web server's configuration using a text editor. Where are configuration parameters for the Apache Web Server 2 stored on a NetWare 6.5 server?

- A. SYS:\APACHE2\CONF\NWHTTPD.CONF
- B. SYS:\ETC\APACHE2\HTTPD.CONF
- C. SYS:\ETC\HTTPD.CONF
- D. SYS:\ETC\APACHE.CONF
- E. SYS:\ETC\HTTPD\HTTPD.CONF
- F. SYS:\APACHE2\CONF\APACHE2.CONF
- G. SYS:\APACHE2\CONF\HTTPD.CONF
- H. SYS:\APACHE2\CONF\APACHE.CONF

Answer: G

---

**QUESTION 3:**

Which of the following are true about the Bottom-Up eDirectory upgrade strategy? (Choose 2)

- A. Errors potentially introduced during the upgrade process could propagate throughout the tree.
- B. Errors encountered during the upgrade are less likely to be propagated to the entire tree.
- C. The risk of problems are increased due to replica synchronization issues.
- D. It's relatively easy to plan and organize.
- E. Replica synchronization issues are isolated.

Answer: B,E

---

**QUESTION 4:**

What is the relationship between eDirectory and the Apache 2 Web server when Apache Manager is configured using the Multiple Server Administration model? (Choose 2)

- A. It is used as a database for web-based applications.
- B. It allows configuration parameters to be shared among multiple Apache Web Servers.
- C. It is used to perform reverse lookups on requests coming from outside your domain.
- D. It is used as a repository for Open Source applets, allowing them to be shared concurrently by multiple Apache Web Servers.
- E. It is used as a database for storing Apache configuration parameters.
- F. With partitioning and replication, it is used to provide failover functionality by distributing multiple instances of the same web server among several NetWare 6.5 servers.

Answer: B,E

---

**QUESTION 5:**

Which ACU.INI directive specifies that users will be prompted to begin the ACU.EXE upgrade process?

- A. STATUSLOGGING=YES
- B. DISPLAYDIALOG=YES
- C. CLIENTLOCALINSTALL=YES
- D. LAUNCHINSTALL=YES

Answer: B

---

**QUESTION 6:**

What's the minimum size the DOS partition must be on a server that is to be upgraded to NetWare 6.5?

- A. 500 MB
- B. 100 MB
- C. 200 MB
- D. 50 MB
- E. 400 MB
- F. 300 MB

Answer: A

---

**QUESTION 7:**

Certkiller .com needs to provide web-hosting services for its business partners. Each partner organization needs to use its own domain name. Certkiller .com already has a NetWare 6.5 server in its Demilitarized Zone (DMZ) hosting Certkiller .com's web site using the Apache Web Server 2. To solve this problem, what Apache 2 feature could you implement for each partner organization?

- A. Multi-threading
- B. Virtual domains
- C. Java Server Pages (JSPs)
- D. Virtual hosts
- E. Multi-hosting

Answer: D

---

**QUESTION 8:**

Using the User Access Licensing (UAL) model, a user license is assigned to a user when that user logs in. The license is released from that user after how many days of not logging in?

- A. 90
- B. 7
- C. 1
- D. 30
- E. 365

Answer: A

---

**QUESTION 9:**

What complimentary resources are available online through the Novell web pages? (Choose 3)

- A. Incident-based electronic support
- B. Novell Software Evaluation Library
- C. Product documentation
- D. Product support forums
- E. Limited access to Abend Analysis System

Answer: C,D,E

---

**QUESTION 10:**

Which SLP URL represents a NetWare server's file system?

- A. ndap.novell
- B. nls.meter.novell
- C. bindery.novell
- D. portal.novell
- E. smdr.novell

Answer: C

---

**QUESTION 11:**

Your server object resides in the IS.DEL.DA container and your user objects reside in the CS.DEL.DA container. Where should you install user licenses?

- A. In the Security container
- B. In the CS.DEL.DA container
- C. In the IS.DEL.DA or DEL.DA containers
- D. In the CS.DEL.DA or DEL.DA containers
- E. In the DA container
- F. In any container

Answer: D

---

**QUESTION 12:**

Which tasks do you perform to set up the ACU to update the Novell Client software across the network? (Choose 2)

- A. Place the upgrade files in a directory that all users have access to.
- B. Add a command to launch ACU.EXE to the server's login script.
- C. Run NCIMAN.EXE to create the ACU.BAT file for each workstation.
- D. Copy the client upgrade files to each user's workstation from the Novell Client CD.
- E. Configure the ACU.INI file to specify how you want ACU.EXE to execute.

Answer: A,E

---

**QUESTION 13:**

After a workstation has received DHCPOFFER messages from one or more DHCP servers, which DHCP message is sent by a workstation when it has chosen a DHCP server to obtain an IP address from?

- A. DHCPREQUEST
- B. DHCPINITIALIZE
- C. DHCPDISCOVER
- D. DHCPOFFER
- E. DHCPACK
- F. DHCPTEST

Answer: A

---

**QUESTION 14:**

Which file is used to configure the Apache configuration daemon?

- A. Sys:\Etc\Startup.conf
- B. Sys:\Apache2\Conf\Daemon\Startup.conf
- C. Sys:\Etc\Apache2\Conf\Daemon\Startup.properties
- D. Sys:\Etc\Apache2\Conf\Daemon\Ap2cfg.conf
- E. Sys:\Apache2\Conf\Daemon\Startup.properties
- F. Sys:\Etc\Ap2cfg.conf

Answer: E

---

**QUESTION 15:**

Which are characteristics of a subordinate reference replica? (Choose 2)

- A. It supports authentication.
- B. It can be changed into a read/write replica.
- C. It maintains a list of other replicas.
- D. It supports viewing of objects.
- E. It only contains the partition root object.

Answer: C,E

---

**QUESTION 16:**

Which file can you use to create a customized Remote Manager welcome page?

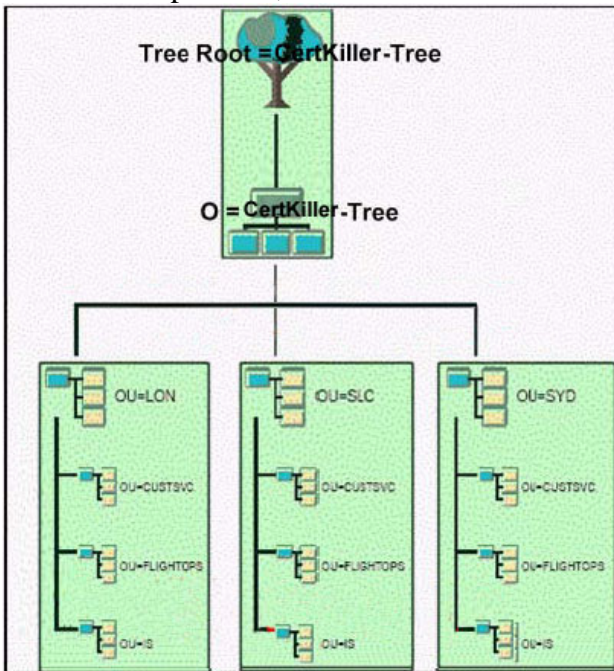
- A. Sys:\System\Welcometxt.htm
- B. Sys:\Etc\Welcome.htm
- C. Sys:\Login\Nrmcfg.htm
- D. Sys:\Etc\Nwnrm.htm
- E. Sys:\Login\Prtlldisc.htm
- F. Sys:\System\NrmWel.htm

Answer: E

---

**QUESTION 17:**

Your eDirectory tree has been partitioned along the boundaries shown in the exhibit. You decide to merge the LON partition with the Certkiller partition. Immediately after you execute the operation, what state are the LON and Certkiller partitions in?



- A. Move
- B. New Replica
- C. On
- D. Join
- E. Dying Replica
- F. Split

Answer: D

---

**QUESTION 18:**

In which container can a trusted root object reside in your eDirectory tree?

- A. NMAS
- B. A trusted root container
- C. [ROOT]
- D. Security
- E. The same container where the server has been installed.
- F. KAP

Answer: B

---

**QUESTION 19:**

You need to change the configuration of your Apache 2 Web server. You know this is done using a configuration file that is read by the web server when it starts up. Which is true regarding the Apache Web Server's HTTPD.CONF file?

- A. It's a binary file that is configured with SET commands.
- B. It's a text file that can be edited only with the Apache Manager web page.
- C. It's a binary file that can be edited only with the Apache Manager web page.
- D. It's a text file that can be edited with Apache Manager or with a text editor.
- E. It's a text file that is configured with SET commands.
- F. It's a binary file that can be edited with Apache Manager or with a binary file editor.

Answer: D

---

**QUESTION 20:**

Which command will enable Transition Tracking System (TTS) on an NSS volume named DATA?

- A. NSS /TRANSACTIONTRACKING=DATA
- B. NSS /TRANSACTION=DATA
- C. TTS
- D. NSS /TTS=DATA
- E. TTS VOLUME=DATA

Answer: B

---

**QUESTION 21:**

Which statements are true regarding eDirectory replicas? (Choose 3)



- A. Information in a replica is contained in a file stored in a hidden directory on volume SYS.
- B. There are 5 types of replicas: master, read/write, read-only, filtered, and subordinate reference.
- C. A replica is required on all servers that exist in the eDirectory tree.
- D. Replicas are required on single or primary reference servers.
- E. Replicas contain eDirectory data for objects within the boundaries of a partition.

Answer: A,B,E

---

**QUESTION 22:**

In which container is the w0 object found in your eDirectory tree?

- A. [ROOT]
- B. Security
- C. The same container where the server has been installed.
- D. NMA
- E. KAP

Answer: E

---

**QUESTION 23:**

You are a regional network administrator remotely upgrading a NetWare 5.1 server to NetWare 6.5. The NetWare 5.1 server has 512 MB of RAM, a 180 GB RAID 5 disk array with a 1 GB DOS partition, and Support Pack 6 installed. Your user object has the Supervisor right to the container where the server resides and the Browse right to the root of the tree. Will the upgrade be successful?

- A. No, you must have the Supervisor right to the root of the tree.
- B. No, the DOS partition is too small.
- C. No, the server doesn't have enough RAM.
- D. No, you can't perform a Remote Upgrade on a NetWare 5.1 server. You must use an In-Place Upgrade.
- E. No, you must first install Support Pack 7 on the NetWare 5.1 server.
- F. No, you can't remotely upgrade a server that uses a RAID disk array.
- G. Yes, the system meets all prerequisite requirements.

Answer: A

---

**QUESTION 24:**

You are planning to remotely upgrade several of your servers to NetWare 6.5. Which Novell product can be installed only after a Remote Upgrade to NetWare 6.5 is complete?

- A. iPrint
- B. NetWare FTP Server
- C. eDirectory 8.7.3
- D. Novell Cluster Services
- E. iFolder
- F. MySQL
- G. Rsync
- H. Apache Web Server 2

Answer: D

---

**QUESTION 25:**

Which command-line switch, when used with the NetWare FTP server NLM load command will enable Anonymous user access and automatically create an Anonymous user?

- A. -a
- B. -anon
- C. /aftp
- D. /anon
- E. /a
- F. -aftp

Answer: A

---

**QUESTION 26:**

In Public Key Cryptography, the \_\_\_\_\_ key is used to decrypt an encrypted transmission.

Answer: PRIVATE

---

**QUESTION 27:**

Your eDirectory tree currently has a NetWare 4.1 server residing in it. You plan to upgrade a NetWare 5.1 server in your tree to NetWare 6.5. What must you do to accomplish this?

- A. Use the Prepare for New eDirectory option in Deployment Manager.
- B. Nothing. The NetWare 6.5 server can co-exist with the NetWare 4.1 server as long as you configure both to use the IPX protocol.
- C. Use the Extend the Core Schema option in Deployment Manager.
- D. Use the Generate GUIDs on NetWare 4 Servers option in Deployment Manager.
- E. Remove the 4.1 server from the tree.
- F. Use the View and Update NDS option in Deployment Manager.

Answer: E

---

### QUESTION 28:

Which time server types participate in voting for the correct time? (Choose 2)

- A. Primary
- B. Secondary
- C. Reference
- D. Master
- E. Single reference
- F. Secondary reference

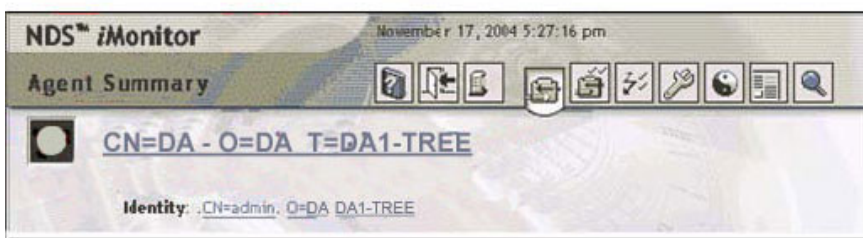
Answer: A,C

---

### QUESTION 29:

#### HOTSPOT

Click on the iMonitor option you would use to run a repair on your eDirectory tree.



Answer:



**QUESTION 30:**

Which NLM acts as a relay agent to forward DHCP requests from one network segment to another?

- A. RELAYAGT.NLM
- B. RELAY.NLM
- C. DHCPRLY.NLM
- D. DHCPSRVR.NLM
- E. BOOTPFWD.NLM
- F. DHCPFWD.NLM

Answer: E

---

**QUESTION 31:**

Which platforms are supported by the NFS component of Native File Access Protocols service on a NetWare 6.5 server? (Choose 2)

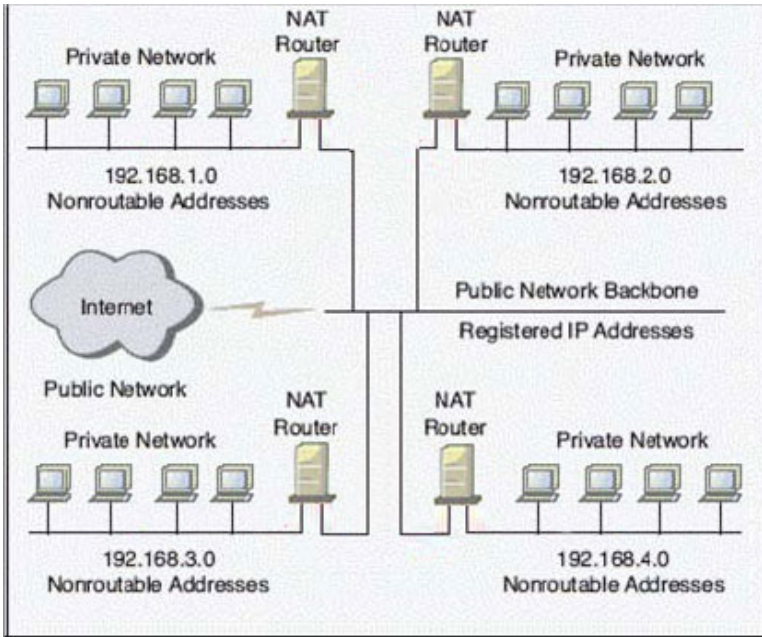
- A. UNIX
- B. Linux
- C. Windows 95
- D. Windows XP
- E. MAC OS X
- F. Windows 2000
- G. MAC OS 8

Answer: A,B

---

**QUESTION 32:**

How many registered IP addresses (minimum) would be required to configure the NAT-routed network shown in the exhibit?



- A. 3
- B. 2
- C. 7
- D. 4
- E. 8
- F. 5
- G. 1
- H. 6

Answer: D

### QUESTION 33:

Certkiller .com is implementing an e-commerce web site where external customers can shop for and purchase products. It's imperative that you establish a secure web site to do this. Which type of certificate authority should you use?

- A. Public Certificate Authority
- B. External Certificate Authority
- C. Integrated Certificate Authority
- D. Internal Certificate Authority

Answer: B

### QUESTION 34:

Which statements are true regarding subordinate reference replicas? (Choose 2)

- A. Subordinate references must reside on every server in the tree.
- B. Subordinate references link a parent partition with its child partition.
- C. Subordinate references can be changed to be a master replica without losing any information.
- D. Subordinate references should be removed to help reduce traffic across the communication channel.
- E. There can be multiple subordinate references per partition.

Answer: B,E

---

**QUESTION 35:**

**HOTSPOT**

Click the iMonitor option you would use to configure a Trace operation.



Answer:



---

**QUESTION 36:**

Which statement is true regarding a primary time server?

- A. It cannot coexist with other primary or reference servers.
- B. It gets its time from a single reference time server.
- C. It does not advertise itself as a time provider.
- D. It polls other reference and primary time servers.

Answer: D

---

**QUESTION 37:**

Which server parameter must be manually specified within the Novell Client

configuration?

- A. DHCP Server
- B. DNS Server
- C. BootP Server
- D. Preferred Server
- E. Primary Server

Answer: D

---

**QUESTION 38:**

You are documenting your network to help save time with future troubleshooting. What documentation is beneficial to maintain? (Choose 3)

- A. A list of current user and file system rights
- B. An illustration detailing the network topology
- C. The baseline performance statistics during after hours network operation
- D. A log of network configuration changes
- E. Network product documentation and support contacts

Answer: B,D,E

---

**QUESTION 39:**

You're installing a new NetWare 6.5 server. You want to use your server to host web-enabled database applications. Which patterned deployment option should you select?

- A. NetWare AMP Server
- B. Virtual Office Server
- C. NetWare Web Search Server
- D. Basic NetWare File Server
- E. Management Server
- F. Apache/Tomcat Server

Answer: A

---

**QUESTION 40:**

Which would be considered a time provider group for a tree that has 15 NetWare 6 servers?

- A. 1 reference time server, 2 primary time servers, and 12 secondary time servers
- B. 1 single reference time server and 14 secondary time servers
- C. 1 single reference time server, 1 primary time server, and 13 secondary time servers
- D. 2 reference time servers and 13 secondary time servers
- E. 1 reference time server, 1 primary time server, and 13 secondary time servers
- F. 2 single reference time servers and 13 secondary time servers

Answer: A

---

### QUESTION 41:

Which switch can be used when loading the DNS service on a NetWare 6.5 server to force a zone transfer to occur?

- A. -u
- B. -zi
- C. -s
- D. -l
- E. -rp
- F. -zt
- G. -z

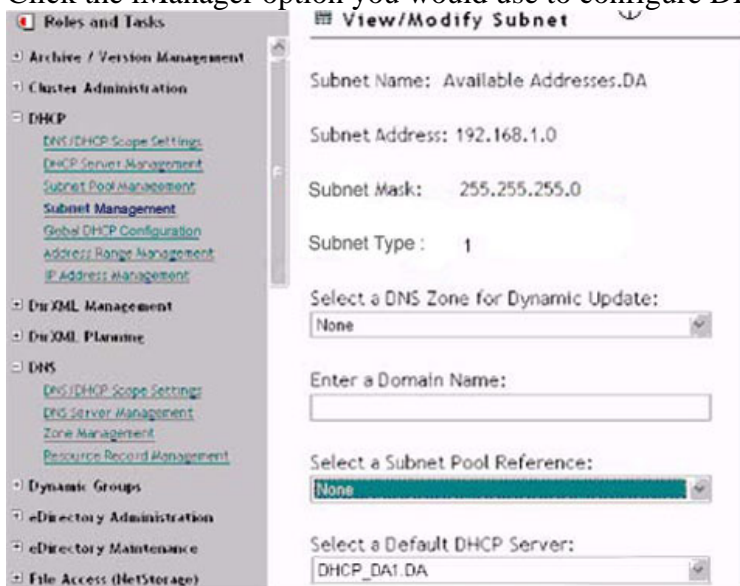
Answer: B

---

### QUESTION 42:

#### HOTSPOT

Click the iManager option you would use to configure DDNS.



**Roles and Tasks**

- Archive / Version Management
- Cluster Administration
- DHCP**
  - DNS/DHCP Scope Settings
  - DHCP Server Management
  - Subnet Pool Management
  - Subnet Management
  - Global DHCP Configuration
  - Address Range Management
  - IP Address Management
- DuXML Management
- DuXML Planning
- DNS**
  - DNS/DHCP Scope Settings
  - DNS Server Management
  - Zone Management
  - Resource Record Management
- Dynamic Groups
- eDirectory Administration
- eDirectory Maintenance
- File Access (NetStorage)

**View/Modify Subnet**

Subnet Name: Available Addresses.DA

Subnet Address: 192.168.1.0

Subnet Mask: 255.255.255.0

Subnet Type: 1

Select a DNS Zone for Dynamic Update:  
None

Enter a Domain Name:  
[Text Field]

Select a Subnet Pool Reference:  
None

Select a Default DHCP Server:  
DHCP\_DA1.DA



Answer:

---

**QUESTION 43:**

Which module should you load to run the Novell Certificate Server?

- A. Csr.nlm
- B. Pki.nlm
- C. Kmo.nlm
- D. Ca.nlm
- E. Ncs.nlm
- F. Pubkey.nlm

Answer: B

---

**QUESTION 44:**

Which NLM acts as a relay agent to forward DHCP requests from one network segment to another?

- A. DHCPFWD.NLM
- B. RELAYAGT.NLM
- C. RELAY.NLM
- D. DHCPSTVR.NLM
- E. DHCPRLY.NLM
- F. BOOTPFWD.NLM

Answer: F

---

**QUESTION 45:**

You are upgrading a NetWare 5.1 server to NetWare 6.5. You've mounted your NetWare 6.5 Operating System CD as a volume on your server and started the Install utility in the server's graphical environment. Which file must you select on the NetWare 6.5 Operating System CD to launch the upgrade?

- A. Product.ni
- B. Upgrade.ips
- C. Product.ips
- D. Nw65prod.ni
- E. Nw65prod.ips
- F. Upgrade.ni

Answer: A

---

**QUESTION 46:**

Which are functions provided by the Service Location Protocol (SLP) on a NetWare 6.5 server? (Choose 2)

- A. Encapsulates SAP packets for IPX hosts on a network.
- B. Detects malformed advertisement packets.
- C. Updates the DNS server instantly with address assignments made by your DHCP server.
- D. Provides client discovery of network services.
- E. Converts registered, public IP addresses into non-registered, private IP addresses.
- F. Dynamically assigns IP addresses to hosts on the network.

Answer: A,D

---

**QUESTION 47:**

Which statements are true regarding secondary time server types? (Choose 2)

- A. They adjust their time 50% to match the established network time.
- B. They can get their time from single reference, reference, primary, and secondary time servers.
- C. They do not participate in voting for time.
- D. They must get their time from a primary server.
- E. By default, they use configured lists to direct them to a server to get time.

Answer: B,C

---

**QUESTION 48:**

Which type of login script is the most efficient method for supplying access to network resources?

- A. Default
- B. Profile
- C. Root
- D. User
- E. Tree
- F. Container

Answer: F

---

**QUESTION 49:**

Which time server type adjusts its clock 50% per polling interval?

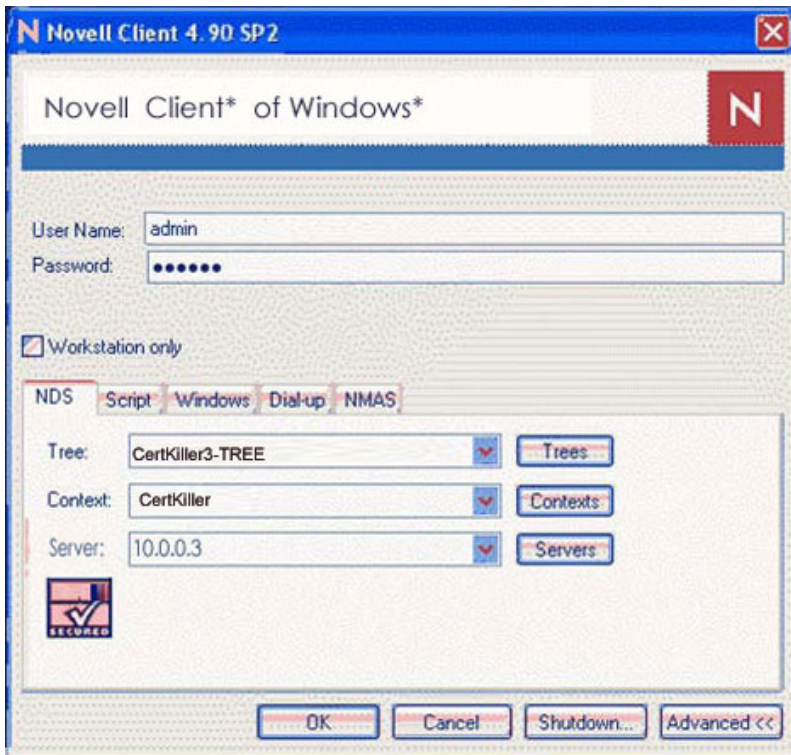
- A. Single reference
- B. Secondary
- C. Reference
- D. Secondary reference
- E. Master
- F. Primary

Answer: F

---

**QUESTION 50:**

You are attempting to authenticate to Certkiller 3-TREE as admin. Certkiller . You want to connect to server Certkiller 3 whose IP address is 10.0.0.3. You've entered the following information in the Novell Client login screen. Will the authentication process be successful?



- A. No, you can't populate the Context and Tree fields if you use an IP address instead of the server name.
- B. Yes, the authentication information has been entered correctly.
- C. No, you can't use an IP address in the Server field.
- D. No, if you use an IP address in the Server field, you can't populate the Context field.
- E. No, you can't populate the Tree field if you use an IP address in the Server field.
- F. No, you must use lower-case characters in the Context field.

Answer: B

### QUESTION 51:

After you install NetWare 6.5, which utility can you use to install License Service Provider (LSP) software on a server and create an LSP object in the eDirectory tree?

- A. ConsoleOne
- B. NWCONFIG.NLM
- C. Server Manager
- D. iManager
- E. iMonitor

Answer: D

### QUESTION 52:

When should an SLP DA be configured? (Choose 2)

- A. When SLPv2 is being used
- B. When a DEFAULT scope exists
- C. When backward compatibility is needed with SLPv1
- D. When environments need to keep SLP network traffic to a minimum
- E. When SLP is running on a large network

Answer: D,E

---

**QUESTION 53:**

Which time server type adjusts its clock 100% per polling interval?

- A. Single reference
- B. Secondary
- C. Primary
- D. Reference
- E. Secondary reference
- F. Master

Answer: B

---

**QUESTION 54:**

You need to manually start the Apache Manager service on your NetWare 6.5 server. Which command is used from the server console to do this?

- A. ADMINWEB
- B. APMANUP
- C. APACHEADM
- D. AP2WEBMANUP
- E. WEBMANUP
- F. NVXADUP
- G. WEBMAN
- H. AP2WEBMAN
- I. AP2MANUP

Answer: H

---

**QUESTION 55:**

What is another name for the server certificate?

- A. WEP key
- B. Key material object
- C. Certificate signing request
- D. Certificate authority

Answer: B

---

**QUESTION 56:**

Deployment Manager fails when run from the NetWare 6.5 Operating System CD on your Windows 2000 Professional workstation with Novell Client 4.83 installed. What is the cause?

- A. You must upgrade to Internet Explorer 6.0 or later on the workstation.
- B. The version of Deployment Manager on the Operating System CD only runs on Windows 95/98 workstations.
- C. Deployment Manager is not compatible with Novell Client 4.83.
- D. Deployment Manager requires Windows XP Home edition.
- E. Deployment Manager is not compatible with Windows 2000 Professional.
- F. Deployment Manager must be installed on the workstation before running the program.

Answer: C

---

**QUESTION 57:**

When preparing a server for an upgrade to NetWare 6.5, which tasks should you perform? (Choose 3)

- A. Make a backup of the eDirectory tree and the server file system.
- B. Ensure all applications hosted by the server are up and running during the upgrade so they will be detected by the upgrade utility.
- C. Disconnect all users and disable user login.
- D. Remove (uninstall) all Support Packs and patches.
- E. If running ZENworks for Servers 2, install ZENworks for Servers 3 prior to the upgrade.
- F. Use a partition management tool to shrink the server's DOS partition to the minimum size required by NetWare 6.5.

Answer: A,C,E

---

**QUESTION 58:**

Which utilities can you use to configure SET parameters on your NetWare 6.5 server?  
(Choose 2.)

- A. CONFIG
- B. Remote Manager
- C. INETCFG
- D. iMonitor
- E. iManager
- F. MONITOR.NLM

Answer: B,F

---

**QUESTION 59:**

In which container are the SSL CertificateDNS, SSL CertificateIP, and SAS Service objects found in your eDirectory tree?

- A. NMAS
- B. The same container where the server has been installed.
- C. KAP
- D. [ROOT]
- E. Security

Answer: B

---

**QUESTION 60:**

Which statement is true regarding the server your License Service Provider (LSP) service is installed on?

- A. It must be installed on a server that holds a master replica of the [Root] partition.
- B. It must be installed on a server that holds a master or read/write replica of every partition in the tree.
- C. It must be installed on a server that holds a master or read/write replica of the [Root] partition.
- D. It must be installed on a server that holds a master or read/write replica of each partition that contains license certificate objects.
- E. It must be installed on a server that holds a master or read/write replica of the partition that contains the security container.

Answer: D

---

**QUESTION 61:**

**CORRECT TEXT**

During a server \_\_\_\_\_, you first install a generic NetWare 6.5 server. You then move the eDirectory tree and the file system from your existing server to the newly installed NetWare 6.5 server.

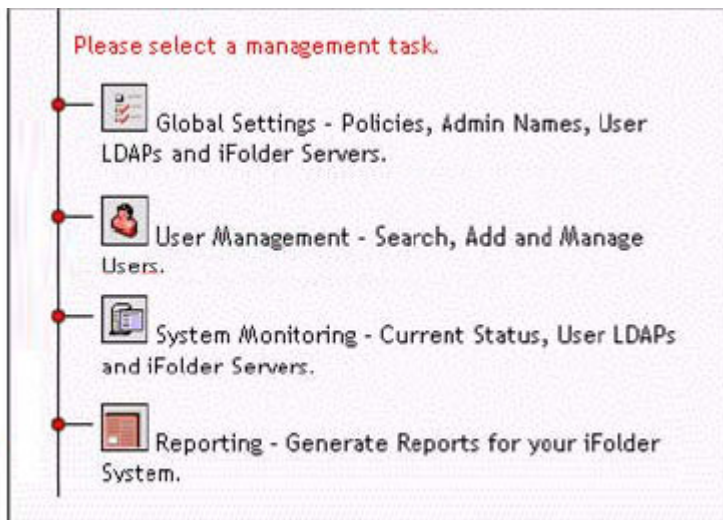
Answer: MIGRATION

---

**QUESTION 62:**

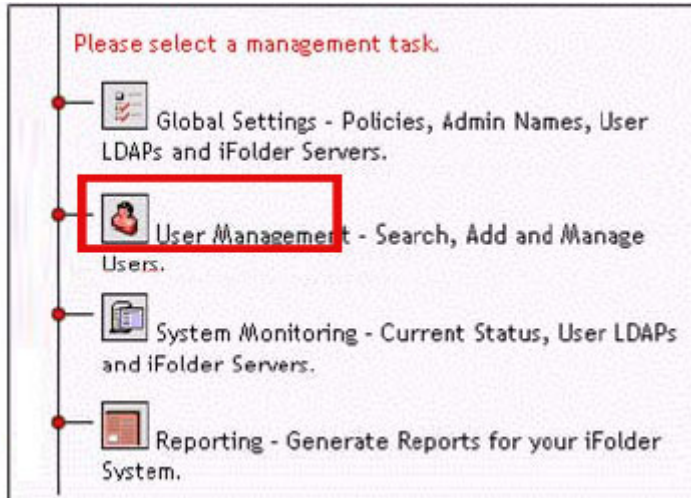
**HOTSPOT**

Click the Server Management Console management task you would use to recover a forgotten pass phrase.





Answer:



---

**QUESTION 63:**

You've just completed a Remote Upgrade to NetWare 6.5 on 4 servers (FS1, FS2, FS3, and FS4) in your tree. Your tree has two partitions. FS1 has a master replica of each partition. FS2 has a read/write replica of each partition. FS3 and FS4 each have a filtered replica of the second partition which allows only user objects to be replicated. Which servers need to have an Unattended Full Repair run on them as part of the post-upgrade process?

- A. FS2, FS3, and FS4
- B. FS1, FS2, and FS3
- C. FS4
- D. FS1, FS2, FS3, and FS4
- E. FS3 and FS4
- F. FS1 and FS2
- G. FS1

Answer: D

---

**QUESTION 64:**

**HOTSPOT**

You need to create an LDIF file that will create a new Organization object in your tree named Users. You've created the LDIF file shown in the figure; however, when you try to import it, the process fails and the object isn't created. Click on the part of the file that is causing the error to occur.

```
dn: o=Users
changetype: moddn
o: Users
objectClass: organization
objectClass: ndsLoginProperties
objectClass: ndsContainerLoginProperties
objectClass: top
ACL: 2#entry#o=Users#loginScript
ACL: 2#entry#o=Users#printJobConfiguration
```

Answer:

```
dn: o=Users
changetype: moddn
o: Users
objectClass: organization
objectClass: ndsLoginProperties
objectClass: ndsContainerLoginProperties
objectClass: top
ACL: 2#entry#o=Users#loginScript
ACL: 2#entry#o=Users#printJobConfiguration
```

---

### QUESTION 65:

Which activities are appropriate to help you be better prepared for recurring network problems? (Choose 3)

- A. Remove unnecessary components.
- B. Maintain an updated network map.
- C. Open an electronic incident with Novell support.
- D. Perform regular network health checks.
- E. Keep documentation available for reference.

Answer: B,D,E

---

### QUESTION 66:

You want to upgrade a NetWare 6 server that is currently running in your test lab to NetWare 6.5. You also want to deploy it as a production server in a high-utilization environment. The server hardware uses dual Pentium IV 2.5 GHz CPUs, 512 MB RAM, a 300 GB RAID 5 drive array, and a USB mouse. Does this server hardware meet the recommended requirements for a production server?

- A. No, you should use 3.0 GHz (or faster) CPUs in a NetWare 6.5 production server.
- B. No, NetWare 6.5 doesn't support USB mice.
- C. No, the server should have at least 1 GB of RAM.
- D. No, the server should have at least 8 CPUs to run in a production environment.
- E. No, NetWare 6.5 isn't compatible with RAID arrays.
- F. No, NetWare 6.5 isn't compatible with Pentium IV processors.
- G. Yes, the server meets all recommended requirements.

Answer: C

---

**QUESTION 67:**

Which command performs a read-only assessment of the NSS pool named APPSPOOL?

- A. NSS /CHECKPOOL APPSPOOL
- B. NSS /REBUILD APPSPOOL
- C. NSS /POOLVERIFY=APPSPOOL
- D. NSS /CHECK /POOL=APPSPOOL
- E. NSS /VERIFY APPSPOOL

Answer: C

---

**QUESTION 68:**

Which utility lets you change a server from being a secondary time server to a single reference time server?

- A. TIMESYNC.NLM
- B. MONITOR.NLM
- C. NDS Manager
- D. NetWare Administrator

Answer: B

---

**QUESTION 69:**

What happens if you select the View and Update NDS option in Deployment Manager?

- A. Copies a new version of DS.NLM and SGUID.NLM to NetWare 4 servers in the tree.
- B. Locates servers that are running incompatible versions of Directory Services and removes them from the tree.
- C. Runs SDIDIAG.NLM to check your tree's SDI key for consistency.
- D. Upgrades older versions of NDS in the tree to eDirectory 8.7.3.
- E. Places a Read/Write replica of the root partition on all existing servers in the tree.
- F. Patches existing servers in the tree to a revision level compatible with the version of eDirectory used by NetWare 6.5.

Answer: F

---

**QUESTION 70:**

Which file is used to specify the context where CIFS users reside in the tree?

- A. Sys:\Etc\Ctxs.cfg
- B. Sys:\System\Ctxs.cfg
- C. Sys:\Public\Ctxs.cfg
- D. Sys:\Etc\Cifsctxs.cfg
- E. Sys:\System\Cifsctxs.cfg
- F. Sys:\Public\Cifsctxs.cfg

Answer: D

---

**QUESTION 71:**

When using Novell Certificate Server, where is the public key component of public key cryptography created?

- A. On the eDirectory server with the master of the tree root
- B. On the workstation or server preparing an encrypted message
- C. On the workstation or server owning the key
- D. On the Certificate Authority server

Answer: D

---

**QUESTION 72:**

Your eDirectory tree currently has a NetWare 4.2 server residing in it. You plan to upgrade a NetWare 5.1 server in your tree to NetWare 6.5. What must you do to accomplish this?

- A. Remove the NetWare 4.2 server from the tree.
- B. Implement Universal Password before upgrading to NetWare 6.5.
- C. Run the Compatibility Mode Driver on the NetWare 5.1 server.
- D. Run Deployment Manager and select the Update Certificate Authority Objects option.
- E. Run Deployment Manager and select the Prepare for CIFS/AFP option.
- F. Run Deployment Manager and select the Generate GUIDs on NetWare 4 Servers option.

Answer: F

---

**QUESTION 73:**

Which is an example of the single reference time synchronization method for a network that has 15 NetWare 6 servers?

- A. 2 single reference time servers and 13 secondary time servers
- B. 1 reference time server, 2 primary time servers, and 12 secondary time servers
- C. 1 primary time server and 14 secondary time servers
- D. 1 single reference time server, 1 primary time server, and 13 secondary time servers
- E. 2 primary time servers and 13 secondary time servers
- F. 1 single reference time server and 14 secondary time servers

Answer: F

---

**QUESTION 74:**

In Public Key Cryptography, the\_\_\_\_\_ key is used to decrypt an encrypted transmission.

Answer: PRIVATE

---

**QUESTION 75:**

Which SLP URL represents a NetWare server's file system?

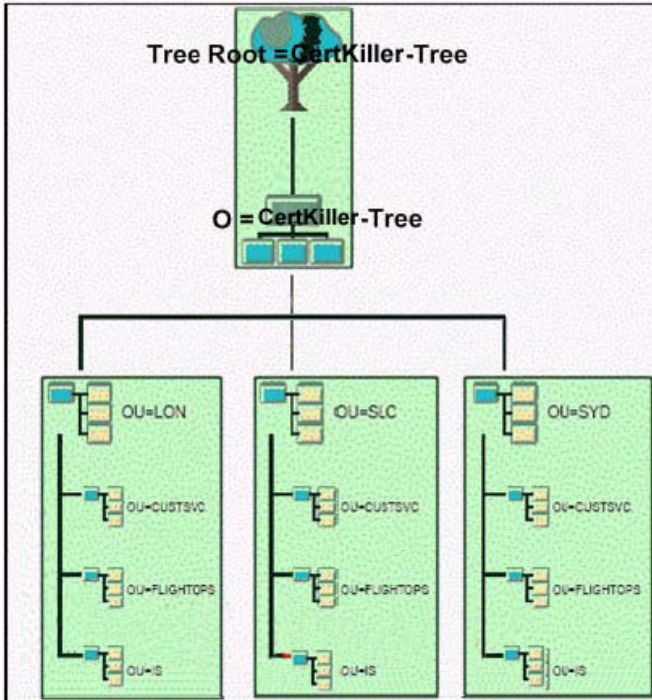
- A. bindery.novell
- B. portal.novell
- C. nls.meter.novell
- D. smdr.novell
- E. ndap.novell

Answer: A

---

**QUESTION 76:**

Your eDirectory tree has been partitioned along the boundaries shown in the exhibit. You decide to create a new partition on the IS organizational unit in the SYD container. Immediately after you execute the operation, what state is the SYD partition in?



- A. Split
- B. Join
- C. On
- D. Move
- E. New Replica
- F. Dying Replica

Answer: A

#### QUESTION 77:

Akiko Tanaka changed departments. You updated ATanaka's user object to reflect her new phone number. What is sent to the other replicas of this partition regarding this change?

- A. The phone number only
- B. The required fields of the user object
- C. The entire partition
- D. The container where the ATanaka object resides
- E. The ATanaka user object

Answer: A

#### QUESTION 78:

Which activities are appropriate to help you be better prepared for recurring network problems? (Choose 3)

- A. Open an electronic incident with Novell support.
- B. Keep documentation available for reference.
- C. Remove unnecessary components.
- D. Maintain an updated network map.
- E. Perform regular network health checks.

Answer: B,D,E

---

**QUESTION 79:**

When configuring DDNS, which object identifies the IP addresses available for dynamic assignment?

- A. DHCP Server object
- B. Subnet Pool object
- C. DNS-DHCP Locator object
- D. Subnet Address Range object

Answer: D

---

**QUESTION 80:**

Which SLP Agent maintains only a list of services available on the server where it is running?

- A. Application Agent
- B. Service Agent
- C. Directory Agent
- D. DNS Agent
- E. LDAP Agent
- F. User Agent

Answer: B

---

**QUESTION 81:**

Before starting a NetWare 6.5 upgrade, the user performing the upgrade should verify they have what rights? (Choose 3)

- A. Supervisor rights to the server hosting the CA

- B. Supervisor rights at the container where the server will be installed
- C. Read and Write rights to all servers holding a replica of the partition where the new server will be installed
- D. Browse rights to the Security container
- E. Supervisor rights to the Root of the eDirectory tree
- F. Supervisor rights to the Admin object

Answer: B,D,E

---

**QUESTION 82:**

Which platforms are supported by the AFP component of the NFAP service on a NetWare 6.5 server? (Choose 2)

- A. MAC OS 8
- B. Windows 2000
- C. MAC OS X
- D. Linux
- E. Windows 95
- F. Windows XP
- G. UNIX

Answer: A,C

---

**QUESTION 83:**

When you are configuring DHCP, which object lets you assign multiple subnet objects to service DHCP requests?

- A. DHCP Server object
- B. DNS-DHCP Locator object
- C. Subnet Pool object
- D. Subnet Address Range object

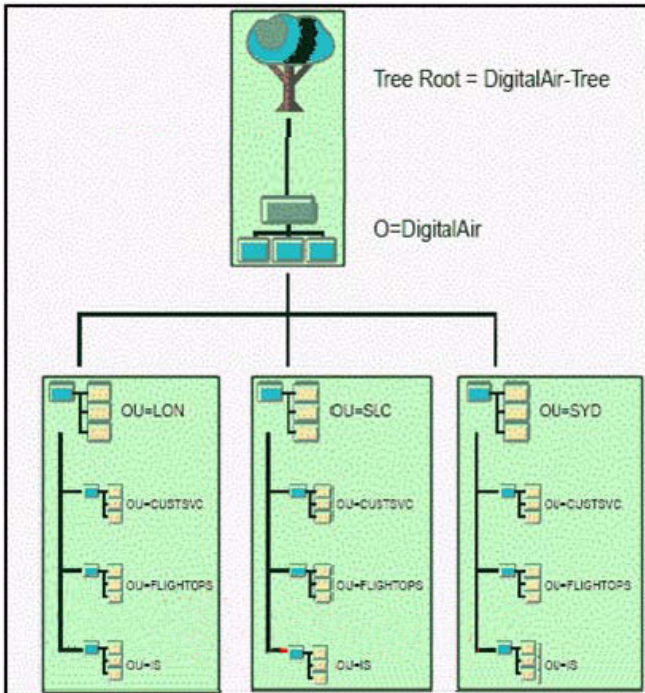
Answer: C

---

**QUESTION 84:**

Given the eDirectory tree shown in the exhibit, which uses the correct LDAP syntax to reference the IS.SLC.DigitalAir container? (Choose 2.)





- A. is.slc.digitalair
- B. ,ou=is,ou=slc,o=digitalair
- C. .ou=IS,ou=SLC,o=DigitalAir
- D. ou=IS,ou=SLC,o=DigitalAir
- E. ou=is,ou=slc,o=digitalair
- F. .ou=IS.ou=SLC.o=DigitalAir
- G. is,slc,digitalair
- H. ou=is,ou=slc.o=digitalair

Answer: D,E

#### QUESTION 85:

CORRECT TEXT

In Public Key Cryptography, the \_\_\_\_\_ key is kept secure by the key owner.

Answer: PRIVATE

#### QUESTION 86:

NAT provides protection at the \_\_\_\_\_ layer of the OSI model.

- A. Network
- B. Physical
- C. Session
- D. Data Link

Answer: A

---

**QUESTION 87:**

Which statements are true regarding the master replica? (Choose 2)

- A. It only contains the partition root object.
- B. It controls partition boundary changes.
- C. It supports authentication.
- D. It cannot be created by the network administrator.
- E. There can be multiple master replicas per partition.

Answer: B,C

---

**QUESTION 88:**

When troubleshooting a network problem, what is a beneficial initial step to try prior to developing a detailed problem hypothesis based on network information?

- A. Determine the network's baseline performance.
- B. Check for and eliminate user error.
- C. Verify you are using the latest diagnostic and troubleshooting equipment.
- D. Monitor the network traffic.

Answer: B

---

**QUESTION 89:**

Which are functions provided by the Service Location Protocol (SLP) on a NetWare 6.5 server? (Choose 2)

- A. Converts registered, public IP addresses into non-registered, private IP addresses.
- B. Provides client discovery of network services.
- C. Updates the DNS server instantly with address assignments made by your DHCP server.
- D. Dynamically assigns IP addresses to hosts on the network.
- E. Detects malformed advertisement packets.
- F. Encapsulates SAP packets for IPX hosts on a network.

Answer: B,F

---

**QUESTION 90:**

You want to upgrade a NetWare 6 server that is currently running in your test lab to NetWare 6.5. You also want to deploy it as a production server in a high-utilization environment. The server hardware uses dual Pentium IV 2.5 GHz CPUs, 512 MB RAM, a 300 GB RAID 5 drive array, and a USB mouse. Does this server hardware meet the recommended requirements for a production server?

- A. No, the server should have at least 8 CPUs to run in a production environment.
- B. No, you should use 3.0 GHz (or faster) CPUs in a NetWare 6.5 production server.
- C. Yes, the server meets all recommended requirements.
- D. No, NetWare 6.5 isn't compatible with Pentium IV processors.
- E. No, NetWare 6.5 doesn't support USB mice.
- F. No, the server should have at least 1 GB of RAM.
- G. No, NetWare 6.5 isn't compatible with RAID arrays.

Answer: F

---

**QUESTION 91:**

Which replica or replicas contain a complete copy of all object information of a partition?

- A. Master and read/write
- B. Master, read/write, read-only, and subordinate reference
- C. Master
- D. Master, read/write, and read-only
- E. Master and read-only

Answer: D

---

**QUESTION 92:**

Which eDirectory upgrade strategy dictates that you first upgrade non-critical servers that reside at lower levels in the tree?

- A. Lateral Upgrade
- B. Roll-Up Upgrade
- C. Remote Upgrade
- D. Top-Down Upgrade
- E. Indirect Upgrade
- F. Bottom-Up Upgrade

Answer: F

---

**QUESTION 93:**

How do you perform a Down-Server Upgrade?

- A. Boot the server from the NetWare 6.5 Operating System CD and manually execute INSTALL.BAT with the /UPGRADE switch.
- B. Copy the NetWare 6.5 Operating System CD files to another server, then select Novell > Install to begin the upgrade.
- C. Use NetWare Deployment Manager to complete the upgrade from a workstation.
- D. Use iManager 2.0 or later to complete the upgrade from a workstation.
- E. Use iMonitor to perform a Top-Down upgrade from a workstation.
- F. Mount the NetWare 6.5 Operating System CD, then select Novell > Install to begin the upgrade.

Answer: A

---

**QUESTION 94:**

CORRECT TEXT

Your NetWare 6.5 server's IP address is 10.0.0.3. To access Remote Manager on your server, what URL would you use?

Answer: HTTP://10.0.0.3:8008

Answer: HTTPS://10.0.0.3:8009

---

**QUESTION 95:**

What complimentary resources are available online through the Novell web pages?  
(Choose 3)

- A. Novell Software Evaluation Library
- B. Limited access to Abend Analysis System
- C. Product documentation
- D. Product support forums
- E. Incident-based electronic support

Answer: B,C,D

---

**QUESTION 96:**

Which statements are true regarding eDirectory replicas? (Choose 2)

- A. There are 3 types of replicas: master, read/write, and subordinate reference.
- B. Replicas contain Directory data for objects within the boundaries of a partition.
- C. A replica is required on all servers that exist in the eDirectory tree.
- D. Replicas are stored in files contained in a hidden directory on volume SYS.
- E. Replicas are required on single or primary reference servers.

Answer: B,D

---

**QUESTION 97:**

In which container is the organizational CA object found in your eDirectory tree?

- A. The same container where the server has been installed.
- B. KAP
- C. [ROOT]
- D. Security
- E. NMA5

Answer: D

---

**QUESTION 98:**

Your network consists of 3 NetWare servers: Certkiller 3, Certkiller 7, and DA10. Certkiller 3 and Certkiller 7 are NetWare 6.5 servers. DA10 is a NetWare 6 server. You are experiencing problems with the eDirectory database on server Certkiller 3. You decide to use iMonitor to run a repair in Unattended Mode to fix the problem. You access iMonitor from server Certkiller 7 and run a repair operation in this mode. After the repair is complete, the problems still persist on Certkiller 3. You used Internet Explorer 6 from a Windows XP workstation to access iMonitor. Why did the repair operation fail?

- A. iMonitor isn't compatible with Internet Explorer version 6.
- B. iMonitor should have been run in Advanced mode with the Report Move Objects option selected.
- C. iMonitor only repairs the eDirectory database on the server where it's being run from.
- D. iMonitor should have been run in Advanced mode with the Repair Network Addresses option selected.
- E. iMonitor won't repair an eDirectory tree that contains mixed server versions.

Answer: C

---

**QUESTION 99:**

Which tasks must you always perform when implementing DHCP? (Choose 3)

- A. Configure an address range
- B. Create a DHCP server
- C. Import a DHCP configuration
- D. Create a Zone object
- E. Configure a NAT router
- F. Export the DHCP configuration
- G. Create a subnet
- H. Create the BOOTP.MDB file

Answer: A,B,G

---

**QUESTION 100:**

What are the benefits of using the single reference time method? (Choose 2)

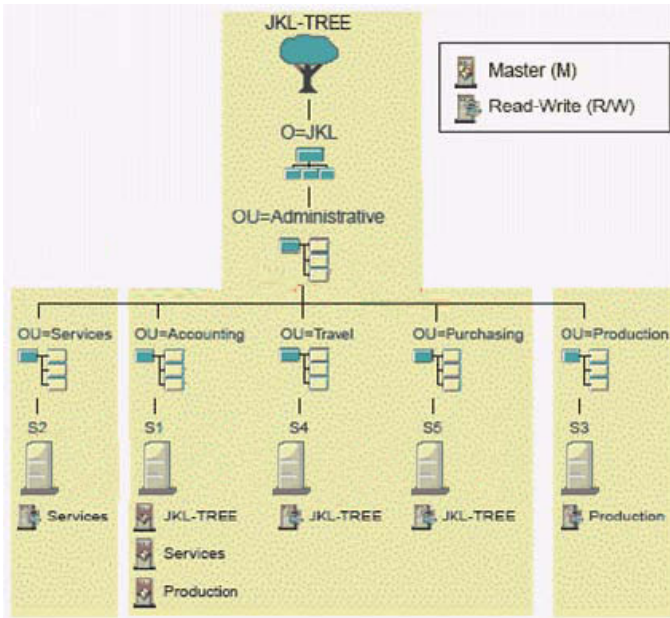
- A. It is the most efficient method when there are many sites connected by WAN links.
- B. It does not require configured sources.
- C. It does not use SLP or SAP.
- D. It does not require changing the TIMSYNC.CFG file.
- E. It does not require time synchronization to be reconfigured when a new server is installed into the tree.

Answer: B,E

---

**QUESTION 101:**

Given the partition and replication table shown in the exhibit, on which servers would subordinate reference replicas for the Services partition be automatically placed?



- A. S2
- B. S3, S4, and S5
- C. S1 and S2
- D. S1 and S4
- E. S2, S5, and S4
- F. S3
- G. S3 and S5
- H. S4 and S5

Answer: H

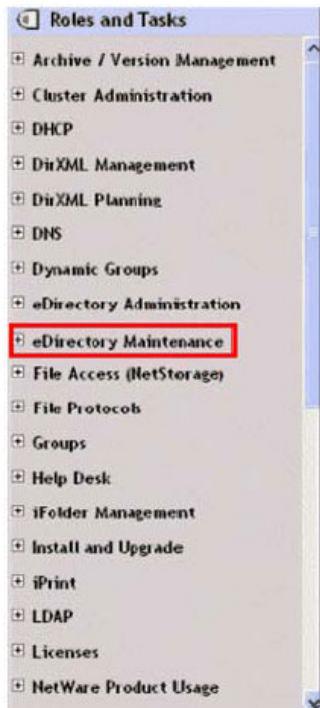
## QUESTION 102:

### HOTSPOT

Which iManager role would you use to import an LDIF file?



Answer:



---

### QUESTION 103:

You've just completed a Remote Upgrade to NetWare 6.5 on a NetWare 5.1 server. The server you upgraded resides in a multi-server tree. Which DSREPAIR operations should you run on the upgraded server? (Choose 3)



- A. Report Synchronization Status
- B. Repair Time Stamps and Declare a New Epoch
- C. Post NetWare 5 Schema Update
- D. Time Synchronization
- E. Delete Unknown Leaf Objects
- F. Import Remote Schema
- G. Unattended Full Repair
- H. Designate This Server as the New Master Replica

Answer: A,D,G

---

**QUESTION 104:**

Click the iManager task you would use to restore a deleted NSS volume.



Answer:



**QUESTION 105:**

Which statements are true regarding the VERIFY and REBUILD commands? (Choose 2)

- A. Run REBUILD before running VERIFY.
- B. REBUILD and VREPAIR are equivalent utilities.
- C. Deactivate storage pools before you run REBUILD.
- D. Volumes do not need to be dismounted when running the VERIFY command.
- E. Only use REBUILD as a last resort to recover the file system.

Answer: C,E

---

**QUESTION 106:**

CORRECT TEXT

In Public Key Cryptography, the \_\_\_\_\_ key is used to decrypt an encrypted transmission.

Answer: PRIVATE

---

**QUESTION 107:**

Which statement about time stamps is true?

- A. Time stamps propagate the correct time throughout the network.
- B. Time stamps allow single reference time servers to synchronize with primary servers.
- C. Time stamps allow changes made within files to be processed in correct order.
- D. Time stamps allow changes made in the eDirectory database to be processed in sequential order.
- E. Time stamps are packets sent to and from the dedicated time source.

Answer: D

---

**QUESTION 108:**

What does the Allow Forward References option in the eDirectory Import Convert Export Wizard do?

- A. Creates a placeholder in the tree when a record to add an entry comes before the record to add the entry's parent object.
- B. Stores passwords specified in the LDIF file as simple passwords in the objects created.
- C. Configures the import process so that entries in the LDIF file are processed in the

order they appear.

D. Configures the import process to use LDAP version 2.

E. Causes the source handler to parse the import file, but does not send any records to the import engine or the destination handler.

Answer: A

---

### QUESTION 109:

Which DHCP message is first sent by a workstation when it needs to obtain an IP address from a DHCP server?

A. DHCP OFFER

B. DHCP DISCOVER

C. DHCP ACK

D. DHCP REQUEST

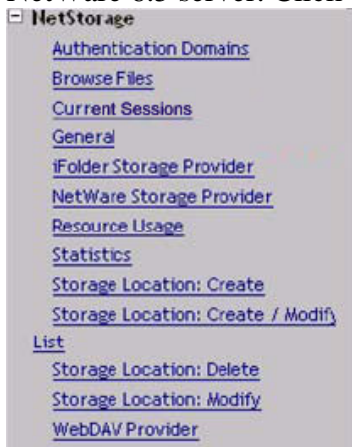
Answer: B

---

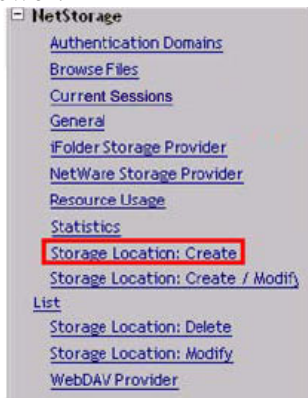
### QUESTION 110:

#### HOTSPOT

You want to give your NetStorage users access to the Data:\Shared directory on your NetWare 6.5 server. Click the iManager task you would use to do this.



Answer:



---

### QUESTION 111:

Which replica type contains only the partition root object?

- A. Master
- B. Read/write
- C. Subordinate reference
- D. Read-only

Answer: C

---

### QUESTION 112:

Which tool do you use to configure NAT?

- A. iMonitor
- B. Novell iManager
- C. Web Manager
- D. INETCFG.NLM
- E. ConsoleOne
- F. NATCFG.NLM

Answer: D

---

### QUESTION 113:

Which are characteristics of a read/write replica? (Choose 2)

- A. It can control object changes.
- B. It can be used on a server where bindery services is required.
- C. It cannot be created by the network administrator.

D. It can control partition boundary changes.

Answer: A,B

---

**QUESTION 114:**

You just deleted the DATA volume from your NetWare 6.5 server. You realize that this was a mistake and you need to restore it. By default, how long do you have before the volume is automatically purged?

- A. 96 hours
- B. It's too late, the volume has been purged. You must recreate it and restore data from a back up device.
- C. 72 hours
- D. 48 hours
- E. 12 hours
- F. 36 hours

Answer: A

---

**QUESTION 115:**

NetWare 6.5 can automatically self-tune which resources? (Choose 2)

- A. Licensing services
- B. Directory cache buffers
- C. Error handling
- D. SLP
- E. NSS buffers
- F. Service processes

Answer: B,F

---

**QUESTION 116:**

You're installing products on your NetWare 6.5 server. What does the Apache2 Web Server and Tomcat 4 Servlet Container product option do?

- A. Installs an administration instance of Tomcat 4.
- B. Installs both a public instance and an administration instance of Apache Web Server and Tomcat 4.
- C. Installs an administration instance of the Apache Web Server.
- D. Installs an administration instance of both the Apache Web Server and Tomcat 4.

E. Installs the Apache Web Server and Tomcat 4 for dedicated web hosting.

Answer: E

---

**QUESTION 117:**

Which password does the CIFS service on your NetWare 6.5 server use, by default, to authenticate clients after initial installation of the operating system ?

- A. eDirectory Password
- B. NIS Password
- C. Universal Password
- D. LDAP Password
- E. Simple Password

Answer: E

---

**QUESTION 118:**

Which of the following terms refers to the amount of data that might not be successfully synchronized to all replicas in the ring?

- A. External Reference
- B. Maximum Ring Delta
- C. Errors
- D. Obituary
- E. Last Successful Sync

Answer: B

---

**QUESTION 119:**

What's the minimum size the DOS partition must be on a server that is to be upgraded to NetWare 6.5?

- A. 200 MB
- B. 400 MB
- C. 300 MB
- D. 500 MB
- E. 50 MB
- F. 100 MB

Answer: D

---

**QUESTION 120:**

Which switch can be used when loading Vcu.nlm to automatically remove the original volume after the upgrade process is complete?

- A. /rem
- B. /d
- C. /r
- D. /e
- E. /z

Answer: B

---

**QUESTION 121:**

Which Role-Based Services object is a container object in the eDirectory tree that holds all RBS Role and Module objects?

- A. rbsCollection
- B. rbsRole
- C. rbsScope
- D. rbsBook
- E. rbsModule

Answer: A

---

**QUESTION 122:**

Which NLMs must you load to run the Remote Manager service? (Choose 2)

- A. Rman.nlm
- B. Portal.nlm
- C. Remote.nlm
- D. Remoteman.nlm
- E. Httpstk.nlm
- F. Nrm.nlm

Answer: B,E

---

**QUESTION 123:**

Some users have been assigned a user license, but they log into the network infrequently. You need to release the licenses from these users so regular users can have the licenses assigned to them. Which utility do you use to release licenses from users?

- A. iMonitor
- B. Remote Manager
- C. NWCONFIG.NLM
- D. Server Manager
- E. iManager

Answer: E

---

**QUESTION 124:**

In the most recent version of NSS, which tools can be used to create NSS logical volumes? (Choose 3.)

- A. INSTALL
- B. NSSMU
- C. iManager
- D. Remote Manager
- E. ConsoleOne
- F. NWCONFIG
- G. iMonitor
- H. MONITOR

Answer: B,C,D

---

**QUESTION 125:**

Which parameter allows you to set the location in your eDirectory tree where user accounts exist, allowing older versions of the Novell Client that aren't directory-aware to authenticate to the server?

- A. Bindery Context
- B. NetWare 3 Emulation Mode
- C. Preferred Server
- D. Compatibility Mode Driver
- E. Emulation Context
- F. User Context
- G. Primary Server

Answer: A

---



**QUESTION 126:**

Which repair process in iMonitor produces a copy of the local eDirectory database on the server which can be used for backup or troubleshooting?

- A. Disable Reference Checking
- B. Run in Unattended Mode
- C. Create DIB Archive
- D. Repair Single Object
- E. Repair Replica
- F. Repair Local DIB

Answer: C

---

**QUESTION 127:**

A secondary server is not synchronized to a single reference time server. During the next polling process, what percent of the time difference does the secondary time server adjust?

- A. A secondary server doesn't adjust its clock
- B. 100%
- C. 50%
- D. 16%
- E. 1%
- F. 75%
- G. 25%

Answer: B

---

**QUESTION 128:**

By default, which statement is true regarding the UAL licensing model in NetWare 6.5?

- A. NDPS printers use a user or connection license.
- B. A different license is required for each NetWare 6.5 server that a user authenticates to.
- C. The search for the license starts at the user's context and goes up the tree.
- D. The license is released from the user immediately when the user logs out.

Answer: C

---

**QUESTION 129:**

Given that your workstation's CD drive is assigned drive letter E, which is the correct file name and location for the NetWare 6.5 Deployment Manager executable?

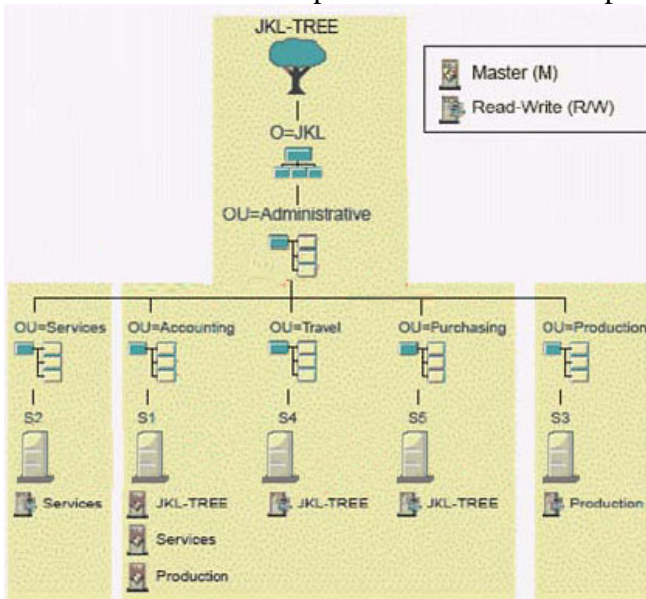
- A. E:\Nwdeploy.exe
- B. E:\Nwdeploy65.exe
- C. E:\Tools\Nwdeploy.exe
- D. E:\Products\Nwdeploy.exe
- E. E:\Install\Nwdeploy.exe
- F. E:\Install\Nwdeploy.exe

Answer: A

---

**QUESTION 130:**

Given the partition and replication table shown in the exhibit, on which servers would subordinate reference replicas for the Services partition be automatically placed?



- A. S3
- B. S1 and S4
- C. S1 and S2
- D. S3, S4, and S5
- E. S4 and S5
- F. S2
- G. S2, S5, and S4
- H. S3 and S5

Answer: E

**QUESTION 131:**

What happens to a NetWare 5.1 server's Enterprise Web Server when you upgrade the server to NetWare 6.5?

- A. It's removed. All associated configuration parameters and web server data are lost.
- B. It is used to provide NetWare 6.5 web services instead of Apache Web Server.
- C. It is reconfigured to use a secondary IP address.
- D. It is removed and its configuration parameters are migrated to the Apache Web Server's configuration file.
- E. It is reconfigured to use IP ports 81 and 444.

Answer: D

---

**QUESTION 132:**

What are advantages of using configured lists for time synchronization? (Choose 2)

- A. Allows single reference and primary time servers to reside in the same tree
- B. Allows servers to be synchronized in a mixed IP/IPX environment
- C. Reduces network SLP and SAP traffic
- D. Allows you to specify which time server a server should contact
- E. Easier to implement and manage than using SLP and SAP

Answer: C,D

---

**QUESTION 133:**

Which DHCP object is a container object that holds IP address configuration information?

- A. IP Address object
- B. Subnet Pool object
- C. DHCP Server object
- D. DHCP Subnet object

Answer: D

---

**QUESTION 134:**

Which utilities can be used to remotely upgrade an existing NetWare server to NetWare 6.5? (Choose 2)

- A. Deployment Manager
- B. ConsoleOne
- C. Server Management Utility
- D. iMonitor
- E. iManager
- F. Remote Manager
- G. NetWare Administrator

Answer: A,E

---

**QUESTION 135:**

You have users in the ACCT.SLC.DA container and in the MKT.LON.DA container. The Server object resides in the IS.SLC.DA container. Where should you install user licenses so users in both containers can use them?

- A. In the LON.DA container
- B. In the ACCT.SLC.DA container or the IS.SLC.DA container
- C. In the DA container
- D. In the IS.SLC.DA container
- E. In the SLC.DA container

Answer: C

---

**QUESTION 136:**

Which statements are true about eDirectory partitions? (Choose 2)

- A. A partition contains only eDirectory objects and related data.
- B. A partition provides fault tolerance for the file system.
- C. Partitions are logical divisions of eDirectory that enable the database to be divided among several servers.
- D. Partitions can overlap each other.
- E. A container object can reside in 2 partitions.

Answer: A,C

---

**QUESTION 137:**

You are upgrading a NetWare 6.0 server to NetWare 6.5. What command should you use to mount the NetWare 6.5 Operating System CD as a volume on your NetWare 6.0 server?

- A. LOAD CD9660.NLM
- B. CD MOUNT ALL
- C. LOAD NTFS.NLM
- D. MOUNT -T ISO9660
- E. LOAD NTFS.NSS
- F. LOAD ISO9660.NLM
- G. LOAD CDROM.NSS
- H. LOAD CD9660.NSS
- I. LOAD ISO9660.NSS

Answer: H

---

**QUESTION 138:**

What are advantages of using configured lists for time synchronization? (Choose 2)

- A. Allows servers to be synchronized in a mixed IP/IPX environment
- B. Easier to implement and manage than using SLP and SAP
- C. Reduces network SLP and SAP traffic
- D. Allows you to specify which time server a server should contact
- E. Allows single reference and primary time servers to reside in the same tree

Answer: C,D

---

**QUESTION 139:**

Which is a place holder in the eDirectory tree that contains information about entries the local server does not hold?

- A. Error index
- B. Subordinate reference
- C. Differential link
- D. Obituary
- E. External reference

Answer: E

---

**QUESTION 140:**

Which are basic components of Public Key Cryptography? (Choose 2)

- A. Shared keys

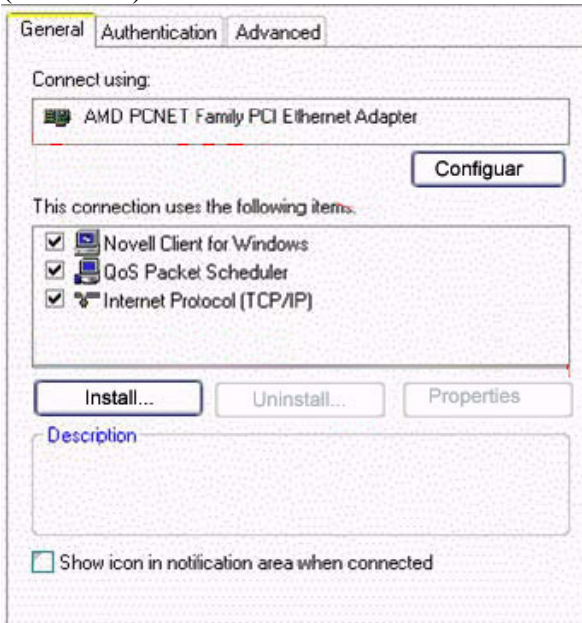
- B. WEP
- C. Public key
- D. SSL
- E. Key material publisher
- F. Certificate authority

Answer: C,F

---

**QUESTION 141:**

You are trying to map a network drive from a Windows XP Professional workstation to a CIFS share on your NetWare 6.5 server, but are unable to access the share. Given the Local Area Connection Properties configuration shown, why can't you access the share? (Choose 2)



- A. The Client for Microsoft Networks is missing
- B. The QoS Packet Scheduler service must be uninstalled
- C. The IPX/SPX protocol is missing
- D. The Novell Client for Windows must be configured to support CIFS shares.
- E. The Novell Client for Windows must be uninstalled
- F. The Service Advertisement Protocol is missing
- G. The File and Printer Sharing for Microsoft Networks service is missing

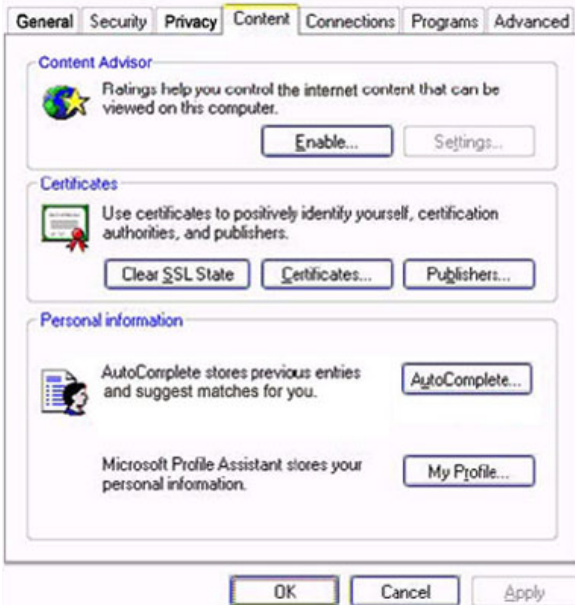
Answer: A,G

---

**QUESTION 142:**

HOTSPOT

Click the option you would use to add a trusted Certificate Authority to Internet Explorer's list of trusted CAs.



Answer:



---

**QUESTION 143:**

Which are functions provided by the Service Location Protocol (SLP) on a NetWare 6.5 server? (Choose 2)

A. Updates the DNS server instantly with address assignments made by your DHCP server.

- B. Encapsulates SAP packets for IPX hosts on a network.
- C. Provides client discovery of network services.
- D. Converts registered, public IP addresses into non-registered, private IP addresses.
- E. Dynamically assigns IP addresses to hosts on the network.
- F. Detects malformed advertisement packets.

Answer: B,C

---

**QUESTION 144:**

Your server object resides in the IS.DEL.DA container and your user objects reside in the CS.DEL.DA container. In which container should the server license be installed?

- A. In any container
- B. In the IS.DEL.DA or DEL.DA containers
- C. In the CS.DEL.DA or DEL.DA containers
- D. In the Security container
- E. In the IS.DEL.DA container
- F. In the CS.DEL.DA container
- G. In the DA container

Answer: E

---

**QUESTION 145:**

What is used to adjust different time zones to get an equivalent time for time synchronization?

- A. Universal Time Coordinated (UTC)
- B. Time stamps
- C. Standard time
- D. Daylight saving time offset
- E. Greenwich Mean Time (GMT)

Answer: A

---

**QUESTION 146:**

You are a regional network administrator remotely upgrading a NetWare 5.1 server to NetWare 6.5. The NetWare 5.1 server has 512 MB of RAM, a 180 GB RAID 5 disk array with a 1 GB DOS partition, and Support Pack 6 installed. Your user object has the Supervisor right to the container where the server resides and the Browse right to the root of the tree. Will the upgrade be successful?



- A. No, you must have the Supervisor right to the root of the tree.
- B. No, the server doesn't have enough RAM.
- C. No, you must first install Support Pack 7 on the NetWare 5.1 server.
- D. No, you can't perform a Remote Upgrade on a NetWare 5.1 server. You must use an In-Place Upgrade.
- E. No, the DOS partition is too small.
- F. No, you can't remotely upgrade a server that uses a RAID disk array.
- G. Yes, the system meets all prerequisite requirements.

Answer: A

---

**QUESTION 147:**

**HOTSPOT**

Click the iManager task you would use to restore a deleted NSS volume.



Answer:

---

**QUESTION 148:**

**CORRECT TEXT**

In NetWare 6.5 you can configure all services running on the server to use a common password called \_\_\_\_\_.

Answer: UNIVERSALPASSWORD

---

**QUESTION 149:**

Which NLM acts as a relay agent to forward DHCP requests from one network segment

to another?

- A. DHCPFWD.NLM
- B. DHCPRLY.NLM
- C. RELAY.NLM
- D. BOOTPFWD.NLM
- E. DHCPSTVR.NLM
- F. RELAYAGT.NLM

Answer: D

---

**QUESTION 150:**

In a time provider group, which server carries the most weight when voting on a time?

- A. Master
- B. Single reference
- C. Secondary
- D. Reference
- E. Primary

Answer: D

---

**QUESTION 151:**

Where is DNS zone data stored in Novell's DNS implementation?

- A. In the DFS Management Context
- B. Locally in both primary and secondary name servers' file system
- C. In the local MySQL database
- D. Locally in each secondary name server's file system
- E. Locally in the primary name server's file system
- F. In a distributed VLDB database
- G. In eDirectory

Answer: G

---

**QUESTION 152:**

NAT provides protection at the \_\_\_\_\_ layer of the OSI model.

- A. Network
- B. Physical

- C. Session
- D. Data Link

Answer: B

---

**QUESTION 153:**

Which statement is true when installing licensing certificates in your eDirectory tree?

- A. A license cannot be installed in more than one container unless you have a licensing agreement.
- B. User license certificates must reside in the same container as the server object.
- C. Users in different contexts cannot use the same license certificate.
- D. Server licenses should reside in a parent container common to all server objects.

Answer: A

---

**QUESTION 154:**

Which scripting languages are supported by the NetWare 6.5 Web and Application Services? (Choose 3)

- A. Novell ScriptPages (NSP)
- B. C++
- C. Universal Component System (UCS)
- D. OpenScript
- E. Novell WebScript
- F. PHP
- G. Active Server Pages (ASP)

Answer: A,C,F

---

**QUESTION 155:**

Which activities are appropriate to help you be better prepared for recurring network problems? (Choose 3)

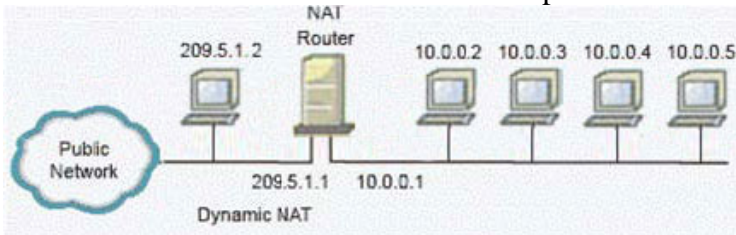
- A. Open an electronic incident with Novell support.
- B. Maintain an updated network map.
- C. Keep documentation available for reference.
- D. Remove unnecessary components.
- E. Perform regular network health checks.

Answer: B,C,E

---

**QUESTION 156:**

You've configured your NetWare 6.5 server to function as a Dynamic NAT router between two network segments, as shown in the exhibit. The workstations on the private segment are running Windows 2000. The workstations on the public segment are running Windows XP. A user on the public segment whose IP address is 209.5.1.2 wants to access a shared folder on a workstation installed on the private segment whose IP address is 10.0.0.2. Will the user be able to accomplish this?



- A. Yes, Dynamic NAT routing allows bi-directional shared folder access between segments.
- B. No, you must issue the SET ALLOW DYNAMIC PASSTHRU=ON command on the server first.
- C. No, Dynamic NAT doesn't allow hosts on the public segment to access hosts on the private segment.
- D. No, Dynamic NAT doesn't support Windows shared folders.
- E. No, Dynamic NAT isn't supported by Windows 2000 systems.

Answer: C

---

**QUESTION 157:**

**HOTSPOT**

You've created a Storage Location object that points to the Data:\Shared directory on your NetWare 6.5 server. Now you need to specify which users in the eDirectory tree are allowed to access the Storage Location. Click the iManager task you would use to do this.



Answer:



---

## QUESTION 158:

### HOTSPOT

You need to manage your web server configuration from within a web browser using Apache Manager. Click on the option you would use to access this utility.

**Novell NetWare® 6.5**  
Administration

**End User Software**

- Novell eDirectory 8.7
- eGuide 2.1
- iFolder
- iPrint
- NetStorage
- Virtual Office
- Web Search 3.0

**Open Source**

**Network Management**

**Server Management**

**J2EE / Web Services**

### Welcome to NetWare® 6.5

NET SERVICES SOLUTION FROM NOVELL

Congratulations on successfully installing NetWare® 6.5. NetWare 6.5 adds tremendous value to your company's ability to communicate over your network. When you need to extend the reach of your intranet to the Internet, NetWare 6.5 provides nonstop access, Net-ready security, and high availability.

← In the navigation area, explore the powerful capabilities offered in NetWare 6.5 including End User Software, Open Source, Network Management, Server Management, J2EE / Web Services, and other Novell Services.

**Default Page**

Replace the NetWare 6.5 welcome page with another page by selecting from the pages below. Only installed products will be available.

Answer:

**Novell NetWare® 6.5**  
Administration

**End User Software**

- Novell eDirectory 8.7
- eGuide 2.1
- iFolder
- iPrint
- NetStorage
- Virtual Office
- Web Search 3.0

**Open Source**

**Network Management**

**Server Management**

**J2EE / Web Services**

### Welcome to NetWare® 6.5

NET SERVICES SOLUTION FROM NOVELL

Congratulations on successfully installing NetWare® 6.5. NetWare 6.5 adds tremendous value to your company's ability to communicate over your network. When you need to extend the reach of your intranet to the Internet, NetWare 6.5 provides nonstop access, Net-ready security, and high availability.

← In the navigation area, explore the powerful capabilities offered in NetWare 6.5 including End User Software, Open Source, Network Management, Server Management, J2EE / Web Services, and other Novell Services.

**Default Page**

Replace the NetWare 6.5 welcome page with another page by selecting from the pages below. Only installed products will be available.

## QUESTION 159:

You want to enable File Snapshot for all of the NSS volumes on your server. Which command will do this?

- A. NSS /FileCopyOnWriteSnapshot=all
- B. NSS /FileSnapshot=all
- C. NSS /FileCopyOnWriteSnapshot=on
- D. NSS /FileSnapshot=on

Answer: A

---

**QUESTION 160:**

Which statements about using both SLP and configured lists for time synchronization are true? (Choose 2)

- A. Time doesn't synchronize if both SLP and configured lists are used.
- B. Using both provides fault tolerance for time synchronization.
- C. Using both allows IP and IPX servers to synchronize with each other.
- D. Using both adds extra traffic on the network.
- E. Using both shortens the amount of time it takes to synchronize time throughout the network.

Answer: B,D

---

**QUESTION 161:**

**HOTSPOT**

Click on the iManager role you would use to run a report of NetWare licenses in use.



Answer:



---

**QUESTION 162:**

What is the default life span for public key certificates?

- A. Public key certificates never expire.
- B. 2 months
- C. 1 week
- D. 24 hours
- E. 1 year
- F. 2 years
- G. 5 years

Answer: F

---

**QUESTION 163:**

You're mapping a drive to a NetWare 6.5 server. What type of eDirectory connection must be established?

- A. Bindery
- B. Connected but not logged in
- C. Authenticated and licensed
- D. Authenticated

Answer: C

---

**QUESTION 164:**



The Novell Client for Windows NT, 2000, and XP is integrated with which standard Windows components? (Choose 4)

- A. Network Neighborhood
- B. System Tray
- C. Recent Documents
- D. My Documents
- E. Control Panel
- F. Favorites
- G. Windows Explorer
- H. My Computer

Answer: A,B,G,H

---

**QUESTION 165:**

**HOTSPOT**

Click the Server Management Console management task you would use to remove an iFolder account.



Answer:



---

**QUESTION 166:**

Which part of your eDirectory tree should contain the fewest partitions?

- A. The top
- B. Directly beneath the first level of organizational unit objects.
- C. The bottom
- D. Directly above the first level of organizational unit objects.

Answer: A

---

**QUESTION 167:**

What is the top-most container called in all eDirectory partitions?

- A. Parent
- B. Root
- C. Reference
- D. Master
- E. Partition root

Answer: E

---

**QUESTION 168:**

What is the maximum recommended number of child partitions per parent partition?

- A. 128

- B. 256
- C. 64
- D. 8
- E. 78
- F. 16
- G. 150
- H. 100

Answer: G

---

**QUESTION 169:**

Which are true regarding replica placement in the eDirectory tree? (Choose 2)

- A. There should be at least 3 replicas of each partition.
- B. The maximum number of replicas allowed per server is 25.
- C. There should be a replica of the tree root partition on each server in the tree.
- D. Subordinate references are automatically put in place by eDirectory and can be used for fault tolerance.
- E. The maximum number of replicas allowed per partition is 50.

Answer: A,E

---

**QUESTION 170:**

You need to fill out a replica table. Which tools can you use to get replica ring information? (Choose 3)

- A. iMonitor
- B. DSREPAIR
- C. NWCONFIG
- D. ConsoleOne
- E. NetWare Administrator
- F. MONITOR

Answer: A,B,D

---

**QUESTION 171:**

Which operating system uses a version of NDS that is incompatible with NetWare 6.5 and, therefore, can't reside in the same tree as a NetWare 6.5 server?

- A. NetWare 4.1

- B. NetWare 4.2
- C. NetWare 5.0
- D. NetWare 3.1
- E. NetWare 3.2
- F. NetWare 4.11
- G. NetWare 6.0
- H. NetWare 5.5

Answer: A

---

**QUESTION 172:**

How do you perform an In-Place Upgrade?

- A. Mount the NetWare 6.5 Operating System CD; then select Novell > Install to begin the upgrade.
- B. Use iManager 2.0 or later to complete the upgrade from a workstation.
- C. Use NetWare Deployment Manager to complete the upgrade from a workstation.
- D. Use iMonitor to complete the upgrade from a workstation.
- E. Boot the server from the NetWare 6.5 Operating System CD and manually execute INSTALL.BAT.
- F. Boot the server from the NetWare 6.5 Operating System CD and manually execute INSTALL.BAT with the /UPGRADE switch.

Answer: A

---

**QUESTION 173:**

You have just run the REBUILD command on an NSS pool named DATA\_POOL. Which file does REBUILD copy errors and transactions to, and where is that file located?

- A. VOLUME.NSS, located at the root of DATA
- B. DATA\_POOL.NSS, located at the root of SYS
- C. DATA\_POOL.RLF, located at the root of DATA
- D. DATA\_POOL.NSS, located at the root of DATA
- E. DATA\_POOL.RLF, located at the root of SYS

Answer: E

---

**QUESTION 174:**

When attempting an In-Place Upgrade on a NetWare 5.1 server with Support Pack 3, the upgrade process fails. What is the cause?

- A. You can't use an In-Place Upgrade on a NetWare 5.1 server; you must perform a Down-Server Upgrade.
- B. You must apply Support Pack 4 or later to upgrade a NetWare 5.1 server to NetWare 6.5
- C. NetWare 5.1 servers can't be upgraded; you must use the Migration Wizard.
- D. You can't use an In-Place Upgrade on a NetWare 5.1 Server; you must perform a Remote Upgrade.
- E. You must apply Support Pack 6 or later to upgrade a NetWare 5.1 server to NetWare 6.5.

Answer: E

---

**QUESTION 175:**

You want to upgrade a NetWare 6 server with Support Pack 2 to NetWare 6.5. The server hardware uses a Pentium III 500 MHz Celeron CPU, 512 MB RAM, an 8 GB hard disk drive with a 200 MB DOS partition, and a USB mouse. Can this server be upgraded?

- A. No, NetWare 6.5 requires a PIII 750 MHz CPU or later.
- B. No, the server's CPU is too slow and the hard disk drive is too small.
- C. No, the server doesn't have enough RAM and must have Support Pack 3 or later applied.
- D. No, the server's DOS partition is too small and USB mice aren't supported.
- E. Yes, the server meets all prerequisite requirements.
- F. No, NetWare 6.5 isn't compatible with Celeron processors.
- G. No, the server's DOS partition is too small and must have Support Pack 3 or later applied.

Answer: G

---

**QUESTION 176:**

You're configuring an SLP Directory Agent on your NetWare 6.5 server. You want to statically configure your server to communicate with another Directory Agent whose IP address is 10.0.0.4. This server resides on a different network segment than your server. Which of the following is the correct command to enter in the SLP.CFG file to accomplish this?

- A. DA IPV4, 10.0.0.4
- B. SLPDA IPV4, 10.0.0.4
- C. SLPDA=10.0.0.4
- D. DA IPV4 10.0.0.4
- E. DA=10.0.0.4
- F. SLPDA IPV4 10.0.0.4

Answer: A

---

**QUESTION 177:**

**HOTSPOT**

Click the parameter you would use to configure the DNS zone to receive zone updates from a master DNS server.

View/Modify Zone

Selected DNS Zone: da.com

Select the Zone Type:

☒ Primary

☐ Secondary

Enter the Zone Master IP Address:

Available DNS Server(s):

Selected Authoritative DNS Server(s): DNS\_DA1.DA

Buttons: Add, Remove, Add All, Remove All

Specify Designated Primary DNS Server: DNS\_DA1.DA

Answer:

View/Modify Zone

Selected DNS Zone: da.com

Select the Zone Type:

☒ Primary

☐ Secondary

Enter the Zone Master IP Address:

Available DNS Server(s):

Selected Authoritative DNS Server(s): DNS\_DA1.DA

Buttons: Add, Remove, Add All, Remove All

Specify Designated Primary DNS Server: DNS\_DA1.DA

---

**QUESTION 178:**

Which are components of the NetWare 6.5 Web and Application Services? (Choose 3)

- A. iSCSI
- B. Apache Web Server 2
- C. PHP
- D. IIS Web Server
- E. Rsync
- F. Novel NetStorage
- G. Novell FTP Server
- H. Enterprise Web Server
- I. Tomcat
- J. eGuide

Answer: B,C,I

---

**QUESTION 179:**

**HOTSPOT**

Click the Point-and-Click button to begin. You need to download the latest NetWare 6.5 Support Pack to solve a network problem. Click the link on the web page displayed that will allow you to get this file.



Answer:



---

**QUESTION 180:**

Which part of your eDirectory tree should contain the fewest partitions?

- A. The top
- B. Directly above the first level of organizational unit objects.
- C. Directly beneath the first level of organizational unit objects.
- D. The bottom

Answer: A

---

**QUESTION 181:**

In your tree, you deployed Universal Password. Your users now can't log in from their Windows 98 Second Edition workstations using the Novell Client 3.2. What is the resolution to the problem? (Choose 3)

- A. Upgrade the workstations to Windows XP Home or Professional.
- B. Upgrade the workstations to Windows 2000 Professional.
- C. Install Client NCI 2.6 or later.
- D. Deploy the Novell Client 3.4 on the workstations.
- E. Configure each user object with a Simple Password.
- F. Install NMASS Client 2.2 or later.
- G. Deploy the Novell Client 4.83 on the workstations.

Answer: C,D,F

---

**QUESTION 182:**

You are documenting your network to help save time with future troubleshooting. What information is beneficial to document? (Choose 3)

- A. A chronological log of software upgrades and hardware changes
- B. A diagram of the network cabling
- C. A list of current user and file system rights
- D. The configuration and type of each workstation
- E. The performance statistics during poor network operation

Answer: A,B,D

---

**QUESTION 183:**

You recently completed a Remote Upgrade to NetWare 6.5 on a server located in Certkiller .com's Baltimore, MD. office. You realize that you forgot to install MySQL on the server during the upgrade. Which NetWare utilities can you use to remotely install



this product? (Choose 2)

- A. NetWare GUI Install utility using Remote Manager
- B. iManager
- C. Deployment Manager
- D. NetWare Administrator
- E. ConsoleOne
- F. iMonitor

Answer: A,C

---

**QUESTION 184:**

Which eDirectory upgrade strategy dictates that you first upgrade the server that holds the master replica of the root partition?

- A. Roll-Forward Upgrade
- B. Direct Upgrade
- C. Lateral Upgrade
- D. Top-Down Upgrade
- E. Remote Upgrade
- F. Bottom-Up Upgrade

Answer: D

---

**QUESTION 185:**

A single reference server has the time of 03:10:08 and a secondary server in the same tree has the time of 03:10:16. What is the secondary server's time changed to after the first polling interval?

- A. 03:10:16
- B. 03:10:14
- C. 03:10:08
- D. 03:10:12
- E. 03:10:10

Answer: C

---

**QUESTION 186:**

**HOTSPOT**

You need to temporarily unload DHCP SRVR.NLM on your server. Click the Remote

Manager option you would use to do this.



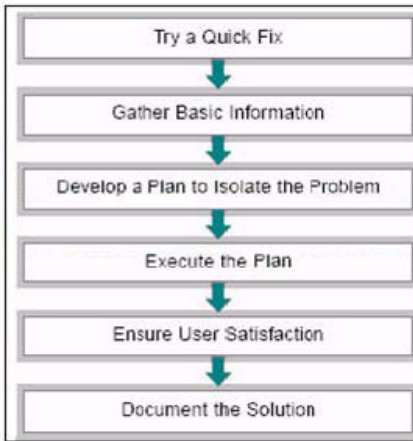
Answer:



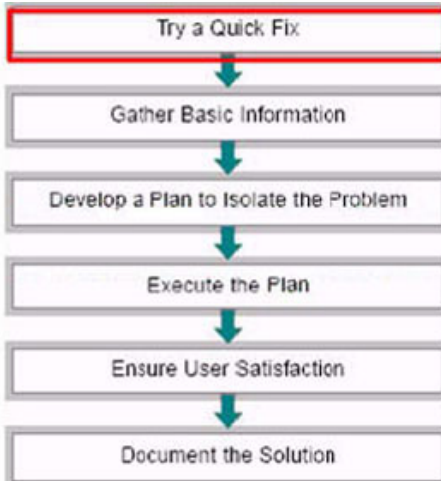
**QUESTION 187:**

## HOTSPOT

Click on the step in the 6-step troubleshooting model where you check for error conditions such as unplugged power cords or network cabling.



Answer:



---

### QUESTION 188:

Which object lets you see what server a user license is assigned to?

- A. The license unit object
- B. The license service provider object
- C. The license certificate object
- D. The license container object
- E. The server object that you think the MLA license was assigned to

Answer: C

---

### QUESTION 189:

Which is the main component of the Novell Client 4.9?

- A. NDIS
- B. Nwgina.dll
- C. Nwfs.sys
- D. ODI
- E. Lsl.com
- F. Ipxodi.nlm

Answer: C

---

**QUESTION 190:**

Which protocol is the CIFS implementation in NetWare 6.5 based on?

- A. Network File System
- B. Apple File Protocol
- C. Server Message Block
- D. Sequenced Packet Exchange
- E. Internetwork Packet Exchange

Answer: C

---

**QUESTION 191:**

Which modules implement TCP/IP in NetWare 6.5? (Choose 3)

- A. BSDSOCK.NLM
- B. TCPIPODI.NLM
- C. IPXODI.NLM
- D. IP.NLM
- E. TCPIP.NLM
- F. TCPSRV.R.NLM
- G. SLPSAP.NLM
- H. TCP.NLM

Answer: A,E,H