

**Actualtests.com**

The Power of Knowing



Exam : 050-888

Title : Upgrading to netware

Ver : 11.10.08

---

**QUESTION 1:**

Which are components of the DirXML Engine? (Choose 2.)

- A. Subscriber Filter
- B. DirXML Driver
- C. Publisher Filter
- D. Join Engine
- E. eDirectory Interface

Answer: D,E

---

**QUESTION 2:**

Which NetWare 6.5 service allows you to centrally manage remote file system data and user provisioning?

- A. Nterprise Branch Office
- B. iSCSI
- C. Virtual Office
- D. DirXML
- E. Novell File Access Protocols
- F. Archive and Versioning
- G. iFolder

Answer: A

---

**QUESTION 3:**

Which are components of the NetWare 6.5 Web and Application Services product? (Choose 3.)

- A. Rsync
- B. IIS Web Server
- C. Tomcat
- D. eGuide
- E. Apache Web Server 2
- F. PHP
- G. iSCSI
- H. Enterprise Web Server

Answer: C,E,F

---

**QUESTION 4:**

You've configured a Branch Office system to use Automatic User Provisioning. When users attempt to log in to the Appliance for the first time, authentication fails. The Appliance is running on a server with 512 MB of RAM, a Pentium III 500 MHz CPU, and a 40 GB hard disk drive. The users are using Windows 2000 Professional with Novell Client 4.9 installed. What is causing the problem?

- A. NMA\$ must be disabled on the Novell Client 4.9 during the first login.
- B. The workstation must be upgraded to Windows XP Home.
- C. Novell Client 4.9 isn't compatible with Universal Password.
- D. The Appliance requires a 1 GHz or faster CPU.
- E. The Appliance requires at least 1 GB of RAM.
- F. NCI must be disabled on the Novell Client 4.9 during the first login.

Answer: A

---

**QUESTION 5:**

How do you perform an In-Place Upgrade?

- A. Mount the NetWare 6.5 Operating System CD; then select Novell > Install to begin the upgrade.
- B. Boot the server from the NetWare 6.5 Operating System CD and manually execute INSTALL.BAT with the /UPGRADE switch.
- C. Use iManager 2.0 or later to complete the upgrade from a workstation.
- D. Use NetWare Deployment Manager to complete the upgrade from a workstation.

Answer: A

---

**QUESTION 6:**

CORRECT TEXT

Files larger than \_\_\_\_\_ GB can't be replicated with Rsync.

Answer: TWO

---

**QUESTION 7:**

You're installing a new NetWare 6.5 server. The hardware you are using has dual PIII 1.13 GHz CPUs, 384 MB of RAM, and a 40 GB SCSI SCA hard disk drive. Will the installation be successful?

- A. No, NetWare 6.5 requires an 80 GB or larger hard disk drive.
- B. No, NetWare 6.5 doesn't support SCSI SCA hard disk drives.
- C. No, NetWare 6.5 requires 512 MB or more RAM.

- D. No, NetWare 6.5 doesn't support multiprocessor systems.
- E. Yes, the hardware meets all prerequisite requirements.

Answer: C

---

**QUESTION 8:**

**CORRECT TEXT**

While installing the Branch Office Appliance software, you are prompted to save the configuration to a diskette that can be used later during the installation of other Appliances. If you choose to do so, the configuration parameters are saved in a file named \_\_\_\_\_ on the diskette.

Answer: AUTOLOAD.NBO

---

**QUESTION 9:**

You are implementing a DirXML eDirectory driver to synchronize two trees. You've installed a DirXML driver in one tree on a server that has a subordinate reference replica of the partition that contains the objects to be synchronized. Another DirXML driver will be installed in the other tree on a server that has the master replica of the partition that contains the objects to be synchronized. Will this configuration work?

- A. No, DirXML requires a writable replica of the partition containing the objects to be synchronized.
- B. No, the replica types must be identical in both eDirectory trees.
- C. No, you should never use a master replica on the DirXML server.
- D. No, DirXML should be installed only on a server in tree that will server as the authoritative data source.
- E. Yes, all DirXML requirements have been met.

Answer: A

---

**QUESTION 10:**

To balance the load in your network, you want to split heavily used volume DATA, an NSS volume, on DA1. You decide to split the volume at the DATA:\USERS\CONTRACTORS subdirectory. The destination volume is an NSS volume on DA2. Given that both servers are NetWare 6.5 servers in the same DFS Management context, can this be done?

- A. No, the servers must reside in different DFS Management Contexts.
- B. Yes, the prerequisite requirements for this move request have been met.
- C. No, split operations for NSS volumes can only occur between servers in different contexts.
- D. No, you can't split a volume at the subdirectory level.
- E. No, you can't split an NSS volume to another NSS volume.

Answer: B

---

**QUESTION 11:**

How do you perform a Down-Server Upgrade?

- A. Use iManager 2.0 or later to complete the upgrade from a workstation.
- B. Mount the NetWare 6.5 Operating System CD; then select Novell > Install to begin the upgrade.
- C. Use NetWare Deployment Manager to complete the upgrade from a workstation.
- D. Boot the server from the NetWare 6.5 Operating System CD and manually execute INSTALL.BAT with the /UPGRADE switch.

Answer: D

---

**QUESTION 12:**

Your Appliance is connected to your Central Office Server using a T1 link. Under optimal conditions, how fast can Rsync transfer data with this configuration?

- A. 3.8 MB/second
- B. 1.5 KB/second
- C. 1.5 MB/second
- D. 1.5 GB/second
- E. 3.8 GB/second

Answer: C

---

**QUESTION 13:**

If a NetWare 4.1 server exists in the tree into where you plan to install a NetWare 6.5 server, what must you do?

- A. Remove the server from the tree.
- B. Use the Generate GUIDs on NetWare 4 Servers option in Deployment Manager.
- C. Use the View and Update NDS option in Deployment Manager.
- D. Use the Prepare for New eDirectory option in Deployment Manager.
- E. Use the Extend the Core Schema option in Deployment Manager.

Answer: A

---

**QUESTION 14:**

How can you configure an existing English NetWare 6.5 server to use a German code page?

- A. Copy the LC\_850.039 code page file from the NetWare 6.5 installation CD to C:\NWSERVER\LCONFIG and rename it LCONFIG.SYS.
- B. Copy the LC\_850.039 code page file from the NetWare 6.5 installation CD to C:\NWSERVER and rename it LCONFIG.850.
- C. Copy the LC\_850.039 code page file from the NetWare 6.5 installation CD to SYS:\SYSTEM and rename it LCONFIG.850.
- D. Copy the LC\_850.039 code page file from the NetWare 6.5 installation CD to SYS:\SYSTEM and rename it LCONFIG.SYS.
- E. Copy the LC\_850.039 code page file from the NetWare 6.5 installation CD to C:\NWSERVER\LCONFIG and rename it LCONFIG.850.
- F. Copy the LC\_850.039 code page file from the NetWare 6.5 installation CD to C:\NWSERVER and rename it LCONFIG.SYS.

Answer: F

---

**QUESTION 15:**

Which products are installed during a Virtual Office Server patterned deployment?  
(Choose 3.)

- A. iSCSI
- B. Rsync
- C. NetStorage
- D. eGuide
- E. iFolder
- F. OpenSSH

Answer: C,D,E

---

**QUESTION 16:**

You are planning a consolidation of two NetWare 5.1 servers to a NetWare 6.5 server. You're using a Windows XP Home workstation with Novell Client 4.9 installed. Each server has the latest Support Pack installed. Will this consolidation succeed?

- A. Yes, the systems meet all prerequisite requirements.
- B. No, the Server Consolidation Utility is not compatible with Windows XP Home.
- C. No, the Server Consolidation Utility is incompatible with Novell Client version 4.9.
- D. No, you must uninstall all Support Packs from the source servers before consolidating them.
- E. No, you can't consolidate NetWare 5.1 servers to NetWare 6.5.

Answer: B

---

**QUESTION 17:**

CORRECT TEXT

The Nterprise Branch Office Central Office Server patterned deployment installs the \_\_\_\_\_ product, which allows for fast incremental file transfers from Branch Office Appliances.

Answer: RSYNC

---

**QUESTION 18:**

Which are included in NetWare 6.5's Open Source Services? (Choose 3.)

- A. SendMail
- B. Apache Web Server
- C. KDE
- D. MySQL
- E. Wine
- F. eGuide
- G. PHP

Answer: B,D,G

---

**QUESTION 19:**

Given that your workstation's CD drive is assigned drive letter D, what is the Migration Wizard 6.5 location and filename?

- A. D:\PRODUCTS\MGRTWZD\MIGRTWZD65.EXE
- B. D:\PRODUCTS\MIGRTWZD\MIGRTWZD.EXE
- C. D:\PRODUCTS\MIGRTWZD.EXE
- D. D:\MIGRTWZD65.EXE
- E. D:\MIGRTWZD.EXE
- F. D:\INSTALL\MIGRTWZD65.EXE

Answer: B

---

**QUESTION 20:**

CORRECT TEXT

Novell recommends that you remove the \_\_\_\_\_ attribute from all DirXML filters to avoid synchronization problems.

Answer: ACL

---

**QUESTION 21:**

You are performing a custom NetWare 6.5 server installation. You have selected Virtual Office to be included in the installation. To have the full functionality of Virtual Office,

what other products should you install? (Choose 3.)

- A. eGuide
- B. MySQL
- C. Novell Script for NetWare (NSN)
- D. iFolder
- E. Web Search Server
- F. PHP
- G. Novell exteNd Application Server
- H. iPrint

Answer: A,D,H

---

**QUESTION 22:**

Which scripting languages are included in the NetWare 6.5 Web and Application Services product? (Choose 3.)

- A. Novell ScriptPages (NSP)
- B. OpenScript
- C. Active Server Pages (ASP)
- D. PHP
- E. Universal Component System (UCS)
- F. C++

Answer: A,D,E

---

**QUESTION 23:**

You are configuring DirXML to synchronize three eDirectory trees: DA-TREE, EMA-TREE, and Certkiller CORP-TREE. Data should flow only from DA-TREE to the other two trees. Data from the other trees should not flow into DA-TREE. How should you configure the eDirectory driver in the DA-TREE?

- A. Flat
- B. Master
- C. Primary
- D. Authoritative
- E. Bi-directional
- F. Subordinate
- G. Mirrored
- H. Dept

Answer: D

---



**QUESTION 24:**

What is the role of the DirXML Join Engine?

- A. Propagates events from eDirectory to the application.
- B. Detects change events in eDirectory.
- C. Notifies eDirectory of application-generated events.
- D. Applies XML-based rules to each event presented to it.
- E. Issues and receives XML documents; converts XDS events to application events.
- F. Defines the object classes and associated attributes you want to synchronize.
- G. Propagates events from the application to eDirectory.

Answer: D

---

**QUESTION 25:**

You have an NSS pool named VOL1\_POOL. You have taken 4 snapshots of it. What is the default name assigned by NSS to the 4th snapshot of the pool?

- A. VOL1\_POOL\_4\_S
- B. VOL1\_POOL\_S\_4
- C. VOL1\_POOL\_S4
- D. VOL1\_POOL1234
- E. VOL1\_POOL\_4
- F. VOL1\_POOL4

Answer: C

---

**QUESTION 26:**

You are configuring DirXML to synchronize three eDirectory trees: DA-TREE, EMA-TREE, and Certkiller CORP-TREE. Data should flow only from DA-TREE to the other two trees. How many key material objects (KMOs) will you need?

- A. One KMO should be configured in DA-TREE as it is the authoritative data source.
- B. Two: One for the Publisher channel and one for the Subscriber channel.
- C. Four: One each for the authoritative Publisher and Subscriber channels and one for each remote tree.
- D. Six: One for each Publisher and Subscriber channel on each server.
- E. Three: One for each tree.

Answer: E

---

**QUESTION 27:**

What is the role of the DirXML Driver Application Native Interface?

- A. Propagates events from eDirectory to the application.
- B. Issues and receives XML documents, and converts XDS events to application events.
- C. Notifies eDirectory of application-generated events.
- D. Applies XML-based rules to each event presented to it.
- E. Detects change events in eDirectory.
- F. Propagates events from the application to eDirectory.
- G. Defines the object classes and associated attributes you want to synchronize.

Answer: C

---

### QUESTION 28:

When installing products on a NetWare 6.5 server, what does the Apache2 Web Server and Tomcat 4 Servlet Container product option do?

- A. Installs the Apache Web Server and Tomcat 4 for a dedicated web hosting solution.
- B. Installs both a public instance and an administration instance of Apache Web Server and Tomcat 4.
- C. Installs an administration instance of Tomcat 4.
- D. Installs an administration instance of the Apache Web Server.

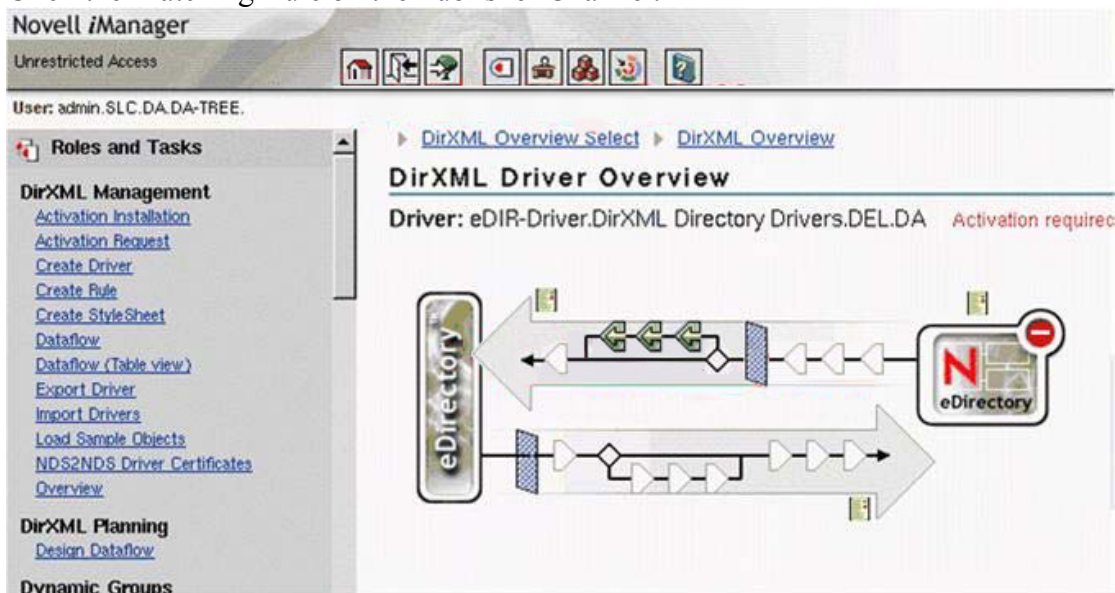
Answer: A

---

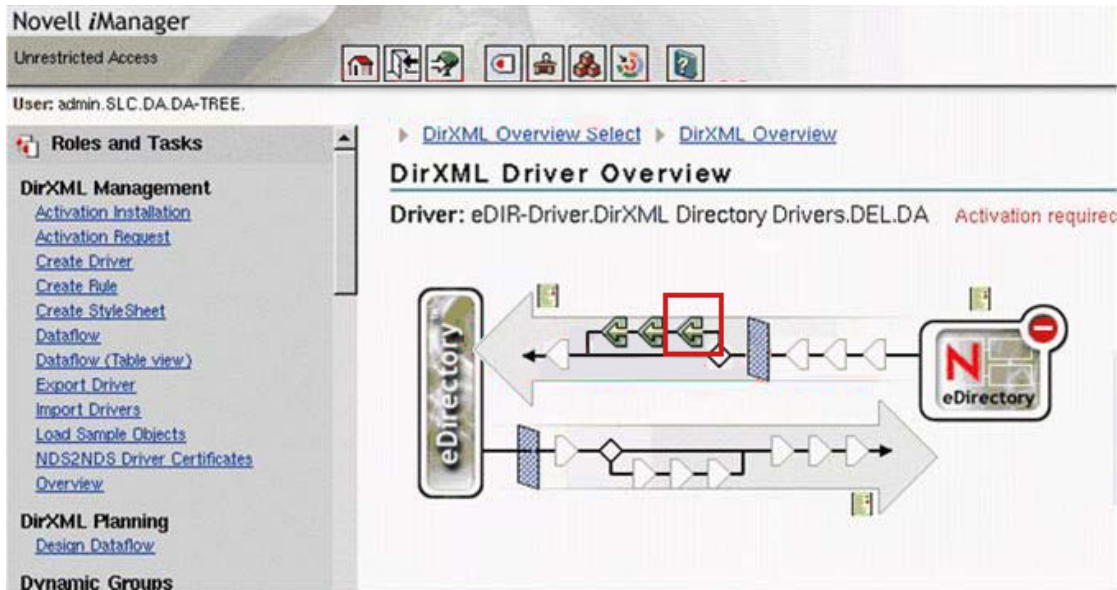
### QUESTION 29:

#### HOTSPOT

Click the Matching Rule on the Publisher Channel.



Answer:



### QUESTION 30:

What is the function of the rbsModule object?

- A. Specifies the tasks that users who are members are authorized to perform.
- B. Represents a container object that holds rbsTask and rbsBook objects.
- C. Represents a leaf object used for ACL assignments.
- D. Represents a leaf object that holds a specific function.
- E. Represents a container object that holds all RBS Role and Module objects.

Answer: B

### QUESTION 31:

Which utilities can be used to perform an NSS move or split operation? (Choose 2.)

- A. VOLMN.NLM
- B. ConsoleOne
- C. NSSMOVE.NLM
- D. iManager
- E. NetWare Administrator
- F. iMonitor
- G. NSSSPLIT.NLM
- H. Remote Manager

Answer: A,D

### QUESTION 32:

During a consolidation project, you mark Yes in the Synchronize Files and Folders screen. What will happen during the consolidation as a result?

- A. The utility will scan all dropped folders and delete files from the source server that don't exist on the destination server.
- B. Files and folders will be deleted from the source server if they are not found on the destination server.
- C. No files from the source server will be consolidated to the destination server.
- D. Files and folders will be deleted from the destination server if they are not found on the source server.
- E. All files from the source server will be consolidated to the destination server.

Answer: D

---

**QUESTION 33:**

In your tree, you deployed Universal Password. Your users now can't log in from their Windows 98 Second Edition workstations using the Novell Client 3.2. What is the resolution to the problem? (Choose 3.)

- A. Configure each user object with a Simple Password.
- B. Deploy the Novell Client 4.83 on the workstations.
- C. Upgrade the workstations to Windows 2000 Professional.
- D. Install Client NICI 2.6 or later.
- E. Upgrade the workstations to Windows XP Home or Professional.
- F. Install NMAS Client 2.2 or later.
- G. Deploy the Novell Client 3.4 on the workstations.

Answer: D,F,G

---

**QUESTION 34:**

If your NetWare 6.5 server is behind a NAT router or a proxy server and you will occasionally need to access Remote Manager from outside of the firewall, which load line will provide access?

- A. LOAD HTTPSTK.NLM /NATPASSTHRU
- B. LOAD HTTPSTK.NLM /SSL /KEYFILE:"SSL CertificateIP"
- C. LOAD PORTAL.NLM /NATPASSTHRU
- D. LOAD HTTPSTK.NLM /HOSTIDS:1 /SSL /KEYFILE:"SSL CertificateIP"
- E. LOAD PORTAL.NLM /SSL /KEYFILE:"SSL CertificateIP"
- F. LOAD PORTAL.NLM /HOSTIDS:1 /SSL /KEYFILE:"SSL CertificateIP"

Answer: D

---

**QUESTION 35:**

CORRECT TEXT

Any user that is a member of the \_\_\_\_\_ group in the eDirectory tree is granted access to the OpenSSH Manager to modify the configuration of OpenSSH servers.

Answer: SSHADMN-ADMINISTRATORS

---

**QUESTION 36:**

What is the role of a DirXML Filter?

- A. Maps the names of attributes and classes between eDirectory and the external application.
- B. Locates an existing object that matches the object generating the event.
- C. Controls the way data flows from one system to another.
- D. Determines the location of the new object in eDirectory or in the external application during an Add Object event.
- E. Establishes associations between an existing entry in eDirectory and an existing entry in the external application.
- F. Controls whether an object will be added during an Add event based on the existence of required attribute values.

Answer: C

---

**QUESTION 37:**

As a part of the In-Place Upgrade process; what command is used to mount the NetWare 6.5 Operating System CD as a volume on a NetWare 6.0 server?

- A. LOAD CD9660.NLM
- B. LOAD CD9660.NSS
- C. LOAD CDROM.NSS
- D. MOUNT -T ISO9660
- E. LOAD ISO9660.NLM
- F. LOAD ISO9660.NSS
- G. CD MOUNT ALL

Answer: B

---

**QUESTION 38:**

Which command should you execute on a NetWare 4.2 server prior to consolidating it to a NetWare 6.5 server to prevent compressed files from decompressing when accessed?

- A. SET ALLOW UNOWNED FILES TO BE EXTENDED = OFF
- B. SET COMPRESSION DAILY CHECK STOP HOUR = 0

- C. SET MAXIMUM CONCURRENT COMPRESSIONS = OFF
- D. SET CONVERT COMPRESSED TO UNCOMPRESSED OPTION = 0
- E. SET MINIMUM COMPRESSION PERCENTAGE GAIN = 1
- F. SET FAST VOLUME MOUNTS = ON

Answer: D

---

**QUESTION 39:**

When attempting an In-Place Upgrade on a NetWare 5.1 server with Support Pack 5, the upgrade process fails. Which is the cause?

- A. You must apply Support Pack 6 or later to upgrade a NetWare 5.1 server to NetWare 6.5.
- B. You can't use an In-Place Upgrade on a NetWare 5.1 Server; you must perform a Remote Upgrade.
- C. You can't use an In-Place Upgrade on a NetWare 5.1 server; you must perform a Down-Server Upgrade.
- D. NetWare 5.1 servers can't be upgraded; you must use the Migration Wizard.

Answer: A

---

**QUESTION 40:**

What must you do before deactivating a stored-on pool?

- A. Activate other stored-on pools that have snapshots on the stored-on pool to be deactivated.
- B. Deactivate the original pools that have snapshots on the stored-on pool.
- C. Rebuild the original pools that have snapshots on the stored-on pool.
- D. Activate the original pools that have snapshots on the stored-on pool.

Answer: B

---

**QUESTION 41:**

You want to create a pool snapshot of the DATA\_POOL on your server. You want to use DATA\_POOL\_S as the stored on pool. You want to name the snapshot DATA\_POOL\_S1. What command could you use from the server console to do this?

- A. mm snap DATA\_POOL\_S1 DATA\_POOL DATA\_POOL\_S create
- B. mm snap create DATA\_POOL DATA\_POOL\_S DATA\_POOL\_S1
- C. mm snap create DATA\_POOL\_S DATA\_POOL DATA\_POOL\_S1
- D. mm snap DATA\_POOL DATA\_POOL\_S DATA\_POOL\_S1 create
- E. mm snap create DATA\_POOL DATA\_POOL\_S1 DATA\_POOL\_S

Answer: B

---

**QUESTION 42:**

After upgrading a NetWare 5.1 server to NetWare 6.5, you can't mount volume DATA. Given that DATA is an NSS volume, which command will fix the problem?

- A. NSS /NW51VOLUMEUPGRADE=ALL
- B. NSS /ZLSSVOLUMEUPGRADE=ALL
- C. LOAD NW51.NSS
- D. VCU DATA DATA2
- E. NSS /NW51VOLUMEUPGRADE=ON
- F. LOAD ZLSS.NSS
- G. VOLMN DATA DATA2

Answer: B

---

**QUESTION 43:**

You have configured a DFS Management Context with the VLDB service running on DA1. In the SHARED directory on DA1's DATA volume, you created a junction to the root of the VOL1 volume on DA2. You then created a CIFS share for the SHARED directory and granted the appropriate rights to your user and group objects to access the directory. When users access the junction from their Windows 2000 Professional workstations, it fails to take them to VOL1 on DA2. Which is the resolution to this problem?

- A. Load VLDB.NLM on DA2.
- B. Add a VLDB replica to DA2.
- C. Upgrade the workstations to Windows XP Home or Professional.
- D. Enable DFS support for CIFS clients.
- E. Upgrade to the Novell Client 4.9.

Answer: D

---

**QUESTION 44:**

You want to migrate an existing NetWare 6.0 server to NetWare 6.5 running on newer, faster server hardware. Which strategies will work? (Choose 2.)

- A. Install NetWare 6.5 on the new server hardware and migrate the source NetWare 6.0 server to it.
- B. Perform an In-Place Upgrade to NetWare 6.5 on the source server. Install NetWare 6.5 on the destination server and migrate the source server to the destination server.
- C. Install NetWare 6.0 on the new server hardware and migrate the source NetWare 6.0 server to it. Then upgrade the destination server to NetWare 6.5
- D. Install NetWare 6.5 on the new server hardware and migrate the source NetWare 6.0 server to it using the /MIGRATE60 switch.

Answer: B,C

---

**QUESTION 45:**

If you configure Virtual Office to use the Logging to File option, where is the resulting log file created?

- A. SYS:\TOMCAT\4\WEBAPPS\NPS\WEB-INF\DEBUG.XML
- B. SYS:\ETC\VIRTUALOFFICE.LOG
- C. SYS:\TOMCAT\4\LOG\VO.LOG
- D. SYS:\ETC\VO.LOG
- E. SYS:\APACHE\WEBAPPS\NPS\WEB-INF\DEBUG.XML
- F. SYS:\APACHE\VO\DEBUG.XML

Answer: A

---

**QUESTION 46:**

What is the role of DirXML Schema Mapping Rules?

- A. Controls the way data flows from one system to another.
- B. Locates an existing object that matches the object generating the event.
- C. Determines the location of the new object in eDirectory or in the external application during an Add Object event.
- D. Establishes associations between an existing entry in eDirectory and an existing entry in the external application.
- E. Controls whether an object will be added during an Add event based on the existence of required attribute values.
- F. Maps the names of attributes and classes between eDirectory and the external application.

Answer: F

---

**QUESTION 47:**

In Multiple Server Administration mode, the HTTPD.CONF file is divided into which of the following object classes in eDirectory? (Choose 3)

- A. User
- B. Module
- C. Domain
- D. Block
- E. Node
- F. Server

Answer: B,D,F



---

**QUESTION 48:**

**CORRECT TEXT**

Before you configure multiple Apache Web Servers to use a common configuration in eDirectory, you must make each server a member of the same \_\_\_\_\_.

Answer: SERVERGROUP

---

**QUESTION 49:**

Which is a key component of NetWare 6.5's Web Application Services, providing a foundation for deploying web-based applications?

- A. exteNd Application Server
- B. Novell Storage Services
- C. Virtual Office
- D. iSCSI
- E. DirXML
- F. MySQL
- G. Archive and Versioning Services

Answer: A

---

**QUESTION 50:**

Replication between your Appliances and the Central Office server is failing. The system is connected with fractional T1 links. The names of the Appliances are APP-1, APP-2, and APP-3. You've configured automatic user provisioning. When you configured Rsync, you specified that the DATA volumes on App-1, App-2, and App-3 be replicated. What is problem?

- A. NICI must be disabled on the Appliances prior to replication.
- B. Rsync isn't compatible with fractional T1 links.
- C. You can't replicate volumes other than SYS.
- D. Appliance names are case-sensitive.
- E. Automatic user provisioning must be disabled prior to replicating data.
- F. NMAS must be disabled on the Appliances prior to replication.

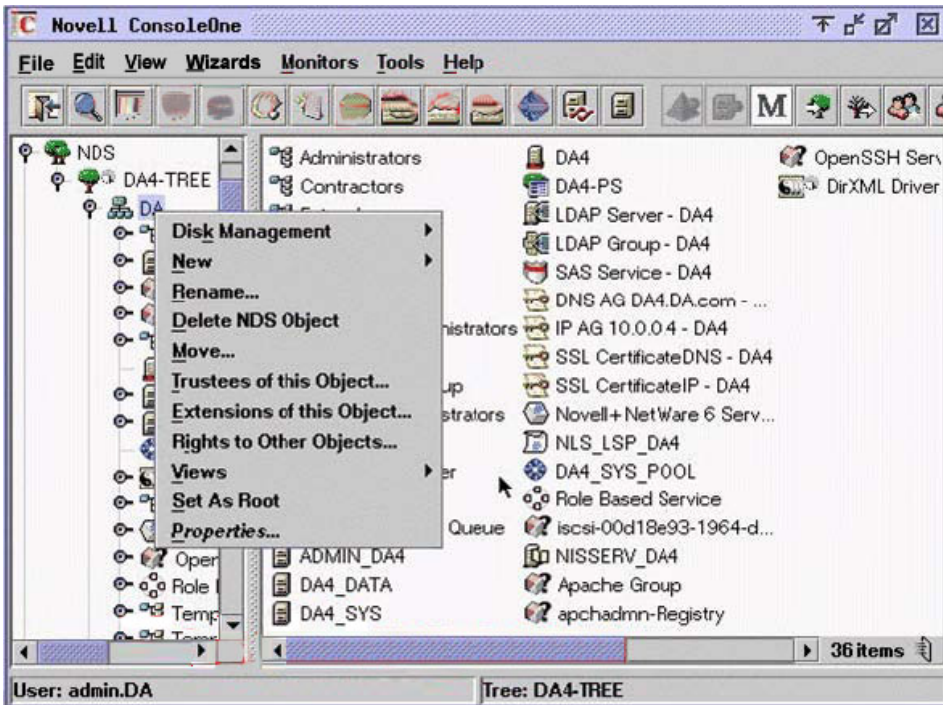
Answer: D

---

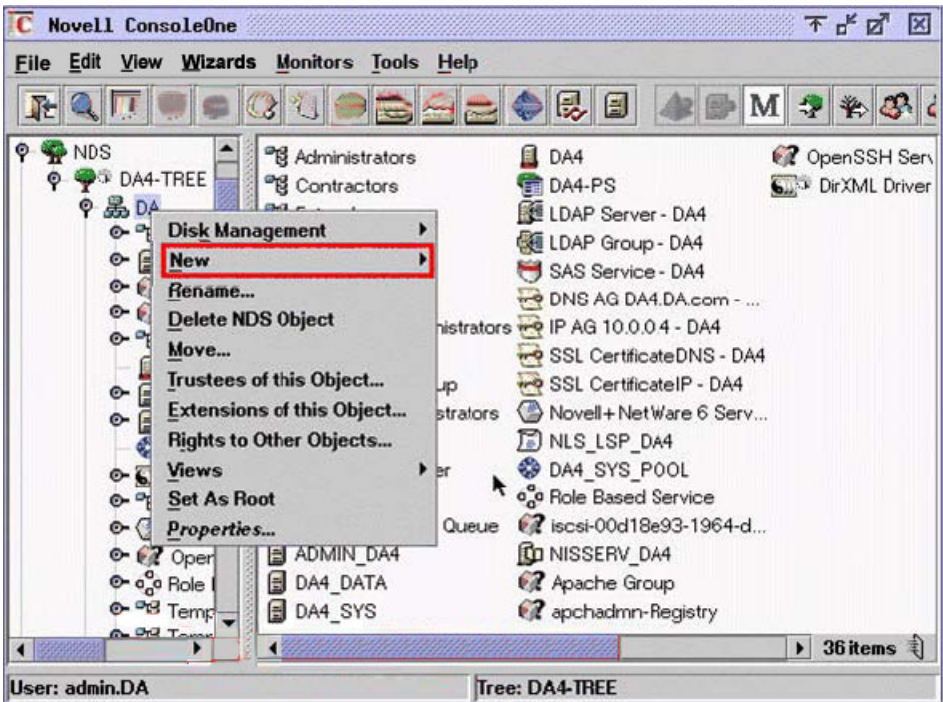
**QUESTION 51:**

**HOTSPOT**

Click the option you would select to create a new DFS Management Context.



Answer:



## QUESTION 52:

If User Provisioning has been configured in Branch Office system, what happens when a user logs into the Branch Office Appliance for the first time?

- A. The Provisioner launches the Appliance web-based administration tool and prompts the user to create a new user account.
- B. The Provisioner creates a user account on the Appliance with the same username and password as in the Central Office Server's eDirectory tree.
- C. The Provisioner creates a user account in the Central Office Server's eDirectory tree.
- D. The Provisioner notifies the administrator that a new user account needs to be created on the Appliance.
- E. The login will fail until the administrator creates a new account on the Appliance.
- F. The Provisioner creates a temporary user account on the Appliance that has a default set of rights for basic system access.

Answer: B

---

**QUESTION 53:**

While performing a consolidation project from NetWare 5.1 to NetWare 6.5, you encounter SMDR communication errors and the consolidation fails. What is the resolution to this problem?

- A. Enable binary comparison.
- B. Place an entry for the source server in the destination server's HOSTS file; then place an entry for the destination server in the source server's HOSTS file.
- C. Wait for eDirectory to synchronize.
- D. Migrate the source server to NetWare 6.0 using the Migration Wizard first; then consolidate the server to NetWare 6.5.
- E. Verify that NDPSM.NLM has been loaded on both servers.

Answer: B

---

**QUESTION 54:**

You're installing NetWare 6.5 on server hardware that uses a non-bootable SCSI CD drive. You decide to make a bootable floppy diskette. What DOS drivers will you need to load from your diskette to access the NetWare 6.5 Operating System CD? (Choose 3.)

- A. MSSCSICD.EXE
- B. SCSI host adapter driver
- C. MSCDEX.EXE
- D. SCSI .CDM driver
- E. SCSI hard disk driver
- F. SCSI block-mode driver
- G. SCSI CD driver
- H. SCSI .HAM driver

Answer: B,C,G

---

**QUESTION 55:**

Assuming the CD drive in your workstation is assigned drive letter E, where is the installation file for the Server Consolidation Utility located?

- A. E:\SERVCONS.EXE
- B. E:\TOOLS\SERVCONS.EXE
- C. E:\NWSC.EXE
- D. E:\PRODUCTS\SERVCONS\NWSC.EXE
- E. E:\PRODUCTS\SERVCONS\SERVCONS.EXE
- F. E:\TOOLS\NWSC.EXE

Answer: D

---

**QUESTION 56:**

You are performing a Remote Upgrade from your office on a server in a different city. You don't have access to the server console of the server being upgraded. Which upgrade option should you choose?

- A. Manual upgrade
- B. Default upgrade
- C. Custom upgrade
- D. Automated upgrade
- E. Complete upgrade

Answer: B

---

**QUESTION 57:**

When preparing a server for a Remote Upgrade, which tasks should you perform? (Choose 3.)

- A. Ensure all applications hosted by the server are up and running during the upgrade so they will be detected by the upgrade utility.
- B. If running ZENworks for Servers 2, install ZENworks for Servers 3 prior to the upgrade.
- C. Make a backup of the eDirectory tree and the server file system.
- D. Disconnect all users and disable user login.
- E. Remove (uninstall) all Support Packs and patches.

Answer: B,C,D

---

**QUESTION 58:**

Which NetWare 6.5 service allows users to find and restore deleted files without help

desk support?

- A. Nterprise Branch Office
- B. Virtual Office
- C. DirXML
- D. Novell File Access Protocols
- E. iFolder
- F. iSCSI
- G. Archive and Versioning

Answer: G

---

**QUESTION 59:**

What is the role of the DirXML Publisher Channel?

- A. Detects change events in eDirectory.
- B. Propagates events from eDirectory to the application.
- C. Propagates events from the application to eDirectory.
- D. Notifies eDirectory of application-generated events.
- E. Issues and receives XML documents, and converts XDS events to application events.
- F. Defines the object classes and associated attributes you want to synchronize.
- G. Applies XML-based rules to each event presented to it.

Answer: C

---

**QUESTION 60:**

What is the role of the DirXML Driver XML Interface?

- A. Propagates events from eDirectory to the application.
- B. Propagates events from the application to eDirectory.
- C. Notifies eDirectory of application-generated events.
- D. Detects change events in eDirectory.
- E. Issues and receives XML documents; converts XDS events to application events.
- F. Defines the object classes and associated attributes you want to synchronize.
- G. Applies XML-based rules to each event presented to it.

Answer: E

---

**QUESTION 61:**

Certkiller .com has three regional eDirectory trees for each geographic location. One tree runs on NetWare 5.1 servers; the others run on NetWare 6.0 servers. You've just installed a high-end NetWare 6.5 server at your organization's headquarters and want to consolidate all the servers in the disparate trees to the new server using the Server

Consolidation Utility 2.5. Can this be done?

- A. Yes, the network meets the prerequisite requirements.
- B. No, you can't consolidate servers of mixed versions to a NetWare 6.5 server using the Server Consolidation Utility 2.5.
- C. No, NetWare 5.1 servers can't be consolidated to a NetWare 6.5 server using the Server Consolidation Utility 2.5.
- D. No, NetWare 6.0 servers can't be consolidated to a NetWare 6.5 server using the Server Consolidation Utility 2.5.
- E. No, the Server Consolidation Utility 2.5 can't consolidate servers residing in different trees.

Answer: A

---

**QUESTION 62:**

What tasks must you complete when migrating a NetWare 4.2 server to NetWare 6.5?  
(Choose 3.)

- A. Load LONG.NAM on the NetWare 4.2 server and add the long name space to all volumes being migrated.
- B. Use Deployment Manager to generate GUIDs on the NetWare 4.2 server.
- C. Enable Universal Password on the destination server prior to the migration.
- D. Bind IPX on the destination server.
- E. Install and configure all additional products, such as GroupWise, prior to the migration.
- F. Upgrade the 4.2 server to NetWare 6.0; then perform a migration to NetWare 6.5.

Answer: A,B,D

---

**QUESTION 63:**

Which utility is used to configure Virtual Office parameters?

- A. Monitor
- B. EDIT.NLM or other text editor
- C. iManager
- D. NWCONFIG.NLM
- E. Remote Manager
- F. NetWare Administrator
- G. iMonitor
- H. ConsoleOne

Answer: C

---

**QUESTION 64:**

**CORRECT TEXT**

A server that functions as a disk controller for an iSCSI shared disk system is called an iSCSI \_\_\_\_\_ .

Answer: TARGET

---

**QUESTION 65:**

Which utilities are included in Novell's OpenSSH implementation? (Choose 3.)

- A. ssh
- B. ftp
- C. sftp
- D. scp
- E. telnet

Answer: A,C,D

---

**QUESTION 66:**

After completing a Remote Upgrade to NetWare 6.5 on a server in a multi-server tree, which DSREPAIR operations should you run? (Choose 3.)

- A. Unattended Full Repair
- B. Import Remote Schema
- C. Post NetWare 5 Schema Update
- D. Report Synchronization Status
- E. Designate This Server as the New Master Replica
- F. Time Synchronization

Answer: A,D,F

---

**QUESTION 67:**

You want to use an older server as a Branch Office Appliance for a remote office. The server has dual Pentium II 233 MHz CPUs, 512 MB of RAM, and a 10 GB hard disk. Can you install the Appliance software on this server hardware?

- A. No, the Branch Office Appliance software doesn't support multi-processor systems.
- B. Yes, all prerequisites are met for the Branch Office Appliance.
- C. No, the Branch Office Appliance software requires at least 20 GB of hard disk space.
- D. No, the Branch Office Appliance software requires at least 1 GB of RAM.
- E. No, the Branch Office Appliance software requires a faster CPU.

Answer: B

---

**QUESTION 68:**

Certkiller .com has three regional eDirectory trees for each geographic location. One tree runs on NetWare 5.1 servers; the others run on NetWare 6.0 servers. You've just installed a high-end NetWare 6.5 server at your organization's headquarters and want to consolidate all the servers in the disparate trees to the new server using the Server Consolidation Utility 2.5. Can this be done?

- A. No, the Server Consolidation Utility 2.5 can't consolidate servers residing in different trees.
- B. No, NetWare 5.1 servers can't be consolidated to a NetWare 6.5 server using the Server Consolidation Utility 2.5.
- C. No, NetWare 6.0 servers can't be consolidated to a NetWare 6.5 server using the Server Consolidation Utility 2.5.
- D. Yes, the network meets the prerequisite requirements.
- E. No, you can't consolidate servers of mixed versions to a NetWare 6.5 server using the Server Consolidation Utility 2.5.

Answer: D

---

**QUESTION 69:**

CORRECT TEXT

Distributed File Services uses \_\_\_\_\_, which allows volumes to be joined together such that they appear as subdirectories in one file system.

Answer: JUNCTIONS

---

**QUESTION 70:**

You've installed one Appliance and created a Settings diskette. You want to use this diskette to install subsequent Appliances. What parameters do you need to edit on the diskette before you can do this? (Choose 3.)

- A. Volume names
- B. Appliance name
- C. Central Office Server name
- D. LDAP server name
- E. DNS name
- F. IP address

Answer: B,E,F

---

**QUESTION 71:**

When attempting an In-Place Upgrade on a NetWare 5.1 server with Support Pack 5, the



upgrade process fails. Which is the cause?

- A. You must apply Support Pack 6 or later to upgrade a NetWare 5.1 server to NetWare 6.5.
- B. You can't use an In-Place Upgrade on a NetWare 5.1 Server; you must perform a Remote Upgrade.
- C. You can't use an In-Place Upgrade on a NetWare 5.1 server; you must perform a Down-Server Upgrade.
- D. NetWare 5.1 servers can't be upgraded; you must use the Migration Wizard.

Answer: A

---

**QUESTION 72:**

Which are tasks Remote Manager can perform? (Choose 3.)

- A. Configure trustee assignments to a directory or file.
- B. Compare SET parameters between servers.
- C. Modify time stamps on a directory or file.
- D. Place a replica on a server.
- E. Configure members of a group object.
- F. Configure rights to an organizational unit.
- G. Run an unattended full repair on a server.

Answer: A,B,C

---

**QUESTION 73:**

You're configuring your Virtual Office implementation on your NetWare 6.5 server to provide secure access to iPrint services hosted on a different server, DA12.DA.com. Which is the correct URL to enter in the iPrint tab in the Services Administration task? (Choose 2.)

- A. http://DA12.DA.com:2200/iPrint
- B. http://DA12.DA.com:443/iPrint
- C. https://DA12.DA.com/iPrint
- D. https://DA12.DA.com/nps/iPrint
- E. https://DA12.DA.com:443/nps/iPrint

Answer: B,C

---

**QUESTION 74:**

CORRECT TEXT

A server that accesses iSCSI shared storage is called an iSCSI \_\_\_\_\_.

Answer: INITIATOR

---

**QUESTION 75:**

Which IP ports does Remote Manager run on? (Choose 2.)

- A. 81 (insecure)
- B. 443 (secure)
- C. 2222 (secure)
- D. 8008 (insecure)
- E. 80 (insecure)
- F. 2200 (insecure)
- G. 8009 (secure)

Answer: A,D

---

**QUESTION 76:**

You're re-installing the Appliance software on a server. What will happen to your existing user data?

- A. The installation program will ask if you want to delete or preserve the existing data.
- B. The existing data will be detected and copied to a new partition where it can be accessed when the installation is complete.
- C. The installation program will prompt you that the Appliance software already exists and will exit.
- D. All existing data will be lost when the appliance re-images the drive.

Answer: A

---

**QUESTION 77:**

CORRECT TEXT

The file that is used to configure the Apache configuration daemon is named \_\_\_\_\_ and is located in SYS:\APACHE2\CONF\DAEMON.

Answer: STARTUP.PROPERTIES

---

**QUESTION 78:**

You manage 3 Apache Web Servers running on three different NetWare 6.5 web servers. You have configured your web servers to share a common configuration stored in eDirectory. You assigned your assistant to make a change to the web server configuration. However, instead of using Apache Manager, he simply edited the HTTPD.CONF file on one individual server. What is the result of this action?

- A. All Apache Web Servers in the server group will use the new configuration when the configuration daemon detects the changed file and replicates it to all other servers.

- B. Only the local Apache Web Server will use this new configuration when it is restarted.
- C. All Apache Web Servers in the server group will ignore the configuration change. Only changes made in eDirectory with Apache Manager are used.
- D. All Apache Web Servers in the server group will abend when the altered configuration is replicated by the configuration daemon.
- E. The local Apache Web Server will abend when it detects the conflicting configurations.

Answer: A

---

**QUESTION 79:**

You want to move a user object in your tree. Which iManager 2.0 role contains a task that can do this?

- A. Users
- B. Help Desk
- C. eDirectory Administration
- D. Rights
- E. Schema
- F. Servers
- G. Partition and Replicas
- H. Groups

Answer: C

---

**QUESTION 80:**

Which tasks does Virtual Office allow users to complete? (Choose 3.)

- A. Publish a personal web page.
- B. Edit documents in a web interface.
- C. Edit presentations in a web interface.
- D. Bookmark web pages.
- E. Create spreadsheets in a web interface.
- F. Configure printers in a web interface.

Answer: A,D,F

---

**QUESTION 81:**

Which operating system uses a version of NDS that is incompatible with NetWare 6.5?

- A. NetWare 5.1
- B. NetWare 6.0
- C. NetWare 4.11
- D. NetWare 5.0

- E. NetWare 4.2
- F. NetWare 3.1
- G. NetWare 4.1

Answer: G

---

**QUESTION 82:**

Which port does ssh use when running on a NetWare 6.5 server?

- A. 22
- B. 81
- C. 122
- D. 123
- E. 23
- F. 443

Answer: A

---

**QUESTION 83:**

**CORRECT TEXT**

Certkiller .com needs to provide web-hosting services for its business partners. Each partner organization needs to use its own domain name. Certkiller .com already has a NetWare 6.5 server in its Demilitarized Zone (DMZ) hosting your organization's web site using the Apache Web Server 2. To solve this problem, you can install a \_\_\_\_\_ in your Apache Web Server for each partner organization.

Answer: VIRTUALHOST

---

**QUESTION 84:**

You manage a network with four servers: Certkiller 1, Certkiller 2, Certkiller 3, and Certkiller 4. Certkiller 1 has the master replica of the root partition. You've implemented DirXML in your network to synchronize eDirectory with a Windows NT domain. You downloaded and installed the DirXML iManager plug-ins on Certkiller 1. When you run iManager from Certkiller 2, the DirXML roles aren't visible. What is the resolution to this issue?

- A. You must configure Certkiller 1 to synchronize its iManager plug-ins with Certkiller 2.
- B. It can't be resolved. You can only have one instance of a given iManager plug-in in each eDirectory tree.
- C. You must place a read/write replica of the root partition on Certkiller 2.
- D. You must place a read/write replica of the partition containing the RBS objects on Certkiller 2.
- E. You must create a filtered replica of the root partition containing only users and groups on Certkiller 2.
- F. You must manually install the DirXML iManager plug-ins on Certkiller 2.

Answer: F

---

**QUESTION 85:**

A NetWare 4.2 server is currently servicing one of your branch offices. All of the user's data is saved on the USERS volume. You are deploying a Branch Office solution. To save time, you want to install the Branch Office Appliance software on top of the NetWare 4.2 server and then simply mount the existing USERS volume as an Appliance volume. Will this work?

- A. No, the Appliance installation program removes all partitions and re-images the entire drive.
- B. Yes, but only if you apply load LONG.NAM and add the long name space to USERS before installing the Appliance.
- C. Yes, NetWare 4.2 volumes are compatible with the Appliance software.
- D. No, the Appliance software may corrupt the data on the NetWare 4.2 volume when it is mounted.
- E. No, NetWare 4.2 volumes are incompatible with the Appliance software.

Answer: A

---

**QUESTION 86:**

Given that your NetWare 6.5 server has a DNS name of FS14.acmecorp.com; which URL would you use to access iManager 2.0?

- A. https://FS14.acmecorp.com:2200/iManager.html
- B. http://FS14.acmecorp.com/nps/iManager.html
- C. http://FS14.acemcorp.com:2222
- D. https://FS14.acmecorp.com:2222/iMan20.html
- E. https://FS14.acmecorp.com/nps/iMan20.html
- F. http://FS14.acmecorp.com:2200/iMan.html

Answer: B

---

**QUESTION 87:**

When using sftp, which command is used to change the current directory on the local host?

- A. lls
- B. ls
- C. lcd
- D. chdir
- E. chdir -local
- F. cd

Answer: C

---

**QUESTION 88:**

If a NetWare 4.2 server exists in the tree where you plan to install a NetWare 6.5 server, what must you do?

- A. Run Deployment Manager and select the Generate GUIDs on NetWare 4 Servers option.
- B. Implement Universal Password before installing NetWare 6.5.
- C. Run Deployment Manager and select the Update Certificate Authority Objects option.
- D. Remove the server from the tree.
- E. Run Deployment Manager and select the Prepare for CIFS/AFP option.

Answer: A

---

**QUESTION 89:**

Which files are created in SYS:\ETC when a server has been designated as host for the NSS VLDB service? (Choose 3.)

- A. VLDB.DAT
- B. VLDB.CONF
- C. VLDB.NLM
- D. VLDB.CFG
- E. VLRPR.LOG
- F. VLDBCFG.DAT

Answer: A,E,F

---

**QUESTION 90:**

You're configuring a Branch Office system. Your Central Office Server is named Certkiller 1 in the Certkiller 1-TREE. Which eDirectory object do you need to extract an SSL certificate from?

- A. CertMutual
- B. W0
- C. Certkiller 1-TREE CA
- D. SSL Certificate-DNS\_ Certkiller 1
- E. SSL Certificate-L Certkiller P\_ Certkiller 1

Answer: E

---

**QUESTION 91:**

CORRECT TEXT

An element of NetWare 6.5's Productivity-Enhancing Services is \_\_\_\_\_, which allows users to create web-based collaboration teams.

Answer: VIRTUALOFFICE

---

**QUESTION 92:**

What is the recommended size for your server's DOS partition?

- A. 500 MB + the amount of RAM in the system
- B. 200 MB + the amount of RAM in the system
- C. 200 MB + the amount of RAM in the system + the amount of L1 cache in the system
- D. 300 MB + the amount of RAM in the system + the amount of hard disk cache in the system

Answer: A

---

**QUESTION 93:**

CORRECT TEXT

Virtual Office allows users to set up their own \_\_\_\_\_ to increase real-time collaboration.

Answer: TEAMS

---

**QUESTION 94:**

You are configuring DirXML to synchronize three eDirectory trees: DA-TREE, EMA-TREE, and Certkiller CORP-TREE. Data should flow only from DA-TREE to the other two trees. You want all objects from DA-TREE, regardless of context, to be synchronized to a single container in both EMA-TREE and in Certkiller CORP-TREE. How should you configure the eDirectory drivers in EMA-TREE and Certkiller CORP-TREE?

- A. Subordinate
- B. Single
- C. Authoritative
- D. Dept
- E. Bi-directional
- F. Mirrored
- G. Flat
- H. Consolidated

Answer: G

---

**QUESTION 95:**

CORRECT TEXT

In RBS, a defined set of tasks that can be delegated to users in the tree is called a

\_\_\_\_\_.

Answer: ROLE

---

**QUESTION 96:**

You're configuring your Virtual Office implementation on your NetWare 6.5 server to provide access to users' email accounts services hosted on a Linux server, mail.DA.com. Which mail server type should you select in the Email tab in the Services Administration task?

- A. POP3 Server
- B. SendMail
- C. IMAP Server
- D. Postfix
- E. GroupWise
- F. Lotus Notes
- G. Microsoft Exchange
- H. IMAP/POP3

Answer: H

---

**QUESTION 97:**

Which product can only be installed after a Remote Upgrade to NetWare 6.5 is complete?

- A. MySQL
- B. NetWare FTP Server
- C. Novell Cluster Services
- D. iPrint
- E. Apache Web Server 2
- F. iFolder

Answer: C

---

**QUESTION 98:**

CORRECT TEXT

If you need limited access to your server for debugging purposes, Remote Manager provides the \_\_\_\_\_ user account.

Answer: SDEBUG



**QUESTION 99:**

Which are components of Nterprise Branch Office? (Choose 3.)

- A. Novell exteNd Application Server
- B. Rsync
- C. iSCSI
- D. Branch Office Appliance
- E. UDDI
- F. Central Office Server
- G. MySQL

Answer: B,D,F

---

**QUESTION 100:**

CORRECT TEXT

NetWare 6.5 includes iSCSI functionality, which allows you to create a storage area network over an Ethernet network using the \_\_\_\_\_ protocol.

Answer: TCP/IP

---

**QUESTION 101:**

When performing a Default Installation of NetWare 6.5, which parameters are configured automatically by the installation program? (Choose 2.)

- A. Basic NetWare File Server patterned deployment
- B. 4 GB SYS volume
- C. 4 GB DATA volume
- D. VGA video mode
- E. Codepage 437

Answer: B,E

---

**QUESTION 102:**

If you wanted to use your NetWare 6.5 server to host web-enabled database applications, which patterned deployment option should you select?

- A. Virtual Office Server
- B. Basic NetWare File Server
- C. NetWare Web Search Server
- D. Apache/Tomcat Server
- E. Management Server

F. NetWare AMP Server

Answer: F

---

**QUESTION 103:**

You are working at the server console of FS1. You need to securely copy files to FS12, located in another city. FS12's IP address is 192.168.1.12. Which command will allow you to open an OpenSSH ftp connection to FS12 as your admin user from the server console of FS1?

- A. ssh ftp 192.168.1.12 -u admin
- B. openftp FS12 -u admin
- C. sftp admin@192.168.1.12
- D. sftp open admin@192.168.1.12
- E. sftp FS1 FS12 admin
- F. openftp admin@192.168.1.12

Answer: C

---

**QUESTION 104:**

Certkiller .com has three regional eDirectory trees for each geographic location. One tree runs on NetWare 5.1 servers; the others run on NetWare 6.0 servers. You've just installed a high-end NetWare 6.5 server at your organization's headquarters and want to consolidate all the servers in the disparate trees to the new server using the Server Consolidation Utility 2.5. Can this be done?

- A. No, you can't consolidate servers of mixed versions to a NetWare 6.5 server using the Server Consolidation Utility 2.5.
- B. No, NetWare 6.0 servers can't be consolidated to a NetWare 6.5 server using the Server Consolidation Utility 2.5.
- C. No, the Server Consolidation Utility 2.5 can't consolidate servers residing in different trees.
- D. Yes, the network meets the prerequisite requirements.
- E. No, NetWare 5.1 servers can't be consolidated to a NetWare 6.5 server using the Server Consolidation Utility 2.5.

Answer: D

---

**QUESTION 105:**

Which NetWare utilities can be used to perform a Remote Upgrade? (Choose 2.)

- A. iMonitor
- B. Remote Manager
- C. iManager

- D. ConsoleOne
- E. NetWare Administrator
- F. Deployment Manager

Answer: C,F

---

**QUESTION 106:**

Certkiller .com has three regional Windows NT Domains for each geographic location. A Windows NT 4 server hosts each domain. You also have a NetWare 5.1 server providing services for your organization's headquarters. You've just installed a high-end NetWare 6.5 server into its own tree and want to consolidate all the servers in your organization to the new server using the Server Consolidation Utility 2.5. Can this be done?

- A. No, multiple Domains can't be consolidated to a NetWare 6.5 server using the Server Consolidation Utility 2.5.
- B. No, the Server Consolidation Utility 2.5 can't consolidate Windows NT Domains.
- C. No, you can't consolidate a mixture of NT Domains and NetWare servers to a NetWare 6.5 server using the Server Consolidation Utility 2.5.
- D. Yes, the network meets the prerequisite requirements.
- E. No, NetWare 5.1 servers can't be consolidated to a NetWare 6.5 server using the Server Consolidation Utility 2.5.

Answer: D

---

**QUESTION 107:**

When attempting an In-Place Upgrade on a NetWare 5.1 server with Support Pack 5, the upgrade process fails. Which is the cause?

- A. NetWare 5.1 servers can't be upgraded; you must use the Migration Wizard.
- B. You can't use an In-Place Upgrade on a NetWare 5.1 server; you must perform a Down-Server Upgrade.
- C. You must apply Support Pack 6 or later to upgrade a NetWare 5.1 server to NetWare 6.5.
- D. You can't use an In-Place Upgrade on a NetWare 5.1 Server; you must perform a Remote Upgrade.

Answer: C

---

**QUESTION 108:**

Which of the following tasks are performed within the Virtual Office web page instead of iManager? (Choose 2.)

- A. IMAP/POP3 server address
- B. Team file share

- C. Set notify preferences
- D. Chat IP port
- E. Add team owners

Answer: C,E

---

**QUESTION 109:**

During installation, you configured an Appliance with the IP address of 192.168.1.1.  
What URL is used to access the Branch Office Web Administrator?

- A. https://192.168.1.1/WebAdmin
- B. http://192.168.1.1:636
- C. https://192.168.1.1:631
- D. https://192.168.1.1:2222
- E. http://192.168.1.1:2222
- F. http://192.168.1.1/WebAdmin

Answer: D

---

**QUESTION 110:**

What does the View and Update NDS option in Deployment Manager do?

- A. Places a Read/Write replica of the root partition on all existing servers in the tree.
- B. Locates servers that are running incompatible versions of Directory Services and removes them from the tree.
- C. Copies a new version of DS.NLM and SGUID.NLM to NetWare 4 servers in the tree.
- D. Upgrades existing versions of NDS in the tree to eDirectory.
- E. Patches existing servers in the tree to a revision level compatible with the version of eDirectory used by NetWare 6.5.

Answer: E

---

**QUESTION 111:**

Certkiller .com has implemented ZENworks for Servers Tiered Electronic Distribution with Nterprise Branch Office. Given this, which IP port must be kept open on your organization's firewalls?

- A. 1299
- B. 20
- C. 21
- D. 2222
- E. 873
- F. 631

Answer: A

---

**QUESTION 112:**

Which NetWare utilities can be used to remotely install products on a NetWare 6.5 server? (Choose 2.)

- A. NetWare Administrator
- B. Deployment Manager
- C. iMonitor
- D. NetWare GUI Install utility through Remote Manager
- E. ConsoleOne

Answer: B,D

---

**QUESTION 113:**

You want to create a new user in your tree. Which iManager 2.0 roles contain tasks that can do this? (Choose 3.)

- A. Schema
- B. Groups
- C. Rights
- D. eDirectory Administration
- E. Help Desk
- F. Users
- G. Partition and Replicas
- H. Servers

Answer: D,E,F

---

**QUESTION 114:**

What is the role of the DirXML Subscriber Channel?

- A. Detects change events in eDirectory.
- B. Notifies eDirectory of application-generated events.
- C. Propagates events from eDirectory to the application.
- D. Defines the object classes and associated attributes you want to synchronize.
- E. Issues and receives XML documents, and converts XDS events to application events.
- F. Applies XML-based rules to each event presented to it.
- G. Propagates events from the application to eDirectory.

Answer: C

---

**QUESTION 115:**

After installing Support Pack 1 on NetWare 6.5, where are the Archive and Versioning files located?

- A. In SYS:\ARKMANAGER
- B. On the NetWare 6.5 Operating System CD in the TOOLS\ARKMAN directory.
- C. On the NetWare 6.5 Products CD in the PRODUCTS\ARKMAN directory.
- D. In SYS:\PUBLIC\ARKMANAGER
- E. In SYS:\ARKMAN

Answer: A

---

**QUESTION 116:**

CORRECT TEXT

To get the name of an Appliance, you can enter \_\_\_\_\_ at the Appliance command prompt.

Answer: GETSERVERNAME

---

**QUESTION 117:**

What can a DFS junction point to? (Choose 2.)

- A. A subdirectory on a volume on a remote server in a different eDirectory tree.
- B. A subdirectory on a volume on a remote server in the same eDirectory tree.
- C. The root directory of a volume on a remote server in a different eDirectory tree.
- D. The root directory of a volume on the local server.
- E. A subdirectory on a volume on the local server.
- F. The root directory of a volume on a remote server in the same eDirectory tree.

Answer: D,F

---

**QUESTION 118:**

CORRECT TEXT

To start the Archive Server, you enter \_\_\_\_\_ at the server console.

Answer: ARKSTART

---

**QUESTION 119:**

You're configuring your Virtual Office implementation on your NetWare 6.5 server to provide access to users' email accounts services hosted on a Linux server, mail.DA.com. Which mail server type should you select in the Email tab in the Services Administration

task?

- A. IMAP/POP3
- B. Microsoft Exchange
- C. POP3 Server
- D. IMAP Server
- E. Postfix
- F. GroupWise
- G. Lotus Notes
- H. SendMail

Answer: A

---

**QUESTION 120:**

How is eDirectory used when Apache Manager is configured in Multiple Server Administration model? (Choose 2.)

- A. With partitioning and replication, it is used to provide failover functionality by distributing multiple instances of the same web server among several NetWare 6.5 servers.
- B. It is used as a repository for Open Source applets, allowing them to be shared concurrently by multiple Apache Web Servers.
- C. It allows configuration parameters to be shared among multiple Apache Web Servers.
- D. It is used to perform reverse lookups on requests coming from outside your domain.
- E. It is used as a database for storing Apache configuration parameters.

Answer: C,E

---

**QUESTION 121:**

CORRECT TEXT

If your server's DNS name is DA1.DA.com, you would use \_\_\_\_\_ as the URL to access Virtual Office on your server.

Answer: HTTP://DA1.DA.COM/VO

---

**QUESTION 122:**

Which products does Virtual Office provide web-based access to? (Choose 3.)

- A. iFolder
- B. NetStorage
- C. Rsync
- D. iSCSI
- E. Web Search Server

F. eGuide

Answer: A,B,F

---

**QUESTION 123:**

Which is a key component of NetWare 6.5's Web Application Services, providing a foundation for deploying web-based applications?

- A. exteNd Application Server
- B. Virtual Office
- C. MySQL
- D. Archive and Versioning Services
- E. DirXML
- F. Novell Storage Services
- G. iSCSI

Answer: A

---

**QUESTION 124:**

Which licensed drivers are included in the DirXML Starter Pack? (Choose 3.)

- A. Microsoft Exchange
- B. NT Domains
- C. eDirectory
- D. Active Directory
- E. Lotus Notes
- F. PeopleSoft

Answer: B,C,D

---

**QUESTION 125:**

CORRECT TEXT

An element of NetWare 6.5's Business Continuity Services is \_\_\_\_\_, which allows you to configure a storage area network (SAN) using standard Ethernet hardware.

Answer: iSCSI

---

**QUESTION 126:**

What is the role of DirXML Creation Rules?

- A. Establishes associations between an existing entry in eDirectory and an existing entry in the external application.



- B. Determines the location of the new object in eDirectory or in the external application during an Add Object event.
- C. Controls whether an object will be added during an Add event based on the existence of required attribute values.
- D. Maps the names of attributes and classes between eDirectory and the external application.
- E. Controls the way data flows from one system to another.
- F. Locates an existing object that matches the object generating the event.

Answer: C

---

**QUESTION 127:**

You're configuring your Virtual Office implementation on your NetWare 6.5 server to provide access to users' email accounts services hosted on a Linux server, mail.DA.com. Which mail server type should you select in the Email tab in the Services Administration task?

- A. GroupWise
- B. Postfix
- C. IMAP/POP3
- D. SendMail
- E. IMAP Server
- F. Lotus Notes
- G. Microsoft Exchange
- H. POP3 Server

Answer: C

---

**QUESTION 128:**

You are working at the server console of FS1. You need secure access to the server console of FS12, located in another city. FS12's IP address is 192.168.1.12. Which command will allow you to open an OpenSSH connection to FS12 as your admin user from the server console of FS11?

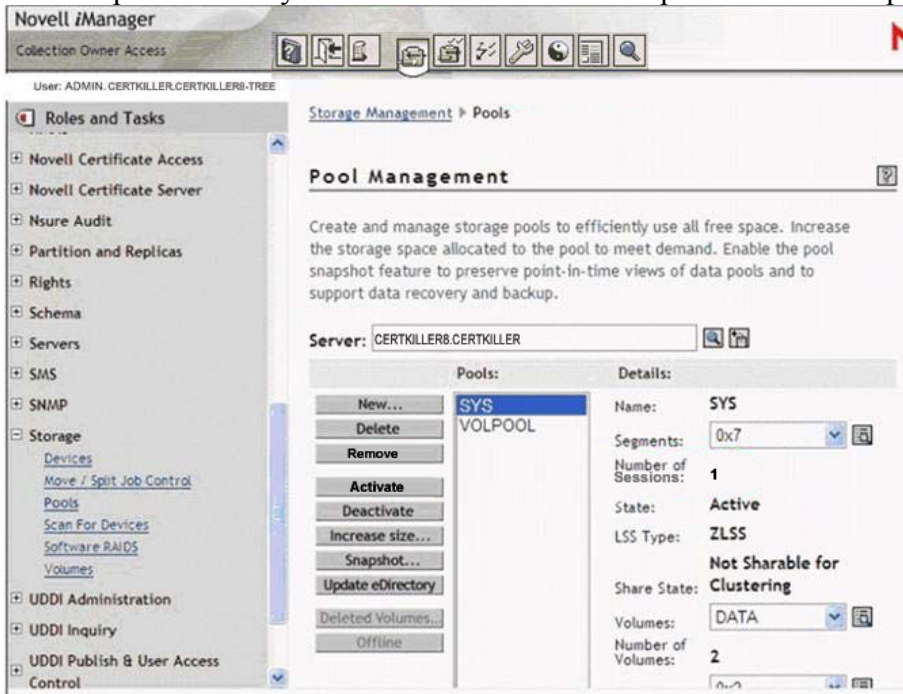
- A. ssh open admin@192.168.1.12
- B. ssh FS1 FS12 admin
- C. openssh admin@192.168.1.12
- D. openssh FS12 -u admin
- E. ssh open 192.168.1.12 -u admin
- F. ssh admin@192.168.1.12

Answer: F

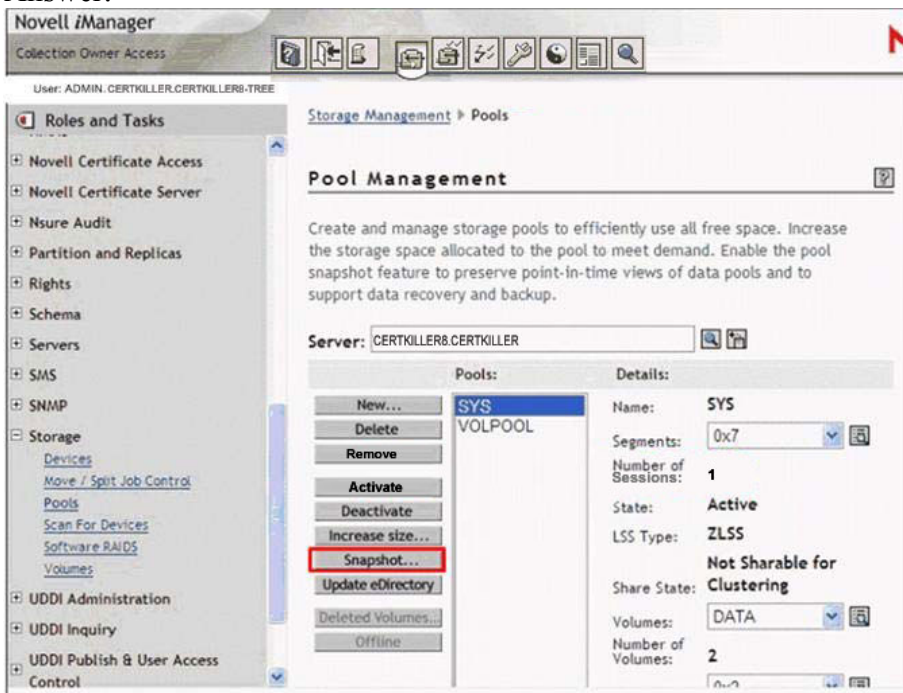
---

**QUESTION 129:****HOTSPOT**

Which option should you select to create a new snapshot of the SYS pool?



Answer:

**QUESTION 130:**

**CORRECT TEXT**

DirXML translates directory data and events into \_\_\_\_\_ format.

Answer: XML

---

**QUESTION 131:**

Which products are installed during a Management Server patterned deployment?  
(Choose 3.)

- A. iSCSI
- B. iManager
- C. Virtual Office
- D. ConsoleOne
- E. iMonitor
- F. OpenSSH

Answer: B,D,E

---

**QUESTION 132:**

Which password does the CIFS service on your NetWare 6.5 server use, by default, to authenticate clients after initial installation ?

- A. Simple Password
- B. eDirectory Password
- C. LDAP Password
- D. NIS Password
- E. Universal Password

Answer: A

---

**QUESTION 133:**

You are a regional network administrator performing a Remote Upgrade to NetWare 6.5 on a NetWare 5.1 server. The server has 512 MB of RAM, an 80 GB hard disk drive with a 1 GB DOS partition, and Support Pack 6 installed. Your user object has the Supervisor right to the container where the server resides and Browse rights to the root of the tree. Will the upgrade be successful?

- A. No, you must have the Supervisor right to the root of the tree.
- B. No, you can't perform a Remote Upgrade on a NetWare 5.1 server. You must use an In-Place Upgrade.
- C. No, the DOS partition is too small.
- D. Yes, the system meets all prerequisite requirements.
- E. No, The server doesn't have enough RAM.

Answer: A

---

**QUESTION 134:**

You're planning a Branch Office Deployment. Your system will contain one Central Office Server at your organization's corporate headquarters and three remote Branch Office Appliances connected by a T1 link. You want to manage all user accounts at the home office. To do this, what service must be working properly on the Central Office Server?

- A. Novell exteNd Application Server
- B. MySQL
- C. LDAP
- D. OpenSSH
- E. Tomcat
- F. iSCSI
- G. Rsync

Answer: C

---

**QUESTION 135:**

Which products are included in a NetWare AMP Server patterned deployment? (Choose 3.)

- A. UDDI
- B. Apache Web Server 2
- C. Virtual Office
- D. Rsync
- E. MySQL
- F. PHP

Answer: B,E,F

---

**QUESTION 136:**

Which command is used to load the iSCSI initiator service on a NetWare 6.5 server?

- A. ISCSINIT
- B. ISINIT
- C. ION
- D. INITON
- E. TON
- F. INITIATOR

Answer: C

---

**QUESTION 137:**

Given that a particular OpenSSH configuration has not been imported into the eDirectory tree; where is the OpenSSH configuration is stored?

- A. SYS:\ETC\OPENSSH.CFG
- B. SYS:\SYSTEM\OPENSSH.CFG
- C. SYS:\ETC\SSH\OPENSSH.CFG
- D. SYS:\ETC\SSHD\_CONFIG
- E. SYS:\SYSTEM\SSHD\_CONFIG
- F. SYS:\ETC\SSH\SSHD\_CONFIG

Answer: F

---

**QUESTION 138:**

You've created a junction on a NetWare 6.5 server that points to an traditional volume on a remote NetWare 6.5 server in the same eDirectory tree. When users log in from their Windows 2000 Professional workstations using the Novell Client 4.83, the junction doesn't work. Which is the correct resolution to this problem?

- A. Use the VCU.NLM utility to upgrade the remote volume to an NSS volume.
- B. Create a CIFS share; then use the native Microsoft client software to access the share.
- C. Upgrade the workstations to Windows XP Home or Professional.
- D. Upgrade the workstations to the Novell Client 4.9.

Answer: B

---

**QUESTION 139:**

Which command will allow open files on an NSS volume named VOL1 to be copied during a consolidation project?

- A. NSS /VOLUMEAUTOACTIVATE=VOL1
- B. NSS /STOPNORMALCOMPRESSION=VOL1
- C. NSS /NOMIGRATION=VOL1
- D. NSS /READAHEADBLKS=VOL1:2
- E. NSS /FILECOPYONWRITE=VOL1

Answer: E

---

**QUESTION 140:**

CORRECT TEXT

When you use the Server Consolidation Utility, the source and destination servers must

use the same \_\_\_\_\_, or data could be lost.

Answer: CODEPAGE

---

**QUESTION 141:**

While performing a consolidation project using servers in two different eDirectory trees, the Server Consolidation Utility displays the Tree to Tree Object Match-Up screen. What types of objects need to be matched between the two trees? (Choose 2.)

- A. Group objects
- B. NCP Server objects
- C. Organizational Unit objects
- D. LDAP Group objects
- E. LDAP Server objects
- F. Organization objects
- G. User objects
- H. Country objects

Answer: B,G

---

**QUESTION 142:**

Which web-based services does Virtual Office provide? (Choose 3.)

- A. Project management
- B. Chat
- C. Word processor
- D. Calendar
- E. Bookmarks
- F. Spreadsheet

Answer: B,D,E

---

**QUESTION 143:**

You're configuring your Virtual Office implementation on your NetWare 6.5 server to provide secure access to eGuide services hosted on a different server, Certkiller 7. Certkiller .com. Which is the correct URL to enter in the eGuide tab in the Services Administration task?

- A. http:// Certkiller 7. Certkiller .com/nps/eGuide
- B. http:// Certkiller 7. Certkiller .com:389/eGuide
- C. http:// Certkiller 7. Certkiller .com/eGuide/home.html
- D. https:// Certkiller 7. Certkiller .com/nps/eGuide
- E. https:// Certkiller 7. Certkiller .com/eGuide

F. [https:// Certkiller 7. Certkiller .com:636/eGuide](https://www.certkiller.com/636/eGuide)

Answer: E

---

**QUESTION 144:**

What is the role of the DirXML eDirectory Interface?

- A. Notifies eDirectory of application-generated events.
- B. Issues and receives XML documents; converts XDS events to application events.
- C. Detects change events in eDirectory.
- D. Defines the object classes and associated attributes you want to synchronize.
- E. Applies XML-based rules to each event presented to it.
- F. Propagates events from the application to eDirectory.
- G. Propagates events from eDirectory to the application.

Answer: C

---

**QUESTION 145:**

What is the role of the ARKSQL.CNF file?

- A. It contains configuration settings for the Archive and Versioning Services MySQL instance.
- B. It contains configuration settings for the Archive Server.
- C. It contains XML code for configuring an upgrade from Archive and Versioning Services 1.0.
- D. It contains sample XML code for creating versioning jobs.

Answer: A

---

**QUESTION 146:**

Which are components of the DirXML Driver? (Choose 2.)

- A. Application Native Interface
- B. XML Interface
- C. Subscriber Filter
- D. Publisher Filter
- E. Join Engine
- F. eDirectory Interface

Answer: A,B

---

**QUESTION 147:**

Which files are created in SYS:\ETC when a server has been designated as host for the NSS VLDB service? (Choose 3.)

- A. VLRPR.LOG
- B. VLDBCFG.DAT
- C. VLDB.CONF
- D. VLDB.DAT
- E. VLDB.NLM
- F. VLDB.CFG

Answer: A,B,D

---

**QUESTION 148:**

Which parameters can be configured in the iManager Services Administration task?  
(Choose 2.)

- A. Team access controls
- B. Team file share
- C. Company information
- D. Chat server IP port
- E. eGuide parameters

Answer: C,E

---

**QUESTION 149:**

You've just activated a pool snapshot named Certkiller \_POOL\_S3. The volume in the original pool is named Certkiller . What is the default name of the volume in the activated pool snapshot?

- A. Certkiller \_S3
- B. Certkiller
- C. Certkiller \_SV
- D. Certkiller \_POOL\_S3\_ Certkiller
- E. Certkiller \_POOL\_S3V

Answer: C

---

**QUESTION 150:**

CORRECT TEXT

The \_\_\_\_\_ file, located in SYS:\SYSTEM, provides OpenSSH services on a NetWare 6.5 server.

Answer: SSHD

---



**QUESTION 151:**

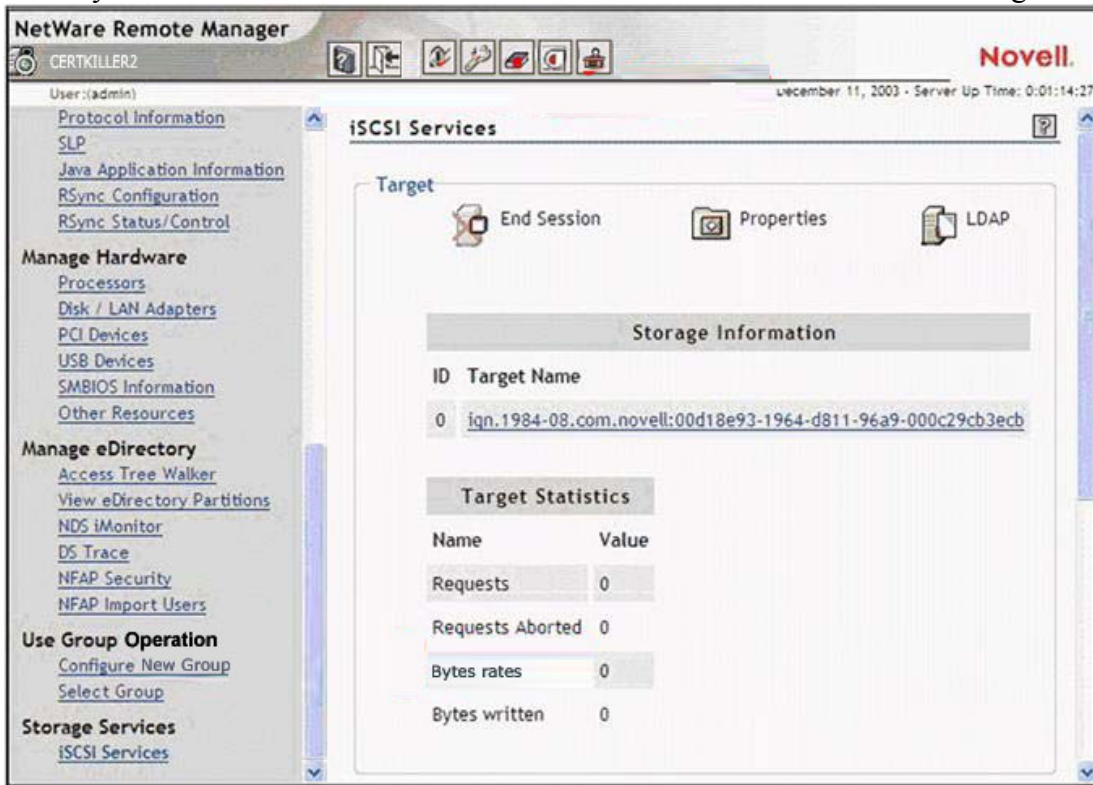
Which components are used to define a DirXML authoritative data source? (Choose 3.)

- A. Port assignments
- B. Stylesheets
- C. Filters
- D. Packet filtering
- E. Rules
- F. License agreements

Answer: B,C,E

**QUESTION 152:**

If you wanted to connect to the iSCSI target displayed in the exhibit, what command would you enter at the iSCSI initiator server console? The IP address of the target is 10.0.0.4.



- A. ISCSIINIT CONNECT TARGET=10.0.0.4 NAME=iqn.1984-08.com.novell:00d18e93-1964-d811-96a9-000c29cb3ecb
- B. ISCSIINIT CONNECT TARGET=10.0.0.4
- C. ISCSIINIT CONNECT iqn.1984-08.com.novell:00d18e93-1964-d811-96a9-000c29cb3ecb 10.0.0.4
- D. ISCSIINIT CONNECT 10.0.0.4 iqn.1984-08.com.novell:00d18e93-1964-d811-96a9-000c29cb3ecb
- E. ISCSIINIT CONNECT 10.0.0.4 Certkiller 2
- F. ISCSIINIT 10.0.0.4 iqn.1984-08.com.novell:00d18e93-1964-d811-96a9-000c29cb3ecb

Answer: D

---

**QUESTION 153:**

You're installing a new NetWare 6.5 server into an existing tree. The tree already contains two NetWare 4.2 servers with Support Pack 5 applied, three NetWare 5.0 servers with Support Pack 4 applied, and two NetWare 5.1 servers with Support Pack 3 applied. Will the installation be successful?

- A. No, the existing NetWare 4.2 servers must have Support Pack 6a or later installed.
- B. No, the NetWare 4.2 servers must be removed from the tree before NetWare 6.5 can be installed.
- C. No, the existing NetWare 5.1 servers must have Support Pack 6 or later applied.
- D. No, the existing NetWare 5.0 servers must have Support Pack 6 or later applied.
- E. Yes, the existing network meets prerequisite requirements.

Answer: A

---

**QUESTION 154:**

CORRECT TEXT

The iSCSI SAN Storage Server patterned deployment makes the NetWare 6.5 server an iSCSI \_\_\_\_\_.

Answer: TARGET

---

**QUESTION 155:**

Which licensed drivers are included in the DirXML Starter Pack? (Choose 3.)

- A. Microsoft Exchange
- B. Active Directory
- C. PeopleSoft
- D. Lotus Notes
- E. NT Domains
- F. eDirectory

Answer: B,E,F

---

**QUESTION 156:**

On a NetWare 6.5 server, you must restart the Tomcat service after installing a new iManager plug-in. How can you do this?

- A. At the server console, enter TC4RESTART.
- B. At the server console, enter TC4STOP; then enter TOMCAT4.

- C. At the server console, enter TC4 /RESTART.
- D. At the server console, enter TOMCAT -RESTART.
- E. At the server console, enter TOMCAT /STOP; then enter TOMCAT /START.

Answer: B

---

**QUESTION 157:**

You want to upgrade a NetWare 6 server with Support Pack 1 to NetWare 6.5. The server hardware uses a Pentium II 400 MHz CPU, 512 MB RAM, an 8 GB hard disk drive with a 200 MB DOS partition, and a USB mouse. Can this server be upgraded?

- A. No, the server's DOS partition is too small and USB mice aren't supported.
- B. Yes, the server meets all prerequisite requirements.
- C. No, the server's DOS partition is too small and must have Support Pack 3 or later applied.
- D. No, NetWare 6.5 requires a PIII 750 MHz CPU or later.
- E. No, the server's CPU is too slow and the hard disk drive is too small.
- F. No, the server doesn't have enough RAM and must have Support Pack 3 or later applied.

Answer: C

---

**QUESTION 158:**

Which is a valid name you can use to name your server during a NetWare 6.5 installation? (Choose 3.)

- A. Alpha\_Server
- B. Alpha\_Server\_Building-B
- C. A
- D. Alpha\_Server\_Building-B\_Salt-Lake-City\_United-States
- E. \_Alpha
- F. Alpha Server
- G. .Alpha

Answer: A,B,E

---

**QUESTION 159:**

Which file displays a customized disclaimer page that is presented when accessing Remote Manager?

- A. SYS:\SYSTEM\PRTLDISC.HTM
- B. SYS:\PUBLIC\PRTLDISC.HTM
- C. SYS:\PUBLIC\PRTLTX.THTM
- D. SYS:\SYSTEM\PRTLTX.THTM
- E. SYS:\LOGIN\PRTLDISC.HTM

Answer: E

---

**QUESTION 160:**

Which is true regarding the Apache Web Server's HTTPD.CONF file?

- A. It's a binary file that can be edited with Apache Manager or with a binary file editor.
- B. It's a text file that can be edited only with the Apache Manager web page.
- C. It's a binary file that can be edited only with the Apache Manager web page.
- D. It's a text file that can be edited with Apache Manager or with a text editor.

Answer: D

---

**QUESTION 161:**

You're implementing DirXML to synchronize data between two eDirectory trees. How many DirXML eDirectory drivers do you need to install?

- A. One in the eDirectory tree that will be the authoritative data source.
- B. None. DirXML can communicate natively with eDirectory to synchronize trees.
- C. Four. One for each tree's Publisher and Subscriber channels.
- D. Two. One in each eDirectory tree.

Answer: D

---

**QUESTION 162:**

You are migrating a NetWare 5.1 server to NetWare 6.5. The source server name is DA36 and is located in FINANCE.SLC.DA in the DA-TREE. You install the pre-migration NetWare 6.5 server as DA36 located in .DA in the TEMP-TREE. Why will the migration fail?

- A. The source server name can't be the same as the destination server name.
- B. The source tree name must be the same as the destination tree name.
- C. The source tree name and the source server context must be the same as the destination tree name and destination tree context.
- D. You can't migrate a NetWare 5.1 server directly to NetWare 6.5. You must first upgrade it to a NetWare 6.0 server; then migrate it to NetWare 6.5.
- E. The source server context must be the same as the destination server context.

Answer: A

---

**QUESTION 163:**

Which products are installed in a Basic NetWare File Server patterned deployment?

(Choose 3.)

- A. CIFS/AFP
- B. MySQL
- C. Rsync
- D. Tomcat 4
- E. Virtual Office
- F. Pervasive SQL

Answer: A,D,F

---

**QUESTION 164:**

CORRECT TEXT

In NetWare 6.5, you can configure all services to use a common password, called \_\_\_\_\_.

Answer: UNIVERSALPASSWORD

---

**QUESTION 165:**

Which products are required to deploy and host Java Server Pages (JSPs)? (Choose 2.)

- A. Apache Web Server 2
- B. Rsync
- C. Virtual Office
- D. iSCSI
- E. Tomcat 4

Answer: A,E

---

**QUESTION 166:**

How many split or move requests can be concurrently processed on a NetWare 6.5 server?

- A. Six
- B. Four
- C. One
- D. Two
- E. Three
- F. Five
- G. Unlimited

Answer: B

---

**QUESTION 167:**

If the Virtual Office management role doesn't appear in iManager after installing the product on your NetWare 6.5 server, which iManager modules should be installed to fix the problem? (Choose 2.)

- A. VIRTUALOFFICEADMIN.NPM
- B. VIROFF.NPM
- C. VIRTUALOFFICEADM.NPM
- D. VIROFFADM.NPM
- E. VO.NPM
- F. VOAADMIN.NPM
- G. VIRTUALOFFICE.NPM

Answer: A,G

---

**QUESTION 168:**

You're configuring your Virtual Office implementation on your NetWare 6.5 server to provide secure access to NetStorage services hosted on a different server, DA3.DA.com. Which is the correct URL to enter in the NetStorage tab in the Services Administration task?

- A. https://DA3.DA.com
- B. https://DA3.DA.com:443
- C. https://DA3.DA.com:443/NetStorage
- D. http://DA3.DA.com:443/NetStorage
- E. http://DA3.DA.com/NetStorage

Answer: C

---

**QUESTION 169:**

Which utility is used to verify that each server has the cryptographic keys necessary to securely communicate with the other servers in the tree?

- A. MONITOR.NLM
- B. PKICHECK.NLM
- C. SDINOTES.NLM
- D. SECUREDIAG.NLM
- E. SDIDIAG.NLM
- F. SECURE.NLM
- G. CONFIG.NLM

Answer: E

---

**QUESTION 170:**

You're installing NetWare 6.5 on server hardware that has a hard disk drive and a tape drive connected to a SCSI adapter. It also has a CD drive connected to the motherboard's built-in IDE adapter. How many .CDM drivers should be detected and loaded during the NetWare 6.5 installation?

- A. 2 SCSI device drivers and 1 IDE device driver.
- B. 1 SCSI device driver; IDE devices don't require .CDM drivers.
- C. 2 SCSI device drivers; IDE devices don't require .CDM drivers.
- D. 1 SCSI and 1 IDE device driver.
- E. 1 IDE device driver; SCSI devices don't require .CDM drivers.

Answer: A

---

**QUESTION 171:**

What must you do before modifying the stored-on pool associated with an original pool?

- A. Delete all existing snapshots of the original pool.
- B. Create a new stored-on pool and copy all existing snapshots of the original pool to it.
- C. Deactivate the stored-on pool.
- D. Rebuild the original pool; then deactivate the stored-on pool.

Answer: A

---

**QUESTION 172:**

When you upgrade a NetWare 5.1 server to NetWare 6.5, what happens to the NetWare 5.1 server's Enterprise Web Server?

- A. It is used to provide NetWare 6.5 web services instead of Apache Web Server.
- B. It is reconfigured to use IP ports 81 and 444.
- C. It is removed and its configuration parameters are migrated to the Apache Web Server's configuration file.
- D. It is reconfigured to use a secondary IP address.

Answer: C

---

**QUESTION 173:**

Which products can be implemented with Apache Web Server 2 on NetWare 6.5 to provide functionality beyond that which is possible with scripting languages? (Choose 2.)

- A. Novell Script for NetWare (NSN)
- B. Web Search Server

- C. Active Server Pages (ASP)
- D. PHP
- E. Novell exteNd Application Server
- F. Enterprise Web Server
- G. Jakarta-Tomcat

Answer: E,G

---

**QUESTION 174:**

What is the function of the rbsCollection object?

- A. Represents a container object that holds rbsTask and rbsBook objects.
- B. Represents a leaf object used for ACL assignments.
- C. Specifies the tasks that users who are members are authorized to perform.
- D. Represents a container object that holds all RBS Role and Module objects.
- E. Represents a leaf object that holds a specific function.

Answer: D

---

**QUESTION 175:**

You've just completed a Remote Upgrade to NetWare 6.5 on 4 servers ( Certkiller 1, Certkiller 2, Certkiller 3, and Certkiller 4) in your tree. Your tree has two partitions. Certkiller 1 has a master replica of each partition. Certkiller 2 and Certkiller 3 each have a read/write replica of each partition. Certkiller 4 has a filtered replica of the second partition. Which servers need to have an Unattended Full Repair run on them as part of the post-upgrade process?

- A. Certkiller 4
- B. Certkiller 1, Certkiller 2, and Certkiller 3
- C. Certkiller 2 and Certkiller 3
- D. Certkiller 1 and Certkiller 4
- E. Certkiller 1, Certkiller 2, Certkiller 3, and Certkiller 4
- F. Certkiller 1
- G. Certkiller 2, Certkiller 3, and Certkiller 4

Answer: E

---

**QUESTION 176:**

Where is the information entered in the Company Info tab displayed in the Virtual Office home page?

- A. In the Company field
- B. Under the Organizational Information heading



- C. In the Company Info field
- D. In the Company Press Room field
- E. In the Notes field
- F. Under the About Us link
- G. In the Company Contacts field

Answer: C

---

**QUESTION 177:**

Which product can you use to access previous versions of a file created by Archive and Versioning Services?

- A. Remote Manager
- B. iFolder
- C. NetStorage
- D. ConsoleOne
- E. iManager

Answer: C

---

**QUESTION 178:**

Which command is used to load the iSCSI target service on a NetWare 6.5 server?

- A. ION
- B. TARON
- C. ITAR
- D. TARGET
- E. TON
- F. SCSITAR

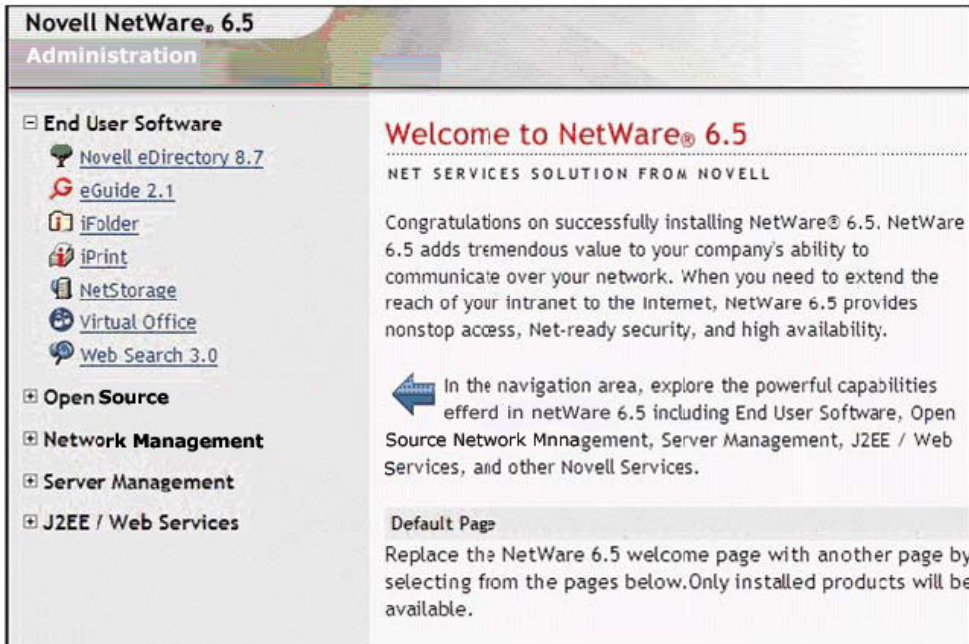
Answer: E

---

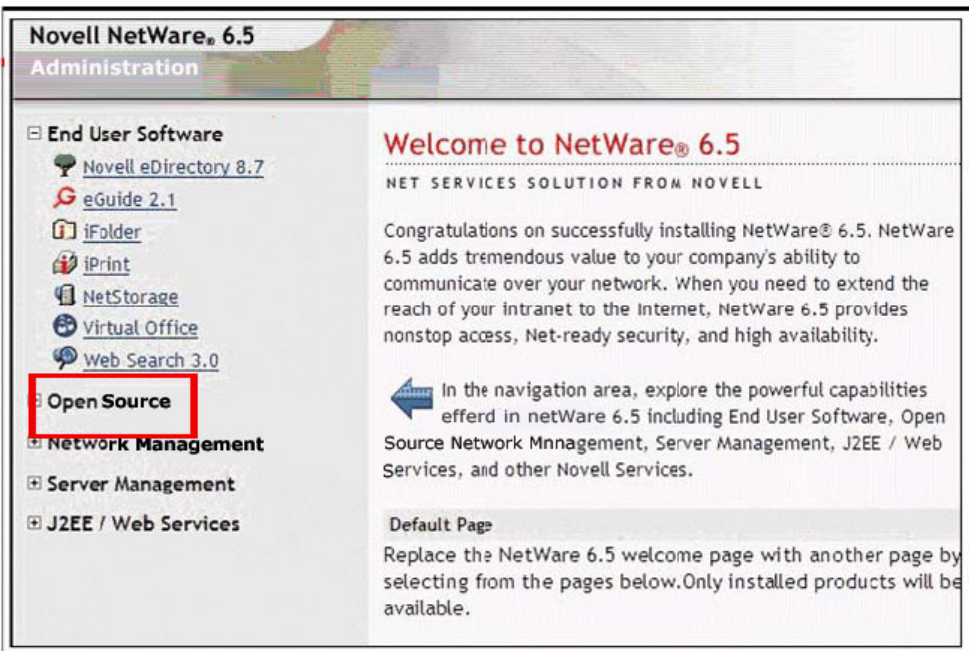
**QUESTION 179:**

HOTSPOT

Click on the option you would use to start Apache Manager.



Answer:



### QUESTION 180:

While migrating a NetWare 5.1 server to NetWare 6.5 using a Windows XP Professional workstation with Novell Client 4.83 installed, the migration fails. Given that the destination server has Universal Password deployed, what is the cause of the problem?

- A. NMAS must be disabled on the Novell Client 4.83 to be compatible with Universal Password.
- B. Windows XP isn't compatible with Universal Password.

- C. The Migration Wizard isn't compatible with Windows XP Professional.
- D. Universal Password requires Novell Client 4.9 or later.
- E. Novell Client 4.83 requires NCI 2.0.2 or later installed to be compatible with Universal Password.

Answer: D

---

**QUESTION 181:**

What is the role of DirXML Matching Rules? (Choose 2.)

- A. Controls the way data flows from one system to another.
- B. Maps the names of attributes and classes between eDirectory and the external application.
- C. Establishes associations between an existing entry in eDirectory and an existing entry in the external application.
- D. Determines the location of the new object in eDirectory or in the external application during an Add Object event.
- E. Locates an existing object that matches the object generating the event.
- F. Controls whether an object will be added during an Add event based on the existence of required attribute values.

Answer: C,E

---

**QUESTION 182:**

What is the function of the rbsTask object?

- A. Represents a leaf object that holds a specific function.
- B. Represents a container object that holds rbsTask and rbsBook objects.
- C. Represents a container object that holds all RBS Role and Module objects.
- D. Represents a leaf object used for ACL assignments.
- E. Specifies the tasks that users (members) are authorized to perform.

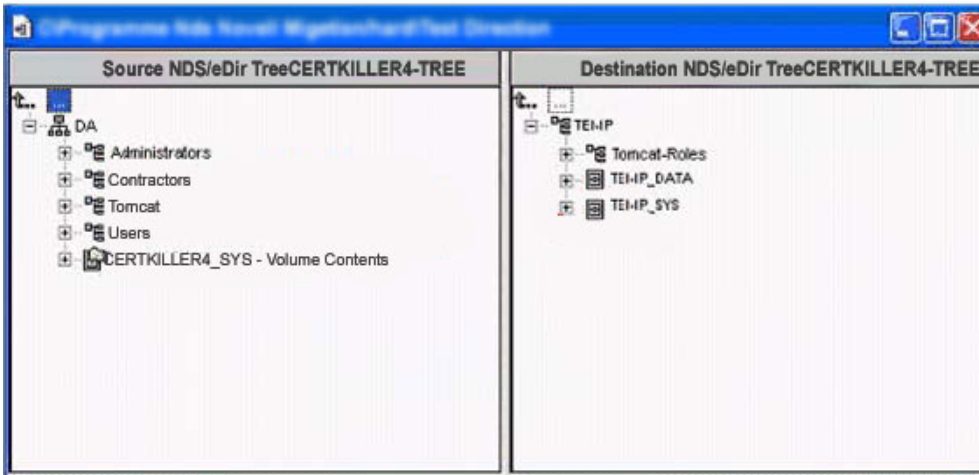
Answer: A

---

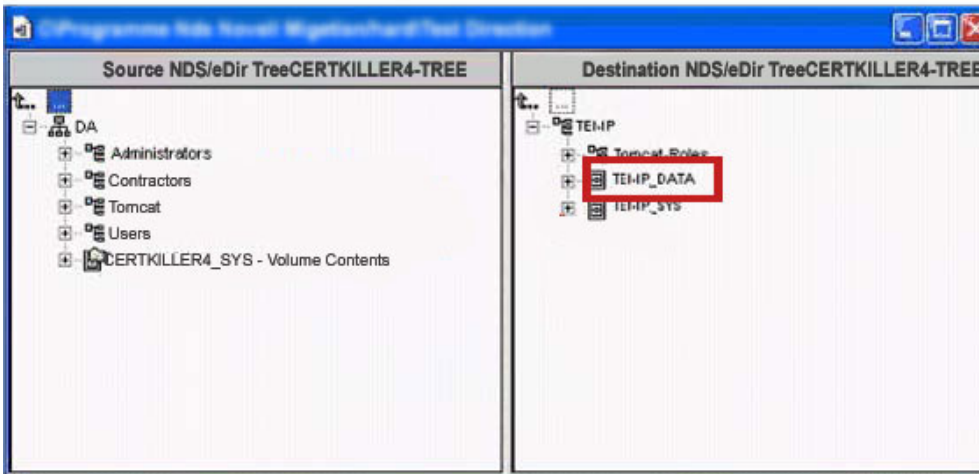
**QUESTION 183:**

HOTSPOT

Click on the location where you would drop the contents of the SYS volume on the source server if you wanted them to be migrated to DA4\_DATA on the destination server.



Answer:



#### QUESTION 184:

You are consolidating a NetWare 5.1 server to NetWare 6.5. After completing the process, you notice that many files on the destination server are smaller than the source files on the source server. What is the resolution to this problem?

- A. Download and run the latest SMDR.NLM and TSAs on both servers.
- B. Wait for eDirectory to synchronize.
- C. Verify that NDPSM.NLM has been loaded on both servers.
- D. Enable binary comparison.
- E. Verify that SLP is working correctly on both servers.

Answer: A

#### QUESTION 185:

Which is a key component of NetWare 6.5's Web Application Services, providing a foundation for deploying web-based applications?

- A. iSCSI
- B. MySQL
- C. exteNd Application Server
- D. Novell Storage Services
- E. Virtual Office
- F. Archive and Versioning Services
- G. DirXML

Answer: C

---

**QUESTION 186:**

CORRECT TEXT

Using Nterprise Branch Office, visiting users from the home office can log in to the local Branch Office Appliance using \_\_\_\_\_, a patented Novell technology that leverages LDAP.

Answer: USERACCESSPROVISIONING

---

**QUESTION 187:**

What command is used from the server console to start the Apache Manager service?

- A. WEBMANUP
- B. APACHEADM
- C. AP2WEBMAN
- D. NVXADUP
- E. AP2WEBMANUP
- F. WEBMAN
- G. ADMINWEB

Answer: C

---

**QUESTION 188:**

Where are configuration parameters for the Apache Web Server 2 stored on a NetWare 6.5 server?

- A. SYS:\ETC\HTTPD.CONF
- B. SYS:\APACHE2\CONF\HTTPD.CONF
- C. SYS:\ETC\APACHE.CONF
- D. SYS:\ETC\HTTPD\HTTPD.CONF
- E. SYS:\APACHE2\CONF\APACHE.CONF

F. SYS:\ETC\APACHE2\HTTPD.CONF

Answer: B

---

**QUESTION 189:**

How many snapshots can exist on a particular stored-on pool?

- A. 250
- B. 10
- C. 100
- D. 1000
- E. 500
- F. 50

Answer: E

---

**QUESTION 190:**

You're installing the Branch Office Appliance software on older server hardware that doesn't support bootable CD drives. How can you install the software?

- A. You can't install the Appliance software without a bootable CD
- B. Create a bootable diskette and install the appropriate DOS CD drivers on it.
- C. Create a bootable diskette and install the IPCONN drivers from the Novell Client CD on it; then install across the wire from another server.
- D. Mount the installation CD as a volume on another NetWare server, then configure a bootable diskette with the IP Server Connection Utility from the Novell Client CD and install over the wire.

Answer: A

---

**QUESTION 191:**

Which files provide Remote Manager services on a NetWare 6.5 server? (Choose 2.)

- A. NICISDI.XLM
- B. HTTPSTK.NLM
- C. RMAN.NLM
- D. PORTAL.NLM
- E. TC4.NCF
- F. APACHE2.NLM
- G. NDSIMON.NLM

Answer: B,D

---

**QUESTION 192:**

Which files are created in SYS:\ETC when a server has been designated as host for the NSS VLDB service? (Choose 3.)

- A. VLRPR.LOG
- B. VLDB.NLM
- C. VLDB.CFG
- D. VLDB.DAT
- E. VLDB.CONF
- F. VLDBCFG.DAT

Answer: A,D,F

---

**QUESTION 193:**

Which products are installed in a Pre-Migration Server patterned deployment? (Choose 3.)

- A. MySQL
- B. Tomcat 4
- C. Remote Manager
- D. UDDI
- E. Storage Management Services
- F. eDirectory 8.7

Answer: C,E,F