



Exam : E20-582

Title : Storage Management Specialist Exam For Storage Administrator

Ver : 10-24-08

QUESTION 1:

Which CLARiiON object is a logical grouping of disks that work together to store data?

- A. Storage group
- B. RAID group
- C. Disk group
- D. Volume group

Answer: B

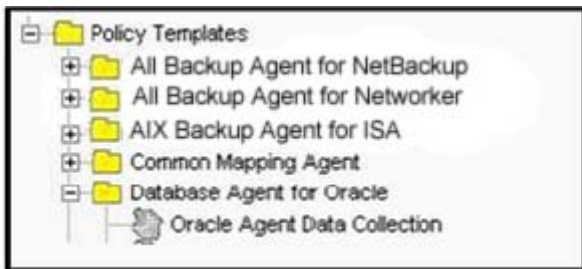
QUESTION 2:

Click the Exhibit button.

You just finished pushing and configuring an Oracle agent. You realize that you are not collecting the level of Oracle information you expect to see. You look at the left hand side of the ControlCenter Console under Policy Templates and find the Oracle Agent Data Collection Policy.

How do you proceed?

Exhibit:



- A. On Oracle Data Collection, right-click Edit, on Action tab select appropriate schedule, click OK
- B. On Oracle Data Collection, right-click New, name the Collection Policy, click OK
- C. On Oracle Data Collection, right-click Properties, select Enable, click OK
- D. On Oracle Data Collection, right right-click Edit, select Enable, click OK

Answer: B

QUESTION 3:

You are a Storage Administrator and have to set up storage pools. Which three [3] rules apply?

- A. A pool can contain either devices or other storage pools
- B. A pool cannot contain devices across multiple arrays and array types
- C. A storage device will be removed from a pool after allocation
- D. A pool can contain specific devices or entire arrays
- E. A storage device can be moved between pools

Answer: A,D,E

QUESTION 4:

What are the two [2] main report categories in the StorageScope main screen?

- A. Chargeback
- B. Billed customers
- C. Allocated storage
- D. Infrastructure
- E. Service consumers

Answer: D,E

QUESTION 5:

What are two [2] statements that describe multihoming and cluster support with EMC ControlCenter?

- A. The ControlCenter installation program requires manual input to specify the multiple interface connections
- B. Multihoming is optional if you plan to install ControlCenter with Cluster Support
- C. Multihoming is typically used for LAN traffic management
- D. ControlCenter supports Adapter Teaming (Grouping network adapter ports for a connection to a single physical segment)
- E. ControlCenter is supported on hosts that have multiple network interface cards (NICs) or one NIC with multiple interface connections

Answer: B,E

QUESTION 6:

Which three [3] items can be configured in a VisualSRM Report Job?

- A. List of Reports
- B. Data gathering schedule
- C. Threshold trigger levels
- D. Report output format
- E. Report generation schedule

Answer: A,D,E

QUESTION 7:

Which three [3] items are features of VisualSRM?

- A. Wizards
- B. Windows Management Instrumentation (WMI) integration
- C. Automated data collection
- D. De-centralized data repository
- E. Remote agent install

Answer: A,C,E

QUESTION 8:

DRAG DROP

Click the Task button.

Arrange in order the tasks performed to plan your EMC ControlCenter environment.

Exhibit:

Order	Tasks in Order	Select from these
1	(place step one here)	Select infrastructure server hardware
2	(Place step two here)	Determine infrastructure configuration type (single or distributed)
3	(Place step three here)	Determine overall installation size of your environment
4	(Place step four here)	Determine installation size of managed objects
5	(Place step five here)	Confirm support of potential managed objects using the Support Matrix found on Powerlink
6	(Place step five here)	List all assets with detailed information (HBAs, IP addresses, driver versions, software versions, etc.)

Answer:

Order	Tasks in Order
1	List all assets with detailed information (HBAs, IP addresses, driver versions, software versions, etc.)
2	Confirm support of potential managed objects using the support Matrix found on powerlink
3	Select infrastructure server hardware
4	Determine overall installation size of your Enviroment
5	Determine installation size of managed objects
6	Determine infrastructure configuration type (single or distributed)

QUESTION 9:

Which action must be performed to collect Console logging information?

- A. Select Monitoring / Command History and then select File / Export
- B. Right click the user profile, select Edit and click the "Enable console logging" checkbox
- C. When the console starts, Select File, Console Options and select the "Enable console logging" checkbox
- D. When starting the console click the "Enable console logging" checkbox before clicking "Submit" on the ControlCenter Launch Utility Screen
- E. Use the ELU utility to collect the log files

Answer: D

QUESTION 10:

When would you utilize VisualSRM?

- A. Extend your Oracle tablespace
- B. View array unconfigured capacity
- C. Clean up non-business data
- D. Troubleshoot your SAN

Answer: C

QUESTION 11:

Host Managed Objects in the console are created when a Master Agent is installed on the host and started. What is another way that a Host Managed Object can appear in a ControlCenter Console?

- A. ESN Manager Migration
- B. Connectivity Discovery
- C. Host Agent Installation
- D. Assisted Discovery of an array

Answer: A

QUESTION 12:

You are planning a ControlCenter 5.1.2 that must meet the following requirements:

- Support for 12 medium sized Symmetrix arrays
- Storage Agents for Symmetrix on production hosts
- Support for redundant Storage Agents for Symmetrix

- WLA Archiver

What is the minimum number of Symmetrix agents you need to deploy to meet the above criteria?

- A. 12
- B. 10
- C. 8
- D. 6

Answer: A

QUESTION 13:

What is the default discovery interval in VisualSAN?

- A. 30 minutes
- B. 60 minutes
- C. 15 minutes
- D. 24 hours

Answer: A

QUESTION 14:

Which two [2] functions are performed by the ControlCenter Store component?

- A. Maintains report layouts for custom StorageScope reports
- B. Streamlines insertion of configuration changes to the Repository
- C. Facilitates installation of ControlCenter Consoles
- D. Writes persistent data collected by agents to the Repository

Answer: B,D

QUESTION 15:

Which two [2] methods does Event Monitor allow CLARiiON error notifications?

- A. Alarms
- B. SNMP traps
- C. Electronic mail (email)
- D. TCP/IP

Answer: B,C

QUESTION 16:

Which statement best describes CLARiiON metaLUN expansion?

- A. A metaLUN cannot be expanded
- B. Only a concatenated metaLUN can be expanded
- C. A metaLUN can be expanded
- D. Only a striped metaLUN can be expanded

Answer: C

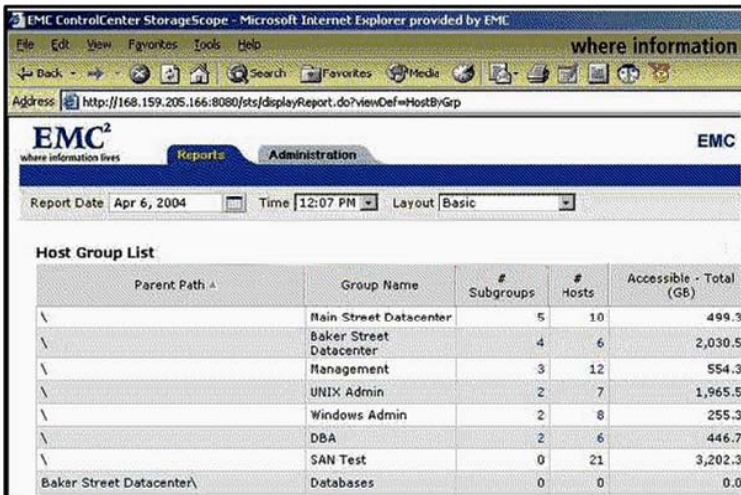
QUESTION 17:

Click the Exhibit button.

StorageScope reporting has the ability to create reports based on predefined groups.

Where must you create these groups?

Exhibit:



The screenshot shows the EMC ControlCenter StorageScope web interface in Microsoft Internet Explorer. The browser address bar shows the URL: http://168.159.205.166:8080/sts/displayReport.do?viewDef=HostByGp. The page has a navigation bar with 'Reports' and 'Administration' tabs. Below the navigation bar, there are filters for 'Report Date' (Apr 6, 2004), 'Time' (12:07 PM), and 'Layout' (Basic). The main content area displays a 'Host Group List' table.

Parent Path	Group Name	# Subgroups	# Hosts	Accessible - Total (GB)
\	Main Street Datacenter	5	10	499.3
\	Baker Street Datacenter	4	6	2,030.5
\	Management	3	12	554.3
\	UNIX Admin	2	7	1,965.5
\	Windows Admin	2	8	255.3
\	DBA	2	6	446.7
\	SAN Test	0	21	3,202.3
Baker Street Datacenter\	Databases	0	0	0.0

- A. StorageScope API
- B. ControlCenter Console
- C. ControlCenter API
- D. StorageScope Console

Answer: B

QUESTION 18:

You want to use ControlCenter to monitor and manage CLARiiON in your SAN environment. Which two [2] host requirements must be met in order to install your Storage Agent for CX series CLARiiON?

- A. IP connection to the CLARiiON array
- B. NaviCLI installed on host with Storage Agent for CLARiiON running in Proxy Mode
- C. NaviCLI installed on host with the Storage Agent for CLARiiON
- D. In-band connection to the CLARiiON array

Answer: A,C

QUESTION 19:

After installing and configuring the ControlCenter Integration Package, what are two [2] additional steps that must be performed in order to have SNMP traps sent to the third-party frameworks software?

- A. Install SNMP MIB protocol
- B. Create a management policy to use SNMP
- C. Create SNMP management server
- D. Modify alerts to use the management policy

Answer: B,D

QUESTION 20:

What are the four [4] types of Workload Analyzer-related Data Collection Policies that can be configured and enabled within the ControlCenter Console?

- A. WLA Daily
- B. WLA Analyst
- C. WLA Revolving
- D. WLA Summary
- E. WLA Retention
- F. WLA Scheduled

Answer: A,B,C,E

QUESTION 21:

On which two [2] arrays can ControlCenter perform device management?

- A. Hitachi Data Systems (HDS)
- B. CLARiiON
- C. IBM Shark
- D. Symmetrix

Answer: B,D

QUESTION 22:

Which ControlCenter process writes persistent data collected by the agents to the Repository?

- A. Enhydra
- B. Console
- C. Services
- D. Store

Answer: D

QUESTION 23:

Where in a ControlCenter environment are Data Collection Policies executed?

- A. On the host where the Agent is running
- B. On the host where the Repository is running
- C. On the host where the Server is running
- D. On the host where the Store is running

Answer: A

QUESTION 24:

A portion of your user community is experiencing performance issues every Friday from 3:00 PM to 4:00 PM. You have determined that the servers experiencing this issue are all connected to the same Symmetrix. You determine that WLA is the best tool to analyze the performance on the Symmetrix during this time period. You determine that the only WLA DCP currently enabled is WLA Daily with the default interval. What is the best method for determining the cause of this issue?

- A. In the Console left hand tree under Administration\Data Collection Policies\Policy Templates\Workload Analyzer Archiver\WLA Revolving create and utilize a new WLA Revolving Collection
- B. In the Console left hand tree under Administration\Data Collection Policies\Policy Templates\Storage Agent for Symmetrix\WLA Analyst create and utilize a new WLA Analyst Collection
- C. In the Console left hand tree under Administration\Data Collection Policies\Policy Templates\Workload Analyzer Archiver\WLA Analyst create and utilize a new WLA Analyst Collection
- D. Utilize the currently enabled WLA Daily Collection with default interval.

Answer: B

QUESTION 25:

What are two [2] consequences of destroying a CLARiiON metaLUN?

- A. The metaLUN is removed from the storage group
- B. ALL LUNs within a metaLUN are unbound

- C. All data of a metaLUN is lost
- D. The individual LUNs that comprised the metaLUN remain intact

Answer: B,C

QUESTION 26:

Click the Exhibit button.

On the Alerts View shown, the storage administrator has received several alerts from ControlCenter regarding the power subsystem on Symmetrix 000183600408. Which action was taken?

Exhibit:

Option Name	Message	Created
000183600408	Power Subsystem Error 24V...	05/07/2002 18:18:00
000183600408	Power Subsystem Error 24V...	05/07/2002 18:18:00
000183600408	Power Subsystem Error - S...	05/07/2002 18:06:00
000183600408	Power Subsystem Error 24V...	05/07/2002 18:06:00
000183600408	power subsystem Error 24V...	05/07/2002 17:38:00
000183600408	The Service processor equal...	06/02/2002 14:02:00
001	RAID device not ready - 0001...	05/07/2002 15:42:00
01E	RAID device not ready - 0001...	05/07/2002 15:18:00
03D	RAID device not ready - 0001...	05/07/2002 17:56:00
03D	Volume not ready - 00018360...	05/07/2002 16:20:00
Agent-LOSEL185...	Symmetrix Agent agent has...	05/12/2002 16:27:04
Agent-LOSEL185...	MCA agent has become inac...	05/12/2002 16:27:04
Agent-WANG124...	Storage Agent for CLARION...	05/07/2002 13:45:18

- A. The alert was cleared
- B. The severity level changed to 4
- C. A note was attached
- D. An autofix was executed

Answer: C

QUESTION 27:

When sizing the VisualSRM database server, what is the estimated database space needed for 1 Terabyte of scanned data?

- A. 3.5 GB
- B. 0.5 GB
- C. 0.8 GB
- D. 1.3 GB

Answer: D

QUESTION 28:

DRAG DROP

Click the Task button.

You have a distributed ControlCenter Infrastructure environment where the Server, Store and Repository components are each on their own dedicated servers.
What is the correct startup order for these components?

Exhibit:

Components in Order		Select from these
1	(place here)	Store
2	(place here)	Server
3	(place here)	Repository

Answer:

Components in Order	
1	Repository
2	Server
3	Store

QUESTION 29:

You have a Storage Pool Named eymmetrix RAID1 devices . Within this pool you have placed twenty [20] RAID1 devices that are 10GB in size and twenty [20] RAID1 devices that are 20GB in size. When you create your Allocation Task, you specified that you want to have at least 30GB of storage allocated to your host. Which devices will ControlCenter recommend for allocation?

- A. One 30GB device
- B. One 20GB device and one 10GB device
- C. Three 10GB devices
- D. Two 20GB devices

Answer: D

QUESTION 30:

Which three [3] file formats are supported by VisualSRM Report jobs?

- A. Portable Document Format (.pdf)

- B. Comma Separated Values (.csv)
- C. Microsoft Excel Spreadsheet (.xls)
- D. Microsoft Word Document (.doc)
- E. Extensible Markup Language (.xml)

Answer: A,C,E

QUESTION 31:

In the Navisphere GUI, which tab of the Storage System Properties window do you use to set the high watermark?

- A. Memory
- B. Cache
- C. Storage Access
- D. General

Answer: B

QUESTION 32:

When using a host name to log into the ControlCenter Console, which three [3] elements are required for Console communication with the ControlCenter Server?

- A. Name Resolution of the Repository host
- B. Secure Shell (ssh)
- C. IP connectivity to ControlCenter Server
- D. Microsoft Internet Explorer
- E. Login ID & Password for ControlCenter Server

Answer: A,C,E

QUESTION 33:

From where does StorageScope extract its data?

- A. ControlCenter Repository
- B. The server running the WLA Archiver
- C. StorageScope agents
- D. StorageScope internal database

Answer: A

QUESTION 34:

You are looking at the ControlCenter Console. In the tree on the left hand side of the

Console under Hosts you see that your host has been discovered. Which four [4] communication steps have taken place between the ControlCenter tiers to allow your host to be viewed in the Console?

- A. Store forwards information to the Repository
- B. Master Agent collects data and forwards it to the Store
- C. Console requests information from the Server
- D. Server retrieves information from the Repository
- E. Server retrieves information from the Store
- F. Store forwards information to the Server

Answer: A,B,C,D

QUESTION 35:

Within ControlCenter, which requirement applies when adding protection to an unprotected logical device?

- A. A BCV of equal size
- B. Unconfigured space greater than or equal to the unprotected device
- C. A second unprotected device of equal size
- D. Cannot add protection to unprotected devices

Answer: C

QUESTION 36:

Which three [3] components are necessary to monitor and control Symmetrix TimeFinder group operations?

- A. SDM agent
- B. Symmetrix Agent
- C. Solutions Enabler
- D. Host agent
- E. Master agent

Answer: B,C,E

QUESTION 37:

VisualSAN Configuration Manager can compare a SAN configuration snapshot to the live SAN environment or to previous captures. How many previous captures can be compared?

- A. 2
- B. User-defined

- C. 3
- D. 1

Answer: A

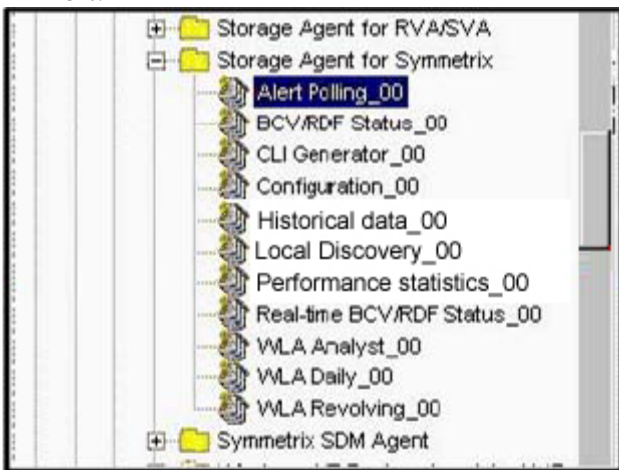
QUESTION 38:

Click the Exhibit button.

A portion of your user community is experiencing performance issues every Friday from 3:00 PM to 4:00 PM. You have determined that the servers experiencing this issue are all connected to the same Symmetrix.

You need to select an appropriate Data Collection policy to monitor the performance on the Symmetrix during this time period. Which Data Collection Policy should you use?

Exhibit:



- A. WLA Revolving
- B. Performance Statistics
- C. WLA Analyst
- D. Configuration

Answer: C

QUESTION 39:

As the storage administrator, you are tasked with updating Host Bus Adapter (HBA) drivers. Which tool allows you to inventory all current HBA driver versions?

- A. EMC Control Center Storagescope
- B. EMC Solutions Enabler
- C. EMC Control Center SAN Manager
- D. EMC Control Center VisualSRM

Answer: A

QUESTION 40:

DRAG DROP

Click the Task button.

Your management has tasked IT to provide chargeback summary on fileserver utilization.

In what order would you deliver this automated function using VisualSRM?

Exhibit:

Order	Tasks in Order	Select from these
1	(place step one here)	Add schedule
2	(Place step two here)	Create task list
3	(Place step three here)	Create filegroups
4	(Place step four here)	Execute Task list
5	(Place step five here)	Associate chargeback value
6	(place step sex here)	Identify logical grouping of resources

Answer:

Order	Tasks in Order
1	Identify logical grouping of resources
2	Create filegroups
3	Associate chargeback value
4	Create task list
5	Add schedule
6	Execute Task list

QUESTION 41:

Which three [3] characteristics describe the ControlCenter Repository?

A. A repository for historical data

- B. An embedded Oracle database
- C. A single unique component in a ControlCenter Infrastructure
- D. A component which maintains storage configuration data in real time
- E. An embedded SQL database

Answer: A,B,C

QUESTION 42:

Which cluster configuration is supported for the installation of ControlCenter components?

- A. Active/Active dual node
- B. Active/Passive single node
- C. Active/Active single node
- D. Active/Passive dual node

Answer: D

QUESTION 43:

Which three [3] tasks must be performed by the storage administrator before SPS (Storage Provisioning Services) can be used on a Symmetrix?

- A. Storage policies must be defined
- B. SPS User(s) must be properly authorized
- C. SymACL must be set on the Symmetrix
- D. Symconfigure must be enabled
- E. Storage pools must be created and populated

Answer: A,B,E

QUESTION 44:

A User creates a temporary file that causes the free space on a volume to drop below a trigger value. As the storage admin you may want to know about the condition only if the free space remains low for several hours and not when it temporarily dips. How do you implement this through ControlCenter?

- A. Change severity thresholds
- B. Change the efore settings
- C. Disable Alert Definition
- D. Disable Severity level

Answer: B

QUESTION 45:

You have two [2] small Symmetrix arrays, four [4] Windows hosts, two [2] Solaris hosts in your single datacenter. One [1] of your Solaris hosts has two [2] Oracle databases. You also have one [1] Oracle database each on two [2] of your four [4] Windows hosts. What is the number of ControlCenter agents that need to be deployed to monitor and manage this SAN environment?

- A. Two Storage Agents for Symmetrix, three Host Agents for Windows, two Host Agents for Solaris, and three Oracle Database Agents
- B. One Storage Agent for Symmetrix, four Host Agents for Windows, two Host Agents for Solaris, and four Oracle Database Agents
- C. One Storage Agent for Symmetrix, four Host Agents for Windows, two Host Agents for Solaris, and three Oracle Database Agents
- D. Two Storage Agents for Symmetrix, four Host Agents for Windows, two Host Agents for Solaris, and two Oracle Database Agents

Answer: C

QUESTION 46:

Which three [3] VisualSRM features provide powerful user customization capabilities?

- A. VisualSRM Server
- B. Dashboard
- C. Snapshots
- D. Report Layout
- E. Filtered Reports

Answer: B,C,E

QUESTION 47:

What are two [2] features of ControlCenter SAN Manager?

- A. Discovery and monitoring of storage networks and their components to detect and respond to error conditions
- B. Ability to run ControlCenter in a secure fabric for DATA, Cisco and Brocade fabrics
- C. Ability to manage and zone DATA/Connectrix, Brocade, QLogic and Cisco switches, as well as mixed fabrics, including the ability to import active/inactive zoning elements during discovery
- D. Assisted Discovery feature to assist ControlCenter agents that do not perform automated discovery of switches

Answer: A,D

QUESTION 48:

Which two [2] statements apply to a CLARiiON LUN (not a metaLUN)?

- A. It is in a single RAID group that has a single RAID type
- B. It is in a single RAID group that can have mixed RAID types
- C. It is assigned to only one SP
- D. It is assigned to multiple SPs

Answer: A,C

QUESTION 49:

Primary fileserver usable capacity is extremely low. Which three [3] VisualSRM features allow you to escalate this condition to management?

- A. Thresholds
- B. Event logs
- C. Task lists
- D. Alert Groups
- E. Alert Recipients

Answer: A,D,E

QUESTION 50:

Which task must you perform so that a VisualSRM Intelligent Action can locate and operate on files not accessed in 30 days?

- A. Enable trending for a minimum of 30 days
- B. Run the "File Details by Date" report, filtering out files accessed in the past 30 days
- C. Enable a threshold for the relevant folders
- D. Ensure that the relevant folders are included in a file scan

Answer: D

QUESTION 51:

What does a host need for VisualSRM to report on storage utilization?

- A. File System
- B. Storage Agent
- C. CLARiiON
- D. SAN (Storage Area Network)

Answer: A

QUESTION 52:

Which two [2] possible actions should you consider taking when a ControlCenter Store is overloaded?

- A. Add ControlCenter Master Agents
- B. Increase the frequency of the Data Collection Policies (DCPs)
- C. Add a ControlCenter Store
- D. Distribute Data Collection Policies (DCPs)
- E. Add a ControlCenter Server

Answer: C,D

QUESTION 53:

Which three [3] Microsoft Exchange items can you report on in VisualSRM?

- A. Private/Public Email Folders
- B. Individual email message size
- C. Exchange Personal Folders
- D. Number of Exchange subfolders
- E. Exchange Server consumed storage space

Answer: A,D,E

QUESTION 54:

You cannot get the Free Space view in the ControlCenter Console to work. What is the cause of the problem?

- A. You have to install a Service Pack
- B. The ARM License is not installed
- C. Free space view is a report in StorageScope, it is not a view in the Console
- D. You need to customize the Console to make it work

Answer: B

QUESTION 55:

When you install a Control Center agent, a set of alerts and notifications for that agent are enabled by default. Depending on the number of objects and agents that ControlCenter is monitoring and managing, you may have a high volume of Alert notifications to your Console Alerts View. Which two [2] best practices for Alert configuration and management should you use to reduce the volume of alerts in the Console Alerts View?

- A. Reduce the number of host agents
- B. Group similar alerts into a single Management Policy
- C. Disable redundant alerts
- D. Use Management Policy notifications to reduce the volume of alerts
- E. Modify templates to facilitate alert deletion

Answer: C,D

QUESTION 56:

In a Fibre Channel switched environment, which two [2] activities should you perform after completing an SDR operation? Assume that zoning is already configured.

- A. Set the new device state to pot Ready
- B. Perform LUN masking
- C. Set the new device state to "Write Disabled"
- D. Reconfigure the hosts to recognize the new devices that are available for access

Answer: B,D

QUESTION 57:

What three [3] ControlCenter tasks are necessary when zoning a host port to an array port that is already in use by other hosts?

- A. Use the Activate Zone function
- B. Create a new fabric
- C. Configure masking to allow host access to intended storage device
- D. Use the Activate Zone Set function
- E. Add host port and array port to a new zone

Answer: C,D,E

QUESTION 58:

A VisualSRM Database report fails to run. After verifying that the database exists and that the agent is properly installed, which three [3] tasks should you perform?

- A. Check scan policy
- B. Check VSRM Console login permissions
- C. Check alert settings
- D. Check Event log
- E. Check ODBC Data Sources

Answer: A,D,E

QUESTION 59:

Which two [2] functions does the ControlCenter Server perform within a ControlCenter configuration?

- A. Manages all communication between the Store and the Repository
- B. Processes data requests from the console
- C. Processes ControlCenter Repository maintenance tasks
- D. Allows you to install sub-agents on managed hosts

Answer: B,D

QUESTION 60:

Which three [3] objects can be actively managed by the ControlCenter Agent Tier?

- A. Storage Arrays
- B. IP Routers
- C. Host Bus Adapters (HBAs)
- D. Hosts
- E. Switches

Answer: A,D,E

QUESTION 61:

Which three [3] types of configuration change does ControlCenter support for a Symmetrix array?

- A. Port flag settings
- B. Restrict access to the VCMDB device
- C. SRDF device type definition
- D. Device protection definition
- E. Change device emulation

Answer: A,C,D

QUESTION 62:

You have a host system that cannot have agents installed. You want to use ControlCenter to create a Host object and associate an unidentified port on a switch with it for zoning and masking. How do you accomplish this task?

- A. In the Relationship-Host view, right-click the pane and select New <OS type> Host. The Create Host wizard appears with the selected host operating system as context

- B. In the Unidentified Port folder, right click on the port and select "assign port". When the wizard launches, select the host on which the HBA resides
- C. In the ControlCenter tree panel, right-click the Hosts folder, and select New, <OS type> Host. Enter the host name and select the Unidentified port to associate to this new object
- D. In the Topology view, select Action, New <OS type> Host. The Create Host wizard appears with the selected host operating system as context

Answer: C

QUESTION 63:

Which two [2] features of the CLARiiON are designed for data availability?

- A. RAID protection
- B. Global hot spare disks
- C. Private Storage Management (PSM) LUN
- D. Storage groups

Answer: A,B

QUESTION 64:

Which Navisphere tab of Storage System Properties allows you to set SPA & SPB statistics logging?

- A. Storage Access
- B. Cache
- C. Memory
- D. General

Answer: D

QUESTION 65:

Which EMC document contains ControlCenter Infrastructure hardware sizing requirements?

- A. ControlCenter 5.x Planning and Installation Guidelines
- B. ControlCenter 5.x Release Notes
- C. ControlCenter 5.x Support Matrix
- D. ControlCenter 5.x Performance and Scalability Guidelines

Answer: D

QUESTION 66:

Which section of the Navisphere GUI right-click menu allows for viewing CLARiiON faults?

- A. Storage System Properties
- B. Storage Objects
- C. Storage System Status
- D. Event Monitor Objects

Answer: C

QUESTION 67:

Which two [2] characteristics describe functions of ControlCenter sub-agents?

- A. Runs user commands for disk groups, volume and filesystem configuration
- B. Passes information updates to the Repository
- C. Displays control, monitoring, and performance data for managed objects
- D. Controls, collects data and monitors one or more storage objects

Answer: A,D

QUESTION 68:

Which UNIX host software component is required to support push-install of the VisualSRM Agent?

- A. Java (version 1.4 or above)
- B. Secure Shell (ssh)
- C. Perl
- D. File Transfer Protocol (FTP)

Answer: B

QUESTION 69:

What are three [3] important performance benefits of CLARiiON cache memory?

- A. Performing forced flushing of the cache
- B. Satisfying user read requests from cache
- C. Mirroring write cache
- D. Absorbing bursts of writes into cache
- E. Merging several writes to the same disk area into a single operation

Answer: B,D,E

QUESTION 70:

Which client application needs to be installed for SNMP support during ControlCenter installation?

- A. ControlCenter WLA Archiver
- B. ControlCenter Host agent
- C. ControlCenter Storage Agent for HDS
- D. ControlCenter Integration Packages

Answer: D

QUESTION 71:

Which three [3] factors affect ControlCenter performance and scalability?

- A. Number of installed Repositories
- B. Number of available users
- C. Type, number, and size of managed objects
- D. Number of active Consoles
- E. System resources available to the ControlCenter Infrastructure components (ECC Server, Repository, and Store)

Answer: C,D,E

QUESTION 72:

DRAG DROP

You work as a network administrator at Certkiller .com. You study the exhibit carefully. Match the agent with the object that it manages.

Agent	Object
(place here)	VCMDB
(place here)	DS-16B
(place here)	Celerra
(place here)	Symmetrix
(place here)	SQL Database

Symmetrix SDM Agent

Storage Agent for NAS

Storage Agent for Celerra

Database Agent for SQL

Common Mapping Agent

Switch Agent for Brocade

Storage Agent for Symmetrix

Fibre Channel Connectivity Agent

Answer:

Agent	Object
Symmetrix SDM Agent	VCMDB
Fibre Channel Connectivity Agent	DS-16B
Storage Agent for NAS	Celerra
Storage Agent for Symmetrix	Symmetrix
Storage Agent for Celerra	SQL Database

Explanation:

QUESTION 73:

DRAG DROP

Click the Task button.

Based on the diagram, match the agents to the correct hosts.

Exhibit:

Object	Agent
VCMDB	(place here)
DS-16B	(place here)
Celerra	(place here)
Symmetrix	(place here)
SQL Database	(place here)

Select from these
Symmetrix SDM Agent
Storage Agent for NAS
Storage Agent for Celerra
Database Agent for SQL
Common Mapping Agent
Switch Agent for Brocade
Storage Agent for Symmetrix
Fibre Channel Connectivity Agent

Answer:

Object	Agent
VCMDB	Symmetrix SDM Agent
DS-16B	Fibre Channel Connectivity Agent
Celerra	Storage Agent for NAS
Symmetrix	Storage Agent for Symmetrix
SQL Database	Database Agent for SQL

QUESTION 74:

Which description best describe Data Collection Policies (DCP's)?

- A. A formal set of statements that collects object data via ControlCenter agents
- B. A set of schedules to send SNMP traps to third-party frameworks
- C. A set of schedules to retrieve data from the Repository
- D. A formal set of statements that manages object data via ControlCenter agents

Answer: A

QUESTION 75:

DRAG DROP

Click the Task button.

Match the minimum requirements to each switch discovery.

Exhibit:

Switch	Minimum Requirement	Select from these
MDS 9216 (Cisco switch)	(place here)	IP Address of service processor
ED-64M (Data 64 port Director)	(place here)	IP Address of switch, Username and password
DS-16B (Brocade 16 port switch)	(place here)	IP Address of Proxy, Username and password
		IP Address of CTP card, Username and password

Answer:

Switch	Minimum Requirement
MDS 9216 (Cisco switch)	IP Address of switch, Username and password
ED-64M (Data 64 port Director)	IP Address of service processor
DS-16B (Brocade 16 port switch)	IP Address of CTP card, Username and password

QUESTION 76:

For which task can the Device Protection Definition dialog box, accessed from the ControlCenter Console Taskbar, be used?

- A. Detach device groups
- B. Create BC volume pair
- C. Gather device statistics
- D. Add or remove mirrors

Answer: D

QUESTION 77:

Which three [3] items are features of EMC VisualSRM?

- A. Intelligent Actions
- B. Snapshots
- C. Autofixes
- D. Thresholds
- E. Topology Reports

Answer: A,B,D

QUESTION 78:

DRAG DROP

Click the Task button.

In the Navisphere GUI, what is the correct sequence of tasks necessary to assign a LUN to a host?

Exhibit:

Tasks in Sequence		Select from these
1	(place here)	Create RAID group
2	(place here)	Create a storage group
3	(place here)	Bind the LUN to the RAID group
4	(place here)	Add the LUN to a storage group
5	(place here)	Assign a host to a storage group

Answer:

Tasks in Sequence	
1	Create RAID group
2	Bind the LUN to the RAID group
3	Create a storage group
4	Add the LUN to a storage group
5	Assign a host to a storage group

QUESTION 79:

Which three [3] databases can be configured for the VisualSRM data repository?

- A. DE (Microsoft Data Engine)
- B. Sybase
- C. SQL Server
- D. Oracle
- E. Informix

Answer: A,C,D

QUESTION 80:

Which example contains the correct general format for the Navisphere CLI command syntax?

- A. navicli SP-name-or-IP -h options command

- B. navicli -h SP-name-or-IP options command
- C. navicli -h SP-name-or-IP command options
- D. navicli SP-name-or-IP -h command options

Answer: C

QUESTION 81:

You want to find out if Access Logix is enabled on a CLARiiON. Which Navisphere GUI window contains this information?

- A. Enterprise Storage
- B. Storage System Properties
- C. Storage System Status
- D. Storage Objects

Answer: B

QUESTION 82:

You want to destroy Storage Group UNIX3. Which two [2] objects must NOT be present in Storage Group UNIX3?

- A. Connected hosts
- B. SAN Copy connections
- C. Snapshots
- D. Bound LUNS

Answer: A,D

QUESTION 83:

DRAG DROP

Click the Task button.

Match each description with its ControlCenter Function.

Exhibit:

Description	Function	Select from these
Allocate storage to hosts that is presented by a storage array	(place here)	Masking
Display a high level summary of indicators for a Variety of areas	(place here)	At A Glance
Display relationship of HBAs, host device, storage ports, storage adaptors and arrays	(place here)	Visual Storage
Display graphical view of Symmetrix backend, frontend, and specific device information	(place here)	Topology
		Path Details
		Physical Display

Answer:

Description	Function
Allocate storage to hosts that is presented by a storage array	Masking
Display a high level summary of indicators for a Variety of areas	Topology
Display relationship of HBAs, host device, storage ports, storage adaptors and arrays	Path Details
Display graphical view of Symmetrix backend, frontend, and specific device information	At A Glance

QUESTION 84:

For which type of CLARiiON LUN must you remove special attributes before removing the LUN?

- A. Clone Private LUN
- B. Expanded LUN
- C. Bound LUN
- D. MetaLUN

Answer: A

QUESTION 85:

DRAG DROP

Click the Task button.

Match each VisualSAN Product Suite component with its description.

Exhibit:

Description	Component	Select from these
Place here	Path Assistant (PA)	Compares topologies for change management
Place here	Network Manager (NM)	Creates LUN masks between hosts and arrays
Place here	Performance Manager (PM)	Reports on cache statistics in the attached arrays
Place here	Configuration Manager (CM)	Provides zoning support and displays topology maps
		Maintains historical trends to predict element saturation
		Monitors connections from hosts to arrays and reports on path failures

Answer:

Description	Component
Creates LUN masks between hosts and arrays	Path Assistant (PA)
Provides zoning support and displays topology maps	Network Manager (NM)
Maintains historical trends to predict element saturation	Performance Manager (PM)
Compares topologies for change management	Configuration Manager (CM)

QUESTION 86:

DRAG DROP

Click the Task button.

There are four documents commonly used to plan the installation or upgrade of a ControlCenter environment. Match each issue with the document that best describes it. (Document labels may be used more than once.)

Exhibit:

Document	Description
Place here	Validate switch firmware releases
Place here	Review new features added in a release
Place here	Use Firewalls in a ControlCenter Environment
Place here	Classify managed objects as small, medium or large
Place here	Understand how to use Windows security features with ControlCenter

Document labels to be moved

EMC Control Center Support Matrix
EMC ControlCenter Release Note
EMC ControlCenter Planning and Installation Guide
EMC ControlCenter Performance and Scalability Guidelines

Answer:

Document	Description
EMC Control Center Support Matrix	Validate switch firmware releases
EMC ControlCenter Planning and Installation Guide	Review new features added in a release
EMC ControlCenter Performance and Scalability Guidelines	Use Firewalls in a ControlCenter Environment
EMC ControlCenter Release Note	Classify managed objects as small, medium or large
EMC ControlCenter Performance and Scalability Guidelines	Understand how to use Windows security features with ControlCenter

QUESTION 87:

Which license is a minimum requirement needed to enable the Storage Provisioning Service wizard?

- A. ARM
- B. STS
- C. WLA
- D. SAN Manager

Answer: A

QUESTION 88:

If devices appear as unknown in VisualSAN, which item describes the probable cause?

- A. The array port has failed
- B. SNMP is not enabled on the device
- C. The host agent is not running
- D. The wrong IP address was entered during configuration

Answer: B

QUESTION 89:

Which three [3] characteristics describe the ControlCenter Server component?

- A. Retrieves data from the Repository for display in the Console
- B. Executes autofixes via SNMP
- C. Provides authentication and security services for ControlCenter
- D. Processes Console data requests
- E. Performs daily backups of the Repository

Answer: A,C,D

QUESTION 90:

You are deploying a new Windows 2000 host into your SAN and have performed the following steps:

- Physically connected the host to the SAN
- Installed the Master and Host agents on the host
- Used SAN Manager to zone the Host's HBA to the Symmetrix port FA5b0
- Used SAN Manager to add the new zone to a new copy of the active zoneset and then activate that zoneset
- Used SDR to map device 02A to port FA5b0
- Used the Masking Wizard to mask device 02A to the host's HBA
- Rebooted the Windows Host

After completing this process, the host still does not see device 02

A. What is most likely the problem?

- A. You did not discover the host HBA prior to zoning the fabric nodes
- B. You did not specify the RAID protection of the device to be allocated to the host
- C. You activated the wrong zoneset
- D. You forgot to refresh the VCMDB after changing the masking configuration

Answer: D

QUESTION 91:

Which two [2] services are primarily responsible for discovery in VisualSAN?

- A. Distributed Transaction Coordinator Service
- B. Discovery Engine Service
- C. Trap Listener Service
- D. Device Manager Service

Answer: B,D

QUESTION 92:

Click the Exhibit button.

Which of the devices displayed in the ControlCenter Masking View is masked to the selected host?

Exhibit:



- A. 01B
- B. 088
- C. 000
- D. 055

Answer: B

QUESTION 93:

You need to maintain optimal system performance of the ControlCenter environment during business hours. Which three [3] items need to be considered when looking at overall ControlCenter Performance?

- A. Overlapping Data Collection Policies (DCPs) with critical application tasks running on the agent hosts.
- B. Data Collection Policies (DCPs) running while StorageScope reports are being processed.
- C. Checking properties of managed objects from Consoles
- D. Fibre channel bandwidth to a switch
- E. Real-time performance viewing of many objects from multiple Consoles

Answer: A,B,E

QUESTION 94:

In order to create new devices using Logical Device Configuration in ControlCenter, which two [2] pre-requisites are necessary?

- A. Solutions Enabler
- B. Storage Agent for Symmetrix
- C. FCC Agent
- D. Host Agent
- E. Symmetrix SDM Agent

Answer: A,B

QUESTION 95:

A change is made to a non-active zone set by another application (not VisualSAN).
When will these changes be visible in VisualSAN?

- A. Triggered immediately by SNMP trap
- B. When the switch is rebooted
- C. 30 minutes
- D. After the next scheduled discovery interval

Answer: D

QUESTION 96:

The CIO wants you to create a Windows 2000 server storage allocation report. Your default server allocation report includes all server types (Windows 2000, AIX, Solaris).
How would you create a Windows 2000 only report?

- A. Highlight all Windows 2000 servers and launch StorageScope reports
- B. From the StorageScope Home Page select the Operating Systems Report, then create a filter on the Operating System Column that equals Windows 2000
- C. Create a filter that contains "Windows 2000" in the Operating System Column in your All Host reports.
- D. Run All Host reports with a filtering on the Operation Systems Column that excludes "AIX" servers

Answer: C

QUESTION 97:

Click the Exhibit button.

On the Navisphere GUI Disk Summary window shown, what does "Enabled" state indicate about a CLARiiON disk?

Exhibit:

Disk	State	Raw Capacity	User Capacity	LUN ID	LUN Type
Bus 0 Enclosure ...	Unbound	35.458 GB	0.000 GB	N/A	N/A
Bus 0 Enclosure ...	Unbound	35.458 GB	0.000 GB	N/A	N/A
Bus 0 Enclosure ...	Unbound	35.458 GB	0.000 GB	N/A	N/A
Bus 0 Enclosure ...	Unbound	35.458 GB	0.000 GB	N/A	N/A
Bus 0 Enclosure ...	Unbound	35.458 GB	0.000 GB	N/A	N/A
Bus 0 Enclosure ...	Enabled	35.458 GB	0.268 GB	0xdf	RAID 1/0
Bus 0 Enclosure ...	Enabled	35.458 GB	0.268 GB	0xdf	RAID 1/0
Bus 0 Enclosure ...	Enabled	35.458 GB	0.268 GB	0xdf	RAID 1/0
Bus 0 Enclosure ...	Enabled	35.458 GB	0.268 GB	0xdf	RAID 1/0
Bus 0 Enclosure ...	Unbound	35.458 GB	0.000 GB	N/A	N/A
Bus 1 Enclosure ...	Unbound	35.458 GB	0.000 GB	N/A	N/A
Bus 1 Enclosure ...	Unbound	35.458 GB	0.000 GB	N/A	N/A
Bus 1 Enclosure ...	Unbound	35.458 GB	0.000 GB	N/A	N/A
Bus 1 Enclosure ...	Unbound	35.458 GB	0.000 GB	N/A	N/A
Bus 1 Enclosure ...	Unbound	35.458 GB	0.000 GB	N/A	N/A
Bus 1 Enclosure ...	Unbound	35.458 GB	0.000 GB	N/A	N/A
Bus 1 Enclosure ...	Empty	0.000 GB	0.000 GB	N/A	N/A
Bus 1 Enclosure ...	Empty	0.000 GB	0.000 GB	N/A	N/A
Bus 1 Enclosure ...	Empty	0.000 GB	0.000 GB	N/A	N/A
Bus 1 Enclosure ...	Empty	0.000 GB	0.000 GB	N/A	N/A

- A. Part of a RAID group and has one or more LUNs bound on it
- B. Part of a RAID group but has no LUNs that have been bound on it
- C. Populated in the storage system
- D. Not part of a RAID group

Answer: A

QUESTION 98:

You have an alert set that monitors the M:drive on a Windows 2000 host. If the M:drive capacity falls below 10% free, the alert is set to execute an autofix that will defragment the filesystem. If the ControlCenter Infrastructure system is down for maintenance when the filesystem falls below 10% free, when will the autofix execute?

- A. Never
- B. When the Windows 2000 host is rebooted
- C. Immediately
- D. When the Infrastructure system comes back online

Answer: C

QUESTION 99:

DRAG DROP

Click the Task button.

Match each VisualSRM Component to its description.

Exhibit:

E20-582

Component	Description	Select from these
Agent	(place here)	Automates backup of repository
Alerter	(place here)	Persistent storage for file scan data
Server	(place here)	Manages agent, policies, and alerts
Console	(place here)	Displays threshold base pop-up alerts
Database repository	(place here)	Provides policy and scheduling engine
		Handles communication with storage arrays
		Monitors, collects, and transmits file scan data

Answer:

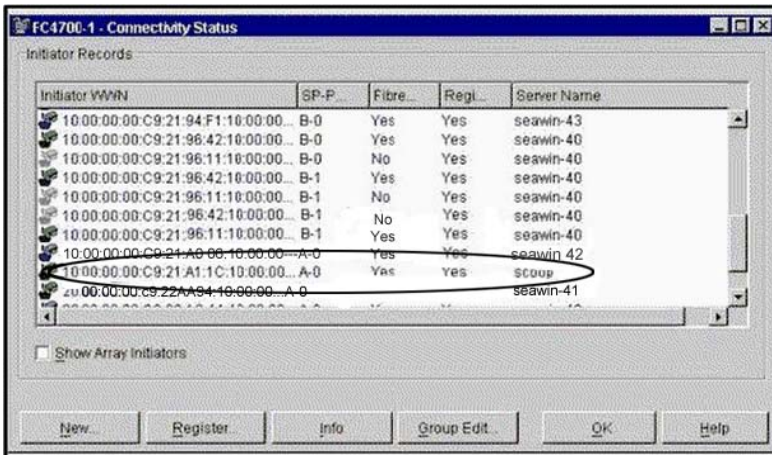
Component	Description
Agent	Provides policy and scheduling engine
Alerter	Persistent storage for file scan data
Server	Manages agent, policies, and alerts
Console	Automates backup of repository
Database repository	Monitors, collects, and transmits file scan data

QUESTION 100:

Click the Exhibit button.

On the Connectivity Status window shown, what would happen during a shutdown of the highlighted server?

Exhibit:



- A. The Checkmark icon changes color from green to grey AND the Fibre column is Yes
- B. The Checkmark icon changes color from green to grey AND the Fibre column changes from Yes to No
- C. The Checkmark icon changes color from green to blue AND the Fibre column changes from Yes to No
- D. The Checkmark icon color is green AND the Fibre column changes from Yes to No

Answer: B

QUESTION 101:

Which statement contains the correct Navisphere CLI syntax to display storage group information?

- A. navicli -h SPA -a storagegroup name scoop_1
- B. navicli -h SPA -a storagegroup -list -gname scoop_1
- C. navicli -h SPA storagegroup -list -gname scoop_1
- D. navicli -h SPA -a storagegroup -list scoop_1

Answer: C

QUESTION 102:

You want to change the name of a Storage Group. Which tab of the Navisphere GUI Storage Group Properties window would you use?

- A. General
- B. LUNs
- C. Hosts
- D. Disks

Answer: A

QUESTION 103:

DRAG DROP

Click the Task button.

When a host requests a write I/O to a CLARiiON array, what is the correct sequence of activities?

Exhibit:

Activities in order	
1	(place step one here)
2	(place step two here)
3	(place step three here)
4	(place step four here)
5	(place step five here)

Select from these
The host requests a write I/O to the LUN
The peer SP acknowledges receipt of data
Data is placed in the cache of the owning SP
The owning SP acknowledges the write to the host
Data is mirrored across the CLARiiON Messaging (CMI) to the peer SP

Answer:

Activities in order	
1	The host requests a write I/O to the LUN
2	Data is placed in the cache of the owning SP
3	Data is mirrored across the CLARiiON Messaging (CMI) to the peer SP
4	The peer SP acknowledges receipt of data
5	The owning SP acknowledges the write to the host

QUESTION 104:

In VisualSAN, which two [2] items are required to complete the Configuration Wizard?

- A. Mail server name
- B. IP addresses of arrays
- C. Vendor name and model of switches
- D. IP addresses of switches

Answer: A,D

QUESTION 105:

Click the Exhibit button.

On the sample Enterprise Storage window shown, what does the capital "U" icon next to Host "UNIX2" indicate?

Exhibit:



- A. Unavailable
- B. Unreachable
- C. Unmanaged
- D. Undefined

Answer: C

QUESTION 106:

Which statement contains the correct Navisphere CLI syntax to display CLARiiON LUN information?

- A. navicli -h SPA -a getlun -list 10
- B. navicli -h SPA -a getlun 10
- C. navicli -h SPA getlun 10
- D. navicli -h SPA -a -list getlun 10

Answer: B

QUESTION 107:

What is the relationship between a storage provisioning policy and a storage pool?

- A. A storage policy is an independent entity
- B. A storage policy does not have to refer to a pool
- C. A storage policy always specifies a pool
- D. A storage policy can refer to multiple pools

Answer: C

QUESTION 108:

Which three [3] pieces of information are required to create a zone?

- A. Fabric name
- B. ISL buffer credits
- C. HBA and array ports
- D. Zone name and type
- E. IP address of switch

Answer: A,C,D

QUESTION 109:

Which two [2] items in Security Administration provide users access to functions equivalent to the ECCadmin account?

- A. ECCAdministrators Group
- B. Symmetrix Configuration Management Rule
- C. ECCAdministrators Rule
- D. Any User Rule
- E. SAN Manager Rule

Answer: A,C

QUESTION 110:

Which EMC ControlCenter upgrade path is supported?

- A. 5.1.1 multi-homed to 5.1.2 multi-homed
- B. Upgrade from ControlCenter 4.x to 5.0
- C. 5.0.x to 5.1.x dedicated server to clustered server
- D. 5.1.1 distributed server configuration to 5.1.2 single server configuration

Answer: A

QUESTION 111:

Which ControlCenter task set is used to perform Symmetrix configuration management?

- A. Monitoring
- B. Storage Allocation
- C. Performance Management
- D. ECC Administration

Answer: B

QUESTION 112:

You are planning a data migration project for this coming weekend. You want to capture performance metrics from your Symmetrix for the time duration that your migration work will take place because you encountered some performance issues from a previous migration. Which Data Collection Policy is most suitable for this task?

- A. Enable WLA Scheduled Policy for Symmetrix
- B. Enable WLA Daily Policy for Connectrix
- C. Enable WLA Revolving Policy for Symmetrix
- D. Enable WLA Daily Policy for Symmetrix
- E. Enable WLA Analyst Policy for Symmetrix

Answer: E

QUESTION 113:

Which three [3] device type attributes can you change within ControlCenter?

- A. BCV
- B. DRV
- C. SRDF
- D. Standard
- E. Parity RAID

Answer: A,B,D