

Component Replacement

- electrical -



Xperia XZ3

H8416, H9436 (Dual SIM), H9493 (Dual SIM)

CONTENTS

1	Replaceable Components	3
2	Tools	5
3	Component Placing.....	8
4	Additional Repair Info	10
5	Revision History	20

Baking prior to repair is required, if the board have been exposed to air more than 12 hours from PWB package opening. Too long exposure time increase the level of moisture in PWB and the PWB could delaminate during repair process and result in direct or latent failures and reduce reliability.

The boards shall be baked in 125°C ±5°C for 4 hours.

All Electrical components are RLC (Reversed Logistic Classification) level C, refer to the 3.4 Valid Spare Parts chapter in the Warranty Claim Instruction RE4249 about disposition of the parts.

Test after component replacement to refer to the 1317-8700 Test Instruction.

Do not remove shield can lids (RF performance will be damaged).

If there are components located on right next to the component that intend to replace, protect those components with Kapton tape to avoid damages.

1 Replaceable Components

EXPLANATION OF ABBREVIATIONS USED IN THE COLUMN 'COMMENTS' BELOW

REPAIR METHOD

HA = Hot Air (removal & mounting)

ST = Soldering Tool (removal & mounting)

HA/ST = Hot Air for removal - Soldering Tool for mounting

BGA = BGA Station

BH = Bottom Heater

ADDITIONAL INFORMATION

⇒1 (2, 3, 4, etc.) = Proceed to 'Additional Repair Info' for further instructions in the indicated section(s).

Primary Side

Position	Component	Part no.	Comments
CN3503	Conn Leaf Spring Plug 1p WH : 0.8+-0.2	1294-8905	HA+BH → 1
CN3504	Conn Leaf Spring Plug 1p WH : 0.8+-0.2	1294-8905	HA+BH → 1
CN4000	Card Conn SIM 3in2 Connector	1299-2861	HA+BH or BGA → 2
CN4620	Conn Leaf Spring 1p WH: 1.8-2.2	1305-1327	HA+BH → 3
CN4622	Conn Leaf Spring 1p WH : 1.0+-0.2	1304-1858	HA+BH → 4
CN4623	Conn Leaf Spring Plug 1p WH : 1.6+-0.2	1297-5833	HA+BH → 5
CN4625	Conn Leaf Spring Plug 1p WH : 0.8+-0.2	1294-8905	HA+BH → 6
CN4626	Conn Leaf Spring Plug 1p WH : 0.8+-0.2	1294-8905	HA+BH → 6
CN4627	Conn Leaf Spring Plug 1p WH : 0.8+-0.2	1294-8905	HA+BH → 6
CN4629	Conn Leaf Spring Plug 1p WH : 0.8+-0.2	1294-8905	HA+BH → 6
CN4631	Conn Leaf Spring Plug 1p WH : 0.8+-0.2	1294-8905	HA+BH → 7
CN4632	Conn Leaf Spring Plug 1p WH : 0.8+-0.2	1294-8905	HA+BH → 8
CN4634	Conn Leaf Spring Plug 1p WH : 0.8+-0.2	1294-8905	HA+BH → 9
CN4635	Conn Leaf Spring Plug 1p WH : 0.8+-0.2	1294-8905	HA+BH → 9
CN4660	Conn Coax Receptacle 1p	1299-1838	HA+BH → 10
CN4662	Conn Coax Receptacle 1p Mount Clip	1287-4587	HA+BH → 11
CN4663	Conn Coax Receptacle 1p Mount Clip	1287-4587	HA+BH → 11
CN4665	Conn Coax Receptacle 1p Mount Clip	1287-4587	HA+BH → 12
CN4666	Conn Coax Receptacle 1p	1299-1838	HA+BH → 10
CN4668	Conn Other 1p Mount Clip for RF cable	1299-9890	HA+BH → 13
CN4669	Conn Other 1p Mount Clip for RF cable	1299-9890	HA+BH → 14
CN4670	Conn Other 1p Mount Clip for RF cable	1299-9890	HA+BH → 13
CN4671	Conn Coax Receptacle 1p Mount Clip	1287-4587	HA+BH → 12
CN4700	Conn Leaf Spring Plug 1p WH : 0.8+-0.2	1294-8905	HA+BH → 15
CN4703	Conn Leaf Spring Plug 1p WH : 0.8+-0.2	1294-8905	HA+BH → 15
CN4715	Conn Leaf Spring Plug 1p WH : 0.8+-0.2	1294-8905	HA+BH → 16
CN4720	Conn Leaf Spring Plug 1p WH : 0.8+-0.2	1294-8905	HA+BH → 16
CN4731	Conn Leaf Spring Plug 1p WH : 0.8+-0.2	1294-8905	HA+BH → 17
CN4735	Conn Leaf Spring Plug 1p WH : 0.8+-0.2	1294-8905	HA+BH → 15
CN4740	Conn Leaf Spring Plug 1p WH : 0.8+-0.2	1294-8905	HA+BH → 5
CN4750	Conn Leaf Spring Plug 1p WH : 0.8+-0.2	1294-8905	HA+BH → 5
CN4755	Conn Leaf Spring Plug 1p WH : 0.8+-0.2	1294-8905	HA+BH → 6
CN4760	Conn Leaf Spring Plug 1p WH : 0.8+-0.2	1294-8905	HA+BH → 18
CN4765	Conn Leaf Spring Plug 1p WH : 0.8+-0.2	1294-8905	HA+BH → 18
CN4780	Conn Leaf Spring Plug 1p WH : 0.8+-0.2	1294-8905	HA+BH → 16
D7601	LED FULL-COLOR 1.6x1.6x0.35mm	1268-3829	HA+BH → 19

Replaceable Components

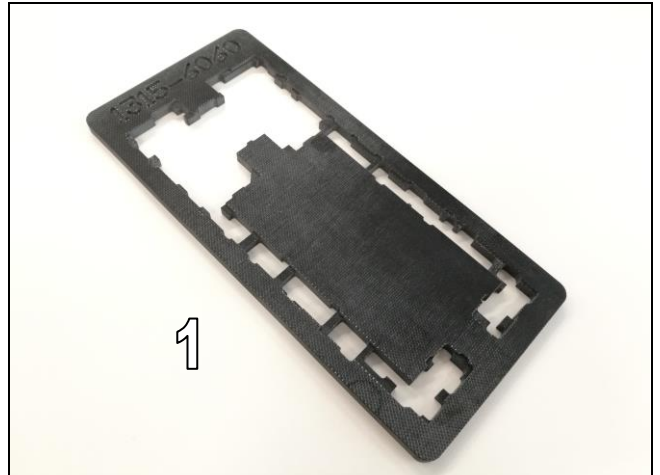
Secondary Side

Position	Component	Part no.	Comments
CN1300	Conn BtB Plug 4p HIROSE/BM22	1281-9973	HA+BH → 1
CN1350	Conn BtB Receptacle 10p FUJIKURA BB35	1306-7941	HA+BH → 2
CN2201	Conn BtB Receptacle 40p JAE WP27D-S040VA3-A	1312-3761	HA+BH → 3
CN2202	Conn BtB Receptacle 10p Dai-ichi Seiko NOVASTACK 35-P	1313-0241	HA+BH → 4
CN3505	Conn Leaf Spring Plug 1p WH : 0.8+-0.2	1294-8905	HA+BH → 5
CN3506	Conn Leaf Spring Plug 1p WH : 0.8+-0.2	1294-8905	HA+BH → 5
CN4624	Conn Leaf Spring Plug 1p WH : 0.8+-0.2	1294-8905	HA+BH → 6
CN4633	Conn Leaf Spring Plug 1p WH : 0.8+-0.2	1294-8905	HA+BH → 7
CN4661	Conn Coax Receptacle 1p	1299-1838	HA+BH → 8
CN4664	Conn Coax Receptacle 1p Mount Clip	1287-4587	HA+BH → 9
CN4667	Conn Coax Receptacle 1p	1299-1838	HA+BH → 10
CN4675	Conn Leaf Spring Plug 1p WH : 0.8+-0.2	1294-8905	HA+BH → 11
CN4741	Conn Leaf Spring Plug 1p WH : 0.8+-0.2	1294-8905	HA+BH → 5
CN4756	Conn Leaf Spring Plug 1p WH : 0.8+-0.2	1294-8905	HA+BH → 6
CN5103	Conn WtB Receptacle 2p	1206-4855	HA+BH → 12
CN5300	Conn BtB Receptacle 16p DDK, BB35S	1298-4253	HA+BH → 13
CN7000	Conn BtB Receptacle 40p Dai-ichi Seiko(I-PEX) NOVASTACK 35-P	1311-3235	HA+BH → 14
CN7300	Conn BtB Receptacle 34p DDK BB35	1293-6188	HA+BH → 15
CN7301	Conn BtB Receptacle 34p PF22 NOVASTACK 35-P RECEPTACLE	1309-8810	HA+BH → 16
CN8850	Conn Leaf Spring Plug 1p WH : 1.6+-0.2	1297-5833	HA+BH → 17
CN8851	Conn Leaf Spring Plug 1p WH : 1.6+-0.2	1297-5833	HA+BH → 17
CN9503	Conn BtB Receptacle 16p DDK, BB35S	1298-4253	HA+BH → 18
MC3001	Mic 3.5 Silicon	1313-9113	HA+BH → 19
MC3002	Mic 3.5 Silicon G83	1306-8997	HA+BH → 20

2 Tools

SPECIAL TOOL

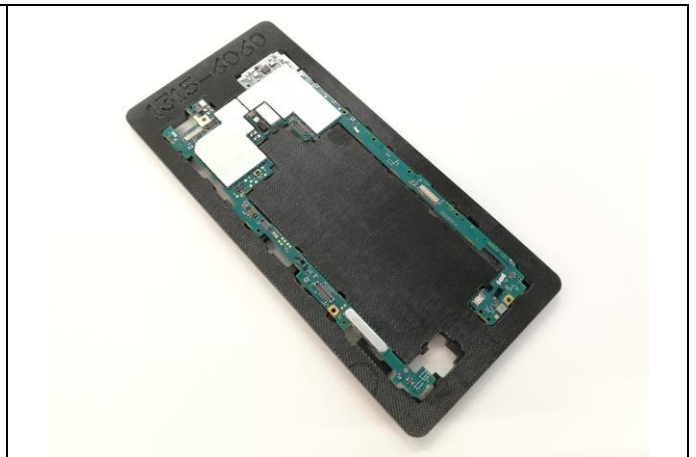
1. PBA Soldering Fixture (1315-6060)



The tool can be used for both primary side and secondary side.

Primary Side

Secondary Side



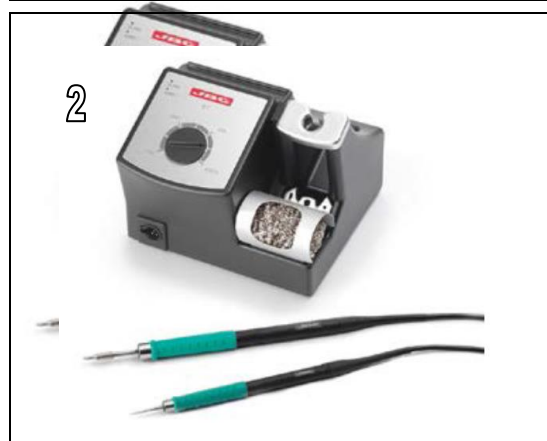
Tools

STANDARD TOOLS

1. Small Convection (Hot Air) Device



2. Soldering Iron



3. Soldering wick



4. Solder-wire



Tools

5. Solder-paste



6. Low Static Heat Protection Tape



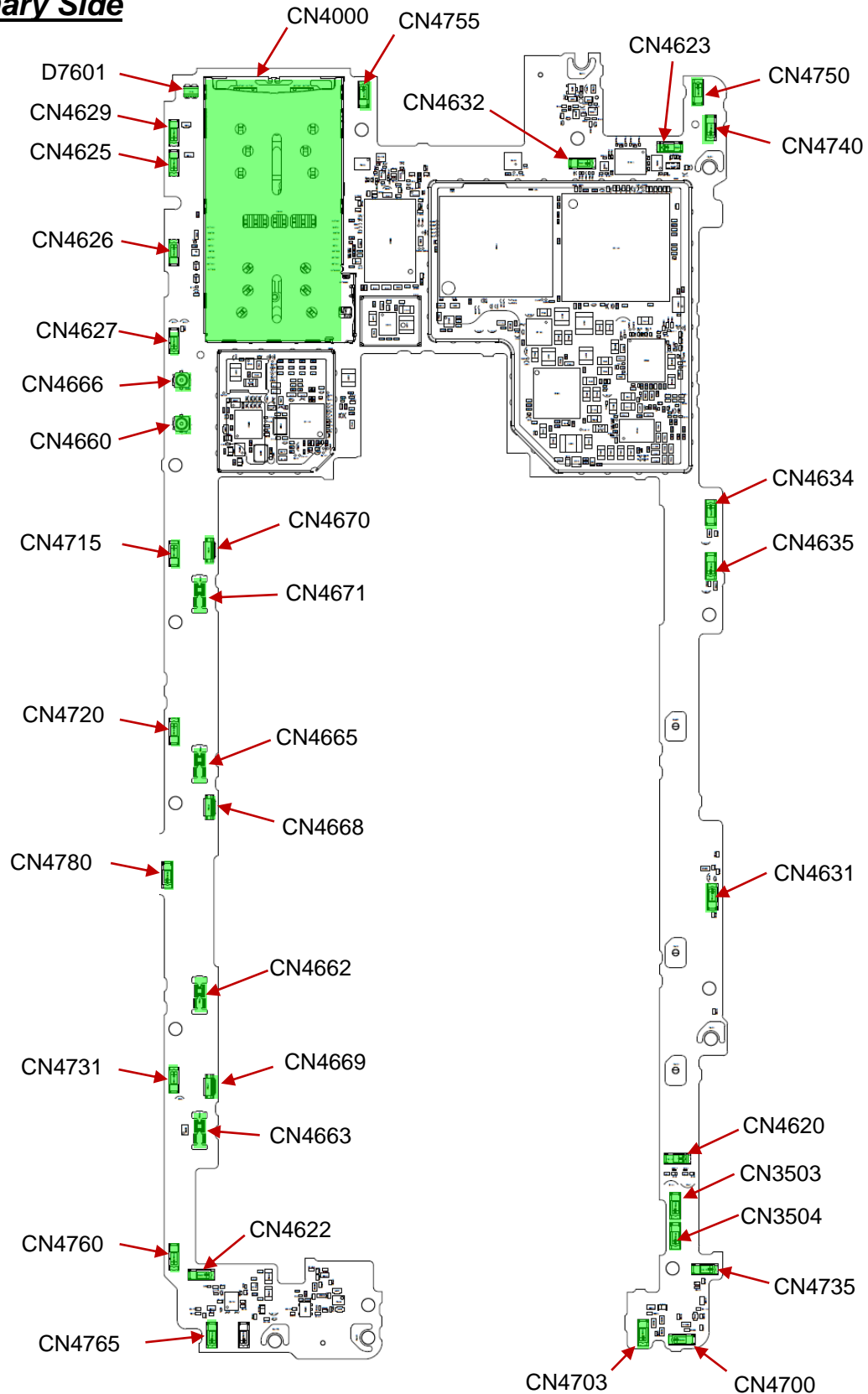
7. Flux



Refer to the 1003-9107 Tools Catalogue for detail of standard tools.

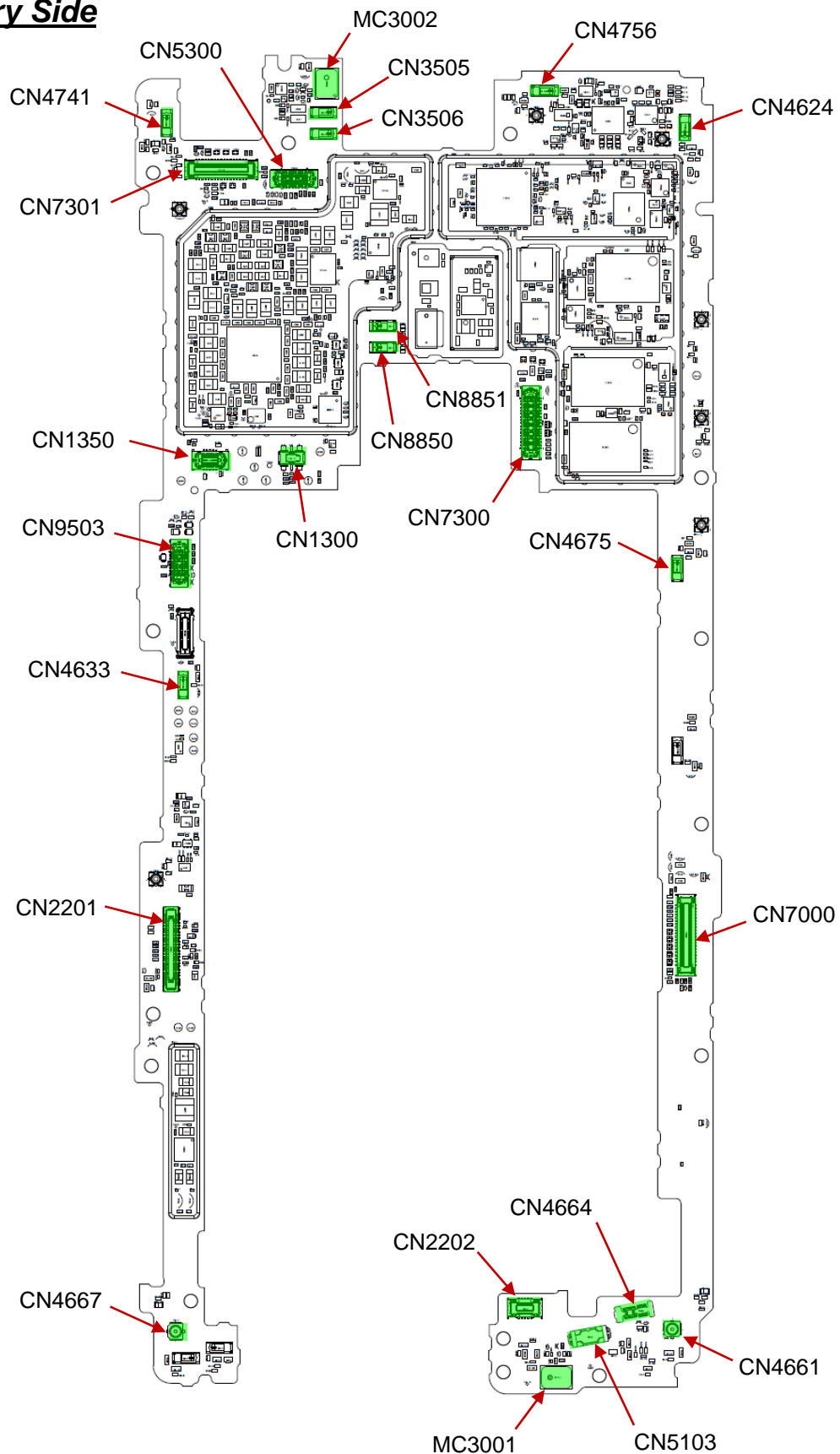
3 Component Placing

Primary Side



Component Placing

Secondary Side

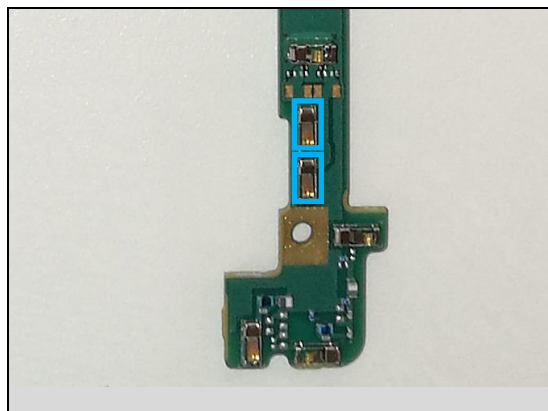


4 Additional Repair Info

Primary Side 1

CN3503, CN3504

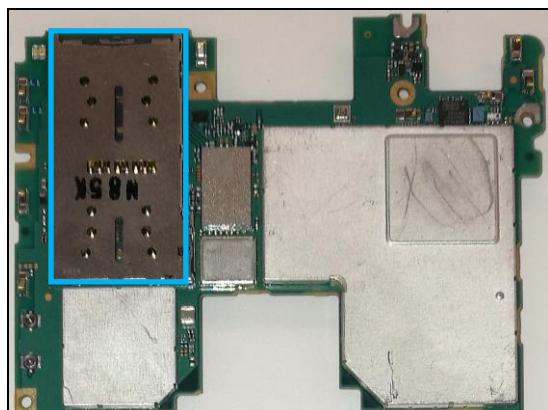
Replace if mechanical damaged. (Bottom Speaker malfunction)



Primary Side 2

CN4000

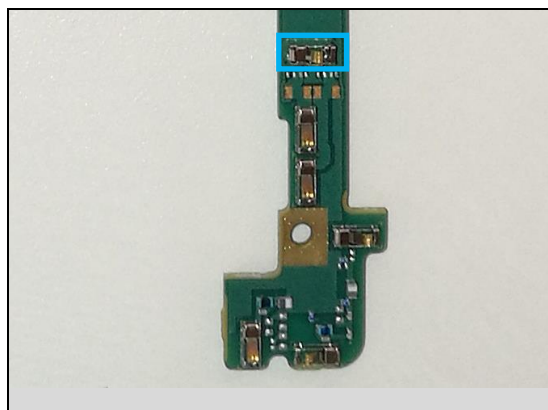
Replace if mechanically damaged. (No SIM/SD card detected, Repeating restart).



Primary Side 3

CN4620

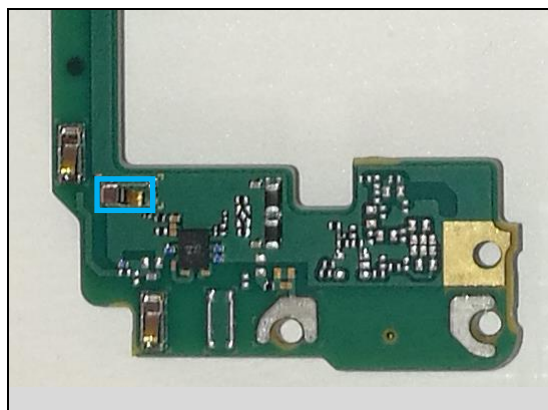
Replace if mechanically damaged.



Primary Side 4

CN4622

Replace if mechanical damaged.

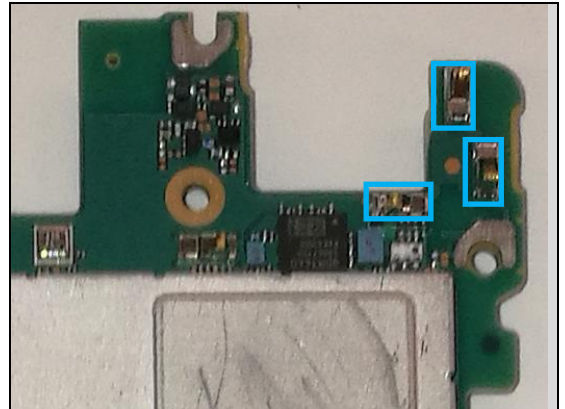


Additional Repair Info

Primary Side 5

CN4623, CN4740, CN4750

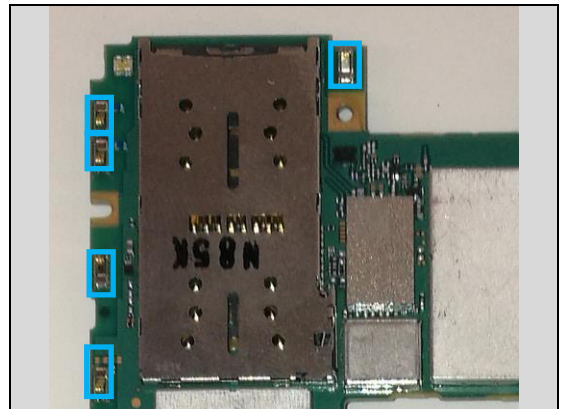
Replace if mechanical damaged.



Primary Side 6

CN4625, CN4626, CN4627, CN4629, CN4755

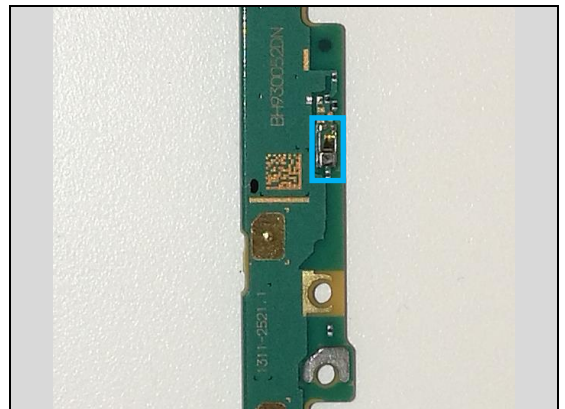
Replace if mechanical damaged.



Primary Side 7

CN4631

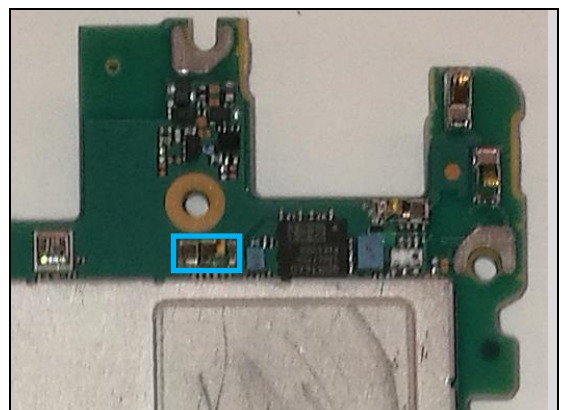
Replace if mechanical damaged.



Primary Side 8

CN4632

Replace if mechanical damaged. (Touch malfunction)

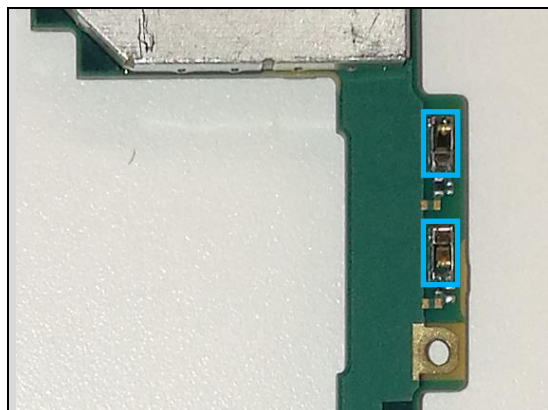


Additional Repair Info

Primary Side 9

CN4634, CN4635

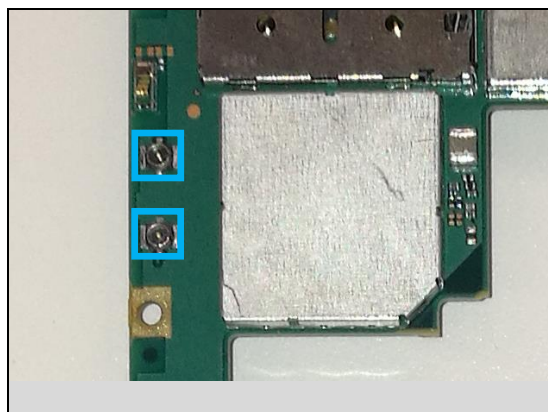
Replace if mechanical damaged.



Primary Side 10

CN4660, CN4666

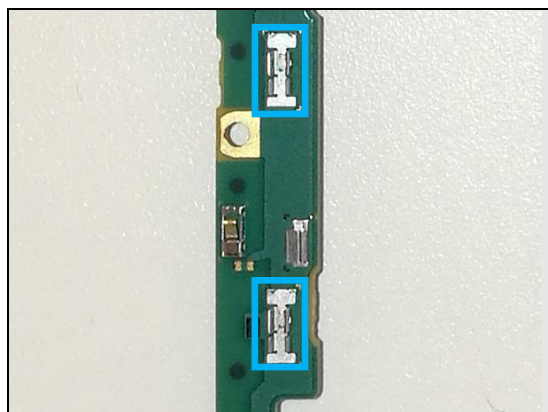
Replace if mechanical damaged.



Primary Side 11

CN4662, CN4663

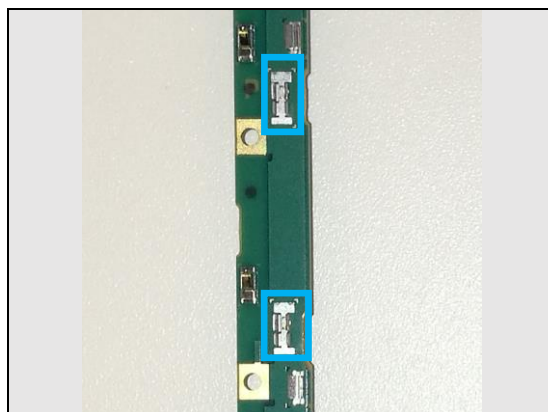
Replace if mechanical damaged.



Primary Side 12

CN4665, CN4671

Replace if mechanical damaged.

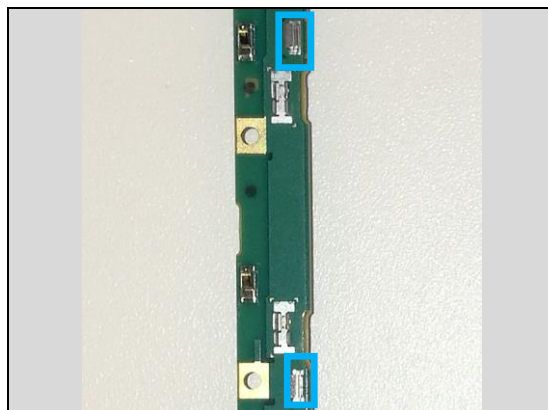


Additional Repair Info

Primary Side 13

CN4668, CN4670

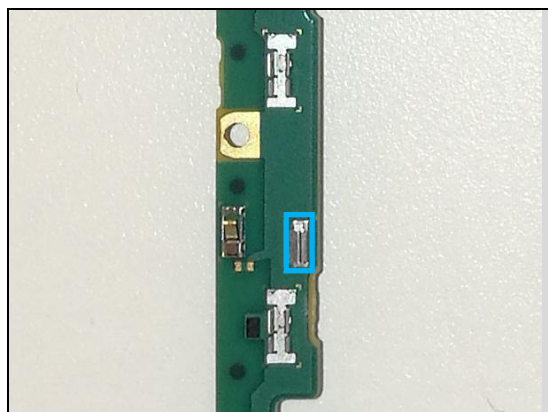
Replace if mechanical damaged.



Primary Side 14

CN4669

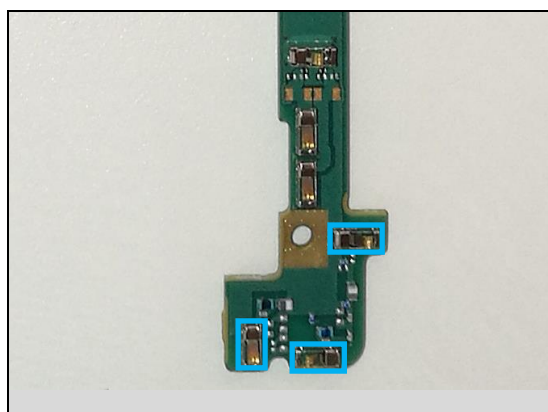
Replace if mechanical damaged.



Primary Side 15

CN4700, CN4703, CN4735

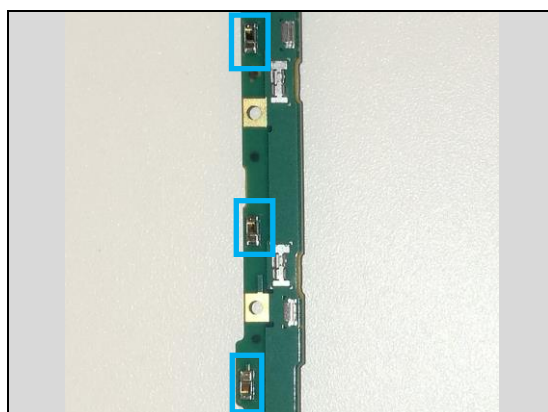
Replace if mechanical damaged.



Primary Side 16

CN4715, CN4720, CN4780

Replace if mechanical damaged.

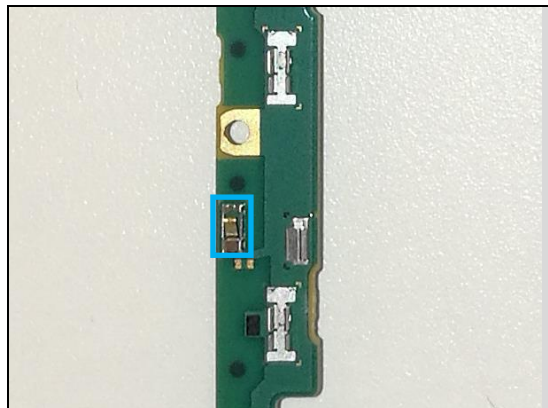


Additional Repair Info

Primary Side 17

CN4731

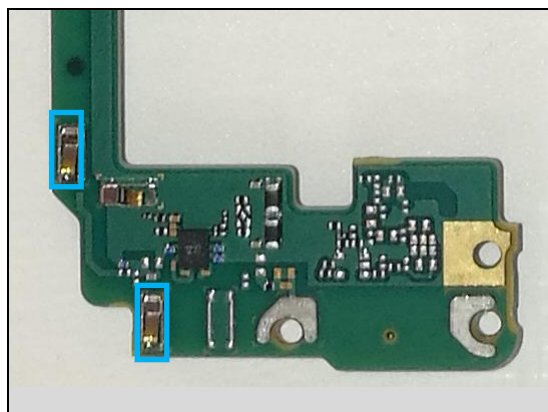
Replace if mechanical damaged.



Primary Side 18

CN4760, CN4765

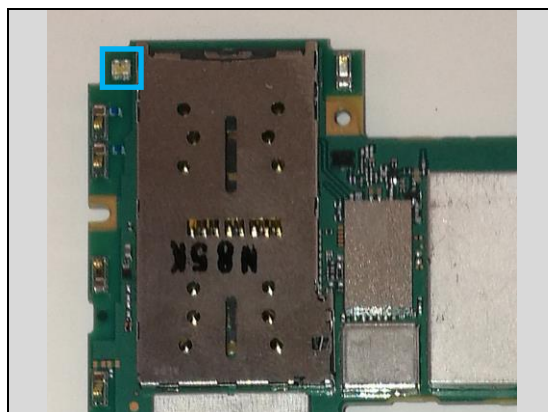
Replace if mechanical damaged.



Primary Side 19

D7601

Replace if mechanical damaged. (No notification lamp)

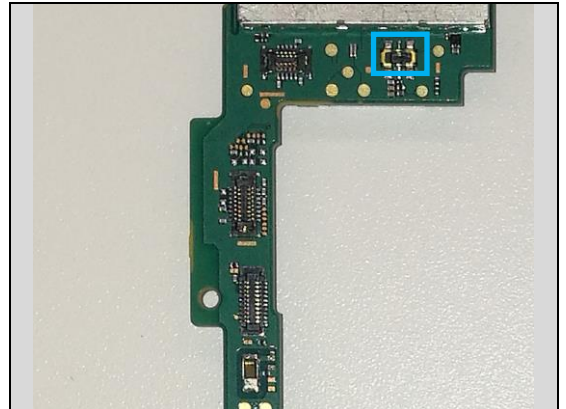


Additional Repair Info

Secondary Side 1

CN1300

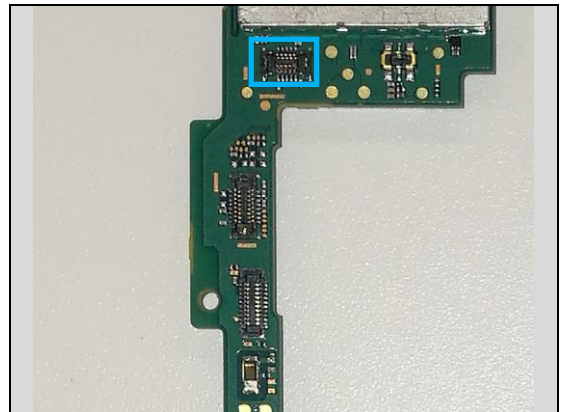
Replace if mechanical damaged. (No power, No charge battery)



Secondary Side 2

CN1350

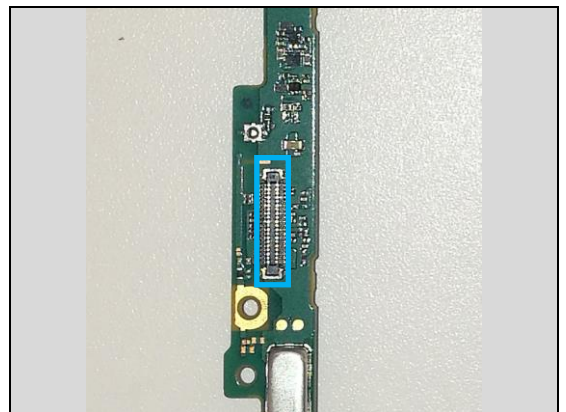
Replace if mechanical damaged. (No wireless charge)



Secondary Side 3

CN2201

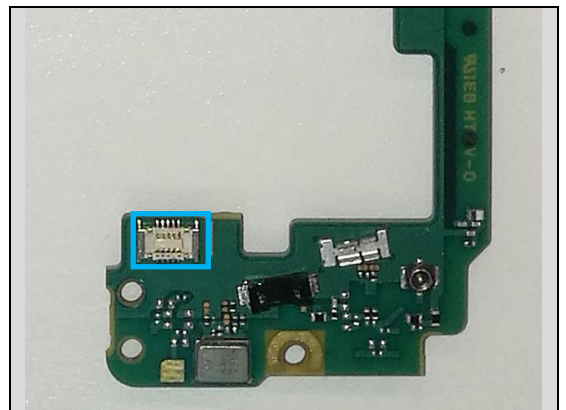
Replace if mechanical damaged. (Can't connect USB)



Secondary Side 4

CN2202

Replace if mechanical damaged.

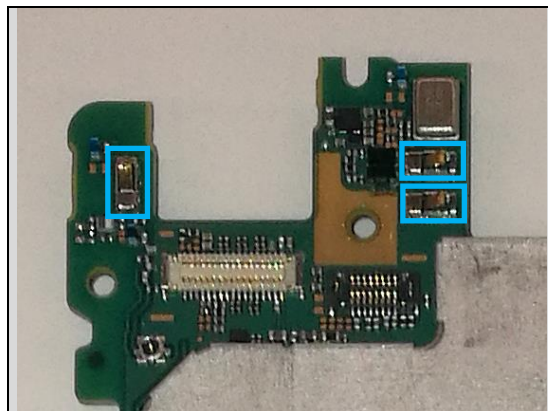


Additional Repair Info

Secondary Side 5

CN3505, CN3506, CN4741

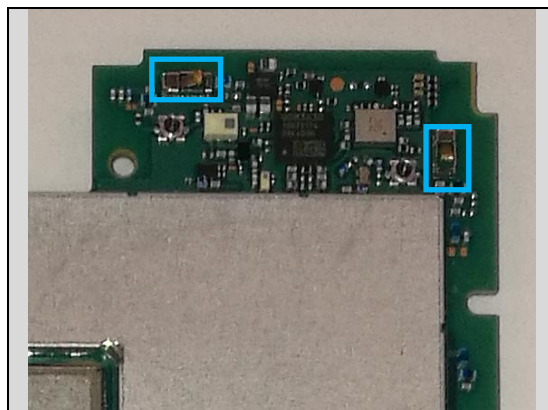
Replace if mechanical damaged.



Secondary Side 6

CN4624, CN4756

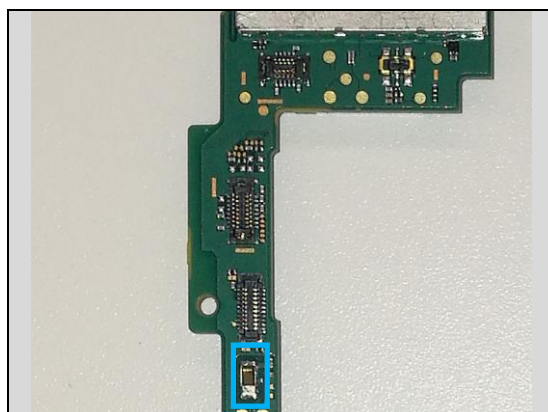
Replace if mechanical damaged.



Secondary Side 7

CN4633

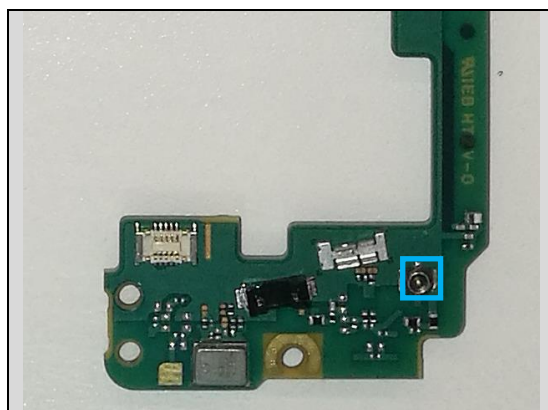
Replace if mechanical damaged.



Secondary Side 8

CN4661

Replace if mechanical damaged.

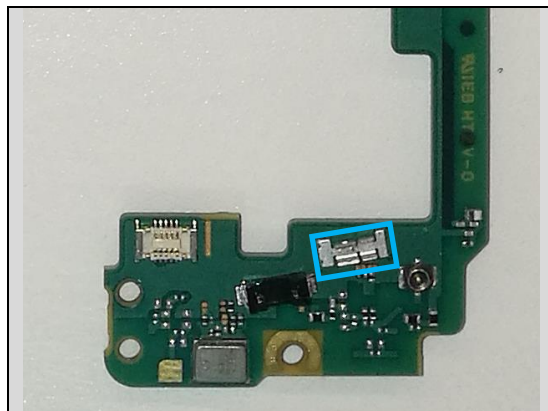


Additional Repair Info

Secondary Side 9

CN4664

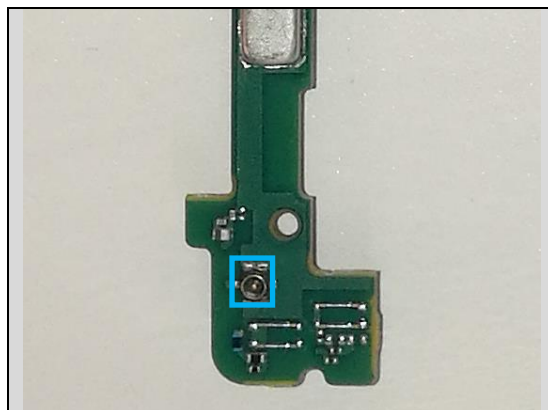
Replace if mechanical damaged.



Secondary Side 10

CN4667

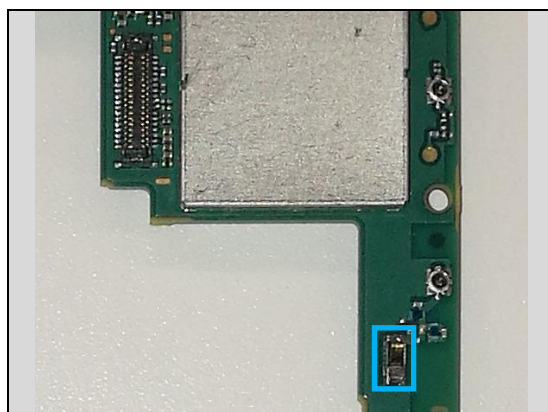
Replace if mechanical damaged.



Secondary Side 11

CN4675

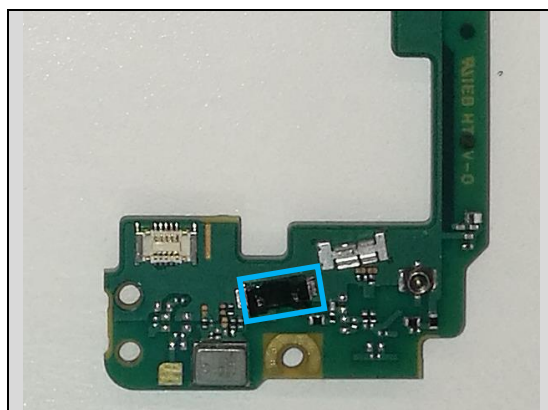
Replace if mechanical damaged.



Secondary Side 12

CN5103

Replace if mechanical damaged. (Vibrator malfunction)

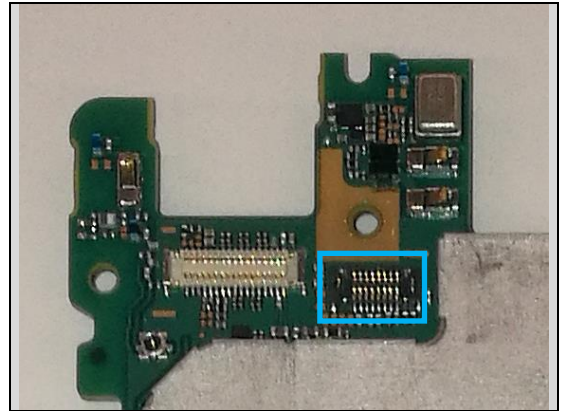


Additional Repair Info

Secondary Side 13

CN5300

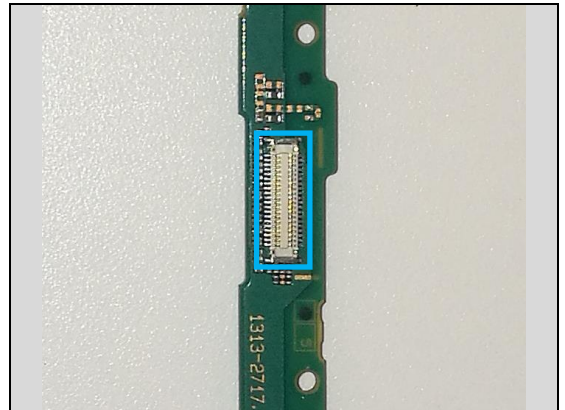
Replace if mechanical damaged. (Touch malfunction)



Secondary Side 14

CN7000

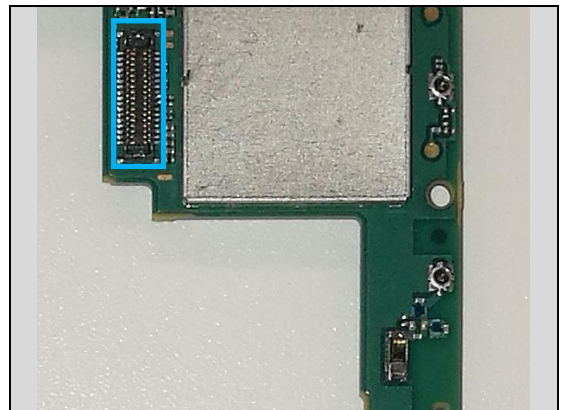
Replace if mechanical damaged. (Display malfunction)



Secondary Side 15

CN7300

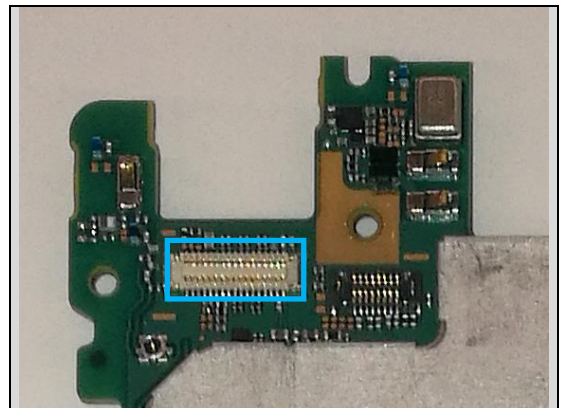
Replace if mechanical damaged. (Main Camera malfunction)



Secondary Side 16

CN7301

Replace if mechanical damaged. (Front Camera malfunction)

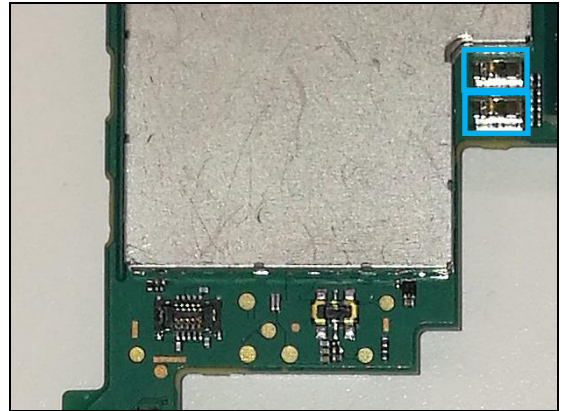


Additional Repair Info

Secondary Side 17

CN8850, CN8851

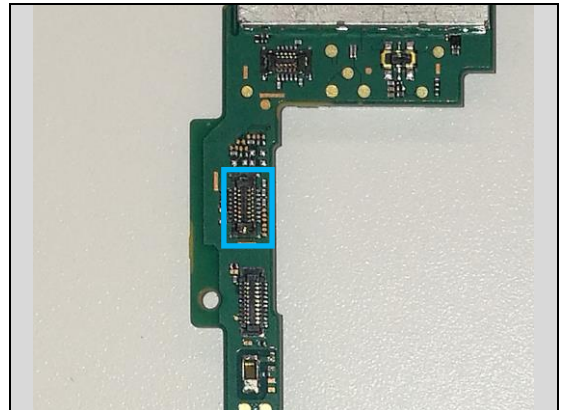
Replace if mechanical damaged. (NFC malfunction)



Secondary Side 18

CN9503

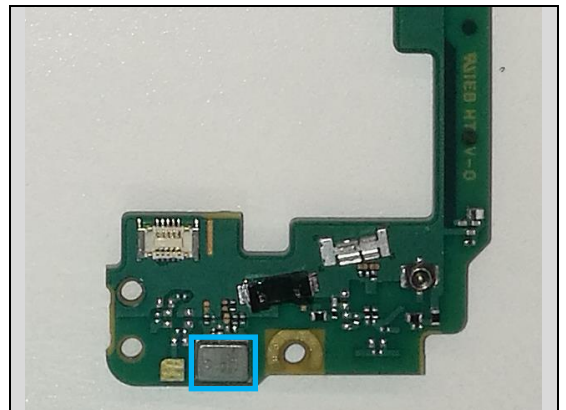
Replace if mechanical damaged. (Vol key, Power key, Camera key and Fingerprint sensor malfunction)



Secondary Side 19

MC3001

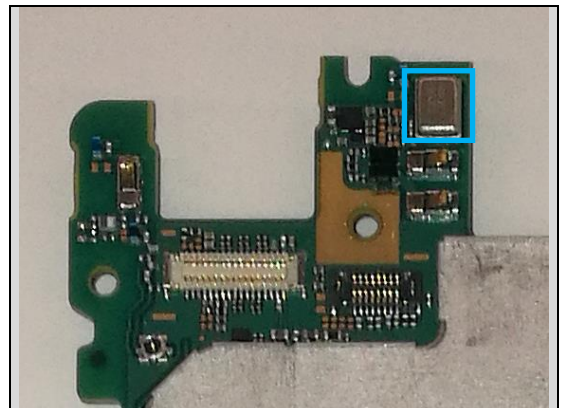
Replace if mechanical damaged. (Microphone malfunction)



Secondary Side 20

MC3002

Replace if mechanical damaged. (Microphone malfunction)



5 Revision History

Rev.	Date	Changes/Comments
1	2018-Sep-14	Initial release